

Template – Technical Proposal for TM Landed Project (Rev 0)

Revision Record

Revision No.	Description Of Change	Author	Effective Date
0	N/A	1. Azhan Haris	December 2024

Technical Proposal for TM Project



Project Description:	SRR FTTH SIM2_CXXX TAMAN MATANG DAMAI
Project Number:	TMNA/241910
TM Node	TP
Region	Northern
NE ID	SIM2 C030
Total FTTH Ports	72
Total Property	143
PF (%)	51%
RFSI Date	30 Apr 2025
GPS Coordinate	4.809420, 100.698791

Prepared by:	AZHAN HARIS
Company Name:	SINOR
Date:	26 Dec 2024
TP Revision:	0

Contents

- 1.0 **FDC information**
 - 1.1 FDC Boundary
 - 1.2 FDC Details and Illustration

- 2.0 **FDP information**
 - 2.1 FDP and FOOSC Location
 - 2.2 FDP Boundary
 - 2.3 Cable Plan
 - 2.4 Spur Information
 - 2.5 FDP details
 - 2.6 Tie FDP details

- 3.0 **New Pole information**
 - 3.1 Pole plan
 - 3.2 Pole details
 - 3.3 Illustration

- 4.0 **Material Specification**
 - 4.1 Fiber Accessories - FDC/Mini FDC/FDP/ODF
 - 4.2 Civil Accessories – Manhole/Pole

- 5.0 **Costing & BOQ**
 - 5.1 Project BOQ
 - 5.2 Costing

MATRIX REQUIREMENT FOR PROJECT

NO	Item	Detail Item	Remark	TP Check list					
				FTTH >1 DP	FTTH 1 FDP	Add DP / Tie DP	NID/5G	Civil	Main FOC
1	Cabinet location	Boundary	Polygon on Map showing area covered by FDC	C	C	NR	NR	NR	NR
		Detail Illustration	Illustration showing FDP location on picture, table with detail address, latlong	C	C	C	C	NR	NR
2	Cable Plan	On Map	Cable Plan, ID, Distance, Route, Distance, Joint Location illustration on map	C	C	C	C	NR	C
		SLD	Cable Plan	C	NR	NR	NR	NR	NR
3	FDP	Detail FDP/Tie DP	Table with FDP & Tie DP Detail	C	C	C	NR	NR	NR
		FDP, Tie DP Boundary	Polygon on Map for landed or Building image for Highrise showing area covered by each FDP	C	C	C	NR	NR	NR
4	Pole	Plan	Location and quantity on Map	C	C	C	C	C	C
		Illustration	Illustration showing Pole location on picture, table with detail pole type, latlong	C	C	C	C	C	C
5	Civil	Plan	Location and quantity on Map	C	C	C	C	C	C
		Illustration	Illustration showing civil location on picture, table with detail address, latlong	C	C	C	C	C	C
		Civil Manhole Detail	Table with Manhole Detail	C	C	C	C	C	C
6	BOQ & BOM	Detail BOQ	Detail PU item related to project. Show – PU number, quantity and costDetail	C	C	C	C	C	C
		Detail BOM*	Material related to project	C	C	C	C	C	C
7	Costing		Overall cost	C	C	C	C	C	C

*CNC Lite only

1.1 Location Plan & Boundary (D-Side)



Legend:



FDC



FDP



EXT. JOINT



NEW JOINT



MANHOLE/PIT



NEW CONCRETE POLE



EXT. CONCRETE POLE



EXT. IRON POLE



FOC 12C IB

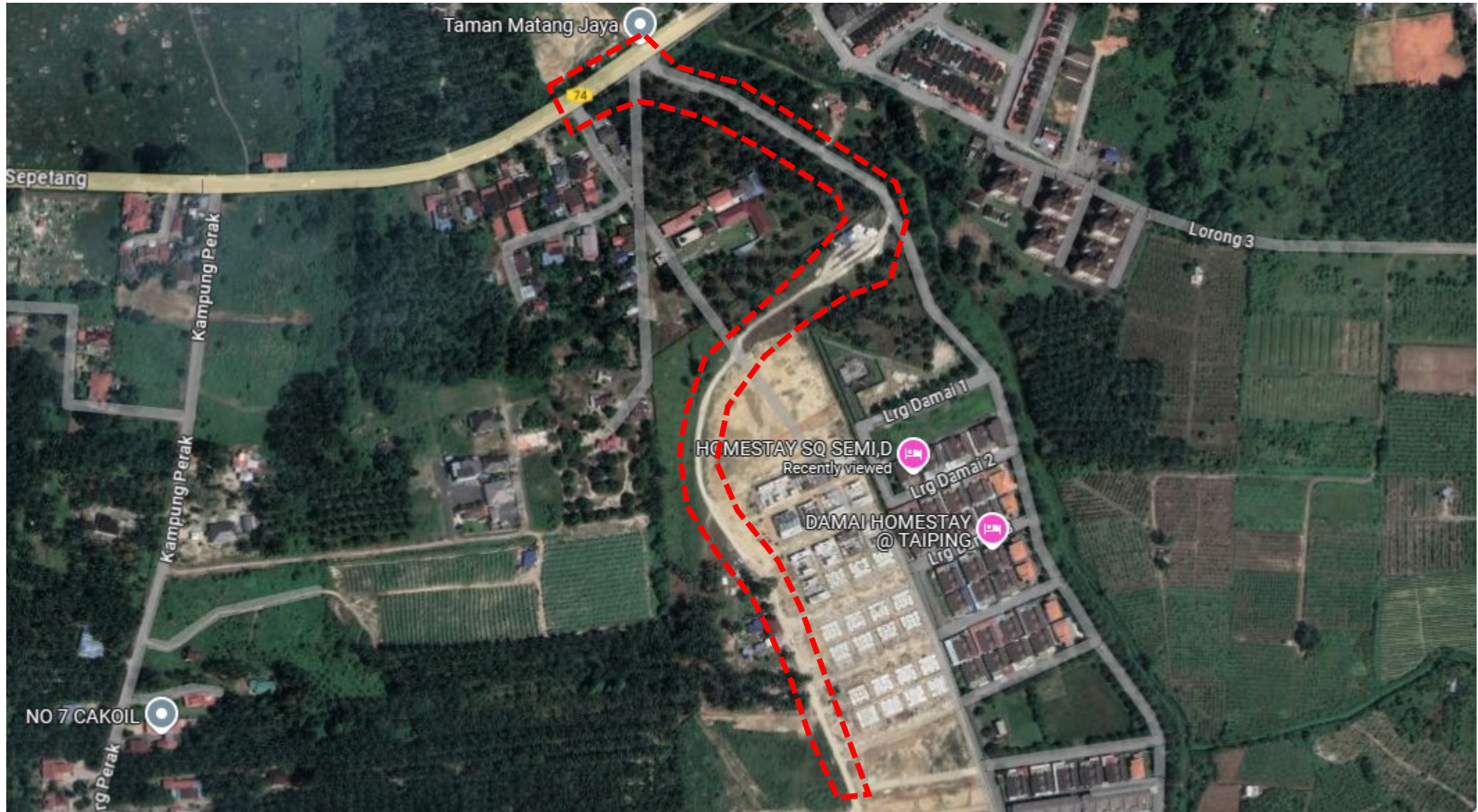












FOC 24C IB



FOC 48C IB

1.1 Location Plan & Boundary (E-Side)



Legend:											
	FDC		EXT. JOINT		MANHOLE/PIT		EXT. CONCRETE POLE		FOC 12C IB		FOC 48C IB
	FDP		NEW JOINT		NEW CONCRETE POLE		EXT. IRON POLE		FOC 24C IB		

2.1

FDP and Location Plan (D-Side)



Legend:



FDC



EXT. JOINT



MANHOLE/PIT



EXT. CONCRETE POLE



FOC 12C IB



FOC 24C IB



FOC 48C IB



FDP



NEW JOINT



NEW CONCRETE POLE



EXT. IRON POLE



FOC 12C IB

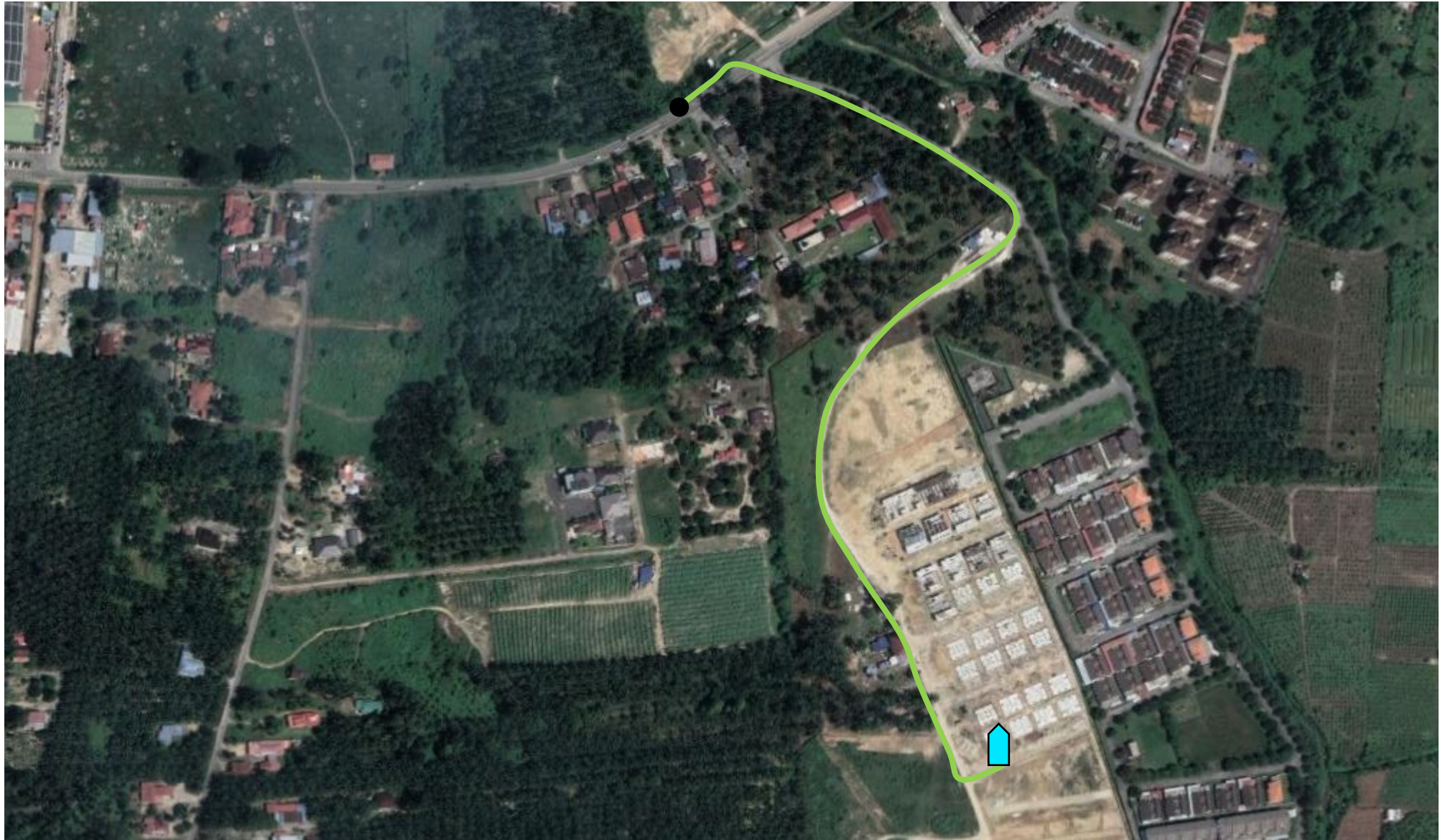


FOC 24C IB



FOC 48C IB

2.1 FDC and Location Plan (E-Side)



Legend:



FDC



FDP



EXT. JOINT



NEW JOINT



MANHOLE/PIT



NEW CONCRETE POLE



EXT. CONCRETE POLE



EXT. IRON POLE



FOC 12C IB



FOC 24C IB



FOC 48C IB

2.2

FDP Boundary

FDP NO.	FDP LOCATION	FDP COVERAGE
DP0001	ANTARA BELAKANG RUMAH NO. 5 & 7, TAMAN MATANG DAMAI, 34750 SIMPANG, PERAK	RUMAH NO. 1,3,5,7,9,11,13, TAMAN MATANG DAMAI, 34750 SIMPANG, PERAK
		RUMAH NO. 2,4,6,8,10,12,14, TAMAN MATANG DAMAI, 34750 SIMPANG, PERAK
DP0002	ANTARA BELAKANG RUMAH NO. 43 & 45, TAMAN MATANG DAMAI, 34750 SIMPANG, PERAK	RUMAH NO. 18,20,22,24,26,28,30,32, TAMAN MATANG DAMAI, 34750 SIMPANG, PERAK
		RUMAH NO. 33,35,37,39,41,43,45,47,49,51,53,55,57, TAMAN MATANG DAMAI, 34750 SIMPANG, PERAK
DP0003	ANTARA HADAPAN RUMAH NO. 25 & 27, TAMAN MATANG DAMAI, 34750 SIMPANG, PERAK	RUMAH NO. 19,21,23,25,27,29,31,33, TAMAN MATANG DAMAI, 34750 SIMPANG, PERAK
DP0004	ANTARA HADAPAN RUMAH NO. 26 & 28, TAMAN MATANG DAMAI, 34750 SIMPANG, PERAK	RUMAH NO. 20,22,24,26,28,30,32,34, TAMAN MATANG DAMAI, 34750 SIMPANG, PERAK
		RUMAH NO. 17,19,21,23,25,27,29, TAMAN MATANG DAMAI, 34750 SIMPANG, PERAK
DP0005	ANTARA HADAPAN RUMAH NO. 22 & 24, TAMAN MATANG DAMAI, 34750 SIMPANG, PERAK	RUMAH NO. 16,18,20,22,24,26,28,30, TAMAN MATANG DAMAI, 34750 SIMPANG, PERAK
		RUMAH NO. 19,21,23,25,27,29,31,33, TAMAN MATANG DAMAI, 34750 SIMPANG, PERAK

2.2

FDP Boundary

FDP NO.	FDP LOCATION	FDP COVERAGE
DP0006	ANTARA HADAPAN RUMAH NO. 26 & 28, TAMAN MATANG DAMAI, 34750 SIMPANG, PERAK	RUMAH NO. 20,22,24,26,28,30,32,34, TAMAN MATANG DAMAI, 34750 SIMPANG, PERAK
DP0007	ANTARA BELAKANG RUMAH NO. 36 & 38, TAMAN MATANG DAMAI, 34750 SIMPANG, PERAK	RUMAH NO. 28,30,32,34,36,38,40,42,44, TAMAN MATANG DAMAI, 34750 SIMPANG, PERAK
		RUMAH NO. 29,31,33,35,37,39,41,43,45,47, TAMAN MATANG DAMAI, 34750 SIMPANG, PERAK
DP0008	ANTARA BELAKANG RUMAH NO. 42 & 44, TAMAN MATANG DAMAI, 34750 SIMPANG, PERAK	RUMAH NO. 32,34,36,38,40,42,44,46,48,50,52, TAMAN MATANG DAMAI, 34750 SIMPANG, PERAK
		RUMAH NO. 33,35,37,39,41,43,45,47,49,51,53, TAMAN MATANG DAMAI, 34750 SIMPANG, PERAK
DP0009	ANTARA BELAKANG RUMAH NO. 48 & 50, TAMAN MATANG DAMAI, 34750 SIMPANG, PERAK	RUMAH NO. 38,40,42,44,46,48,50,52,54,56,58,60, TAMAN MATANG DAMAI, 34750 SIMPANG, PERAK
		RUMAH NO. 23,25,27,29,31,33,35,37, TAMAN MATANG DAMAI, 34750 SIMPANG, PERAK

2.3 CABLE PLAN
2.4 SPUR INFORMATION



PLAN APPROVAL

LOCAL AUTHORITY :

CONFIDENTIAL

These drawings and details are and shall remain the property of TM Technology Services Sdn Bhd. Both are issued in strict confidence and shall not be reproduced, copied or used in any manner without specific written permission from the owner.

LEGENDS

- FDC
- FDP
- EXT. JOINT
- NEW JOINT
- MANHOLE / PIT
- NEW CONCRETE POLE
- EXT. CONCRETE POLE
- EXT. IRON POLE
- FOC 12C IB
- FOC 24C IB
- FOC 48C IB

REV NO.	REV DATE	REV BY	DESCRIPTION



30, Jalan Kelisa Emas 2, Taman Kelisa Emas, 13700 Perai, Pulau Pinang

PROJECT TITLE :		PREPARED BY :	INITIAL & DATE :
SRR FTTH SIM2_CXXX TAMAN MATANG DAMAI		AZHAN HARIS	28/12/2024
DRAWING TITLE :		CHECKED BY :	INITIAL & DATE :
TECHNICAL PROPOSAL DRAWING			
DRAWING NO. :	SHEET NO. :	APPROVED BY :	INITIAL & DATE :
TMNA/241910	1 OF 1		

2.5 FDP Details – Normal Project

No	Info	Type	Road/Location	Ports	Properties Covered	Remark
1	DP0001	On Pole	4.811933935114274, 100.69834290999977	8	14	
2	DP0002	On Pole	4.811350135726008, 100.69856329330037	8	21	
3	DP0003	On Pole	4.81100950956097, 100.69871886677365	8	8	
4	DP0004	On Pole	4.810518218522868, 100.69892652564623	8	15	
5	DP0005	On Pole	4.810016685045873, 100.69913288264051	8	16	
6	DP0006	On Pole	4.809617499038102, 100.69929020138963	8	8	
7	DP0007	On Pole	4.807837178089626, 100.6998790015483	8	19	
8	DP0008	On Pole	4.808343644493758, 100.69967552337488	8	22	
9	DP0009	On Pole	4.808855419966576, 100.69948018585404	8	20	

3.2 New Pole details

No	POLE ID	Pole Type	GPS Coordinate
1	1	Concrete Pole 7.5m	4.812210, 100.698601
2	2	Concrete Pole 7.5m	4.812062, 100.698399
3	3	Concrete Pole 7.5m	4.812111, 100.698243
4	4	Concrete Pole 7.5m	4.812015, 100.698076
5	5	Concrete Pole 7.5m	4.811779, 100.697965
6	6	Concrete Pole 7.5m	4.811609, 100.698045
7	7	Concrete Pole 7.5m	4.811407, 100.698083
8	8	Concrete Pole 7.5m	4.811198, 100.698198
9	9	Concrete Pole 7.5m	4.811231, 100.698265
10	10	Concrete Pole 7.5m	4.811298, 100.698453
11	11	Concrete Pole 7.5m	4.811374, 100.698619
12	12	Concrete Pole 7.5m	4.811439, 100.698737
13	13	Concrete Pole 7.5m	4.811486, 100.698875
14	14	Concrete Pole 7.5m	
15	15	Concrete Pole 7.5m	
16	16	Concrete Pole 7.5m	
17	17	Concrete Pole 7.5m	
18	18	Concrete Pole 7.5m	

3.3

New Pole Illustration



3.3

New Pole Illustration



3.3

New Pole Illustration



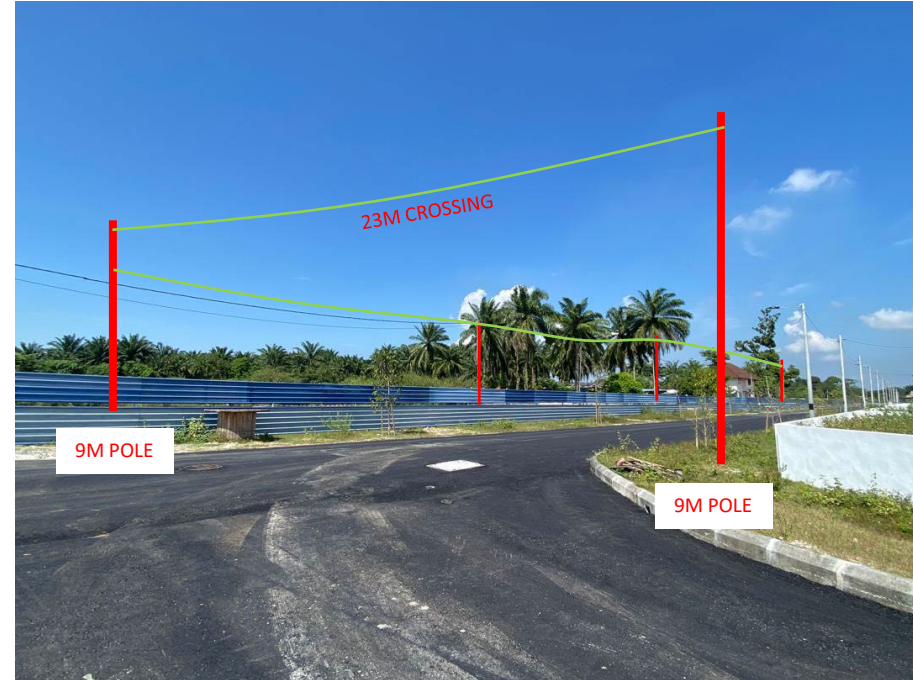
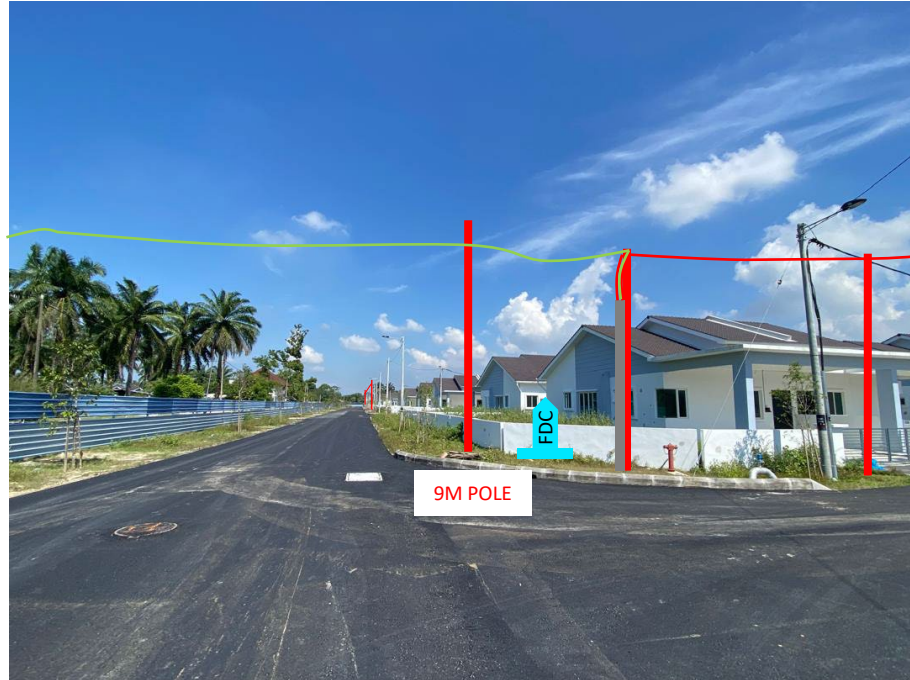
3.3 New Pole Illustration



3.3 New Pole Illustration

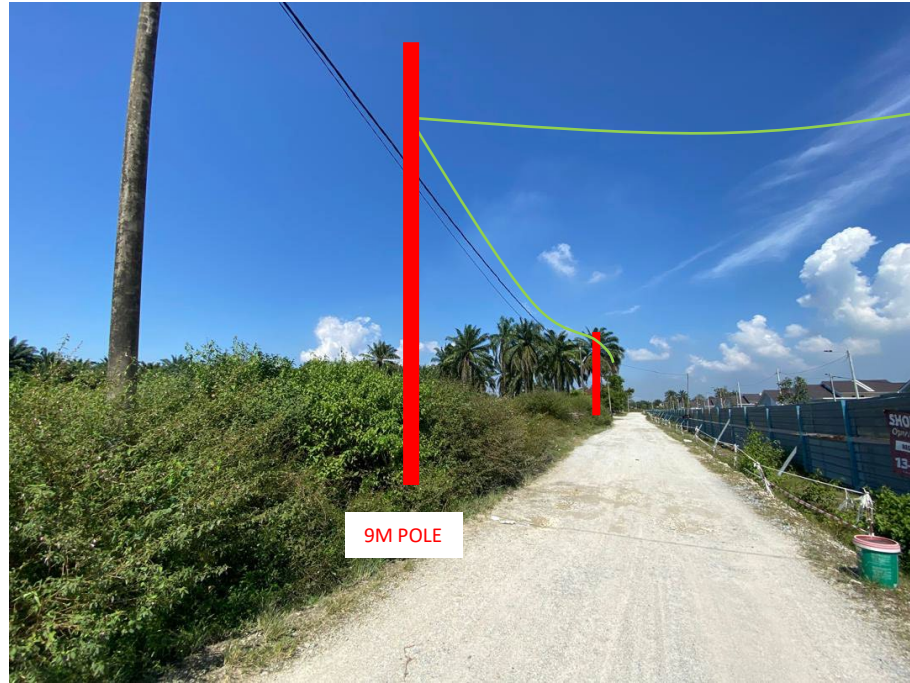


3.3 New Pole Illustration



3.3

New Pole Illustration



3.3 New Pole Illustration



3.3 New Pole Illustration



3.3

New Pole Illustration



3.3 New Pole Illustration



5.1 Fiber/Civil Accessories

FDP



Supplier : Fiberhome
Model/Spec :

FOC Cable



Supplier : Fiberhome
Model/Spec :

5.1 Fiber/Civil Accessories

POLE 7.5/9M



Supplier : PMW
Model/Spec :

4.1 BIL OF QUANTITY - BOQ

Contract NO	3400038940
Vendor No	1109532
Project No	TMNA/241910
Region	NORTHERN
Exchange	TP
BOQ Date	26 DECEMBER 2024
LOR ID	PRK-SNR-2430850-TP



No	PU ID	PU DESC	RATE	REQ QUANTITY	TOTAL
1	908045	CPP SURU UP TO 152 PORT (ORI MAX)	464.00	72	34,911.36
2	908101	COMMERCIAL S/I FOC 48C OH(ORI MAX)	12.53	1300	17,022.01
3	108728	INSTALLATION OF POLES WITH ACCESSORIES	96.40	79	7,615.60
4	112010	INSTALLATION OF POLES LESS THAN 4 POLES	294.50	4	1,178.00
5	108536	MILLING THE ROAD & PREMIX M2	66.98	6	401.88
TOTAL COST					61,128.85

BOQ Prepared by:	AZHAN HARIS
Company Name:	SINOR
Date:	26/12/2024
BOQ Revision:	0

END OF TECHNICAL PROPOSAL