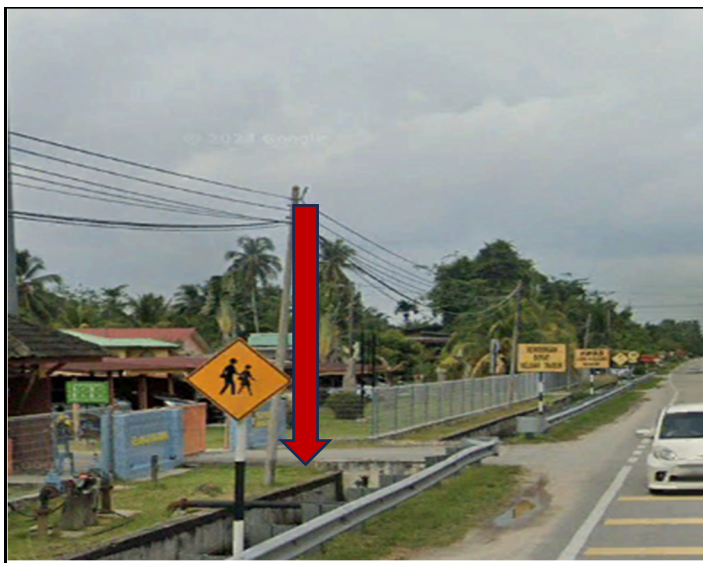


TECHNICAL PROPOSAL

POP2 ABA3016 SEKOLAH KEBANGSAAN JALAN BAHARU (D-SIDE)

| | | |
|-----------------|---|--|
| Company Name | : | SEGALA DELIMA (M) SDN BHD |
| Company Address | : | No. 8, Jalan Ampang Baru 6B, Pusat Perdagangan Baru, 31350 Ipoh, Perak |
| Prepared By | : | Mohamad Helmi |
| Date | : | 11/01/2025 |



Point A



Point B

Starting Point

| | | |
|----------------------|---|---------------------------------|
| Site / Boundary Name | : | Sekolah Kebangsaan Jalan Baharu |
| District | : | Parit Buntar |
| Postcode | : | 34200 |
| State | : | Perak |
| GPS Coordinate | : | 5.060772 100.468403 |
| LRD | : | A |

End Point

| | | |
|----------------------|---|---------------------------------|
| Site / Boundary Name | : | Sekolah Kebangsaan Jalan Baharu |
| Address | : | Jalan Baharu |
| District | : | Parit Buntar |
| Postcode | : | 34200 |
| State | : | Perak |
| GPS Coordinate | : | 5.054189 100.468947 |
| LRD | : | B |

1.0 WORK SUMMARY

| NO | PROPOSED DISTANCE AND METHOD | UNIT | QUANTITY |
|-------|---------------------------------------|------|----------|
| 1 | Horizontal Directional Drilling (HDD) | m | 0 |
| 2 | Carriage Way Open Trench(CW) | m | 0 |
| 3 | Grass Verge Open Trenching (GV) | m | 0 |
| 4 | Micro Trenching (MT) | m | 0 |
| Total | | | 0 |

| NO | OTHER INFORMATION | UNIT | QUANTITY |
|----|--|------|----------|
| 1 | Installation of Short Span ADSS Fiber Cables | m | 1556 |
| 2 | Install New Pole | ea | 53 |
| 3 | Install New JRC7 Manhole | ea | - |
| 4 | Install GI Riser 100mm | ea | - |
| 5 | Install Fiber Distribution Point and Closure (Splicing, Termination and Testing) | ea | 13 |
| 6 | Estimated Time Required for Completion | days | 60 |

2.0 LOCAL AUTHORITY SUMMARY

Daerah Kerian

| NO | ITEMS | Owner | Quantity | Distance (m) |
|---------------------------|----------|-----------------------|----------|--------------|
| 1 | HDD | JKR | - | - |
| | | Majlis | - | - |
| | | Estate / Private Land | - | - |
| 2 | New Pole | JKR | 18 | 599 |
| | | Majlis | 35 | 957 |
| | | Estate / Private Land | - | - |
| Total Distance (m) | | | | 1,556 |

3.0 SITE PLAN (KMZ)

3.1 Overview Site Area (Propose New Pole)



3.2 Proposed FDP and Closure



3.3 Site Plan - KMZ Routing (All Local Authority)



Red Colour - JKR

Road Blue Colour - Majlis Road

3.0 PROPOSED NEW MANHOLE

| Proposed New Manhole Coordinate | | | | | |
|---------------------------------|----------------|--------------|----------|-----------|-----------------|
| No. | Manhole Number | Distance (m) | Latitude | Longitude | Local Authority |
| 1 | MH01 | - | - | - | - |
| 2 | MH02 | - | - | - | - |

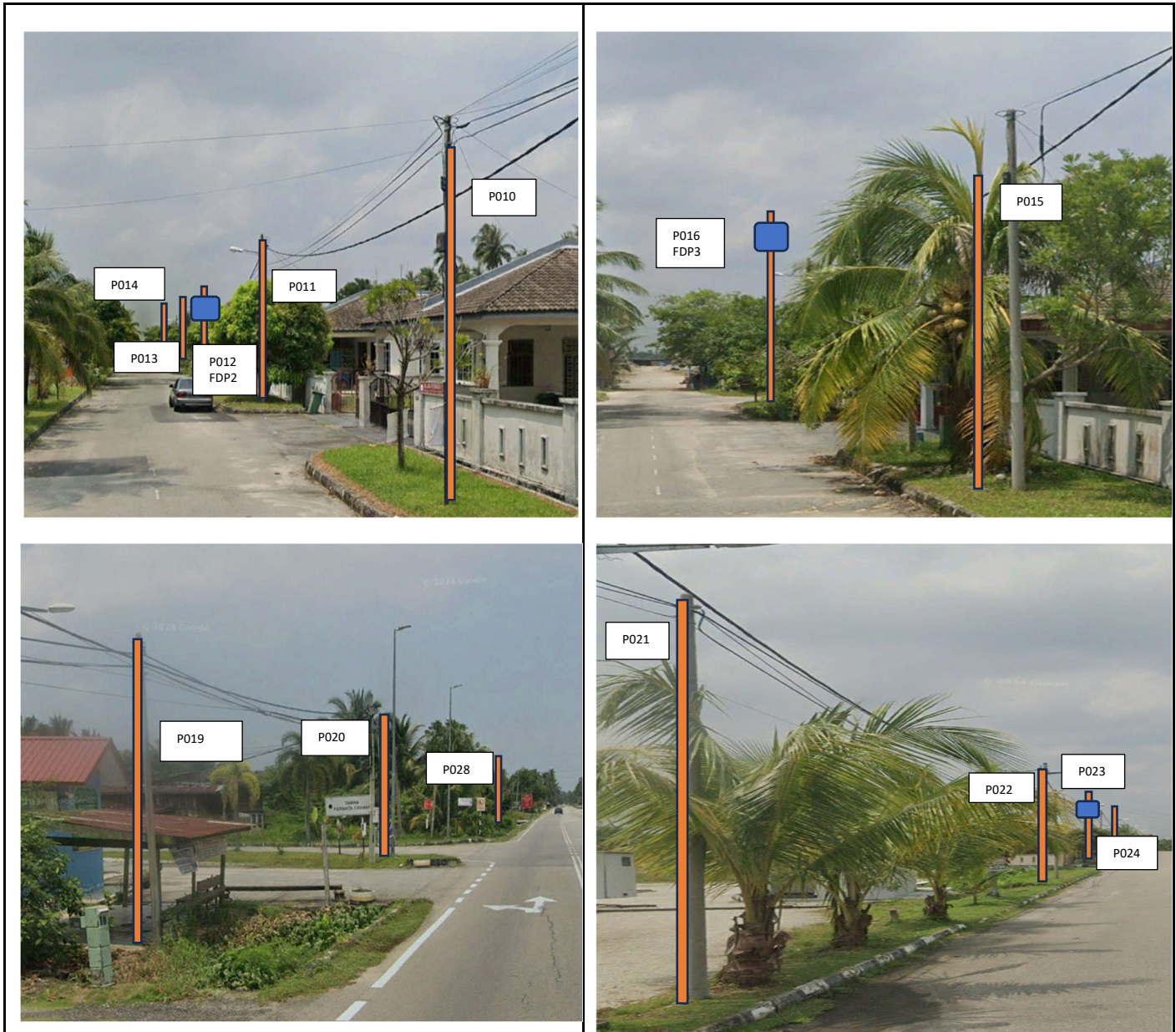
4.0 PROPOSED NEW POLE

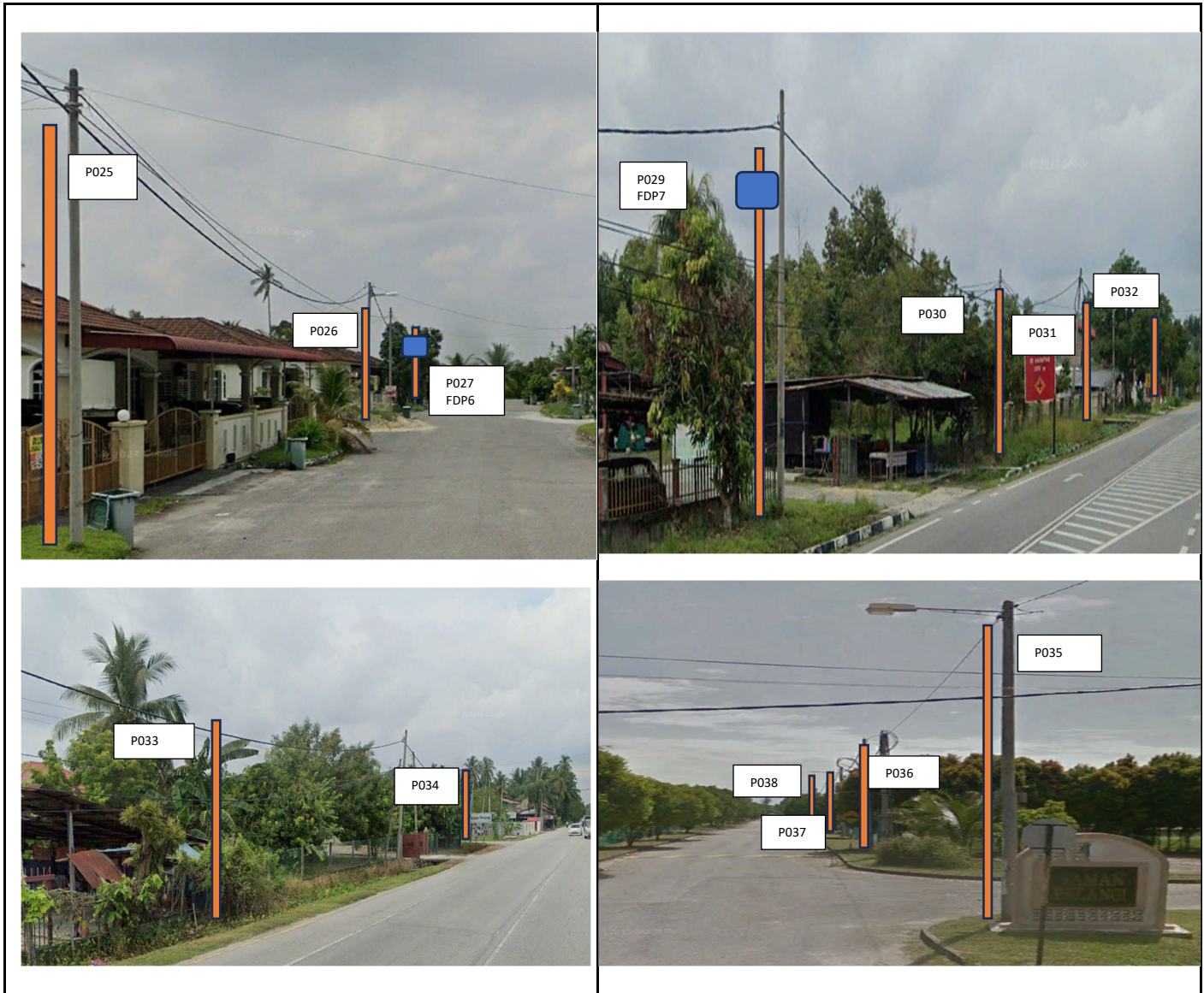
| Proposed New Pole Coordinate | | | | | |
|------------------------------|-------------|--------------|----------|------------|----------------------|
| No. | Pole Number | Distance (m) | Latitude | Longitude | Local Authority |
| 1 | T001 | 30M | 5.060772 | 100.468403 | JKR Daerah Kerian |
| 2 | T002 | 40M | 5.060511 | 100.468211 | JKR Daerah Kerian |
| 3 | T003 | 30M | 5.060211 | 100.468006 | JKR Daerah Kerian |
| 4 | T004 | 32M | 5.059925 | 100.467805 | JKR Daerah Kerian |
| 5 | T005 | 15M | 5.059645 | 100.467601 | JKR Daerah Kerian |
| 6 | T006 | 25M | 5.059458 | 100.467499 | JKR Daerah Kerian |
| 7 | T007 | 25M | 5.059333 | 100.467702 | Majlis Daerah Kerian |
| 8 | T008 | 25M | 5.059253 | 100.467858 | Majlis Daerah Kerian |
| 9 | T009 | 25M | 5.059148 | 100.468010 | Majlis Daerah Kerian |
| 10 | T010 | 25M | 5.059070 | 100.468145 | Majlis Daerah Kerian |
| 11 | T011 | 25M | 5.058916 | 100.468334 | Majlis Daerah Kerian |
| 12 | T012 | 25M | 5.058790 | 100.468530 | Majlis Daerah Kerian |
| 13 | T013 | 25M | 5.058645 | 100.468726 | Majlis Daerah Kerian |
| 14 | T014 | 25M | 5.058526 | 100.468937 | Majlis Daerah Kerian |
| 15 | T015 | 25M | 5.058400 | 100.469117 | Majlis Daerah Kerian |
| 16 | T016 | 25M | 5.058227 | 100.469343 | Majlis Daerah Kerian |
| 17 | T017 | 35M | 5.059241 | 100.467332 | JKR Daerah Kerian |
| 18 | T018 | 35M | 5.058970 | 100.467150 | JKR Daerah Kerian |
| 19 | T019 | 35M | 5.058727 | 100.466984 | JKR Daerah Kerian |
| 20 | T020 | 25M | 5.058591 | 100.466901 | JKR Daerah Kerian |
| 21 | T021 | 25M | 5.058428 | 100.467076 | Majlis Daerah Kerian |
| 22 | T022 | 25M | 5.058278 | 100.467292 | Majlis Daerah Kerian |
| 23 | T023 | 25M | 5.058120 | 100.467548 | Majlis Daerah Kerian |
| 24 | T024 | 25M | 5.057937 | 100.467836 | Majlis Daerah Kerian |
| 25 | T025 | 25M | 5.057743 | 100.468133 | Majlis Daerah Kerian |
| 26 | T026 | 25M | 5.057559 | 100.468372 | Majlis Daerah Kerian |
| 27 | T027 | 25M | 5.057436 | 100.468547 | Majlis Daerah Kerian |
| 28 | T028 | 35M | 5.058341 | 100.466719 | JKR Daerah Kerian |
| 29 | T029 | 35M | 5.058065 | 100.466520 | JKR Daerah Kerian |
| 30 | T030 | 30M | 5.057806 | 100.466329 | JKR Daerah Kerian |
| 31 | T031 | 35M | 5.057553 | 100.466151 | JKR Daerah Kerian |
| 32 | T032 | 35M | 5.057341 | 100.465990 | JKR Daerah Kerian |
| 33 | T033 | 35M | 5.057058 | 100.465792 | JKR Daerah Kerian |

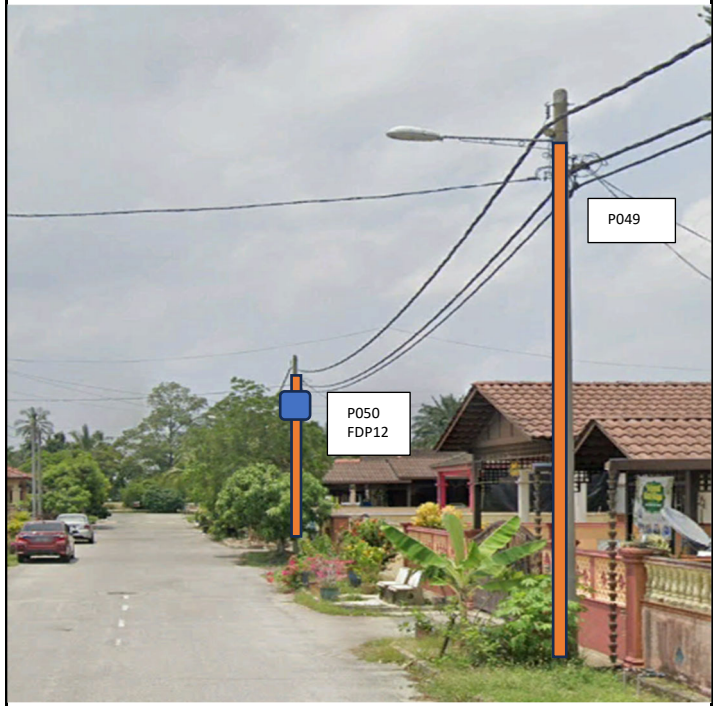
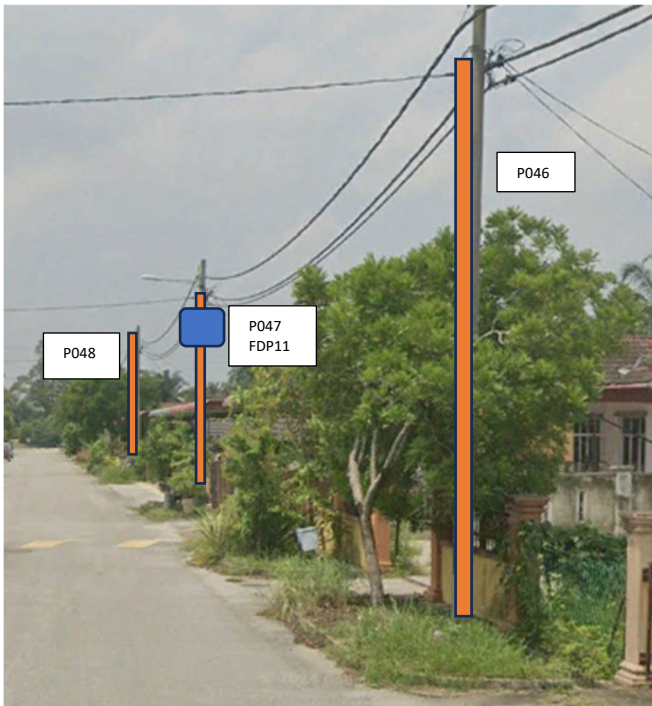
| Proposed New Pole Coordinate | | | | | |
|------------------------------|-------------|--------------|----------|------------|----------------------|
| No. | Pole Number | Distance (m) | Latitude | Longitude | Local Authority |
| 34 | T034 | 20M | 5.056750 | 100.465570 | JKR Daerah Kerian |
| 35 | T035 | 25M | 5.056630 | 100.465529 | JKR Daerah Kerian |
| 36 | T036 | 25M | 5.056510 | 100.465714 | Majlis Daerah Kerian |
| 37 | T037 | 25M | 5.056383 | 100.465892 | Majlis Daerah Kerian |
| 38 | T038 | 25M | 5.056251 | 100.466090 | Majlis Daerah Kerian |
| 39 | T039 | 25M | 5.056136 | 100.466260 | Majlis Daerah Kerian |
| 40 | T040 | 25M | 5.055967 | 100.466494 | Majlis Daerah Kerian |
| 41 | T041 | 25M | 5.055799 | 100.466708 | Majlis Daerah Kerian |
| 42 | T042 | 25M | 5.055663 | 100.466908 | Majlis Daerah Kerian |
| 43 | T043 | 25M | 5.055532 | 100.467100 | Majlis Daerah Kerian |
| 44 | T044 | 25M | 5.055402 | 100.467291 | Majlis Daerah Kerian |
| 45 | T045 | 25M | 5.055258 | 100.467495 | Majlis Daerah Kerian |
| 46 | T046 | 25M | 5.055119 | 100.467688 | Majlis Daerah Kerian |
| 47 | T047 | 25M | 5.054970 | 100.467894 | Majlis Daerah Kerian |
| 48 | T048 | 25M | 5.054810 | 100.468107 | Majlis Daerah Kerian |
| 49 | T049 | 25M | 5.054677 | 100.468299 | Majlis Daerah Kerian |
| 50 | T050 | 25M | 5.054518 | 100.468515 | Majlis Daerah Kerian |
| 51 | T051 | 25M | 5.054371 | 100.468715 | Majlis Daerah Kerian |
| 52 | T052 | 25M | 5.054189 | 100.468947 | Majlis Daerah Kerian |
| 53 | T053 | 25M | 5.054087 | 100.469105 | Majlis Daerah Kerian |

5.0 SITE PHOTOS - PROPOSED NEW POLE





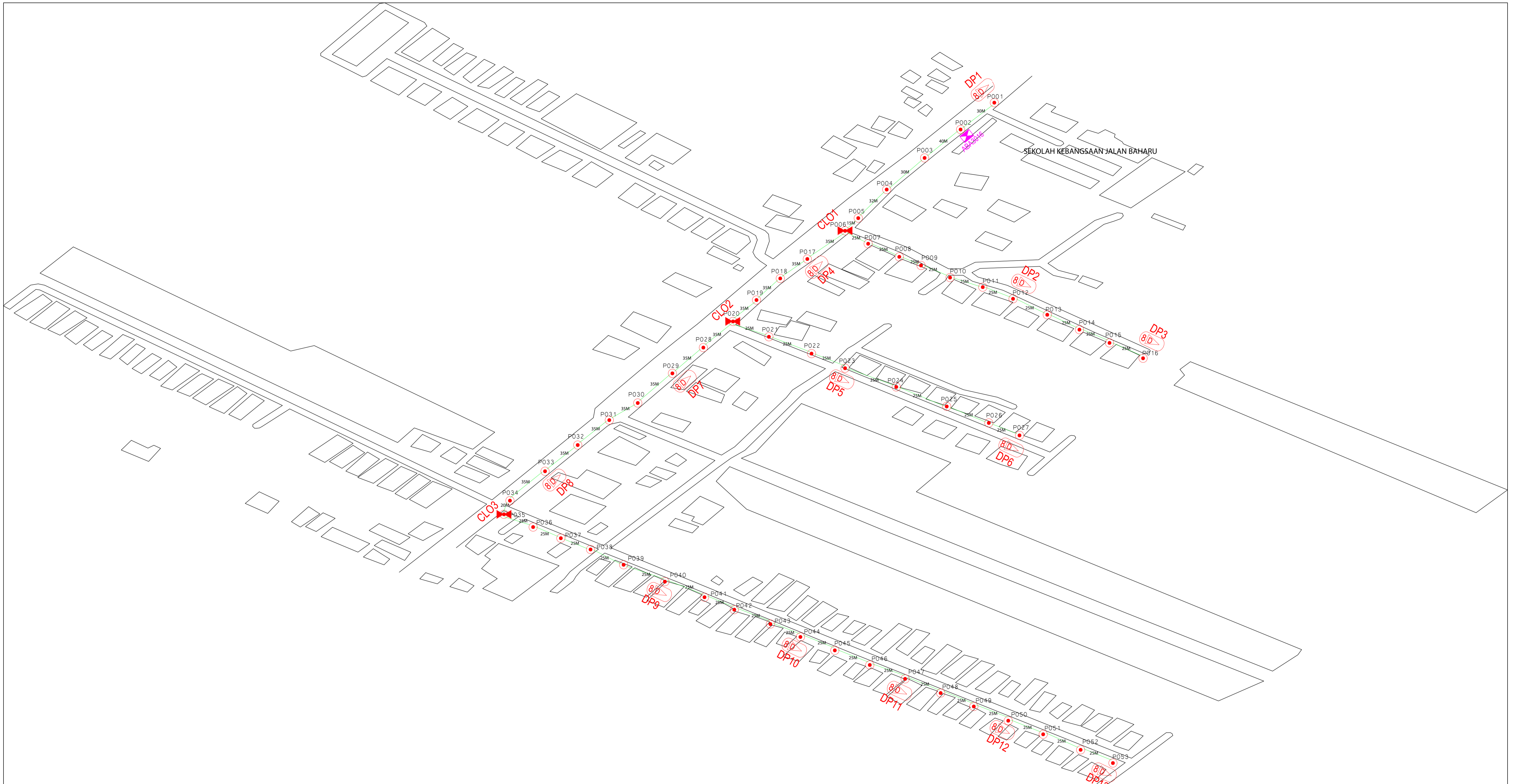






6.0 3rd PARTIES DEPENDENCIES

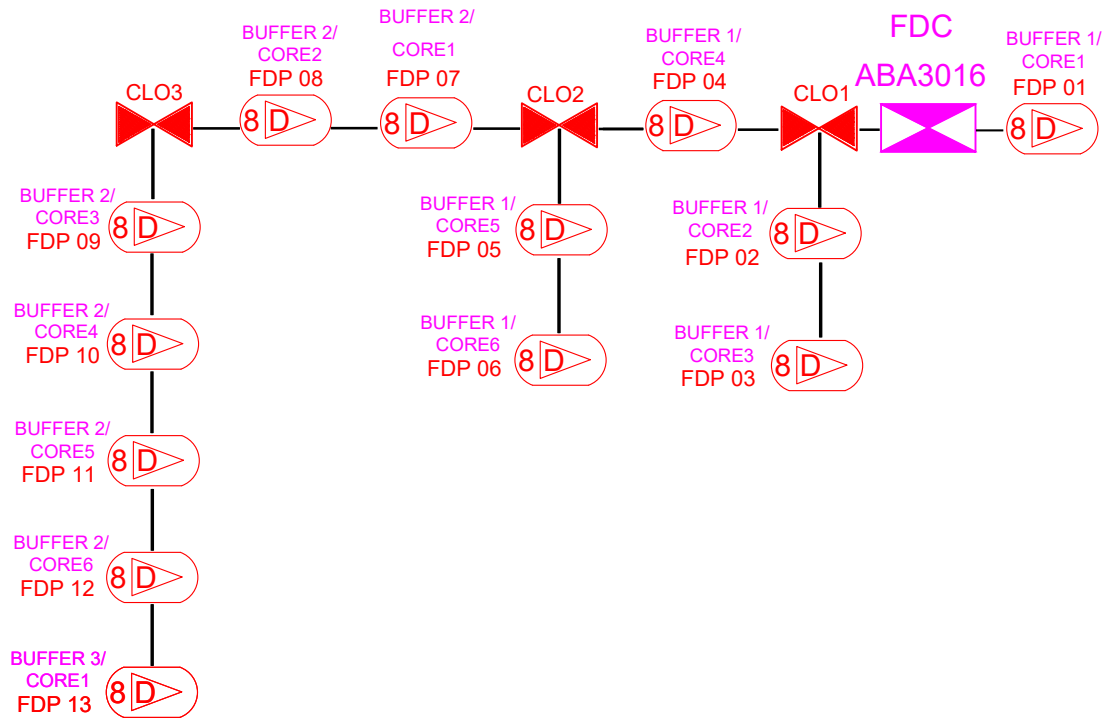
| NO | LOCAL COUNCIL / AUTHORITY | REMARK |
|----|---------------------------|--------|
| 1 | Majlis Daerah Kerian | 957m |
| 2 | JKR Daerah Kerian | 599m |



| | | | | | | | | | | | | | | |
|--|----------|--------|--|-----------------------|----|--|-------------------------|----|-------------------|------------------|-------------------------|------------------------|-----------------------|-------------|
| | 12C FOC | | | Installed Pole (9m) | | | Suspension | | New Manhole (PIT) | | Micro-Trenching (Meter) | | MH NO. | |
| | 24C FOC | 155.6m | | Installed Pole (7.5M) | 53 | | Tension | | New Manhole(JRC7) | | Temporary Infra (Meter) | | Existing TNB Pole NO. | |
| | 48C FOC | | | Installed Pole (6.7M) | | | Pole Ring | | FDP Boundary | | Loop / Coil (Meter) | | New Pole NO. | |
| | 96C FOC | | | Closure | 3 | | FDP with (1:8) splitter | 13 | | HDD (Meter) | | Active Outdoor Cabinet | | Closure NO. |
| | 144C FOC | | | Existing Closure | | | Existing Manhole | | | Open Cut (Meter) | | FDC NO. | | FDP NO. |

ACTUAL HOMEPASS :

| | | | | | | | |
|-----------|----------------|------------------|-----------------|--|--|------------------|---------------|
| KEY PLAN: | PROJECT OWNER: | MAIN CONTRACTOR: | SUB-CONTRACTOR: | PROJECT TITLE: | DRAWING TITLE: | Design By : | Date : |
| | | PRIVASAT | | CONTRACT FOR SURVEY TECHNICAL PROPOSE AND WAYLEAVE & PERMITTING APPROVAL - POP 2 PROJECT | ABA3016 SEKOLAH KEBANGSAAN JALAN BAHARU | Drawn By : | : 28 NOV 2024 |
| | | | | | PROJECT PHASE: | Checked By : | Scale : |
| | | | | | POP 2 PROJECT | DRAWING NUMBER : | 1 : 5000 |
| | | | | | | | Job Number : |
| | | | | | | | Sheet : |
| | | | | | | | 1 / 1 |
| | | | | | | | Size : |
| | | | | | | | A1 |



| | | | | | | | |
|----------|-------------------------------------|-----------------------|-------------------------|-------------------|-------------------------|-------|-----------------------|
| 12C FOC | Installed 1:4 / 1:8 / 1:32 splitter | Installed Pole (9m) | Suspension | New Manhole (PIT) | Micro-Trenching (Meter) | MH | MH NO. |
| 24C FOC | Installed Patch Cord | Installed Pole (7.5M) | Tension | New Manhole (RC7) | Temporary Infra (Meter) | TNS-1 | Existing TNB Pole NO. |
| 48C FOC | FDC | Installed Pole (6.7M) | Pole Ring | FDP Boundary | Loop / Coil (Meter) | PS01 | New Pole NO. |
| 96C FOC | Closure | Existing TNB Pole | FDP with (1:8) splitter | HDD (Meter) | Active Outdoor Cabinet | CLO1 | Closure NO. |
| 144C FOC | Existing Closure | Installed Riser | Existing Manhole | Open Cut (Meter) | FDC NO. | DPT | FDP NO. |

| | | | | | | | |
|-----------|--------------------|----------------------|---------------------|---|--|------------------|------------------|
| KEY PLAN: | PROJECT OWNER: | MAIN CONTRACTOR: | SUB-CONTRACTOR: | PROJECT TITLE: ABA3016 SEKOLAH KEBANGSAAN JALAN BAHARU | DRAWING TITLE: CORE ASSIGNMENT DRAWING | Design By : | Date : 2024 |
| | | | | | PROJECT PHASE: POP 2 | Drawn By : | Scale : 1 : 5000 |
| | | | | | | Checked By : | Job Number : |
| | | | | | | DRAWING NUMBER : | Sheet : 1 / 1 |
| | | | | | | | Size : A1 |

ACTUAL HOMEPASS :