

# TECHNICAL PROPOSAL

## POP2 ABAB002 SEKOLAH KEBANGSAAN SERI BARU ( D-SIDE )

**Company Name** : T&H PANJI EMPIRE SDN BHD  
**Company Address** : 39A Jalan Jelapang 5, Pusat Komersial Jelapang, 30020 Ipoh, Perak Darul Ridzuan.  
**Prepared By** : Mat Salleh Bin Mat Zain  
**Date** : 17/12/2024



### Starting Point

**Site / Boundary Name** : Kampung Ladang Baru  
**Address** : Sekolah Kebangsaan Seri Baru  
**District** : Teluk Intan  
**Postcode** : 36000  
**State** : Perak  
**GPS Coordinate** : 3.965534, 100.915494  
**LRD** : A

### End Point

**Site / Boundary Name** : Tanjung Sari  
**Address** : Kampung Tanjung Sari  
**District** : Teluk Intan  
**Postcode** : 36000  
**State** : Perak  
**GPS Coordinate** : 3.985116, 100.905125  
**LRD** : B



PROJEK PENYEDIAAN DAN PENYELENGGARAAN POINT OF PRESENT (POP) FASA 2: HAB INFRASTUKTUR GENTIAN OPTIK BERHAMPIRAN DENGAN SEKOLAH, KAWASAN PERINDUSTRIAN, PREMIS KERAJAAN DAN KOMUNITI SEKITARNYA OLEH KEMENTERIAN KOMUNIKASI MALAYSIA - ZON UTARA (KKMM.400-11/17/132(1))



## 1.0 WORK SUMMARY

NO	PROPOSED DISTANCE AND METHOD	UNIT	QUANTITY
1	Horizontal Directional Drilling (HDD)	m	0
2	Carriage Way Open Trench (CW)	m	0
3	Grass Verge Open Trenching (GV)	m	0
4	Micro Trenching (MT)	m	0
Total			0

NO	OTHER INFORMATION	UNIT	QUANTITY
1	Installation of Short Span ADSS Fiber Cables	m	5000
2	Install New Pole	m	114
3	Install New JRC7 Manhole	m	0
4	Install GI Riser 100mm	ea	0
5	Install Fiber Distribution Point	ea	13
6	Closure (Splicing, Termination and Testing)	ea	3



PROJEK PENYEDIAAN DAN PENYELENGGARAAN POINT OF PRESENT (POP) FASA 2: HAB INFRASTRUKTUR GENTIAN OPTIK BERHAMPIRAN DENGAN SEKOLAH, KAWASAN PERINDUSTRIAN, PREMIS KERAJAAN DAN KOMUNITI SEKITARNYA OLEH KEMENTERIAN KOMUNIKASI MALAYSIA - ZON UTARA (KKMM.400-11/17/132(1))



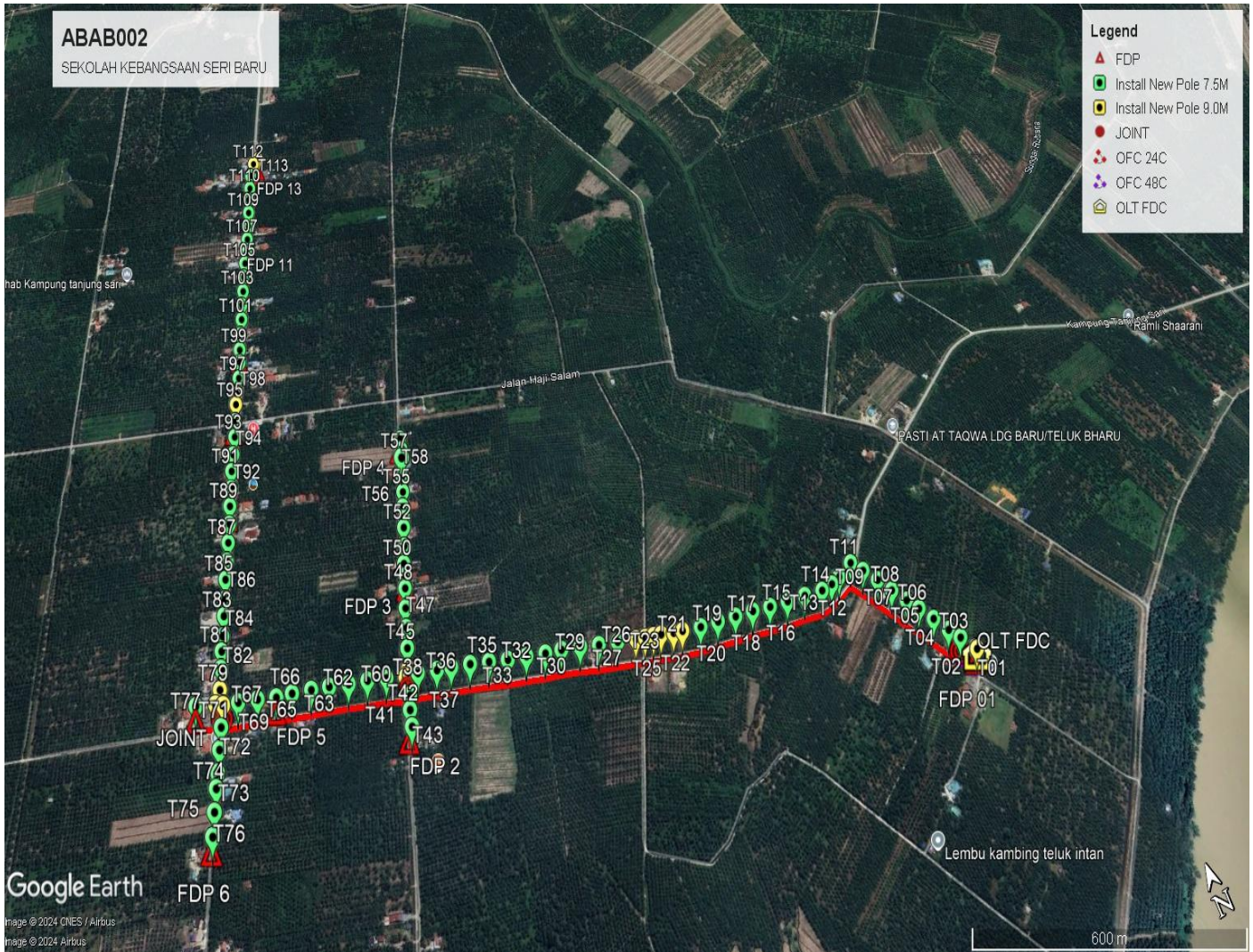
## 2.0 LOCAL AUTHORITY SUMMARY

Daerah Manjung

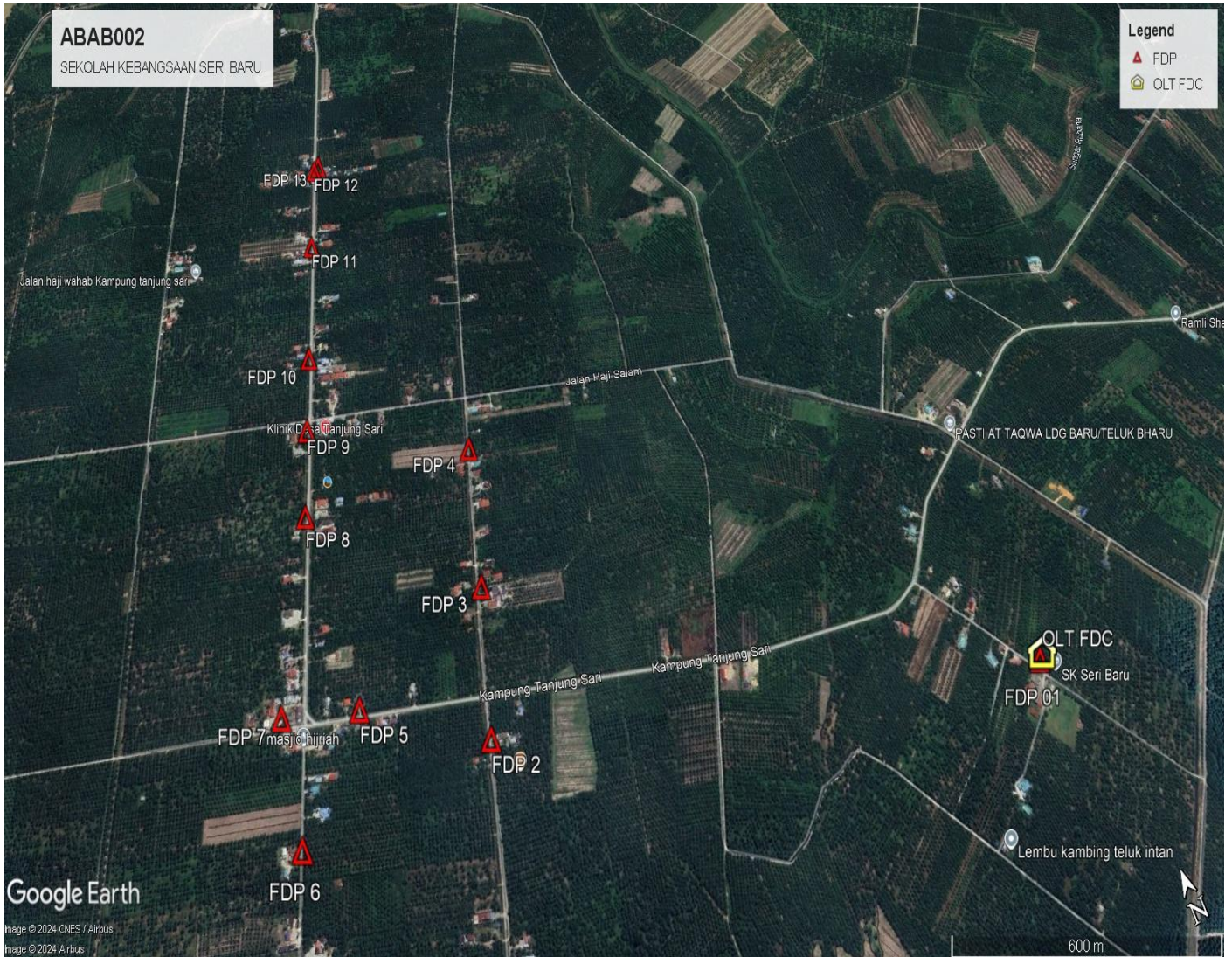
NO	ITEMS	Owner	Quantity	Distance (m)
1	HDD	JKR	-	-
		Majlis	-	-
		Estate / Private Land	-	-
2	New Pole	JKR	-	-
		Majlis	114	5000
		Estate / Private Land	-	-
<b>Total Distance (m)</b>				<b>5000</b>

### 3.0 SITE PLAN (KMZ)

#### 3.1 Overview Site Area



### 3.2 Overview FDP Location





#### 4.0 PROPOSED NEW MANHOLE

Proposed New Manhole Coordinate					
No.	Manhole Number	Distance (m)	Latitude	Longitude	Local Authority
1	MH01	-	-	-	-
2	MH02	-	-	-	-

#### 5.0 PROPOSED NEW POLE

Proposed New Pole Coordinate					
No.	Pole Number	Distance (m)	Latitude	Longitude	Local Authority
1	T001 (OLT&FDC)	5	3.965526	100.915485	Majlis Perbandaran Teluk Intan
2	T002 (FDP 1)	39	3.965569	100.915470	Majlis Perbandaran Teluk Intan
3	T003 (JOINT)	39	3.965877	100.915308	Majlis Perbandaran Teluk Intan
4	T004	41	3.966122	100.915170	Majlis Perbandaran Teluk Intan
5	T005	40	3.966451	100.915003	Majlis Perbandaran Teluk Intan
6	T006	34	3.966766	100.914833	Majlis Perbandaran Teluk Intan
7	T007	40	3.967031	100.914687	Majlis Perbandaran Teluk Intan
8	T008	40	3.967357	100.914518	Majlis Perbandaran Teluk Intan
9	T009	40	3.967685	100.914365	Majlis Perbandaran Teluk Intan
10	T010	35	3.968003	100.914186	Majlis Perbandaran Teluk Intan
11	T011	45	3.968275	100.914034	Majlis Perbandaran Teluk Intan
12	T012	26	3.968159	100.913641	Majlis Perbandaran Teluk Intan
13	T013	31	3.968109	100.913407	Majlis Perbandaran Teluk Intan
14	T014	46	3.968097	100.913132	Majlis Perbandaran Teluk Intan
15	T015	45	3.968187	100.912720	Majlis Perbandaran Teluk Intan
16	T016	46	3.968273	100.912319	Majlis Perbandaran Teluk Intan
17	T017	45	3.968366	100.911913	Majlis Perbandaran Teluk Intan
18	T018	45	3.968467	100.911517	Majlis Perbandaran Teluk Intan
19	T019	45	3.968552	100.911120	Majlis Perbandaran Teluk Intan
20	T020	45	3.968649	100.910721	Majlis Perbandaran Teluk Intan
21	T021	46	3.968739	100.910328	Majlis Perbandaran Teluk Intan
22	T022	22	3.968864	100.909934	Majlis Perbandaran Teluk Intan
23	T023	31	3.968921	100.909741	Majlis Perbandaran Teluk Intan
24	T024	19	3.969021	100.909479	Majlis Perbandaran Teluk Intan
25	T025	20	3.969072	100.909315	Majlis Perbandaran Teluk Intan
26	T026	24	3.969129	100.909135	Majlis Perbandaran Teluk Intan
27	T027	45	3.969203	100.908942	Majlis Perbandaran Teluk Intan
28	T028	45	3.969343	100.908560	Majlis Perbandaran Teluk Intan
29	T029	46	3.969480	100.908166	Majlis Perbandaran Teluk Intan
30	T030	46	3.969640	100.907788	Majlis Perbandaran Teluk Intan
31	T031	40	3.969778	100.907394	Majlis Perbandaran Teluk Intan
32	T032	46	3.969877	100.907052	Majlis Perbandaran Teluk Intan

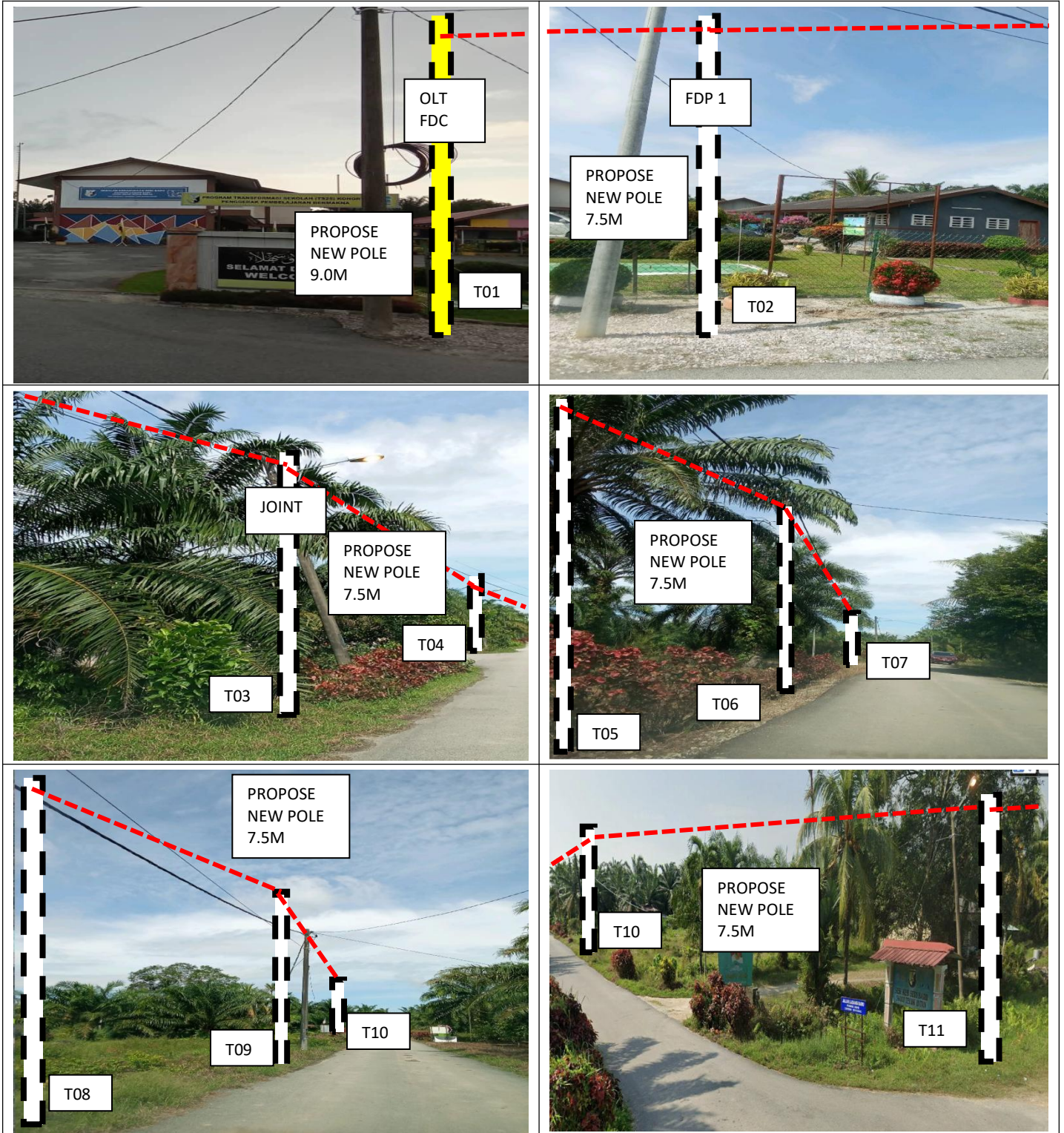
**Proposed New Pole Coordinate**

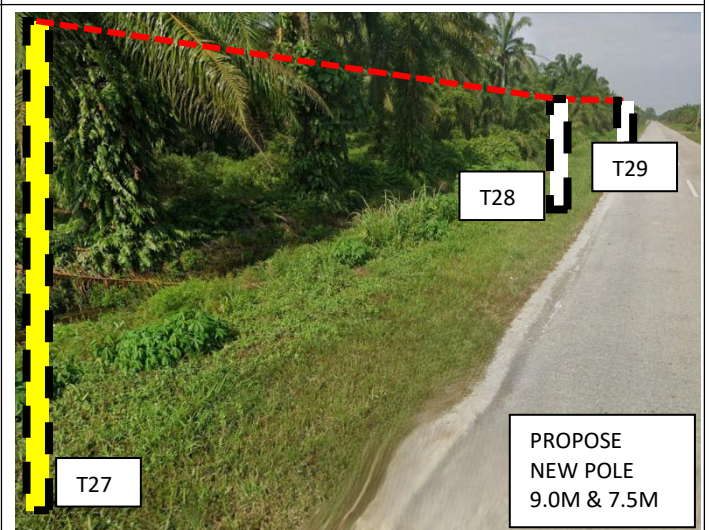
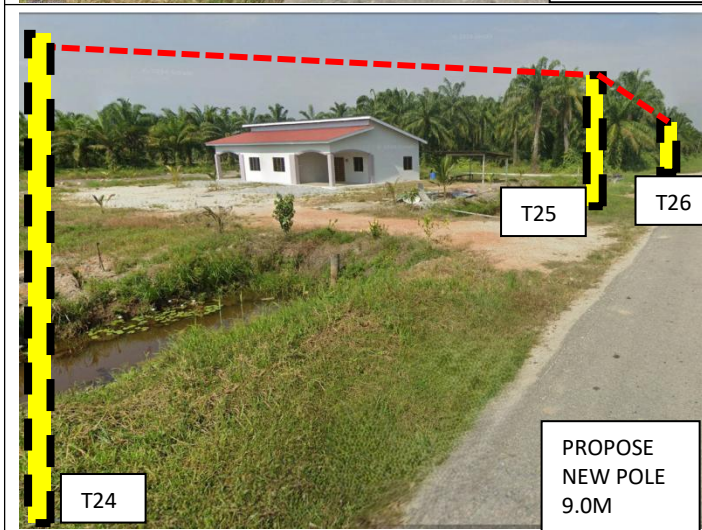
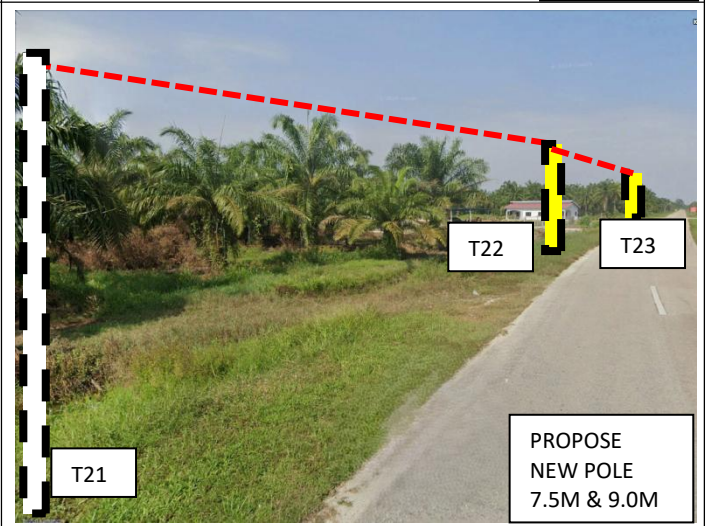
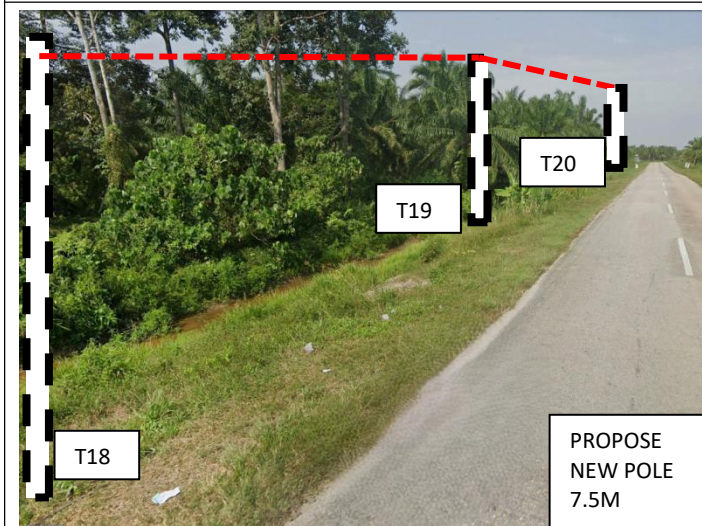
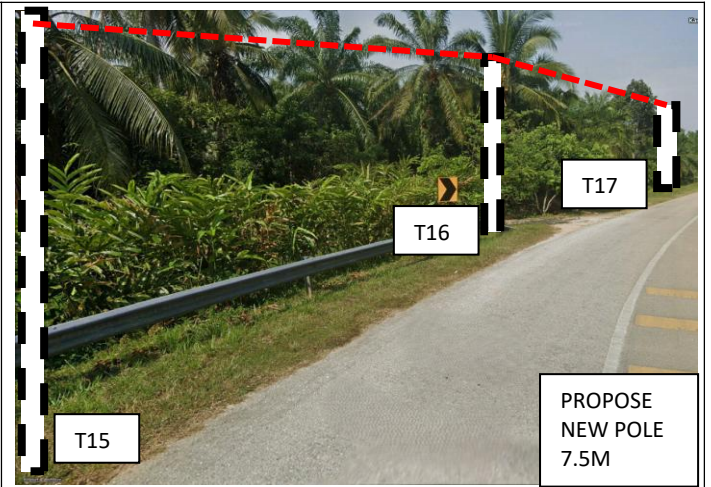
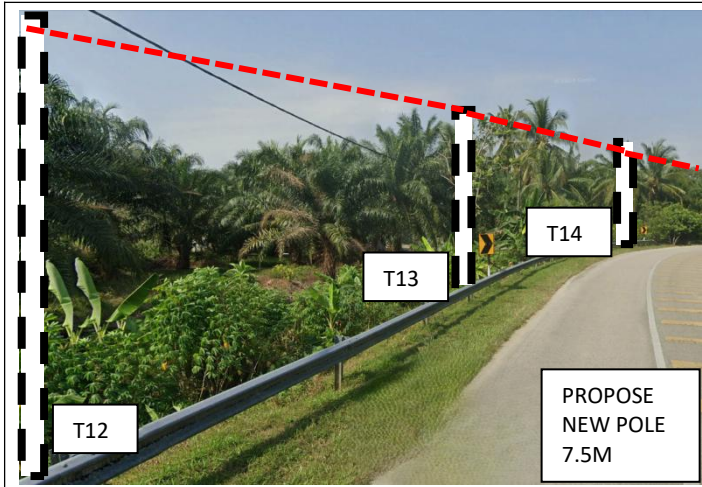
No.	Pole Number	Distance (m)	Latitude	Longitude	Local Authority
33	T033	46	3.970024	100.906663	Majlis Perbandaran Teluk Intan
34	T034	45	3.970156	100.906274	Majlis Perbandaran Teluk Intan
35	T035	46	3.970310	100.905894	Majlis Perbandaran Teluk Intan
36	T036	45	3.970463	100.905512	Majlis Perbandaran Teluk Intan
37	T037	34	3.970604	100.905127	Majlis Perbandaran Teluk Intan
38	T038	46	3.970698	100.904829	Majlis Perbandaran Teluk Intan
39	T039	20	3.970841	100.904442	Majlis Perbandaran Teluk Intan
40	T040 (JOINT)	46	3.970896	100.904281	Majlis Perbandaran Teluk Intan
41	T041	30	3.970548	100.904088	Majlis Perbandaran Teluk Intan
42	T042	35	3.970266	100.903996	Majlis Perbandaran Teluk Intan
43	T043 (FDP 2)	35	3.969970	100.903921	Majlis Perbandaran Teluk Intan
44	T044	13	3.971058	100.904232	Majlis Perbandaran Teluk Intan
45	T045	44	3.971388	100.904356	Majlis Perbandaran Teluk Intan
46	T046	44	3.971784	100.904487	Majlis Perbandaran Teluk Intan
47	T047	45	3.972180	100.904632	Majlis Perbandaran Teluk Intan
48	T048	45	3.972516	100.904758	Majlis Perbandaran Teluk Intan
49	T049 (FDP 3)	28	3.972793	100.904858	Majlis Perbandaran Teluk Intan
50	T050	29	3.973059	100.904937	Majlis Perbandaran Teluk Intan
51	T051	41	3.973396	100.905069	Majlis Perbandaran Teluk Intan
52	T052	45	3.973722	100.905197	Majlis Perbandaran Teluk Intan
53	T053	25	3.973962	100.905286	Majlis Perbandaran Teluk Intan
54	T054	27	3.974217	100.905371	Majlis Perbandaran Teluk Intan
55	T055	39	3.974550	100.905483	Majlis Perbandaran Teluk Intan
56	T056	41	3.974902	100.905592	Majlis Perbandaran Teluk Intan
57	T057	38	3.975217	100.905713	Majlis Perbandaran Teluk Intan
58	T058	33	3.975506	100.905800	Majlis Perbandaran Teluk Intan
59	T059 (FDP 4)	29	3.975711	100.905887	Majlis Perbandaran Teluk Intan
60	T060	12	3.970896	100.904176	Majlis Perbandaran Teluk Intan
61	T061	46	3.971067	100.903805	Majlis Perbandaran Teluk Intan
62	T062	45	3.971214	100.903424	Majlis Perbandaran Teluk Intan
63	T063	45	3.971341	100.903041	Majlis Perbandaran Teluk Intan
64	T064	46	3.971485	100.902653	Majlis Perbandaran Teluk Intan
65	T065	42	3.971613	100.902291	Majlis Perbandaran Teluk Intan
66	T066	46	3.971742	100.901904	Majlis Perbandaran Teluk Intan
67	T067 (FDP 5)	37	3.971825	100.901583	Majlis Perbandaran Teluk Intan
68	T068	43	3.971967	100.901218	Majlis Perbandaran Teluk Intan
69	T069	45	3.972110	100.900836	Majlis Perbandaran Teluk Intan
70	T070	30	3.972215	100.900535	Majlis Perbandaran Teluk Intan
71	T071	45	3.971841	100.900385	Majlis Perbandaran Teluk Intan
72	T072	44	3.971461	100.900243	Majlis Perbandaran Teluk Intan
73	T073	45	3.971078	100.900100	Majlis Perbandaran Teluk Intan

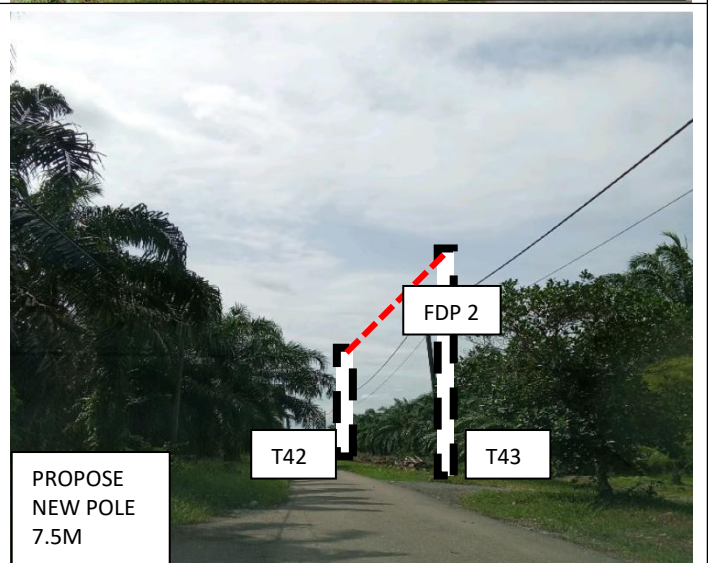
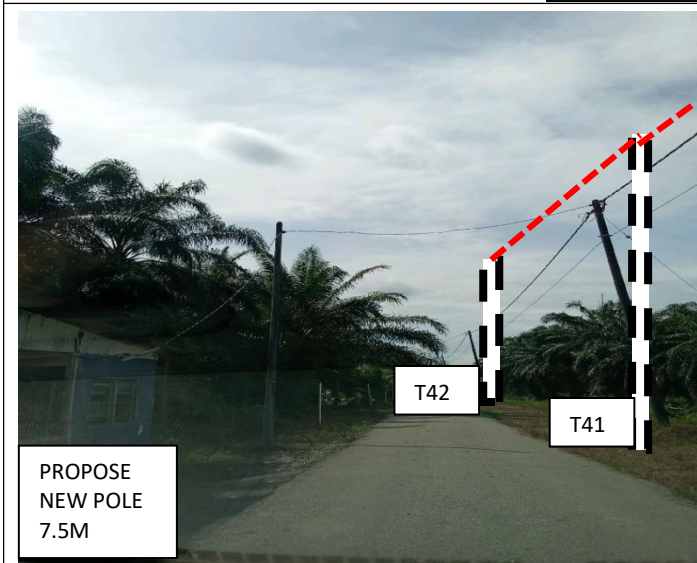
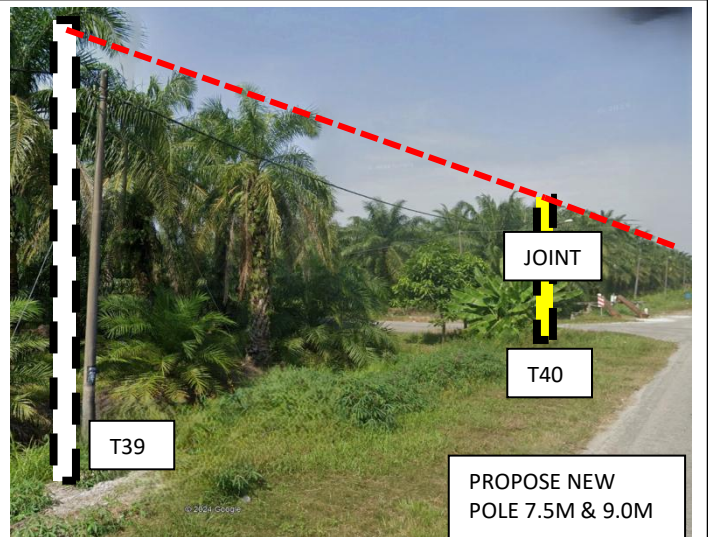
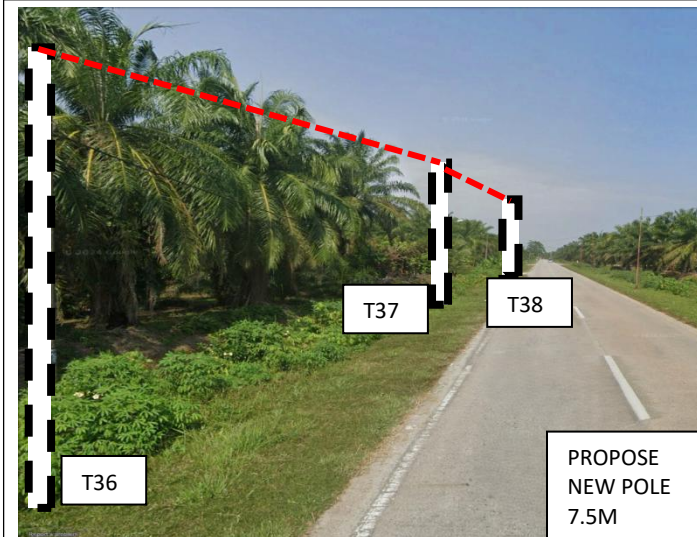
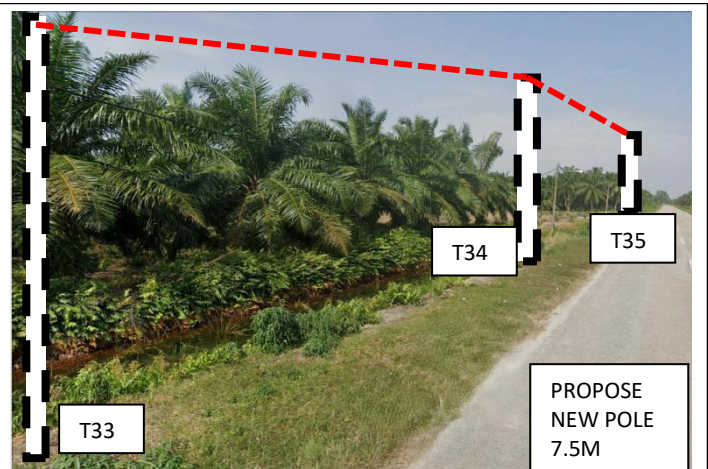
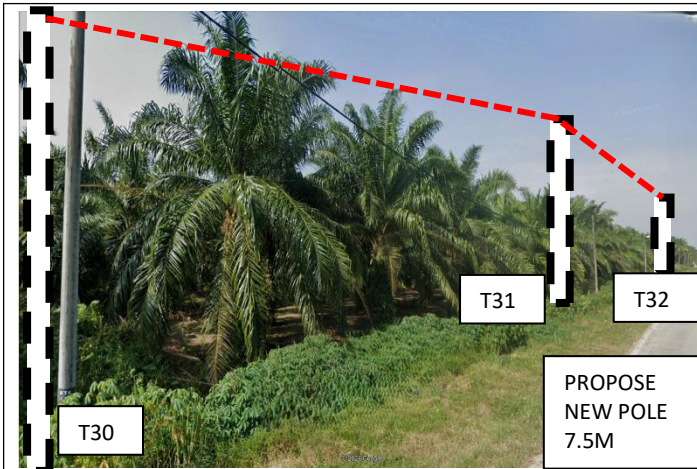
**Proposed New Pole Coordinate**

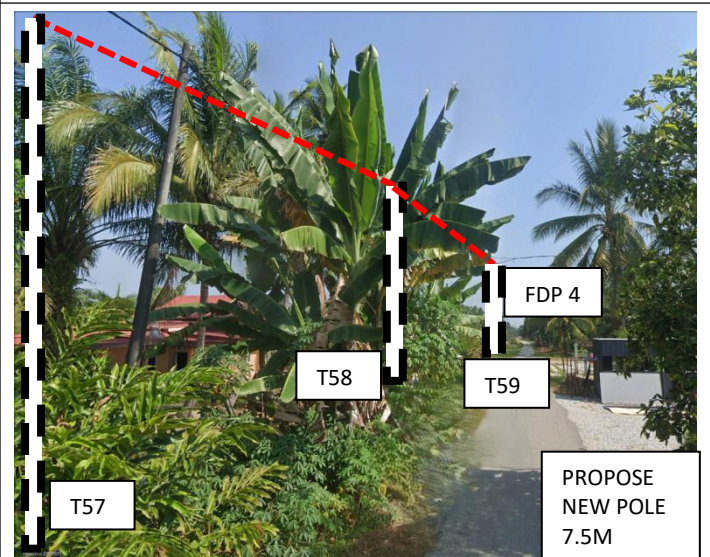
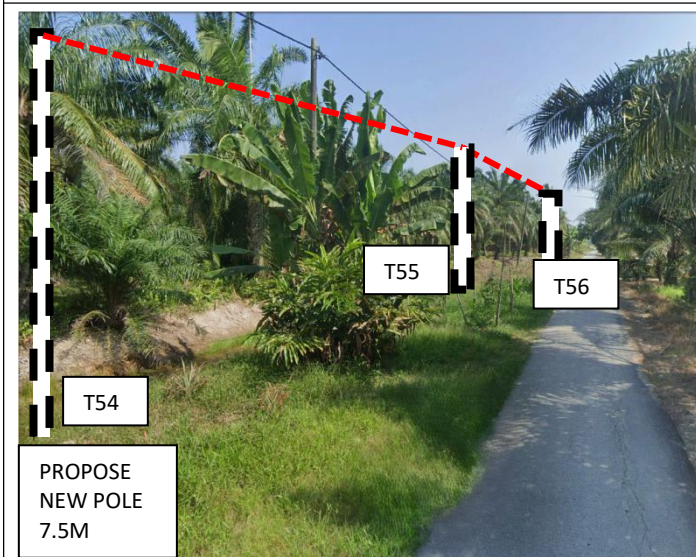
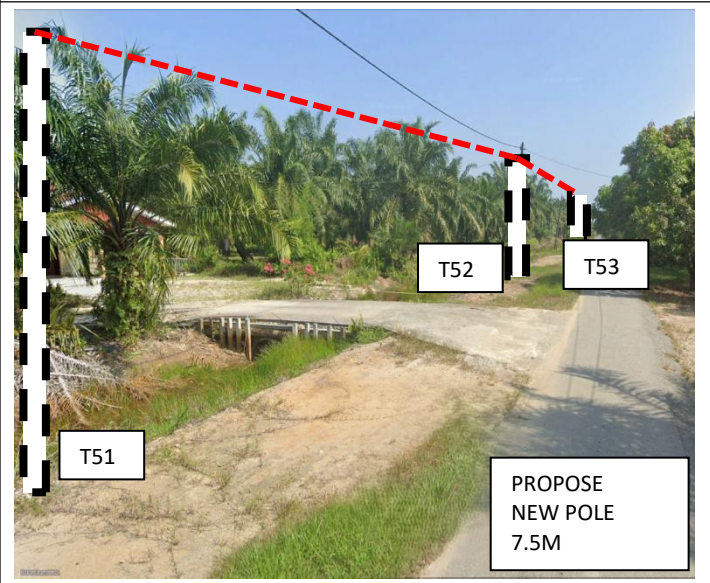
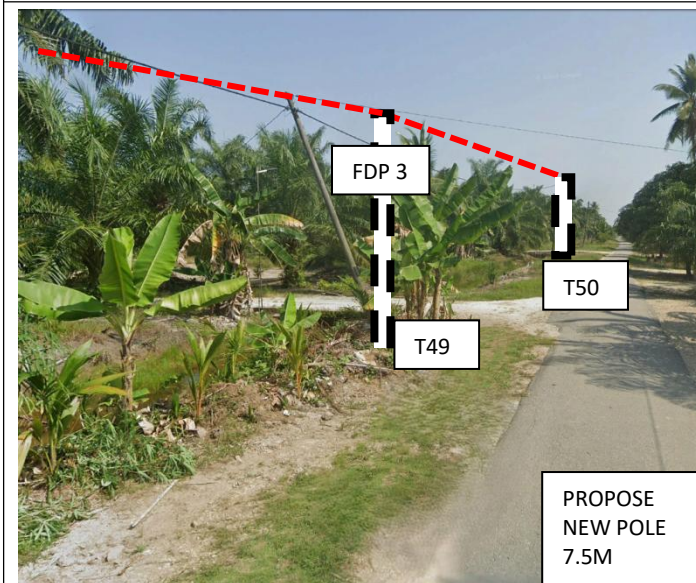
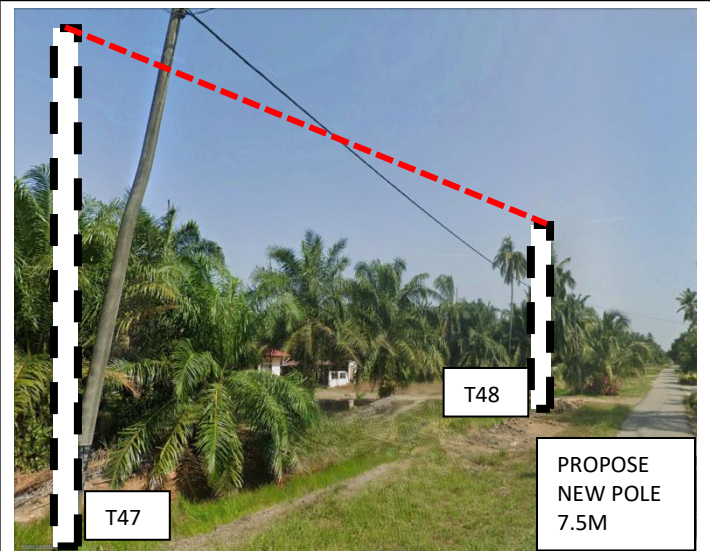
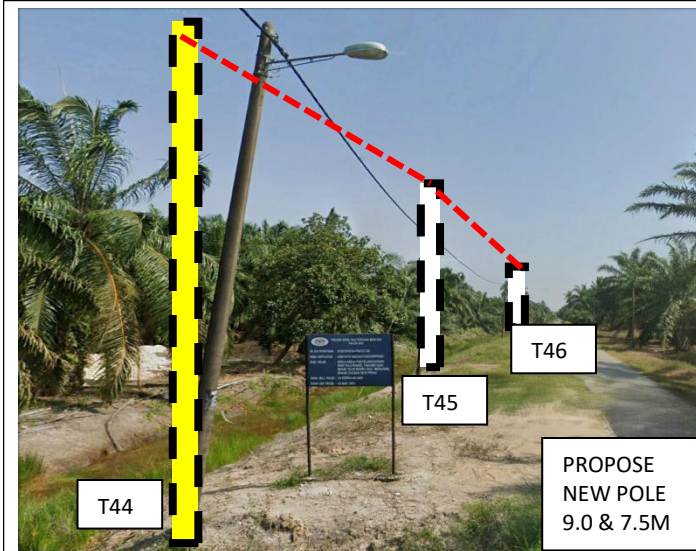
No.	Pole Number	Distance (m)	Latitude	Longitude	Local Authority
74	T074	31	3.970821	100.900000	Majlis Perbandaran Teluk Intan
75	T075	45	3.970440	100.899860	Majlis Perbandaran Teluk Intan
76	T076 (FDP 6)	45	3.970053	100.899717	Majlis Perbandaran Teluk Intan
77	T077	18	3.972309	100.900393	Majlis Perbandaran Teluk Intan
78	T078 (FDP 7)	45	3.972478	100.900011	Majlis Perbandaran Teluk Intan
79	T079	29	3.972523	100.900552	Majlis Perbandaran Teluk Intan
80	T080	45	3.972911	100.900684	Majlis Perbandaran Teluk Intan
81	T081	38	3.973244	100.900785	Majlis Perbandaran Teluk Intan
82	T082	33	3.973528	100.900884	Majlis Perbandaran Teluk Intan
83	T083	44	3.973901	100.901022	Majlis Perbandaran Teluk Intan
84	T084	37	3.974216	100.901133	Majlis Perbandaran Teluk Intan
85	T085	46	3.974618	100.901261	Majlis Perbandaran Teluk Intan
86	T086	44	3.974991	100.901400	Majlis Perbandaran Teluk Intan
87	T087	45	3.975369	100.901534	Majlis Perbandaran Teluk Intan
88	T088	45	3.975755	100.901673	Majlis Perbandaran Teluk Intan
89	T089 (FDP 8)	44	3.976140	100.901793	Majlis Perbandaran Teluk Intan
90	T090	45	3.976528	100.901933	Majlis Perbandaran Teluk Intan
91	T091	45	3.976917	100.902052	Majlis Perbandaran Teluk Intan
92	T092	44	3.977291	100.902196	Majlis Perbandaran Teluk Intan
93	T093	46	3.977682	100.902346	Majlis Perbandaran Teluk Intan
94	T094 (FDP 9)	45	3.978063	100.902468	Majlis Perbandaran Teluk Intan
95	T095	46	3.978461	100.902598	Majlis Perbandaran Teluk Intan
96	T096	32	3.978727	100.902690	Majlis Perbandaran Teluk Intan
97	T097	44	3.979090	100.902851	Majlis Perbandaran Teluk Intan
98	T098	45	3.979473	100.902990	Majlis Perbandaran Teluk Intan
99	T099 (FDP 10)	36	3.979790	100.903082	Majlis Perbandaran Teluk Intan
100	T100	45	3.980171	100.903214	Majlis Perbandaran Teluk Intan
101	T101	45	3.980554	100.903359	Majlis Perbandaran Teluk Intan
102	T102	46	3.980950	100.903476	Majlis Perbandaran Teluk Intan
103	T103	43	3.981317	100.903618	Majlis Perbandaran Teluk Intan
104	T104	46	3.981712	100.903752	Majlis Perbandaran Teluk Intan
105	T105	44	3.982091	100.903894	Majlis Perbandaran Teluk Intan
106	T106	38	3.982406	100.904024	Majlis Perbandaran Teluk Intan
107	T107 (FDP 11)	45	3.982790	100.904155	Majlis Perbandaran Teluk Intan
108	T108	45	3.983173	100.904298	Majlis Perbandaran Teluk Intan
109	T109	45	3.983560	100.904422	Majlis Perbandaran Teluk Intan
110	T110	45	3.983950	100.904540	Majlis Perbandaran Teluk Intan
111	T111	40	3.984286	100.904675	Majlis Perbandaran Teluk Intan
112	T112	45	3.984672	100.904812	Majlis Perbandaran Teluk Intan
113	T113 (FDP 12)	42	3.985008	100.904995	Majlis Perbandaran Teluk Intan
114	T114 (FDP 13)	21	3.985110	100.905153	Majlis Perbandaran Teluk Intan

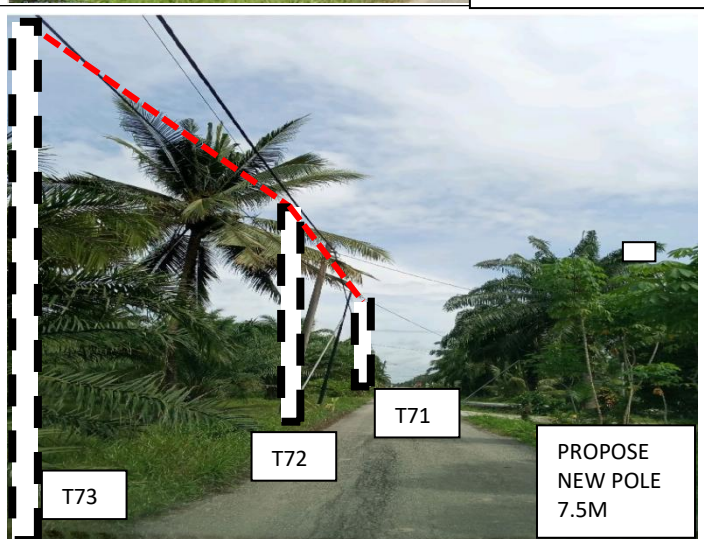
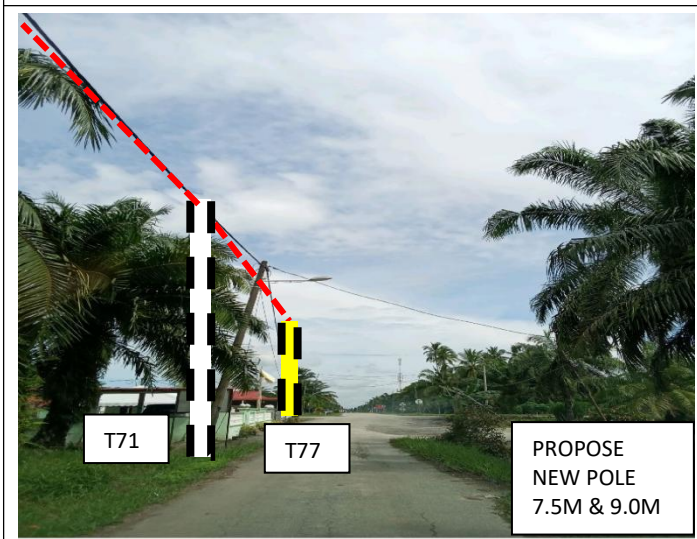
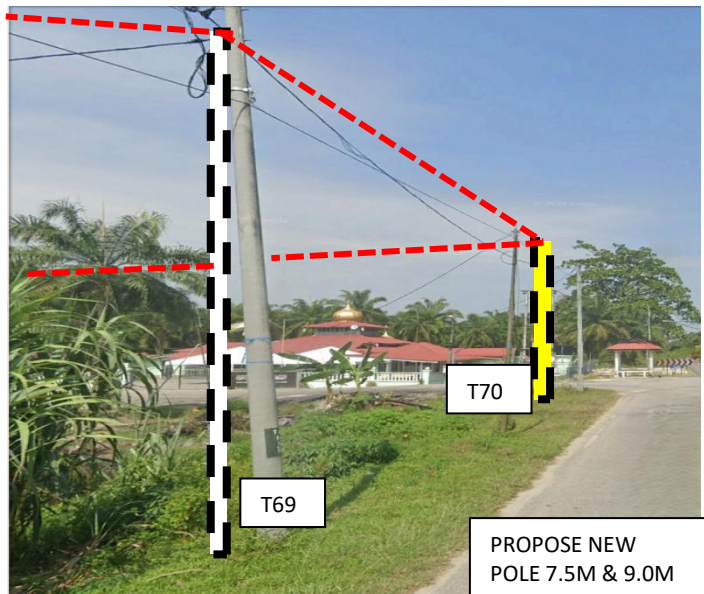
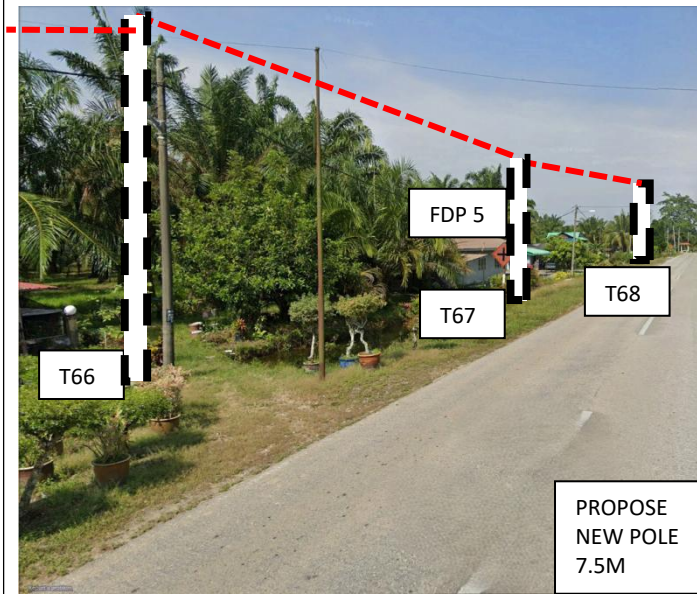
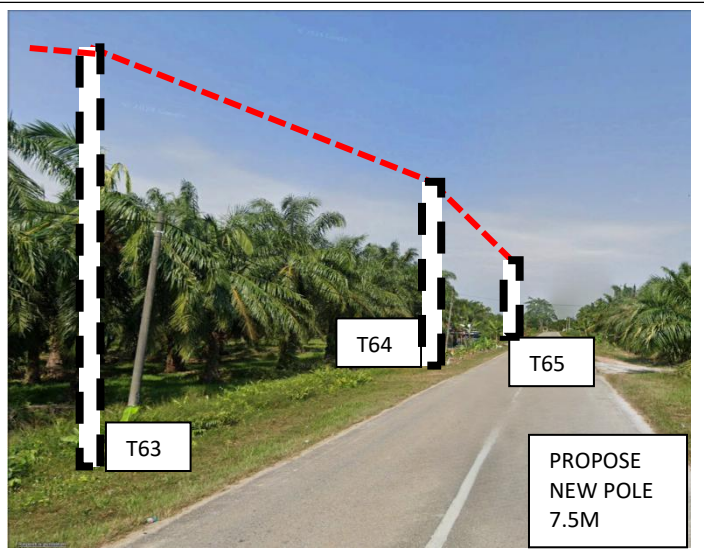
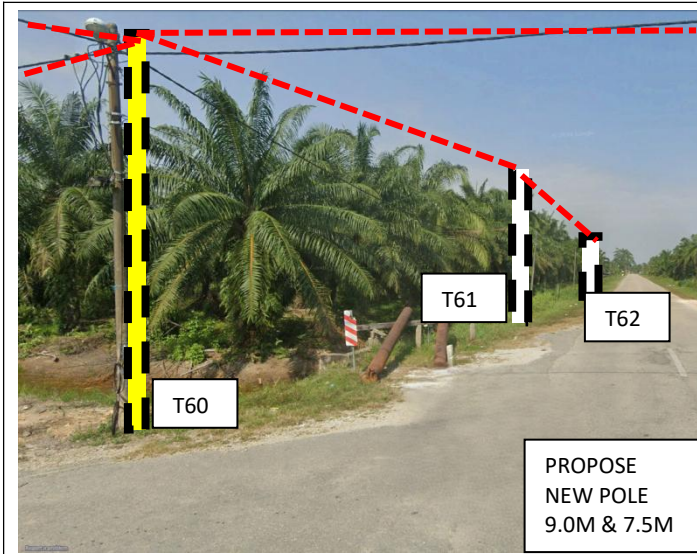
**6.0 SITE PHOTOS - PROPOSED NEW POLE**

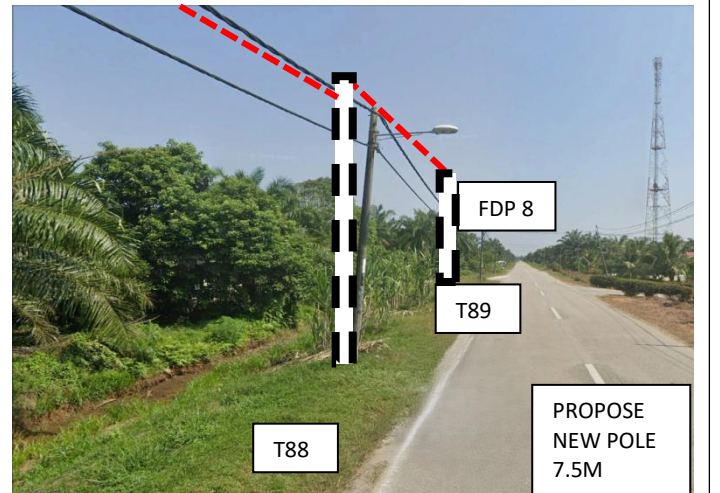
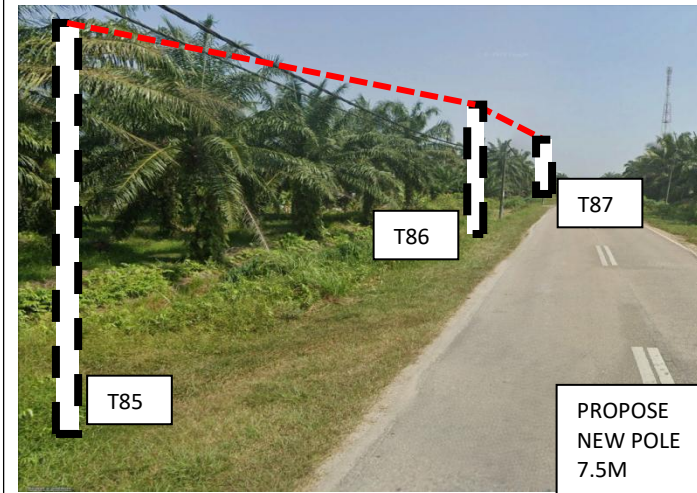
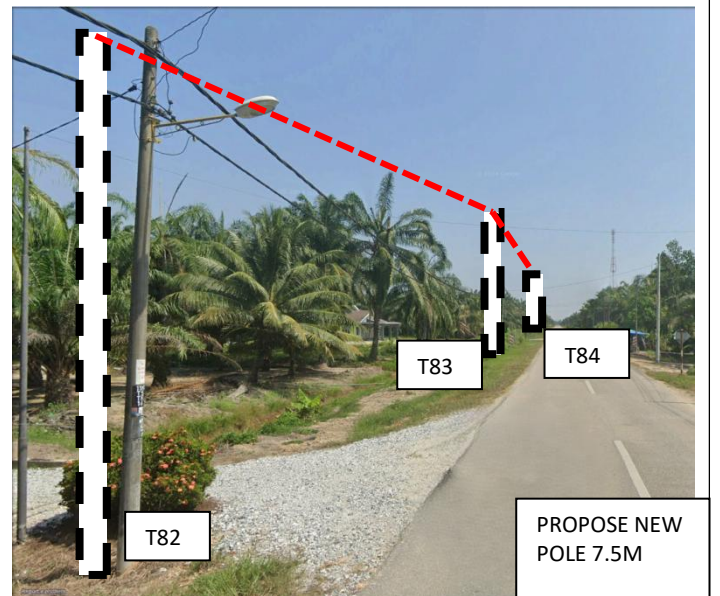
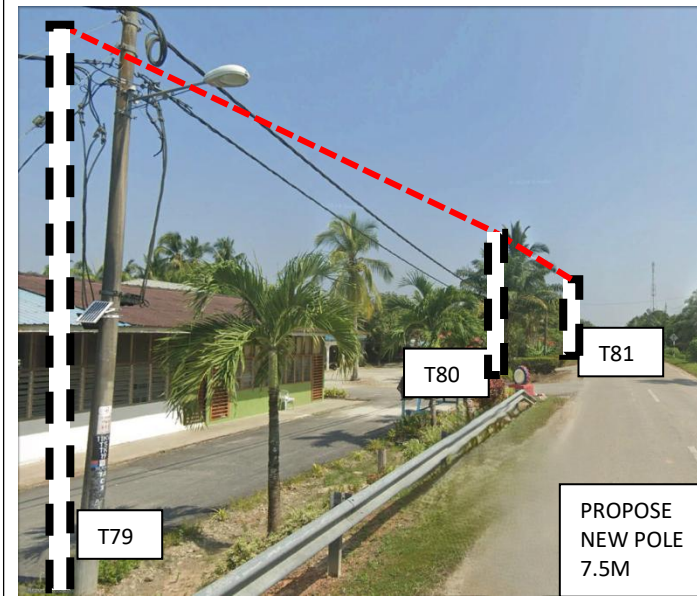
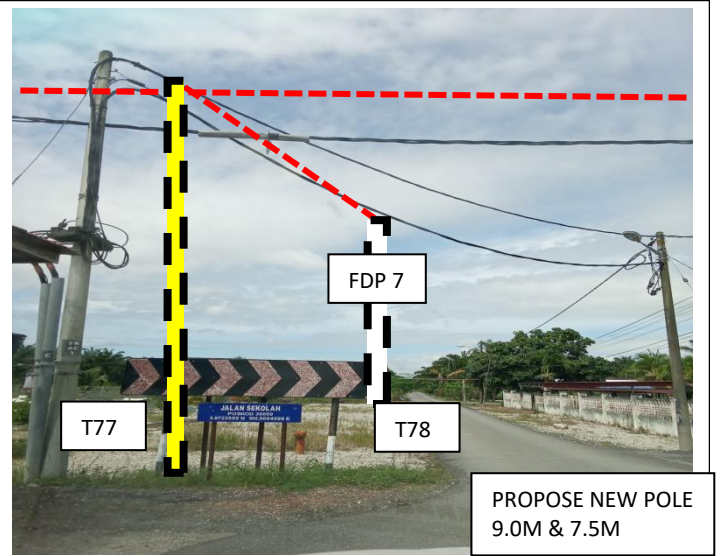
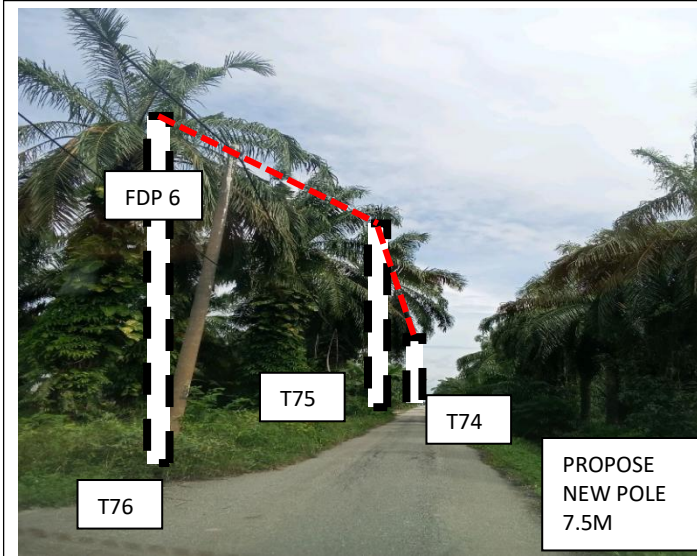


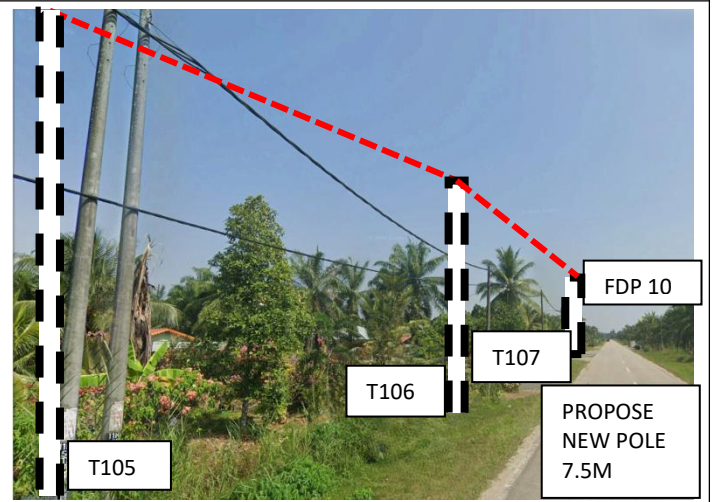
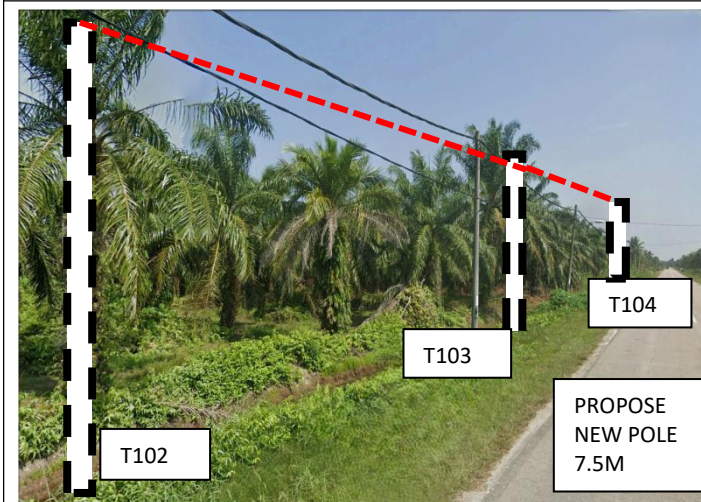
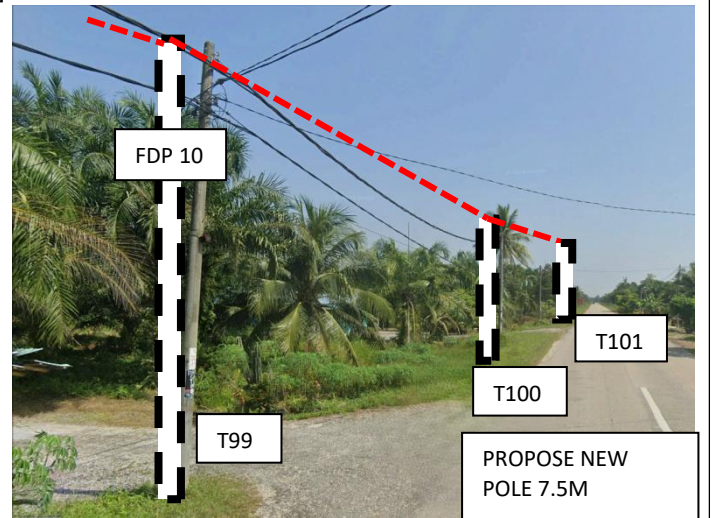
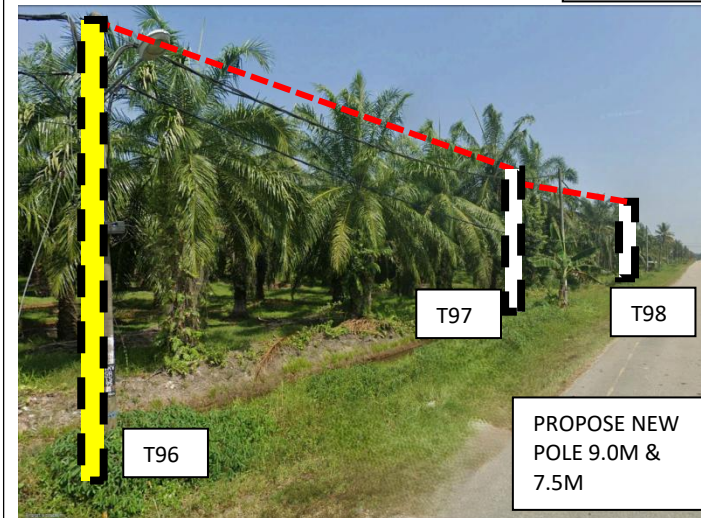
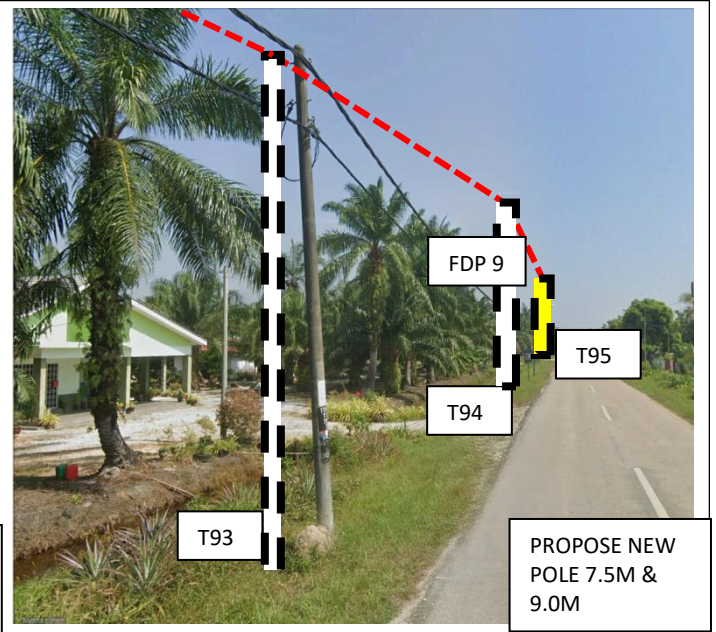
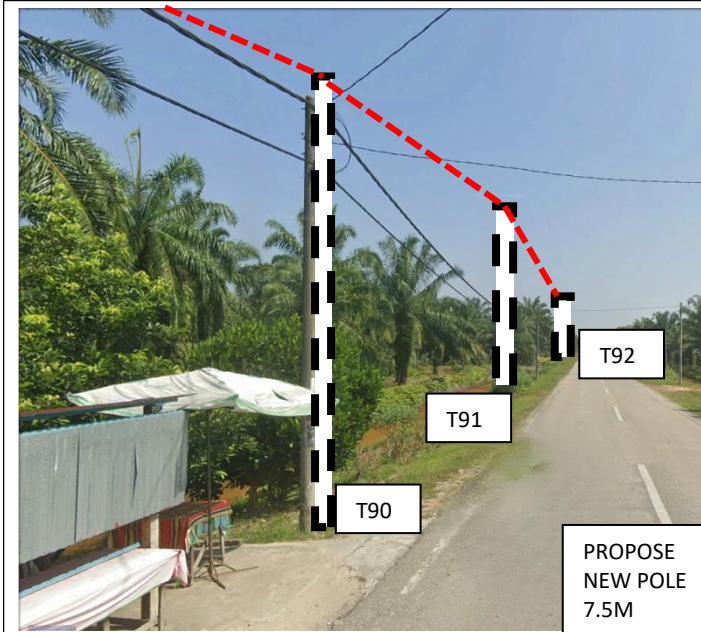


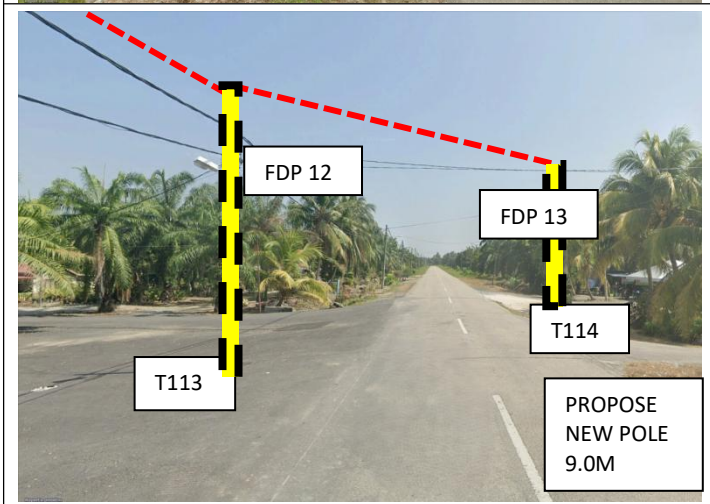
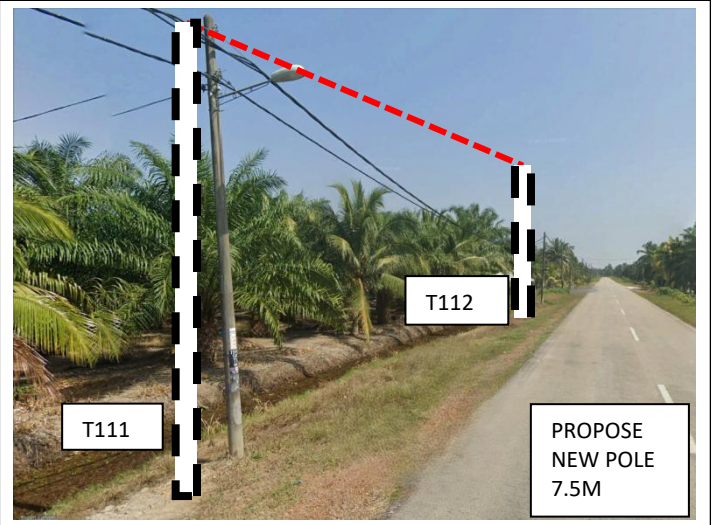
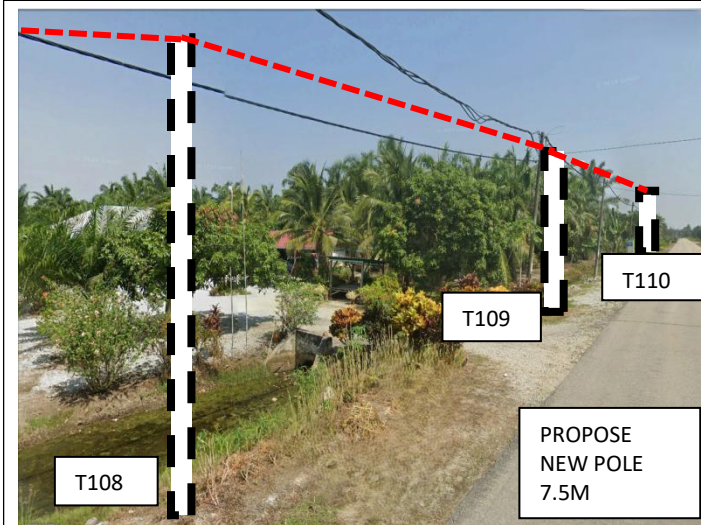














PROJEK PENYEDIAAN DAN PENYELENGGARAAN POINT OF PRESENT (POP) FASA 2: HAB INFRASTRUKTUR GENTIAN OPTIK BERHAMPIRAN DENGAN SEKOLAH, KAWASAN PERINDUSTRIAN, PREMIS KERAJAAN DAN KOMUNITI SEKITARNYA OLEH KEMENTERIAN KOMUNIKASI MALAYSIA - ZON UTARA (KKMM.400-11/17/132(1))

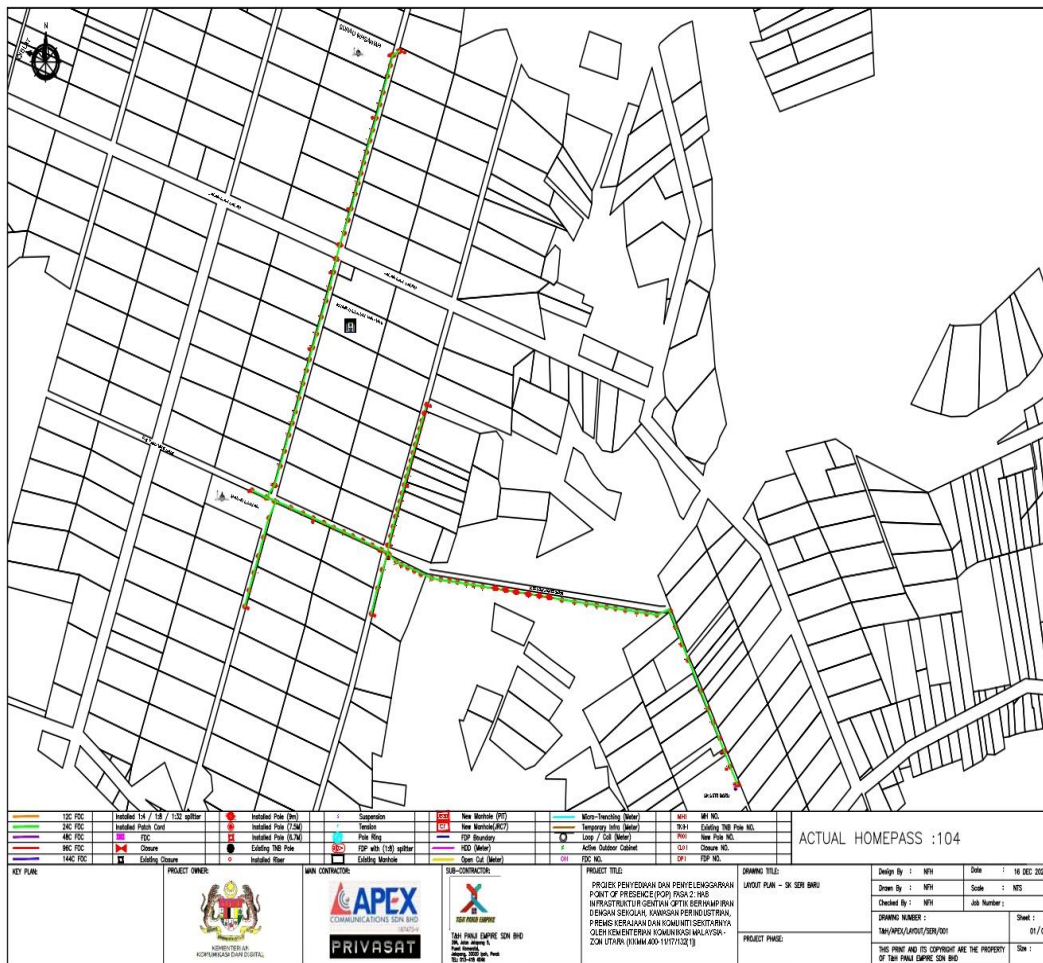


### 7.0 3<sup>rd</sup> PARTIES DEPENDENCIES

NO	LOCAL COUNCIL / AUTHORITY	REMARK
1	Majlis Perbandaran Teluk Intan	5000M

## 8.0 Drawing

### Layout 1

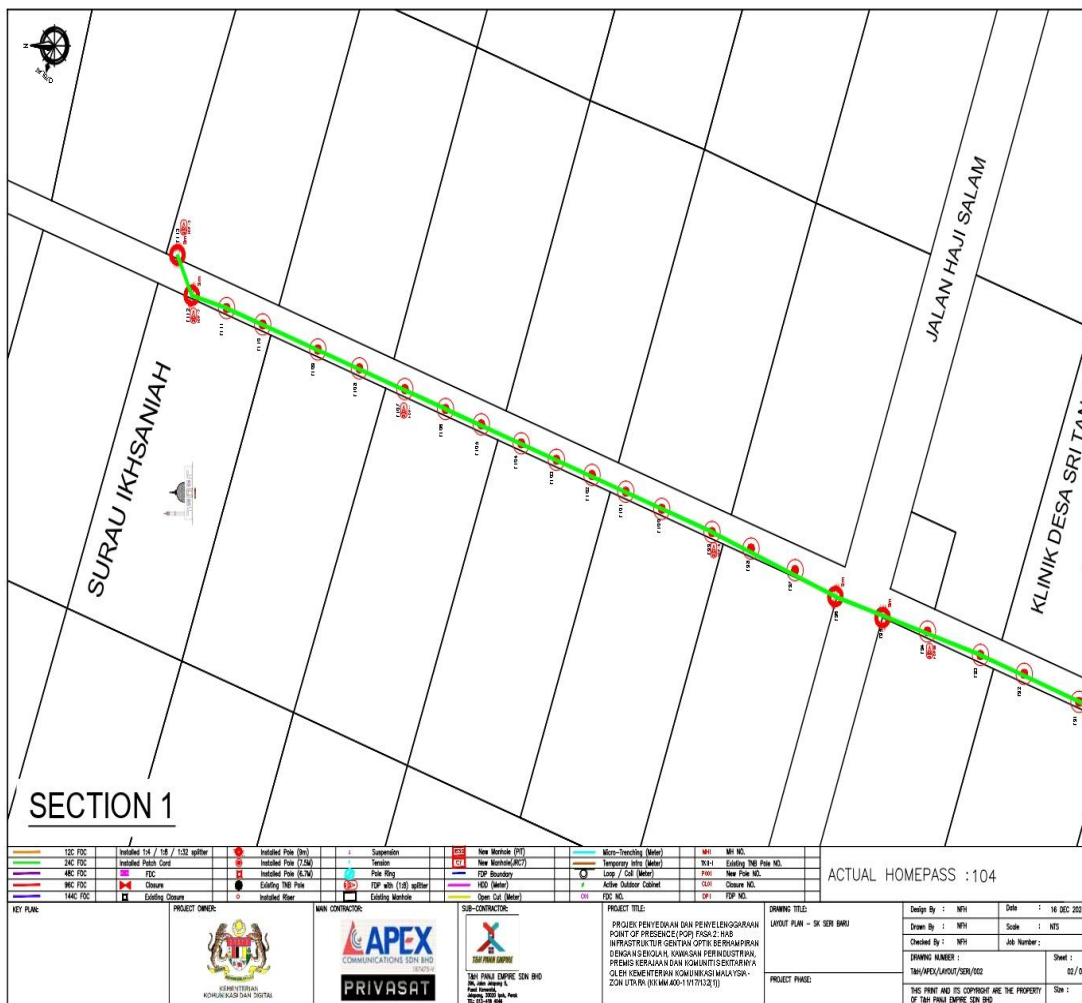




PROJEK PENYEDIAAN DAN PENYELENGGARAAN POINT OF PRESENT (POP) FASA 2: HAB INFRASTRUKTUR GENTIAN OPTIK BERHAMPIRAN DENGAN SEKOLAH, KAWASAN PERINDUSTRIAN, PREMIS KERAJAAN DAN KOMUNITI SEKITARNYA OLEH KEMENTERIAN KOMUNIKASI MALAYSIA - ZON UTARA (KKMM.400-11/17/132(1))



Layout 2

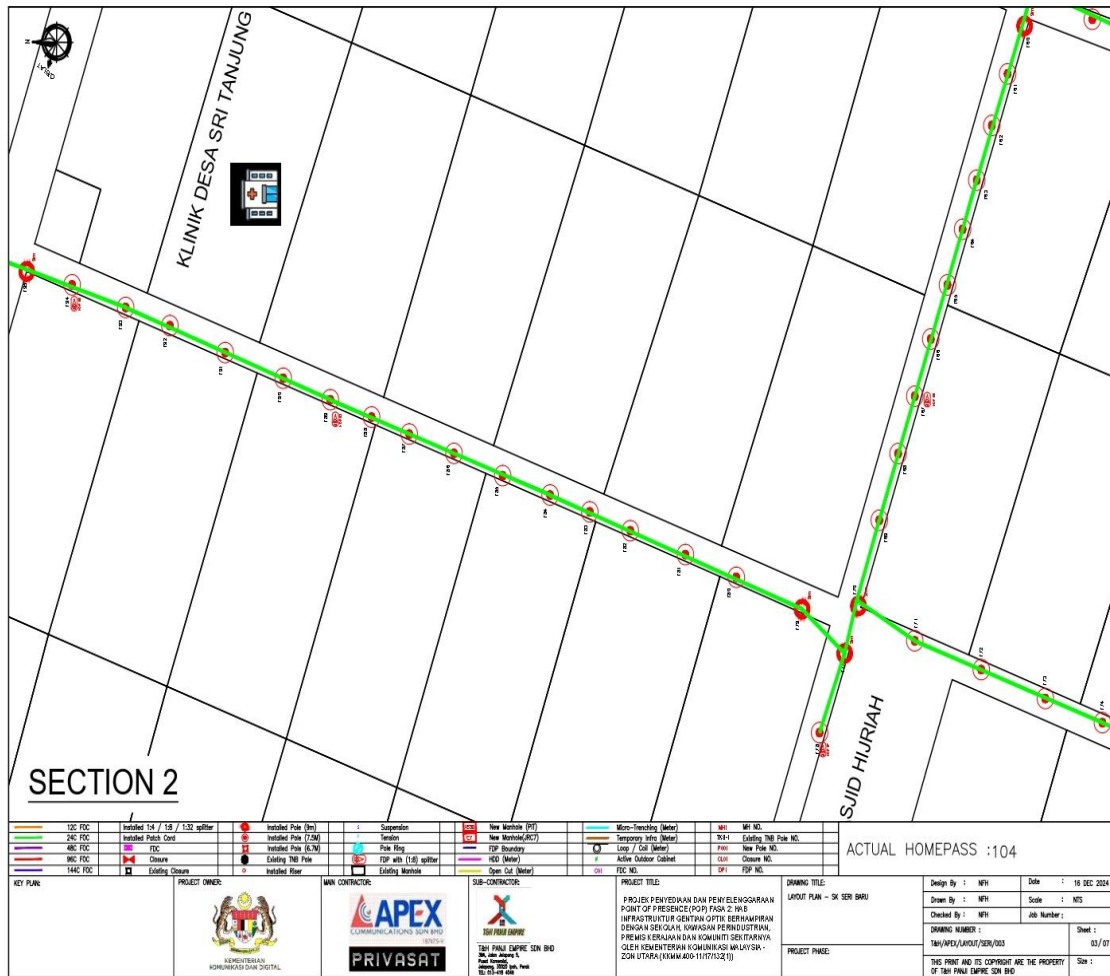




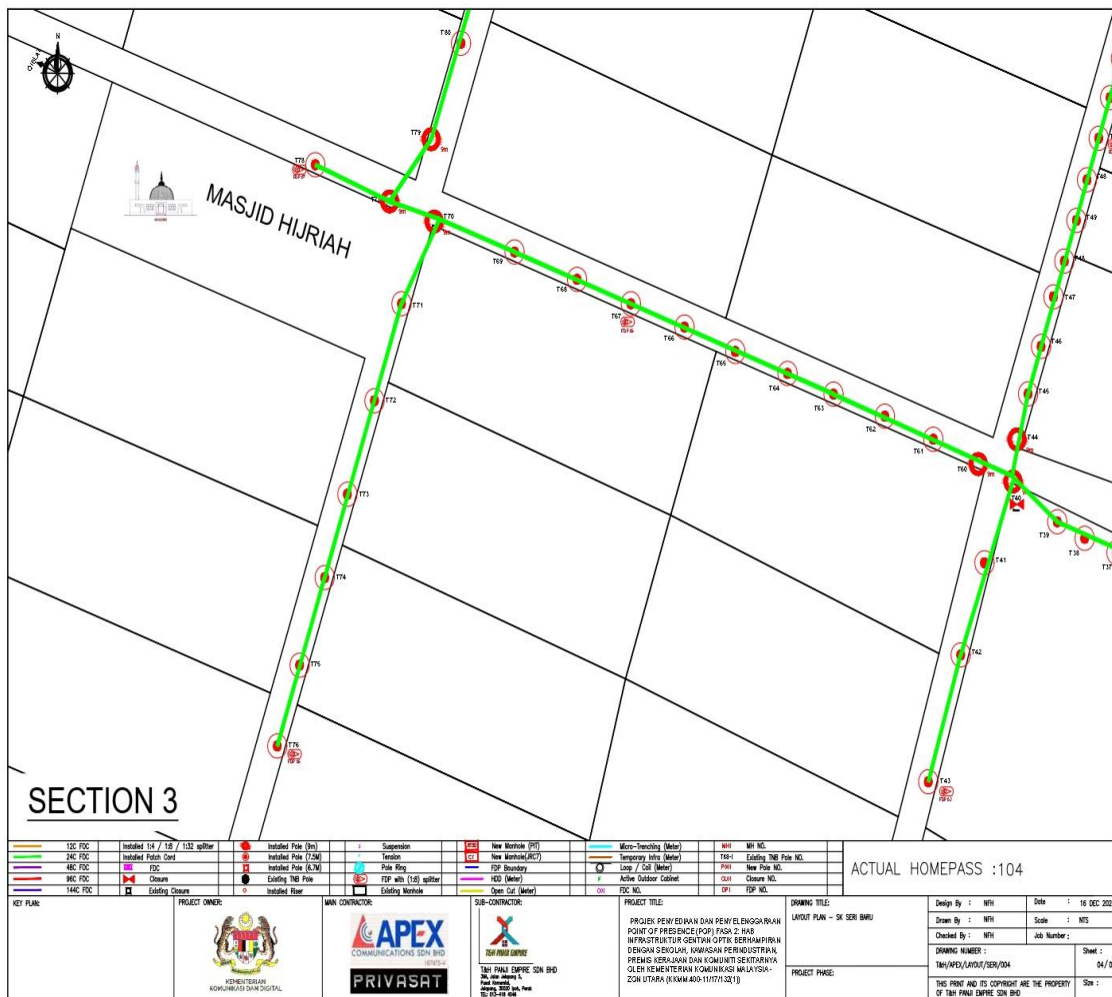
PROJEK PENYEDIAAN DAN PENYELENGGARAAN POINT OF PRESENT (POP) FASA 2: HAB INFRASTRUKTUR GENTIAN OPTIK BERHAMPIRAN DENGAN SEKOLAH, KAWASAN PERINDUSTRIAN, PREMIS KERAJAAN DAN KOMUNITI SEKITARNYA OLEH KEMENTERIAN KOMUNIKASI MALAYSIA - ZON UTARA (KKMM.400-11/17/132(1))



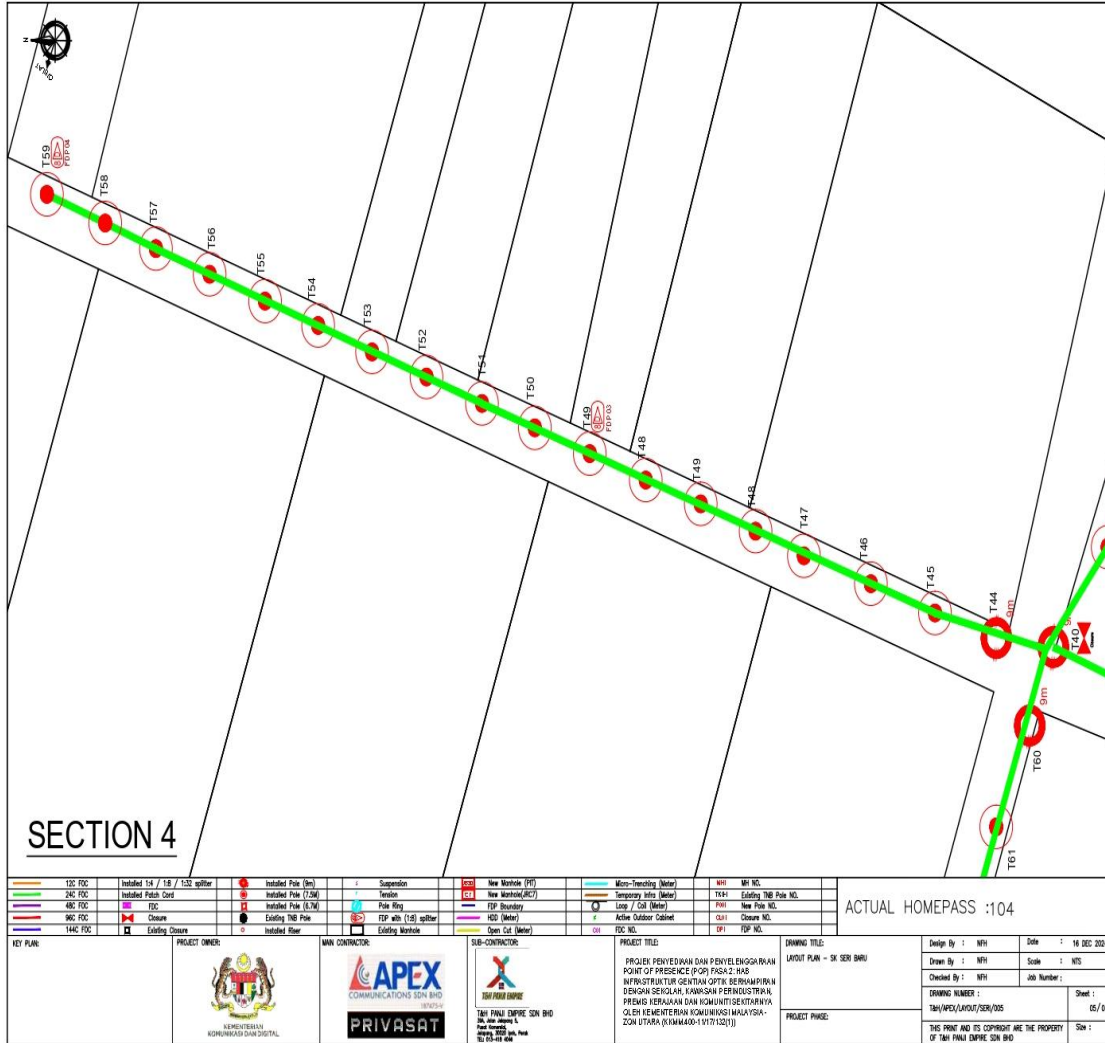
Layout 3



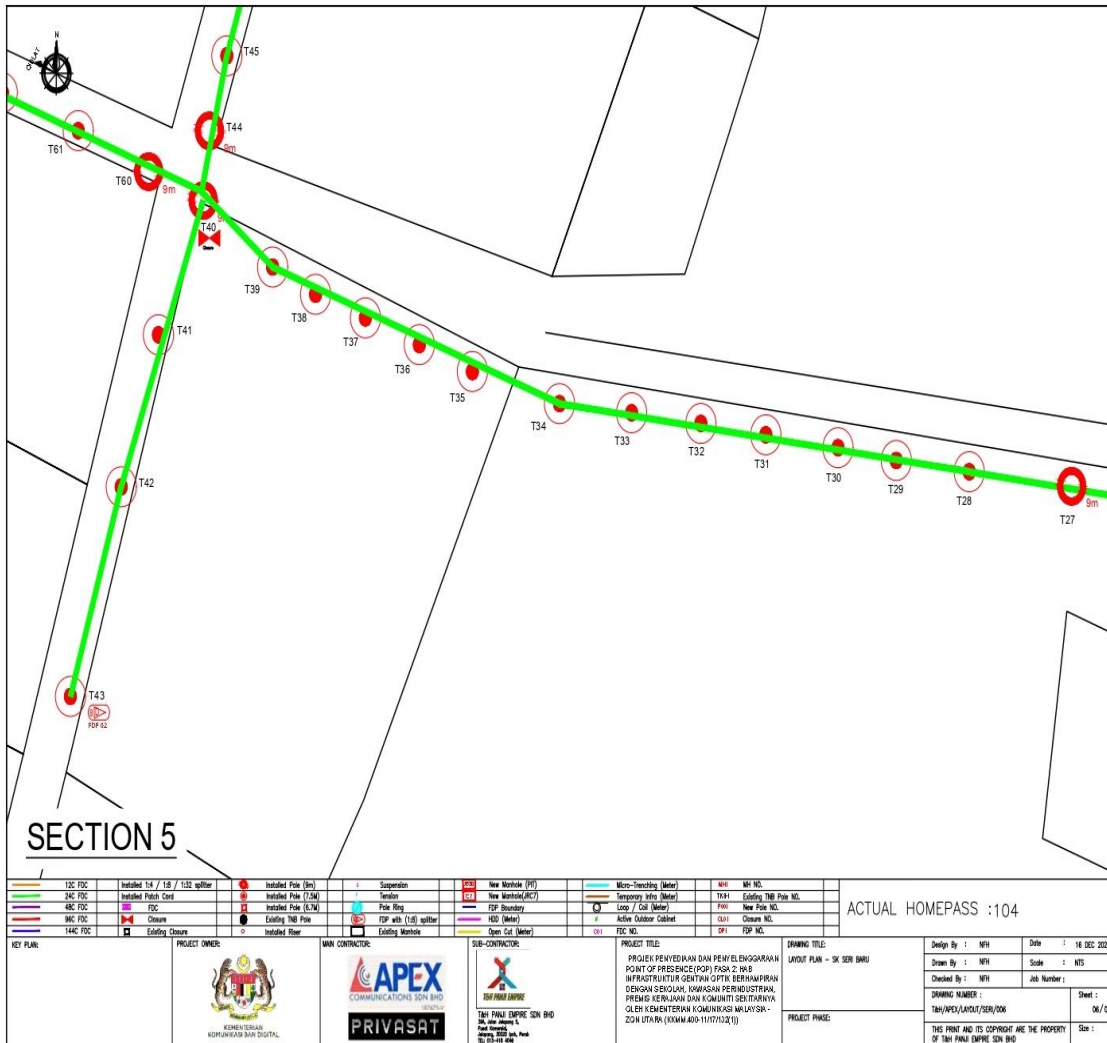
Layout 4



Layout 5



Layout 6



Layout 7

