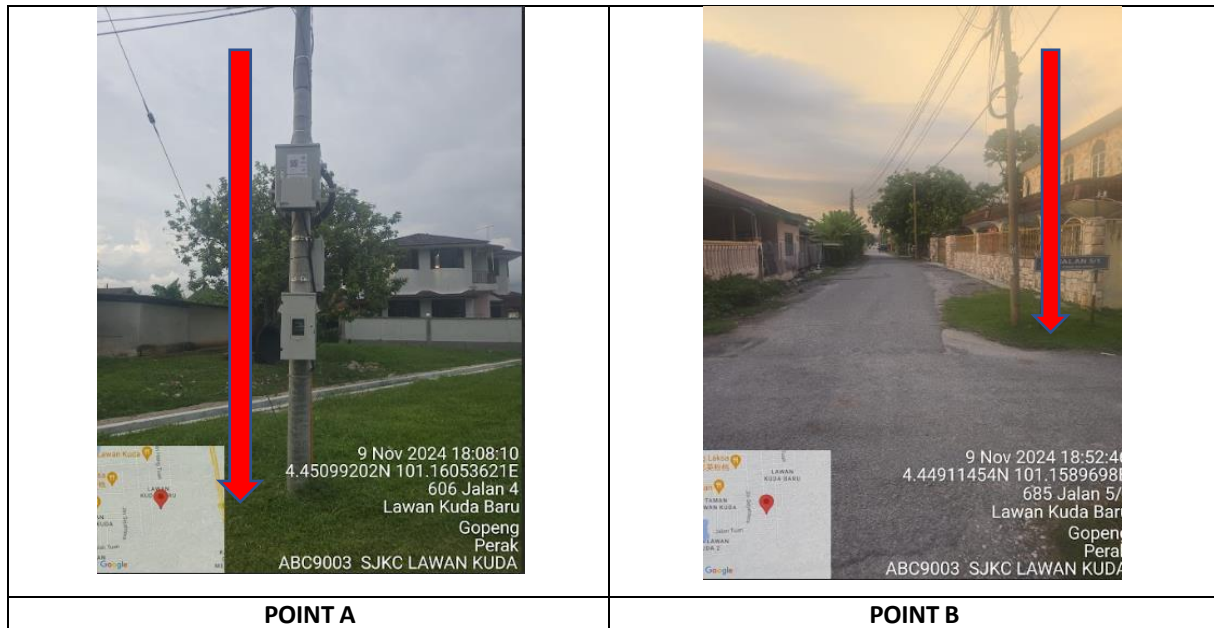


TECHNICAL PROPOSAL

POP2 ABC 9003 SEKOLAH JENIS KEBANGSAAN (C) LAWAN KUDA BARU (D-SIDE)

Company Name :	WCWL Communication Sdn Bhd
Company Address :	No 127 Jalan PUJ 3/3, Taman Puncak Jalil, Bandar Putra Permai 43300 Selangor
Prepared By :	Ramdan
Date :	13 Nov 2024



Starting Point

Site / Boundary Name	: SEKOLAH JENIS KEBANGSAAN (C) LAWAN KUDA BARU
Address	: Jalan 4, Lawan Kuda Baru,
District	: Kampar
Postcode	: 31600
State	: Perak
GPS Coordinate	: 4.450939, 101.161264
LRD	: A

End Point

Site / Boundary Name	: SEKOLAH JENIS KEBANGSAAN (C) LAWAN KUDA BARU
Address	: Di hadapan rumah No 685, Jln Jalan 5, Lawan Kuda Baru
District	: Gopeng, Kampar
Postcode	: 31600
State	: Perak
GPS Coordinate	: 4.450208, 101.161214
LRD	: B

Work Summary

No	Proposed Distance and Method	Unit	Qty
1	Horizontal Directional Drilling (HDD)	m	0
2	Carriage Way Open trench (CW)	m	0
3	Grass Verge Open Trenching (GV)	m	0
4	Micro trenching (MT)	m	0
	Total		0

	Other Information	Unit	Qty
1	Proposed Manhole	EA	0
2	Proposed Pole	EA	58
3	Joint Closure	EA	7
4	Estimated time required for completion	days	50

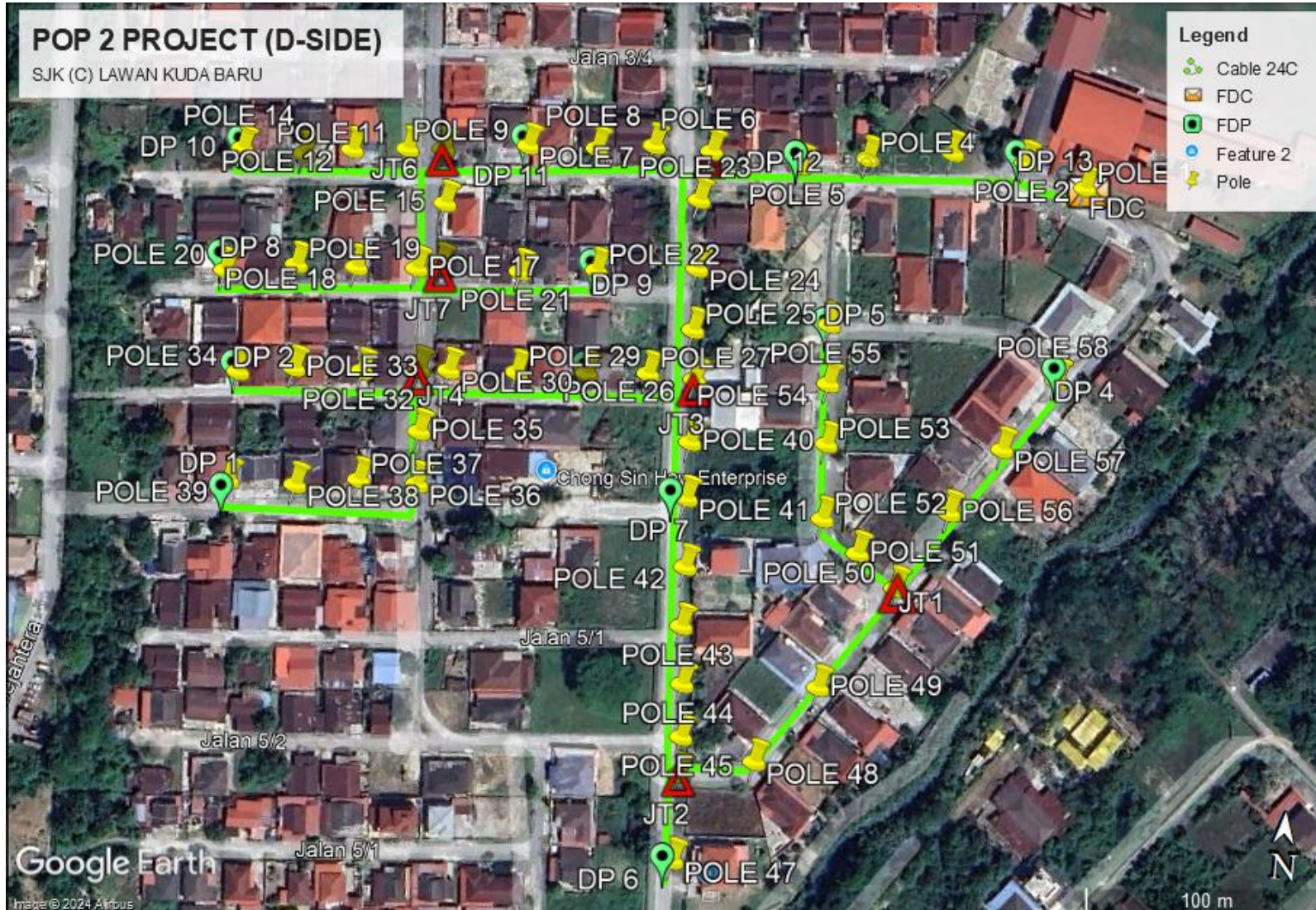
Local Authority Summary

1. Daerah Kampar

Bil	Items	Owner	Quantity	Distance
1	HDD	JKR	-	-
		Majlis	-	-
		Estate / Private Land	-	-
2	New Pole	JKR	-	-
		Majlis	58	2500m
		Estate / Private Land	-	-
3	Existing TNB Pole	JKR	-	-
		Majlis	-	-
		Estate / Private Land	-	-
Total				2500m

Site Plan – KMZ (Overview site area)

Proposed Cable and New Pole



Site Plan – KMZ Routing (All Local Authority)



Route Blue Colour - Majlis Daerah Kampar

Prop New Pole Lat & Long Table

PROPOSED POLE COORDINATE		
POLE NUMBER	LATITUDE	LONGITUDE
T 001	4.450938039	101.161263180
T 002	4.451015247	101.161033783
T 003	4.451027571	101.160757580
T 004	4.450979194	101.160439667
T 005	4.450925613	101.160188455
T 006	4.450951893	101.159853332
T 007	4.450954308	101.159634935
T 008	4.450923213	101.159422409
T 009	4.450911191	101.159164234
T 010	4.450871327	101.158847503
T 011	4.450860868	101.158712693
T 012	4.450839799	101.158506089
T 013	4.450806781	101.158329206
T 014	4.450806600	101.158097362
T 015	4.450668042	101.158872858
T 016	4.450433823	101.158876601
T 017	4.450414405	101.158789594
T 018	4.450399473	101.158565045
T 019	4.450389045	101.158341104
T 020	4.450344335	101.158076135
T 021	4.450436721	101.159177462
T 022	4.450466867	101.159461925
T 023	4.450763260	101.159821228
T 024	4.450506703	101.159836302
T 025	4.450277474	101.159841684
T 026	4.450092601	101.159863700
T 027	4.450099689	101.159688400
T 028	4.450080047	101.159458800
T 029	4.450060136	101.159198284
T 030	4.450044463	101.158945130
T 031	4.450039044	101.158832016
T 032	4.450013901	101.158625155
T 033	4.450002014	101.158369845
T 034	4.449970567	101.158162389
T 035	4.449807783	101.158855997
T 036	4.449612539	101.158866648
T 037	4.449608673	101.158649260
T 038	4.449569947	101.158414857
T 039	4.449565203	101.158164079
T 040	4.449858293	101.159867799
T 041	4.449648751	101.159872047
T 042	4.449393562	101.159890410
T 043	4.449172909	101.159895757
T 044	4.448959400	101.159917732
T 045	4.448764696	101.159930938
T 046	4.448625097	101.159935154
T 047	4.448308351	101.159938134

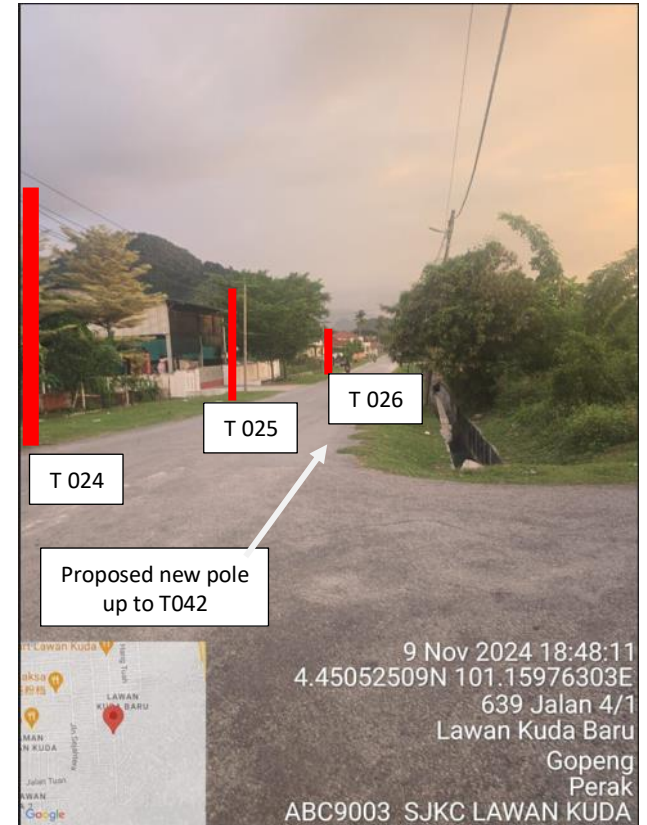
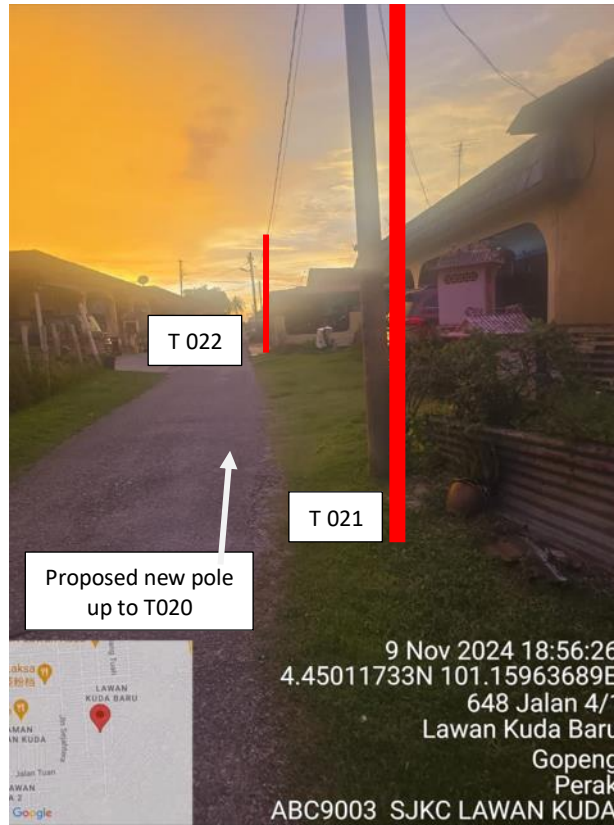
PROPOSED POLE COORDINATE		
POLE NUMBER	LATITUDE	LONGITUDE
T 048	4.448697266	101.160209674
T 049	4.448990876	101.160422276
T 050	4.449381981	101.160678478
T 051	4.449499475	101.160527496
T 052	4.449616037	101.160385166
T 053	4.449895521	101.160376292
T 054	4.450121546	101.160364180
T 055	4.450342954	101.160349339
T 056	4.449680601	101.160855475
T 057	4.449933147	101.161032842
T 058	4.450209152	101.161214866

Overall Manhole & Pole (Propose New & Existing)

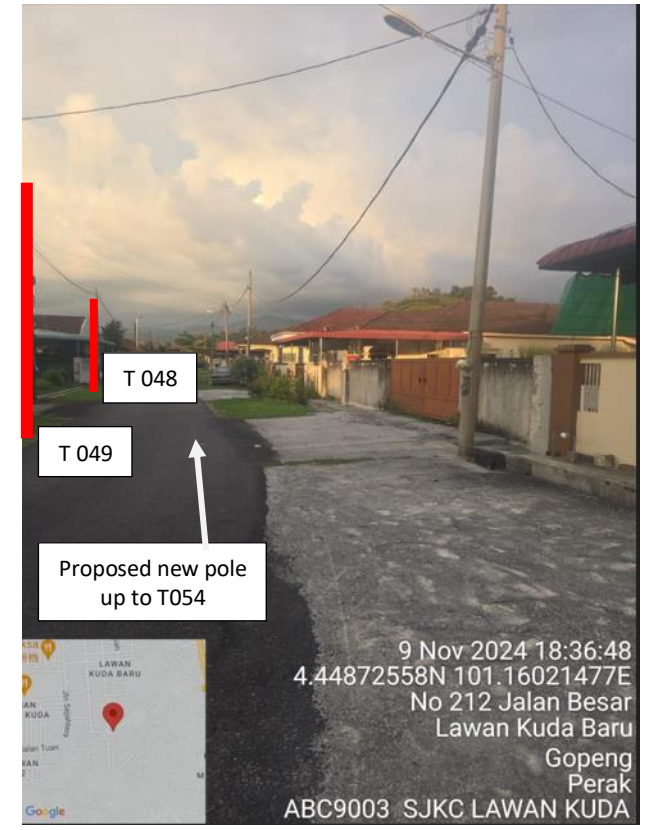
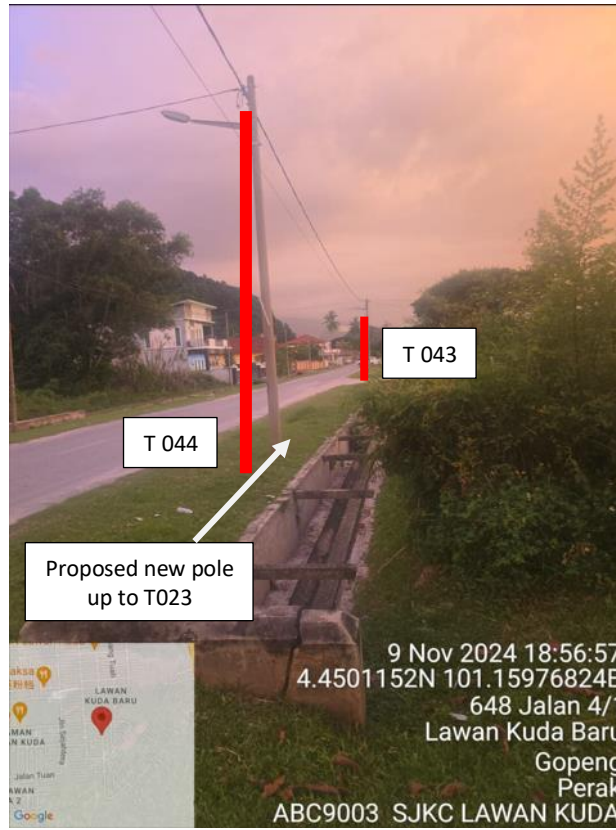
No.	Pole & Manhole ID	Distance	Latitude	Longitude	Local Authority
1	T 001	0	4.450938039	101.161263180	Majlis Daerah Kampar
2	T 002	38	4.451015247	101.161033783	Majlis Daerah Kampar
3	T 003	40	4.451027571	101.160757580	Majlis Daerah Kampar
4	T 004	39	4.450979194	101.160439667	Majlis Daerah Kampar
5	T 005	42	4.450925613	101.160188455	Majlis Daerah Kampar
6	T 006	45	4.450951893	101.159853332	Majlis Daerah Kampar
7	T 007	35	4.450954308	101.159634935	Majlis Daerah Kampar
8	T 008	38	4.450923213	101.159422409	Majlis Daerah Kampar
9	T 009	30	4.450911191	101.159164234	Majlis Daerah Kampar
10	T 010	33	4.450871327	101.158847503	Majlis Daerah Kampar
11	T 011	38	4.450860868	101.158712693	Majlis Daerah Kampar
12	T 012	33	4.450839799	101.158506089	Majlis Daerah Kampar
13	T 013	25	4.450806781	101.158329206	Majlis Daerah Kampar
14	T 014	28	4.450806600	101.158097362	Majlis Daerah Kampar
15	T 015	30	4.450668042	101.158872858	Majlis Daerah Kampar
16	T 016	30	4.450433823	101.158876601	Majlis Daerah Kampar
17	T 017	40	4.450414405	101.158789594	Majlis Daerah Kampar
18	T 018	35	4.450399473	101.158565045	Majlis Daerah Kampar
19	T 019	35	4.450389045	101.158341104	Majlis Daerah Kampar
20	T 020	38	4.450344335	101.158076135	Majlis Daerah Kampar
21	T 021	30	4.450436721	101.159177462	Majlis Daerah Kampar
22	T 022	25	4.450466867	101.159461925	Majlis Daerah Kampar
23	T 023	30	4.450763260	101.159821228	Majlis Daerah Kampar
24	T 024	33	4.450506703	101.159836302	Majlis Daerah Kampar
25	T 025	38	4.450277474	101.159841684	Majlis Daerah Kampar
26	T 026	33	4.450092601	101.159863700	Majlis Daerah Kampar
27	T 027	25	4.450099689	101.159688400	Majlis Daerah Kampar
28	T 028	28	4.450080047	101.159458800	Majlis Daerah Kampar
29	T 029	30	4.450060136	101.159198284	Majlis Daerah Kampar
30	T 030	30	4.450044463	101.158945130	Majlis Daerah Kampar
31	T 031	28	4.450039044	101.158832016	Majlis Daerah Kampar
32	T 032	37	4.450013901	101.158625155	Majlis Daerah Kampar
33	T 033	25	4.450002014	101.158369845	Majlis Daerah Kampar
34	T 034	30	4.449970567	101.158162389	Majlis Daerah Kampar
35	T 035	35	4.449807783	101.158855997	Majlis Daerah Kampar
36	T 036	35	4.449612539	101.158866648	Majlis Daerah Kampar
37	T 037	33	4.449608673	101.158649260	Majlis Daerah Kampar
38	T 038	32	4.449569947	101.158414857	Majlis Daerah Kampar
39	T 039	40	4.449565203	101.158164079	Majlis Daerah Kampar
40	T 040	33	4.449858293	101.159867799	Majlis Daerah Kampar
41	T 041	45	4.449648751	101.159872047	Majlis Daerah Kampar
42	T 042	35	4.449393562	101.159890410	Majlis Daerah Kampar
43	T 043	38	4.449172909	101.159895757	Majlis Daerah Kampar
44	T 044	39	4.448959400	101.159917732	Majlis Daerah Kampar
45	T 045	30	4.448764696	101.159930938	Majlis Daerah Kampar
46	T 046	35	4.448625097	101.159935154	Majlis Daerah Kampar
47	T 047	30	4.448308351	101.159938134	Majlis Daerah Kampar
48	T 048	35	4.448697266	101.160209674	Majlis Daerah Kampar

No.	Pole & Manhole ID	Distance	Latitude	Longitude	Local Authority
49	T 049	28	4.448990876	101.160422276	Majlis Daerah Kampar
50	T 050	37	4.449381981	101.160678478	Majlis Daerah Kampar
51	T 051	25	4.449499475	101.160527496	Majlis Daerah Kampar
52	T 052	30	4.449616037	101.160385166	Majlis Daerah Kampar
53	T 053	35	4.449895521	101.160376292	Majlis Daerah Kampar
54	T 054	35	4.450121546	101.160364180	Majlis Daerah Kampar
55	T 055	28	4.450342954	101.160349339	Majlis Daerah Kampar
56	T 056	37	4.449680601	101.160855475	Majlis Daerah Kampar
57	T 057	25	4.449933147	101.161032842	Majlis Daerah Kampar
58	T 058	30	4.450209152	101.161214866	Majlis Daerah Kampar

Site Photos – Proposed Pole 7.5m



Site Photos – Proposed Pole 7.5m





<table border="1"> <tr><td>12C FOC</td><td>Installed 1:4 / 1:8 / 1:32 splitter</td><td>Installed Pole (9m)</td><td>Suspension</td><td>New Manhole (PIT)</td><td>Micro-Trenching (Meter)</td><td>MHT</td><td>MH NO.</td></tr> <tr><td>24C FOC</td><td>Installed Patch Cord</td><td>Installed Pole (7.5M)</td><td>Tension</td><td>New Manhole(JRC7)</td><td>Temporary Infra (Meter)</td><td>TNS-T</td><td>Existing TNB Pole NO.</td></tr> <tr><td>48C FOC</td><td>FDC</td><td>Installed Pole (6.7M)</td><td>Pole Ring</td><td>FDP Boundary</td><td>Loop / Coil (Meter)</td><td>NSMT</td><td>New Pole NO.</td></tr> <tr><td>96C FOC</td><td>Closure</td><td>Existing TNB Pole</td><td>FDP with (1:8) splitter</td><td>HDD (Meter)</td><td>Active Outdoor Cabinet</td><td>CLMT</td><td>Closure NO.</td></tr> <tr><td>144C FOC</td><td>Existing Closure</td><td>Installed Riser</td><td>Existing Manhole</td><td>Open Cut (Meter)</td><td>FDC NO.</td><td>DPT</td><td>FDP NO.</td></tr> </table>	12C FOC	Installed 1:4 / 1:8 / 1:32 splitter	Installed Pole (9m)	Suspension	New Manhole (PIT)	Micro-Trenching (Meter)	MHT	MH NO.	24C FOC	Installed Patch Cord	Installed Pole (7.5M)	Tension	New Manhole(JRC7)	Temporary Infra (Meter)	TNS-T	Existing TNB Pole NO.	48C FOC	FDC	Installed Pole (6.7M)	Pole Ring	FDP Boundary	Loop / Coil (Meter)	NSMT	New Pole NO.	96C FOC	Closure	Existing TNB Pole	FDP with (1:8) splitter	HDD (Meter)	Active Outdoor Cabinet	CLMT	Closure NO.	144C FOC	Existing Closure	Installed Riser	Existing Manhole	Open Cut (Meter)	FDC NO.	DPT	FDP NO.	<p>PROJECT OWNER:</p> <p>APEX APEX COMMUNICATION SDN BHD 12th Floor, Menara Hap Seng, 50250 Jalan P. Ramlee, Kuala Lumpur, MALAYSIA Phone: +603 - 2148 8810 Fax: +603 - 2142 6003 / 2148 0966 Email: corporate@apex.com.my</p>	<p>MAIN CONTRACTOR:</p> <p>WCWL WCWL COMMUNICATION SDN BHD 127, Jalan PUJ 3/3, Taman Puncak Jalil Bandar Putra Permai, 43300 Seri Kembangan, Selangor Phone: +603 5888 5983 Email: info@wowlcommunications.com.my</p>	<p>SUB-CONTRACTOR:</p>	<p>PROJECT TITLE:</p> <p>CONTRACTOR FOR SURVEY, TECHNICAL PROPOSAL AND WAYLEAVE & PERMIT APPROVAL - POP2 PROJECT</p>	<p>DRAWING TITLE:</p> <p>ASBUILD SITE PLAN DRAWING</p> <p>ABC9003 SEKOLAH KEBANGSAAN JENIS (C) LAWAN KUDA</p> <p>PROJECT PHASE:</p> <p>POP 2</p>	<p>Design By : (Contractor) Date : 16-11-2024</p> <p>Drawn By : (Contractor) Scale :</p> <p>Checked By : Job Number :</p> <p>DRAWING NUMBER : ABC9003-CD-01 Sheet : 1 / 1</p> <p>THIS PRINT AND ITS COPYRIGHT ARE THE PROPERTY OF Size : A3</p>
12C FOC	Installed 1:4 / 1:8 / 1:32 splitter	Installed Pole (9m)	Suspension	New Manhole (PIT)	Micro-Trenching (Meter)	MHT	MH NO.																																							
24C FOC	Installed Patch Cord	Installed Pole (7.5M)	Tension	New Manhole(JRC7)	Temporary Infra (Meter)	TNS-T	Existing TNB Pole NO.																																							
48C FOC	FDC	Installed Pole (6.7M)	Pole Ring	FDP Boundary	Loop / Coil (Meter)	NSMT	New Pole NO.																																							
96C FOC	Closure	Existing TNB Pole	FDP with (1:8) splitter	HDD (Meter)	Active Outdoor Cabinet	CLMT	Closure NO.																																							
144C FOC	Existing Closure	Installed Riser	Existing Manhole	Open Cut (Meter)	FDC NO.	DPT	FDP NO.																																							

ACTUAL HOMEPASS :