

## TECHNICAL PROPOSAL

### POP2 ABA7006 SEKOLAH KEBANGSAAN KLIAN INTAN (D-SIDE)

**Company Name** : WabTech Sdn Bhd  
**Company Address** : 101-1, Jalan Metro Sendayan, 71950 Seremban, Negeri Sembilan.  
**Prepared By** : Sharifful Bahrin bin Che Meh  
**Date** : 19/2/2025



**Point A**



**Point B**

#### Starting Point

**Site / Boundary Name** : Sekolah Kebangsaan Kelian Intan  
**Address** : Jalan Besar, 33200 Kelian Intan, Pengkalan Hulu, Perak  
**District** : Pengkalan Hulu  
**Postcode** : 33200  
**State** : Perak  
**GPS Coordinate** : 5.635037, 101.024574  
**LRD** : A

#### End Point

**Site / Boundary Name** : Kelian Intan  
**Address** : Jalan Khek 2, 33200 Pengkalan Hulu, Perak  
**District** : Pengkalan Hulu  
**Postcode** : 33200  
**State** : Perak  
**GPS Coordinate** : 5.636998, 101.023461  
**LRD** : B



PROJEK PENYEDIAAN DAN PENYELENGGARAAN POINT OF PRESENCE (POP)  
FASA 2: HAB INFRASTRUTUK GENTIAN OPTIK BERHAMPIRAN DENGAN  
SEKOLAH, KAWASAN PERINDUSTRIAN, PREMIS KERAJAAN DAN KOMUNITI  
SEKITARNYA OLEH KEMENTERIAN KOMUNIKASI MALAYSIA – ZON UTARA  
(KKMM.400-11/17/132(1))



WRBTECH SDN BHD  
ESTABLISHED 2011

## 1.0 WORK SUMMARY

NO	PROPOSED DISTANCE AND METHOD	UNIT	QUANTITY
1	Horizontal Directional Drilling (HDD)	m	0
2	Carriage Way Open Trench (CW)	m	0
3	Grass Verge Open Trenching (GV)	m	0
4	Micro Trenching (MT)	m	0
Total			

NO	OTHER INFORMATION	UNIT	QUANTITY
1	Installation of Short Span ADSS Fibre Cables	m	1909
2	Install New Pole	ea	42
3	Install New JRC7 Manhole	ea	0
4	Install GI Riser 100mm	ea	0
5	Install Fiber Distribution Point and Closure (Splicing, Termination and Testing)	ea	18
6	Estimated Time Required for Completion	days	30



PROJEK PENYEDIAAN DAN PENYELENGGARAAN POINT OF PRESENCE (POP)  
FASA 2: HAB INFRASTRUTUK GENTIAN OPTIK BERHAMPIRAN DENGAN  
SEKOLAH, KAWASAN PERINDUSTRIAN, PREMIS KERAJAAN DAN KOMUNITI  
SEKITARNYA OLEH KEMENTERIAN KOMUNIKASI MALAYSIA – ZON UTARA  
(KKMM.400-11/17/132(1))



WABTECH SDN BHD  
ESTABLISHED 2014

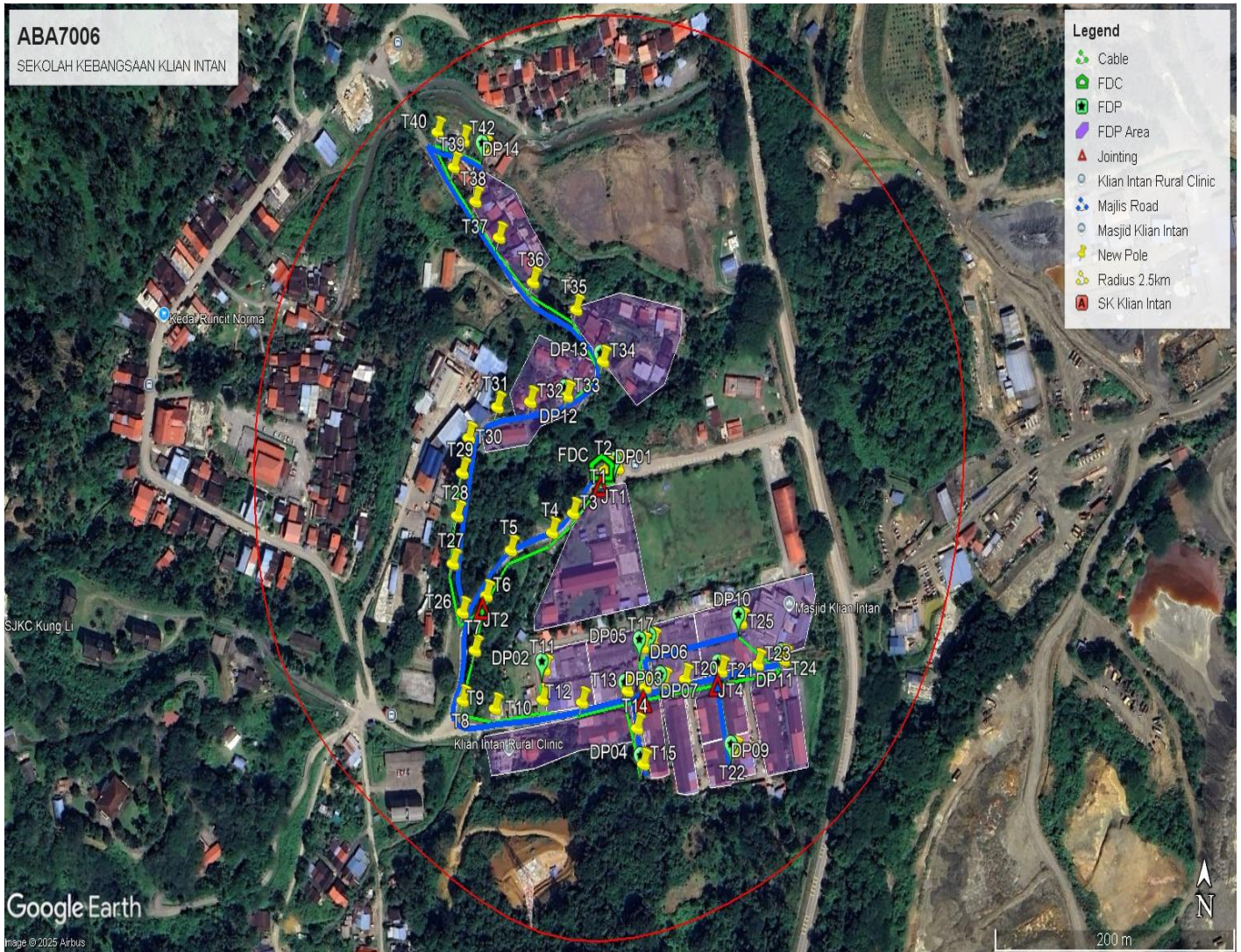
## 2.0 LOCAL AUTHORITY SUMMARY

Daerah Pengkalan Hulu

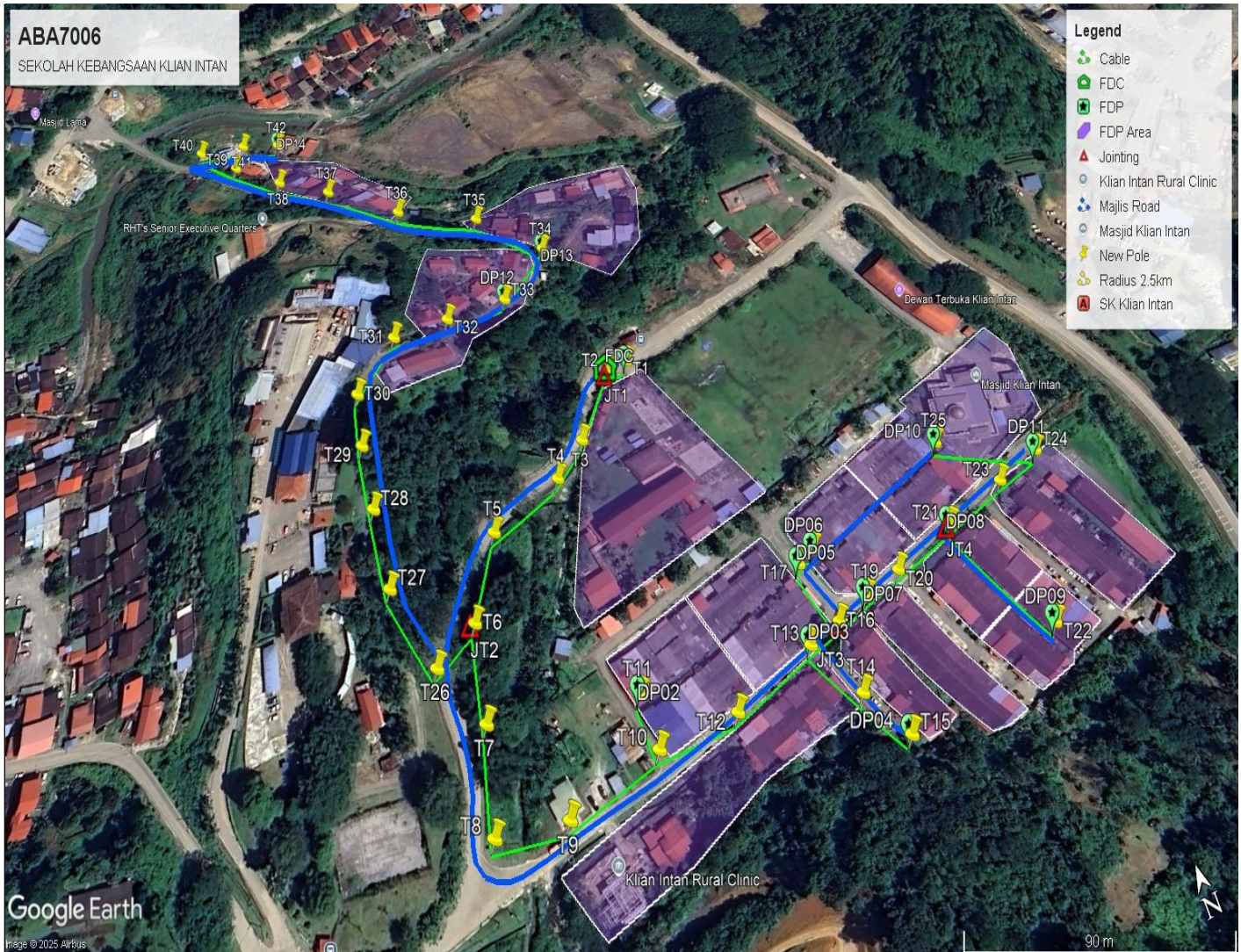
NO	ITEMS	Owner	Quantity	Distance (m)
1	HDD	JKR	-	-
		Majlis	-	-
		PDT	-	-
2	New Pole	JKR	-	-
		Majlis	42	1275
		PDT	-	-
<b>Total Distance (m)</b>				<b>1275</b>

### 3.0 SITE PLAN (KMZ)

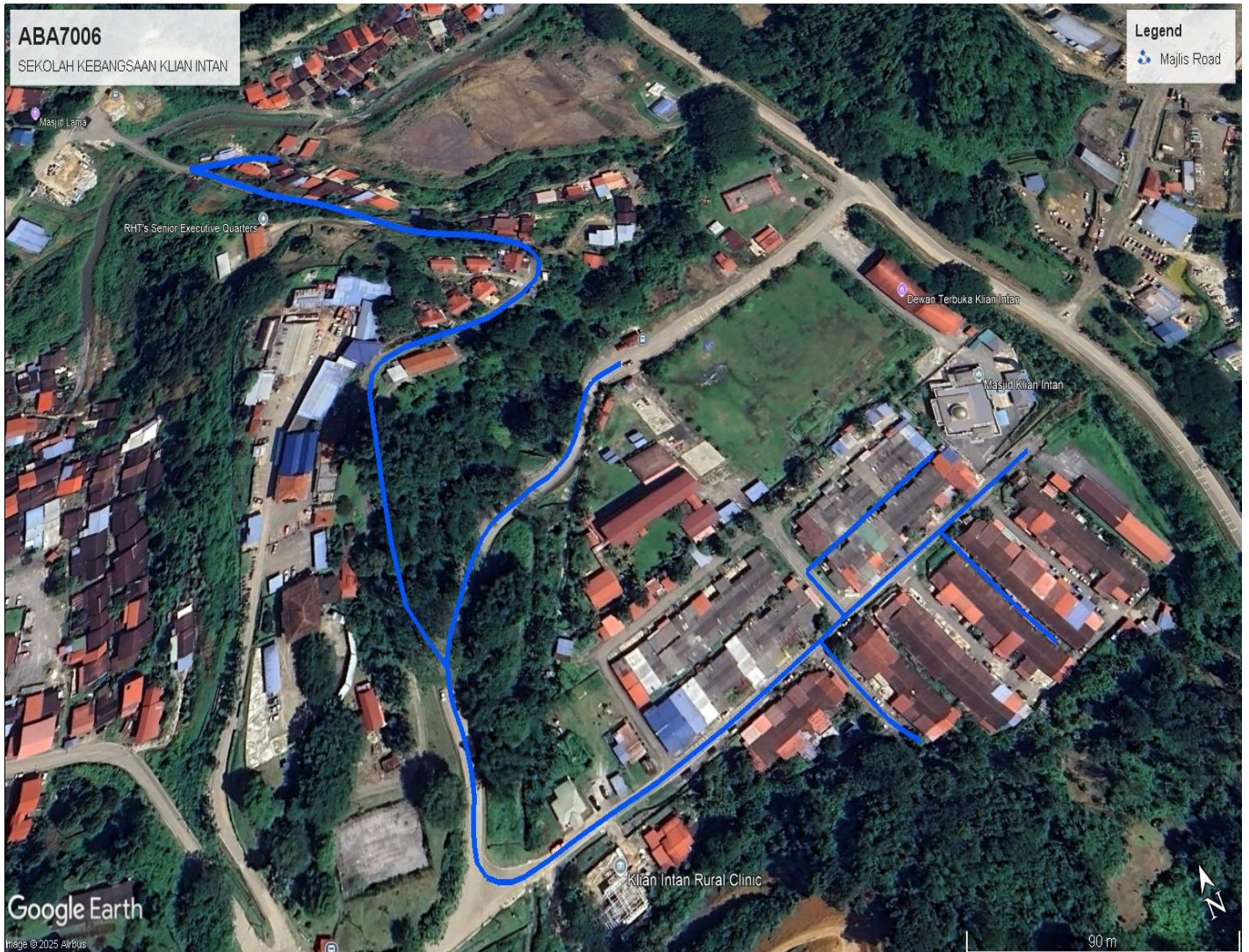
#### 3.1 Overview Site Area



### 3.2 Site boundary



### 3.3 Road Boundary



#### 4.0 PROPOSED NEW POLE

Proposed New Pole Coordinate					
No.	Pole Number	Distance (m)	Latitude	Longitude	Local Authority
1	FDC POLE	11	5.635020	101.024474	Majlis Daerah Pengkalan Hulu
2	T001	11	5.635037	101.024574	Majlis Daerah Pengkalan Hulu
3	T002	11	5.635020	101.024474	Majlis Daerah Pengkalan Hulu
4	T003	41	5.634750	101.024226	Majlis Daerah Pengkalan Hulu
5	T004	21	5.634628	101.024063	Majlis Daerah Pengkalan Hulu
6	T005	38	5.634514	101.023742	Majlis Daerah Pengkalan Hulu
7	T006	36	5.634231	101.023556	Majlis Daerah Pengkalan Hulu
8	T007	39	5.633893	101.023474	Majlis Daerah Pengkalan Hulu
9	T008	36	5.633579	101.023380	Majlis Daerah Pengkalan Hulu
10	T009	30	5.633531	101.023635	Majlis Daerah Pengkalan Hulu
11	T010	41	5.633593	101.024008	Majlis Daerah Pengkalan Hulu
12	T011	21	5.633779	101.024020	Majlis Daerah Pengkalan Hulu
13	T012	36	5.633581	101.024322	Majlis Daerah Pengkalan Hulu
14	T013	42	5.633660	101.024681	Majlis Daerah Pengkalan Hulu
15	T014	26	5.633433	101.024760	Majlis Daerah Pengkalan Hulu
16	T015	23	5.633225	101.024814	Majlis Daerah Pengkalan Hulu
17	T016	16	5.633685	101.024822	Majlis Daerah Pengkalan Hulu
18	T017	28	5.633933	101.024796	Majlis Daerah Pengkalan Hulu
19	T018	10	5.633961	101.024875	Majlis Daerah Pengkalan Hulu
20	T019	16	5.633716	101.024968	Majlis Daerah Pengkalan Hulu
21	T020	19	5.633744	101.025135	Majlis Daerah Pengkalan Hulu
22	T021	32	5.633799	101.025422	Majlis Daerah Pengkalan Hulu
23	T022	56	5.633309	101.025530	Majlis Daerah Pengkalan Hulu
24	T023	32	5.633849	101.025708	Majlis Daerah Pengkalan Hulu
25	T024	23	5.633883	101.025913	Majlis Daerah Pengkalan Hulu
26	T025	46	5.634103	101.025571	Majlis Daerah Pengkalan Hulu
27	T026	23	5.634125	101.023374	Majlis Daerah Pengkalan Hulu
28	T027	34	5.634426	101.023300	Majlis Daerah Pengkalan Hulu
29	T028	32	5.634719	101.023331	Majlis Daerah Pengkalan Hulu
30	T029	29	5.634981	101.023365	Majlis Daerah Pengkalan Hulu
31	T030	25	5.635193	101.023412	Majlis Daerah Pengkalan Hulu
32	T031	32	5.635385	101.023630	Majlis Daerah Pengkalan Hulu
33	T032	29	5.635425	101.023880	Majlis Daerah Pengkalan Hulu
34	T033	32	5.635469	101.024164	Majlis Daerah Pengkalan Hulu
35	T034	40	5.635694	101.024441	Majlis Daerah Pengkalan Hulu
36	T035	44	5.636010	101.024221	Majlis Daerah Pengkalan Hulu
37	T036	43	5.636166	101.023879	Majlis Daerah Pengkalan Hulu
38	T037	44	5.636437	101.023604	Majlis Daerah Pengkalan Hulu



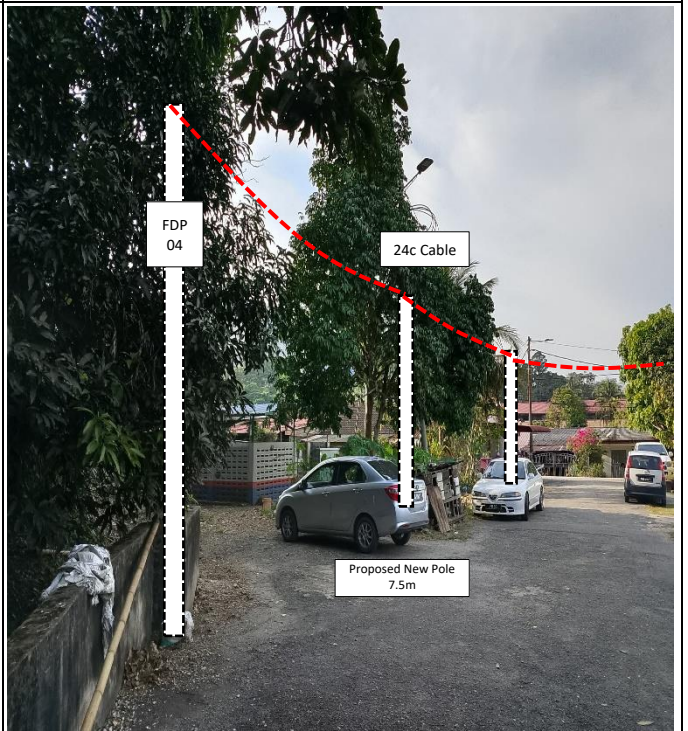
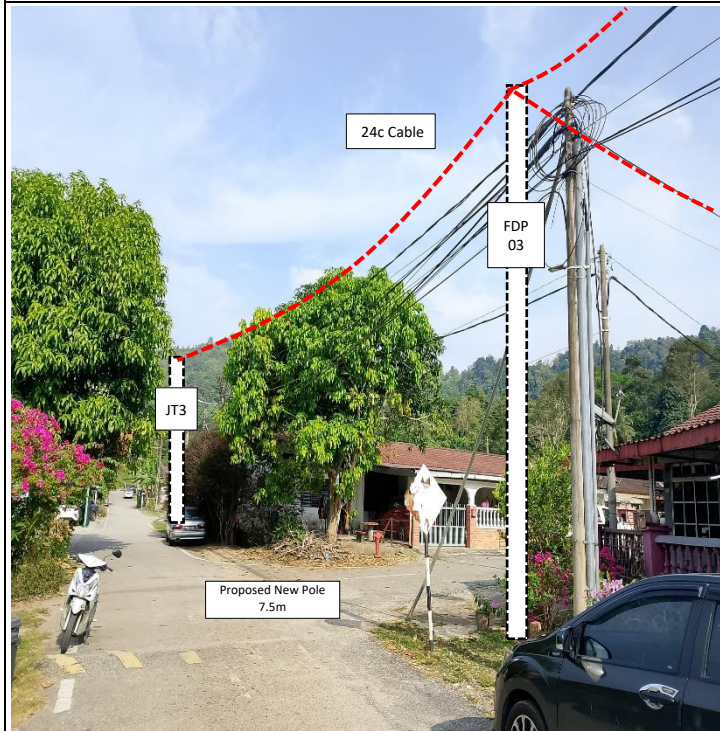
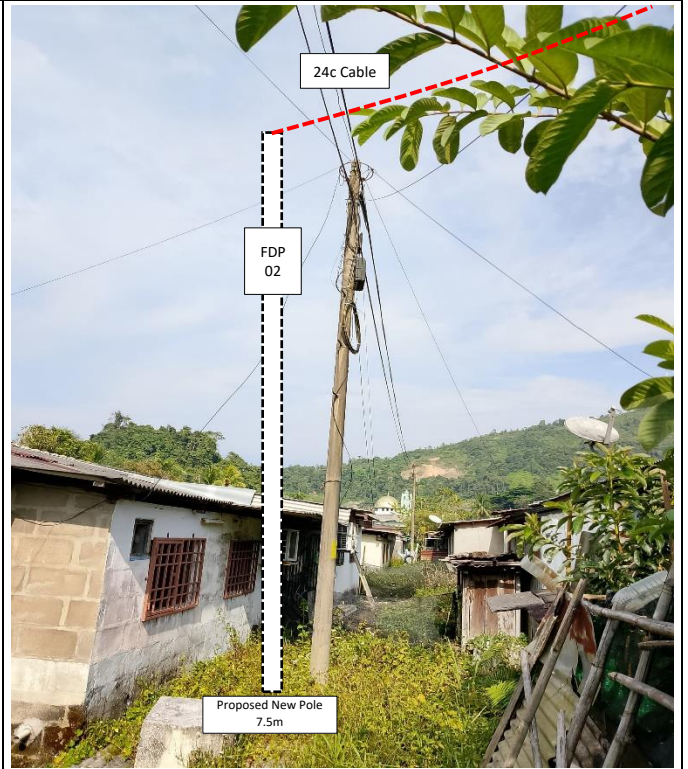
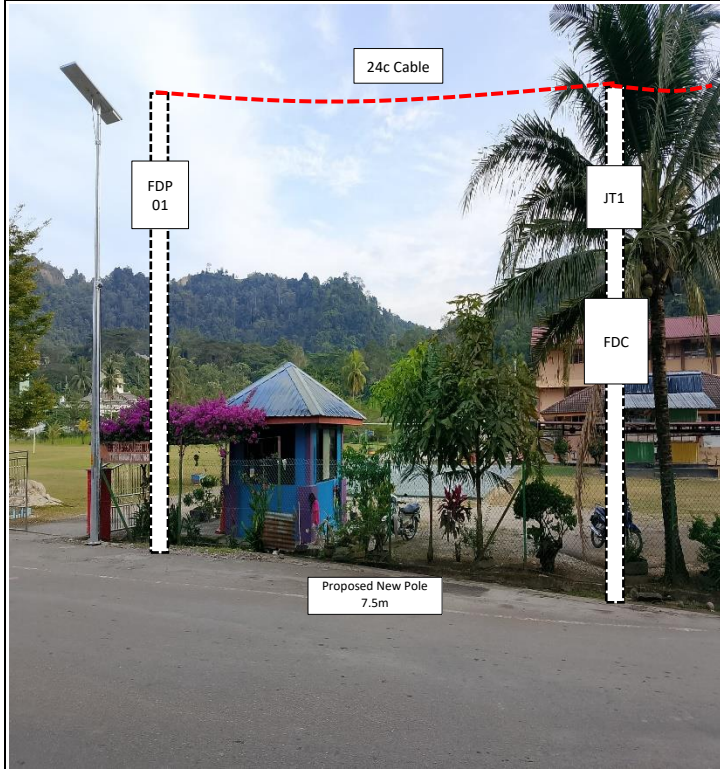
PROJEK PENYEDIAAN DAN PENYELENGGARAAN POINT OF PRESENCE (POP)  
FASA 2: HAB INFRASTRUTUK GENTIAN OPTIK BERHAMPIRAN DENGAN  
SEKOLAH, KAWASAN PERINDUSTRIAN, PREMIS KERAJAAN DAN KOMUNITI  
SEKITARNYA OLEH KEMENTERIAN KOMUNIKASI MALAYSIA – ZON UTARA  
(KKMM.400-11/17/132(1))

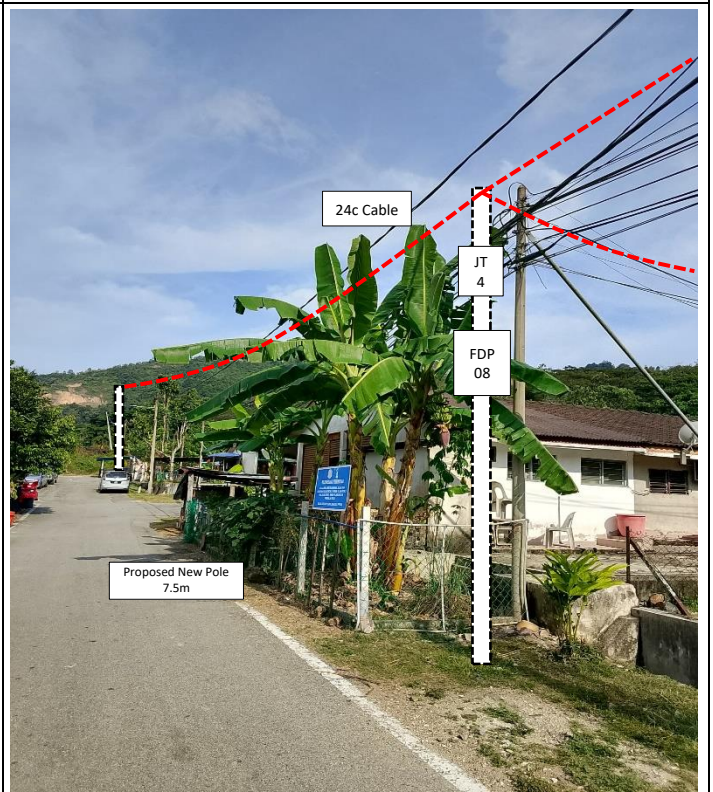
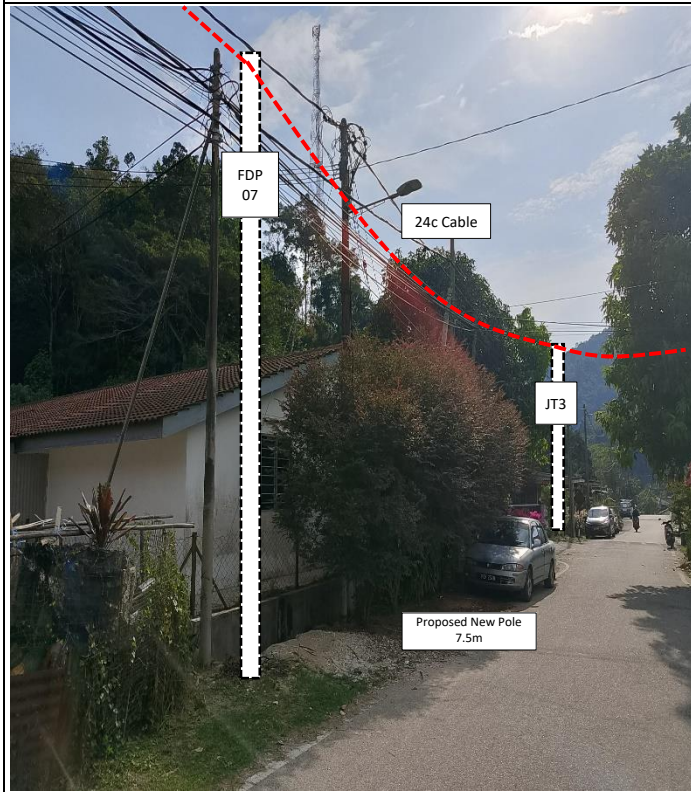
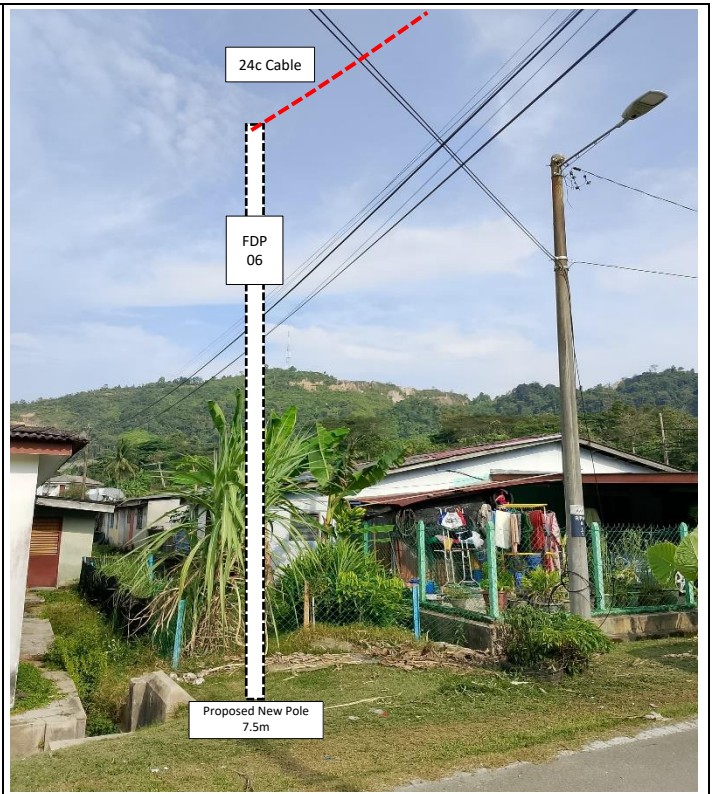
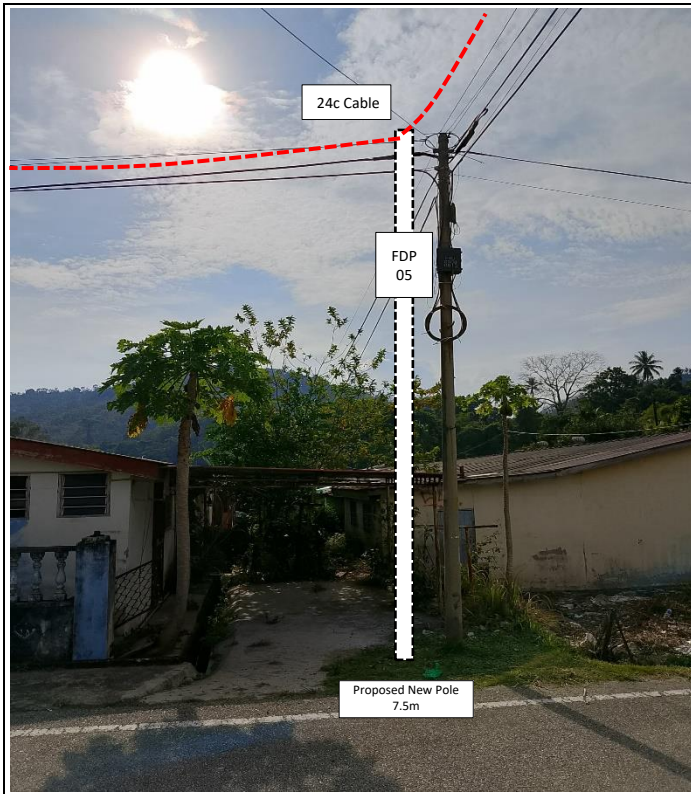


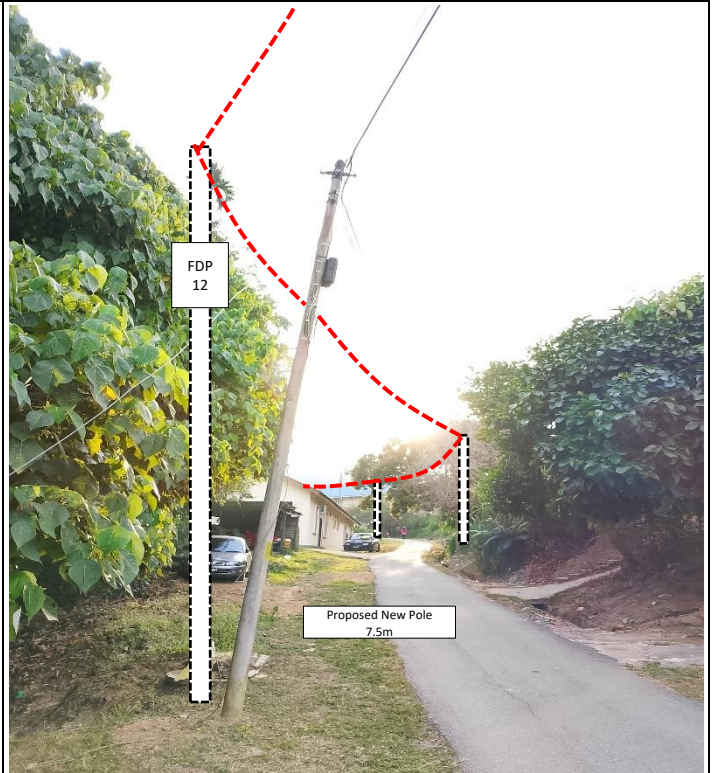
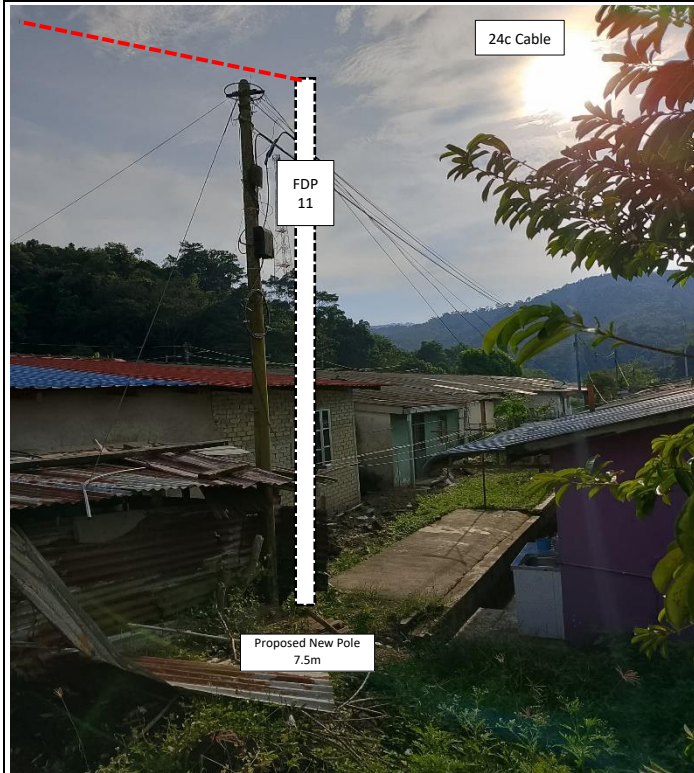
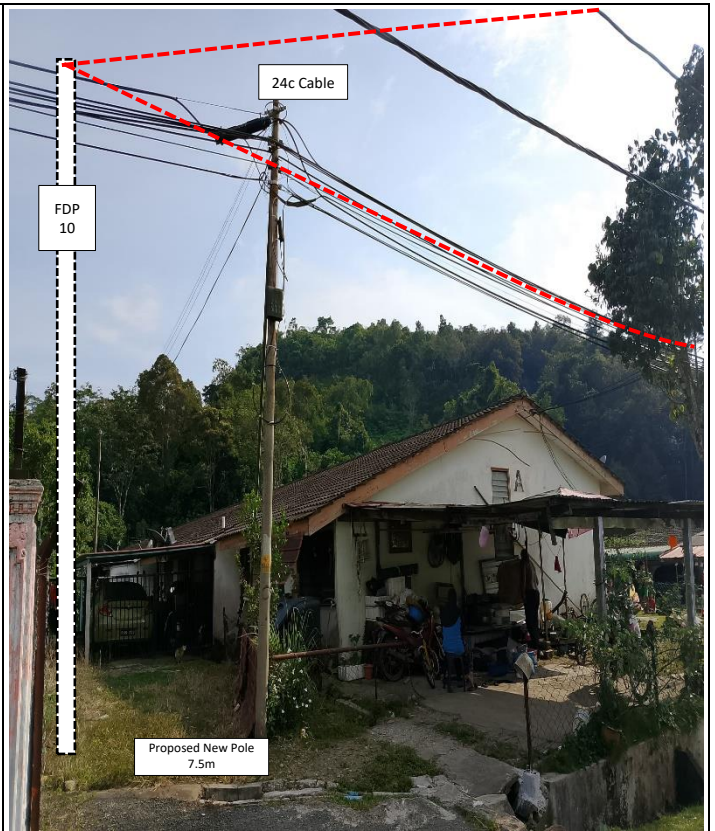
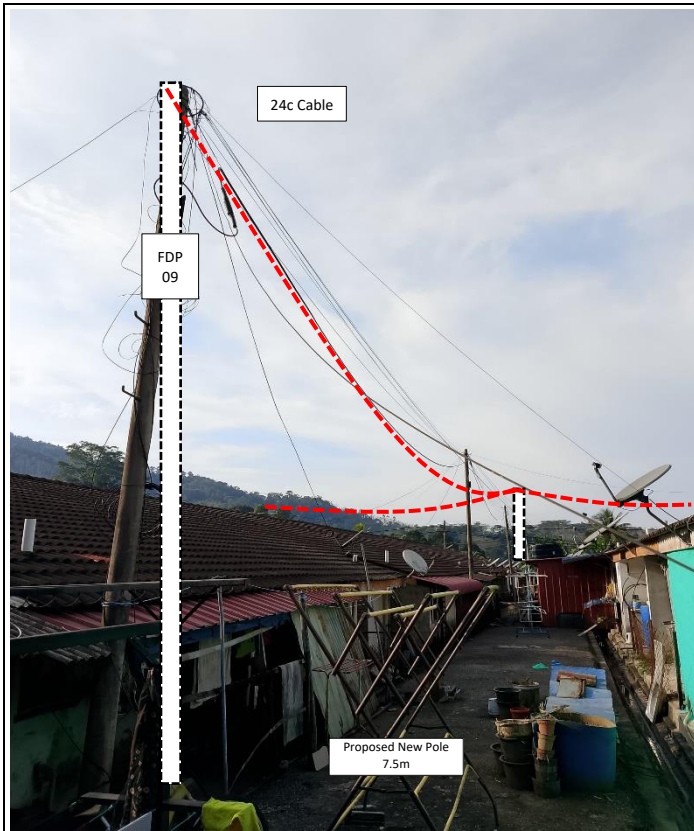
WABTECH SDN BHD  
1398887-X

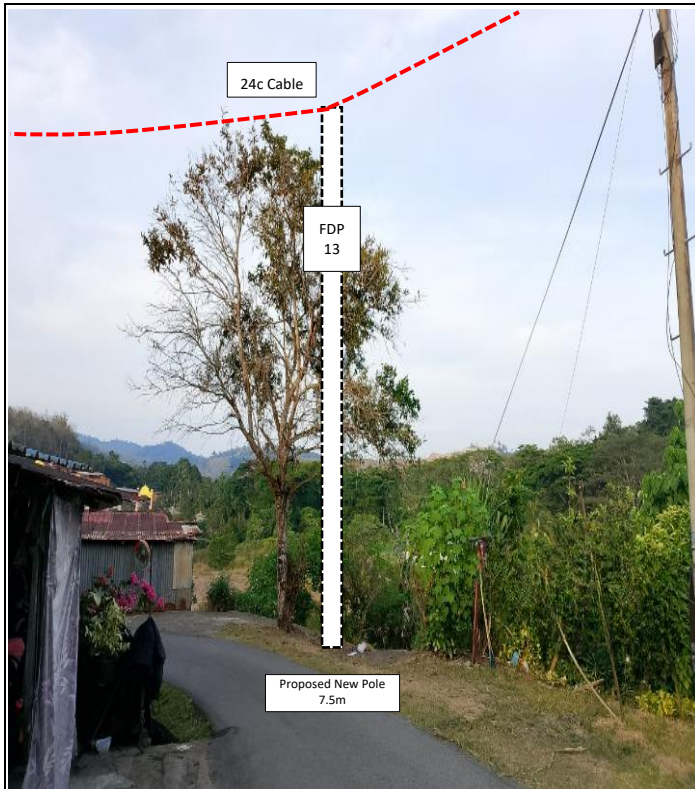
39	T038	33	5.636665	101.023405	Majlis Daerah Pengkalan Hulu
40	T039	31	5.636878	101.023226	Majlis Daerah Pengkalan Hulu
41	T040	29	5.637101	101.023085	Majlis Daerah Pengkalan Hulu
42	T041	24	5.637052	101.023294	Majlis Daerah Pengkalan Hulu
43	T042	20	5.636998	101.023461	Majlis Daerah Pengkalan Hulu

**5.0 SITE PHOTOS - PROPOSED NEW POLE**











PROJEK PENYEDIAAN DAN PENYELENGGARAAN POINT OF PRESENCE (POP)  
FASA 2: HAB INFRASTRUTUK GENTIAN OPTIK BERHAMPIRAN DENGAN  
SEKOLAH, KAWASAN PERINDUSTRIAN, PREMIS KERAJAAN DAN KOMUNITI  
SEKITARNYA OLEH KEMENTERIAN KOMUNIKASI MALAYSIA – ZON UTARA  
(KKMM.400-11/17/132(1))



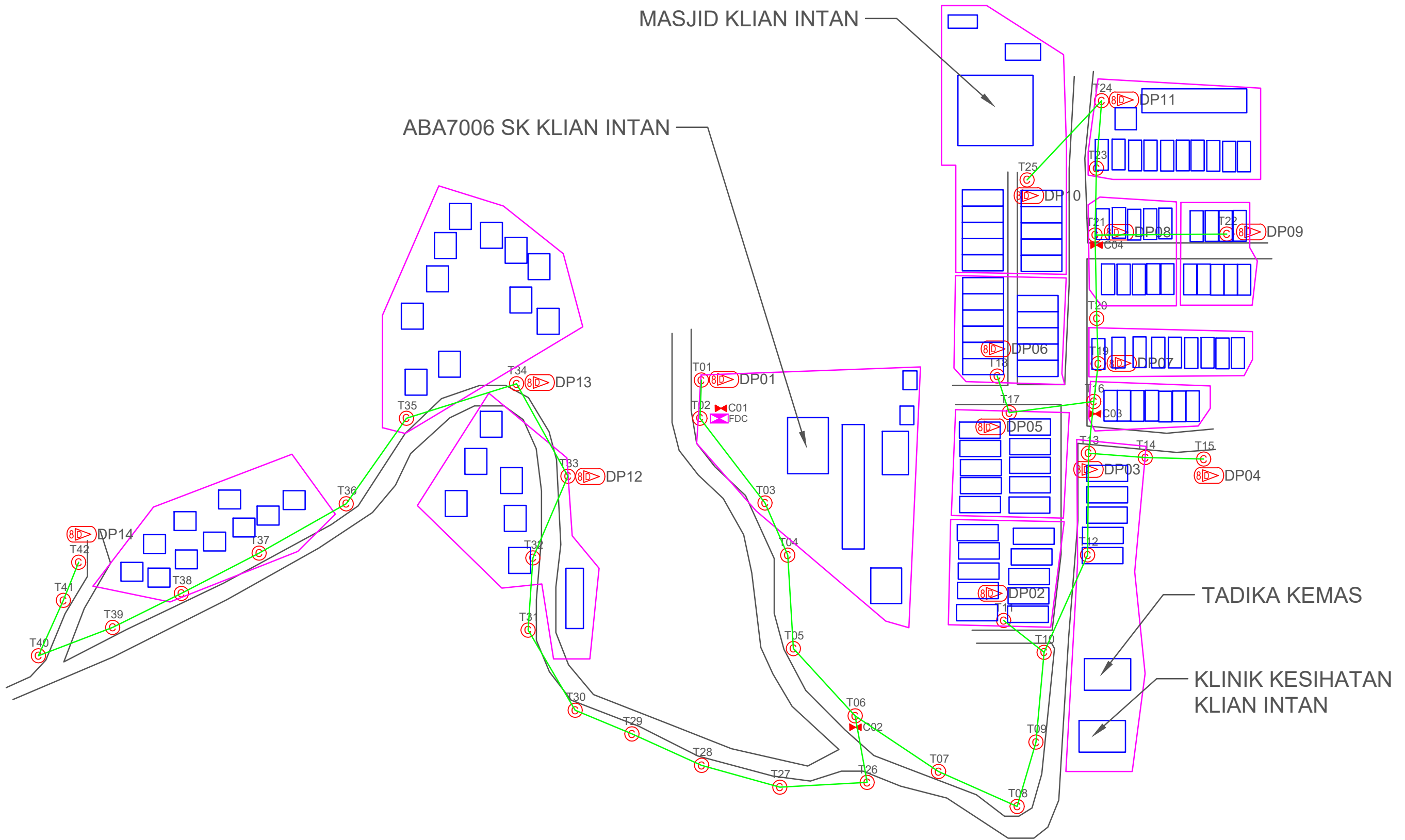
WABTECH SDN BHD  
(1398287-X)

## 6.0 3<sup>rd</sup> PARTIES DEPENDENCIES

NO	LOCAL COUNCIL / AUTHORITY	REMARK
1	Majlis Daerah Pengkalan Hulu	1275
2	JKR Daerah Pengkalan Hulu	-

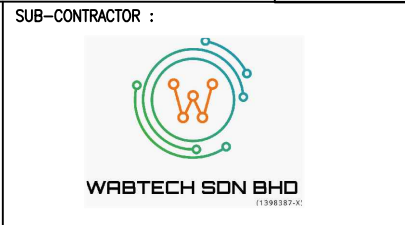
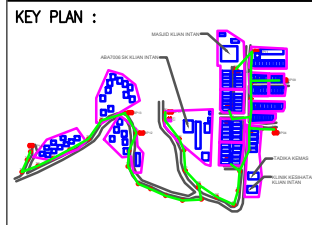
MASJID KLIAN INTAN

ABA7006 SK KLIAN INTAN



**TOTAL HOME PASSES: 112 UNITS**

LEGEND											
	12C FOC		Installed 1:4 splitter in FDC		Installed Pole (9m)		New Manhole(JRC7)		Tension Small / Tension Big		MH NO.
	24C FOC		FDP with (1:8) splitter		Installed Riser		House Number		Existing Manhole		Existing TNB Pole NO.
	48C FOC		Closure		Suspension Big		Existing TNB Pole		Closure NO.		New Pole NO.
	96C FOC		New Manhole (PIT)		Suspension Small		LOOP		FDP NO.		SEE A-A in this page
	144C FOC		Installed Pole (7.5M)		FDC		FDP Boundary		FDC NO.		SEE SHEET XXXX

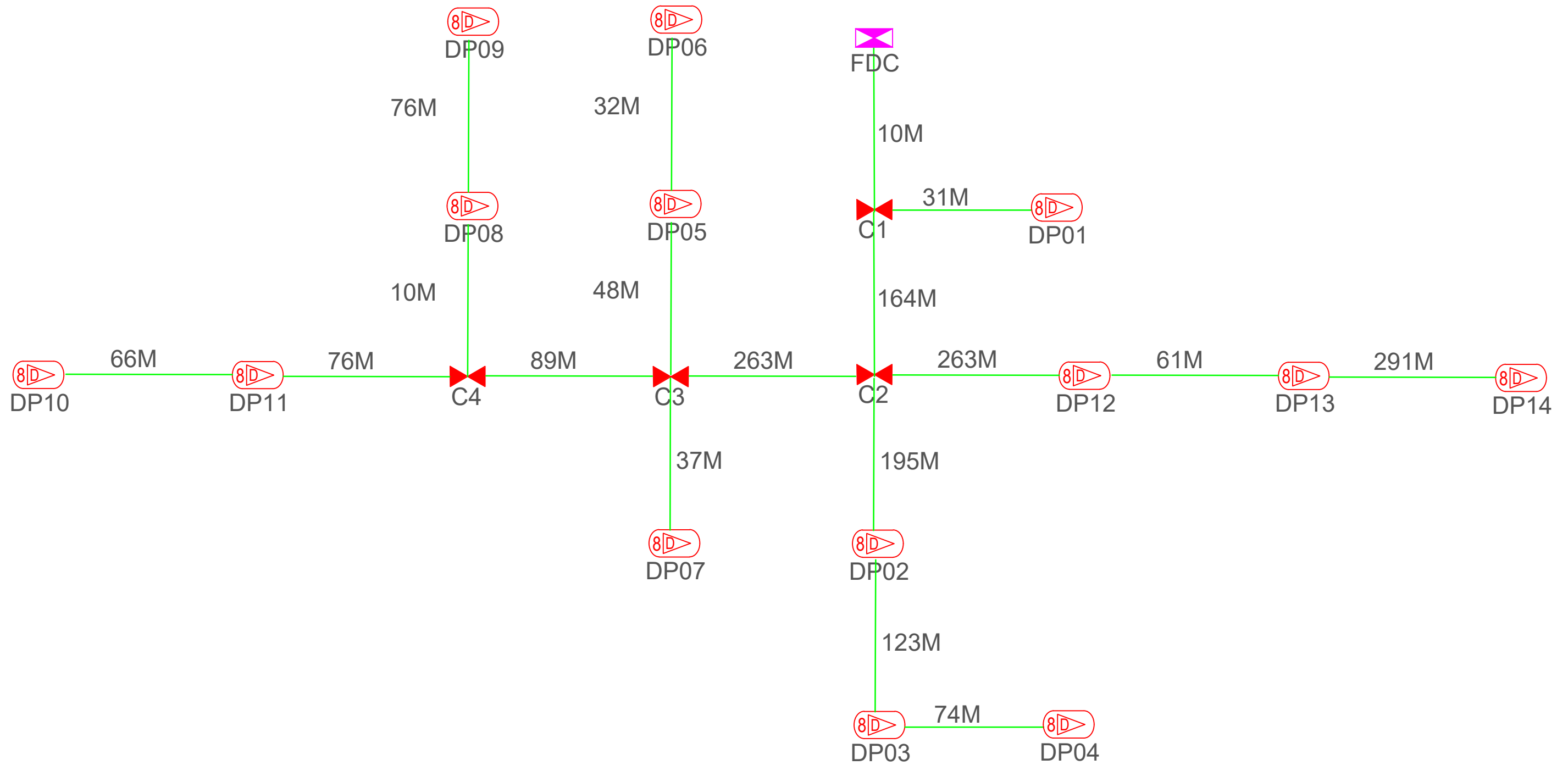


PROJECT TITLE:  
CONTRACT FOR THE PROVISION OF SUPPLY, INSTALLATION, AND COMMISSIONING OF FTTX NETWORK INFRASTRUCTURE - POP 2 PROJECT D-SIDE - ABA 7006 - SK KLIAN INTAN

DRAWING TITLE:  
**ABA7006 SK KLIAN INTAN**

PROJECT PHASE:  
**PROJECT PHASE**

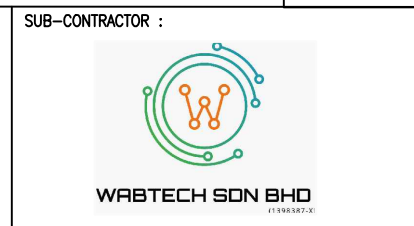
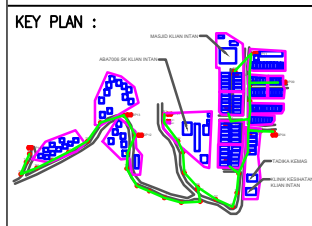
Design By	ENGINEER	Date	DATE
Drawn By	CAD ENGINEER	Scale	NTS
Checked By	ENGINEER	Job Number	JOB/NUMBER
DRAWING NUMBER :		Sheet :	
DRAWING/NUMBER		1/1	
THIS PRINT AND ITS COPYRIGHT ARE THE PROPERTY		Size : A3	



**TOTAL FOC DISTANCE: 1,909 METERS**

LEGEND

	12C FOC		Installed 1:4 splitter in FDC		Installed Pole (9m)		New Manhole(JRC7)		Tension Small / Tension Big		MH NO.
	24C FOC		FDP with (1:8) splitter		Installed Riser		House Number		Existing Manhole		Existing TNB Pole NO.
	48C FOC		Closure		Suspension Big		Existing TNB Pole		Closure NO.		New Pole NO.
	96C FOC		New Manhole (PT)		Suspension Small		LOOP		FDP NO.		SEE A-A in this page
	144C FOC		Installed Pole (7.5M)		FDC		FDP Boundary		FDC NO.		SEE SHEET XXXX



PROJECT TITLE:  
 CONTRACT FOR THE PROVISION OF SUPPLY, INSTALLATION, AND COMMISSIONING OF FTTX NETWORK INFRASTRUCTURE - POP 2 PROJECT D-SIDE - ABA 7006 - SK KLIAN INTAN

DRAWING TITLE:  
**ABA7006 SK KLIAN INTAN**

PROJECT PHASE:  
**PROJECT PHASE**

Design By	ENGINEER	Date	DATE
Drawn By	CAD ENGINEER	Scale	NTS
Checked By	ENGINEER	Job Number	JOB/NUMBER
DRAWING NUMBER :		Sheet :	
<b>DRAWING/NUMBER</b>		<b>1/1</b>	
THIS PRINT AND ITS COPYRIGHT ARE THE PROPERTY			
Size : <b>A3</b>			