

POP2 E/SIDE POI BSBU – Technical Proposal

Company Name	: A&A Megah Sdn Bhd
Company Address	: Lot A1, Tingkat Atas, Medan Niaga PKNP, Jalan Kempadang Perdana 1, 25150 Kuantan, Pahang
Prepared By	: Nurliyana Binti Noruldin
Date	: 09/08/2024



POINT A



POINT B

Starting Point

Site / Boundary Name	: Sekolah Kebangsaan Tebuk Pancur
Address	: Jalan Bukit Merah, Kampong Tebok Panchor
District	: Simpang Empat Semanggol
Postcode	: 34400
State	: Perak
GPS Coordinate	: 5.0161, 100.6512
LRD	: A

End Point

Site / Boundary Name	: Sekolah Kebangsaan Tebuk Pancur
Address	: Jalan Bukit Merah, Kampong Tebok Panchor
District	: Simpang Empat Semanggol
Postcode	: 34400
State	: Perak
GPS Coordinate	: 5.0167, 100.6361
LRD	: B

Work Summary

No	Proposed Distance and Method	Unit	Qty
1	Horizontal Directional Drilling (HDD)	m	0
2	Carriage Way Open trench (CW)	m	0
3	Grass Verge Open Trenching (GV)	m	0
4	Micro trenching (MT)	m	0
	Total		0

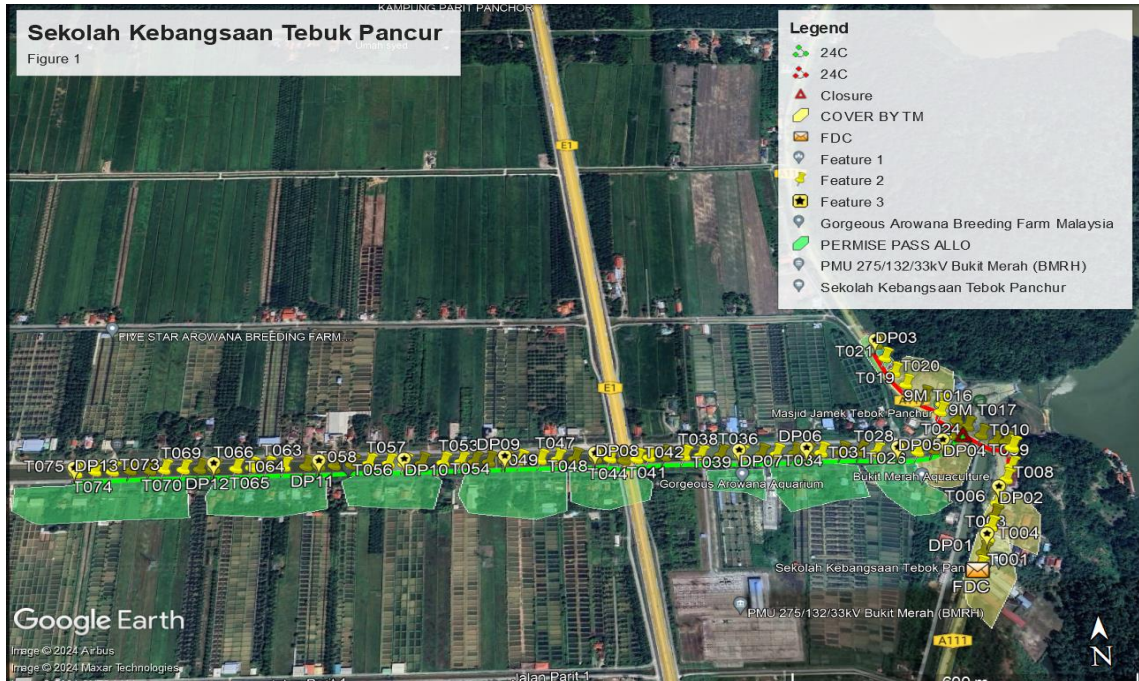
	Other Information	Unit	Qty
1	Proposed Manhole	EA	0
2	Proposed Pole	EA	75
3	Joint Closure	EA	1
4	Estimated time required for completion	days	30

Local Authority Summary

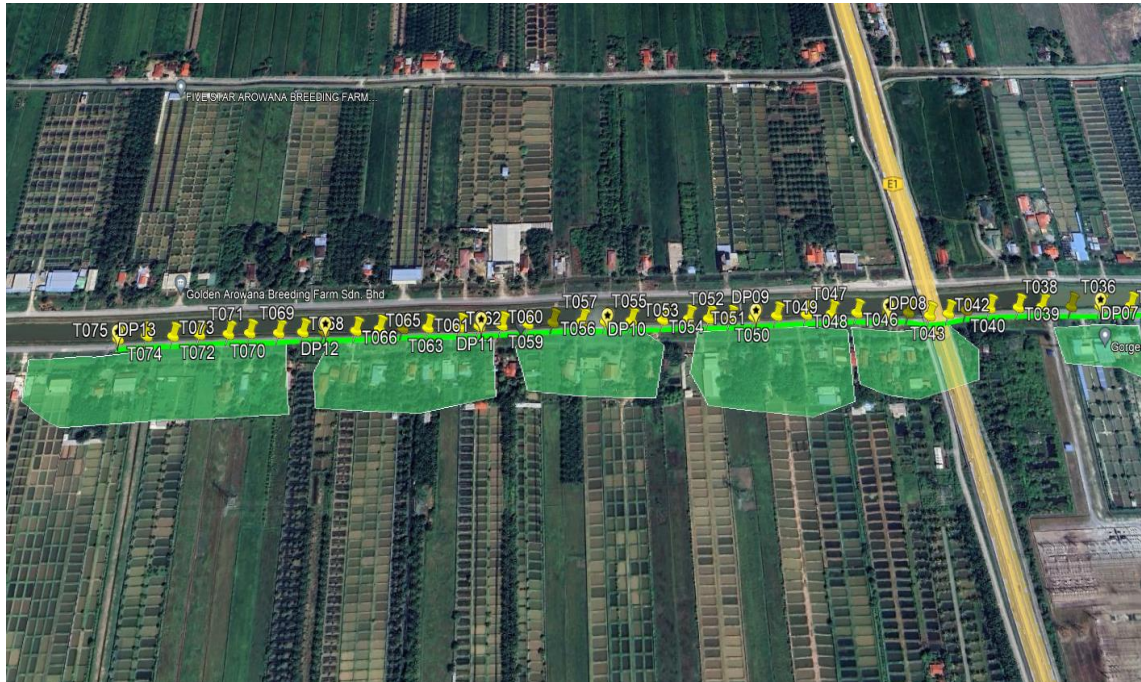
1. Daerah Bagan Serai

Bil	Items	Owner	Quantity	Distance
1	HDD	JKR	-	-
		Majlis	-	-
		Estate / Private Land	-	-
2	New Pole	JKR	22pc	647m
		Majlis	-	-
		Estate / Private Land	53pc	1740m
3	Existing TNB Pole	JKR	-	-
		Majlis	-	-
		Estate / Private Land	-	-
Total				2387m

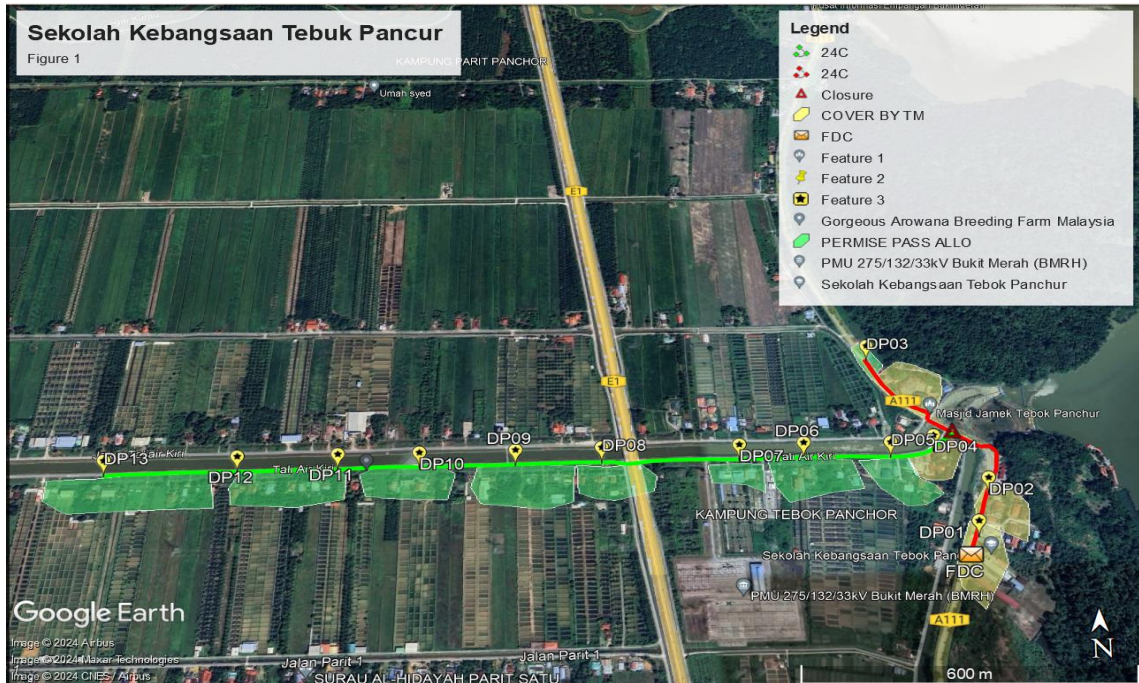
Site Plan – KMZ (Overview site area)



ROJEK PENYEDIAAN DAN PENYELENGGARAAN POINT OF PRESENCE (POP) FASA 2: HAB INFRASTRUKTUR GENTIAN OPTIK BERHAMPIRAN DENGAN SEKOLAH, KAWASAN PERINDUSTRIAN, PREMIS KERAJAAN DAN KOMUNITI SEKITARNYA OLEH KEMENTERIAN KOMUNIKASI MALAYSIA - ZON UTARA (KKMM.400-11/17/132(1))



Site Plan – KMZ Routing (All Local Authority)

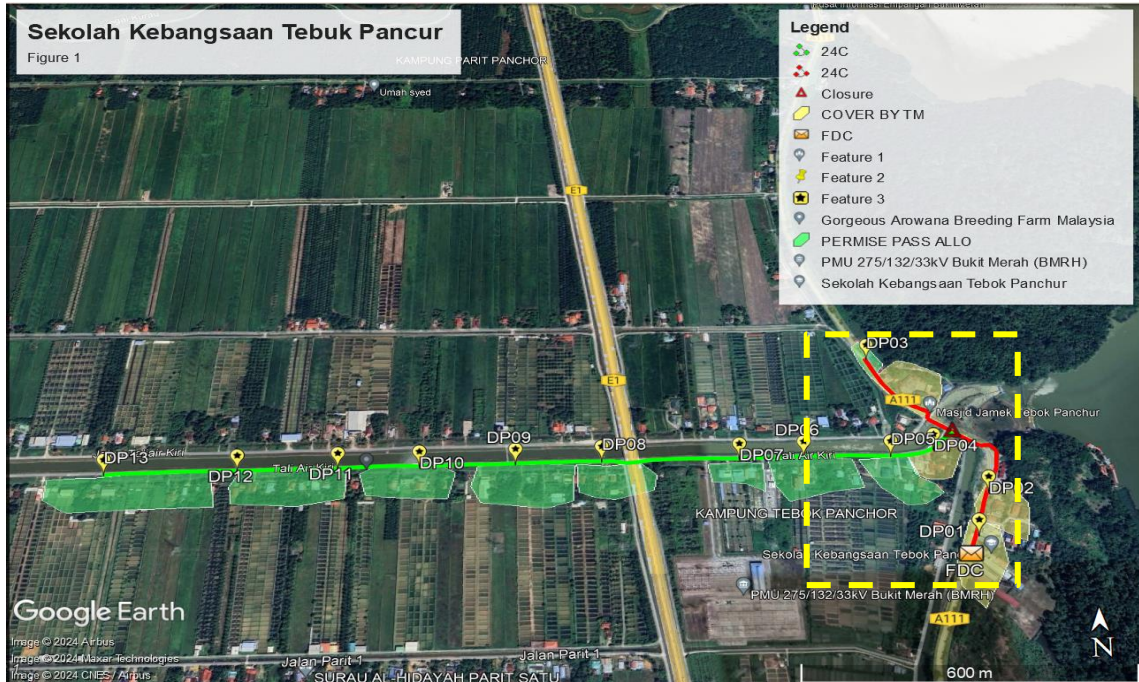


Green Colour – Estate/Private Land

Red Colour – JKR Kerian

Site Plan – KMZ Routing (All site area)

Route 1



ROJEK PENYEDIAAN DAN PENYELENGGARAAN POINT OF PRESENCE (POP) FASA 2: HAB INFRASTRUKTUR GENTIAN OPTIK BERHAMPIRAN DENGAN SEKOLAH, KAWASAN PERINDUSTRIAN, PREMIS KERAJAAN DAN KOMUNITI SEKITARNYA OLEH KEMENTERIAN KOMUNIKASI MALAYSIA - ZON UTARA (KKMM.400-11/17/132(1))



Prop New Pole Lat & Long Table

PROPOSED POLE COORDINATE		
POLE NUMBER	LATITUDE	LONGITUDE
T001	5.014364°	100.651392°
T002	5.014628°	100.651497°
T003	5.014879°	100.651667°
T004	5.015122°	100.651720°
T005	5.015328°	100.651815°
T006	5.015574°	100.651908°
T007	5.015799°	100.652005°
T008	5.016039°	100.652139°
T009	5.016288°	100.652267°
T010	5.016650°	100.652334°
T011	5.016795°	100.652263°
T012	5.016802°	100.652092°
T013	5.016956°	100.651881°
T014	5.017144°	100.651661°
T015	5.017271°	100.651493°
T016	5.017464°	100.651235°
T017	5.017625°	100.651287°
T018	5.017802°	100.651001°
T019	5.018071°	100.650718°
T020	5.018342°	100.650549°
T021	5.018664°	100.650424°
T022	5.018949°	100.650342°
T023	5.016960°	100.651397°
T024	5.016766°	100.651179°
T025	5.016689°	100.650993°
T026	5.016649°	100.650715°
T027	5.016651°	100.650389°
T028	5.016672°	100.649995°
T029	5.016695°	100.649720°
T030	5.016698°	100.649402°
T031	5.016704°	100.649042°
T032	5.016704°	100.648806°
T033	5.016702°	100.648573°
T034	5.016698°	100.648258°
T035	5.016699°	100.647998°
T036	5.016698°	100.647671°
T037	5.016714°	100.647294°
T038	5.016714°	100.646941°
T039	5.016716°	100.646661°
T040	5.016725°	100.646328°
T041	5.016721°	100.646052°
T042	5.016693°	100.645839°
T043	5.016678°	100.645614°

T044	5.016726°	100.645377°
T045	5.016732°	100.645130°
T046	5.016736°	100.644765°
T047	5.016731°	100.644464°
T048	5.016734°	100.644172°
T049	5.016739°	100.643823°
T050	5.016737°	100.643559°
T051	5.016730°	100.643279°
T052	5.016746°	100.643027°
T053	5.016750°	100.642793°
T054	5.016745°	100.642489°
T055	5.016746°	100.642118°
T056	5.016746°	100.641819°
T057	5.016759°	100.641545°
T058	5.016769°	100.641205°
T059	5.016764°	100.640911°
T060	5.016761°	100.640609°
T061	5.016762°	100.640346°
T062	5.016764°	100.640120°
T063	5.016768°	100.639746°
T064	5.016774°	100.639454°
T065	5.016775°	100.639186°
T066	5.016766°	100.638912°
T067	5.016773°	100.638591°
T068	5.016770°	100.638296°
T069	5.016771°	100.638019°
T070	5.016783°	100.637682°
T071	5.016781°	100.637436°
T072	5.016789°	100.637101°
T073	5.016780°	100.636798°
T074	5.016796°	100.636491°
T075	5.016775°	100.636164°

Overall Pole (Propose New)

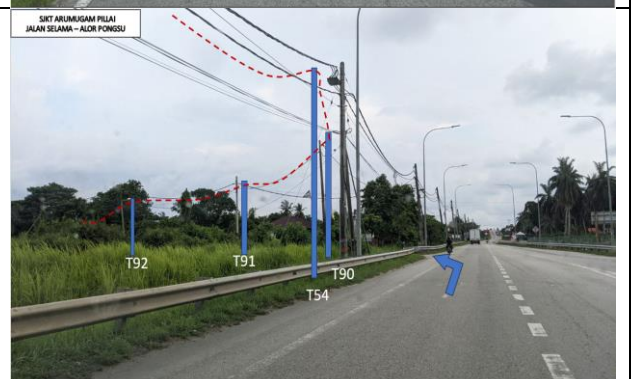
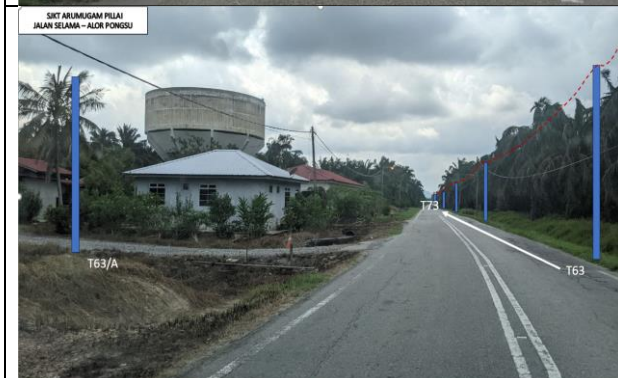
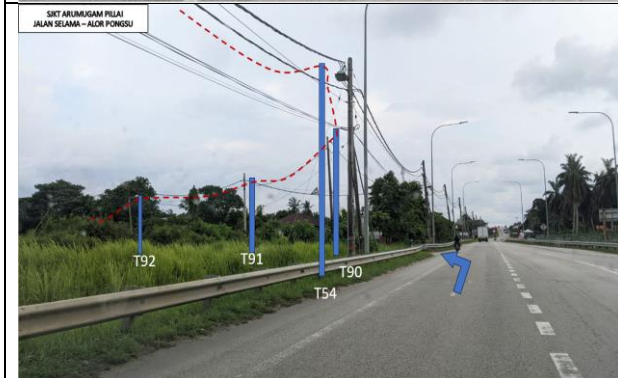
	Pole & Manhole ID	Distance	Latitude	Longitude	Local Authority
1	T001	30	5.014364°	100.651392°	JKR Kerian
2	T002	30	5.014628°	100.651497°	JKR Kerian
3	T003	35	5.014879°	100.651667°	JKR Kerian
4	T004	30	5.015122°	100.651720°	JKR Kerian
5	T005	38	5.015328°	100.651815°	JKR Kerian
6	T006	34	5.015574°	100.651908°	JKR Kerian
7	T007	28	5.015799°	100.652005°	JKR Kerian
8	T008	30	5.016039°	100.652139°	JKR Kerian
9	T009	39	5.016288°	100.652267°	JKR Kerian
10	T010	22	5.016650°	100.652334°	JKR Kerian
11	T011	17	5.016795°	100.652263°	JKR Kerian
12	T012	19	5.016802°	100.652092°	JKR Kerian
13	T013	31	5.016956°	100.651881°	JKR Kerian
14	T014	17	5.017144°	100.651661°	JKR Kerian
15	T015	15	5.017271°	100.651493°	JKR Kerian
16	T016	14	5.017464°	100.651235°	JKR Kerian
17	T017	37	5.017625°	100.651287°	JKR Kerian
18	T018	17	5.017802°	100.651001°	JKR Kerian
19	T019	36	5.018071°	100.650718°	JKR Kerian
20	T020	42	5.018342°	100.650549°	JKR Kerian
21	T021	32	5.018664°	100.650424°	JKR Kerian
22	T022	43	5.018949°	100.650342°	JKR Kerian
23	T023	40	5.016960°	100.651397°	Private Land/PLB
24	T024	38	5.016766°	100.651179°	Private Land/PLB
25	T025	35	5.016689°	100.650993°	Private Land/PLB
26	T026	22	5.016649°	100.650715°	Private Land/PLB
27	T027	23	5.016651°	100.650389°	Private Land/PLB
28	T028	17	5.016672°	100.649995°	Private Land/PLB
29	T029	16	5.016695°	100.649720°	Private Land/PLB
30	T030	18	5.016698°	100.649402°	Private Land/PLB
31	T031	35	5.016704°	100.649042°	Private Land/PLB
32	T032	29	5.016704°	100.648806°	Private Land/PLB
33	T033	42	5.016702°	100.648573°	Private Land/PLB
34	T034	36	5.016698°	100.648258°	Private Land/PLB
35	T035	20	5.016699°	100.647998°	Private Land/PLB
36	T036	13	5.016698°	100.647671°	Private Land/PLB
37	T037	17	5.016714°	100.647294°	Private Land/PLB
38	T038	29	5.016714°	100.646941°	Private Land/PLB
39	T039	27	5.016716°	100.646661°	Private Land/PLB
40	T040	24	5.016725°	100.646328°	Private Land/PLB
41	T041	34	5.016721°	100.646052°	Private Land/PLB
42	T042	18	5.016693°	100.645839°	Private Land/PLB
43	T043	26	5.016678°	100.645614°	Private Land/PLB
44	T044	27	5.016726°	100.645377°	Private Land/PLB
45	T045	40	5.016732°	100.645130°	Private Land/PLB
46	T046	33	5.016736°	100.644765°	Private Land/PLB
47	T047	33	5.016731°	100.644464°	Private Land/PLB
48	T048	38	5.016734°	100.644172°	Private Land/PLB
49	T049	29	5.016739°	100.643823°	Private Land/PLB
50	T050	30	5.016737°	100.643559°	Private Land/PLB
51	T051	28	5.016730°	100.643279°	Private Land/PLB

52	T052	25	5.016746°	100.643027°	Private Land/PLB
53	T053	32	5.016750°	100.642793°	Private Land/PLB
54	T054	40	5.016745°	100.642489°	Private Land/PLB
55	T055	33	5.016746°	100.642118°	Private Land/PLB
56	T056	28	5.016746°	100.641819°	Private Land/PLB
57	T057	38	5.016759°	100.641545°	Private Land/PLB
58	T058	30	5.016769°	100.641205°	Private Land/PLB
59	T059	33	5.016764°	100.640911°	Private Land/PLB
60	T060	28	5.016761°	100.640609°	Private Land/PLB
61	T061	25	5.016762°	100.640346°	Private Land/PLB
62	T062	41	5.016764°	100.640120°	Private Land/PLB
63	T063	31	5.016768°	100.639746°	Private Land/PLB
64	T064	27	5.016774°	100.639454°	Private Land/PLB
65	T065	25	5.016775°	100.639186°	Private Land/PLB
66	T066	30	5.016766°	100.638912°	Private Land/PLB
67	T067	27	5.016773°	100.638591°	Private Land/PLB
68	T068	31	5.016770°	100.638296°	Private Land/PLB
69	T069	26	5.016771°	100.638019°	Private Land/PLB
70	T070	32	5.016783°	100.637682°	Private Land/PLB
71	T071	30	5.016781°	100.637436°	Private Land/PLB
72	T072	36	5.016789°	100.637101°	Private Land/PLB
73	T073	32	5.016780°	100.636798°	Private Land/PLB
74	T074	38	5.016796°	100.636491°	Private Land/PLB
75	T075	36	5.016775°	100.636164°	Private Land/PLB

Site Photos – Proposed New Pole



ROJEK PENYEDIAAN DAN PENYELENGGARAAN POINT OF PRESENCE (POP) FASA 2: HAB INFRASTRUKTUR GENTIAN OPTIK BERHAMPIRAN DENGAN SEKOLAH, KAWASAN PERINDUSTRIAN, PREMIS KERAJAAN DAN KOMUNITI SEKITARNYA OLEH KEMENTERIAN KOMUNIKASI MALAYSIA - ZON UTARA (KKMM.400-11/17/132(1))







ROJEK PENYEDIAAN DAN PENYELENGGARAAN POINT OF PRESENCE (POP) FASA 2: HAB INFRASTRUKTUR GENTIAN OPTIK BERHAMPIRAN DENGAN SEKOLAH, KAWASAN PERINDUSTRIAN, PREMIS KERAJAAN DAN KOMUNITI SEKITARNYA OLEH KEMENTERIAN KOMUNIKASI MALAYSIA - ZON UTARA (KKMM.400-11/17/132(1))



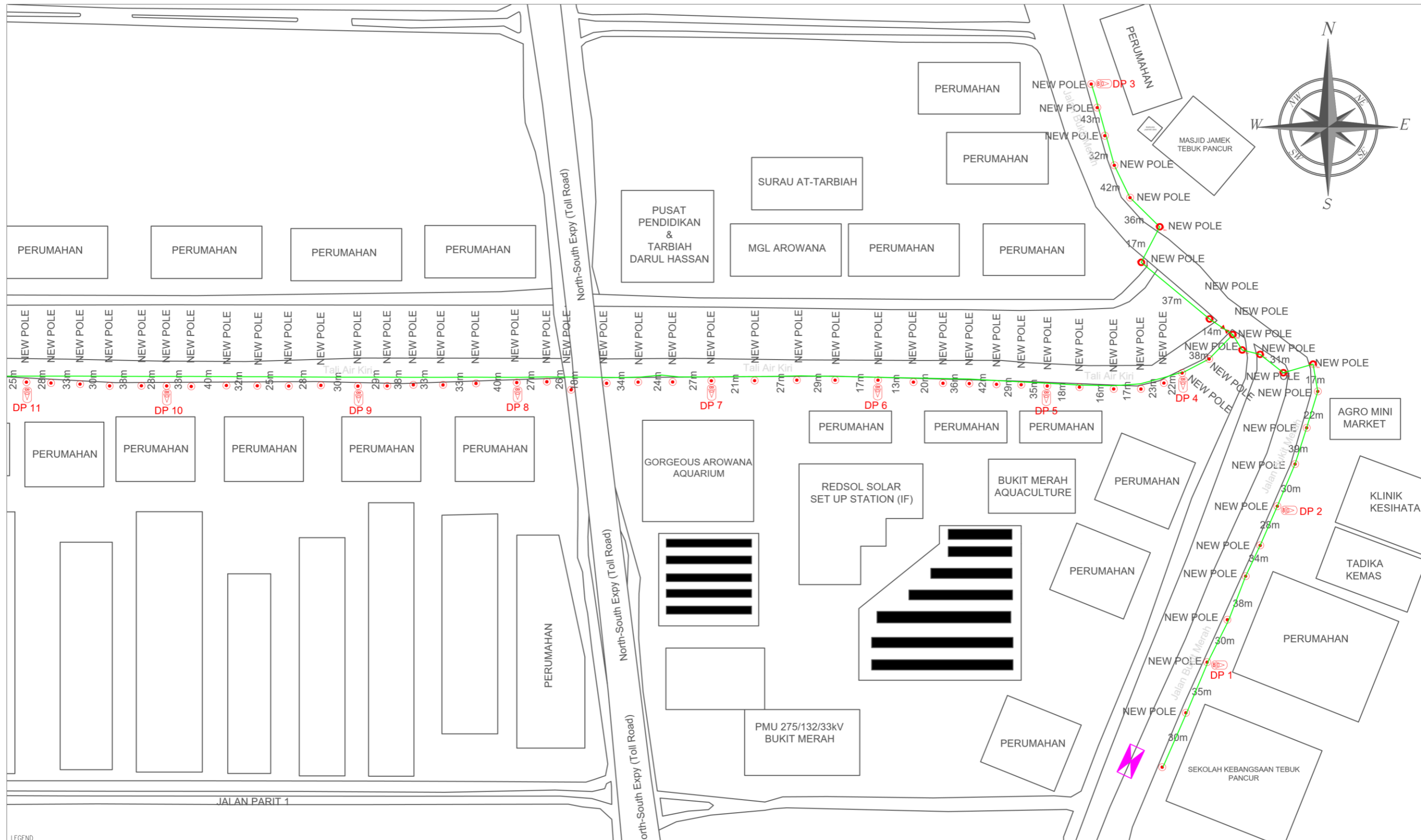
3rd Parties Dependencies

No.	Local Council/ Authority	Remark
1	Private Land/PLB/JPS	Pejabat Daerah dan Tanah Kerian
2	JKR	JKR Kerian

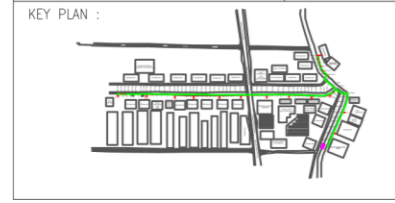


LEGEND	
12C FOC	Installed 1:8 splitter in FDC
24C FOC	FDP with (1:8) splitter
36C FOC	Closure
48C FOC	New Manhole (PIT)
96C FOC	Installed Pole (7.5M)
○	Installed Pole (9m)
○	Installed Riser
SB	Suspension Big
SS	Suspension Small
■	FDC
C7	New Manhole(JRC7)
#	House Number
●	Existing TNB Pole
○	LOOP
—	FDP Boundary
TS/TB	Tension Small / Tension Big
□	Existing Manhole
CL01	Closure NO.
DP1	FDP NO.
C01	FDC NO.
MH1	MH NO.
TKS-1	Existing TNB Pole NO.
P001	New Pole NO.
○	Pole Ring

KEY PLAN : 	OWNER / DEVELOPER: KEMENTERIAN KOMUNIKASI DAN DIGITAL	MAIN CONTRACTOR: APEX COMMUNICATIONS SDN BHD 187475-V PRIVASAT	SUB-CONTRACTOR: allo! The Smarter Connection ALLO TECHNOLOGY SDN BHD Level 3, Left Wing, College of Computer Science & Information Technology (CSIT) UNTEK, 43000 Kajang, Selangor TEL: 1 300-38-8000 FAX: (60) 3 8800 3221 E-MAIL: info@allo.my WEBSITE: HTTP://WWW.ALLO.MY	PROJECT TITLE: SUPPLY, INSTALLATION AND COMMISSIONING OF FTtx NETWORK INFRASTRUCTURE - POP 2 PROJECT (D-SIDE) - PMU BMRH FOR ABA3013 SK TEBUK PANCUR	DRAWING TITLE: PLAN SEKOLAH TEBUK PANCUR PROJECT PHASE: ISSUE FOR DESIGN	Design By : KHAIRUL Drawn By : KHAIRUL Checked By : IZATI DRAWING NUMBER : ALLO/AA/003 THIS PRINT AND ITS COPYRIGHT ARE THE PROPERTY OF ALLO TECHNOLOGY SDN BHD	Date : 02/08/2024 Scale : NOT TO SCALE Job Number : Sheet : 1 Size : A3
-----------------------	---	---	--	--	--	---	---



LEGEND									
	12C FOC		Installed 1:8 splitter in FDC		Installed Pole (9m)		New Manhole(JRC7)		Tension Small / Tension Big
	24C FOC		FDP with (1:8) splitter		Installed Riser		House Number		Existing Manhole
	36C FOC		Closure		Suspension Big		Existing TNB Pole		Closure NO.
	48C FOC		New Manhole (PIT)		Suspension Small		LOOP		FDP NO.
	96C FOC		Installed Pole (7.5M)		FDC		FDP Boundary		FDC NO.
									MH NO.
									Existing TNB Pole NO.
									New Pole NO.
									Pole Ring
									SEE A-A in this page
									SEE SHEET XXX



OWNER / DEVELOPER:

MAIN CONTRACTOR:

PRIVASAT

SUB-CONTRACTOR:

ALLO TECHNOLOGY SDN BHD
Level 3, Left Wing,
College of Computer Science & Information Technology (CSIT)
UNISEL, 43000 Kajang, Selangor
TEL: 1 300-38-8000
FAX: (60) 3 8800 3221
E-MAIL: info@allo.my WEBSITE: HTTP://WWW.ALLO.MY

PROJECT TITLE:
SUPPLY, INSTALLATION AND COMMISSIONING OF FTTX NETWORK INFRASTRUCTURE - POP 2 PROJECT (D-SIDE) - PMU BMRH FOR ABA3013 SK TEBUK PANCUR

DRAWING TITLE:
PLAN SEKOLAH TEBUK PANCUR

PROJECT PHASE:
ISSUE FOR DESIGN

Design By : KHAIRUL	Date : 02/08/2024
Drawn By : KHAIRUL	Scale : NOT TO SCALE
Checked By : IZATI	Job Number :
DRAWING NUMBER : ALLO/AA/003	Sheet : 2/2
THIS PRINT AND ITS COPYRIGHT ARE THE PROPERTY OF ALLO TECHNOLOGY SDN BHD	
Size : A3	