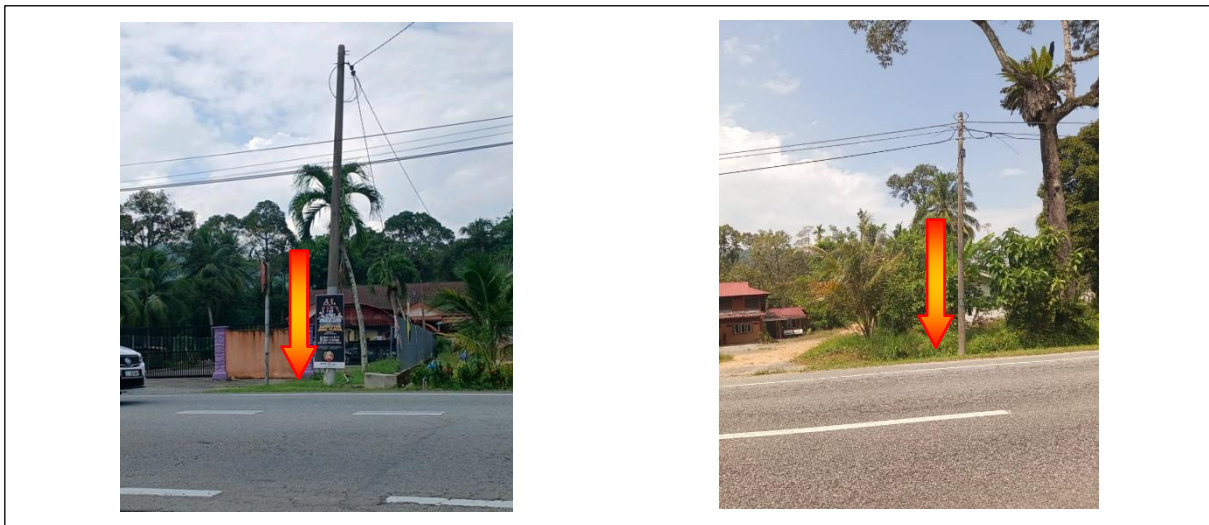


POP2 D/SIDE SK DATO' PANGLIMA BUKIT GANTANG – Technical Proposal

Company Name	:	Kuasa Sekata Sdn. Bhd.
Company Address	:	No. 2, Kompleks Penghulu, Tasik Biru Kundang, 48050 Rawang, Selangor
Prepared By	:	Muhammad Fahmi Bin Ahmad Zure
Date	:	23/12/2024



POINT A

POINT B

Starting Point

Site / Boundary Name	:	SK DATO' PANGLIMA BUKIT GANTANG
Address	:	Jalan Kuala Kangsar
District	:	Changkat Jering
Postcode	:	34850
State	:	Perak
GPS Coordinate	:	4.78233 , 100.772472
LRD	:	A

End Point

Site / Boundary Name	:	SK DATO' PANGLIMA BUKIT GANTANG
Address	:	Klinik Desa Bukit Gantang, Jalan Kampung Bukit Gantang
District	:	Changkat Jering
Postcode	:	34850
State	:	Perak
GPS Coordinate	:	4.783842 , 100.760606
LRD	:	B



PROJEK PENYEDIAAN DAN PENYELENGGARAAN POINT OF PRESENCE (POP) FASA 2: HAB INFRASTRUKTUR GENTIAN OPTIK BERHAMPIRAN DENGAN SEKOLAH, KAWASAN PERINDUSTRIAN, PREMIS KERAJAAN DAN KOMUNITI SEKITARNYA OLEH KEMENTERIAN KOMUNIKASI MALAYSIA - ZON UTARA (KKMM.400-11/17/132(1))



1.0 Work Summary

No	Proposed Distance and Method	Unit	Qty
1	Horizontal Directional Drilling (HDD)	m	0
2	Carriage Way Open trench (CW)	m	0
3	Grass Verge Open Trenching (GV)	m	0
4	Micro trenching (MT)	m	0
	Total		0

	Other Information	Unit	Qty
1	Proposed Manhole	EA	0
2	Proposed Pole	EA	100
3	Joint Closure	EA	2
4	Estimated time required for completion	days	60



PROJEK PENYEDIAAN DAN PENYELENGGARAAN POINT OF PRESENCE (POP) FASA 2: HAB INFRASTRUKTUR GENTIAN OPTIK BERHAMPIRAN DENGAN SEKOLAH, KAWASAN PERINDUSTRIAN, PREMIS KERAJAAN DAN KOMUNITI SEKITARNYA OLEH KEMENTERIAN KOMUNIKASI MALAYSIA - ZON UTARA (KKMM.400-11/17/132(1))



2.0 Local Authority Summary

1. Daerah Changkat Jering

Bil	Items	Owner	Quantity (ea)	Distance (m)
1	New Pole	JKR	87	2,775
		Pejabat Daerah & Tanah	13	425
		Estate / Private Land	-	-
Total				3,200

3.0 Site Plan – KMZ (Overview site area)



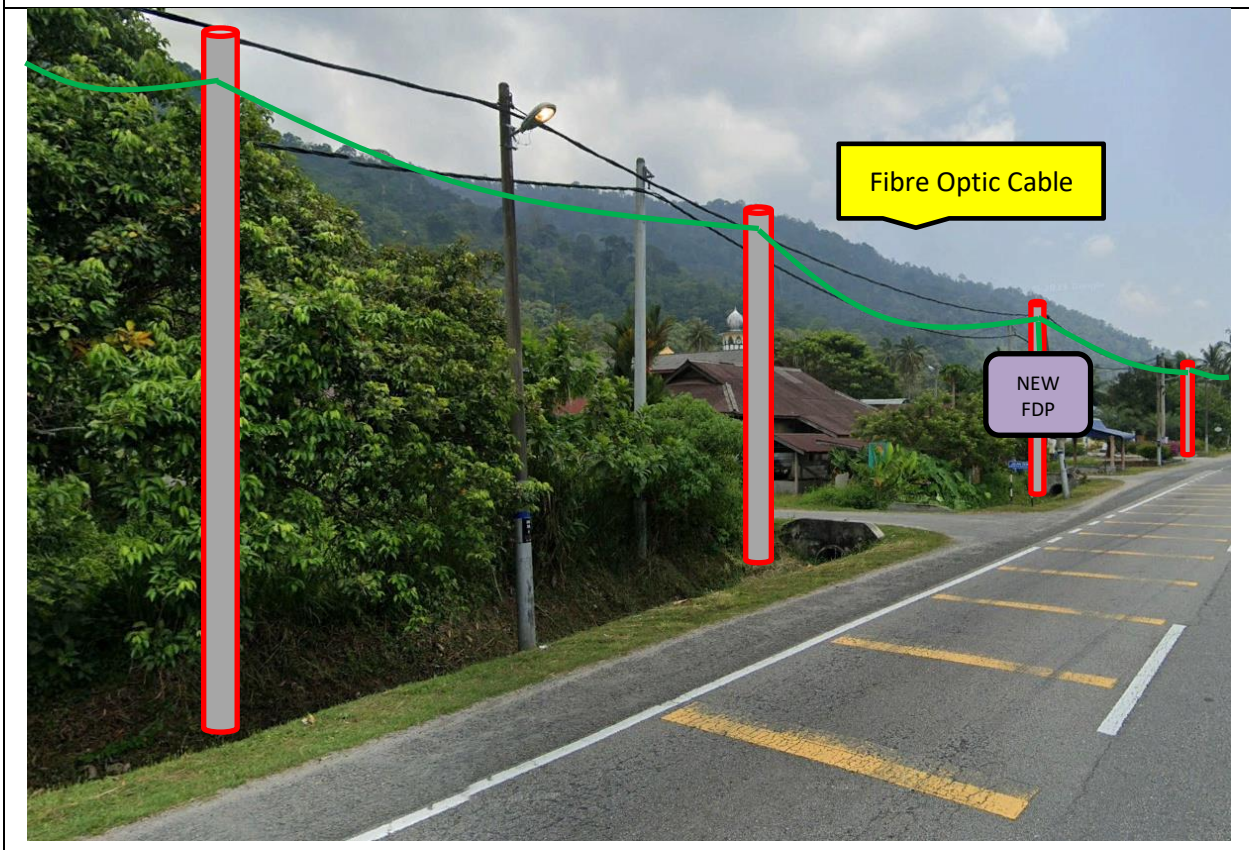
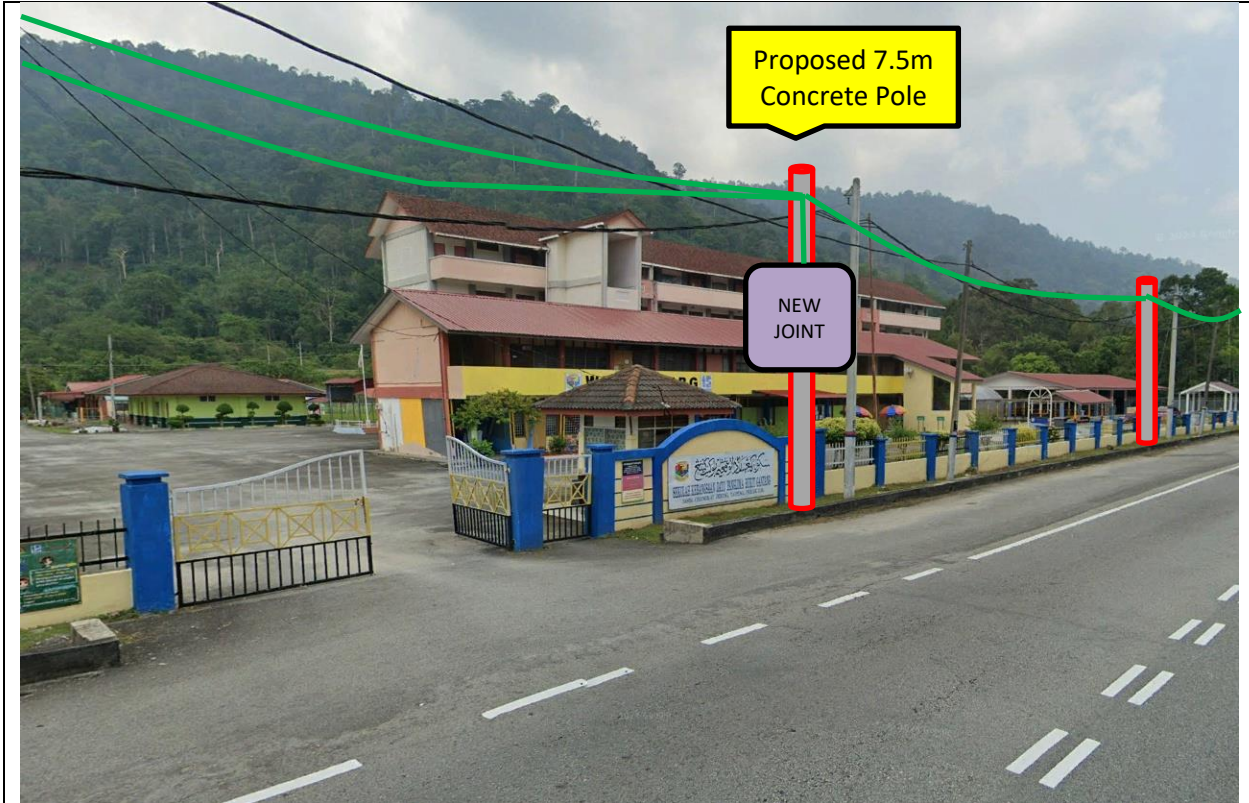
4.0 Site Plan – KMZ Routing (All Local Authority)

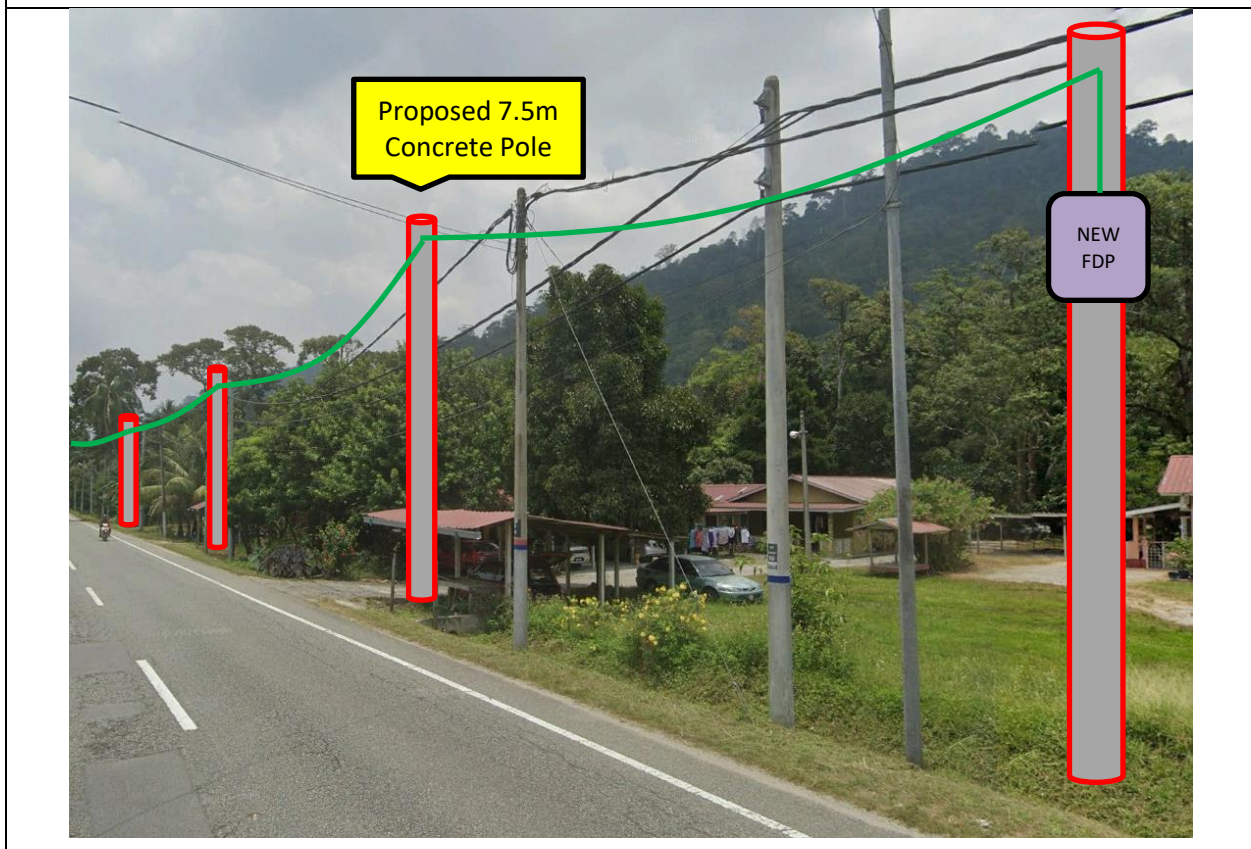
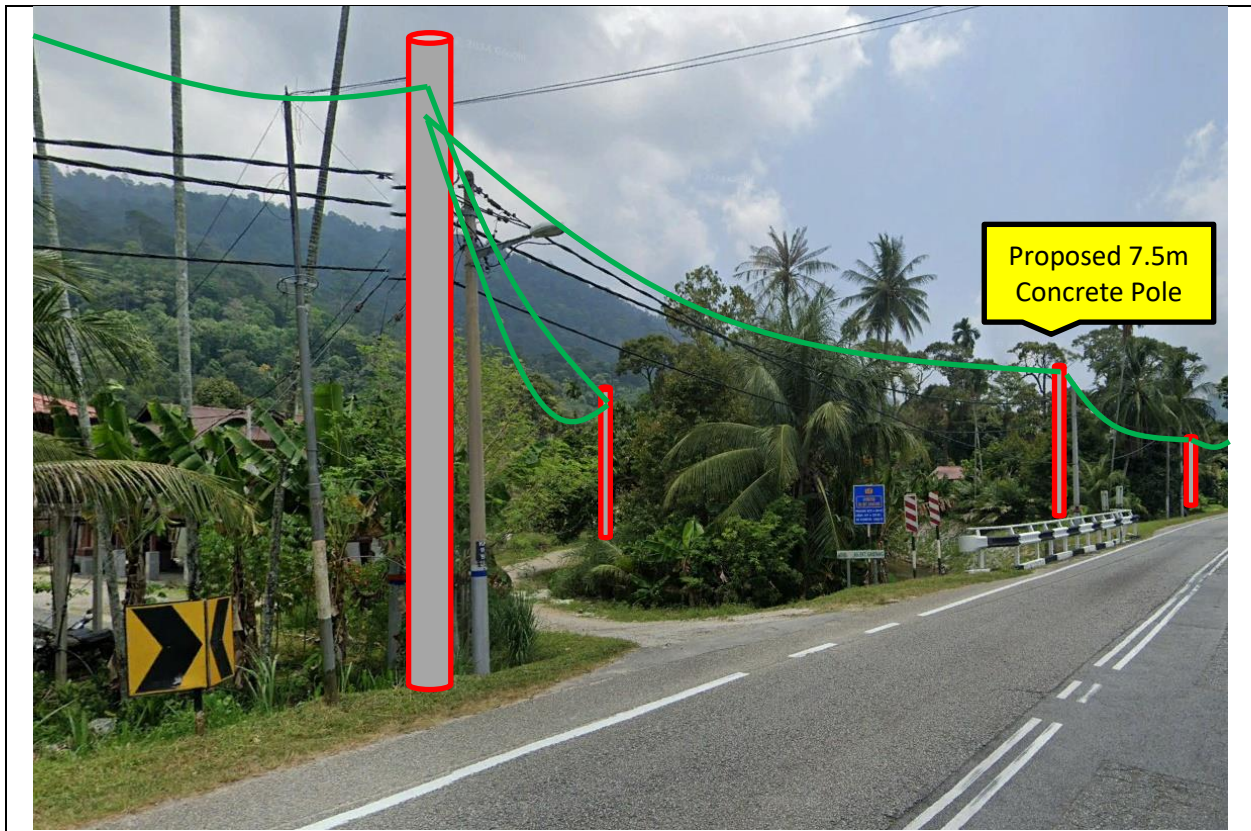


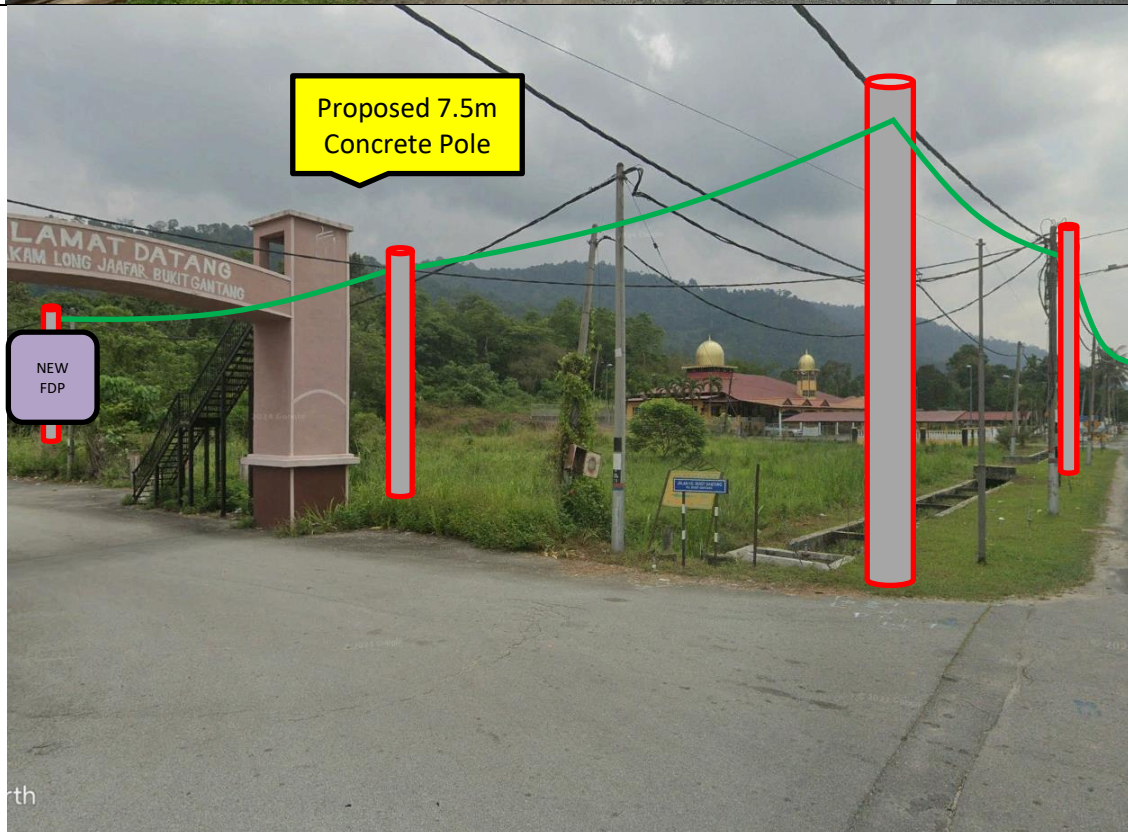
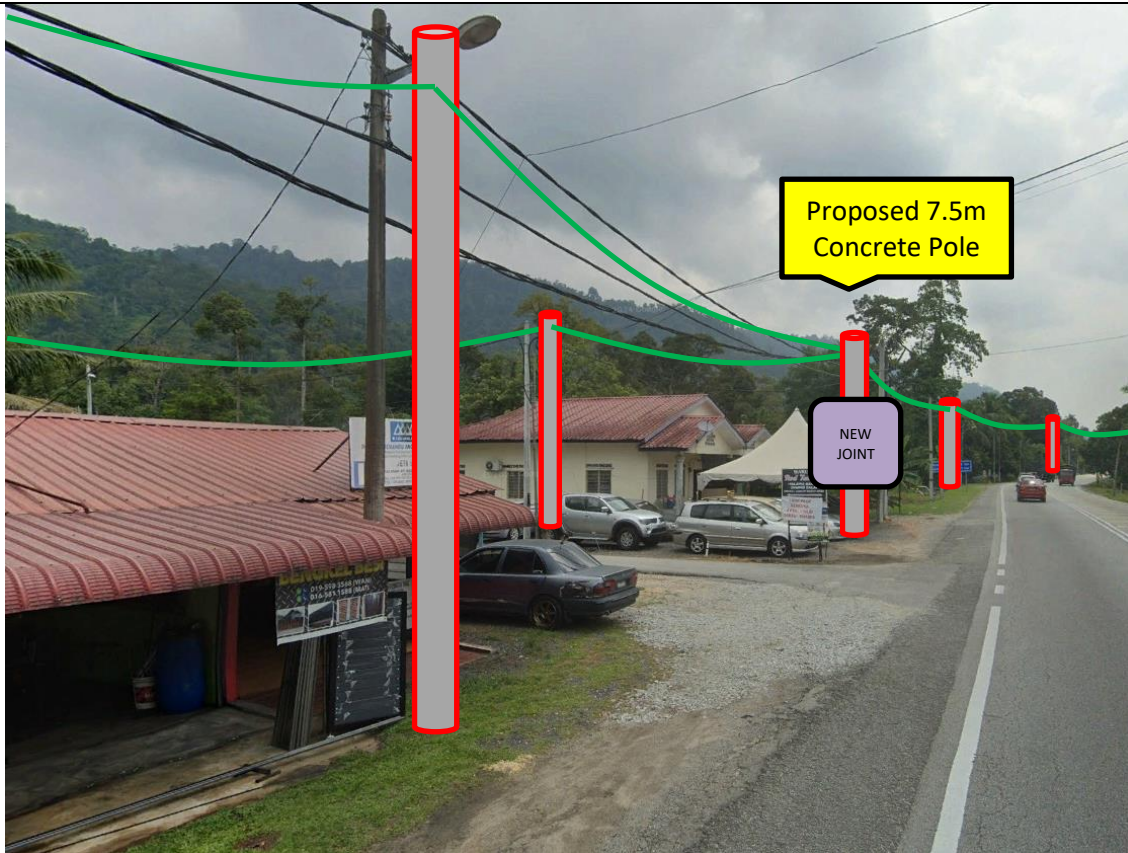
Blue Colour – Pejabat Daerah & Tanah Authority

Red Colour – JKR Authority

5.0 Site Photo – Proposed New Pole







6.0 Site Plan – KMZ Routing (Prop new Pole)



7.0 Overall New Pole Proposed

Proposed New Pole Coordinate					
No.	Pole ID	Distance (m)	Latitude	Longitude	Local Authority
1	FDC ABA6020	0	4.78233	100.772472	JKR Daerah LMS Taiping
2	ABA6020 T001	20	4.782289	100.772513	JKR Daerah LMS Taiping
3	ABA6020 T002	30	4.78227	100.772743	JKR Daerah LMS Taiping
4	ABA6020 T003	35	4.782229	100.773053	JKR Daerah LMS Taiping
5	ABA6020 T004	35	4.782187	100.773348	JKR Daerah LMS Taiping
6	ABA6020 T005	30	4.782154	100.773586	JKR Daerah LMS Taiping
7	ABA6020 T006	30	4.782108	100.773841	JKR Daerah LMS Taiping
8	ABA6020 T007	20	4.782088	100.773998	JKR Daerah LMS Taiping
9	ABA6020 T008	25	4.782064	100.774183	JKR Daerah LMS Taiping
10	ABA6020 T009	30	4.782037	100.774388	JKR Daerah LMS Taiping
11	ABA6020 T010	30	4.782014	100.774566	JKR Daerah LMS Taiping
12	ABA6020 T011	35	4.781976	100.77482	JKR Daerah LMS Taiping
13	ABA6020 T012	35	4.781951	100.775056	JKR Daerah LMS Taiping
14	ABA6020 T013	30	4.781912	100.775344	JKR Daerah LMS Taiping
15	ABA6020 T014	30	4.781873	100.775605	JKR Daerah LMS Taiping
16	ABA6020 T015	30	4.781836	100.775866	JKR Daerah LMS Taiping
17	ABA6020 T016	25	4.781815	100.776036	JKR Daerah LMS Taiping
18	ABA6020 T017	30	4.781786	100.776241	JKR Daerah LMS Taiping
19	ABA6020 T018	30	4.781765	100.776428	JKR Daerah LMS Taiping
20	ABA6020 T019	30	4.781733	100.776642	JKR Daerah LMS Taiping
21	ABA6020 T020	30	4.781705	100.776863	JKR Daerah LMS Taiping
22	ABA6020 T021	30	4.78167	100.777076	JKR Daerah LMS Taiping
23	ABA6020 T022	25	4.781653	100.777285	JKR Daerah LMS Taiping
24	ABA6020 T023	30	4.781612	100.77753	JKR Daerah LMS Taiping
25	ABA6020 T024	30	4.781572	100.777729	JKR Daerah LMS Taiping
26	ABA6020 T025	30	4.781516	100.777973	JKR Daerah LMS Taiping
27	ABA6020 T026	25	4.781446	100.778171	JKR Daerah LMS Taiping
28	ABA6020 T027	30	4.781516	100.778356	Pejabat Daerah dan Tanah Taiping
29	ABA6020 T028	35	4.781595	100.778635	Pejabat Daerah dan Tanah Taiping
30	ABA6020 T029	35	4.781669	100.778843	Pejabat Daerah dan Tanah Taiping
31	ABA6020 T030	25	4.781374	100.778293	JKR Daerah LMS Taiping
32	ABA6020 T031	30	4.781292	100.778465	JKR Daerah LMS Taiping
33	ABA6020 T032	30	4.781166	100.778737	JKR Daerah LMS Taiping
34	ABA6020 T033	30	4.781057	100.778946	JKR Daerah LMS Taiping
35	ABA6020 T034	30	4.780948	100.779179	JKR Daerah LMS Taiping
36	ABA6020 T035	30	4.780831	100.77939	JKR Daerah LMS Taiping
37	ABA6020 T036	30	4.780681	100.779686	JKR Daerah LMS Taiping
38	ABA6020 T037	30	4.78058	100.779908	JKR Daerah LMS Taiping
39	ABA6020 T038	30	4.782328	100.772317	JKR Daerah LMS Taiping
40	ABA6020 T039	30	4.782354	100.772103	JKR Daerah LMS Taiping
41	ABA6020 T040	30	4.782384	100.771896	JKR Daerah LMS Taiping
42	ABA6020 T041	30	4.782405	100.771751	JKR Daerah LMS Taiping
43	ABA6020 T042	35	4.782433	100.771586	JKR Daerah LMS Taiping

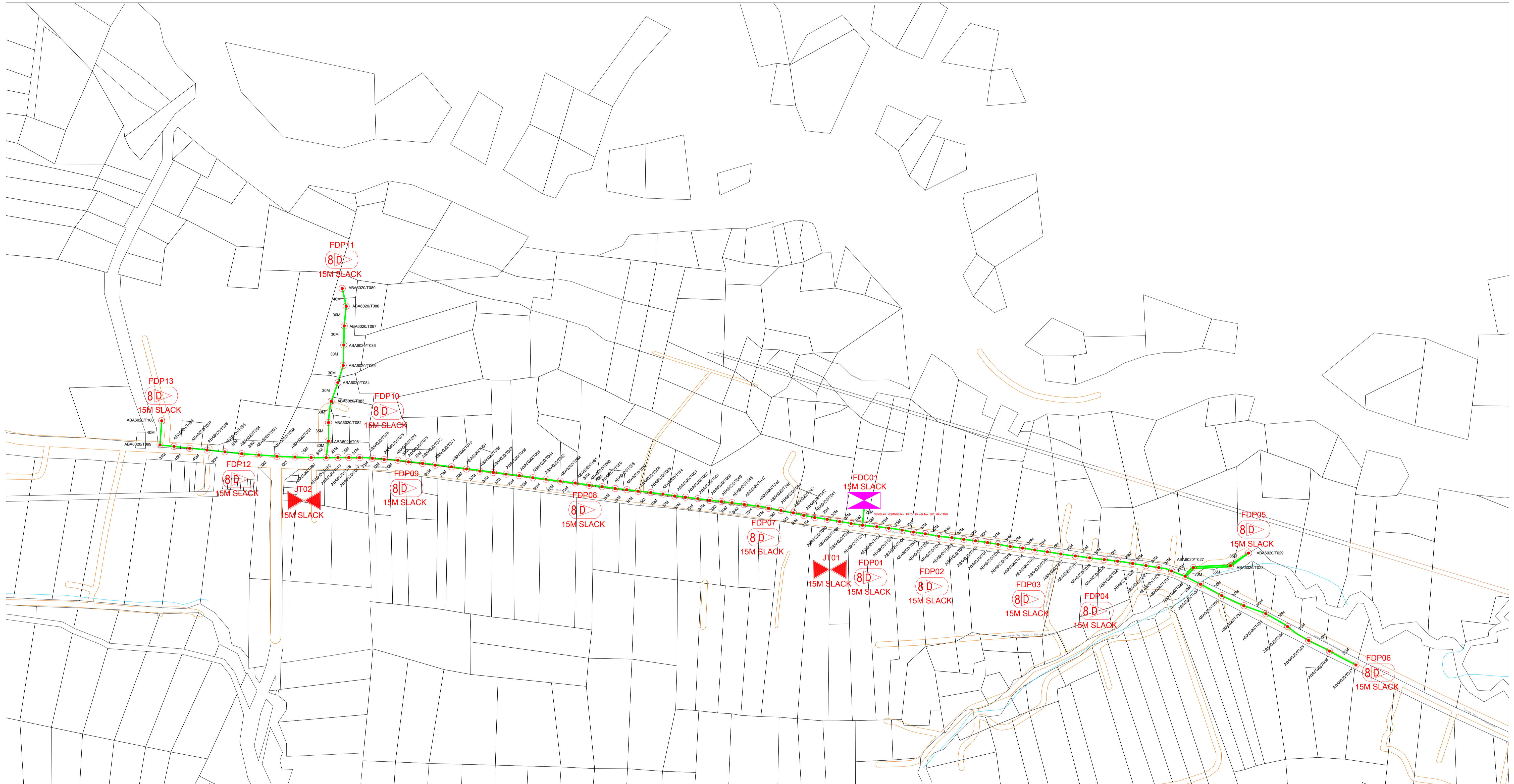
No.	Pole ID	Distance (m)	Latitude	Longitude	Local Authority
44	ABA6020 T043	35	4.782456	100.771413	JKR Daerah LMS Taiping
45	ABA6020 T044	35	4.782479	100.771247	JKR Daerah LMS Taiping
46	ABA6020 T045	35	4.782495	100.771086	JKR Daerah LMS Taiping
47	ABA6020 T046	25	4.782517	100.770926	JKR Daerah LMS Taiping
48	ABA6020 T047	25	4.782539	100.770783	JKR Daerah LMS Taiping
49	ABA6020 T048	30	4.782563	100.7706	JKR Daerah LMS Taiping
50	ABA6020 T049	30	4.782576	100.770445	JKR Daerah LMS Taiping
51	ABA6020 T050	30	4.782596	100.770252	JKR Daerah LMS Taiping
52	ABA6020 T051	30	4.782616	100.770061	JKR Daerah LMS Taiping
53	ABA6020 T052	30	4.782641	100.769898	JKR Daerah LMS Taiping
54	ABA6020 T053	30	4.782661	100.769741	JKR Daerah LMS Taiping
55	ABA6020 T054	30	4.782676	100.769546	JKR Daerah LMS Taiping
56	ABA6020 T055	30	4.782698	100.769368	JKR Daerah LMS Taiping
57	ABA6020 T056	35	4.782719	100.769156	JKR Daerah LMS Taiping
58	ABA6020 T057	35	4.782754	100.768951	JKR Daerah LMS Taiping
59	ABA6020 T058	35	4.782779	100.768754	JKR Daerah LMS Taiping
60	ABA6020 T059	35	4.782805	100.768567	JKR Daerah LMS Taiping
61	ABA6020 T060	30	4.782837	100.768341	JKR Daerah LMS Taiping
62	ABA6020 T061	30	4.782865	100.768143	JKR Daerah LMS Taiping
63	ABA6020 T062	30	4.782895	100.767923	JKR Daerah LMS Taiping
64	ABA6020 T063	40	4.78292	100.767665	JKR Daerah LMS Taiping
65	ABA6020 T064	30	4.78295	100.767449	JKR Daerah LMS Taiping
66	ABA6020 T065	30	4.782991	100.767196	JKR Daerah LMS Taiping
67	ABA6020 T066	30	4.783028	100.766962	JKR Daerah LMS Taiping
68	ABA6020 T067	30	4.783055	100.766754	JKR Daerah LMS Taiping
69	ABA6020 T068	30	4.783092	100.766542	JKR Daerah LMS Taiping
70	ABA6020 T069	30	4.783117	100.766326	JKR Daerah LMS Taiping
71	ABA6020 T070	30	4.783143	100.766116	JKR Daerah LMS Taiping
72	ABA6020 T071	35	4.783174	100.765846	JKR Daerah LMS Taiping
73	ABA6020 T072	30	4.783202	100.765569	JKR Daerah LMS Taiping
74	ABA6020 T073	35	4.783238	100.765275	JKR Daerah LMS Taiping
75	ABA6020 T074	30	4.783276	100.764989	JKR Daerah LMS Taiping
76	ABA6020 T075	30	4.78331	100.764714	JKR Daerah LMS Taiping
77	ABA6020 T076	30	4.783355	100.764419	JKR Daerah LMS Taiping
78	ABA6020 T077	35	4.783368	100.764155	JKR Daerah LMS Taiping
79	ABA6020 T078	25	4.783364	100.763992	JKR Daerah LMS Taiping
80	ABA6020 T079	25	4.78337	100.763792	JKR Daerah LMS Taiping
81	ABA6020 T080	25	4.783356	100.763613	JKR Daerah LMS Taiping
82	ABA6020 T081	30	4.783603	100.76362	Pejabat Daerah dan Tanah Taiping
83	ABA6020 T082	35	4.783887	100.763601	Pejabat Daerah dan Tanah Taiping
84	ABA6020 T083	30	4.784156	100.763606	Pejabat Daerah dan Tanah Taiping
85	ABA6020 T084	30	4.784418	100.763654	Pejabat Daerah dan Tanah Taiping
86	ABA6020 T085	30	4.784679	100.76378	Pejabat Daerah dan Tanah Taiping
87	ABA6020 T086	30	4.784906	100.763836	Pejabat Daerah dan Tanah Taiping



PROJEK PENYEDIAAN DAN PENYELENGGARAAN POINT OF PRESENCE (POP) FASA 2: HAB INFRASTRUKTUR GENTIAN OPTIK BERHAMPIRAN DENGAN SEKOLAH, KAWASAN PERINDUSTRIAN, PREMIS KERAJAAN DAN KOMUNITI SEKITARNYA OLEH KEMENTERIAN KOMUNIKASI MALAYSIA - ZON UTARA (KKMM.400-11/17/132(1))

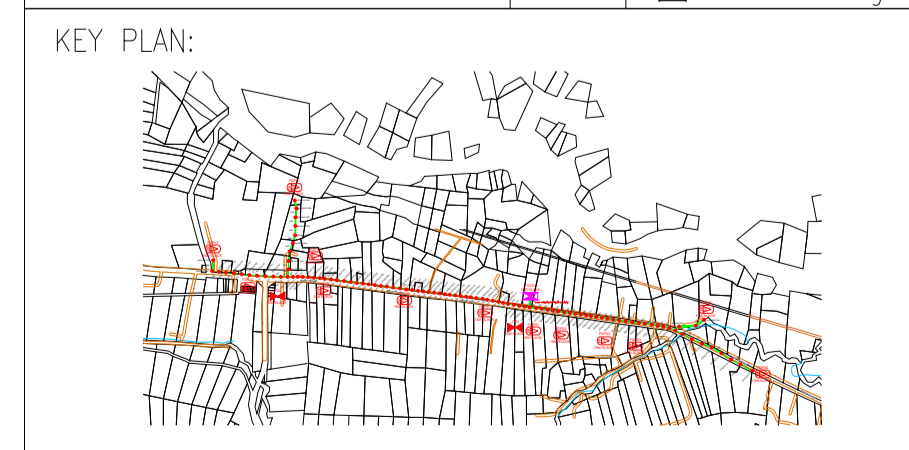


No.	Pole ID	Distance (m)	Latitude	Longitude	Local Authority
88	ABA6020 T087	30	4.785169	100.763872	Pejabat Daerah dan Tanah Taiping
89	ABA6020 T088	30	4.78545	100.763903	Pejabat Daerah dan Tanah Taiping
90	ABA6020 T089	40	4.785828	100.763956	Pejabat Daerah dan Tanah Taiping
91	ABA6020 T090	35	4.783351	100.763325	JKR Daerah LMS Taiping
92	ABA6020 T091	35	4.783362	100.763024	JKR Daerah LMS Taiping
93	ABA6020 T092	30	4.783407	100.762767	JKR Daerah LMS Taiping
94	ABA6020 T093	30	4.783423	100.762497	JKR Daerah LMS Taiping
95	ABA6020 T094	35	4.783432	100.762193	JKR Daerah LMS Taiping
96	ABA6020 T095	35	4.783474	100.761907	JKR Daerah LMS Taiping
97	ABA6020 T096	35	4.783502	100.761629	JKR Daerah LMS Taiping
98	ABA6020 T097	40	4.783526	100.761298	JKR Daerah LMS Taiping
99	ABA6020 T098	40	4.783535	100.760944	JKR Daerah LMS Taiping
100	ABA6020 T099	35	4.783541	100.760609	JKR Daerah LMS Taiping
101	ABA6020 T100	40	4.783842	100.760606	Pejabat Daerah dan Tanah Taiping



12C FOC	Installed 1:4 / 1:8 / 1:32 splitter	○	Installed Pole (9m)	s	Suspension	JB30	New Manhole (PIT)	—	Micro-Trenching (Meter)	MH1	MH NO.
24C FOC	3,200M Installed Patch Cord	●	Installed Pole (7.5M)	100	Tension	C7	New Manhole(JRC7)	—	Temporary Infra (Meter)	TKS-1	Existing TNB Pole NO.
48C FOC	FDC	1	Installed Pole (6.7M)	100	Pole Ring	—	FDP Boundary	—	Loop / Coil (Meter)	P001	New Pole NO.
96C FOC	Closure	2	Existing TNB Pole	13	FDP with (1:8) splitter	—	HDD (Meter)	#	Active Outdoor Cabinet	CL01	Closure NO.
144C FOC	Existing Closure	2	Installed Riser	13	Existing Manhole	—	Open Cut (Meter)	C01	FDC NO.	DP1	FDP NO.

ACTUAL HOMEPASS : 104



PROJECT OWNER:

KEMENTERIAN KOMUNIKASI DAN DIGITAL

MAIN CONTRACTOR:

APEX COMMUNICATIONS SDN BHD
187475-V

PRIVASAT

SUB-CONTRACTOR:

allo!
The Smarter Connection
ALLO TECHNOLOGY SDN BHD
Level 3, Left Wing,
College of Computer Science & Information Technology (CSIT)
UNITEN, 43000 Kajang, Selangor
TEL: 1 300-38-8000
FAX: (60) 3 8800 5221
E-MAIL: info@allo.my WEBSITE: HTTP://WWW.ALLO.MY

PROJECT TITLE:

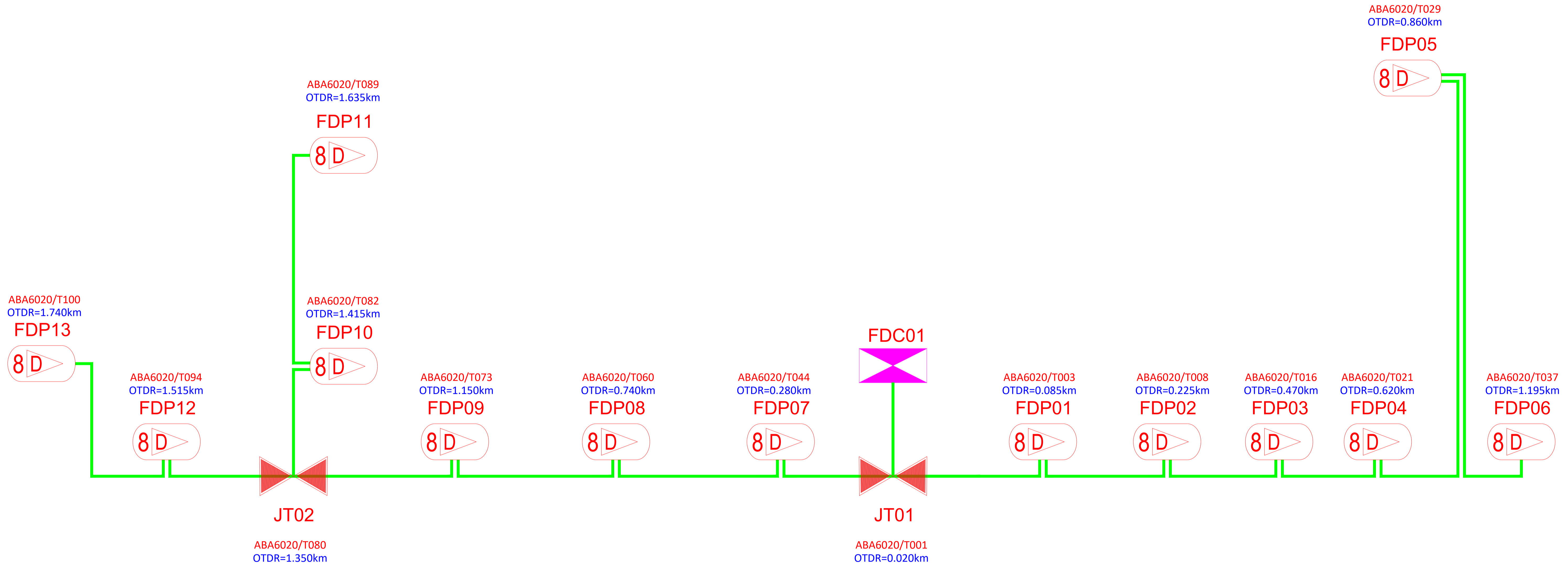
CONTRACT FOR THE PROVISION OF SUPPLY, INSTALLATION AND COMMISSIONING OF FTTX NETWORK INFRASTRUCTURE – POP2 PROJECT (D-SIDE) – ABA6020 – SEKOLAH KEBANGSAAN DATO' PANGLIMA BUKIT GANTANG

DRAWING TITLE:

GENERAL LAYOUT PERAK
KOD SEKOLAH – ABA6020
NAMA SEKOLAH – SEKOLAH KEBANGSAAN DATO' PANGLIMA BUKIT GANTANG

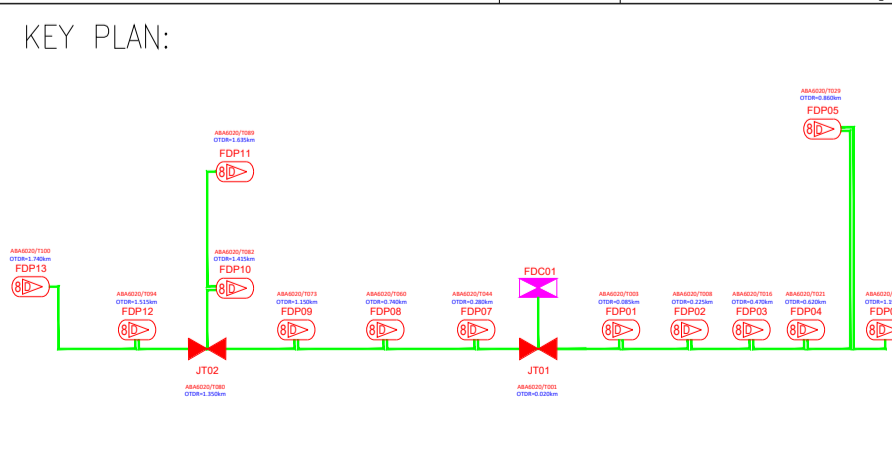
PROJECT PHASE:
PROJECT PHASE

Design By : WJ	Date : 19/12/2024
Drawn By : FAKHRUL	Scale : 1:13
Checked By :	Job Number : 46
DRAWING NUMBER : ALLO/ABA6020/2024/MFR_REV01	Sheet : 1 / 1
THIS PRINT AND ITS COPYRIGHT ARE THE PROPERTY OF ALLO TECHNOLOGY SDN BHD	
Size : A1	



12C FOC	Installed 1:4 / 1:8 / 1:32 splitter	Installed Pole (9m)	Suspension	UB30 New Manhole (PIT)	Micro-Trenching (Meter)	MH1 MH NO.
24C FOC	3,200M Installed Patch Cord	Installed Pole (7.5M)	Tension	C7 New Manhole(JRC7)	Temporary Infra (Meter)	TKS-1 Existing TNB Pole NO.
48C FOC	FDC	Installed Pole (6.7M)	Pole Ring	FDP Boundary	Loop / Coil (Meter)	P001 New Pole NO.
96C FOC	Closure	Existing TNB Pole	FDP with (1:8) splitter	HDD (Meter)	# Active Outdoor Cabinet	CL01 Closure NO.
144C FOC	Existing Closure	Installed Riser	Existing Manhole	Open Cut (Meter)	C01 FDC NO.	DP1 FDP NO.

ACTUAL HOMEPASS : 104



PROJECT OWNER:

KEMENTERIAN KOMUNIKASI DAN DIGITAL

MAIN CONTRACTOR:

APEX COMMUNICATIONS SDN BHD
187475-V
PRIVASAT

SUB-CONTRACTOR:

allo!
The Smarter Connection
ALLO TECHNOLOGY SDN BHD
Level 3, Left Wing,
College of Computer Science & Information Technology (CSIT)
UNITEN, 43000 Kajang, Selangor
TEL: 1 300-38-8000
FAX: (60) 3 8900 5221
E-MAIL : info@allo.my WEBSITE: HTTP://WWW.ALLO.MY

PROJECT TITLE:

CONTRACT FOR THE PROVISION OF SUPPLY, INSTALLATION AND COMMISSIONING OF FTTH NETWORK INFRASTRUCTURE – POP2 PROJECT (D-SIDE) – ABA6020 – SEKOLAH KEBANGSAAN DATO' PANGLIAMA BUKIT GANTANG

DRAWING TITLE:

GENERAL LAYOUT PERAK
KOD SEKOLAH – ABA6020
NAMA SEKOLAH – SEKOLAH KEBANGSAAN DATO' PANGLIAMA BUKIT GANTANG

PROJECT PHASE:

PROJECT PHASE

Design By : WJ	Date : 19/12/2024
Drawn By : FAKHRUL	Scale : 1:2
Checked By : (ALLO PIC)	Job Number : 46
DRAWING NUMBER : ALLO/ABA6020/2024/MFR_REV01	Sheet : 1/1
THIS PRINT AND ITS COPYRIGHT ARE THE PROPERTY OF ALLO TECHNOLOGY SDN BHD	
Size : A1	