

# TECHNICAL PROPOSAL

## POP2 ABA9003 SEKOLAH KEBANGSAAN KOTA BAHARU (D-SIDE)

**Company Name** : Swiftloq Sdn Bhd  
**Company Address** : No 53, Jalan SG 8/7, Taman Seri Gombak, 68100, Batu Caves, Selangor  
**Prepared By** : **Muhammad** Fakhruddin bin Sulaiman  
**Date** : 06/08/2024



**Starting Point**

Site / Boundary Name : Kota Baharu Gopeng  
 Address : SK Kota Baharu, Jalan Datuk Setia, 31600 Gopeng, Perak  
 District : Gopeng  
 Postcode : 31600  
 State : Perak  
 GPS Coordinate : 4.398403, 101.078785  
 LRD : A

**End Point**

Site / Boundary Name : Kota Baharu Gopeng  
 Address : Madrasah Al Kuppiah, Jalan Datuk Setia, 31600 Gopeng, Perak  
 District : Gopeng  
 Postcode : 31600  
 State : Perak  
 GPS Coordinate : 4.389655, 101.076720  
 LRD : B

## 1.0 WORK SUMMARY

NO	PROPOSED DISTANCE AND METHOD	UNIT	QUANTITY
1	Horizontal Directional Drilling (HDD)	m	0
2	Carriage Way Open Trench (CW)	m	0
3	Grass Verge Open Trenching (GV)	m	0
4	Micro Trenching (MT)	m	0
Total			0

NO	OTHER INFORMATION	UNIT	QUANTITY
1	Installation of Short Span ADSS Fibre Cables	m	4,515
2	Install New Pole	ea	129
3	Install New JRC7 Manhole	ea	0
4	Install GI Riser 100mm	ea	0
5	Install Fiber Distribution Point and Closure (Splicing, Termination and Testing)	ea	17
6	Estimated Time Required for Completion	days	30



SUPPLY, INSTALLATION AND COMMISSIONING OF FTTX NETWORK INFRASTRUCTURE FOR ALLO TECHNOLOGY SDN BHD POP 2 PROJECT (D-SIDE) - PMU BGJH FOR ABA9003 - SEKOLAH KEBANGSAAN KOTA BAHARU, GOPENG



## 2.0 LOCAL AUTHORITY SUMMARY

Daerah Kampar

NO	ITEMS	Owner	Quantity	Distance (m)
1	HDD	JKR	-	-
		Majlis	-	-
		Estate / Private Land	-	-
2	New Pole	JKR	45	1,575
		Majlis	-	-
		Pejabat Daerah & Tanah	84	2,940
<b>Total Distance (m)</b>				<b>4,515</b>

### 3.0 SITE PLAN (KMZ)

#### 3.1 Overview Site Area

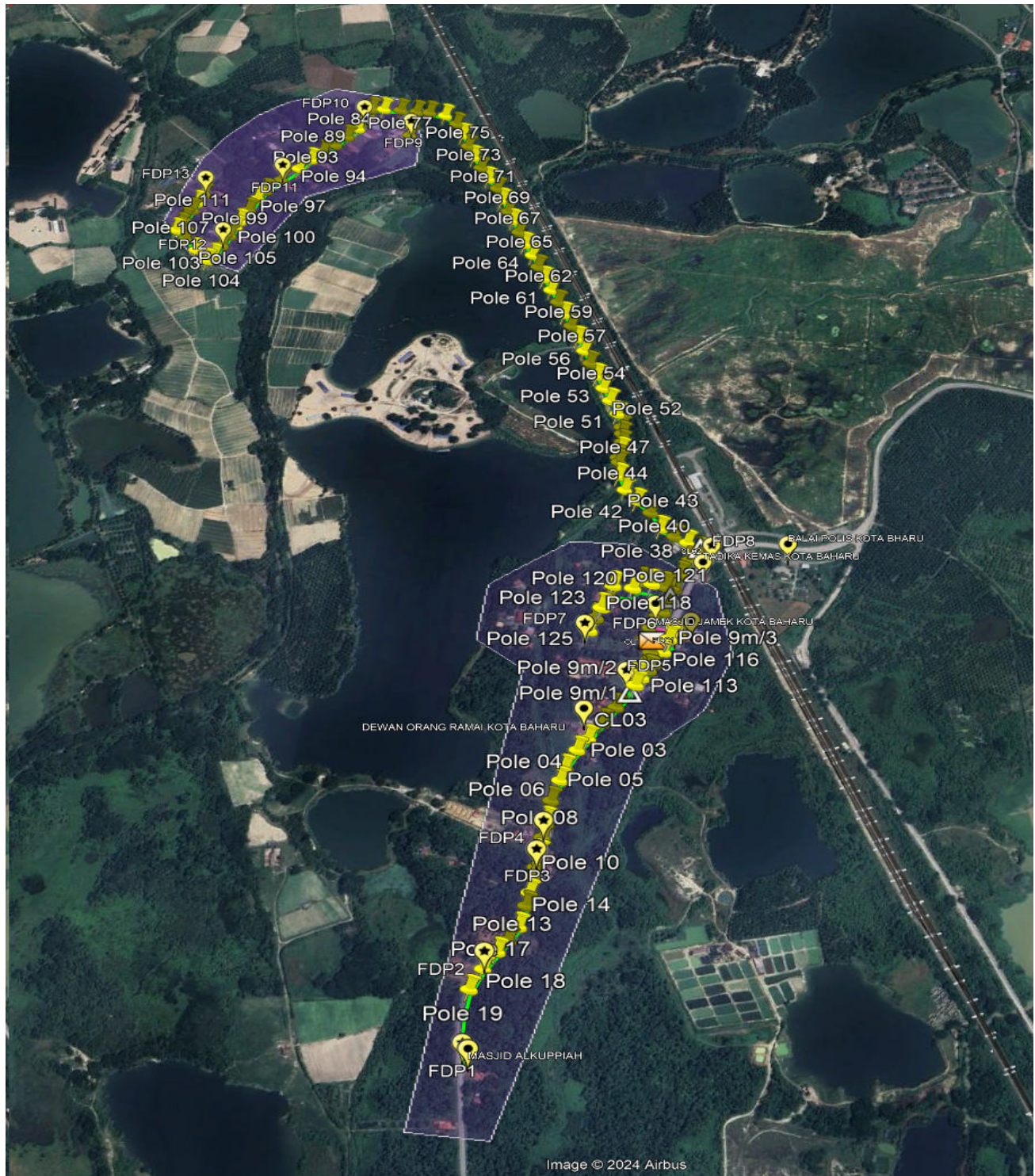
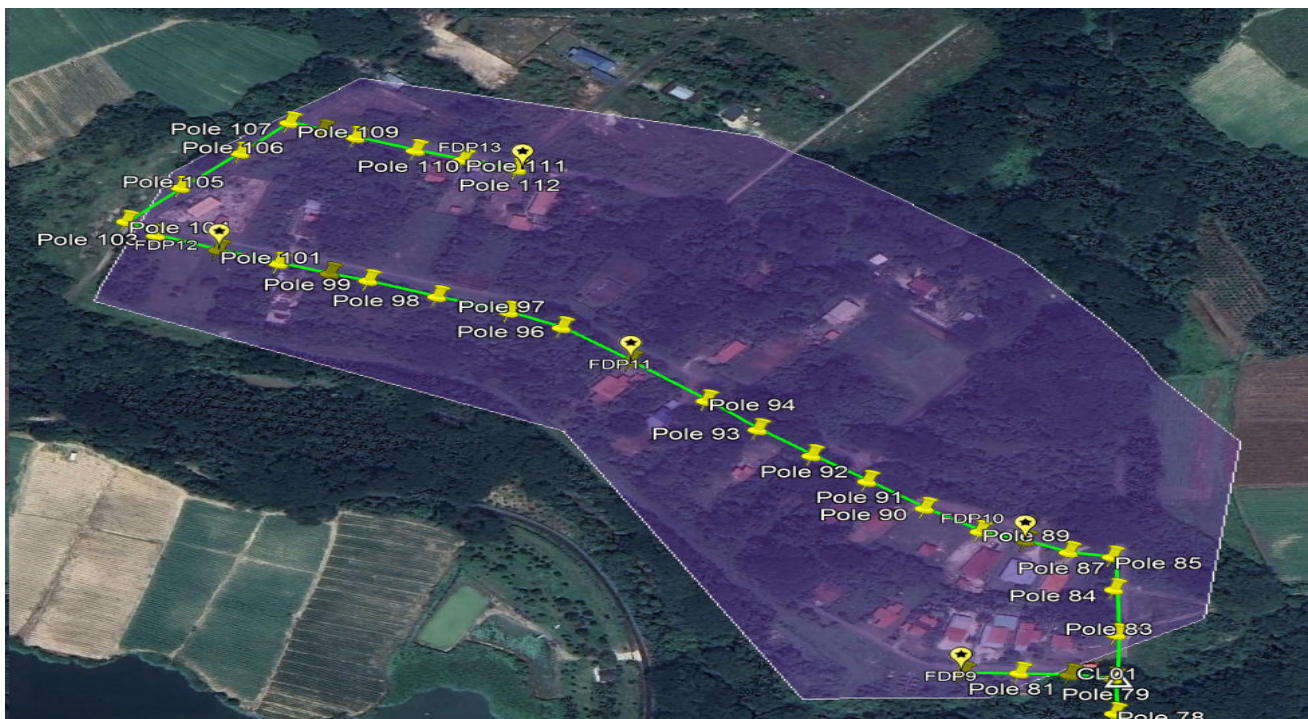
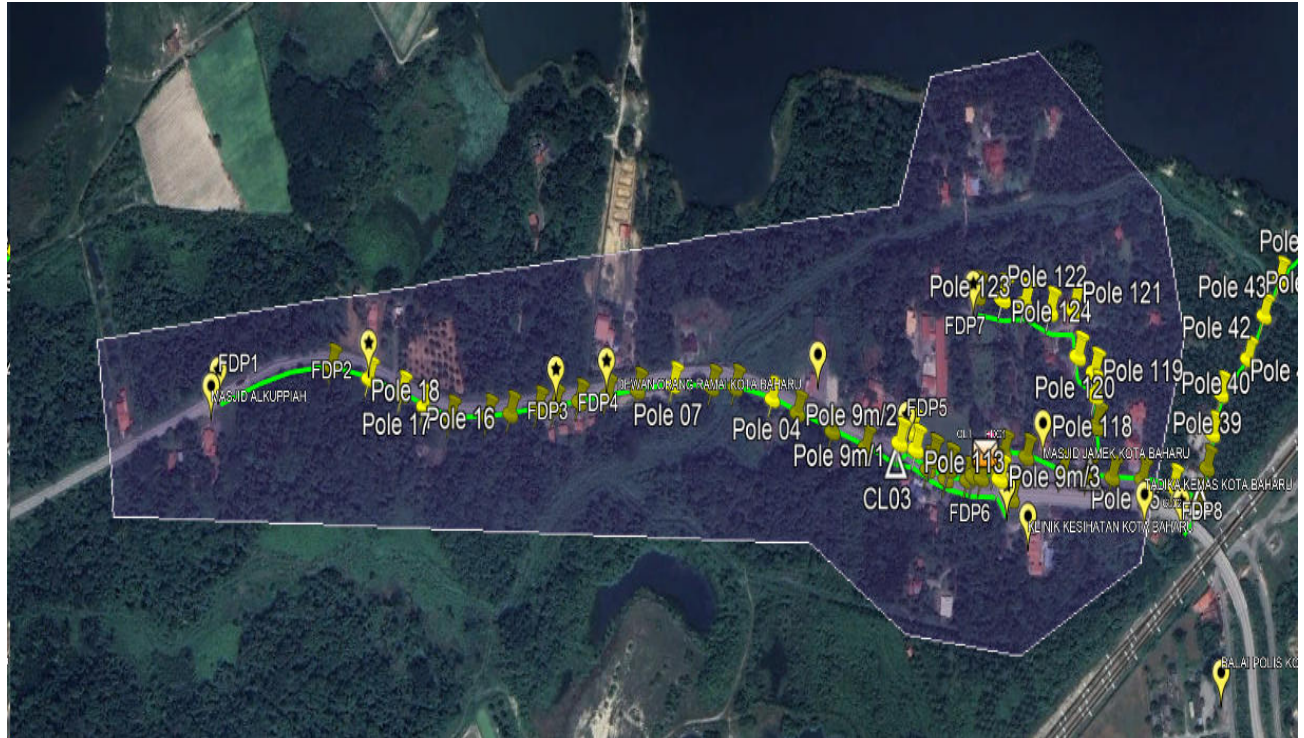
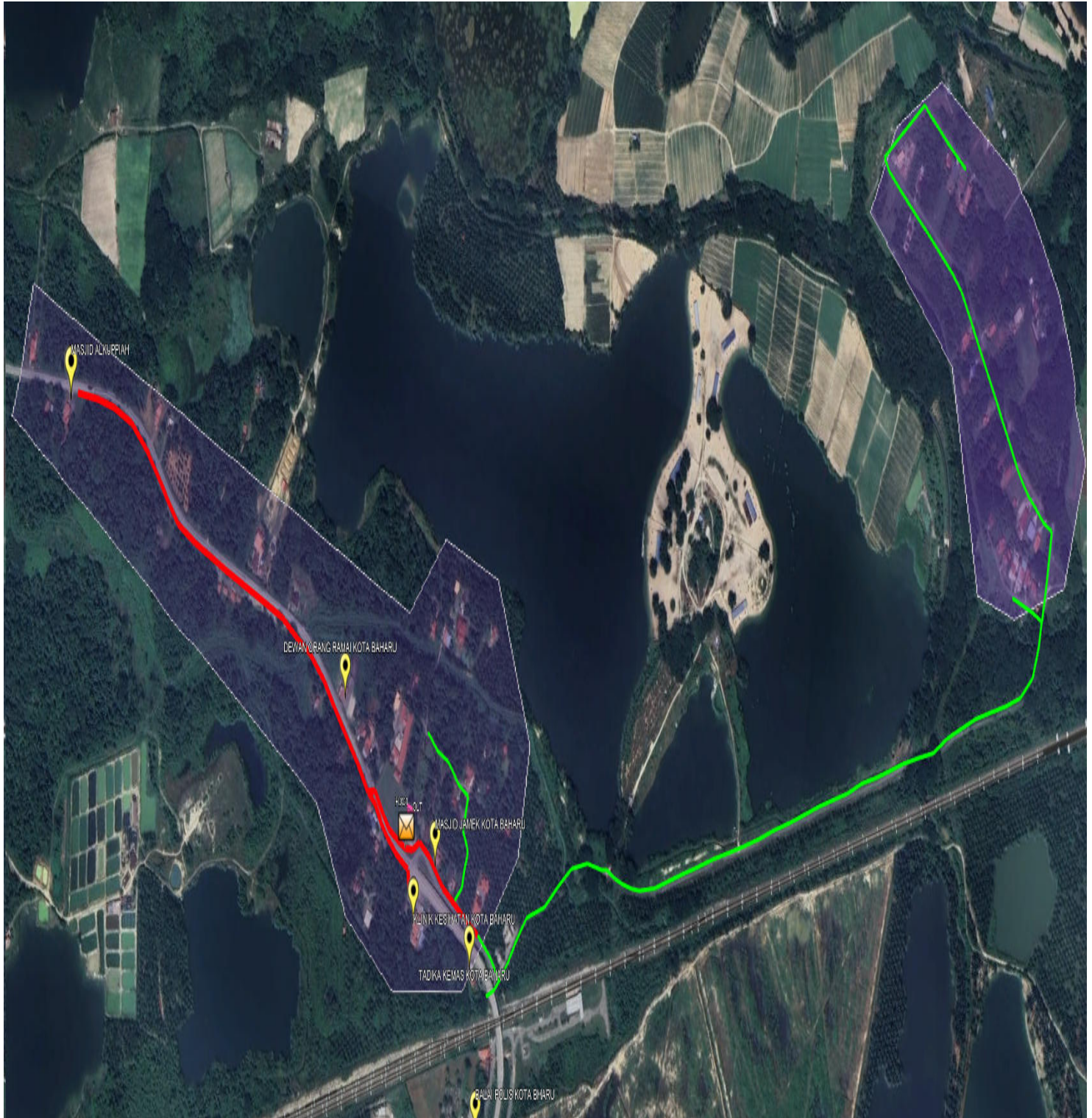


Image © 2024 Airbus



### 3.2 Site Plan - KMZ Routing (All Local Authority)



**Red Colour - JKR Road**

**Green Colour - Majlis Road**

### 3.0 PROPOSED NEW POLE

Proposed New Pole Coordinate					
No	Pole Number	Distance (m)	Latitude	Longitude	Local Authority
1	Pole 01	25	4.397136601	101.0783081	JKR Kampar
2	Pole 02	34	4.39678103	101.0781133	JKR Kampar
3	Pole 03	35	4.39640662	101.0778987	JKR Kampar
4	Pole 04	40	4.39613919	101.0777378	JKR Kampar
5	Pole 05	35	4.395733204	101.0775687	JKR Kampar
6	Pole 06	30	4.395464223	101.0775204	JKR Kampar
7	Pole 07	33	4.395027583	101.0774187	JKR Kampar
8	Pole 08	45	4.394610461	101.0773863	JKR Kampar
9	Pole 09	43	4.39425647	101.0773677	JKR Kampar
10	Pole 10	40	4.39392485	101.0773516	JKR Kampar
11	Pole 11	35	4.39364138	101.0773355	JKR Kampar
12	Pole 12	45	4.393446397	101.0773198	JKR Kampar
13	Pole 13	40	4.39243258	101.0772067	JKR Kampar
14	Pole 14	40	4.393123154	101.077299	JKR Kampar
15	Pole 15	35	4.39286047	101.0772765	JKR Kampar
16	Pole 16	40	4.39214375	101.0770619	JKR Kampar
17	Pole 17	33	4.39190841	101.0769171	JKR Kampar
18	Pole 18	37	4.39155005	101.0767293	JKR Kampar
19	Pole 19	40	4.3911382	101.0765576	JKR Kampar
20	Pole 20	36	4.390672721	101.0764883	JKR Kampar
21	Pole 21	45	4.390200273	101.0765571	JKR Kampar
22	Pole 23	47	4.398415144	101.0787854	JKR Kampar
23	Pole 24	45	4.397814173	101.0786061	JKR Kampar
24	Pole 25	45	4.3980076	101.0787186	JKR Kampar
25	Pole 26	30	4.398251475	101.0787712	JKR Kampar
26	Pole 29	35	4.398578273	101.0787534	JKR Kampar
27	Pole 30	35	4.39870653	101.078639	JKR Kampar
28	Pole 31	45	4.398959152	101.078715	JKR Kampar
29	Pole 32	45	4.399343896	101.0789141	JKR Kampar
30	Pole 33	46	4.399637286	101.0789934	JKR Kampar
31	Pole 34	46	4.399903751	101.0790564	JKR Kampar
32	Pole 35	46	4.400245462	101.0791336	JKR Kampar
33	Pole 36	45	4.40058948	101.0792554	JKR Kampar
34	Pole 37	45	4.400857158	101.0794255	JKR Kampar
35	Pole 38	45	4.400999505	101.0791808	Pejabat Daerah dan Tanah Kampar
36	Pole 39	40	4.401115431	101.0789323	Pejabat Daerah dan Tanah Kampar
37	Pole 40	35	4.40127386	101.0786444	Pejabat Daerah dan Tanah Kampar
38	Pole 41	35	4.40163222	101.0784298	Pejabat Daerah dan Tanah Kampar
39	Pole 42	35	4.401885447	101.0781335	Pejabat Daerah dan Tanah Kampar
40	Pole 43	35	4.402124098	101.0778863	Pejabat Daerah dan Tanah Kampar

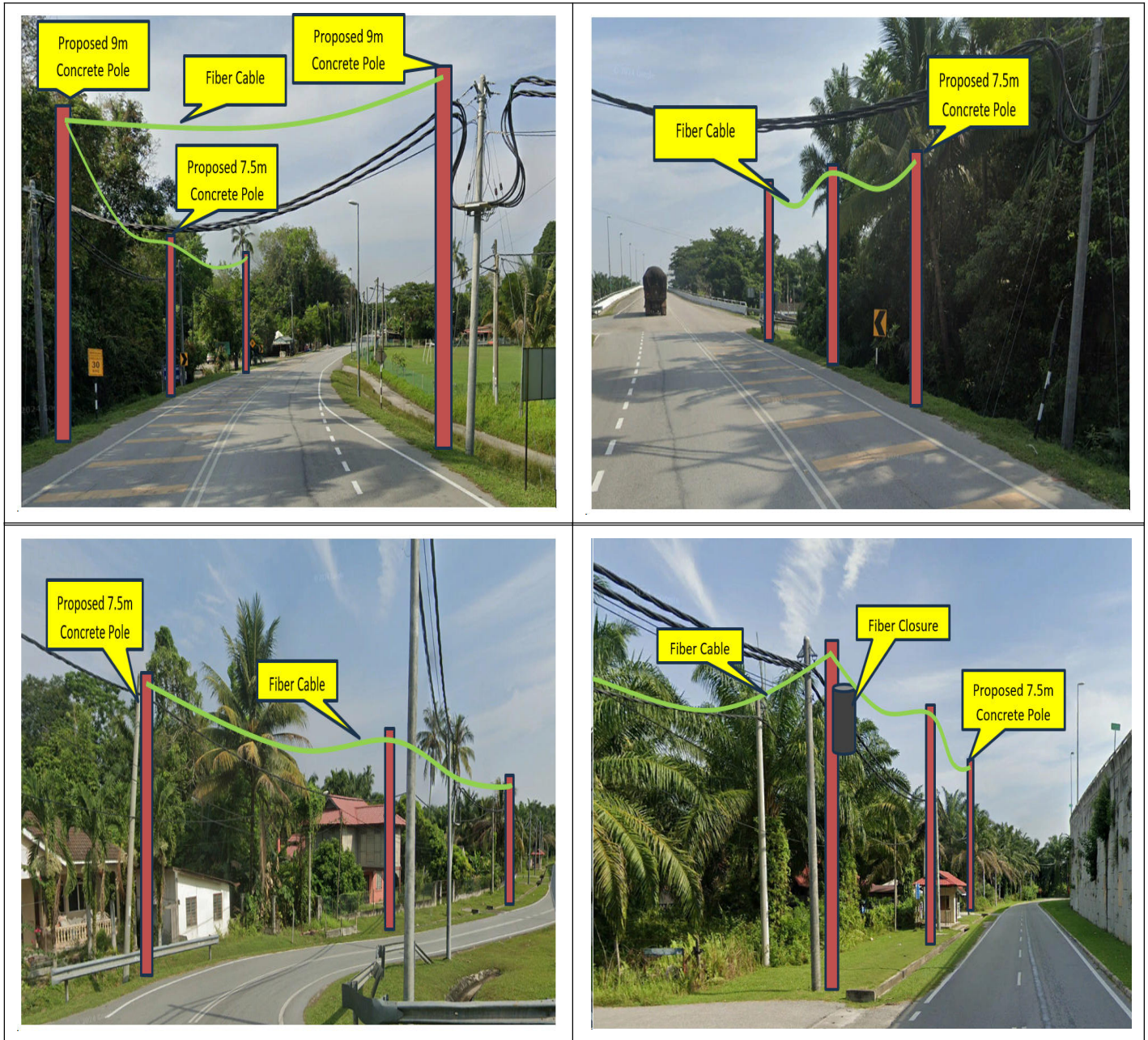
**Proposed New Pole Coordinate**

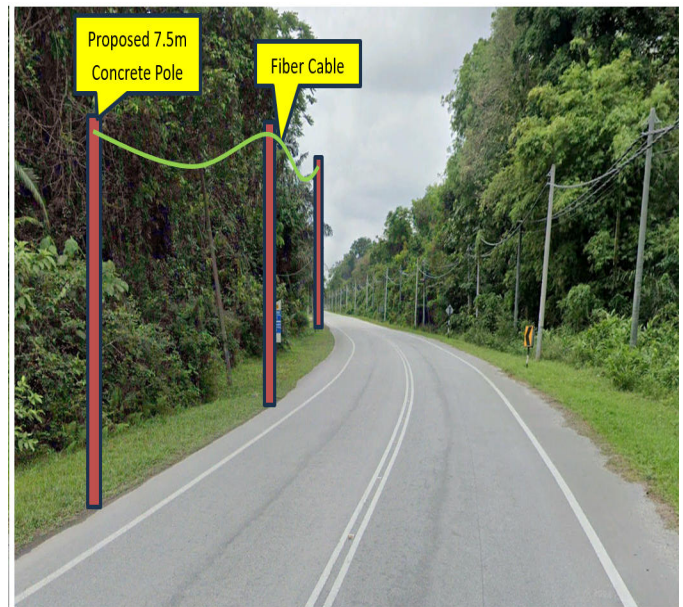
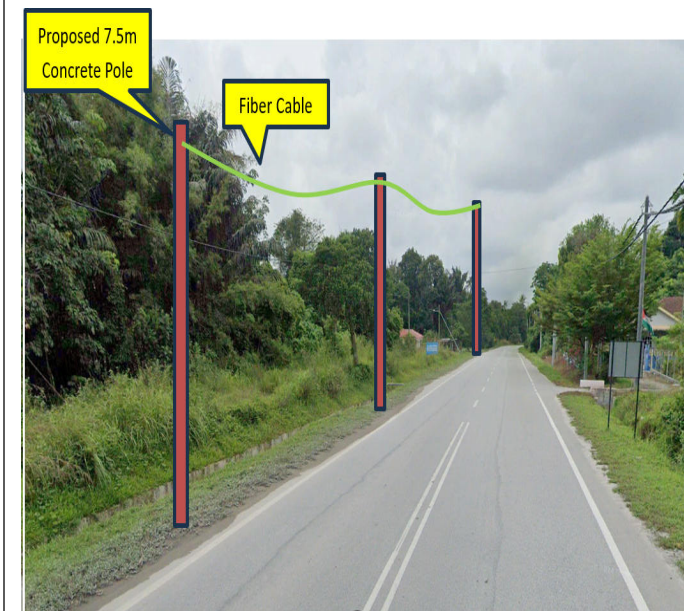
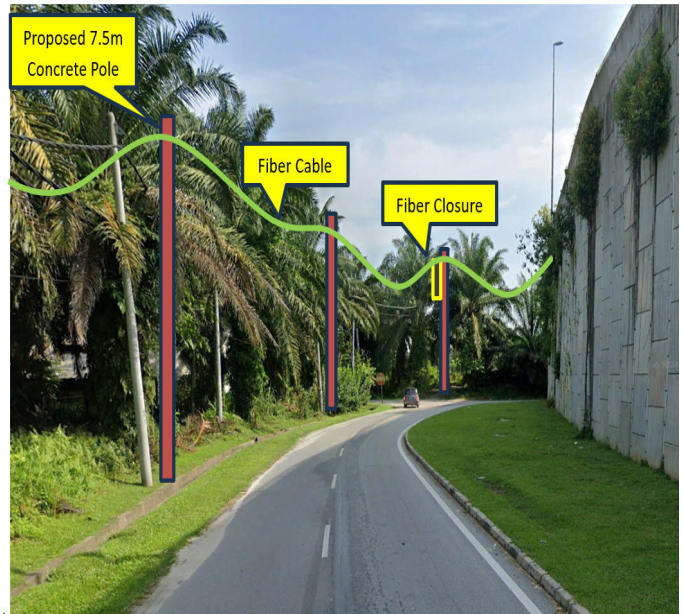
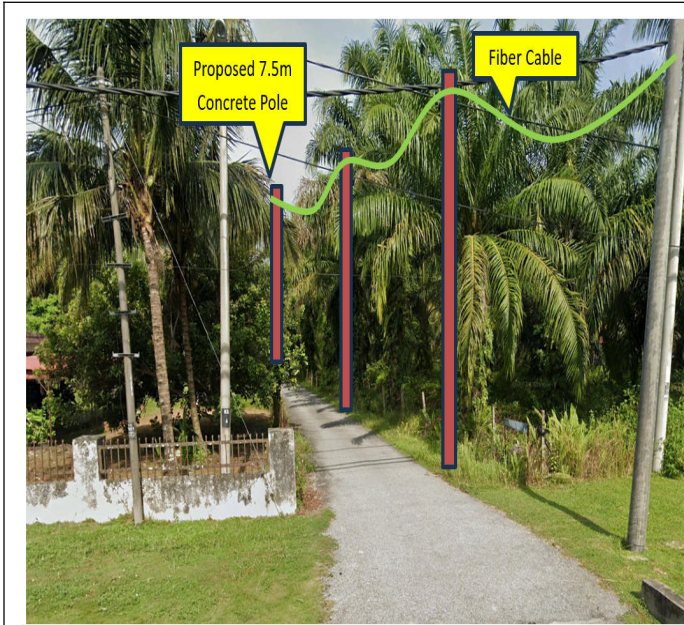
41	Pole 44	45	4.402450669	101.0777296	Pejabat Daerah dan Tanah Kampar
42	Pole 45	45	4.402780001	101.0776968	Pejabat Daerah dan Tanah Kampar
43	Pole 46	40	4.40288961	101.0776636	Pejabat Daerah dan Tanah Kampar
44	Pole 47	50	4.403093357	101.0776912	Pejabat Daerah dan Tanah Kampar
45	Pole 48	40	4.403275425	101.0776937	Pejabat Daerah dan Tanah Kampar
46	Pole 49	40	4.403490997	101.0776731	Pejabat Daerah dan Tanah Kampar
47	Pole 50	35	4.403658239	101.0776435	Pejabat Daerah dan Tanah Kampar
48	Pole 51	33	4.403983192	101.077523	Pejabat Daerah dan Tanah Kampar
49	Pole 52	32	4.404295705	101.0773456	Pejabat Daerah dan Tanah Kampar
50	Pole 53	35	4.404597887	101.0771807	Pejabat Daerah dan Tanah Kampar
51	Pole 54	35	4.404901119	101.0770201	Pejabat Daerah dan Tanah Kampar
52	Pole 55	43	4.40521087	101.0768472	Pejabat Daerah dan Tanah Kampar
53	Pole 56	45	4.405518241	101.0766922	Pejabat Daerah dan Tanah Kampar
54	Pole 57	40	4.40582778	101.0765278	Pejabat Daerah dan Tanah Kampar
55	Pole 58	40	4.40614225	101.0763598	Pejabat Daerah dan Tanah Kampar
56	Pole 59	40	4.406437343	101.0761831	Pejabat Daerah dan Tanah Kampar
57	Pole 60	35	4.406744705	101.0760191	Pejabat Daerah dan Tanah Kampar
58	Pole 61	35	4.40705248	101.0758449	Pejabat Daerah dan Tanah Kampar
59	Pole 62	36	4.407350616	101.0756627	Pejabat Daerah dan Tanah Kampar
60	Pole 63	35	4.407653839	101.0755037	Pejabat Daerah dan Tanah Kampar
61	Pole 64	43	4.407956926	101.0753471	Pejabat Daerah dan Tanah Kampar
62	Pole 65	43	4.40824469	101.0751549	Pejabat Daerah dan Tanah Kampar
63	Pole 66	45	4.408556646	101.074996	Pejabat Daerah dan Tanah Kampar
64	Pole 67	45	4.408863659	101.0748262	Pejabat Daerah dan Tanah Kampar
65	Pole 68	45	4.409101453	101.0746926	Pejabat Daerah dan Tanah Kampar
66	Pole 69	47	4.409417851	101.0745352	Pejabat Daerah dan Tanah Kampar
67	Pole 70	37	4.409730887	101.0743876	Pejabat Daerah dan Tanah Kampar
68	Pole 71	39	4.409997287	101.074159	Pejabat Daerah dan Tanah Kampar
69	Pole 72	43	4.410282382	101.0739692	Pejabat Daerah dan Tanah Kampar
70	Pole 73	40	4.410574985	101.0737774	Pejabat Daerah dan Tanah Kampar
71	Pole 74	40	4.410882546	101.0736192	Pejabat Daerah dan Tanah Kampar
72	Pole 75	43	4.411197879	101.07346	Pejabat Daerah dan Tanah Kampar
73	Pole 76	45	4.411499889	101.0732807	Pejabat Daerah dan Tanah Kampar
74	Pole 77	45	4.411719765	101.0730078	Pejabat Daerah dan Tanah Kampar
75	Pole 78	45	4.411773517	101.0726714	Pejabat Daerah dan Tanah Kampar
76	Pole 79	35	4.411766627	101.0724019	Pejabat Daerah dan Tanah Kampar
77	Pole 80	34	4.411562365	101.0723779	Pejabat Daerah dan Tanah Kampar
78	Pole 81	35	4.41132381	101.072368	Pejabat Daerah dan Tanah Kampar
79	Pole 82	34	4.411055746	101.07237	Pejabat Daerah dan Tanah Kampar
80	Pole 83	34	4.411780186	101.0720635	Pejabat Daerah dan Tanah Kampar

**Proposed New Pole Coordinate**

81	Pole 84	36	4.41176673	101.0717142	Pejabat Daerah dan Tanah Kampar
82	Pole 85	43	4.411753273	101.0714609	Pejabat Daerah dan Tanah Kampar
83	Pole 87	43	4.41154845	101.0714293	Pejabat Daerah dan Tanah Kampar
84	Pole 88	45	4.411340416	101.071344	Pejabat Daerah dan Tanah Kampar
85	Pole 89	44	4.411122794	101.0712735	Pejabat Daerah dan Tanah Kampar
86	Pole 90	44	4.410859417	101.0710966	Pejabat Daerah dan Tanah Kampar
87	Pole 91	43	4.410582647	101.0708907	Pejabat Daerah dan Tanah Kampar
88	Pole 92	40	4.410309405	101.0706926	Pejabat Daerah dan Tanah Kampar
89	Pole 93	31	4.410051988	101.0704957	Pejabat Daerah dan Tanah Kampar
90	Pole 94	33	4.409810136	101.0702759	Pejabat Daerah dan Tanah Kampar
91	Pole 95	33	4.409447359	101.0699709	Pejabat Daerah dan Tanah Kampar
92	Pole 96	35	4.409118105	101.0697163	Pejabat Daerah dan Tanah Kampar
93	Pole 97	35	4.408865478	101.0695998	Pejabat Daerah dan Tanah Kampar
94	Pole 98	35	4.408523054	101.0694834	Pejabat Daerah dan Tanah Kampar
95	Pole 99	40	4.408195271	101.0693633	Pejabat Daerah dan Tanah Kampar
96	Pole 100	40	4.408010889	101.0693117	Pejabat Daerah dan Tanah Kampar
97	Pole 101	45	4.40776784	101.0692373	Pejabat Daerah dan Tanah Kampar
98	Pole 102	45	4.407479294	101.0691376	Pejabat Daerah dan Tanah Kampar
99	Pole 103	35	4.407183565	101.0690283	Pejabat Daerah dan Tanah Kampar
100	Pole 104	35	4.407037496	101.0689202	Pejabat Daerah dan Tanah Kampar
101	Pole 105	30	4.407290361	101.0686503	Pejabat Daerah dan Tanah Kampar
102	Pole 106	33	4.40756914	101.0683769	Pejabat Daerah dan Tanah Kampar
103	Pole 107	32	4.407797646	101.068134	Pejabat Daerah dan Tanah Kampar
104	Pole 108	40	4.407955042	101.0681927	Pejabat Daerah dan Tanah Kampar
105	Pole 109	44	4.408114566	101.068246	Pejabat Daerah dan Tanah Kampar
106	Pole 110	45	4.408401708	101.0683409	Pejabat Daerah dan Tanah Kampar
107	Pole 111	45	4.408627168	101.0684092	Pejabat Daerah dan Tanah Kampar
108	Pole 112	46	4.408885596	101.0684796	Pejabat Daerah dan Tanah Kampar
109	Pole 113	32	4.397603514	101.078582	<b>JKR Kampar</b>
110	Pole 114	33	4.397782944	101.0786925	<b>JKR Kampar</b>
111	Pole 115	35	4.397955616	101.0787954	<b>JKR Kampar</b>
112	Pole 116	37	4.398223719	101.0789071	<b>JKR Kampar</b>
113	Pole 117	40	4.399702353	101.0787855	Pejabat Daerah dan Tanah Kampar
114	Pole 118	41	4.399732049	101.0785459	Pejabat Daerah dan Tanah Kampar
115	Pole 119	42	4.399754449	101.0783705	Pejabat Daerah dan Tanah Kampar
116	Pole 120	43	4.399591351	101.0782101	Pejabat Daerah dan Tanah Kampar
117	Pole 121	43	4.399614908	101.0778416	Pejabat Daerah dan Tanah Kampar
118	Pole 122	33	4.399340759	101.0778085	Pejabat Daerah dan Tanah Kampar
119	Pole 123	34	4.399043491	101.077699	Pejabat Daerah dan Tanah Kampar
120	Pole 124	34	4.398795759	101.0776151	Pejabat Daerah dan Tanah Kampar
121	Pole 125	40	4.398531071	101.0775354	Pejabat Daerah dan Tanah Kampar
122	Pole 22	46	4.389788019	101.0766129	<b>JKR Kampar</b>
123	Pole 9m/1	45	4.397430903	101.0784988	<b>JKR Kampar</b>
124	Pole 9m/2	32	4.397583928	101.0784429	<b>JKR Kampar</b>
125	Pole 9m/3	33	4.398519012	101.0789862	<b>JKR Kampar</b>
126	Pole 9m/4	33	4.398620337	101.0791585	<b>JKR Kampar</b>

**4.0 SITE PHOTOS - PROPOSED NEW POLE**





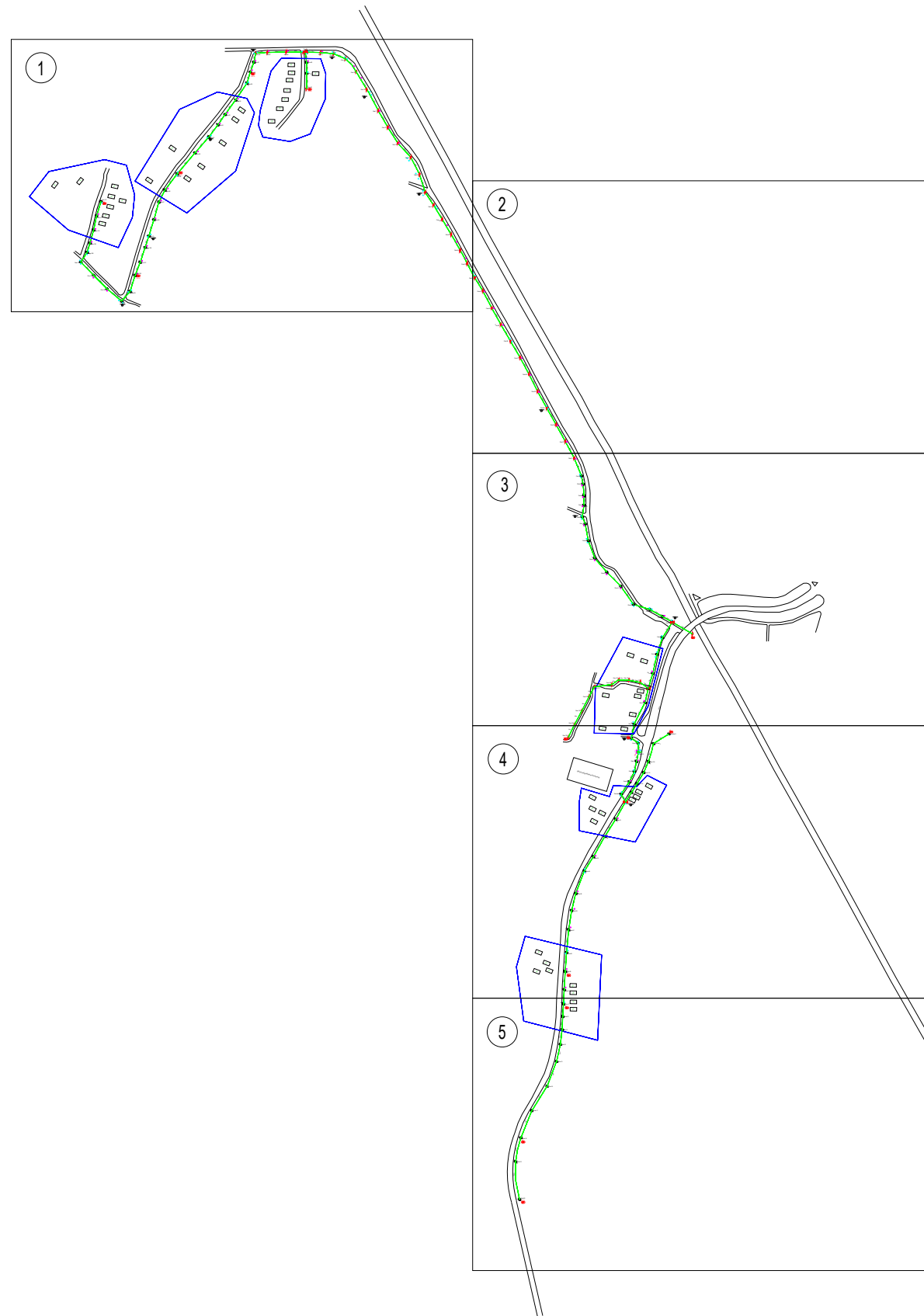


SUPPLY, INSTALLATION AND COMMISSIONING OF FTTX NETWORK INFRASTRUCTURE FOR ALLO TECHNOLOGY SDN BHD POP 2 PROJECT (D-SIDE) - PMU BGJH FOR ABA9003 - SEKOLAH KEBANGSAAN KOTA BAHARU, GOPENG



## 7.0 3<sup>rd</sup> PARTIES DEPENDENCIES

NO	LOCAL COUNCIL / AUTHORITY	REMARK
1	Pejabat Daerah dan Tanah Kampar	2,900m
2	JKR Daerah Kampar	1,450m



LEGEND																
	12C FOC	0	Installed 1:4 splitter in FDC	4		Installed Pole (9m)	0		New Manhole(JRCT)	4		Tension Small / Tension Big	182		MH NO.	0
	24C FOC	7560		15		Installed Riser	0		House Number	0		Existing Manhole	0		Existing TNB Pole NO.	0
	48C FOC	0		3		Suspension Big	0		Existing TNB Pole	158		Closure NO.	3		New Pole NO.	0
	96C FOC	0		0		Suspension Small	109		LOOP	29		FDP NO.	15			
	144C FOC	0		42		FDC	1		FDP Boundary	15		FDC NO.	1			

KEY PLAN :



PROJECT TITLE:

**D-SIDE ABA9003 SEKOLAH  
KEBANGSAAN KOTA BAHARU**

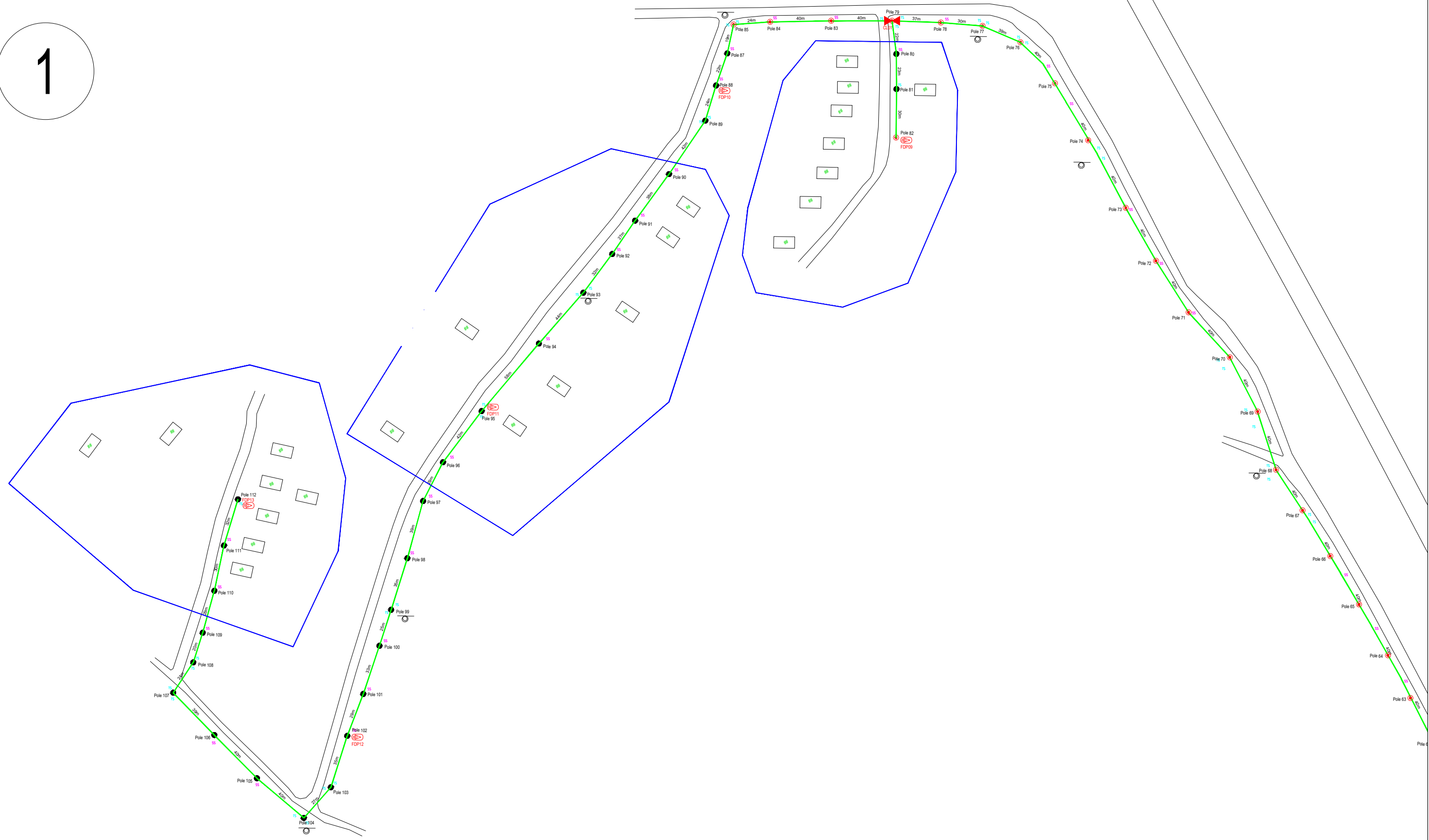
DRAWING TITLE:

**CONSTRUCTION DRAWING :  
ABA9003 SEKOLAH KEBANGSAAN KOTA  
BAHARU**

PROJECT PHASE:  
POP 2

Design By : AMIR	Date : 09/08/2024
Drawn By : AMIR	Scale : NOT TO SCALE
Checked By : DIN	Job Number : 01
DRAWING NUMBFR : ABA9003/CD/01	Sheet : SHEET
THIS PRINT AND ITS COPYRIGHT ARE THE PROPERTY OF ALLO TECHNOLOGY SDN BHD	
Size : A3	

1



LEGEND	
	12C FOC
	24C FOC
	48C FOC
	96C FOC
	144C FOC
	Installed Pole (9m)
	Installed Riser
	Suspension Big
	Suspension Small
	FDC
	New Manhole(JRCT)
	Existing Manhole
	Existing TNB Pole
	LOOP
	FDP Boundary
	Tension Small / Tension Big
	Closure NO.
	FDP NO.
	FDC NO.
	MH NO.
	Existing TNB Pole NO.
	New Pole NO.
	SEE A-A in this page
	SEE SHEET XXX

ACTUAL HOMEPASS : 61


KEY PLAN :

PROJECT OWNER :



KEMENTERIAN KOMUNIKASI DAN DIGITAL

MAIN CONTRACTOR



PRIVASAT

SUB-CONTRACTOR :



ALLO TECHNOLOGY SDN BHD  
CYBERVIEW GARDEN VILLAS  
PERSIHARAN MULTIMEDIA, CYBER 7  
63000 CYBERJAYA, SELANGOR DARUL EHSAN.  
TEL: 1 300-38-8000  
FAX: (60) 3 8800 5221  
E-MAIL : info@allo.my  
WEBSITE: HTTP://WWW.ALLO.MY

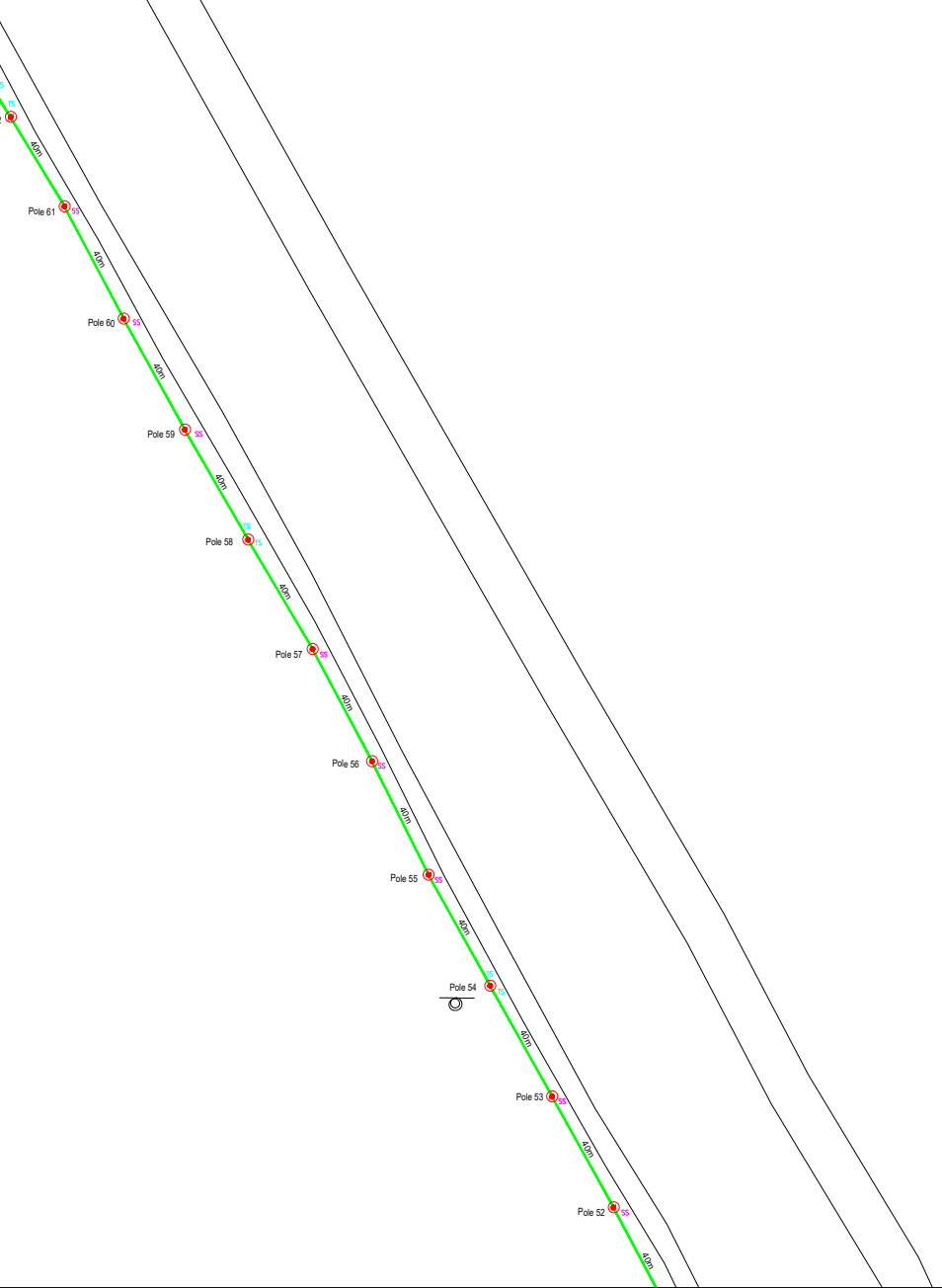
PROJECT TITLE:  
**D-SIDE ABA9003 SEKOLAH  
KEBANGSAAN KOTA BAHARU**

DRAWING TITLE:  
**CONSTRUCTION DRAWING  
LAYOUT 1 ABA9003 SEKOLAH  
KEBANGSAAN KOTA BAHARU**

PROJECT PHASE:  
POP 2

Design By : AMIR	Date : 09/08/2024
Drawn By : AMIR	Scale : NOT TO SCALE
Checked By : DIN	Job Number : 01
DRAWING NUMBFR : ABA9003/CD/01/LAYOUT01	Sheet : SHEET
THIS PRINT AND ITS COPYRIGHT ARE THE PROPERTY OF ALLO TECHNOLOGY SDN BHD	
Size : A3	

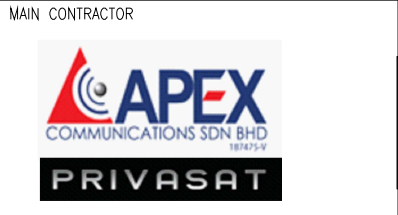
2



LEGEND	
	12C FOC
	24C FOC
	48C FOC
	96C FOC
	144C FOC
	Installed Pole (9m)
	Installed Riser
	Suspension Big
	Suspension Small
	FDC
	New Manhole(JRCT)
	House Number
	Existing TNB Pole
	LOOP
	FDP Boundary
	Tension Small / Tension Big
	Existing Manhole
	Closure NO.
	FDC NO.
	MH NO.
	Existing TNB Pole NO.
	New Pole NO.
	SEE A-A in this page
	SEE SHEET XXX

ACTUAL HOMEPASS : 61

KEY PLAN :



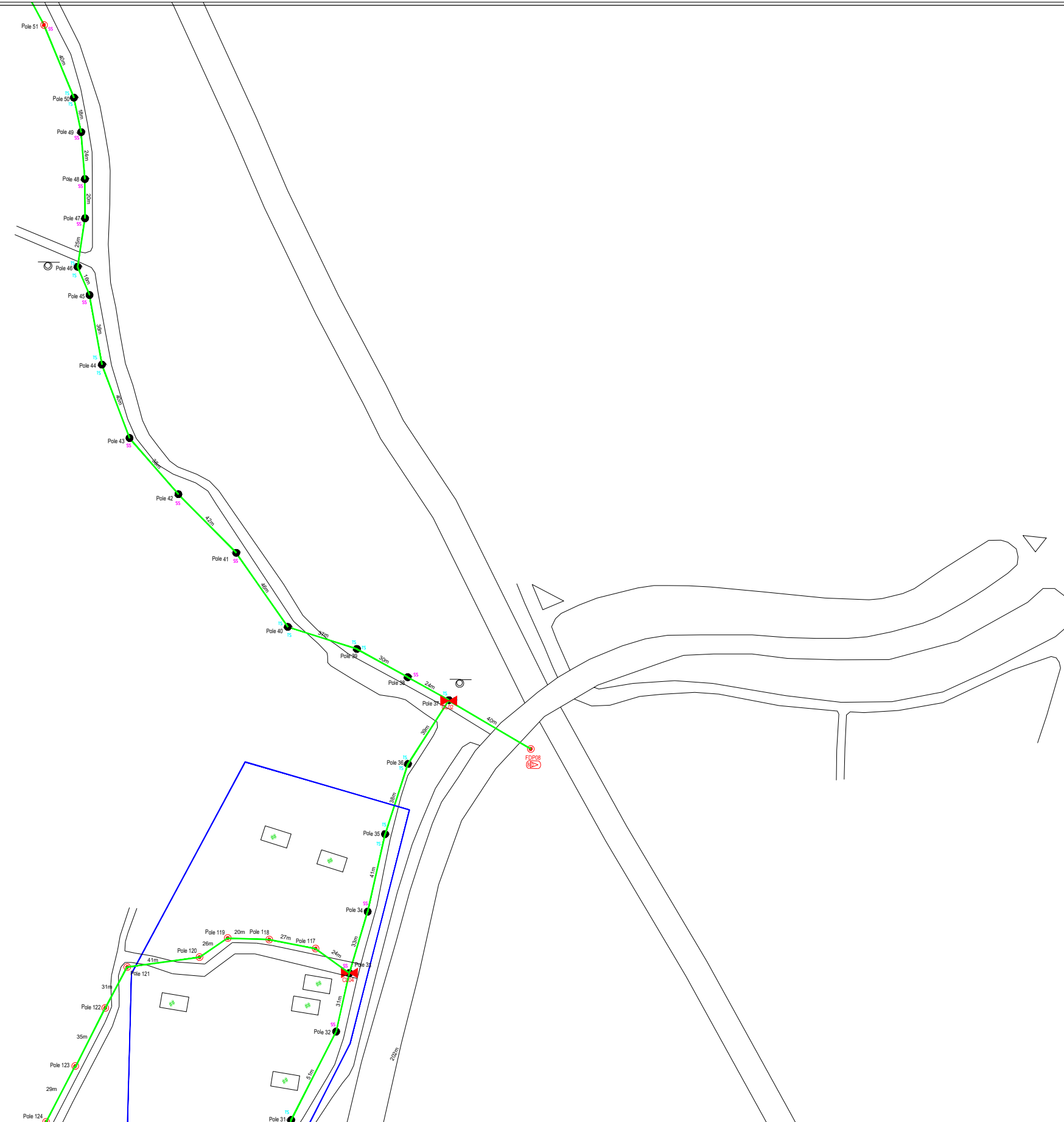
PROJECT TITLE:  
**D-SIDE ABA9003 SEKOLAH KEBANGSAAN KOTA BAHARU**

DRAWING TITLE:  
**CONSTRUCTION DRAWING LAYOUT 2 ABA9003 SEKOLAH KEBANGSAAN KOTA BAHARU**

PROJECT PHASE:  
**POP 2**

Design By : AMIR	Date : 09/08/2024
Drawn By : AMIR	Scale : NOT TO SCALE
Checked By : DIN	Job Number : 01
DRAWING NUMBFR : ABA9003/CD/01/LAYOUT02	Sheet : SHEET
THIS PRINT AND ITS COPYRIGHT ARE THE PROPERTY OF ALLO TECHNOLOGY SDN BHD	
Size : A3	

3



ACTUAL HOMEPASS : 61

LEGEND	
	12C FOC
	24C FOC
	48C FOC
	96C FOC
	144C FOC
	Installed Pole (9m)
	Installed Riser
	Suspension Big
	Suspension Small
	FDC
	New Manhole(JRCT)
	Existing TNB Pole
	LOOP
	FDP Boundary
	Tension Small / Tension Big
	Existing Manhole
	Closure NO.
	FDP NO.
	FDC NO.
	MH NO.
	Existing TNB Pole NO.
	New Pole NO.
	SEE A-A in this page
	SEE SHEET XXX

KEY PLAN :

PROJECT OWNER :



MAIN CONTRACTOR :



SUB-CONTRACTOR :



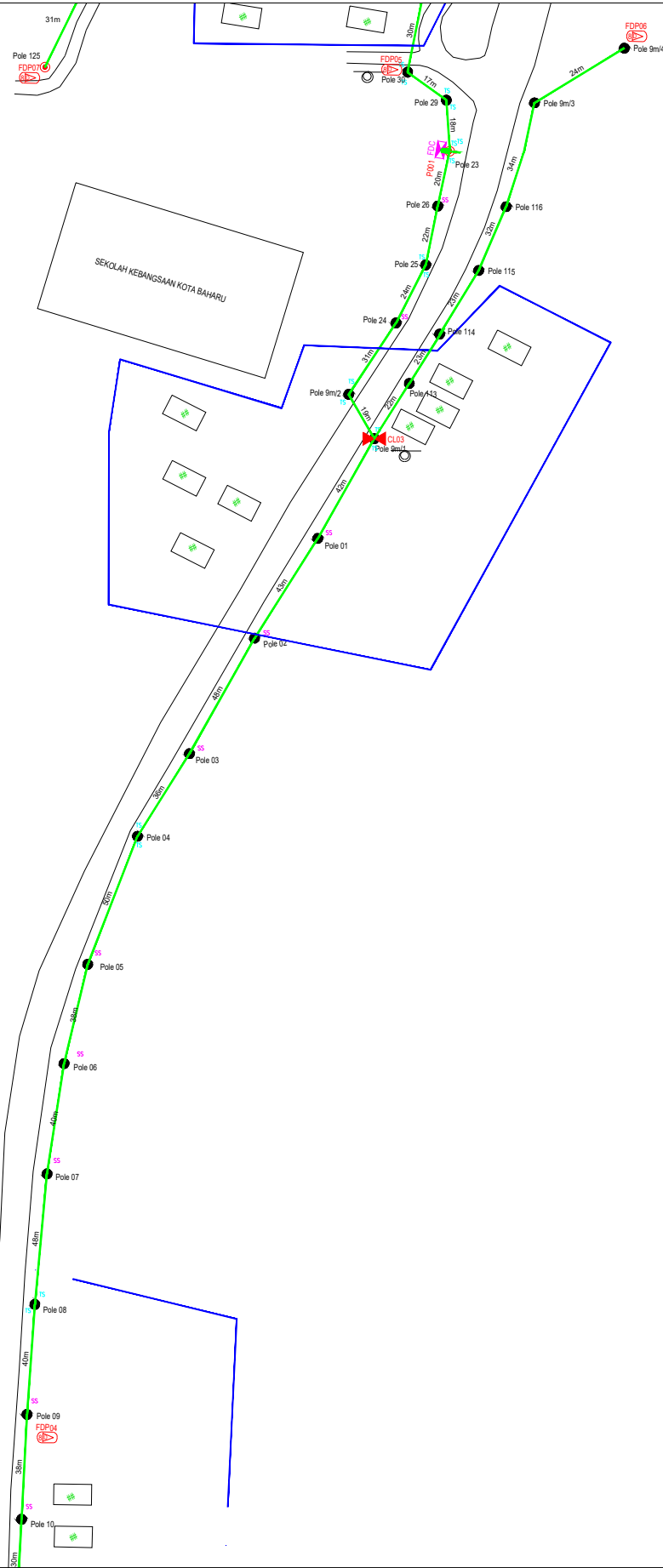
PROJECT TITLE:  
**D-SIDE ABA9003 SEKOLAH KEBANGSAAN KOTA BAHARU**

DRAWING TITLE:  
**CONSTRUCTION DRAWING LAYOUT 3 ABA9003 SEKOLAH KEBANGSAAN KOTA BAHARU**

PROJECT PHASE:  
**POP 2**

Design By : AMIR	Date : 09/08/2024
Drawn By : AMIR	Scale : NOT TO SCALE
Checked By : DIN	Job Number : 01
DRAWING NUMBFR : ABA9003/CD/01/LAYOUT03	Sheet : SHEET
THIS PRINT AND ITS COPYRIGHT ARE THE PROPERTY OF ALLO TECHNOLOGY SDN BHD	
Size : A3	

4



LEGEND	
	12C FOC
	24C FOC
	48C FOC
	96C FOC
	144C FOC
	Installed Pole (9m)
	Installed Riser
	Suspension Big
	Suspension Small
	FDC
	New Manhole (JRC7)
	Existing TNB Pole
	LOOP
	FDP Boundary
	Existing Manhole
	Closure NO.
	FDP NO.
	FDC NO.
	MH1 MH NO.
	TKS-1 Existing TNB Pole NO.
	P001 New Pole NO.
	SEE A-A in this page
	SEE SHEET XXX

ACTUAL HOMEPASS : 61

KEY PLAN :



PROJECT TITLE:  
**D-SIDE ABA9003 SEKOLAH KEBANGSAAN KOTA BAHARU**

DRAWING TITLE:  
**CONSTRUCTION DRAWING LAYOUT 4 ABA9003 SEKOLAH KEBANGSAAN KOTA BAHARU**

PROJECT PHASE:  
**POP 2**

Design By : AMIR	Date : 09/08/2024
Drawn By : AMIR	Scale : NOT TO SCALE
Checked By : DIN	Job Number : 01
DRAWING NUMBR : ABA9003/CD/01/LAYOUT04	Sheet : SHEET
THIS PRINT AND ITS COPYRIGHT ARE THE PROPERTY OF ALLO TECHNOLOGY SDN BHD	
Size : A3	

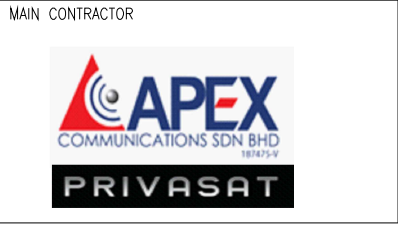
5



LEGEND																	
	12C FOC	0	Installed 1:4 splitter in FDC	4		Installed Pole (9m)	0	New Manhole(JRCT7)	4		Tension Small / Tension Big	182		MH NO.	0		
	24C FOC	7560		FDP with (1:8) splitter	15		Installed Riser	0		House Number	0		Existing Manhole	0		Existing TNB Pole NO.	0
	48C FOC	0		Closure	3		Suspension Big	0		Existing TNB Pole	158		Closure NO.	3		New Pole NO.	0
	96C FOC	0		New Manhole (PIT)	0		Suspension Small	109		LOOP	29		FDP NO.	15		SEE A-A in this page	0
	144C FOC	0		Installed Pole (7.5M)	42		FDC	1		FDP Boundary	15		FDC NO.	1		SEE SHEET XXX	0

ACTUAL HOMEPASS : 61

KEY PLAN :

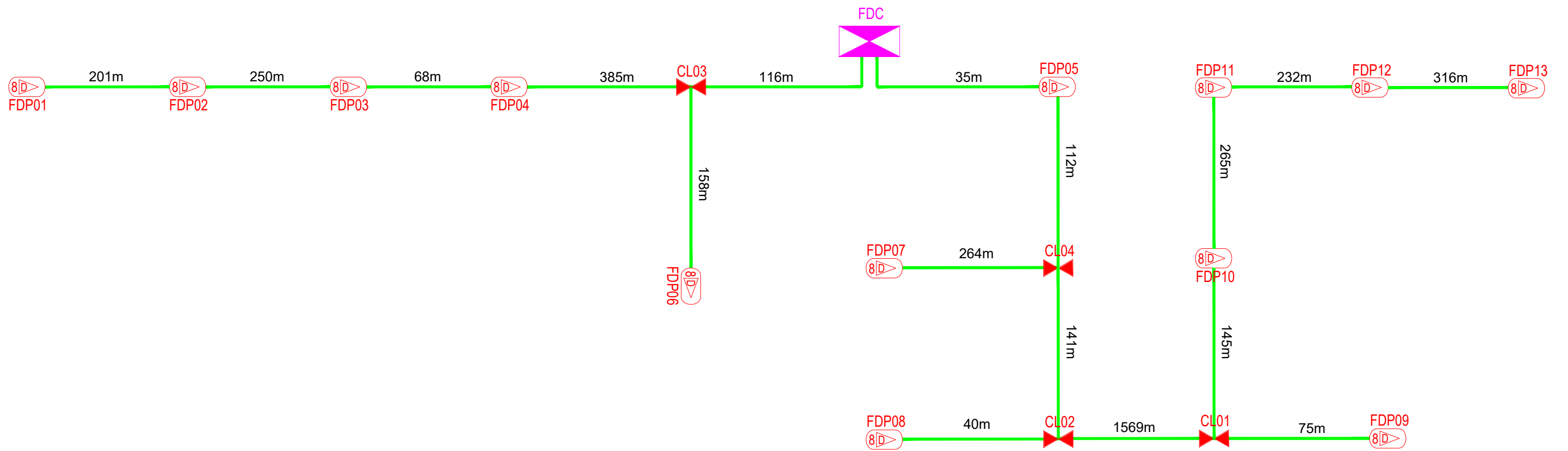


PROJECT TITLE:  
**D-SIDE ABA9003 SEKOLAH  
KEBANGSAAN KOTA BAHARU**

DRAWING TITLE:  
**CONSTRUCTION DRAWING  
LAYOUT 5 ABA9003 SEKOLAH  
KEBANGSAAN KOTA BAHARU**

PROJECT PHASE:  
**POP 2**

Design By : AMIR	Date : 09/08/2024
Drawn By : AMIR	Scale : NOT TO SCALE
Checked By : DIN	Job Number : 01
DRAWING NUMBFR : ABA9003/CD/01/LAYOUT05	Sheet : SHEET 1
THIS PRINT AND ITS COPYRIGHT ARE THE PROPERTY OF ALLO TECHNOLOGY SDN BHD	
Size : A3	



LEGEND											
12C FOC	0	Installed 1:4 splitter in FDC	4	Installed Pole (9m)	0	New Manhole(JRC7)	4	TS / TB Tension Small / Tension Big	182	MH1 MH NO.	0
24C FOC	7560	FDP with (1:8) splitter	15	Installed Riser	0	# House Number	0	Existing Manhole	0	TKS-1 Existing TNB Pole NO.	0
48C FOC	0	Closure	3	Suspension Big	0	Existing TNB Pole	158	C01 Closure NO.	3	P001 New Pole NO.	0
96C FOC	0	New Manhole (PIT)	0	Suspension Small	109	LOOP	29	FDP1 FDP NO.	15	SEE A-A in this page	A
144C FOC	0	Installed Pole (7.5M)	42	FDC	1	FDP Boundary	15	FDC FDC NO.	1	SEE SHEET XXX	A

ACTUAL HOMEPASS : 61

KEY PLAN :

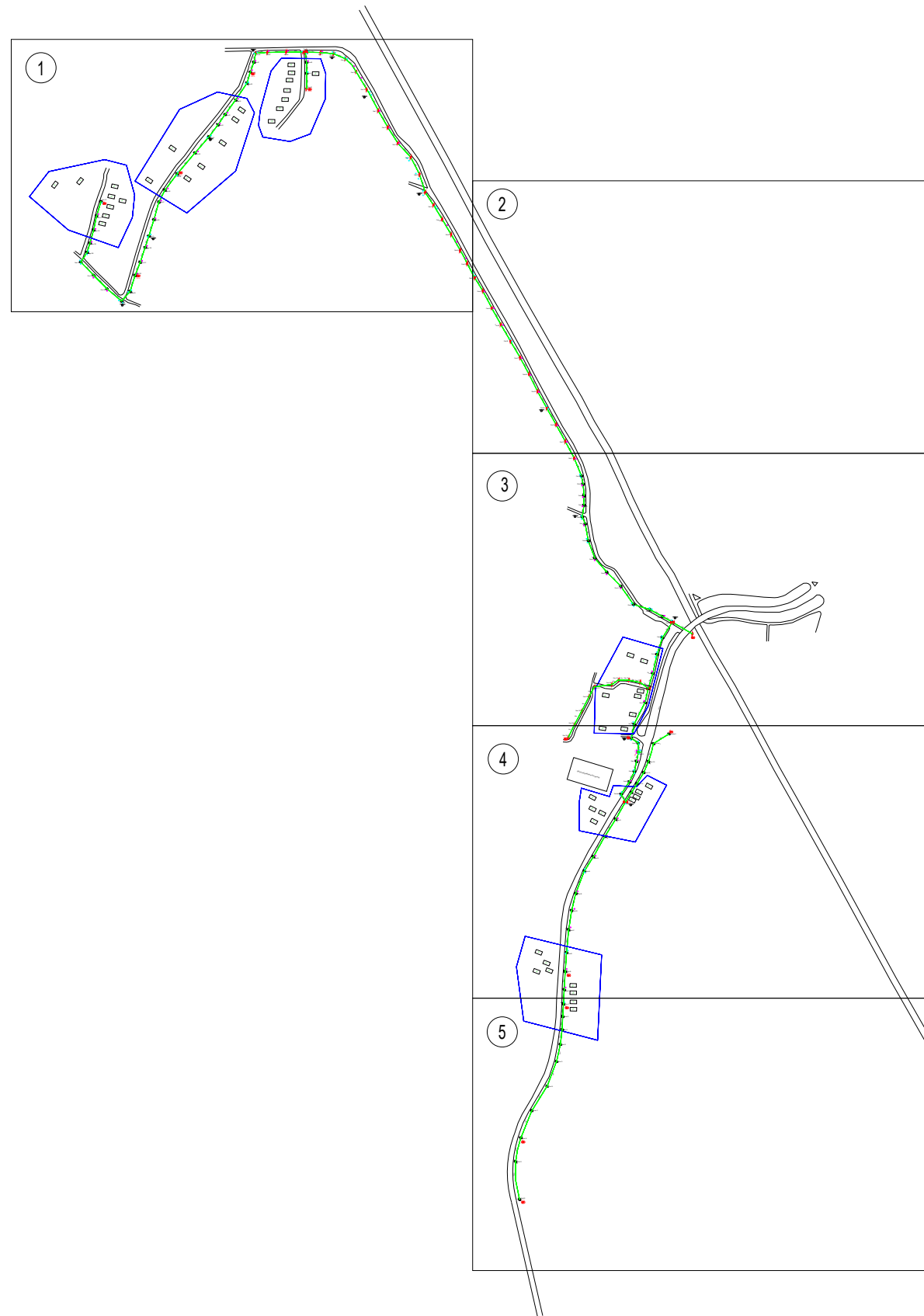


PROJECT TITLE:  
**D-SIDE ABA9003 SEKOLAH  
 KEBANGSAAN KOTA BAHARU**

DRAWING TITLE:  
**SINGLE LINE DIAGRAM ABA9003  
 SEKOLAH KEBANGSAAN KOTA  
 BAHARU**

PROJECT PHASE:  
 POP 2

Design By : AMIR	Date : 09/08/2024
Drawn By : AMIR	Scale : NOT TO SCALE
Checked By : DIN	Job Number : 01
DRAWING NUMBR : ABA9003/SLD/01	Sheet : SHEET
THIS PRINT AND ITS COPYRIGHT ARE THE PROPERTY OF ALLO TECHNOLOGY SDN BHD	
Size : A3	



LEGEND																
	12C FOC	0	Installed 1:4 splitter in FDC	4		Installed Pole (9m)	0		New Manhole(JRCT)	4		Tension Small / Tension Big	182		MH NO.	0
	24C FOC	7560		15		Installed Riser	0		House Number	0		Existing Manhole	0		Existing TNB Pole NO.	0
	48C FOC	0		3		Suspension Big	0		Existing TNB Pole	158		Closure NO.	3		New Pole NO.	0
	96C FOC	0		0		Suspension Small	109		LOOP	29		FDP NO.	15		SEE A-A in this page	(A)
	144C FOC	0		42		FDC	1		FDP Boundary	15		FDC NO.	1		SEE SHEET XXX	(A)

KEY PLAN :



PROJECT TITLE:

**D-SIDE ABA9003 SEKOLAH KEBANGSAAN KOTA BAHARU**

DRAWING TITLE:

**CONSTRUCTION DRAWING :  
ABA9003 SEKOLAH KEBANGSAAN KOTA BAHARU**

PROJECT PHASE:  
POP 2

Design By : AMIR	Date : 09/08/2024
Drawn By : AMIR	Scale : NOT TO SCALE
Checked By : DIN	Job Number : 01
DRAWING NUMBFR : ABA9003/CD/01	Sheet : SHEET
THIS PRINT AND ITS COPYRIGHT ARE THE PROPERTY OF ALLO TECHNOLOGY SDN BHD	
Size : A3	