

## TECHNICAL PROPOSAL

### POP2 ABD0076 - SEKOLAH JENIS KEBANGSAAN (TAMIL) BHARATHY (D-SIDE)

Company Name	:	STEADCOM SDN BHD
Company Address	:	11-3, Jalan Puteri 2/6, Bandar Puteri, 47100 Puchong, Selangor
Prepared By	:	Ashraff Azizi
Date	:	27/12/2024



**POINT A**

**POINT B**

**Starting Point**

Site / Boundary Name	:	SEKOLAH JENIS KEBANGSAAN (TAMIL) BHARATHY
Address	:	SJKT Bharathy, Simpang Empat, 36400 Hutan Melintang Perak
District	:	Hutan Melintang
Postcode	:	36400
State	:	Perak
GPS Coordinate	:	4.265790, 101.237322
LRD	:	A

**End Point**

Site / Boundary Name	:	SEKOLAH JENIS KEBANGSAAN (TAMIL) BHARATHY
Address	:	Kampung Sungai Lah, 36400 Hutan Melintang Perak
District	:	Hutan Melintang
Postcode	:	36400
State	:	Perak
GPS Coordinate	:	4.267595, 101.239661
LRD	:	B

### Work Summary

No	Proposed Distance and Method	Unit	Qty
1	Horizontal Directional Drilling (HDD)	m	<b>220</b>
2	Carriage Way Open trench (CW)	m	<b>0</b>
3	Grass Verge Open Trenching (GV)	m	<b>0</b>
4	Micro trenching (MT)	m	<b>0</b>
	Total		<b>220</b>

	Other Information	Unit	Qty
1	Proposed Manhole	EA	<b>4</b>
2	Proposed Pole	EA	<b>76</b>
3	Joint Closure	EA	<b>4</b>
4	Estimated time required for completion	Days	<b>30</b>

### Local Authority Summary

1. Majlis Daerah Tapah

Bil	Items	Owner	Quantity	Distance(m)
1	HDD	JKR	4	220m
		Majlis	-	-
		Estate / Private Land	-	-
2	New Pole	JKR	19	712m
		Majlis	57	1815m
		Estate / Private Land	-	-
3	Existing TNB Pole	JKR	-	-
		Majlis	-	-
		Estate / Private Land	-	-
Total				2240m

Site Plan – KMZ (Overview site area)

Proposed FDP and Closure



Proposed New Pole



**Site Plan – KMZ Routing (All Local Authority)**



**Green Colour – JKR Batang Padang**

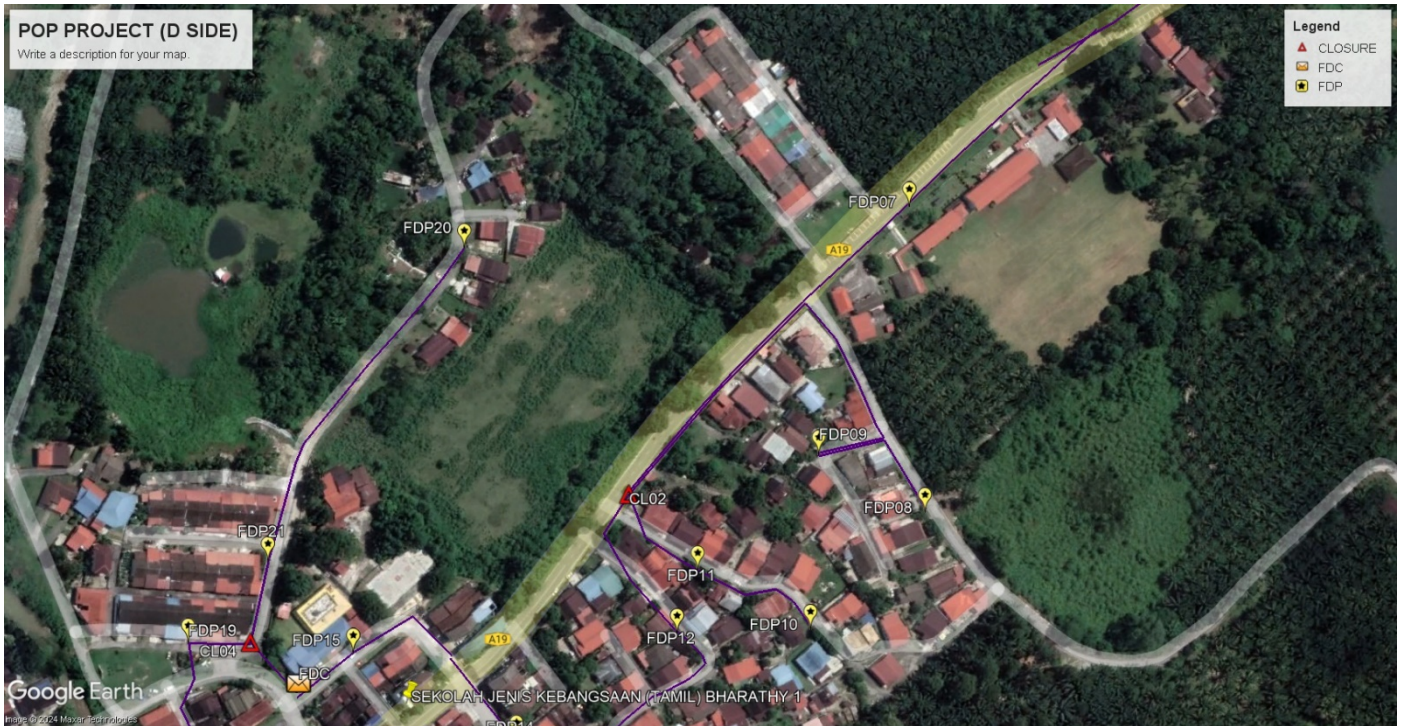
**Red Colour – Majlis Daerah Tapah**

Site Plan – KMZ Routing (All site area)

Route 1



Route 1.1



Route 1.2

**Site Plan – KMZ Routing (Proposed new Pole)**



**Proposed New Pole Lat & Long Table**

No.	Label	Pole & Manhole ID	Latitude	Longitude	Local Authority
1	OLT/FDC	T059	4.265564	101.237044	Majlis Daerah Tapah
2	FDP01	T001	4.271909	101.244112	Majlis Daerah Tapah
3	FDP02	T003	4.272586	101.244355	Majlis Daerah Tapah
4	FDP03	T007	4.272791	101.243893	Majlis Daerah Tapah
5	FDP04	T010	4.271874	101.243574	Majlis Daerah Tapah
6	FDP05	T017	4.272035	101.242947	Majlis Daerah Tapah
7	FDP06	T020	4.271050	101.242543	Majlis Daerah Tapah
8	FDP07	T030	4.268060	101.240158	JKR Batang Padang
9	FDP08	T033	4.266505	101.240238	Majlis Daerah Tapah
10	FDP09	T035	4.266798	101.239696	Majlis Daerah Tapah
11	FDP10	T041	4.265911	101.239654	Majlis Daerah Tapah
12	FDP11	T044	4.266210	101.239079	Majlis Daerah Tapah
13	FDP12	T048	4.265890	101.238974	Majlis Daerah Tapah
14	FDP13	T054	4.264790	101.238597	Majlis Daerah Tapah
15	FDP14	T055	4.265348	101.238155	Majlis Daerah Tapah
16	FDP15	T058	4.265790	101.237322	Majlis Daerah Tapah
17	FDP16	T061	4.263980	101.237124	Majlis Daerah Tapah
18	FDP17	T062	4.263930	101.237624	Majlis Daerah Tapah
19	FDP18	T065	4.264707	101.237029	Majlis Daerah Tapah
20	FDP19	T070	4.265840	101.236481	Majlis Daerah Tapah
21	FDP20	T076	4.267849	101.237888	Majlis Daerah Tapah
22	FDP21	T071	4.266256	101.236888	Majlis Daerah Tapah
23	CL01	T016	4.270207	101.242875	JKR Batang Padang
24	CL02	T040	4.266597	101.238729	JKR Batang Padang
25	CL03	MH03	4.265085	101.238376	Majlis Daerah Tapah
26	CL04	T060	4.265843	101.236800	Majlis Daerah Tapah

**Overall Pole (Proposed New)**

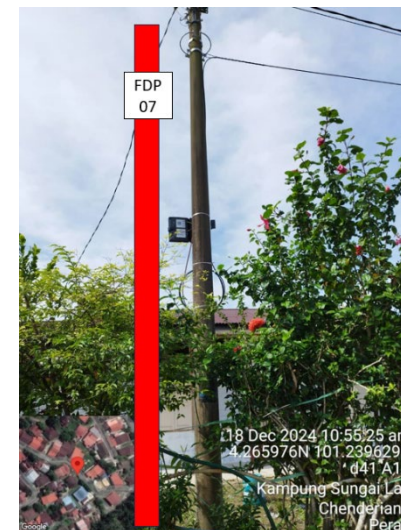
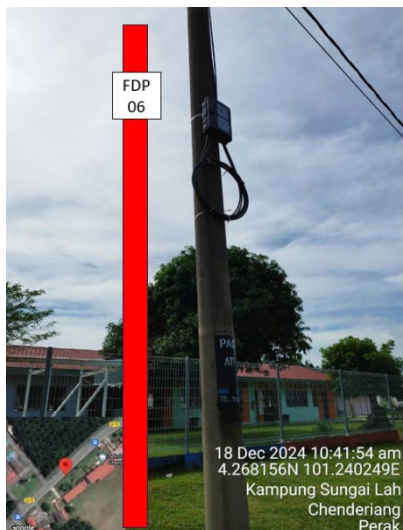
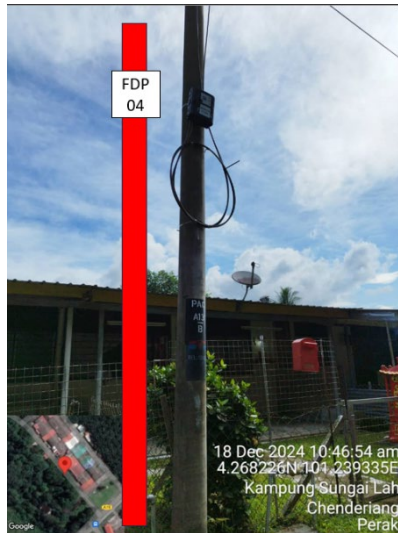
No.	Pole & Manhole ID	Distance	Latitude	Longitude	Local Authority
1	T001	40	4.271911	101.244116	Majlis Daerah Tapah
2	T002	40	4.272256	101.244237	Majlis Daerah Tapah
3	T003	40	4.272590	101.244355	Majlis Daerah Tapah
4	T004	40	4.272952	101.244471	Majlis Daerah Tapah
5	T005	40	4.273088	101.244271	Majlis Daerah Tapah
6	T006	40	4.273141	101.243998	Majlis Daerah Tapah
7	T007	40	4.272803	101.243887	Majlis Daerah Tapah
8	T008	40	4.272466	101.243773	Majlis Daerah Tapah
9	T009	40	4.272184	101.243680	Majlis Daerah Tapah
10	T010	40	4.271879	101.243571	Majlis Daerah Tapah
11	T011	40	4.271554	101.243457	Majlis Daerah Tapah
12	T012	40	4.271208	101.243423	Majlis Daerah Tapah
13	T013	40	4.270942	101.243661	JKR Batang Padang
14	T014	40	4.270675	101.243408	JKR Batang Padang
15	T015	40	4.270428	101.243139	JKR Batang Padang
16	T016	40	4.270198	101.242869	JKR Batang Padang
17	T017	40	4.272040	101.242947	Majlis Daerah Tapah
18	T018	40	4.271669	101.242879	Majlis Daerah Tapah
19	T019	40	4.271331	101.242793	Majlis Daerah Tapah
20	T020	40	4.271060	101.242550	Majlis Daerah Tapah
21	T021	40	4.270724	101.242394	Majlis Daerah Tapah
22	T022	40	4.270422	101.242591	Majlis Daerah Tapah
23	T023	40	4.269966	101.242606	JKR Batang Padang
24	T024	40	4.269739	101.242332	JKR Batang Padang
25	T025	40	4.269533	101.242037	JKR Batang Padang
26	T026	40	4.269346	101.241718	JKR Batang Padang
27	T027	40	4.269149	101.241422	JKR Batang Padang
28	T028	40	4.268960	101.241118	JKR Batang Padang
29	T029	40	4.268316	101.240415	JKR Batang Padang
30	T030	40	4.268065	101.240150	JKR Batang Padang
31	T031	40	4.267812	101.239889	JKR Batang Padang
32	T032	40	4.267564	101.239636	JKR Batang Padang
33	T033	40	4.266505	101.240238	Majlis Daerah Tapah
34	T034	40	4.266879	101.240030	Majlis Daerah Tapah
35	T035	40	4.266803	101.239704	Majlis Daerah Tapah
36	T036	40	4.267286	101.239835	Majlis Daerah Tapah
37	T037	40	4.267294	101.239343	JKR Batang Padang
38	T038	40	4.267025	101.239076	JKR Batang Padang
39	T039	40	4.266822	101.238914	JKR Batang Padang
40	T040	40	4.266596	101.238730	JKR Batang Padang
41	T041	40	4.265911	101.239654	Majlis Daerah Tapah
42	T042	40	4.266100	101.239501	Majlis Daerah Tapah
43	T043	40	4.266088	101.239317	Majlis Daerah Tapah

44	T044	40	4.266212	101.239072	Majlis Daerah Tapah
45	T045	40	4.266377	101.238819	Majlis Daerah Tapah
46	T046	40	4.266390	101.238593	JKR Batang Padang
47	T047	40	4.266159	101.238731	Majlis Daerah Tapah
48	T048	40	4.265890	101.238974	Majlis Daerah Tapah
49	T049	40	4.265718	101.239123	Majlis Daerah Tapah
50	T050	40	4.265588	101.238936	Majlis Daerah Tapah
51	T051	40	4.265436	101.238699	Majlis Daerah Tapah
52	T052	40	4.265255	101.238619	Majlis Daerah Tapah
53	T053	40	4.265085	101.238374	Majlis Daerah Tapah
54	T054	40	4.264788	101.238596	Majlis Daerah Tapah
55	T055	40	4.265353	101.238153	Majlis Daerah Tapah
56	T056	40	4.265770	101.237821	Majlis Daerah Tapah
57	T057	40	4.265962	101.237627	Majlis Daerah Tapah
58	T058	40	4.265799	101.237327	Majlis Daerah Tapah
59	T059	40	4.265583	101.237036	Majlis Daerah Tapah
60	T060	40	4.265843	101.236800	Majlis Daerah Tapah
61	T061	40	4.263990	101.237139	Majlis Daerah Tapah
62	T062	40	4.263933	101.237627	Majlis Daerah Tapah
63	T063	40	4.264206	101.237405	Majlis Daerah Tapah
64	T064	40	4.264460	101.237206	Majlis Daerah Tapah
65	T065	40	4.264707	101.237029	Majlis Daerah Tapah
66	T066	40	4.264918	101.236822	Majlis Daerah Tapah
67	T067	40	4.265154	101.236643	Majlis Daerah Tapah
68	T068	40	4.265517	101.236444	Majlis Daerah Tapah
69	T069	40	4.265652	101.236490	Majlis Daerah Tapah
70	T070	40	4.265840	101.236481	Majlis Daerah Tapah
71	T071	40	4.266256	101.236888	Majlis Daerah Tapah
72	T072	40	4.266703	101.236983	Majlis Daerah Tapah
73	T073	40	4.267026	101.237163	Majlis Daerah Tapah
74	T074	40	4.267312	101.237401	Majlis Daerah Tapah
75	T075	40	4.267582	101.237648	Majlis Daerah Tapah
76	T076	40	4.267849	101.237888	Majlis Daerah Tapah
77	MH01	0	4.268962	101.241116	JKR Batang Padang
78	MH02	120	4.268323	101.240420	JKR Batang Padang
79	MH03	0	4.265084	101.238376	Majlis Daerah Tapah
80	MH04	100	4.265778	101.237826	Majlis Daerah Tapah

Site Photos – Proposed to install pole



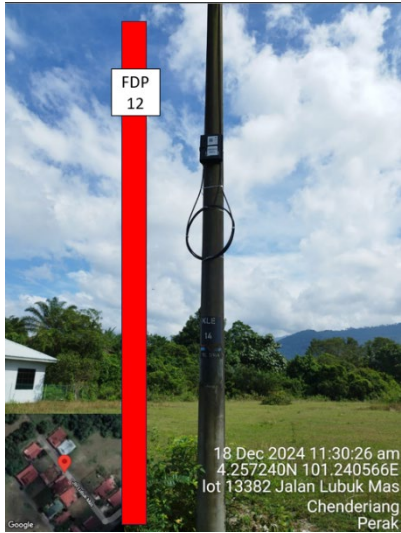
PROJEK PENYEDIAAN DAN PENYELENGGARAAN POINT OF PRESENCE (POP) FASA 2: HAB INFRASTRUKTUR GENTIAN OPTIK BERHAMPIRAN DENGAN SEKOLAH, KAWASAN PERINDUSTRIAN, PREMIS KERAJAAN DAN KOMUNITI SEKITARNYA OLEH KEMENTERIAN KOMUNIKASI MALAYSIA - ZON UTARA (KKMM.400-11/17/132(1))



PROJEK PENYEDIAAN DAN PENYELENGGARAAN POINT OF PRESENCE (POP) FASA 2: HAB INFRASTRUKTUR GENTIAN OPTIK BERHAMPIRAN DENGAN SEKOLAH, KAWASAN PERINDUSTRIAN, PREMIS KERAJAAN DAN KOMUNITI SEKITARNYA OLEH KEMENTERIAN KOMUNIKASI MALAYSIA - ZON UTARA (KKMM.400-11/17/132(1))



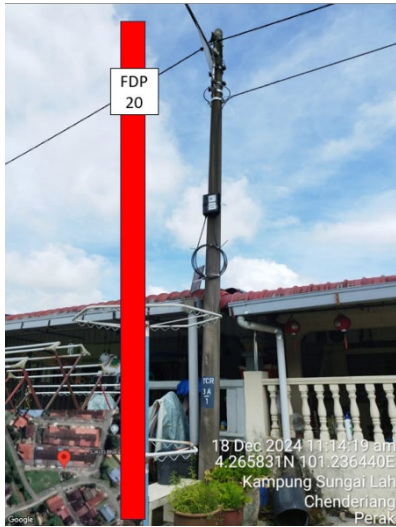
PROJEK PENYEDIAAN DAN PENYELENGGARAAN POINT OF PRESENCE (POP) FASA 2: HAB INFRASTRUKTUR GENTIAN OPTIK BERHAMPIRAN DENGAN SEKOLAH, KAWASAN PERINDUSTRIAN, PREMIS KERAJAAN DAN KOMUNITI SEKITARNYA OLEH KEMENTERIAN KOMUNIKASI MALAYSIA - ZON UTARA (KKMM.400-11/17/132(1))



PROJEK PENYEDIAAN DAN PENYELENGGARAAN POINT OF PRESENCE (POP) FASA 2: HAB INFRASTRUKTUR GENTIAN OPTIK BERHAMPIRAN DENGAN SEKOLAH, KAWASAN PERINDUSTRIAN, PREMIS KERAJAAN DAN KOMUNITI SEKITARNYA OLEH KEMENTERIAN KOMUNIKASI MALAYSIA - ZON UTARA (KKMM.400-11/17/132(1))



PROJEK PENYEDIAAN DAN PENYELENGGARAAN POINT OF PRESENCE (POP) FASA 2: HAB INFRASTRUKTUR GENTIAN OPTIK BERHAMPIRAN DENGAN SEKOLAH, KAWASAN PERINDUSTRIAN, PREMIS KERAJAAN DAN KOMUNITI SEKITARNYA OLEH KEMENTERIAN KOMUNIKASI MALAYSIA - ZON UTARA (KKMM.400-11/17/132(1))

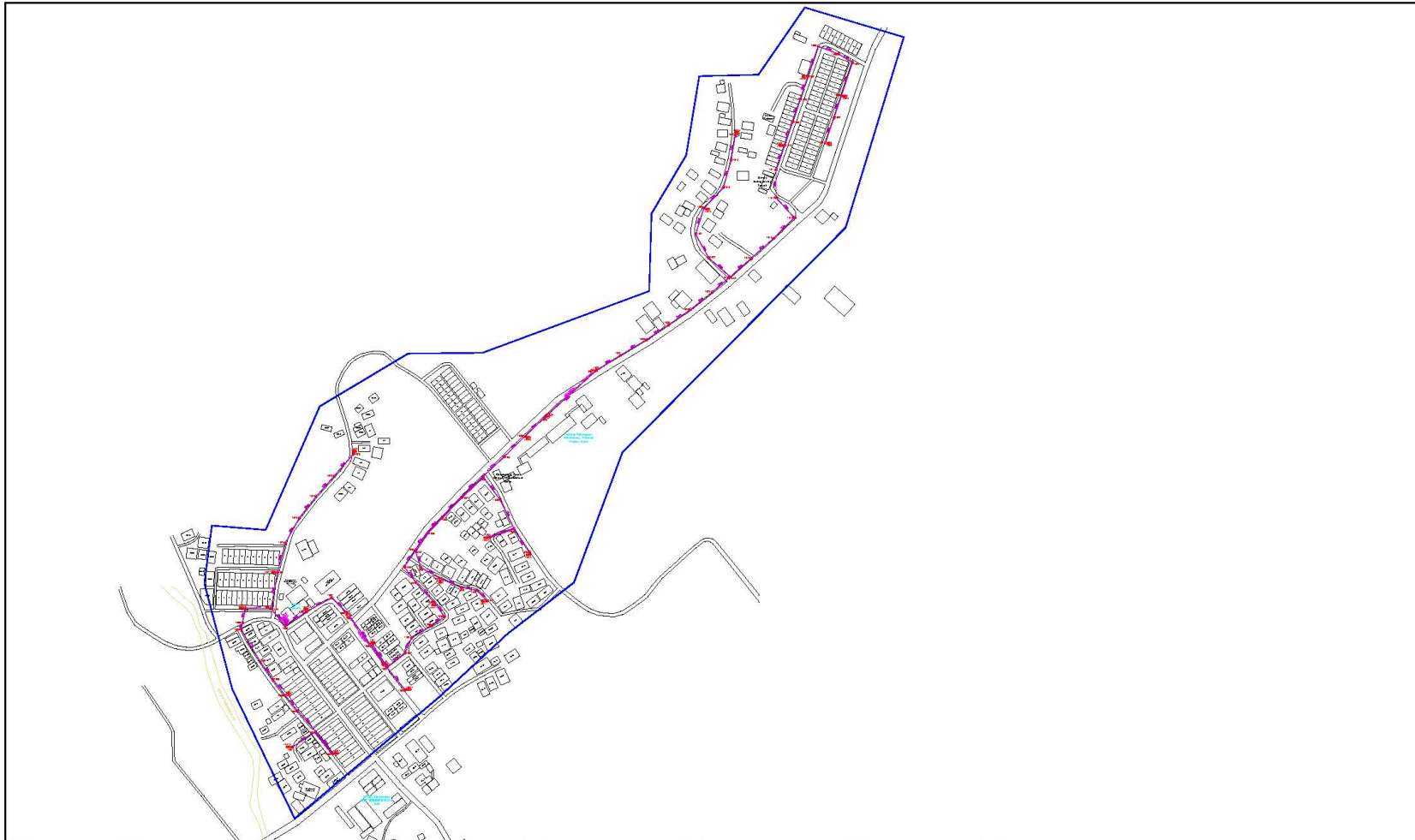


PROJEK PENYEDIAAN DAN PENYELENGGARAAN POINT OF PRESENCE (POP) FASA 2: HAB INFRASTRUKTUR GANTIAN OPTIK BERHAMPIRAN DENGAN SEKOLAH, KAWASAN PERINDUSTRIAN, PREMIS KERAJAAN DAN KOMUNITI SEKITARNYA OLEH KEMENTERIAN KOMUNIKASI MALAYSIA - ZON UTARA (KKMM.400-11/17/132(1))



3rd Parties Dependencies

No.	Local Council/ Authority	Remark
1	JKR Batang Padang	
2	Majlis Daerah Tapah	
3		
4		
5		
6		



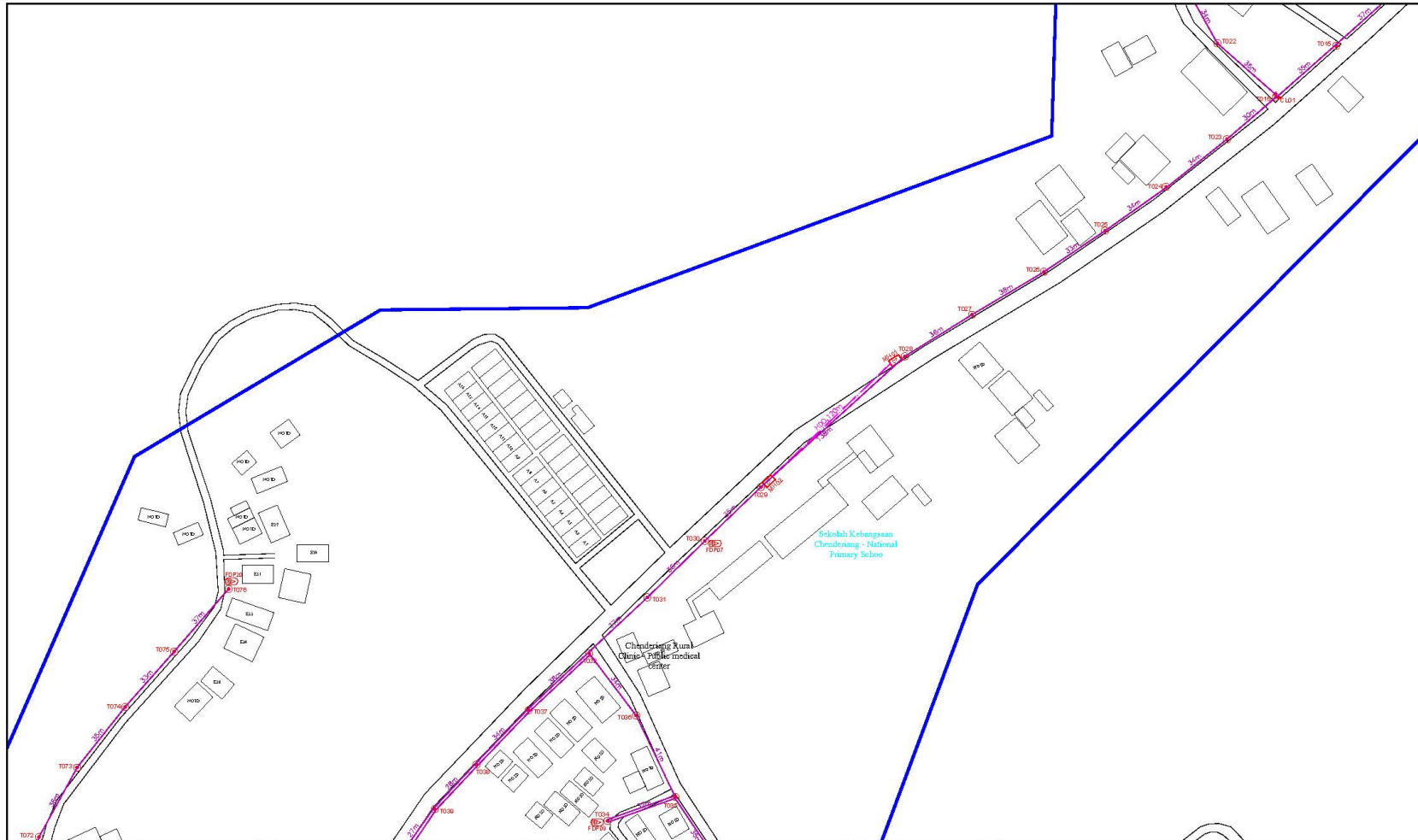
LEGEND	NOS.		NOS.		NOS.		NOS.		NOS.		NOS.		NOS.
12C FOC		Installed 1/4 / 1/8 / 1/32 splitter	1	Installed Pole (6m)	7/8	Suspension	1	New Manhole (PT)	1	Micro-Trenching (Meter)	1	MHT	MH NO.
24C FOC		Installed Patch Cord	1	Installed Pole (7.5M)	7/8	Tension	1	New Manhole (RC7)	1	Temporary Infra (Meter)	1	TKS-1	Existing THB Pole NO.
48C FOC	2244	FOC	1	Installed Pole (8.7M)	7/8	Pole Ring	1	FOP Boundary	1	Loop / Coil (Meter)	1	POBT	New Pole NO.
96C FOC		Closures	4	Existing THB Pole	20	FOP with 1/8 splitter	20	HDG (Meter)	220	Open Cut (Meter)	1	CLRT	Closure NO.
144C FOC		Existing Closures	1	Installed Riser	1	Existing Manhole	1	Open Cut (Meter)	1	FOC NO.	1	OPH	FOP NO.

KEY PLAN :	OWNER/DEVELOPER :	MAIN CONTRACTOR :	PROJECT TITLE :	DRAWING TITLE :	Design By :	Date :
POP2 PROJECT IN PERAK			CONTRACTOR FOR SURVEY, TECHNICAL PROPOSAL AND WAYLEAVE, & PERMIT APPROVAL - POP2 PROJECT	CONSTRUCTION DRAWING ABD0076 SK JENIS KEBANGSAAN (TAMIL) BHARATHY		30/12/2024
					Drawn By :	Scale :
					Checked By :	Job Number :
					DRAWING NUMBER :	Sheet :
					ABD0076-CD-01	1/5
				PROJECT PHASE :	THIS PRINT AND ITS COPYRIGHT ARE THE PROPERTY OF APEX COMMUNICATIONS SDN BHD	
				POP 2	Size : A3	

ACTUAL HOMEPASS :

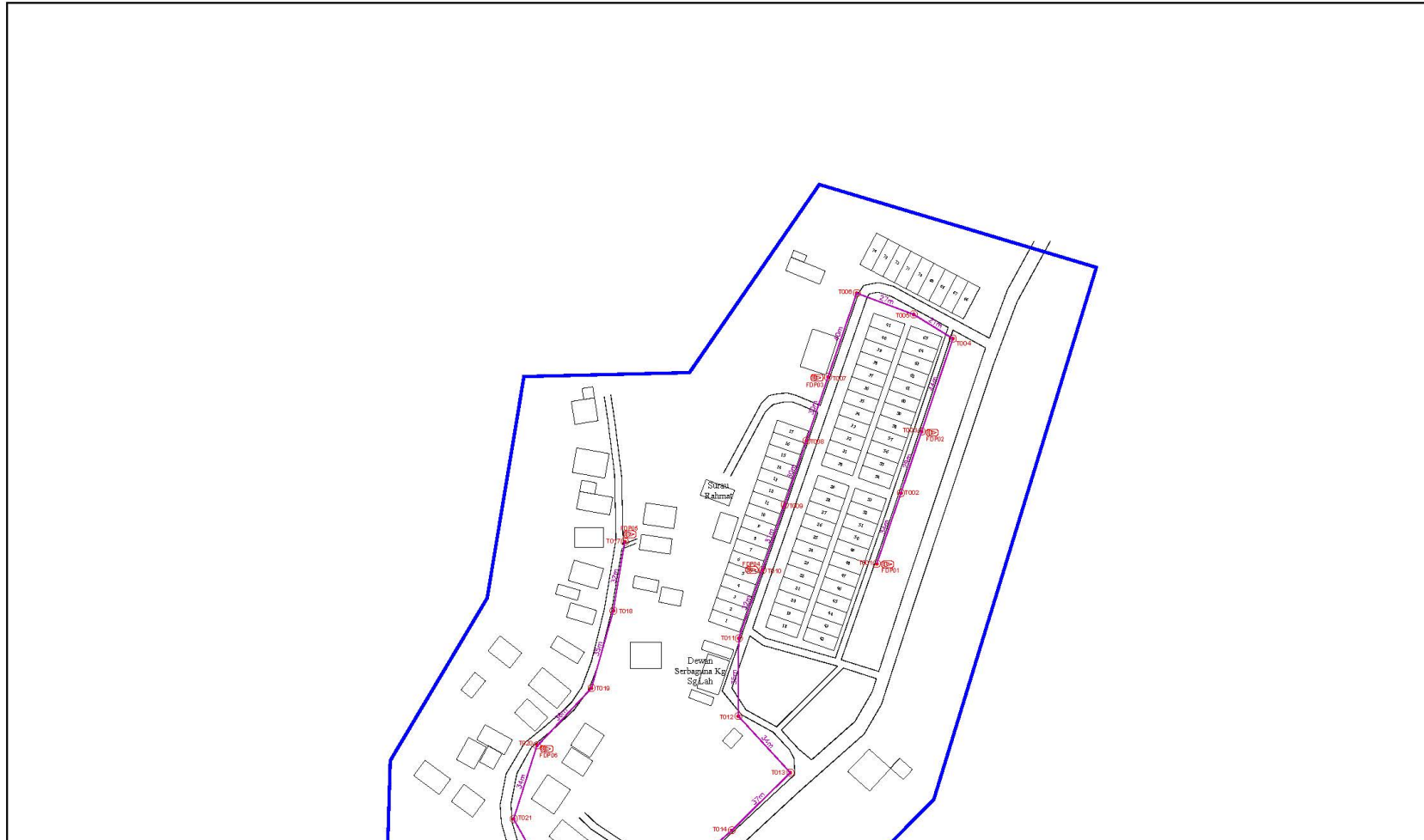




LEGEND	NOS.	NOS.	NOS.	NOS.	NOS.	NOS.	NOS.	NOS.	NOS.	NOS.	NOS.	
12C FOC	Installed 1/4 / 1/8 / 1/32 splitter	Installed Pole (7m)	Installed Pole (6.7M)	Suspension Yarnon	New Manhole (PT)	Micro-Trenching (Meter)	MBH	MBH NO.	144C FOC	Installed Patch Cord	Existing Pole	Existing Fiber
24C FOC	FOC	Installed Pole (7.5M)	Pole Ring	FDP Boundary	New Manhole (RC7)	Temporary Infra (Meter)	TMS-1	Existing INB Pole NO.	84C FOC	Closure	Existing INB Pole	Existing Manhole
48C FOC	2244	FOC	FDP with (1-8) splitter	Existing Manhole	Open Cut (Under)	Loop / Coil (Meter)	P001	New Pole NO.	144C FOC	Existing Closure	Existing Fiber	Existing Fiber
96C FOC		Closure	Existing INB Pole	Existing Manhole	Open Cut (Under)	Active Outdoor Cabinet	CL01	Closure NO.				
144C FOC		Existing Closure	Existing Fiber	Existing Manhole	Open Cut (Under)	FDP NO.	001	FDP NO.				

OWNER/DEVELOPER :	POP2 PROJECT IN PERAK	MAIN CONTRACTOR :	<b>STEADCOM</b> A member of OCK Group Berhad	PROJECT TITLE :	CONTRACTOR FOR SURVEY, TECHNICAL PROPOSAL AND WAYLEAVE, & PERMIT APPROVAL - POP2 PROJECT	DRAWING TITLE :	CONSTRUCTION DRAWING ABD0076 SK JENIS KEBANGSAAN (TAMIL) BHARATHY	Design By :	Date : 30/12/2024
PROJECT PHASE :	POP 2							Drawn By :	Scale : NOT TO SCALE
								Checked By :	Job Number : 1
								DRAWING NUMBER :	ABD0076-CD-03
								Sheet :	3/5
								THIS PRINT AND ITS COPYRIGHT ARE THE PROPERTY OF APEX COMMUNICATIONS SDN BHD	Size : A3

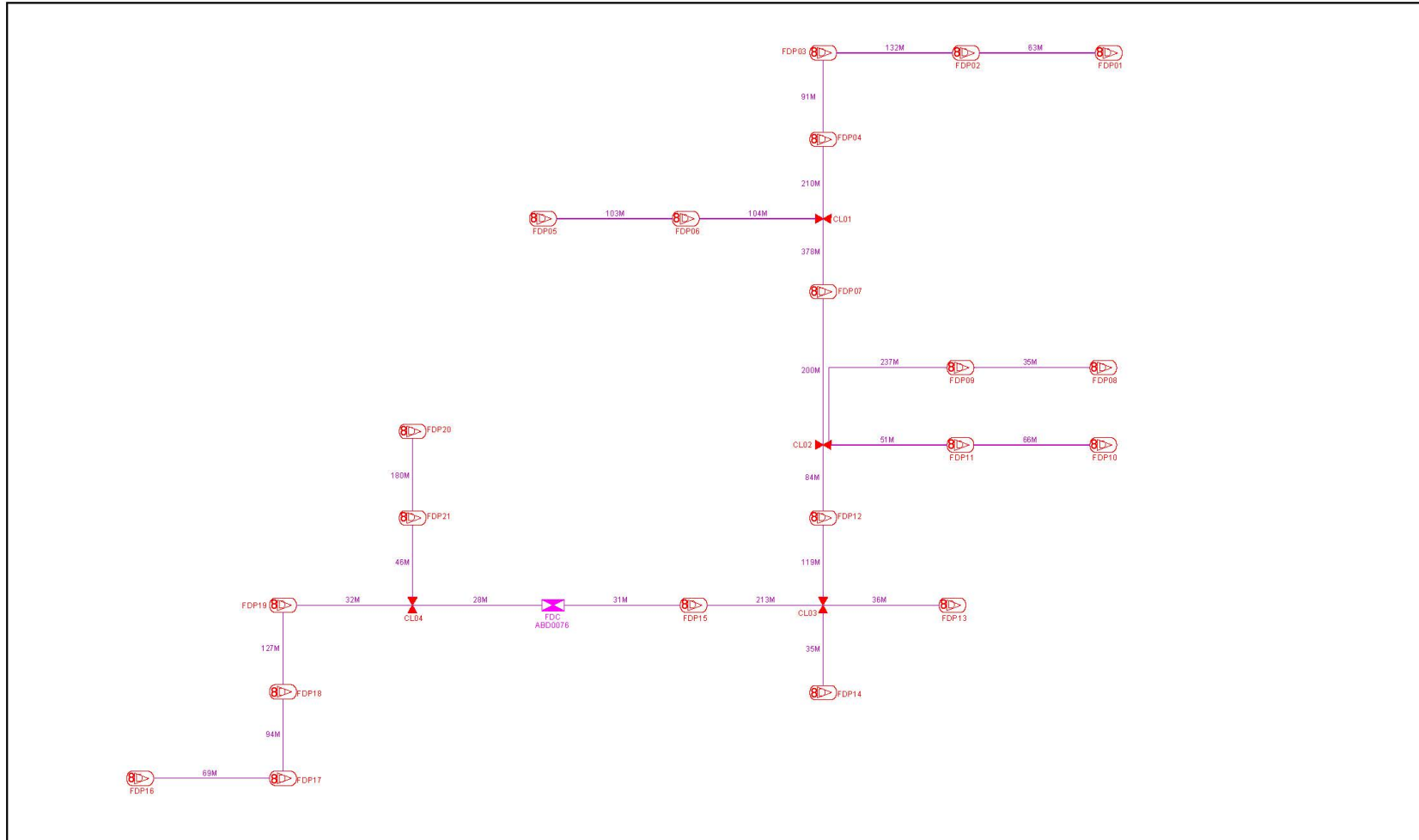


LEGEND	NOS.	NOS.	NOS.	NOS.	NOS.	NOS.	NOS.	NOS.	NOS.	NOS.	NOS.
12C FOC	Installed 1:4 / 1:8 / 1:32 splitter	Installed Pole (6m)	Suspension	New Manhole (RT)	Micro-Tranching (Meter)	MH	MH NO.	1:4			
24C FOC	Installed Patch Cord	Installed Pole (7.5M)	Tension	New Manhole (RGT)	Temporary Infra (Meter)	TKS-1	Existing TMS Pole NO.	1:4			
48C FOC	FDC	Installed Pole (8.7M)	Pole Ring	FDP Boundary	Loop / Coil (Meter)	POH	New Pole NO.	76			
96C FOC	Closure	Existing TMS Pole	FDP with 1:8 splitter	HDD (Meter)	Active Outdoor Cabinet	CLM	Closure NO.	4			
144C FOC	Existing Closure	Installed Riser	Existing Manhole	Open Cut (Meter)	OCM	FDC NO.	FDC NO.	70			

KEY PLAN :	OWNER/DEVELOPER :	MAIN CONTRACTOR :	PROJECT TITLE :	DRAWING TITLE :	Design By :	Date :
POP2 PROJECT IN PERAK	<b>APEX</b> COMMUNICATIONS SDN BHD 187475-V	<b>STEADCOM</b> A member of OCK Group Berhad	CONTRACTOR FOR SURVEY, TECHNICAL PROPOSAL AND WAYLEAVE, & PERMIT APPROVAL - POP2 PROJECT	CONSTRUCTION DRAWING ABD0076 SK JENIS KEBANGSAAN (TAMIL) BHARATHY	Drewn By :	30/12/2024
				PROJECT PHASE :	Checked By :	Scale : NOT TO SCALE
				POP 2	Job Number : 1	Sheet : 4/5
					DRAWING NUMBER : ABD0076-CD-04	THIS PRINT AND ITS COPYRIGHT ARE THE PROPERTY OF APEX COMMUNICATIONS SDN BHD
					Size : A3	

ACTUAL HOMEPASS :



LEGEND	NOS.	DESCRIPTION	NOS.	DESCRIPTION	NOS.	DESCRIPTION	NOS.	DESCRIPTION	NOS.	DESCRIPTION	NOS.	DESCRIPTION	NOS.	DESCRIPTION
12C FOC		Installed 1/4 / 1/8 / 1/32 splitter		Installed Pole (6m)		Suspension		New Manhole (RT)		Micro-Trenching (Meter)		MAN	MAN NO.	
24C FOC		Installed Patch Cord		Installed Pole (7.5M)		Yarnish		New Manhole (R/C)		Temporary Infra (Meter)		TKS-1	Existing TMB Pole NO.	
48C FOC	224	FOC	1	Installed Pole (6.7M)	76	Pole Ring		FDP Boundary		Loop / Coil (Meter)		POBI	New Pole NO.	76
96C FOC		Closure	4	Existing TMB Pole		FDP with (1-18) splitter	20	HDD (Meter)	22	Active Outdoor Cabinet		CL01	Closure NO.	4
144C FOC		Existing Closure		Installed Manhole		Existing Manhole		Open Cut (Meter)		FOC NO.		OPR	FDP NO.	20

KEY PLAN :	OWNER/DEVELOPER :	MAIN CONTRACTOR :	PROJECT TITLE :	DRAWING TITLE :	Design By :	Date :
POP2 PROJECT IN PERAK	<b>APEX</b> COMMUNICATIONS SDN BHD 187475-V	<b>STEADCOM</b> A member of OCK Group Berhad	CONTRACTOR FOR SURVEY, TECHNICAL PROPOSAL AND WAYLEAVE, & PERMIT APPROVAL - POP2 PROJECT	<b>SLD DRAWING ABD0076 SK JENIS KEBANGSAAN (TAMIL) BHARATHY</b>	Drawn By :	30/12/2024
					Checked By :	Scale : NOT TO SCALE
					DRAWING NUMBER :	Job Number : 1
					<b>ABD0076-CD-05</b>	Sheet : 5/5
				PROJECT PHASE: POP 2	THIS PRINT AND ITS COPYRIGHT ARE THE PROPERTY OF APEX COMMUNICATIONS SDN BHD	
						Size : A3

ACTUAL HOMEPASS :