

POP2 E/SIDE PMU KENERING- Technical Proposal

Company Name	:	Harta Unity Sdn. Bhd.
Company Adress	:	67/67A, Laluan Meru Perdana II, Taman Meru perdana 2, 31200 Chemor, Perak
Prepared By	:	Ahmad Firdaus Bin Husnee
Date	:	



POINT A



POINT B

Starting Point

Site/Boundary Name	:	Lenggong
Address	:	Jalan Lenggong-Gerik, Kampung Chepor
District	:	Lengoong
Postcode	:	33400
State	:	Perak
GPS Coordinate	:	5.144015°N, 100.990189°E
LRD	:	A

End Point

Site/Boundary Name	:	Gerik, Perak
Address	:	Sekolah Kebangsaan Felda Papulut
District	:	Felda Papulut
Postcode	:	33300
State	:	Perak
GPS Coordinate	:	5.310020°N, 101.079107°E
LRD	:	B

Work Summary

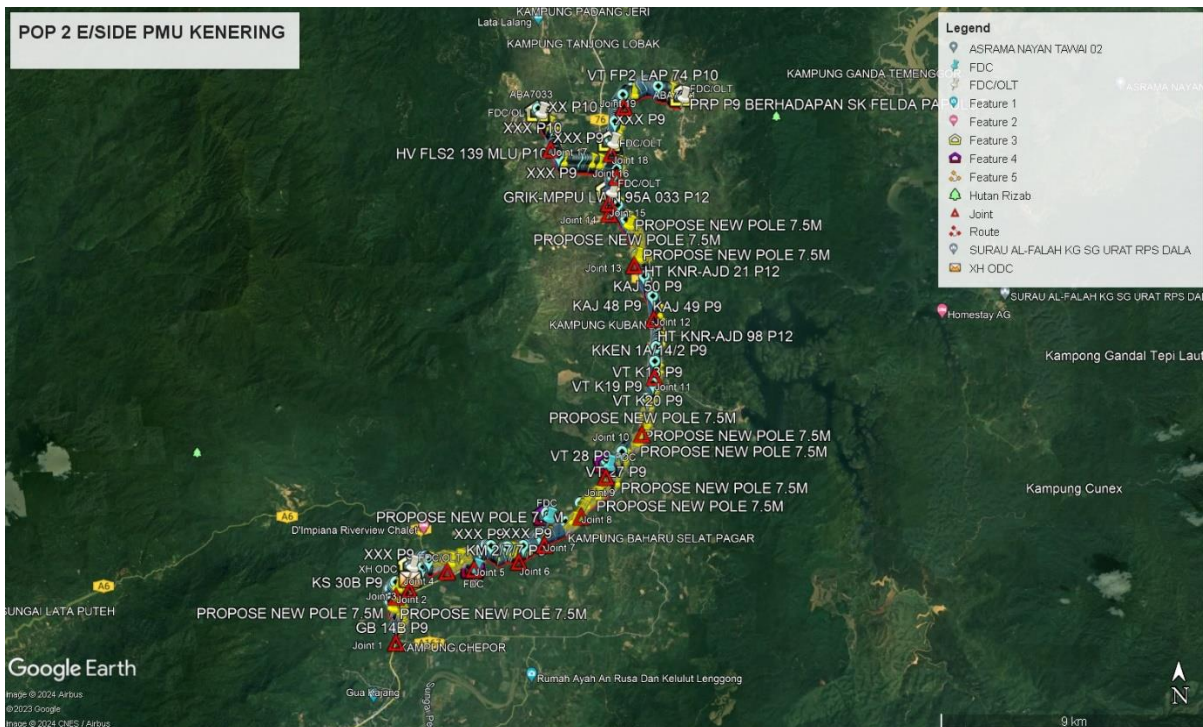
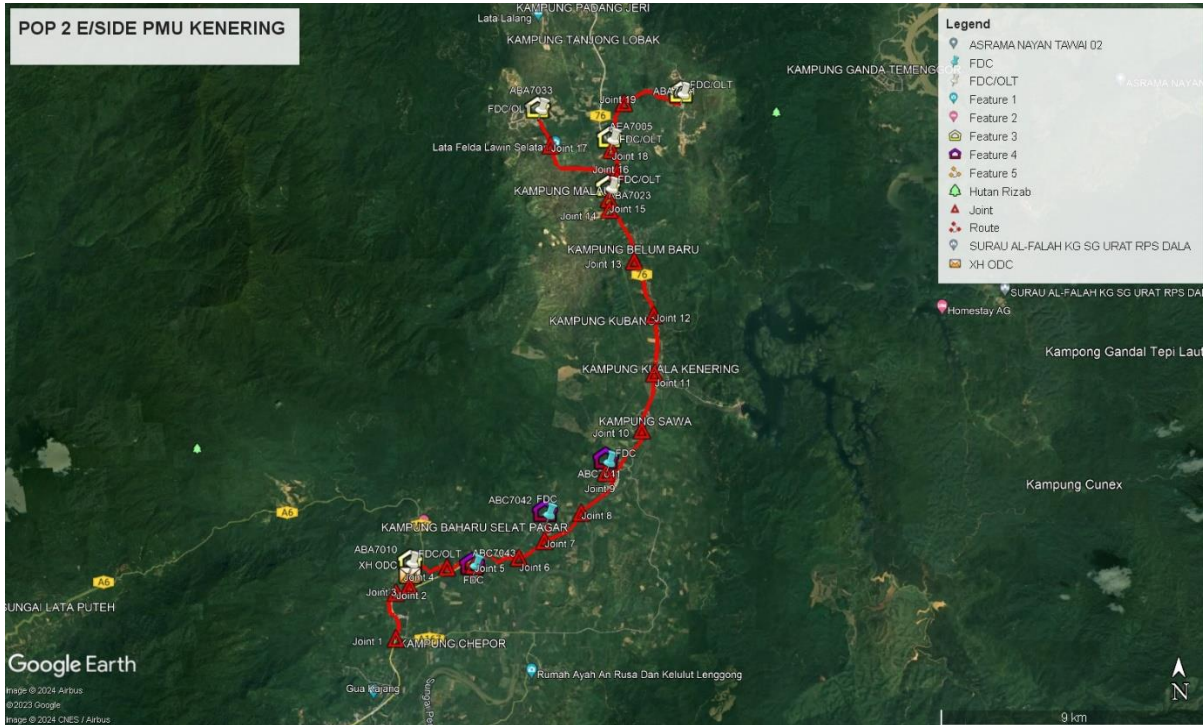
No	Proposed Distance and Method	Unit	Qty
1	Horizontal Directional Drilling (HDD)	m	0
2	Carriage Way Open Trench (CW)	m	0
3	Grass Verge Open Trenching (GV)	m	35m
4	Micro Trenching (MT)	m	0
			35m

No	Propose Distance and Method	Unit	Qty
1	Propose Pole 7.5M	EA	280
2	Propose Pole 9M	EA	54
3	Joint Closure	EA	19
4	Estimated Time Required For Completion	DAYS	90

Local Authority Summary

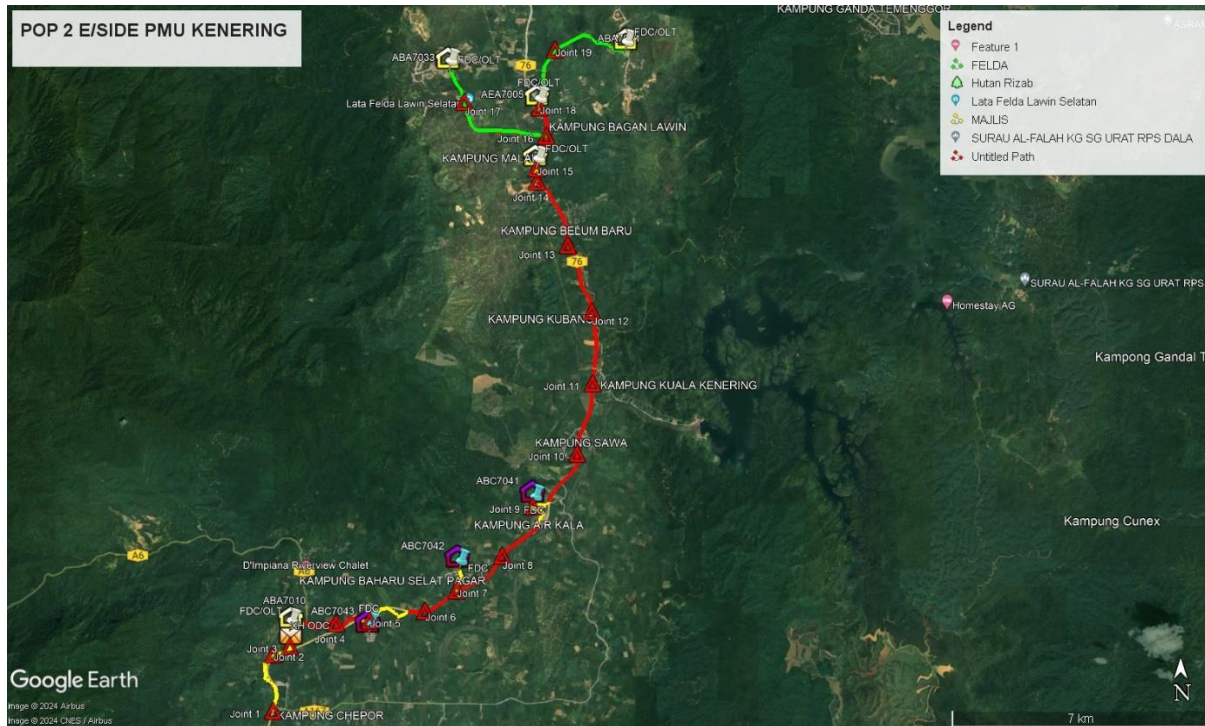
Bil	Items	Owner	Quantity	Distance
1	Open Trenching	Estate/Private Land	35M	35M
2	New Pole	JKR	8939M	8939M
		MAJLIS	1978M	1978M
		Estate/Private Land	518M	518M
3	Existing TNB Pole	JKR	12741M	12741M
		MAJLIS	4224M	4224M
		Estate/Private Land	7557M	7557M
Total				35992M

Site Plan- KMZ (Overview Site Area)



Site

Plan-KMZ Routing (All Local Authority)



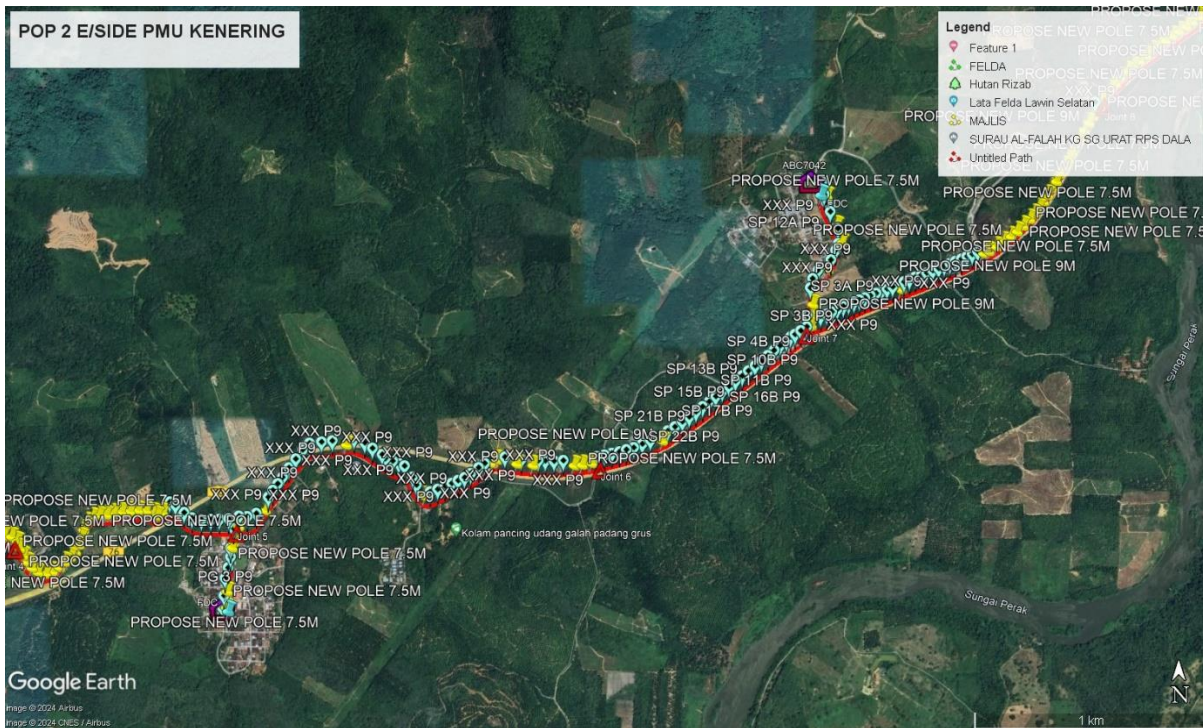
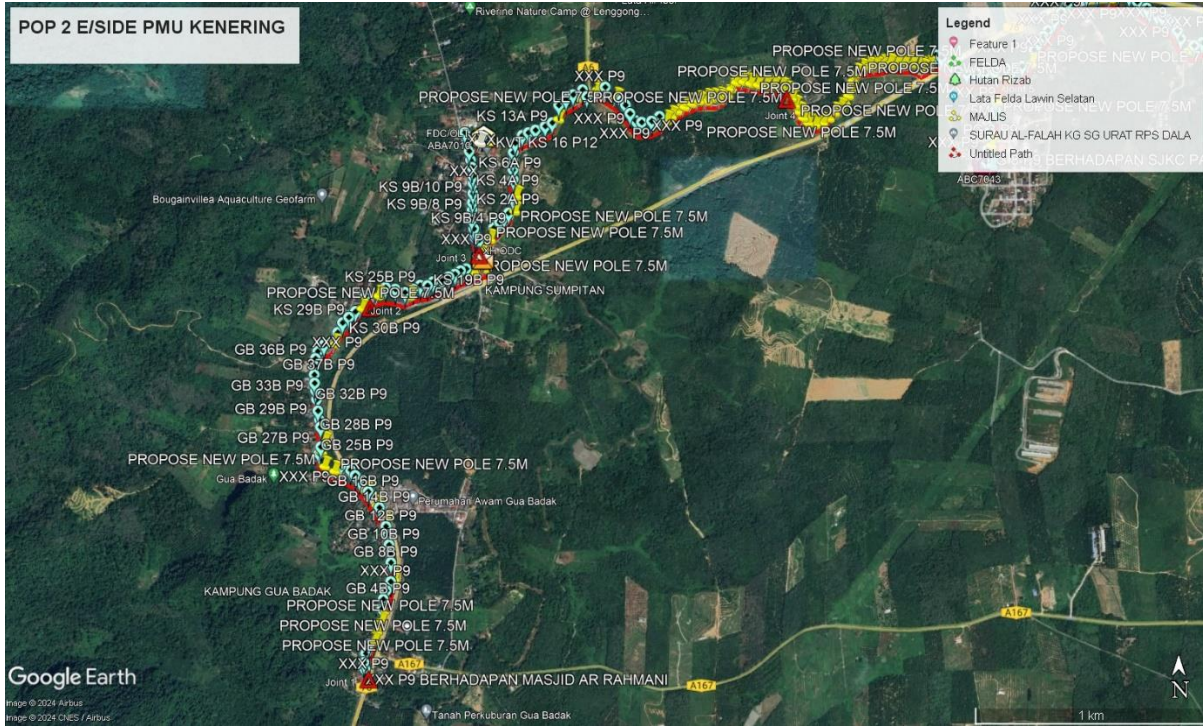
Green Colour – Estate/Private Land

Red Colour – JKR

Yellow Colour – Majlis

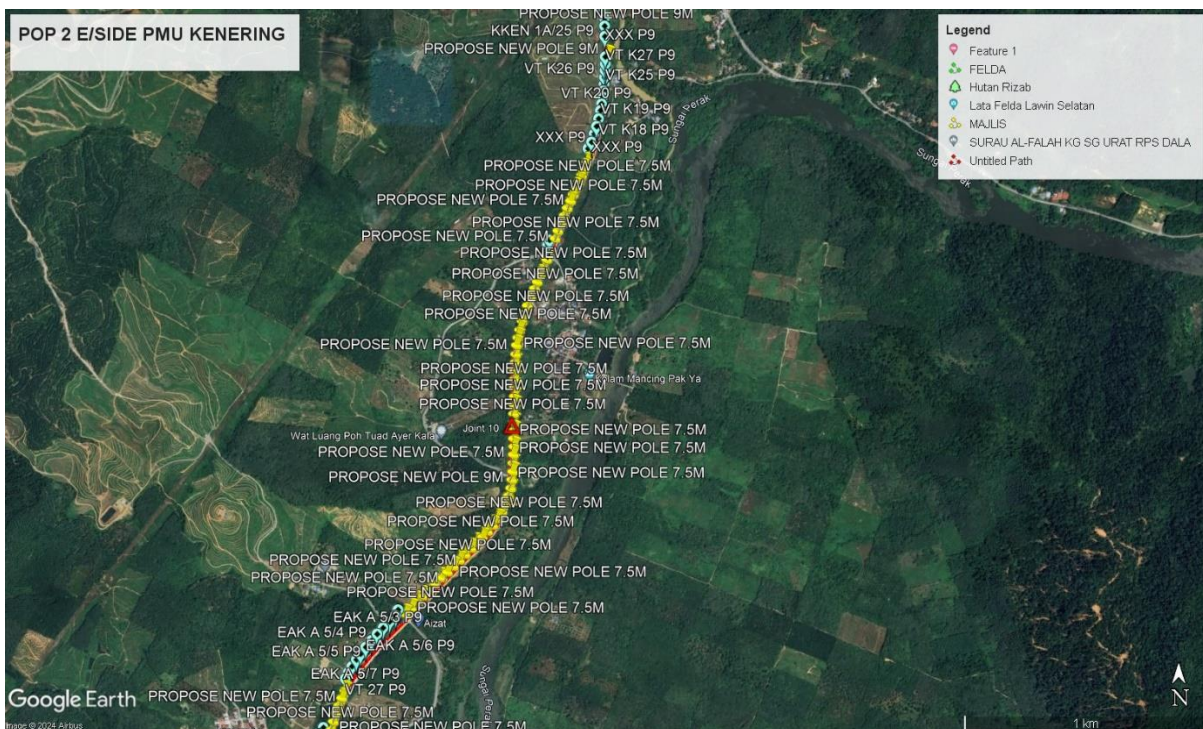
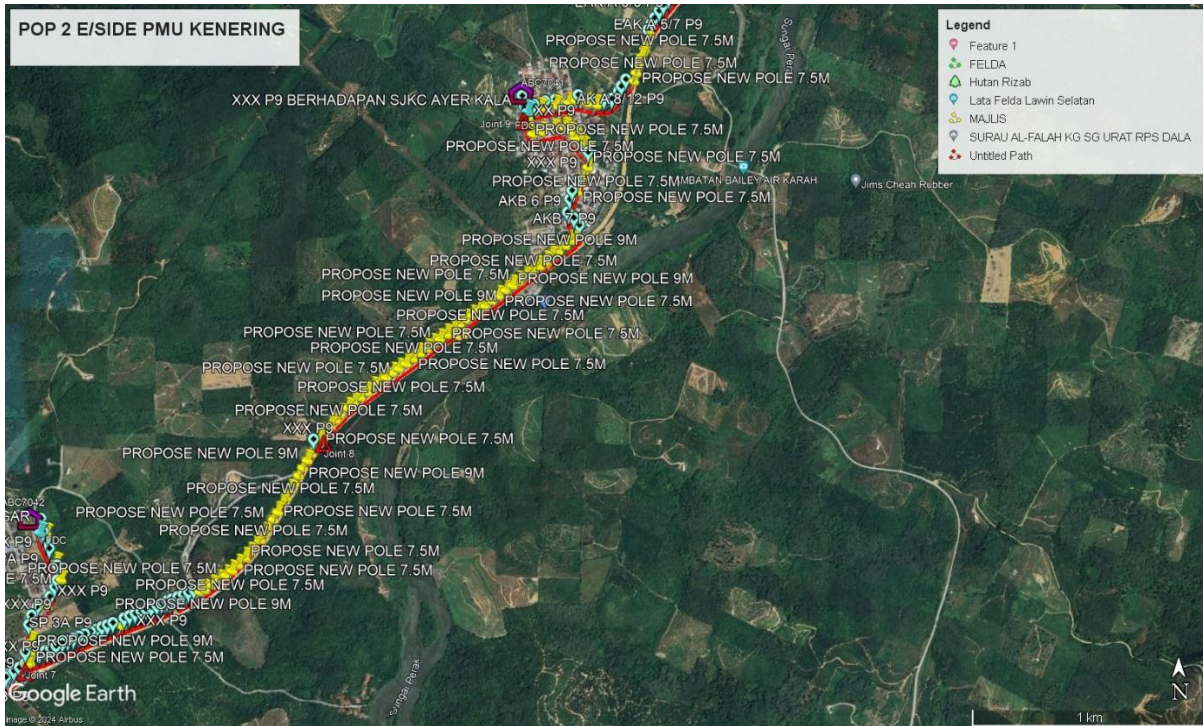
Site Plan-KMZ Routing (All site area)

Route



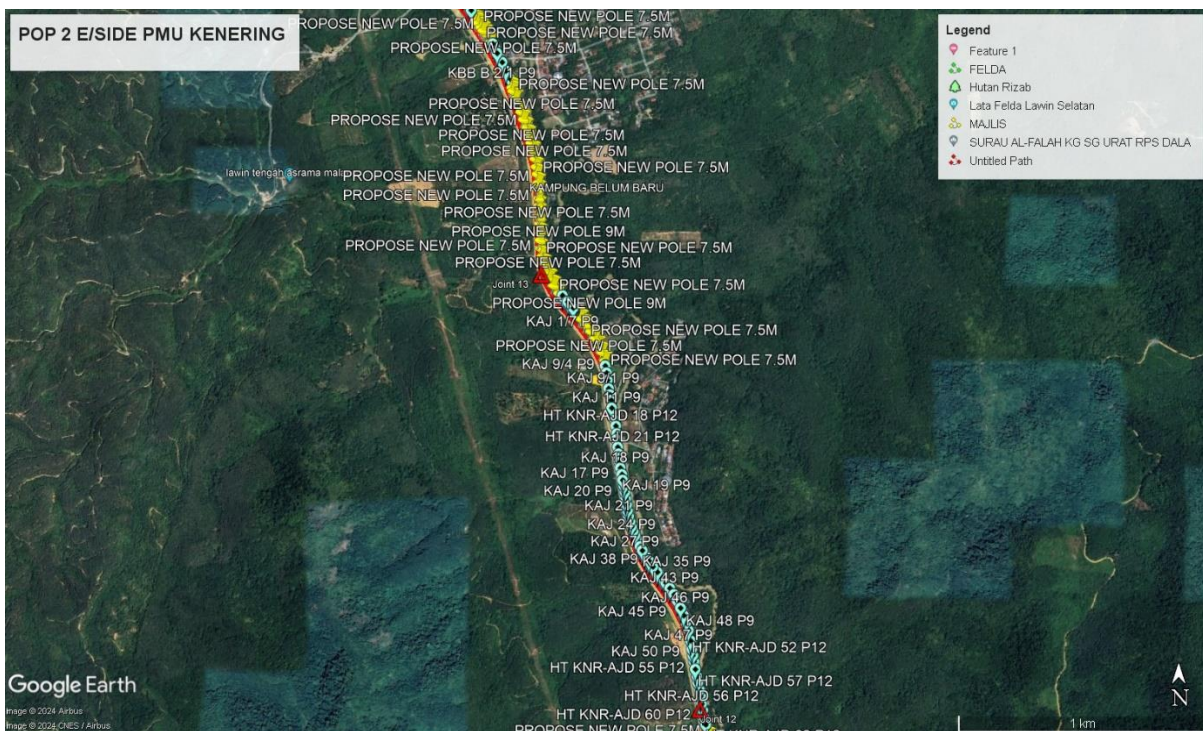
Site Plan-KMZ Routing (All site area)

Route



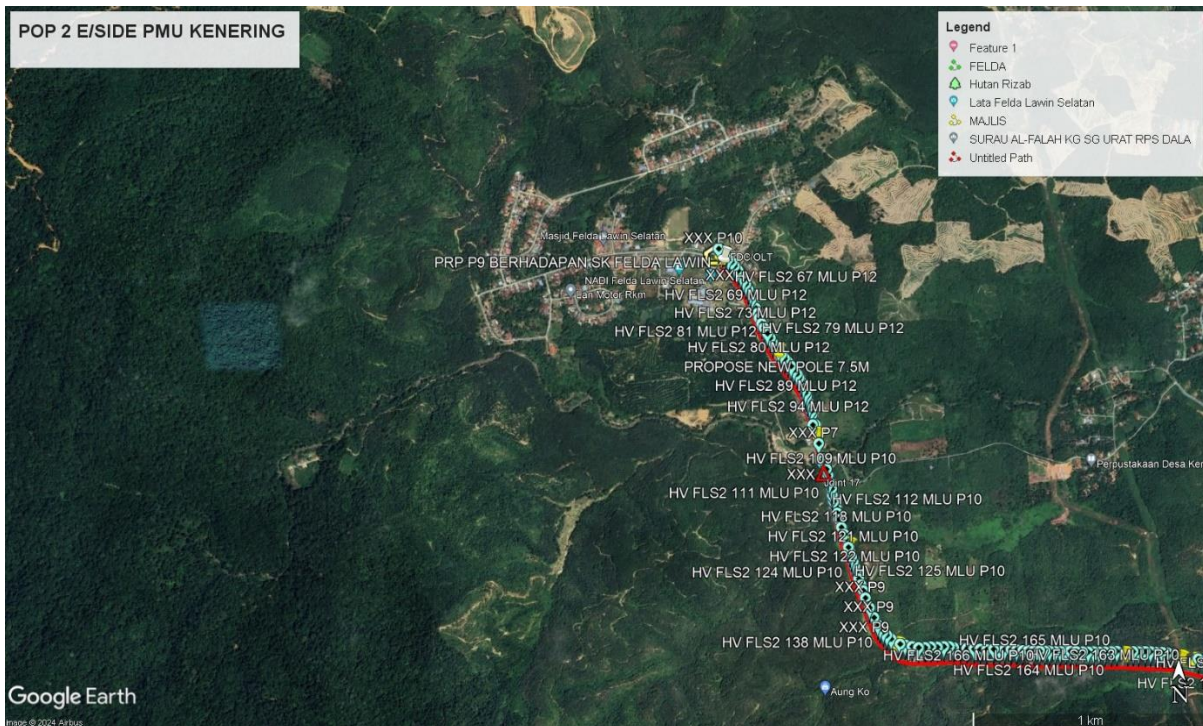
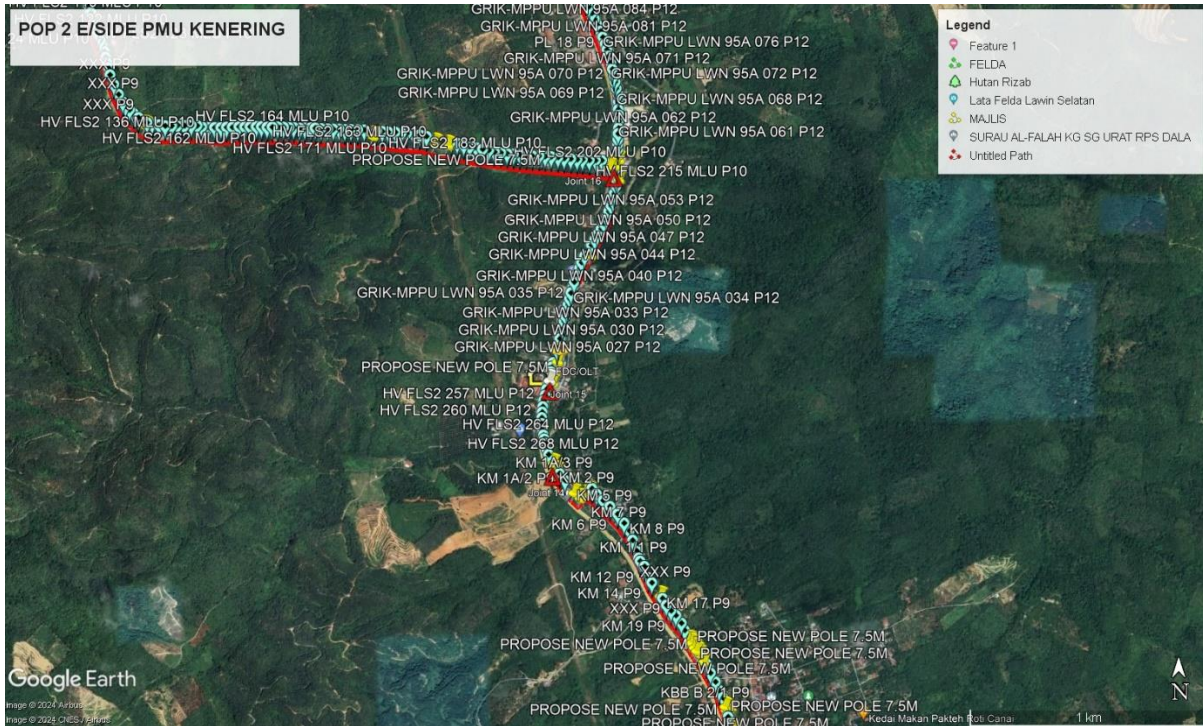
Site Plan-KMZ Routing (All site area)

Route



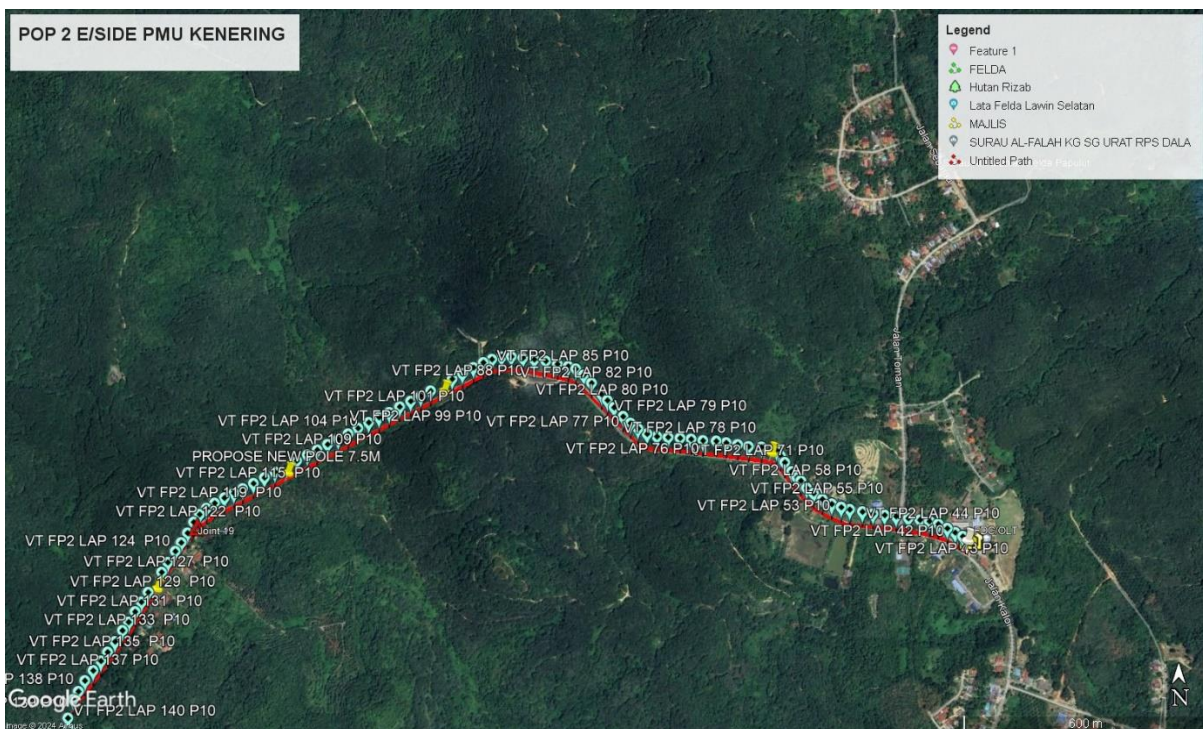
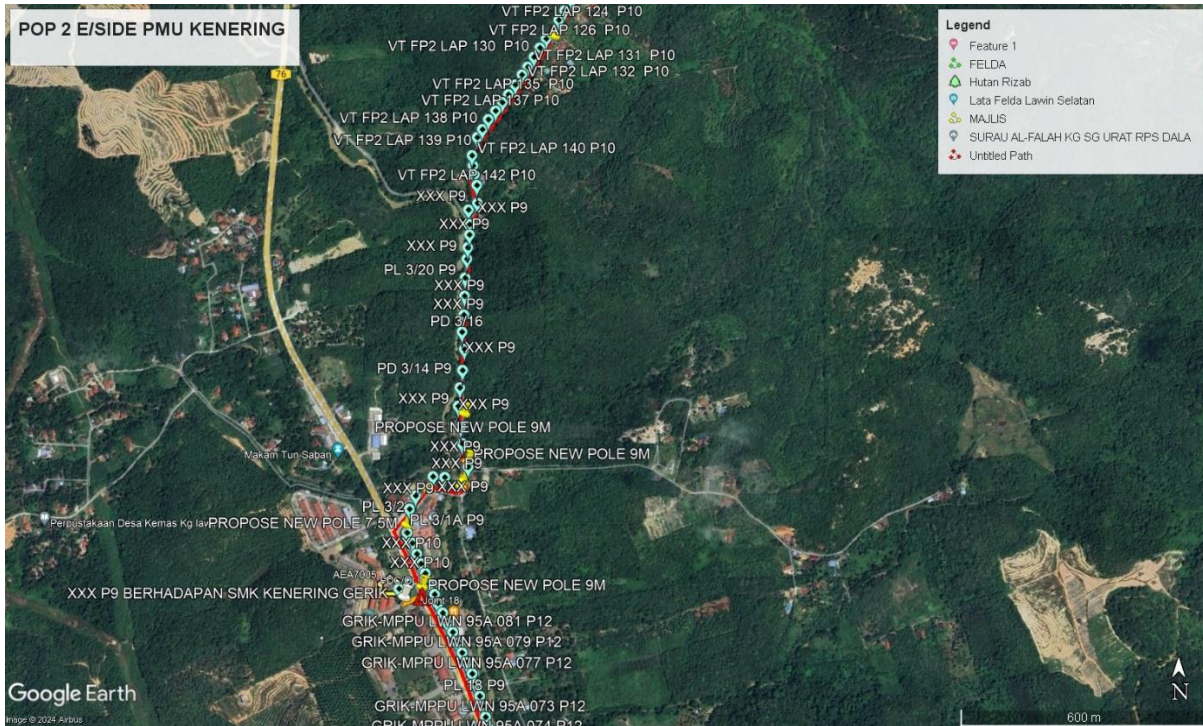
Site Plan-KMZ Routing (All site area)

Route



Site Plan-KMZ Routing (All site area)

Route



Propose New Pole Lat & Long Table

PROPOSE POLE COORDINATE		
POLE NUMBER	LATITUDE	LONGITUDE
T01	5.145399	100.990387
T02	5.145791	100.990485
T03	5.146177	100.990662
T04	5.147813	100.991149
T05	5.149991	100.990854
T06	5.150643	100.990491
T07	5.151188	100.990079
T08	5.151974	100.988855
T09	5.152155	100.988465
T10	5.152715	100.988353
T11	5.153105	100.988476
T12	5.15686	100.988878
T13	5.158224	100.989927
T14	5.158718	100.990544
T15	5.158705	100.99176
T16	5.159608	100.994247
T17	5.159747	100.994614
T18	5.160293	100.994629
T19	5.159992	100.994722
T20	5.160593	100.994669
T21	5.164728	100.994318
T22	5.160888	100.994866
T23	5.161978	100.99581
T24	5.162564	100.995873
T25	5.1655	100.997513
T26	5.166274	100.99838
T27	5.166619	100.999016
T28	5.166474	100.998964
T29	5.166296	100.99973
T30	5.165403	101.001661
T31	5.165579	101.001854
T32	5.165769	101.002099
T33	5.16593	101.002367
T34	5.166056	101.00264
T35	5.166145	101.002911
T36	5.166136	101.003208
T37	5.166213	101.003206
T38	5.166225	101.003455
T39	5.166265	101.003702
T40	5.16618	101.003739
T41	5.166356	101.003997
T42	5.166594	101.004156
T43	5.166827	101.00433
T44	5.166854	101.004604

PROPOSE POLE COORDINATE		
POLE NUMBER	LATITUDE	LONGITUDE
T45	5.166781	101.004872
T46	5.16673	101.005153
T47	5.166694	101.005461
T48	5.166677	101.005763
T49	5.16664	101.006067
T50	5.166465	101.006304
T51	5.166204	101.006434
T52	5.165934	101.006555
T53	5.165687	101.006709
T54	5.165464	101.006875
T55	5.165284	101.007077
T56	5.16523	101.007365
T57	5.165296	101.007645
T58	5.165462	101.007893
T59	5.165679	101.008089
T60	5.165857	101.008309
T61	5.166061	101.008506
T62	5.166325	101.008635
T63	5.166603	101.00873
T64	5.166893	101.008806
T65	5.167174	101.008938
T66	5.167354	101.009154
T67	5.167425	101.009396
T68	5.167462	101.009671
T69	5.167511	101.009938
T70	5.16756	101.010221
T71	5.167572	101.010527
T72	5.167614	101.010826
T73	5.167596	101.011135
T74	5.167522	101.011427
T75	5.167397	101.01155
T76	5.167515	101.011772
T77	5.167616	101.012353
T78	5.167	101.014694
T79	5.166382	101.014475
T80	5.166178	101.014417
T81	5.164495	101.014206
T82	5.163865	101.014162
T83	5.167605	101.01571
T84	5.170115	101.018808
T85	5.168135	101.021827
T86	5.169409	101.024457
T87	5.169541	101.024641
T88	5.169384	101.02538

PROPOSE POLE COORDINATE		
POLE NUMBER	LATITUDE	LONGITUDE
T89	5.16933	101.026001
T90	5.169325	101.02759
T91	5.169342	101.027899
T92	5.169407	101.028269
T93	5.170266	101.031002
T94	5.174655	101.036652
T95	5.175101	101.036746
T96	5.175499	101.036797
T97	5.176833	101.037389
T98	5.177871	101.037925
T99	5.178524	101.037725
T100	5.17966	101.037347
T101	5.174686	101.036738
T102	5.176078	101.040225
T103	5.177438	101.043341
T104	5.17752	101.043542
T105	5.17769	101.043825
T106	5.177883	101.044118
T107	5.178077	101.04437
T108	5.178265	101.044599
T109	5.178482	101.044832
T110	5.178742	101.045096
T111	5.178934	101.045277
T112	5.179173	101.04547
T113	5.17942	101.045661
T114	5.179676	101.045836
T115	5.179943	101.046016
T116	5.1802	101.046158
T117	5.180483	101.046324
T118	5.180782	101.046492
T119	5.181047	101.04665
T120	5.181324	101.046793
T121	5.181598	101.046947
T122	5.181878	101.047105
T123	5.182175	101.047273
T124	5.182458	101.047444
T125	5.182722	101.047594
T126	5.183255	101.04792
T127	5.183508	101.048113
T128	5.183762	101.048312
T129	5.184005	101.048517
T130	5.18423	101.048737
T131	5.184468	101.048982

PROPOSE POLE COORDINATE		
POLE NUMBER	LATITUDE	LONGITUDE
T132	5.184668	101.049201
T133	5.184877	101.049457
T134	5.185069	101.049714
T135	5.185262	101.049965
T136	5.185441	101.05022
T137	5.185631	101.050474
T138	5.185818	101.050732
T139	5.185981	101.050969
T140	5.186168	101.051234
T141	5.186361	101.051485
T142	5.186564	101.051758
T143	5.186745	101.052023
T144	5.186922	101.052273
T145	5.187109	101.052531
T146	5.187299	101.052782
T147	5.187498	101.053041
T148	5.187668	101.053301
T149	5.187867	101.053576
T150	5.188023	101.053787
T151	5.188215	101.054039
T152	5.188379	101.054302
T153	5.188586	101.05455
T154	5.188779	101.054819
T155	5.188992	101.055098
T156	5.189184	101.055337
T157	5.189337	101.055568
T158	5.189522	101.055834
T159	5.189727	101.056096
T160	5.189925	101.056373
T161	5.190109	101.056626
T162	5.190324	101.056841
T163	5.190505	101.05711
T164	5.190712	101.057373
T165	5.190908	101.05762
T166	5.191056	101.057828
T167	5.192784	101.057841
T168	5.193344	101.058118
T169	5.19373	101.058253
T170	5.194336	101.05823
T171	5.194545	101.058048
T172	5.194692	101.057923
T173	5.19487	101.057753
T174	5.195063889	101.0575611

PROPOSE POLE COORDINATE		
POLE NUMBER	LATITUDE	LONGITUDE
T174	5.195063889	101.0575611
T175	5.195236	101.057363
T176	5.195181	101.056926
T177	5.19507	101.056475
T178	5.195005	101.056118
T179	5.195372	101.056011
T180	5.195633	101.055945
T181	5.195977	101.056429
T182	5.196085	101.057025
T183	5.196199	101.057526
T184	5.19626	101.05779
T185	5.196173	101.058235
T186	5.19611	101.058588
T187	5.197029	101.060039
T188	5.197342	101.06012
T189	5.197656	101.060213
T190	5.197959	101.060327
T191	5.198254	101.060455
T192	5.198524	101.060564
T193	5.20144	101.062893
T194	5.201664	101.063118
T195	5.201928	101.063388
T196	5.202138	101.063606
T197	5.202376	101.06384
T198	5.202607	101.06406
T199	5.202855	101.064313
T200	5.203082	101.064529
T201	5.203295	101.064754
T202	5.203517	101.064977
T203	5.203737	101.065203
T204	5.203971	101.065425
T205	5.204174	101.065645
T206	5.204401	101.065866
T207	5.204622	101.066063
T208	5.204856	101.066269
T209	5.205102	101.066455
T210	5.205389	101.066622
T211	5.205709	101.066755
T212	5.205996	101.066863
T213	5.206286	101.066955
T214	5.206615	101.066998
T215	5.206924	101.067029
T216	5.207245	101.067042

PROPOSE POLE COORDINATE		
POLE NUMBER	LATITUDE	LONGITUDE
T217	5.207571	101.06705
T218	5.207875	101.06707
T219	5.208185	101.067061
T220	5.208501	101.067073
T221	5.208827	101.067064
T222	5.209141	101.067067
T223	5.209479	101.06709
T224	5.209809	101.067098
T225	5.210158	101.067107
T226	5.210465	101.067106
T227	5.210794	101.067114
T228	5.211116	101.06713
T229	5.21143	101.067149
T230	5.211774	101.067179
T231	5.212062	101.067235
T232	5.212365	101.067304
T233	5.212696	101.067399
T234	5.212997	101.067495
T235	5.2133	101.067601
T236	5.213614	101.067731
T237	5.213961	101.067878
T238	5.21421	101.067985
T239	5.214476	101.068095
T240	5.214752	101.068231
T241	5.215064	101.068349
T242	5.215586	101.068558
T243	5.215868	101.068675
T244	5.216162	101.06878
T245	5.216443	101.068912
T246	5.216746	101.069022
T247	5.21703	101.069146
T248	5.217296	101.069271
T249	5.21755	101.069371
T250	5.217804	101.06948
T251	5.218049	101.069595
T252	5.218294	101.069693
T253	5.218546	101.069789
T254	5.218786	101.069895
T255	5.222913	101.070704
T256	5.225087	101.070707
T257	5.234705	101.071896
T258	5.239055	101.071658
T259	5.243361	101.071115

PROPOSE POLE COORDINATE		
POLE NUMBER	LATITUDE	LONGITUDE
T260	5.25783	101.067079
T261	5.258151	101.066953
T262	5.258423	101.06682
T263	5.258674	101.06669
T264	5.258945	101.066532
T265	5.259205	101.066332
T266	5.259426	101.066158
T267	5.260416	101.0653
T268	5.260709	101.065099
T269	5.260983	101.064956
T270	5.261244	101.064817
T271	5.261529	101.064729
T272	5.261824	101.064656
T273	5.262133	101.064602
T274	5.262449	101.064583
T275	5.262718	101.064579
T276	5.263092	101.064562
T277	5.26332	101.064583
T278	5.263497	101.064551
T279	5.263766	101.064541
T280	5.264041	101.064533
T281	5.264366	101.064521
T282	5.26463	101.064517
T283	5.264961	101.064473
T284	5.265241	101.064433
T285	5.265549	101.064394
T286	5.265858	101.064322
T287	5.266162	101.064232
T288	5.266461	101.064138
T289	5.266768	101.064039
T290	5.267065	101.063939
T291	5.267358	101.06384
T292	5.267876	101.063643
T293	5.268162	101.063533
T294	5.268296	101.06349
T295	5.270017	101.062671
T296	5.270335	101.062474
T297	5.270455	101.062391
T298	5.270578	101.062307
T299	5.270753	101.062198
T300	5.270852	101.062125
T301	5.272546	101.060995
T302	5.276576	101.05827

PROPOSE POLE COORDINATE		
POLE NUMBER	LATITUDE	LONGITUDE
T304	5.276416	101.058096
T305	5.27629	101.057914
T306	5.276501	101.057665
T307	5.277346	101.057002
T308	5.277629	101.056865
T309	5.280722	101.056852
T311	5.281544	101.057038
T312	5.285609	101.058332
T313	5.288513	101.059403
T314	5.289049	101.059252
T315	5.289006	101.059044
T316	5.289798	101.052838
T317	5.289881	101.052348
T318	5.290087	101.050029
T319	5.290475	101.041378
T320	5.294255	101.039515
T321	5.298389	101.038364
T322	5.301607	101.036841
T323	5.305215	101.034605
T324	5.289282	101.059413
T325	5.296116	101.057569
T326	5.29752	101.057197
T327	5.29831	101.057684
T328	5.29836	101.05839
T329	5.298854	101.058540
T330	5.298957	101.058621
T331	5.300076	101.058530
T332	5.309	101.06058
T333	5.311628	101.06352
T334	5.313499	101.067118
T335	5.312081	101.074672

Overall Pole (Propose New & Existing)

No.	Pole & Manhole ID	Distance	Latitude	Longitude	Local Authority
1	XXX P9 BERHADAPAN MASJID AR RAHMANI	30	5.144117	100.990112	MAJLIS
2	GB 7A P9	40	5.144372	100.990074	MAJLIS
3	XXX P9	43	5.144717	100.990144	MAJLIS
4	XXX P9	40	5.145073	100.990261	MAJLIS
5	PROPOSE P7.5	46	5.145399	100.990387	MAJLIS
6	PROPOSE P7.5	48	5.145791	100.990485	MAJLIS
7	PROPOSE P7.5	33	5.146177	100.990662	MAJLIS
8	GB 3B P9	42	5.146444	100.990773	MAJLIS
9	GB 4B P9	41	5.146812	100.990821	MAJLIS
10	GB 5B P9	43	5.147147	100.990941	MAJLIS
11	XXX P9	37	5.147489	100.991109	MAJLIS
12	PROPOSE P7.5	47	5.147813	100.991149	MAJLIS
13	GB 8B P9	39	5.148222	100.991117	MAJLIS
14	GB 9B P9	39	5.148566	100.991082	MAJLIS
15	GB 10B P9	46	5.148907	100.991046	MAJLIS
16	GB 11B P9	37	5.149303	100.990976	MAJLIS
17	GB 12B P9	43	5.149622	100.990928	MAJLIS
18	PROPOSE P9	45	5.149991	100.990854	MAJLIS
19	GB 14B P9	40	5.150347	100.990681	MAJLIS
20	PROPOSE P7.5	46	5.150643	100.990491	MAJLIS
21	GB 16B P9	32	5.150963	100.990249	MAJLIS
22	PROPOSE P7.5	33	5.151188	100.990079	MAJLIS
23	GB 18B P9	26	5.15142	100.989913	MAJLIS
24	GB 19B P9	33	5.151583	100.989752	MAJLIS
25	GB 20B P9	47	5.151801	100.989568	MAJLIS
26	XXX P9	38	5.151955	100.989186	MAJLIS
27	PROPOSE P7.5	49	5.151974	100.988855	MAJLIS
28	PROPOSE P7.5	34	5.152155	100.988465	MAJLIS
29	GB 24B P9	33	5.152428	100.988355	MAJLIS
30	PROPOSE P9	10	5.152715	100.988353	MAJLIS
31	GB 25B P9	47	5.15269	100.988427	MAJLIS
32	PROPOSE P7.5	40	5.153105	100.988476	MAJLIS
33	GB 27B P9	31	5.153452	100.988425	MAJLIS
34	GB 28B P9	41	5.153722	100.988379	MAJLIS
35	GB 29B P9	50	5.154072	100.988315	MAJLIS
36	GB 30B P9	40	5.154509	100.988262	MAJLIS
37	GB 31B P9	33	5.154856	100.98822	MAJLIS
38	GB 32B P9	37	5.155141	100.988188	MAJLIS
39	GB 33B P9	39	5.155463	100.988179	MAJLIS
40	GB 34B P9	32	5.155806	100.988183	MAJLIS
41	GB 35B P9	33	5.156084	100.988223	MAJLIS
42	GB 36B P9	40	5.15636	100.98831	MAJLIS
43	GB 37B P9	46	5.156612	100.988553	MAJLIS
44	PROPOSE P7.5	34	5.15686	100.988878	MAJLIS
45	KS 32B P9	48	5.157088	100.989073	MAJLIS
46	XXX P9	37	5.157465	100.989261	MAJLIS
47	KS 30B P9	38	5.157673	100.989511	MAJLIS
48	KS 29B P9	42	5.157893	100.989767	MAJLIS
49	PROPOSE P7.5	41	5.158224	100.989927	MAJLIS
50	KS 27B P9	50	5.158495	100.990159	MAJLIS
51	PROPOSE P7.5	45	5.158718	100.990544	MAJLIS
52	KS 25B P9	43	5.15882	100.990926	MAJLIS
53	KS 24B P9	52	5.15875	100.991303	MAJLIS

APPOINTMENT AS PANEL CONTRACTOR UNDER THE BUMIPUTERA CONTRACTORS PROGRAMME FOR WORKS UNDER SCHEDULE OF RATE (“SOR”) FOR SUPPLY, INSTALLATION AND COMMISSIONING OF FTTX NETWORK INFRASTRUCTURE FOR ALLO TECHNOLOGY SDN BHD

No.	Pole & Manhole ID	Distance	Latitude	Longitude	Local Authority
54	PROPOSE P9	14	5.158705	100.99176	MAJLIS
55	XXX P9	38	5.15863	100.991674	MAJLIS
56	KS 22B P9	35	5.158756	100.991988	MAJLIS
57	KS 21B P9	32	5.158908	100.992258	MAJLIS
58	KS 20B P9	30	5.158893	100.99254	MAJLIS
59	KS 19B P9	39	5.159043	100.992759	MAJLIS
60	XXX P9	34	5.159088	100.993102	MAJLIS
61	KS 17B P9	29	5.159233	100.993366	MAJLIS
62	KS 16B P9	29	5.159335	100.9936	MAJLIS
63	KS 15B P9	27	5.159466	100.99382	MAJLIS
64	XXX P9	25	5.159542	100.994039	MAJLIS
65	PROPOSE P7.5	44	5.159608	100.994247	MAJLIS
66	PROPOSE P9	25	5.159747	100.994614	MAJLIS
67	XXX P9	62	5.159782	100.994829	MAJLIS
68	PROPOSE P7.5	36	5.160293	100.994629	MAJLIS
69	PROPOSE P7.5	68	5.159992	100.994722	MAJLIS
70	PROPOSE P7.5	16	5.160593	100.994669	MAJLIS
71	XXX P9	22	5.160649	100.994543	MAJLIS
72	XXX P9	16	5.16074	100.994381	MAJLIS
73	KS 9B/2 P9	24	5.160877	100.994368	MAJLIS
74	KS 9B/4 P9	41	5.161079	100.994334	MAJLIS
75	XXX P9	42	5.161431	100.994253	MAJLIS
76	KS 9B/5 P9	33	5.161799	100.994275	MAJLIS
77	KS 9B/7 P9	40	5.162086	100.99428	MAJLIS
78	KS 9B/8 P9	44	5.162438	100.994296	MAJLIS
79	KS 9B/9 P9	32	5.162824	100.994308	MAJLIS
80	KS 9B/10 P9	38	5.163103	100.994303	MAJLIS
81	KS 9B/11 P9	33	5.163436	100.994263	MAJLIS
82	KS 9B/12 P9	39	5.16372	100.994213	MAJLIS
83	XXX P9	43	5.164057	100.994159	MAJLIS
84	XXX P9	41	5.164427	100.994073	MAJLIS
85	XXX P9	38	5.164776	100.993991	MAJLIS
86	PROPOSE P7.5	40	5.164728	100.994318	MAJLIS
87	KS 9B/15/2 P9 BERHADAPAN SK SUPITAN		5.164626	100.994651	MAJLIS
	PROPOSE P7.5	40	5.160593	100.994669	
88	PROPOSE P7.5	37	5.160888	100.994866	JKR
89	XXX P9	36	5.161114	100.995096	JKR
90	KS 6B P9	29	5.161333	100.995328	JKR
91	XXX P9	29	5.161513	100.995503	JKR
92	XXX P9	36	5.161688	100.995679	JKR
93	PROPOSE P7.5	30	5.161978	100.99581	JKR
94	KS 2B P9	38	5.162236	100.99584	JKR
95	PROPOSE P7.5	46	5.162564	100.995873	JKR
96	KS 2A P9	42	5.162971	100.995857	JKR
97	KS 3A P9	40	5.163339	100.995853	JKR
98	KS 4A P9	37	5.163686	100.995849	JKR
99	KS 5A P9	42	5.164008	100.995864	JKR
100	KS 6A P9	46	5.164373	100.995935	JKR
101	KS 7A P9	30	5.164669	100.996206	JKR
102	KS 8A P9	33	5.164777	100.996447	JKR
103	KS 9A P9	46	5.164875	100.996717	JKR
104	KS 10A P9	34	5.16502	100.997095	JKR
105	KVT KS 16 P12	44	5.165142	100.997368	JKR

APPOINTMENT AS PANEL CONTRACTOR UNDER THE BUMIPUTERA CONTRACTORS PROGRAMME FOR WORKS UNDER SCHEDULE OF RATE (“SOR”) FOR SUPPLY, INSTALLATION AND COMMISSIONING OF FTTX NETWORK INFRASTRUCTURE FOR ALLO TECHNOLOGY SDN BHD

No.	Pole & Manhole ID	Distance	Latitude	Longitude	Local Authority
106	PROPOSE P7.5	37	5.1655	100.997513	JKR
107	KS 13A P9	41	5.165804	100.997621	JKR
108	KS 14A P9	36	5.16603	100.997905	JKR
109	XXX P9	26	5.166196	100.998173	JKR
110	PROPOSE P7.5	23	5.166274	100.99838	JKR
111	KVT KS 24 P12	26	5.166385	100.998541	JKR
112	KS 18A/1B P9	37	5.166537	100.998704	JKR
113	PROPOSE P9	18	5.166619	100.999016	JKR
114	PROPOSE P9	51	5.166474	100.998964	JKR
115	XXX P9	43	5.166495	100.999411	JKR
116	PROPOSE P7.5	51	5.166296	100.99973	JKR
117	XXX P9	27	5.165981	101.000054	JKR
118	XXX P9	42	5.165792	101.000193	JKR
119	XXX P9	39	5.165465	101.000366	JKR
120	XXX P9	29	5.165197	101.000573	JKR
121	XXX P9	44	5.165126	101.000812	JKR
122	XXX P9	40	5.165167	101.001198	JKR
123	XXX P9	20	5.165345	101.001497	JKR
124	PROPOSE P7.5	30	5.165403	101.001661	JKR
125	PROPOSE P7.5	35	5.165579	101.001854	JKR
126	PROPOSE P7.5	36	5.165769	101.002099	JKR
127	PROPOSE P7.5	34	5.16593	101.002367	JKR
128	PROPOSE P7.5	33	5.166056	101.00264	JKR
129	PROPOSE P7.5	34	5.166145	101.002911	JKR
130	PROPOSE P9	10	5.166136	101.003208	JKR
131	PROPOSE P9	29	5.166213	101.003206	JKR
132	PROPOSE P7.5	29	5.166225	101.003455	JKR
133	PROPOSE P9	11	5.166265	101.003702	JKR
134	PROPOSE P9	36	5.16618	101.003739	JKR
135	PROPOSE P7.5	33	5.166356	101.003997	JKR
136	PROPOSE P7.5	33	5.166594	101.004156	JKR
137	PROPOSE P7.5	31	5.166827	101.00433	JKR
138	PROPOSE P7.5	32	5.166854	101.004604	JKR
139	PROPOSE P7.5	33	5.166781	101.004872	JKR
140	PROPOSE P7.5	35	5.16673	101.005153	JKR
141	PROPOSE P7.5	34	5.166694	101.005461	JKR
142	PROPOSE P7.5	35	5.166677	101.005763	JKR
143	PROPOSE P7.5	34	5.16664	101.006067	JKR
144	PROPOSE P7.5	33	5.166465	101.006304	JKR
145	PROPOSE P7.5	34	5.166204	101.006434	JKR
146	PROPOSE P7.5	33	5.165934	101.006555	JKR
147	PROPOSE P7.5	32	5.165687	101.006709	JKR
148	PROPOSE P7.5	31	5.165464	101.006875	JKR
149	PROPOSE P7.5	33	5.165284	101.007077	JKR
150	PROPOSE P7.5	33	5.16523	101.007365	JKR
151	PROPOSE P7.5	34	5.165296	101.007645	JKR
152	PROPOSE P7.5	33	5.165462	101.007893	JKR
153	PROPOSE P7.5	32	5.165679	101.008089	JKR
154	PROPOSE P7.5	32	5.165857	101.008309	JKR
155	PROPOSE P7.5	34	5.166061	101.008506	JKR
156	PROPOSE P7.5	34	5.166325	101.008635	JKR
157	PROPOSE P7.5	34	5.166603	101.00873	JKR
158	PROPOSE P7.5	35	5.166893	101.008806	JKR
159	PROPOSE P7.5	32	5.167174	101.008938	JKR

APPOINTMENT AS PANEL CONTRACTOR UNDER THE BUMIPUTERA CONTRACTORS PROGRAMME FOR WORKS UNDER SCHEDULE OF RATE (“SOR”) FOR SUPPLY, INSTALLATION AND COMMISSIONING OF FTTX NETWORK INFRASTRUCTURE FOR ALLO TECHNOLOGY SDN BHD

No.	Pole & Manhole ID	Distance	Latitude	Longitude	Local Authority
160	PROPOSE P7.5	29	5.167354	101.009154	JKR
161	PROPOSE P7.5	32	5.167425	101.009396	JKR
162	PROPOSE P7.5	31	5.167462	101.009671	JKR
163	PROPOSE P7.5	33	5.167511	101.009938	JKR
164	PROPOSE P7.5	35	5.16756	101.010221	JKR
165	PROPOSE P7.5	34	5.167572	101.010527	JKR
166	PROPOSE P7.5	35	5.167614	101.010826	JKR
167	PROPOSE P7.5	34	5.167596	101.011135	JKR
168	PROPOSE P7.5	20	5.167522	101.011427	JKR
169	PROPOSE P9	29	5.167397	101.01155	JKR
170	PROPOSE P9	47	5.167515	101.011772	JKR
171	KM 2/7/7 P9	29	5.167727	101.012131	JKR
172	PROPOSE P9	50	5.167616	101.012353	JKR
173	KM 2/6 P9	41	5.167324	101.012684	JKR
174	KM 2/5 P9	42	5.167118	101.01298	JKR
175	KM 2/4 P9	41	5.167045	101.01334	JKR
176	XXX P9	38	5.167051	101.013701	JKR
177	XXX P9	42	5.167065	101.014035	JKR
178	XXX P9	47	5.167085	101.014406	JKR
179	XXX P9	26	5.167192	101.014806	JKR
180	PROPOSE P7.5	36	5.167	101.014694	JKR
181	PG 1 P9	39	5.166702	101.014584	JKR
182	PROPOSE P7.5	25	5.166382	101.014475	JKR
183	PROPOSE P7.5	26	5.166178	101.014417	JKR
184	XXX P9	39	5.16596	101.014459	JKR
185	PG 3 P9	49	5.165619	101.014456	JKR
186	PG 4 P9	48	5.165203	101.014358	MAJLIS
187	XXX P9	35	5.164798	101.014232	MAJLIS
188	PROPOSE P7.5	43	5.164495	101.014206	MAJLIS
189	PG 6 P9	29	5.164119	101.014182	MAJLIS
190	PROPOSE P7.5	26	5.163865	101.014162	MAJLIS
191	PG 8 P9 BERHADAPAN SJKC PADANG GRUS		5.163648	101.014117	MAJLIS
	XXX P9	35	5.167192	101.014806	
192	XXX P9	42	5.16717	101.015114	JKR
193	XXX P9	45	5.167291	101.015461	JKR
194	PROPOSE P7.5	43	5.167605	101.01571	JKR
195	XXX P9	36	5.167913	101.015925	JKR
196	XXX P9	36	5.168174	101.016099	JKR
197	XXX P9	35	5.168428	101.016283	JKR
198	XXX P9	50	5.168673	101.016462	JKR
199	XXX P9	49	5.169034	101.01671	JKR
200	XXX P9	49	5.169374	101.016973	JKR
201	XXX P9	41	5.169725	101.01723	JKR
202	XXX P9	53	5.169974	101.017488	JKR
203	XXX P9	47	5.170022	101.017956	JKR
204	XXX P9	50	5.170066	101.018372	JKR
205	PROPOSE P7.5	45	5.170115	101.018808	JKR
206	XXX P9	49	5.17015	101.019208	JKR
207	XXX P9	42	5.169993	101.019616	JKR
208	XXX P9	50	5.169781	101.01992	JKR
209	XXX P9	22	5.169541	101.020293	JKR
210	XXX P9	35	5.169385	101.020406	JKR
211	XXX P9	28	5.169289	101.020693	JKR
212	XXX P9	29	5.169198	101.020923	JKR
213	XXX P9	60	5.169102	101.021153	JKR

APPOINTMENT AS PANEL CONTRACTOR UNDER THE BUMIPUTERA CONTRACTORS PROGRAMME FOR WORKS UNDER SCHEDULE OF RATE (“SOR”) FOR SUPPLY, INSTALLATION AND COMMISSIONING OF FTTX NETWORK INFRASTRUCTURE FOR ALLO TECHNOLOGY SDN BHD

No.	Pole & Manhole ID	Distance	Latitude	Longitude	Local Authority
214	XXX P9	38	5.168676	101.021468	JKR
215	XXX P9	37	5.16837	101.021606	JKR
216	PROPOSE P7.5	35	5.168135	101.021827	JKR
217	KS 18A 8 2 P9	36	5.168109	101.022135	JKR
218	KS 18A 8 3 P9	36	5.168207	101.022434	JKR
219	XXX P9	33	5.168335	101.022718	JKR
220	XXX P9	31	5.168447	101.022989	JKR
221	XXX P9	31	5.168558	101.023238	JKR
222	XXX P9	32	5.16867	101.023488	JKR
223	XXX P9	42	5.168819	101.023721	JKR
224	XXX P9	32	5.169043	101.024019	JKR
225	XXX P9	33	5.169205	101.02425	JKR
226	PROPOSE P9	26	5.169409	101.024457	JKR
227	PROPOSE P9	45	5.169541	101.024641	JKR
228	XXX P9	41	5.169443	101.025023	JKR
229	PROPOSE P7.5	32	5.169384	101.02538	JKR
230	XXX P9	39	5.169355	101.025657	JKR
231	PROPOSE P9	35	5.16933	101.026001	JKR
232	XXX P9	31	5.1693	101.026304	JKR
233	XXX P9	38	5.169294	101.026578	JKR
234	XXX P9	41	5.169286	101.026916	JKR
235	XXX P9	36	5.169306	101.027275	JKR
236	PROPOSE P7.5	35	5.169325	101.02759	JKR
237	PROPOSE P7.5	43	5.169342	101.027899	JKR
238	PROPOSE P9	36	5.169407	101.028269	JKR
239	SP 34B P9	33	5.169456	101.028578	JKR
240	SP 33B P9	33	5.169513	101.028864	JKR
241	SP 32B P9	34	5.169582	101.029149	JKR
242	SP 31B P9	32	5.169639	101.029441	JKR
243	SP 30B P9	34	5.169724	101.029707	JKR
244	SP 29B P9	41	5.169802	101.02999	JKR
245	SP 28B P9	39	5.169946	101.030323	JKR
246	SP 27B P9	46	5.170085	101.030638	JKR
247	PROPOSE P9	40	5.170266	101.031002	JKR
248	SP 25B P9	37	5.17044	101.031306	JKR
249	SP 24B P9	40	5.170599	101.031584	JKR
250	SP 23B P9	37	5.170798	101.031872	JKR
251	SP 22B P9	37	5.170983	101.032138	JKR
252	SP 21B P9	37	5.171177	101.032397	JKR
253	SP 20B P9	37	5.171371	101.032652	JKR
254	SP 19B P9	36	5.17157	101.032911	JKR
255	SP18B P9	37	5.171767	101.033163	JKR
256	SP 17B P9	37	5.171968	101.033416	JKR
257	SP 16B P9	36	5.172158	101.033682	JKR
258	SP 15B P9	37	5.172356	101.033929	JKR
259	SP 14B P9	35	5.172554	101.034187	JKR
260	SP 13B P9	37	5.172746	101.034424	JKR
261	SP 12B P9	36	5.172943	101.034684	JKR
262	SP 11B P9	36	5.173142	101.034926	JKR
263	SP 10B P9	36	5.173335	101.035174	JKR
264	SP 9B P9	34	5.173536	101.035415	JKR
265	SP 8B P9	35	5.173721	101.035649	JKR
266	SP7B P9	24	5.173908	101.035887	JKR

APPOINTMENT AS PANEL CONTRACTOR UNDER THE BUMIPUTERA CONTRACTORS PROGRAMME FOR WORKS UNDER SCHEDULE OF RATE (“SOR”) FOR SUPPLY, INSTALLATION AND COMMISSIONING OF FTTX NETWORK INFRASTRUCTURE FOR ALLO TECHNOLOGY SDN BHD

No.	Pole & Manhole ID	Distance	Latitude	Longitude	Local Authority
267	SP 6B P9	23	5.174049	101.036045	JKR
268	SP 5B P9	30	5.17415	101.036216	JKR
269	SP 4B P9	32	5.174287	101.036435	JKR
270	SP 3B P9	25	5.17444	101.036664	JKR
271	PROPOSE P9	25	5.174655	101.036652	MAJLIS
272	SP 1A P9	28	5.174873	101.036668	MAJLIS
273	PROPOSE P7.5	46	5.175101	101.036746	MAJLIS
274	PROPOSE P9	49	5.175499	101.036797	MAJLIS
275	SP 3A P9	42	5.175929	101.036802	MAJLIS
276	XXX P9	43	5.176287	101.036893	MAJLIS
277	SP 5A P9	42	5.176606	101.037096	MAJLIS
278	PROPOSE P9	31	5.176833	101.037389	MAJLIS
279	XXX P9	47	5.177007	101.037601	MAJLIS
280	XXX P9	32	5.177374	101.037783	MAJLIS
281	XXX P9	28	5.177631	101.037881	MAJLIS
282	PROPOSE P7.5	39	5.177871	101.037925	MAJLIS
283	SP 10A P9	40	5.17821	101.037874	MAJLIS
284	PROPOSE P7.5	41	5.178524	101.037725	MAJLIS
285	SP 12A P9	41	5.178855	101.037577	MAJLIS
286	XXX P9	39	5.179186	101.037437	MAJLIS
287	XXX P9	18	5.179511	101.037342	MAJLIS
288	PROPOSE P7.5	41	5.17966	101.037347	MAJLIS
289	SP 15A/1 P9BERHADAPAN SJKC SELAT PAGAR		5.180011	101.03726	MAJLIS
	PROPOSE P9	11	5.174655	101.036652	
290	PROPOSE P9	24	5.174686	101.036738	JKR
291	XXX P9	33	5.17477	101.036924	JKR
292	XXX P9	29	5.174842	101.037202	JKR
293	XXX P9	25	5.174922	101.037437	JKR
294	XXX P9	27	5.175007	101.037633	JKR
295	XXX P9	30	5.175111	101.037843	JKR
296	XXX P9	26	5.17522	101.038079	JKR
297	XXX P9	26	5.175311	101.038284	JKR
298	XXX P9	26	5.17539	101.038497	JKR
299	XXX P9	27	5.175469	101.038706	JKR
300	XXX P9	27	5.175552	101.038923	JKR
301	XXX P9	28	5.175637	101.039141	JKR
302	XXX P9	27	5.175727	101.039363	JKR
303	XXX P9	26	5.17582	101.039577	JKR
304	XXX P9	27	5.175899	101.039785	JKR
305	XXX P9	28	5.175982	101.040002	JKR
306	PROPOSE P7.5	27	5.176078	101.040225	JKR
307	XXX P9	26	5.176166	101.040438	JKR
308	XXX P9	27	5.176253	101.040649	JKR
309	XXX P9	28	5.176346	101.040867	JKR
310	XXX P9	26	5.176428	101.041098	JKR
311	XXX P9	28	5.176507	101.041305	JKR
312	XXX P9	27	5.176601	101.041525	JKR
313	XXX P9	26	5.176678	101.041746	JKR
314	XXX P9	27	5.17677	101.041951	JKR
315	XXX P9	25	5.176855	101.042166	JKR
316	XXX P9	27	5.176939	101.042369	JKR
317	XXX P9	27	5.177023	101.042592	JKR
318	XXX P9	25	5.177125	101.042806	JKR

APPOINTMENT AS PANEL CONTRACTOR UNDER THE BUMIPUTERA CONTRACTORS PROGRAMME FOR WORKS UNDER SCHEDULE OF RATE (“SOR”) FOR SUPPLY, INSTALLATION AND COMMISSIONING OF FTTX NETWORK INFRASTRUCTURE FOR ALLO TECHNOLOGY SDN BHD

No.	Pole & Manhole ID	Distance	Latitude	Longitude	Local Authority
319	XXX P9	27	5.177208	101.043006	JKR
320	XXX P9	21	5.177313	101.043212	JKR
321	PROPOSE P9	25	5.177438	101.043341	JKR
322	PROPOSE P9	38	5.17752	101.043542	JKR
323	PROPOSE P7.5	40	5.17769	101.043825	JKR
324	PROPOSE P7.5	36	5.177883	101.044118	JKR
325	PROPOSE P7.5	34	5.178077	101.04437	JKR
326	PROPOSE P7.5	36	5.178265	101.044599	JKR
327	PROPOSE P7.5	42	5.178482	101.044832	JKR
328	PROPOSE P7.5	30	5.178742	101.045096	JKR
329	PROPOSE P7.5	35	5.178934	101.045277	JKR
330	PROPOSE P7.5	36	5.179173	101.04547	JKR
331	PROPOSE P7.5	35	5.17942	101.045661	JKR
332	PROPOSE P7.5	37	5.179676	101.045836	JKR
333	PROPOSE P7.5	34	5.179943	101.046016	JKR
334	PROPOSE P7.5	37	5.1802	101.046158	JKR
335	PROPOSE P7.5	39	5.180483	101.046324	JKR
336	PROPOSE P7.5	35	5.180782	101.046492	JKR
337	PROPOSE P7.5	36	5.181047	101.04665	JKR
338	PROPOSE P7.5	36	5.181324	101.046793	JKR
339	PROPOSE P7.5	37	5.181598	101.046947	JKR
340	PROPOSE P7.5	39	5.181878	101.047105	JKR
341	PROPOSE P9	38	5.182175	101.047273	JKR
342	PROPOSE P9	35	5.182458	101.047444	JKR
343	PROPOSE P7.5	43	5.182722	101.047594	JKR
344	XXX P9	28	5.183053	101.047783	JKR
345	PROPOSE P7.5	36	5.183255	101.04792	JKR
346	PROPOSE P7.5	37	5.183508	101.048113	JKR
347	PROPOSE P7.5	36	5.183762	101.048312	JKR
348	PROPOSE P7.5	36	5.184005	101.048517	JKR
349	PROPOSE P7.5	39	5.18423	101.048737	JKR
350	PROPOSE P7.5	34	5.184468	101.048982	JKR
351	PROPOSE P7.5	38	5.184668	101.049201	JKR
352	PROPOSE P7.5	37	5.184877	101.049457	JKR
353	PROPOSE P7.5	36	5.185069	101.049714	JKR
354	PROPOSE P7.5	36	5.185262	101.049965	JKR
355	PROPOSE P7.5	36	5.185441	101.05022	JKR
356	PROPOSE P7.5	36	5.185631	101.050474	JKR
357	PROPOSE P7.5	33	5.185818	101.050732	JKR
358	PROPOSE P7.5	37	5.185981	101.050969	JKR
359	PROPOSE P7.5	36	5.186168	101.051234	JKR
360	PROPOSE P7.5	39	5.186361	101.051485	JKR
361	PROPOSE P7.5	37	5.186564	101.051758	JKR
362	PROPOSE P7.5	35	5.186745	101.052023	JKR
363	PROPOSE P7.5	36	5.186922	101.052273	JKR
364	PROPOSE P7.5	36	5.187109	101.052531	JKR
365	PROPOSE P7.5	37	5.187299	101.052782	JKR
366	PROPOSE P7.5	35	5.187498	101.053041	JKR
367	PROPOSE P7.5	39	5.187668	101.053301	JKR
368	PROPOSE P7.5	30	5.187867	101.053576	JKR
369	PROPOSE P7.5	36	5.188023	101.053787	JKR
370	PROPOSE P7.5	35	5.188215	101.054039	JKR
371	PROPOSE P7.5	37	5.188379	101.054302	JKR

APPOINTMENT AS PANEL CONTRACTOR UNDER THE BUMIPUTERA CONTRACTORS PROGRAMME FOR WORKS UNDER SCHEDULE OF RATE (“SOR”) FOR SUPPLY, INSTALLATION AND COMMISSIONING OF FTTX NETWORK INFRASTRUCTURE FOR ALLO TECHNOLOGY SDN BHD

No.	Pole & Manhole ID	Distance	Latitude	Longitude	Local Authority
372	PROPOSE P7.5	38	5.188586	101.05455	JKR
373	PROPOSE P7.5	40	5.188779	101.054819	JKR
374	PROPOSE P9	35	5.188992	101.055098	JKR
375	PROPOSE P9	32	5.189184	101.055337	JKR
376	PROPOSE P7.5	37	5.189337	101.055568	JKR
377	PROPOSE P7.5	38	5.189522	101.055834	JKR
378	PROPOSE P7.5	39	5.189727	101.056096	JKR
379	PROPOSE P7.5	36	5.189925	101.056373	JKR
380	PROPOSE P9	35	5.190109	101.056626	JKR
381	PROPOSE P9	37	5.190324	101.056841	JKR
382	PROPOSE P7.5	38	5.190505	101.05711	JKR
383	PROPOSE P7.5	36	5.190712	101.057373	JKR
384	PROPOSE P7.5	29	5.190908	101.05762	JKR
385	PROPOSE P7.5	35	5.191056	101.057828	JKR
386	XXX P9	40	5.191287	101.058031	MAJLIS
387	XXX P9	37	5.191566	101.057823	MAJLIS
388	XXX P9	64	5.191785	101.057578	MAJLIS
389	XXX P9	103	5.191456	101.058043	MAJLIS
390	AKB 7 P9	40	5.192286	101.05766	MAJLIS
391	AKB 6 P9	21	5.192623	101.057754	MAJLIS
392	PROPOSE P7.5	25	5.192784	101.057841	MAJLIS
393	AKB 4 P9	46	5.192975	101.057942	MAJLIS
394	PROPOSE P7.5	46	5.193344	101.058118	MAJLIS
395	PROPOSE P7.5	43	5.19373	101.058253	MAJLIS
396	XXX P9	33	5.194091	101.058374	MAJLIS
397	PROPOSE P7.5	32	5.194336	101.05823	MAJLIS
398	PROPOSE P7.5	22	5.194545	101.058048	MAJLIS
399	PROPOSE P7.5	28	5.194692	101.057923	MAJLIS
400	PROPOSE P7.5	31	5.19487	101.057753	MAJLIS
401	PROPOSE P7.5	30	5.195063889	101.0575611	MAJLIS
402	PROPOSE P7.5	50	5.195236	101.057363	MAJLIS
403	PROPOSE P7.5	52	5.195181	101.056926	MAJLIS
404	PROPOSE P7.5	41	5.19507	101.056475	MAJLIS
405	PROPOSE P7.5	43	5.195005	101.056118	MAJLIS
406	PROPOSE P7.5	31	5.195372	101.056011	MAJLIS
407	PROPOSE P7.5	24	5.195633	101.055945	MAJLIS
408	XXX P9	46	5.195834	101.055913	MAJLIS
409	XXX P9 BERHADAPAN SJKC AYER KALA		5.196231	101.055838	MAJLIS
	XXX P9	17	5.195834	101.055913	
410	AK 5A/3/3/1 P9	28	5.195851	101.056054	MAJLIS
411	XXX P9	18	5.195905	101.056296	MAJLIS
412	PROPOSE P7.5	33	5.195977	101.056429	MAJLIS
413	XXX P7	36	5.196038	101.056712	MAJLIS
414	PROPOSE P9	11	5.196085	101.057025	MAJLIS
415	XXX P9	48	5.196107	101.05711	MAJLIS
416	PROPOSE P9	31	5.196199	101.057526	MAJLIS
417	PROPOSE P9	24	5.19626	101.05779	MAJLIS
418	PL 33 P9	30	5.196274	101.057995	MAJLIS
419	PROPOSE P9	41	5.196173	101.058235	MAJLIS
420	PROPOSE P7.5	10	5.19611	101.058588	MAJLIS
421	AK A 8/9 P9	38	5.196057	101.058654	MAJLIS
422	XXX P9	35	5.196126	101.058983	MAJLIS
423	AK A 8/10 P9	42	5.196151	101.059291	MAJLIS

APPOINTMENT AS PANEL CONTRACTOR UNDER THE BUMIPUTERA CONTRACTORS PROGRAMME FOR WORKS UNDER SCHEDULE OF RATE (“SOR”) FOR SUPPLY, INSTALLATION AND COMMISSIONING OF FTTX NETWORK INFRASTRUCTURE FOR ALLO TECHNOLOGY SDN BHD

No.	Pole & Manhole ID	Distance	Latitude	Longitude	Local Authority
424	AK A 8/11 P9	26	5.196413	101.059549	MAJLIS
425	AK A 3/11 P9	36	5.196617	101.059654	MAJLIS
426	AK A 8/12 P9	29	5.19688	101.05983	MAJLIS
427	PROPOSE P9	37	5.197029	101.060039	JKR
428	PROPOSE P7.5	37	5.197342	101.06012	JKR
429	PROPOSE P7.5	37	5.197656	101.060213	JKR
430	PROPOSE P7.5	37	5.197959	101.060327	JKR
431	PROPOSE P7.5	33	5.198254	101.060455	JKR
432	PROPOSE P7.5	31	5.198524	101.060564	JKR
433	VT 27 P9	31	5.198764	101.060679	JKR
434	VT 28 P9	31	5.199002	101.0608	JKR
435	VT 29 P9	36	5.199236	101.060942	JKR
436	VT 30 P9	31	5.1995	101.061115	JKR
437	EAK A 5/7 P9	38	5.199721	101.061278	JKR
438	EAK A 5/6 P9	39	5.199982	101.06148	JKR
439	EAK A 5/5 P9	38	5.200238	101.061704	JKR
440	EAK A 5/4 P9	37	5.20049	101.061923	JKR
441	EAK A 5/3 P9	38	5.200725	101.062152	JKR
442	EAK A 5/2 P9	36	5.200953	101.062393	JKR
443	EAK A 5/1 P9	28	5.201173	101.062622	JKR
444	VT 73/1 P9	22	5.201396	101.06271	JKR
445	PROPOSE P9	36	5.20144	101.062893	JKR
446	PROPOSE P7.5	43	5.201664	101.063118	JKR
447	PROPOSE P7.5	35	5.201928	101.063388	JKR
448	PROPOSE P7.5	38	5.202138	101.063606	JKR
449	PROPOSE P7.5	36	5.202376	101.06384	JKR
450	PROPOSE P7.5	40	5.202607	101.06406	JKR
451	PROPOSE P7.5	36	5.202855	101.064313	JKR
452	PROPOSE P7.5	35	5.203082	101.064529	JKR
453	PROPOSE P7.5	36	5.203295	101.064754	JKR
454	PROPOSE P7.5	36	5.203517	101.064977	JKR
455	PROPOSE P7.5	37	5.203737	101.065203	JKR
456	PROPOSE P7.5	34	5.203971	101.065425	JKR
457	PROPOSE P7.5	36	5.204174	101.065645	JKR
458	PROPOSE P7.5	34	5.204401	101.065866	JKR
459	PROPOSE P7.5	36	5.204622	101.066063	JKR
460	PROPOSE P7.5	35	5.204856	101.066269	JKR
461	PROPOSE P7.5	38	5.205102	101.066455	JKR
462	PROPOSE P7.5	40	5.205389	101.066622	JKR
463	PROPOSE P9	35	5.205709	101.066755	JKR
464	PROPOSE P7.5	35	5.205996	101.066863	JKR
465	PROPOSE P7.5	38	5.206286	101.066955	JKR
466	PROPOSE P7.5	36	5.206615	101.066998	JKR
467	PROPOSE P9	37	5.206924	101.067029	JKR
468	PROPOSE P9	37	5.207245	101.067042	JKR
469	PROPOSE P7.5	35	5.207571	101.06705	JKR
470	PROPOSE P7.5	35	5.207875	101.06707	JKR
471	PROPOSE P7.5	36	5.208185	101.067061	JKR
472	PROPOSE P7.5	37	5.208501	101.067073	JKR
473	PROPOSE P7.5	36	5.208827	101.067064	JKR
474	PROPOSE P7.5	39	5.209141	101.067067	JKR
475	PROPOSE P7.5	38	5.209479	101.06709	JKR
476	PROPOSE P7.5	40	5.209809	101.067098	JKR

APPOINTMENT AS PANEL CONTRACTOR UNDER THE BUMIPUTERA CONTRACTORS PROGRAMME FOR WORKS UNDER SCHEDULE OF RATE (“SOR”) FOR SUPPLY, INSTALLATION AND COMMISSIONING OF FTTX NETWORK INFRASTRUCTURE FOR ALLO TECHNOLOGY SDN BHD

No.	Pole & Manhole ID	Distance	Latitude	Longitude	Local Authority
477	PROPOSE P7.5	35	5.210158	101.067107	JKR
478	PROPOSE P7.5	38	5.210465	101.067106	JKR
479	PROPOSE P7.5	37	5.210794	101.067114	JKR
480	PROPOSE P7.5	36	5.211116	101.06713	JKR
481	PROPOSE P7.5	39	5.21143	101.067149	JKR
482	PROPOSE P7.5	34	5.211774	101.067179	JKR
483	PROPOSE P7.5	36	5.212062	101.067235	JKR
484	PROPOSE P7.5	39	5.212365	101.067304	JKR
485	PROPOSE P7.5	36	5.212696	101.067399	JKR
486	PROPOSE P7.5	37	5.212997	101.067495	JKR
487	PROPOSE P7.5	39	5.2133	101.067601	JKR
488	PROPOSE P7.5	43	5.213614	101.067731	JKR
489	PROPOSE P7.5	31	5.213961	101.067878	JKR
490	PROPOSE P7.5	33	5.21421	101.067985	JKR
491	PROPOSE P7.5	35	5.214476	101.068095	JKR
492	PROPOSE P7.5	38	5.214752	101.068231	JKR
493	PROPOSE P7.5	41	5.215064	101.068349	JKR
494	XXX P9	23	5.2154	101.068489	JKR
495	PROPOSE P9	35	5.215586	101.068558	JKR
496	PROPOSE P7.5	36	5.215868	101.068675	JKR
497	PROPOSE P7.5	35	5.216162	101.06878	JKR
498	PROPOSE P7.5	37	5.216443	101.068912	JKR
499	PROPOSE P7.5	35	5.216746	101.069022	JKR
500	PROPOSE P7.5	34	5.21703	101.069146	JKR
501	PROPOSE P7.5	31	5.217296	101.069271	JKR
502	PROPOSE P7.5	32	5.21755	101.069371	JKR
503	PROPOSE P7.5	31	5.217804	101.06948	JKR
504	PROPOSE P7.5	30	5.218049	101.069595	JKR
505	PROPOSE P7.5	31	5.218294	101.069693	JKR
506	PROPOSE P7.5	30	5.218546	101.069789	JKR
507	PROPOSE P7.5	40	5.218786	101.069895	JKR
508	KKE 1A/31/8/1 P9	32	5.219108	101.07004	JKR
509	XXX P9	38	5.219353	101.07018	JKR
510	XXX P9	34	5.219671	101.070282	JKR
511	XXX P9	35	5.219958	101.070372	JKR
512	VT K18 P9	36	5.220253	101.070452	JKR
513	VT K19 P9	31	5.220564	101.070522	JKR
514	VT K20 P9	30	5.220832	101.070566	JKR
515	XXX P9	28	5.221092	101.07061	JKR
516	VT K22 P9	30	5.221333	101.070644	JKR
517	VT K23 P9	30	5.221595	101.070667	JKR
518	VT K24 P9	31	5.221854	101.07068	JKR
519	VT K25 P9	28	5.222126	101.070704	JKR
520	VT K26 P9	31	5.22237	101.070711	JKR
521	VT K27 P9	31	5.222643	101.070708	JKR
522	PROPOSE P9	59	5.222913	101.070704	JKR
523	XXX P9	46	5.223432	101.070691	JKR
524	KKEN 1A/25 P9	35	5.223836	101.070684	JKR
525	XXX P9	38	5.22414	101.070679	JKR
526	XXX P9	42	5.224477	101.070677	JKR
527	KKEN 1A/22/1 P9	28	5.224849	101.070693	JKR
528	PROPOSE P9	17	5.225087	101.070707	JKR
529	VT K37 P10	30	5.225137	101.070839	JKR

APPOINTMENT AS PANEL CONTRACTOR UNDER THE BUMIPUTERA CONTRACTORS PROGRAMME FOR WORKS UNDER SCHEDULE OF RATE (“SOR”) FOR SUPPLY, INSTALLATION AND COMMISSIONING OF FTTX NETWORK INFRASTRUCTURE FOR ALLO TECHNOLOGY SDN BHD

No.	Pole & Manhole ID	Distance	Latitude	Longitude	Local Authority
530	XXX P10	43	5.225309	101.071030	JKR
531	XXX P9	37	5.225657	101.070880	JKR
532	XXX P10	41	5.225982	101.070915	JKR
533	XXX P10	27	5.226342	101.070954	JKR
534	VT K42 P9	33	5.226577	101.070978	JKR
535	XXX P10	22	5.226865	101.071007	JKR
536	KKEN 1A/14/2 P9	35	5.227053	101.071026	JKR
537	VT K45 P12	27	5.22736	101.071051	JKR
538	VT K46 P12	29	5.227589	101.071076	JKR
539	VT K47 P12	32	5.227843	101.071102	JKR
540	XXX	29	5.228118	101.071123	JKR
541	VT K49 P12	30	5.228369	101.071144	JKR
542	VT K50 P12	29	5.228624	101.071176	JKR
543	XXX P12	43	5.228872	101.071192	JKR
544	XXX P9	58	5.229246	101.071235	JKR
545	VT K53 P12	29	5.229722	101.071419	JKR
546	VT K54 P12	31	5.229969	101.071451	JKR
547	VT K55 P12	23	5.230227	101.071528	JKR
548	XXX P9	19	5.230352	101.071677	JKR
549	VT K56 P12	25	5.230492	101.071604	JKR
550	XXX	19	5.230593	101.071416	JKR
551	HT KNR-AJD 109 P12	31	5.230753	101.071431	JKR
552	XXX	30	5.231021	101.07146	JKR
553	HT KNR-AJD 97 P12	32	5.231281	101.071496	JKR
554	XXX	31	5.231559	101.07153	JKR
555	HT KNR-AJD 105 P12	59	5.231828	101.071547	JKR
556	KKEN 7 P9	43	5.232347	101.071612	JKR
557	KKE 8 P9	39	5.232721	101.071657	JKR
558	HT KNR-AJD 102 P12	31	5.233064	101.071682	JKR
559	HT KNR-AJD 101 P12	33	5.233332	101.071726	JKR
560	HT KNR-AJD 100 P12	33	5.233618	101.071753	JKR
561	HT KNR-AJD 99 P12	31	5.233903	101.07179	JKR
562	HT KNR-AJD 98 P12	29	5.234168	101.071822	JKR
563	XXX	33	5.234419	101.071852	JKR
564	PROPOSE P7.5	32	5.234705	101.071896	JKR
565	XXX	30	5.234982	101.071917	JKR
566	XXX	32	5.235242	101.071934	JKR
567	HT KNR-AJD 93 P12	29	5.23552	101.071941	JKR
568	HT KNR-AJD 92 P12	33	5.235776	101.071943	JKR
569	XXX	31	5.236067	101.07193	JKR
570	XXX	30	5.236335	101.071917	JKR
571	XXX	32	5.236592	101.071893	JKR
572	HT KNR-AJD 88 P12	31	5.236867	101.071865	JKR
573	HT KNR-AJD 87 P12	30	5.237139	101.071841	JKR
574	HT KNR-AJD 86 P12	32	5.2374	101.071816	JKR
575	HT KNR-AJD 85 P12	32	5.237679	101.071789	JKR
576	HT KNR-AJD 84 P12	31	5.237959	101.071765	JKR
577	XXX	33	5.238226	101.071732	JKR
578	XXX	30	5.238514	101.071708	JKR
579	HT KNR-AJD 81 P12	33	5.23877	101.071684	JKR
580	PROPOSE P9	31	5.239055	101.071658	JKR
581	HT KNR-AJD 79 P12	31	5.239326	101.071641	JKR
582	HT KNR-AJD 78 P12	31	5.239597	101.071619	JKR
583	HT KNR-AJD 77 P12	29	5.239864	101.071598	JKR
584	HT KNR-AJD 76 P12	34	5.240117	101.071573	JKR
585	HT KNR-AJD 75 P12	31	5.240414	101.071536	JKR

APPOINTMENT AS PANEL CONTRACTOR UNDER THE BUMIPUTERA CONTRACTORS PROGRAMME FOR WORKS UNDER SCHEDULE OF RATE (“SOR”) FOR SUPPLY, INSTALLATION AND COMMISSIONING OF FTTX NETWORK INFRASTRUCTURE FOR ALLO TECHNOLOGY SDN BHD

No.	Pole & Manhole ID	Distance	Latitude	Longitude	Local Authority
586	HT KNR-AJD 74 P12	30	5.24068	101.0715	JKR
587	HT KNR-AJD 73 P12	30	5.240943	101.071465	JKR
588	HT KNR-AJD 72 P12	33	5.241204	101.071435	JKR
589	HT KNR-AJD 71 P12	30	5.241486	101.071399	JKR
590	HT KNR-AJD 70 P12	32	5.241745	101.07136	JKR
591	HT KNR-AJD 69 P12	33	5.242021	101.071324	JKR
592	HT KNR-AJD 68 P12	32	5.242302	101.071282	JKR
593	HT KNR-AJD 67 P12	31	5.242578	101.071242	JKR
594	HT KNR-AJD 66 P12	30	5.242843	101.071198	JKR
595	HT KNR-AJD 65 P12	31	5.243099	101.071158	JKR
596	PROPOSE P7.5	31	5.243361	101.071115	JKR
597	HT KNR-AJD 63 P12	34	5.243628	101.071075	JKR
598	HT KNR-AJD 62 P12	32	5.243913	101.071006	JKR
599	HT KNR-AJD 61 P12	29	5.244184	101.070963	JKR
600	HT KNR-AJD 60 P12	34	5.244431	101.070919	JKR
601	HT KNR-AJD 59 P12	28	5.244724	101.070876	JKR
602	HT KNR-AJD 58 P12	33	5.244967	101.070834	JKR
603	HT KNR-AJD 57 P12	29	5.245245	101.070769	JKR
604	HT KNR-AJD 56 P12	31	5.245498	101.070729	JKR
605	HT KNR-AJD 55 P12	34	5.245765	101.07067	JKR
606	HT KNR-AJD 54 P12	28	5.246055	101.070623	JKR
607	HT KNR-AJD 53 P12	29	5.246292	101.070575	JKR
608	HT KNR-AJD 52 P12	39	5.246539	101.070536	JKR
609	KAJ 50 P9	46	5.246873	101.070483	JKR
610	KAJ 49 P9	37	5.247266	101.070404	JKR
611	KAJ 48 P9	33	5.247571	101.070306	JKR
612	KAJ 47 P9	35	5.247847	101.070216	JKR
613	KAJ 46 P9	35	5.248132	101.070096	JKR
614	KAJ 45 P9	30	5.248409	101.069966	JKR
615	KAJ 44 P9	33	5.248644	101.069848	JKR
616	KAJ 43 P9	29	5.248882	101.069687	JKR
617	KAJ 42 P9	29	5.249084	101.069532	JKR
618	KAJ 41 P9	31	5.249286	101.069379	JKR
619	KAJ 40 P9	31	5.249494	101.069206	JKR
620	KAJ 39 P9	32	5.249701	101.069032	JKR
621	KAJ 38 P9	19	5.24993	101.068877	JKR
622	KAJ 37 P9	18	5.250062	101.068787	JKR
623	KAJ 36 P9	18	5.250195	101.068713	JKR
624	KAJ 35 P9	21	5.250322	101.068627	JKR
625	KAJ 34 P9	18	5.250476	101.068538	JKR
626	KAJ 32 P9	17	5.250611	101.068473	JKR
627	KAJ 31 P9	20	5.250738	101.068413	JKR
628	KAJ 30 P9	22	5.250898	101.068344	JKR
629	KAJ 29 P9	21	5.251076	101.068282	JKR
630	KAJ 28 P9	23	5.251239	101.068209	JKR
631	KAJ 27 P9	25	5.251431	101.068157	JKR
632	KAJ 26 P9	26	5.251639	101.068099	JKR
633	KAJ 25 P9	26	5.25186	101.068053	JKR
634	KAJ 24 P9	28	5.252086	101.068022	JKR
635	KAJ 23 P9	29	5.252322	101.067986	JKR
636	KAJ 22 P9	28	5.252568	101.067959	JKR
637	KAJ 21 P9	26	5.252803	101.067916	JKR
638	KAJ 20 P9	26	5.253024	101.06787	JKR
639	KAJ 19 P9	29	5.253244	101.067838	JKR
640	KAJ 18 P9	26	5.253489	101.06778	JKR
641	KAJ 17 P9	19	5.253712	101.067747	JKR

APPOINTMENT AS PANEL CONTRACTOR UNDER THE BUMIPUTERA CONTRACTORS PROGRAMME FOR WORKS UNDER SCHEDULE OF RATE (“SOR”) FOR SUPPLY, INSTALLATION AND COMMISSIONING OF FTTX NETWORK INFRASTRUCTURE FOR ALLO TECHNOLOGY SDN BHD

No.	Pole & Manhole ID	Distance	Latitude	Longitude	Local Authority
642	KAJ 16/1 P9	19	5.253869	101.067732	JKR
643	HT KNR-AJD 22 P12	30	5.254029	101.06771	JKR
644	HT KNR-AJD 21 P12	34	5.254291	101.067677	JKR
645	HT KNR-AJD 20 P12	26	5.254581	101.067631	JKR
646	HT KNR-AJD 19 P12	34	5.254808	101.067647	JKR
647	HT KNR-AJD 18 P12	27	5.255105	101.067602	JKR
648	HT KNR-AJD 17 P12	54	5.255334	101.06756	JKR
649	KAJ 11 P9	35	5.255794	101.067447	JKR
650	XXX P12	24	5.256097	101.067428	JKR
651	KAJ 10/1 P9	28	5.256303	101.067383	JKR
652	KAJ 9/1 P9	37	5.256539	101.067325	JKR
653	KAJ 9/2 P9	32	5.256861	101.067281	JKR
654	KAJ 9/3 P9	32	5.25714	101.06725	JKR
655	KAJ 9/4 P9	49	5.257411	101.067194	JKR
656	PROPOSE P7.5	39	5.25783	101.067079	JKR
657	PROPOSE P7.5	35	5.258151	101.066953	JKR
658	PROPOSE P7.5	32	5.258423	101.06682	JKR
659	PROPOSE P7.5	36	5.258674	101.06669	JKR
660	PROPOSE P7.5	37	5.258945	101.066532	JKR
661	PROPOSE P7.5	32	5.259205	101.066332	JKR
662	PROPOSE P9	32	5.259426	101.066158	JKR
663	KAJ 1/6 P9	36	5.259629	101.065963	JKR
664	KAJ 1/7 P9	36	5.259866	101.065752	JKR
665	KAJ 1/8 P9	45	5.260108	101.065547	JKR
666	PROPOSE P7.5	40	5.260416	101.0653	JKR
667	PROPOSE P7.5	35	5.260709	101.065099	JKR
668	PROPOSE P7.5	34	5.260983	101.064956	JKR
669	PROPOSE P7.5	34	5.261244	101.064817	JKR
670	PROPOSE P7.5	35	5.261529	101.064729	JKR
671	PROPOSE P7.5	36	5.261824	101.064656	JKR
672	PROPOSE P7.5	36	5.262133	101.064602	JKR
673	PROPOSE P7.5	31	5.262449	101.064583	JKR
674	PROPOSE P7.5	43	5.262718	101.064579	JKR
675	PROPOSE P7.5	26	5.263092	101.064562	JKR
676	PROPOSE P9	21	5.26332	101.064583	JKR
677	PROPOSE P9	31	5.263497	101.064551	JKR
678	PROPOSE P7.5	32	5.263766	101.064541	JKR
679	PROPOSE P7.5	37	5.264041	101.064533	JKR
680	PROPOSE P7.5	30	5.264366	101.064521	JKR
681	PROPOSE P7.5	38	5.26463	101.064517	JKR
682	PROPOSE P7.5	32	5.264961	101.064473	JKR
683	PROPOSE P7.5	36	5.265241	101.064433	JKR
684	PROPOSE P7.5	36	5.265549	101.064394	JKR
685	PROPOSE P7.5	36	5.265858	101.064322	JKR
686	PROPOSE P7.5	36	5.266162	101.064232	JKR
687	PROPOSE P7.5	37	5.266461	101.064138	JKR
688	PROPOSE P7.5	36	5.266768	101.064039	JKR
689	PROPOSE P7.5	35	5.267065	101.063939	JKR
690	PROPOSE P7.5	41	5.267358	101.06384	JKR
691	KBB A 6/1 P9	22	5.267698	101.063709	JKR
692	PROPOSE P7.5	35	5.267876	101.063643	JKR
693	PROPOSE P7.5	17	5.268162	101.063533	JKR
694	PROPOSE P7.5	14	5.268296	101.06349	JKR
695	KBB A 4 P9	40	5.268406	101.063533	JKR
696	KBB A 3 P9	41	5.268717	101.063367	JKR

APPOINTMENT AS PANEL CONTRACTOR UNDER THE BUMIPUTERA CONTRACTORS PROGRAMME FOR WORKS UNDER SCHEDULE OF RATE ("SOR") FOR SUPPLY, INSTALLATION AND COMMISSIONING OF FTTX NETWORK INFRASTRUCTURE FOR ALLO TECHNOLOGY SDN BHD

No.	Pole & Manhole ID	Distance	Latitude	Longitude	Local Authority
697	KBB A 2 P9	45	5.269044	101.063223	JKR
698	KBB B 2/1 P9	27	5.269387	101.063029	JKR
699	KBB B 1/1 P9	19	5.269607	101.062937	JKR
700	KBB B 1/1A P9	38	5.269748	101.062865	JKR
701	PROPOSE P7.5	43	5.270017	101.062671	JKR
702	PROPOSE P7.5	17	5.270335	101.062474	JKR
703	PROPOSE P7.5	18	5.270455	101.062391	JKR
704	PROPOSE P7.5	24	5.270578	101.062307	JKR
705	PROPOSE P7.5	15	5.270753	101.062198	JKR
706	PROPOSE P7.5	23	5.270852	101.062125	JKR
707	KM 22 P9	34	5.27103	101.062033	JKR
708	KM 20 P9	42	5.271303	101.061909	JKR
709	KM 19 P9	30	5.271605	101.061695	JKR
710	XXX P9	32	5.271791	101.061509	JKR
711	KM 17 P9	34	5.272001	101.06133	JKR
712	KM 16 P9	39	5.272255	101.061183	JKR
713	PROPOSE P7.5	43	5.272546	101.060995	JKR
714	KM 14 P9	27	5.272849	101.060772	JKR
715	XXX P9	51	5.273044	101.060637	JKR
716	KM 12 P9	30	5.273472	101.060489	JKR
717	XXX P9	15	5.273675	101.060322	JKR
718	KM 1/1 P9	33	5.273788	101.060267	JKR
719	KM 10 P9	50	5.274071	101.060196	R
720	KM 9 P9	44	5.274481	101.060033	MAJLIS
721	KM 8 P9	41	5.274846	101.059906	MAJLIS
722	KM 7 P9	49	5.275139	101.059703	MAJLIS
723	KM 6 P9	47	5.275489	101.059451	MAJLIS
724	KM 5 P9	39	5.275779	101.059157	MAJLIS
725	KM 4 P9	40	5.276007	101.058898	MAJLIS
726	KM 3 P9	32	5.276248	101.058641	MAJLIS
727	KM 2 P9	26	5.276463	101.058464	MAJLIS
728	PROPOSE P7.5	7	5.276576	101.05827	MAJLIS
729	PROPOSE P7.5	24	5.276582	101.058218	MAJLIS
730	PROPOSE P7.5	26	5.276416	101.058096	MAJLIS
731	PROPOSE P7.5	37	5.27629	101.057914	JKR
732	PROPOSE P7.5	42	5.276501	101.057665	JKR
733	KM 1A/2 P9	38	5.276777	101.057423	JKR
734	KM 1A/3 P9	42	5.27704	101.057213	JKR
735	PROPOSE P7.5	36	5.277346	101.057002	JKR
736	PROPOSE P7.5	18	5.277629	101.056865	JKR
737	HV FLS2 268 MLU P12	20	5.277766	101.056794	JKR
738	HV FLS2 267 MLU P12	32	5.277931	101.056741	JKR
739	XXX P12	20	5.278195	101.056666	JKR
740	HV FLS2 265 MLU P12	18	5.278362	101.056628	JKR
741	HV FLS2 264 MLU P12	25	5.278511	101.056595	JKR
742	HV FLS2 263 MLU P12	26	5.278727	101.056558	JKR
743	HV FLS2 262 MLU P12	26	5.278951	101.056539	JKR
744	HV FLS2 261 MLU P12	25	5.279179	101.056532	JKR
745	HV FLS2 260 MLU P12	25	5.279394	101.056548	JKR
746	HV FLS2 259 MLU P12	27	5.279605	101.056573	JKR
747	HV FLS2 258 MLU P12	24	5.279834	101.056606	JKR
748	HV FLS2 257 MLU P12	29	5.280037	101.056658	JKR
749	HV FLS2 256 MLU P12	26	5.280277	101.056721	JKR
750	HV FLS2 255 MLU P12	27	5.280495	101.056782	JKR
751	PROPOSE P9	16	5.280722	101.056852	JKR
752	PRP P9 BERHADAPAN SK KENERING		5.280771	101.056724	JKR

APPOINTMENT AS PANEL CONTRACTOR UNDER THE BUMIPUTERA CONTRACTORS PROGRAMME FOR WORKS UNDER SCHEDULE OF RATE (“SOR”) FOR SUPPLY, INSTALLATION AND COMMISSIONING OF FTTX NETWORK INFRASTRUCTURE FOR ALLO TECHNOLOGY SDN BHD

No.	Pole & Manhole ID	Distance	Latitude	Longitude	Local Authority
	PROPOSE P9	25	5.280722	101.056852	
753	GRIK-MPPU LWN 95A 019 P12	22	5.280937	101.056882	JKR
754	GRIK-MPPU LWN 95A 020 P12	20	5.281121	101.05692	JKR
755	GRIK-MPPU LWN 95A 021 P12	30	5.281289	101.056967	JKR
756	PROPOSE P7.5	29	5.281544	101.057038	JKR
757	GRIK-MPPU LWN 95A 023 P12	22	5.281782	101.057116	JKR
758	GRIK-MPPU LWN 95A 024 P12	29	5.281966	101.057167	JKR
759	GRIK-MPPU LWN 95A 025 P12	30	5.282213	101.057231	JKR
760	GRIK-MPPU LWN 95A 026 P12	22	5.282458	101.057312	JKR
761	GRIK-MPPU LWN 95A 027 P12	26	5.282647	101.057341	JKR
762	GRIK-MPPU LWN 95A 028 P12	25	5.28287	101.057393	JKR
763	GRIK-MPPU LWN 95A 029 P12	26	5.283083	101.057442	JKR
764	GRIK-MPPU LWN 95A 030 P12	26	5.283299	101.057497	JKR
765	GRIK-MPPU LWN 95A 031 P12	27	5.283518	101.057547	JKR
766	GRIK-MPPU LWN 95A 032 P12	26	5.283743	101.057602	JKR
767	GRIK-MPPU LWN 95A 033 P12	28	5.283964	101.057657	JKR
768	GRIK-MPPU LWN 95A 034 P12	23	5.28419	101.057739	JKR
769	GRIK-MPPU LWN 95A 035 P12	27	5.284384	101.057781	JKR
770	GRIK-MPPU LWN 95A 036 P12	19	5.284605	101.057856	JKR
771	GRIK-MPPU LWN 95A 037 P12	21	5.28475	101.05792	JKR
772	GRIK-MPPU LWN 95A 038 P12	27	5.284912	101.057996	JKR
773	GRIK-MPPU LWN 95A 039 P12	30	5.285134	101.058064	JKR
774	GRIK-MPPU LWN 95A 040 P12	32	5.285368	101.058183	JKR
775	PROPOSE P7.5	24	5.285609	101.058332	JKR
776	GRIK-MPPU LWN 95A 042 P12	28	5.285784	101.058449	JKR
777	GRIK-MPPU LWN 95A 043 P12	25	5.285994	101.058576	JKR
778	GRIK-MPPU LWN 95A 044 P12	30	5.286182	101.058679	JKR
779	GRIK-MPPU LWN 95A 045 P12	27	5.286404	101.058818	JKR
780	GRIK-MPPU LWN 95A 046 P12	29	5.286616	101.058924	JKR
781	GRIK-MPPU LWN 95A 047 P12	28	5.286843	101.05903	JKR
782	GRIK-MPPU LWN 95A 048 P12	27	5.287071	101.059111	JKR
783	GRIK-MPPU LWN 95A 049 P12	26	5.28729	101.059202	JKR
784	GRIK-MPPU LWN 95A 050 P12	31	5.287502	101.059275	JKR
785	GRIK-MPPU LWN 95A 051 P12	34	5.287766	101.059325	JKR
786	GRIK-MPPU LWN 95A 052 P12	26	5.288051	101.059397	JKR
787	GRIK-MPPU LWN 95A 053 P12	28	5.288274	101.059397	JKR
788	PROPOSE P7.5	29	5.288513	101.059403	JKR
789	GRIK-MPPU LWN 95A 055 P12	31	5.288769	101.059414	JKR
790	GRIK-MPPU LWN 95A 056 P12	20	5.289041	101.059427	ESTATE
791	PROPOSE P9	25	5.289049	101.059252	ESTATE
792	PROPOSE P7.5	23	5.289006	101.059044	ESTATE
793	HV FLS2 216 MLU P10	28	5.289041	101.058844	ESTATE
794	HV FLS2 215 MLU P10	27	5.289037	101.0586	ESTATE
795	HV FLS2 214 MLU P10	30	5.289042	101.058366	ESTATE
796	HV FLS2 213 MLU P10	24	5.289069	101.058104	ESTATE
797	HV FLS2 212 MLU P10	28	5.289065	101.057896	ESTATE
798	HV FLS2 211 MLU P10	29	5.289085	101.057652	ESTATE
799	HV FLS2 210 MLU P10	27	5.289107	101.057398	ESTATE
800	HV FLS2 209 MLU P10	30	5.289142	101.057164	ESTATE
801	HV FLS2 208 MLU P10	27	5.289162	101.056905	ESTATE
802	HV FLS2 207 MLU P10	27	5.289176	101.056669	ESTATE
803	HV FLS2 206 MLU P10	30	5.289192	101.056435	ESTATE
804	HV FLS2 205 MLU P10	27	5.289195	101.056177	ESTATE
805	HV FLS2 204 MLU P10	28	5.289214	101.055941	ESTATE
806	HV FLS2 203 MLU P10	27	5.289234	101.0557	ESTATE

APPOINTMENT AS PANEL CONTRACTOR UNDER THE BUMIPUTERA CONTRACTORS PROGRAMME FOR WORKS UNDER SCHEDULE OF RATE (“SOR”) FOR SUPPLY, INSTALLATION AND COMMISSIONING OF FTTX NETWORK INFRASTRUCTURE FOR ALLO TECHNOLOGY SDN BHD

No.	Pole & Manhole ID	Distance	Latitude	Longitude	Local Authority
807	HV FLS2 202 MLU P10	28	5.289255	101.055463	ESTATE
808	HV FLS2 201 MLU P10	27	5.289262	101.055218	ESTATE
809	HV FLS2 200 MLU P10	27	5.289291	101.054981	ESTATE
810	HV FLS2 199 MLU P10	27	5.289316	101.054743	ESTATE
811	HV FLS2 198 MLU P10	28	5.28938	101.05452	ESTATE
812	HV FLS2 197 MLU P10	30	5.289426	101.054282	ESTATE
813	HV FLS2 196 MLU P10	28	5.289493	101.054028	ESTATE
814	HV FLS2 195 MLU P10	27	5.289541	101.053788	ESTATE
815	HV FLS2 194 MLU P10	30	5.289602	101.053557	ESTATE
816	HV FLS2 193 MLU P10	27	5.289665	101.053303	ESTATE
817	HV FLS2 192 MLU P10	28	5.289731	101.053075	ESTATE
818	PROPOSE P7.5	56	5.289798	101.052838	ESTATE
819	PROPOSE P7.5	26	5.289881	101.052348	ESTATE
820	HV FLS2 189 MLU P10	29	5.289923	101.052127	ESTATE
821	HV FLS2 188 MLU P10	28	5.28997	101.051879	ESTATE
822	HV FLS2 187 MLU P10	29	5.290004	101.051642	ESTATE
823	HV FLS2 186 MLU P10	24	5.290012	101.051388	ESTATE
824	HV FLS2 185 MLU P10	26	5.290035	101.051186	ESTATE
825	HV FLS2 184 MLU P10	30	5.29005	101.050963	ESTATE
826	HV FLS2 183 MLU P10	26	5.29005	101.050698	ESTATE
827	HV FLS2 182 MLU P10	25	5.290067	101.050477	ESTATE
828	HV FLS2 181 MLU P10	27	5.290075	101.05026	ESTATE
829	PROPOSE P7.5	25	5.290087	101.050029	ESTATE
830	HV FLS2 179 MLU P10	27	5.290101	101.049811	ESTATE
831	HV FLS2 178 MLU P10	29	5.290096	101.049573	ESTATE
832	HV FLS2 177 MLU P10	26	5.2901	101.049321	ESTATE
833	HV FLS2 176 MLU P10	25	5.290098	101.049092	ESTATE
834	HV FLS2 175 MLU P10	25	5.29011	101.048878	ESTATE
835	HV FLS2 174 MLU P10	25	5.290107	101.048663	ESTATE
836	HV FLS2 173 MLU P10	28	5.290112	101.048449	ESTATE
837	HV FLS2 172 MLU P10	26	5.290125	101.048203	ESTATE
838	HV FLS2 171 MLU P10	20	5.290143	101.047981	ESTATE
839	HV FLS2 170 MLU P10	25	5.290151	101.047811	ESTATE
840	HV FLS2 169 MLU P10	23	5.290142	101.047594	ESTATE
841	HV FLS2 168 MLU P10	26	5.290135	101.047398	ESTATE
842	HV FLS2 167 MLU P10	21	5.290158	101.047176	ESTATE
843	HV FLS2 166 MLU P10	23	5.290157	101.046998	ESTATE
844	HV FLS2 165 MLU P10	26	5.290161	101.046799	ESTATE
845	HV FLS2 164 MLU P10	24	5.290174	101.046578	ESTATE
846	HV FLS2 163 MLU P10	23	5.290175	101.046367	ESTATE
847	HV FLS2 162 MLU P10	26	5.290168	101.046166	ESTATE
848	HV FLS2 161 MLU P10	24	5.290195	101.045945	ESTATE
849	HV FLS2 160 MLU P10	27	5.290205	101.045741	ESTATE
850	HV FLS2 159 MLU P10	24	5.290205	101.045504	ESTATE
851	HV FLS2 158 MLU P10	25	5.290195	101.0453	ESTATE
852	HV FLS2 157 MLU P10	29	5.290205	101.045082	ESTATE
853	HV FLS2 156 MLU P10	27	5.290187	101.044826	ESTATE
854	HV FLS2 155 MLU P10	26	5.290192	101.04459	ESTATE
855	HV FLS2 154 MLU P10	29	5.290189	101.044368	ESTATE
856	HV FLS2 153 MLU P10	28	5.2902	101.044112	ESTATE
857	HV FLS2 152 MLU P10	29	5.290206	101.043869	ESTATE
858	HV FLS2 151 MLU P10	20	5.290232	101.043617	ESTATE
859	HV FLS2 150 MLU P10	25	5.290273	101.043447	ESTATE
860	HV FLS2 149 MLU P10	29	5.290279	101.04323	ESTATE

APPOINTMENT AS PANEL CONTRACTOR UNDER THE BUMIPUTERA CONTRACTORS PROGRAMME FOR WORKS UNDER SCHEDULE OF RATE (“SOR”) FOR SUPPLY, INSTALLATION AND COMMISSIONING OF FTTX NETWORK INFRASTRUCTURE FOR ALLO TECHNOLOGY SDN BHD

No.	Pole & Manhole ID	Distance	Latitude	Longitude	Local Authority
861	HV FLS2 148 MLU P10	29	5.290263	101.042977	ESTATE
862	HV FLS2 147 MLU P10	26	5.290275	101.042726	ESTATE
863	HV FLS2 146 MLU P10	28	5.290254	101.042501	ESTATE
864	HV FLS2 145 MLU P10	28	5.29025	101.042255	ESTATE
865	HV FLS2 144 MLU P10	31	5.290288	101.042012	ESTATE
866	HV FLS2 143 MLU P10	23	5.290347	101.041749	ESTATE
867	HV FLS2 142 MLU P10	23	5.290381	101.041557	ESTATE
868	PROPOSE P7.5	21	5.290475	101.041378	ESTATE
869	HV FLS2 140 MLU P10	26	5.29057	101.041223	ESTATE
870	HV FLS2 139 MLU P10	23	5.290716	101.041053	ESTATE
871	HV FLS2 138 MLU P10	23	5.290854	101.040909	ESTATE
872	HV FLS2 137 MLU P10	20	5.290995	101.040774	ESTATE
873	HV FLS2 136 MLU P10	36	5.291133	101.04068	ESTATE
874	XXX P9	47	5.291411	101.040532	ESTATE
875	XXX P9	45	5.291787	101.040359	ESTATE
876	XXX P9	32	5.292151	101.040206	ESTATE
877	HV FLS2 129 MLU P10	26	5.292417	101.040137	ESTATE
878	HV FLS2 128 MLU P10	27	5.292625	101.040062	ESTATE
879	HV FLS2 127 MLU P10	27	5.292848	101.039983	ESTATE
880	HV FLS2 126 MLU P10	28	5.293074	101.039918	ESTATE
881	HV FLS2 125 MLU P10	23	5.293303	101.039835	ESTATE
882	HV FLS2 124 MLU P10	23	5.293491	101.039772	ESTATE
883	HV FLS2 123 MLU P10	23	5.293675	101.039712	ESTATE
884	HV FLS2 122 MLU P10	23	5.293863	101.039646	ESTATE
885	HV FLS2 121 MLU P10	25	5.294046	101.039582	ESTATE
886	PROPOSE P7.5	33	5.294255	101.039515	ESTATE
887	HV FLS2 119 MLU P10	32	5.294533	101.039429	ESTATE
888	HV FLS2 118 MLU P10	34	5.29479	101.039328	ESTATE
889	HV FLS2 117 MLU P10	28	5.295073	101.039249	ESTATE
890	HV FLS2 116 MLU P10	27	5.295308	101.0392	ESTATE
891	HV FLS2 115 MLU P10	26	5.295542	101.039156	ESTATE
892	HV FLS2 114 MLU P10	29	5.295746	101.039067	ESTATE
893	HV FLS2 113 MLU P10	29	5.29599	101.039009	ESTATE
894	HV FLS2 112 MLU P10	29	5.296244	101.038983	ESTATE
895	HV FLS2 111 MLU P10	31	5.296485	101.038902	ESTATE
896	HV FLS2 110 MLU P10	28	5.296746	101.038835	ESTATE
897	HV FLS2 109 MLU P10	24	5.296984	101.038771	ESTATE
898	XXX	25	5.297187	101.038747	ESTATE
899	XXX P9	67	5.297377	101.038645	ESTATE
900	XXX P7	52	5.297951	101.03849	ESTATE
901	PROPOSE P7.5	33	5.298389	101.038364	ESTATE
902	FLS1 D 35 P9	12	5.298656	101.038263	ESTATE
903	HV FLS 102 MLU P12	45	5.298667	101.038365	ESTATE
904	HV FLS 2 100 MLU P12	16	5.29904	101.038239	ESTATE
905	HV FLS2 99 MLU P12	25	5.299166	101.0382	ESTATE
906	HV FLS2 98 MLU P12	22	5.299373	101.038138	ESTATE
907	HV FLS2 97 MLU P12	22	5.299551	101.03807	ESTATE
908	HV FLS2 96 MLU P12	18	5.299731	101.038027	ESTATE
909	HV FLS2 95 MLU P12	26	5.299876	101.037983	ESTATE
910	HV FLS2 94 MLU P12	25	5.300087	101.037903	ESTATE
911	HV FLS2 93 MLU P12	20	5.300288	101.037824	ESTATE
912	HV FLS2 92 MLU P12	20	5.300438	101.037737	ESTATE
913	HV FLS2 91 MLU P12	23	5.300588	101.037654	ESTATE
914	HV FLS2 90 MLU P12	20	5.300748	101.037537	ESTATE
915	HV FLS2 89 MLU P12	43	5.300884	101.037431	ESTATE
916	HV FLS2 88 MLU P12	21	5.301171	101.037184	ESTATE

APPOINTMENT AS PANEL CONTRACTOR UNDER THE BUMIPUTERA CONTRACTORS PROGRAMME FOR WORKS UNDER SCHEDULE OF RATE (“SOR”) FOR SUPPLY, INSTALLATION AND COMMISSIONING OF FTTX NETWORK INFRASTRUCTURE FOR ALLO TECHNOLOGY SDN BHD

No.	Pole & Manhole ID	Distance	Latitude	Longitude	Local Authority
917	HV FLS2 87 MLU P12	43	5.301044	101.037309	ESTATE
918	HV FLS2 86 MLU P12	21	5.301332	101.037061	ESTATE
919	HV FLS2 85 MLU P12	20	5.301471	101.036949	ESTATE
920	PROPOSE P7.5	23	5.301607	101.036841	ESTATE
921	HV FLS2 83 MLU P12	24	5.30177	101.036727	ESTATE
922	HV FLS2 82 MLU P12	24	5.30195	101.036631	ESTATE
923	HV FLS2 81 MLU P12	28	5.302124	101.036516	ESTATE
924	HV FLS2 80 MLU P12	21	5.302333	101.036388	ESTATE
925	HV FLS2 79 MLU P12	26	5.302489	101.036299	ESTATE
926	HV FLS2 78 MLU P12	23	5.302694	101.036206	ESTATE
927	HV FLS2 77 MLU P12	24	5.302884	101.036148	ESTATE
928	HV FLS2 76 MLU P12	23	5.303083	101.036079	ESTATE
929	HV FLS2 75 MLU P12	24	5.303264	101.036001	ESTATE
930	HV FLS2 74 MLU P12	22	5.303457	101.035937	ESTATE
931	HV FLS2 73 MLU P12	20	5.303639	101.035876	ESTATE
932	HV FLS2 72 MLU P12	25	5.303787	101.035785	ESTATE
933	HV FLS2 71 MLU P12	22	5.303982	101.035692	ESTATE
934	HV FLS2 70 MLU P12	23	5.304146	101.035605	ESTATE
935	HV FLS2 69 MLU P12	24	5.304316	101.035509	ESTATE
936	HV FLS2 68 MLU P12	26	5.304492	101.0354	ESTATE
937	HV FLS2 67 MLU P12	22	5.304664	101.035261	ESTATE
938	XXX	20	5.304819	101.035155	ESTATE
939	HV FLS2 65 MLU P12	20	5.304924	101.035019	ESTATE
940	XXX	21	5.305051	101.0349	ESTATE
941	XXX P10	22	5.305194	101.034796	ESTATE
942	XXX P10	13	5.305316	101.034652	ESTATE
943	PRP P9 BERHADAPAN SK FELDA LAWIN		5.305215	101.034605	ESTATE
	GRIK-MPPU LWN 95A 055 P12	31	5.288769	101.059414	
944	GRIK-MPPU LWN 95A 056 P12	28	5.289041	101.059427	JKR
945	PROPOSE P7.5	21	5.289282	101.059413	JKR
946	GRIK-MPPU LWN 95A 058 P12	23	5.289459	101.059455	JKR
947	GRIK-MPPU LWN 95A 059 P12	22	5.289661	101.059456	JKR
948	XXX P9	26	5.289849	101.059463	JKR
949	GRIK-MPPU LWN 95A 061 P12	24	5.290074	101.059475	JKR
950	GRIK-MPPU LWN 95A 062 P12	31	5.290284	101.05949	JKR
951	GRIK-MPPU LWN 95A 063 P12	27	5.290551	101.0595	JKR
952	GRIK-MPPU LWN 95A 064 P12	26	5.290781	101.059506	JKR
953	GRIK-MPPU LWN 95A 065 P12	32	5.291004	101.059481	JKR
954	GRIK-MPPU LWN 95A 066 P12	33	5.291285	101.059481	JKR
955	GRIK-MPPU LWN 95A 067 P12	28	5.291573	101.059477	JKR
956	GRIK-MPPU LWN 95A 068 P12	28	5.291808	101.059401	JKR
957	GRIK-MPPU LWN 95A 069 P12	28	5.292045	101.059357	JKR
958	GRIK-MPPU LWN 95A 070 P12	29	5.292288	101.059316	JKR
959	GRIK-MPPU LWN 95A 071 P12	29	5.292535	101.059251	JKR
960	GRIK-MPPU LWN 95A 072 P12	30	5.292783	101.059189	JKR
961	GRIK-MPPU LWN 95A 073 P12	30	5.293036	101.059115	JKR
962	GRIK-MPPU LWN 95A 074 P12	26	5.293283	101.05904	JKR
963	PL 18 P9	32	5.293498	101.058976	JKR
964	GRIK-MPPU LWN 95A 076 P12	29	5.293762	101.058883	JKR
965	GRIK-MPPU LWN 95A 077 P12	32	5.293995	101.058797	JKR
966	GRIK-MPPU LWN 95A 078 P12	29	5.294244	101.058672	JKR
967	GRIK-MPPU LWN 95A 079 P12	28	5.294468	101.058562	JKR
968	GRIK-MPPU LWN 95A 080 P12	31	5.29469	101.058461	JKR
969	GRIK-MPPU LWN 95A 081 P12	27	5.294936	101.058349	JKR
970	GRIK-MPPU LWN 95A 082 P12	30	5.295139	101.058233	JKR
971	GRIK-MPPU LWN 95A 083 P12	29	5.295371	101.058118	JKR

APPOINTMENT AS PANEL CONTRACTOR UNDER THE BUMIPUTERA CONTRACTORS PROGRAMME FOR WORKS UNDER SCHEDULE OF RATE (“SOR”) FOR SUPPLY, INSTALLATION AND COMMISSIONING OF FTTX NETWORK INFRASTRUCTURE FOR ALLO TECHNOLOGY SDN BHD

No.	Pole & Manhole ID	Distance	Latitude	Longitude	Local Authority
972	GRIK-MPPU LWN 95A 084 P12	24	5.295592	101.058	JKR
973	GRIK-MPPU LWN 95A 085 P12	31	5.295788	101.057924	JKR
974	XXX P10	28	5.296027	101.057799	JKR
975	PROPOSE P9	28	5.296116	101.057569	JKR
976	PL 7A P9	29	5.296037	101.057341	JKR
977	XXX P9 BERHADAPAN SMK KENERING GERIK		5.295922	101.057112	JKR
	XXX P10	30	5.296027	101.057799	
978	XXX P10	28	5.296266	101.057706	JKR
979	XXX P10	28	5.296483	101.057602	JKR
980	XXX P10	31	5.296703	101.057503	JKR
981	XXX P10	31	5.296948	101.057393	JKR
982	XXX P10	39	5.297184	101.05727	JKR
983	PROPOSE P7.5	28	5.29752	101.057197	ESTATE
984	PL 3/1A P9	38	5.297725	101.05732	ESTATE
985	PL 3/2	41	5.298031	101.057458	ESTATE
986	PROPOSE P7.5	27	5.29831	101.057684	ESTATE
987	XXX P9	31	5.29847	101.057854	ESTATE
988	XXX P9	32	5.298454	101.058128	ESTATE
989	PROPOSE P9	58	5.29836	101.05839	ESTATE
990	PROPOSE P9	22	5.298854	101.058540	ESTATE
991	XXX P9	27	5.298732	101.058690	ESTATE
992	PROPOSE P9	24	5.298957	101.058621	ESTATE
993	XXX P9	66	5.29916	101.058572	ESTATE
994	XXX P9	38	5.299747	101.058543	ESTATE
995	PROPOSE P9	10	5.300076	101.058530	ESTATE
996	XXX P9	50	5.300076	101.058449	ESTATE
997	XXX P9	46	5.30052	101.058462	ESTATE
998	PD 3/14 P9	55	5.300921	101.058525	ESTATE
999	XXX P9	46	5.301405	101.058572	ESTATE
1000	PD 3/16	46	5.301806	101.058514	ESTATE
1001	XXX P9	50	5.302211	101.058546	ESTATE
1002	XXX P9	48	5.302654	101.058555	ESTATE
1003	PL 3/19 P9	50	5.303077	101.058567	ESTATE
1004	PL 3/20 P9	30	5.303518	101.058606	ESTATE
1005	XXX P9	35	5.303782	101.058627	ESTATE
1006	XXX P9	29	5.304084	101.058665	ESTATE
1007	XXX P9	45	5.304332	101.05866	ESTATE
1008	PL 3/23 P9	20	5.30472	101.05859	ESTATE
1009	XXX P9	15	5.304819	101.058727	ESTATE
1010	XXX P9	68	5.304926	101.058797	ESTATE
1011	VT FP2 LAP 144 P10	24	5.305524	101.058759	ESTATE
1012	VT FP2 LAP 143 P10	28	5.305731	101.058729	ESTATE
1013	VT FP2 LAP 142 P10	50	5.305971	101.058704	ESTATE
1014	VT FP2 LAP 140 P10	25	5.306393	101.058828	ESTATE
1015	VT FP2 LAP 139 P10	32	5.306576	101.058951	ESTATE
1016	VT FP2 LAP 138 P10	31	5.306814	101.059088	ESTATE
1017	VT FP2 LAP 137 P10	30	5.307031	101.059254	ESTATE
1018	VT FP2 LAP 136 P10	28	5.30724	101.059411	ESTATE
1019	VT FP2 LAP 135 P10	33	5.307435	101.059551	ESTATE
1020	VT FP2 LAP 134 P10	33	5.30767	101.059711	ESTATE
1021	VT FP2 LAP 133 P10	27	5.307916	101.059867	ESTATE
1022	VT FP2 LAP 132 P10	32	5.308105	101.060003	ESTATE
1023	VT FP2 LAP 131 P10	30	5.30834	101.060151	ESTATE
1024	VT FP2 LAP 130 P10	30	5.308559	101.060292	ESTATE
1025	VT FP2 LAP 129 P10	30	5.308778	101.060441	ESTATE
1026	PROPOSE P7.5	32	5.309	101.06058	ESTATE

APPOINTMENT AS PANEL CONTRACTOR UNDER THE BUMIPUTERA CONTRACTORS PROGRAMME FOR WORKS UNDER SCHEDULE OF RATE (“SOR”) FOR SUPPLY, INSTALLATION AND COMMISSIONING OF FTTX NETWORK INFRASTRUCTURE FOR ALLO TECHNOLOGY SDN BHD

No.	Pole & Manhole ID	Distance	Latitude	Longitude	Local Authority
1027	VT FP2 LAP 127 P10	30	5.309229	101.060739	ESTATE
1028	VT FP2 LAP 126 P10	34	5.309453	101.060878	ESTATE
1029	VT FP2 LAP 125 P10	28	5.309703	101.061045	ESTATE
1030	VT FP2 LAP 124 P10	30	5.309901	101.061179	ESTATE
1031	VT FP2 LAP 123 P10	32	5.310119	101.06132	ESTATE
1032	VT FP2 LAP 122 P10	25	5.310365	101.061455	ESTATE
1033	VT FP2 LAP 121 P10	24	5.31054	101.061584	ESTATE
1034	VT FP2 LAP 120 P10	25	5.310679	101.061739	ESTATE
1035	VT FP2 LAP 119 P10	28	5.310795	101.061924	ESTATE
1036	VT FP2 LAP 118 P10	27	5.310914	101.062139	ESTATE
1037	VT FP2 LAP 117 P10	25	5.311022	101.062349	ESTATE
1038	VT FP2 LAP 116 P10	31	5.311123	101.062544	ESTATE
1039	VT FP2 LAP 115 P10	32	5.311242	101.062786	ESTATE
1040	VT FP2 LAP 114 P10	31	5.311374	101.063037	ESTATE
1041	VT FP2 LAP 113 P10	31	5.311505	101.063277	ESTATE
1042	PROPOSE P7.5	33	5.311628	101.06352	ESTATE
1043	VT FP2 LAP 111 P10	32	5.31176	101.063779	ESTATE
1044	VT FP2 LAP 110 P10	29	5.311893	101.064023	ESTATE
1045	VT FP2 LAP 109 P10	31	5.312009	101.06425	ESTATE
1046	VT FP2 LAP 108 P10	31	5.312135	101.064488	ESTATE
1047	VT FP2 LAP 107 P10	30	5.312258	101.064732	ESTATE
1048	VT FP2 LAP 106 P10	30	5.312376	101.064961	ESTATE
1049	VT FP2 LAP 105 P10	32	5.312506	101.06519	ESTATE
1050	VT FP2 LAP 104 P10	30	5.312637	101.065436	ESTATE
1051	VT FP2 LAP 103 P10	30	5.312757	101.065672	ESTATE
1052	VT FP2 LAP 102 P10	31	5.312867	101.065913	ESTATE
1053	VT FP2 LAP 101 P10	32	5.312997	101.066154	ESTATE
1054	VT FP2 LAP 100 P10	30	5.313124	101.066408	ESTATE
1055	VT FP2 LAP 99 P10	29	5.313244	101.06664	ESTATE
1056	VT FP2 LAP 98 P10	33	5.313362	101.066868	ESTATE
1057	PROPOSE P7.5	32	5.313499	101.067118	ESTATE
1058	VT FP2 LAP 96 P10	31	5.313637	101.067363	ESTATE
1059	VT FP2 LAP 95 P10	33	5.313761	101.067599	ESTATE
1060	VT FP2 LAP 94 P10	29	5.313897	101.067856	ESTATE
1061	VT FP2 LAP 93 P10	24	5.314012	101.068086	ESTATE
1062	VT FP2 LAP 92 P10	27	5.314085	101.068285	ESTATE
1063	VT FP2 LAP 91 P10	26	5.314141	101.068509	ESTATE
1064	VT FP2 LAP 90 P10	31	5.314148	101.068735	ESTATE
1065	VT FP2 LAP 89 P10	30	5.314119	101.069001	ESTATE
1066	VT FP2 LAP 88 P10	31	5.314082	101.069263	ESTATE
1067	VT FP2 LAP 87 P10	32	5.314045	101.06953	ESTATE
1068	VT FP2 LAP 86 P10	29	5.313973	101.069801	ESTATE
1069	VT FP2 LAP 85 P10	21	5.31392	101.070051	ESTATE
1070	VT FP2 LAP 84 P10	26	5.31386	101.070226	ESTATE
1071	VT FP2 LAP 83 P10	30	5.313721	101.070408	ESTATE
1072	VT FP2 LAP 82 P10	40	5.313536	101.070589	ESTATE
1073	FP1 7A/22 P9	22	5.313275	101.070822	ESTATE
1074	VT FP2 LAP 80 P10	26	5.313138	101.070954	ESTATE
1075	VT FP2 LAP 79 P10	34	5.312975	101.071106	ESTATE
1076	VT FP2 LAP 78 P10	26	5.312767	101.071313	ESTATE
1077	VT FP2 LAP 77 P10	24	5.312614	101.071482	ESTATE
1078	VT FP2 LAP 76 P10	28	5.312493	101.071653	ESTATE
1079	VT FP2 LAP 75 P10	27	5.312373	101.071862	ESTATE
1080	VT FP2 LAP 74 P10	30	5.312313	101.072088	ESTATE
1081	VT FP2 LAP 73 P10	31	5.312296	101.072345	ESTATE
1082	VT FP2 LAP 72 P10	29	5.312277	101.072619	ESTATE

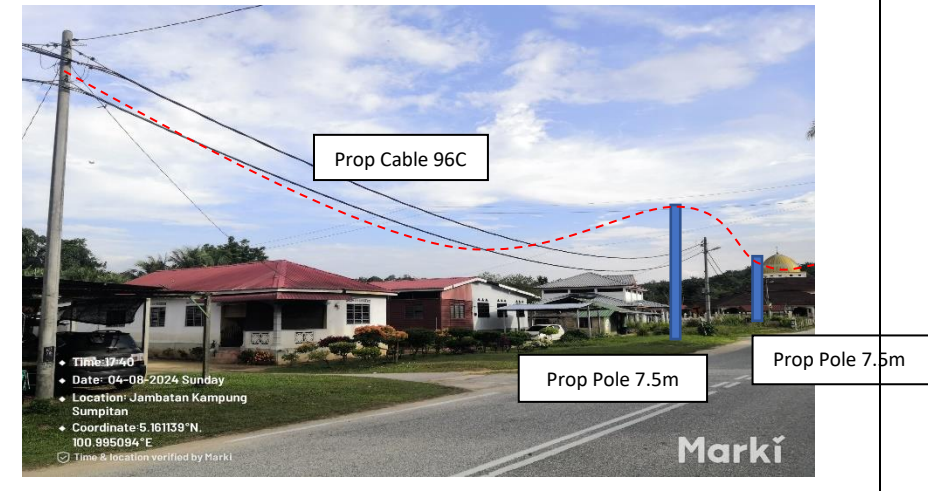
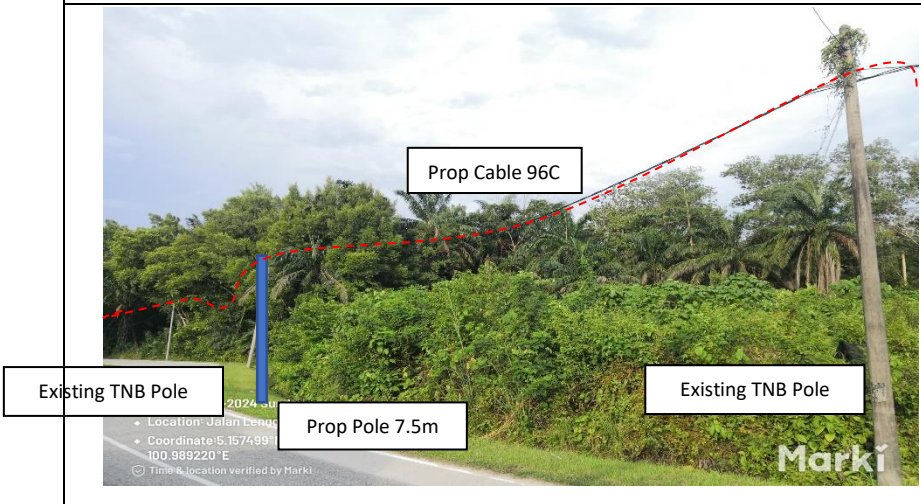
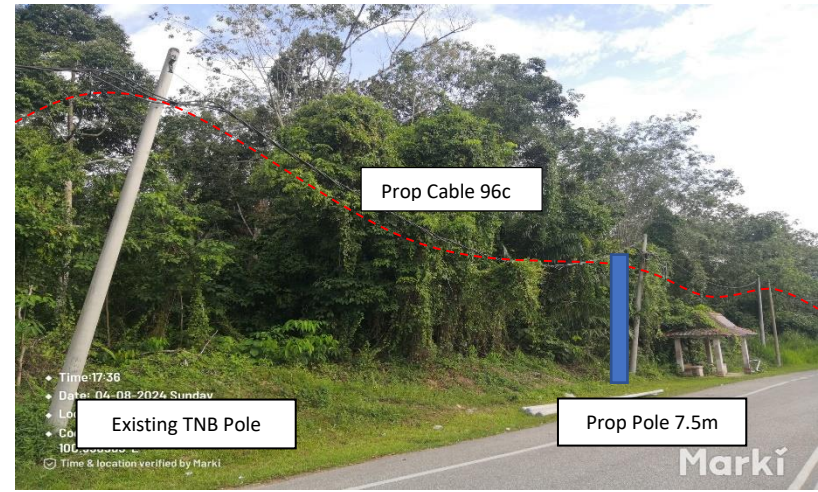
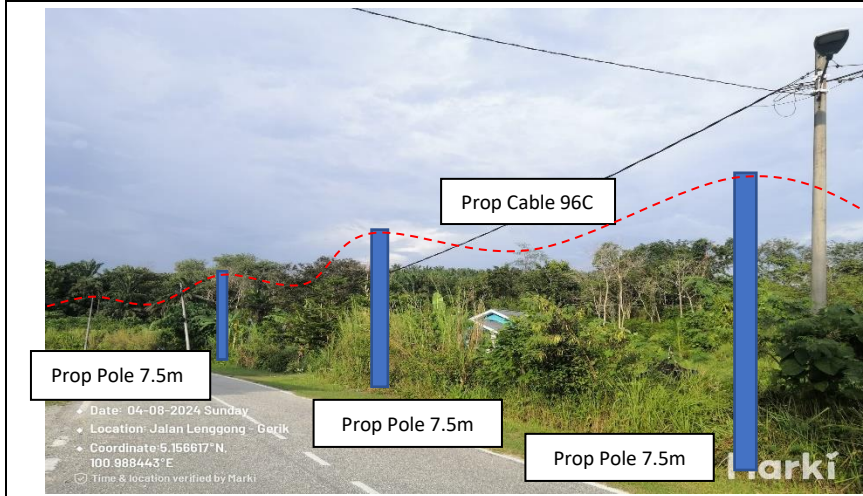
APPOINTMENT AS PANEL CONTRACTOR UNDER THE BUMIPUTERA CONTRACTORS PROGRAMME FOR WORKS UNDER SCHEDULE OF RATE (“SOR”) FOR SUPPLY, INSTALLATION AND COMMISSIONING OF FTTX NETWORK INFRASTRUCTURE FOR ALLO TECHNOLOGY SDN BHD

No.	Pole & Manhole ID	Distance	Latitude	Longitude	Local Authority
1083	VT FP2 LAP 71 P10	31	5.312253	101.072872	ESTATE
1084	VT FP2 LAP 70 P10	35	5.312219	101.073144	ESTATE
1085	VT FP2 LAP 69 P10	27	5.312208	101.07345	ESTATE
1086	VT FP2 LAP 68 P10	31	5.312171	101.07368	ESTATE
1087	VT FP2 LAP 67 P10	29	5.31213	101.073945	ESTATE
1088	VT FP2 LAP 66 P10	34	5.312084	101.074195	ESTATE
1089	VT FP2 LAP 65 P10	21	5.312072	101.074495	ESTATE
1090	PROPOSE P7.5	22	5.312081	101.074672	ESTATE
1091	VT FP2 LAP 63 P10	19	5.312004	101.074842	ESTATE
1092	VT FP2 LAP 62 P10	21	5.311872	101.074935	ESTATE
1093	VT FP2 LAP 61 P10	30	5.311723	101.075029	ESTATE
1094	VT FP2 LAP 60 P10	21	5.311512	101.075183	ESTATE
1095	VT FP2 LAP 59 P10	14	5.311381	101.075302	ESTATE
1096	VT FP2 LAP 58 P10	24	5.311305	101.07539	ESTATE
1097	VT FP2 LAP 57 P10	23	5.311142	101.075521	ESTATE
1098	VT FP2 LAP 56 P10	27	5.311022	101.075677	ESTATE
1099	VT FP2 LAP 55 P10	27	5.31089	101.075874	ESTATE
1100	VT FP2 LAP 54 P10	26	5.31078	101.076086	ESTATE
1101	VT FP2 LAP 53 P10	23	5.310708	101.076302	ESTATE
1102	VT FP2 LAP 52 P10	34	5.310656	101.076496	ESTATE
1103	VT FP2 LAP 51 P10	29	5.310605	101.076788	ESTATE
1104	VT FP2 LAP 50 P10	31	5.310558	101.077032	ESTATE
1105	VT FP2 LAP 49 P10	30	5.310528	101.0773	ESTATE
1106	VT FP2 LAP 48 P10	32	5.310501	101.07756	ESTATE
1107	VT FP2 LAP 47 P10	30	5.310458	101.077835	ESTATE
1108	VT FP2 LAP 46 P10	24	5.310422	101.078092	ESTATE
1109	VT FP2 LAP 45 P10	24	5.310393	101.0783	ESTATE
1110	VT FP2 LAP 44 P10	26	5.31033	101.078498	ESTATE
1111	VT FP2 LAP 43 P10	24	5.310235	101.078703	ESTATE
1112	VT FP2 LAP 42 P10	22	5.310139	101.078883	ESTATE
1113	VT FP2 LAP 41 P10	24	5.310052	101.079056	ESTATE
1114	PRP P9 BERHADAPAN SK FELDA PAPULUT		5.310064	101.079261	ESTATE

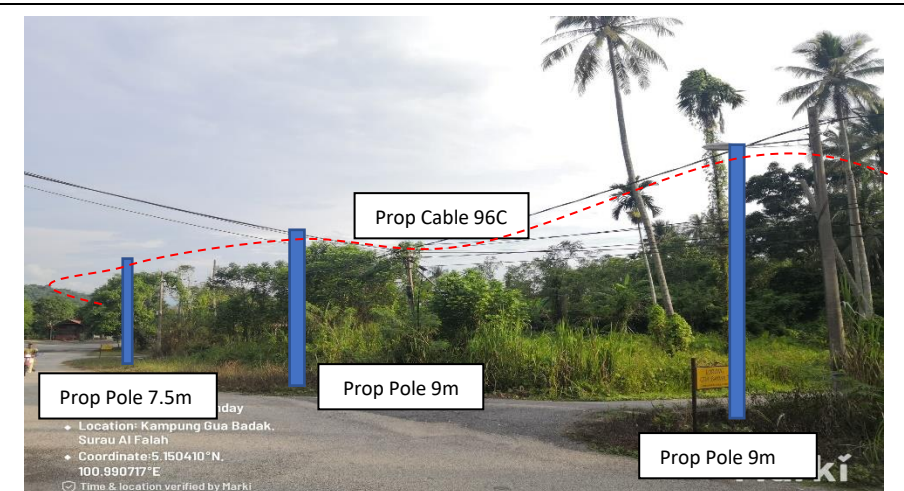
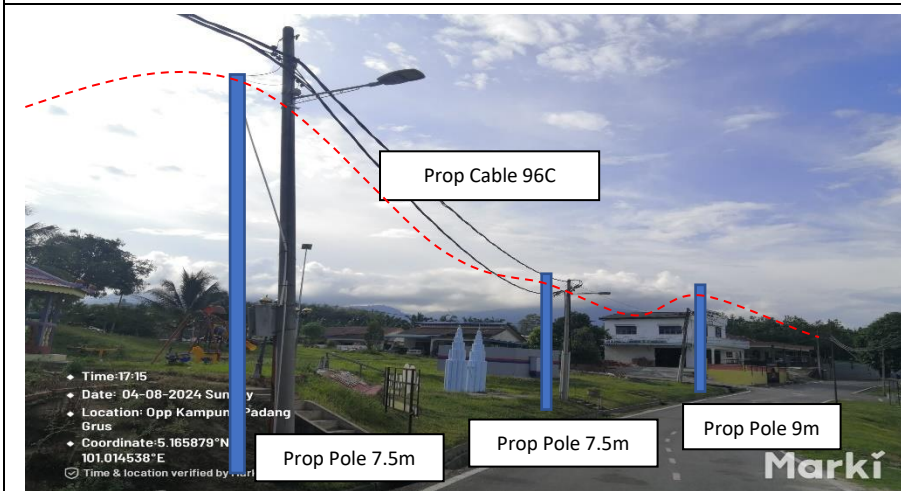
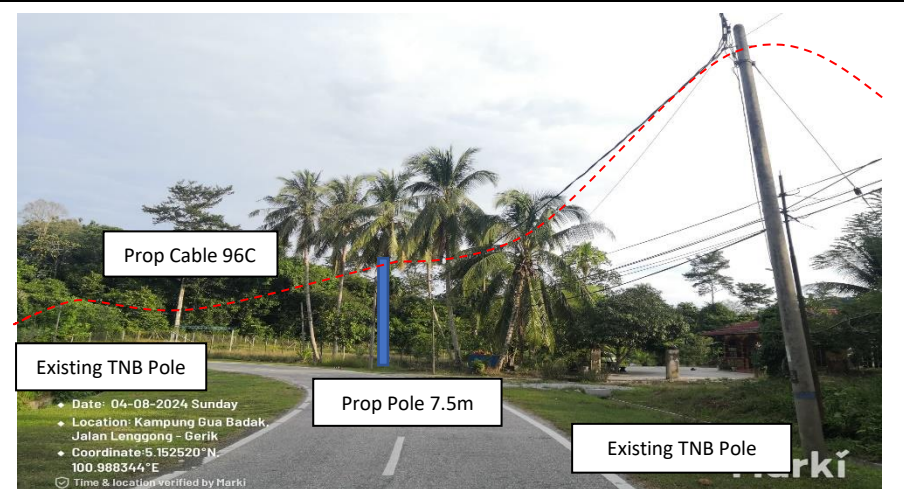
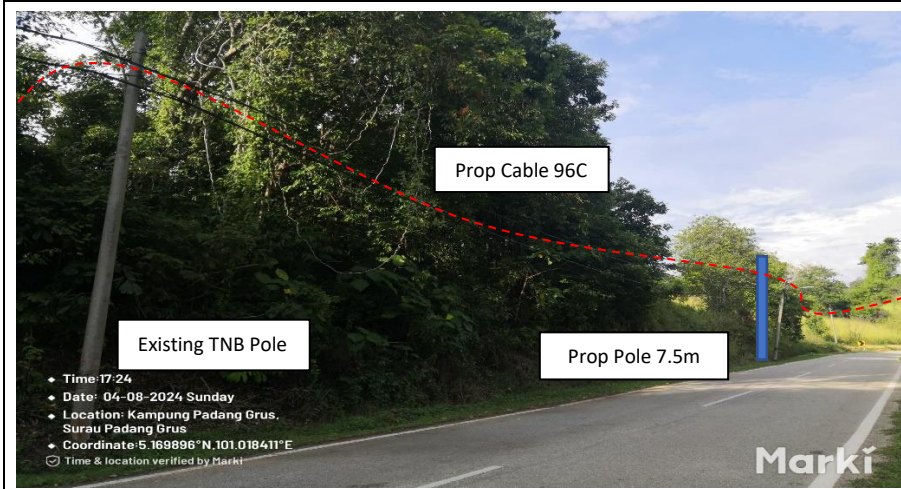
Site Photos – Open Trench (Pole 7.5m for install Riser)



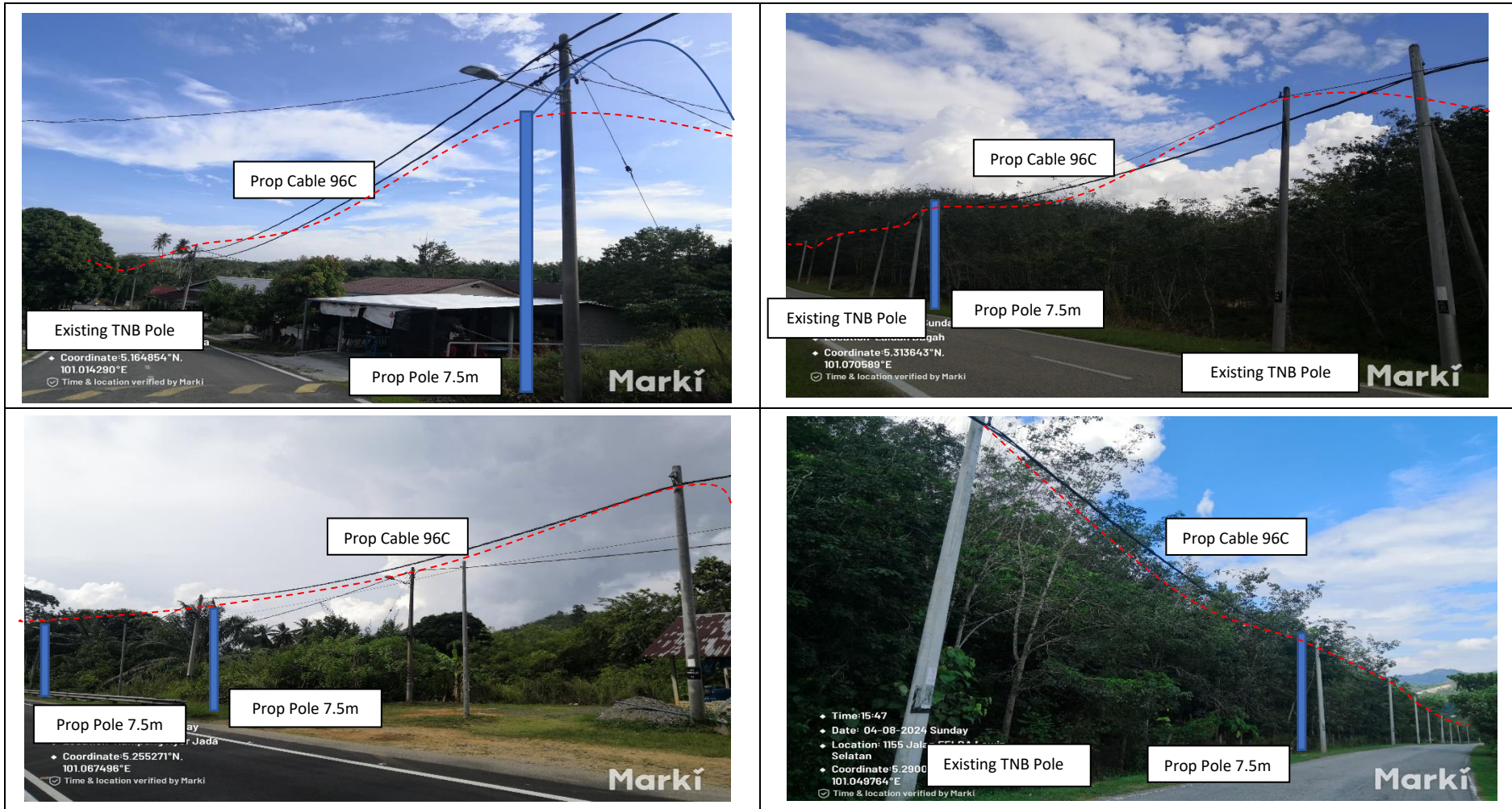
Site Photos – Propose New Pole 7.5m/9m



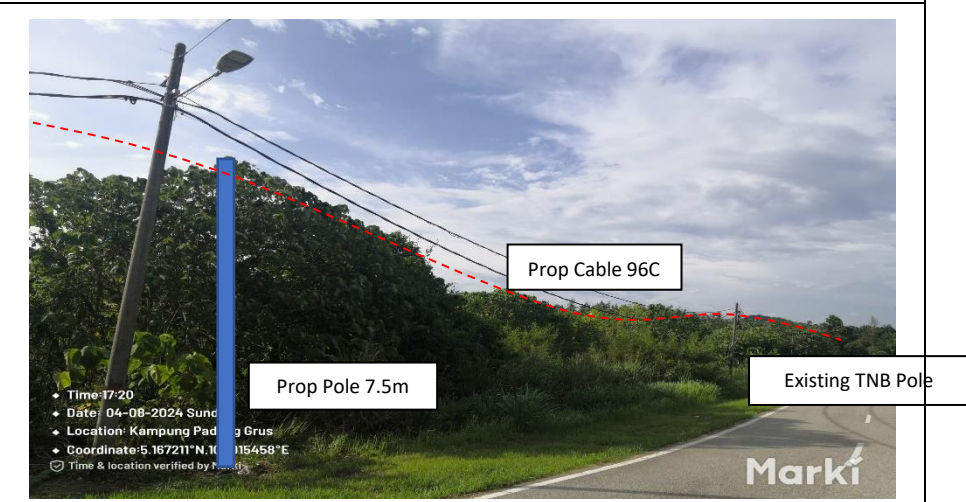
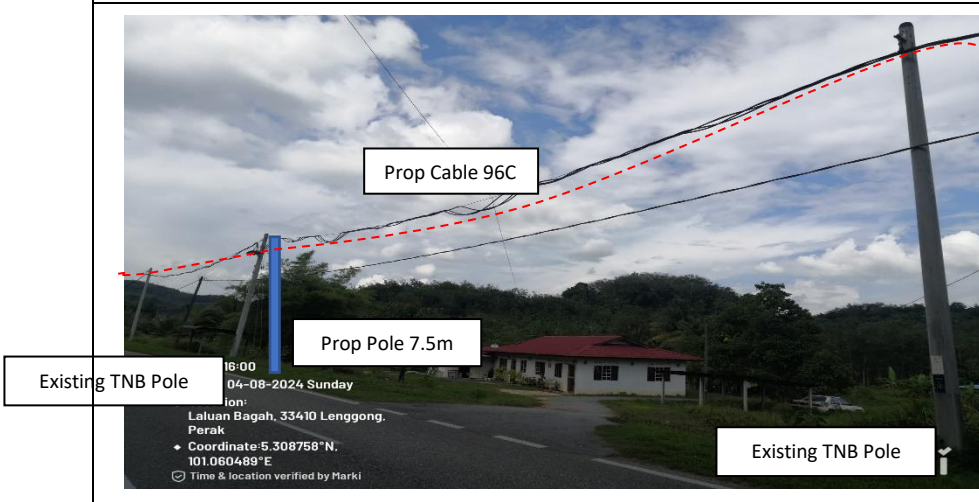
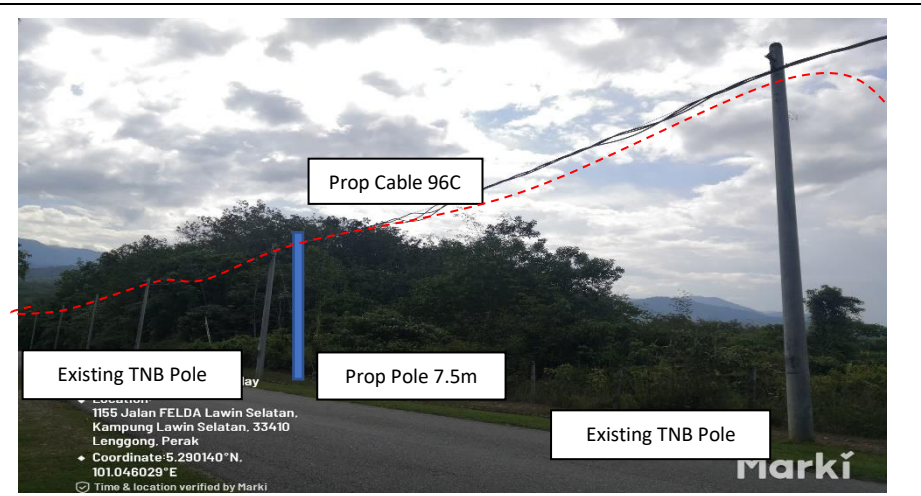
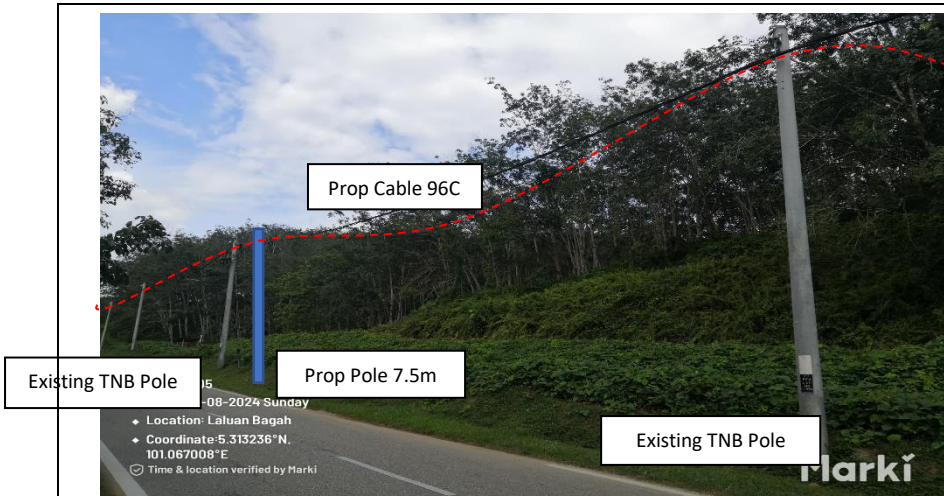
Site Photos – Propose New Pole 7.5m/9m



Site Photos – Propose New Pole 7.5m/9m



Site Photos – Propose New Pole 7.5m/9m



Site Photos – Propose New Pole 7.5m/9m

