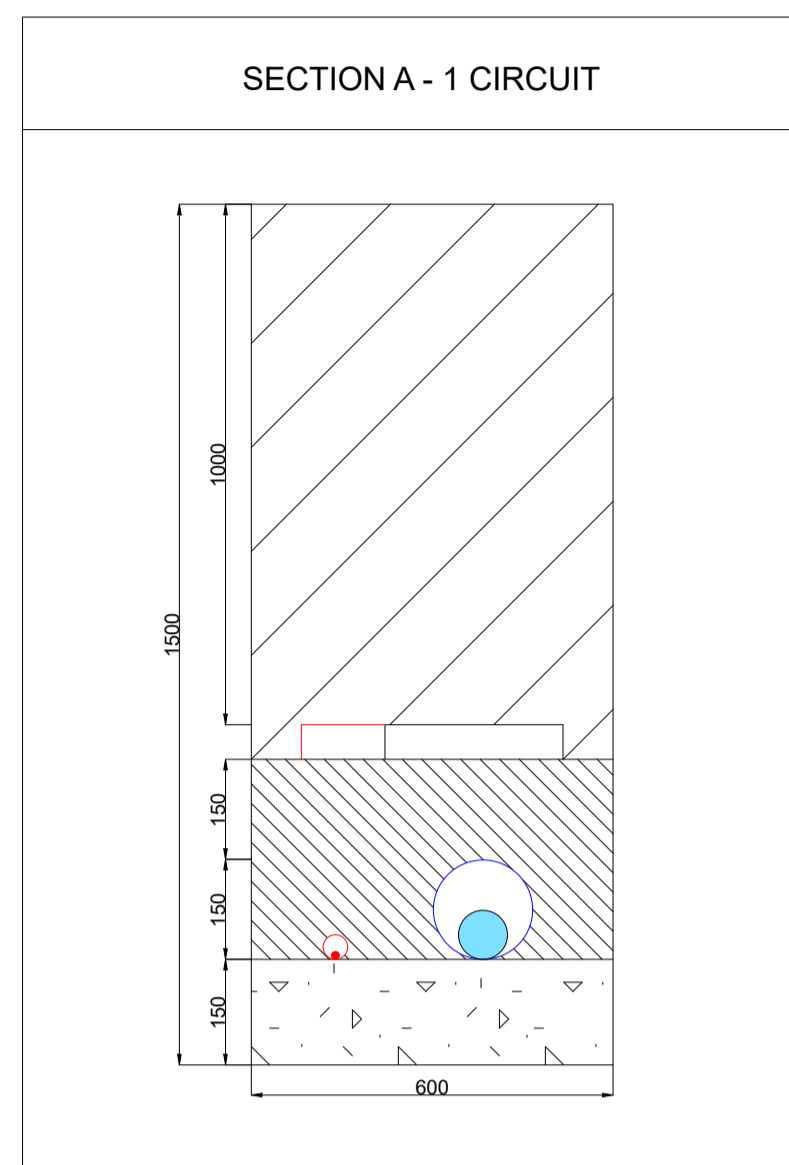
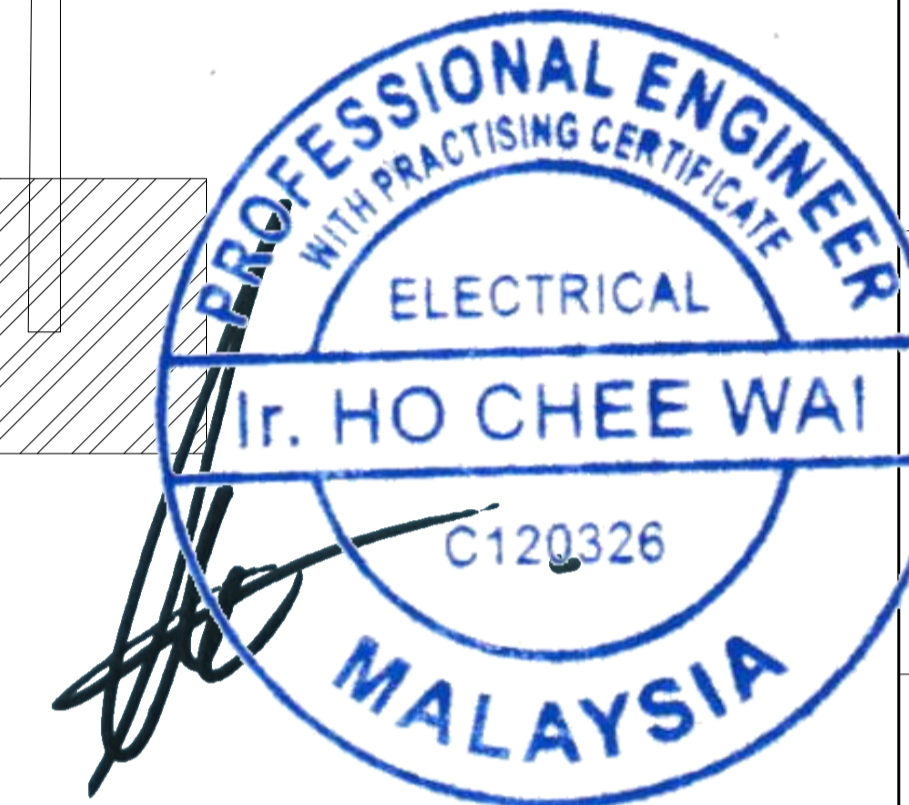
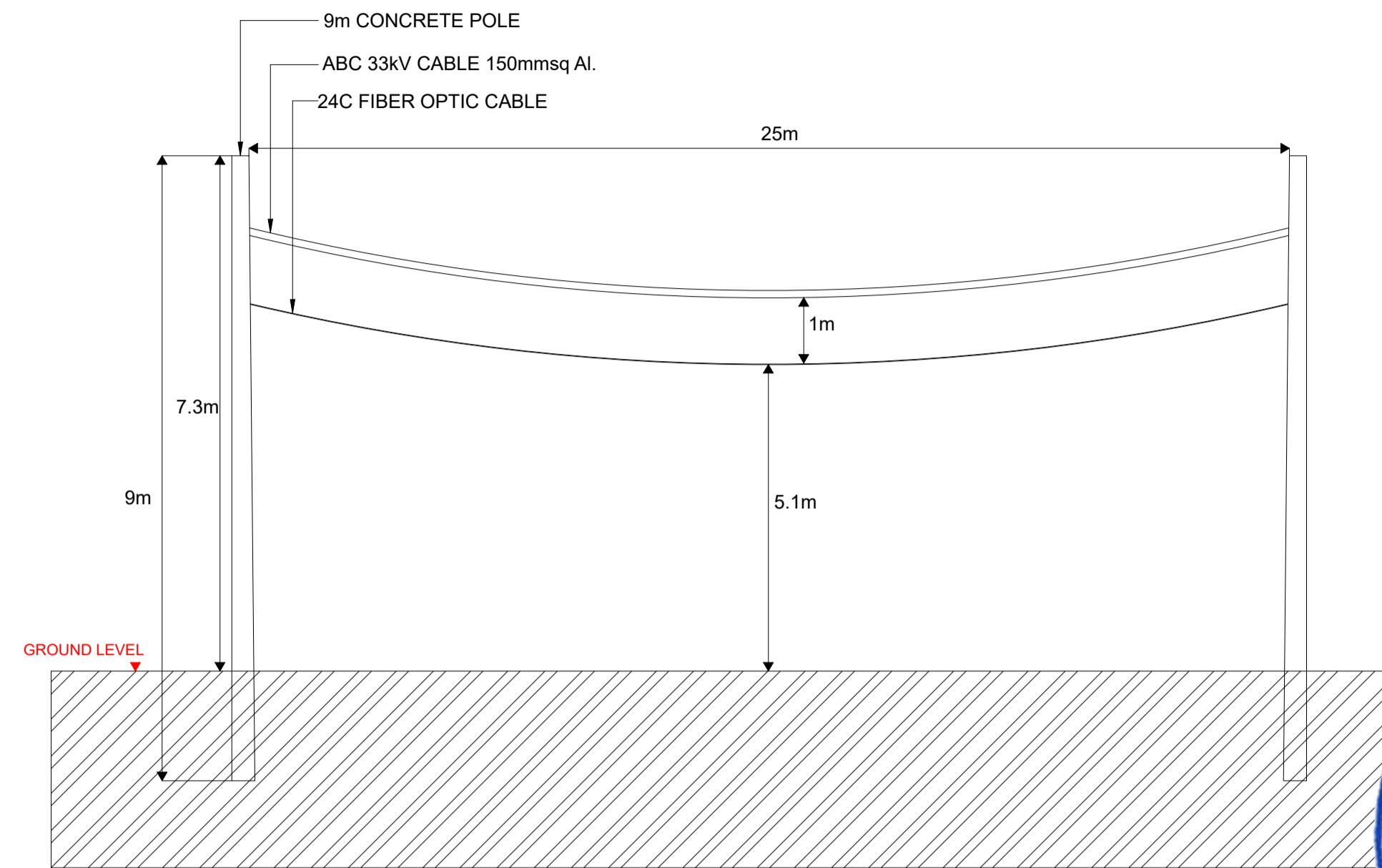


SUBMISSION DRAWING

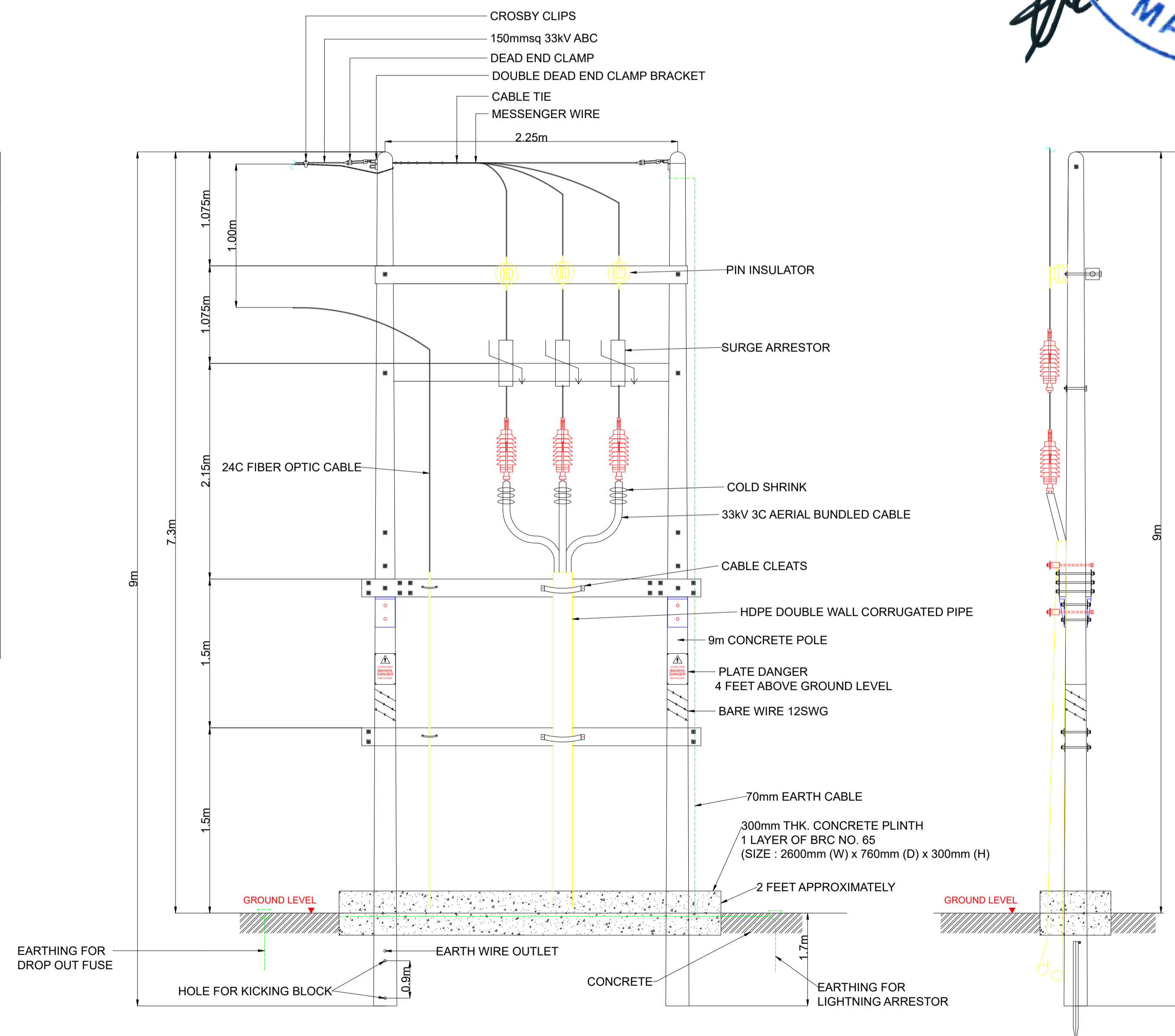
INTERCONNECTION CABLE TRENCH DETAILS



POLE-TO-POLE DETAILS



H-POLE DETAILS



LEGEND

	BACKFILLING		150mm (D) HDPE DOUBLE WALL CORRUGATED PIPE
	RIVER SAND		3C x 150mmsq ABC + 50mmsq MESSENGER CABLE
	RIVER SAND BED		50mm (D) PVC PIPE MINIMUM 2mm THICK
	1000mm (L) x 300mm (W) x 50mm (D) CONCRETE SLAB		24C FIBER OPTIC CABLE
	1000mm (L) x 300mm (W) x 50mm (D) CONCRETE SLAB		

THIS DRAWING IS COPYRIGHT PROTECTED. CONTRACTORS MUST CHECK ALL DIMENSIONS ON SITE. DIMENSIONS ARE TO BE WORKED. DISCREPANCIES MUST BE REPORTED IMMEDIATELY TO THE S.O.B BEFORE PROCEEDING. COPYING & DUPLICATING OF THESE DESIGN DRAWINGS ARE STRICTLY PROHIBITED WITHOUT WRITTEN CONSENT FROM SINARAN ALAM SDN BHD.

DEVELOPER:
SINARAN ALAM SDN BHD (1563285-H)



NO.2, LORONG IRAMA 2,
JALAN BARU,
13700 PERAI BUTTERWORTH,
PENANG, MALAYSIA

Tel: +604 384 2288
Fax: +604 384 2299

M&E CONSULTANT:

GENRE Professional Sdn Bhd
1457478-P [202201011781]

ELECTRICAL & MECHANICAL CONSULTING ENGINEERS

BLOCK B-20-2, JALAN C180/1,
DATARAN C180,
43200, CHERAS
SELANGOR, MALAYSIA.
Tel: 03-7613 5683

PROJECT:

CADANGAN PEMBANGUNAN LADANG SOLAR
(4.16 MWac) DAN KOMPONEN SOKONGAN
BERKAITAN (TEMPOH MASA 25 TAHUN)
DI ATAS LOT-LOT 1110, 1117, 1118 & 1121,
MUKIM SELAMA, KAMPUNG KUALOH,
34130 PERAK DARUL RIDZUAN

UNTUK TETUAN: SINARAN ALAM SDN BHD

Rev Date Description

Designed By : MH
Drawn By : MH
Checked By : HCW
Approved By : HCW
CAD file no :
Scale :
Date : 24 APRIL 2025
Drawing Title :

INTERCONNECTION
CABLE ROUTING
LAYOUT DETAILS

Drawing No : Rev