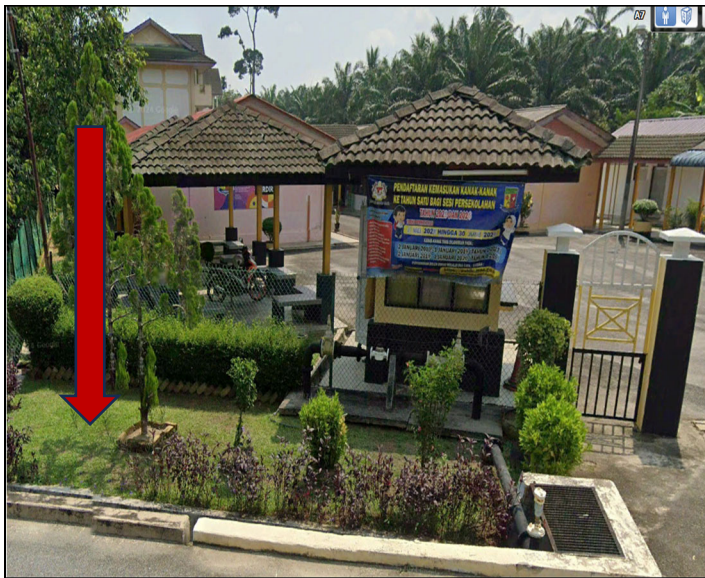


TECHNICAL PROPOSAL

POP2 ABA6031 SEKOLAH KEBANGSAAN PONDOK TANJONG (D-SIDE)

Company Name	:	SEGALA DELIMA (M) SDN BHD
Company Address	:	No. 8, Jalan Ampang Baru 6B, Pusat Perdagangan Baru, 31350 Ipoh, Perak
Prepared By	:	Mohamad Helmi
Date	:	19/12/2024



Point A



Point B

Starting Point

Site / Boundary Name	:	Sekolah Kebangsaan Pondok Tanjung
District	:	Larut Matang & Selama
Postcode	:	34010
State	:	Perak
GPS Coordinate	:	5.01816393169759, 100.732405511328
LRD	:	A

End Point

Site / Boundary Name	:	Sekolah Kebangsaan Pondok Tanjung
Address	:	Kampung Baharu Pondok Tanjung
District	:	Larut Matang & Selama
Postcode	:	34010
State	:	Perak
GPS Coordinate	:	5.02690235271928, 100.727523207898
LRD	:	B

1.0 WORK SUMMARY

NO	PROPOSED DISTANCE AND METHOD	UNIT	QUANTITY
1	Horizontal Directional Drilling (HDD)	m	0
2	Carriage Way Open Trench(CW)	m	0
3	Grass Verge Open Trenching (GV)	m	0
4	Micro Trenching (MT)	m	0
Total			0

NO	OTHER INFORMATION	UNIT	QUANTITY
1	Installation of Short Span ADSS Fiber Cables	m	2,631
2	Install New Pole	ea	83
3	Install New JRC7 Manhole	ea	0
4	Install GI Riser 100mm	ea	0
5	Install Fiber Distribution Point and Closure (Splicing, Termination and Testing)	ea	13
6	Estimated Time Required for Completion	days	90

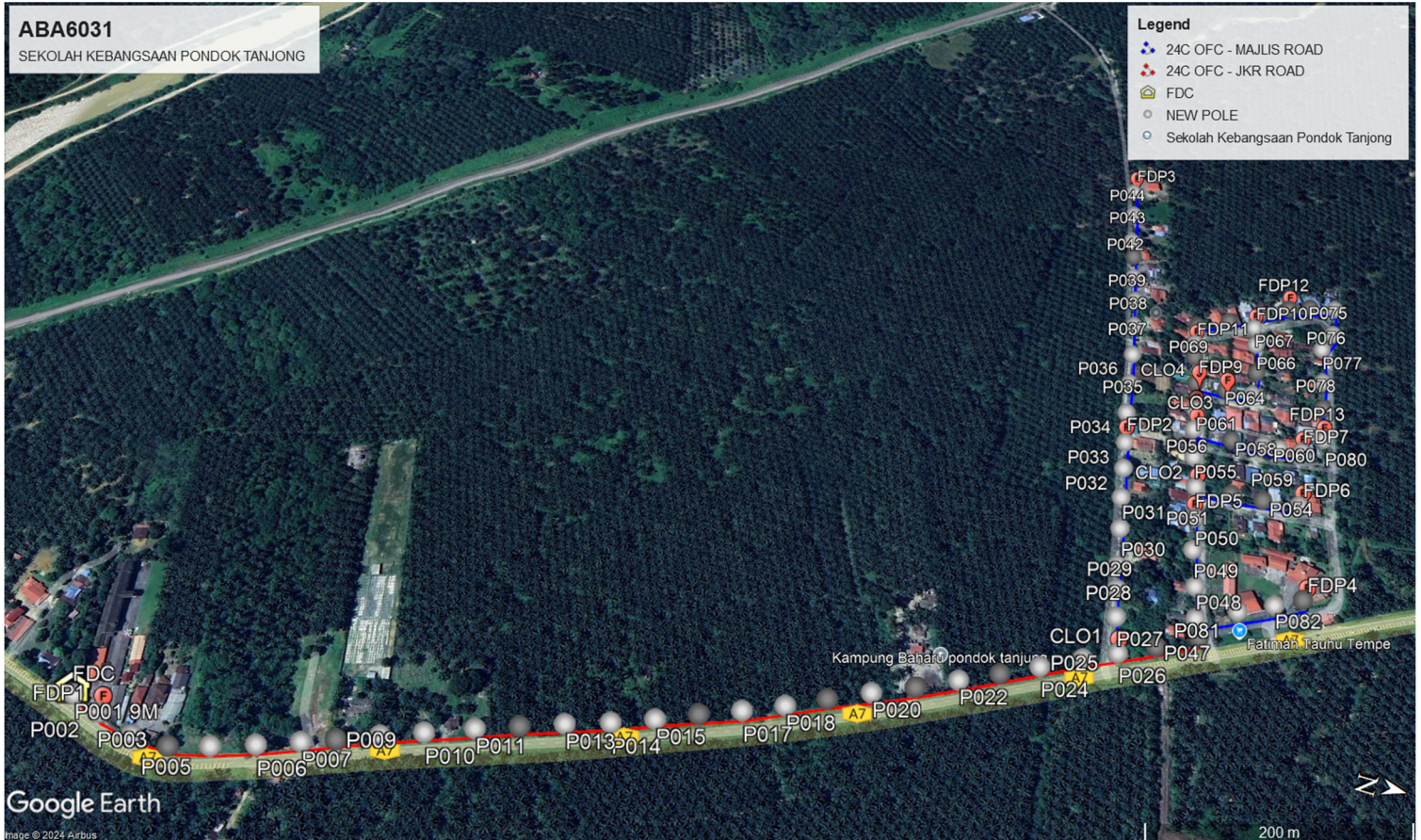
2.0 LOCAL AUTHORITY SUMMARY

Daerah Taiping

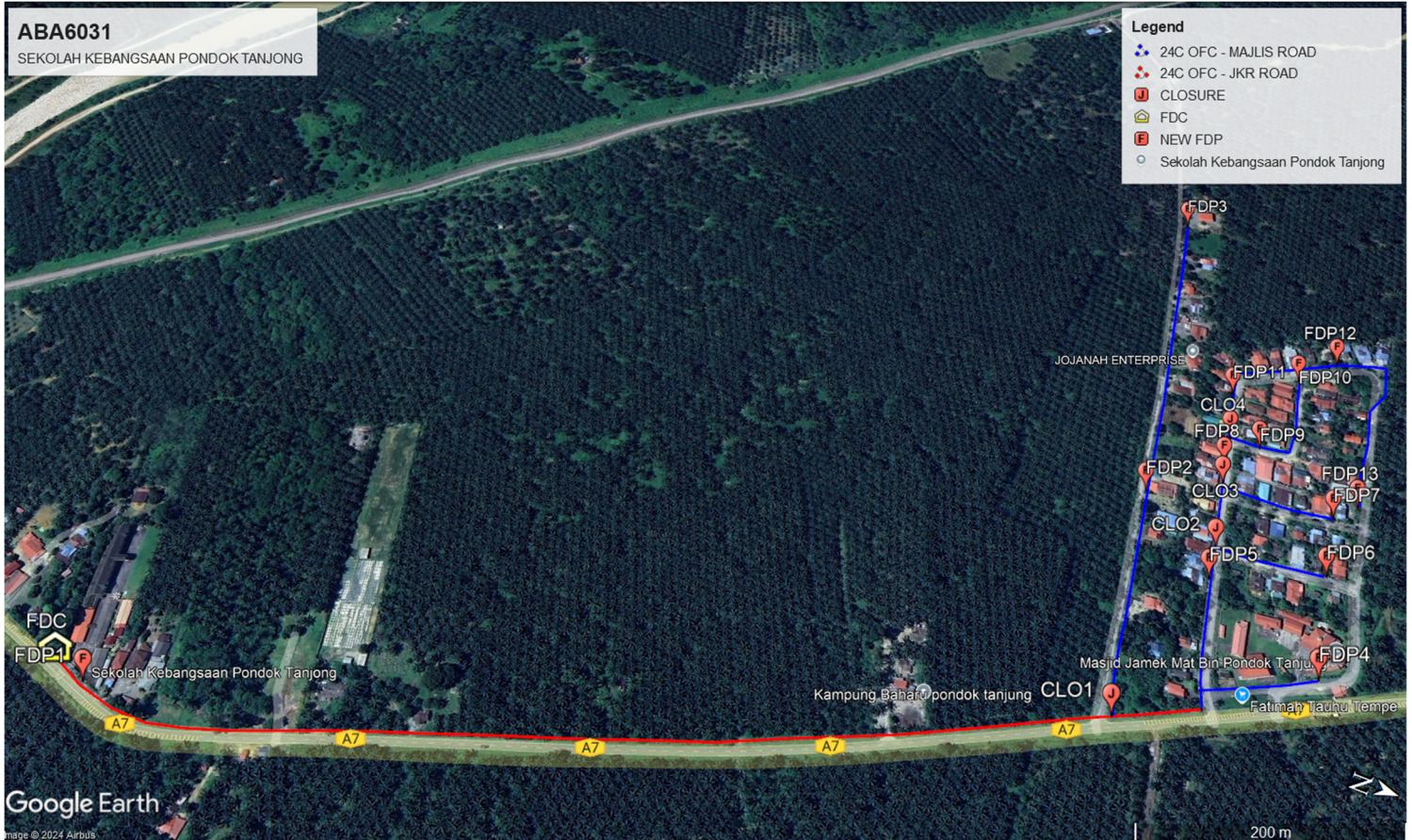
NO	ITEMS	Owner	Quantity	Distance (m)
1	HDD	JKR	-	-
		Majlis	-	-
		Estate / Private Land	-	-
2	New Pole	JKR	28	928
		Majlis	55	1,703
		Estate / Private Land	-	-
Total Distance (m)				2,631

3.0 SITE PLAN (KMZ)

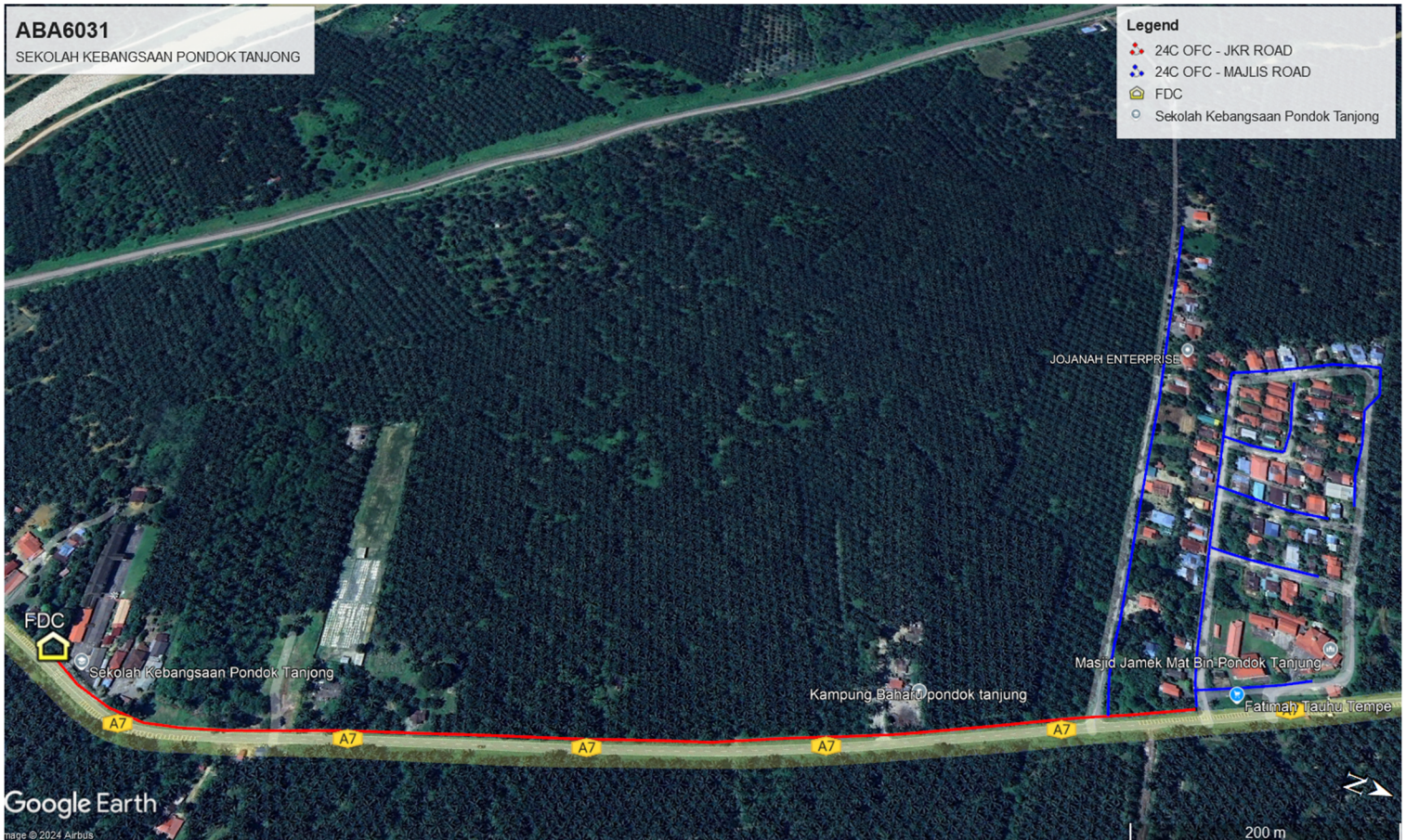
3.1 Overview Site Area (Propose New Pole)



3.2 Proposed FDP and Closure



3.3 Site Plan - KMZ Routing (All Local Authority)



Red Colour - JKR
Road Blue Colour - Majlis Road

4.0 PROPOSED NEW POLE

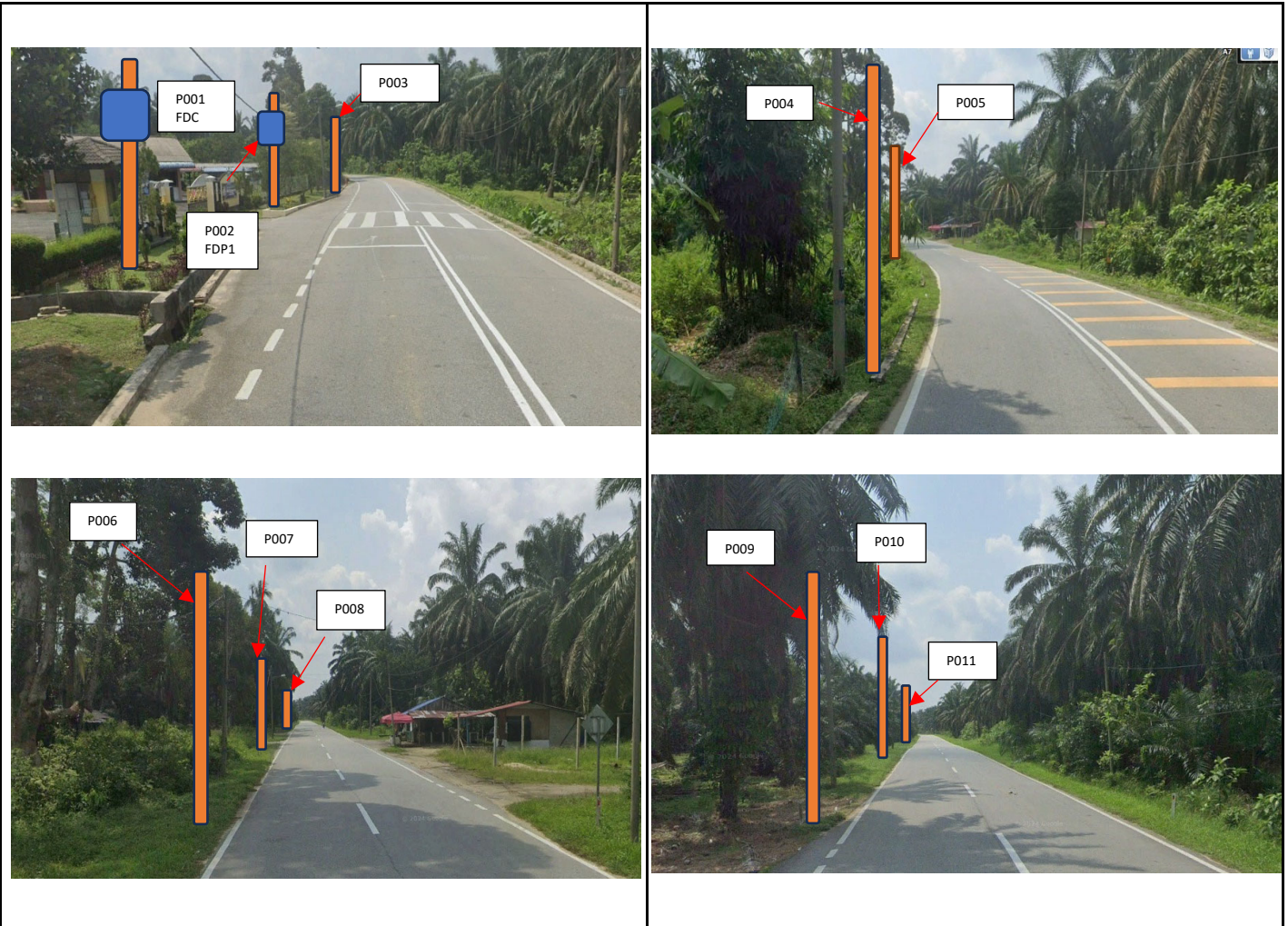
Proposed New Pole Coordinate					
No.	Pole Number	Distance (m)	Latitude	Longitude	Local Authority
1	T001	35M	5.018164	100.7324055	JKR Daerah Taiping
2	T002	35M	5.01841	100.7324813	JKR Daerah Taiping
3	T003	35M	5.018739	100.732572	JKR Daerah Taiping
4	T004	35M	5.019029	100.7325726	JKR Daerah Taiping
5	T005	35M	5.019318	100.7324955	JKR Daerah Taiping
6	T006	35M	5.019622	100.7323998	JKR Daerah Taiping
7	T007	35M	5.019918	100.7322991	JKR Daerah Taiping
8	T008	35M	5.02015	100.7322185	JKR Daerah Taiping
9	T009	35M	5.02044	100.7321123	JKR Daerah Taiping
10	T010	35M	5.020727	100.7320078	JKR Daerah Taiping
11	T011	35M	5.02106	100.7318861	JKR Daerah Taiping
12	T012	40M	5.021356	100.7317852	JKR Daerah Taiping
13	T013	35M	5.021654	100.7316804	JKR Daerah Taiping
14	T014	35M	5.02196	100.7315788	JKR Daerah Taiping
15	T015	35M	5.022258	100.7314782	JKR Daerah Taiping
16	T016	35M	5.022544	100.7313609	JKR Daerah Taiping
17	T017	35M	5.022833	100.7312495	JKR Daerah Taiping
18	T018	35M	5.023118	100.7311301	JKR Daerah Taiping
19	T019	35M	5.023395	100.7309962	JKR Daerah Taiping
20	T020	35M	5.023688	100.7308507	JKR Daerah Taiping
21	T021	35M	5.023986	100.7307169	JKR Daerah Taiping
22	T022	35M	5.024277	100.7305708	JKR Daerah Taiping
23	T023	35M	5.02456	100.7304338	JKR Daerah Taiping
24	T024	35M	5.024834	100.7302998	JKR Daerah Taiping
25	T025	35M	5.02513	100.730148	JKR Daerah Taiping
26	T026	35M	5.025376	100.7300246	JKR Daerah Taiping
27	T027	35M	5.025343	100.7297127	Majlis Daerah Taiping
28	T028	35M	5.025329	100.72947	Majlis Daerah Taiping
29	T029	35M	5.025319	100.7292555	Majlis Daerah Taiping
30	T030	35M	5.025314	100.7289041	Majlis Daerah Taiping
31	T031	35M	5.025302	100.7285953	Majlis Daerah Taiping
32	T032	35M	5.025302	100.7282852	Majlis Daerah Taiping
33	T033	35M	5.025297	100.7280042	Majlis Daerah Taiping

Proposed New Pole Coordinate					
No.	Pole Number	Distance (m)	Latitude	Longitude	Local Authority
34	T034	35M	5.025286	100.7276772	Majlis Daerah Taiping
35	T035	35M	5.025289	100.7273522	Majlis Daerah Taiping
36	T036	35M	5.025288	100.7270154	Majlis Daerah Taiping
37	T037	35M	5.025283	100.7266456	Majlis Daerah Taiping
38	T038	35M	5.02527	100.7263127	Majlis Daerah Taiping
39	T039	35M	5.025239	100.7260139	Majlis Daerah Taiping
40	T040	35M	5.02522	100.7257494	Majlis Daerah Taiping
41	T041	35M	5.025187	100.7255537	Majlis Daerah Taiping
42	T042	35M	5.025178	100.7251857	Majlis Daerah Taiping
43	T043	35M	5.025158	100.7248476	Majlis Daerah Taiping
44	T044	35M	5.025649	100.729885	Majlis Daerah Taiping
45	T045	35M	5.025953	100.7297207	JKR Daerah Taiping
46	T046	35M	5.025925	100.7295578	JKR Daerah Taiping
47	T047	35M	5.025912	100.7292698	Majlis Daerah Taiping
48	T048	35M	5.025884	100.72893	Majlis Daerah Taiping
49	T049	35M	5.025886	100.7286094	Majlis Daerah Taiping
50	T050	35M	5.025887	100.7282883	Majlis Daerah Taiping
51	T051	35M	5.026168	100.7282844	Majlis Daerah Taiping
52	T052	35M	5.026416	100.728286	Majlis Daerah Taiping
53	T053	35M	5.026695	100.7282664	Majlis Daerah Taiping
54	T054	35M	5.025864	100.72798	Majlis Daerah Taiping
55	T055	35M	5.025855	100.727678	Majlis Daerah Taiping
56	T056	35M	5.026167	100.7276986	Majlis Daerah Taiping
57	T057	35M	5.026425	100.7276902	Majlis Daerah Taiping
58	T058	35M	5.026554	100.727692	Majlis Daerah Taiping
59	T059	35M	5.026728	100.727688	Majlis Daerah Taiping
60	T060	35M	5.025857	100.727462	Majlis Daerah Taiping
61	T061	35M	5.025852	100.7271497	Majlis Daerah Taiping
62	T062	35M	5.02611	100.7271539	Majlis Daerah Taiping
63	T063	35M	5.026332	100.7271368	Majlis Daerah Taiping
64	T064	35M	5.026369	100.7268638	Majlis Daerah Taiping
65	T065	35M	5.026366	100.726509	Majlis Daerah Taiping
66	T066	35M	5.026349	100.7263011	Majlis Daerah Taiping
67	T067	35M	5.025833	100.7268376	Majlis Daerah Taiping
68	T068	35M	5.025835	100.7266612	Majlis Daerah Taiping
69	T069	35M	5.025852	100.7264279	Majlis Daerah Taiping
70	T070	35M	5.026126	100.7262896	Majlis Daerah Taiping
71	T071	35M	5.026395	100.7261408	Majlis Daerah Taiping
72	T072	35M	5.026638	100.7260337	Majlis Daerah Taiping
73	T073	35M	5.026817	100.7259876	Majlis Daerah Taiping
74	T074	35M	5.027027	100.7259586	Majlis Daerah Taiping

75	T075	35M	5.025286	100.7276772	Majlis Daerah Taiping
----	------	-----	----------	-------------	-----------------------

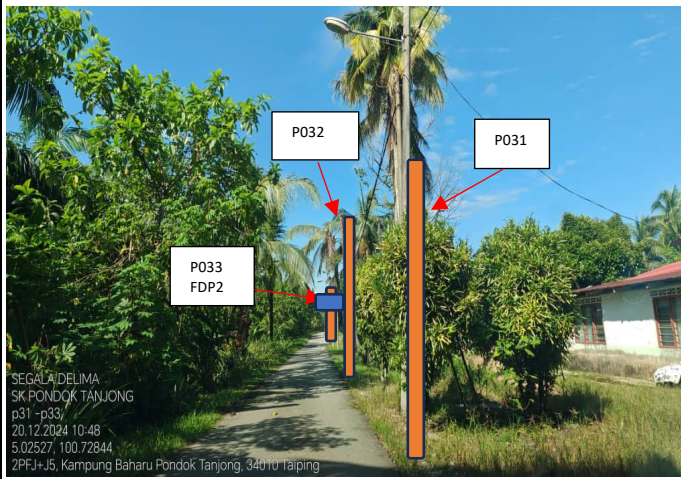
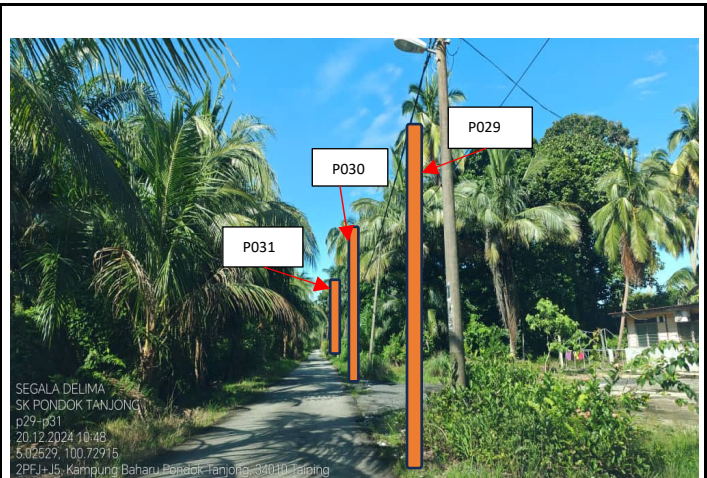
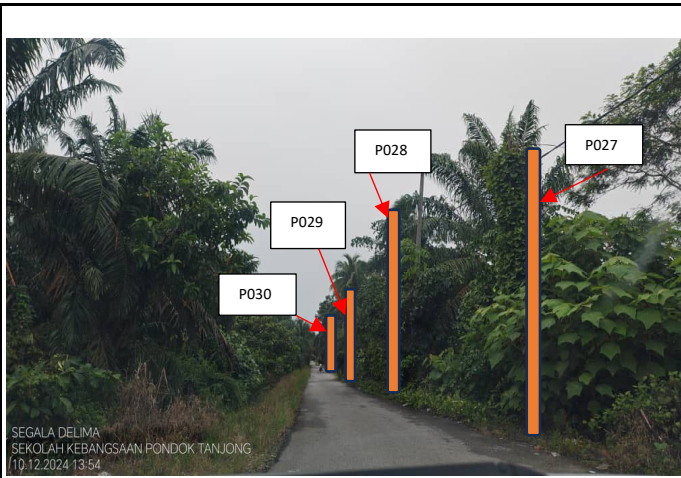
Proposed New Pole Coordinate					
No.	Pole Number	Distance (m)	Latitude	Longitude	Local Authority
76	T076	35M	5.027007	100.7262689	Majlis Daerah Taiping
77	T077	35M	5.026913	100.7264682	Majlis Daerah Taiping
78	T078	35M	5.02691	100.7268638	Majlis Daerah Taiping
79	T079	35M	5.026905	100.7271681	Majlis Daerah Taiping
80	T080	35M	5.026902	100.7275232	Majlis Daerah Taiping
81	T081	35M	5.026231	100.729407	Majlis Daerah Taiping
82	T082	30M	5.026494	100.729286	Majlis Daerah Taiping
83	T083	25M	5.026701	100.729184	Majlis Daerah Taiping

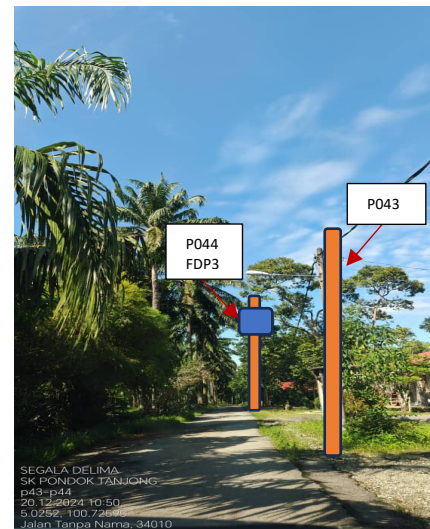
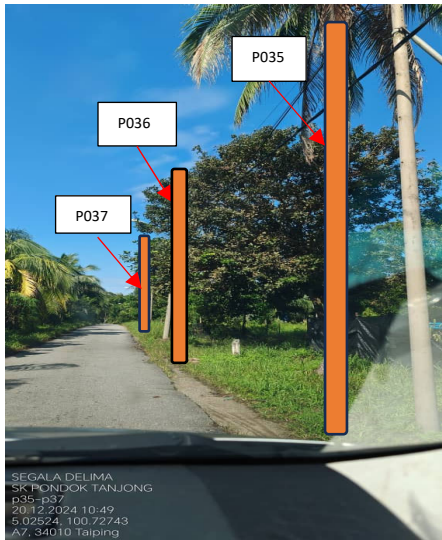
5.0 SITE PHOTOS - PROPOSED NEW POLE

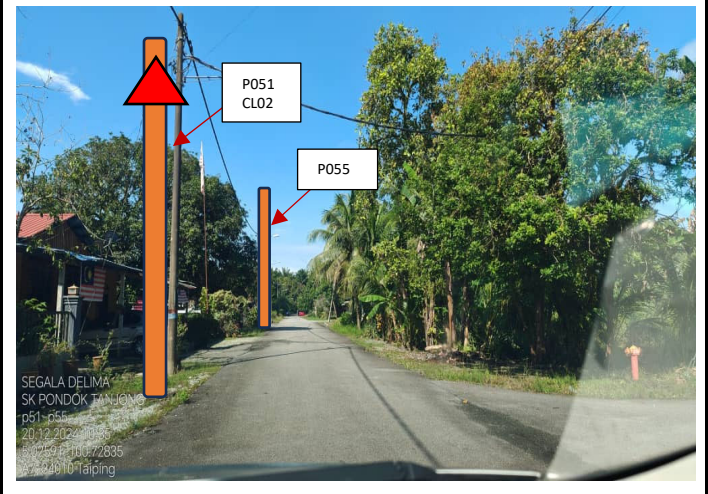
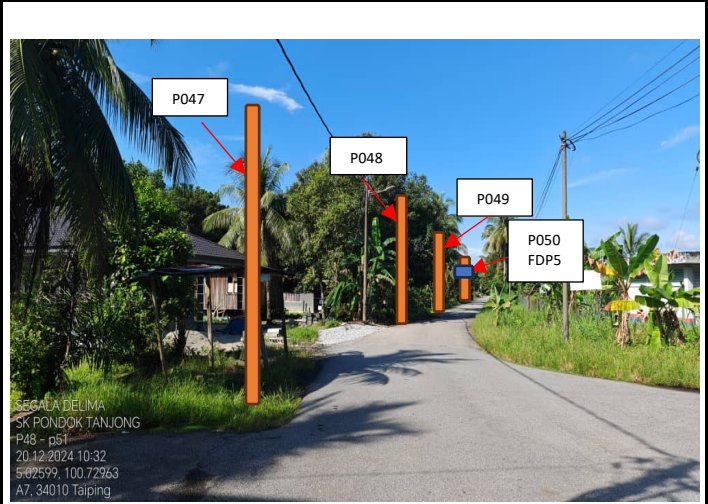
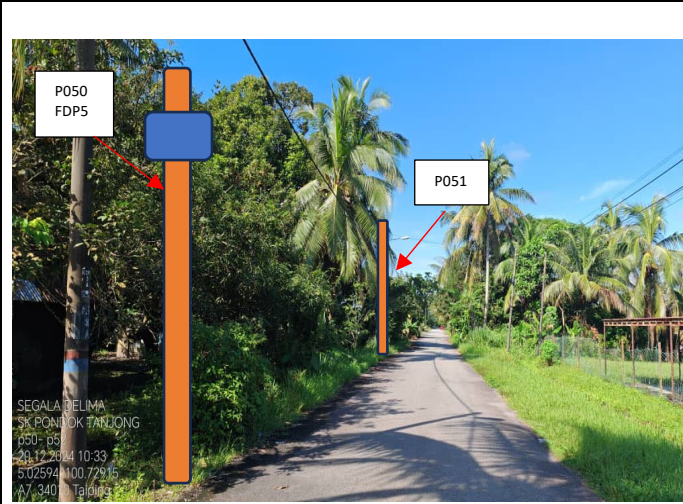


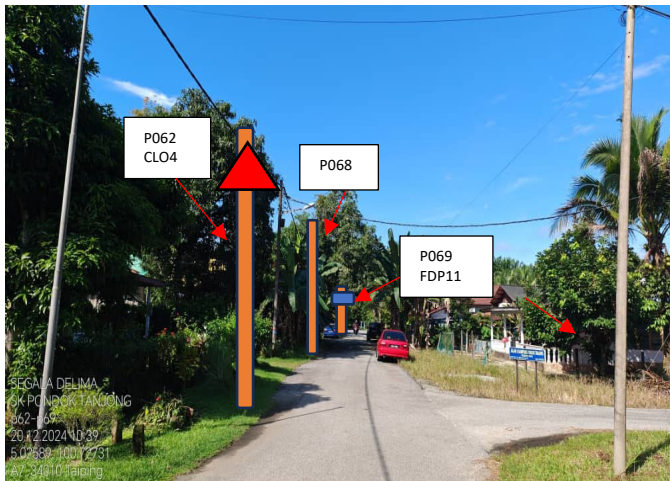
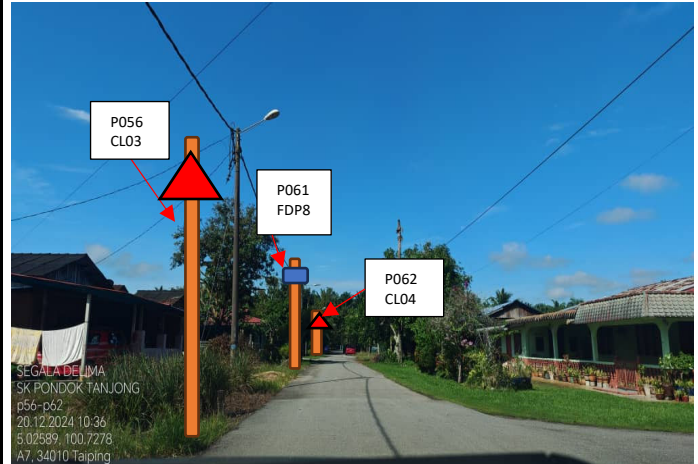
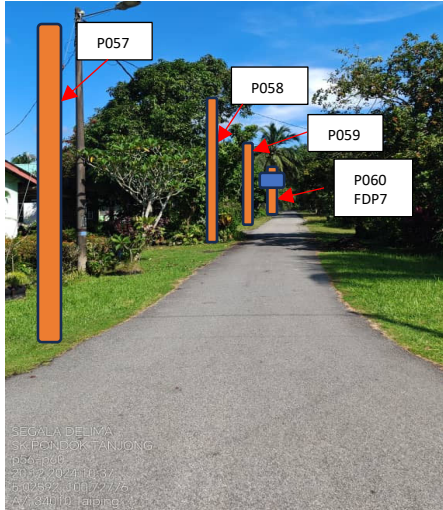


P033
FDP2

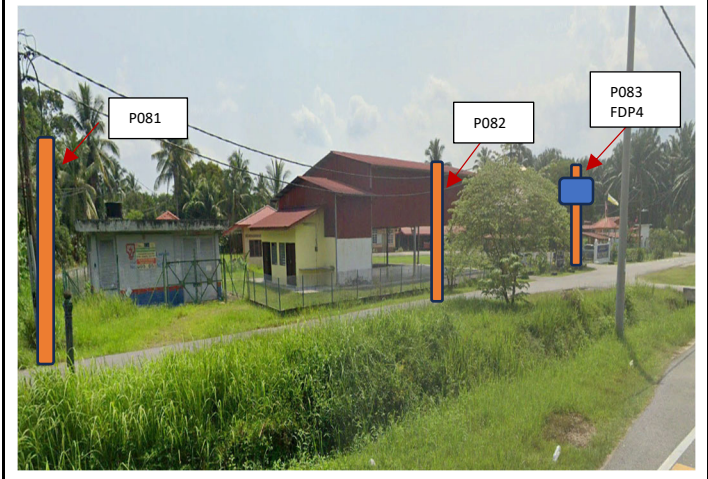
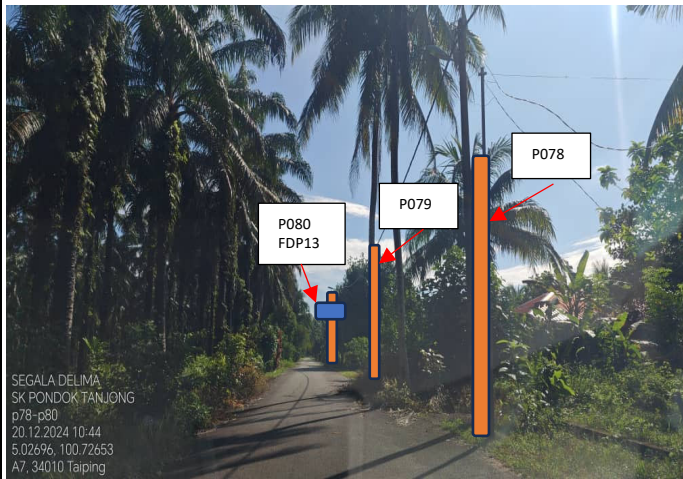






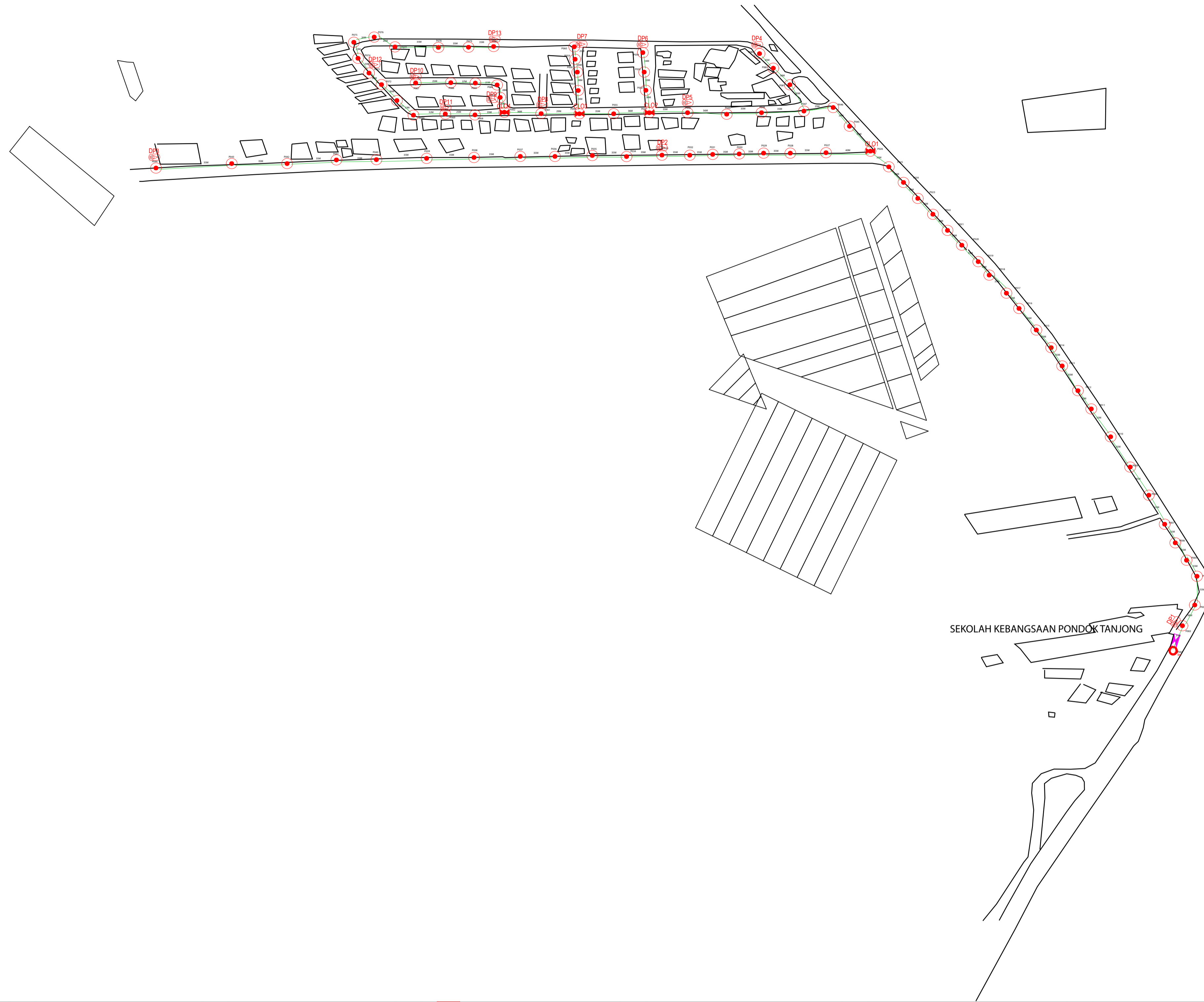






6.0 3rd PARTIES DEPENDENCIES

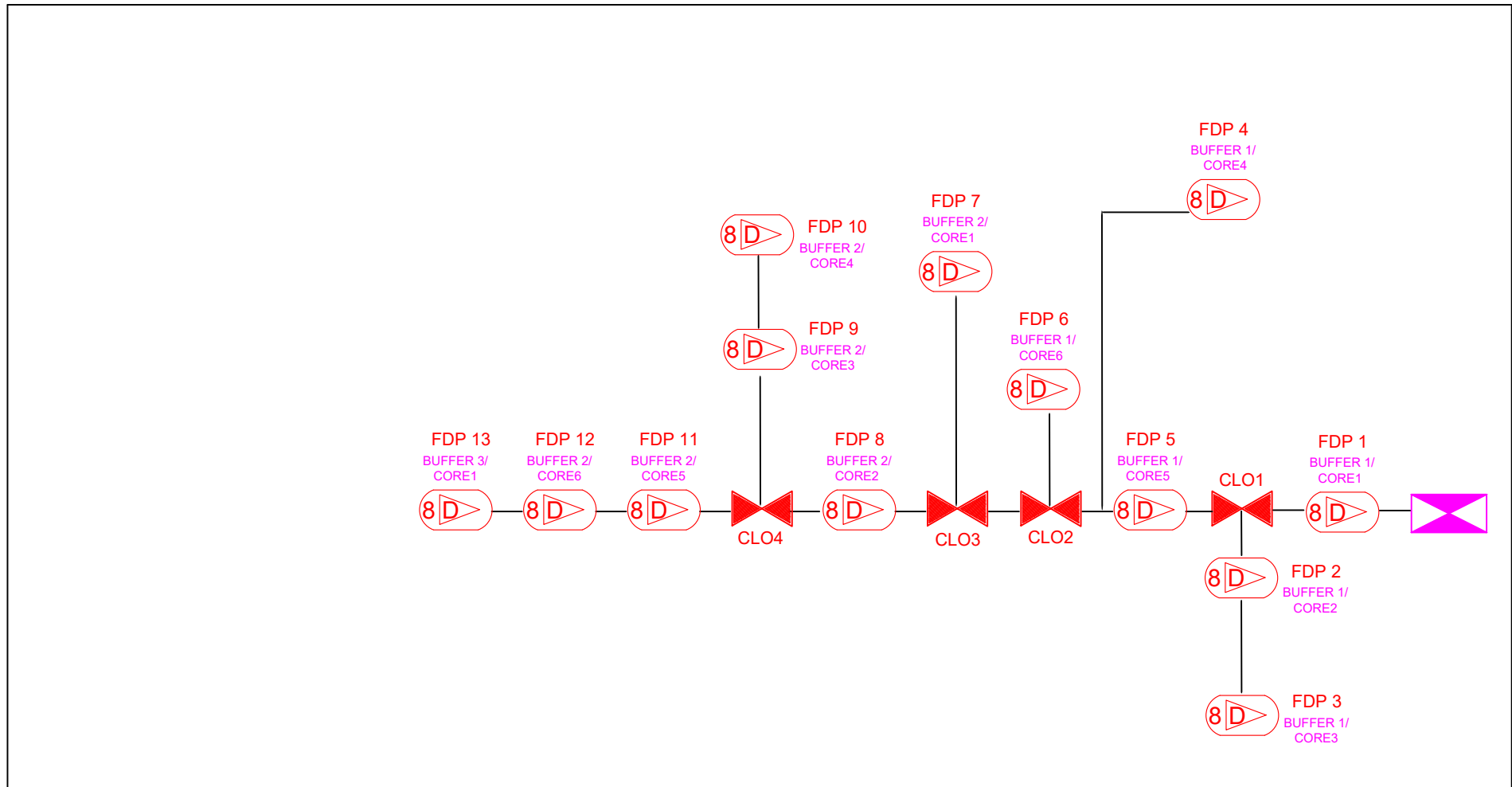
NO	LOCAL COUNCIL / AUTHORITY	REMARK
1	Majlis Daerah Taiping	1,703m
2	JKR Daerah Taiping	928m



12C FOC	Installed 1:4 / 1:8 / 1:32 splitter	Installed Pole (9m)	1	S	Suspension	B30	New Manhole (PIT)	Micro-Trenching (Meter)	MH1	MH NO.	
24C FOC	Installed Patch Cord	Installed Pole (7.5M)	82	T	Tension	C7	New Manhole(JRC7)	Temporary Infra (Meter)	TKS-1	Existing TNB Pole NO.	
48C FOC	FDC	Installed Pole (6.7M)	1	R	Pole Ring		FDP Boundary	Loop / Coil (Meter)	P001	New Pole NO.	
96C FOC	Closure	Existing TNB Pole	4	S	FDP with (1:8) splitter	13	HDD (Meter)	#	CL01	Closure NO.	
144C FOC	Existing Closure	Installed Riser		M	Existing Manhole		Open Cut (Meter)	C01	DP1	FDP NO.	

ACTUAL HOMEPASS :

KEY PLAN:	PROJECT OWNER:  KEMENTERIAN KOMUNIKASI DAN DIGITAL	MAIN CONTRACTOR:  PRIVASAT	SUB-CONTRACTOR:  SEGALA DELIMA (M) SDN BHD NO.5, JALAN AMPANG BARU SB PUSAT PERDAGANGAN AMPANG BARU 31350 IPOH PERAK. E-MAIL : SEGALA.DELIMA@GMAIL.COM	PROJECT TITLE: CONTRACT FOR SURVEY TECHNICAL PROPOSAL AND WAYLEAVE & PERMITTING APPROVAL POP 2 PROJECT	DRAWING TITLE: ABA6031 SEKOLAH KEBANGSAAN PONDOK TANJONG	Design By : Date : 28 NOV 2024
					PROJECT PHASE: POP 2	Drawn By : Scale : 1 : 5000
						Checked By : Job Number :
						DRAWING NUMBER : Sheet : 1 / 1
						Size : A1



12C FOC	Installed 1:4 / 1:8 / 1:32 splitter	Installed Pole (9m)	Suspension	New Manhole (PIT)	Micro-Trenching (Meter)	MH1	MH NO.
24C FOC	Installed Patch Cord	Installed Pole (7.5M)	Tension	New Manhole (RC7)	Temporary Infra (Meter)	TNS-1	Existing TNB Pole NO.
48C FOC	FDC	Installed Pole (6.7M)	Pole Ring	FDP Boundary	Loop / Coil (Meter)	PX01	New Pole NO.
96C FOC	Closure	Existing TNB Pole	FDP with (1:8) splitter	HDD (Meter)	Active Outdoor Cabinet	CLO1	Closure NO.
144C FOC	Existing Closure	Installed Riser	Existing Manhole	Open Cut (Meter)	FDC NO.	DPT	FDP NO.

KEY PLAN:	PROJECT OWNER: 	MAIN CONTRACTOR: 	SUB-CONTRACTOR: 	PROJECT TITLE: ABA6031 SEKOLAH KEBANGSAAN PONDOK TANJONG	DRAWING TITLE: CORE ASSIGNMENT DRAWING	Design By : NASROHAZAN	Date : 9 NOV 2024
					PROJECT PHASE: POP 2	Drawn By : NASROHAZAN	Scale : 1 : 5000
						Checked By : (ALLO PIC)	Job Number :
						DRAWING NUMBER :	Sheet : 1 / 1
						THIS PRINT AND ITS COPYRIGHT ARE THE PROPERTY OF ALLO TECHNOLOGY SDN BHD	
							Size : A1

ACTUAL HOMEPASS :