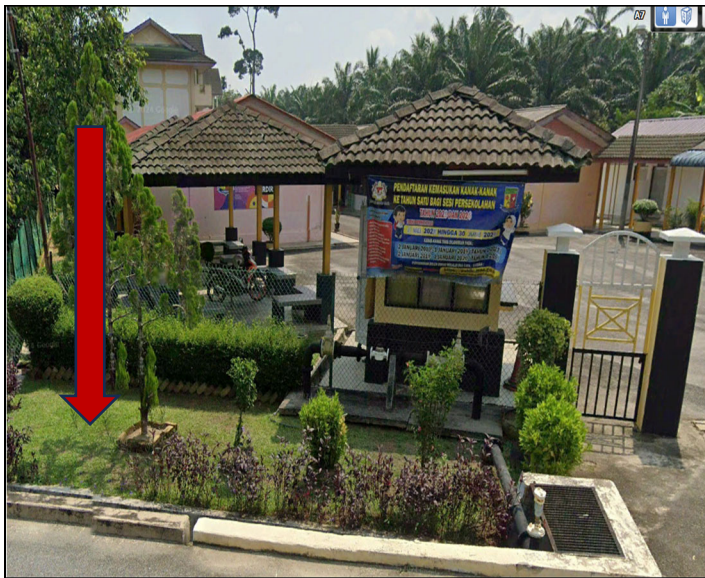


TECHNICAL PROPOSAL

POP2 ABA6031 SEKOLAH KEBANGSAAN PONDOK TANJONG (D-SIDE)

Company Name	: SEGALA DELIMA (M) SDN BHD
Company Address	: No. 8, Jalan Ampang Baru 6B, Pusat Perdagangan Baru, 31350 Ipoh, Perak
Prepared By	: Mohamad Helmi
Date	: 19/12/2024



Point A



Point B

Starting Point

Site / Boundary Name	: Sekolah Kebangsaan Pondok Tanjung
District	: Larut Matang & Selama
Postcode	: 34010
State	: Perak
GPS Coordinate	: 5.01816393169759, 100.732405511328
LRD	: A

End Point

Site / Boundary Name	: Sekolah Kebangsaan Pondok Tanjung
Address	: Kampung Baharu Pondok Tanjung
District	: Larut Matang & Selama
Postcode	: 34010
State	: Perak
GPS Coordinate	: 5.02690235271928, 100.727523207898
LRD	: B

1.0 WORK SUMMARY

NO	PROPOSED DISTANCE AND METHOD	UNIT	QUANTITY
1	Horizontal Directional Drilling (HDD)	m	0
2	Carriage Way Open Trench(CW)	m	0
3	Grass Verge Open Trenching (GV)	m	0
4	Micro Trenching (MT)	m	0
Total			0

NO	OTHER INFORMATION	UNIT	QUANTITY
1	Installation of Short Span ADSS Fiber Cables	m	2,631
2	Install New Pole	ea	82
3	Install New JRC7 Manhole	ea	0
4	Install GI Riser 100mm	ea	0
5	Install Fiber Distribution Point and Closure (Splicing, Termination and Testing)	ea	13
6	Estimated Time Required for Completion	days	90

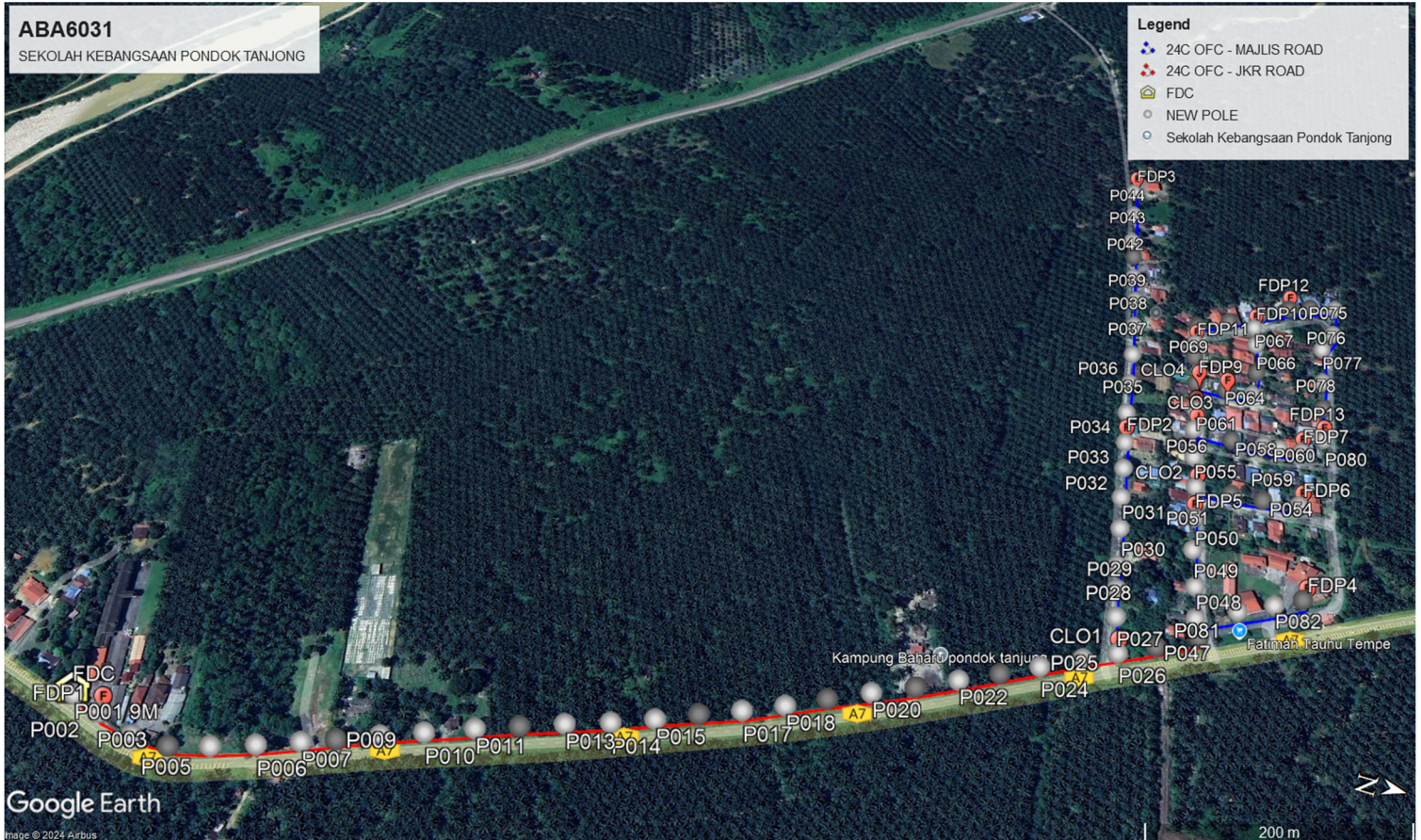
2.0 LOCAL AUTHORITY SUMMARY

Daerah Taiping

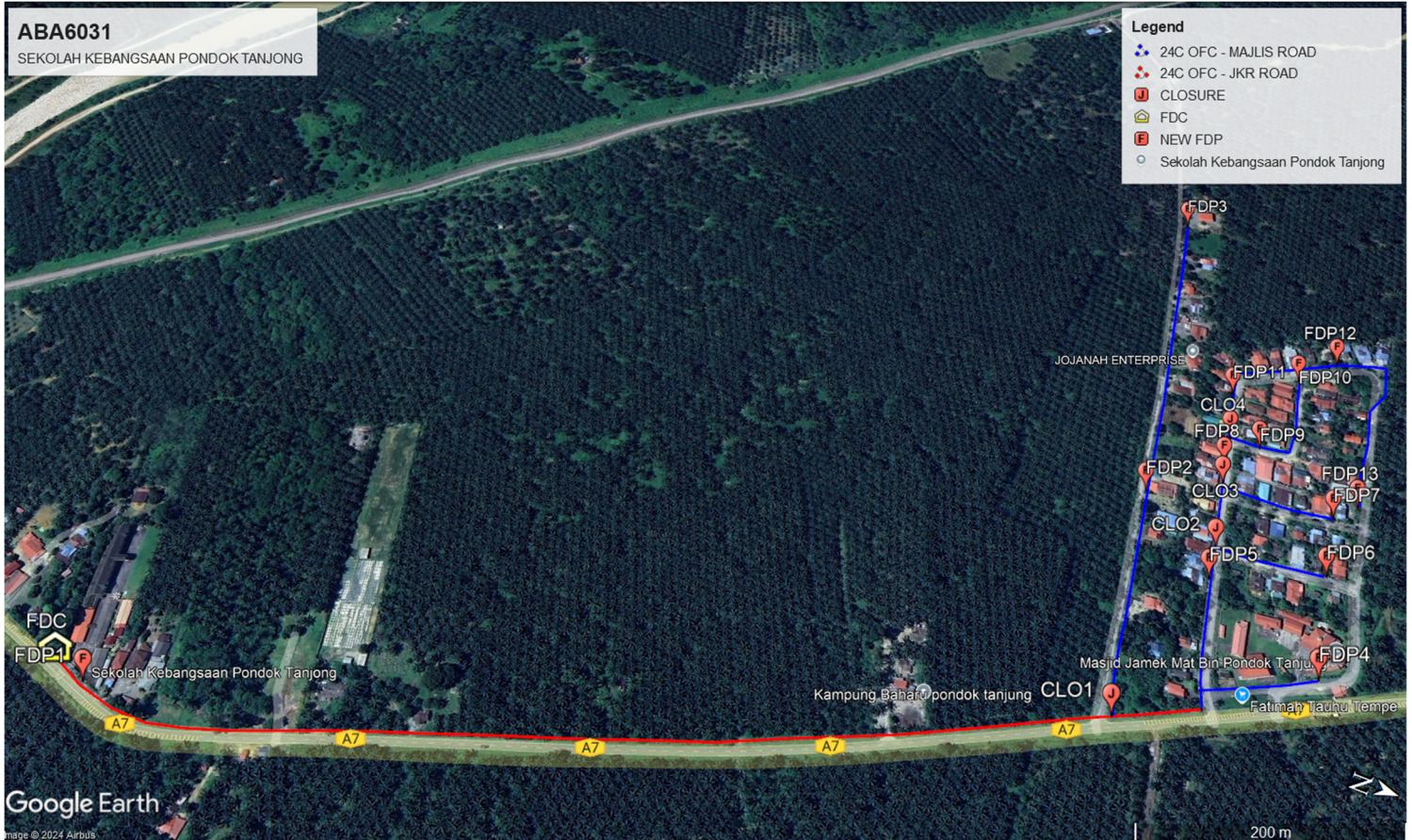
NO	ITEMS	Owner	Quantity	Distance (m)
1	HDD	JKR	-	-
		Majlis	-	-
		Estate / Private Land	-	-
2	New Pole	JKR	28	928
		Majlis	54	1,703
		Estate / Private Land	-	-
Total Distance (m)				2,631

3.0 SITE PLAN (KMZ)

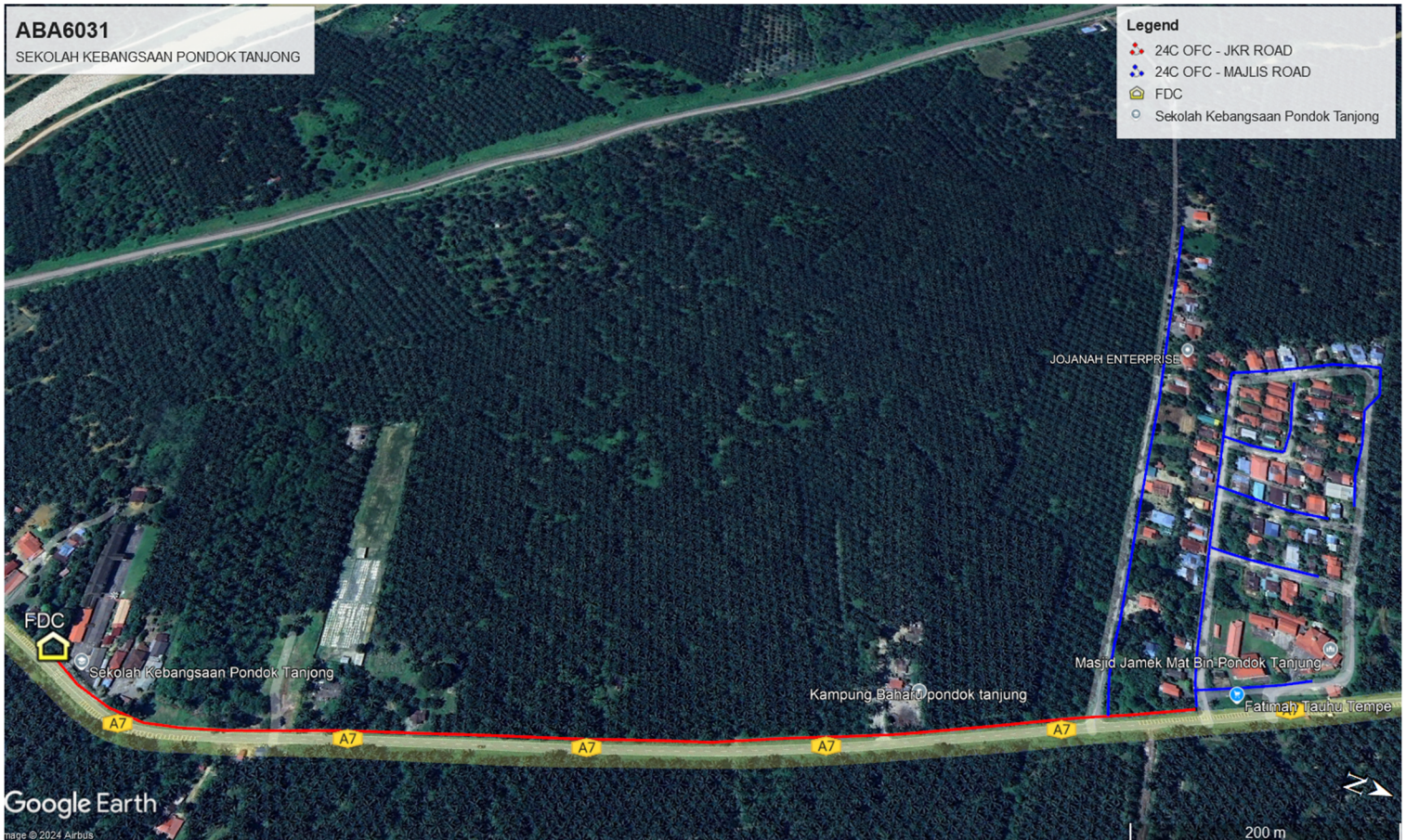
3.1 Overview Site Area (Propose New Pole)



3.2 Proposed FDP and Closure



3.3 Site Plan - KMZ Routing (All Local Authority)



Red Colour - JKR
Road Blue Colour - Majlis Road

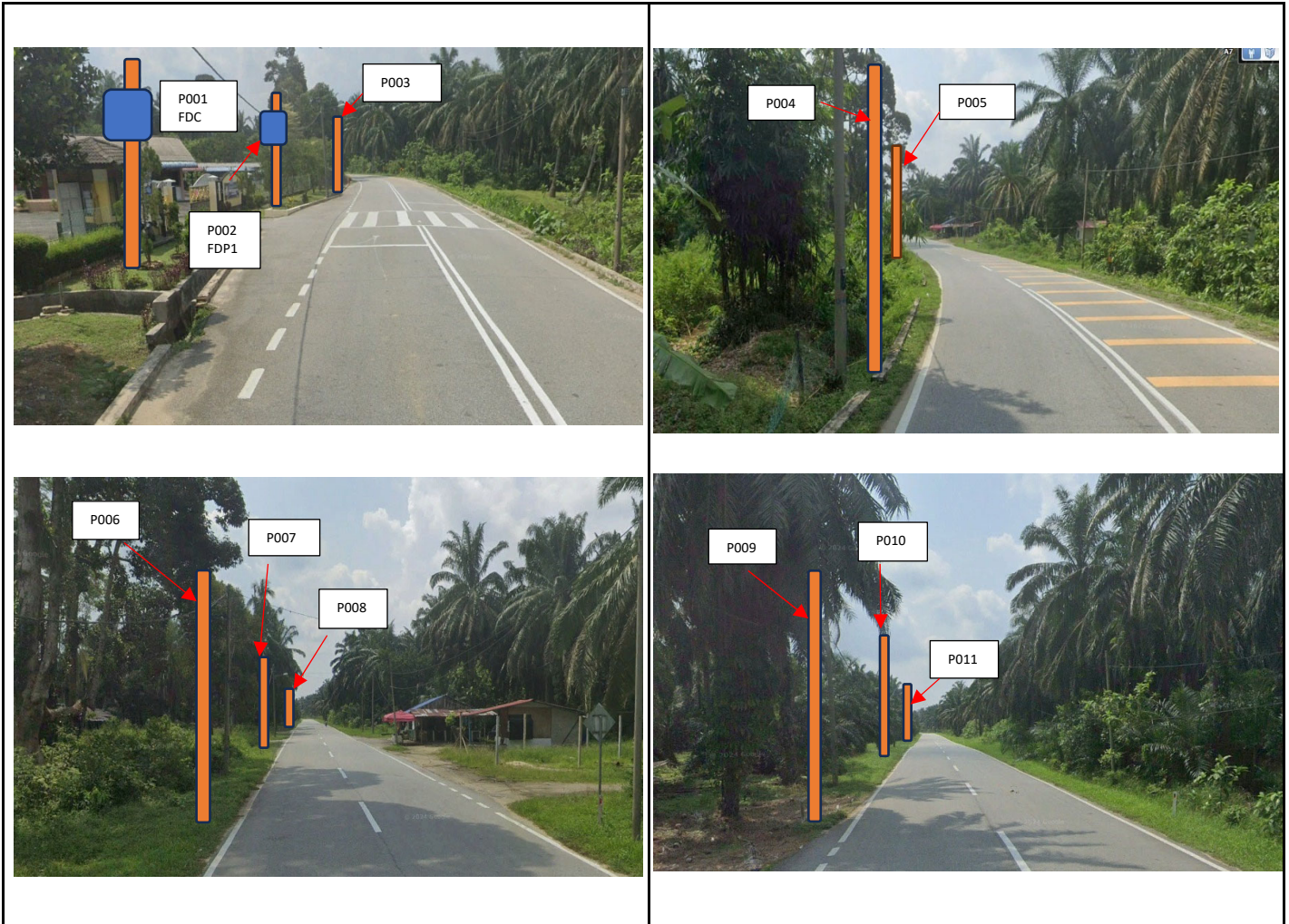
4.0 PROPOSED NEW POLE

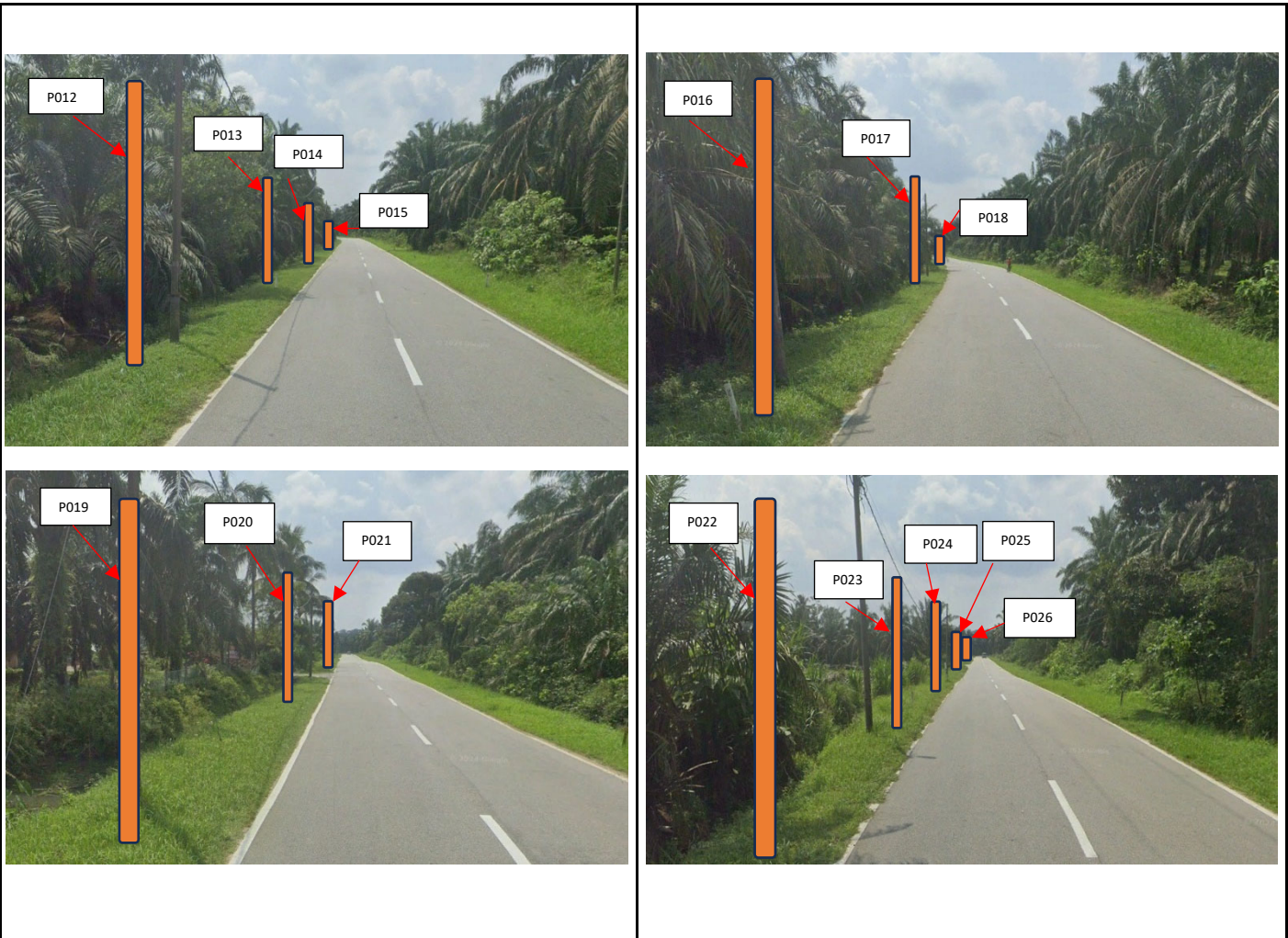
Proposed New Pole Coordinate					
No.	Pole Number	Distance (m)	Latitude	Longitude	Local Authority
1	T001	35M	5.018164	100.732406	JKR Daerah Larut Matang
2	T002	35M	5.018410	100.732481	JKR Daerah Larut Matang
3	T003	35M	5.018739	100.732572	JKR Daerah Larut Matang
4	T004	35M	5.019029	100.732573	JKR Daerah Larut Matang
5	T005	35M	5.019318	100.732495	JKR Daerah Larut Matang
6	T006	35M	5.019622	100.732400	JKR Daerah Larut Matang
7	T007	35M	5.019918	100.732299	JKR Daerah Larut Matang
8	T008	35M	5.020150	100.732219	JKR Daerah Larut Matang
9	T009	35M	5.020440	100.732112	JKR Daerah Larut Matang
10	T010	35M	5.020727	100.732008	JKR Daerah Larut Matang
11	T011	35M	5.021060	100.731886	JKR Daerah Larut Matang
12	T012	40M	5.021356	100.731785	JKR Daerah Larut Matang
13	T013	35M	5.021654	100.731680	JKR Daerah Larut Matang
14	T014	35M	5.021960	100.731579	JKR Daerah Larut Matang
15	T015	35M	5.022258	100.731478	JKR Daerah Larut Matang
16	T016	35M	5.022544	100.731361	JKR Daerah Larut Matang
17	T017	35M	5.022833	100.731250	JKR Daerah Larut Matang
18	T018	35M	5.023118	100.731130	JKR Daerah Larut Matang
19	T019	35M	5.023395	100.730996	JKR Daerah Larut Matang
20	T020	35M	5.023688	100.730851	JKR Daerah Larut Matang
21	T021	35M	5.023986	100.730717	JKR Daerah Larut Matang
22	T022	35M	5.024277	100.730571	JKR Daerah Larut Matang
23	T023	35M	5.024560	100.730434	JKR Daerah Larut Matang
24	T024	35M	5.024834	100.730300	JKR Daerah Larut Matang
25	T025	35M	5.025130	100.730148	JKR Daerah Larut Matang
26	T026	35M	5.025376	100.730025	JKR Daerah Larut Matang
27	T027	35M	5.025343	100.729713	Majlis Daerah Taiping
28	T028	35M	5.025329	100.729470	Majlis Daerah Taiping
29	T029	35M	5.025319	100.729255	Majlis Daerah Taiping
30	T030	35M	5.025314	100.728904	Majlis Daerah Taiping
31	T031	35M	5.025302	100.728595	Majlis Daerah Taiping
32	T032	35M	5.025302	100.728285	Majlis Daerah Taiping
33	T033	35M	5.025297	100.728004	Majlis Daerah Taiping

Proposed New Pole Coordinate					
No.	Pole Number	Distance (m)	Latitude	Longitude	Local Authority
34	T034	35M	5.025286	100.727677	Majlis Daerah Taiping
35	T035	35M	5.025289	100.727352	Majlis Daerah Taiping
36	T036	35M	5.025288	100.727015	Majlis Daerah Taiping
37	T037	35M	5.025283	100.726646	Majlis Daerah Taiping
38	T038	35M	5.025270	100.726313	Majlis Daerah Taiping
39	T039	35M	5.025239	100.726014	Majlis Daerah Taiping
40	T040	35M	5.025220	100.725749	Majlis Daerah Taiping
41	T041	35M	5.025187	100.725554	Majlis Daerah Taiping
42	T042	35M	5.025178	100.725186	Majlis Daerah Taiping
43	T043	35M	5.025158	100.724848	Majlis Daerah Taiping
44	T044	35M	5.025649	100.729885	Majlis Daerah Taiping
45	T045	35M	5.025953	100.729721	JKR Daerah Larut Matang
46	T046	35M	5.025925	100.729558	JKR Daerah Larut Matang
47	T047	35M	5.025912	100.729270	Majlis Daerah Taiping
48	T048	35M	5.025884	100.728930	Majlis Daerah Taiping
49	T049	35M	5.025886	100.728609	Majlis Daerah Taiping
50	T050	35M	5.025887	100.728288	Majlis Daerah Taiping
51	T051	35M	5.026168	100.728284	Majlis Daerah Taiping
52	T052	35M	5.026416	100.728286	Majlis Daerah Taiping
53	T053	35M	5.026695	100.728266	Majlis Daerah Taiping
54	T054	35M	5.025864	100.727980	Majlis Daerah Taiping
55	T055	35M	5.025855	100.727678	Majlis Daerah Taiping
56	T056	35M	5.026167	100.727699	Majlis Daerah Taiping
57	T057	35M	5.026425	100.727690	Majlis Daerah Taiping
58	T058	35M	5.026554	100.727692	Majlis Daerah Taiping
59	T059	35M	5.026728	100.727688	Majlis Daerah Taiping
60	T060	35M	5.025857	100.727462	Majlis Daerah Taiping
61	T061	35M	5.025852	100.727150	Majlis Daerah Taiping
62	T062	35M	5.026110	100.727154	Majlis Daerah Taiping
63	T063	35M	5.026332	100.727137	Majlis Daerah Taiping
64	T064	35M	5.026369	100.726864	Majlis Daerah Taiping
65	T065	35M	5.026366	100.726509	Majlis Daerah Taiping
66	T066	35M	5.026349	100.726301	Majlis Daerah Taiping
67	T067	35M	5.025833	100.726838	Majlis Daerah Taiping
68	T068	35M	5.025835	100.726661	Majlis Daerah Taiping
69	T069	35M	5.025852	100.726428	Majlis Daerah Taiping
70	T070	35M	5.026126	100.726290	Majlis Daerah Taiping
71	T071	35M	5.026395	100.726141	Majlis Daerah Taiping
72	T072	35M	5.026638	100.726034	Majlis Daerah Taiping
73	T073	35M	5.026817	100.725988	Majlis Daerah Taiping
74	T074	35M	5.027027	100.725959	Majlis Daerah Taiping
75	T075	35M	5.027007	100.726269	Majlis Daerah Taiping

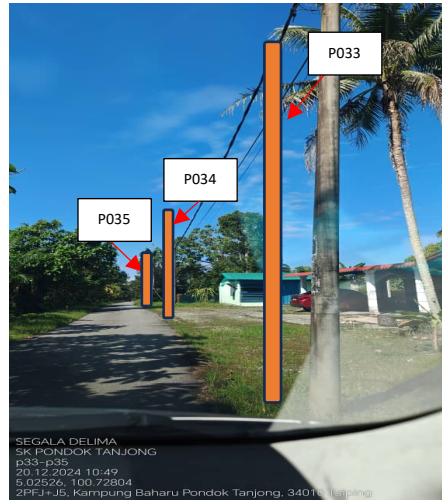
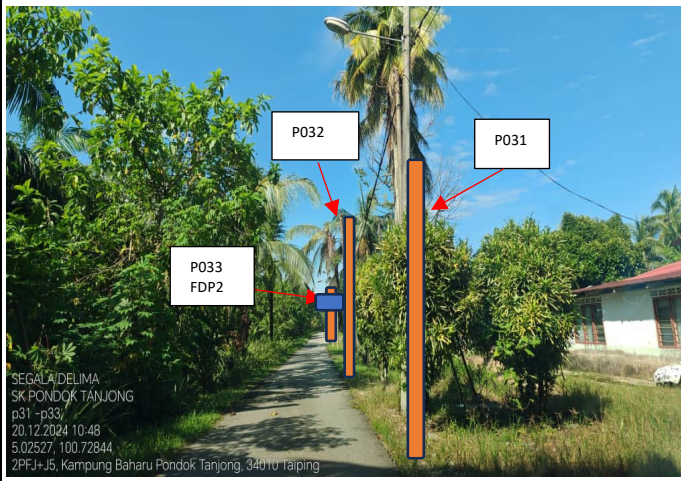
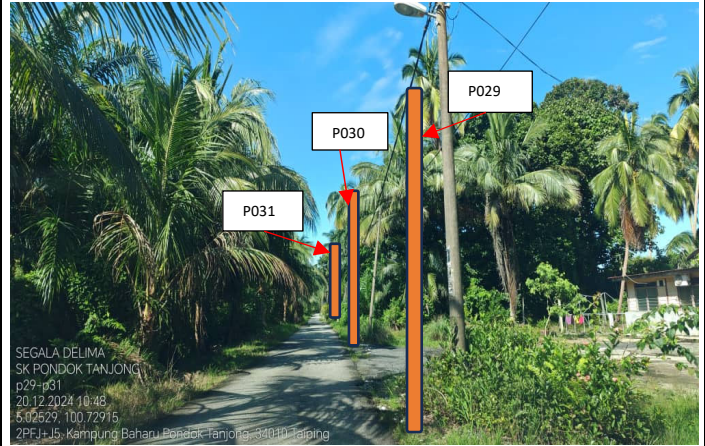
Proposed New Pole Coordinate					
No.	Pole Number	Distance (m)	Latitude	Longitude	Local Authority
76	T076	35M	5.026913	100.726468	Majlis Daerah Taiping
77	T077	35M	5.026910	100.726864	Majlis Daerah Taiping
78	T078	35M	5.026905	100.727168	Majlis Daerah Taiping
79	T079	35M	5.026902	100.727523	Majlis Daerah Taiping
80	T080	35M	5.026231	100.729407	Majlis Daerah Taiping
81	T081	35M	5.026494	100.729286	Majlis Daerah Taiping
82	T082	30M	5.026701	100.729184	Majlis Daerah Taiping

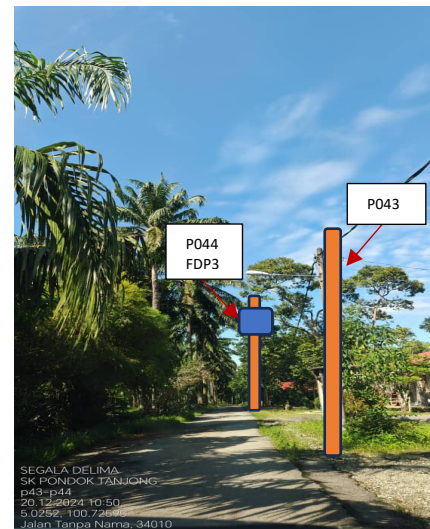
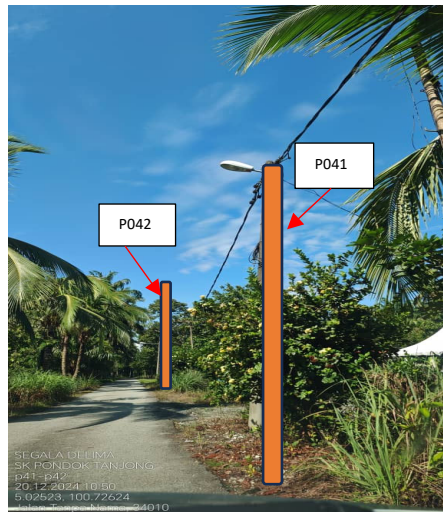
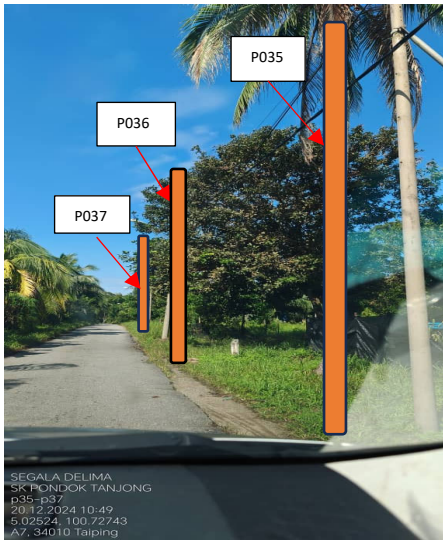
5.0 SITE PHOTOS - PROPOSED NEW POLE

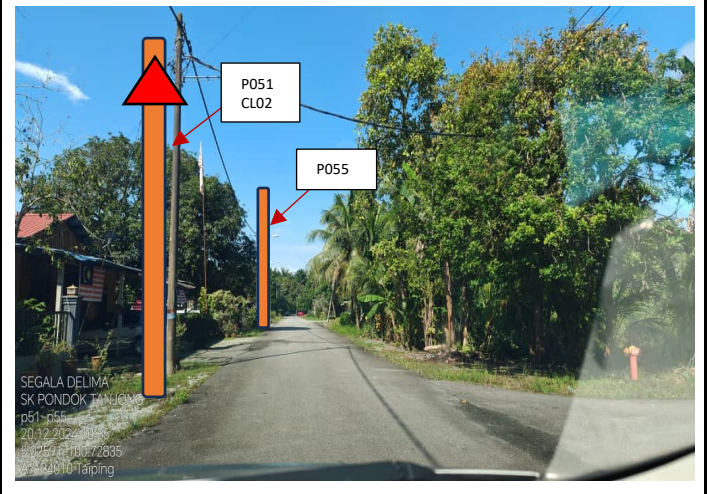
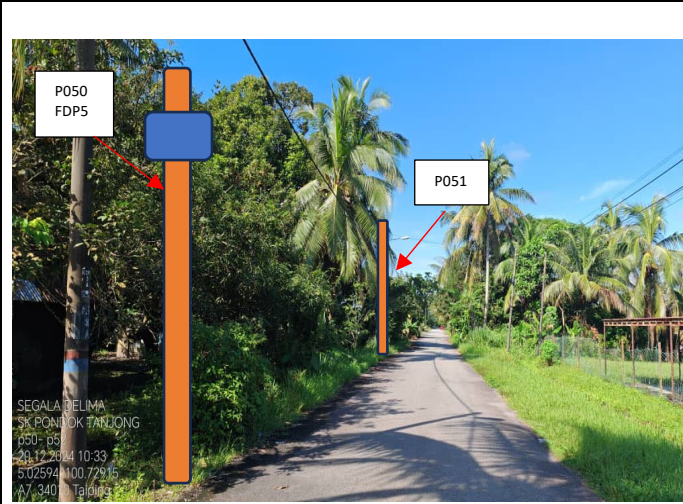


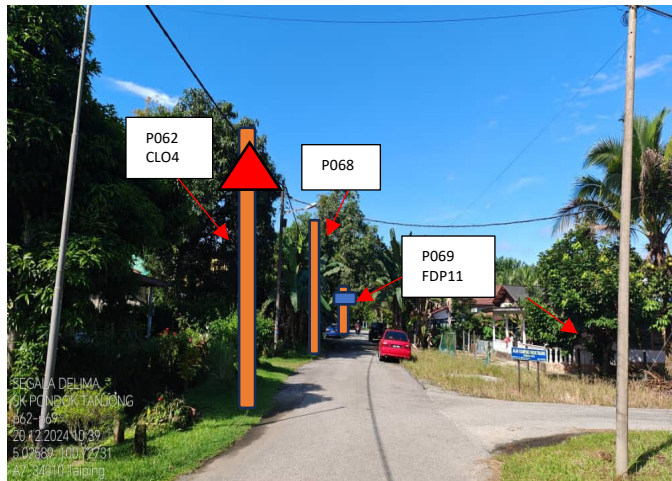
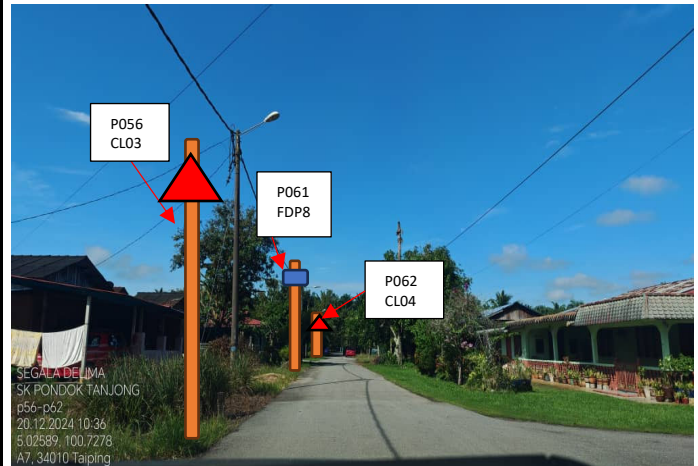
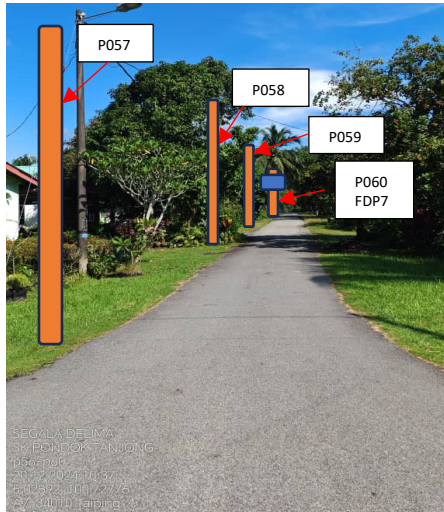


P033
FDP2

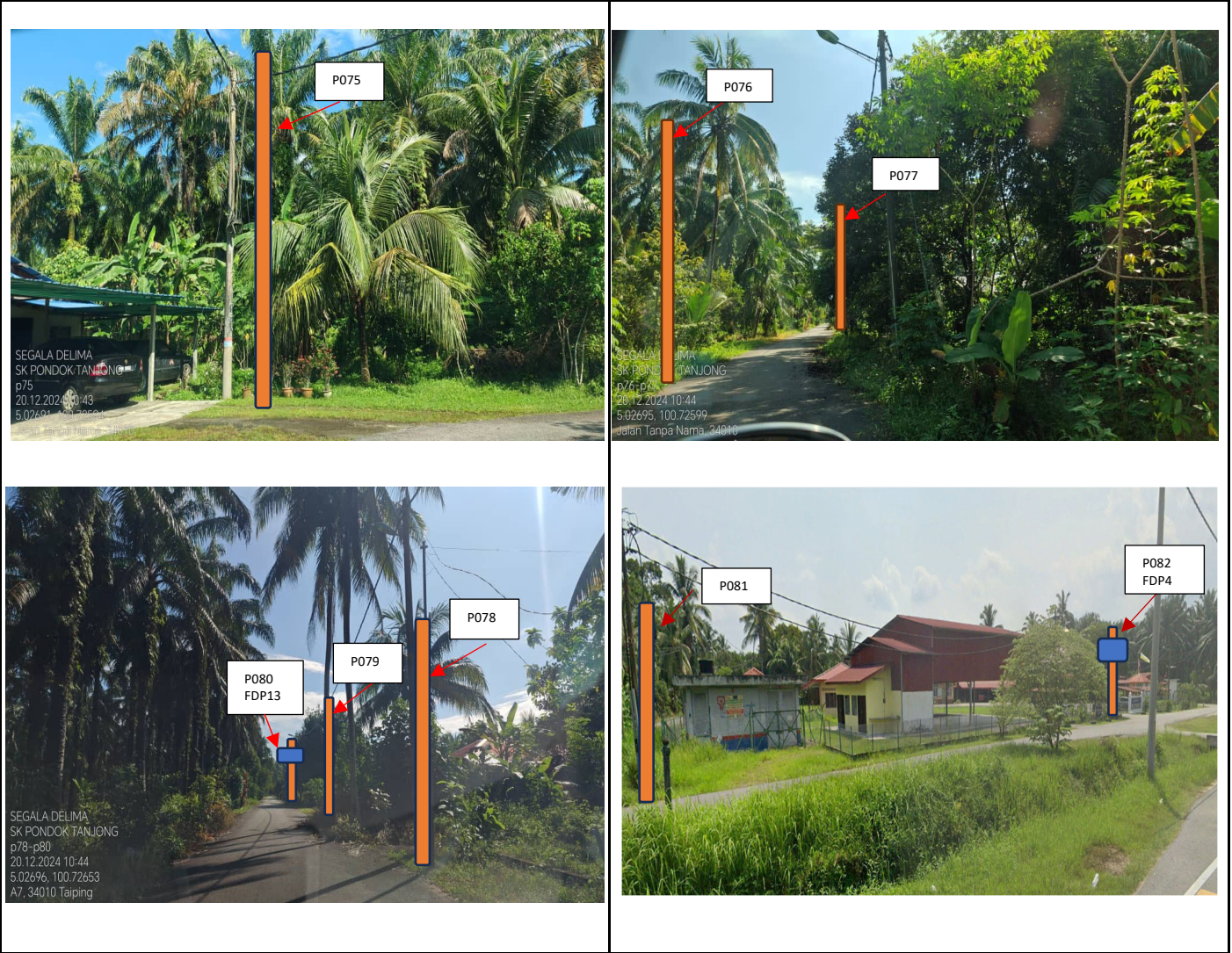






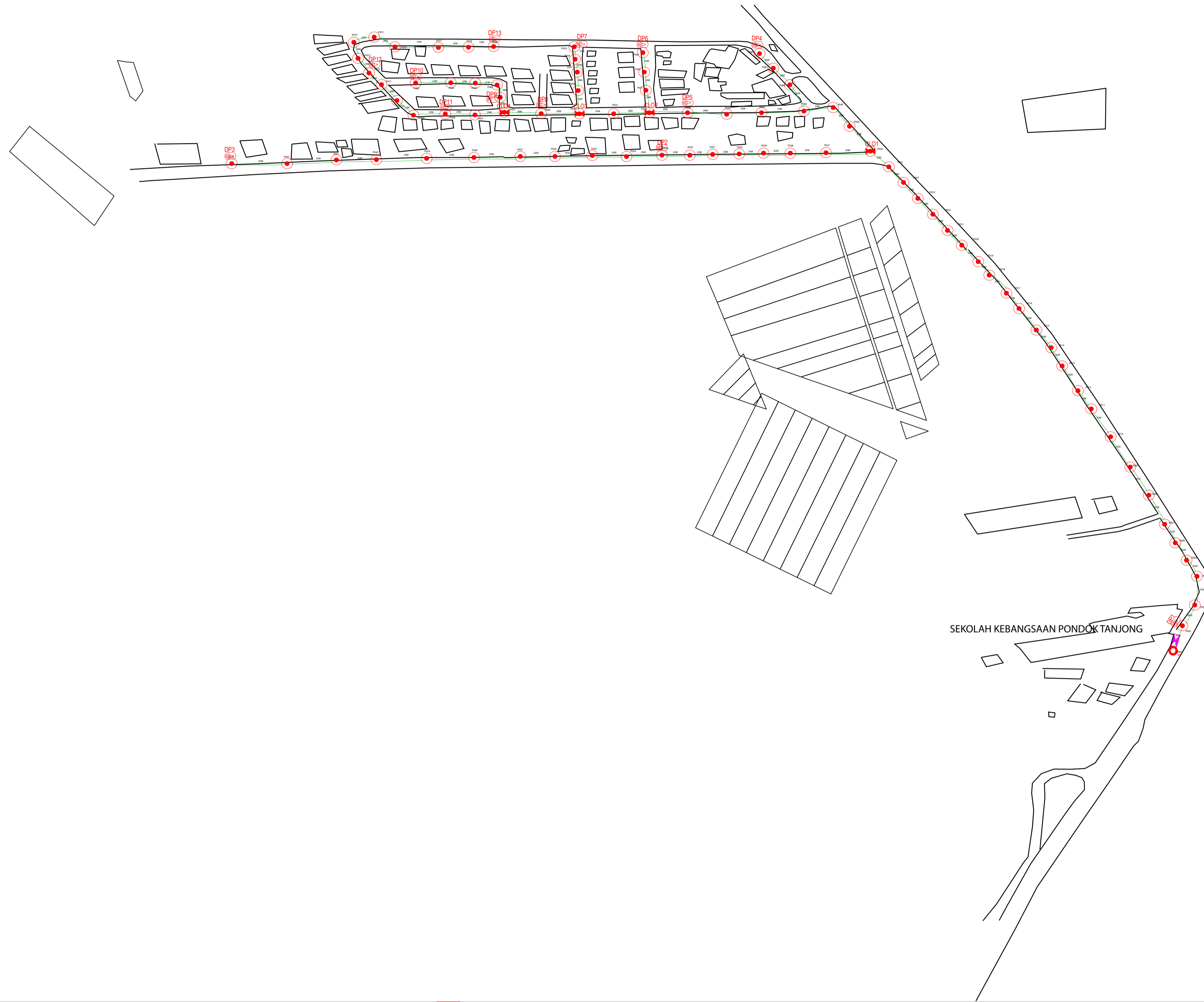






6.0 3rd PARTIES DEPENDENCIES

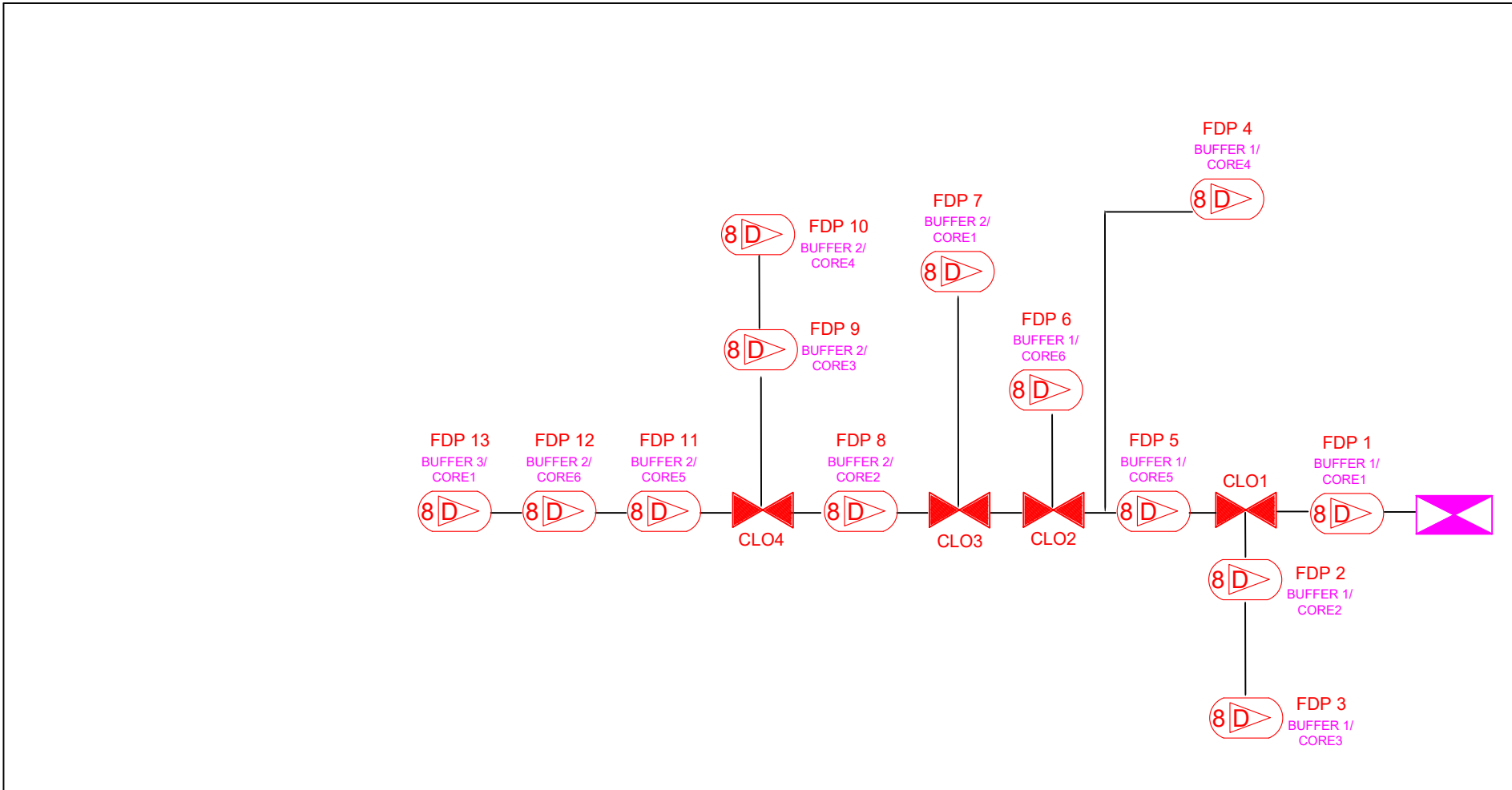
NO	LOCAL COUNCIL / AUTHORITY	REMARK
1	Majlis Daerah Taiping	1,703m
2	JKR Daerah Larut Matang	928m






	12C FOC		Installed 1:4 / 1:8 / 1:32 splitter		Installed Pole (9m)	1		Suspension		New Manhole (PIT)		Micro-Trenching (Meter)		MH NO.	
	24C FOC	2631	Installed Patch Cord		Installed Pole (7.5M)	81		Tension		New Manhole (JRC7)		Temporary Infra (Meter)		Existing TNB Pole NO.	
	48C FOC		FDC		Installed Pole (6.7M)			Pole Ring		FDP Boundary		Loop / Coil (Meter)		New Pole NO.	
	96C FOC		Closure		Existing TNB Pole	4		FDP with (1:8) splitter	13		HDD (Meter)		Active Outdoor Cabinet		Closure NO.
	144C FOC		Existing Closure		Installed Riser			Existing Manhole			Open Cut (Meter)		FDC NO.		FDP NO.

ACTUAL HOME PASS :

KEY PLAN:	PROJECT OWNER:	MAIN CONTRACTOR:	SUB-CONTRACTOR:	PROJECT TITLE:	DRAWING TITLE:	Design By :	Date :
		 PRIVASAT	 SEGALA DELIMA (M) SDN BHD NO.5, JALAN AMPANG BARU SB PUSAT PERDAGANGAN AMPANG BARU 31350 IPOH PERAK. E-MAIL : SEGALA.DELIMA@GMAIL.COM	CONTRACT FOR SURVEY TECHNICAL PROPOSAL AND WAYLEAVE & PERMITTING APPROVAL POP 2 PROJECT	ABA6031 SEKOLAH KEBANGSAAN PONDOK TANJONG		28 NOV 2024
					PROJECT PHASE:	Checked By :	Scale :
					POP 2	Job Number :	1 : 5000
						DRAWING NUMBER :	Sheet :
							1 / 1
							Size :
							A1



12C FOC	Installed 1:4 / 1:8 / 1:32 splitter	Installed Pole (9m)	Suspension	New Manhole (PIT)	Micro-Trenching (Meter)	MH1	MH NO.
24C FOC	Installed Patch Cord	Installed Pole (7.5M)	Tension	New Manhole (RC7)	Temporary Infra (Meter)	TNS-1	Existing TNB Pole NO.
48C FOC	FDC	Installed Pole (6.7M)	Pole Ring	FDP Boundary	Loop / Coil (Meter)	PX01	New Pole NO.
96C FOC	Closure	Existing TNB Pole	FDP with (1:8) splitter	HDD (Meter)	Active Outdoor Cabinet	CLO1	Closure NO.
144C FOC	Existing Closure	Installed Riser	Existing Manhole	Open Cut (Meter)	FDC NO.	DPT	FDP NO.

KEY PLAN:	PROJECT OWNER:  KEMENTERIAN KOMUNIKASI DAN DIGITAL	MAIN CONTRACTOR:  PRIVASAT	SUB-CONTRACTOR:  SERMA DELIMA (M) SDN BHD NO. 10, JALAN PERAK 10/1, TAMAN PERAK, 43000 KUALA SELANGOR, SELANGOR, MALAYSIA	PROJECT TITLE: ABA6031 SEKOLAH KEBANGSAAN PONDOK TANJONG	DRAWING TITLE: CORE ASSIGNMENT DRAWING PROJECT PHASE: POP 2	ACTUAL HOMEPASS :	Design By : NASROHAZAN Date : 9 NOV 2024 Drawn By : NASROHAZAN Scale : 1 : 5000 Checked By : (ALLO PIC) Job Number : DRAWING NUMBER : Sheet : 1 / 1 THIS PRINT AND ITS COPYRIGHT ARE THE PROPERTY OF ALLO TECHNOLOGY SDN BHD Size : A1
-----------	---	---	---	---	--	-------------------	--