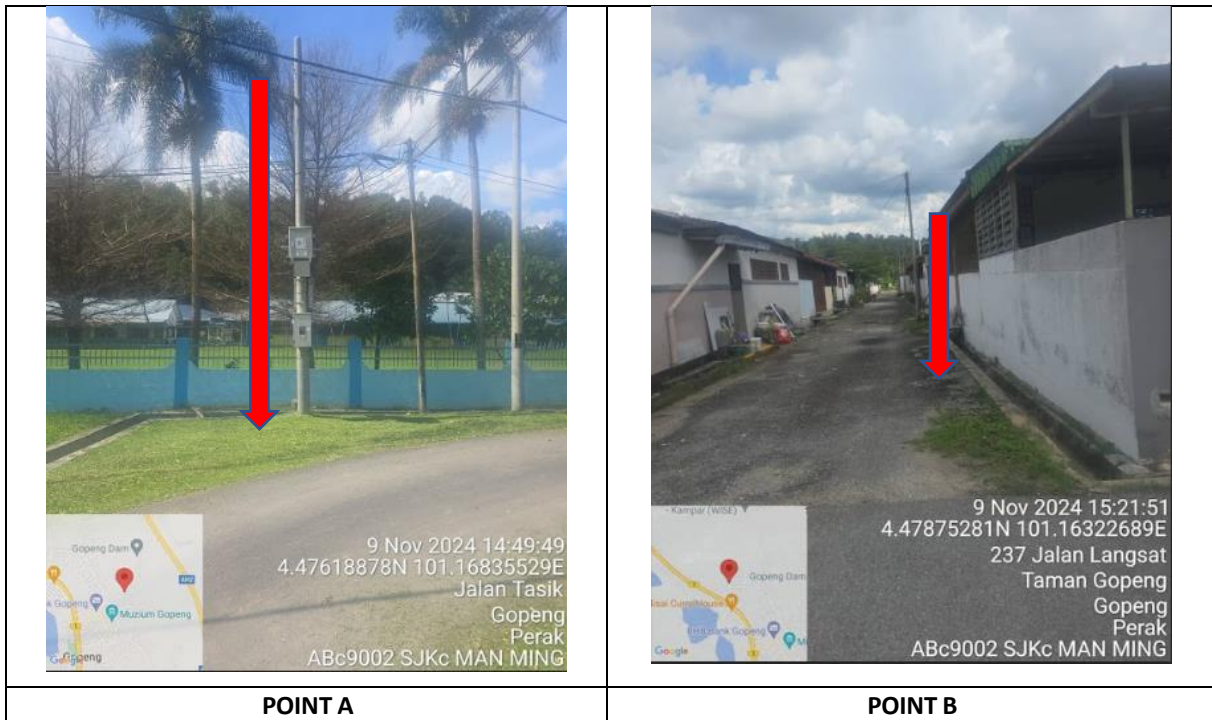


TECHNICAL PROPOSAL

POP2 ABC 9002 SEKOLAH JENIS KEBANGSAAN (CINA) MAN MING (D-SIDE)

Company Name :	WCWL Communication Sdn Bhd
Company Address :	No 127 Jalan PUJ 3/3, Taman Puncak Jalil, Bandar Putra Permai 43300 Selangor
Prepared By :	Ramdan
Date :	13 Nov 2024



Starting Point

Site / Boundary Name :	SEKOLAH JENIS KEBANGSAAN (C) MAN MING
Address :	Gopeng
District :	Kampar
Postcode :	31600
State :	Perak
GPS Coordinate :	4.467188, 101.16835529
LRD :	A

End Point

Site / Boundary Name :	SEKOLAH JENIS KEBANGSAAN (C) MAN MING
Address :	Belakang Rumah 208, Jalan Langsat, Gopeng
District :	Kampar
Postcode :	31600
State :	Perak
GPS Coordinate :	4.479349, 101.163485
LRD :	B

Work Summary

No	Proposed Distance and Method	Unit	Qty
1	Horizontal Directional Drilling (HDD)	m	0
2	Carriage Way Open trench (CW)	m	0
3	Grass Verge Open Trenching (GV)	m	0
4	Micro trenching (MT)	m	0
	Total		0

	Other Information	Unit	Qty
1	Proposed Manhole	EA	0
2	Proposed Pole	EA	71
3	Joint Closure	EA	3
4	Estimated time required for completion	days	50

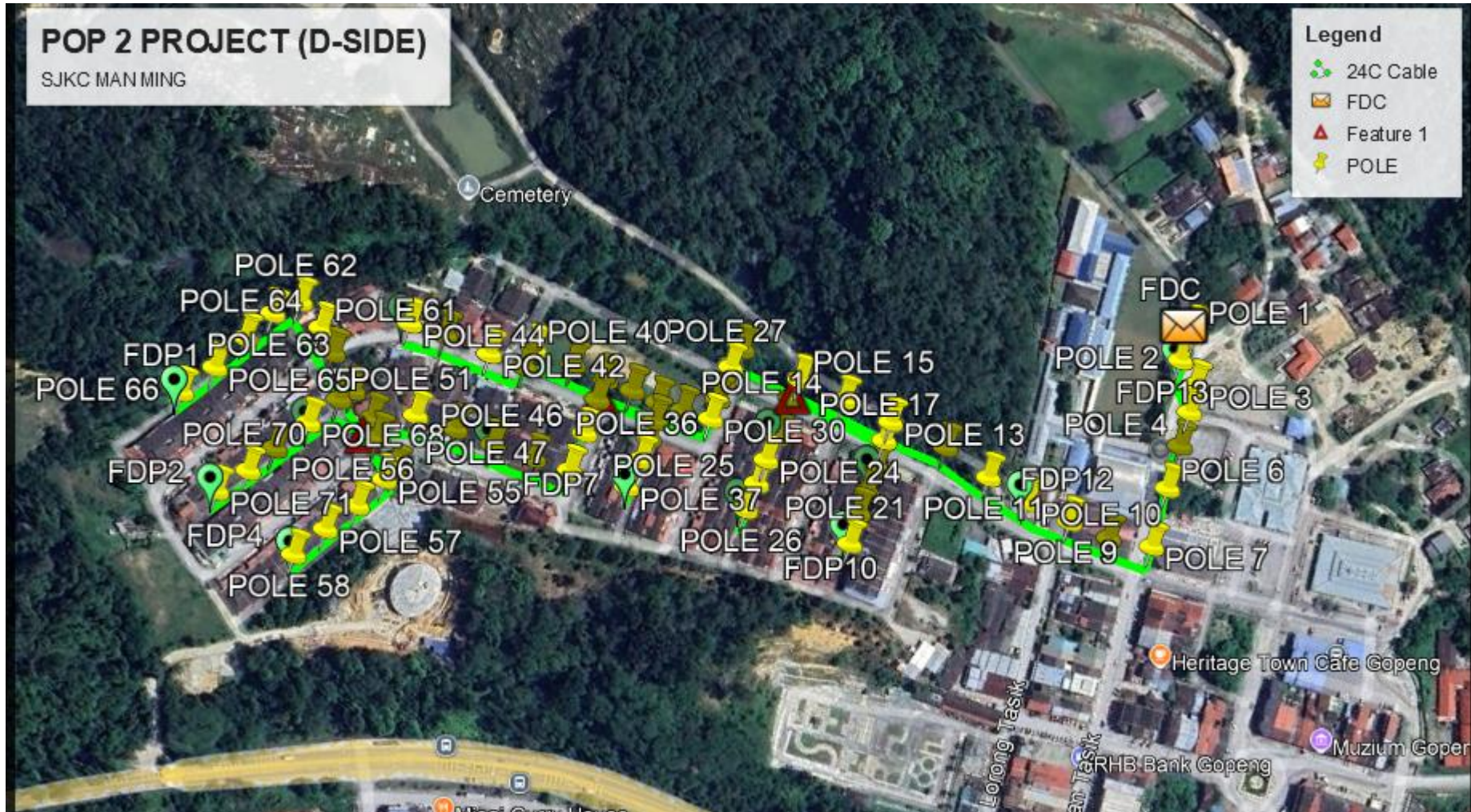
Local Authority Summary

1. Daerah Kampar

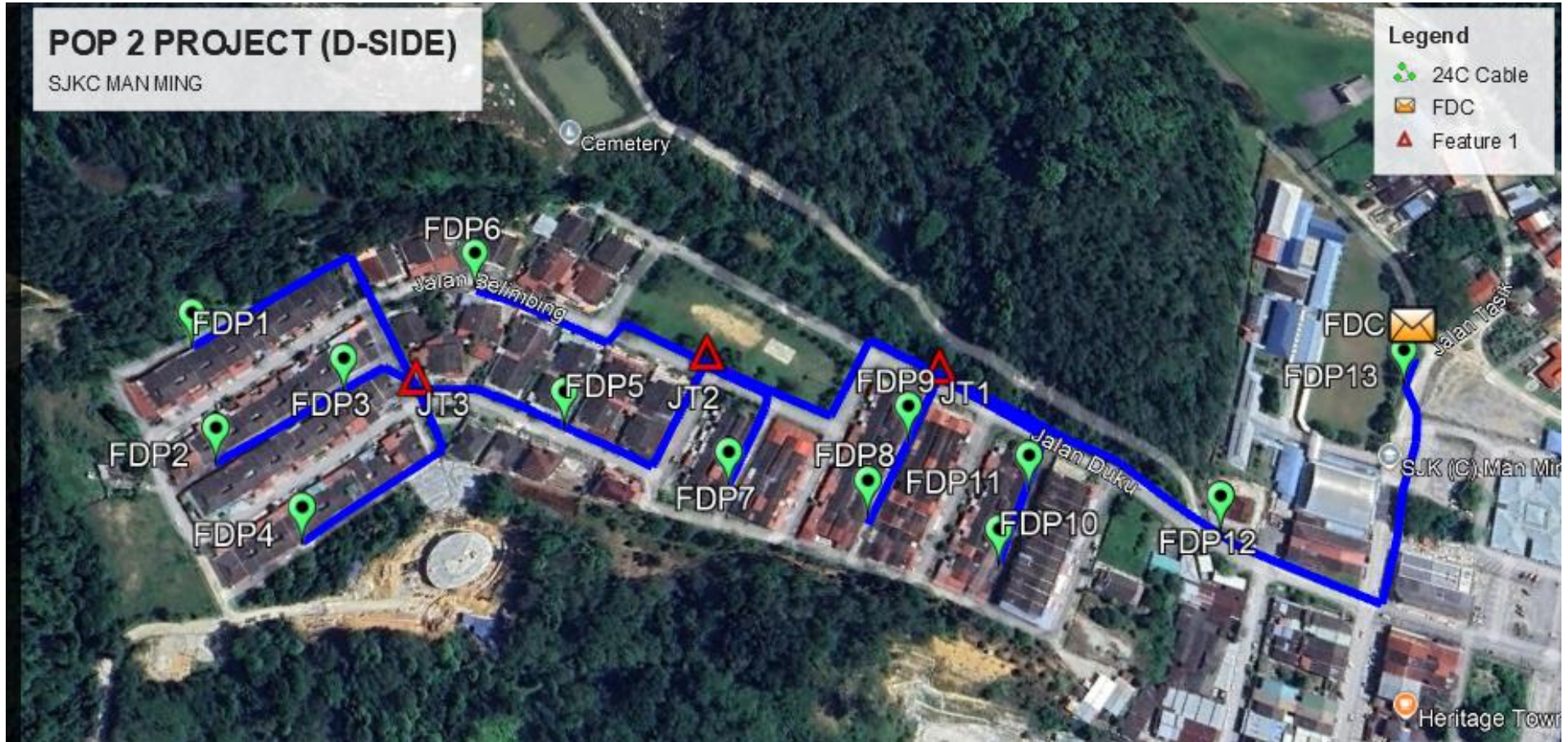
Bil	Items	Owner	Quantity	Distance
1	HDD	JKR	-	-
		Majlis	-	-
		Estate / Private Land	-	-
2	New Pole	JKR	-	-
		Majlis	71	3000m
		Estate / Private Land	-	-
3	Existing TNB Pole	JKR	-	-
		Majlis	-	-
		Estate / Private Land	-	-
Total				3000m

Site Plan – KMZ (Overview site area)

Proposed Cable and New Pole



Site Plan – KMZ Routing (All Local Authority)



Route Blue Colour - Majlis Daerah Kampar

Prop New Pole Lat & Long Table

PROPOSED POLE COORDINATE		
POLE NUMBER	LATITUDE	LONGITUDE
T 001	4.476195783	101.168270453
T 002	4.476113411	101.168105596
T 003	4.475954433	101.168085949
T 004	4.475855848	101.167970158
T 005	4.475740615	101.167812789
T 006	4.475598206	101.167613133
T 007	4.475396292	101.167346789
T 008	4.475578880	101.167186975
T 009	4.475784030	101.167071266
T 010	4.476014115	101.166950711
T 011	4.476255507	101.166861942
T 012	4.476532581	101.166774446
T 013	4.476827935	101.166620328
T 014	4.477080125	101.166491540
T 015	4.477319937	101.166367271
T 016	4.477645705	101.166219068
T 017	4.476770620	101.166530211
T 018	4.476684482	101.166406114
T 019	4.476606341	101.166281602
T 020	4.476543370	101.166171232
T 021	4.476438168	101.166028324
T 022	4.477271450	101.166266643
T 023	4.477149406	101.166071419
T 024	4.477084509	101.165947106
T 025	4.477013881	101.165827186
T 026	4.476940079	101.165690619
T 027	4.477608271	101.166107334
T 028	4.477561361	101.166021641
T 029	4.477513042	101.165941621
T 030	4.477449977	101.165844448
T 031	4.477578335	101.165749225
T 032	4.477699447	101.165671207
T 033	4.477836314	101.165600417
T 034	4.477626861	101.165598356
T 035	4.477573103	101.165510638
T 036	4.477504675	101.165405030
T 037	4.477434937	101.165251427
T 038	4.477972072	101.165521424
T 039	4.478146683	101.165430438
T 040	4.478338817	101.165313060
T 041	4.478297821	101.165212824
T 042	4.478468625	101.165104656
T 043	4.478696175	101.164976737
T 044	4.478864145	101.164863352
T 045	4.477912386	101.165417178
T 046	4.477808213	101.165250718
T 047	4.477697535	101.165061438

PROPOSED POLE COORDINATE		
POLE NUMBER	LATITUDE	LONGITUDE
T 048	4.477868262	101.164945758
T 049	4.478062384	101.164816700
T 050	4.478254701	101.164708295
T 051	4.478446223	101.164582150
T 052	4.478577289	101.164386094
T 053	4.478474449	101.164345769
T 054	4.478277864	101.164313248
T 055	4.478270063	101.164238049
T 056	4.478248629	101.164033503
T 057	4.478252938	101.163820073
T 058	4.478251646	101.163594736
T 059	4.478756525	101.164396080
T 060	4.478985950	101.164436679
T 061	4.479136772	101.164468922
T 062	4.479315213	101.164467504
T 063	4.479350846	101.164314313
T 064	4.479336191	101.164117689
T 065	4.479311149	101.163886103
T 066	4.479314048	101.163663821
T 067	4.478766030	101.164307656
T 068	4.478766603	101.164098085
T 069	4.478772200	101.163867266
T 070	4.478764660	101.163678804
T 071	4.478782014	101.163476960

Overall Manhole & Pole (Propose New & Existing)

No.	Pole & Manhole ID	Distance	Latitude	Longitude	Local Authority
1	T 001	0	4.476195783	101.168270453	Majlis Daerah Kampar
2	T 002	30	4.476113411	101.168105596	Majlis Daerah Kampar
3	T 003	50	4.475954433	101.168085949	Majlis Daerah Kampar
4	T 004	30	4.475855848	101.167970158	Majlis Daerah Kampar
5	T 005	40	4.475740615	101.167812789	Majlis Daerah Kampar
6	T 006	40	4.475598206	101.167613133	Majlis Daerah Kampar
7	T 007	50	4.475396292	101.167346789	Majlis Daerah Kampar
8	T 008	40	4.475578880	101.167186975	Majlis Daerah Kampar
9	T 009	35	4.475784030	101.167071266	Majlis Daerah Kampar
10	T 010	40	4.476014115	101.166950711	Majlis Daerah Kampar
11	T 011	30	4.476255507	101.166861942	Majlis Daerah Kampar
12	T 012	30	4.476532581	101.166774446	Majlis Daerah Kampar
13	T 013	40	4.476827935	101.166620328	Majlis Daerah Kampar
14	T 014	35	4.477080125	101.166491540	Majlis Daerah Kampar
15	T 015	40	4.477319937	101.166367271	Majlis Daerah Kampar
16	T 016	40	4.477645705	101.166219068	Majlis Daerah Kampar
17	T 017	40	4.476770620	101.166530211	Majlis Daerah Kampar
18	T 018	25	4.476684482	101.166406114	Majlis Daerah Kampar
19	T 019	25	4.476606341	101.166281602	Majlis Daerah Kampar
20	T 020	30	4.476543370	101.166171232	Majlis Daerah Kampar
21	T 021	30	4.476438168	101.166028324	Majlis Daerah Kampar
22	T 022	40	4.477271450	101.166266643	Majlis Daerah Kampar
23	T 023	30	4.477149406	101.166071419	Majlis Daerah Kampar
24	T 024	25	4.477084509	101.165947106	Majlis Daerah Kampar
25	T 025	25	4.477013881	101.165827186	Majlis Daerah Kampar
26	T 026	30	4.476940079	101.165690619	Majlis Daerah Kampar
27	T 027	30	4.477608271	101.166107334	Majlis Daerah Kampar
28	T 028	25	4.477561361	101.166021641	Majlis Daerah Kampar
29	T 029	30	4.477513042	101.165941621	Majlis Daerah Kampar
30	T 030	40	4.477449977	101.165844448	Majlis Daerah Kampar
31	T 031	40	4.477578335	101.165749225	Majlis Daerah Kampar
32	T 032	35	4.477699447	101.165671207	Majlis Daerah Kampar
33	T 033	35	4.477836314	101.165600417	Majlis Daerah Kampar
34	T 034	35	4.477626861	101.165598356	Majlis Daerah Kampar
35	T 035	35	4.477573103	101.165510638	Majlis Daerah Kampar
36	T 036	30	4.477504675	101.165405030	Majlis Daerah Kampar
37	T 037	35	4.477434937	101.165251427	Majlis Daerah Kampar
38	T 038	30	4.477972072	101.165521424	Majlis Daerah Kampar
39	T 039	40	4.478146683	101.165430438	Majlis Daerah Kampar
40	T 040	38	4.478338817	101.165313060	Majlis Daerah Kampar
41	T 041	25	4.478297821	101.165212824	Majlis Daerah Kampar
42	T 042	30	4.478468625	101.165104656	Majlis Daerah Kampar
43	T 043	40	4.478696175	101.164976737	Majlis Daerah Kampar
44	T 044	30	4.478864145	101.164863352	Majlis Daerah Kampar
45	T 045	25	4.477912386	101.165417178	Majlis Daerah Kampar
46	T 046	30	4.477808213	101.165250718	Majlis Daerah Kampar
47	T 047	28	4.477697535	101.165061438	Majlis Daerah Kampar
48	T 048	30	4.477868262	101.164945758	Majlis Daerah Kampar

No.	Pole & Manhole ID	Distance	Latitude	Longitude	Local Authority
49	T 049	28	4.478062384	101.164816700	Majlis Daerah Kampar
50	T 050	32	4.478254701	101.164708295	Majlis Daerah Kampar
51	T 051	40	4.478446223	101.164582150	Majlis Daerah Kampar
52	T 052	35	4.478577289	101.164386094	Majlis Daerah Kampar
53	T 053	20	4.478474449	101.164345769	Majlis Daerah Kampar
54	T 054	25	4.478277864	101.164313248	Majlis Daerah Kampar
55	T 055	25	4.478270063	101.164238049	Majlis Daerah Kampar
56	T 056	30	4.478248629	101.164033503	Majlis Daerah Kampar
57	T 057	30	4.478252938	101.163820073	Majlis Daerah Kampar
58	T 058	25	4.478251646	101.163594736	Majlis Daerah Kampar
59	T 059	30	4.478756525	101.164396080	Majlis Daerah Kampar
60	T 060	30	4.478985950	101.164436679	Majlis Daerah Kampar
61	T 061	25	4.479136772	101.164468922	Majlis Daerah Kampar
62	T 062	30	4.479315213	101.164467504	Majlis Daerah Kampar
63	T 063	30	4.479350846	101.164314313	Majlis Daerah Kampar
64	T 064	28	4.479336191	101.164117689	Majlis Daerah Kampar
65	T 065	25	4.479311149	101.163886103	Majlis Daerah Kampar
66	T 066	30	4.479314048	101.163663821	Majlis Daerah Kampar
67	T 067	15	4.478766030	101.164307656	Majlis Daerah Kampar
68	T 068	25	4.478766603	101.164098085	Majlis Daerah Kampar
69	T 069	30	4.478772200	101.163867266	Majlis Daerah Kampar
70	T 070	28	4.478764660	101.163678804	Majlis Daerah Kampar
71	T 071	28	4.478782014	101.163476960	Majlis Daerah Kampar



PROJEK PENYEDIAAN DAN PENYELENGGARAAN POINT OF PRESENCE (POP)
FASA 2 : HAB INFRASTRUKTUR GENTIAN OPTIK BERHAMPIRAN DENGAN
SEKOLAH, KAWASAN PERINDUSTRIAN, PREMIS KERAJAAN DAN KOMUNITI
SEKITARNYA OLEH KEMENTERIAN KOMUNIKASI MALAYSIA – ZON UTARA
(KKMM.400-11/17/132(1))



Site Photos – Proposed Pole 7.5m



Site Photos – Proposed Pole 7.5m






LEGEND	NOS.		NOS.		NOS.		NOS.		NOS.		NOS.		
	12C FOC		Installed 1:4 splitter in FDC		Installed Pole (9m)		New Manhole(JRC7)		TS / TB	Tension Small / Tension Big		MH1	MH NO.
	24C FOC		FDP with (1:8) splitter		Installed Riser		House Number		Existing Manhole		TKS-1	Existing TNB Pole NO.	
	48C FOC		Closure		Suspension Big		Existing TNB Pole		Closure NO.		P001	New Pole NO.	
	96C FOC		New Manhole (PIT)		Suspension Small		LOOP		FDP NO.		FDC	FDC NO.	
	144C FOC		Installed Pole (7.5M)		FDC		FDP Boundary		SEE A-A in this page		SEE SHEET XXX		

KEY PLAN :

PROJECT OWNER :



APEX COMMUNICATION SDN BHD
 12th Floor, Menara Hap Seng,
 50250 Jalan P. Ramlee,
 Kuala Lumpur

MAIN CONTRACTOR



WCWL COMMUNICATION SDN BHD
 127 Jln PUJ 3/3, Taman Puncak Jalil,
 Bandar Putra Permai, 43300,
 Seri Kembangan, Selangor

SUB-CONTRACTOR :

PROJECT TITLE:
 CONTRACTOR FOR SURVEY, TECHNICAL PROPOSAL AND WAYLEAVE & PERMIT APPROVAL - POP2 PROJECT
 Drawing Title :
 Site Schematic Drawing Technical Proposal For

DRAWING TITLE:
 AS-BUILD SITE PLAN DRAWING
 CONSTRUCTION DRAWING
 ABC9002
 SEKOLAH JENIS KEBANGSAAN (CINA)
 MAN MING
 PROJECT PHASE:
 POP 2

Design By : ASYRAF	Date : DATE
Drawn By : ASYRAF	Scale : 1:100
Checked By : ASYRAF	Job Number : JOB_NUMBER
DRAWING NUMBER : ABC9002-CD-01	Sheet : 1/1
THIS PRINT AND ITS COPYRIGHT ARE THE PROPERTY OF ALLO TECHNOLOGY SDN BHD	
Size : XX	