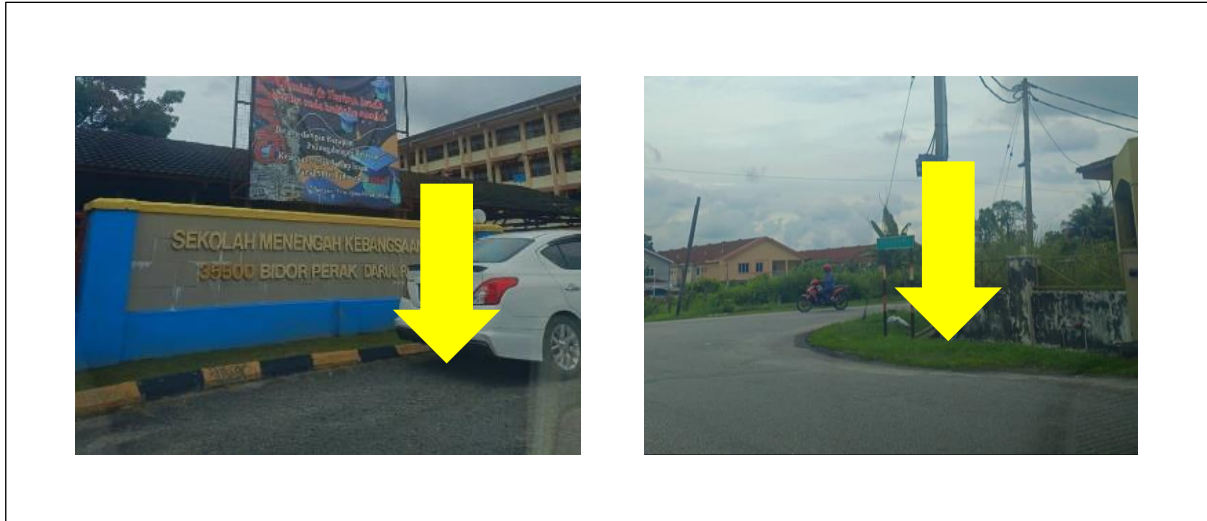


## AEA0042 SEKOLAH MENENGAH KEBANGSAAN BIDOR (D-SIDE)

Company Name	:	STEADCOM SDN BHD
Company Address	:	11-3, Jalan Puteri 2/6, Bandar Puteri, 47100 Puchong, Selangor
Prepared By	:	Ashraff Azizi
Date	:	10/12/2024



POINT A

POINT B

### Starting Point

Site / Boundary Name	:	SEKOLAH MENENGAH KEBANGSAAN BIDOR
Address	:	Lebu Permata 1, Kampung Padang Bidor, 35500 Bidor, Perak
District	:	Bidor
Postcode	:	35500
State	:	Perak
GPS Coordinate	:	4.116092, 101.276335
LRD	:	A

### End Point

Site / Boundary Name	:	SEKOLAH MENENGAH KEBANGSAAN BIDOR
Address	:	Jalan Intan, Taman Krishnan, 35800 Slim River, Perak.
District	:	Slim River
Postcode	:	35800
State	:	Perak
GPS Coordinate	:	4.119273, 101.272924
LRD	:	B

### Work Summary

No	Proposed Distance and Method	Unit	Qty
1	Horizontal Directional Drilling (HDD)	m	0
2	Carriage Way Open trench (CW)	m	0
3	Grass Verge Open Trenching (GV)	m	0
4	Micro trenching (MT)	m	0
	Total		0

	Other Information	Unit	Qty
1	Proposed Manhole	EA	0
2	Proposed Pole	EA	67
3	Joint Closure	EA	1
4	Estimated time required for completion	days	30

### Local Authority Summary

1. Daerah Tanjung Malim

Bil	Items	Owner	Quantity	Distance(m)
1	HDD	JKR	-	-
		Majlis	-	-
		Estate / Private Land	-	-
2	New Pole	JKR	-	-
		Majlis	67	2685m
		Estate / Private Land	-	-
3	Existing TNB Pole	JKR	-	-
		Majlis	-	-
		Estate / Private Land	-	-
Total				2685m

**Site Plan – KMZ (Overview site area)**

**Proposed FDP and Closure**



**Proposed New Pole**



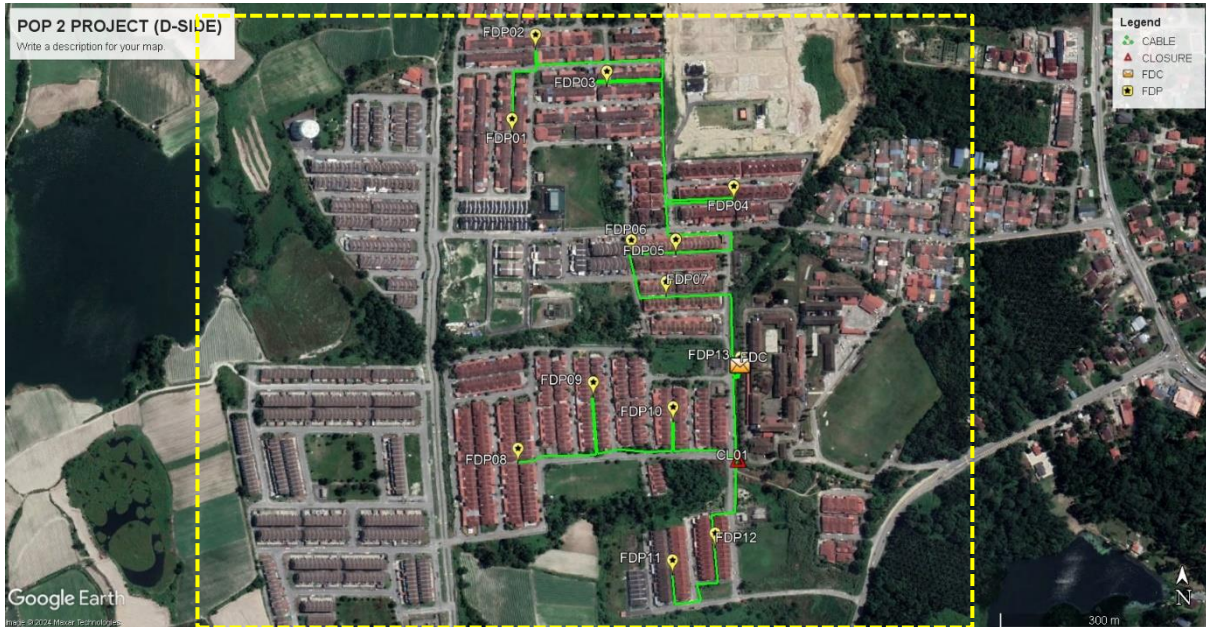
**Site Plan – KMZ Routing (All Local Authority)**



**Green Colour – JKR Daerah Muallim**  
**Red Colour – Majlis Daerah Tanjung Malim**

Site Plan – KMZ Routing (All site area)

Route 1

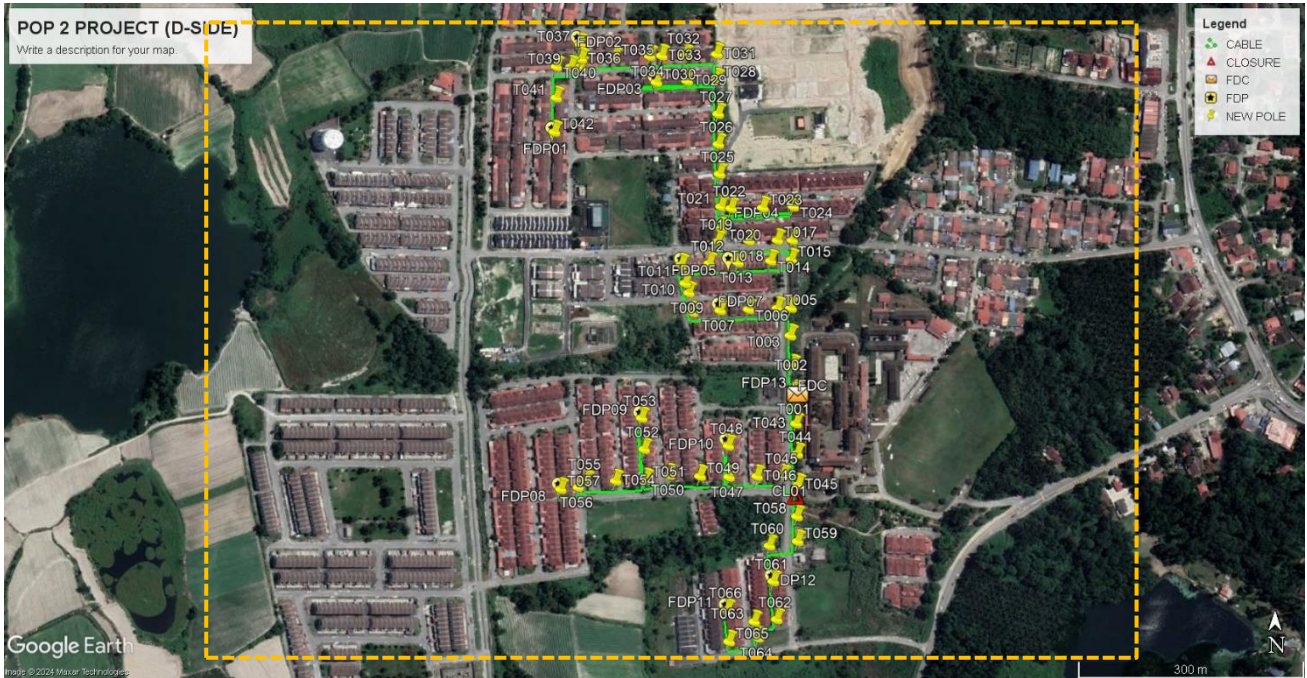


Route 1.1



**Route 1.2**

**Site Plan – KMZ Routing (Proposed new Pole)**



**Proposed New Pole Lat & Long Table**

No.	Label	Pole & Manhole ID	Latitude	Longitude	Local Authority
1	OLT/FDC	-	4.116102	101.275876	Majlis Daerah Tapah
2	FDP01	T001	4.116142	101.289951	Majlis Daerah Tapah
3	FDP02	T007	4.117139	101.290028	Majlis Daerah Tapah
4	FDP03	T011	4.117683	101.288878	Majlis Daerah Tapah
5	FDP04	T013	4.117713	101.288809	Majlis Daerah Tapah
6	FDP05	T024	4.118381	101.289253	Majlis Daerah Tapah
7	FDP06	T030	4.119865	101.289302	Majlis Daerah Tapah
8	FDP07	T037	4.120319	101.289338	Majlis Daerah Tapah
9	FDP08	T042	4.119273	101.291223	Majlis Daerah Tapah
10	FDP09	T048	4.115521	101.291647	Majlis Daerah Tapah
11	FDP10	T053	4.115854	101.291689	Majlis Daerah Tapah
12	FDP11	T057	4.115003	101.291916	Majlis Daerah Tapah
13	FDP12	T061	4.113900	101.291194	Majlis Daerah Tapah
14	FDP13	T066	4.113558	101.290674	Majlis Daerah Tapah
15	CL01	T045	4.115054	101.275847	Majlis Daerah Tapah

**Overall Pole (Proposed New)**

Pole & Manhole ID	Distance	Latitude	Longitude	Local Authority
T001	40	4.116142	101.275814	Majlis Daerah Tapah
T002	40	4.116475	101.275782	Majlis Daerah Tapah
T003	40	4.116839	101.275754	Majlis Daerah Tapah
T004	40	4.117169	101.275761	Majlis Daerah Tapah
T005	40	4.117168	101.275600	Majlis Daerah Tapah
T006	40	4.117153	101.275254	Majlis Daerah Tapah
T007	40	4.117139	101.274912	Majlis Daerah Tapah
T008	40	4.117115	101.274583	Majlis Daerah Tapah
T009	40	4.117350	101.274536	Majlis Daerah Tapah
T010	40	4.117463	101.274493	Majlis Daerah Tapah
T011	40	4.117683	101.274447	Majlis Daerah Tapah
T012	40	4.117702	101.274781	Majlis Daerah Tapah
T013	40	4.117713	101.275125	Majlis Daerah Tapah
T014	40	4.117732	101.275519	Majlis Daerah Tapah
T015	40	4.117745	101.275766	Majlis Daerah Tapah
T016	40	4.117979	101.275776	Majlis Daerah Tapah
T017	40	4.117979	101.275601	Majlis Daerah Tapah
T018	40	4.117972	101.275257	Majlis Daerah Tapah
T019	40	4.117962	101.274883	Majlis Daerah Tapah
T020	40	4.118117	101.274929	Majlis Daerah Tapah
T021	40	4.118381	101.274924	Majlis Daerah Tapah
T022	40	4.118360	101.275043	Majlis Daerah Tapah
T023	40	4.118367	101.275424	Majlis Daerah Tapah
T024	40	4.118381	101.275790	Majlis Daerah Tapah
T025	40	4.118770	101.274904	Majlis Daerah Tapah
T026	40	4.119127	101.274890	Majlis Daerah Tapah
T027	40	4.119488	101.274887	Majlis Daerah Tapah
T028	40	4.119896	101.274870	Majlis Daerah Tapah
T029	40	4.119882	101.274516	Majlis Daerah Tapah
T030	40	4.119865	101.274148	Majlis Daerah Tapah
T031	40	4.120202	101.274872	Majlis Daerah Tapah
T032	40	4.120187	101.274494	Majlis Daerah Tapah
T033	40	4.120184	101.274211	Majlis Daerah Tapah
T034	40	4.120179	101.274066	Majlis Daerah Tapah
T035	40	4.120157	101.273645	Majlis Daerah Tapah
T036	40	4.120143	101.273246	Majlis Daerah Tapah
T037	40	4.120319	101.273238	Majlis Daerah Tapah
T038	40	4.120052	101.273239	Majlis Daerah Tapah
T039	40	4.120050	101.273121	Majlis Daerah Tapah
T040	40	4.120054	101.272948	Majlis Daerah Tapah
T041	40	4.119682	101.272945	Majlis Daerah Tapah
T042	40	4.119273	101.272924	Majlis Daerah Tapah
T043	40	4.115786	101.275822	Majlis Daerah Tapah

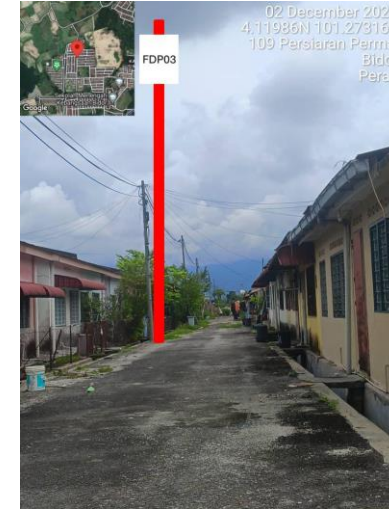


PROJEK PENYEDIAAN DAN PENYELENGGARAAN POINT OF PRESENCE (POP) FASA 2: HAB INFRASTRUKTUR GENTIAN OPTIK BERHAMPIRAN DENGAN SEKOLAH, KAWASAN PERINDUSTRIAN, PREMIS KERAJAAN DAN KOMUNITI SEKITARNYA OLEH KEMENTERIAN KOMUNIKASI MALAYSIA - ZON UTARA (KKMM.400-11/17/132(1))



T044	40	4.115426	101.275836	Majlis Daerah Tapah
T045	40	4.115054	101.275847	Majlis Daerah Tapah
T046	40	4.115164	101.275666	Majlis Daerah Tapah
T047	40	4.115157	101.275354	Majlis Daerah Tapah
T048	40	4.115150	101.275018	Majlis Daerah Tapah
T049	40	4.115521	101.275010	Majlis Daerah Tapah
T050	40	4.115158	101.274670	Majlis Daerah Tapah
T051	40	4.115172	101.274304	Majlis Daerah Tapah
T052	40	4.115116	101.274020	Majlis Daerah Tapah
T053	40	4.115480	101.274001	Majlis Daerah Tapah
T054	40	4.115854	101.273970	Majlis Daerah Tapah
T055	40	4.115102	101.273660	Majlis Daerah Tapah
T056	40	4.115096	101.273307	Majlis Daerah Tapah
T057	40	4.115025	101.273211	Majlis Daerah Tapah
T058	40	4.115003	101.272999	Majlis Daerah Tapah
T059	40	4.114678	101.275833	Majlis Daerah Tapah
T060	40	4.114380	101.275841	Majlis Daerah Tapah
T061	40	4.114328	101.275502	Majlis Daerah Tapah
T062	40	4.113900	101.275549	Majlis Daerah Tapah
T063	40	4.113447	101.275591	Majlis Daerah Tapah
T064	40	4.113419	101.275320	Majlis Daerah Tapah
T065	40	4.113227	101.275366	Majlis Daerah Tapah
T066	40	4.113180	101.275019	Majlis Daerah Tapah
T067	40	4.113558	101.274996	Majlis Daerah Tapah

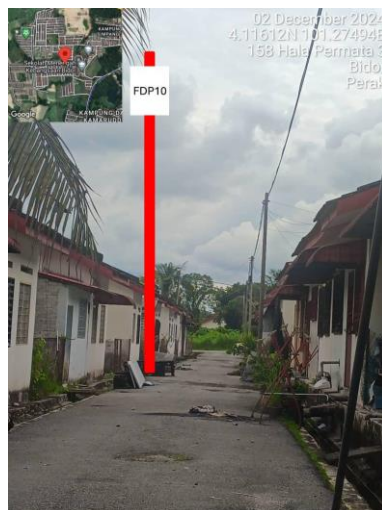
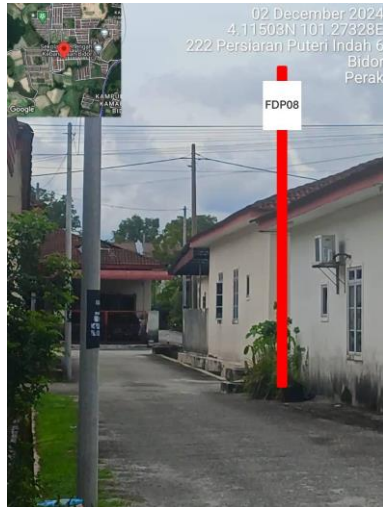
**Site Photos - Proposed to install pole**



PROJEK PENYEDIAAN DAN PENYELENGGARAAN POINT OF PRESENCE (POP) FASA 2: HAB INFRASTRUKTUR GANTIAN OPTIK BERHAMPIRAN DENGAN SEKOLAH, KAWASAN PERINDUSTRIAN, PREMIS KERAJAAN DAN KOMUNITI SEKITARNYA OLEH KEMENTERIAN KOMUNIKASI MALAYSIA - ZON UTARA (KKMM.400-11/17/132(1))



PROJEK PENYEDIAAN DAN PENYELENGGARAAN POINT OF PRESENCE (POP) FASA 2: HAB INFRASTRUKTUR GENTIAN OPTIK BERHAMPIRAN DENGAN SEKOLAH, KAWASAN PERINDUSTRIAN, PREMIS KERAJAAN DAN KOMUNITI SEKITARNYA OLEH KEMENTERIAN KOMUNIKASI MALAYSIA - ZON UTARA (KKMM.400-11/17/132(1))



PROJEK PENYEDIAAN DAN PENYELENGGARAAN POINT OF PRESENCE (POP) FASA 2: HAB INFRASTRUKTUR GENTIAN OPTIK BERHAMPIRAN DENGAN SEKOLAH, KAWASAN PERINDUSTRIAN, PREMIS KERAJAAN DAN KOMUNITI SEKITARNYA OLEH KEMENTERIAN KOMUNIKASI MALAYSIA - ZON UTARA (KKMM.400-11/17/132(1))



3rd Parties Dependencies

No.	Local Council/ Authority	Remark
1	Majlis Daerah Tapah	
2		
3		
4		
5		
6		



LEGEND	NOS.	NOS.	NOS.	NOS.	NOS.	NOS.	NOS.	NOS.	NOS.	NOS.			
12C FOC		Installed 1:4 / 1:8 / 1:32 splitter		Installed Pole (9m)		Suspension		New Manhole (PIT)		Micro-Trenching (Meter)		MHI	MH NO.
24C FOC	268	Installed Patch Cord		Installed Pole (7.5M)	66	Tension		New Manhole(JRC7)		Temporary Infra (Meter)		TKS-1	Existing TNB Pole NO.
48C FOC		FDC	1	Installed Pole (6.7M)		Pole Ring		FDP Boundary		Loop / Coil (Meter)		P001	New Pole NO.
96C FOC		Closure	1	Existing TNB Pole		FDP with (1:8) splitter	13	HDD (Meter)		Active Outdoor Cabinet		CL01	Closure NO.
144C FOC		Existing Closure		Installed Riser		Existing Manhole		Open Cut (Meter)		FDC NO.		DP1	FDP NO.

ACTUAL HOMEPASS :

KEY PLAN :  
  
POP2 PROJECT IN PERAK

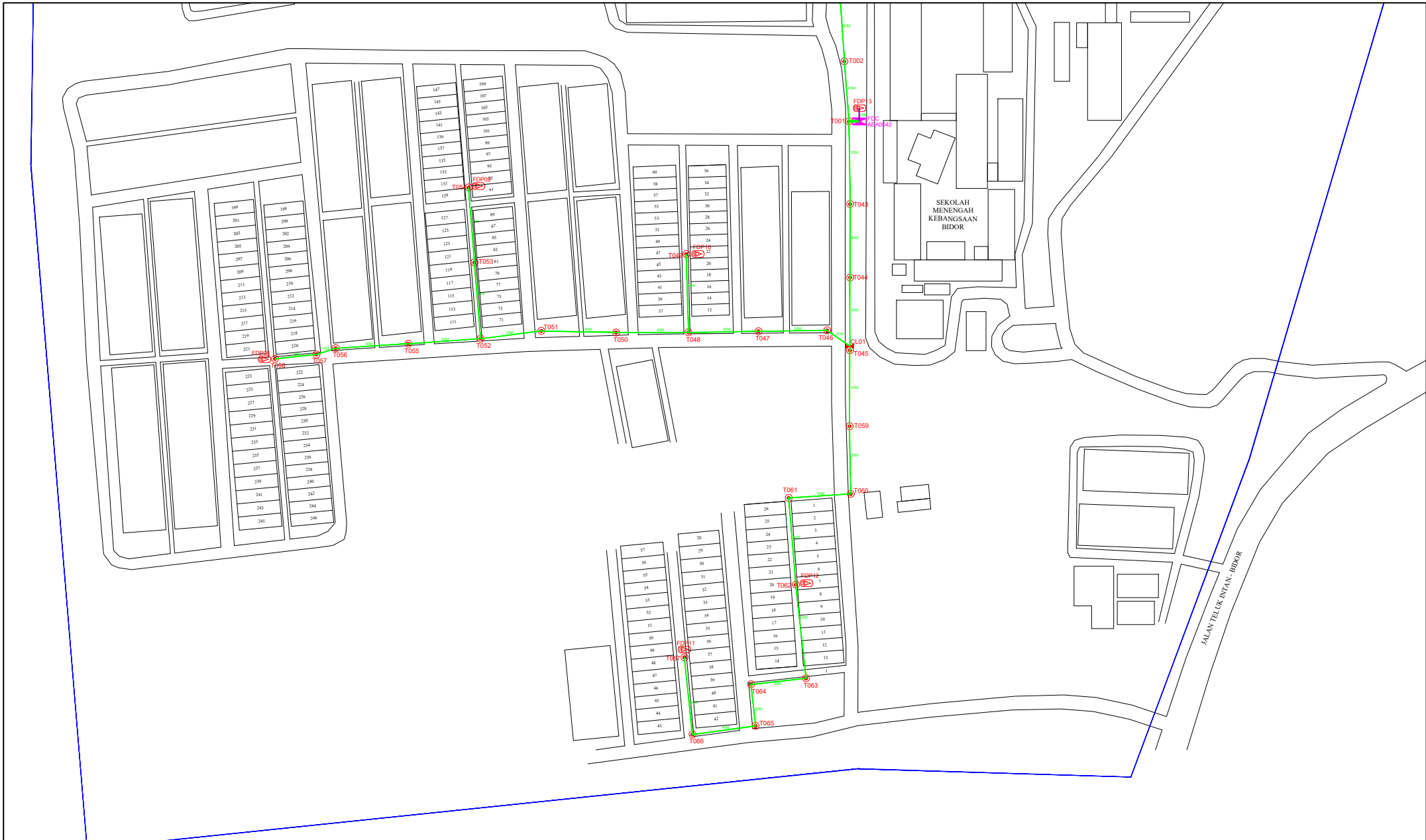
OWNER/DEVELOPER :



MAIN CONTRACTOR :  
  
CONTRACTOR FOR SURVEY, TECHNICAL PROPOSAL AND WAYLEAVE, & PERMIT APPROVAL - POP2 PROJECT

PROJECT TITLE :  
  
DRAWING TITLE: CONSTRUCTION DRAWING AEA0042 SEKOLAH MENENGAH KEBANGSAAN BIDOR  
  
PROJECT PHASE: POP 2

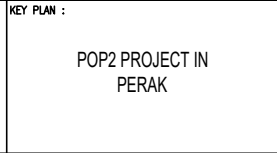
Design By :	Date : 12/12/2024
Drawn By :	Scale : NOT TO SCALE
Checked By :	Job Number : 1
DRAWING NUMBER : AEA0042-CD-01	Sheet : 1/4
THIS PRINT AND ITS COPYRIGHT ARE THE PROPERTY OF APEX COMMUNICATIONS SDN BHD	
Size : A3	



LEGEND	NOS.	NOS.	NOS.	NOS.	NOS.	NOS.	NOS.	NOS.	NOS.	NOS.
12C FOC	Installed 1:4 / 1:8 / 1:32 splitter	Installed Pole (9m)	Suspension	New Manhole (PIT)	Micro-Trenching (Meter)	MH1	MH NO.			
24C FOC	Installed Patch Cord	Installed Pole (7.5M)	Tension	New Manhole(JRC7)	Temporary Infra (Meter)	TKS-1	Existing TNB Pole NO.			
48C FOC	FDC	Installed Pole (6.7M)	Pole Ring	FDP Boundary	Loop / Coil (Meter)	P001	New Pole NO.			
96C FOC	Closure	Existing TNB Pole	FDP with (1:8) splitter	HDD (Meter)	Active Outdoor Cabinet	CL01	Closure NO.			
144C FOC	Existing Closure	Installed Riser	Existing Manhole	Open Cut (Meter)	FDC NO.	DP1	FDP NO.			

ACTUAL HOMEPASS :

KEY PLAN :  
POP2 PROJECT IN PERAK

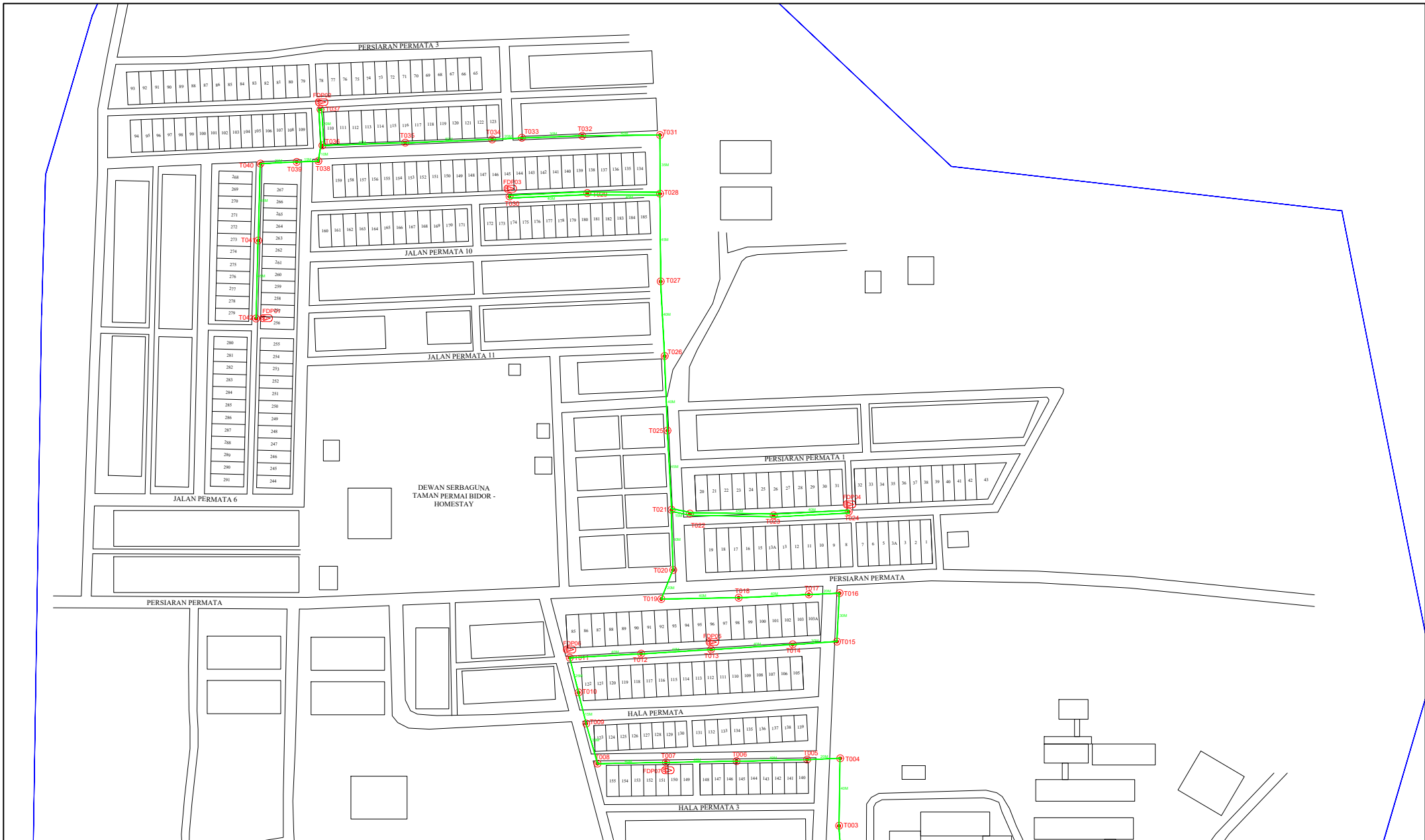


OWNER/DEVELOPER :  
MAIN CONTRACTOR :

PROJECT TITLE :  
CONTRACTOR FOR SURVEY, TECHNICAL PROPOSAL AND WAYLEAVE, & PERMIT APPROVAL - POP2 PROJECT

DRAWING TITLE:  
CONSTRUCTION DRAWING  
AEA0042  
SEKOLAH MENENGAH KEBANGSAAN BIDOR  
PROJECT PHASE:  
POP 2

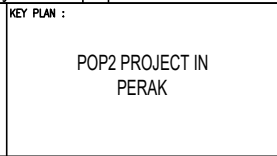
Design By :	Date : 12/12/2024
Drawn By :	Scale : NOT TO SCALE
Checked By :	Job Number : 1
DRAWING NUMBER : AEA0042-CD-02	Sheet : 2/4
THIS PRINT AND ITS COPYRIGHT ARE THE PROPERTY OF APEX COMMUNICATIONS SDN BHD	
Size : A3	



LEGEND	NOS.	NOS.	NOS.	NOS.	NOS.	NOS.	NOS.	NOS.	NOS.	NOS.
12C FOC	1	Installed 1:4 / 1:8 / 1:32 splitter	1	Installed Pole (9m)	66	Suspension	66	New Manhole (PIT)	66	Micro-Trenching (Meter)
24C FOC	268	Installed Patch Cord	1	Installed Pole (7.5M)	66	Tension	66	New Manhole(JRC7)	66	Temporary Infra (Meter)
48C FOC	1	FDC	1	Installed Pole (6.7M)	13	Pole Ring	13	FDP Boundary	13	Loop / Coil (Meter)
96C FOC	1	Closure	1	Existing TNB Pole	13	FDP with (1:8) splitter	13	HDD (Meter)	13	Active Outdoor Cabinet
144C FOC	1	Existing Closure	1	Installed Riser	13	Existing Manhole	13	Open Cut (Meter)	13	FDC NO.

ACTUAL HOMEPASS :

KEY PLAN :  
POP2 PROJECT IN PERAK

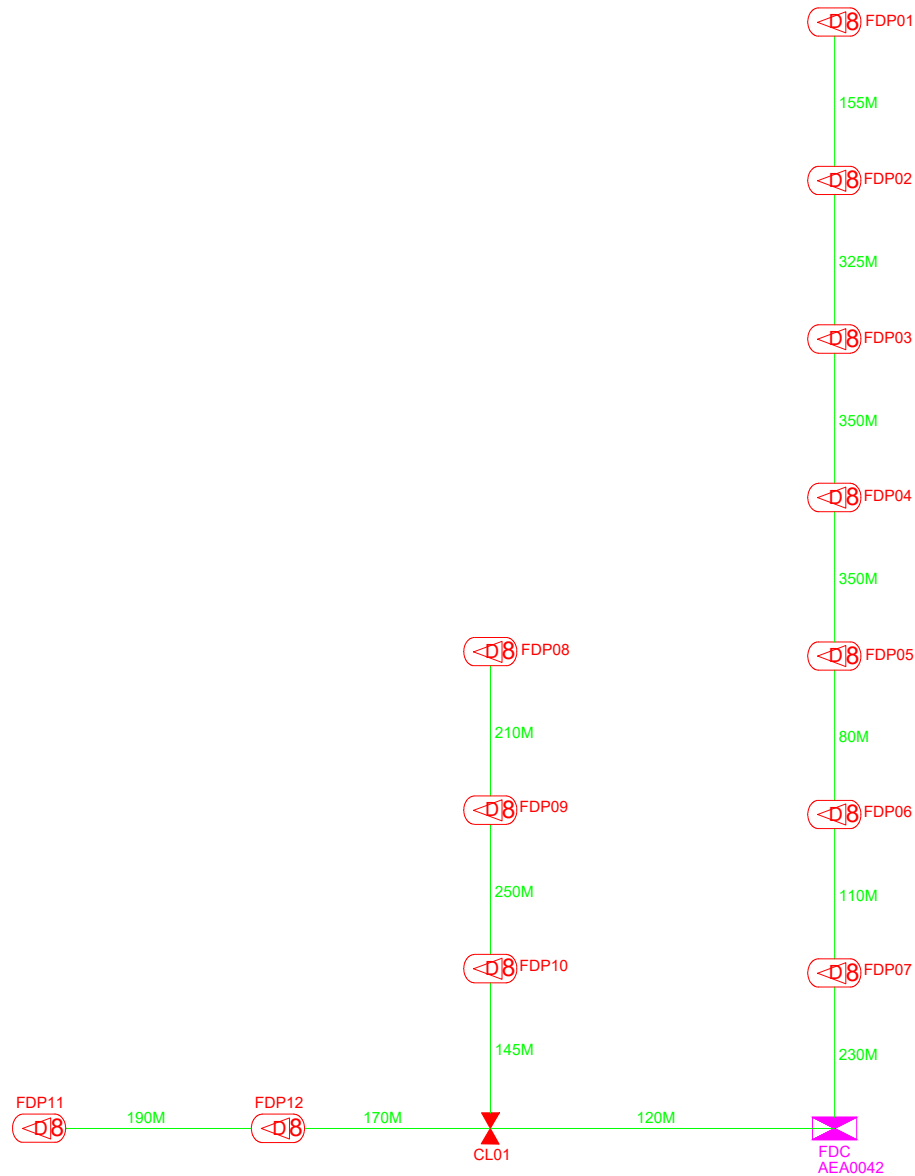


OWNER/DEVELOPER :  
MAIN CONTRACTOR :

PROJECT TITLE :  
CONTRACTOR FOR SURVEY, TECHNICAL PROPOSAL AND WAYLEAVE, & PERMIT APPROVAL - POP2 PROJECT

DRAWING TITLE:  
CONSTRUCTION DRAWING  
AEA0042  
SEKOLAH MENENGAH KEBANGSAAN BIDOR  
PROJECT PHASE:  
POP 2

Design By :	Date : 12/12/2024
Drawn By :	Scale : NOT TO SCALE
Checked By :	Job Number : 1
DRAWING NUMBER : AEA0042-CD-03	Sheet : 3/4
THIS PRINT AND ITS COPYRIGHT ARE THE PROPERTY OF APEX COMMUNICATIONS SDN BHD	
Size : A3	



LEGEND	NOS.	NOS.	NOS.	NOS.	NOS.	NOS.	NOS.	NOS.	NOS.	NOS.
12C FOC	Installed 1:4 / 1:8 / 1:32 splitter	Installed Pole (9m)	Suspension	New Manhole (PIT)	Micro-Trenching (Meter)	MHI	MH NO.			
24C FOC	Installed Patch Cord	Installed Pole (7.5M)	Tension	New Manhole(JRC7)	Temporary Infra (Meter)	TKS-1	Existing TNB Pole NO.			
48C FOC	FDC	Installed Pole (6.7M)	Pole Ring	FDP Boundary	Loop / Coil (Meter)	P001	New Pole NO.			
96C FOC	Closure	Existing TNB Pole	FDP with (1:8) splitter	HDD (Meter)	#	CL01	Closure NO.			
144C FOC	Existing Closure	Installed Riser	Existing Manhole	Open Cut (Meter)	001	DP1	FDP NO.			

ACTUAL HOMEPASS :

KEY PLAN :  
POP2 PROJECT IN PERAK

OWNER/DEVELOPER :



MAIN CONTRACTOR :  
CONTRACTOR FOR SURVEY, TECHNICAL PROPOSAL AND WAYLEAVE, & PERMIT APPROVAL - POP2 PROJECT

PROJECT TITLE :  
DRAWING TITLE: SLD DRAWING AEA0042 SEKOLAH MENENGAH KEBANGSAAN BIDOR  
PROJECT PHASE: POP 2

Design By :	Date : 12/12/2024
Drawn By :	Scale : NOT TO SCALE
Checked By :	Job Number : 1
DRAWING NUMBER : AEA0042-CD-04	Sheet : 4/4
THIS PRINT AND ITS COPYRIGHT ARE THE PROPERTY OF APEX COMMUNICATIONS SDN BHD	
Size : A3	