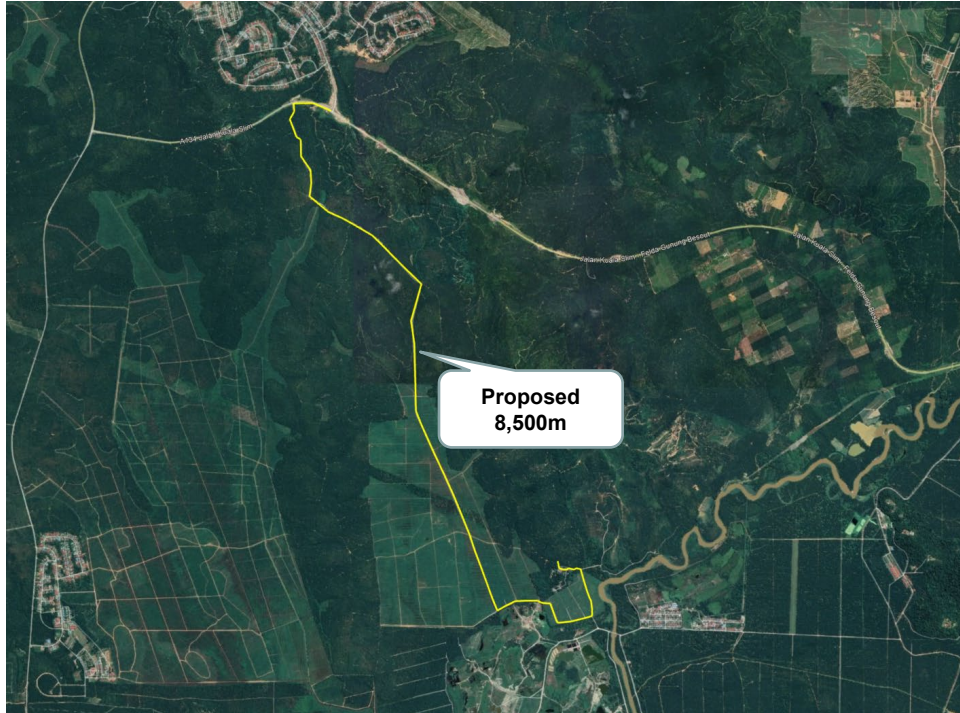
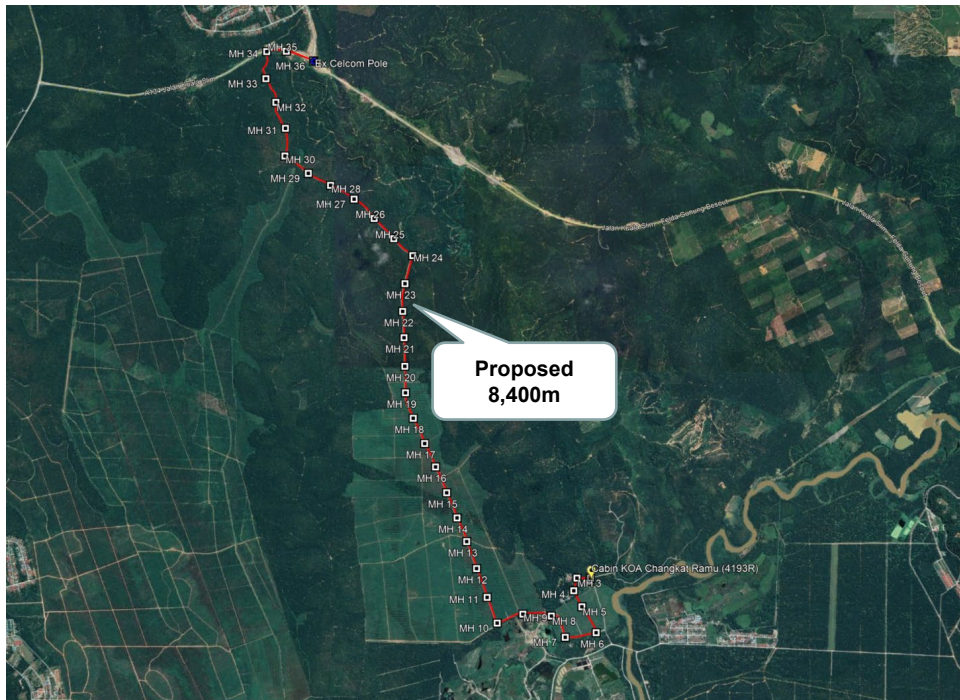


Section 3 : OSP Routing Plan



Planner KMZ



Proposed KMZ

Remarks: Proposed KMZ is different than planner proposed route due to different route to cabin area as per surveyed on site



MUSTIKA TERATAI SDN BHD
No.27-01, Jalan Harmoni 3/8
Taman Desa Harmoni, 81100 Johor Bahru,
Johor Darul Takzim
Tel : 07 - 3576715
Email : mtsbjb@yahoo.com



LET'S
INSPIRE

DIGI TELECOMMUNICATION SDN BHD
LOT 10, JALAN DELIMA 1/1,
SUBANG HI-TECH INDUSTRIAL PARK,
40000 SHAH ALAM, SELANGOR

Section 3 : OSP Routing Plan

PROPOSED MANHOLE/POLE COORDINATE		
MANHOLE/POLE NUMBER	LATITUDE	LONGTITUDE
MH 1	3.787164°	101.323380°
MH 2	3.787443°	101.323424°
MH 3	3.787440°	101.322304°
MH 4	3.786396°	101.322041°
MH 5	3.785072°	101.322712°
MH 6	3.782929°	101.323893°
MH 7	3.782547°	101.321335°
MH 8	3.784305°	101.320189°
MH 9	3.784461°	101.317825°
MH 10	3.783721°	101.315695°
MH 11	3.785848°	101.314863°
MH 12	3.788232°	101.313987°
MH 13	3.790464°	101.313169°
MH 14	3.792419°	101.312371°
MH 15	3.794497°	101.311510°
MH 16	3.796634°	101.310591°
MH 17	3.798570°	101.309688°
MH 18	3.800659°	101.308739°
MH 19	3.802765°	101.308098°
MH 20	3.804954°	101.308041°
MH 21	3.807320°	101.307978°
MH 22	3.809494°	101.307866°
MH 23	3.811787°	101.308056°
MH 24	3.814105°	101.308706°
MH 25	3.815506°	101.307131°

