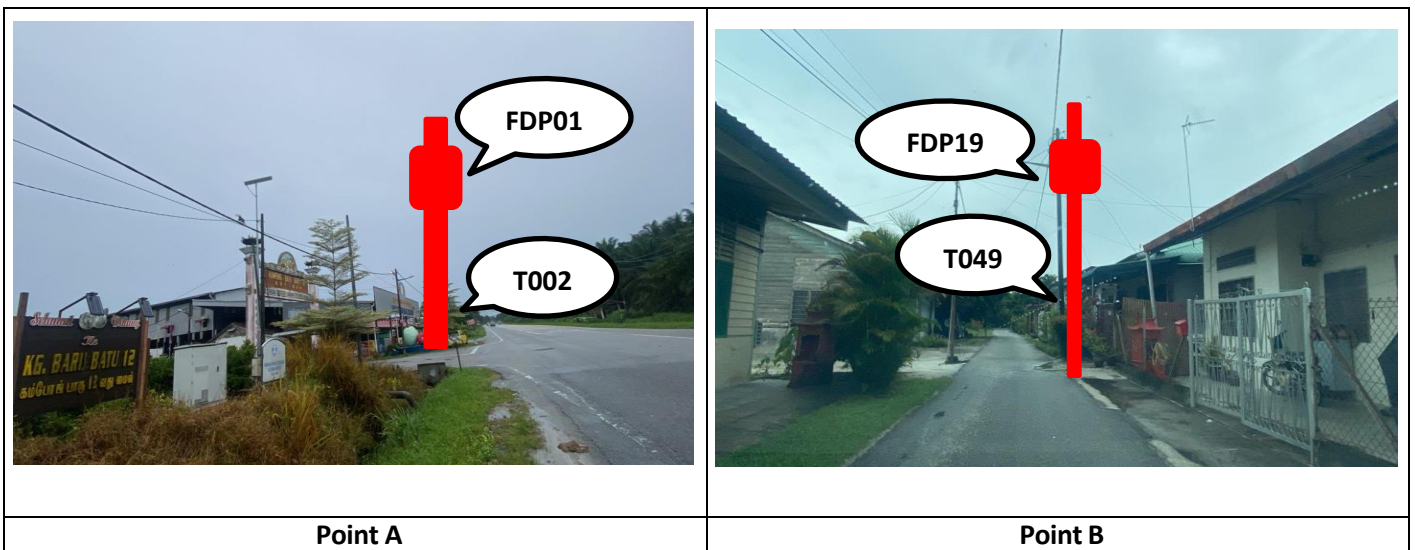


TECHNICAL PROPOSAL

POP2 ABC5083 SEKOLAH JENIS KEBANGSAAN (CINA) BATU DUABELAS (D-SIDE)

Company Name : KNZ ENGINEERING SDN BHD
Company Address : NO 60 & 60 A JALAN KLEBANG INDAH 1 MEDAN KLEBANG INDAH 30010 IPOH PERAK
Prepared By : FARHAH AFIQAH BINTI AMDON
Date : 24/12/2024



Starting Point

Site / Boundary Name : Teluk Intan
Address : SJK(C) Batu Dua Belas, Jalan Teluk Intan-Bidor, Kampung Batu 12, 36020, Teluk Intan, Perak
District : Teluk Intan
Postcode : 36020
State : Perak
GPS Coordinate : 4.00315875683933, 101.175211806799
LRD : A

End Point

Site / Boundary Name : Teluk Intan
Address : Kampung Batu 12, 36020 Teluk Intan, Perak
District : Teluk Intan
Postcode : 36020
State : Perak
GPS Coordinate : 4.00485545480142, 101.173087092237
LRD : B



PROJEK PENYEDIAAN DAN PENYELENGGARAAN POINT OF PRESENCE (POP) FASA 2: HAB INFRASTRUKTUR GENTIAN OPTIK BERHAMPIRAN DENGAN SEKOLAH, KAWASAN PERINDUSTRIAN, PREMIS KERAJAAN DAN KOMUNITI SEKITARNYA OLEH KEMENTERIAN KOMUNIKASI MALAYSIA – ZON UTARA (KKMM.400-11/17/132(1))



1.0 WORK SUMMARY

NO	PROPOSED DISTANCE AND METHOD	UNIT	QUANTITY
1	Horizontal Directional Drilling (HDD)	m	0
2	Carriage Way Open Trench (CW)	m	0
3	Grass Verge Open Trenching (GV)	m	0
4	Micro Trenching (MT)	m	0
Total			0

NO	OTHER INFORMATION	UNIT	QUANTITY
1	Installation of Short Span ADSS Fibre Cables	m	3,390m
2	Install New Pole	ea	49
3	Install New JRC7 Manhole	ea	0
4	Install GI Riser 100mm	ea	0
5	Install Fiber Distribution Point	ea	19
6	Install Closure	ea	5
7	Estimated Time Required for Completion	days	30

2.0 LOCAL AUTHORITY SUMMARY

Daerah Teluk Intan

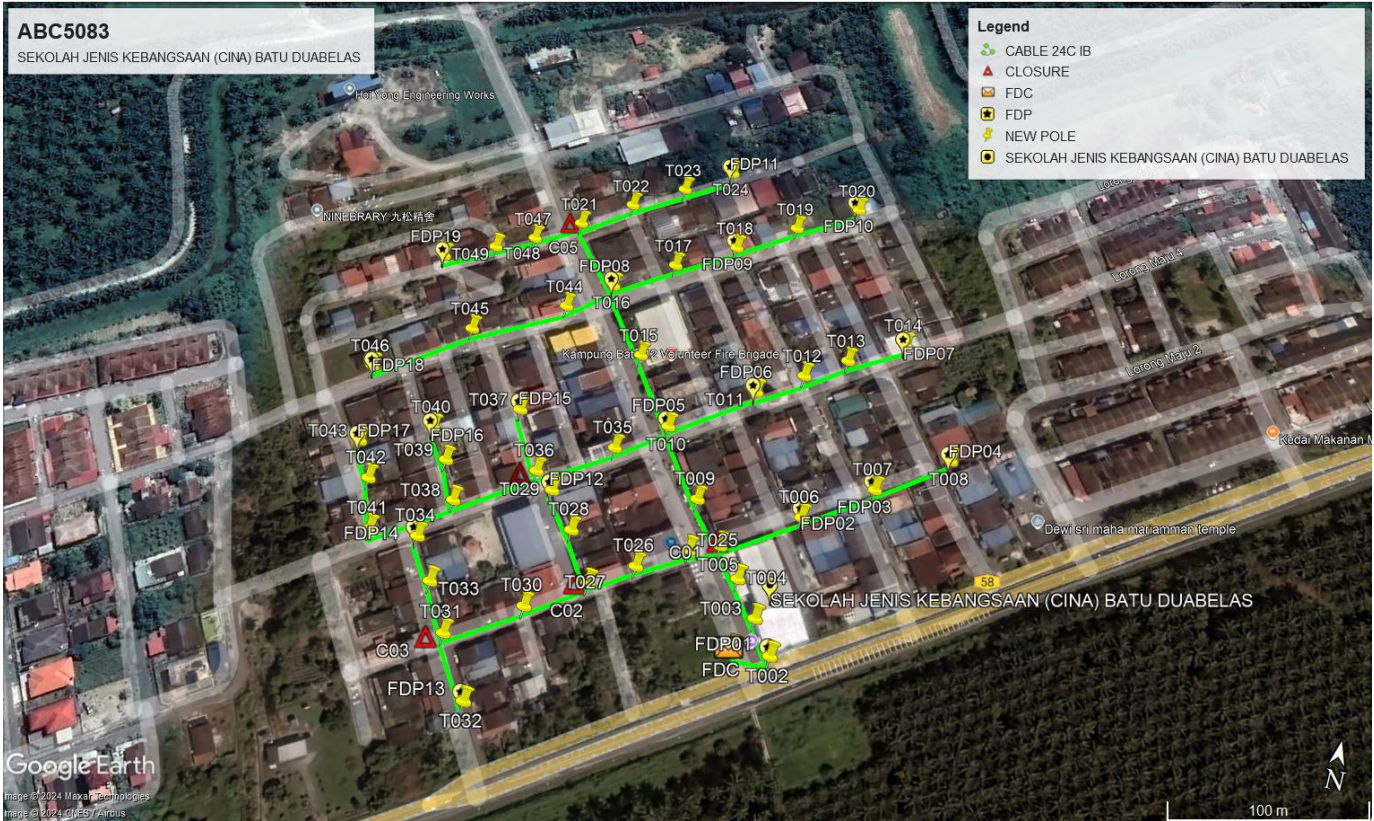
Bil	Items	Owner	Quantity	Distance
1	HDD	JKR	-	-
		Majlis	-	-
		Estate / Private Land	-	-
2	New Pole	JKR	-	-
		Majlis	49	2,400m
		Estate / Private Land	-	-
3	Existing TNB Pole	JKR	-	-
		Majlis	-	-
		Estate / Private Land	-	-
Total				2,400m

Site Plan – KMZ (Overview site area)

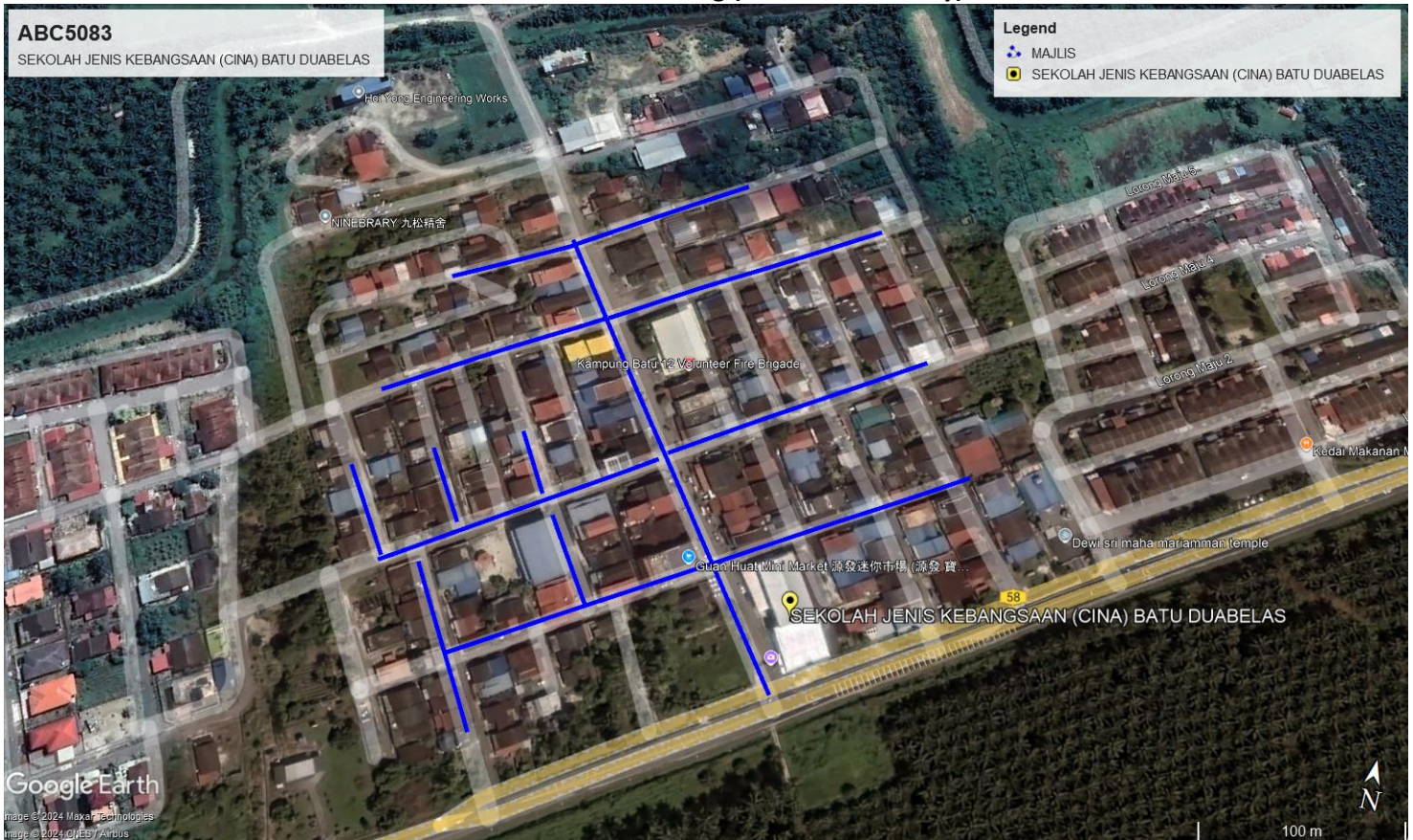
Proposed FDP and Closure



Proposed New Pole

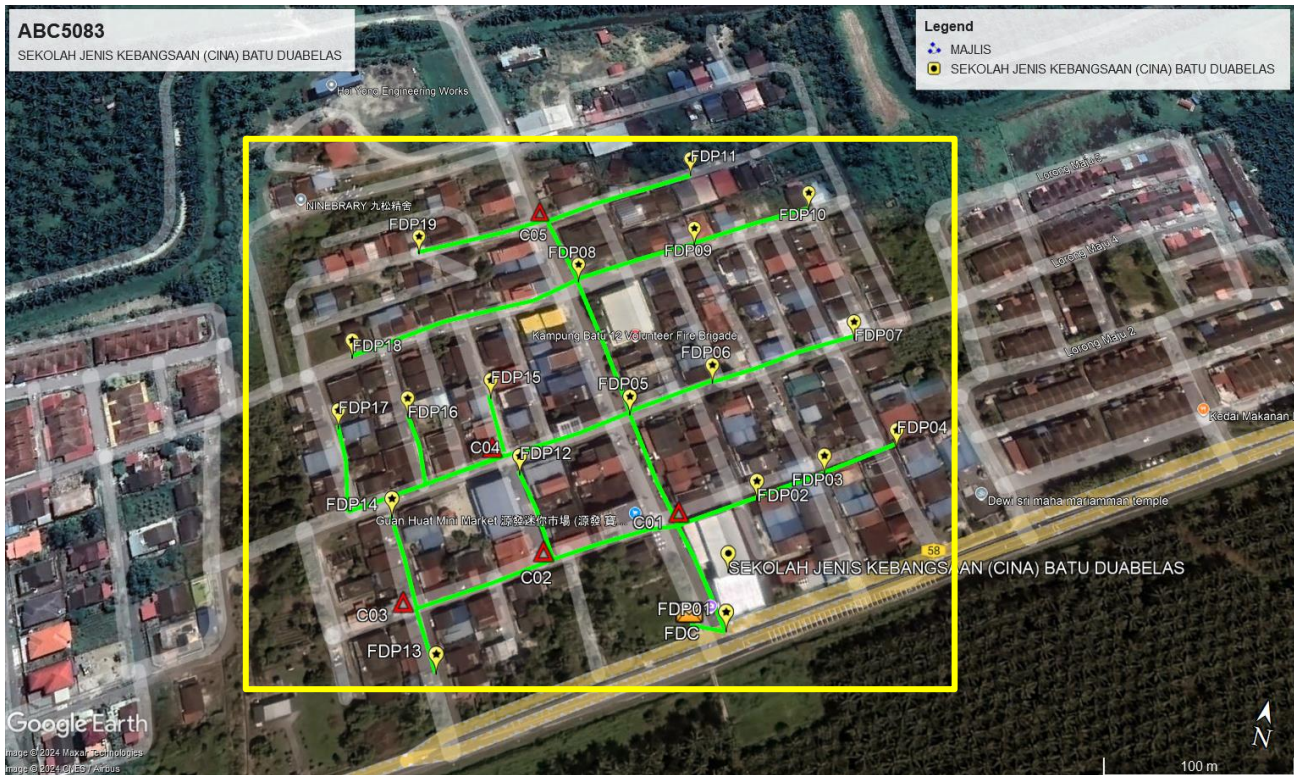


Site Plan – KMZ Routing (All Local Authority)



Majlis Road – Blue Colour

Route 1



Route 1.1

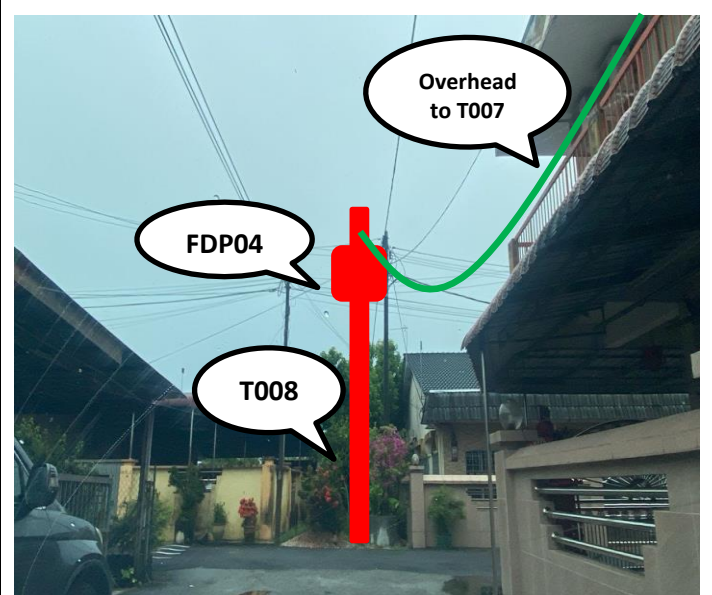
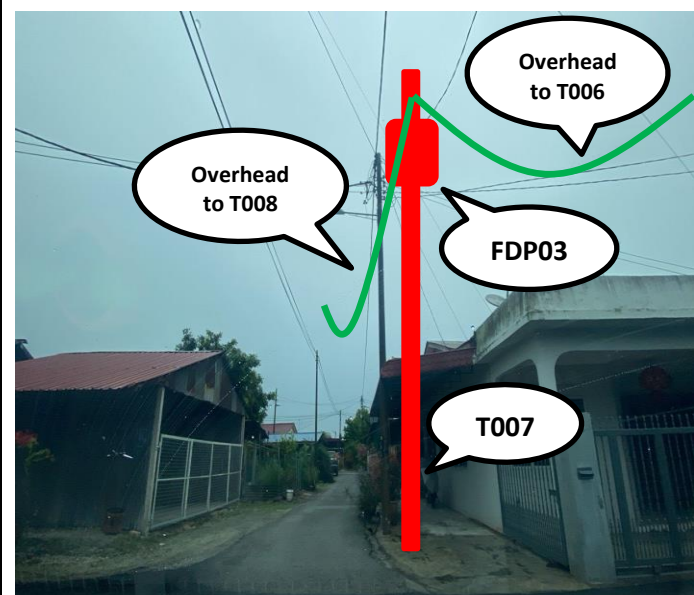
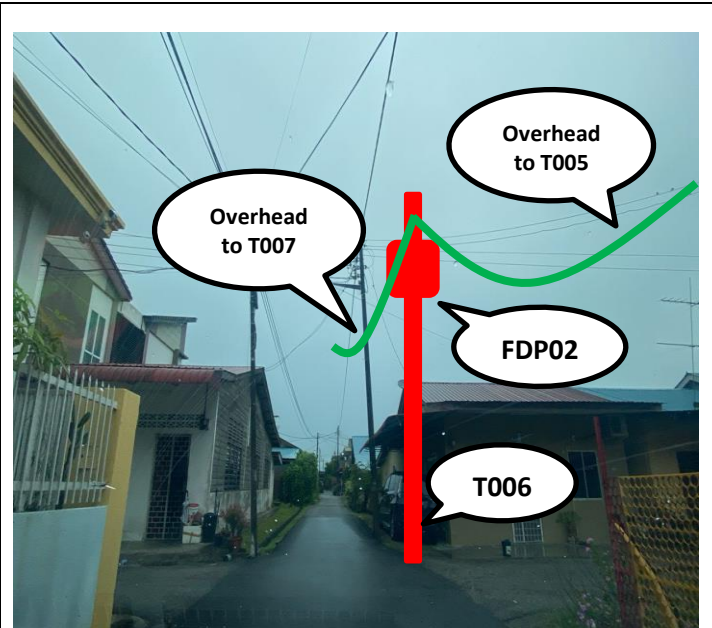
3.0 PROPOSED NEW POLE

Proposed New Pole Coordinate					
No.	Pole Number	Distance (m)	Latitude	Longitude	Local Authority
1	T001	40	4.0031531590999	101.17503360796	Majlis Perbandaran Teluk Intan
2	T002	40	4.00315875683933	101.175211806799	Majlis Perbandaran Teluk Intan
3	T003	40	4.00331901403855	101.175107190386	Majlis Perbandaran Teluk Intan
4	T004	40	4.00348920120502	101.174987634662	Majlis Perbandaran Teluk Intan
5	T005	50	4.00362942758556	101.174870909047	Majlis Perbandaran Teluk Intan
6	T006	50	4.00385829146691	101.175228767031	Majlis Perbandaran Teluk Intan
7	T007	40	4.00408551738513	101.175558567049	Majlis Perbandaran Teluk Intan
8	T008	40	4.00432096528827	101.175906530844	Majlis Perbandaran Teluk Intan
9	T009	50	4.00383338966963	101.174709678446	Majlis Perbandaran Teluk Intan
10	T010	50	4.00417355777225	101.174482504916	Majlis Perbandaran Teluk Intan
11	T011	50	4.00445395791026	101.17487803655	Majlis Perbandaran Teluk Intan
12	T012	40	4.00459950062996	101.175100186308	Majlis Perbandaran Teluk Intan
13	T013	40	4.00473588888723	101.175305283065	Majlis Perbandaran Teluk Intan
14	T014	40	4.00489176811507	101.175580928871	Majlis Perbandaran Teluk Intan
15	T015	50	4.00453229791154	101.174249941361	Majlis Perbandaran Teluk Intan
16	T016	50	4.00489150045888	101.174011955563	Majlis Perbandaran Teluk Intan
17	T017	40	4.00507686880466	101.174308159208	Majlis Perbandaran Teluk Intan
18	T018	40	4.00525593259177	101.174605254833	Majlis Perbandaran Teluk Intan
19	T019	40	4.00544549921833	101.174898055005	Majlis Perbandaran Teluk Intan
20	T020	40	4.00563097368446	101.175205709921	Majlis Perbandaran Teluk Intan
21	T021	40	4.00521268098828	101.17375218804	Majlis Perbandaran Teluk Intan
22	T022	40	4.00538637249611	101.17399752676	Majlis Perbandaran Teluk Intan
23	T023	40	4.00554725504356	101.17425214808	Majlis Perbandaran Teluk Intan
24	T024	40	4.00571136050024	101.174485201796	Majlis Perbandaran Teluk Intan
25	T025	40	4.00357514338134	101.17472666584	Majlis Perbandaran Teluk Intan
26	T026	40	4.00343981144133	101.174493489405	Majlis Perbandaran Teluk Intan
27	T027	40	4.00330635643744	101.174288655922	Majlis Perbandaran Teluk Intan

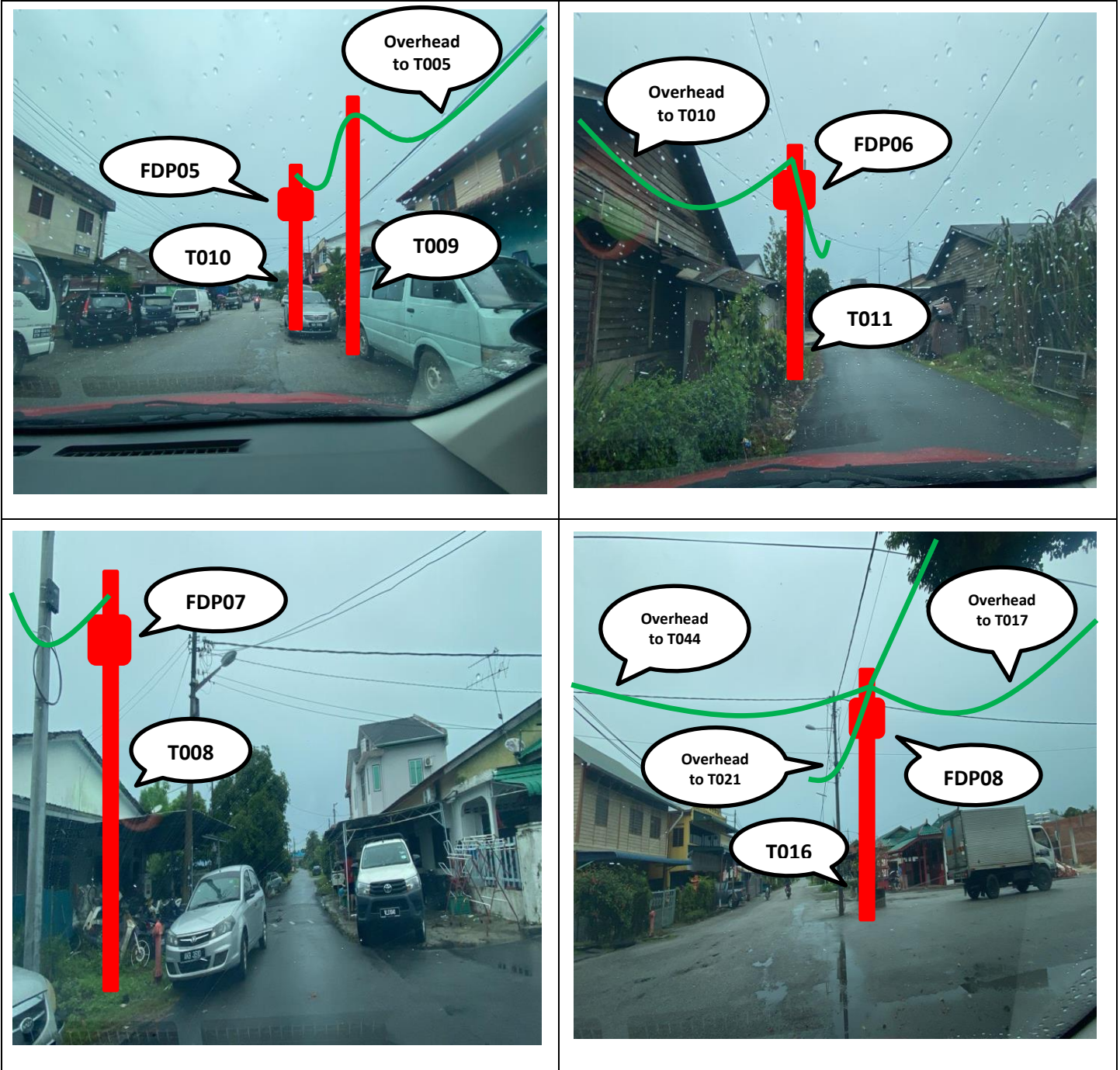
4.0 PROPOSED NEW POLE

Proposed New Pole Coordinate					
No.	Pole Number	Distance (m)	Latitude	Longitude	Local Authority
28	T028	40	4.00354389743383	101.174142376936	Majlis Perbandaran Teluk Intan
29	T029	40	4.00371981489492	101.173997099384	Majlis Perbandaran Teluk Intan
30	T030	40	4.00313151271485	101.174018756085	Majlis Perbandaran Teluk Intan
31	T031	40	4.00292440201435	101.173677731905	Majlis Perbandaran Teluk Intan
32	T032	40	4.00264263768472	101.173860737771	Majlis Perbandaran Teluk Intan
33	T033	40	4.0031474249743	101.173544953443	Majlis Perbandaran Teluk Intan
34	T034	40	4.00334638690601	101.173418951317	Majlis Perbandaran Teluk Intan
35	T035	50	4.00400583710765	101.174245180018	Majlis Perbandaran Teluk Intan
36	T036	50	4.00379957151972	101.173894497598	Majlis Perbandaran Teluk Intan
37	T037	40	4.00409965991157	101.173724316529	Majlis Perbandaran Teluk Intan
38	T038	40	4.00356121390677	101.173533843247	Majlis Perbandaran Teluk Intan
39	T039	40	4.00375586107865	101.173434633399	Majlis Perbandaran Teluk Intan
40	T040	40	4.00391001407168	101.173319572937	Majlis Perbandaran Teluk Intan
41	T041	40	4.00333078039601	101.173176825278	Majlis Perbandaran Teluk Intan
42	T042	40	4.0035813282362	101.173083036991	Majlis Perbandaran Teluk Intan
43	T043	40	4.00376137896569	101.172976952047	Majlis Perbandaran Teluk Intan
44	T044	40	4.00472000573607	101.173800439214	Majlis Perbandaran Teluk Intan
45	T045	50	4.00447666694185	101.173357272334	Majlis Perbandaran Teluk Intan
46	T046	50	4.0041628512101	101.172911309743	Majlis Perbandaran Teluk Intan
47	T047	40	4.00506821128279	101.173532216635	Majlis Perbandaran Teluk Intan
48	T048	40	4.00497063773384	101.173341507348	Majlis Perbandaran Teluk Intan
49	T049	40	4.00485545480142	101.173087092237	Majlis Perbandaran Teluk Intan

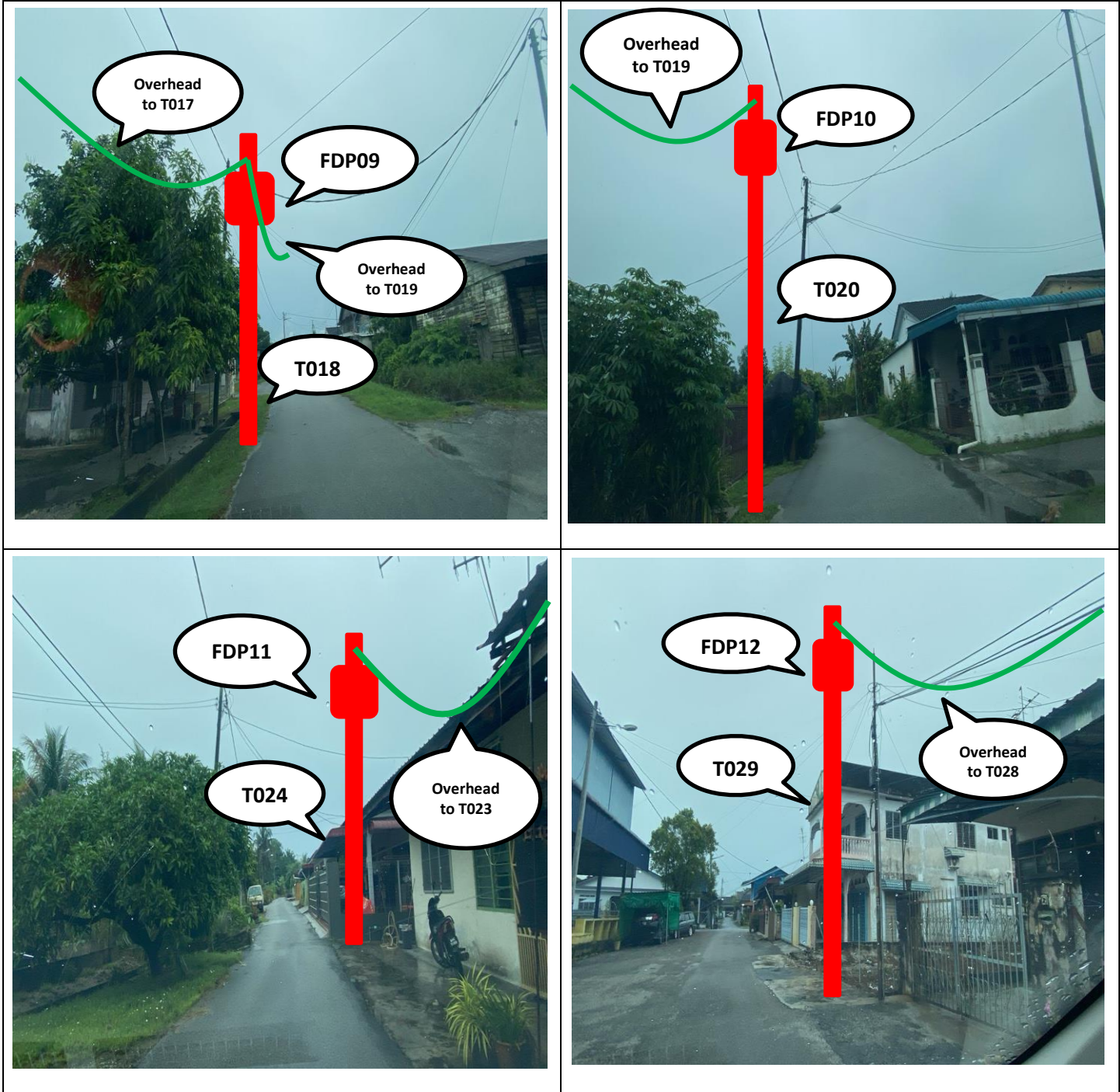
5.0 SITE PHOTOS - PROPOSED NEW POLE



5.0 SITE PHOTOS - PROPOSED NEW POLE



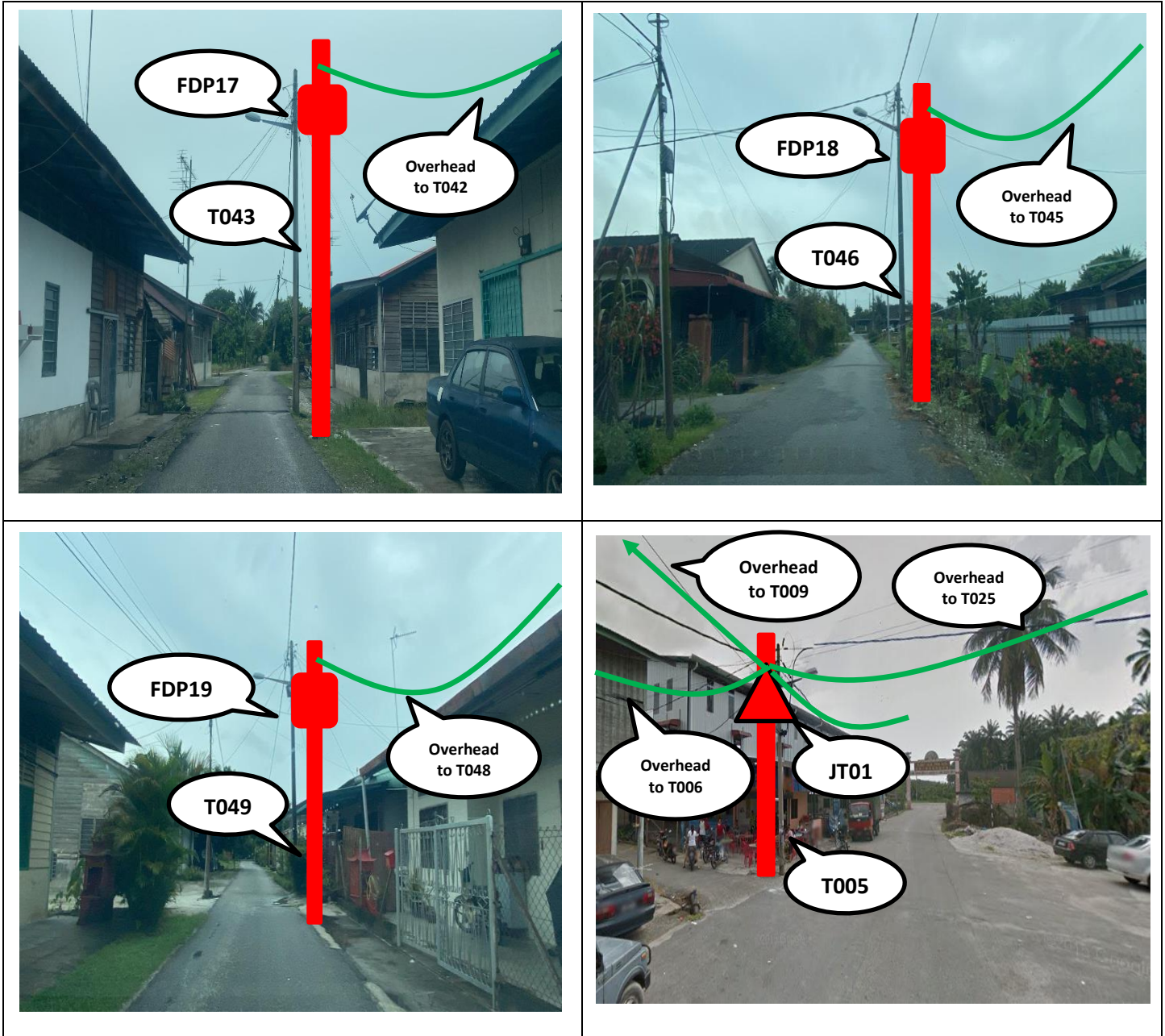
5.0 SITE PHOTOS - PROPOSED NEW POLE



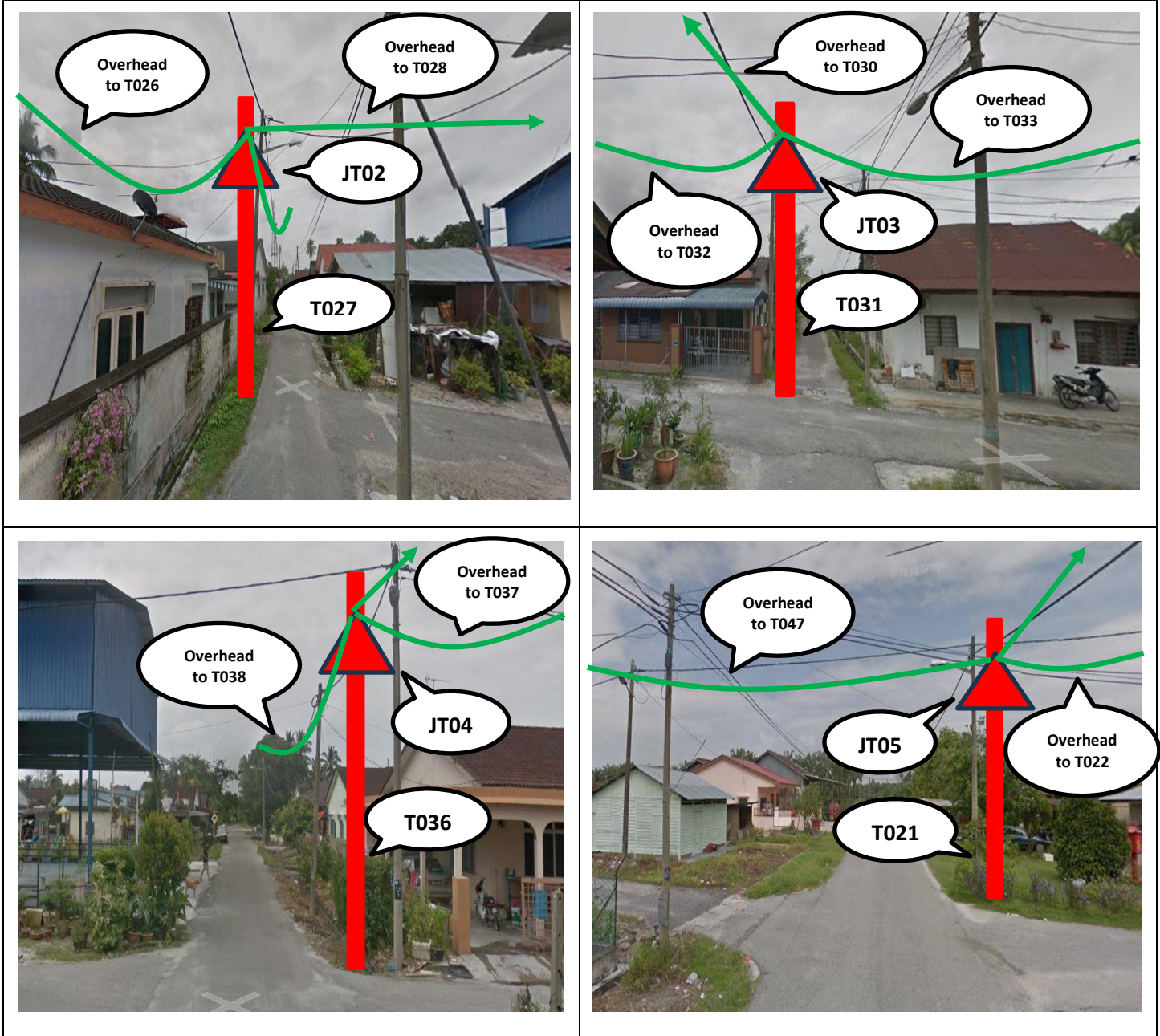
5.0 SITE PHOTOS - PROPOSED NEW POLE



5.0 SITE PHOTOS - PROPOSED NEW POLE



5.0 SITE PHOTOS - PROPOSED NEW POLE





PROJEK PENYEDIAAN DAN PENYELENGGARAAN POINT OF PRESENCE (POP) FASA 2: HAB INFRASTRUKTUR GENTIAN OPTIK BERHAMPIRAN DENGAN SEKOLAH, KAWASAN PERINDUSTRIAN, PREMIS KERAJAAN DAN KOMUNITI SEKITARNYA OLEH KEMENTERIAN KOMUNIKASI MALAYSIA – ZON UTARA (KKMM.400-11/17/132(1))



6.0 3rd PARTIES DEPENDENCIES

NO	LOCAL COUNCIL / AUTHORITY	REMARK
1	Majlis Perbandaran Teluk Intan	2,400m



LEGEND	
12C FOC	Installed 1:4 splitter in FDC
24C FOC	FDP
48C FOC	CLOSURE
90C FOC	NEW MANHOLE (PT)
144C FOC	INSTALLED POLE
INSTALLED POLE (9M)	NEW MANHOLE
INSTALLED RISER	HOUSE NUMBER
SUSPENSION BIG	EXISTING ALLO POLE
SUSPENSION SMALL	LOOP
FDC	FDP BOUNDARY
TENSION SMALL / TENSION BIG	EXISTING MANHOLE
CLOSURE NO.	CLOSURE NO.
FDP NO.	FDP NO.
FDC NO.	FDC NO.
MH NO.	MH NO.
EXISTING TNB POLE NO.	EXISTING TNB POLE NO.
NEW POLE NO.	NEW POLE NO.

KEY PLAN

PROJECT OWNER



MAIN CONTRACTOR




SUB-CONTRACTOR



KNZ ENGINEERING SDN BHD
 NO. 60 & 60A, Jalan Klebang Indah 1, Medan Klebang Indah, 30100 Ipoh, Perak
 No Tel: 019-3695071
 Email: admin@knzengineering.com.my
 Website: www.knzengineering.com.my

PROJECT TITLE

SEKOLAH JENIS KEBANGSAAN (CINA) BATU DUA BELAS

DRAWING TITLE

TP DRAWING POP 2 AT SEKOLAH JENIS KEBANGSAAN (CINA) BATU DUA BELAS

PROJECT PHASE

PROJECT PHASE 2

DESIGN BY	NABIL	DATE	19/12/2024
DRAWN BY	NABIL	SCALE	NOT TO SCALE
CHECKED BY	AZHAN HARIS	JOB NUMBER	ABC5083
DRAWING NUMBER		ABC5083	
THIS PRINT AND ITS COPYRIGHT ARE THE PROPERTY OF KNZ ENGINEERING SDN. BHD.		A3	