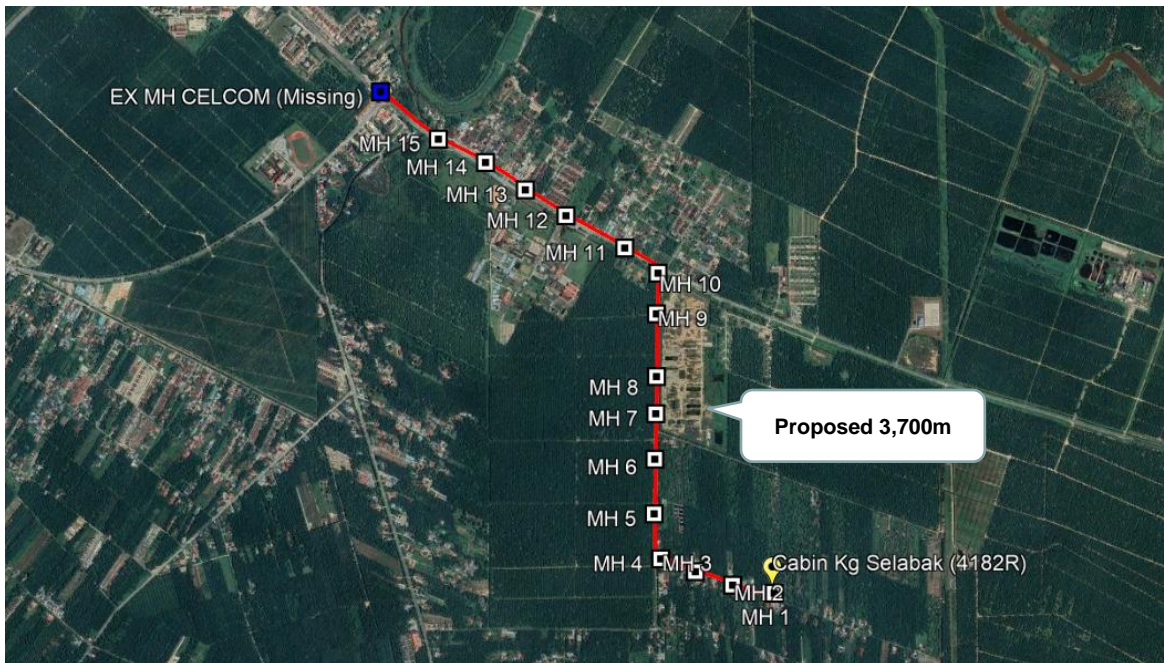


## Section 3 : OSP Routing Plan



Planner KMZ



Proposed KMZ

**Remarks: The proposed route is different with planner proposed route due to the location of tapping existing MH Celcom (Missing) and tower.**



## Section 3 : OSP Routing Plan

PROPOSED MANHOLE AND POLE COORDINATE		
MANHOLE/POLE NUMBER	LATITUDE	LONGTITUDE
Cabin Kg Selabak (4182R)	3.975973°	101.065171°
MH 1	3.975921°	101.065316°
MH 2	3.976276°	101.063470°
MH 3	3.976875°	101.061813°
MH 4	3.977442°	101.060275°
MH 5	3.979437°	101.059983°
MH 6	3.981858°	101.060013°
MH 7	3.983872°	101.060055°
MH 8	3.985519°	101.060086°
MH 9	3.988297°	101.060083°
MH 10	3.990099°	101.060157°
MH 11	3.991215°	101.058676°
MH 12	3.992644°	101.056066°
MH 13	3.993790°	101.054262°
MH 14	3.995003°	101.052492°
MH 15	3.996038°	101.050398°
EX MH CELCOM (Missing)	3.998133°	101.047829°