

TECHNICAL PROPOSAL

POP2 E-SIDE E5 PMU CEND to SK BENG (ABA7017), SK KG LUAT (ABA7016) & SK KG CHEPOR (ABA7013)

Company Name : GEMILANG UTUH CONSTRUCTION SDN BHD
 Company Address : 42-1A, BLOCK 8, JLN PAHAT H 15/H, KOMPLEKS OTOMOBIL PERSIARAN SELANGOR S15, 40200 SHAH ALAM SELANGOR
 Prepared By : Azura Azmi
 Date : 17th July 2024



POINT A

POINT B

Starting Point

Site / Boundary Name : Lenggong
 Address : Kg Hilir Bukit Sapi, Lenggong
 District : Lenggong
 Postcode : 33400
 State : Perak
 GPS Coordinate : 5° 7'37.56"N, 101° 1'51.44"E
 LRD : A

End Point

Site / Boundary Name : Lenggong
 Address : SK Beng, Kampung Beng, Lenggong
 District : Lenggong
 Postcode : 33400
 State : Perak
 GPS Coordinate : 5° 0'56.28"N, 100°58'55.74"E
 LRD : B

1.0 WORK SUMMARY

No	Proposed Distance and Method	Unit	Quantity
1	Horizontal Directional Drilling (HDD)	m	0
2	Carriage Way Open trench (CW)	m	0
3	Grass Verge Open Trenching (GV)	m	0
4	Micro trenching (MT)	m	0
	Total		0m

No	Other Information	Unit	Quantity
1	Proposed Manhole	EA	0
2	Proposed Pole	EA	184
3	Joint Closure	EA	10
4	Estimated time required for completion	days	90

2.0 LOCAL AUTHORITY SUMMARY

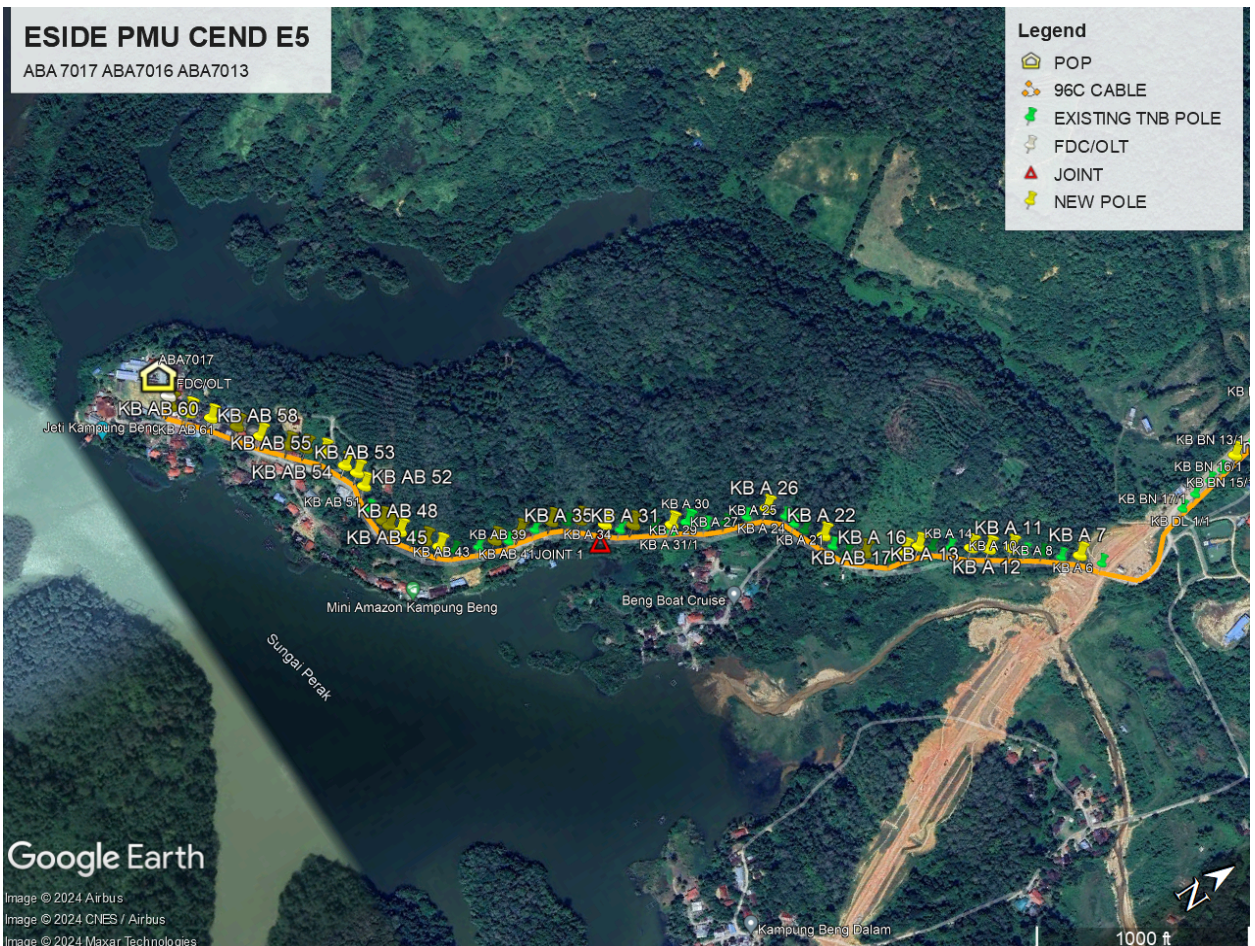
Daerah Lenggong

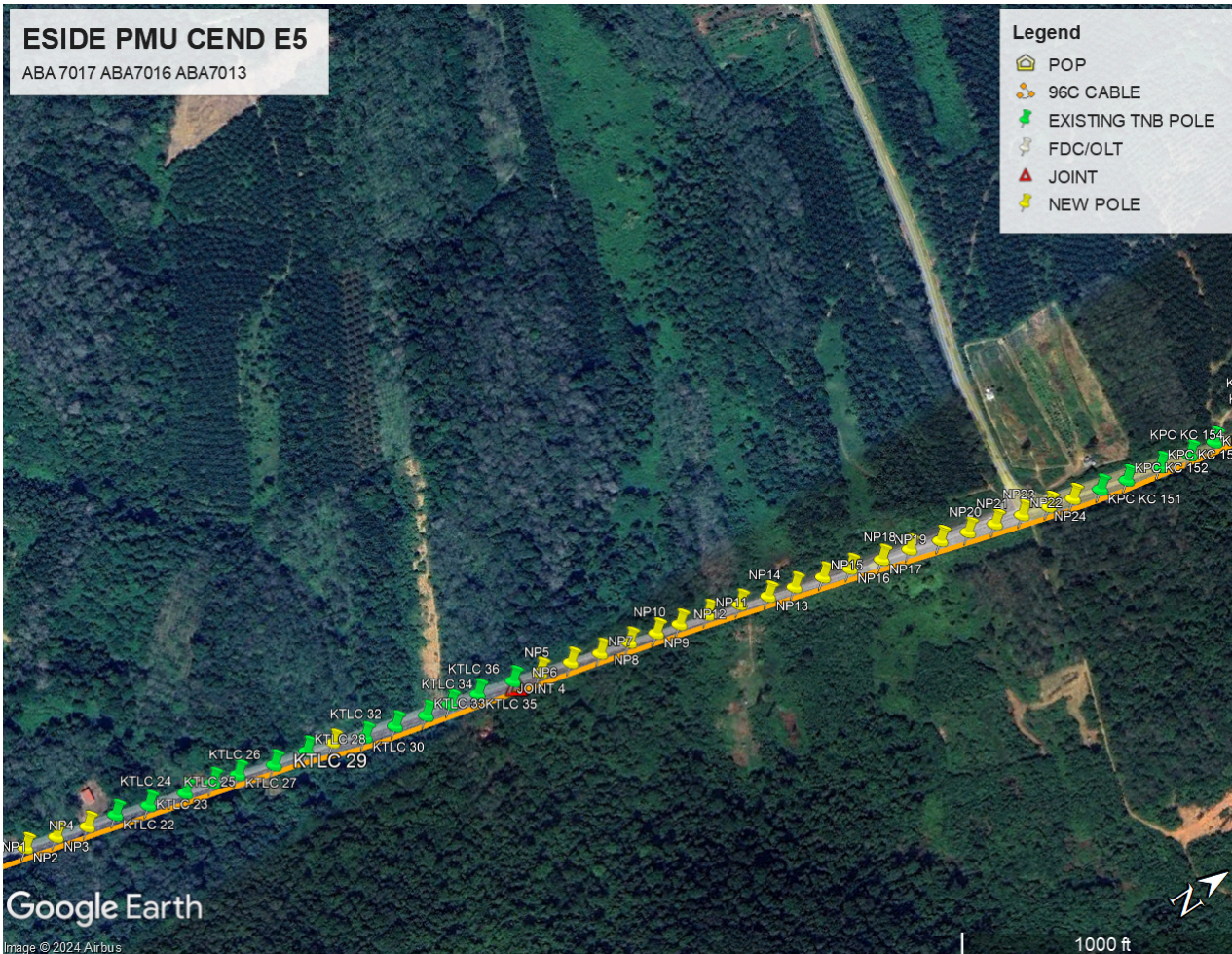
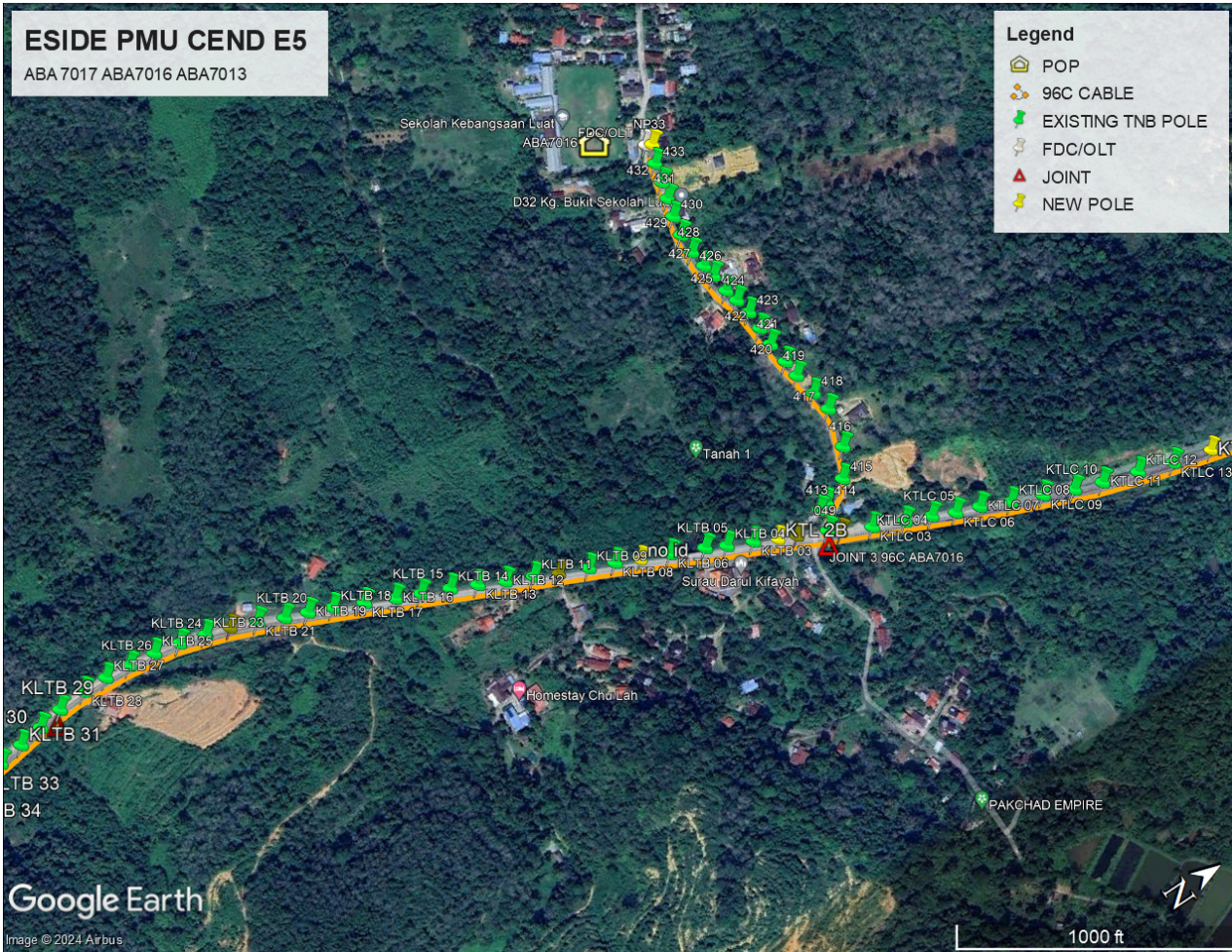
No	Items	Owner	Quantity	Distance (m)
1	HDD	JKR	-	-
		Majlis	-	-
		Estate / Private Land	-	-
2	New Pole	JKR	120pc	4200
		Majlis	64 pc	2240
		Estate / Private Land	-	-
3	Existing TNB Pole	JKR	491pc	12,275
		Majlis	-	-
		Estate / Private Land	-	-
Total Distance (m)				18,715

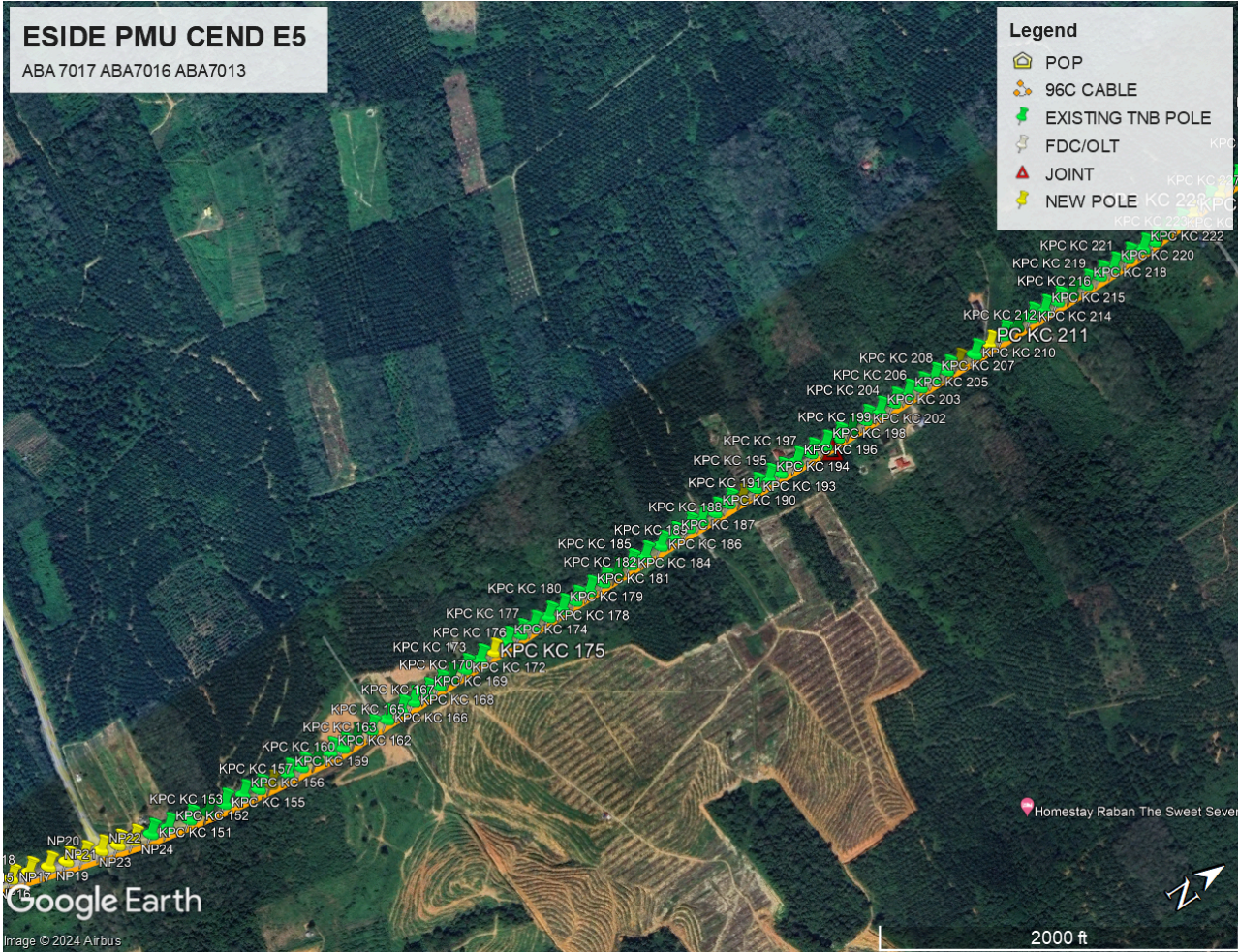
3.0 Site Plan – KMZ

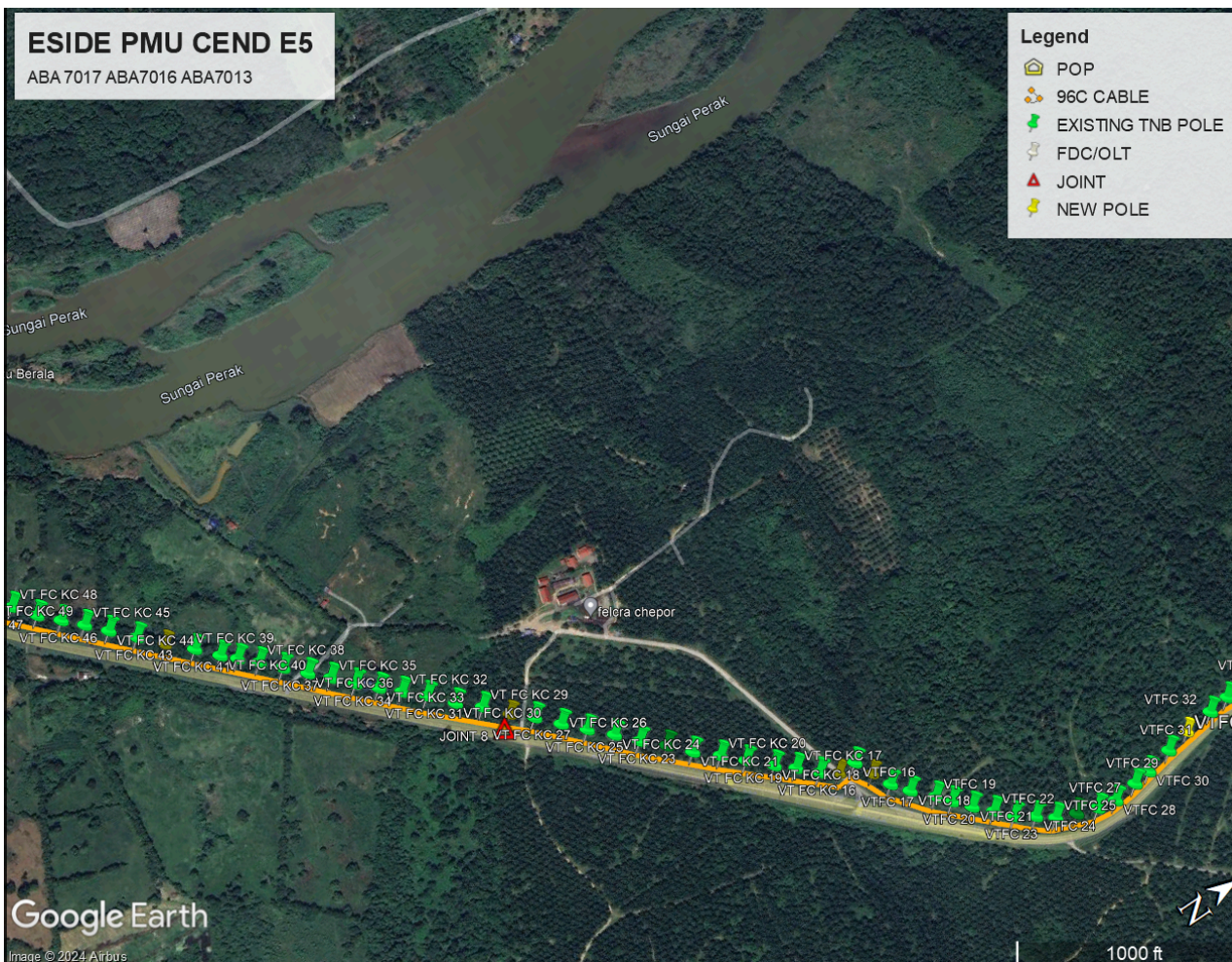
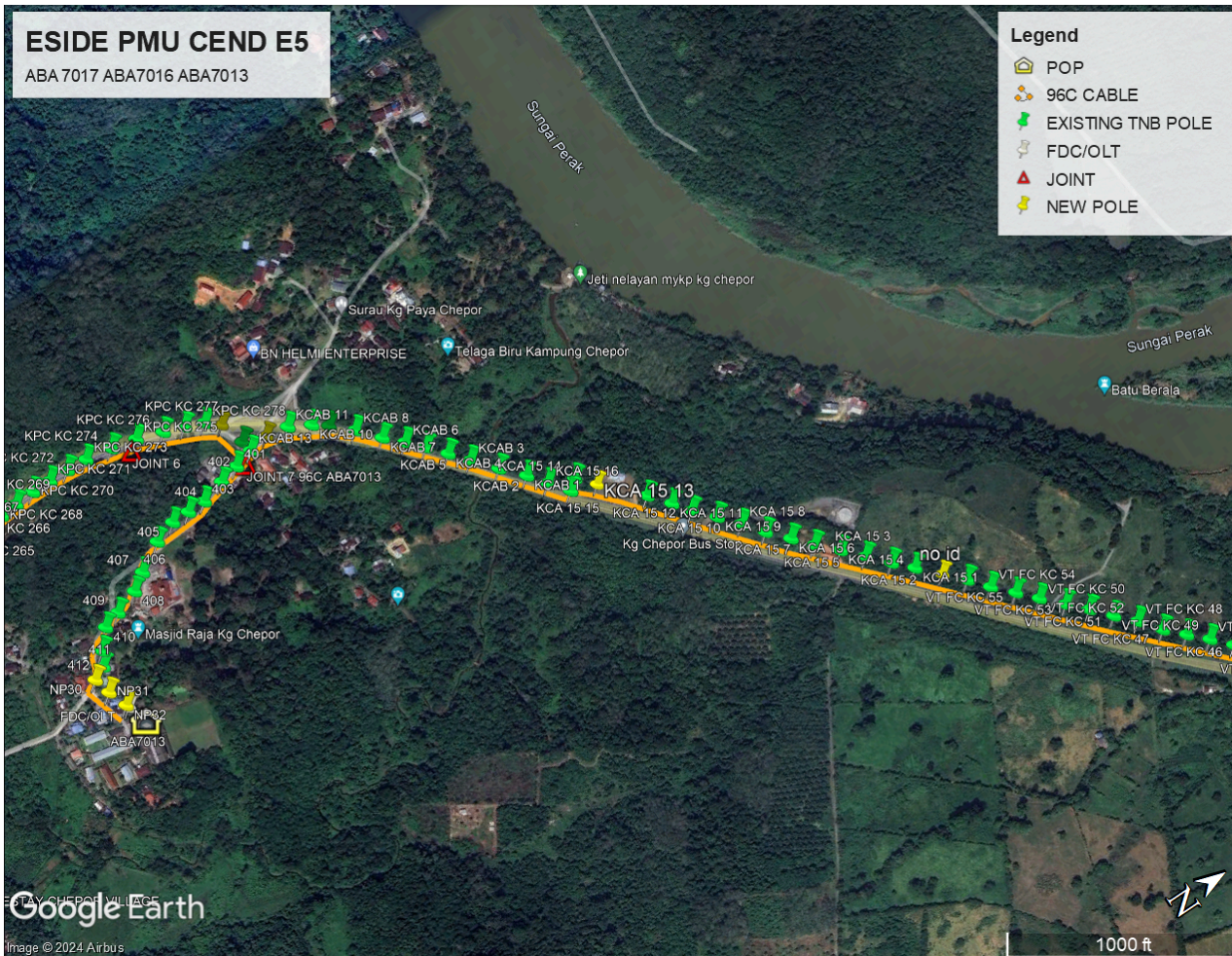
3.1 Overview site area

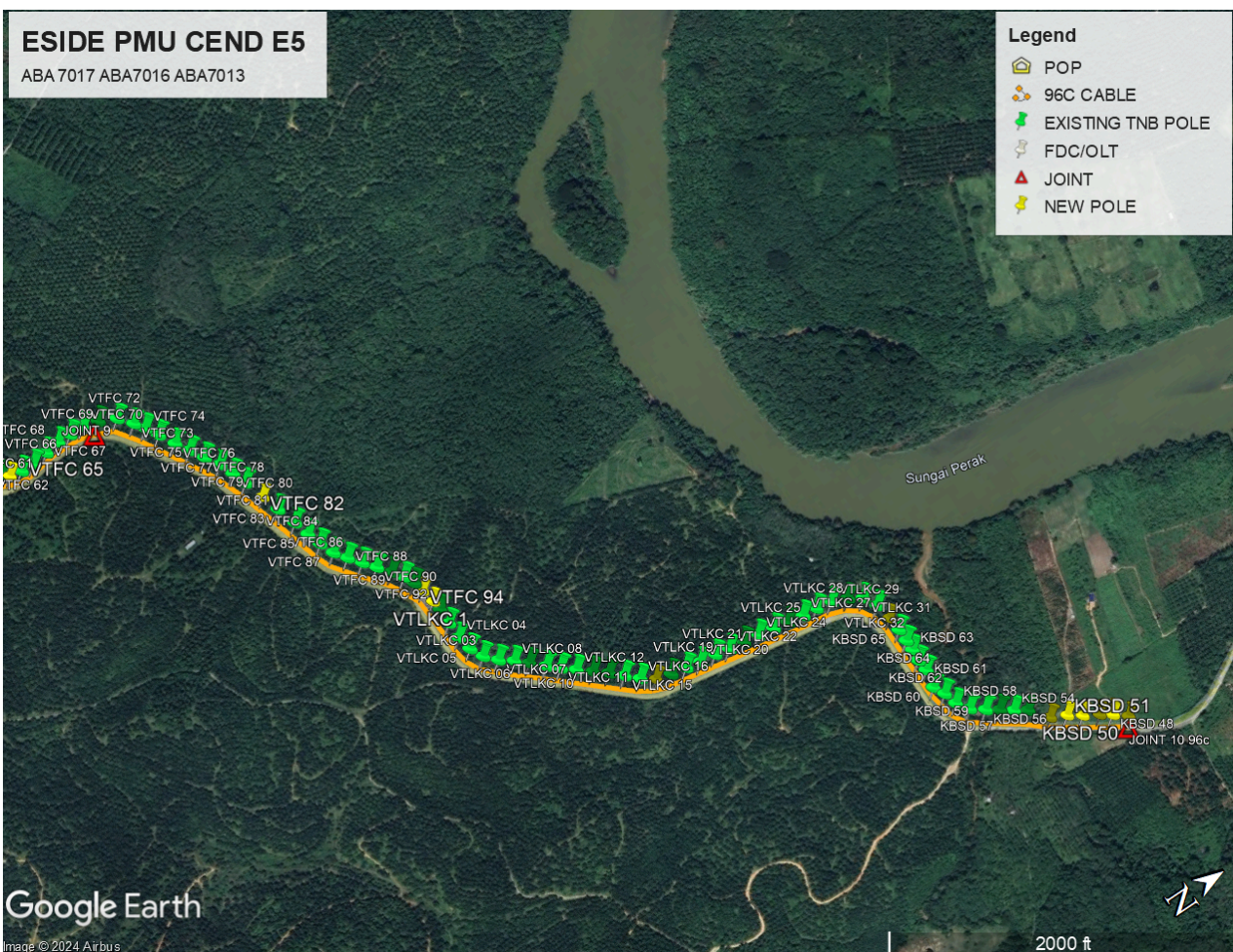
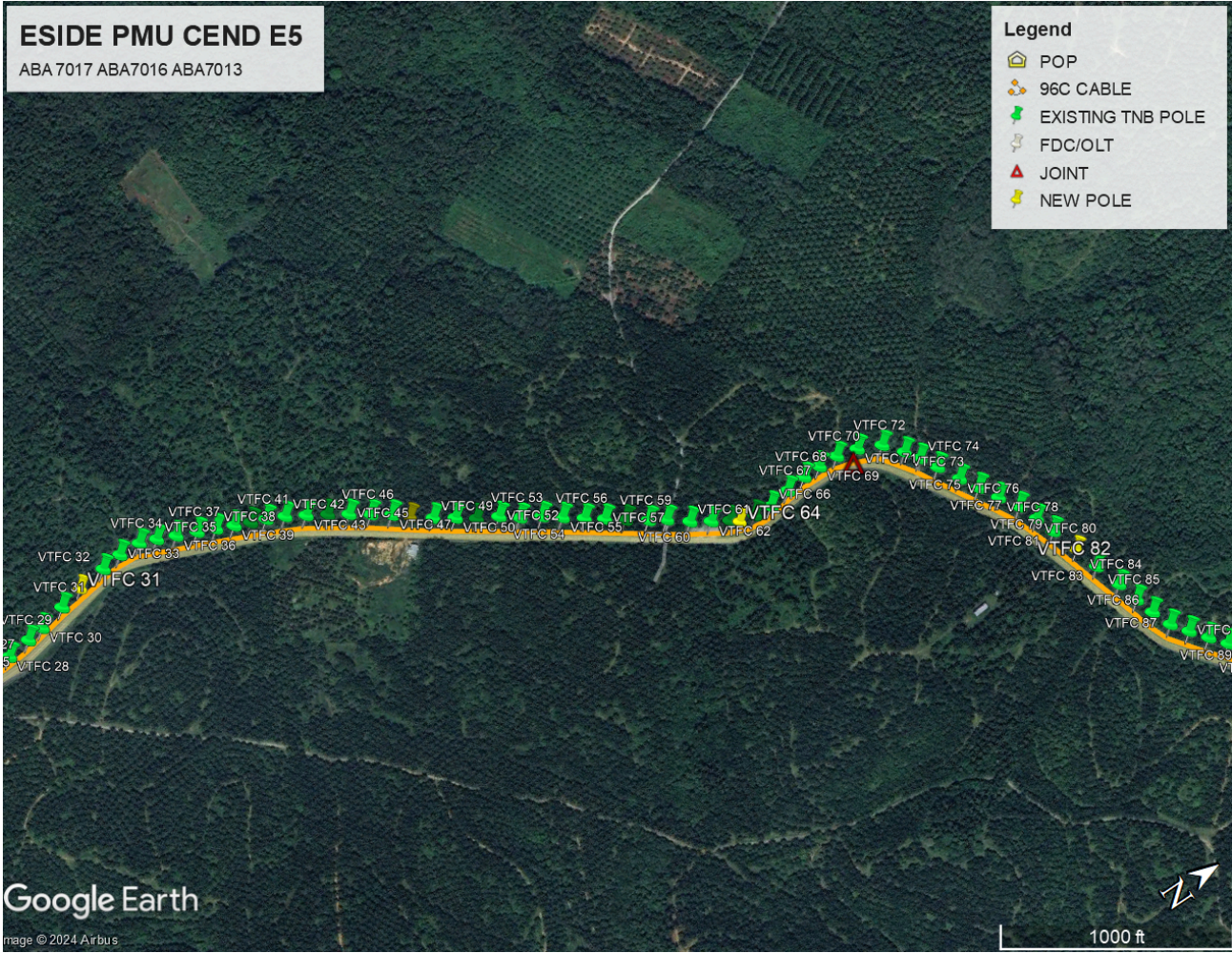




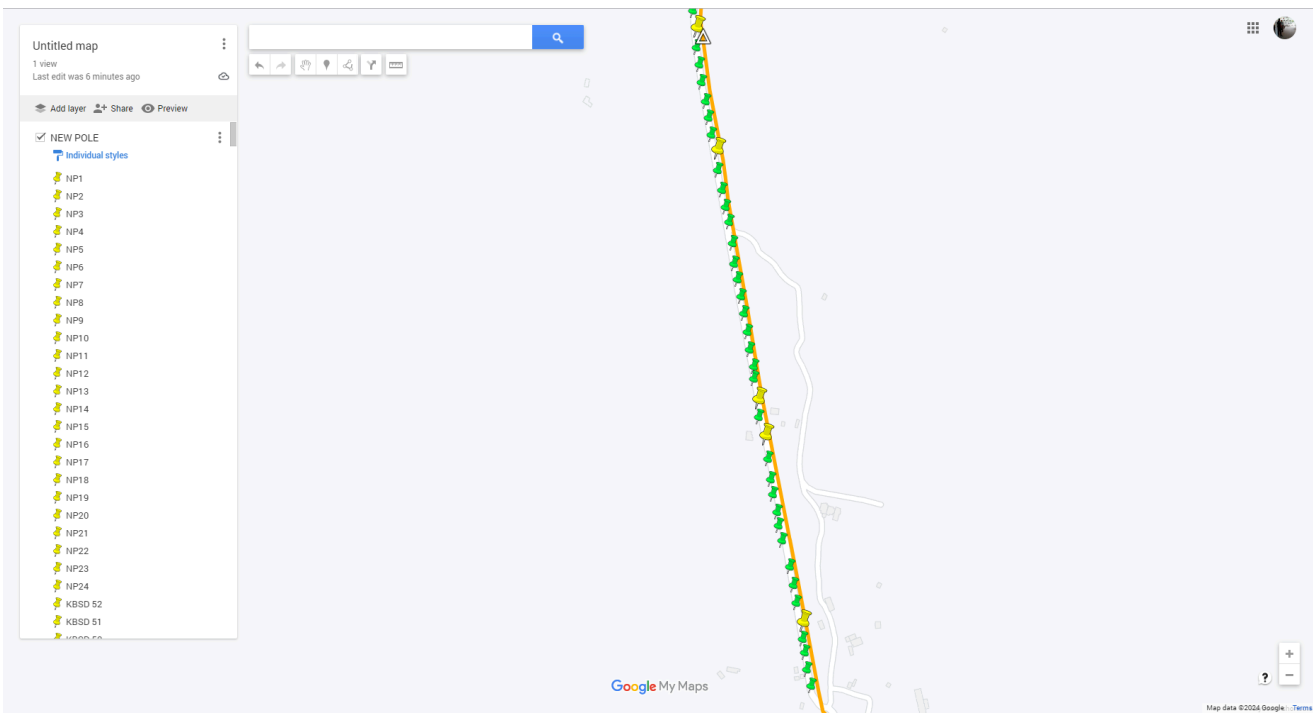
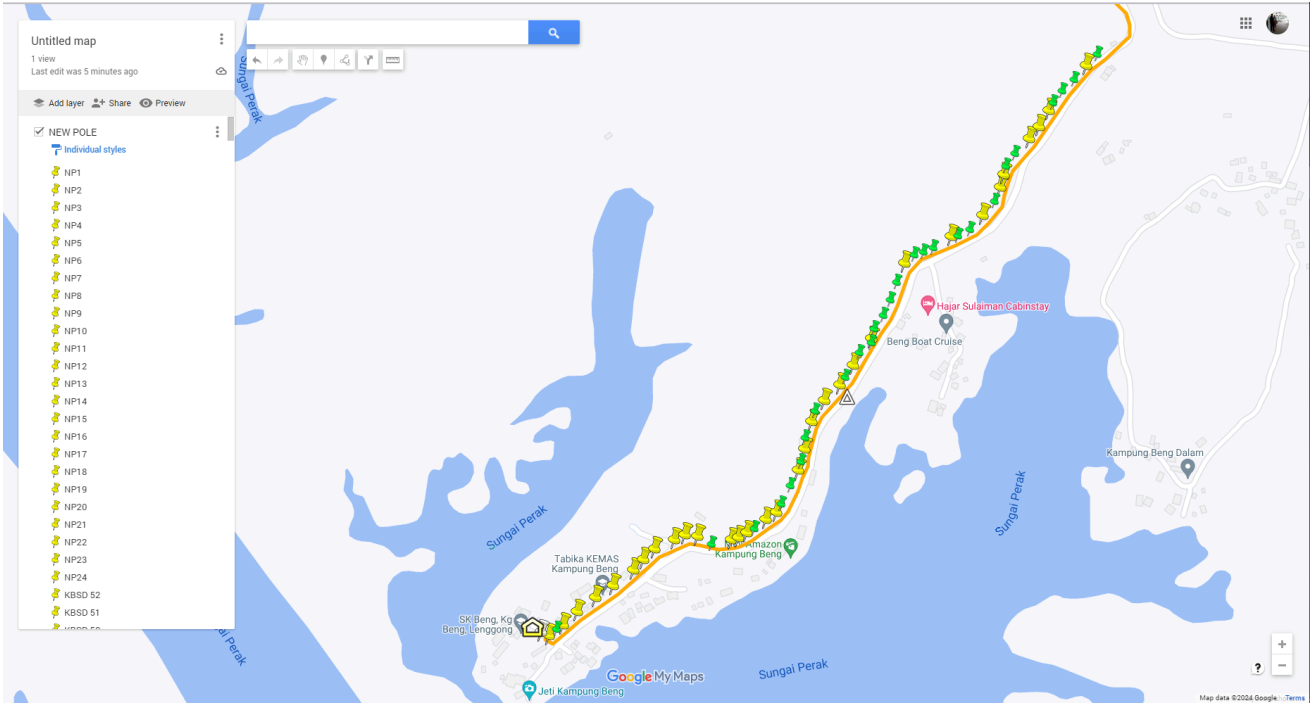


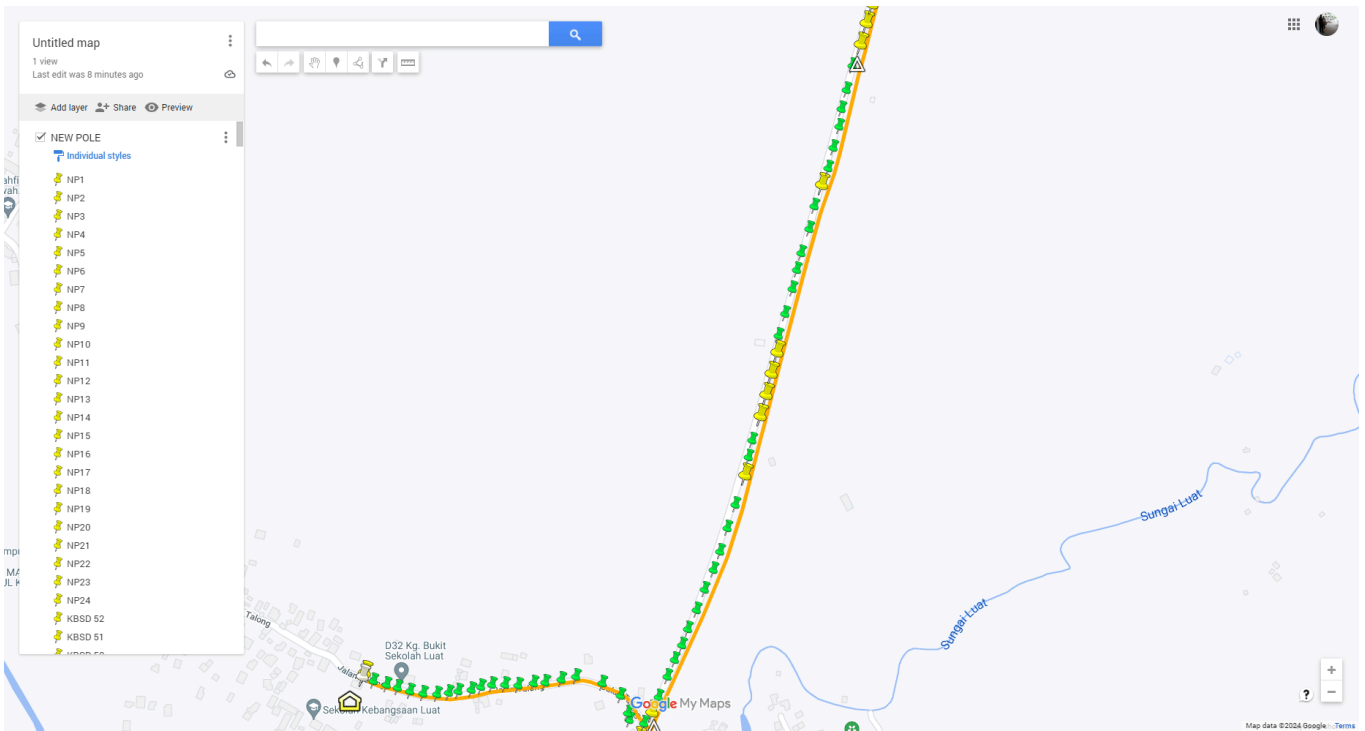
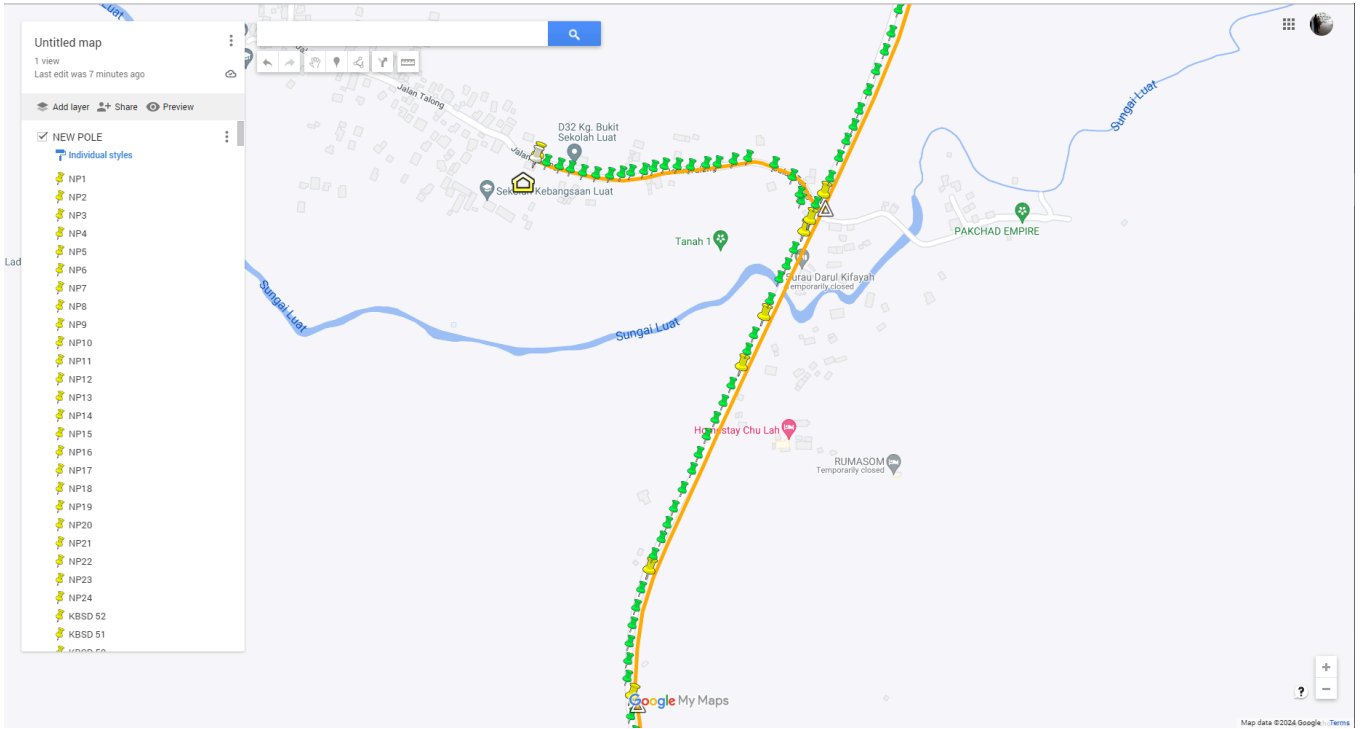


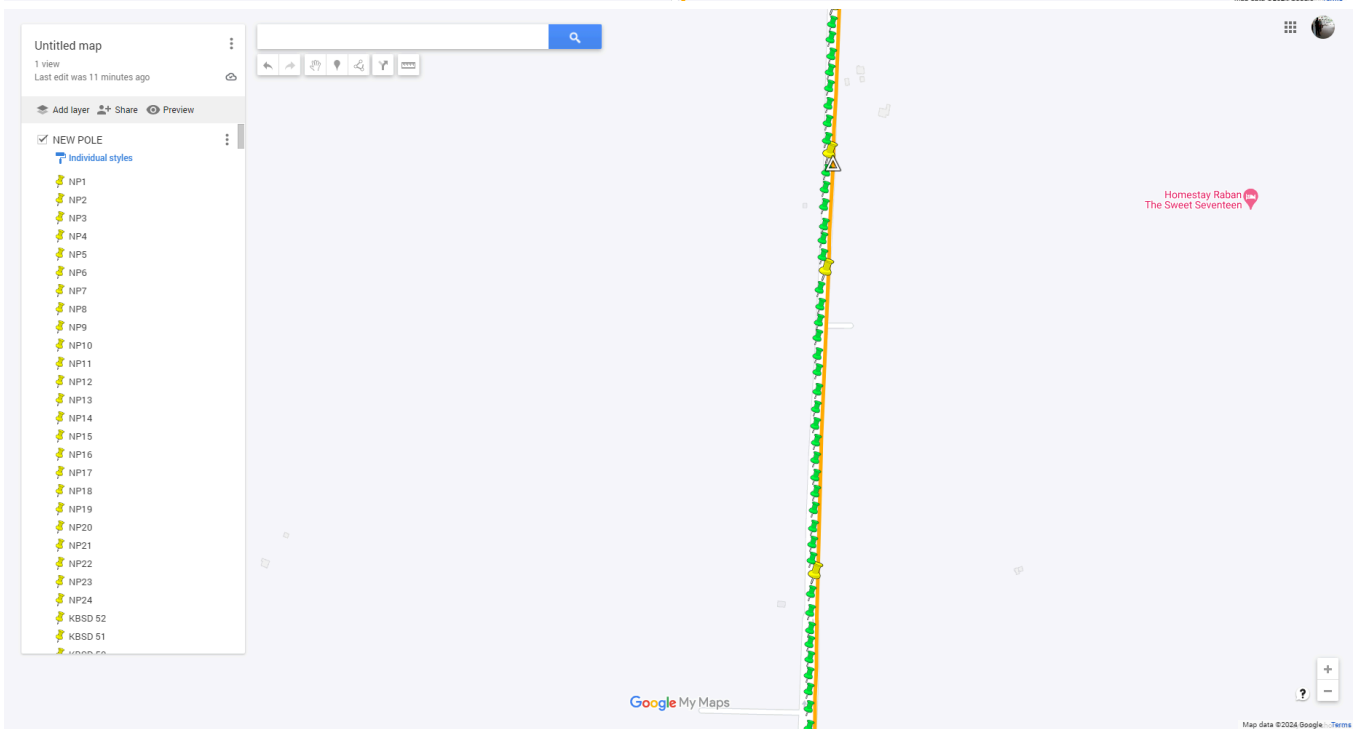
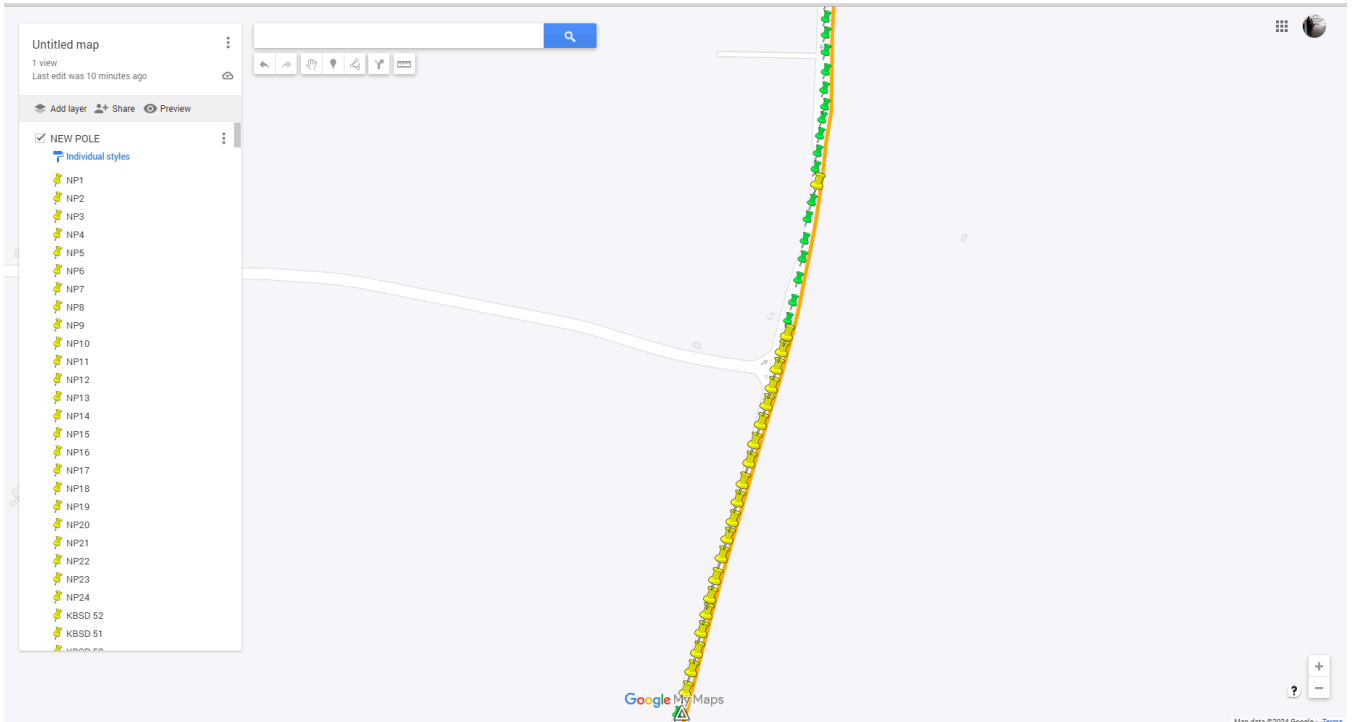


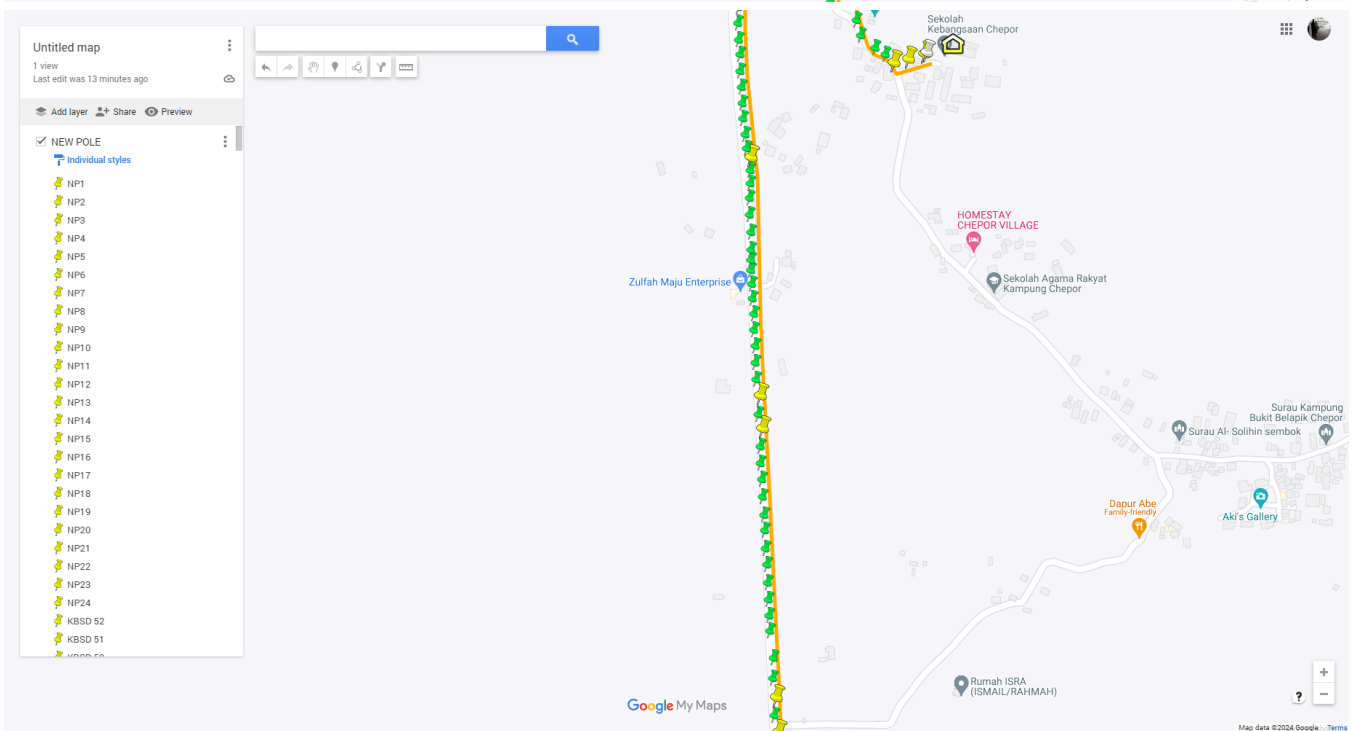
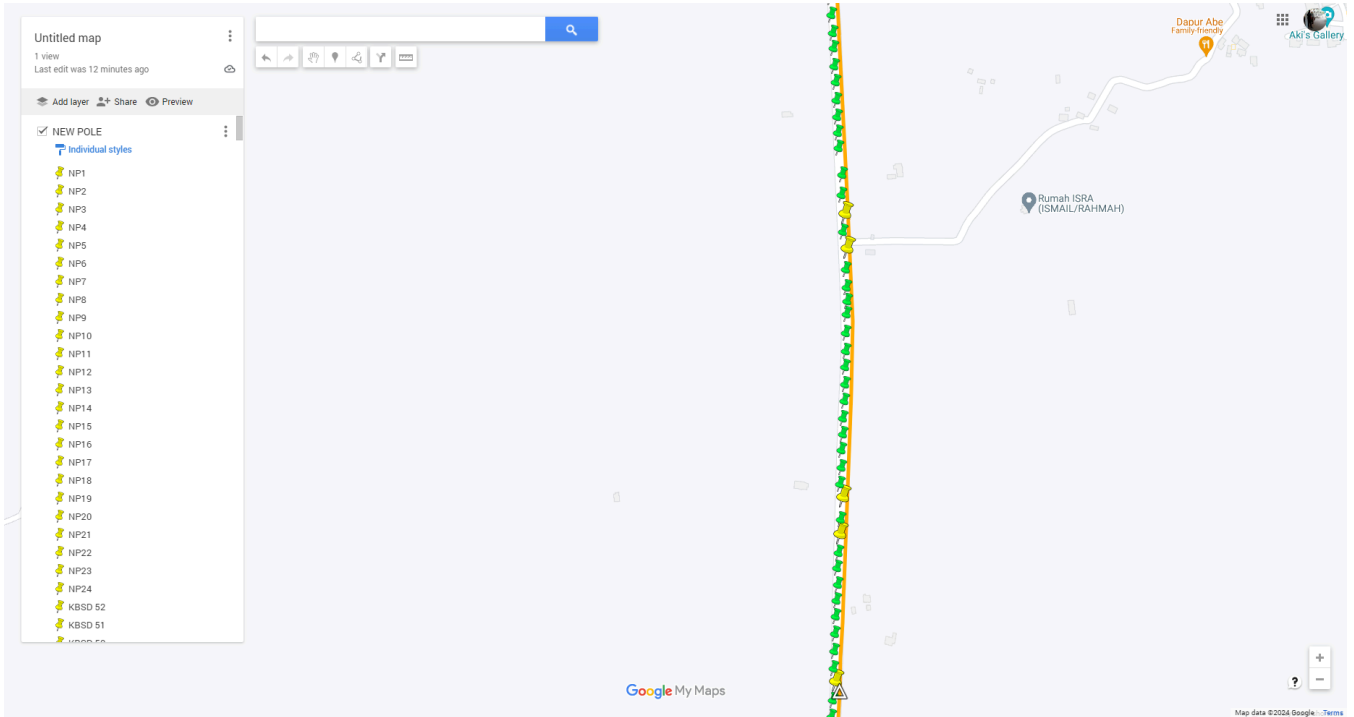


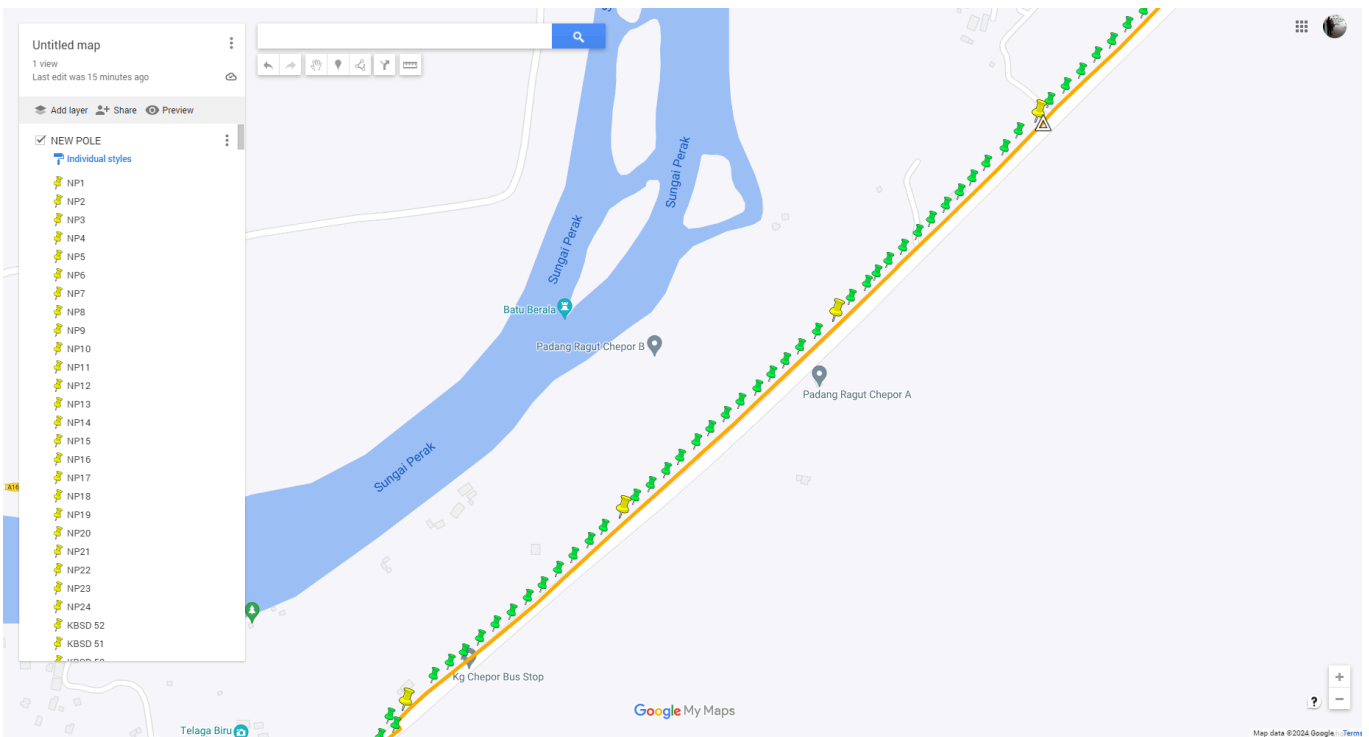
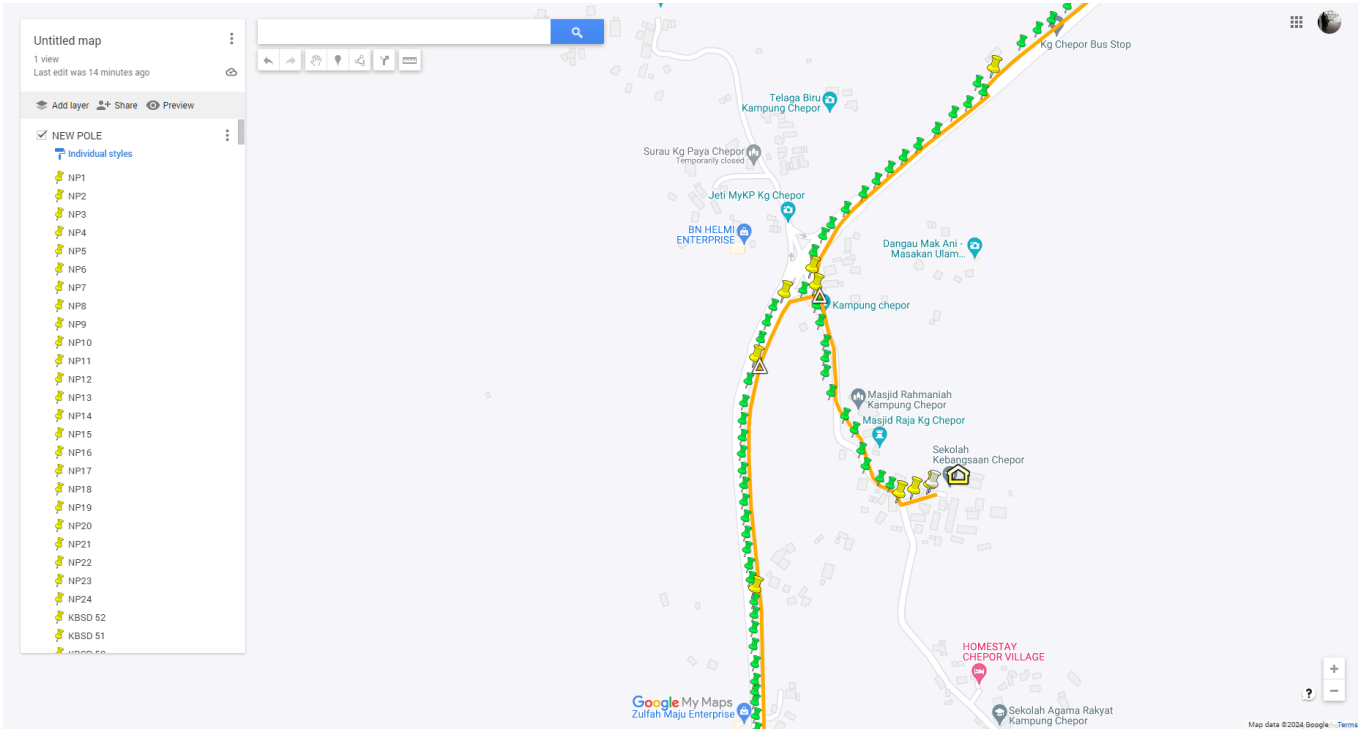
3.2 Overview site area - Google Map (Routing Plan)

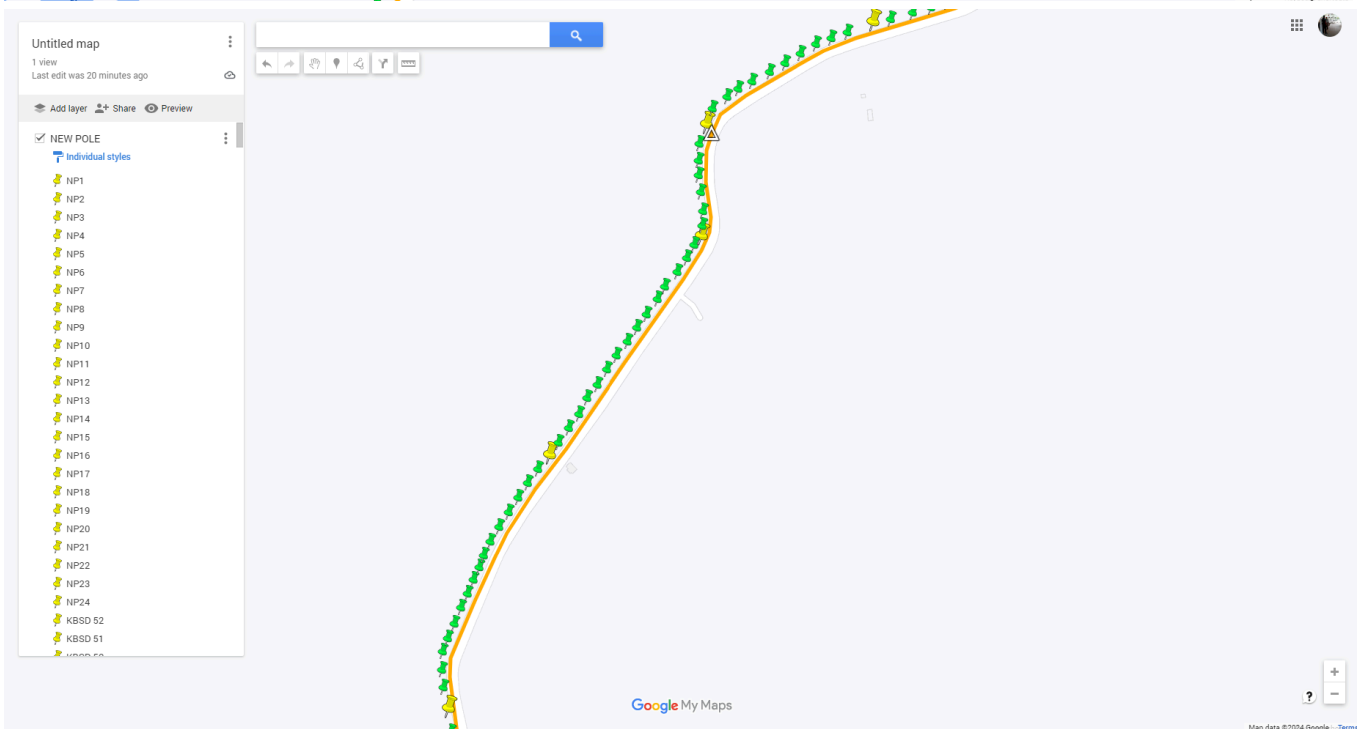
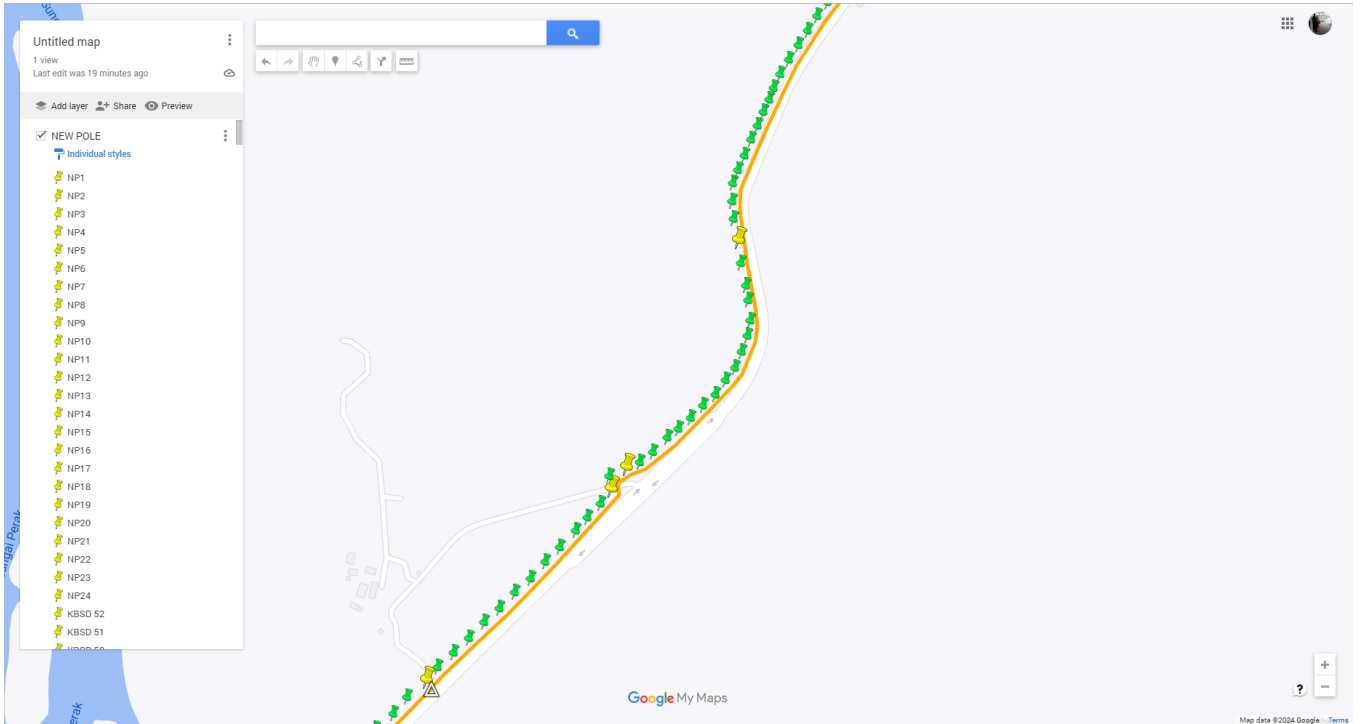


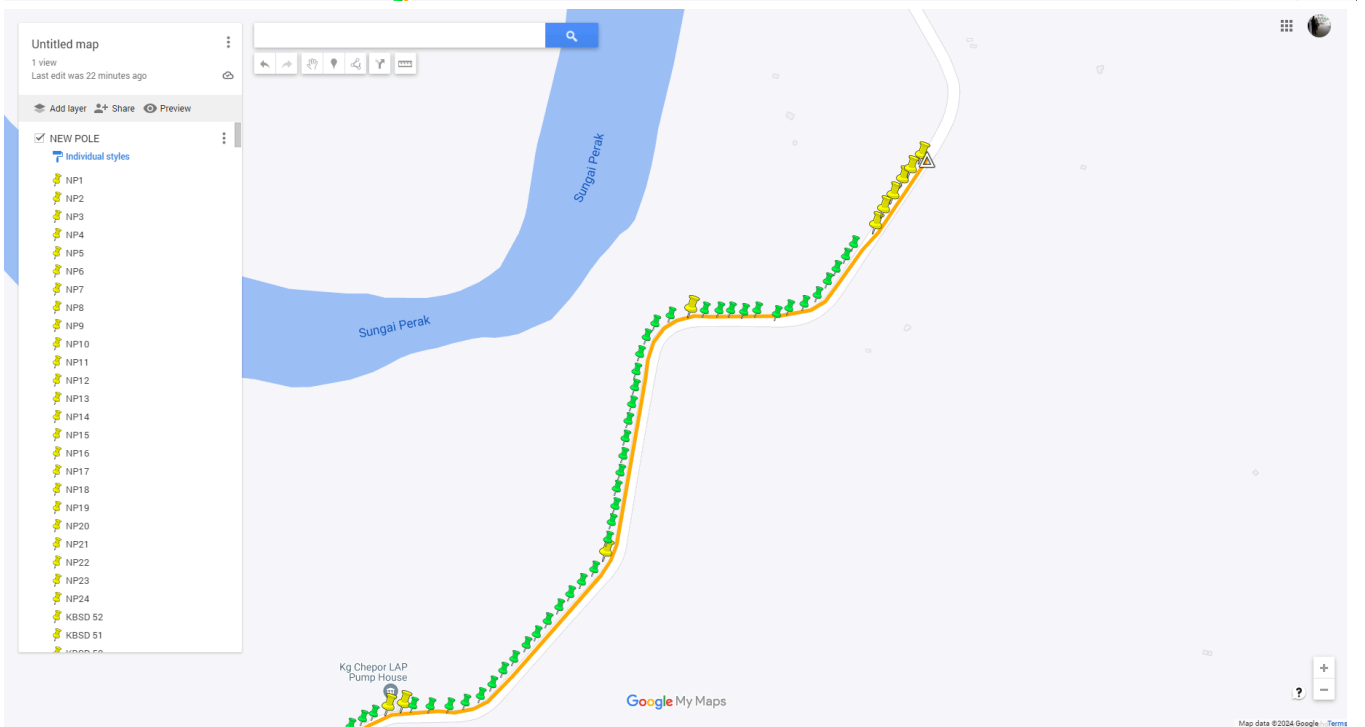
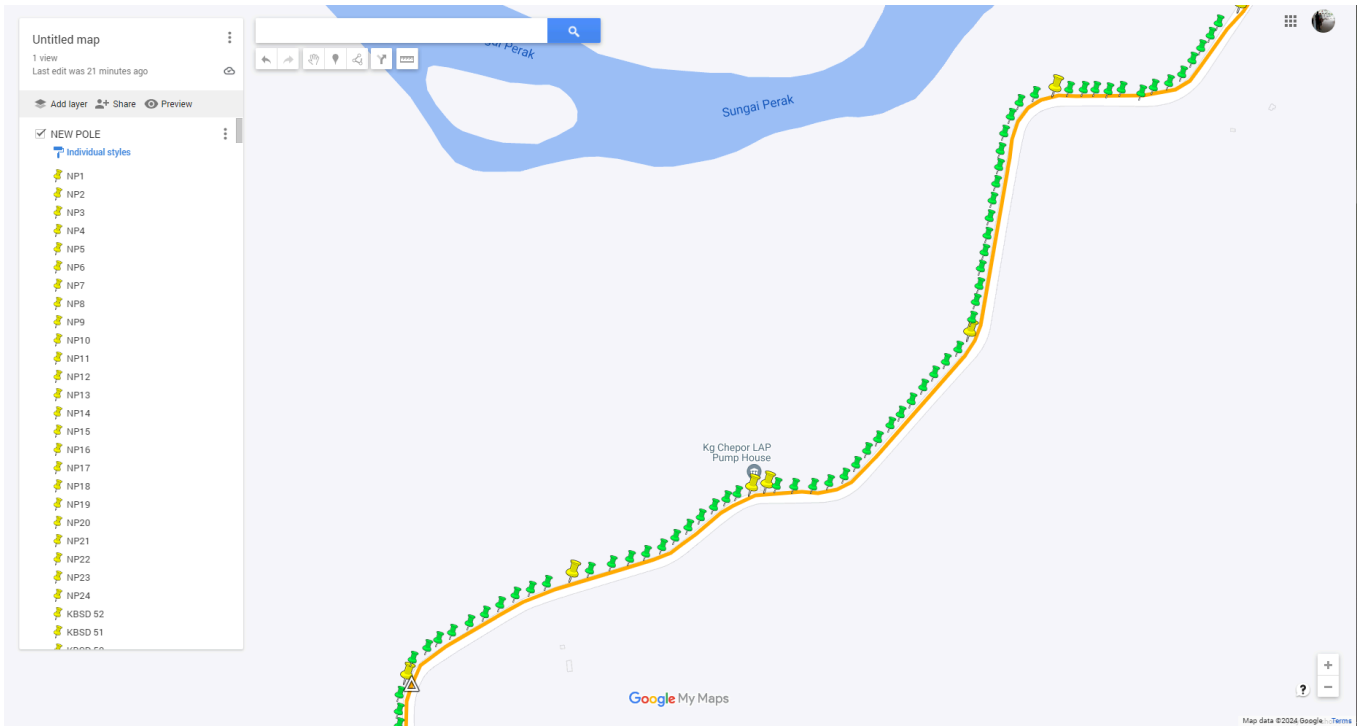






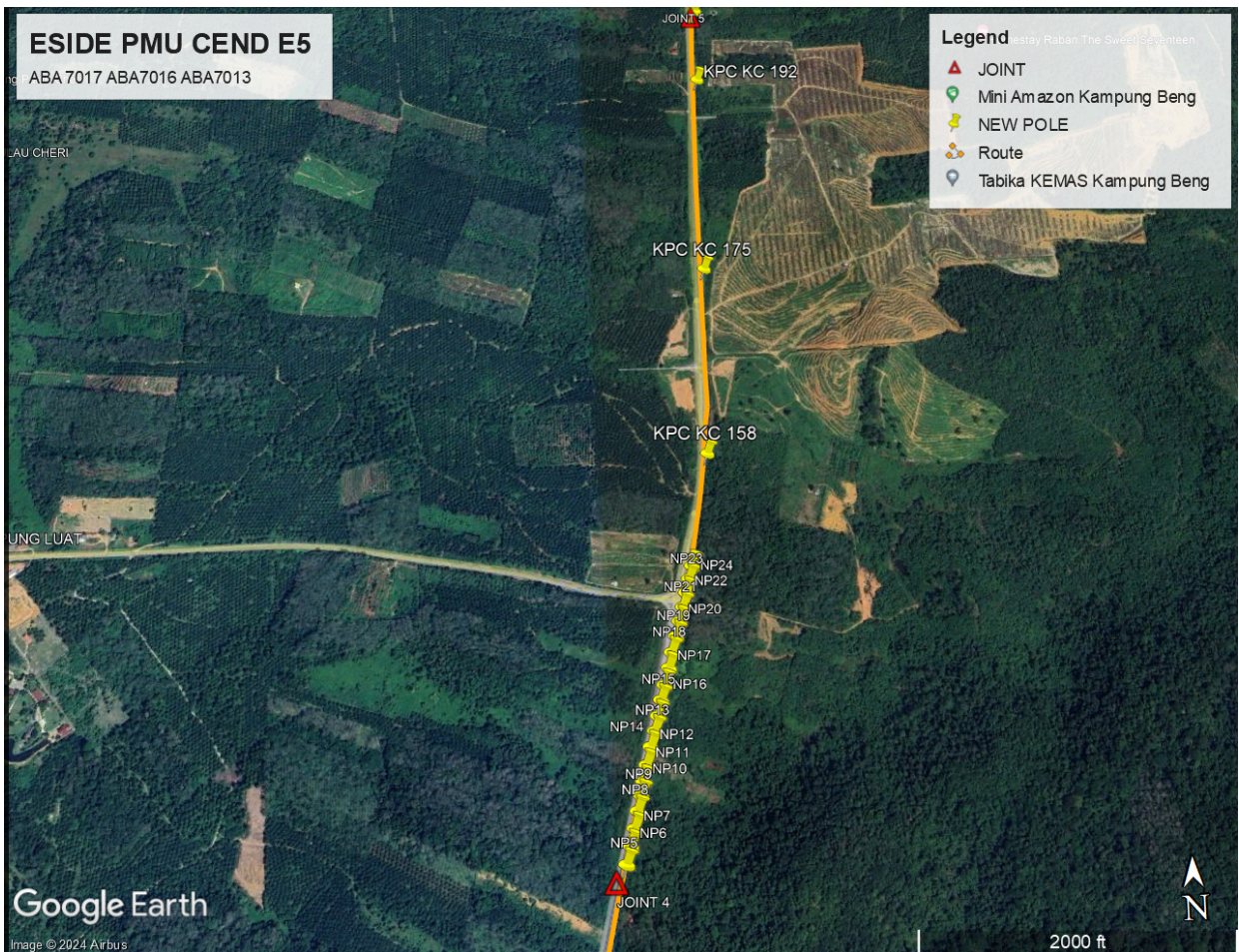
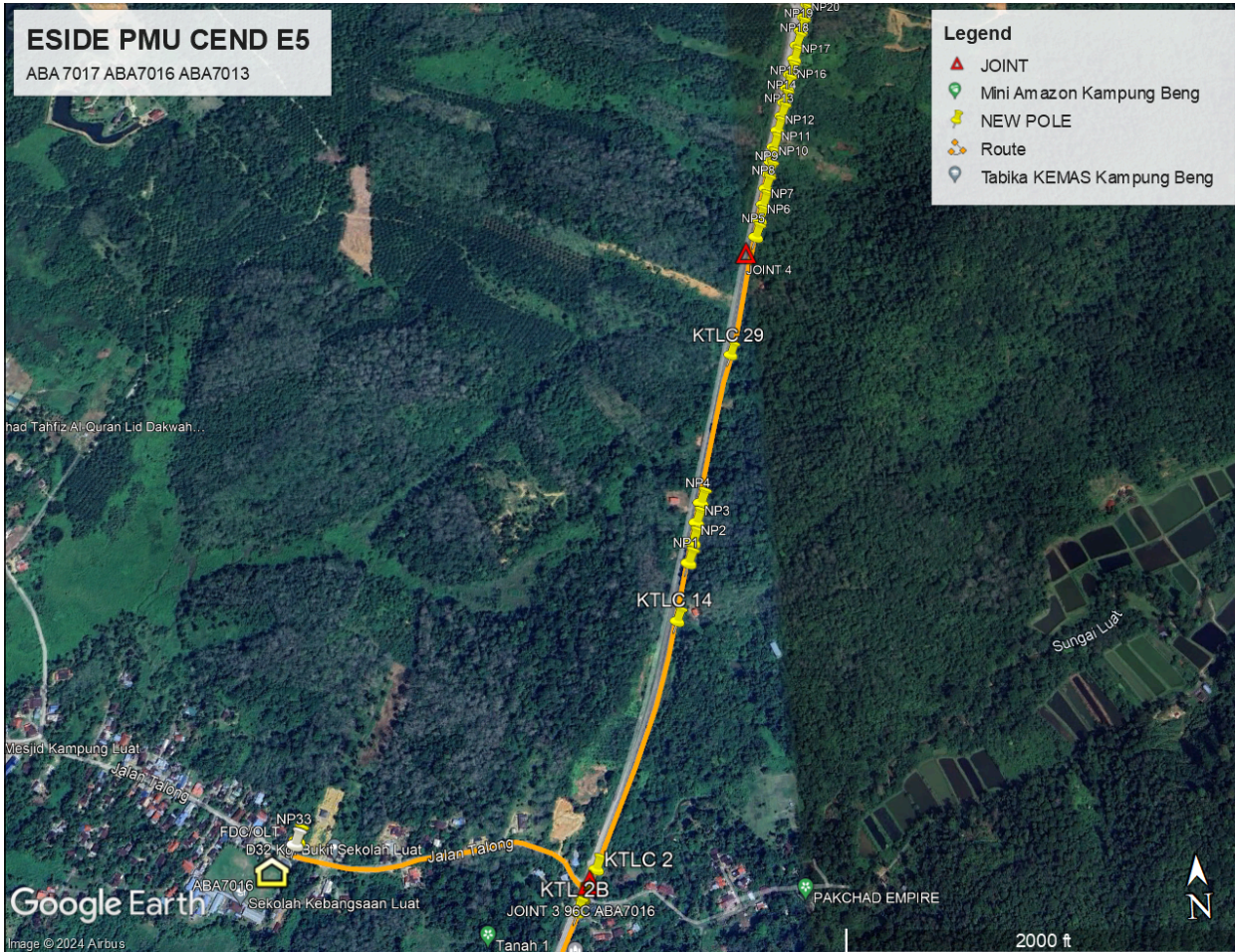


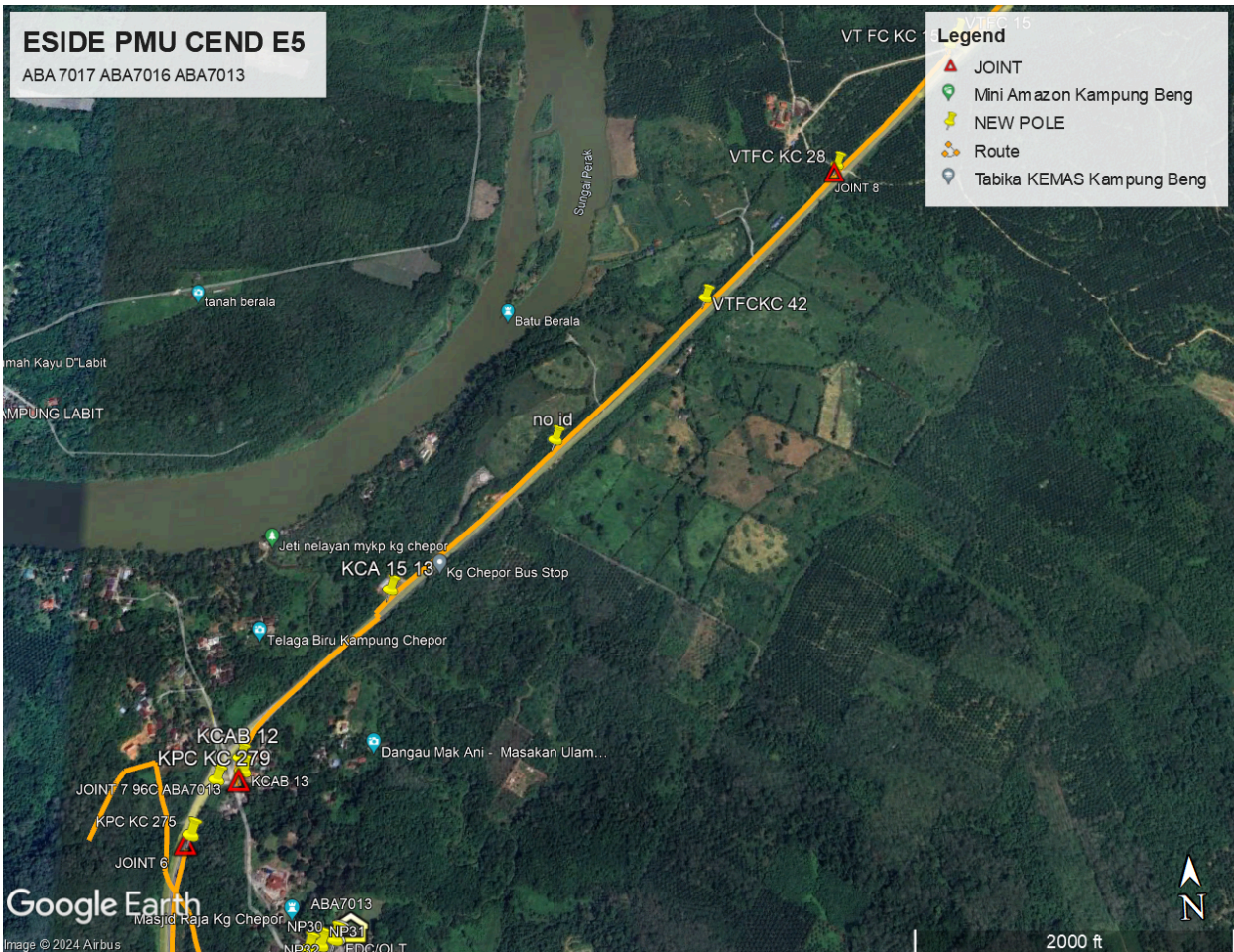


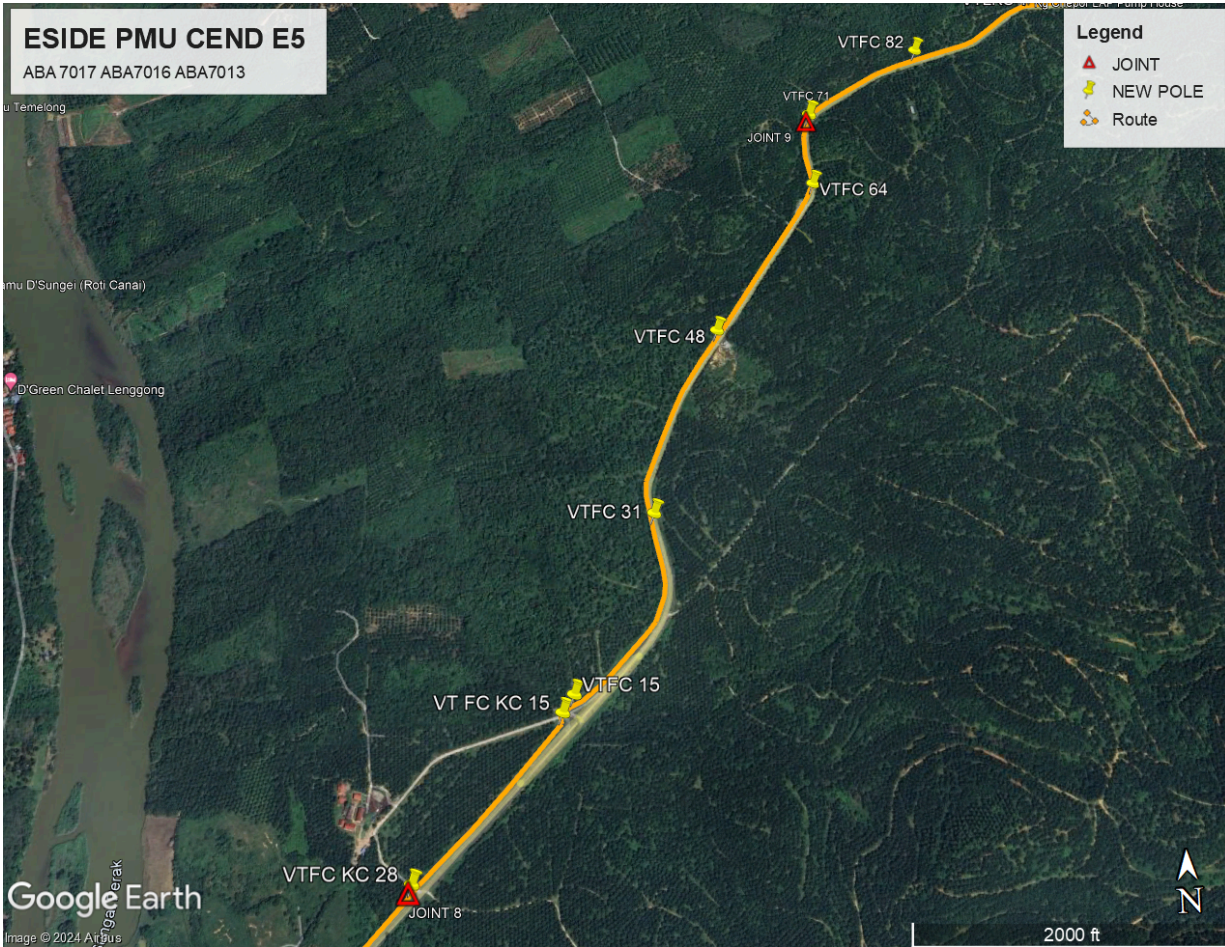


3.3 Site Plan - KMZ Routing (Prop New Pole)

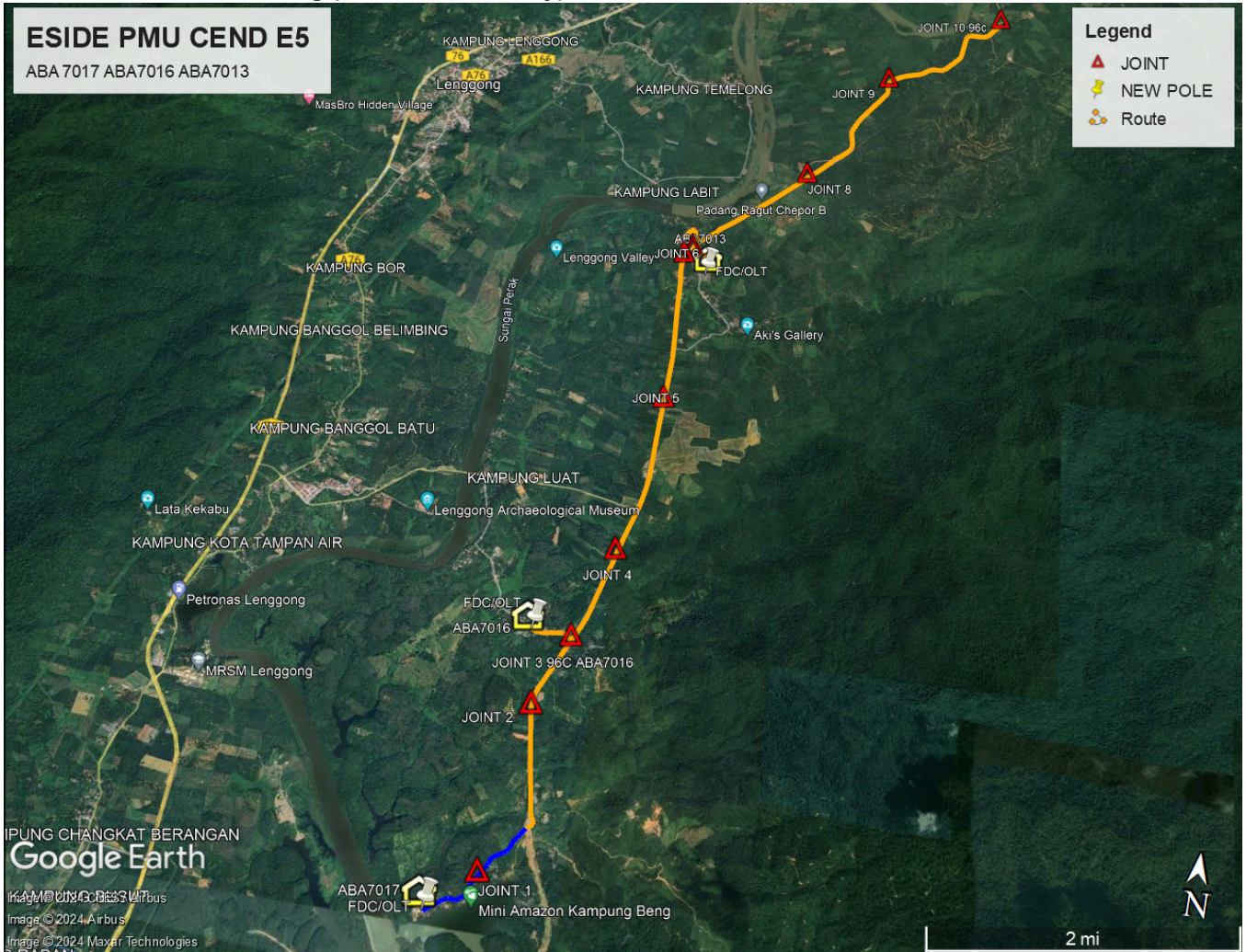






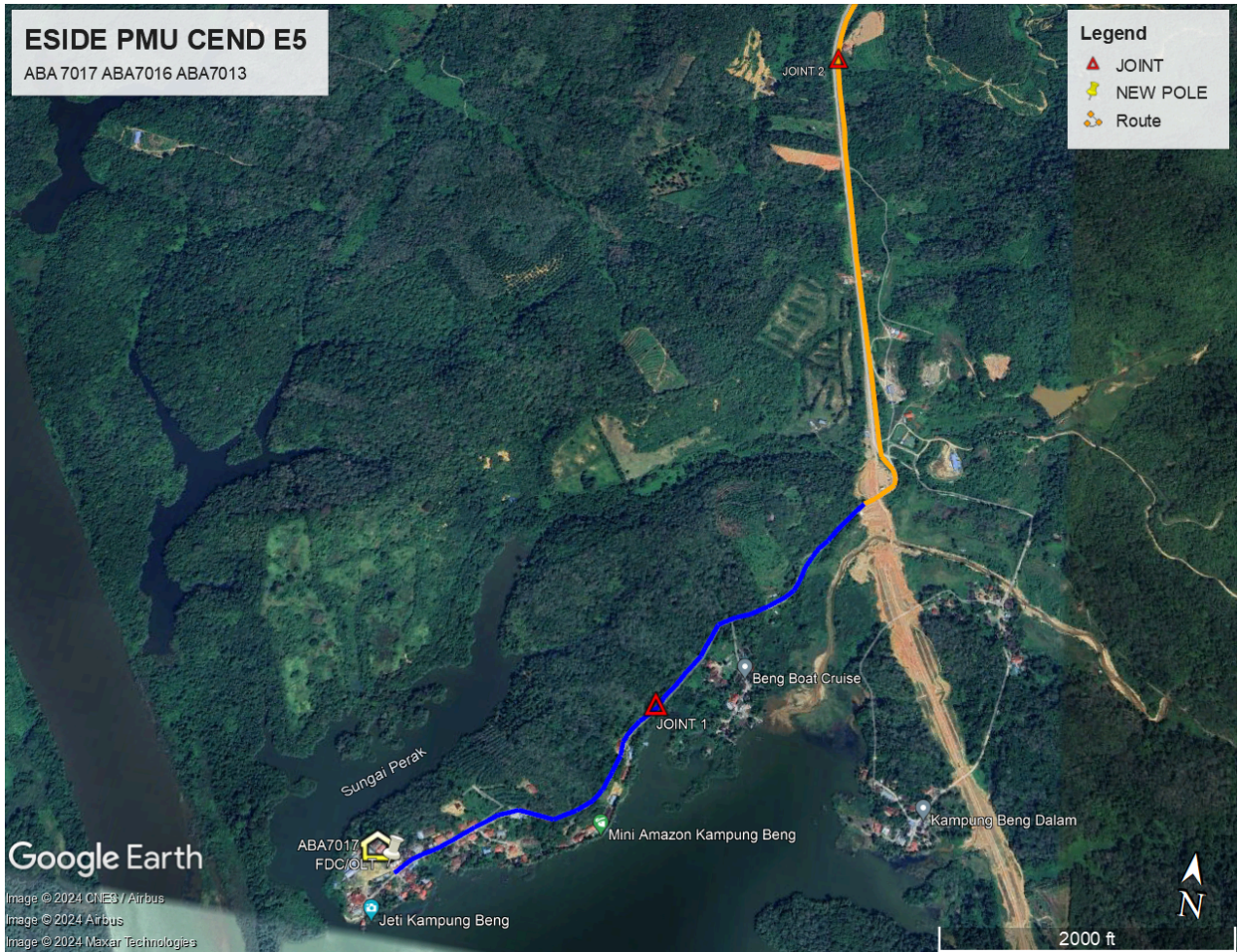


3.4 Site Plan – KMZ Routing (All Local Authority)



Orange Colour – JKR Kuala Kangsar

Blue Color - Majlis Daerah Lenggong



Orange Colour – JKR Kuala Kangsar

Blue Color - Majlis Daerah Lenggong

4.0 PROPOSED NEW POLE

Proposed New Pole Coordinate			
Pole Number	Latitude	Longitude	Remark
T001	5.128885	101.032055	JOINT
T002	5.124742	101.027670	
T003	5.120956	101.026199	
T004	5.118810	101.023389	
T005	5.118602	101.022552	
T006	5.116499	101.019160	
T007	5.115323	101.017876	
T008	5.115999	101.018222	
T009	5.110980	101.015752	
T010	5.108349	101.014437	
T011	5.103666	101.012299	
T012	5.103678	101.012500	
T013	5.100999	101.009444	
T014	5.097999	101.006555	
T015	5.095377	101.003406	
T016	5.092694	101.000459	
T017	5.089852	100.997784	
T018	5.089211	100.997820	
T019	5.089211	100.997820	
T020	5.088854	100.997985	
T021	5.088360	100.997944	
T022	5.088237	100.998041	
T023	5.088237	100.998041	
T024	5.087668	100.998304	
T025	5.087668	100.998304	
T026	5.087365	100.998464	
T027	5.087281	100.998574	
T028	5.086752	100.998773	
T029	5.086643	100.998910	
T030	5.086492	100.999101	
T031	5.086492	100.999101	
T032	5.086492	100.999101	OLT
T033	5.088158	100.997130	
T034	5.088256	100.997132	
T035	5.085391	100.996851	
T036	5.082336	100.997219	
T037	5.081393	100.997371	
T038	5.076768	100.997505	

Proposed New Pole Coordinate			
Pole Number	Latitude	Longitude	Remark
T039	5.076631	100.997512	
T040	5.072940	100.997305	
T041	5.072170	100.997177	
T042	5.069889	100.997111	
T043	5.069526	100.997184	
T044	5.063774	100.996876	
T045	5.059556	100.996418	
T046	5.057344	100.996294	
T047	5.057344	100.996294	
T048	5.057344	100.996294	
T049	5.056802	100.996076	
T050	5.056802	100.996076	
T051	5.056678	100.996036	
T052	5.055738	100.995788	
T053	5.055738	100.995788	
T054	5.055499	100.995744	
T055	5.055201	100.995697	
T056	5.055201	100.995697	
T057	5.054309	100.995462	
T058	5.054309	100.995462	
T059	5.054770	100.995315	
T060	5.053477	100.994994	
T061	5.053477	100.994994	
T062	5.053282	100.994858	
T063	5.053282	100.994858	
T064	5.052565	100.994656	
T065	5.052084	100.994745	
T066	5.047471	100.993394	
T067	5.047471	100.993394	
T068	5.047471	100.993394	
T069	5.047041	100.993260	
T070	5.050754	100.994350	
T071	5.043567	100.987460	
T072	5.043567	100.987460	
T073	5.043567	100.987460	
T074	5.043567	100.987460	
T075	5.043567	100.987460	
T076	5.046123	100.993267	
T077	5.042202	100.991519	
T078	5.042945	100.991429	
T079	5.043061	100.991362	

Proposed New Pole Coordinate			
Pole Number	Latitude	Longitude	Remark
T080	5.043297	100.991226	
T081	5.043508	100.990923	
T082	5.043500	100.990618	
T083	5.043493	100.990381	
T084	5.043481	100.990271	
T085	5.043450	100.990091	
T086	5.043415	100.989828	
T087	5.043406	100.989573	
T088	5.043383	100.989390	
T089	5.043364	100.989028	
T090	5.043364	100.989028	
T091	5.043270	100.988848	
T092	5.043270	100.988848	
T093	5.043218	100.988565	
T094	5.043462	100.988238	
T095	5.043396	100.988141	
T096	5.043442	100.988019	
T097	5.043395	100.987865	
T098	5.043447	100.987660	
T099	5.043567	100.987460	OLT
T100	5.042202	100.991519	
T101	5.042935	100.991924	
T102	5.040823	100.990869	
T103	5.042202	100.991519	
T104	5.040823	100.990869	
T105	5.039976	100.990723	
T106	5.037440	100.989411	
T107	5.035367	100.989137	
T108	5.033405	100.989186	
T109	5.028864	100.989526	
T110	5.028864	100.989526	
T111	5.026705	100.992842	
T112	5.026705	100.992842	
T113	5.026705	100.992842	
T114	5.026705	100.992842	
T115	5.026705	100.992842	
T116	5.022436	100.990635	
T117	5.022436	100.990635	
T118	5.022436	100.990635	
T119	5.022436	100.990635	
T120	5.023214	100.989729	

Proposed New Pole Coordinate			
Pole Number	Latitude	Longitude	Remark
T121	5.023214	100.989729	
T122	5.023214	100.989729	
T123	5.022833	100.989130	
T124	5.022833	100.989130	
T125	5.021934	100.988917	
T126	5.022305	100.988804	
T127	5.022305	100.988804	
T128	5.021686	100.988417	
T129	5.021686	100.988417	
T130	5.021686	100.988417	
T131	5.021686	100.988417	
T132	5.019474	100.987705	
T134	5.027921	100.992185	
T135	5.022118	100.987427	
T136	5.022118	100.987427	
T137	5.020821	100.987381	
T138	5.022118	100.987427	
T139	5.020690	100.987429	
T140	5.021384	100.987434	
T141	5.021384	100.987434	
T142	5.020324	100.987286	
T143	5.020384	100.987377	
T144	5.020397	100.986897	
T145	5.019450	100.986416	
T146	5.018991	100.986823	
T147	5.019450	100.986416	
T148	5.017905	100.985610	
T149	5.018872	100.986198	
T150	5.018894	100.986564	
T151	5.018351	100.986318	
T152	5.018296	100.986215	
T153	5.018178	100.986057	
T154	5.018296	100.986215	
T155	5.018349	100.985957	
T156	5.017624	100.985790	
T157	5.017627	100.985434	
T158	5.017441	100.985335	
T159	5.017249	100.985259	
T160	5.017249	100.985259	
T161	5.017013	100.984791	
T162	5.017169	100.984307	

CONTRACT FOR SUPPLY, INSTALLATION AND COMMISSIONING OF FTTX NETWORK INFRASTRUCTURE FOR ALLO TECHNOLOGY SDN BHD - POP 2 PROJECT (TP E-SIDE) - PMU CEND (3 POPS)

Proposed New Pole Coordinate			
Pole Number	Latitude	Longitude	Remark
T163	5.017013	100.984791	
T164	5.016552	100.984139	
T165	5.017133	100.984606	
T166	5.016647	100.983564	
T167	5.016647	100.983564	
T168	5.016706	100.983700	
T169	5.016580	100.983922	
T170	5.016451	100.983254	
T171	5.016116	100.982762	
T173	5.016116	100.982762	
T174	5.015740	100.982605	
T175	5.015626	100.982394	
T176	5.016451	100.983254	
T177	5.016116	100.982762	
T178	5.016116	100.982762	
T179	5.015740	100.982605	
T180	5.015626	100.982394	
T182	5.016552	100.984139	
T183	5.017133	100.984606	
T184	5.015564	100.982355	OLT

5.0 OVERALL POLE (PROPOSE NEW & EXISTING)

No.	Point / Pole ID	Distance	Latitude	Longitude	Local Authority
1	NEW POLE	40m	5.128885	101.032055	JKR KUALA KANGSAR
2	KBSD47	40m	5.127106	101.031014	JKR KUALA KANGSAR
3	KBSD 48	40m	5.126888	101.030677	JKR KUALA KANGSAR
4	KBSD 49	40m	5.126888	101.030677	JKR KUALA KANGSAR
5	KBSD 50	40m	5.126468	101.030624	JKR KUALA KANGSAR
6	KBSD 51	40m	5.126458	101.030367	JKR KUALA KANGSAR
7	KBSD 52	40m	5.126458	101.030367	JKR KUALA KANGSAR
8	KBSD 53	40m	5.125563	101.029619	JKR KUALA KANGSAR
9	KBSD 54	40m	5.125563	101.029619	JKR KUALA KANGSAR
10	KBSD 55	40m	5.125563	101.029619	JKR KUALA KANGSAR
11	KBSD 56	40m	5.125563	101.029619	JKR KUALA KANGSAR
12	KBSD 57	40m	5.124966	101.029152	JKR KUALA KANGSAR
13	KBSD 58	40m	5.124966	101.029152	JKR KUALA KANGSAR
14	KBSD 59	40m	5.124939	101.028993	JKR KUALA KANGSAR
15	KBSD 60	40m	5.124703	101.028313	JKR KUALA KANGSAR
16	KBSD 61	40m	5.124703	101.028313	JKR KUALA KANGSAR
17	KBSD 62	40m	5.124686	101.027938	JKR KUALA KANGSAR
18	KBSD 63	40m	5.124686	101.027938	JKR KUALA KANGSAR
19	KBSD 64	40m	5.124742	101.027670	JKR KUALA KANGSAR
20	KBSD 65	40m	5.124742	101.027670	JKR KUALA KANGSAR
21	NEW POLE	40m	5.124742	101.027670	JKR KUALA KANGSAR
22	VTLKC 32	40m	5.124412	101.027221	JKR KUALA KANGSAR
23	VTLKC 31	40m	5.124387	101.027098	JKR KUALA KANGSAR
24	VTLKC 30	40m	5.124092	101.026853	JKR KUALA KANGSAR
25	VTLKC 29	40m	5.123883	101.026766	JKR KUALA KANGSAR
26	VTLKC 28	40m	5.123883	101.026766	JKR KUALA KANGSAR
27	VTLKC 27	40m	5.123883	101.026766	JKR KUALA KANGSAR
28	VTLKC 26	40m	5.123883	101.026766	JKR KUALA KANGSAR
29	VTLKC 25	40m	5.122655	101.026527	JKR KUALA KANGSAR
30	VTLKC 24	40m	5.122655	101.026527	JKR KUALA KANGSAR
31	VTLKC 23	40m	5.122655	101.026527	JKR KUALA KANGSAR
32	VTLKC 22	40m	5.122655	101.026527	JKR KUALA KANGSAR
33	VTLKC 21	40m	5.121688	101.026345	JKR KUALA KANGSAR
34	VTLKC 20	40m	5.121688	101.026345	JKR KUALA KANGSAR
35	VTLKC 19	40m	5.121688	101.026345	JKR KUALA KANGSAR
36	VTLKC 18	40m	5.120956	101.026199	JKR KUALA KANGSAR
37	NEW POLE	40m	5.120956	101.026199	JKR KUALA KANGSAR
38	VTLKC 16	40m	5.120956	101.026199	JKR KUALA KANGSAR
39	VTLKC 15	40m	5.120569	101.025869	JKR KUALA KANGSAR

No.	Point / Pole ID	Distance	Latitude	Longitude	Local Authority
40	VTLKC 14	40m	5.120569	101.025869	JKR KUALA KANGSAR
41	VTLKC 13	40m	5.120144	101.025566	JKR KUALA KANGSAR
42	VTLKC 12	40m	5.120144	101.025566	JKR KUALA KANGSAR
43	VTLKC 11	40m	5.120144	101.025566	JKR KUALA KANGSAR
44	VTLKC 10	40m	5.119479	101.024932	JKR KUALA KANGSAR
45	VTLKC 09	40m	5.119479	101.024932	JKR KUALA KANGSAR
46	VTLKC 08	40m	5.119209	101.024556	JKR KUALA KANGSAR
47	VTLKC 07	40m	5.119209	101.024556	JKR KUALA KANGSAR
48	VTLKC 06	40m	5.118934	101.024154	JKR KUALA KANGSAR
49	VTLKC 05	40m	5.118934	101.024154	JKR KUALA KANGSAR
50	VTLKC 04	40m	5.118856	101.023586	JKR KUALA KANGSAR
51	VTLKC 03	40m	5.118856	101.023586	JKR KUALA KANGSAR
52	VTLKC 02	40m	5.118809	101.023388	JKR KUALA KANGSAR
53	NEW POLE	40m	5.118810	101.023389	JKR KUALA KANGSAR
54	NEW POLE	40m	5.118602	101.022552	JKR KUALA KANGSAR
55	VTFC 93	40m	5.118602	101.022552	JKR KUALA KANGSAR
56	VTFC 92	40m	5.118551	101.022314	JKR KUALA KANGSAR
57	VTFC 91	40m	5.118508	101.022195	JKR KUALA KANGSAR
58	VTFC 90	40m	5.118280	101.021861	JKR KUALA KANGSAR
59	VTFC 89	40m	5.118280	101.021861	JKR KUALA KANGSAR
60	VTFC 88	40m	5.118280	101.021861	JKR KUALA KANGSAR
61	VTFC 87	40m	5.117944	101.021569	JKR KUALA KANGSAR
62	VTFC 86	40m	5.117944	101.021569	JKR KUALA KANGSAR
63	VTFC 85	40m	5.117944	101.021569	JKR KUALA KANGSAR
64	VTFC 84	40m	5.117528	101.020781	JKR KUALA KANGSAR
65	VTFC 83	40m	5.116418	101.019537	JKR KUALA KANGSAR
66	NEW POLE	40m	5.116499	101.019160	JKR KUALA KANGSAR
67	VTFC 81	40m	5.117377	101.020209	JKR KUALA KANGSAR
68	VTFC 80	40m	5.117197	101.019872	JKR KUALA KANGSAR
69	VTFC 79	40m	5.116955	101.019296	JKR KUALA KANGSAR
70	VTFC 78	40m	5.116800	101.019030	JKR KUALA KANGSAR
71	VTFC 77	40m	5.116800	101.019030	JKR KUALA KANGSAR
72	VTFC 76	40m	5.116800	101.019030	JKR KUALA KANGSAR
73	VTFC 75	40m	5.116524	101.018511	JKR KUALA KANGSAR
74	VTFC 74	40m	5.116524	101.018511	JKR KUALA KANGSAR
75	VTFC 73	40m	5.116439	101.018376	JKR KUALA KANGSAR
76	VTFC 72	40m	5.116009	101.018049	JKR KUALA KANGSAR
77	NEW POLE	40m	5.115323	101.017876	JKR KUALA KANGSAR
78	VTFC 70	40m	5.115323	101.017876	JKR KUALA KANGSAR
79	VTFC 69	40m	5.115323	101.017876	JKR KUALA KANGSAR
80	VTFC 68	40m	5.115323	101.017876	JKR KUALA KANGSAR

No.	Point / Pole ID	Distance	Latitude	Longitude	Local Authority
81	VTFC 67	40m	5.115323	101.017876	JKR KUALA KANGSAR
82	VTFC 66	40m	5.114434	101.017890	JKR KUALA KANGSAR
83	VTFC 65	40m	5.115294	101.018960	JKR KUALA KANGSAR
84	NEW POLE	40m	5.115999	101.018222	JKR KUALA KANGSAR
85	VTFC 63	40m	5.114136	101.017826	JKR KUALA KANGSAR
86	VTFC 62	40m	5.114136	101.017826	JKR KUALA KANGSAR
87	VTFC 61	40m	5.113236	101.017231	JKR KUALA KANGSAR
88	VTFC 60	40m	5.113236	101.017231	JKR KUALA KANGSAR
89	VTFC 59	40m	5.113236	101.017231	JKR KUALA KANGSAR
90	VTFC 58	40m	5.112755	101.016974	JKR KUALA KANGSAR
91	VTFC 57	40m	5.112755	101.016974	JKR KUALA KANGSAR
92	VTFC 56	40m	5.112755	101.016974	JKR KUALA KANGSAR
93	VTFC 55	40m	5.112213	101.016530	JKR KUALA KANGSAR
94	VTFC 54	40m	5.112213	101.016530	JKR KUALA KANGSAR
95	VTFC 53	40m	5.112213	101.016530	JKR KUALA KANGSAR
96	VTFC 52	40m	5.112213	101.016530	JKR KUALA KANGSAR
97	VTFC 51	40m	5.111204	101.015675	JKR KUALA KANGSAR
98	VTFC 50	40m	5.111204	101.015675	JKR KUALA KANGSAR
99	VTFC 49	40m	5.110980	101.015493	JKR KUALA KANGSAR
100	NEW POLE	40m	5.110980	101.015752	JKR KUALA KANGSAR
101	VTFC 47	40m	5.110980	101.015493	JKR KUALA KANGSAR
102	VTFC 46	40m	5.110171	101.014896	JKR KUALA KANGSAR
103	VTFC 45	40m	5.110171	101.014896	JKR KUALA KANGSAR
104	VTFC 44	40m	5.110171	101.014896	JKR KUALA KANGSAR
105	VTFC 43	40m	5.110171	101.014896	JKR KUALA KANGSAR
106	VTFC 42	40m	5.109878	101.014772	JKR KUALA KANGSAR
107	VTFC 41	40m	5.109878	101.014772	JKR KUALA KANGSAR
108	VTFC 40	40m	5.109268	101.014558	JKR KUALA KANGSAR
109	VTFC 39	40m	5.109268	101.014558	JKR KUALA KANGSAR
110	VTFC 38	40m	5.109140	101.014483	JKR KUALA KANGSAR
111	VTFC 37	40m	5.109055	101.014444	JKR KUALA KANGSAR
112	VTFC 36	40m	5.108834	101.014293	JKR KUALA KANGSAR
113	VTFC 35	40m	5.108526	101.014175	JKR KUALA KANGSAR
114	VTFC 34	40m	5.108376	101.014022	JKR KUALA KANGSAR
115	VTFC 33	40m	5.108376	101.014022	JKR KUALA KANGSAR
116	VTFC 32	40m	5.107580	101.014339	JKR KUALA KANGSAR
117	NEW POLE	40m	5.108349	101.014437	JKR KUALA KANGSAR
118	VTFC 30	40m	5.107070	101.014293	JKR KUALA KANGSAR
119	VTFC 29	40m	5.107070	101.014293	JKR KUALA KANGSAR
120	VTFC 28	40m	5.107070	101.014293	JKR KUALA KANGSAR
121	VTFC 27	40m	5.106150	101.014340	JKR KUALA KANGSAR

No.	Point / Pole ID	Distance	Latitude	Longitude	Local Authority
122	VTFC 26	40m	5.106150	101.014340	JKR KUALA KANGSAR
123	VTFC 25	40m	5.105414	101.014032	JKR KUALA KANGSAR
124	VTFC 24	40m	5.105414	101.014032	JKR KUALA KANGSAR
125	VTFC 23	40m	5.105414	101.014032	JKR KUALA KANGSAR
126	VTFC 22	40m	5.104847	101.013489	JKR KUALA KANGSAR
127	VTFC 21	40m	5.104847	101.013489	JKR KUALA KANGSAR
128	VTFC 20	40m	5.104692	101.013278	JKR KUALA KANGSAR
129	VTFC 19	40m	5.104692	101.013278	JKR KUALA KANGSAR
130	VTFC 18	40m	5.103963	101.012630	JKR KUALA KANGSAR
131	VTFC 17	40m	5.103963	101.012630	JKR KUALA KANGSAR
132	VTFC 16	40m	5.103819	101.012257	JKR KUALA KANGSAR
133	NEW POLE	40m	5.103666	101.012299	JKR KUALA KANGSAR
134	NEW POLE	40m	5.103678	101.012500	JKR KUALA KANGSAR
135	VT FC KC 16	40m	5.103394	101.011899	JKR KUALA KANGSAR
136	VT FC KC 17	40m	5.103171	101.011637	JKR KUALA KANGSAR
137	VT FC KC 18	40m	5.103171	101.011637	JKR KUALA KANGSAR
138	VT FC KC 19	40m	5.102782	101.011254	JKR KUALA KANGSAR
139	VT FC KC 20	40m	5.102782	101.011254	JKR KUALA KANGSAR
140	VT FC KC 21	40m	5.102782	101.011254	JKR KUALA KANGSAR
141	VT FC KC 22	40m	5.102398	101.010834	JKR KUALA KANGSAR
142	VT FC KC 23	40m	5.102072	101.010491	JKR KUALA KANGSAR
143	VT FC KC 24	40m	5.101747	101.010208	JKR KUALA KANGSAR
144	VT FC KC 25	40m	5.101747	101.010208	JKR KUALA KANGSAR
145	VT FC KC 26	40m	5.101110	101.009681	JKR KUALA KANGSAR
146	VT FC KC 27	40m	5.101110	101.009681	JKR KUALA KANGSAR
147	NEW POLE	40m	5.100999	101.009444	JKR KUALA KANGSAR
148	VT FC KC 29	40m	5.100677	101.009241	JKR KUALA KANGSAR
149	VT FC KC 30	40m	5.100677	101.009241	JKR KUALA KANGSAR
150	VT FC KC 31	40m	5.100292	101.009024	JKR KUALA KANGSAR
151	VT FC KC 32	40m	5.099957	101.008769	JKR KUALA KANGSAR
152	VT FC KC 33	40m	5.099957	101.008769	JKR KUALA KANGSAR
153	VT FC KC 34	40m	5.099563	101.008316	JKR KUALA KANGSAR
154	VT FC KC 35	40m	5.099307	101.008068	JKR KUALA KANGSAR
155	VT FC KC 36	40m	5.099307	101.008068	JKR KUALA KANGSAR
156	VT FC KC 37	40m	5.098665	101.007461	JKR KUALA KANGSAR
157	VT FC KC 38	40m	5.098665	101.007461	JKR KUALA KANGSAR
158	VT FC KC 39	40m	5.098665	101.007461	JKR KUALA KANGSAR
159	VT FC KC 40	40m	5.098070	101.006902	JKR KUALA KANGSAR
160	VT FC KC 41	40m	5.098070	101.006902	JKR KUALA KANGSAR
161	NEW POLE	40m	5.097999	101.006555	JKR KUALA KANGSAR
162	VT FC KC 43	40m	5.097687	101.006482	JKR KUALA KANGSAR

No.	Point / Pole ID	Distance	Latitude	Longitude	Local Authority
163	VT FC KC 44	40m	5.097547	101.006067	JKR KUALA KANGSAR
164	VT FC KC 45	40m	5.097547	101.006067	JKR KUALA KANGSAR
165	VT FC KC 46	40m	5.097245	101.005756	JKR KUALA KANGSAR
166	VT FC KC 47	40m	5.097245	101.005756	JKR KUALA KANGSAR
167	VT FC KC 48	40m	5.096586	101.005128	JKR KUALA KANGSAR
168	VT FC KC 49	40m	5.096586	101.005128	JKR KUALA KANGSAR
169	VT FC KC 50	40m	5.096586	101.005128	JKR KUALA KANGSAR
170	VT FC KC 51	40m	5.096455	101.004758	JKR KUALA KANGSAR
171	VT FC KC 52	40m	5.095913	101.003995	JKR KUALA KANGSAR
172	VT FC KC 53	40m	5.095913	101.003995	JKR KUALA KANGSAR
173	VT FC KC 54	40m	5.095377	101.003406	JKR KUALA KANGSAR
174	VT FC KC 55	40m	5.095377	101.003406	JKR KUALA KANGSAR
175	NEW POLE	40m	5.095377	101.003406	JKR KUALA KANGSAR
176	KCA 15 1	40m	5.095042	101.002846	JKR KUALA KANGSAR
177	KCA 15 2	40m	5.095042	101.002846	JKR KUALA KANGSAR
178	KCA 15 3	40m	5.095042	101.002846	JKR KUALA KANGSAR
179	KCA 15 4	40m	5.094308	101.002514	JKR KUALA KANGSAR
180	KCA 15 5	40m	5.094308	101.002514	JKR KUALA KANGSAR
181	KCA 15 6	40m	5.093797	101.002063	JKR KUALA KANGSAR
182	KCA 15 7	40m	5.093797	101.002063	JKR KUALA KANGSAR
183	KCA 15 8	40m	5.093344	101.001416	JKR KUALA KANGSAR
184	KCA 15 9	40m	5.093344	101.001416	JKR KUALA KANGSAR
185	KCA 15 10	40m	5.093123	101.001060	JKR KUALA KANGSAR
186	KCA 15 11	40m	5.093022	101.000889	JKR KUALA KANGSAR
187	KCA 15 12	40m	5.093022	101.000889	JKR KUALA KANGSAR
188	NEW POLE	40m	5.092694	101.000459	JKR KUALA KANGSAR
189	KCA 15 14	40m	5.092543	101.000365	JKR KUALA KANGSAR
190	KCA 15 15	40m	5.092043	100.999578	JKR KUALA KANGSAR
191	KCA 15 16	40m	5.092043	100.999578	JKR KUALA KANGSAR
192	KCAB 1	40m	5.091878	100.999292	JKR KUALA KANGSAR
193	KCAB 2	40m	5.091878	100.999292	JKR KUALA KANGSAR
194	KCAB 3	40m	5.091878	100.999292	JKR KUALA KANGSAR
195	KCAB 4	40m	5.091407	100.998863	JKR KUALA KANGSAR
196	KCAB 5	40m	5.091407	100.998863	JKR KUALA KANGSAR
197	KCAB 6	40m	5.091017	100.998594	JKR KUALA KANGSAR
198	KCAB 7	40m	5.091017	100.998594	JKR KUALA KANGSAR
199	KCAB 8	40m	5.090264	100.997911	JKR KUALA KANGSAR
200	KCAB 9	40m	5.090264	100.997911	JKR KUALA KANGSAR
201	KCAB 10	40m	5.090264	100.997911	JKR KUALA KANGSAR
202	KCAB 11	40m	5.089852	100.997784	JKR KUALA KANGSAR
203	NEW POLE	40m	5.089852	100.997784	JKR KUALA KANGSAR

No.	Point / Pole ID	Distance	Latitude	Longitude	Local Authority
204	KCAB 13	40m	5.089687	100.997569	JKR KUALA KANGSAR
205	NEW POLE	40m	5.089211	100.997820	JKR KUALA KANGSAR
206	NEW POLE	40m	5.089211	100.997820	JKR KUALA KANGSAR
207	NEW POLE	40m	5.088854	100.997985	JKR KUALA KANGSAR
208	NEW POLE	40m	5.088360	100.997944	JKR KUALA KANGSAR
209	NEW POLE	40m	5.088237	100.998041	JKR KUALA KANGSAR
210	NEW POLE	40m	5.088237	100.998041	JKR KUALA KANGSAR
211	NEW POLE	40m	5.087668	100.998304	JKR KUALA KANGSAR
212	NEW POLE	40m	5.087668	100.998304	JKR KUALA KANGSAR
213	NEW POLE	40m	5.087365	100.998464	JKR KUALA KANGSAR
214	NEW POLE	40m	5.087281	100.998574	JKR KUALA KANGSAR
215	NEW POLE	40m	5.086752	100.998773	JKR KUALA KANGSAR
216	NEW POLE	40m	5.086643	100.998910	JKR KUALA KANGSAR
217	NEW POLE	40m	5.086492	100.999101	JKR KUALA KANGSAR
218	NEW POLE	40m	5.086492	100.999101	JKR KUALA KANGSAR
219	NEW POLE	40m	5.086492	100.999101	JKR KUALA KANGSAR
220	KCAB 13	40m	5.089687	100.997569	JKR KUALA KANGSAR
221	KPC KC 280	40m	5.089687	100.997569	JKR KUALA KANGSAR
222	NEW POLE	40m	5.088158	100.997130	JKR KUALA KANGSAR
223	KPC KC 278	40m	5.088158	100.997130	JKR KUALA KANGSAR
224	KPC KC 277	40m	5.088158	100.997130	JKR KUALA KANGSAR
225	KPC KC 276	40m	5.088158	100.997130	JKR KUALA KANGSAR
226	NEW POLE	40m	5.088256	100.997132	JKR KUALA KANGSAR
227	KPC KC 274	40m	5.088256	100.997132	JKR KUALA KANGSAR
228	KPC KC 273	40m	5.088256	100.997132	JKR KUALA KANGSAR
229	KPC KC 272	40m	5.087729	100.996987	JKR KUALA KANGSAR
230	KPC KC 271	40m	5.086997	100.996968	JKR KUALA KANGSAR
231	KPC KC 270	40m	5.086997	100.996968	JKR KUALA KANGSAR
232	KPC KC 269	40m	5.086997	100.996968	JKR KUALA KANGSAR
233	KPC KC 268	40m	5.086371	100.996997	JKR KUALA KANGSAR
234	KPC KC 267	40m	5.086371	100.996997	JKR KUALA KANGSAR
235	KPC KC 266	40m	5.085870	100.996977	JKR KUALA KANGSAR
236	KPC KC 265	40m	5.085870	100.996977	JKR KUALA KANGSAR
237	KPC KC 264	40m	5.085508	100.996967	JKR KUALA KANGSAR
238	KPC KC 263	40m	5.085508	100.996967	JKR KUALA KANGSAR
239	KPC KC 262	40m	5.085391	100.996851	JKR KUALA KANGSAR
240	NEW POLE	40m	5.085391	100.996851	JKR KUALA KANGSAR
241	KPC KC 260	40m	5.084776	100.996909	JKR KUALA KANGSAR
242	KPC KC 259	40m	5.084776	100.996909	JKR KUALA KANGSAR
243	KPC KC 258	40m	5.084587	100.996939	JKR KUALA KANGSAR
244	KPC KC 257	40m	5.084042	100.996963	JKR KUALA KANGSAR

No.	Point / Pole ID	Distance	Latitude	Longitude	Local Authority
245	KPC KC 256	40m	5.083765	100.996970	JKR KUALA KANGSAR
246	KPC KC 255	40m	5.083765	100.996970	JKR KUALA KANGSAR
247	KPC KC 254	40m	5.083383	100.996999	JKR KUALA KANGSAR
248	KPC KC 253	40m	5.083383	100.996999	JKR KUALA KANGSAR
249	KPC KC 252	40m	5.082842	100.997154	JKR KUALA KANGSAR
250	KPC KC 251	40m	5.082842	100.997154	JKR KUALA KANGSAR
251	KPC KC 250	40m	5.082842	100.997154	JKR KUALA KANGSAR
252	KPC KC 249	40m	5.082266	100.997143	JKR KUALA KANGSAR
253	KPC KC 248	40m	5.082266	100.997143	JKR KUALA KANGSAR
254	KPC KC 247	40m	5.082266	100.997143	JKR KUALA KANGSAR
255	KPC KC 246	40m	5.081324	100.997195	JKR KUALA KANGSAR
256	NEW POLE	40m	5.082336	100.997219	JKR KUALA KANGSAR
257	KPC KC 244	40m	5.082336	100.997219	JKR KUALA KANGSAR
258	NEW POLE	40m	5.081393	100.997371	JKR KUALA KANGSAR
259	KPC KC 242	40m	5.081393	100.997371	JKR KUALA KANGSAR
260	KPC KC 241	40m	5.080286	100.997217	JKR KUALA KANGSAR
261	KPC KC 240	40m	5.080286	100.997217	JKR KUALA KANGSAR
262	KPC KC 239	40m	5.080286	100.997217	JKR KUALA KANGSAR
263	KPC KC 238	40m	5.079477	100.997234	JKR KUALA KANGSAR
264	KPC KC 237	40m	5.079477	100.997234	JKR KUALA KANGSAR
265	KPC KC 236	40m	5.078940	100.997167	JKR KUALA KANGSAR
266	KPC KC 235	40m	5.078940	100.997167	JKR KUALA KANGSAR
267	KPC KC 234	40m	5.078139	100.997333	JKR KUALA KANGSAR
268	KPC KC 233	40m	5.078139	100.997333	JKR KUALA KANGSAR
269	KPC KC 232	40m	5.078139	100.997333	JKR KUALA KANGSAR
270	KPC KC 231	40m	5.078139	100.997333	JKR KUALA KANGSAR
271	KPC KC 230	40m	5.078454	100.997881	JKR KUALA KANGSAR
272	KPC KC 229	40m	5.078454	100.997881	JKR KUALA KANGSAR
273	NEW POLE	40m	5.076768	100.997505	JKR KUALA KANGSAR
274	KPC KC 227	40m	5.076768	100.997505	JKR KUALA KANGSAR
275	NEW POLE	40m	5.076631	100.997512	JKR KUALA KANGSAR
276	KPC KC 225	40m	5.075858	100.997494	JKR KUALA KANGSAR
277	KPC KC 224	40m	5.075858	100.997494	JKR KUALA KANGSAR
278	KPC KC 223	40m	5.075858	100.997494	JKR KUALA KANGSAR
279	KPC KC 222	40m	5.075858	100.997494	JKR KUALA KANGSAR
280	KPC KC 221	40m	5.075284	100.997478	JKR KUALA KANGSAR
281	KPC KC 220	40m	5.074889	100.997378	JKR KUALA KANGSAR
282	KPC KC 219	40m	5.074889	100.997378	JKR KUALA KANGSAR
283	KPC KC 218	40m	5.074072	100.997382	JKR KUALA KANGSAR
284	KPC KC 217	40m	5.074072	100.997382	JKR KUALA KANGSAR
285	KPC KC 216	40m	5.074072	100.997382	JKR KUALA KANGSAR

No.	Point / Pole ID	Distance	Latitude	Longitude	Local Authority
286	KPC KC 215	40m	5.074072	100.997382	JKR KUALA KANGSAR
287	KPC KC 214	40m	5.073559	100.997336	JKR KUALA KANGSAR
288	KPC KC 213	40m	5.073368	100.997294	JKR KUALA KANGSAR
289	KPC KC 212	40m	5.072940	100.997305	JKR KUALA KANGSAR
290	NEW POLE	40m	5.072940	100.997305	JKR KUALA KANGSAR
291	KPC KC 210	40m	5.072170	100.997177	JKR KUALA KANGSAR
292	NEW POLE	40m	5.072170	100.997177	JKR KUALA KANGSAR
293	KPC KC 208	40m	5.071767	100.997235	JKR KUALA KANGSAR
294	KPC KC 207	40m	5.071767	100.997235	JKR KUALA KANGSAR
295	KPC KC 206	40m	5.071767	100.997235	JKR KUALA KANGSAR
296	KPC KC 205	40m	5.071028	100.997139	JKR KUALA KANGSAR
297	KPC KC 204	40m	5.071028	100.997139	JKR KUALA KANGSAR
298	KPC KC 203	40m	5.071028	100.997139	JKR KUALA KANGSAR
299	KPC KC 202	40m	5.071028	100.997139	JKR KUALA KANGSAR
300	KPC KC 201	40m	5.069827	100.997126	JKR KUALA KANGSAR
301	NEW POLE	40m	5.069889	100.997111	JKR KUALA KANGSAR
302	KPC KC 199	40m	5.069827	100.997126	JKR KUALA KANGSAR
303	KPC KC 198	40m	5.069827	100.997126	JKR KUALA KANGSAR
304	KPC KC 197	40m	5.069582	100.996990	JKR KUALA KANGSAR
305	KPC KC 196	40m	5.069392	100.996955	JKR KUALA KANGSAR
306	KPC KC 195	40m	5.068668	100.996977	JKR KUALA KANGSAR
307	KPC KC 194	40m	5.068668	100.996977	JKR KUALA KANGSAR
308	KPC KC 193	40m	5.068668	100.996977	JKR KUALA KANGSAR
309	NEW POLE	40m	5.069526	100.997184	JKR KUALA KANGSAR
310	KPC KC 191	40m	5.069526	100.997184	JKR KUALA KANGSAR
311	KPC KC 190	40m	5.068110	100.997479	JKR KUALA KANGSAR
312	KPC KC 189	40m	5.067662	100.997571	JKR KUALA KANGSAR
313	KPC KC 188	40m	5.066824	100.997254	JKR KUALA KANGSAR
314	KPC KC 187	40m	5.066824	100.997254	JKR KUALA KANGSAR
315	KPC KC 186	40m	5.066824	100.997254	JKR KUALA KANGSAR
316	KPC KC 185	40m	5.066824	100.997254	JKR KUALA KANGSAR
317	KPC KC 184	40m	5.066328	100.997132	JKR KUALA KANGSAR
318	KPC KC 183	40m	5.066180	100.997101	JKR KUALA KANGSAR
319	KPC KC 182	40m	5.065599	100.997178	JKR KUALA KANGSAR
320	KPC KC 181	40m	5.065599	100.997178	JKR KUALA KANGSAR
321	KPC KC 180	40m	5.065067	100.997090	JKR KUALA KANGSAR
322	KPC KC 179	40m	5.065067	100.997090	JKR KUALA KANGSAR
323	KPC KC 178	40m	5.064523	100.997008	JKR KUALA KANGSAR
324	KPC KC 177	40m	5.064523	100.997008	JKR KUALA KANGSAR
325	KPC KC 176	40m	5.064032	100.996934	JKR KUALA KANGSAR
326	NEW POLE	40m	5.063774	100.996876	JKR KUALA KANGSAR

No.	Point / Pole ID	Distance	Latitude	Longitude	Local Authority
327	KPC KC 174	40m	5.064032	100.996934	JKR KUALA KANGSAR
328	KPC KC 173	40m	5.063496	100.996853	JKR KUALA KANGSAR
329	KPC KC 172	40m	5.063321	100.996840	JKR KUALA KANGSAR
330	KPC KC 171	40m	5.062862	100.997014	JKR KUALA KANGSAR
331	KPC KC 170	40m	5.062862	100.997014	JKR KUALA KANGSAR
332	KPC KC 169	40m	5.062294	100.996909	JKR KUALA KANGSAR
333	KPC KC 168	40m	5.062294	100.996909	JKR KUALA KANGSAR
334	KPC KC 167	40m	5.062294	100.996909	JKR KUALA KANGSAR
335	KPC KC 166	40m	5.061429	100.996932	JKR KUALA KANGSAR
336	KPC KC 165	40m	5.061429	100.996932	JKR KUALA KANGSAR
337	KPC KC 164	40m	5.061027	100.996986	JKR KUALA KANGSAR
338	KPC KC 163	40m	5.060587	100.997023	JKR KUALA KANGSAR
339	KPC KC 162	40m	5.060790	100.997055	JKR KUALA KANGSAR
340	KPC KC 161	40m	5.060790	100.997055	JKR KUALA KANGSAR
341	KPC KC 160	40m	5.059982	100.996851	JKR KUALA KANGSAR
342	KPC KC 159	40m	5.059982	100.996851	JKR KUALA KANGSAR
343	NEW POLE	40m	5.059556	100.996418	JKR KUALA KANGSAR
344	KPC KC 157	40m	5.059556	100.996418	JKR KUALA KANGSAR
345	KPC KC 156	40m	5.059405	100.996778	JKR KUALA KANGSAR
346	KPC KC 155	40m	5.058572	100.996586	JKR KUALA KANGSAR
347	KPC KC 154	40m	5.058572	100.996586	JKR KUALA KANGSAR
348	KPC KC 153	40m	5.058572	100.996586	JKR KUALA KANGSAR
349	KPC KC 152	40m	5.058454	100.996530	JKR KUALA KANGSAR
350	KPC KC 151	40m	5.058219	100.996374	JKR KUALA KANGSAR
351	NEW POLE	40m	5.057344	100.996294	JKR KUALA KANGSAR
352	NEW POLE	40m	5.057344	100.996294	JKR KUALA KANGSAR
353	NEW POLE	40m	5.057344	100.996294	JKR KUALA KANGSAR
354	NEW POLE	40m	5.056802	100.996076	JKR KUALA KANGSAR
355	NEW POLE	40m	5.056802	100.996076	JKR KUALA KANGSAR
356	NEW POLE	40m	5.056678	100.996036	JKR KUALA KANGSAR
357	NEW POLE	40m	5.055738	100.995788	JKR KUALA KANGSAR
358	NEW POLE	40m	5.055738	100.995788	JKR KUALA KANGSAR
359	NEW POLE	40m	5.055499	100.995744	JKR KUALA KANGSAR
360	NEW POLE	40m	5.055201	100.995697	JKR KUALA KANGSAR
361	NEW POLE	40m	5.055201	100.995697	JKR KUALA KANGSAR
362	NEW POLE	40m	5.054309	100.995462	JKR KUALA KANGSAR
363	NEW POLE	40m	5.054309	100.995462	JKR KUALA KANGSAR
364	NEW POLE	40m	5.054770	100.995315	JKR KUALA KANGSAR
365	NEW POLE	40m	5.053477	100.994994	JKR KUALA KANGSAR
366	NEW POLE	40m	5.053477	100.994994	JKR KUALA KANGSAR
367	NEW POLE	40m	5.053282	100.994858	JKR KUALA KANGSAR

No.	Point / Pole ID	Distance	Latitude	Longitude	Local Authority
368	NEW POLE	40m	5.053282	100.994858	JKR KUALA KANGSAR
369	NEW POLE	40m	5.052565	100.994656	JKR KUALA KANGSAR
370	NEW POLE	40m	5.052084	100.994745	JKR KUALA KANGSAR
371	NEW POLE	40m	5.047471	100.993394	JKR KUALA KANGSAR
372	NEW POLE	40m	5.047471	100.993394	JKR KUALA KANGSAR
373	NEW POLE	40m	5.047471	100.993394	JKR KUALA KANGSAR
374	NEW POLE	40m	5.047041	100.993260	JKR KUALA KANGSAR
375	KTLC 36	40m	5.052379	100.994883	JKR KUALA KANGSAR
376	KTLC 35	40m	5.051675	100.994783	JKR KUALA KANGSAR
377	KTLC 34	40m	5.051675	100.994783	JKR KUALA KANGSAR
378	KTLC 33	40m	5.050939	100.994395	JKR KUALA KANGSAR
379	KTLC 32	40m	5.050754	100.994350	JKR KUALA KANGSAR
380	KTLC 31	40m	5.050754	100.994350	JKR KUALA KANGSAR
381	KTLC 30	40m	5.050754	100.994350	JKR KUALA KANGSAR
382	NEW POLE	40m	5.050754	100.994350	JKR KUALA KANGSAR
383	KTLC 28	40m	5.050003	100.994044	JKR KUALA KANGSAR
384	KTLC 27	40m	5.050003	100.994044	JKR KUALA KANGSAR
385	KTLC 26	40m	5.048767	100.993822	JKR KUALA KANGSAR
386	KTLC 25	40m	5.048767	100.993822	JKR KUALA KANGSAR
387	KTLC 24	40m	5.048767	100.993822	JKR KUALA KANGSAR
388	KTLC 23	40m	5.048430	100.993721	JKR KUALA KANGSAR
389	KTLC 22	40m	5.047949	100.993590	JKR KUALA KANGSAR
390	NEW POLE	40m	5.043567	100.987460	JKR KUALA KANGSAR
391	NEW POLE	40m	5.043567	100.987460	JKR KUALA KANGSAR
392	NEW POLE	40m	5.043567	100.987460	JKR KUALA KANGSAR
393	NEW POLE	40m	5.043567	100.987460	JKR KUALA KANGSAR
394	NEW POLE	40m	5.043567	100.987460	JKR KUALA KANGSAR
395	KTLC 16	40m	5.046796	100.993256	JKR KUALA KANGSAR
396	KTLC 15	40m	5.046499	100.993124	JKR KUALA KANGSAR
397	NEW POLE	40m	5.046123	100.993267	JKR KUALA KANGSAR
398	KTLC 13	40m	5.046123	100.993267	JKR KUALA KANGSAR
399	KTLC 12	40m	5.045143	100.992971	JKR KUALA KANGSAR
400	KTLC 11	40m	5.044714	100.992766	JKR KUALA KANGSAR
401	KTLC 10	40m	5.044714	100.992766	JKR KUALA KANGSAR
402	KTLC 09	40m	5.044623	100.992705	JKR KUALA KANGSAR
403	KTLC 08	40m	5.044230	100.992554	JKR KUALA KANGSAR
404	KTLC 07	40m	5.043983	100.992385	JKR KUALA KANGSAR
405	KTLC 06	40m	5.043402	100.992209	JKR KUALA KANGSAR
406	KTLC 05	40m	5.043402	100.992209	JKR KUALA KANGSAR
407	KTLC 04	40m	5.043356	100.992027	JKR KUALA KANGSAR
408	KTLC 03	40m	5.042935	100.991924	JKR KUALA KANGSAR

No.	Point / Pole ID	Distance	Latitude	Longitude	Local Authority
409	NEW POLE	40m	5.042202	100.991519	JKR KUALA KANGSAR
410	NEW POLE	40m	5.042945	100.991429	JKR KUALA KANGSAR
411	NEW POLE	40m	5.043061	100.991362	JKR KUALA KANGSAR
412	NEW POLE	40m	5.043297	100.991226	JKR KUALA KANGSAR
413	NEW POLE	40m	5.043508	100.990923	JKR KUALA KANGSAR
414	NEW POLE	40m	5.043500	100.990618	JKR KUALA KANGSAR
415	NEW POLE	40m	5.043493	100.990381	JKR KUALA KANGSAR
416	NEW POLE	40m	5.043481	100.990271	JKR KUALA KANGSAR
417	NEW POLE	40m	5.043450	100.990091	JKR KUALA KANGSAR
418	NEW POLE	40m	5.043415	100.989828	JKR KUALA KANGSAR
419	NEW POLE	40m	5.043406	100.989573	JKR KUALA KANGSAR
420	NEW POLE	40m	5.043383	100.989390	JKR KUALA KANGSAR
421	NEW POLE	40m	5.043364	100.989028	JKR KUALA KANGSAR
422	NEW POLE	40m	5.043364	100.989028	JKR KUALA KANGSAR
423	NEW POLE	40m	5.043270	100.988848	JKR KUALA KANGSAR
424	NEW POLE	40m	5.043270	100.988848	JKR KUALA KANGSAR
425	NEW POLE	40m	5.043218	100.988565	JKR KUALA KANGSAR
426	NEW POLE	40m	5.043462	100.988238	JKR KUALA KANGSAR
427	NEW POLE	40m	5.043396	100.988141	JKR KUALA KANGSAR
428	NEW POLE	40m	5.043442	100.988019	JKR KUALA KANGSAR
429	NEW POLE	40m	5.043395	100.987865	JKR KUALA KANGSAR
430	NEW POLE	40m	5.043447	100.987660	JKR KUALA KANGSAR
431	NEW POLE	40m	5.043567	100.987460	JKR KUALA KANGSAR
432	NEW POLE	40m	5.042202	100.991519	JKR KUALA KANGSAR
433	NEW POLE	40m	5.042935	100.991924	JKR KUALA KANGSAR
434	NO ID	40m	5.040823	100.990869	JKR KUALA KANGSAR
435	NEW POLE	40m	5.042202	100.991519	JKR KUALA KANGSAR
436	KLTB 03	40m	5.041795	100.991292	JKR KUALA KANGSAR
437	KLTB 04	40m	5.041755	100.991270	JKR KUALA KANGSAR
438	KLTB 05	40m	5.041589	100.991161	JKR KUALA KANGSAR
439	KLTB 06	40m	5.040823	100.990869	JKR KUALA KANGSAR
440	NEW POLE	40m	5.040823	100.990869	JKR KUALA KANGSAR
441	KLTB 08	40m	5.040758	100.990913	JKR KUALA KANGSAR
442	KLTB 09	40m	5.039976	100.990723	JKR KUALA KANGSAR
443	NEW POLE	40m	5.039976	100.990723	JKR KUALA KANGSAR
444	KLTB 11	40m	5.039890	100.990654	JKR KUALA KANGSAR
445	KLTB 12	40m	5.039278	100.990250	JKR KUALA KANGSAR
446	KLTB 13	40m	5.039278	100.990250	JKR KUALA KANGSAR
447	KLTB 14	40m	5.038801	100.990122	JKR KUALA KANGSAR
448	KLTB 15	40m	5.038801	100.990122	JKR KUALA KANGSAR
449	KLTB 16	40m	5.038801	100.990122	JKR KUALA KANGSAR

No.	Point / Pole ID	Distance	Latitude	Longitude	Local Authority
450	KLTB 17	40m	5.038241	100.989744	JKR KUALA KANGSAR
451	KLTB 18	40m	5.037810	100.989590	JKR KUALA KANGSAR
452	KLTB 19	40m	5.037440	100.989411	JKR KUALA KANGSAR
453	KLTB 20	40m	5.037440	100.989411	JKR KUALA KANGSAR
454	KLTB 21	40m	5.037440	100.989411	JKR KUALA KANGSAR
455	NEW POLE	40m	5.037440	100.989411	JKR KUALA KANGSAR
456	KLTB 23	40m	5.037043	100.989219	JKR KUALA KANGSAR
457	KLTB 24	40m	5.036309	100.989037	JKR KUALA KANGSAR
458	KLTB 25	40m	5.035982	100.988823	JKR KUALA KANGSAR
459	KLTB 26	40m	5.035982	100.988823	JKR KUALA KANGSAR
460	KLTB 27	40m	5.035982	100.988823	JKR KUALA KANGSAR
461	KLTB 28	40m	5.035982	100.988823	JKR KUALA KANGSAR
462	NEW POLE	40m	5.035367	100.989137	JKR KUALA KANGSAR
463	KLTB 30	40m	5.034784	100.989179	JKR KUALA KANGSAR
464	KLTB 31	40m	5.034784	100.989179	JKR KUALA KANGSAR
465	KLTB 32	40m	5.034594	100.989186	JKR KUALA KANGSAR
466	KLTB 33	40m	5.034594	100.989186	JKR KUALA KANGSAR
467	KLTB 34	40m	5.033949	100.989234	JKR KUALA KANGSAR
468	KLTB 35	40m	5.033949	100.989234	JKR KUALA KANGSAR
469	NEW POLE	40m	5.033405	100.989186	JKR KUALA KANGSAR
470	KLTB 37	40m	5.033405	100.989186	JKR KUALA KANGSAR
471	KLTB 38	40m	5.033405	100.989186	JKR KUALA KANGSAR
472	KLTB 39	40m	5.033027	100.989363	JKR KUALA KANGSAR
473	KLTB 40	40m	5.032745	100.989466	JKR KUALA KANGSAR
474	KLTB 41	40m	5.032613	100.989543	JKR KUALA KANGSAR
475	KLTB 42	40m	5.032099	100.989467	JKR KUALA KANGSAR
476	KLTB 43	40m	5.031914	100.989499	JKR KUALA KANGSAR
477	KLTB 44	40m	5.031638	100.989548	JKR KUALA KANGSAR
478	KLTB 45	40m	5.031375	100.989645	JKR KUALA KANGSAR
479	KLTB 46	40m	5.031088	100.989710	JKR KUALA KANGSAR
480	KLTB 47	40m	5.031071	100.989915	JKR KUALA KANGSAR
481	KLTB 48	40m	5.030634	100.990074	JKR KUALA KANGSAR
482	KB BN 1	40m	5.028864	100.989526	JKR KUALA KANGSAR
483	NEW POLE	40m	5.028864	100.989526	JKR KUALA KANGSAR
484	KB BN 3	40m	5.028864	100.989526	JKR KUALA KANGSAR
485	NEW POLE	40m	5.028864	100.989526	JKR KUALA KANGSAR
486	KB BN 5	40m	5.028864	100.989526	JKR KUALA KANGSAR
487	KB BN 6	40m	5.028864	100.989526	JKR KUALA KANGSAR
488	KB BN 7	40m	5.029043	100.989417	JKR KUALA KANGSAR
489	KB BN 8	40m	5.029043	100.989417	JKR KUALA KANGSAR
490	KB BN 9	40m	5.029043	100.989417	JKR KUALA KANGSAR

No.	Point / Pole ID	Distance	Latitude	Longitude	Local Authority
491	KB BN 10/1	40m	5.027889	100.990309	JKR KUALA KANGSAR
492	KB BN 11/1	40m	5.026131	100.990962	JKR KUALA KANGSAR
493	KB BN 12/1	40m	5.025890	100.990828	JKR KUALA KANGSAR
494	KB BN 13/1	40m	5.025890	100.990828	JKR KUALA KANGSAR
495	NEW POLE	40m	5.025890	100.990828	JKR KUALA KANGSAR
496	KB BN 15/1	40m	5.025498	100.991097	JKR KUALA KANGSAR
497	KB BN 16/1	40m	5.025498	100.991097	JKR KUALA KANGSAR
498	KB BN 17/1	40m	5.025498	100.991097	JKR KUALA KANGSAR
499	KB DL 1/1	40m	5.026705	100.992842	JKR KUALA KANGSAR
500	NEW POLE	40m	5.026705	100.992842	MAJLIS DAERAH
501	NEW POLE	40m	5.026705	100.992842	MAJLIS DAERAH
502	NEW POLE	40m	5.026705	100.992842	MAJLIS DAERAH
503	NEW POLE	40m	5.026705	100.992842	MAJLIS DAERAH
504	NEW POLE	40m	5.026705	100.992842	MAJLIS DAERAH
505	NEW POLE	40m	5.022436	100.990635	MAJLIS DAERAH
506	NEW POLE	40m	5.022436	100.990635	MAJLIS DAERAH
507	NEW POLE	40m	5.022436	100.990635	MAJLIS DAERAH
508	NEW POLE	40m	5.022436	100.990635	MAJLIS DAERAH
509	NEW POLE	40m	5.023214	100.989729	MAJLIS DAERAH
510	NEW POLE	40m	5.023214	100.989729	MAJLIS DAERAH
511	NEW POLE	40m	5.023214	100.989729	MAJLIS DAERAH
512	NEW POLE	40m	5.022833	100.989130	MAJLIS DAERAH
513	NEW POLE	40m	5.022833	100.989130	MAJLIS DAERAH
514	NEW POLE	40m	5.021934	100.988917	MAJLIS DAERAH
515	NEW POLE	40m	5.022305	100.988804	MAJLIS DAERAH
516	NEW POLE	40m	5.022305	100.988804	MAJLIS DAERAH
517	NEW POLE	40m	5.021686	100.988417	MAJLIS DAERAH
518	NEW POLE	40m	5.021686	100.988417	MAJLIS DAERAH
519	NEW POLE	40m	5.021686	100.988417	MAJLIS DAERAH
520	NEW POLE	40m	5.021686	100.988417	MAJLIS DAERAH
521	NEW POLE	40m	5.019474	100.987705	MAJLIS DAERAH
522	NEW POLE	40m	5.027921	100.992185	MAJLIS DAERAH
523	NEW POLE	40m	5.022118	100.987427	MAJLIS DAERAH
524	NEW POLE	40m	5.022118	100.987427	MAJLIS DAERAH
525	NEW POLE	40m	5.020821	100.987381	MAJLIS DAERAH
526	NEW POLE	40m	5.022118	100.987427	MAJLIS DAERAH
527	NEW POLE	40m	5.020690	100.987429	MAJLIS DAERAH
528	NEW POLE	40m	5.021384	100.987434	MAJLIS DAERAH
529	NEW POLE	40m	5.021384	100.987434	MAJLIS DAERAH
530	NEW POLE	40m	5.020324	100.987286	MAJLIS DAERAH
531	NEW POLE	40m	5.020384	100.987377	MAJLIS DAERAH

CONTRACT FOR SUPPLY, INSTALLATION AND COMMISSIONING OF FTTX NETWORK INFRASTRUCTURE FOR ALLO TECHNOLOGY SDN BHD - POP 2 PROJECT (TP E-SIDE) - PMU CEND (3 POPS)

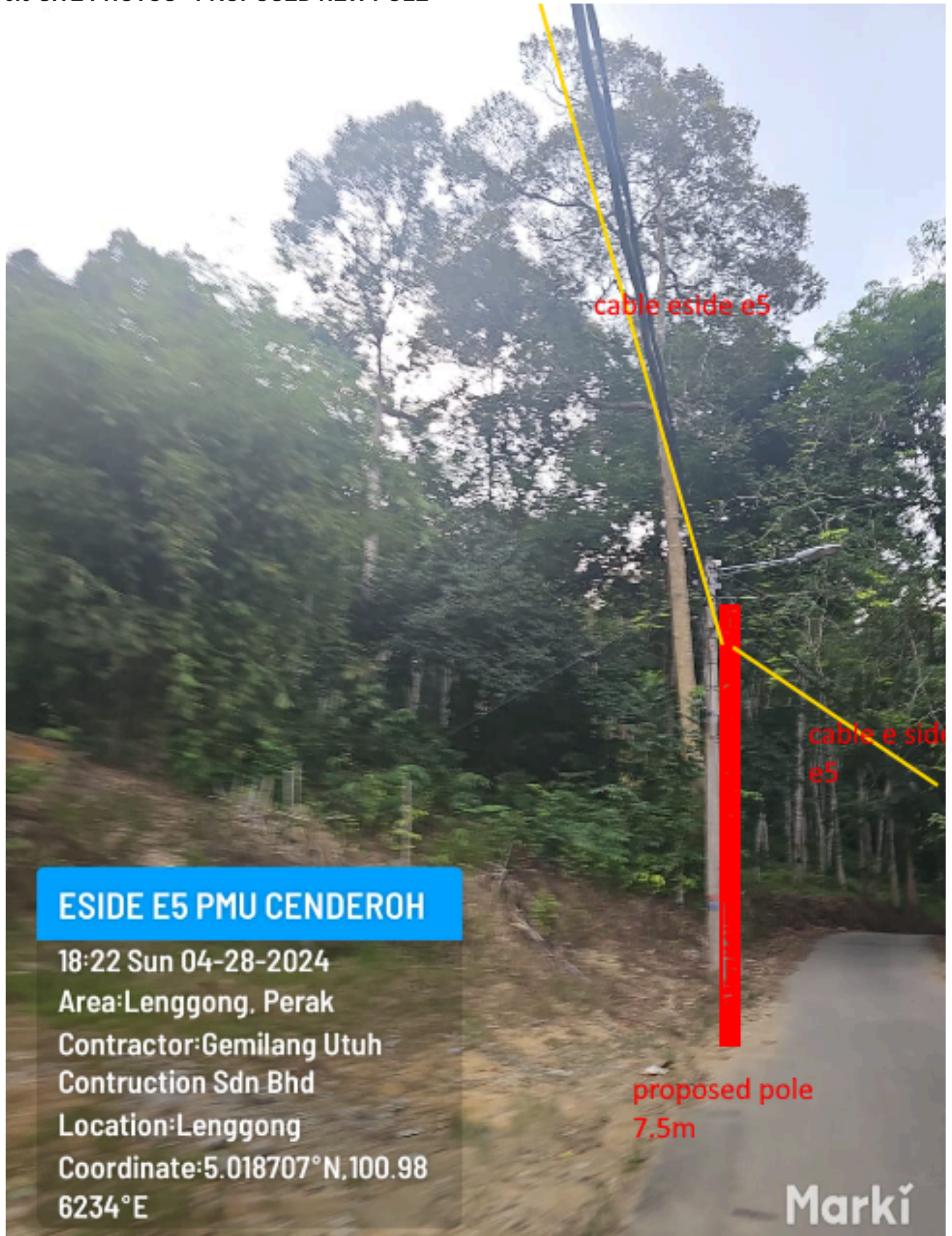
No.	Point / Pole ID	Distance	Latitude	Longitude	Local Authority
532	NEW POLE	40m	5.020397	100.986897	MAJLIS DAERAH
533	NEW POLE	40m	5.019450	100.986416	MAJLIS DAERAH
534	NEW POLE	40m	5.018991	100.986823	MAJLIS DAERAH
535	NEW POLE	40m	5.019450	100.986416	MAJLIS DAERAH
536	NEW POLE	40m	5.017905	100.985610	MAJLIS DAERAH
537	NEW POLE	40m	5.018872	100.986198	MAJLIS DAERAH
538	NEW POLE	40m	5.018894	100.986564	MAJLIS DAERAH
539	NEW POLE	40m	5.018351	100.986318	MAJLIS DAERAH
540	NEW POLE	40m	5.018296	100.986215	MAJLIS DAERAH
541	NEW POLE	40m	5.018178	100.986057	MAJLIS DAERAH
542	NEW POLE	40m	5.018296	100.986215	MAJLIS DAERAH
543	NEW POLE	40m	5.018349	100.985957	MAJLIS DAERAH
544	NEW POLE	40m	5.017624	100.985790	MAJLIS DAERAH
545	NEW POLE	40m	5.017627	100.985434	MAJLIS DAERAH
546	NEW POLE	40m	5.017441	100.985335	MAJLIS DAERAH
547	NEW POLE	40m	5.017249	100.985259	MAJLIS DAERAH
548	NEW POLE	40m	5.017249	100.985259	MAJLIS DAERAH
549	NEW POLE	40m	5.017013	100.984791	MAJLIS DAERAH
550	NEW POLE	40m	5.017169	100.984307	MAJLIS DAERAH
551	NEW POLE	40m	5.017013	100.984791	MAJLIS DAERAH
552	NEW POLE	40m	5.016552	100.984139	MAJLIS DAERAH
553	NEW POLE	40m	5.017133	100.984606	MAJLIS DAERAH
554	NEW POLE	40m	5.016647	100.983564	MAJLIS DAERAH
555	NEW POLE	40m	5.016647	100.983564	MAJLIS DAERAH
556	NEW POLE	40m	5.016706	100.983700	MAJLIS DAERAH
557	NEW POLE	40m	5.016580	100.983922	MAJLIS DAERAH
558	NEW POLE	40m	5.016451	100.983254	MAJLIS DAERAH
559	NEW POLE	40m	5.016116	100.982762	MAJLIS DAERAH
560	NEW POLE	40m	5.016116	100.982762	MAJLIS DAERAH
561	NEW POLE	40m	5.015740	100.982605	MAJLIS DAERAH
562	NEW POLE	40m	5.015626	100.982394	MAJLIS DAERAH
563	NEW POLE	40m	5.015564	100.982355	MAJLIS DAERAH
564	NEW POLE	40m	5.026705	100.992842	MAJLIS DAERAH
565	NEW POLE	40m	5.026705	100.992842	MAJLIS DAERAH
566	NEW POLE	40m	5.026705	100.992842	MAJLIS DAERAH
567	NEW POLE	40m	5.026705	100.992842	MAJLIS DAERAH
568	NEW POLE	40m	5.026705	100.992842	MAJLIS DAERAH
569	NEW POLE	40m	5.022436	100.990635	MAJLIS DAERAH
570	NEW POLE	40m	5.022436	100.990635	MAJLIS DAERAH
571	NEW POLE	40m	5.022436	100.990635	MAJLIS DAERAH
572	NEW POLE	40m	5.022436	100.990635	MAJLIS DAERAH

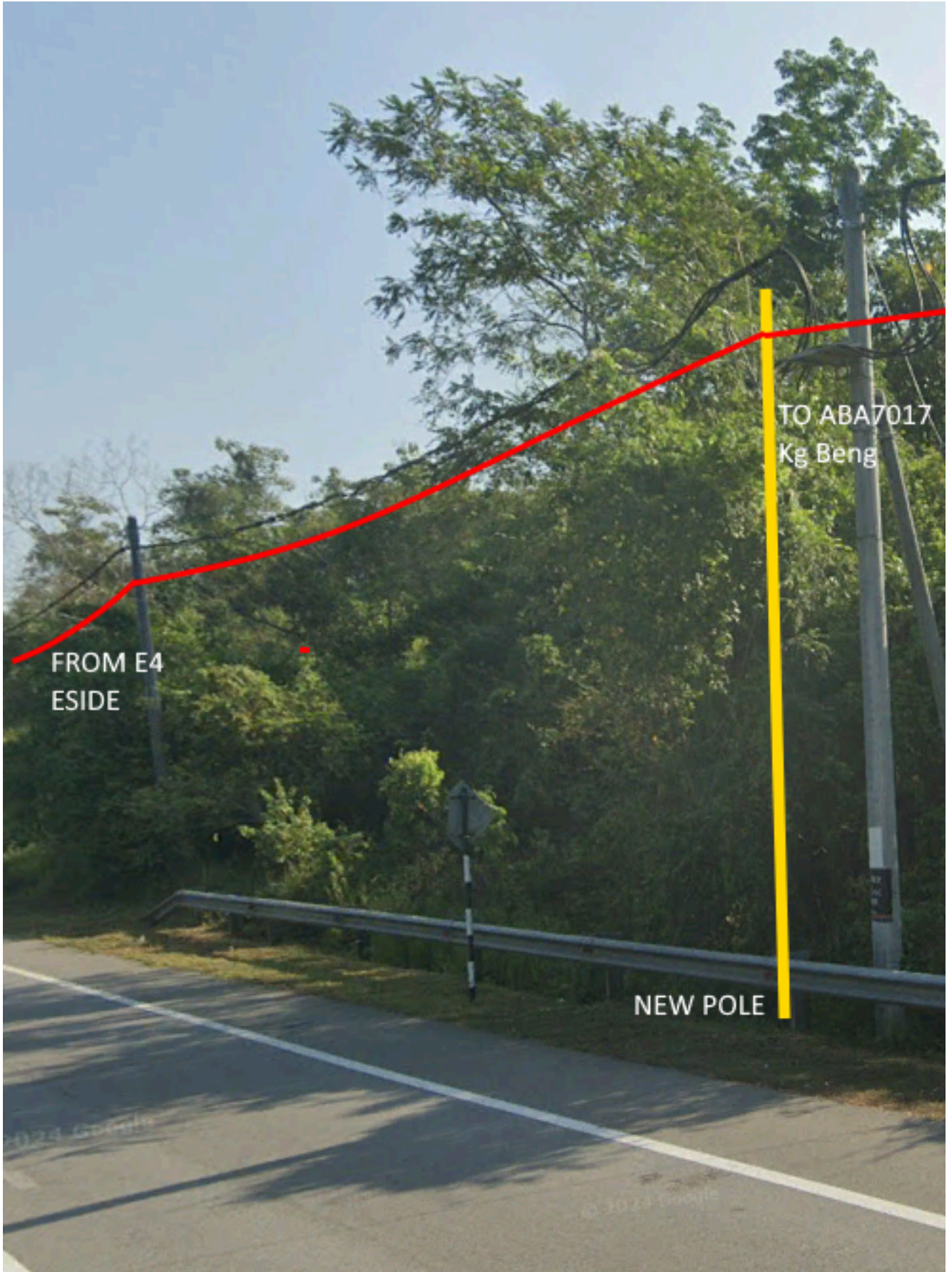
No.	Point / Pole ID	Distance	Latitude	Longitude	Local Authority
573	NEW POLE	40m	5.023214	100.989729	MAJLIS DAERAH
574	NEW POLE	40m	5.023214	100.989729	MAJLIS DAERAH
575	NEW POLE	40m	5.023214	100.989729	MAJLIS DAERAH
576	NEW POLE	40m	5.022833	100.989130	MAJLIS DAERAH
577	NEW POLE	40m	5.022833	100.989130	MAJLIS DAERAH
578	NEW POLE	40m	5.021934	100.988917	MAJLIS DAERAH
579	NEW POLE	40m	5.022305	100.988804	MAJLIS DAERAH
580	NEW POLE	40m	5.022305	100.988804	MAJLIS DAERAH
581	NEW POLE	40m	5.021686	100.988417	MAJLIS DAERAH
582	NEW POLE	40m	5.021686	100.988417	MAJLIS DAERAH
583	NEW POLE	40m	5.021686	100.988417	MAJLIS DAERAH
584	NEW POLE	40m	5.021686	100.988417	MAJLIS DAERAH
585	NEW POLE	40m	5.019474	100.987705	MAJLIS DAERAH
586	NEW POLE	40m	5.027921	100.992185	MAJLIS DAERAH
587	NEW POLE	40m	5.022118	100.987427	MAJLIS DAERAH
588	NEW POLE	40m	5.022118	100.987427	MAJLIS DAERAH
589	NEW POLE	40m	5.020821	100.987381	MAJLIS DAERAH
590	NEW POLE	40m	5.022118	100.987427	MAJLIS DAERAH
591	NEW POLE	40m	5.020690	100.987429	MAJLIS DAERAH
592	NEW POLE	40m	5.021384	100.987434	MAJLIS DAERAH
593	NEW POLE	40m	5.021384	100.987434	MAJLIS DAERAH
594	NEW POLE	40m	5.020324	100.987286	MAJLIS DAERAH
595	NEW POLE	40m	5.020384	100.987377	MAJLIS DAERAH
596	NEW POLE	40m	5.020397	100.986897	MAJLIS DAERAH
597	NEW POLE	40m	5.019450	100.986416	MAJLIS DAERAH
598	NEW POLE	40m	5.018991	100.986823	MAJLIS DAERAH
599	NEW POLE	40m	5.019450	100.986416	MAJLIS DAERAH
600	NEW POLE	40m	5.017905	100.985610	MAJLIS DAERAH
601	NEW POLE	40m	5.018872	100.986198	MAJLIS DAERAH
602	NEW POLE	40m	5.018894	100.986564	MAJLIS DAERAH
603	NEW POLE	40m	5.018351	100.986318	MAJLIS DAERAH
604	NEW POLE	40m	5.018296	100.986215	MAJLIS DAERAH
605	NEW POLE	40m	5.018178	100.986057	MAJLIS DAERAH
606	NEW POLE	40m	5.018296	100.986215	MAJLIS DAERAH
607	NEW POLE	40m	5.018349	100.985957	MAJLIS DAERAH
608	NEW POLE	40m	5.017624	100.985790	MAJLIS DAERAH
609	NEW POLE	40m	5.017627	100.985434	MAJLIS DAERAH
610	NEW POLE	40m	5.017441	100.985335	MAJLIS DAERAH
611	NEW POLE	40m	5.017249	100.985259	MAJLIS DAERAH
612	NEW POLE	40m	5.017249	100.985259	MAJLIS DAERAH
613	NEW POLE	40m	5.017013	100.984791	MAJLIS DAERAH

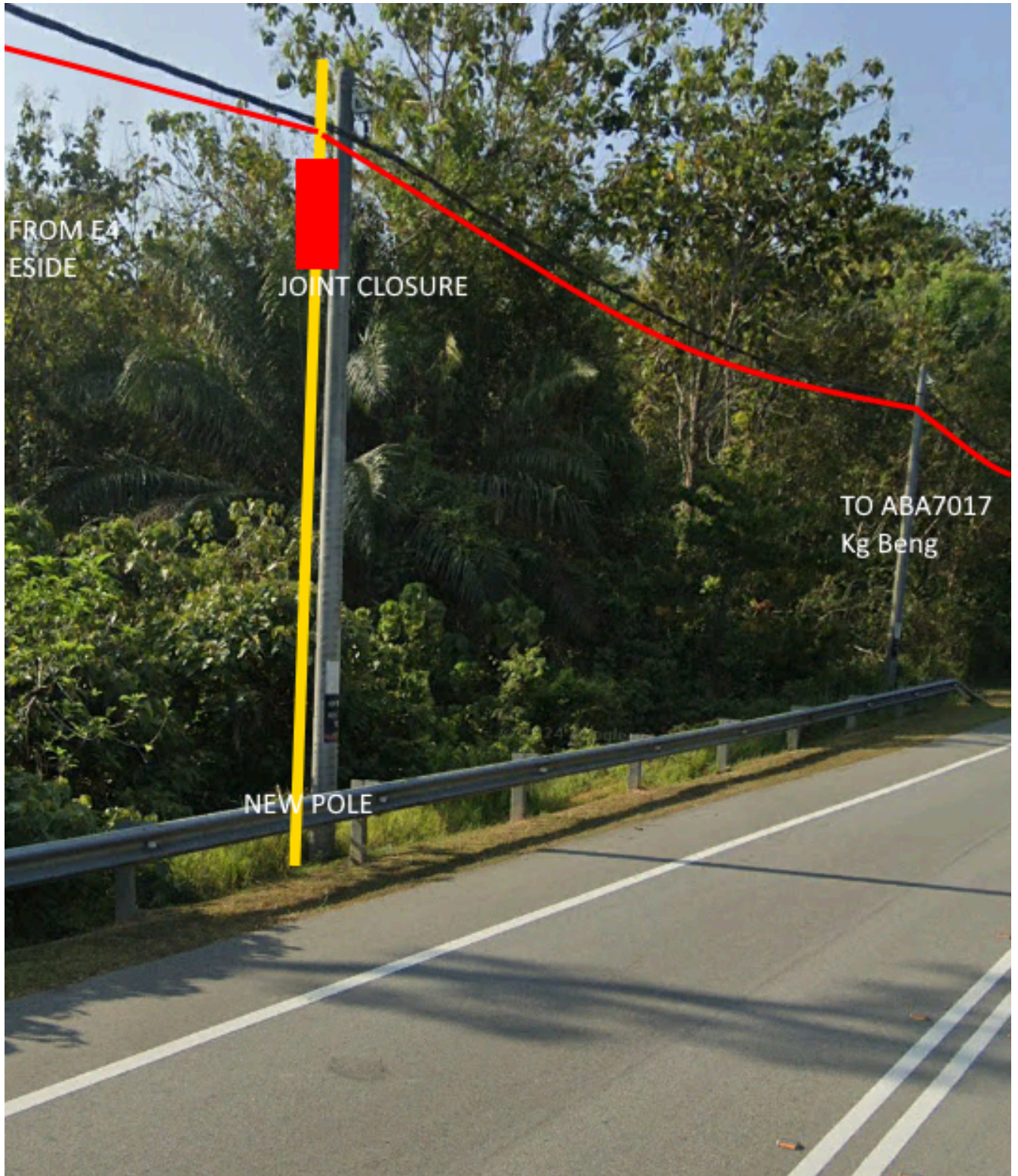
No.	Point / Pole ID	Distance	Latitude	Longitude	Local Authority
614	NEW POLE	40m	5.017169	100.984307	MAJLIS DAERAH
615	NEW POLE	40m	5.017013	100.984791	MAJLIS DAERAH
616	NEW POLE	40m	5.016552	100.984139	MAJLIS DAERAH
617	NEW POLE	40m	5.017133	100.984606	MAJLIS DAERAH
618	NEW POLE	40m	5.016647	100.983564	MAJLIS DAERAH
619	NEW POLE	40m	5.016647	100.983564	MAJLIS DAERAH
620	NEW POLE	40m	5.016706	100.983700	MAJLIS DAERAH
621	NEW POLE	40m	5.016580	100.983922	MAJLIS DAERAH
622	NEW POLE	40m	5.016451	100.983254	MAJLIS DAERAH
623	NEW POLE	40m	5.016116	100.982762	MAJLIS DAERAH
624	NEW POLE	40m	5.016116	100.982762	MAJLIS DAERAH
625	NEW POLE	40m	5.015740	100.982605	MAJLIS DAERAH
626	NEW POLE	40m	5.015626	100.982394	MAJLIS DAERAH
627	NEW POLE	40m	5.015564	100.982355	MAJLIS DAERAH
628	NEW POLE	40m	5.026705	100.992842	MAJLIS DAERAH
629	NEW POLE	40m	5.026705	100.992842	MAJLIS DAERAH
630	NEW POLE	40m	5.026705	100.992842	MAJLIS DAERAH
631	NEW POLE	40m	5.026705	100.992842	MAJLIS DAERAH
632	NEW POLE	40m	5.026705	100.992842	MAJLIS DAERAH
633	NEW POLE	40m	5.022436	100.990635	MAJLIS DAERAH
634	NEW POLE	40m	5.022436	100.990635	MAJLIS DAERAH
635	NEW POLE	40m	5.022436	100.990635	MAJLIS DAERAH
636	NEW POLE	40m	5.022436	100.990635	MAJLIS DAERAH
637	NEW POLE	40m	5.023214	100.989729	MAJLIS DAERAH
638	NEW POLE	40m	5.023214	100.989729	MAJLIS DAERAH
639	NEW POLE	40m	5.023214	100.989729	MAJLIS DAERAH
640	NEW POLE	40m	5.022833	100.989130	MAJLIS DAERAH
641	NEW POLE	40m	5.022833	100.989130	MAJLIS DAERAH
642	NEW POLE	40m	5.021934	100.988917	MAJLIS DAERAH
643	NEW POLE	40m	5.022305	100.988804	MAJLIS DAERAH
644	NEW POLE	40m	5.022305	100.988804	MAJLIS DAERAH
645	NEW POLE	40m	5.021686	100.988417	MAJLIS DAERAH
646	NEW POLE	40m	5.021686	100.988417	MAJLIS DAERAH
647	NEW POLE	40m	5.021686	100.988417	MAJLIS DAERAH
648	NEW POLE	40m	5.021686	100.988417	MAJLIS DAERAH
649	NEW POLE	40m	5.019474	100.987705	MAJLIS DAERAH
650	NEW POLE	40m	5.027921	100.992185	MAJLIS DAERAH
651	NEW POLE	40m	5.022118	100.987427	MAJLIS DAERAH
652	NEW POLE	40m	5.022118	100.987427	MAJLIS DAERAH
653	NEW POLE	40m	5.020821	100.987381	MAJLIS DAERAH
654	NEW POLE	40m	5.022118	100.987427	MAJLIS DAERAH

No.	Point / Pole ID	Distance	Latitude	Longitude	Local Authority
655	NEW POLE	40m	5.020690	100.987429	MAJLIS DAERAH
651	NEW POLE	40m	5.021384	100.987434	MAJLIS DAERAH
652	NEW POLE	40m	5.021384	100.987434	MAJLIS DAERAH
653	NEW POLE	40m	5.020324	100.987286	MAJLIS DAERAH
654	NEW POLE	40m	5.020384	100.987377	MAJLIS DAERAH
655	NEW POLE	40m	5.020397	100.986897	MAJLIS DAERAH
656	NEW POLE	40m	5.019450	100.986416	MAJLIS DAERAH
657	NEW POLE	40m	5.018991	100.986823	MAJLIS DAERAH
658	NEW POLE	40m	5.019450	100.986416	MAJLIS DAERAH
659	NEW POLE	40m	5.017905	100.985610	MAJLIS DAERAH
660	NEW POLE	40m	5.018872	100.986198	MAJLIS DAERAH
661	NEW POLE	40m	5.018894	100.986564	MAJLIS DAERAH
662	NEW POLE	40m	5.018351	100.986318	MAJLIS DAERAH
663	NEW POLE	40m	5.018296	100.986215	MAJLIS DAERAH
664	NEW POLE	40m	5.018178	100.986057	MAJLIS DAERAH
665	NEW POLE	40m	5.018296	100.986215	MAJLIS DAERAH
666	NEW POLE	40m	5.018349	100.985957	MAJLIS DAERAH
667	NEW POLE	40m	5.017624	100.985790	MAJLIS DAERAH
668	NEW POLE	40m	5.017627	100.985434	MAJLIS DAERAH
669	NEW POLE	40m	5.017441	100.985335	MAJLIS DAERAH
670	NEW POLE	40m	5.017249	100.985259	MAJLIS DAERAH
671	NEW POLE	40m	5.017249	100.985259	MAJLIS DAERAH
672	NEW POLE	40m	5.017013	100.984791	MAJLIS DAERAH
673	NEW POLE	40m	5.017169	100.984307	MAJLIS DAERAH
674	NEW POLE	40m	5.017013	100.984791	MAJLIS DAERAH

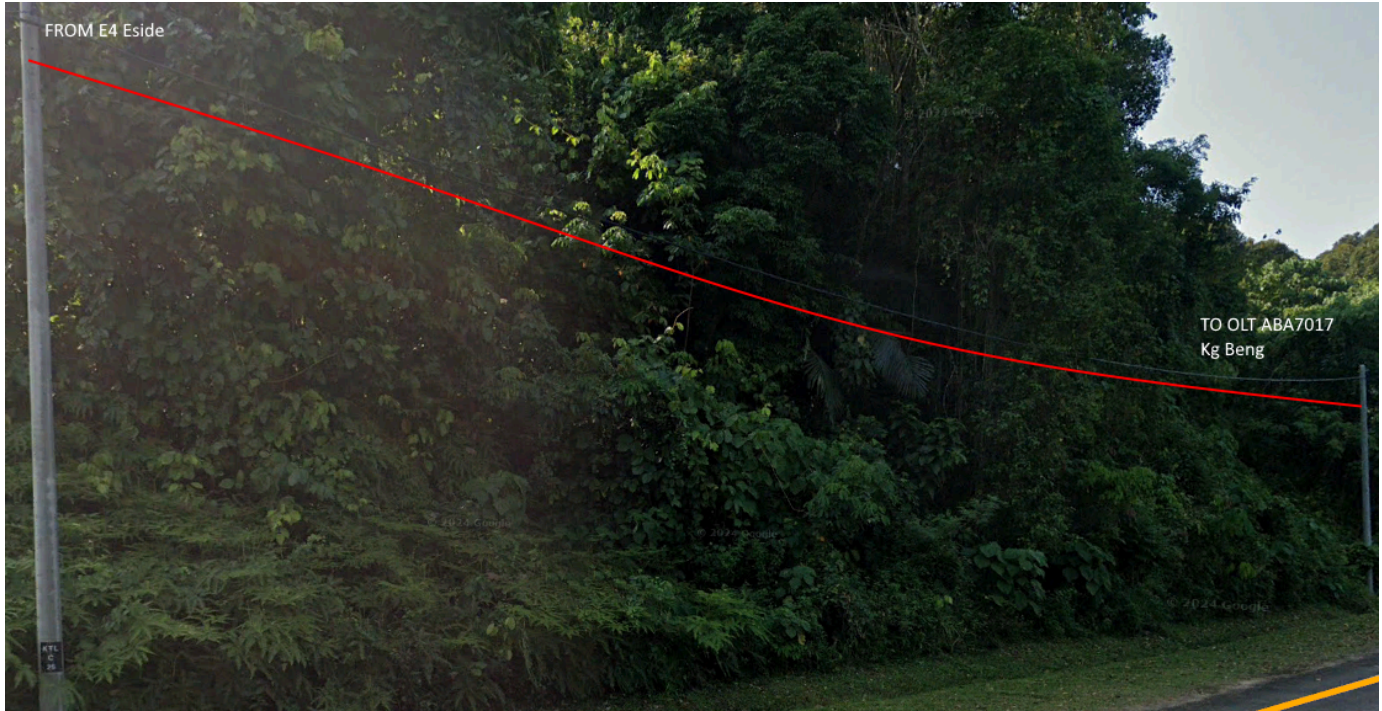
6.0 SITE PHOTOS - PROPOSED NEW POLE







7.0 SITE PHOTOS - EXISTING TNB POLE (ROUTE)



8.0 THIRD PARTIES DEPENDENCIES

No.	Local Council/ Authority	Remark
1	JKR Kuala Kangsar	
2	JKR Perak	
3	Majlis Daerah Lenggong	