

## E/SIDE POI SRVR – Technical Proposal Cluster 2

Company Name	: JALURLEBAR PRIMA SDN BHD
Company Address	: 22, Jalan Klebang Indah 8, Medan Klebang Indah, 31200 Chemor, Perak
Prepared By	: Faizal bin Dolmat
Date	: 28/01/2025



POINT A

POINT B

### Starting Point

Site / Boundary Name	: Sekolah Kebangsaan Sungai Behrang
Address	: Jalan L, Felda Sungai Behrang, 35820 Slim River, Perak
District	: Slim River, Perak
Postcode	: 35820
State	: Perak
GPS Coordinate	: 3.779742562, 101.4594925
LRD	: A

### End Point

Site / Boundary Name	: Sekolah Jenis Kebangsaan (Tamil) Trolak
Address	: Pekan Trolak 35700 Trolak, Perak
District	: Sungkai
Postcode	: 35700
State	: Perak
GPS Coordinate	: 3.891519047, 101.3753828
LRD	: B

### Work Summary

No	Proposed Distance and Method	Unit	Qty
1	Horizontal Directional Drilling (HDD)	m	<b>140</b>
2	Carriage Way Open trench (CW)	m	<b>150</b>
3	Grass Verge Open Trenching (GV)	m	<b>0</b>
4	Micro trenching (MT)	m	<b>0</b>
	Total		<b>0</b>

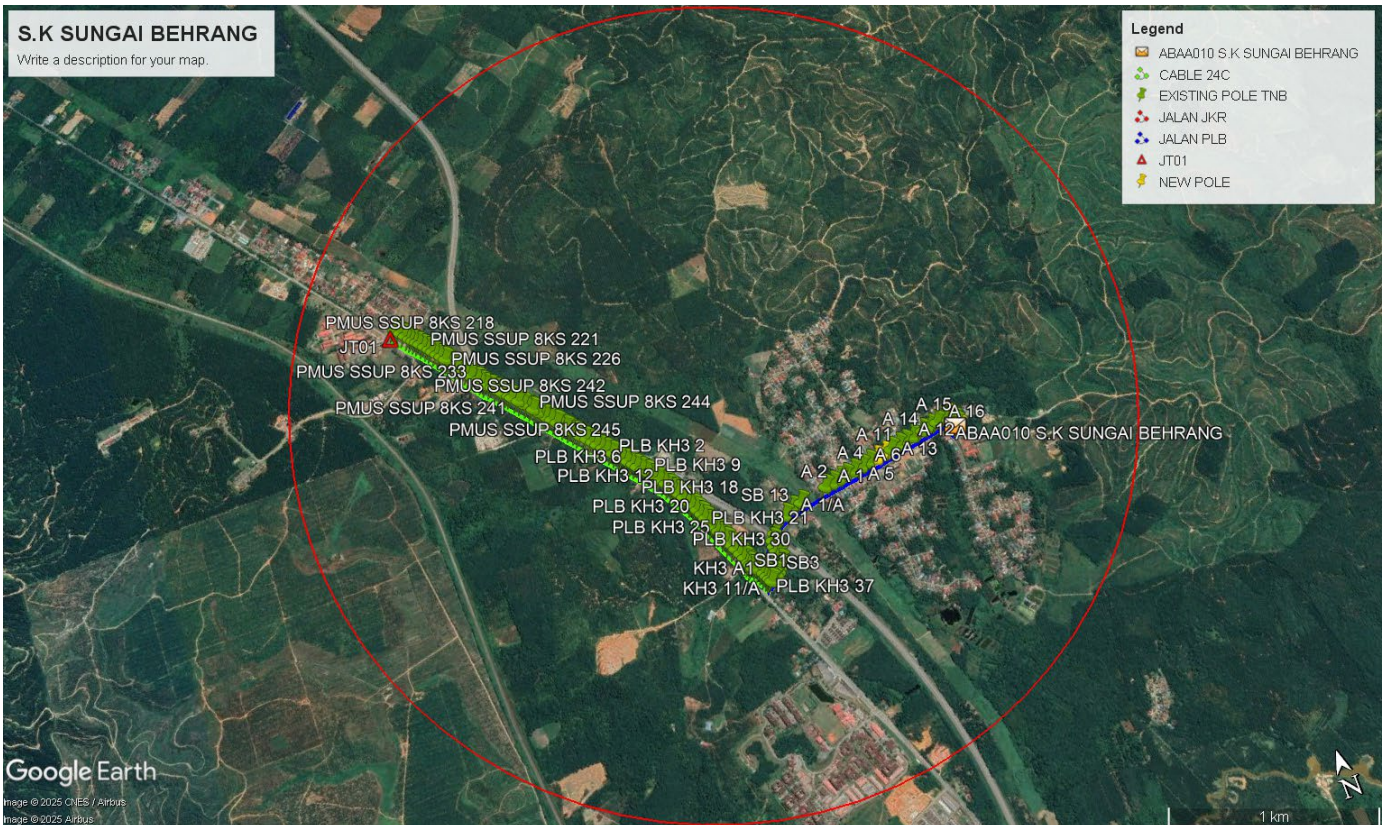
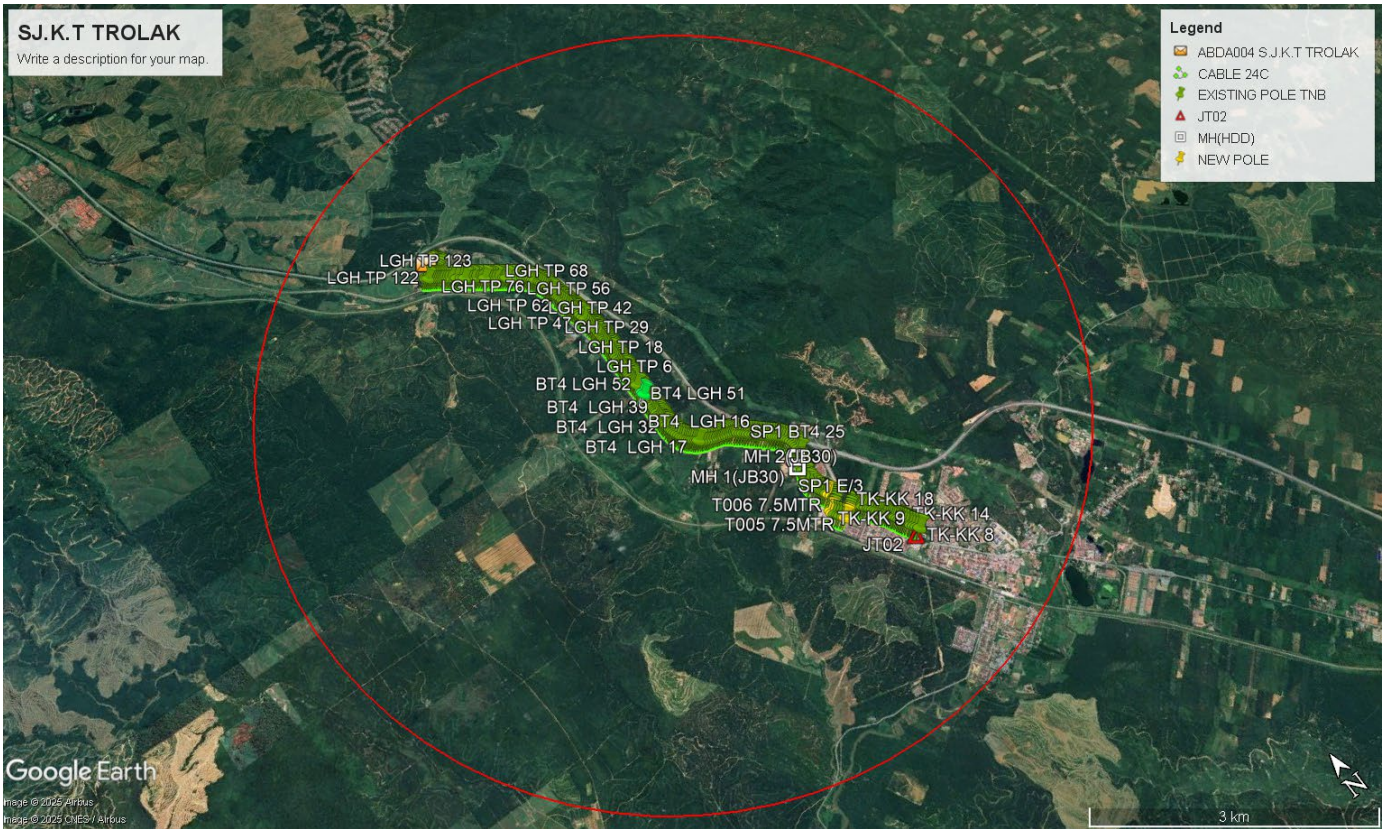
	Other Information	Unit	Qty
1	Proposed Manhole	EA	<b>4</b>
2	Proposed Pole	EA	<b>12</b>
3	Joint Closure	EA	<b>7</b>
4	Estimated time required for completion	days	<b>60</b>

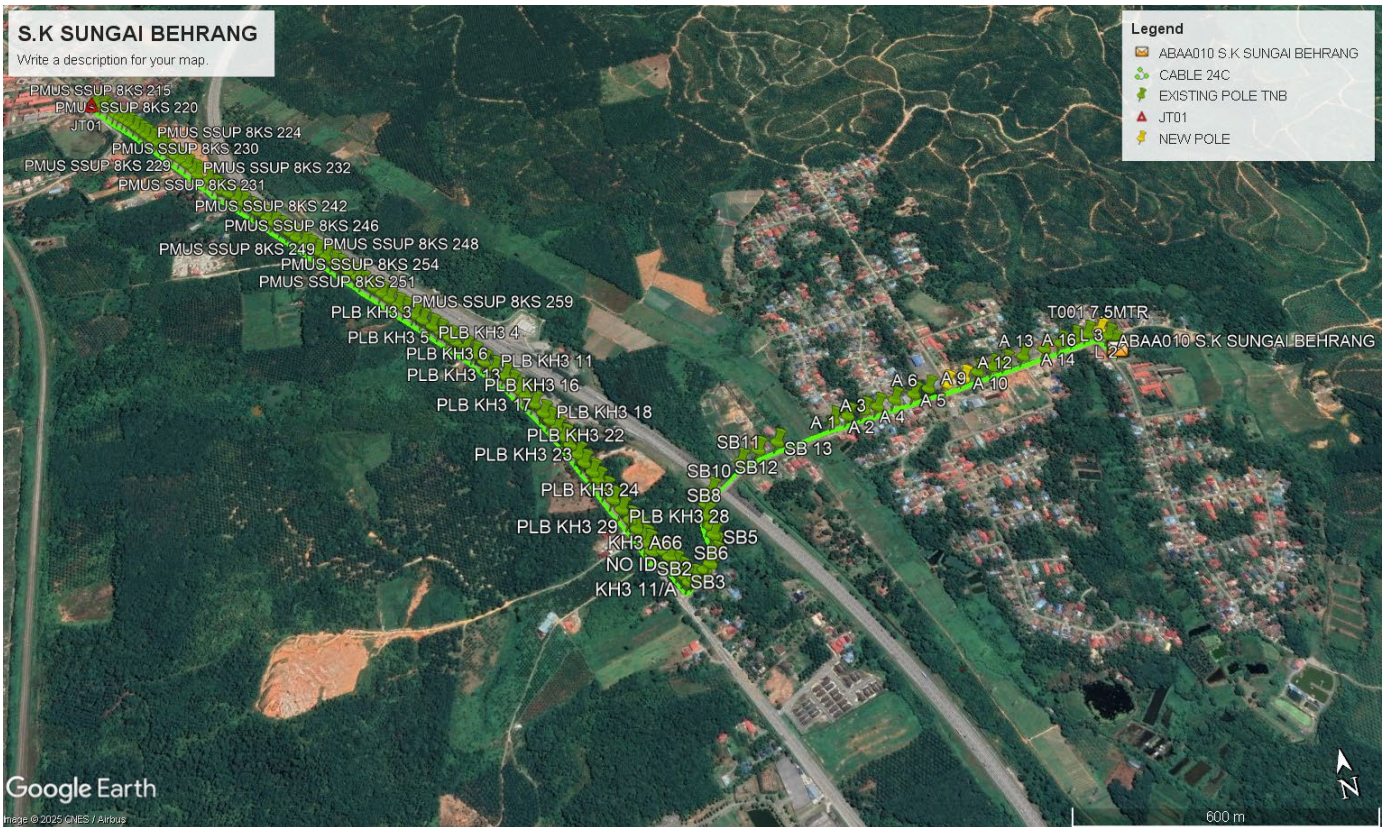
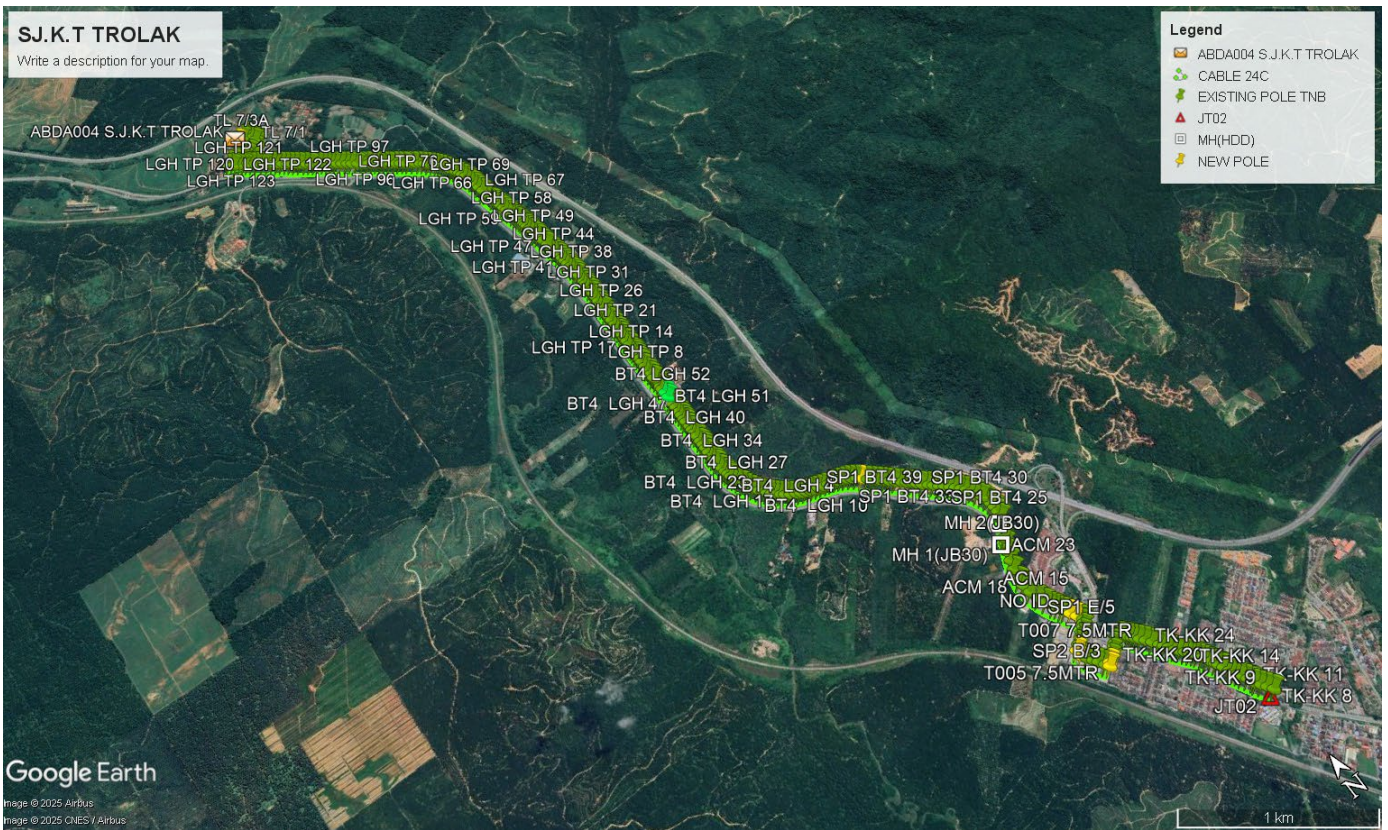
### Local Authority Summary

#### 1. Daerah Slim River

Bil	Items	Owner	Quantity	Distance
1	HDD	JKR	1	140
		Majlis	-	-
		Estate / Private Land	-	-
2	New Pole	JKR	3pcs	105
		Majlis	4pcs	120
		Estate / Private Land	5pcs	150
3	Existing TNB Pole	JKR	333pcs	11,250
		Majlis	19pcs	665
		Estate / Private Land	52pcs	1,665
Total				14,095m

**Site Plan – KMZ (Overview site area)**







**PROPOSED NEW GI PIPE FOR CROSSING FLYOVER HIGHWAY**



**PROPOSED OPENCUT**



**Proposed New Pole Lat & Long Table**

**(S.K. SUNGAI BEHRANG)**

NO	POLE ID	TO POLE	DISTANCE	LATITUDE	LONGITUDE	LOCAL AUTHORITY
1	T000	L 3	30	3.780253382	101.4586437	PLB
2	L3	L2	30	3.780460037	101.4585959	PLB
3	L2	T001	30	3.780681649	101.4585521	PLB
4	T001	A 16	35	3.780882136	101.4584344	PLB
5	A 16	A 15	30	3.780840517	101.4581068	PLB
6	A15	A14	30	3.780781387	101.4577682	PLB
7	A 14	A13	30	3.780712408	101.4574108	PLB
8	A 13	A 12	30	3.780641124	101.4569958	PLB
9	A 12	A 11	30	3.780538683	101.4564488	PLB
10	A 11	A 10	30	3.780453152	101.4559956	PLB
11	A 10	A 9	30	3.780404378	101.4556763	PLB
12	A 9	T002	30	3.780342348	101.455299	PLB
13	T002	T003	35	3.780252679	101.4549459	PLB
14	T003	A 6	35	3.780187588	101.4545263	PLB
15	A 6	A 5	30	3.780141633	101.4540898	PLB
16	A 5	A 4	30	3.780066372	101.4537234	PLB
17	A 4	A 3	30	3.780007856	101.4532701	PLB
18	A 3	A 2	30	3.779922705	101.4528513	PLB
19	A 2	A 1	30	3.779889974	101.4525352	PLB
20	A 1	A 1/A	30	3.779815926	101.4521515	PLB
21	A 1/A	SB 13	30	3.779778589	101.4518098	PLB
22	SB 13	SB 12	30	3.779486862	101.4504915	PLB
23	SB 12	SB 11	30	3.779376774	101.4500471	PLB
24	SB 11	SB 10	30	3.779171606	101.4496126	PLB
25	SB 10	SB 9	30	3.778602351	101.4488503	PLB
26	SB 9	SB 8	30	3.778329466	101.4486573	PLB
27	SB 8	SB 7	30	3.778050578	101.4486159	PLB
28	SB 7	SB 6	30	3.777810827	101.4486234	PLB
29	SB 6	SB 5	30	3.777581389	101.4486583	PLB
30	SB 5	SB 4	30	3.777321487	101.4486432	PLB
31	SB 4	SB 3	30	3.777122707	101.4485688	PLB
32	SB 3	SB 2	30	3.776961518	101.4484521	PLB
33	SB 2	SB 1	30	3.77685085	101.4483085	PLB
34	SB 1	KH3 11/A	30	3.776696601	101.448068	PLB
35	KH3 11/A	PLB KH3 37	30	3.776647238	101.4479493	JKR
36	PLB KH3 37	KH3 A1	30	3.776781186	101.4478965	JKR
37	KH3 A1	KH3 A2	30	3.776929989	101.4478223	JKR
38	KH3 A2	NO ID	30	3.777103954	101.4477472	JKR
39	NO ID	NO ID	30	3.777271228	101.4476812	JKR
40	NO ID	NO ID	30	3.7774288	101.4475977	JKR
41	NO ID	KH3 A66	30	3.777480393	101.4473674	JKR

NO	POLE ID	TO POLE	DISTANCE	LATITUDE	LONGITUDE	LOCAL AUTHORITY
42	KH3 A66	PLB KH3 31	30	3.777668671	101.4473204	JKR
43	PLB KH3 31	PLB KH3 30	30	3.777796468	101.4472745	JKR
44	PLB KH3 30	PLB KH3 29	30	3.778040687	101.4471749	JKR
45	PLB KH3 29	PLB KH3 28	30	3.7782841	101.447073	JKR
46	PLB KH3 28	PLB KH3 27	30	3.778558	101.4469538	JKR
47	PLB KH3 27	PLB KH3 26	30	3.7788263	101.4468235	JKR
48	PLB KH3 26	PLB KH3 25	30	3.7790867	101.446715	JKR
49	PLB KH3 25	PLB KH3 24	30	3.779361315	101.4466027	JKR
50	PLB KH3 24	PLB KH3 23	30	3.779581082	101.4465192	JKR
51	PLB KH3 23	PLB KH3 22	30	3.7798433	101.4463866	JKR
52	PLB KH3 22	PLB KH3 21	30	3.780077595	101.4462939	JKR
53	PLB KH3 21	PLB KH3 20	30	3.780351626	101.4461704	JKR
54	PLB KH3 20	PLB KH3 19	30	3.78057877	101.4460767	JKR
55	PLB KH3 19	PLB KH3 18	30	3.78083349	101.4459586	JKR
56	PLB KH3 18	PLB KH3 17	30	3.781078673	101.4458414	JKR
57	PLB KH3 17	PLB KH3 16	30	3.781298842	101.4457306	JKR
58	PLB KH3 16	PLB KH3 15	30	3.781584434	101.4455733	JKR
59	PLB KH3 15	PLB KH3 14	30	3.781847763	101.4454238	JKR
60	PLB KH3 14	PLB KH3 13	30	3.7820182	101.4452955	JKR
61	PLB KH3 13	PLB KH3 12	30	3.7822504	101.4451709	JKR
62	PLB KH3 12	PLB KH3 11	30	3.7824735	101.4450429	JKR
63	PLB KH3 11	PLB KH3 10	30	3.782720412	101.4448402	JKR
64	PLB KH3 10	PLB KH3 9	30	3.7829669	101.4446384	JKR
65	PLB KH3 9	PLB KH3 8	30	3.783235526	101.4444541	JKR
66	PLB KH3 8	PLB KH3 7	30	3.7834562	101.4442792	JKR
67	PLB KH3 7	PLB KH3 6	30	3.783666895	101.444087	JKR
68	PLB KH3 6	PLB KH3 5	30	3.78383128	101.4439531	JKR
69	PLB KH3 5	PLB KH3 4	30	3.784053269	101.4437664	JKR
70	PLB KH3 4	PLB KH3 3	30	3.784239684	101.4436027	JKR
71	PLB KH3 3	PLB KH3 2	30	3.784475492	101.4434086	JKR
72	PLB KH3 2	PMUS SSUP 8KS 259	30	3.784657454	101.4432442	JKR
77	PMUS SSUP 8KS 259	PMUS SSUP 8KS 258	30	3.784874499	101.4430515	JKR
78	PMUS SSUP 8KS 258	PMUS SSUP 8KS 257	35	3.785044077	101.4428944	JKR
79	PMUS SSUP 8KS 257	PMUS SSUP 8KS 256	35	3.7852802	101.4427044	JKR
80	PMUS SSUP 8KS 256	PMUS SSUP 8KS 255	30	3.785479511	101.4425531	JKR
81	PMUS SSUP 8KS 255	PMUS SSUP 8KS 254	30	3.7857	101.442358	JKR
82	PMUS SSUP 8KS 254	PMUS SSUP 8KS 253	30	3.785941618	101.4421296	JKR
83	PMUS SSUP 8KS 253	PMUS SSUP 8KS 252	30	3.786116627	101.4420183	JKR

NO	POLE ID	TO POLE	DISTANCE	LATITUDE	LONGITUDE	LOCAL AUTHORITY
84	PMUS SSUP 8KS 252	PMUS SSUP 8KS 251	30	3.7863222	101.4418213	JKR
85	PMUS SSUP 8KS 251	PMUS SSUP 8KS 250	30	3.786550854	101.4416348	JKR
86	PMUS SSUP 8KS 250	PMUS SSUP 8KS 249	30	3.7867218	101.4414933	JKR
87	PMUS SSUP 8KS 249	PMUS SSUP 8KS 248	30	3.7869342	101.4413206	JKR
88	PMUS SSUP 8KS 248	PMUS SSUP 8KS 247	30	3.787143221	101.4411325	JKR
89	PMUS SSUP 8KS 247	PMUS SSUP 8KS 246	30	3.7873355	101.440965	JKR
90	PMUS SSUP 8KS 246	PMUS SSUP 8KS 245	30	3.787502977	101.4408284	JKR
91	PMUS SSUP 8KS 245	PMUS SSUP 8KS 244	30	3.787711538	101.4406442	JKR
92	PMUS SSUP 8KS 244	PMUS SSUP 8KS 243	30	3.787913601	101.4404903	JKR
93	PMUS SSUP 8KS 243	PMUS SSUP 8KS 242	30	3.78810984	101.4403225	JKR
94	PMUS SSUP 8KS 242	PMUS SSUP 8KS 241	30	3.78833039	101.4401204	JKR
95	PMUS SSUP 8KS 241	PMUS SSUP 8KS 240	30	3.788529692	101.4399651	JKR
96	PMUS SSUP 8KS 240	PMUS SSUP 8KS 239	30	3.7888045	101.4397322	JKR
97	PMUS SSUP 8KS 239	PMUS SSUP 8KS 238	30	3.7889204	101.4396368	JKR
98	PMUS SSUP 8KS 238	PMUS SSUP 8KS 237	30	3.789176494	101.4394003	JKR
99	PMUS SSUP 8KS 237	PMUS SSUP 8KS 236	30	3.78934956	101.439251	JKR
100	PMUS SSUP 8KS 236	PMUS SSUP 8KS 235	30	3.789592299	101.4390379	JKR
101	PMUS SSUP 8KS 235	PMUS SSUP 8KS 234	30	3.789751444	101.4388433	JKR
102	PMUS SSUP 8KS 234	PMUS SSUP 8KS 233	30	3.789927748	101.4387175	JKR
103	PMUS SSUP 8KS 233	PMUS SSUP 8KS 232	30	3.7901775	101.4385528	JKR
104	PMUS SSUP 8KS 232	PMUS SSUP 8KS 231	30	3.790438819	101.4382854	JKR
105	PMUS SSUP 8KS 231	PMUS SSUP 8KS 230	30	3.79062	101.4382001	JKR
106	PMUS SSUP 8KS 230	PMUS SSUP 8KS 229	30	3.7908656	101.4380289	JKR
107	PMUS SSUP 8KS 229	PMUS SSUP 8KS 228	30	3.791074895	101.4378562	JKR

NO	POLE ID	TO POLE	DISTANCE	LATITUDE	LONGITUDE	LOCAL AUTHORITY
108	PMUS SSUP 8KS 228	PMUS SSUP 8KS 227	30	3.791261279	101.4377049	JKR
109	PMUS SSUP 8KS 227	PMUS SSUP 8KS 226	30	3.791448089	101.437551	JKR
110	PMUS SSUP 8KS 226	PMUS SSUP 8KS 225	30	3.7916644	101.437402	JKR
111	PMUS SSUP 8KS 225	PMUS SSUP 8KS 224	30	3.791854167	101.4372536	JKR
112	PMUS SSUP 8KS 224	PMUS SSUP 8KS 223	30	3.792029639	101.4371089	JKR
113	PMUS SSUP 8KS 223	PMUS SSUP 8KS 222	30	3.792234716	101.4369509	JKR
114	PMUS SSUP 8KS 222	PMUS SSUP 8KS 221	30	3.7923936	101.436831	JKR
115	PMUS SSUP 8KS 221	PMUS SSUP 8KS 220	30	3.792595389	101.4366737	JKR
116	PMUS SSUP 8KS 220	PMUS SSUP 8KS 219	30	3.792790696	101.4364988	JKR
117	PMUS SSUP 8KS 219	PMUS SSUP 8KS 218	30	3.792931269	101.43638	JKR
118	PMUS SSUP 8KS 218	PMUS SSUP 8KS 217	30	3.793066264	101.4362423	JKR
119	PMUS SSUP 8KS 217	PMUS SSUP 8KS 216	30	3.793198903	101.4361226	JKR
120	PMUS SSUP 8KS 216	PMUS SSUP 8KS 215	30	3.793414727	101.4359654	JKR
121	PMUS SSUP 8KS 215	PMUS SSUP 8KS 214	30	3.793633582	101.435785	JKR
122	PMUS SSUP 8KS 214			3.793851147	101.4355925	JKR

**Proposed New Pole Lat & Long Table**

**(S.J.K. (TAMIL) TROLAK)**

NO	POLE ID	TO POLE	DISTANCE	LATITUDE	LONGITUDE	LOCAL AUTHORITY
1	TK-KK 8	TK-KK 9	35	3.836561942	101.3987975	JKR
2	TK-KK 9	TK-KK 10	35	3.836812226	101.3986371	JKR
3	TK-KK 10	TK-KK 11	35	3.837040791	101.3984679	JKR
4	TK-KK 11	TK-KK 12	35	3.837253337	101.3983087	JKR
5	TK-KK 12	TK-KK 13	35	3.837378342	101.3983144	JKR
6	TK-KK 13	TK-KK 14	35	3.837622615	101.3981706	JKR
7	TK-KK 14	TK-KK 15	35	3.8378568	101.3980436	JKR
8	TK-KK 15	TK-KK 16	35	3.83803702	101.3979631	JKR
9	TK-KK 16	TK-KK 17	35	3.838207293	101.3978786	JKR
10	TK-KK 17	TK-KK 18	35	3.838391616	101.3977679	JKR
11	TK-KK 18	TK-KK 19	35	3.838656344	101.39767	JKR
12	TK-KK 19	TK-KK 20	35	3.838874524	101.3975661	JKR
13	TK-KK 20	TK-KK 21	35	3.839006089	101.3974957	JKR
14	TK-KK 21	TK-KK 22	35	3.839211765	101.3973911	JKR
15	TK-KK 22	TK-KK 23	35	3.83938867	101.3973003	JKR
16	TK-KK 23	TK-KK 24	35	3.839575496	101.3972033	JKR
17	TK-KK 24	TK-KK 25	35	3.839782231	101.3970944	JKR
18	TK-KK 25	TK-KK 26	35	3.839909801	101.3970122	JKR
19	TK-KK 26	TK-KK 27	35	3.840071929	101.3968975	JKR
20	TK-KK 27	TK-KK 28	35	3.840237517	101.3967649	JKR
21	TK-KK 28	TK-KK 29	35	3.840428519	101.3966059	JKR
22	TK-KK 29	KK HS 2	35	3.840605493	101.396461	JKR
23	KK HS 2	KK HS 3	35	3.840850773	101.3963188	JKR
24	KK HS 3	KK HS 4	35	3.8410294	101.3961936	JKR
25	KK HS 4	KK HS 5	35	3.841202015	101.3960684	JKR
26	KK HS 5	KK HS 6	35	3.841485034	101.3958849	JKR
27	KK HS 6	KK HS 7	35	3.841731999	101.3957028	JKR
28	KK HS 7	KK HS 8	35	3.841943988	101.3955174	JKR
29	KK HS 8	KK HS 9	35	3.84208743	101.3953895	JKR
30	KK HS 9	KK HS 10	35	3.842211872	101.3952819	JKR
31	KK HS 10	NO ID	35	3.842363351	101.3951741	JKR
32	NO ID	SP2 B/6	35	3.842598983	101.3949384	MPTM
33	SP2 B/6	SP2 B/5	35	3.842680366	101.3947389	MPTM
34	SP2 B/5	SP2 B/4	35	3.842519226	101.3944719	MPTM
35	SP2 B/4	SP2 B/3	35	3.842431228	101.394339	MPTM
36	SP2 B/3	SP2 B/2	35	3.842287474	101.3940915	MPTM
37	SP2 B/2	T004	35	3.842287474	101.3940915	MPTM
38	T004	T005	35	3.842016232	101.3936519	MPTM
39	T005	SP1 4/5	35	3.841900823	101.3935235	MPTM
40	SP1 4/5	SP1 4/4	35	3.842070967	101.3934096	MPTM

NO	POLE ID	TO POLE	DISTANCE	LATITUDE	LONGITUDE	LOCAL AUTHORITY
41	SP1 4/4	SP1 4/3	35	3.842343848	101.3932446	MPTM
42	SP1 4/3	SP1 4/2	35	3.842547975	101.3931059	MPTM
43	SP1 4/2	T006	35	3.842814515	101.392935	MPTM
44	T006	T007	35	3.843048993	101.3927795	MPTM
45	T007	SP1 E/2	35	3.843343562	101.3928056	MPTM
46	SP1 E/2	SP1 E/3	35	3.843503797	101.393065	MPTM
47	SP1 E/3	SP1 E/4	35	3.843676192	101.3933813	MPTM
48	SP1 E/4	SP1 E/5	35	3.843815927	101.3936034	MPTM
49	SP1 E/5	SP1 E/6	35	3.843950322	101.3938288	MPTM
50	SP1 E/6	NO ID	35	3.844076305	101.393976	MPTM
51	NO ID	T008	35	3.844227933	101.3940905	JKR
52	T008	T009	35	3.844510013	101.3939424	JKR
53	T009	CM 11	35	3.844787433	101.3937836	JKR
54	CM 11	NO ID	35	3.845034234	101.3936564	JKR
55	NO ID	ACM 13	35	3.845171388	101.3935753	JKR
56	ACM 13	ACM 13A	35	3.84535504	101.3934901	JKR
57	ACM 13A	ACM 14	35	3.845527319	101.3933892	JKR
58	ACM 14	ACM 15	35	3.845894288	101.3932276	JKR
59	ACM 15	ACM 16	35	3.846238845	101.3930878	JKR
60	ACM 16	ACM 17	35	3.846684761	101.3929798	JKR
61	ACM 17	ACM 18	35	3.847111944	101.392946	JKR
62	ACM 18	ACM 19	35	3.847428066	101.3929594	JKR
63	ACM 19	ACM 20	35	3.847956038	101.3931167	JKR
64	ACM 20	ACM 21	35	3.848365492	101.3932993	JKR
65	ACM 21	ACM 22	35	3.848760101	101.3934756	JKR
66	ACM 22	ACM 23	35	3.849128517	101.3936771	JKR
67	ACM 23	SP1 BT4 25	35	3.849381505	101.3938033	JKR
68	SP1 BT4 25	SP1 BT4 26	35	3.850247385	101.3944217	JKR
69	SP1 BT4 26	SP1 BT4 27	35	3.850543175	101.394464	JKR
70	SP1 BT4 27	SP1 BT4 28	35	3.850807331	101.3944842	JKR
71	SP1 BT4 28	SP1 BT4 29	35	3.851070399	101.3944778	JKR
72	SP1 BT4 29	SP1 BT4 30	35	3.851317399	101.3944331	JKR
73	SP1 BT4 30	SP1 BT4 31	35	3.851585259	101.3943558	JKR
74	SP1 BT4 31	SP1 BT4 32	35	3.851822651	101.3942656	JKR
75	SP1 BT4 32	SP1 BT4 33	35	3.852068561	101.3941403	JKR
76	SP1 BT4 33	SP1 BT4 34	35	3.852299391	101.3939856	JKR
77	SP1 BT4 34	SP1 BT4 35	35	3.852494693	101.3938375	JKR
78	SP1 BT4 35	SP1 BT4 36	35	3.852697522	101.3936554	JKR
79	SP1 BT4 36	SP1 BT4 37	35	3.852869268	101.3934671	JKR
80	SP1 BT4 37	SP1 BT4 38	35	3.853054068	101.39327	JKR
81	SP1 BT4 38	SP1 BT4 39	35	3.853239069	101.393066	JKR
82	SP1 BT4 39	SP1 BT4 40	35	3.853433363	101.3928724	JKR
83	SP1 BT4 40	SP1 BT4 41	35	3.853590524	101.3927015	JKR
84	SP1 BT4 41	SP1 BT4 42	35	3.85381034	101.3924531	JKR

NO	POLE ID	TO POLE	DISTANCE	LATITUDE	LONGITUDE	LOCAL AUTHORITY
85	SP1 BT4 42	SP1 BT4 43	35	3.854004024	101.3922621	JKR
86	SP1 BT4 43	SP1 BT4 44	35	3.854147732	101.3921257	JKR
87	SP1 BT4 44	SP1 BT4 45	35	3.854344265	101.3919148	JKR
88	SP1 BT4 45	SP1 BT4 46	35	3.854512943	101.391733	JKR
89	SP1 BT4 46	SP1 BT4 47	35	3.854713389	101.3915059	JKR
90	SP1 BT4 47	SP1 BT4 48	35	3.854913598	101.3912876	JKR
91	SP1 BT4 48	SP1 BT4 49	35	3.855071688	101.3911312	JKR
92	SP1 BT4 49	SP1 BT4 50	35	3.855267871	101.3909192	JKR
93	SP1 BT4 50	SP1 BT4 51	35	3.855443474	101.3907254	JKR
94	SP1 BT4 51	T010	35	3.855635487	101.3905125	JKR
95	T010	BT4 LGH 2	35	3.855832852	101.3903047	JKR
96	BT4 LGH 2	BT4 LGH 3	35	3.856002502	101.390127	JKR
97	BT4 LGH 3	BT4 LGH 4	35	3.856157944	101.3899053	JKR
98	BT4 LGH 4	BT4 LGH 5	35	3.856302361	101.3896788	JKR
99	BT4 LGH 5	BT4 LGH 6	35	3.856391315	101.3894616	JKR
100	BT4 LGH 6	BT4 LGH 7	35	3.856476437	101.3892495	JKR
101	BT4 LGH 7	BT4 LGH 8	35	3.856546486	101.3890247	JKR
102	BT4 LGH 8	BT4 LGH 9	35	3.856612041	101.3888099	JKR
103	BT4 LGH 9	BT4 LGH 10	35	3.856684969	101.3885452	JKR
104	BT4 LGH 10	BT4 LGH 11	35	3.856752002	101.3883092	JKR
105	BT4 LGH 11	BT4 LGH 12	35	3.856825691	101.3880822	JKR
106	BT4 LGH 12	BT4 LGH 13	35	3.85688486	101.387909	JKR
107	BT4 LGH 13	BT4 LGH 14	35	3.85696697	101.3876967	JKR
108	BT4 LGH 14	BT4 LGH 15	35	3.857071534	101.3874667	JKR
109	BT4 LGH 15	BT4 LGH 16	35	3.857191181	101.3872565	JKR
110	BT4 LGH 16	BT4 LGH 17	35	3.857316081	101.3870155	JKR
111	BT4 LGH 17	BT4 LGH 18	35	3.857477958	101.3867941	JKR
112	BT4 LGH 18	BT4 LGH 19	35	3.857604231	101.3866448	JKR
113	BT4 LGH 19	BT4 LGH 20	35	3.857754011	101.3864809	JKR
114	BT4 LGH 20	BT4 LGH 21	35	3.857929979	101.3863062	JKR
115	BT4 LGH 21	BT4 LGH 22	35	3.858082768	101.3861599	JKR
116	BT4 LGH 22	BT4 LGH 23	35	3.858252646	101.3860252	JKR
117	BT4 LGH 23	BT4 LGH 24	35	3.858421127	101.3859037	JKR
118	BT4 LGH 24	BT4 LGH 25	35	3.858660877	101.3857556	JKR
119	BT4 LGH 25	BT4 LGH 26	35	3.858866856	101.3856377	JKR
120	BT4 LGH 26	BT4 LGH 27	35	3.859128444	101.3855338	JKR
121	BT4 LGH 27	BT4 LGH 28	35	3.859384491	101.3854197	JKR
122	BT4 LGH 28	BT4 LGH 29	35	3.859592429	101.3853394	JKR
123	BT4 LGH 29	BT4 LGH 30	35	3.859829377	101.3852751	JKR
124	BT4 LGH 30	BT4 LGH 31	35	3.860015079	101.3852375	JKR
125	BT4 LGH 31	BT4 LGH 32	35	3.860184658	101.3852083	JKR
126	BT4 LGH 32	BT4 LGH 33	35	3.860461294	101.385171	JKR
127	BT4 LGH 33	BT4 LGH 34	35	3.860798522	101.3851507	JKR
128	BT4 LGH 34	BT4 LGH 35	35	3.861025494	101.3851483	JKR
129	BT4 LGH 35	BT4 LGH 36	35	3.861211093	101.3851539	JKR

NO	POLE ID	TO POLE	DISTANCE	LATITUDE	LONGITUDE	LOCAL AUTHORITY
130	BT4 LGH 36	BT4 LGH 37	35	3.861473363	101.3851662	JKR
131	BT4 LGH 37	BT4 LGH 38	35	3.861739143	101.3851871	JKR
132	BT4 LGH 38	BT4 LGH 39	35	3.861963933	101.3852037	JKR
133	BT4 LGH 39	BT4 LGH 40	35	3.862179982	101.3852064	JKR
134	BT4 LGH 40	BT4 LGH 41	35	3.862507845	101.3852229	JKR
135	BT4 LGH 41	BT4 LGH 42	35	3.862715678	101.3852369	JKR
136	BT4 LGH 42	BT4 LGH 43	35	3.862920641	101.3852455	JKR
137	BT4 LGH 43	BT4 LGH 44	35	3.863134889	101.3852703	JKR
138	BT4 LGH 44	BT4 LGH 45	35	3.863441252	101.3852596	JKR
139	BT4 LGH 45	BT4 LGH 46	35	3.863613966	101.3852796	JKR
140	BT4 LGH 46	BT4 LGH 47	35	3.863852658	101.385293	JKR
141	BT4 LGH 47	BT4 LGH 48	35	3.864082224	101.3853087	JKR
142	BT4 LGH 48	BT4 LGH 49	35	3.86436568	101.3853272	JKR
143	BT4 LGH 49	BT4 LGH 50	35	3.864582101	101.3853332	JKR
144	BT4 LGH 50	BT4 LGH 51	35	3.86481233	101.3853481	JKR
145	BT4 LGH 51	BT4 LGH 52	35	3.865581104	101.3853684	JKR
146	BT4 LGH 52	BT4 LGH 53	35	3.865056767	101.3853594	JKR
147	BT4 LGH 53	GH 1B/1	35	3.865337644	101.3853727	JKR
148	GH 1B/1	LGH TP 4	35	3.865742385	101.3853841	JKR
149	LGH TP 4	LGH TP 5	35	3.865908	101.3854757	JKR
150	LGH TP 5	LGH TP 6	35	3.866080209	101.3854301	JKR
151	LGH TP 6	LGH TP 7	35	3.866330633	101.3853947	JKR
152	LGH TP 7	LGH TP 8	35	3.866571735	101.3854085	JKR
153	LGH TP 8	LGH TP 9	35	3.866831192	101.3854191	JKR
154	LGH TP 9	LGH TP 10	35	3.867100532	101.3854322	JKR
155	LGH TP 10	LGH TP 11	35	3.867408289	101.3854541	JKR
156	LGH TP 11	LGH TP 12	35	3.86763409	101.3854722	JKR
157	LGH TP 12	LGH TP 13	35	3.867851533	101.38548	JKR
158	LGH TP 13	LGH TP 14	35	3.868042534	101.3854951	JKR
159	LGH TP 14	LGH TP 15	35	3.868199904	101.385505	JKR
160	LGH TP 15	LGH TP 16	35	3.86834821	101.3855122	JKR
161	LGH TP 16	LGH TP 17	35	3.868553926	101.3855246	JKR
162	LGH TP 17	LGH TP 18	35	3.868795333	101.3855328	JKR
163	LGH TP 18	LGH TP 19	35	3.869005074	101.3855486	JKR
164	LGH TP 19	LGH TP 20	35	3.869231984	101.3855594	JKR
165	LGH TP 20	LGH TP 21	35	3.8694218	101.3855721	JKR
166	LGH TP 21	LGH TP 22	35	3.869651333	101.3855865	JKR
167	LGH TP 22	LGH TP 23	35	3.869936585	101.385597	JKR
168	LGH TP 23	LGH TP 24	35	3.870236858	101.3856071	JKR
169	LGH TP 24	LGH TP 25	35	3.870486401	101.3856216	JKR
170	LGH TP 25	LGH TP 26	35	3.870745192	101.3856399	JKR
171	LGH TP 26	LGH TP 27	35	3.871026218	101.3856643	JKR
172	LGH TP 27	LGH TP 28	35	3.87128805	101.3856911	JKR
173	LGH TP 28	LGH TP 29	35	3.871525976	101.3857129	JKR

NO	POLE ID	TO POLE	DISTANCE	LATITUDE	LONGITUDE	LOCAL AUTHORITY
174	LGH TP 29	LGH TP 30	35	3.871806794	101.3857336	JKR
175	LGH TP 30	LGH TP 31	35	3.872063419	101.3857516	JKR
176	LGH TP 31	LGH TP 32	35	3.872299633	101.3857623	JKR
177	LGH TP 32	LGH TP 33	35	3.872534104	101.3857694	JKR
178	LGH TP 33	LGH TP 34	35	3.872754446	101.3857739	JKR
179	LGH TP 34	LGH TP 35	35	3.872943812	101.3857831	JKR
180	LGH TP 35	LGH TP 36	35	3.873125888	101.3857699	JKR
181	LGH TP 36	LGH TP 37	35	3.873367956	101.3857707	JKR
182	LGH TP 37	LGH TP 38	35	3.873599842	101.3857588	JKR
183	LGH TP 38	LGH TP 39	35	3.873831513	101.3857494	JKR
184	LGH TP 39	LGH TP 40	35	3.874061815	101.3857341	JKR
185	LGH TP 40	LGH TP 41	35	3.874303203	101.385704	JKR
186	LGH TP 41	LGH TP 42	35	3.874507271	101.385689	JKR
187	LGH TP 42	LGH TP 43	35	3.874734344	101.3856713	JKR
188	LGH TP 43	LGH TP 44	35	3.874976231	101.38565	JKR
189	LGH TP 44	LGH TP 45	35	3.87525206	101.3856247	JKR
190	LGH TP 45	LGH TP 46	35	3.875556725	101.3855677	JKR
191	LGH TP 46	LGH TP 47	35	3.875889713	101.3855307	JKR
192	LGH TP 47	LGH TP 48	35	3.876235532	101.3854699	JKR
193	LGH TP 48	LGH TP 49	35	3.876562432	101.3854288	JKR
194	LGH TP 49	LGH TP 50	35	3.876806599	101.3854031	JKR
195	LGH TP 50	LGH TP 51	35	3.877049128	101.3853569	JKR
196	LGH TP 51	LGH TP 52	35	3.877253736	101.3853213	JKR
197	LGH TP 52	LGH TP 53	35	3.877438519	101.3852871	JKR
198	LGH TP 53	LGH TP 54	35	3.877586068	101.3852638	JKR
199	LGH TP 54	LGH TP 55	35	3.877730479	101.3852405	JKR
200	LGH TP 55	LGH TP 56	35	3.877852074	101.3852144	JKR
201	LGH TP 56	LGH TP 57	35	3.878022939	101.3851824	JKR
202	LGH TP 57	LGH TP 58	35	3.878196841	101.3851478	JKR
203	LGH TP 58	LGH TP 59	35	3.878407564	101.3851025	JKR
204	LGH TP 59	LGH TP 60	35	3.878672537	101.3850317	JKR
205	LGH TP 60	LGH TP 61	35	3.878920325	101.3849768	JKR
206	LGH TP 61	LGH TP 62	35	3.879139861	101.3849316	JKR
207	LGH TP 62	LGH TP 63	35	3.879372674	101.3848855	JKR
208	LGH TP 63	LGH TP 64	35	3.879597647	101.3848351	JKR
209	LGH TP 64	LGH TP 65	35	3.879853912	101.384775	JKR
210	LGH TP 65	LGH TP 66	35	3.88039936	101.3846689	JKR
211	LGH TP 66	LGH TP 67	35	3.880704218	101.3846349	JKR
212	LGH TP 67	LGH TP 68	35	3.880985258	101.3845851	JKR
213	LGH TP 68	LGH TP 69	35	3.881226802	101.3845417	JKR
214	LGH TP 69	LGH TP 70	35	3.881495643	101.3845039	JKR
215	LGH TP 70	LGH TP 71	35	3.881763918	101.3844561	JKR
216	LGH TP 71	LGH TP 72	35	3.882016534	101.3843852	JKR
217	LGH TP 72	LGH TP 73	35	3.882222188	101.3843024	JKR

NO	POLE ID	TO POLE	DISTANCE	LATITUDE	LONGITUDE	LOCAL AUTHORITY
218	LGH TP 73	LGH TP 74	35	3.882393589	101.3842316	JKR
219	LGH TP 74	LGH TP 75	35	3.882575377	101.3841434	JKR
220	LGH TP 75	LGH TP 76	35	3.882738648	101.3840327	JKR
221	LGH TP 76	LGH TP 77	35	3.88296261	101.3839246	JKR
222	LGH TP 77	LGH TP 78	35	3.883180898	101.383815	JKR
223	LGH TP 78	LGH TP 79	35	3.883352694	101.383682	JKR
224	LGH TP 79	LGH TP 80	35	3.883501975	101.3835662	JKR
225	LGH TP 80	LGH TP 81	35	3.883670578	101.3834124	JKR
226	LGH TP 81	LGH TP 82	35	3.883833116	101.3832391	JKR
227	LGH TP 82	LGH TP 83	35	3.884023941	101.3830485	JKR
228	LGH TP 83	LGH TP 84	35	3.884174684	101.3828785	JKR
229	LGH TP 84	LGH TP 85	35	3.884362437	101.3826494	JKR
230	LGH TP 85	LGH TP 86	35	3.884537622	101.3824079	JKR
231	LGH TP 86	LGH TP 87	35	3.884667676	101.3822259	JKR
232	LGH TP 87	LGH TP 88	35	3.884831656	101.3820176	JKR
233	LGH TP 88	LGH TP 89	35	3.884975812	101.381829	JKR
234	LGH TP 89	LGH TP 90	35	3.885150375	101.3815866	JKR
235	LGH TP 90	LGH TP 91	35	3.885288961	101.3814108	JKR
236	LGH TP 91	LGH TP 92	35	3.885438733	101.3812353	JKR
237	LGH TP 92	LGH TP 93	35	3.885580137	101.3810516	JKR
238	LGH TP 93	LGH TP 94	35	3.885714589	101.3808736	JKR
239	LGH TP 94	LGH TP 95	35	3.885884701	101.3806465	JKR
240	LGH TP 95	LGH TP 96	35	3.886040407	101.3804123	JKR
241	LGH TP 96	LGH TP 97	35	3.886232157	101.3801657	JKR
242	LGH TP 97	LGH TP 98	35	3.886415805	101.3799228	JKR
243	LGH TP 98	LGH TP 99	35	3.886567776	101.3797213	JKR
244	LGH TP 99	LGH TP 100	35	3.886755956	101.3794885	JKR
245	LGH TP 100	LGH TP 101	35	3.886918813	101.3792638	JKR
246	LGH TP 101	LGH TP 102	35	3.887052981	101.3790919	JKR
247	LGH TP 102	LGH TP 103	35	3.887179304	101.3789231	JKR
248	LGH TP 103	LGH TP 104	35	3.88731921	101.3787353	JKR
249	LGH TP 104	LGH TP 105	35	3.887469902	101.3785227	JKR
250	LGH TP 105	LGH TP 106	35	3.887582325	101.3783322	JKR
251	LGH TP 106	LGH TP 107	35	3.887742197	101.3781381	JKR
252	LGH TP 107	LGH TP 108	35	3.887887779	101.3779356	JKR
253	LGH TP 108	LGH TP 109	35	3.888076101	101.3776962	JKR
254	LGH TP 109	LGH TP 110	35	3.888252834	101.377485	JKR
255	LGH TP 110	LGH TP 111	35	3.888397163	101.3772877	JKR
256	LGH TP 111	LGH TP 112	35	3.888543978	101.3771097	JKR
257	LGH TP 112	LGH TP 113	35	3.888693825	101.3769143	JKR
258	LGH TP 113	LGH TP 114	35	3.888841884	101.3767181	JKR
259	LGH TP 114	LGH TP 115	35	3.888989909	101.3765245	JKR
260	LGH TP 115	LGH TP 116	35	3.889147316	101.3763134	JKR

NO	POLE ID	TO POLE	DISTANCE	LATITUDE	LONGITUDE	LOCAL AUTHORITY
261	LGH TP 116	LGH TP 117	35	3.88931964	101.3760889	JKR
262	LGH TP 117	LGH TP 118	35	3.889498626	101.3758233	JKR
263	LGH TP 118	LGH TP 119	35	3.889651232	101.3756107	JKR
264	LGH TP 119	LGH TP 120	35	3.88979583	101.3754178	JKR
265	LGH TP 120	LGH TP 121	35	3.889906336	101.3752382	JKR
266	LGH TP 121	LGH TP 122	35	3.890023966	101.3750781	JKR
267	LGH TP 122	LGH TP 123	35	3.890136187	101.3749141	JKR
268	LGH TP 123	LGH TP 124	35	3.890249202	101.3747402	JKR
269	LGH TP 124	TL 6/4	35	3.890355008	101.3745328	JKR
270	TL 6/4	TL 6/3/A	35	3.890525726	101.3746909	PLB
271	TL 6/3/A	TA 6/3	35	3.890482439	101.3749591	PLB
272	TA 6/3	TL 6/2/A	35	3.89042156	101.3750838	PLB
273	TL 6/2/A	TA 6/3	35	3.890309835	101.3753074	PLB
274	TA 6/3	TL 6/2/A	35	3.89026267	101.3754861	PLB
275	TL 6/2/A	TL 6/2	35	3.890343051	101.3757356	PLB
276	TL 6/2	TL 6/1	35	3.890433192	101.3759309	PLB
277	TL 6/1	TL 6/1A	35	3.890343051	101.3757356	PLB
278	TL 6/1A	TL 6	35	3.890433192	101.3759309	PLB
279	TL 6	TL 7	35	3.890559413	101.3763011	PLB
280	TL 7	TL 7/1A	35	3.890637806	101.3765674	PLB
281	TL 7/1A	TL 7/1	35	3.890863104	101.3766241	PLB
282	TL 7/1	TL 7/2	35	3.89096514	101.3765197	PLB
283	TL 7/2	TL 7/3/1A	35	3.891188241	101.3764628	PLB
284	TL 7/3/1A	TL 7/4	35	3.891348134	101.3764102	PLB
285	TL 7/4	TL 7/3A	35	3.891554522	101.3763676	PLB
286	TL 7/3A	T011	35	3.891497508	101.3760604	PLB
287	T011		35	3.891497463	101.3757449	PLB