

TECHNICAL PROPOSAL

POP2 AEEB001 SEKOLAH MENENGAH KEBANGSAAN KHIR JOHARI (D-SIDE)

Company Name : KNZ ENGINEERING SDN BHD.
Company Address : NO 60 & 60 A JALAN KLEBANG INDAH 1 MEDAN KLEBANG INDAH 30010 IPOH PERAK
Prepared By : FARHAH AFIQAH BINTI AMDON
Date : 29/11/2024



Starting Point

Site / Boundary Name : Sungai Sumun
Address : SMK Khir Johari, Batu 17, Jalan Bagan Datoh, 36300 Sungai Sumun
District : Hilir Perak
Postcode : 36100
State : Perak
GPS Coordinate : 3.890284086, 100.8497489
LRD : A

End Point

Site / Boundary Name : Sungai Sumun
Address : Batu 16, Jalan Sungai Sumun, 36300 Sungai Sumun
District : Hilir Perak
Postcode : 36300
State : Perak
GPS Coordinate : 3.88930927, 100.8693323
LRD : B



PROJEK PENYEDIAAN DAN PENYELENGGARAAN POINT OF PRESENCE (POP) FASA 2: HAB INFRASTRUKTUR GENTIAN OPTIK BERHAMPIRAN DENGAN SEKOLAH, KAWASAN PERINDUSTRIAN, PREMIS KERAJAAN DAN KOMUNITI SEKITARNYA OLEH KEMENTERIAN KOMUNIKASI MALAYSIA – ZON UTARA (KKMM.400-11/17/132(1))



1.0 WORK SUMMARY

NO	PROPOSED DISTANCE AND METHOD	UNIT	QUANTITY
1	Horizontal Directional Drilling (HDD)	m	0
2	Carriage Way Open Trench (CW)	m	0
3	Grass Verge Open Trenching (GV)	m	0
4	Micro Trenching (MT)	m	0
Total			0

NO	OTHER INFORMATION	UNIT	QUANTITY
1	Installation of Short Span ADSS Fibre Cables	m	5,573m
2	Install New Pole	ea	132
3	Install New JRC7 Manhole	ea	0
4	Install GI Riser 100mm	ea	0
5	Install Fiber Distribution Point	ea	13
6	Install Closure	ea	5
7	Estimated Time Required for Completion	days	30

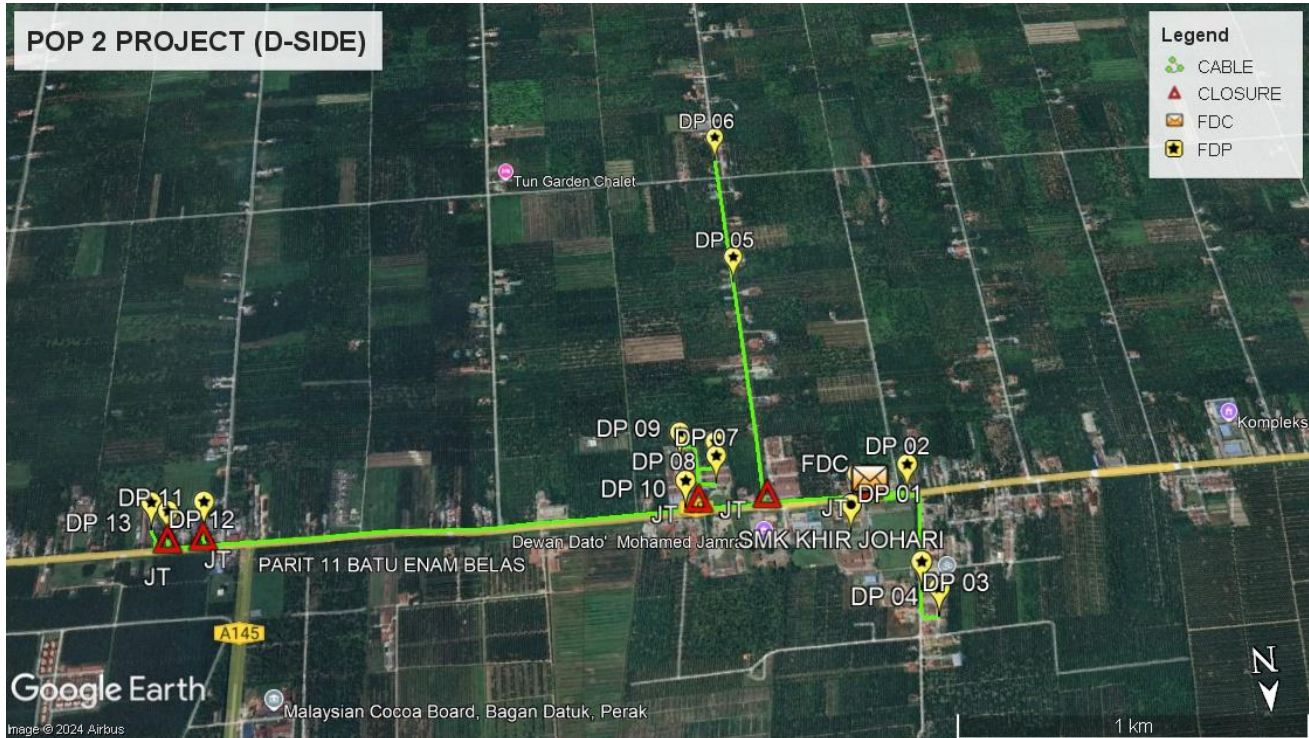
2.0 LOCAL AUTHORITY SUMMARY

Daerah Hilir Perak

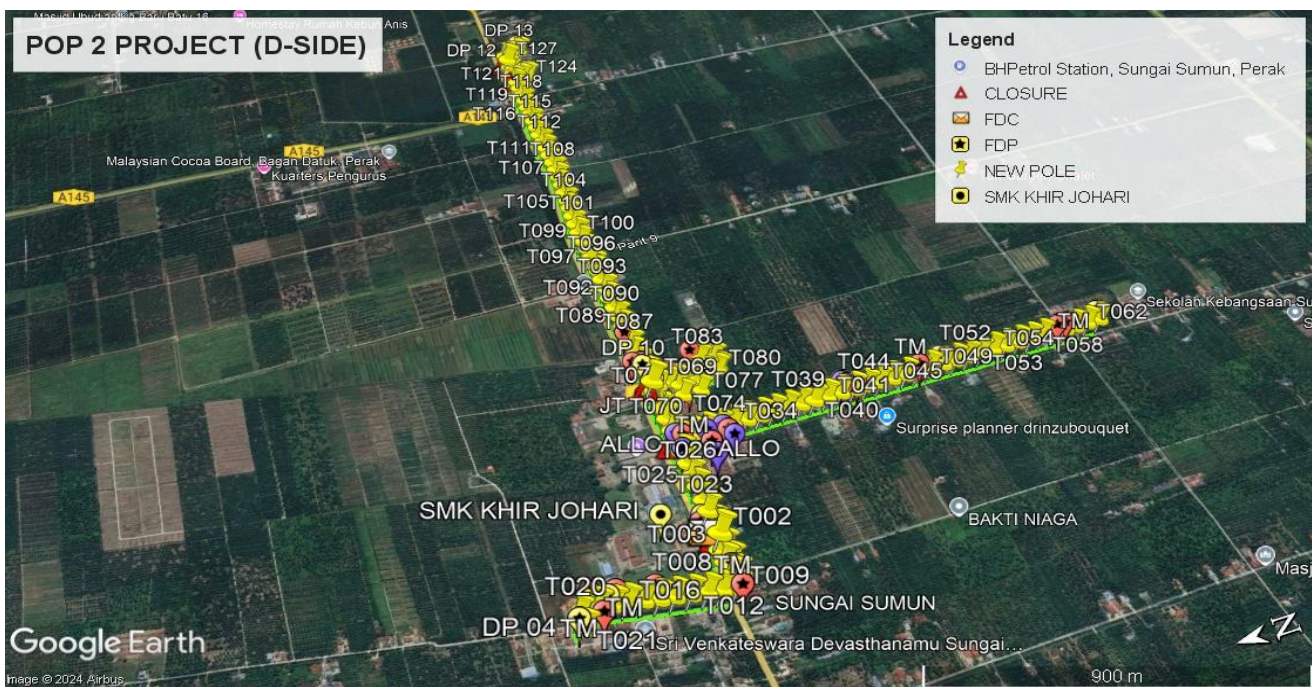
Bil	Items	Owner	Quantity	Distance
1	HDD	JKR	-	-
		Majlis	-	-
		Estate / Private Land	-	-
2	New Pole	JKR	66	2,358m
		Majlis	66	2,278m
		Estate / Private Land	-	-
3	Existing TNB Pole	JKR	-	-
		Majlis	-	-
		Estate / Private Land	-	-
Total				4,636m

Site Plan -KMZ (Overview site area)

Proposed FDP and Closure



Proposed New Pole



Site Plan - KMZ Routing (All Local Authority)

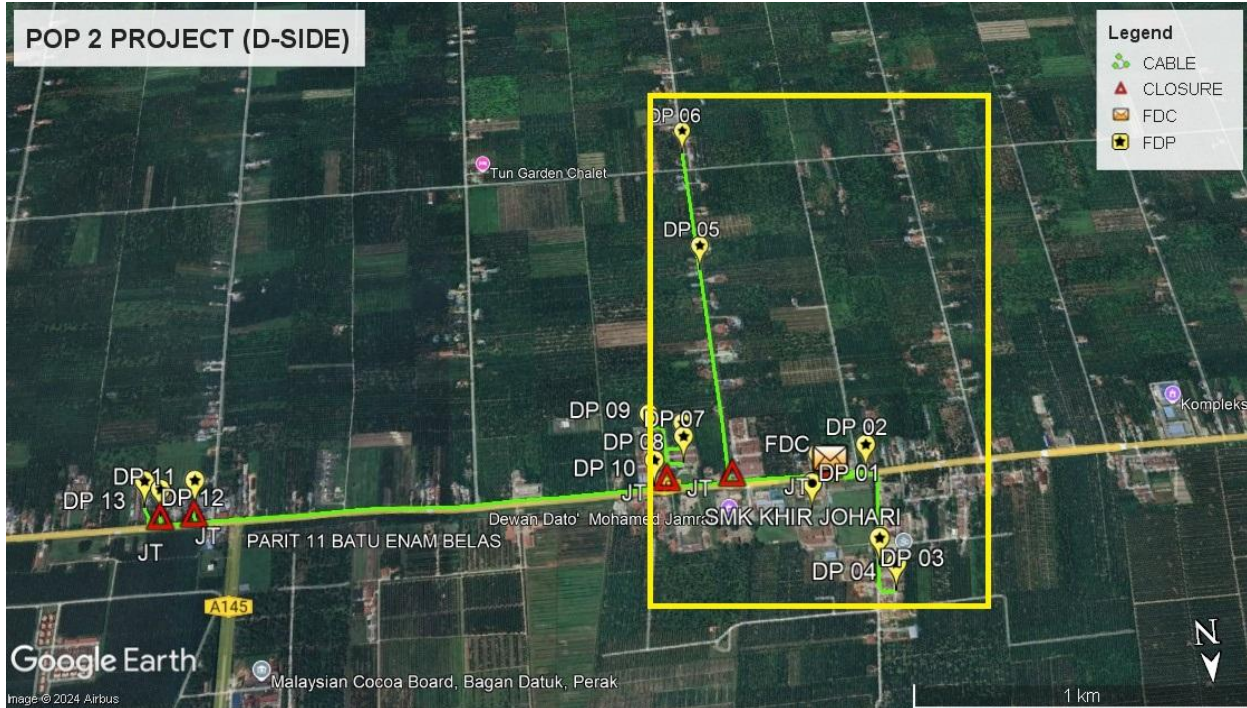


Red Colour – JKR Road

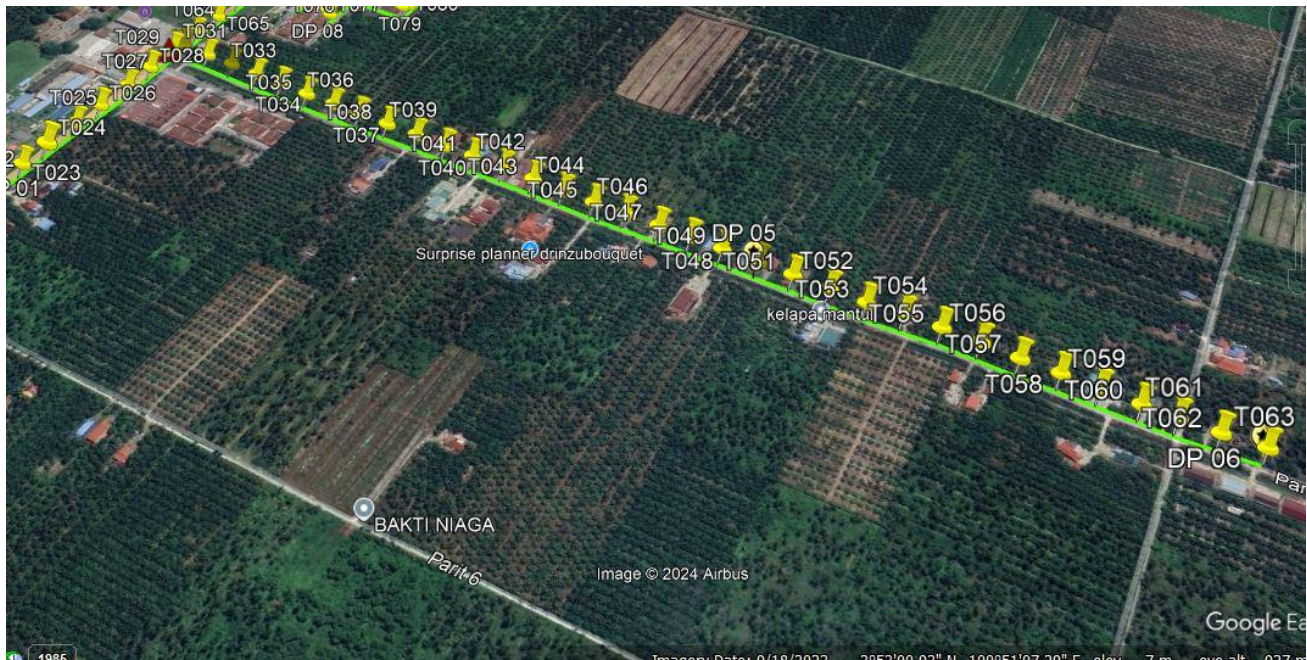
Blue Colour - Majlis Road

Site Plan – KMZ Routing (All site area)

Route 1

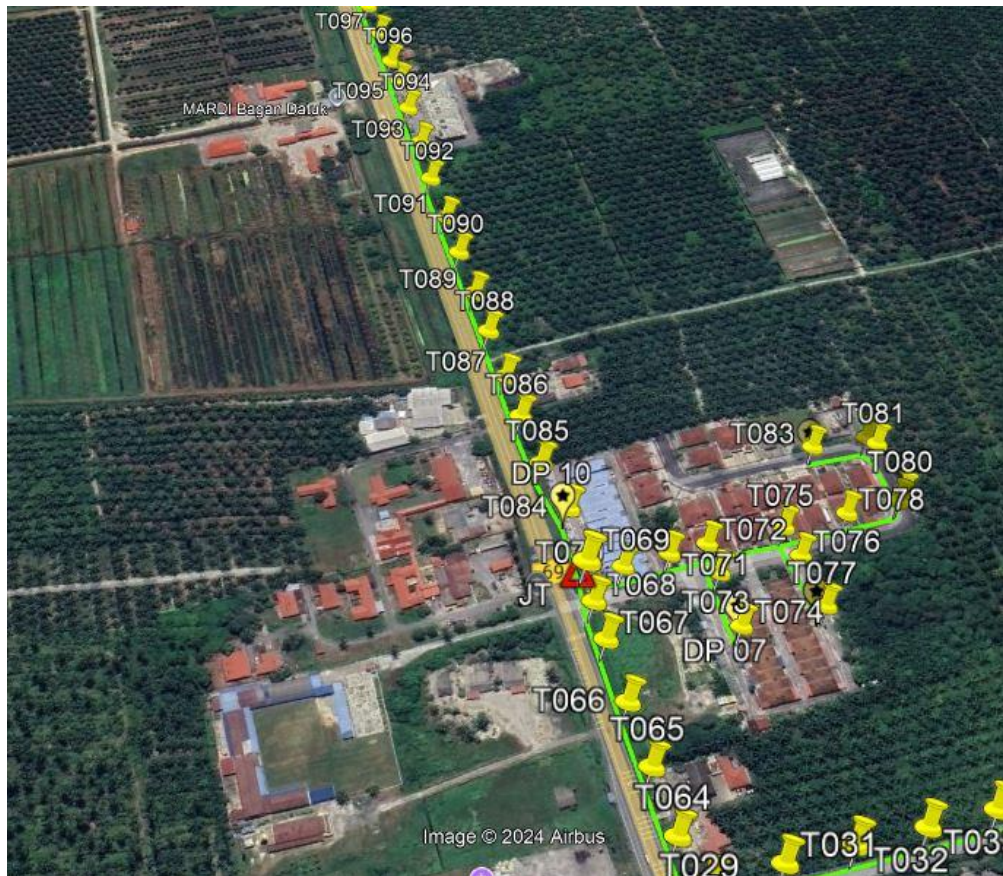
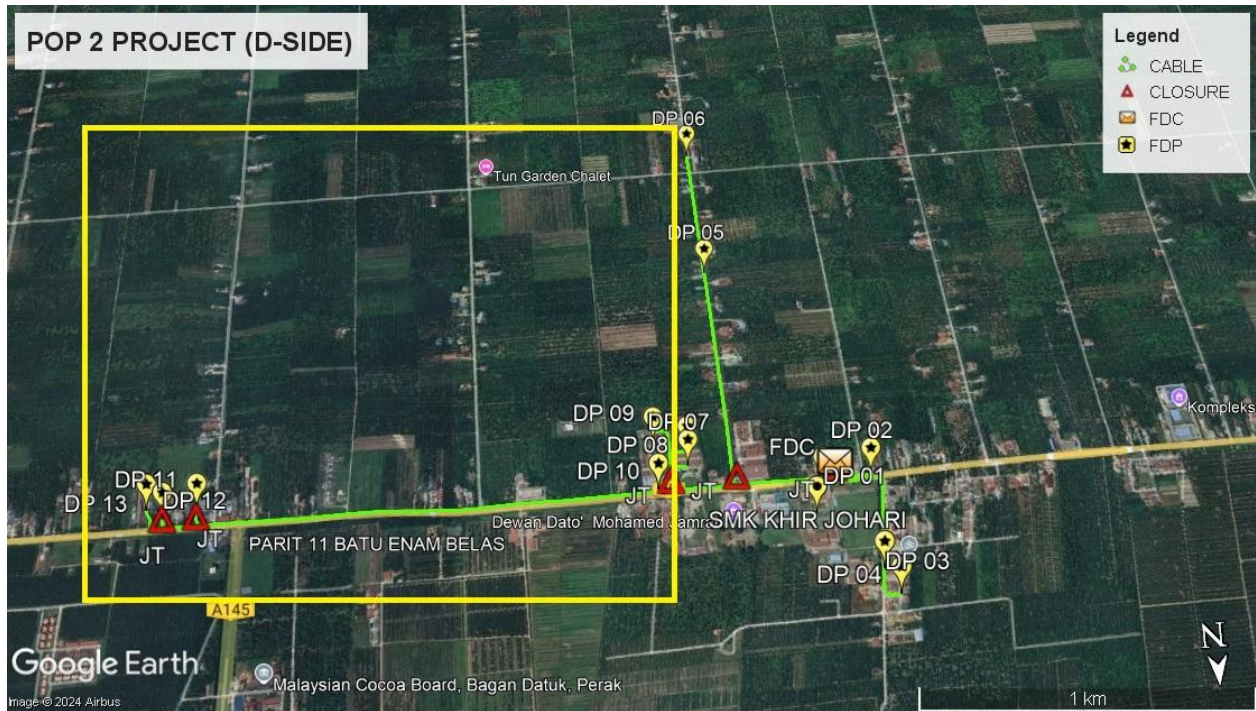


Route 1.1

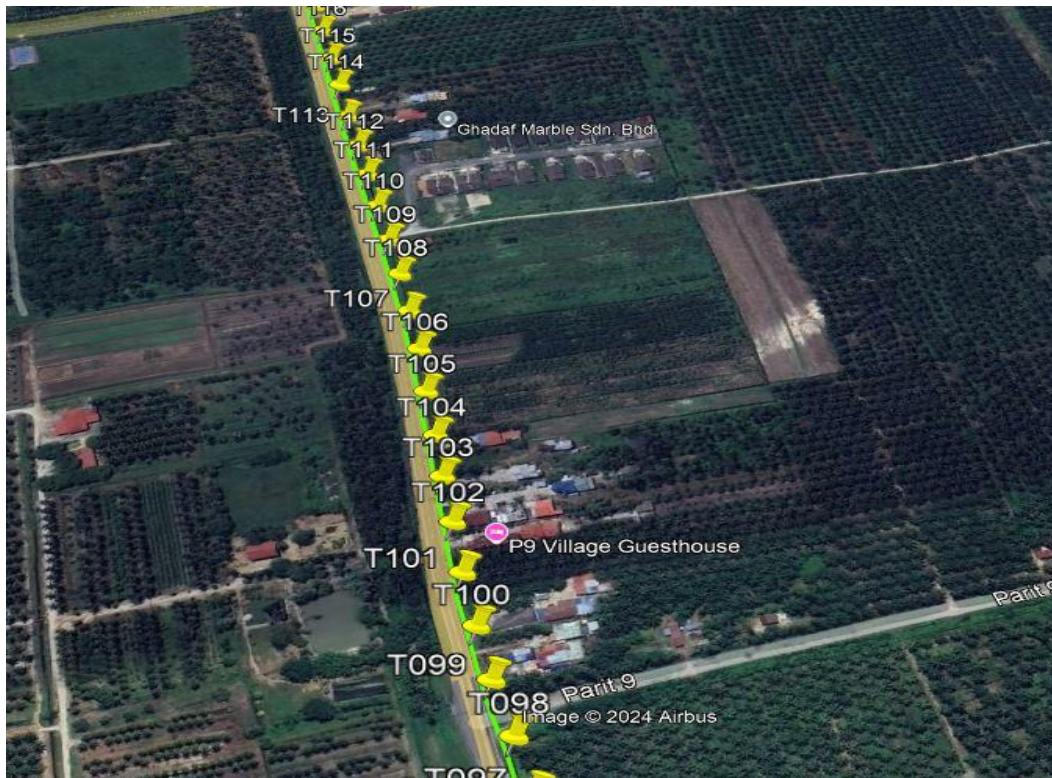


Route 1.2

Route 2



Route 2.1



Route 2.2



Route 2.3

3.0 PROPOSED NEW POLE

Proposed New Pole Coordinate					
No.	Pole Number	Distance (m)	Latitude	Longitude	Local Authority
1	T001	40	3.890284086	100.8497489	JKR Hilir Perak
2	T002	40	3.89014327	100.8493764	JKR Hilir Perak
3	T003	40	3.890133729	100.8490478	JKR Hilir Perak
4	T004	40	3.890134924	100.8486619	JKR Hilir Perak
5	T005	40	3.890131455	100.8483001	JKR Hilir Perak
6	T006	40	3.890280733	100.8490069	JKR Hilir Perak
7	T007	40	3.89027738	100.848675	JKR Hilir Perak
8	T008	40	3.890272351	100.8483139	JKR Hilir Perak
9	T009	40	3.890266987	100.8479508	JKR Hilir Perak
10	T010	40	3.890601257	100.8480185	Majlis Perbandaran Teluk Intan
11	T011	40	3.89091759	100.8480755	Majlis Perbandaran Teluk Intan
12	T012	40	3.891265774	100.8481456	Majlis Perbandaran Teluk Intan
13	T013	40	3.891619155	100.8482143	Majlis Perbandaran Teluk Intan
14	T014	40	3.891957952	100.8482716	Majlis Perbandaran Teluk Intan
15	T015	40	3.892298425	100.8483447	Majlis Perbandaran Teluk Intan
16	T016	40	3.892651973	100.8484014	Majlis Perbandaran Teluk Intan
17	T017	40	3.892952381	100.848457	Majlis Perbandaran Teluk Intan
18	T018	40	3.893282292	100.8485238	Majlis Perbandaran Teluk Intan
19	T019	40	3.893614719	100.8485811	Majlis Perbandaran Teluk Intan
20	T020	40	3.893719828	100.8484822	Majlis Perbandaran Teluk Intan
21	T021	40	3.893708428	100.8481208	Majlis Perbandaran Teluk Intan
22	T022	40	3.890140587	100.8497301	JKR Hilir Perak
23	T023	40	3.890136229	100.8500976	JKR Hilir Perak
24	T024	40	3.890133211	100.8504094	JKR Hilir Perak
25	T025	40	3.890130529	100.8508171	JKR Hilir Perak
26	T026	40	3.890126171	100.8511533	JKR Hilir Perak

3.0 PROPOSED NEW POLE

Proposed New Pole Coordinate					
No.	Pole Number	Distance (m)	Latitude	Longitude	Local Authority
27	T027	40	3.890109407	100.8515376	JKR Hilir Perak
28	T028	40	3.890116783	100.8518876	JKR Hilir Perak
29	T029	40	3.890118795	100.8522527	JKR Hilir Perak
30	T030	40	3.890056601	100.852353	Majlis Perbandaran Teluk Intan
31	T031	40	3.889690647	100.8523429	Majlis Perbandaran Teluk Intan
32	T032	40	3.889336763	100.8523382	Majlis Perbandaran Teluk Intan
33	T033	40	3.888975168	100.8523278	Majlis Perbandaran Teluk Intan
34	T034	40	3.888623295	100.8523198	Majlis Perbandaran Teluk Intan
35	T035	40	3.888260359	100.8523124	Majlis Perbandaran Teluk Intan
36	T036	40	3.887901446	100.8523141	Majlis Perbandaran Teluk Intan
37	T037	40	3.887553932	100.8523107	Majlis Perbandaran Teluk Intan
38	T038	40	3.88718429	100.8523094	Majlis Perbandaran Teluk Intan
39	T039	40	3.886814648	100.8523151	Majlis Perbandaran Teluk Intan
40	T040	40	3.8864497	100.8523164	Majlis Perbandaran Teluk Intan
41	T041	40	3.886111071	100.8523194	Majlis Perbandaran Teluk Intan
42	T042	40	3.885736233	100.8523218	Majlis Perbandaran Teluk Intan
43	T043	40	3.885378493	100.8523188	Majlis Perbandaran Teluk Intan
44	T044	40	3.885026285	100.8523157	Majlis Perbandaran Teluk Intan
45	T045	40	3.884675084	100.8523191	Majlis Perbandaran Teluk Intan
46	T046	40	3.884320529	100.8523285	Majlis Perbandaran Teluk Intan
47	T047	40	3.883944852	100.8523194	Majlis Perbandaran Teluk Intan
48	T048	40	3.883601697	100.8523245	Majlis Perbandaran Teluk Intan
49	T049	40	3.883261895	100.8523275	Majlis Perbandaran Teluk Intan
50	T050	40	3.8828889	100.8523295	Majlis Perbandaran Teluk Intan
51	T051	40	3.882532669	100.8523355	Majlis Perbandaran Teluk Intan
52	T052	40	3.882164033	100.8523402	Majlis Perbandaran Teluk Intan
53	T053	40	3.881796403	100.8523342	Majlis Perbandaran Teluk Intan

3.0 PROPOSED NEW POLE

Proposed New Pole Coordinate					
No.	Pole Number	Distance (m)	Latitude	Longitude	Local Authority
54	T054	40	3.881444698	100.8523493	Majlis Perbandaran Teluk Intan
55	T055	40	3.881086791	100.8523486	Majlis Perbandaran Teluk Intan
56	T056	40	3.880726201	100.8523496	Majlis Perbandaran Teluk Intan
57	T057	40	3.880366283	100.8523409	Majlis Perbandaran Teluk Intan
58	T058	40	3.880006028	100.8523456	Majlis Perbandaran Teluk Intan
59	T059	40	3.879661867	100.8523483	Majlis Perbandaran Teluk Intan
60	T060	40	3.879306642	100.852354	Majlis Perbandaran Teluk Intan
61	T061	40	3.879002547	100.852354	Majlis Perbandaran Teluk Intan
62	T062	40	3.878655704	100.852355	Majlis Perbandaran Teluk Intan
63	T063	40	3.87829042	100.8523627	Majlis Perbandaran Teluk Intan
64	T064	40	3.890117789	100.8526078	JKR Hilir Perak
65	T065	40	3.890117453	100.8529779	JKR Hilir Perak
66	T066	40	3.890118459	100.8533377	JKR Hilir Perak
67	T067	40	3.890115777	100.8537011	JKR Hilir Perak
68	T068	40	3.890105719	100.8539378	JKR Hilir Perak
69	T069	40	3.890077053	100.8541718	JKR Hilir Perak
70	T070	40	3.889886067	100.8541099	Majlis Perbandaran Teluk Intan
71	T071	40	3.889624388	100.8541121	Majlis Perbandaran Teluk Intan
72	T072	40	3.889411062	100.8541135	Majlis Perbandaran Teluk Intan
73	T073	40	3.88941527	100.8539233	Majlis Perbandaran Teluk Intan
74	T074	40	3.889418624	100.8535898	Majlis Perbandaran Teluk Intan
75	T075	40	3.888974139	100.8541059	Majlis Perbandaran Teluk Intan
76	T076	40	3.888954993	100.8539123	Majlis Perbandaran Teluk Intan
77	T077	40	3.888948061	100.8535899	Majlis Perbandaran Teluk Intan
78	T078	40	3.888605669	100.8541042	Majlis Perbandaran Teluk Intan
79	T079	40	3.888295873	100.8541056	Majlis Perbandaran Teluk Intan
80	T080	40	3.888247245	100.85415	Majlis Perbandaran Teluk Intan
81	T081	40	3.888246411	100.8545054	Majlis Perbandaran Teluk Intan
82	T082	40	3.888289109	100.8545588	Majlis Perbandaran Teluk Intan
83	T083	40	3.888615601	100.8545665	Majlis Perbandaran Teluk Intan
84	T084	40	3.89005593	100.8545524	JKR Hilir Perak

3.0 PROPOSED NEW POLE

Proposed New Pole Coordinate					
No.	Pole Number	Distance (m)	Latitude	Longitude	Local Authority
85	T085	40	3.890109742	100.8548994	JKR Hilir Perak
86	T086	40	3.890120806	100.8552762	JKR Hilir Perak
87	T087	40	3.890122147	100.8556051	JKR Hilir Perak
88	T088	40	3.890124494	100.8559837	JKR Hilir Perak
89	T089	40	3.890120136	100.856326	JKR Hilir Perak
90	T090	40	3.890122818	100.8567126	JKR Hilir Perak
91	T091	40	3.890124829	100.8570468	JKR Hilir Perak
92	T092	40	3.890134217	100.8574324	JKR Hilir Perak
93	T093	40	3.890115106	100.8577918	JKR Hilir Perak
94	T094	40	3.890118124	100.8581506	JKR Hilir Perak
95	T095	40	3.890106389	100.8584848	JKR Hilir Perak
96	T096	40	3.890110413	100.858748	JKR Hilir Perak
97	T097	40	3.890116448	100.8591155	JKR Hilir Perak
98	T098	40	3.890123824	100.8594682	JKR Hilir Perak
99	T099	40	3.890147628	100.8598286	JKR Hilir Perak
100	T100	40	3.890139582	100.860184	JKR Hilir Perak
101	T101	40	3.890127847	100.8605518	JKR Hilir Perak
102	T102	40	3.890100019	100.8609119	JKR Hilir Perak
103	T103	40	3.890078394	100.8612596	JKR Hilir Perak
104	T104	40	3.890045537	100.8615861	JKR Hilir Perak
105	T105	40	3.890023911	100.8619569	JKR Hilir Perak
106	T106	40	3.889987366	100.8623204	JKR Hilir Perak
107	T107	40	3.889973955	100.862658	JKR Hilir Perak
108	T108	40	3.889960209	100.8630188	JKR Hilir Perak
109	T109	40	3.889958197	100.8633768	JKR Hilir Perak
110	T110	40	3.889961215	100.8637473	JKR Hilir Perak
111	T111	40	3.889957862	100.864099	JKR Hilir Perak



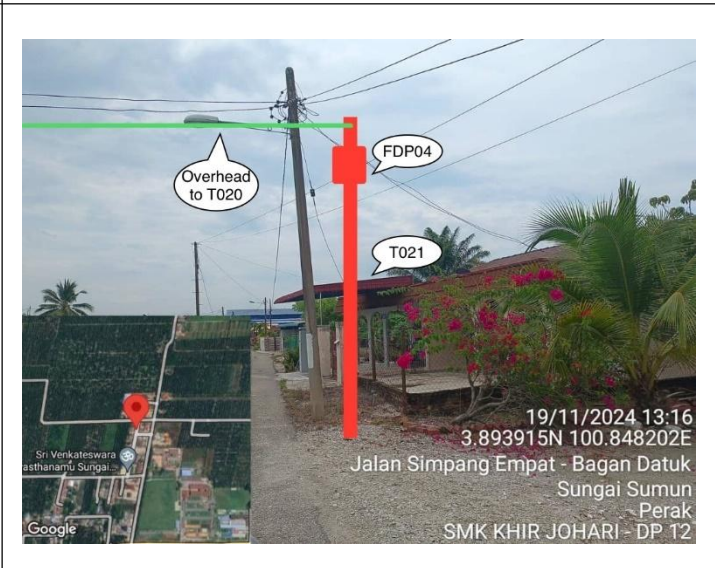
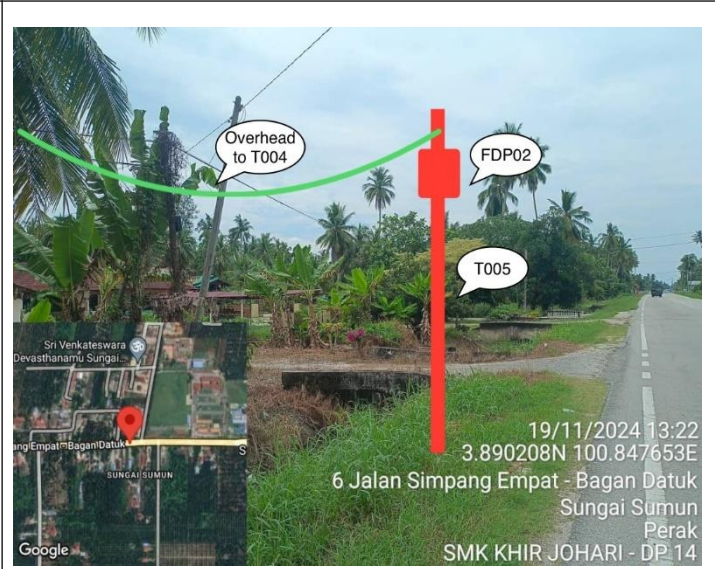
PROJEK PENYEDIAAN DAN PENYELENGGARAAN POINT OF PRESENCE (POP) FASA 2: HAB INFRASTRUKTUR GENTIAN OPTIK BERHAMPIRAN DENGAN SEKOLAH, KAWASAN PERINDUSTRIAN, PREMIS KERAJAAN DAN KOMUNITI SEKITARNYA OLEH KEMENTERIAN KOMUNIKASI MALAYSIA – ZON UTARA (KKMM.400-11/17/132(1))



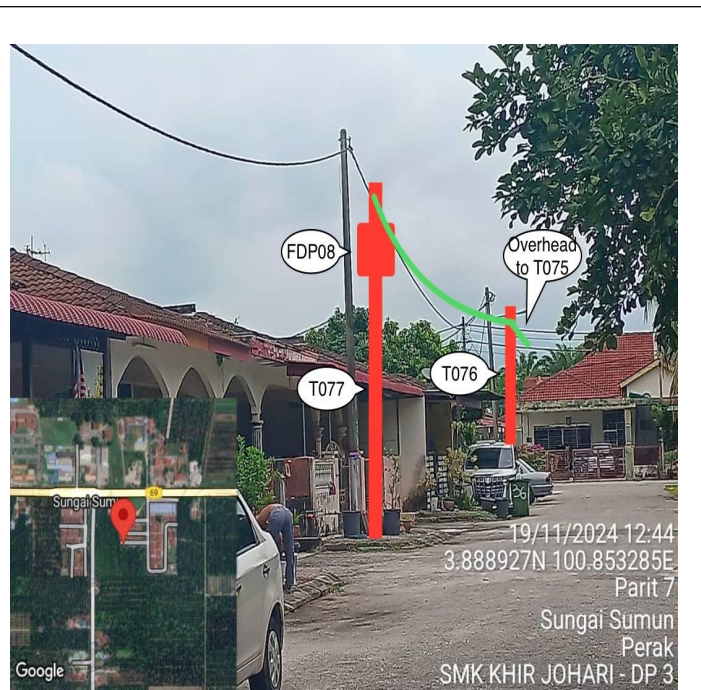
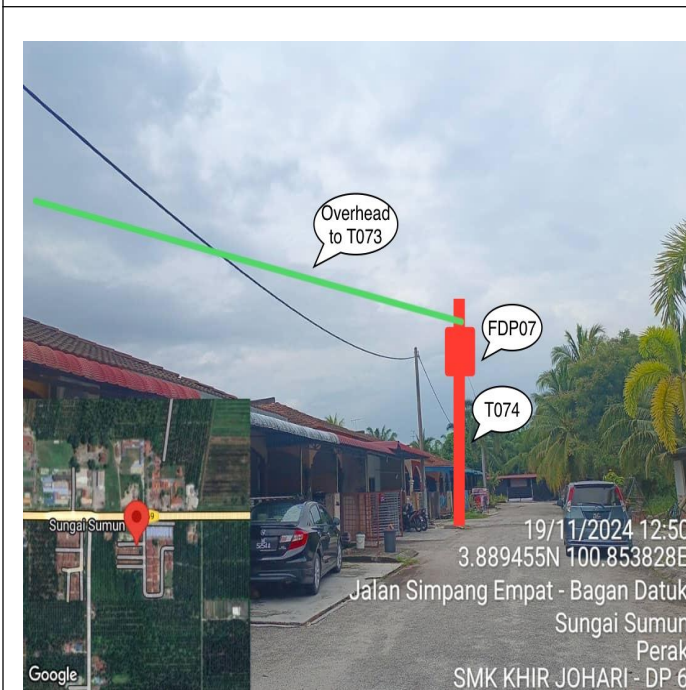
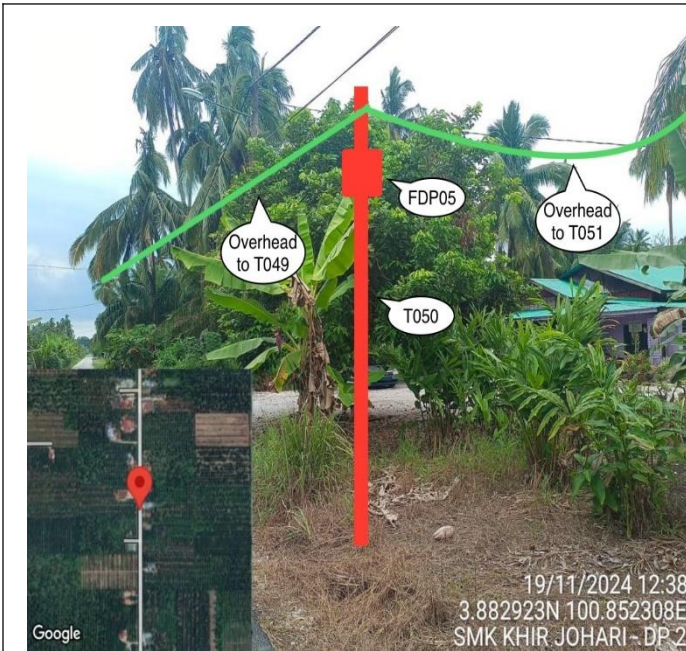
3.0 PROPOSED NEW POLE

Proposed New Pole Coordinate					
No.	Pole Number	Distance (m)	Latitude	Longitude	Local Authority
112	T112	40	3.88995518	100.8644581	JKR Hilir Perak
113	T113	40	3.889962891	100.8648239	JKR Hilir Perak
114	T114	40	3.889947636	100.8651883	JKR Hilir Perak
115	T115	40	3.889947301	100.865527	JKR Hilir Perak
116	T116	40	3.889943948	100.8659018	JKR Hilir Perak
117	T117	40	3.88993389	100.8662367	JKR Hilir Perak
118	T118	40	3.889922155	100.8666059	JKR Hilir Perak
119	T119	40	3.889919808	100.8669338	JKR Hilir Perak
120	T120	40	3.889909415	100.8672982	JKR Hilir Perak
121	T121	40	3.889906062	100.8676362	JKR Hilir Perak
122	T122	40	3.889900697	100.8678538	JKR Hilir Perak
123	T123	40	3.889637841	100.8678662	Majlis Perbandaran Teluk Intan
124	T124	40	3.88942779	100.8678722	Majlis Perbandaran Teluk Intan
125	T125	40	3.889905056	100.8681458	JKR Hilir Perak
126	T126	40	3.889898015	100.8685113	JKR Hilir Perak
127	T127	40	3.889881419	100.8688268	JKR Hilir Perak
128	T128	40	3.889610684	100.8688438	Majlis Perbandaran Teluk Intan
129	T129	40	3.889885275	100.8691774	JKR Hilir Perak
130	T130	40	3.889632812	100.8691701	Majlis Perbandaran Teluk Intan
131	T131	40	3.88945478	100.8692827	Majlis Perbandaran Teluk Intan
132	T132	40	3.88930927	100.8693323	Majlis Perbandaran Teluk Intan

4.0 SITE PHOTOS - PROPOSED NEW POLE



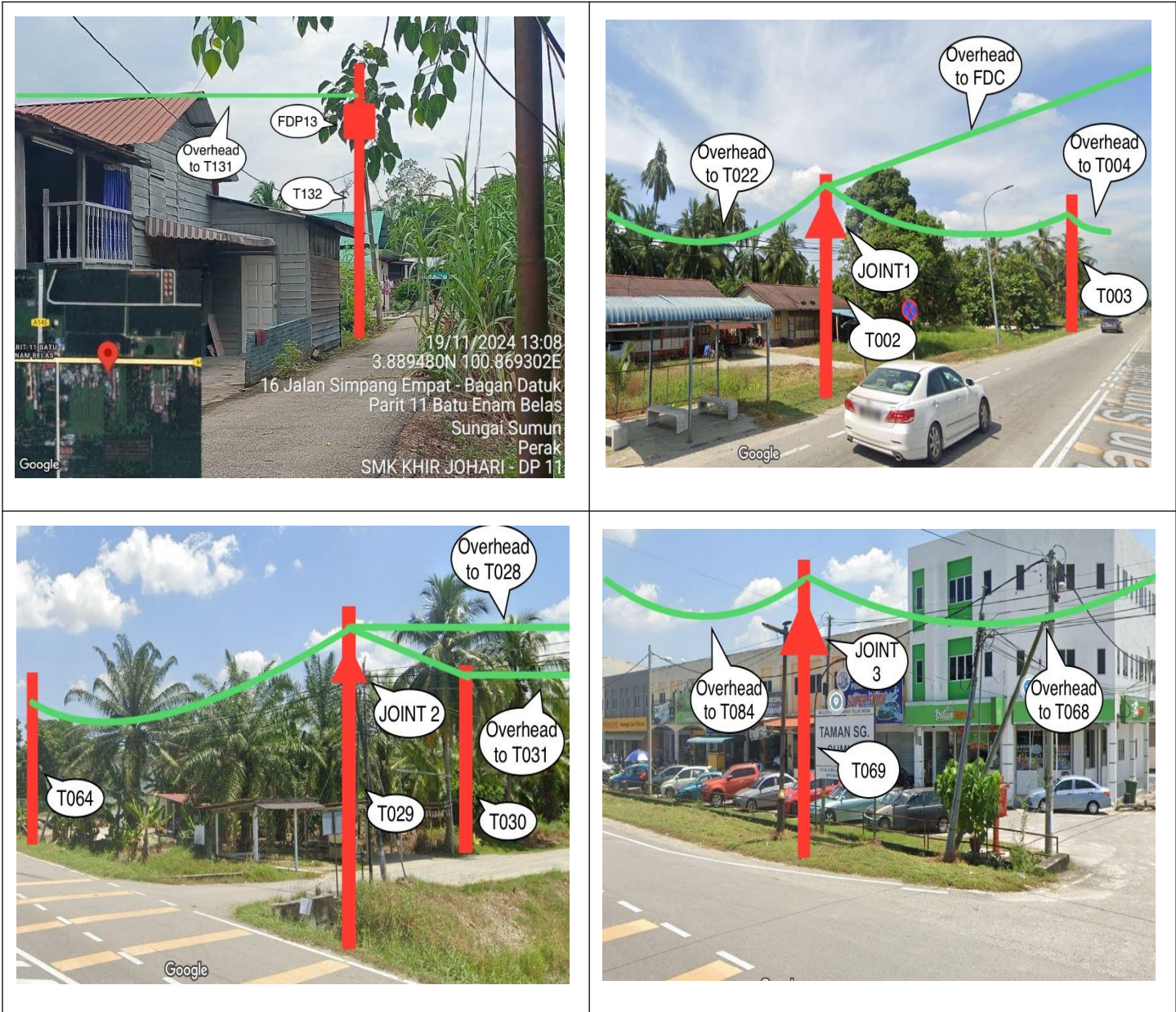
4.0 SITE PHOTOS - PROPOSED NEW POLE



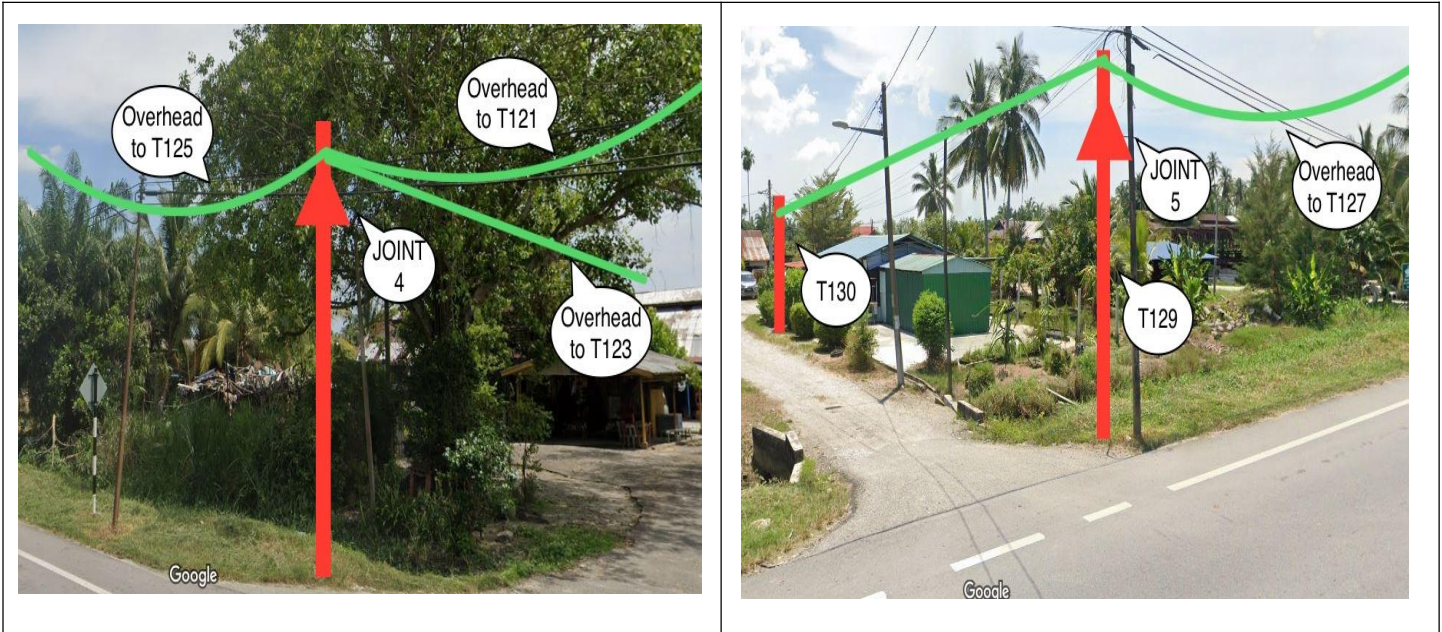
4.0 SITE PHOTOS - PROPOSED NEW POLE



4.0 SITE PHOTOS - PROPOSED NEW POLE



4.0 SITE PHOTOS - PROPOSED NEW POLE



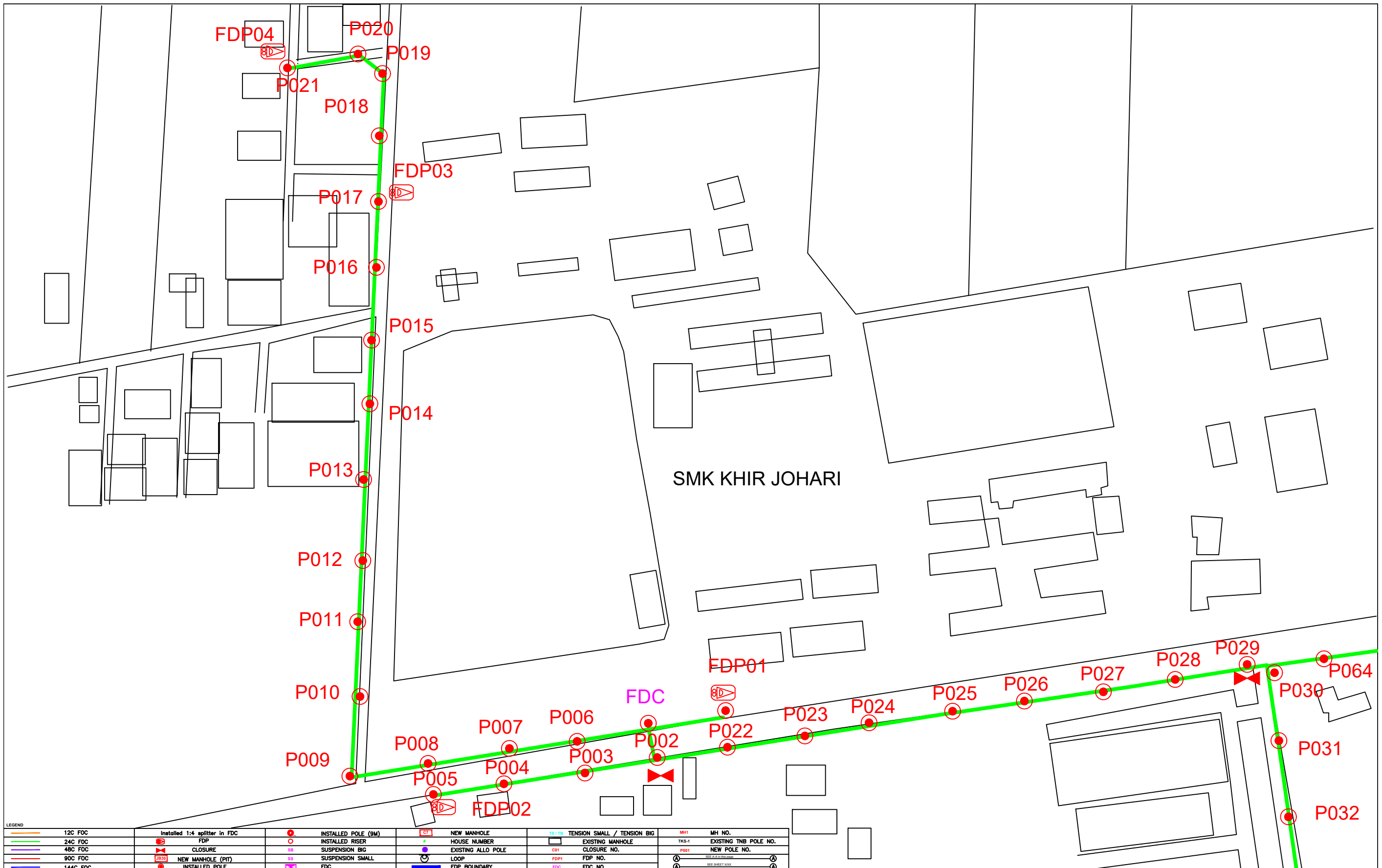


PROJEK PENYEDIAAN DAN PENYELENGGARAAN POINT OF PRESENCE (POP) FASA 2: HAB INFRASTRUKTUR GENTIAN OPTIK BERHAMPIRAN DENGAN SEKOLAH, KAWASAN PERINDUSTRIAN, PREMIS KERAJAAN DAN KOMUNITI SEKITARNYA OLEH KEMENTERIAN KOMUNIKASI MALAYSIA – ZON UTARA (KKMM.400-11/17/132(1))



5.0 3rd PARTIES DEPENDENCIES

NO	LOCAL COUNCIL / AUTHORITY	REMARK
1	Majlis Perbandaran Teluk Intan	2,278M
2	JKR Hilir Perak	2,358M



LEGEND		NEW MANHOLE		TENSION SMALL / TENSION BIG		MH NO.	
12C FOC	Installed 1:4 splitter in FDC	NEW MANHOLE	NEW MANHOLE	TS / TB	TENSION SMALL / TENSION BIG	MH1	MH NO.
24C FDC	FDP	HOUSE NUMBER	EXISTING MANHOLE	TKS-1	EXISTING MANHOLE	TKS-1	EXISTING TNB POLE NO.
48C FDC	CLOSURE	EXISTING ALLO POLE	CLOSURE NO.	CB1	CLOSURE NO.	P001	NEW POLE NO.
90C FDC	NEW MANHOLE (PIT)	LOOP	FDP1	FDP1	FDP NO.		
144C FDC	INSTALLED POLE	FDP BOUNDARY	FDC	FDC	FDC NO.		
	INSTALLED POLE (9M)						
	INSTALLED RISER						
	SUSPENSION BIG						
	SUSPENSION SMALL						
	FDC						

KEY PLAN	PROJECT OWNER 	MAIN CONTRACTOR PRIVASAT	SUB-CONTRACTOR 	PROJECT TITLE SEKOLAH MENENGAH KEBANGSAAN KHIR JOHARI	DRAWING TITLE TECHNICAL PROPOSAL (TP) DRAWING FOR SEKOLAH MENENGAH KEBANGSAAN KHIR JOHARI	DESIGN BY NABIL	DATE 30/11/2024
					PROJECT PHASE PROJECT PHASE 2	DRAWN BY NABIL	SCALE NOT TO SCALE
						CHECKED BY AZHAN HARI	JOB NUMBER AEEB001
						DRAWING NUMBER AEEB001	
						THIS PRINT AND ITS COPYRIGHT ARE THE PROPERTY OF KNZ ENGINEERING SDN. BHD.	
							A3

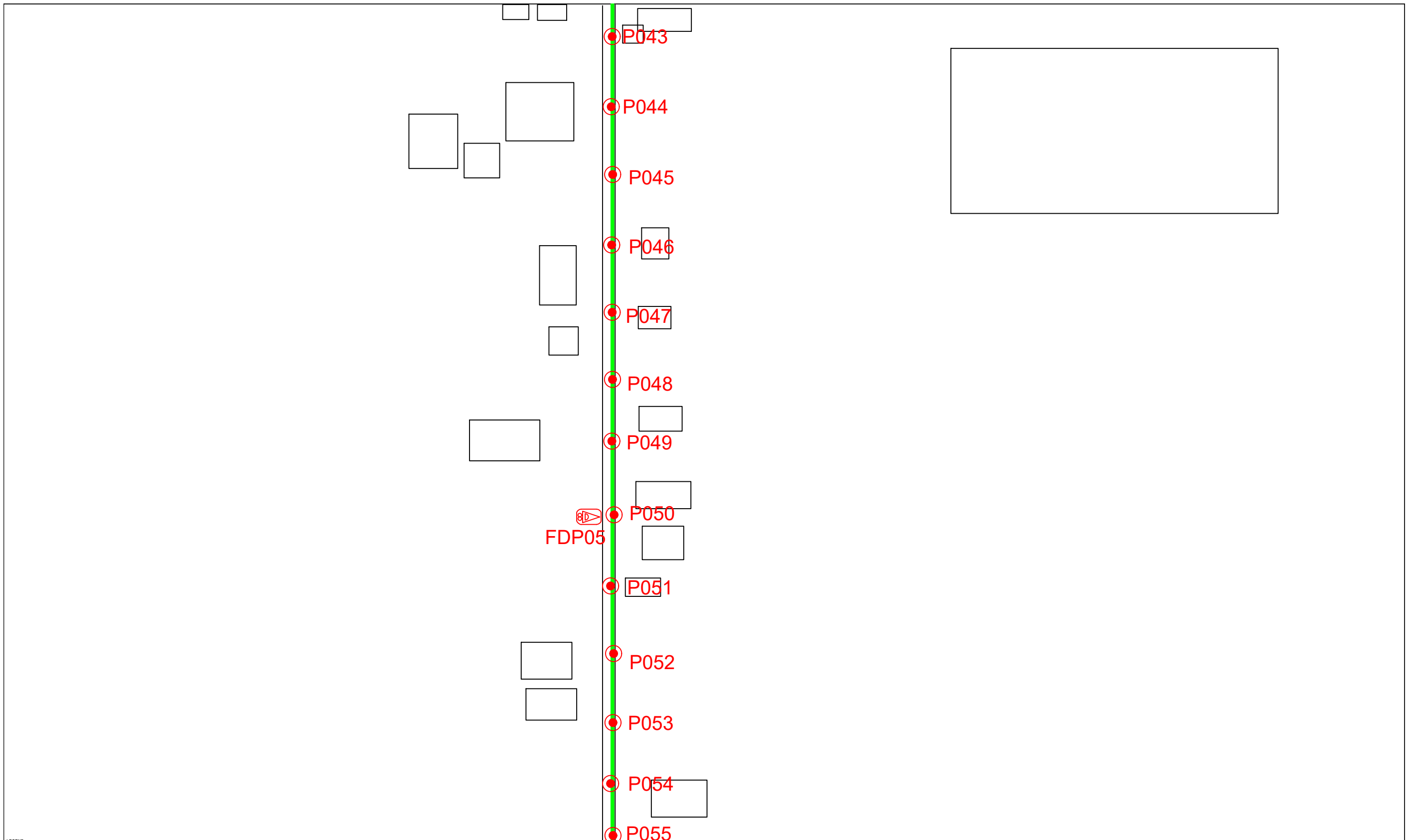
SMK KHIR JOHARI

SEKOLAH MENENGAH KEBANGSAAN
KHIR JOHARI

TECHNICAL PROPOSAL (TP) DRAWING
FOR SEKOLAH MENENGAH KEBANGSAAN
KHIR JOHARI

AEEB001

A3



LEGEND		NEW MANHOLE		TENSION SMALL / TENSION BIG		MH NO.	
12C FOC	Installed 1:4 splitter in FDC	INSTALLED POLE (9M)	NEW MANHOLE	TENSION SMALL	TENSION BIG	MH1	MH NO.
24C FOC	FDP	INSTALLED RISER	HOUSE NUMBER	EXISTING MANHOLE		TKS-1	EXISTING TNB POLE NO.
48C FOC	CLOSURE	SUSPENSION BIG	EXISTING ALLO POLE	CLOSURE NO.		P001	NEW POLE NO.
90C FOC	NEW MANHOLE (PIT)	SUSPENSION SMALL	LOOP	FDP1	FDP NO.		
144C FOC	INSTALLED POLE	FDC	FDP BOUNDARY	FDC	FDC NO.		

KEY PLAN

PROJECT OWNER

PROJECT OWNER

MAIN CONTRACTOR

SUB-CONTRACTOR

KNZ ENGINEERING SDN BHD
 NO. 60 & 60A, Jalan Klebang Indah 1, Medan Klebang Indah, 30100 Ipoh, Perak
 No Tel: 019-3695071
 Email: admin@knzengineering.com.my
 Website: www.knzengineering.com.my

PROJECT TITLE

SEKOLAH MENENGAH KEBANGSAAN KHIR JOHARI

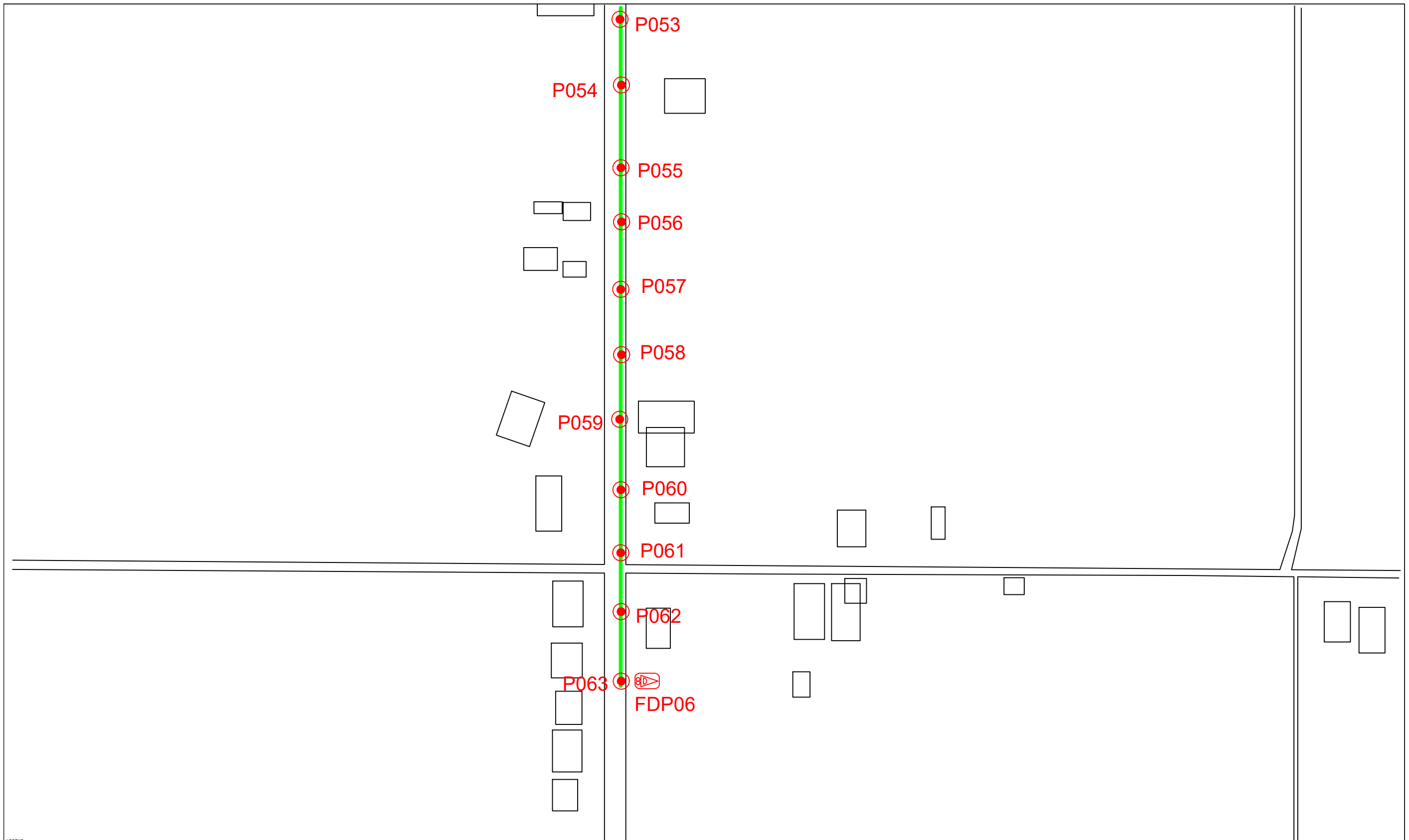
DRAWING TITLE

TECHNICAL PROPOSAL (TP) DRAWING FOR SEKOLAH MENENGAH KEBANGSAAN KHIR JOHARI

PROJECT PHASE

PROJECT PHASE 2


DESIGN BY	NABIL	DATE	30/11/2024
DRAWN BY	NABIL	SCALE	NOT TO SCALE
CHECKED BY	AZHAN HARIS	JOB NUMBER	AEEB001
DRAWING NUMBER	AEEB001		-
THIS PRINT AND ITS COPYRIGHT ARE THE PROPERTY OF KNZ ENGINEERING SDN. BHD.			A3




LEGEND	
12C FOC	Installed 1:4 splitter in FDC
24C FDC	FDP
48C FDC	CLOSURE
90C FDC	NEW MANHOLE (PIT)
144C FDC	INSTALLED POLE
INSTALLED POLE (9M)	INSTALLED RISER
SUSPENSION BIG	SUSPENSION SMALL
FDC	
NEW MANHOLE	HOUSE NUMBER
EXISTING ALLO POLE	LOOP
FDP BOUNDARY	
TENSION SMALL / TENSION BIG	EXISTING MANHOLE
CLOSURE NO.	FDP NO.
FDC NO.	
MH NO.	EXISTING TNB POLE NO.
NEW POLE NO.	

KEY PLAN

PROJECT OWNER




MAIN CONTRACTOR



PRIVASAT

SUB-CONTRACTOR



KNZ ENGINEERING SDN BHD
 NO. 60 & 60A, Jalan Klebang Indah 1, Medan Klebang Indah, 30100 Ipoh, Perak
 No Tel: 019-3695071
 Email: admin@knzengineering.com.my
 Website: www.knzengineering.com.my

PROJECT TITLE

SEKOLAH MENENGAH KEBANGSAAN KHIR JOHARI

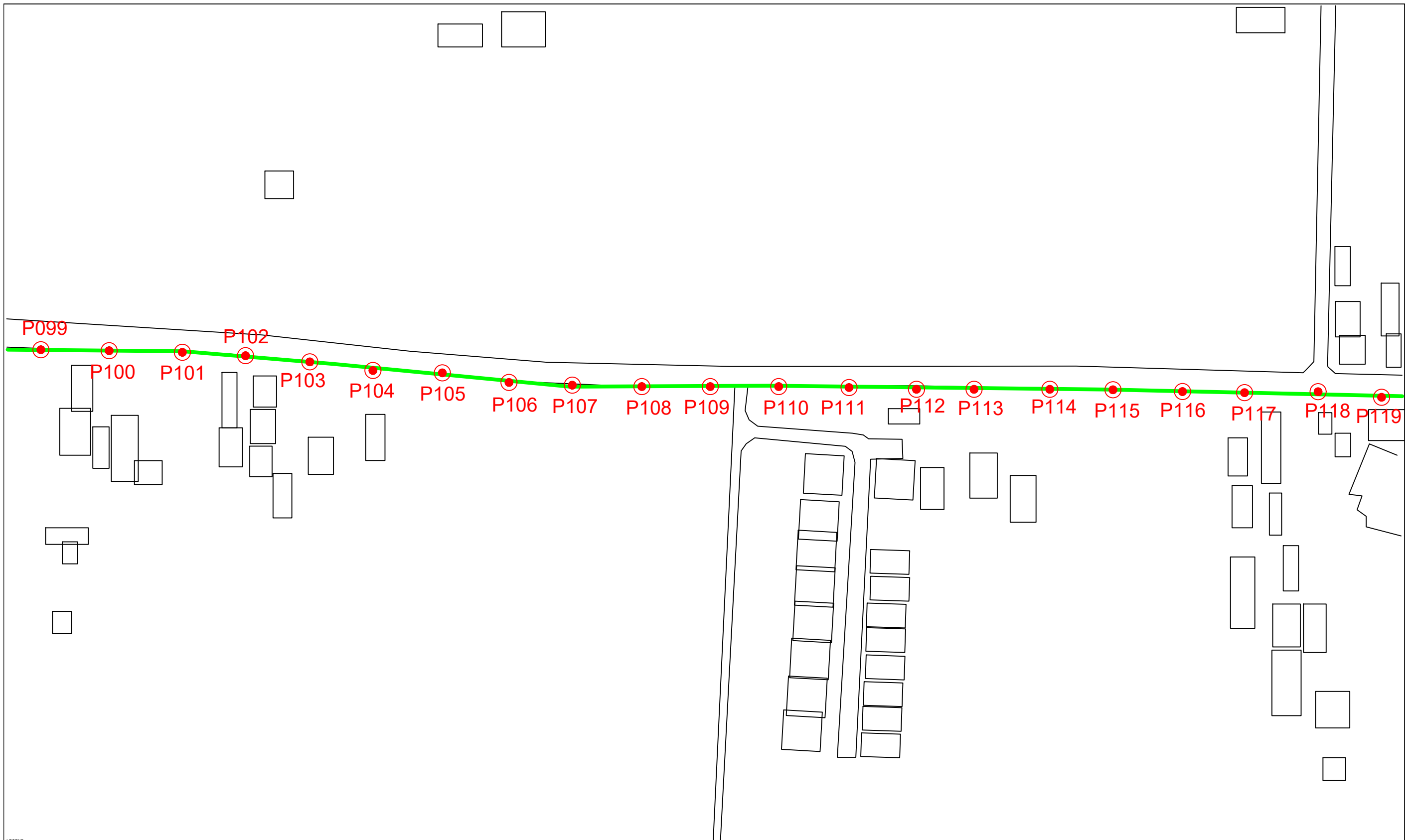
DRAWING TITLE

TECHNICAL PROPOSAL (TP) DRAWING FOR SEKOLAH MENENGAH KEBANGSAAN KHIR JOHARI

PROJECT PHASE

PROJECT PHASE 2

DESIGN BY	NABIL	DATE	30/11/2024
DRAWN BY	NABIL	SCALE	NOT TO SCALE
CHECKED BY	AZHAN HARI	JOB NUMBER	AEEB001
DRAWING NUMBER	AEEB001	SHEET	-
THIS PRINT AND ITS COPYRIGHT ARE THE PROPERTY OF KNZ ENGINEERING SDN. BHD.			A3



LEGEND							
12C FOC	Installed 1:4 splitter in FDC	INSTALLED POLE (9M)	NEW MANHOLE	TENSION SMALL / TENSION BIG	MH1	MH NO.	
24C FOC	FDP	INSTALLED RISER	HOUSE NUMBER	EXISTING MANHOLE	TKS-1	EXISTING TNB POLE NO.	
48C FOC	CLOSURE	SUSPENSION BIG	EXISTING ALLO POLE	CLOSURE NO.	PO01	NEW POLE NO.	
90C FOC	NEW MANHOLE (PIT)	SUSPENSION SMALL	LOOP	FDP1	FDP NO.		
144C FOC	INSTALLED POLE	FDC	FDP BOUNDARY	FDC	FDC NO.		

KEY PLAN

PROJECT OWNER

MAIN CONTRACTOR

SUB-CONTRACTOR

KNZ ENGINEERING SDN BHD
 NO. 60 & 60A, Jalan Klebang Indah 1, Medan Klebang Indah, 30100 Ipoh, Perak
 No Tel: 019-3695071
 Email: admin@knzengineering.com.my
 Website: www.knzengineering.com.my

PROJECT TITLE

SEKOLAH MENENGAH KEBANGSAAN KHIR JOHARI

DRAWING TITLE

TECHNICAL PROPOSAL (TP) DRAWING FOR SEKOLAH MENENGAH KEBANGSAAN KHIR JOHARI

PROJECT PHASE

PROJECT PHASE 2

DESIGN BY	NABIL	DATE	30/11/2024
DRAWN BY	NABIL	SCALE	NOT TO SCALE
CHECKED BY	AZHAN HARI	JOB NUMBER	AEEB001
DRAWING NUMBER	AEEB001		
THIS PRINT AND ITS COPYRIGHT ARE THE PROPERTY OF KNZ ENGINEERING SDN. BHD.			A3



LEGEND					
12C FOC	Installed 1:4 splitter in FDC	INSTALLED POLE (9M)	NEW MANHOLE	TENSION SMALL / TENSION BIG	MH1 MH NO.
24C FOC	FDP	INSTALLED RISER	HOUSE NUMBER	EXISTING MANHOLE	TKS-1 EXISTING TNB POLE NO.
48C FOC	CLOSURE	SUSPENSION BIG	EXISTING ALLO POLE	CLOSURE NO.	PO01 NEW POLE NO.
90C FOC	NEW MANHOLE (PIT)	SUSPENSION SMALL	LOOP	FDP1 FDP NO.	SEE A.A.D. SHEET
144C FOC	INSTALLED POLE	FDC	FDP BOUNDARY	FDC FDC NO.	SEE SHEET 100K

KEY PLAN	PROJECT OWNER 	MAIN CONTRACTOR 	SUB-CONTRACTOR 	PROJECT TITLE SEKOLAH MENENGAH KEBANGSAAN KHIR JOHARI	DRAWING TITLE TECHNICAL PROPOSAL (TP) DRAWING FOR SEKOLAH MENENGAH KEBANGSAAN KHIR JOHARI	DESIGN BY NABIL	DATE 30/11/2024
			KNZ ENGINEERING SDN BHD NO. 60 & 60A, Jalan Klebang Indah 1, Medan Klebang Indah, 30100 Ipoh, Perak No Tel: 019-3695071 Email: admin@knzengineering.com.my Website: www.knzengineering.com.my		PROJECT PHASE PROJECT PHASE 2	DRAWN BY NABIL	SCALE NOT TO SCALE
						CHECKED BY AZHAN HARISS	JOB NUMBER AEEB001
						DRAWING NUMBER AEEB001	SHEET -
						THIS PRINT AND ITS COPYRIGHT ARE THE PROPERTY OF KNZ ENGINEERING SDN. BHD.	
							A3