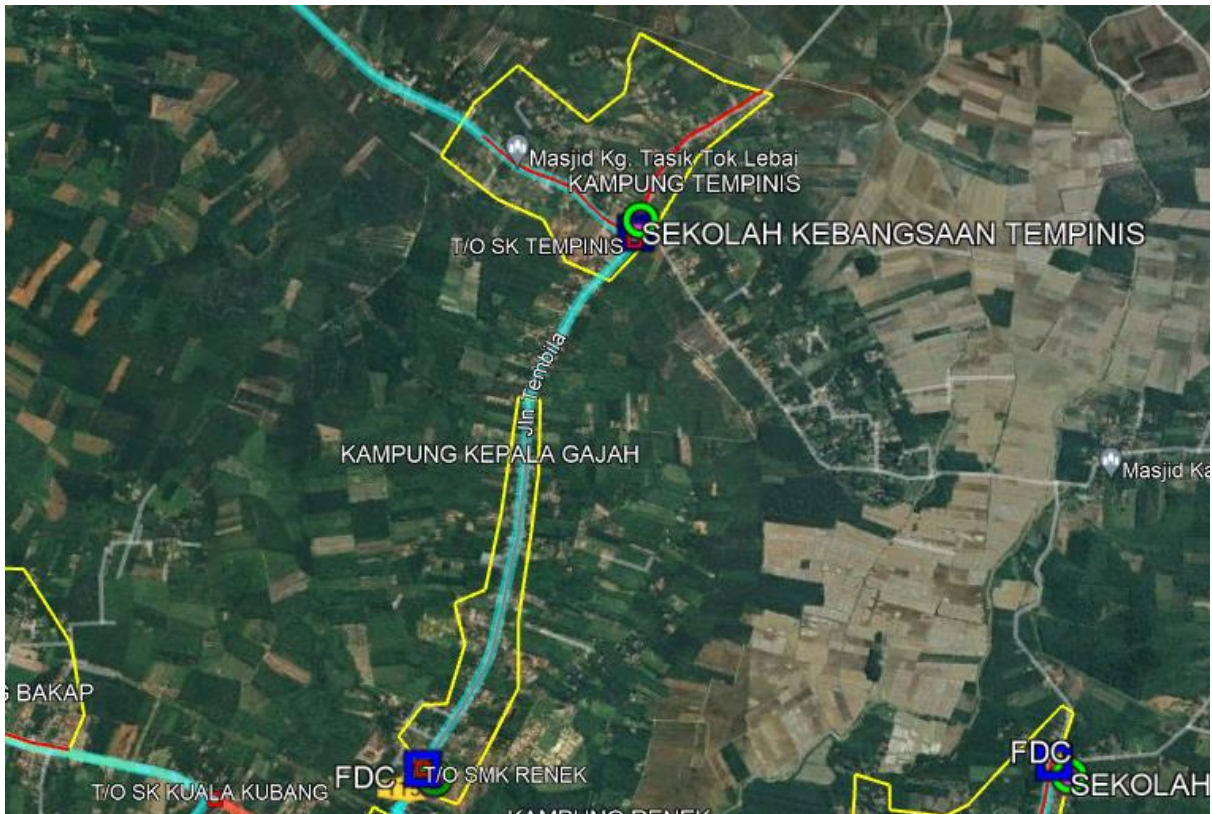


2.0 BUTIRAN JALAN TERLIBAT

| 2.1 | NAMA JALAN | DAERAH | KAEDAH KERJA | KOORDINAT MULA | KOORDINAT AKHIR | JARAK (METER) |
|-------------------------|-------------------------------------|--------|---|-------------------------|-------------------------|--------------------------|
| | JALAN TEMBILA | BESUT | Plinth | 5.700221, 102.607761 | | 1 X 1 Meter |
| | JALAN TEMBILA | BESUT | Kabinet | 5.700221, 102.607761 | | 1 X 1 Meter |
| | JALAN TEMBILA | BESUT | Aerial Fiber Routing Backhaul (Anggaran) | 5.700221, 102.607761 | 5.674019, 102.598451 | 3721 Meter (Anggaran) |
| | JALAN TEMBILA, JALAN SK TEMPINIS | BESUT | Aerial Fiber Routing GPON (Anggaran) | 5.700221, 102.607761 | 5.707414, 102.613806 | 1076 Meter (Anggaran) |
| | | | | | | |
| JUMLAH JARAK PERMOHONAN | | | | | | 4797 Meter |

CADANGAN TEKNIKAL UNTUK SEKOLAH KEBANGSAAN TEMPINIS



MAKLUMAT CADANGAN TEKNIKAL

| | |
|---|----------------------------------|
| Nama Site: | Sekolah Kebangsaan Tempinis |
| Site ID: | TBA0030 |
| Lokasi PoP Kabinet: | Jalan Tembila |
| GPS Koordinat: | 5.700221, 102.607761 |
| Lokasi Laluan Fiber | Jalan Tembila, Jalan Sk Tempinis |
| GPS Koordinat Backhaul: (Titik Mula-Anggaran) | 5.700221, 102.607761 |
| GPS Koordinat Backhaul: (Titik Akhir-Anggaran) | 5.674019, 102.598451 |
| GPS Koordinat GPON: (Titik Mula-Anggaran) | 5.700221, 102.607761 |
| GPS Koordinat GPON: (Titik Akhir-Anggaran) | 5.707414, 102.613806 |
| Tarikh: | 27/02/2024 |

Kandungan:

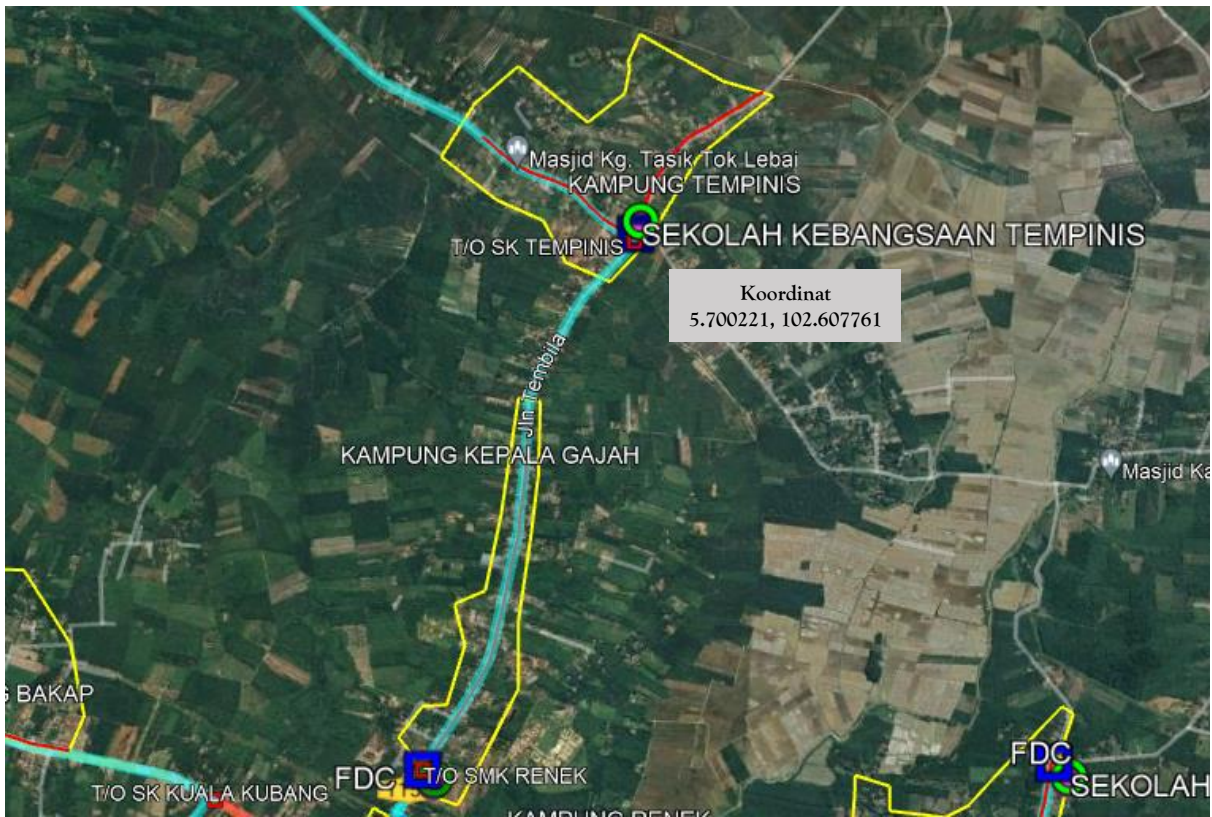
1. Ringkasan Pelaksanaan
2. Peta Penandaan Lokasi (Plinth Kabinet)
3. Gambar Lokasi (*Plinth* Kabinet)
4. Cadangan Laluan Kabel Fiber Pole
5. Cadangan Jadual & Skop Kerja Pelaksanaan PoP *Plinth* Kabinet
6. Cadangan Jadual & Skop Kerja Pelaksanaan Fiber

1. RINGKASAN PELAKSANAAN

1.1 Cadangan Pelaksanaan

| Bil | Perkara | Kuantiti |
|-----|---|----------|
| 1 | PoP <i>Plinth</i> Kabinet Satu (1) unit | 1 |
| 2 | Jumlah Cadangan Fiber Pole 133 poles | 133 |
| 3 | Jumlah Jarak Fiber Pole (Anggaran) Backhul - 3721m GPON - 1076m | 4797m |

2. PETA PENANDAAN LOKASI *PLINTH* KABINET (PoP)



 SEKOLAH KEBANGSAAN TEMPINIS (TBA0030)

 POP







3. GAMBAR LOKASI *PLINTH* KABINET (PoP)



4. CADANGAN LALUAN KABEL FIBER POLE (ANGGARAN)


Backhaul



-  Kawasan Sempadan Fiber Servis
-  Laluan Kabel Fiber (Main GPON)
-  Laluan Kabel Fiber (Backhaul)
-  Laluan Kabel Fiber (Under Ground)
-  Sekolah
-  POP
-  Titik Mula Fiber
-  Titik Akhir Fiber

GPON



-  Kawasan Sempadan Fiber Servis
-  Laluan Kabel Fiber (Main GPON)
-  Laluan Kabel Fiber (Backhaul)
-  Laluan Kabel Fiber (Under Ground)
-  Sekolah
-  POP
-  Titik Mula Fiber
-  Titik Akhir Fiber

**5. CADANGAN JADUAL & SKOP KERJA AWAL
PELAKSANAAN
PoP *PLINTH*KABINET**

| Bil | Perkara | Hari | 1 | 2 | 3 | 4 | 5 | 6 | 7 | 8 | 9 | 10 | 11 | 12 | 13 | 14 |
|-----|--|------|---|---|---|---|---|---|---|---|---|----|----|----|----|----|
| 1 | <u>Kerja Civil, Teknikal dan, Elektrikal</u> | | | | | | | | | | | | | | | |
| 1.1 | Persiapan di Tapak | 1 | | | | | | | | | | | | | | |
| 1.2 | Kerja Pemasangan <i>Plinth</i> PoP | 1 | | | | | | | | | | | | | | |
| 1.3 | Kerja Pemasangan Kabinet, FDC & rectifier | 1 | | | | | | | | | | | | | | |

6. CADANGAN JADUAL & SKOP KERJA PELAKSANAAN FIBER

| Bil | Perkara | Bulan /Minggu | | | | | | | | | | | | | | | |
|-----|---|---------------|---|---|------------|---|---|------------|---|------------|---|---|---|---|--|--|---|
| | | Apr 2024 | | | Mei 2024 | | | Jun 2024 | | | | | | | | | |
| | | Minggu 3-4 | | | Minggu 1-4 | | | Minggu 1-2 | | Minggu 3-4 | | | | | | | |
| 1 | Persiapan di Tapak | ■ | | | | | | | | | | | | | | | |
| 2 | Kerja Pengesahan Kabel | ■ | | | | | | | | | | | | | | | |
| 3 | Kerja Pengorekan | | ■ | ■ | | | | | | | | | | | | | |
| 4 | Kerja Rentang Kabel | | | | ■ | ■ | ■ | | | | | | | | | | |
| 5 | Kerja Menimbus Tanah | | | | | | | ■ | ■ | | | | | | | | |
| 6 | Kerja Penurapan Jalan/Pembersihan Tapak | | | | | | | | | ■ | ■ | | | | | | |
| 7 | <i>Integration, Testing & Commissioning</i> | | | | | | | | | | | ■ | ■ | ■ | | | |
| 8 | Selesai | | | | | | | | | | | | | | | | ■ |

-Tamat-