

TECHNICAL PROPOSAL

POP2 ABA5014 SEKOLAH KEBANGSAAN SUNGAI RUSA (D-SIDE)

Company Name : KNZ ENGINEERING SDN BHD.
Company Address : NO 60 & 60 A JALAN KLEBANG INDAH 1 MEDAN KLEBANG INDAH 30010 IPOH PERAK
Prepared By : SEVANTHI A/P SELVAM
Date : 23/12/2024



Starting Point

Site / Boundary Name : Teluk Intan
Address : SK Sungai Rusa, No. 1, Kampung Sungai Ranggam, Perak, 36000 Teluk Intan, Perak
District : Teluk Intan
Postcode : 36000
State : Perak
GPS Coordinate : 3.99525541714815, 100.91140322951
LRD : A

End Point

Site / Boundary Name : Teluk Intan
Address : Kampung Permatang Guntong, 36010 Teluk Intan, Perak
District : Teluk Intan
Postcode : 36020
State : Perak
GPS Coordinate : 4.00546412394279, 100.928665453843
LRD : B



PROJEK PENYEDIAAN DAN PENYELENGGARAAN POINT OF PRESENCE (POP) FASA 2: HAB INFRASTRUKTUR GENTIAN OPTIK BERHAMPIRAN DENGAN SEKOLAH, KAWASAN PERINDUSTRIAN, PREMIS KERAJAAN DAN KOMUNITI SEKITARNYA OLEH KEMENTERIAN KOMUNIKASI MALAYSIA – ZON UTARA (KKMM.400-11/17/132(1))



1.0 WORK SUMMARY

NO	PROPOSED DISTANCE AND METHOD	UNIT	QUANTITY
1	Horizontal Directional Drilling (HDD)	m	60m
2	Carriage Way Open Trench (CW)	m	0
3	Grass Verge Open Trenching (GV)	m	6m
4	Micro Trenching (MT)	m	0
Total			0

NO	OTHER INFORMATION	UNIT	QUANTITY
1	Installation of Short Span ADSS Fibre Cables	m	9460
2	Install New Pole	ea	219
3	Install New JRC7 Manhole	ea	2
4	Install GI Riser 100mm	ea	0
5	Install Fiber Distribution Point	ea	14
6	Install Closure	ea	5
7	Estimated Time Required for Completion	days	30

2.0 LOCAL AUTHORITY SUMMARY

Daerah Hilir Perak

Bil	Items	Owner	Quantity	Distance
1	HDD	JKR	1	60m
		Majlis	-	-
		Estate / Private Land	-	-
2	New Pole	JKR	114	4720m
		Majlis	105	4280m
		Estate / Private Land	-	-
3	Existing TNB Pole	JKR	-	-
		Majlis	-	-
		Estate / Private Land	-	-
Total				9000m

Site Plan -KMZ (Overview site area)

Proposed FDP , Manhole and Closure



Site Plan - KMZ Routing (All Local Authority)



Red Colour – JKR Road

Blue Colour - Majlis Road

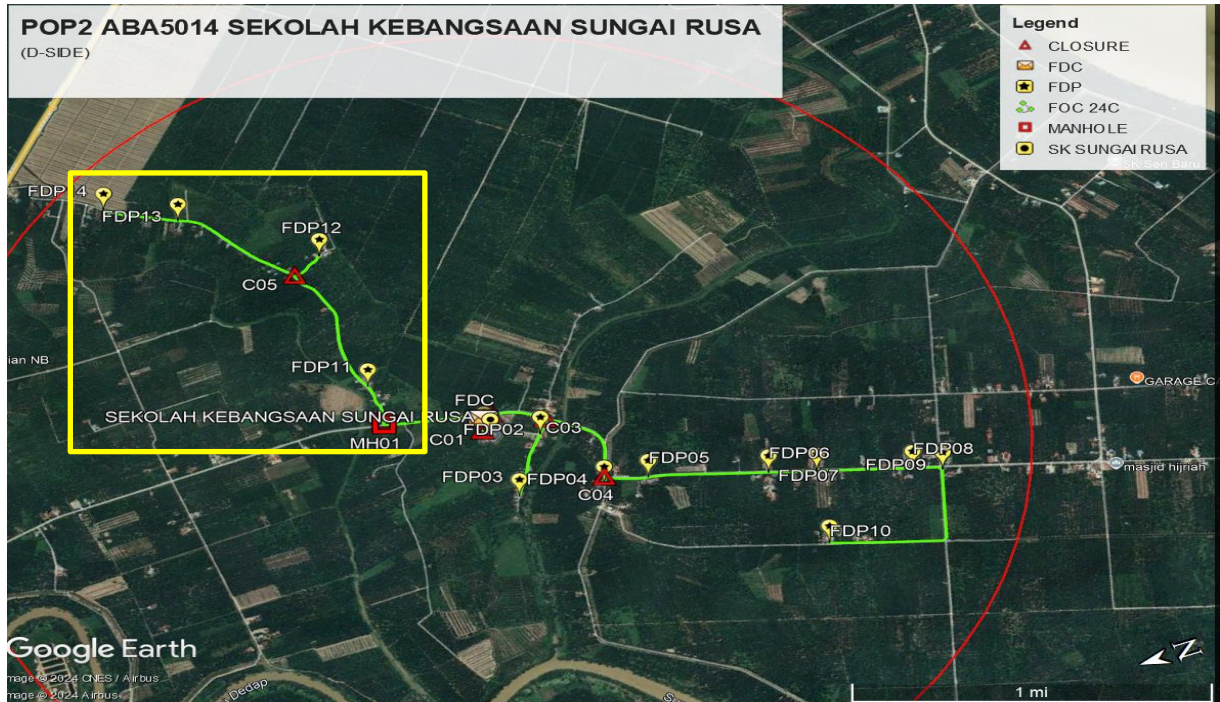
Site Plan – KMZ Routing (All site area)

Route 1



Route 1.1

Route 2



Route 2.1

3.0 PROPOSED NEW POLE

Proposed New Pole Coordinate					
No.	Pole Number	Distance (m)	Latitude-Y	Longitude-X	Local Authority
1	T001	40	3.99525541714815	100.91140322951	Majlis Perbandaran Teluk Intan
2	T002	40	3.99517392174609	100.911481796892	Majlis Perbandaran Teluk Intan
3	T003	40	3.9949399795266	100.911737207633	Majlis Perbandaran Teluk Intan
4	T004	40	3.99474460207847	100.911980489271	Majlis Perbandaran Teluk Intan
5	T005	40	3.99457573683341	100.912116638363	Majlis Perbandaran Teluk Intan
6	T006	40	3.99437201862459	100.912099814684	JKR Hilir Perak
7	T007	40	3.99413202239677	100.912040152244	JKR Hilir Perak
8	T008	40	3.99386608217904	100.911976390729	JKR Hilir Perak
9	T009	40	3.99364492788849	100.911885974911	JKR Hilir Perak
10	T010	40	3.99338535395249	100.911751498195	JKR Hilir Perak
11	T011	40	3.99315656438635	100.911591370283	JKR Hilir Perak
12	T012	40	3.99295804702217	100.911440360971	JKR Hilir Perak
13	T013	40	3.99281503080753	100.911308544848	JKR Hilir Perak
14	T014	40	3.99263393803647	100.911158202948	JKR Hilir Perak
15	T015	40	3.99260024939994	100.91104336477	Majlis Perbandaran Teluk Intan
16	T016	40	3.9927147041849	100.910876322096	Majlis Perbandaran Teluk Intan
17	T017	40	3.9928074584993	100.910749784987	Majlis Perbandaran Teluk Intan
18	T018	40	3.99290638309428	100.910614583622	Majlis Perbandaran Teluk Intan
19	T019	40	3.99310084663481	100.910395168426	Majlis Perbandaran Teluk Intan
20	T020	40	3.99330924242907	100.910156630587	Majlis Perbandaran Teluk Intan
21	T021	40	3.993504444680294	100.90992837807	Majlis Perbandaran Teluk Intan
22	T022	40	3.99378550690015	100.909627507685	Majlis Perbandaran Teluk Intan
23	T023	40	3.99395081542337	100.909386256405	Majlis Perbandaran Teluk Intan
24	T024	40	3.99423446261348	100.908887852017	Majlis Perbandaran Teluk Intan
25	T025	40	3.99446689740852	100.90845008999	Majlis Perbandaran Teluk Intan
26	T026	40	3.99470798585475	100.908135805708	Majlis Perbandaran Teluk Intan
27	T027	40	3.99493161718783	100.907855558099	Majlis Perbandaran Teluk Intan
28	T028	40	3.99513148298396	100.907564098308	Majlis Perbandaran Teluk Intan
29	T029	40	3.99249342702058	100.91100335699	JKR Hilir Perak
30	T030	40	3.99230549445865	100.910859910378	JKR Hilir Perak
31	T031	40	3.99209248376127	100.910700582974	JKR Hilir Perak
32	T032	40	3.99189133296196	100.91050270467	JKR Hilir Perak
33	T033	40	3.99175711526046	100.910379966165	JKR Hilir Perak
34	T034	40	3.99146570804284	100.910143193785	JKR Hilir Perak
35	T035	40	3.99122797866089	100.909890999612	JKR Hilir Perak
36	T036	40	3.99104455050938	100.909676079516	JKR Hilir Perak
37	T037	40	3.99090908050339	100.909362872673	JKR Hilir Perak
38	T038	40	3.9908667636082	100.909160388687	JKR Hilir Perak
39	T039	40	3.99087804968273	100.908901098027	JKR Hilir Perak
40	T040	40	3.99093443805864	100.908653286762	JKR Hilir Perak

3.0 PROPOSED NEW POLE

Proposed New Pole Coordinate					
No.	Pole Number	Distance (m)	Latitude	Longitude	Local Authority
41	T041	40	3.99103458784445	100.908389030312	JKR Hilir Perak
42	T042	40	3.9911347235792	100.908149863292	JKR Hilir Perak
43	T043	40	3.99122887132292	100.907939595689	JKR Hilir Perak
44	T044	40	3.99130023370477	100.907784934979	JKR Hilir Perak
45	T045	40	3.99137672410418	100.907617313182	JKR Hilir Perak
46	T046	40	3.99144347315533	100.907458003654	JKR Hilir Perak
47	T047	40	3.99142230705734	100.907186020785	JKR Hilir Perak
48	T048	40	3.99152149375357	100.907223899476	JKR Hilir Perak
49	T049	40	3.99167378190064	100.906917226879	Majlis Perbandaran Teluk Intan
50	T050	40	3.99128225492062	100.907094972502	Majlis Perbandaran Teluk Intan
51	T051	40	3.99113294475104	100.907018570258	Majlis Perbandaran Teluk Intan
52	T052	40	3.99096026460981	100.90694834367	Majlis Perbandaran Teluk Intan
53	T053	40	3.99079032736405	100.906879916735	Majlis Perbandaran Teluk Intan
54	T054	40	3.9906433906605	100.906815945726	Majlis Perbandaran Teluk Intan
55	T055	40	3.99047396063493	100.906746399043	Majlis Perbandaran Teluk Intan
56	T056	40	3.99033746300584	100.906699138162	Majlis Perbandaran Teluk Intan
57	T057	40	3.99021423953605	100.906649392575	Majlis Perbandaran Teluk Intan
58	T058	40	3.99008330016885	100.906606747473	Majlis Perbandaran Teluk Intan
59	T059	40	3.98986418917735	100.906568065208	Majlis Perbandaran Teluk Intan
60	T060	40	3.98967913270402	100.906536796042	Majlis Perbandaran Teluk Intan
61	T061	40	3.98952089622903	100.906504265016	Majlis Perbandaran Teluk Intan
62	T062	40	3.98936453688831	100.906463507123	Majlis Perbandaran Teluk Intan
63	T063	40	3.98923079870528	100.906431123099	JKR Hilir Perak
64	T064	40	3.98912095524223	100.906387406778	JKR Hilir Perak
65	T065	40	3.98898986616255	100.906354285641	JKR Hilir Perak
66	T066	40	3.98887038968175	100.906315134864	JKR Hilir Perak
67	T067	40	3.98869951186775	100.906256947638	JKR Hilir Perak
68	T068	40	3.98854750016892	100.906196868604	JKR Hilir Perak
69	T069	40	3.98836275316758	100.90613273395	JKR Hilir Perak
70	T070	40	3.98815933805554	100.906062797081	JKR Hilir Perak
71	T071	40	3.98793187683044	100.905987014788	JKR Hilir Perak
72	T072	40	3.98770004727409	100.905891417578	JKR Hilir Perak
73	T073	40	3.98740663863958	100.905791204442	JKR Hilir Perak
74	T074	40	3.98719620305013	100.9057193283	JKR Hilir Perak
75	T075	40	3.98699457126372	100.905639509055	JKR Hilir Perak
76	T076	40	3.98676949738421	100.905561017617	JKR Hilir Perak
77	T077	40	3.98654625897165	100.905473091912	JKR Hilir Perak
78	T078	40	3.98633190512043	100.905394502167	JKR Hilir Perak

3.0 PROPOSED NEW POLE

Proposed New Pole Coordinate					
No.	Pole Number	Distance (m)	Latitude	Longitude	Local Authority
79	T079	40	3.98608348439617	100.905315864416	JKR Hilir Perak
80	T080	40	3.98586600074608	100.905237384709	JKR Hilir Perak
81	T081	40	3.98566450692911	100.905153603101	JKR Hilir Perak
82	T082	40	3.98545770309928	100.905084353442	JKR Hilir Perak
83	T083	40	3.98521993366269	100.904980849691	JKR Hilir Perak
84	T084	40	3.98497271574187	100.904899439027	JKR Hilir Perak
85	T085	40	3.9847541557068	100.904829399386	JKR Hilir Perak
86	T086	40	3.984513434489	100.904743892647	JKR Hilir Perak
87	T087	40	3.98429872042773	100.904671838326	JKR Hilir Perak
88	T088	40	3.98409021141005	100.904602851634	JKR Hilir Perak
89	T089	40	3.98390231361602	100.904532809361	JKR Hilir Perak
90	T090	40	3.9837017047893	100.904460632237	JKR Hilir Perak
91	T091	40	3.98352083896742	100.904399212093	JKR Hilir Perak
92	T092	40	3.98333912114551	100.904337170579	JKR Hilir Perak
93	T093	40	3.98314267044325	100.904272324147	JKR Hilir Perak
94	T094	40	3.98298399627471	100.904201708479	JKR Hilir Perak
95	T095	40	3.98276232519843	100.904125909818	JKR Hilir Perak
96	T096	40	3.98260272368255	100.90406531226	JKR Hilir Perak
97	T097	40	3.98243851397457	100.904010286729	JKR Hilir Perak
98	T098	40	3.9821967572055	100.90392237557	JKR Hilir Perak
99	T099	40	3.98198423988795	100.903848145939	JKR Hilir Perak
100	T100	40	3.98177254602902	100.903772713042	JKR Hilir Perak
101	T101	40	3.98159218222847	100.903710919937	JKR Hilir Perak
102	T102	40	3.98141137485334	100.90365069905	JKR Hilir Perak
103	T103	40	3.9812310970002	100.903587349215	JKR Hilir Perak
104	T104	40	3.9811186491379	100.903539061411	JKR Hilir Perak
105	T105	40	3.98102662842144	100.90351632368	JKR Hilir Perak
106	T106	40	3.98088056798591	100.903460350233	JKR Hilir Perak
107	T107	40	3.98072850810252	100.903419178946	JKR Hilir Perak
108	T108	40	3.98057638130435	100.903345986788	JKR Hilir Perak
109	T109	40	3.98037026569411	100.903289783555	JKR Hilir Perak

3.0 PROPOSED NEW POLE

Proposed New Pole Coordinate					
No.	Pole Number	Distance (m)	Latitude	Longitude	Local Authority
110	T110	40	3.98020714106885	100.903242510841	JKR Hilir Perak
111	T111	40	3.98002363468925	100.903149791976	JKR Hilir Perak
112	T112	40	3.97980347607513	100.903081178979	JKR Hilir Perak
113	T113	40	3.9796361512692	100.903006399881	JKR Hilir Perak
114	T114	40	3.97936245099382	100.902931864588	JKR Hilir Perak
115	T115	40	3.97911399194895	100.902842995822	JKR Hilir Perak
116	T116	40	3.97890837493941	100.902768515197	JKR Hilir Perak
117	T117	40	3.97856629038811	100.902646799134	JKR Hilir Perak
118	T118	40	3.97852759830586	100.902499115769	Majlis Perbandaran Teluk Intan
119	T119	40	3.97868046227826	100.902100053642	Majlis Perbandaran Teluk Intan
120	T120	40	3.97880380663785	100.901758268006	Majlis Perbandaran Teluk Intan
121	T121	40	3.97891459233506	100.901477260924	Majlis Perbandaran Teluk Intan
122	T122	40	3.9790075665055	100.901207475841	Majlis Perbandaran Teluk Intan
123	T123	40	3.97908852839448	100.90093398157	Majlis Perbandaran Teluk Intan
124	T124	40	3.97918386030705	100.900701352797	Majlis Perbandaran Teluk Intan
125	T125	40	3.97927890594822	100.900442078673	Majlis Perbandaran Teluk Intan
126	T126	40	3.97935473290033	100.900184888557	Majlis Perbandaran Teluk Intan
127	T127	40	3.97949720564634	100.899833649678	Majlis Perbandaran Teluk Intan
128	T128	40	3.97962457864648	100.899449629824	Majlis Perbandaran Teluk Intan
129	T129	40	3.9797735586526	100.899043292537	Majlis Perbandaran Teluk Intan
130	T130	40	3.9799685510891	100.898942227845	Majlis Perbandaran Teluk Intan
131	T131	40	3.98018422427591	100.899016018243	Majlis Perbandaran Teluk Intan
132	T132	40	3.98049106240143	100.899137076306	Majlis Perbandaran Teluk Intan
133	T133	40	3.98085036551071	100.89926474371	Majlis Perbandaran Teluk Intan
134	T134	40	3.98127807801527	100.899407565047	Majlis Perbandaran Teluk Intan
135	T135	40	3.981753499377	100.899592505027	Majlis Perbandaran Teluk Intan
136	T136	40	3.98226285138972	100.899784465846	Majlis Perbandaran Teluk Intan
137	T137	40	3.9827046463825	100.899967011048	Majlis Perbandaran Teluk Intan
138	T138	40	3.98309249871708	100.900071930822	Majlis Perbandaran Teluk Intan
139	T139	40	3.98342500713101	100.900209648688	Majlis Perbandaran Teluk Intan
140	T140	40	3.98368953678817	100.900294585178	Majlis Perbandaran Teluk Intan
141	T141	40	3.98393591038946	100.900387380104	Majlis Perbandaran Teluk Intan
142	T142	40	3.9841496174371	100.900437246045	Majlis Perbandaran Teluk Intan
143	T143	40	3.98434663873334	100.900545074072	Majlis Perbandaran Teluk Intan
144	T144	40	3.99477593930462	100.912192185266	JKR Hilir Perak
145	T145	40	3.99502697159335	100.912242977933	JKR Hilir Perak
146	T146	40	3.99530931816793	100.912315876768	JKR Hilir Perak
147	T147	40	3.99560501178888	100.912388185278	JKR Hilir Perak
148	T148	40	3.99590452141004	100.912453540804	JKR Hilir Perak

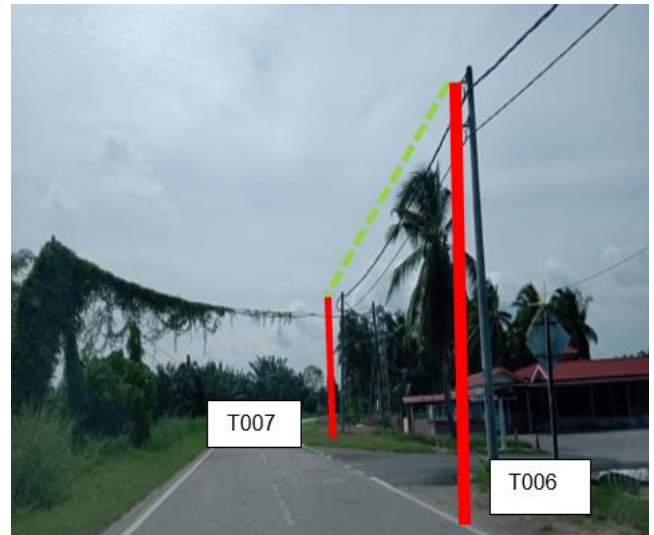
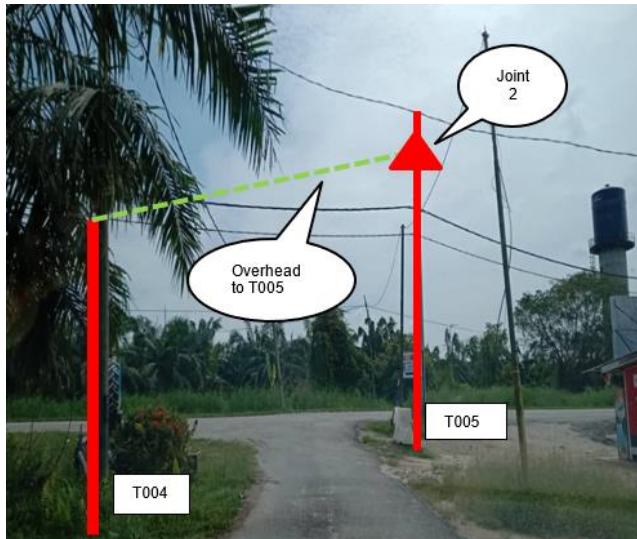
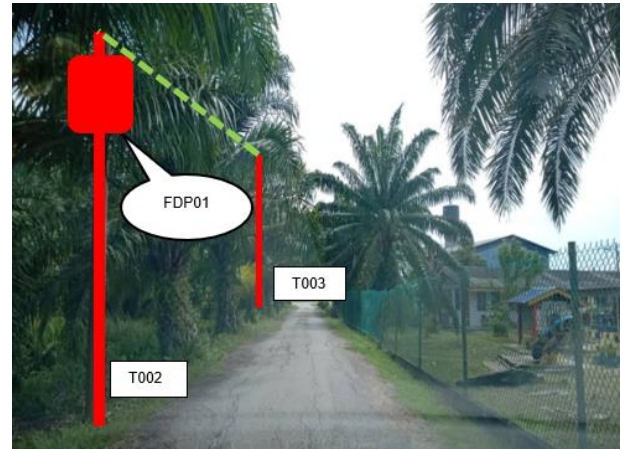
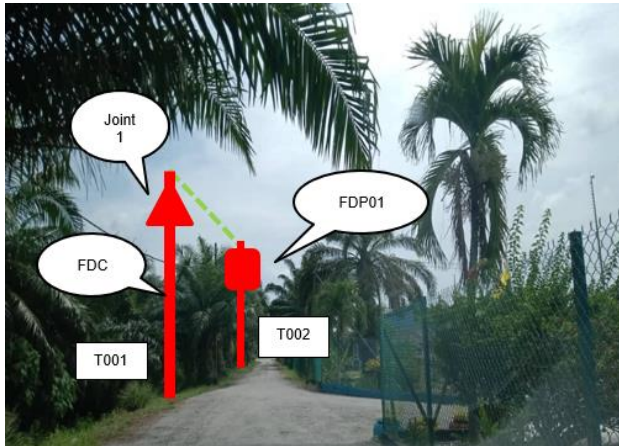
3.0 PROPOSED NEW POLE

Proposed New Pole Coordinate					
No.	Pole Number	Distance (m)	Latitude	Longitude	Local Authority
149	T149	40	3.99620581038602	100.912523693449	JKR Hilir Perak
150	T150	40	3.99647448131859	100.912584478325	JKR Hilir Perak
151	T151	40	3.99675393394403	100.912648005578	JKR Hilir Perak
152	T152	40	3.99703706444186	100.912715485267	JKR Hilir Perak
153	T153	40	3.99734028621927	100.912779185624	JKR Hilir Perak
154	T154	40	3.99763605751686	100.912864160626	JKR Hilir Perak
155	T155	40	3.99790699142547	100.91294552047	JKR Hilir Perak
156	T156	40	3.9981696404719	100.913007881458	JKR Hilir Perak
157	T157	40	3.9984895201814	100.913073003887	JKR Hilir Perak
158	T158	40	3.99870393837283	100.913122860732	JKR Hilir Perak
159	T159	40	3.99888011937128	100.913180552075	JKR Hilir Perak
160	T160	40	3.99883490875981	100.913323568455	Majlis Perbandaran Teluk Intan
161	T161	40	3.99873807956225	100.913569744997	Majlis Perbandaran Teluk Intan
162	T162	40	3.99867631377244	100.913904440826	Majlis Perbandaran Teluk Intan
163	T163	40	3.99862990388825	100.914242320854	Majlis Perbandaran Teluk Intan
164	T164	40	3.99871678887328	100.914514907206	Majlis Perbandaran Teluk Intan
165	T165	40	3.99866986260556	100.914869235724	Majlis Perbandaran Teluk Intan
166	T166	40	3.99869207304768	100.915195274688	Majlis Perbandaran Teluk Intan
167	T167	40	3.99873567154425	100.915445109844	Majlis Perbandaran Teluk Intan
168	T168	40	3.99888404376145	100.915856746369	Majlis Perbandaran Teluk Intan
169	T169	40	3.99899006991608	100.916295712348	Majlis Perbandaran Teluk Intan
170	T170	40	3.99903609610412	100.916692031156	Majlis Perbandaran Teluk Intan
171	T171	40	3.9990451938232	100.917051911507	Majlis Perbandaran Teluk Intan
172	T172	40	3.99903326626024	100.917446732908	Majlis Perbandaran Teluk Intan
173	T173	40	3.9990041053651	100.917751444297	Majlis Perbandaran Teluk Intan
174	T174	40	3.99896524682811	100.917983004334	Majlis Perbandaran Teluk Intan
175	T175	40	3.99894089255236	100.918191131843	Majlis Perbandaran Teluk Intan
176	T176	40	3.99886226818879	100.918475274786	Majlis Perbandaran Teluk Intan
177	T177	40	3.99876857502748	100.918803151206	Majlis Perbandaran Teluk Intan
178	T178	40	3.99864399247687	100.919159881573	Majlis Perbandaran Teluk Intan
179	T179	40	3.99855110419849	100.91950968481	Majlis Perbandaran Teluk Intan
180	T180	40	3.99854157456471	100.919781108793	Majlis Perbandaran Teluk Intan
181	T181	40	3.99859287368912	100.920032520614	Majlis Perbandaran Teluk Intan
182	T182	40	3.99864814592313	100.92030987855	Majlis Perbandaran Teluk Intan
183	T183	40	3.99873613401678	100.920718112645	Majlis Perbandaran Teluk Intan
184	T184	40	3.99880998750476	100.921011769723	Majlis Perbandaran Teluk Intan
185	T185	40	3.99889679800197	100.921288696418	Majlis Perbandaran Teluk Intan
186	T186	40	3.99913183483566	100.921585581408	Majlis Perbandaran Teluk Intan
187	T187	40	3.99928565200327	100.921901820923	Majlis Perbandaran Teluk Intan
188	T188	40	3.99935438528916	100.922240234868	Majlis Perbandaran Teluk Intan

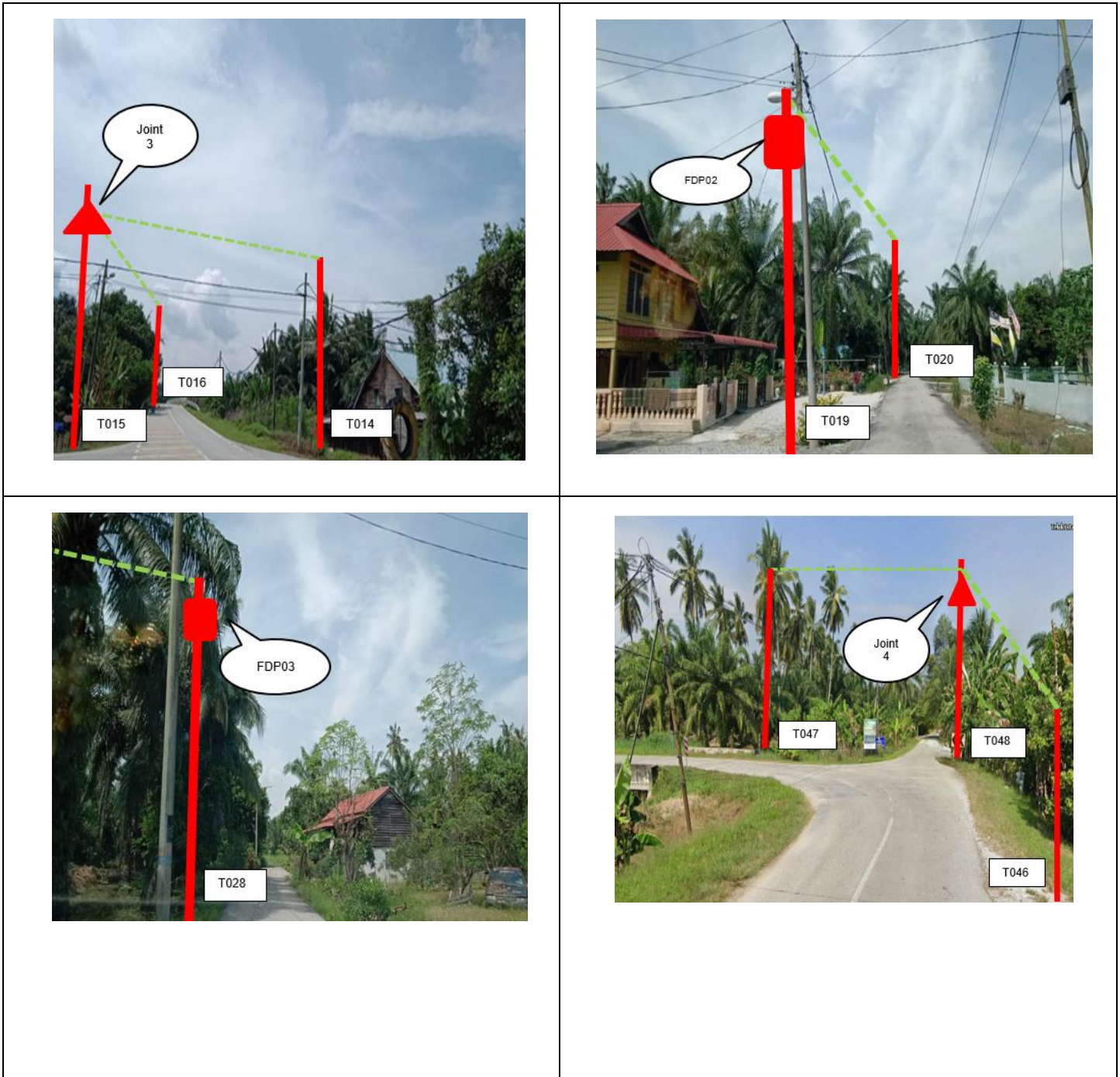
3.0 PROPOSED NEW POLE

Proposed New Pole Coordinate					
No.	Pole Number	Distance (m)	Latitude	Longitude	Local Authority
189	T189	40	3.99910401803942	100.922289149318	Majlis Perbandaran Teluk Intan
190	T190	40	3.99881870172211	100.922411634775	Majlis Perbandaran Teluk Intan
191	T191	40	3.9986027789528	100.922613889548	Majlis Perbandaran Teluk Intan
192	T192	40	3.99828444719409	100.922712576729	Majlis Perbandaran Teluk Intan
193	T193	40	3.99802472400423	100.922948142755	Majlis Perbandaran Teluk Intan
194	T194	40	3.9993936731637	100.922326349945	Majlis Perbandaran Teluk Intan
195	T195	40	3.99951107534987	100.922514307758	Majlis Perbandaran Teluk Intan
196	T196	40	3.99963854308078	100.922671783582	Majlis Perbandaran Teluk Intan
197	T197	40	3.99975808712054	100.922833559753	Majlis Perbandaran Teluk Intan
198	T198	40	3.99993517312979	100.923067067223	Majlis Perbandaran Teluk Intan
199	T199	40	4.00013480749139	100.923322172147	Majlis Perbandaran Teluk Intan
200	T200	40	4.00041290975082	100.923661242241	Majlis Perbandaran Teluk Intan
201	T201	40	4.00064869225163	100.924011322969	Majlis Perbandaran Teluk Intan
202	T202	40	4.00082348777067	100.924357972703	Majlis Perbandaran Teluk Intan
203	T203	40	4.00100548757384	100.924663743189	Majlis Perbandaran Teluk Intan
204	T204	40	4.0011751776088	100.925007794295	Majlis Perbandaran Teluk Intan
205	T205	40	4.00137027562145	100.925381049755	Majlis Perbandaran Teluk Intan
206	T206	40	4.00160208686677	100.925877174247	Majlis Perbandaran Teluk Intan
207	T207	40	4.00192256084776	100.926466579924	Majlis Perbandaran Teluk Intan
208	T208	40	4.00231657988804	100.926739604037	Majlis Perbandaran Teluk Intan
209	T209	40	4.00279996097352	100.926950152752	Majlis Perbandaran Teluk Intan
210	T210	40	4.00303956191186	100.927097057432	Majlis Perbandaran Teluk Intan
211	T211	40	4.0032584262031	100.927245805144	Majlis Perbandaran Teluk Intan
212	T212	40	4.00349595752783	100.927394076016	Majlis Perbandaran Teluk Intan
213	T213	40	4.00372894256489	100.927529534239	Majlis Perbandaran Teluk Intan
214	T214	40	4.00394621818166	100.927637958438	Majlis Perbandaran Teluk Intan
215	T215	40	4.00429230162361	100.927801293207	Majlis Perbandaran Teluk Intan
216	T216	40	4.00460899090526	100.927992009907	Majlis Perbandaran Teluk Intan
217	T217	40	4.00490282935865	100.92819886385	Majlis Perbandaran Teluk Intan
218	T218	40	4.00518363267698	100.928411009197	Majlis Perbandaran Teluk Intan
219	T219	40	4.00546412394279	100.928665453843	Majlis Perbandaran Teluk Intan

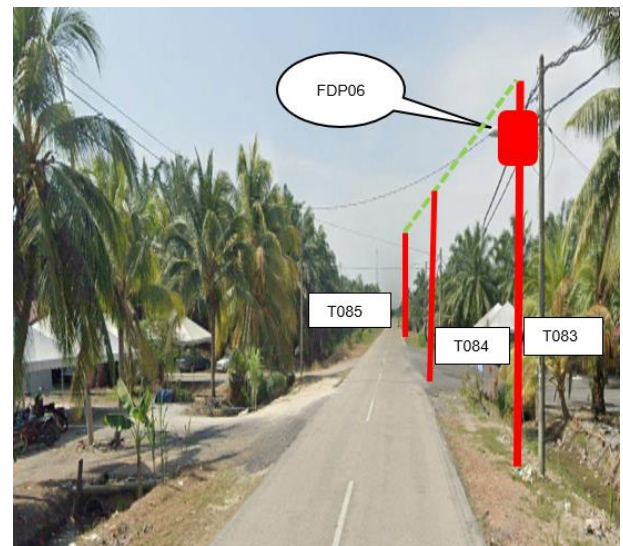
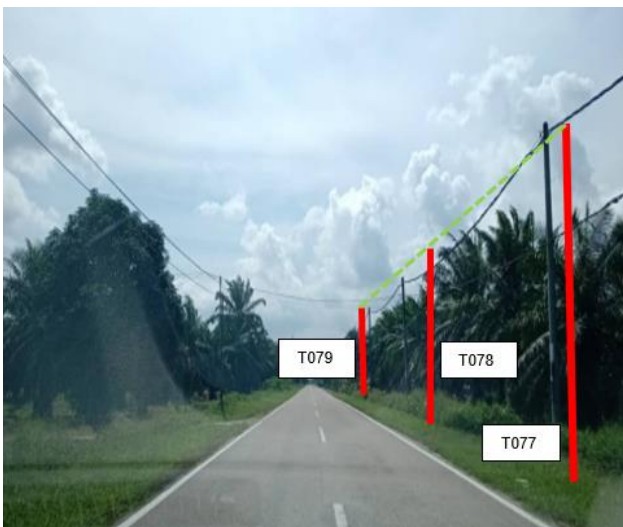
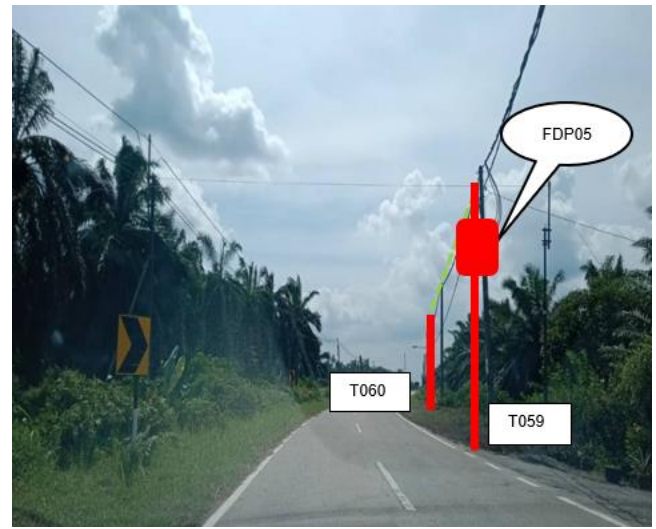
4.0 SITE PHOTOS - PROPOSED NEW POLE



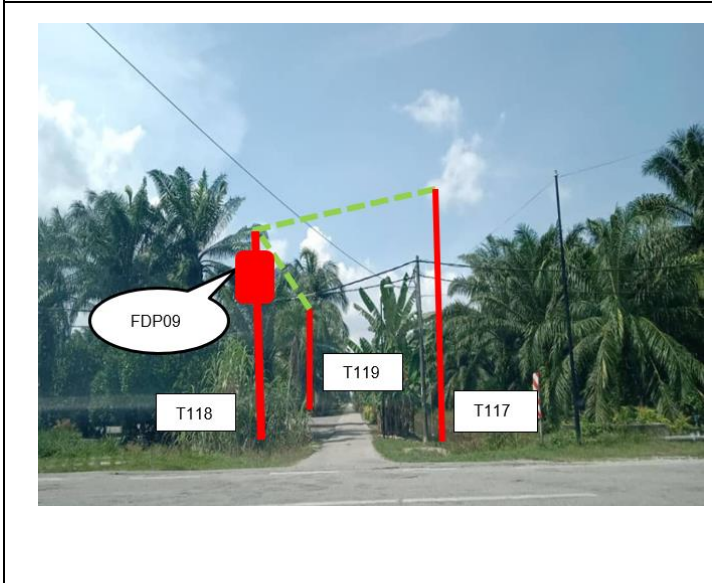
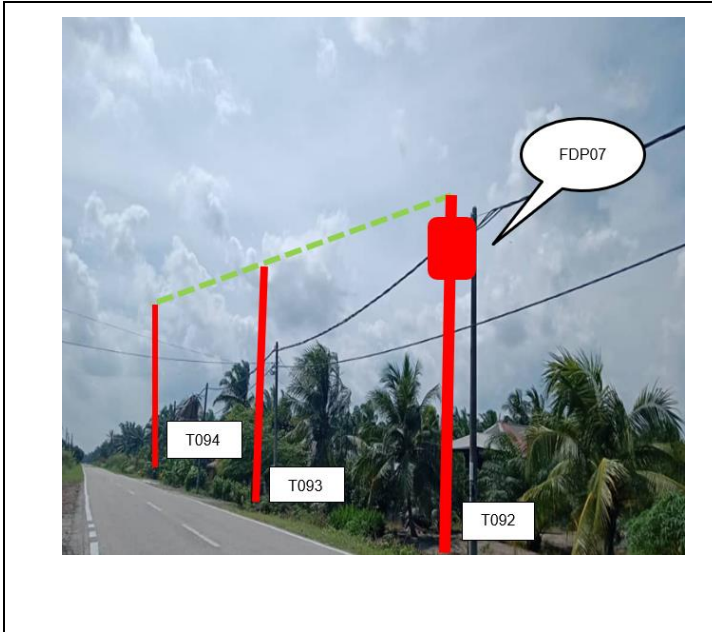
4.0 SITE PHOTOS - PROPOSED NEW POLE



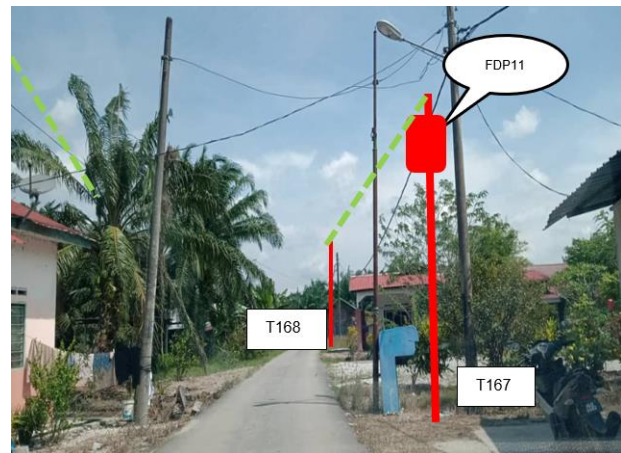
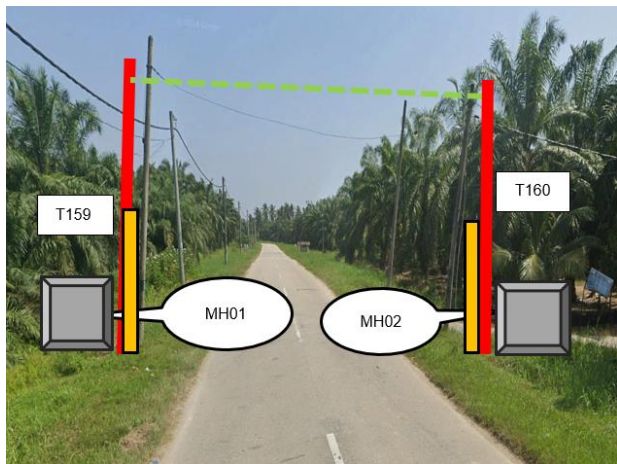
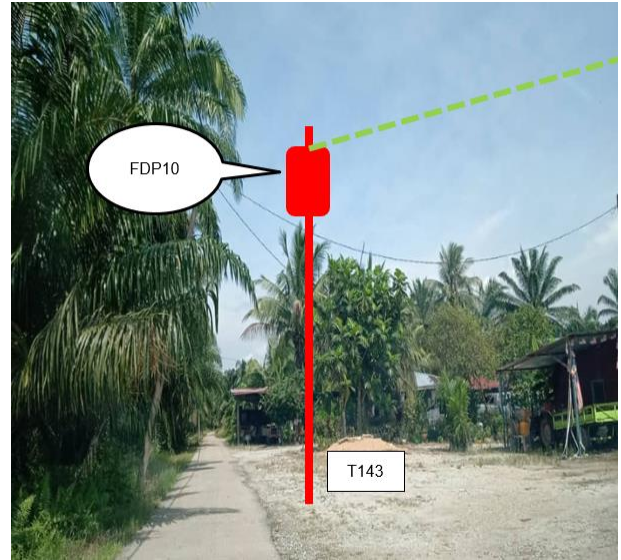
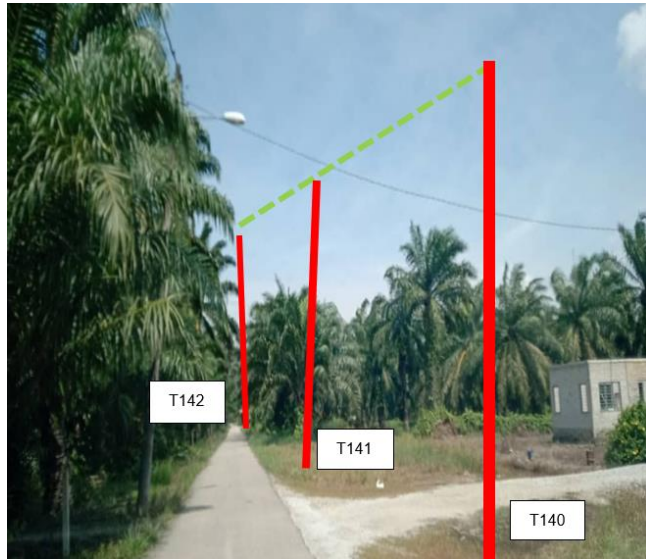
4.0 SITE PHOTOS - PROPOSED NEW POLE



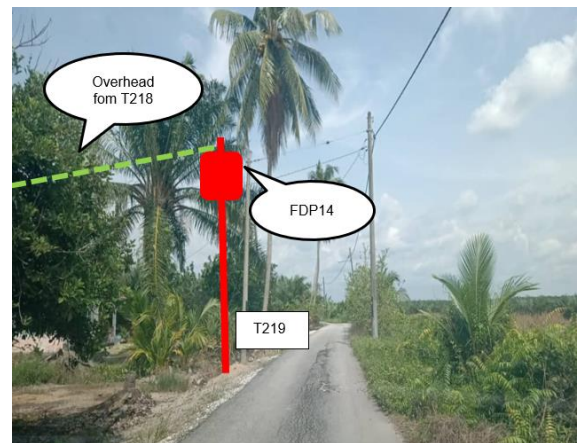
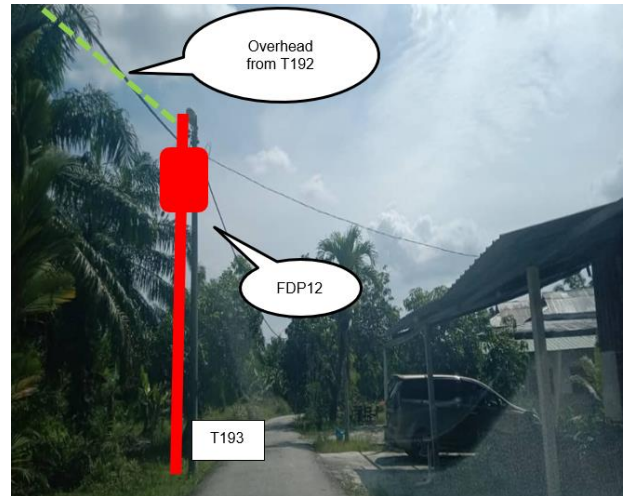
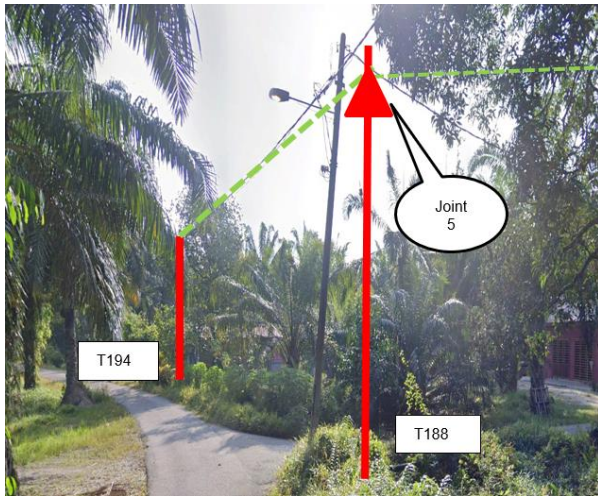
4.0 SITE PHOTOS - PROPOSED NEW POLE





4.0 SITE PHOTOS - PROPOSED NEW POLE



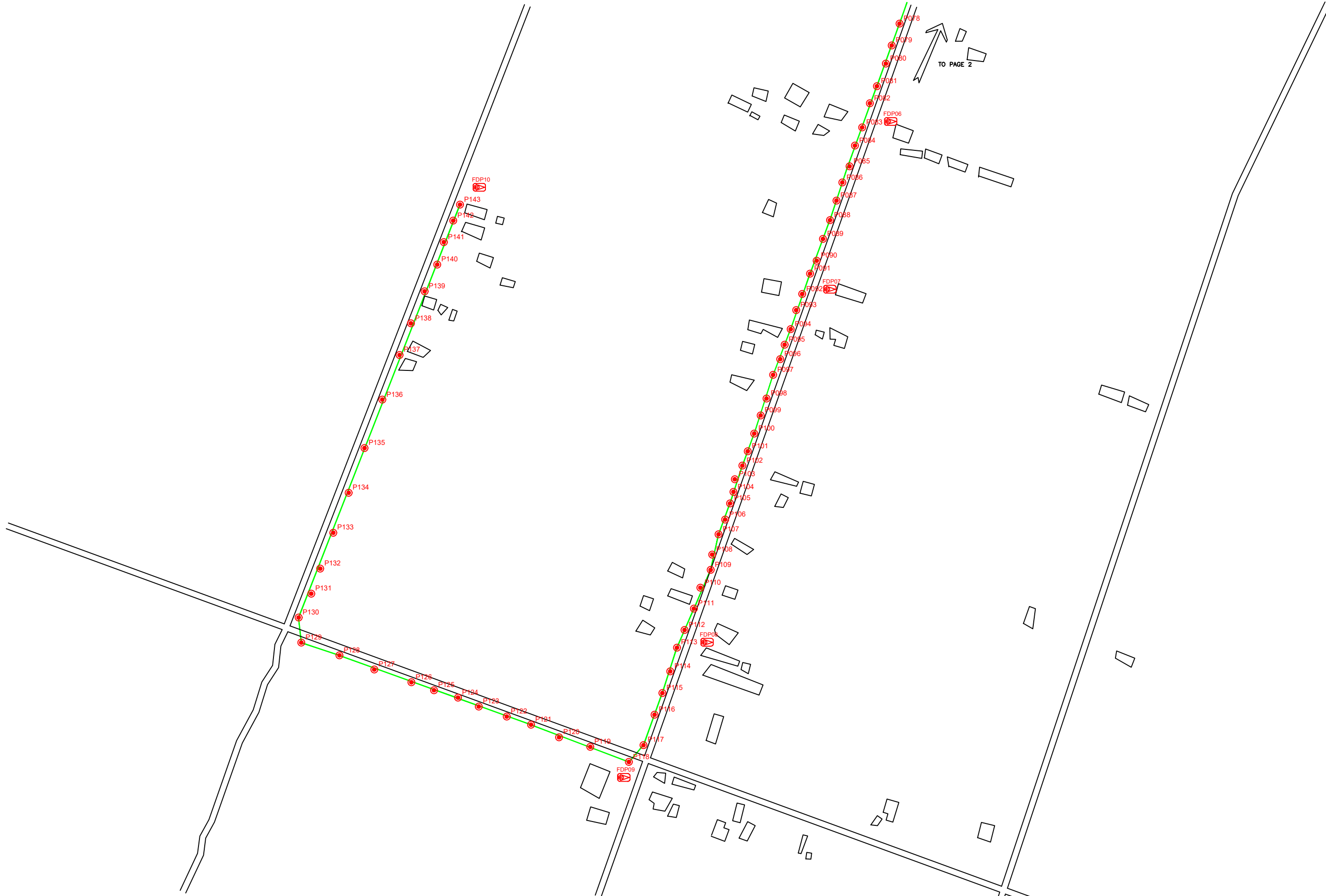
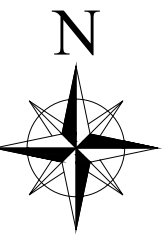
4.0 SITE PHOTOS - PROPOSED NEW POLE



	<p>PROJEK PENYEDIAAN DAN PENYELENGGARAAN POINT OF PRESENCE (POP) FASA 2: HAB INFRASTRUKTUR GENTIAN OPTIK BERHAMPIRAN DENGAN SEKOLAH, KAWASAN PERINDUSTRIAN, PREMIS KERAJAAN DAN KOMUNITI SEKITARNYA OLEH KEMENTERIAN KOMUNIKASI MALAYSIA – ZON UTARA (KKMM.400-11/17/132(1))</p>	
--	--	--

5.0 3rd PARTIES DEPENDENCIES

NO	LOCAL COUNCIL / AUTHORITY	REMARK
1	Majlis Perbandaran Teluk Intan	4,280m
2	JKR Hilir Perak	4,720m



TO PAGE 2

LEGEND

	12C FOC		Installed 1:4 splitter in FDC		INSTALLED POLE (9M)		NEW MANHOLE		TENSION SMALL / TENSION BIG		MH NO.
	24C FOC		FDP		INSTALLED RISER		HOUSE NUMBER		EXISTING MANHOLE		EXISTING TNB POLE NO.
	48C FOC		CLOSURE		SUSPENSION BIG		EXISTING ALLO POLE		CLOSURE NO.		NEW POLE NO.
	90C FOC		NEW MANHOLE (PT)		SUSPENSION SMALL		LOOP BOUNDARY		FDP NO.		SEE A.A. IN THIS SHEET
	144C FOC		INSTALLED POLE		FDC		FDC NO.		FDC NO.		SEE SHEET XXX

KEY PLAN

KEPENTERIAN KOMUNIKASI DAN DIGITAL

PROJECT OWNER

APEX COMMUNICATIONS SDN BHD

PRIVASAT

MAIN CONTRACTOR

KNZ Engineering

SUB-CONTRACTOR

KNZ ENGINEERING SDN BHD
 NO. 60 & 60A, Jalan Klebang Indah 1,
 Medan Klebang Indah,
 30100 Ipoh, Perak
 No Tel: 019-3695071
 Email: admin@knzengineering.com.my
 Website: www.knzengineering.com.my

PROJECT TITLE

SEKOLAH KEBANGSAAN SUNGAI RUSA

DRAWING TITLE

TP DRAWING POP 2 AT SEKOLAH KEBANGSAAN SUNGAI RUSA

PROJECT PHASE

PROJECT PHASE 2

DESIGN BY	NABIL	DATE	19/12/2024
DRAWN BY	NABIL	SCALE	NOT TO SCALE
CHECKED BY	AZHAN HARIS	JOB NUMBER	ABA5014
DRAWING NUMBER		ABA5014	
THIS PRINT AND ITS COPYRIGHT ARE THE PROPERTY OF KNZ ENGINEERING SDN. BHD.		A3	



TO PAGE 3



FROM PAGE 1

LEGEND

	12C FOC		Installed 1:4 splitter in FDC		INSTALLED POLE (9M)		NEW MANHOLE		TS / TB TENSION SMALL / TENSION BIG		MH NO.
	24C FOC		FDP		INSTALLED RISER		EXISTING MANHOLE		EXISTING MANHOLE		EXISTING TNB POLE NO.
	48C FOC		CLOSURE		SUSPENSION BIG		EXISTING ALLO POLE		CLOSURE NO.		NEW POLE NO.
	90C FOC		NEW MANHOLE (PT)		SUSPENSION SMALL		LOOP		FDP NO.		
	144C FOC		INSTALLED POLE		FDC		LOOP BOUNDARY		FDC NO.		

KEY PLAN

PROJECT OWNER



MAIN CONTRACTOR




SUB-CONTRACTOR



KNZ ENGINEERING SDN BHD
 NO. 60 & 60A, Jalan Klebang Indah 1, Medan Klebang Indah, 30100 Ipoh, Perak
 No Tel: 019-3695071
 Email: admin@knzengineering.com.my
 Website: www.knzengineering.com.my

PROJECT TITLE

SEKOLAH KEBANGSAAN SUNGAI RUSA

DRAWING TITLE

TP DRAWING POP 2 AT SEKOLAH KEBANGSAAN SUNGAI RUSA

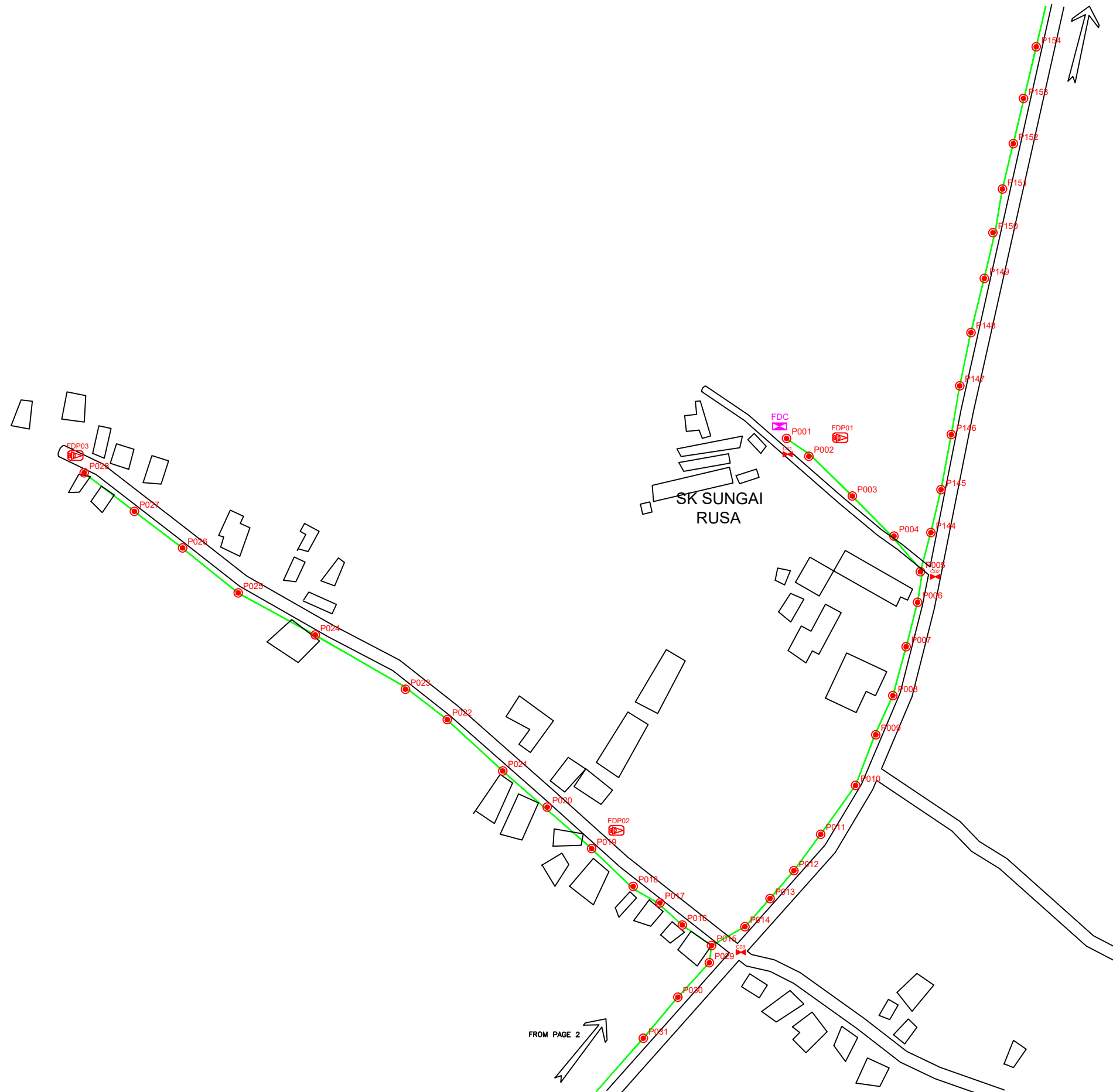
PROJECT PHASE

PROJECT PHASE 2

DESIGN BY	NABIL	DATE	19/12/2024
DRAWN BY	NABIL	SCALE	NOT TO SCALE
CHECKED BY	AZHAN HARIS	JOB NUMBER	ABA5014
DRAWING NUMBER		ABA5014	
THIS PRINT AND ITS COPYRIGHT ARE THE PROPERTY OF KNZ ENGINEERING SDN. BHD.		2/5	
		A3	



TO PAGE 4



FROM PAGE 2

LEGEND

12C FOC	Installed 1:4 splitter in FDC	INSTALLED POLE (9M)	NEW MANHOLE	TENSION SMALL / TENSION BIG	MH1 MH NO.
24C FOC	FDP	INSTALLED RISER	HOUSE NUMBER	EXISTING MANHOLE	TKS-1 EXISTING TNB POLE NO.
48C FOC	CLOSURE	SUSPENSION BIG	EXISTING ALLO POLE	CLOSURE NO.	P001 NEW POLE NO.
90C FOC	NEW MANHOLE (PT)	SUSPENSION SMALL	LOOP	FDP NO.	
144C FOC	INSTALLED POLE	FDC	FDP BOUNDARY	FDC NO.	

KEY PLAN

PROJECT OWNER

MAIN CONTRACTOR

SUB-CONTRACTOR

KNZ ENGINEERING SDN BHD
 NO. 60 & 60A, Jalan Klebang Indah 1, Medan Klebang Indah, 30100 Ipoh, Perak
 No Tel: 019-3695071
 Email: admin@knzengineering.com.my
 Website: www.knzengineering.com.my

PROJECT TITLE

SEKOLAH KEBANGSAAN SUNGAI RUSA

DRAWING TITLE

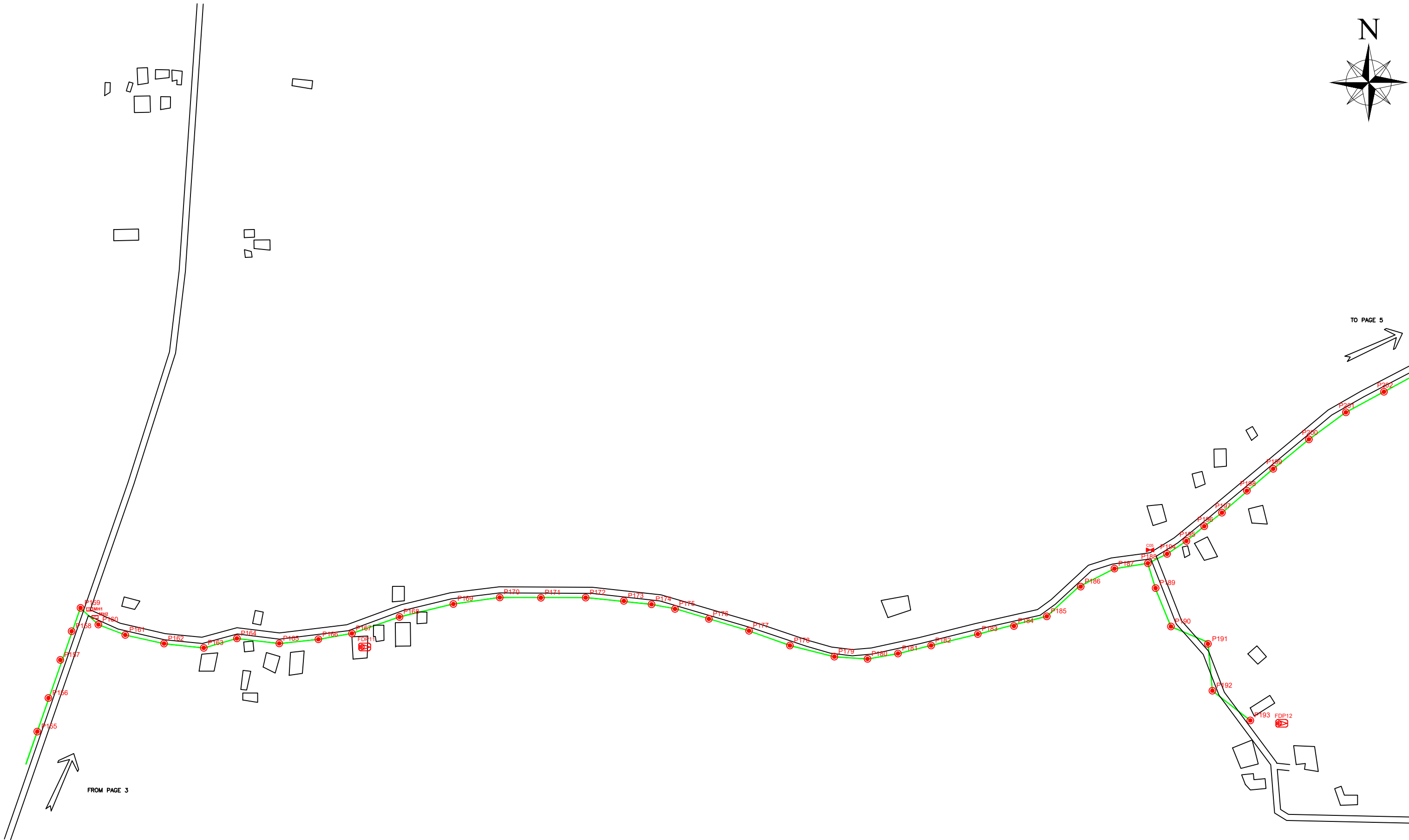
TP DRAWING POP 2 AT SEKOLAH KEBANGSAAN SUNGAI RUSA

PROJECT PHASE

PROJECT PHASE 2

DESIGN BY	NABIL	DATE	19/12/2024
DRAWN BY	NABIL	SCALE	NOT TO SCALE
CHECKED BY	AZHAN HARIS	JOB NUMBER	ABA5014
DRAWING NUMBER		ABA5014	
THIS PRINT AND ITS COPYRIGHT ARE THE PROPERTY OF KNZ ENGINEERING SDN. BHD.		3/5	

A3

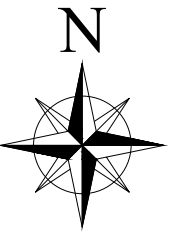


LEGEND

	12C FOC		Installed 1:4 splitter in FDC		INSTALLED POLE (9M)		NEW MANHOLE		TENSION SMALL / TENSION BIG		MH NO.
	24C FOC		FDP		INSTALLED RISER		EXISTING MANHOLE		EXISTING TNB POLE NO.		NEW POLE NO.
	48C FOC		CLOSURE		SUSPENSION BIG		CLOSURE NO.		FDP NO.		FDC NO.
	90C FOC		NEW MANHOLE (PT)		SUSPENSION SMALL		FDP NO.		FDC NO.		FDC NO.
	144C FOC		INSTALLED POLE		FDC		FDP NO.		FDC NO.		FDC NO.

<p>KEY PLAN</p>	<p>PROJECT OWNER</p>	<p>MAIN CONTRACTOR</p>	<p>SUB-CONTRACTOR</p> <p>KNZ ENGINEERING SDN BHD NO. 60 & 60A, Jalan Klebang Indah 1, Medan Klebang Indah, 30100 Ipoh, Perak No Tel: 019-3695071 Email: admin@knzengineering.com.my Website: www.knzengineering.com.my</p>
-----------------	----------------------	------------------------	--

<p>PROJECT TITLE</p> <p>SEKOLAH KEBANGSAAN SUNGAI RUSA</p>	<p>DRAWING TITLE</p> <p>TP DRAWING POP 2 AT SEKOLAH KEBANGSAAN SUNGAI RUSA</p>	<p>DESIGN BY</p> <p>NABIL</p>	<p>DATE</p> <p>19/12/2024</p>
<p>PROJECT PHASE</p> <p>PROJECT PHASE 2</p>	<p>DRAWING NUMBER</p> <p>ABA5014</p>	<p>DRAWN BY</p> <p>NABIL</p>	<p>SCALE</p> <p>NOT TO SCALE</p>
<p>THIS PRINT AND ITS COPYRIGHT ARE THE PROPERTY OF KNZ ENGINEERING SDN. BHD.</p>		<p>CHECKED BY</p> <p>AZHAN HARIS</p>	<p>JOB NUMBER</p> <p>ABA5014</p>
		<p>4/5</p>	<p>A3</p>



LEGEND

	12C FOC		Installed 1:4 splitter in FDC		INSTALLED POLE (9M)		NEW MANHOLE		TS / TB TENSION SMALL / TENSION BIG		MH NO.
	24C FOC		FDP		INSTALLED RISER		HOUSE NUMBER		EXISTING SMALL / TENSION BIG		EXISTING TNB POLE NO.
	48C FOC		CLOSURE		SUSPENSION BIG		EXISTING ALLO POLE		CLOSURE NO.		NEW POLE NO.
	90C FOC		NEW MANHOLE (PT)		SUSPENSION SMALL		LOOP		FDP NO.		
	144C FOC		INSTALLED POLE		FDC		FDP BOUNDARY		FDC NO.		

KEY PLAN

PROJECT OWNER



KEPENTERIAN KOMUNIKASI DAN DIGITAL

MAIN CONTRACTOR




SUB-CONTRACTOR



KNZ ENGINEERING SDN BHD
 NO. 60 & 60A, Jalan Klebang Indah 1,
 Medan Klebang Indah,
 30100 Ipoh, Perak
 No Tel: 019-3695071
 Email: admin@knzengineering.com.my
 Website: www.knzengineering.com.my

PROJECT TITLE

SEKOLAH KEBANGSAAN SUNGAI RUSA

DRAWING TITLE

TP DRAWING POP 2 AT SEKOLAH KEBANGSAAN SUNGAI RUSA

PROJECT PHASE

PROJECT PHASE 2

DESIGN BY	NABIL	DATE	19/12/2024
DRAWN BY	NABIL	SCALE	NOT TO SCALE
CHECKED BY	AZHAN HARIS	JOB NUMBER	ABA5014
DRAWING NUMBER		ABA5014	
THIS PRINT AND ITS COPYRIGHT ARE THE PROPERTY OF KNZ ENGINEERING SDN. BHD.		5/5	
		A3	