

TECHNICAL PROPOSAL

POP2 ABA5014 SEKOLAH KEBANGSAAN SUNGAI RUSA (D-SIDE)

Company Name : KNZ ENGINEERING SDN BHD.
Company Address : NO 60 & 60 A JALAN KLEBANG INDAH 1 MEDAN KLEBANG INDAH 30010 IPOH PERAK
Prepared By : AZHAN HARIS
Date : 21/9/2025



Starting Point

Site / Boundary Name : Teluk Intan
Address : SK Sungai Rusa, No. 1, Kampung Sungai Ranggam, Perak, 36000 Teluk Intan, Perak
District : Teluk Intan
Postcode : 36000
State : Perak
GPS Coordinate : 3.99525541714815, 100.91140322951
LRD : A

End Point

Site / Boundary Name : Teluk Intan
Address : Kampung Tanjung Sari, 36010 Teluk Intan, Perak
District : Teluk Intan
Postcode : 36020
State : Perak
GPS Coordinate : 3.984456, 100.900514
LRD : B



PROJEK PENYEDIAAN DAN PENYELENGGARAAN POINT OF PRESENCE (POP) FASA 2: HAB INFRASTRUKTUR GENTIAN OPTIK BERHAMPIRAN DENGAN SEKOLAH, KAWASAN PERINDUSTRIAN, PREMIS KERAJAAN DAN KOMUNITI SEKITARNYA OLEH KEMENTERIAN KOMUNIKASI MALAYSIA – ZON UTARA (KKMM.400-11/17/132(1))



1.0 WORK SUMMARY

NO	PROPOSED DISTANCE AND METHOD	UNIT	QUANTITY
1	Horizontal Directional Drilling (HDD)	m	2900m
2	Carriage Way Open Trench (CW)	m	0
3	Grass Verge Open Trenching (GV)	m	0
4	Micro Trenching (MT)	m	0
Total			0

NO	OTHER INFORMATION	UNIT	QUANTITY
1	Installation of Short Span ADSS Fibre Cables	m	6000
2	Install New Pole	ea	73
3	Install New JRC7 Manhole	ea	14
4	Install GI Riser 100mm	ea	8
5	Install Fiber Distribution Point	ea	10
6	Install Closure	ea	5
7	Estimated Time Required for Completion	days	30

2.0 LOCAL AUTHORITY SUMMARY

Daerah Hilir Perak

Bil	Items	Owner	Quantity	Distance
1	HDD	JKR	13	2900m
		Majlis	-	-
		Estate / Private Land	-	-
2	New Pole	JKR	5	200m
		Majlis	68	2720m
		Estate / Private Land	-	-
3	Existing TNB Pole	JKR	-	-
		Majlis	-	-
		Estate / Private Land	-	-
Total				5820m

Site Plan -KMZ (Overview site area)

Proposed FDP , Manhole and Closure



Proposed New Pole



Site Plan - KMZ Routing (All Local Authority)

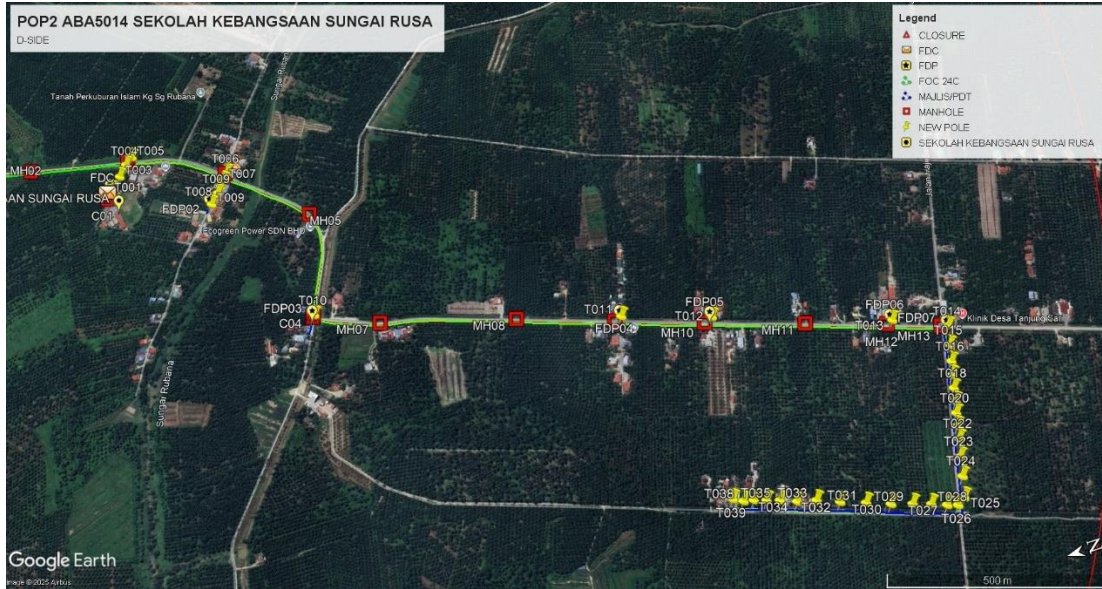


Red Colour – JKR Road

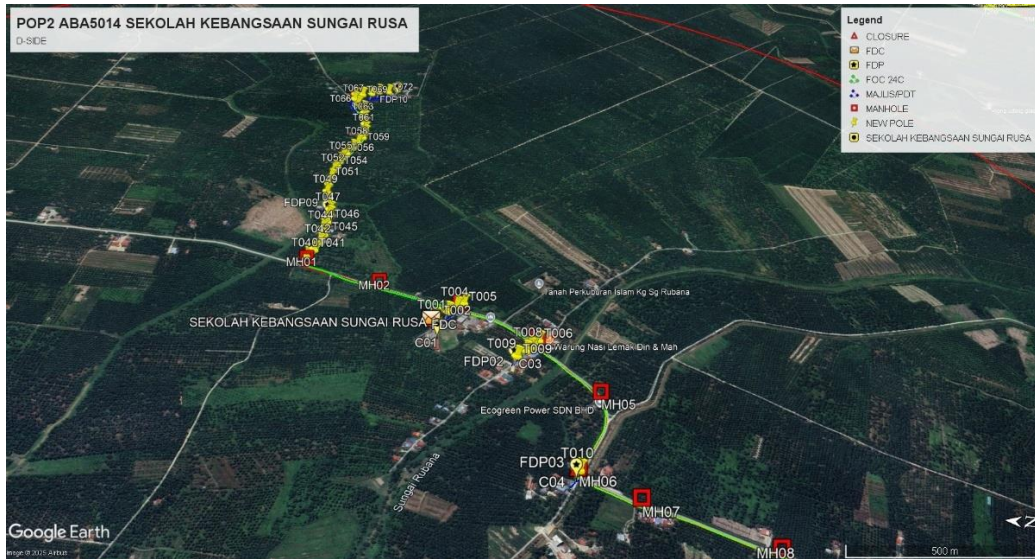
Blue Colour - Majlis Road

Site Plan – KMZ Routing (All site area)

Route 1

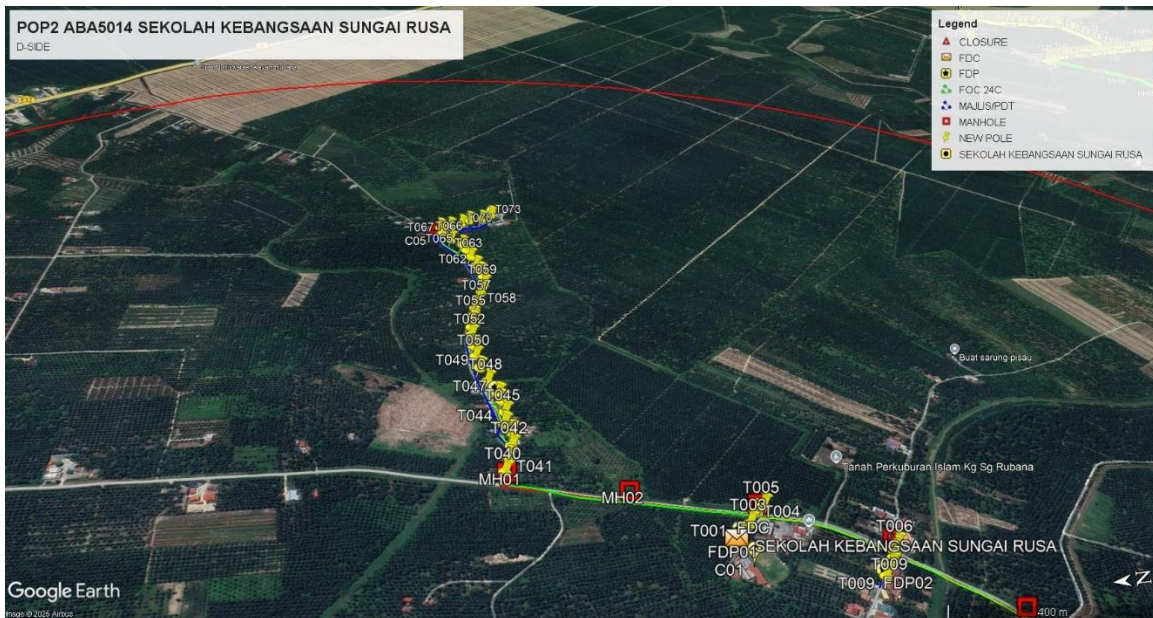
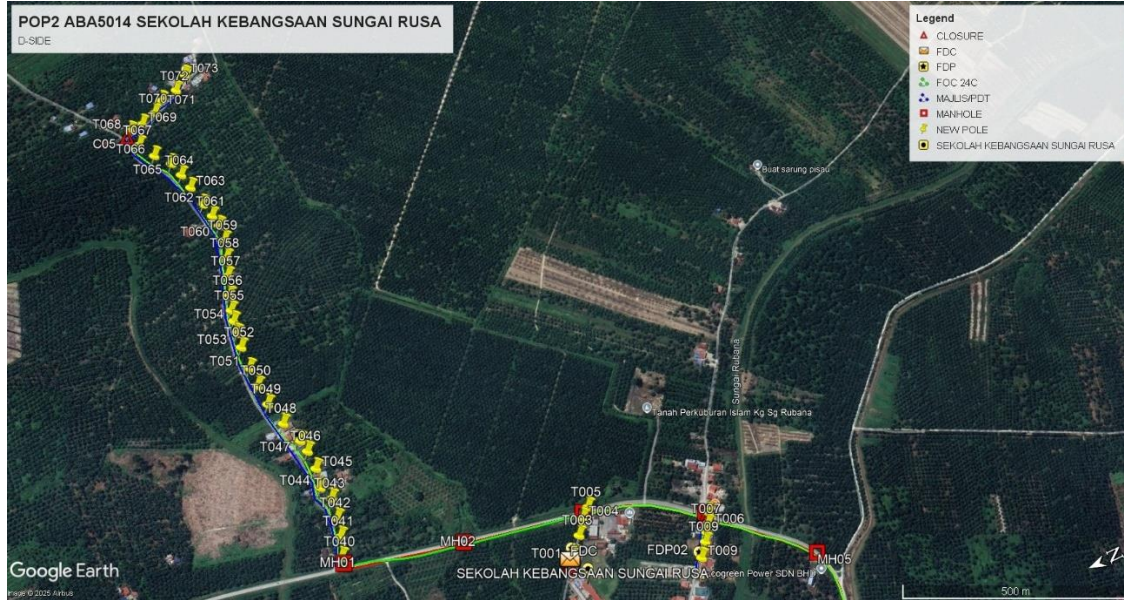


Route 1.1



Route 1.2

Route 2



Route 2.1

3.0 PROPOSED NEW POLE

Proposed New Pole Coordinate					
No.	Pole Number	Distance (m)	Latitude-Y	Longitude-X	Local Authority
1	T001	40	3.995255417	100.9114032	MPTI
2	T002	40	3.995173922	100.9114818	MPTI
3	T003	40	3.99493998	100.9117372	MPTI
4	T004	40	3.994744602	100.9119805	MPTI
5	T005	40	3.994575737	100.9121166	JKR HILIR PERAK
6	T006	40	3.992600249	100.9110434	MPTI
7	T007	40	3.992714704	100.9108763	MPTI
8	T008	40	3.992807458	100.9107498	MPTI
9	T009	40	3.992906383	100.9106146	MPTI
10	T010	40	3.993100847	100.9103952	MPTI
11	T011	40	3.991561348	100.9071528	JKR HILIR PERAK
12	T012	40	3.985219003	100.9049773	JKR HILIR PERAK
13	T013	40	3.983339121	100.9043372	JKR HILIR PERAK
14	T014	40	3.979636151	100.9030064	MPTI
15	T015	40	3.978527598	100.9024991	MPTI
16	T016	40	3.978680462	100.9021001	MPTI
17	T017	40	3.978803807	100.9017583	MPTI
18	T018	40	3.978914592	100.9014773	MPTI
19	T019	40	3.979007567	100.9012075	MPTI
20	T020	40	3.979088528	100.900934	MPTI
21	T021	40	3.97918386	100.9007014	MPTI
22	T022	40	3.979278906	100.9004421	MPTI
23	T023	40	3.979354733	100.9001849	MPTI
24	T024	40	3.979497206	100.8998336	MPTI
25	T025	40	3.979624579	100.8994496	MPTI
26	T026	40	3.979773559	100.8990433	MPTI
27	T027	40	3.979968551	100.8989422	MPTI
28	T028	40	3.980184224	100.899016	MPTI
29	T029	40	3.980491062	100.8991371	MPTI
30	T030	40	3.980850366	100.8992647	MPTI
31	T031	40	3.981278078	100.8994076	MPTI
32	T032	40	3.981753499	100.8995925	MPTI
33	T033	40	3.982262851	100.8997845	MPTI
34	T034	40	3.982704646	100.899967	MPTI
35	T035	40	3.983092499	100.9000719	MPTI
36	T036	40	3.983425007	100.9002096	MPTI
37	T037	40	3.983689537	100.9002946	MPTI
38	T038	40	3.98393591	100.9003874	MPTI
39	T039	40	3.984149617	100.9004372	MPTI
40	T040	40	3.99887	100.91325	MPTI



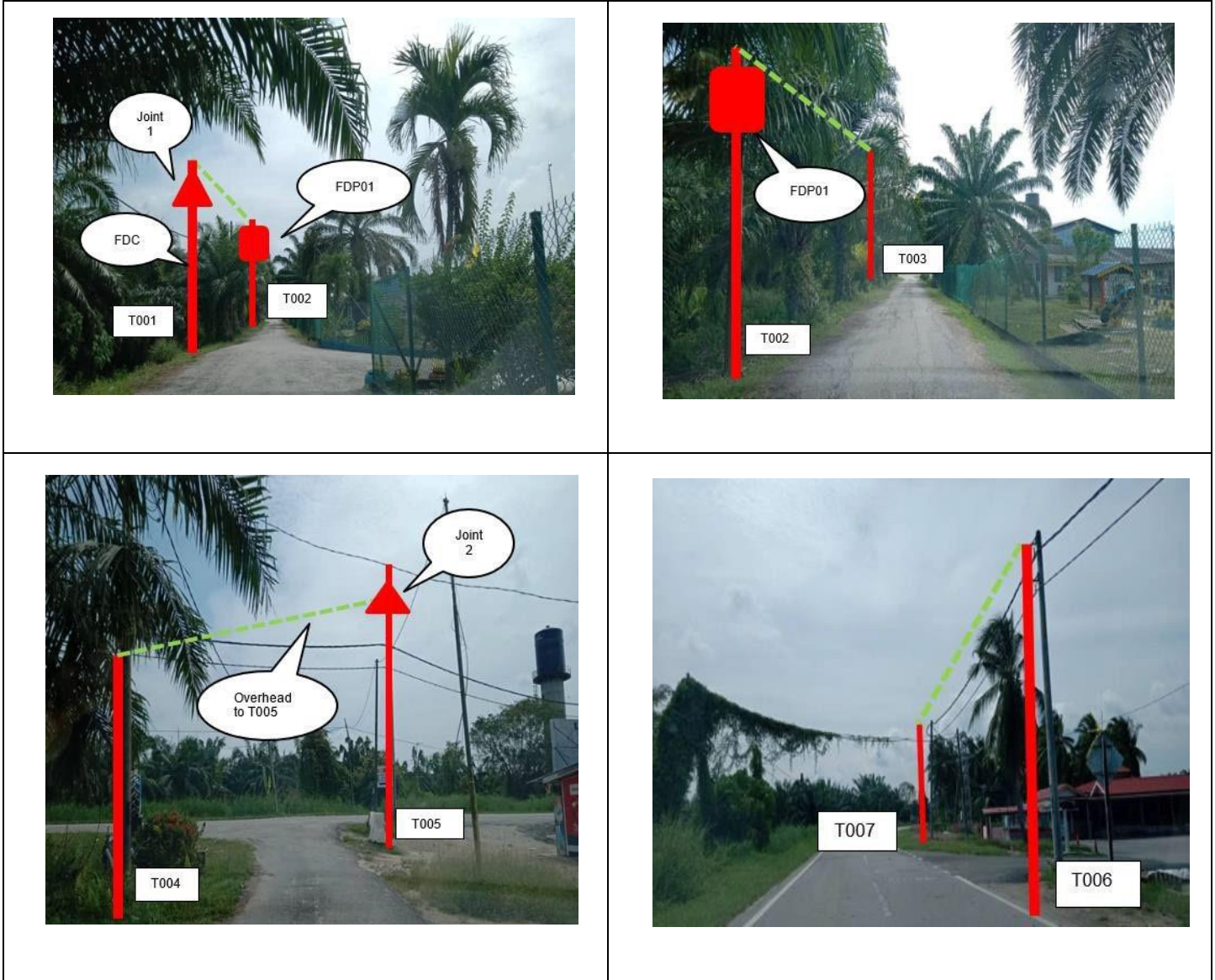
PROJEK PENYEDIAAN DAN PENYELENGGARAAN POINT OF PRESENCE (POP) FASA 2: HAB INFRASTRUKTUR GENTIAN OPTIK BERHAMPIRAN DENGAN SEKOLAH, KAWASAN PERINDUSTRIAN, PREMIS KERAJAAN DAN KOMUNITI SEKITARNYA OLEH KEMENTERIAN KOMUNIKASI MALAYSIA – ZON UTTARA (KKMM..4400-111/117/132(1))



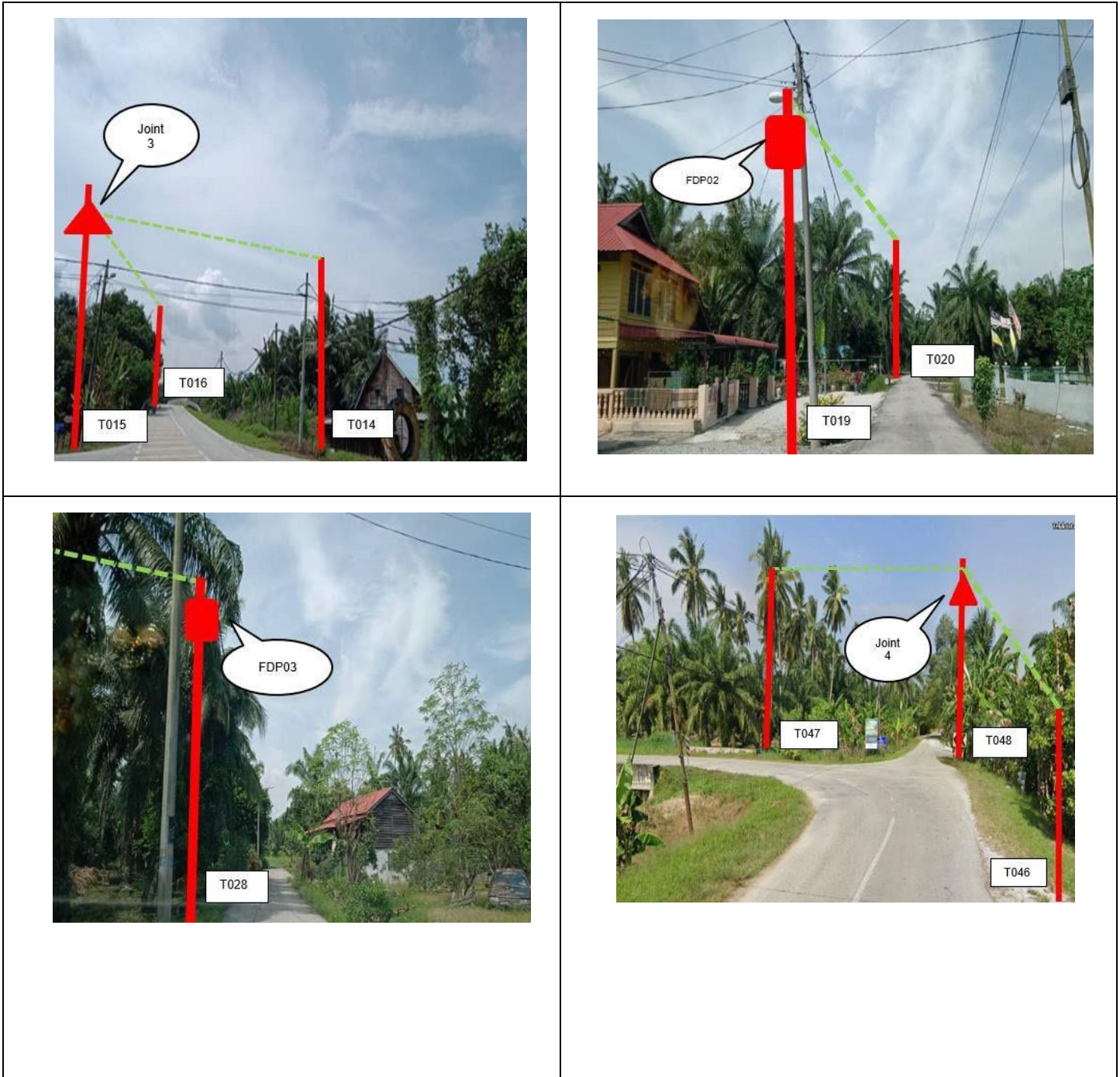
3.0 PROPOSED NEW POLE

Proposed New Pole Coordinate					
No.	Pole Number	Distance (m)	Latitude	Longitude	Local Authority
41	T041	40	3.984346639	100.9005451	MPTI
42	T042	40	3.998676314	100.9139044	MPTI
43	T043	40	3.998629904	100.9142423	MPTI
44	T044	40	3.998716789	100.9145149	MPTI
45	T045	40	3.998669863	100.9148692	MPTI
46	T046	40	3.998692073	100.9151953	MPTI
47	T047	40	3.998735672	100.9154451	MPTI
48	T048	40	3.998884044	100.9158567	MPTI
49	T049	40	3.99899007	100.9162957	MPTI
50	T050	40	3.999036096	100.916692	MPTI
51	T051	40	3.999045194	100.9170519	MPTI
52	T052	40	3.999033266	100.9174467	MPTI
53	T053	40	3.999004105	100.9177514	MPTI
54	T054	40	3.998965247	100.917983	MPTI
55	T055	40	3.998940893	100.9181911	MPTI
56	T056	40	3.998862268	100.9184753	MPTI
57	T057	40	3.998768575	100.9188032	MPTI
58	T058	40	3.998643992	100.9191599	MPTI
59	T059	40	3.998551104	100.9195097	MPTI
60	T060	40	3.998541575	100.9197811	MPTI
61	T061	40	3.998592874	100.9200325	MPTI
62	T062	40	3.998648146	100.9203099	MPTI
63	T063	40	3.998736134	100.9207181	MPTI
64	T064	40	3.998809988	100.9210118	MPTI
65	T065	40	3.998896798	100.9212887	MPTI
66	T066	40	3.999131835	100.9215856	MPTI
67	T067	40	3.999285652	100.9219018	MPTI
68	T068	40	3.999354385	100.9222402	MPTI
69	T069	40	3.999104018	100.9222891	MPTI
70	T070	40	3.998818702	100.9224116	MPTI
71	T071	40	3.998602779	100.9226139	MPTI
72	T072	40	3.998284447	100.9227126	MPTI
73	T073	40	3.998024724	100.9229481	MPTI

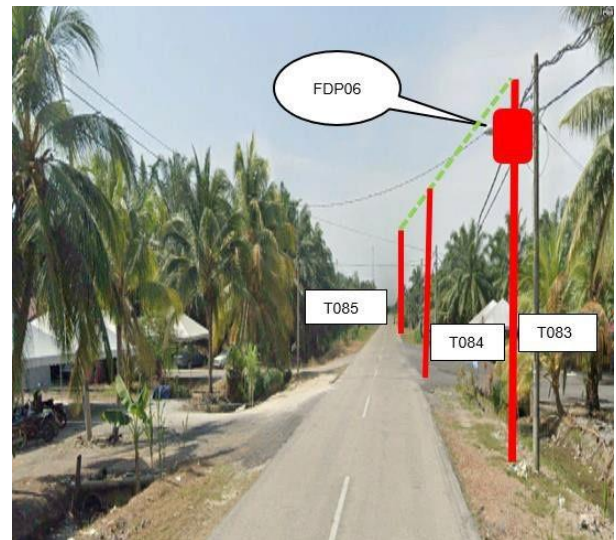
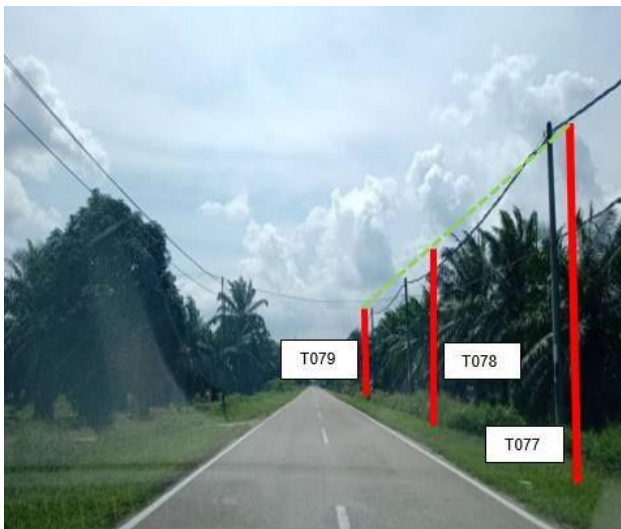
4.0 SITE PHOTOS - PROPOSED NEW POLE



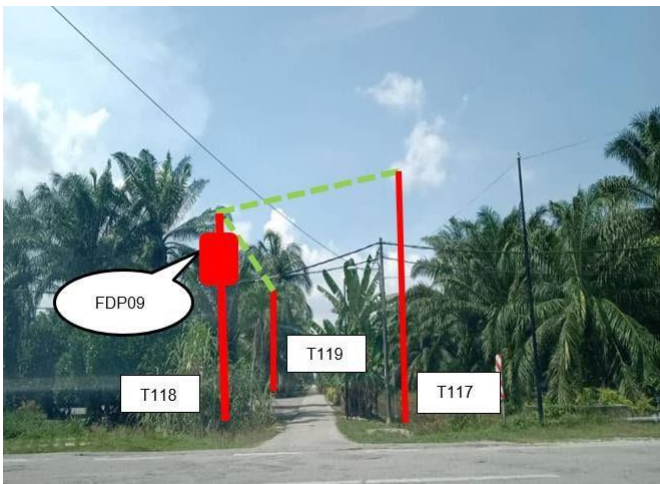
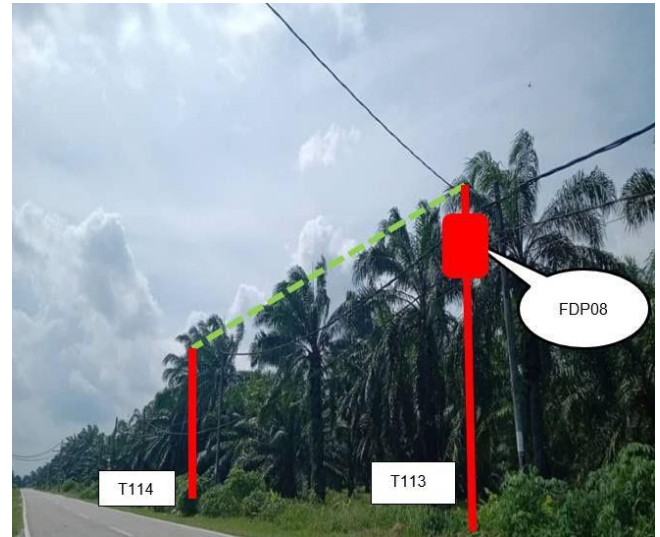
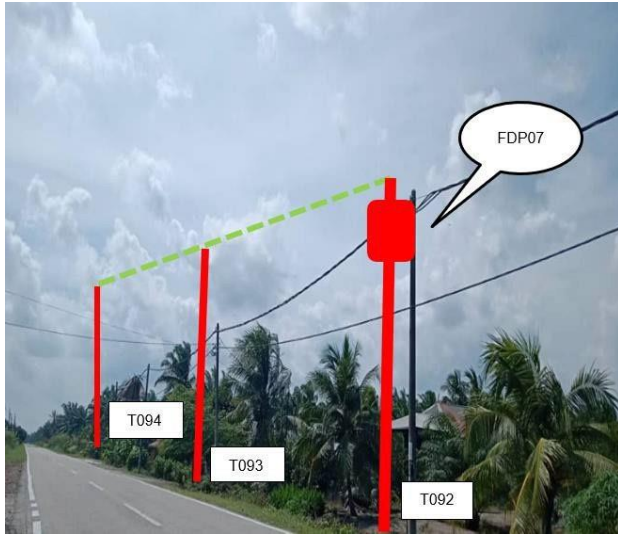
4.0 SITE PHOTOS - PROPOSED NEW POLE



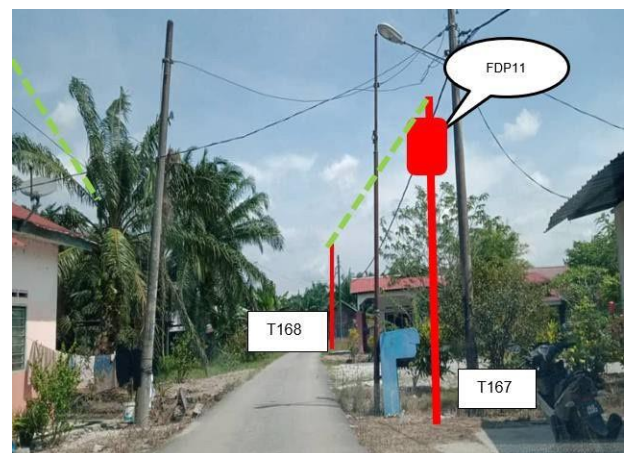
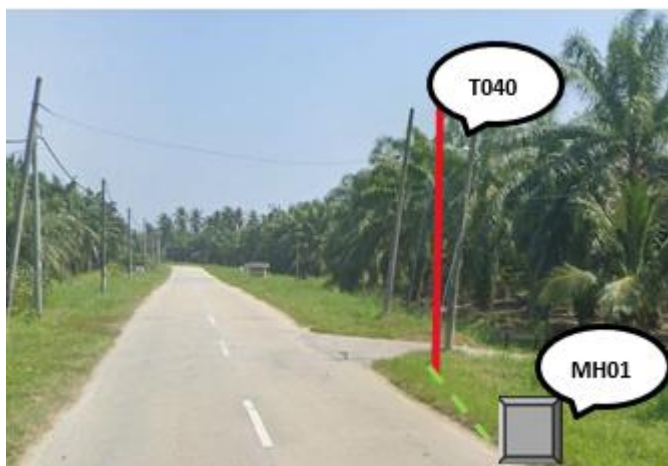
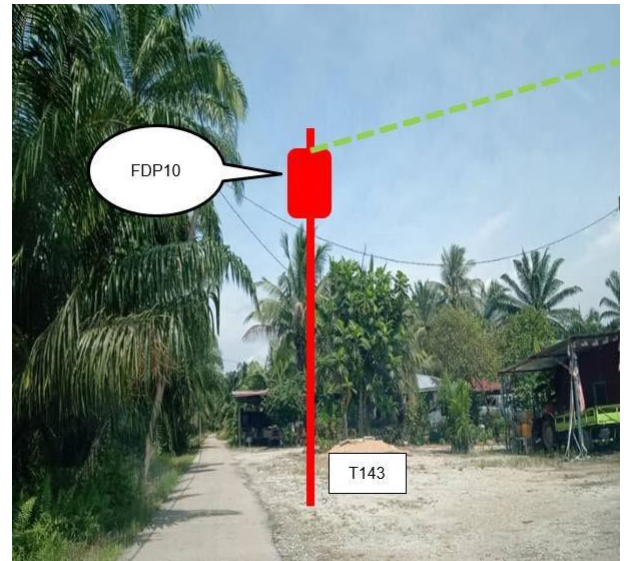
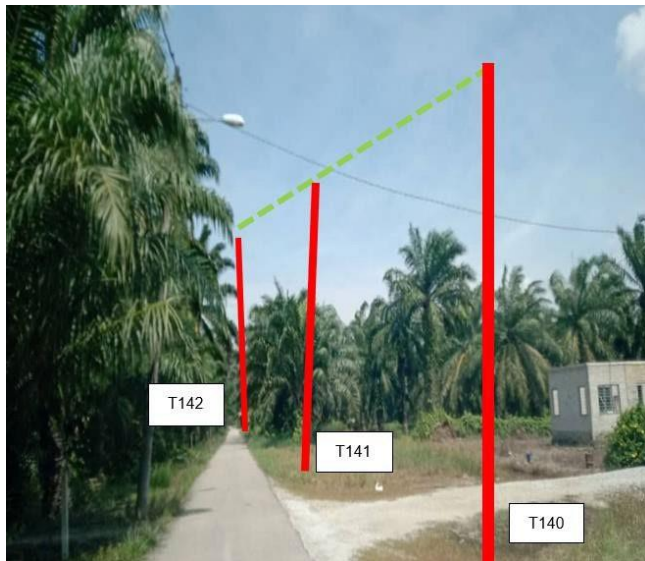
4.0 SITE PHOTOS - PROPOSED NEW POLE



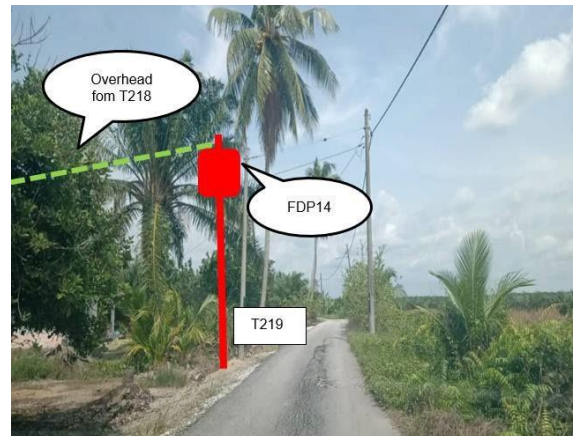
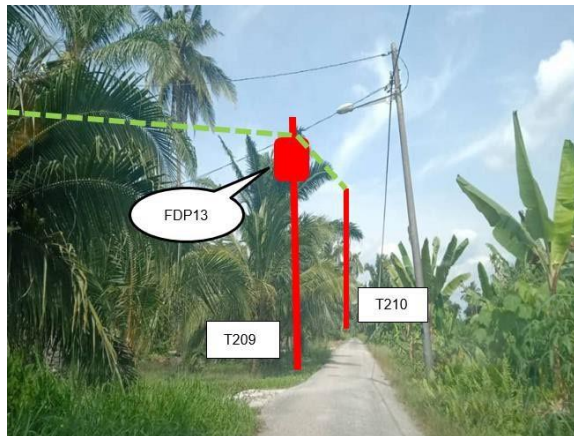
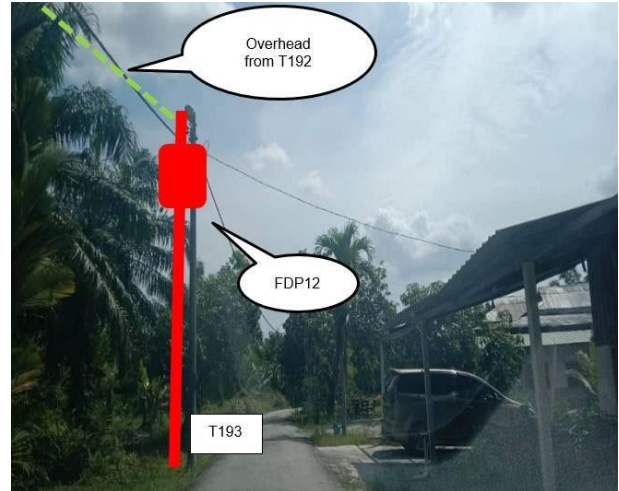
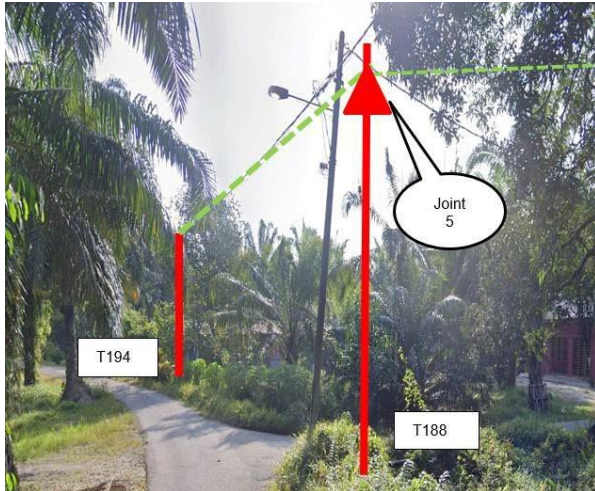
4.0 SITE PHOTOS - PROPOSED NEW POLE





4.0 SITE PHOTOS - PROPOSED NEW POLE



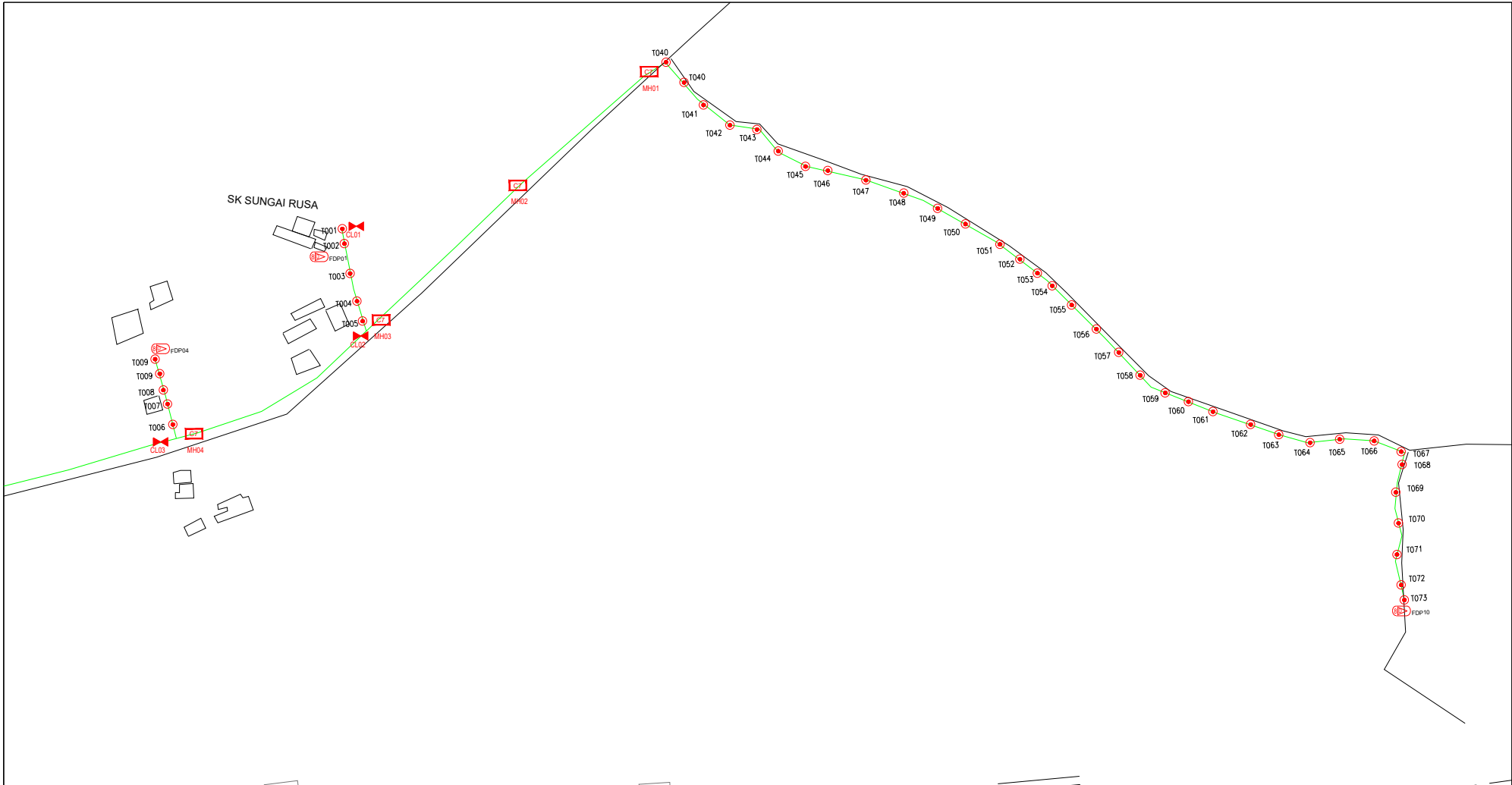
4.0 SITE PHOTOS - PROPOSED NEW POLE



	<p>PROJEK PENYEDIAAN DAN PENYELENGGARAAN POINT OF PRESENCE (POP) FASA 2: HAB INFRASTRUKTUR GENTIAN OPTIK BERHAMPIRAN DENGAN SEKOLAH, KAWASAN PERINDUSTRIAN, PREMIS KERAJAAN DAN KOMUNITI SEKITARNYA OLEH KEMENTERIAN KOMUNIKASI MALAYSIA – ZON UTARA (KKMM.400-11/17/132(1))</p>	
--	--	--

5.0 3rd PARTIES DEPENDENCIES

NO	LOCAL COUNCIL / AUTHORITY	REMARK
1	Majlis Perbandaran Teluk Intan	2,720m
2	JKR Hilir Perak	2,900m



	12C FOC		Installed 1:4 / 1:8 / 1:32		Installed Pole (9m)		Suspension		New Manhole (PIT)		Micro-Trenching (Meter)		MH NO.
	24C FOC		Installed Patch Cord		Installed Pole (7.5M)		Tension		New Manhole(URC7)		Temporary Infra (Meter)		TKS-1 Existing TNB Pole NO.
	48C FOC		FDC		Installed Pole (6.7M)		Pole Ring		FDP Boundary		Loop / Coil (Meter)		TOB1 New Pole NO.
	96C FOC		Closure		Existing TNB Pole		FDP with (1:8) splitter		HDD (Meter)		Active Outdoor Cabinet		CL01 Closure NO.
	144C FOC		Existing Closure		Installed Riser		Existing Manhole		Open Cut (Meter)		FDC NO.		DPI1 FDP NO.

TP DRAWING (D-SIDE)

KEY PLAN:

PROJECT OWNER:



KEMENTERIAN KOMUNIKASI DAN DIGITAL

MAIN CONTRACTOR:




SUB-CONTRACTOR:

PROJECT TITLE:

SK SUNGAI RUSA

DRAWING TITLE:

TP DRAWING POP 2 AT SEKOLAH KEBANGSAAN SUNGAI RUSA

PROJECT PHASE:

PHASE 2 - POP

Design By :	YUSFAZRIN	Date :	6/11/2025
Drawn By :	YUSFAZRIN	Scale :	
Checked By :		Job Number :	
DRAWING NUMBER :	ABAS014	Sheet :	2/2
THIS PRINT AND ITS COPYRIGHT ARE THE PROPERTY OF ALLO TECHNOLOGY SDN BHD		Size :	A3