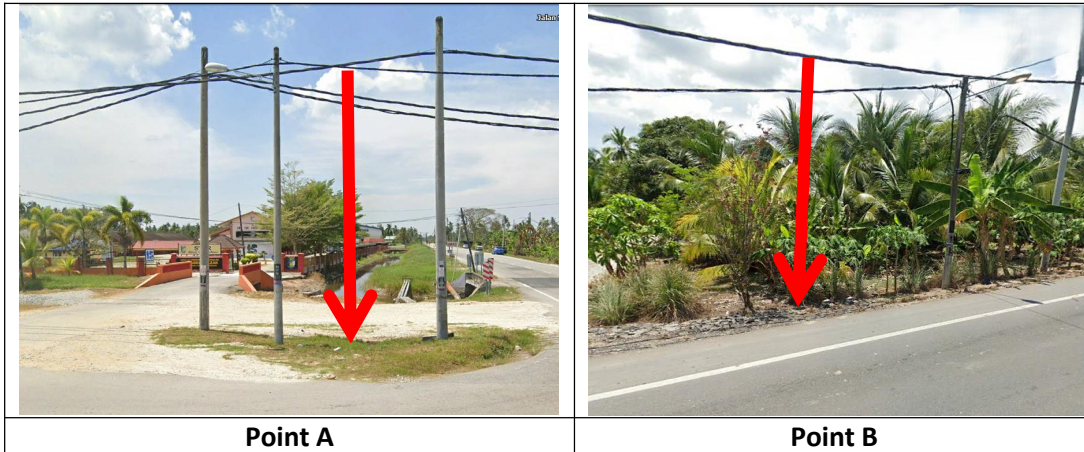


# TECHNICAL PROPOSAL

## POP2 AEEB002 SEKOLAH MENENGAH KEBANGSAAN TUN ABDUL RAZAK ( D-SIDE )

**Company Name** : T&H PANJI EMPIRE SDN BHD  
**Company Address** : 39A Jalan Jelapang 5, Pusat Komersial Jelapang, 30020 Ipoh, Perak Darul Ridzuan.  
**Prepared By** : Mat Salleh Bin Mat Zain  
**Date** : 18/12/2024



### Starting Point

**Site / Boundary Name** : Jalan Simpang Empat  
**Address** : Sekolah Menengah Kebangsaan Tun Abdul Razak  
**District** : Bagan Datuk  
**Postcode** : 36200  
**State** : Perak  
**GPS Coordinate** : 3.911036, 100.774149  
**LRD** : A

### End Point

**Site / Boundary Name** : Jalan Simpang Empat  
**Address** : Selekoh  
**District** : Bagan Datuk  
**Postcode** : 36200  
**State** : Perak  
**GPS Coordinate** : 3.905283, 100.778732  
**LRD** : B



PROJEK PENYEDIAAN DAN PENYELENGGARAAN POINT OF PRESENT (POP) FASA 2: HAB INFRASTRUKTUR GENTIAN OPTIK BERHAMPIRAN DENGAN SEKOLAH, KAWASAN PERINDUSTRIAN, PREMIS KERAJAAN DAN KOMUNITI SEKITARNYA OLEH KEMENTERIAN KOMUNIKASI MALAYSIA - ZON UTARA (KKMM.400-11/17/132(1))



## 1.0 WORK SUMMARY

NO	PROPOSED DISTANCE AND METHOD	UNIT	QUANTITY
1	Horizontal Directional Drilling (HDD)	m	0
2	Carriage Way Open Trench (CW)	m	0
3	Grass Verge Open Trenching (GV)	m	0
4	Micro Trenching (MT)	m	0
Total			0

NO	OTHER INFORMATION	UNIT	QUANTITY
1	Installation of Short Span ADSS Fiber Cables	m	2500
2	Install New Pole	ea	63
3	Install New JRC7 Manhole	ea	0
4	Install GI Riser 100mm	ea	0
5	Install Fiber Distribution Point	ea	13
6	Closure (Splicing, Termination and Testing)	ea	2



PROJEK PENYEDIAAN DAN PENYELENGGARAAN POINT OF PRESENT (POP) FASA 2: HAB INFRASTRUKTUR GENTIAN OPTIK BERHAMPIRAN DENGAN SEKOLAH, KAWASAN PERINDUSTRIAN, PREMIS KERAJAAN DAN KOMUNITI SEKITARNYA OLEH KEMENTERIAN KOMUNIKASI MALAYSIA - ZON UTARA (KKMM.400-11/17/132(1))



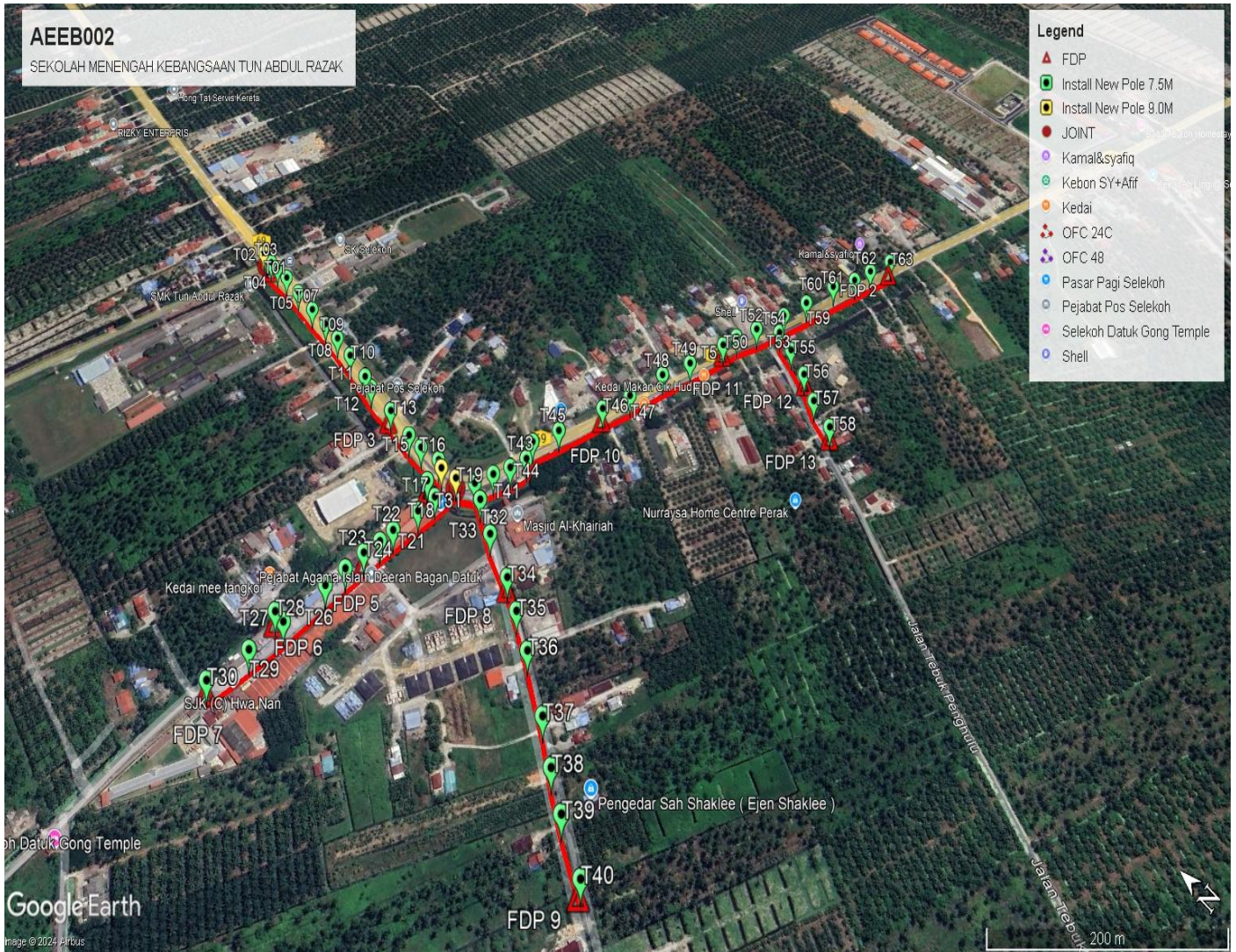
## 2.0 LOCAL AUTHORITY SUMMARY

Daerah Manjung

NO	ITEMS	Owner	Quantity	Distance (m)
1	HDD	JKR	-	-
		Majlis	-	-
		Estate / Private Land	-	-
2	New Pole	JKR	31	-
		Majlis	32	2500
		Estate / Private Land	-	-
<b>Total Distance (m)</b>				<b>2500</b>

### 3.0 SITE PLAN (KMZ)

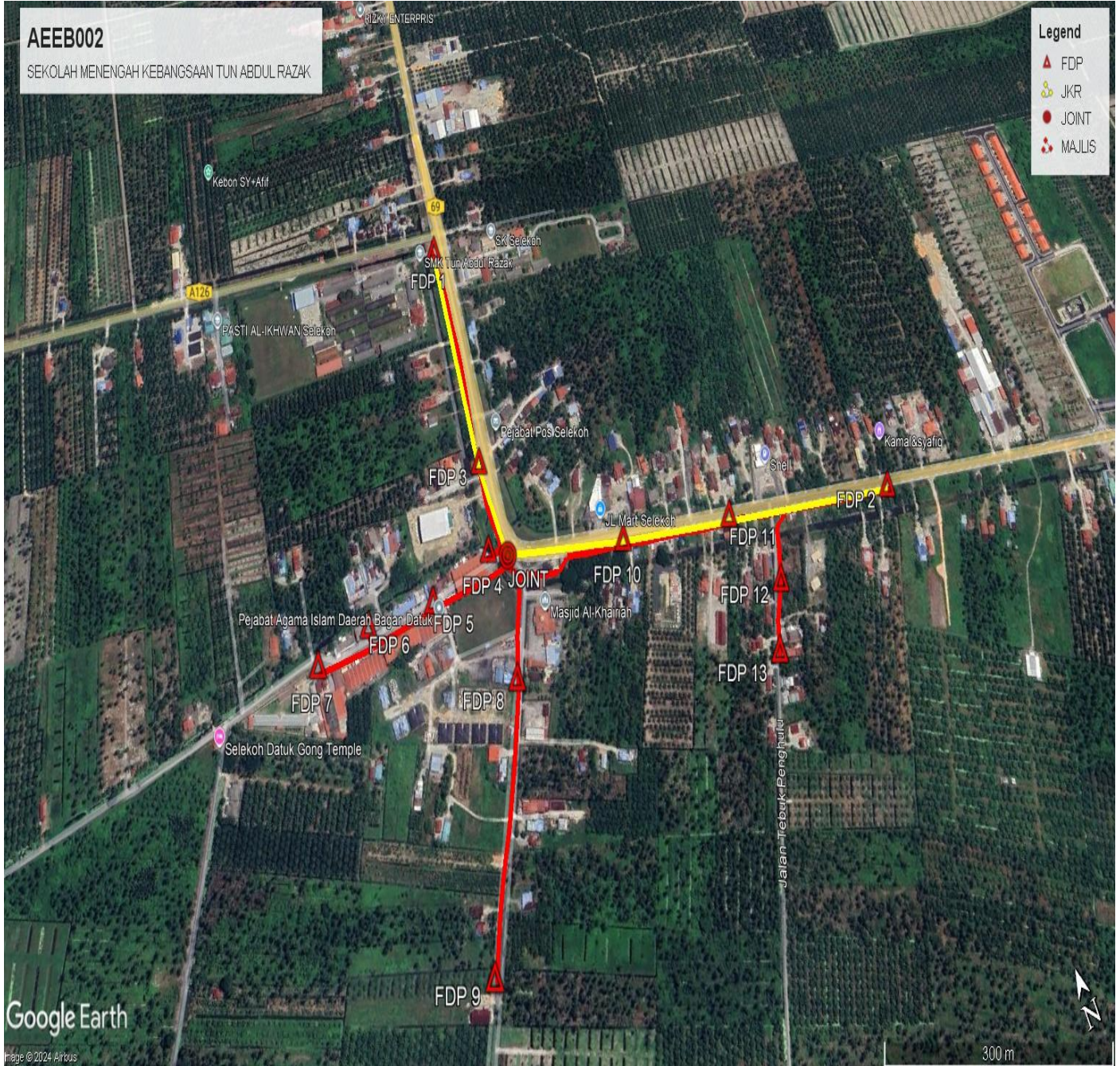
#### 3.1 Overview Site Area



### 3.2 Overview FDP Location



3.3 Site Plan - KMZ Routing (All Local Authority)



#### 4.0 PROPOSED NEW MANHOLE

Proposed New Manhole Coordinate					
No.	Manhole Number	Distance (m)	Latitude	Longitude	Local Authority
1	MH01	-	-	-	-
2	MH02	-	-	-	-

#### 5.0 PROPOSED NEW POLE

Proposed New Pole Coordinate					
No.	Pole Number	Distance (m)	Latitude	Longitude	Local Authority
1	T001 (OLT&FDC)	9	3.911036	100.774149	JKR
2	T002 (JOINT)	13	3.910960	100.774126	JKR
3	T003 (FDP 1)	14	3.910852	100.774112	JKR
4	T004	22	3.910727	100.774107	JKR
5	T005	29	3.910537	100.774088	JKR
6	T006	36	3.910281	100.774048	JKR
7	T007	32	3.909962	100.773992	JKR
8	T008	29	3.909679	100.773951	JKR
9	T009	33	3.909418	100.773904	JKR
10	T010	38	3.909126	100.773837	JKR
11	T011	19	3.908795	100.773760	JKR
12	T012	41	3.908642	100.773711	JKR
13	T013 (FDP 3)	41	3.908277	100.773657	JKR
14	T014	23	3.907917	100.773580	JKR
15	T015	26	3.907721	100.773563	JKR
16	T016	11	3.907482	100.773578	JKR
17	T017	21	3.907398	100.773535	Majlis Perbandaran Teluk Intan
18	T018 (FDP 4)	21	3.907403	100.773348	Majlis Perbandaran Teluk Intan
19	T019 (JOINT)	22	3.907212	100.773552	Majlis Perbandaran Teluk Intan
20	T020	30	3.907224	100.773278	Majlis Perbandaran Teluk Intan
21	T021	23	3.907237	100.773072	Majlis Perbandaran Teluk Intan
22	T022	32	3.907273	100.772785	Majlis Perbandaran Teluk Intan
23	T023	18	3.907286	100.772632	Majlis Perbandaran Teluk Intan
24	T024 (FDP 5)	19	3.907317	100.772461	Majlis Perbandaran Teluk Intan
25	T025	24	3.907330	100.772250	Majlis Perbandaran Teluk Intan
26	T026	25	3.907352	100.772032	Majlis Perbandaran Teluk Intan
27	T027	50	3.907389	100.771582	Majlis Perbandaran Teluk Intan
28	T028 (FDP 6)	15	3.907520	100.771594	Majlis Perbandaran Teluk Intan
29	T029	38	3.907430	100.771239	Majlis Perbandaran Teluk Intan
30	T030 (FDP 7)	44	3.907493	100.770847	Majlis Perbandaran Teluk Intan
31	T031	22	3.907032	100.773635	Majlis Perbandaran Teluk Intan
32	T032	21	3.906871	100.773547	Majlis Perbandaran Teluk Intan



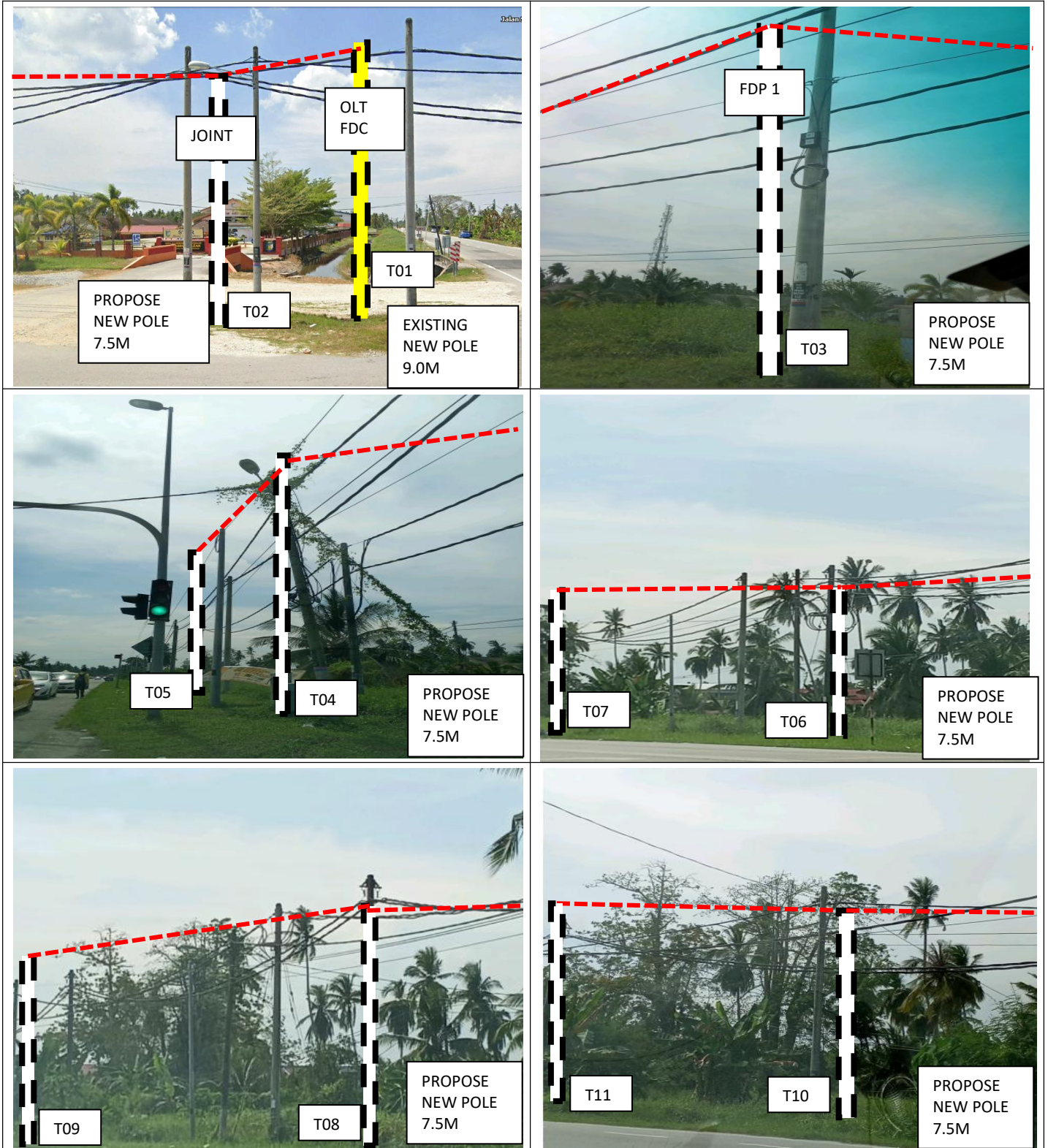
PROJEK PENYEDIAAN DAN PENYELENGGARAAN POINT OF PRESENT (POP) FASA 2: HAB INFRASTRUKTUR GENTIAN OPTIK BERHAMPIRAN DENGAN SEKOLAH, KAWASAN PERINDUSTRIAN, PREMIS KERAJAAN DAN KOMUNITI SEKITARNYA OLEH KEMENTERIAN KOMUNIKASI MALAYSIA - ZON UTARA (KKMM.400-11/17/132(1))

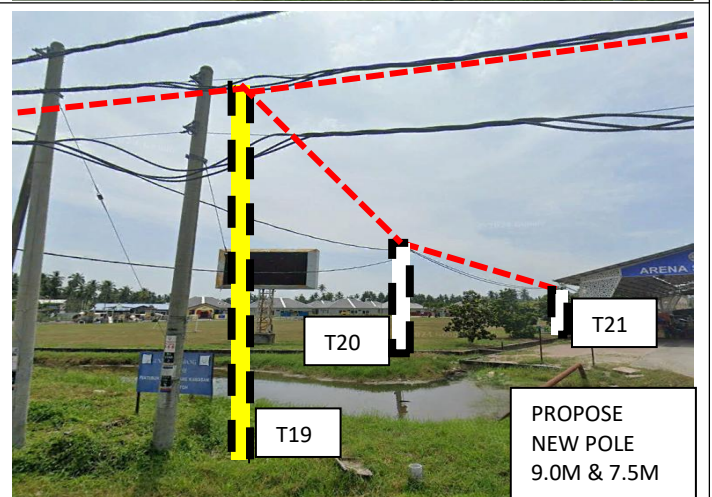
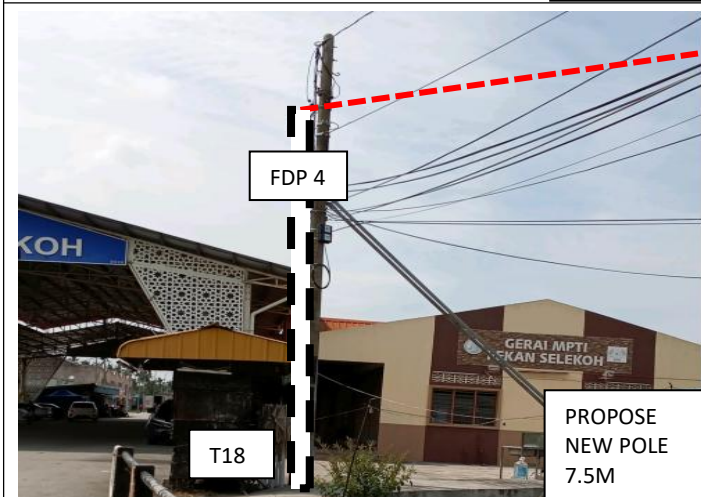
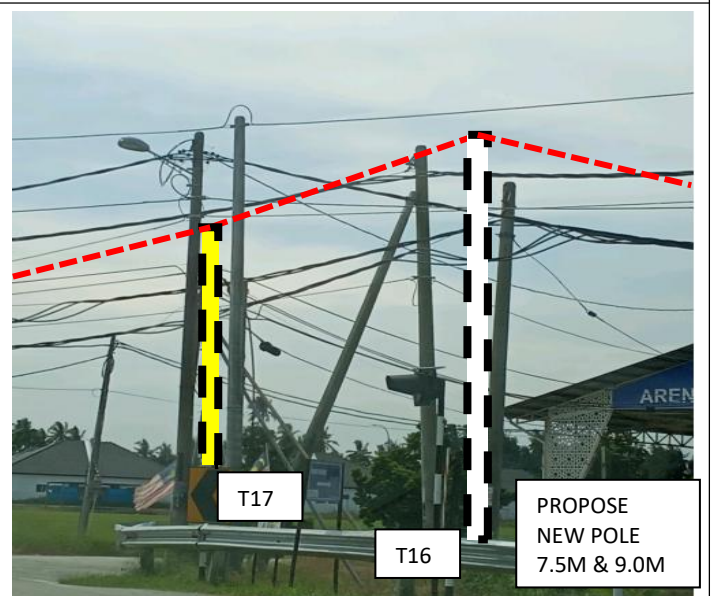
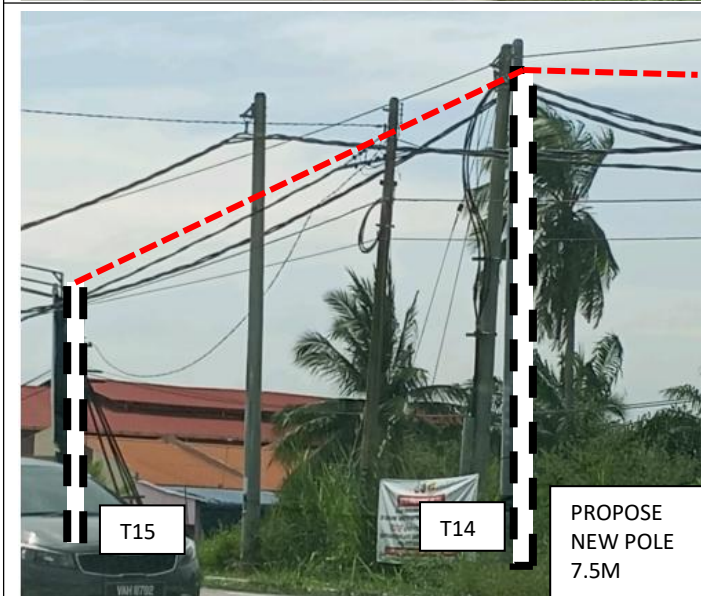
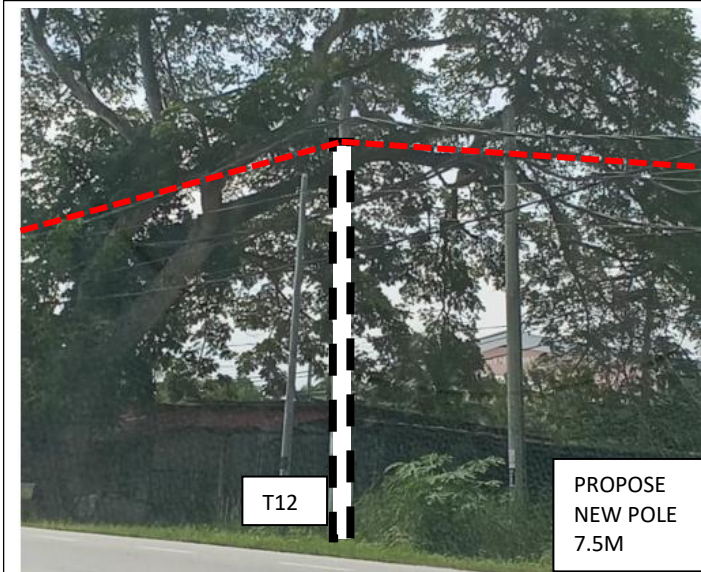


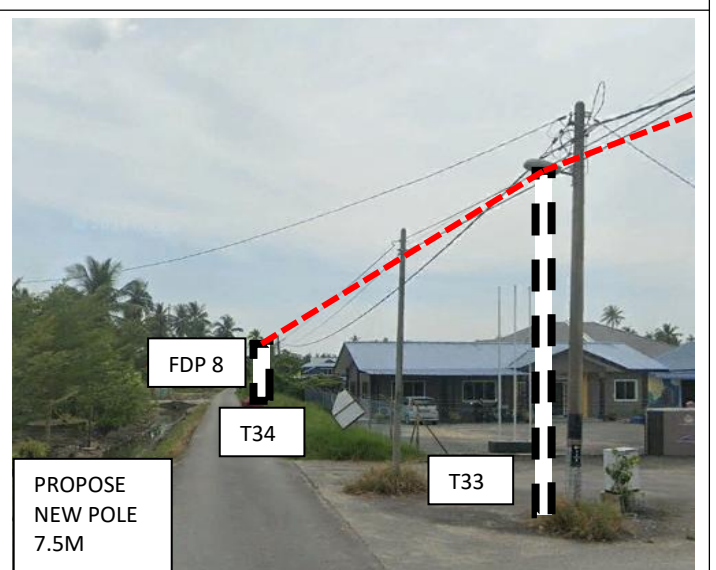
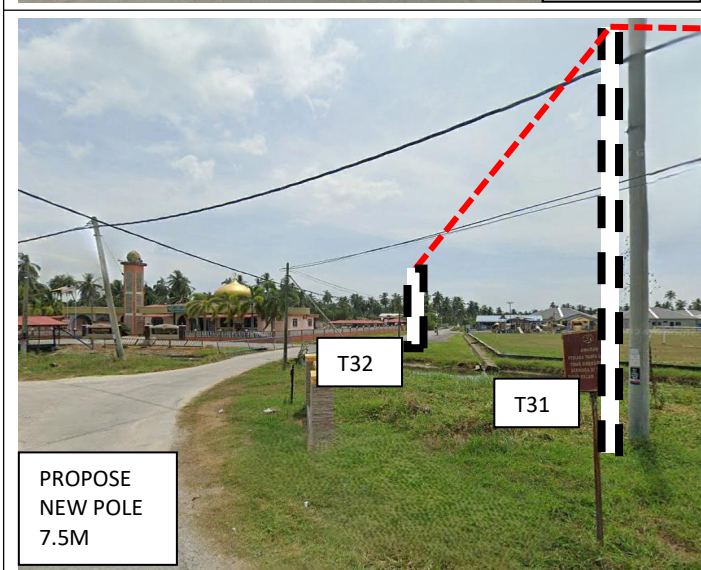
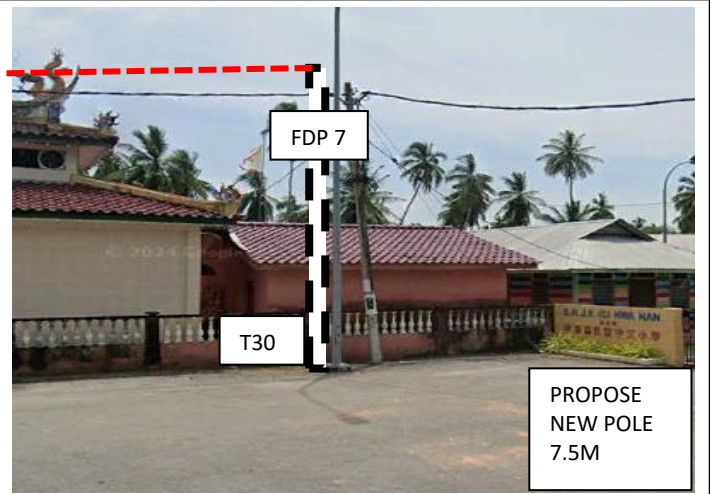
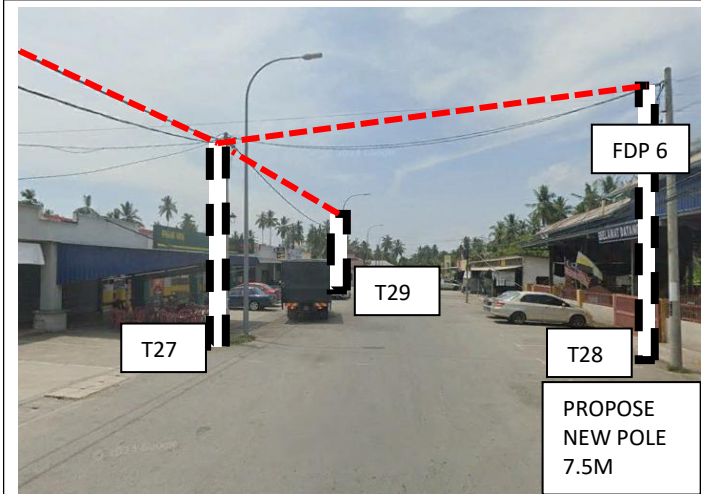
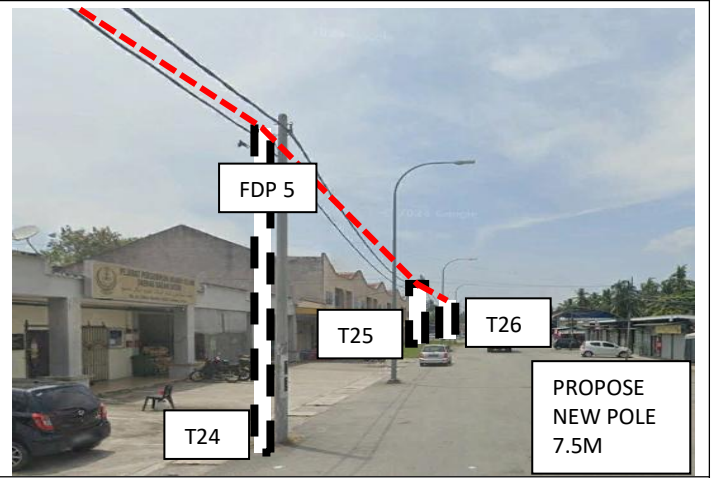
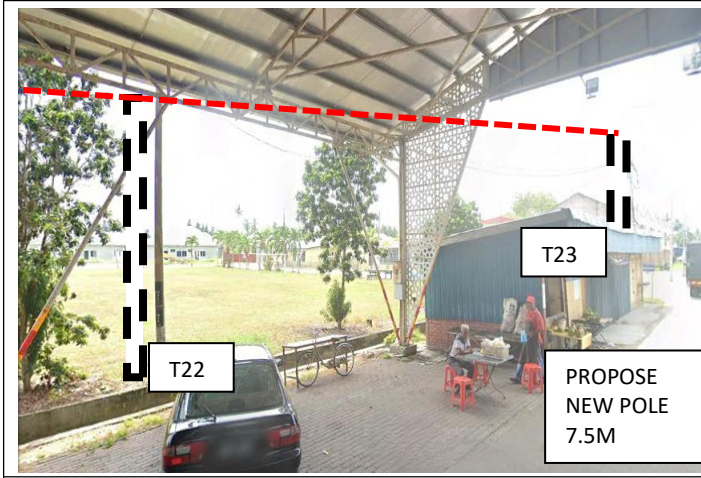
**Proposed New Pole Coordinate**

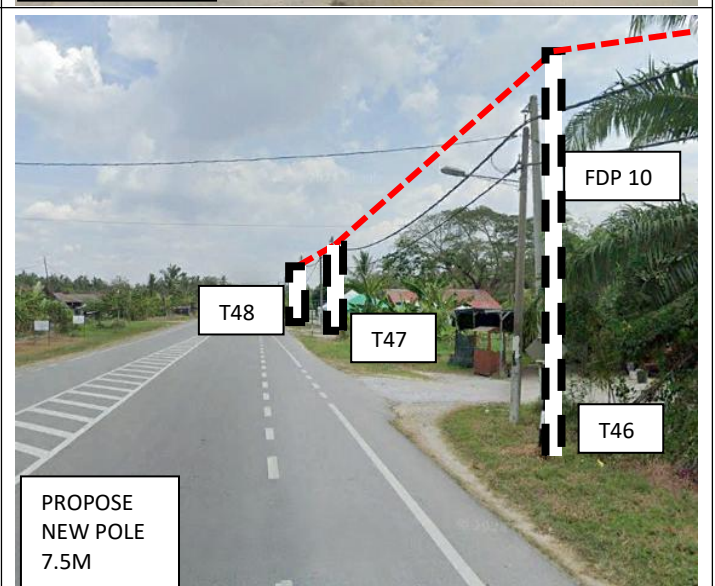
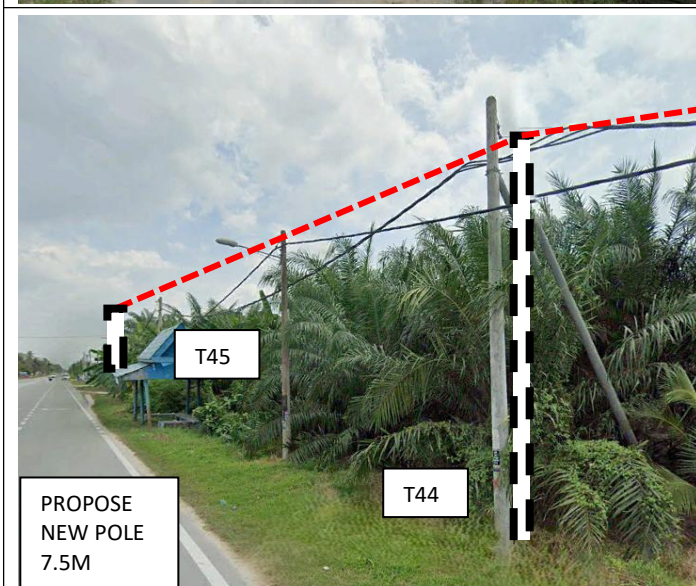
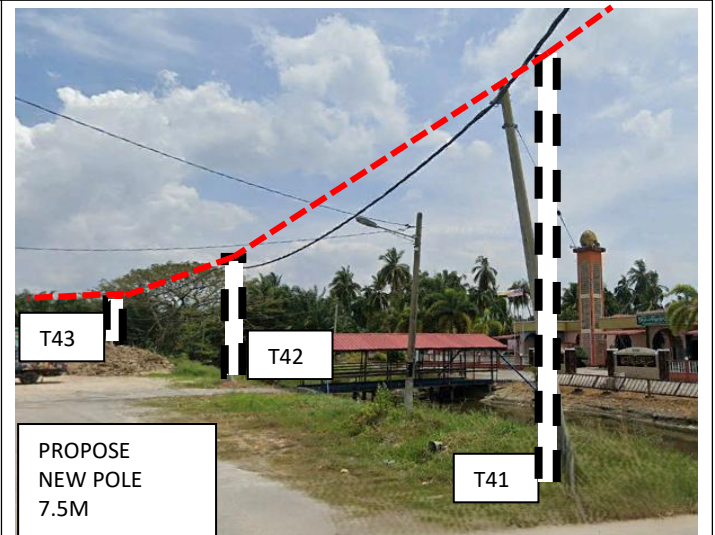
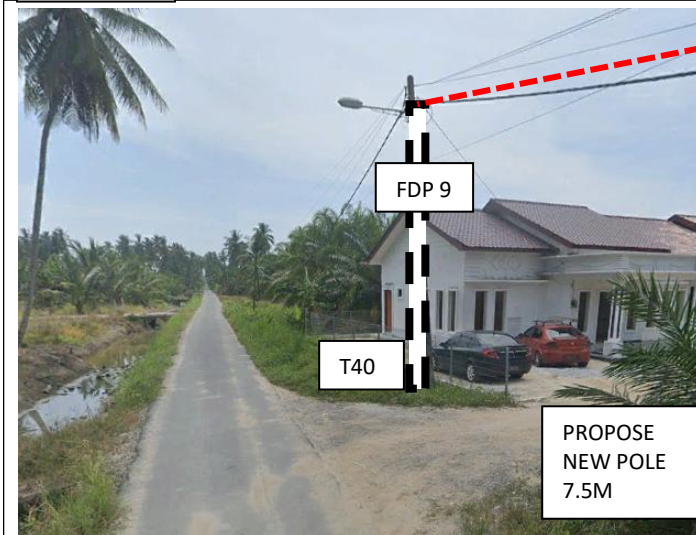
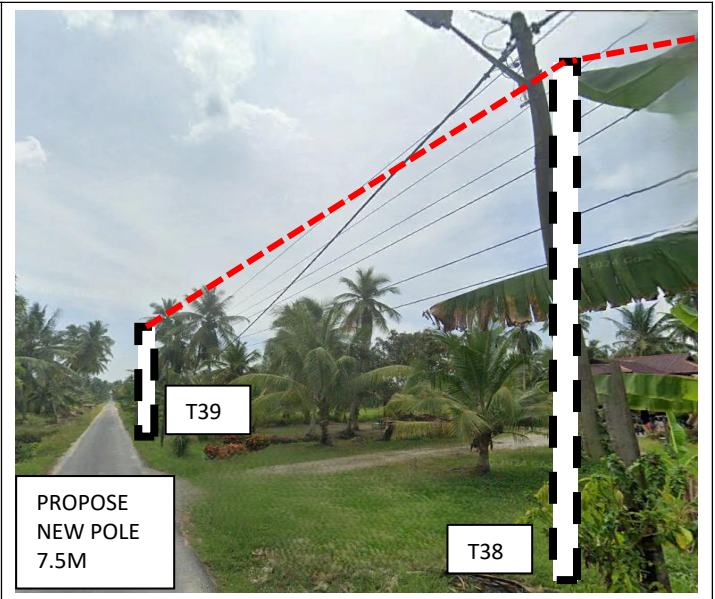
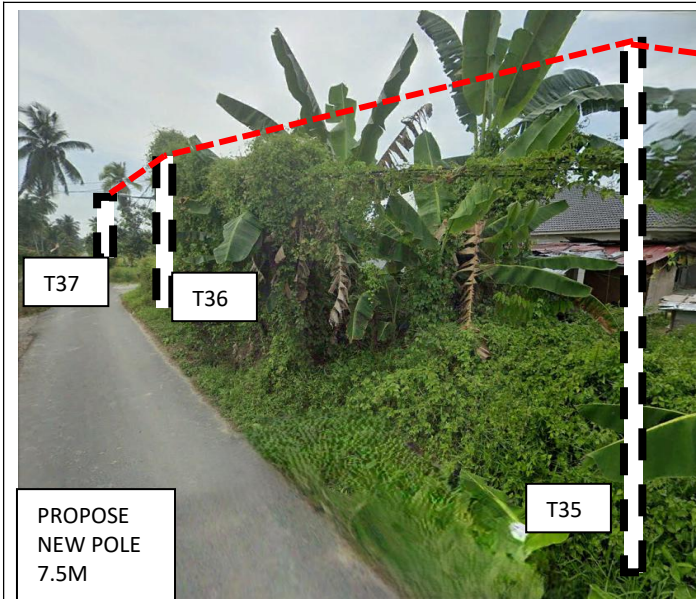
No.	Pole Number	Distance (m)	Latitude	Longitude	Local Authority
33	T033	41	3.906552	100.773357	Majlis Perbandaran Teluk Intan
34	T034 (FDP 8)	53	3.906125	100.773147	Majlis Perbandaran Teluk Intan
35	T035	37	3.905841	100.772970	Majlis Perbandaran Teluk Intan
36	T036	53	3.905531	100.772780	Majlis Perbandaran Teluk Intan
37	T037	44	3.905106	100.772493	Majlis Perbandaran Teluk Intan
38	T038	49	3.904750	100.772222	Majlis Perbandaran Teluk Intan
39	T039	38	3.904453	100.772061	Majlis Perbandaran Teluk Intan
40	T040 (FDP 9)	50	3.904064	100.771797	Majlis Perbandaran Teluk Intan
41	T041	22	3.906960	100.773820	Majlis Perbandaran Teluk Intan
42	T042	20	3.906878	100.773977	Majlis Perbandaran Teluk Intan
43	T043	21	3.906817	100.774147	Majlis Perbandaran Teluk Intan
44	T044	22	3.906896	100.774324	JKR
45	T045	43	3.906775	100.774697	JKR
46	T046 (FDP 10)	46	3.906609	100.775084	JKR
47	T047	36	3.906483	100.775380	JKR
48	T048	45	3.906365	100.775783	JKR
49	T049	37	3.906230	100.776092	JKR
50	T050 (FDP 11)	36	3.906154	100.776392	JKR
51	T051	35	3.906044	100.776690	JKR
52	T052	30	3.905937	100.776929	JKR
53	T053	43	3.905820	100.777297	JKR
54	T054	26	3.905727	100.777068	Majlis Perbandaran Teluk Intan
55	T055	29	3.905501	100.776951	Majlis Perbandaran Teluk Intan
56	T056 (FDP 12)	37	3.905220	100.776768	Majlis Perbandaran Teluk Intan
57	T057	38	3.904960	100.776545	Majlis Perbandaran Teluk Intan
58	T058 (FDP 13)	38	3.904666	100.776381	Majlis Perbandaran Teluk Intan
59	T059	36	3.905721	100.777609	JKR
60	T060	43	3.905600	100.777982	JKR
61	T061	30	3.905459	100.778220	JKR
62	T062	28	3.905388	100.778455	JKR
63	T063 (FDP 2)	33	3.905283	100.778732	JKR

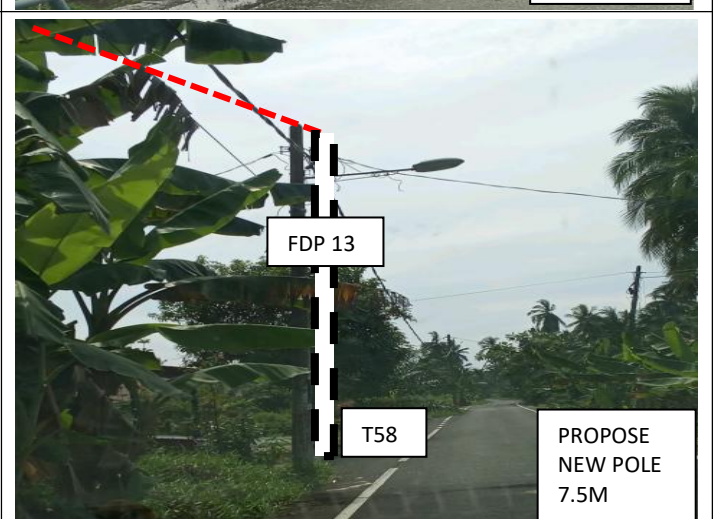
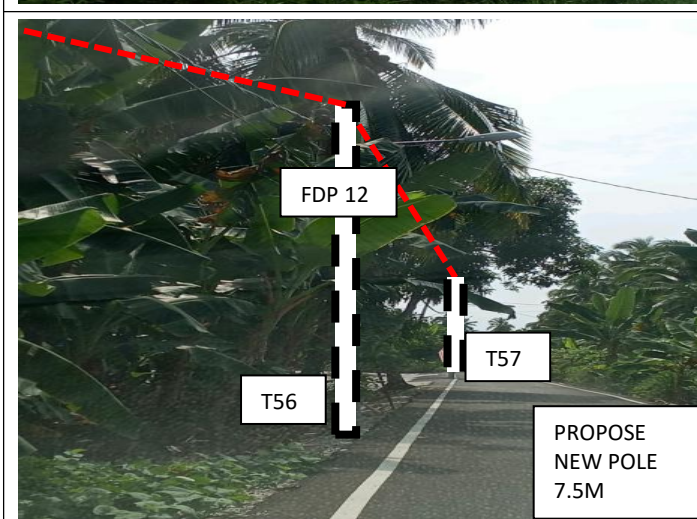
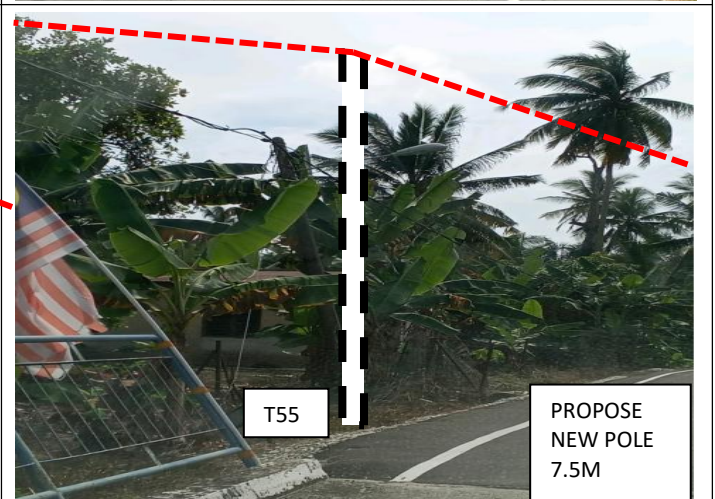
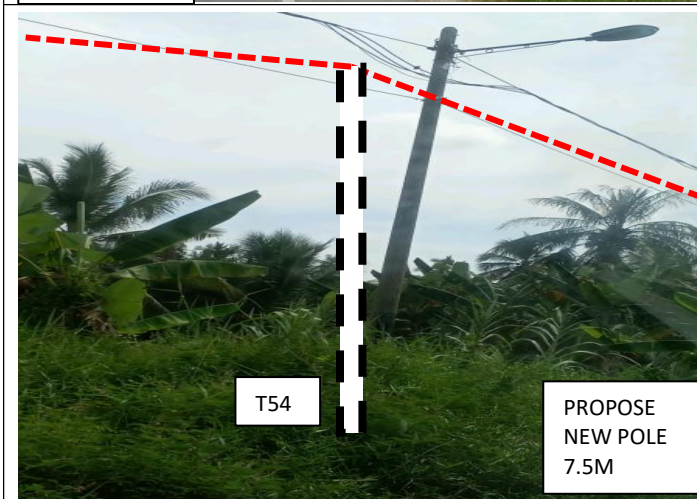
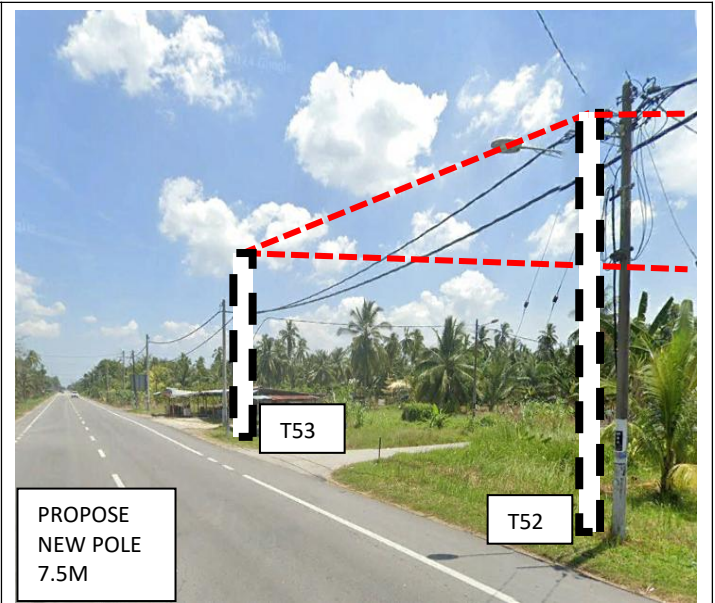
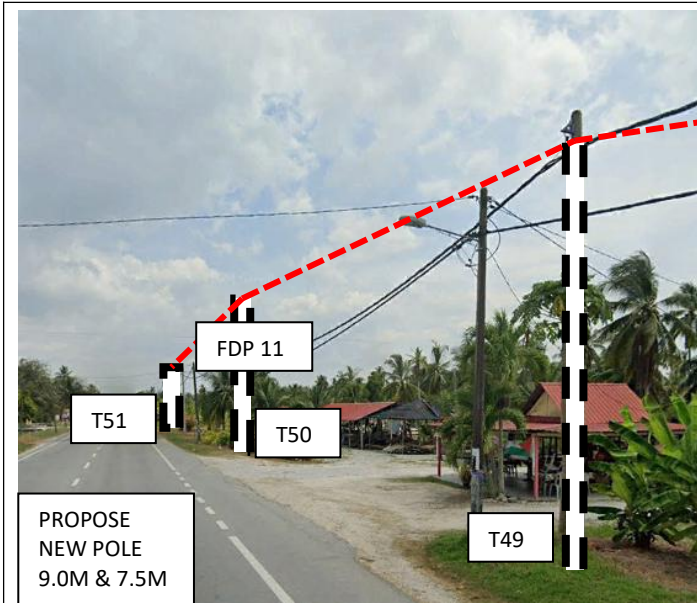
**6.0 SITE PHOTOS - PROPOSED NEW POLE**

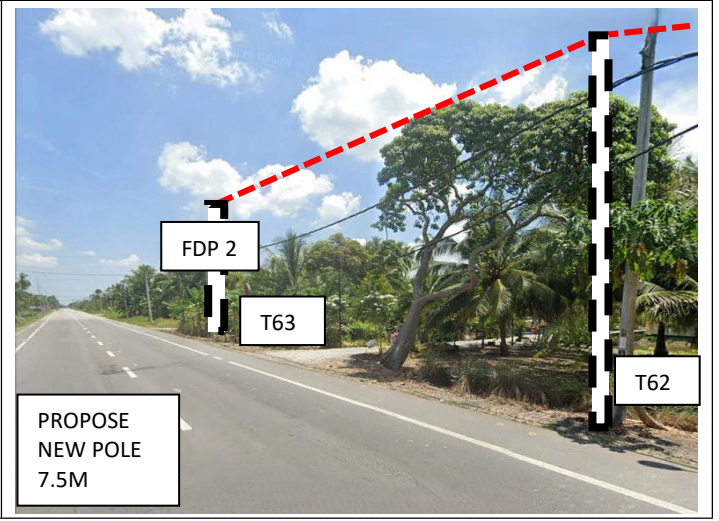
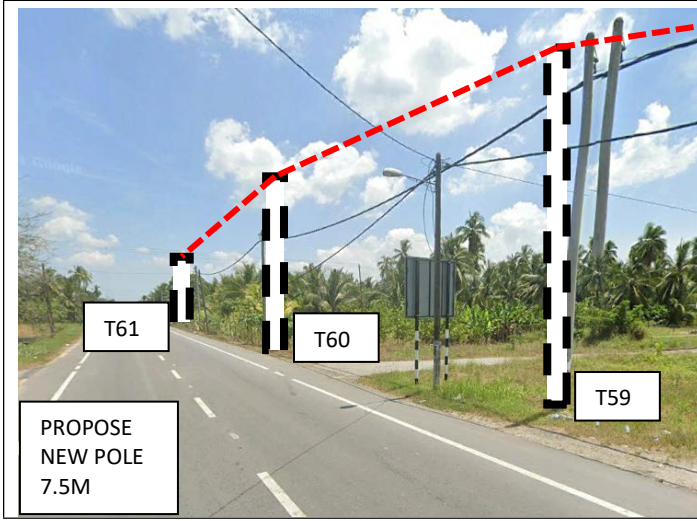














PROJEK PENYEDIAAN DAN PENYELENGGARAAN POINT OF PRESENT (POP) FASA 2: HAB INFRASTRUKTUR GENTIAN OPTIK BERHAMPIRAN DENGAN SEKOLAH, KAWASAN PERINDUSTRIAN, PREMIS KERAJAAN DAN KOMUNITI SEKITARNYA OLEH KEMENTERIAN KOMUNIKASI MALAYSIA - ZON UTARA (KKMM.400-11/17/132(1))

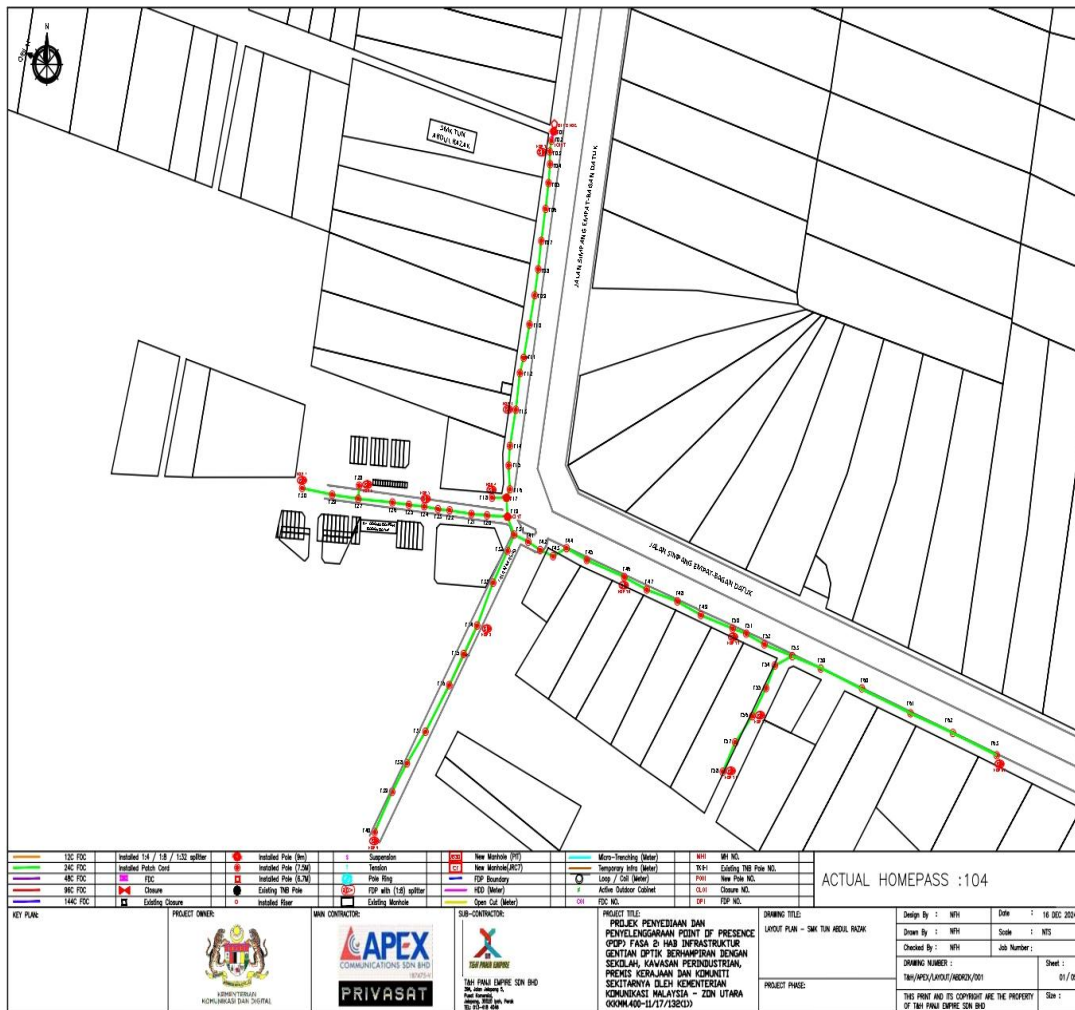


## 7.0 3<sup>rd</sup> PARTIES DEPENDENCIES

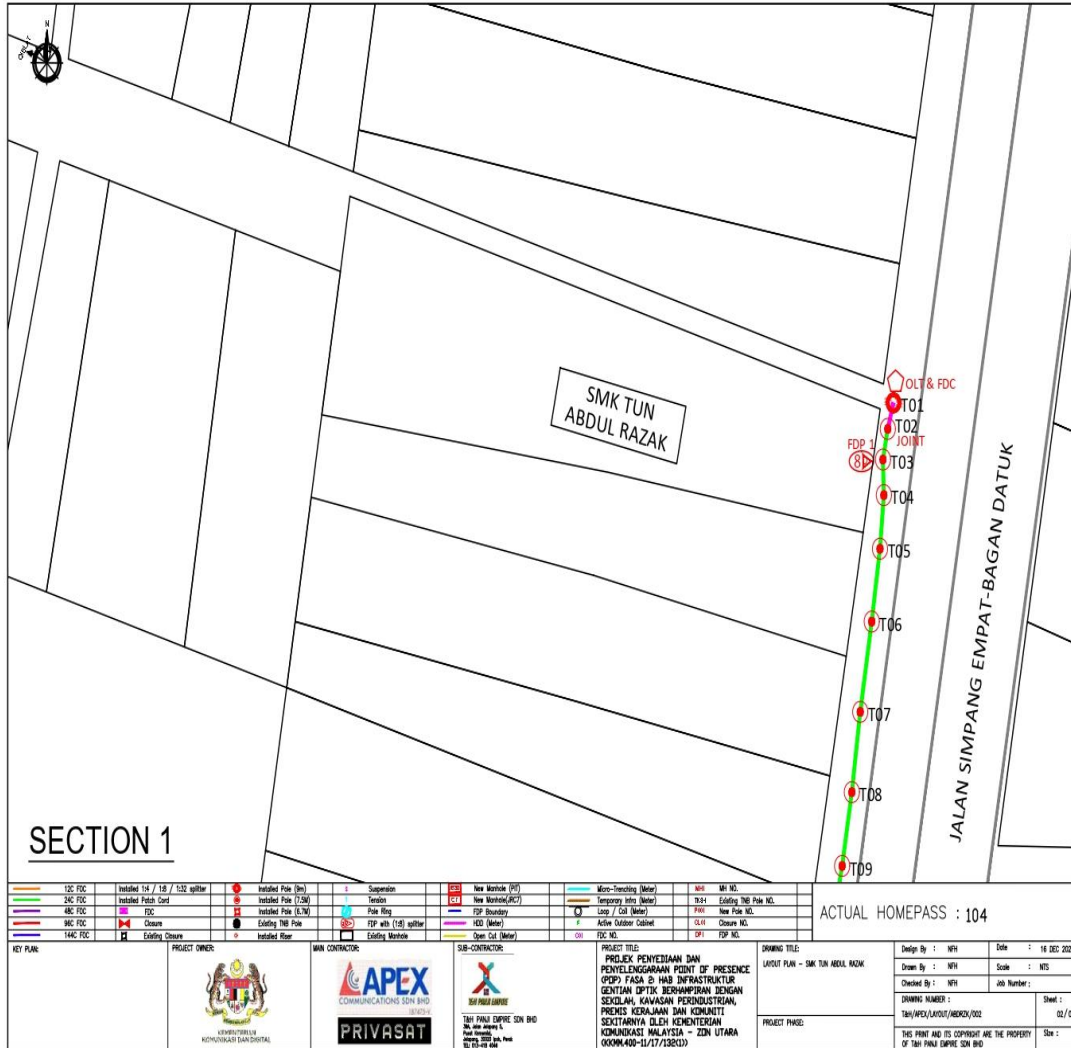
NO	LOCAL COUNCIL / AUTHORITY	REMARK
1	Majlis Perbandaran Teluk Intan	1000M
2	JKR	1500M

## 8.0 Drawing

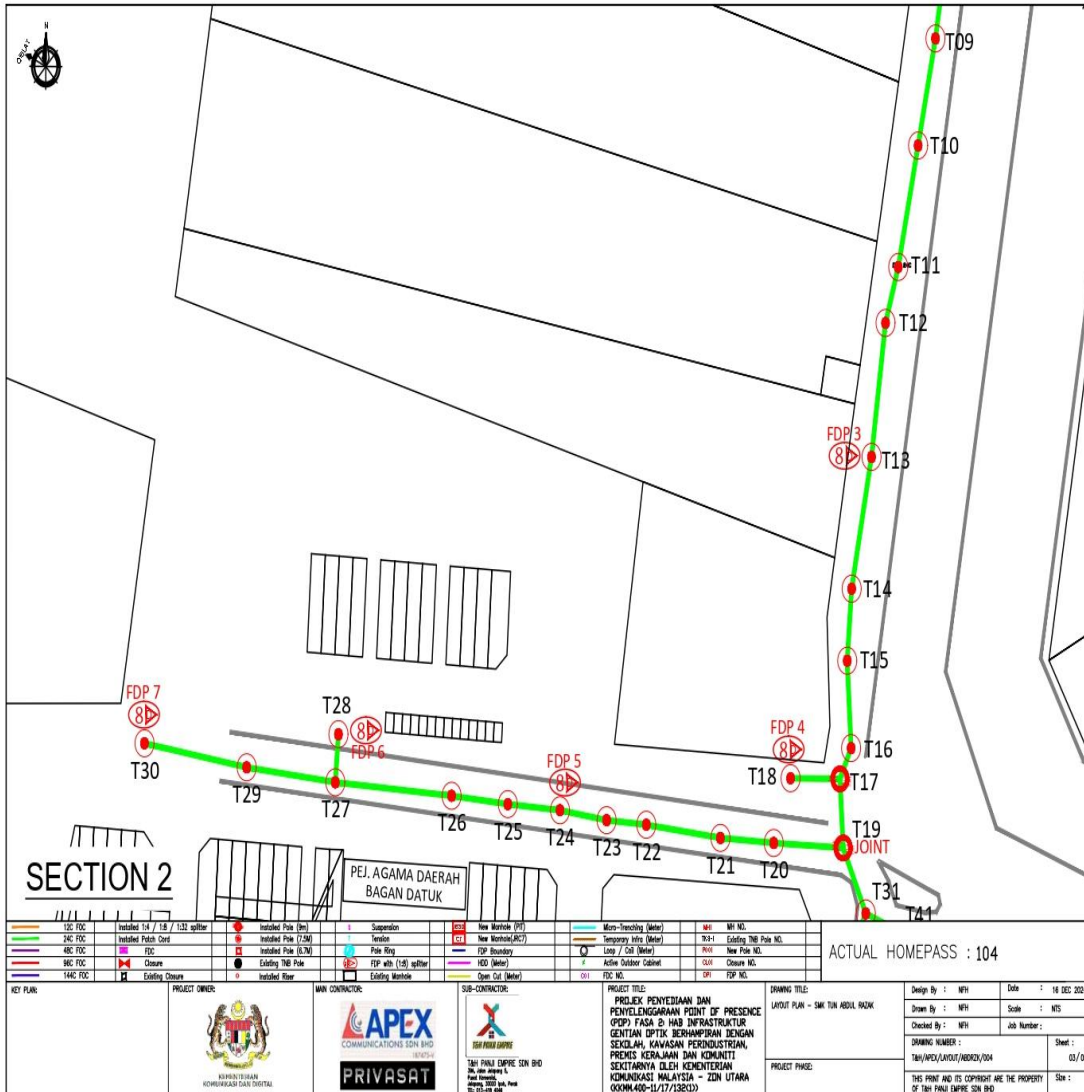
### Layout 1



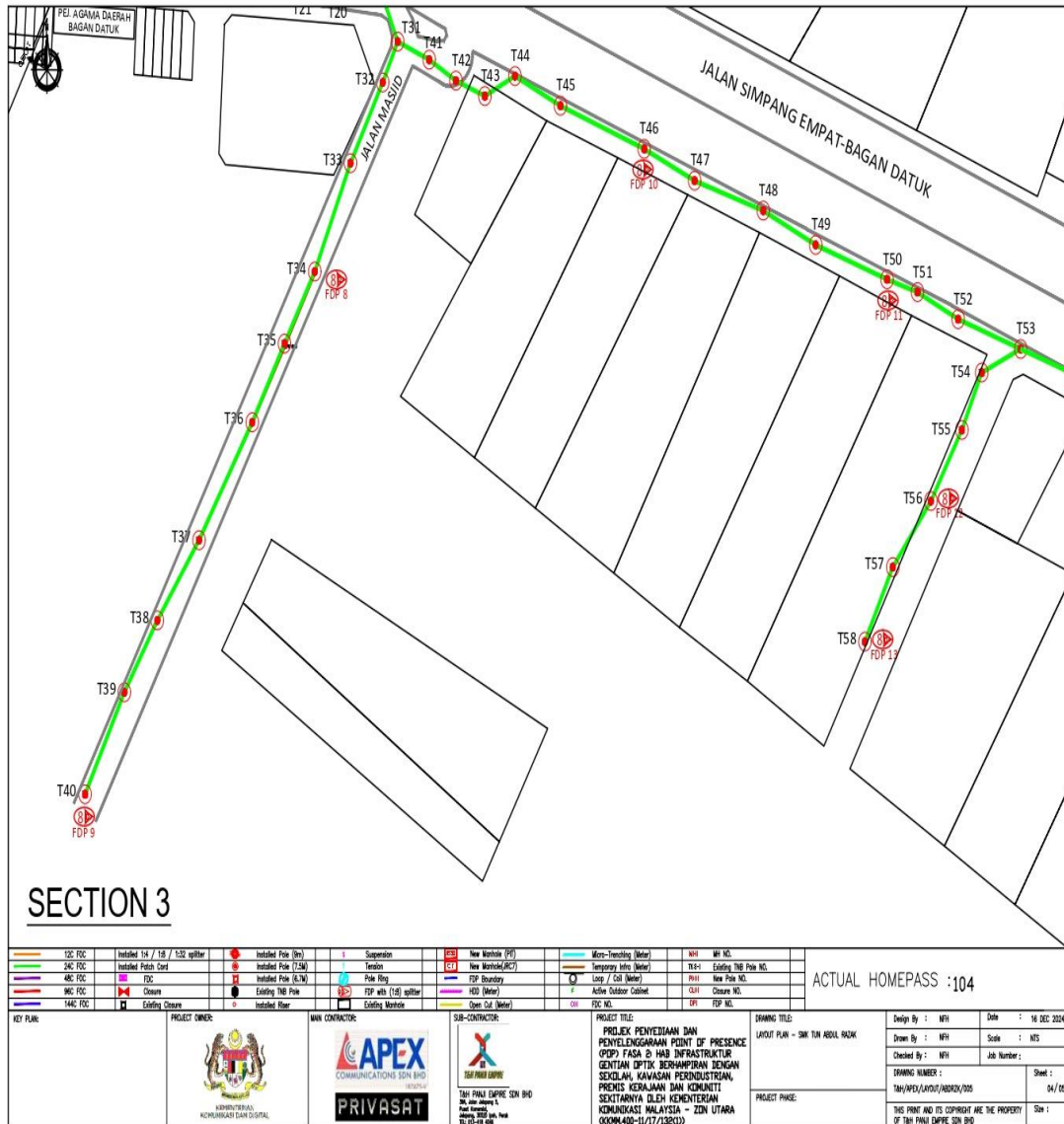
Layout 2



Layout 3



Layout 4



Layout 5

