

## TECHNICAL PROPOSAL POP2 AEAB006 SEKOLAH MENENGAH SAINS BAGAN DATOH (D-SIDE)

**Company Name** : T&H PANJI EMPIRE SDN BHD  
**Company Address** : 39A Jalan Jelapang 5, Pusat Komersial Jelapang, 30020 Ipoh, Perak Darul Ridzuan.  
**Prepared By** : Mat Salleh Bin Mat Zain  
**Date** : 23/12/2024



### Starting Point

**Site / Boundary Name** : BAGAN DATUK  
**Address** : JALAN DATOH  
**District** : BAGAN DATUK  
**Postcode** : 36100  
**State** : Perak  
**GPS Coordinate** : 3.975188, 100.786393  
**LRD** : A

### End Point

**Site / Boundary Name** : BAGAN DATUK  
**Address** : PERUMAHAN AWAN 2  
**District** : BAGAN DATUK  
**Postcode** : 36100  
**State** : Perak  
**GPS Coordinate** : 3.980546, 100.788059  
**LRD** : B



PROJEK PENYEDIAAN DAN PENYELENGGARAAN POINT OF PRESENT (POP) FASA 2: HAB INFRASTUKTUR GENTIAN OPTIK BERHAMPIRAN DENGAN SEKOLAH, KAWASAN PERINDUSTRIAN, PREMIS KERAJAAN DAN KOMUNITI SEKITARNYA OLEH KEMENTERIAN KOMUNIKASI MALAYSIA - ZON UTARA (KKMM.400-11/17/132(1))



## 1.0 WORK SUMMARY

NO	PROPOSED DISTANCE AND METHOD	UNIT	QUANTITY
1	Horizontal Directional Drilling (HDD)	m	79
2	Carriage Way Open Trench (CW)	m	0
3	Grass Verge Open Trenching (GV)	m	0
4	Micro Trenching (MT)	m	0
Total			79M

NO	OTHER INFORMATION	UNIT	QUANTITY
1	Installation of Short Span ADSS Fiber Cables	m	2300
2	Install New Pole	ea	55
3	Install New JRC7 Manhole	ea	2
4	Install GI Riser 100mm	ea	2
5	Install Fiber Distribution Point	ea	22
6	Closure (Splicing, Termination and Testing)	ea	3



PROJEK PENYEDIAAN DAN PENYELENGGARAAN POINT OF PRESENT (POP) FASA 2: HAB INFRASTRUKTUR GENTIAN OPTIK BERHAMPIRAN DENGAN SEKOLAH, KAWASAN PERINDUSTRIAN, PREMIS KERAJAAN DAN KOMUNITI SEKITARNYA OLEH KEMENTERIAN KOMUNIKASI MALAYSIA - ZON UTARA (KKMM.400-11/17/132(1))



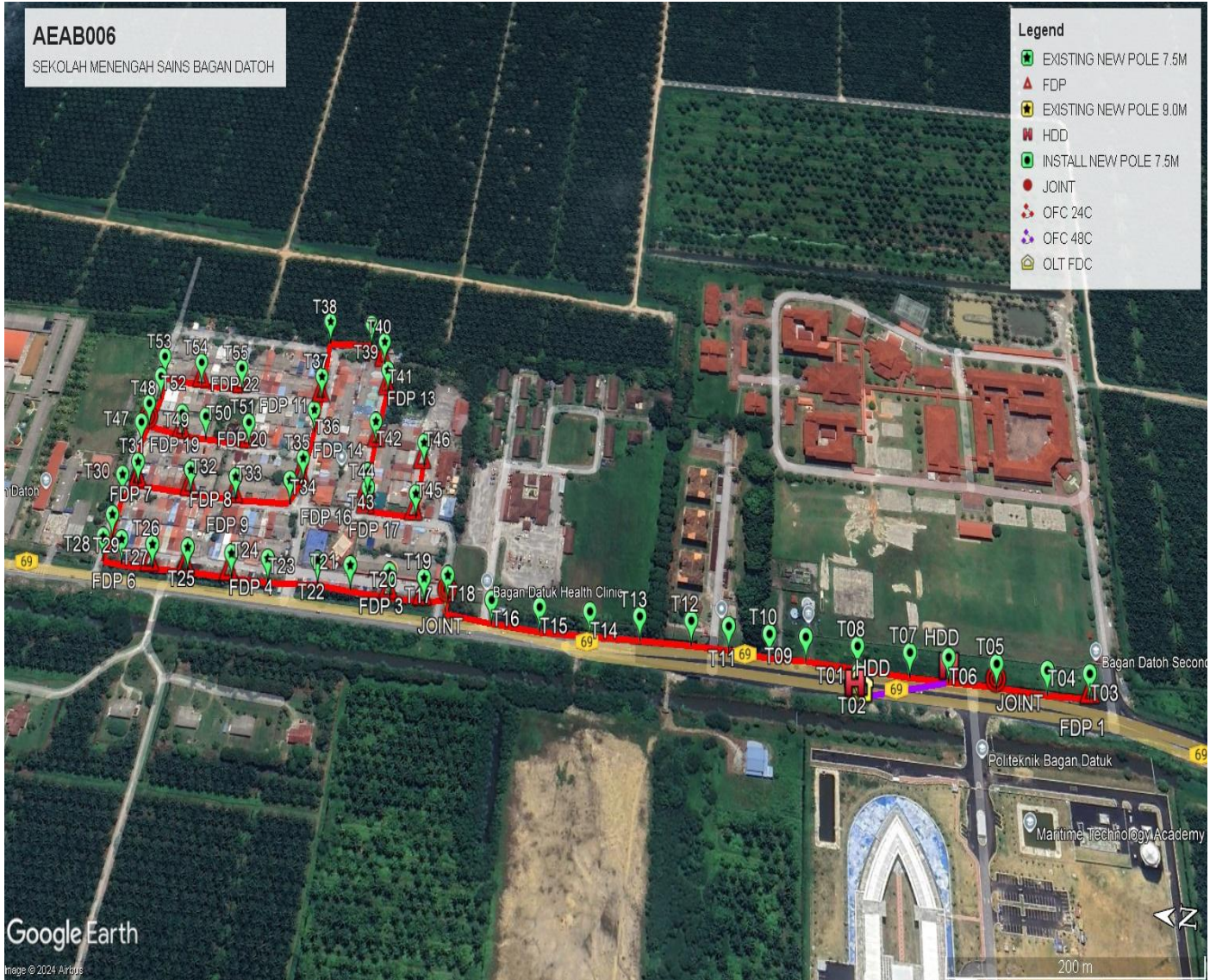
## 2.0 LOCAL AUTHORITY SUMMARY

Majlis Perbandaran Teluk Intan & JKR Teluk Intan

NO	ITEMS	Owner	Quantity	Distance (m)
1	HDD	JKR	1	79
		Majlis	-	-
		Estate / Private Land	-	-
2	New Pole	JKR	17	621
		Majlis	38	1600
		Estate / Private Land	-	-
<b>Total Distance (m)</b>				<b>2300M</b>

### 3.0 SITE PLAN (KMZ)

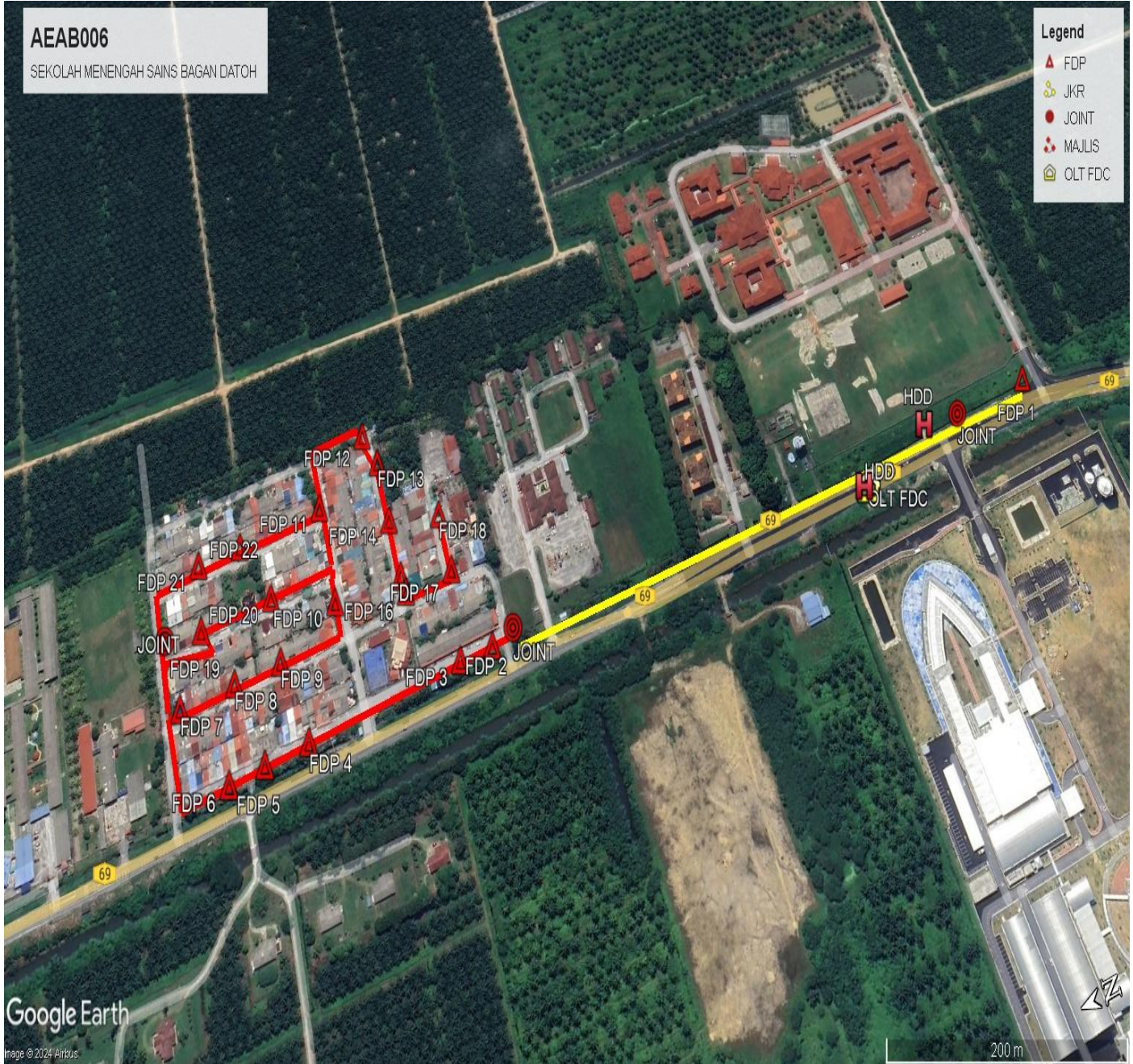
#### 3.1 Overview Site Area



3.2 Overview FDP Location



3.3 Site Plan - KMZ Routing (All Local Authority)



Red Colour - Majlis Road  
Yellow Colour - JKR Road



PROJEK PENYEDIAAN DAN PENYELENGGARAAN POINT OF PRESENT (POP) FASA 2: HAB INFRASTUKTUR GENTIAN OPTIK BERHAMPIRAN DENGAN SEKOLAH, KAWASAN PERINDUSTRIAN, PREMIS KERAJAAN DAN KOMUNITI SEKITARNYA OLEH KEMENTERIAN KOMUNIKASI MALAYSIA - ZON UTARA (KKMM.400-11/17/132(1))



#### 4.0 PROPOSED NEW MANHOLE

Proposed New Manhole Coordinate					
No.	Manhole Number	Distance (m)	Latitude	Longitude	Local Authority
1	MH01	79	3.975220	100.786410	JKR TELUK INTAN
2	MH02	-	3.974493	100.786592	JKR TELUK INTAN

## 5.0 PROPOSED NEW POLE

Proposed New Pole Coordinate					
No.	Pole Number	Distance (m)	Latitude	Longitude	Local Authority
1	T001 (OLT&FDC)	5	3.975188	100.786393	JKR TELUK INTAN
2	T002 (HDD)	5	3.975191	100.786436	JKR TELUK INTAN
3	T003 (FDP 1)	36	3.973421	100.786612	JKR TELUK INTAN
4	T004	42	3.973743	100.786599	JKR TELUK INTAN
5	T005 (JOINT)	40	3.974128	100.786601	JKR TELUK INTAN
6	T006 (HDD)	33	3.974495	100.786604	JKR TELUK INTAN
7	T007	45	3.974792	100.786603	JKR TELUK INTAN
8	T008	44	3.975195	100.786602	JKR TELUK INTAN
9	T009	32	3.975596	100.786619	JKR TELUK INTAN
10	T010	34	3.975879	100.786609	JKR TELUK INTAN
11	T011	32	3.976199	100.786626	JKR TELUK INTAN
12	T012	45	3.976494	100.786631	JKR TELUK INTAN
13	T013	43	3.976899	100.786617	JKR TELUK INTAN
14	T014	45	3.977293	100.786608	JKR TELUK INTAN
15	T015	43	3.977693	100.786596	JKR TELUK INTAN
16	T016	42	3.978079	100.786603	JKR TELUK INTAN
17	T017	14	3.978460	100.786643	JKR TELUK INTAN
18	T018	21	3.978456	100.786730	MAJLIS PERBANDARAN TELUK INTAN
19	T019 (FDP 2)	32	3.978642	100.786692	MAJLIS PERBANDARAN TELUK INTAN
20	T020 (FDP 3)	35	3.978925	100.786703	MAJLIS PERBANDARAN TELUK INTAN
21	T021	31	3.979251	100.786715	MAJLIS PERBANDARAN TELUK INTAN
22	T022	45	3.979522	100.786721	MAJLIS PERBANDARAN TELUK INTAN
23	T023	33	3.979925	100.786691	MAJLIS PERBANDARAN TELUK INTAN
24	T024 (FDP 4)	41	3.980228	100.786695	MAJLIS PERBANDARAN TELUK INTAN
25	T025 (FDP 5)	32	3.980594	100.786700	MAJLIS PERBANDARAN TELUK INTAN
26	T026 (FDP 6)	29	3.980885	100.786689	MAJLIS PERBANDARAN TELUK INTAN
27	T027	17	3.981147	100.786698	MAJLIS PERBANDARAN TELUK INTAN
28	T028	18	3.981304	100.786701	MAJLIS PERBANDARAN TELUK INTAN
29	T029	32	3.981285	100.786860	MAJLIS PERBANDARAN TELUK INTAN
30	T030	17	3.981303	100.787149	MAJLIS PERBANDARAN TELUK INTAN
31	T031 (FDP 7)	50	3.981205	100.787255	MAJLIS PERBANDARAN TELUK INTAN
32	T032 (FDP 8)	43	3.980744	100.787243	MAJLIS PERBANDARAN TELUK INTAN



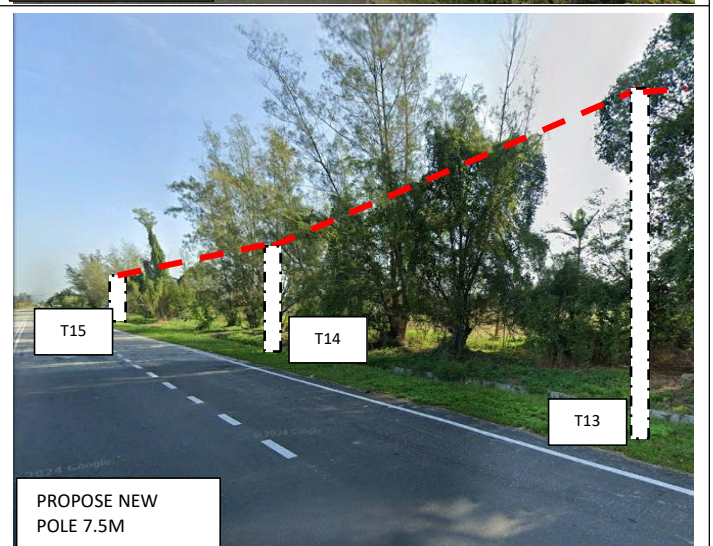
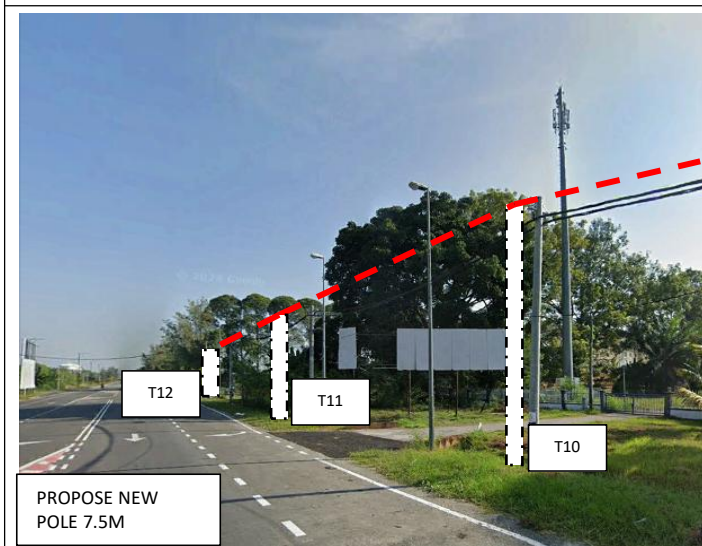
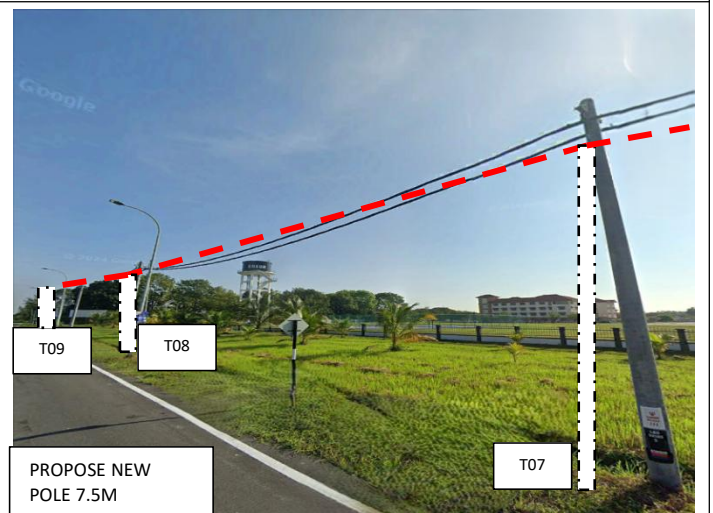
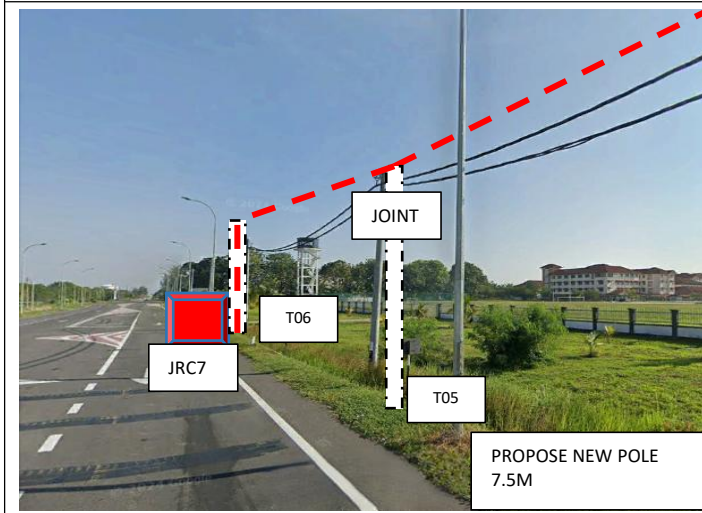
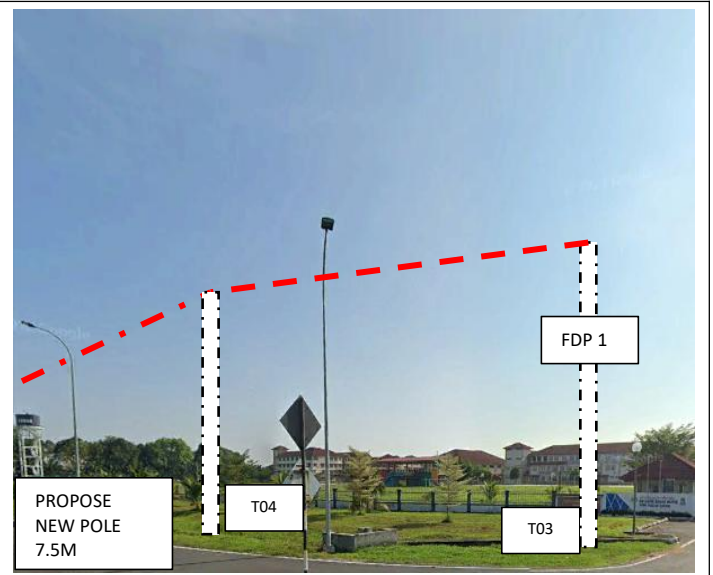
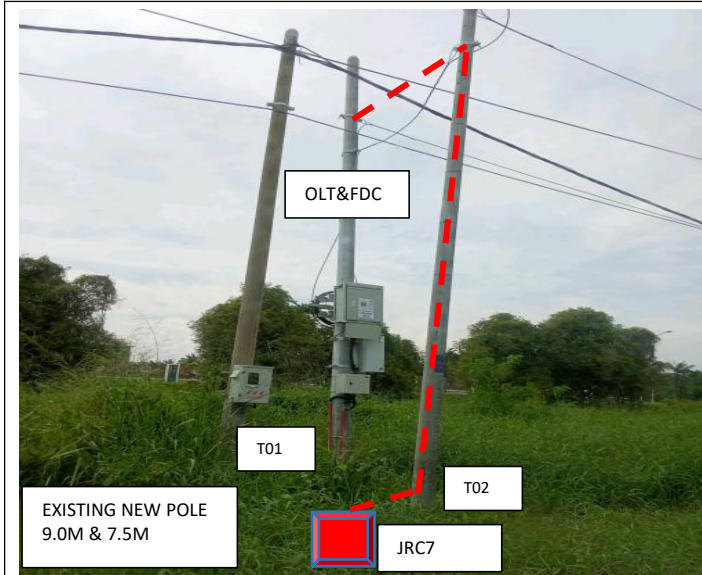
PROJEK PENYEDIAAN DAN PENYELENGGARAAN POINT OF PRESENT (POP) FASA 2: HAB INFRASTRUKTUR GENTIAN OPTIK BERHAMPIRAN DENGAN SEKOLAH, KAWASAN PERINDUSTRIAN, PREMIS KERAJAAN DAN KOMUNITI SEKITARNYA OLEH KEMENTERIAN KOMUNIKASI MALAYSIA - ZON UTARA (KKMM.400-11/17/132(1))

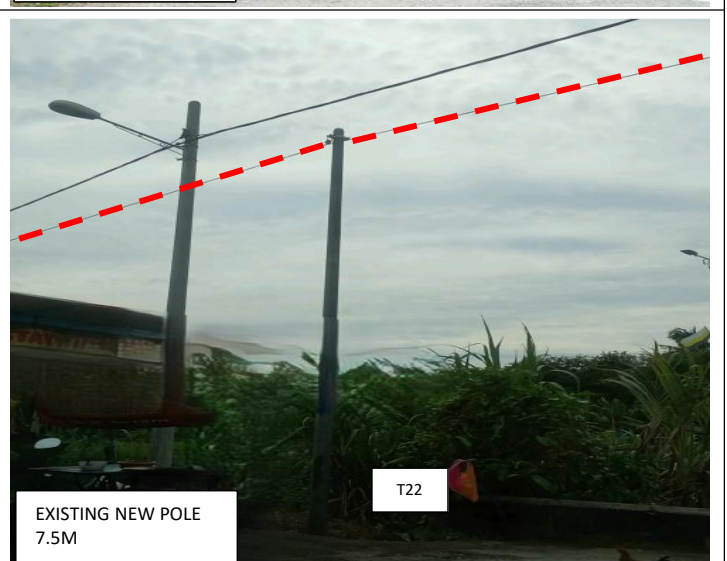
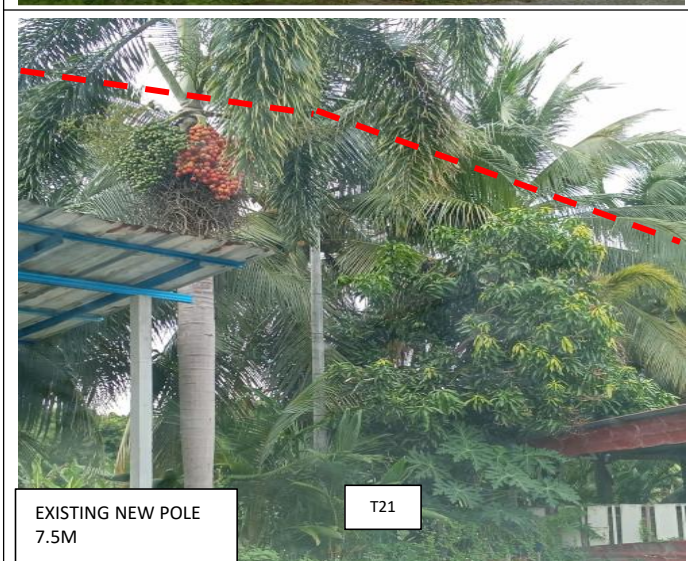
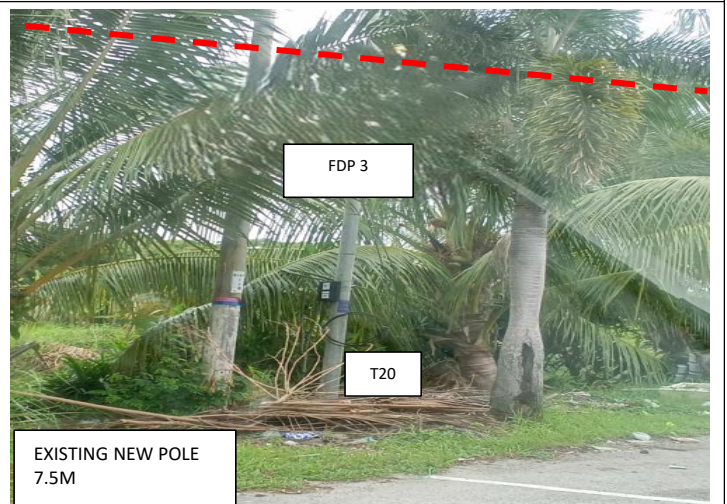
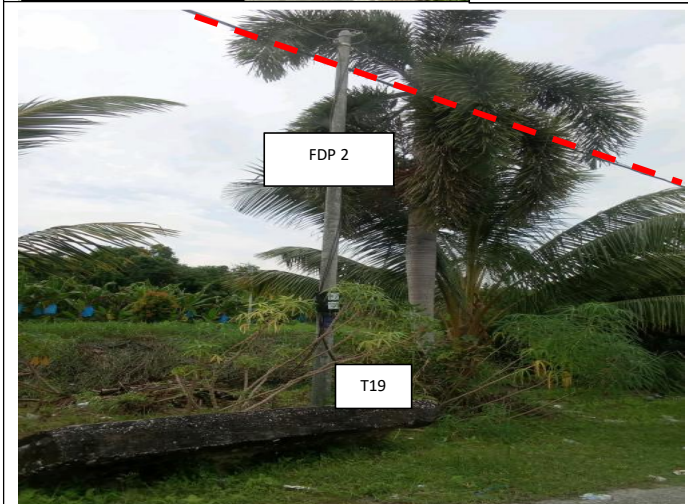
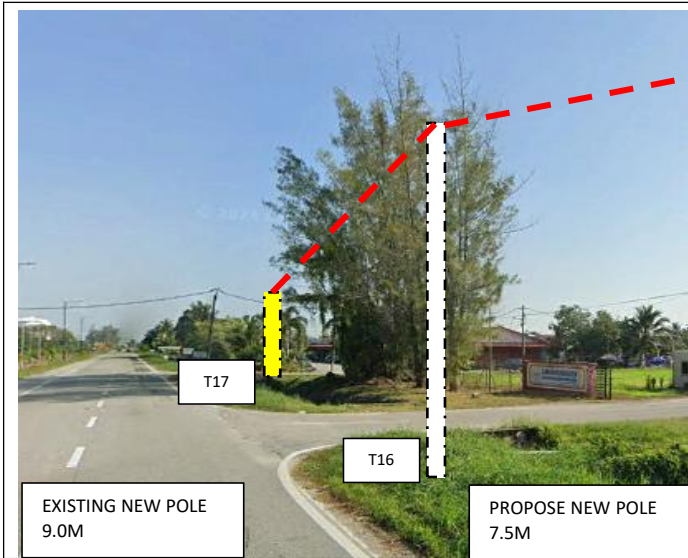


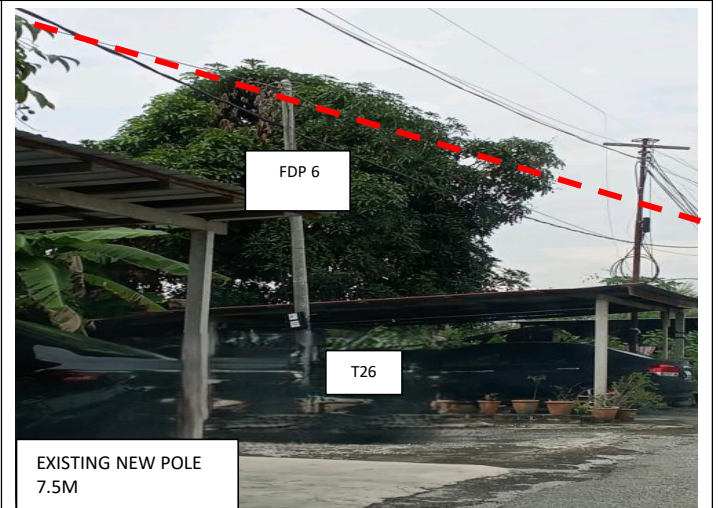
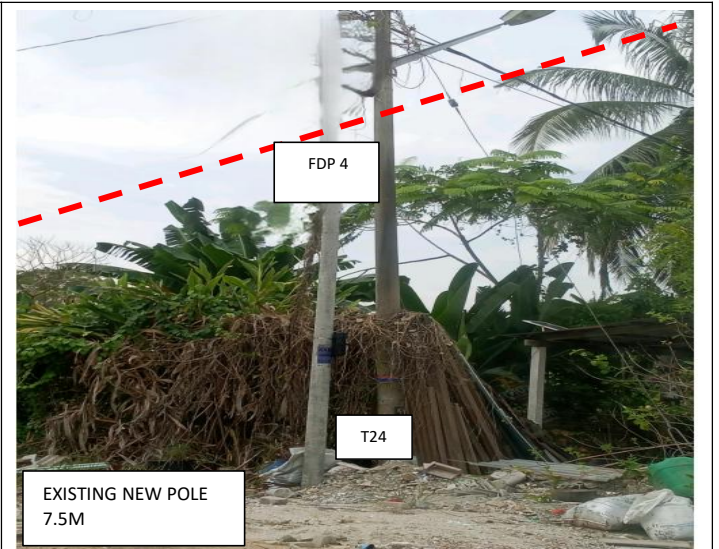
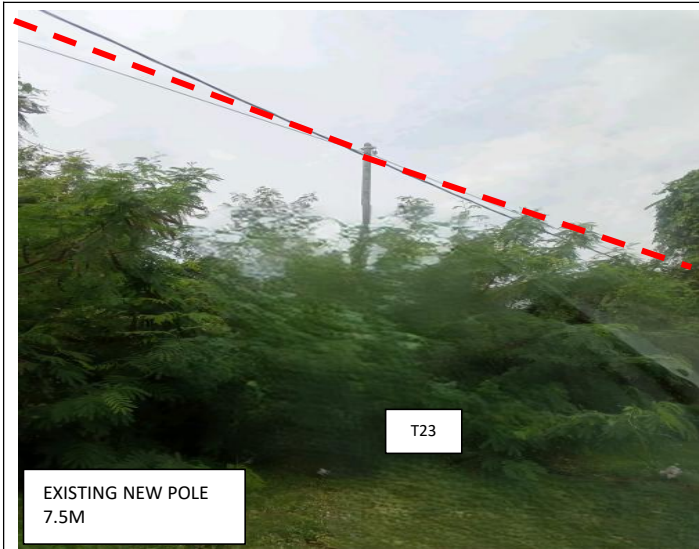
**Proposed New Pole Coordinate**

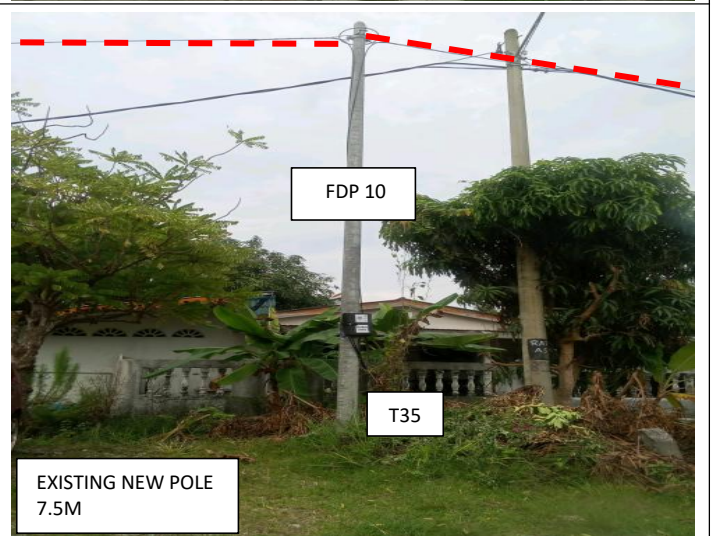
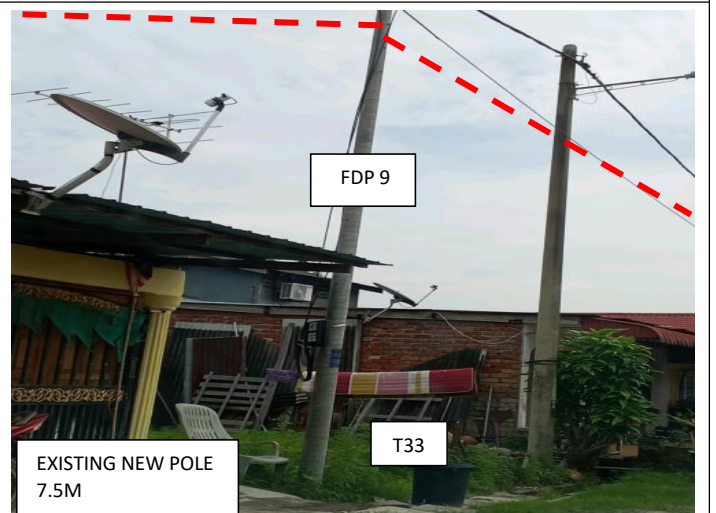
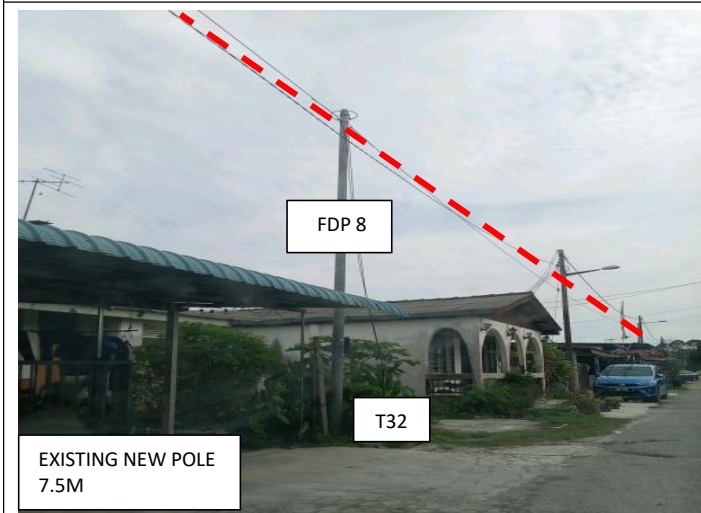
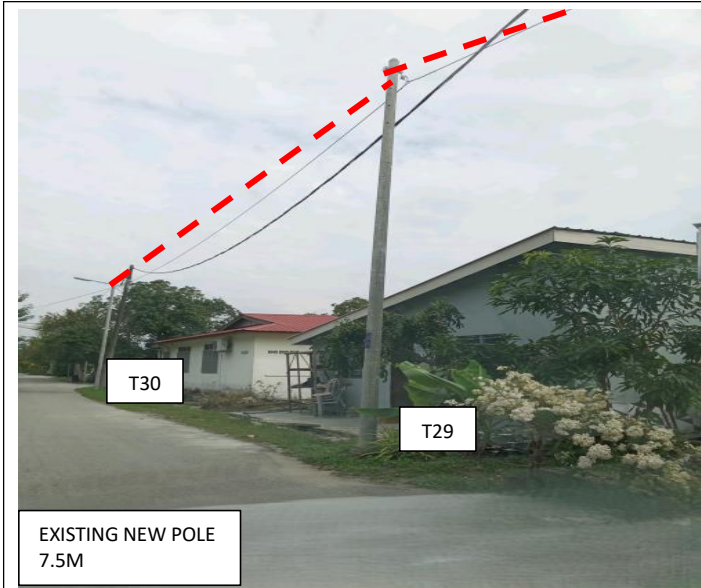
No.	Pole Number	Distance (m)	Latitude	Longitude	Local Authority
33	T033 (FDP 9)	50	3.980353	100.787232	MAJLIS PERBANDARAN TELUK INTAN
34	T034	20	3.979894	100.787256	MAJLIS PERBANDARAN TELUK INTAN
35	T035 (FDP 10)	43	3.979826	100.787425	MAJLIS PERBANDARAN TELUK INTAN
36	T036	30	3.979826	100.787799	MAJLIS PERBANDARAN TELUK INTAN
37	T037 (FDP 11)	50	3.979826	100.788065	MAJLIS PERBANDARAN TELUK INTAN
38	T038	40	3.979861	100.788520	MAJLIS PERBANDARAN TELUK INTAN
39	T039	23	3.979489	100.788539	MAJLIS PERBANDARAN TELUK INTAN
40	T040 (FDP 12)	26	3.979339	100.788403	MAJLIS PERBANDARAN TELUK INTAN
41	T041 (FDP 13)	45	3.979261	100.788178	MAJLIS PERBANDARAN TELUK INTAN
42	T042 (FDP 14)	44	3.979276	100.787765	MAJLIS PERBANDARAN TELUK INTAN
43	T043 (FDP 15)	12	3.979262	100.787381	MAJLIS PERBANDARAN TELUK INTAN
44	T044 (FDP 16)	45	3.979230	100.787269	MAJLIS PERBANDARAN TELUK INTAN
45	T045 (FDP 17)	42	3.978825	100.787266	MAJLIS PERBANDARAN TELUK INTAN
46	T046 (FDP 18)	42	3.978832	100.787646	MAJLIS PERBANDARAN TELUK INTAN
47	T047	34	3.981281	100.787551	MAJLIS PERBANDARAN TELUK INTAN
48	T048 (JOINT)	17	3.981262	100.787700	MAJLIS PERBANDARAN TELUK INTAN
49	T049 (FDP 19)	35	3.980954	100.787655	MAJLIS PERBANDARAN TELUK INTAN
50	T050	24	3.980743	100.787652	MAJLIS PERBANDARAN TELUK INTAN
51	T051 (FDP 20)	42	3.980361	100.787644	MAJLIS PERBANDARAN TELUK INTAN
52	T052	24	3.981233	100.787921	MAJLIS PERBANDARAN TELUK INTAN
53	T053	18	3.981252	100.788081	MAJLIS PERBANDARAN TELUK INTAN
54	T054 (FDP 21)	37	3.980913	100.788067	MAJLIS PERBANDARAN TELUK INTAN
55	T055 (FDP 22)	40	3.980546	100.788059	MAJLIS PERBANDARAN TELUK INTAN

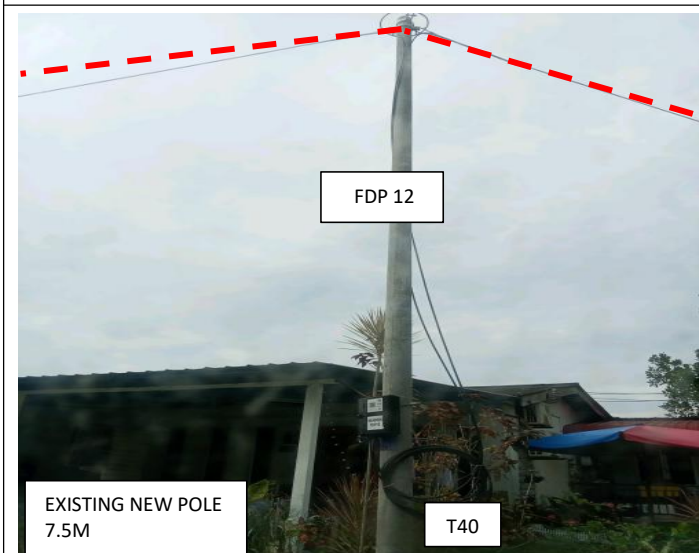
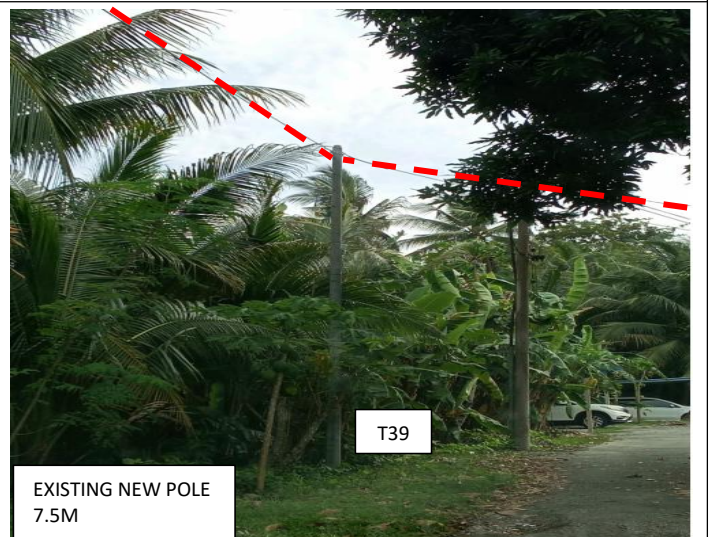
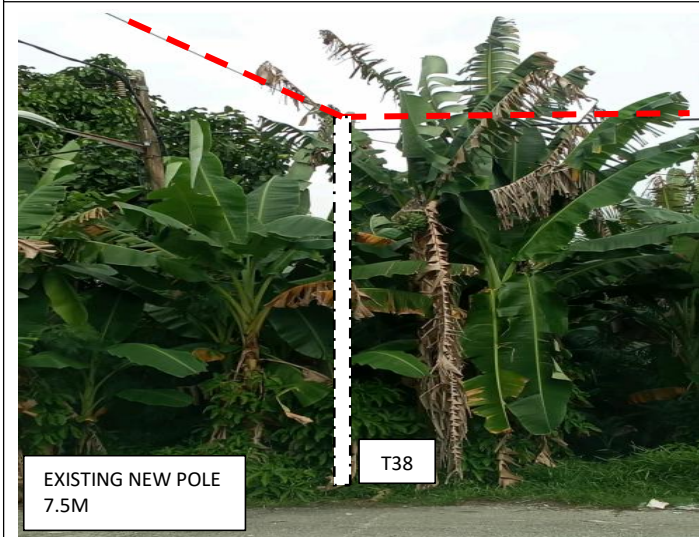
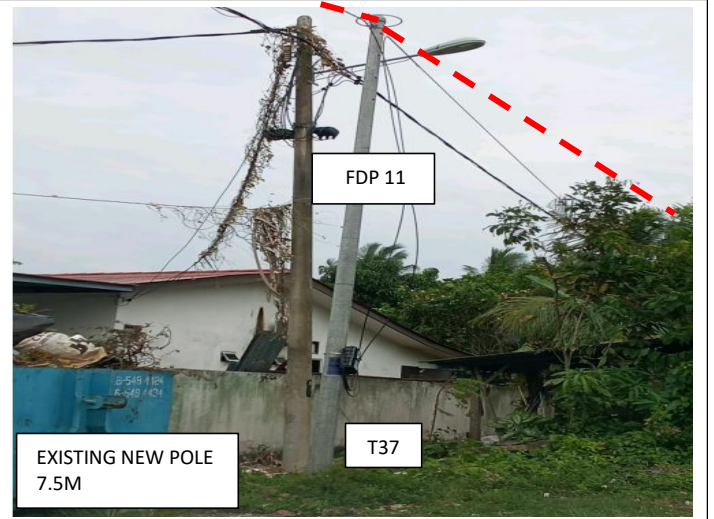
**6.0 SITE PHOTOS - PROPOSED NEW POLE**

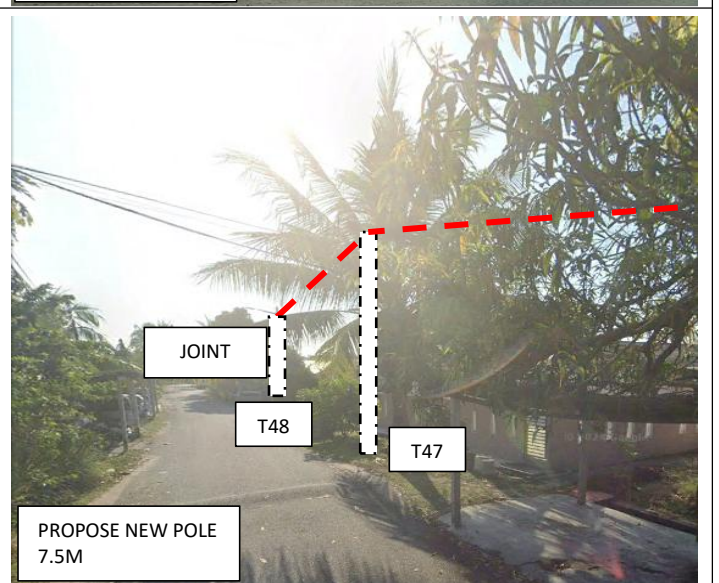
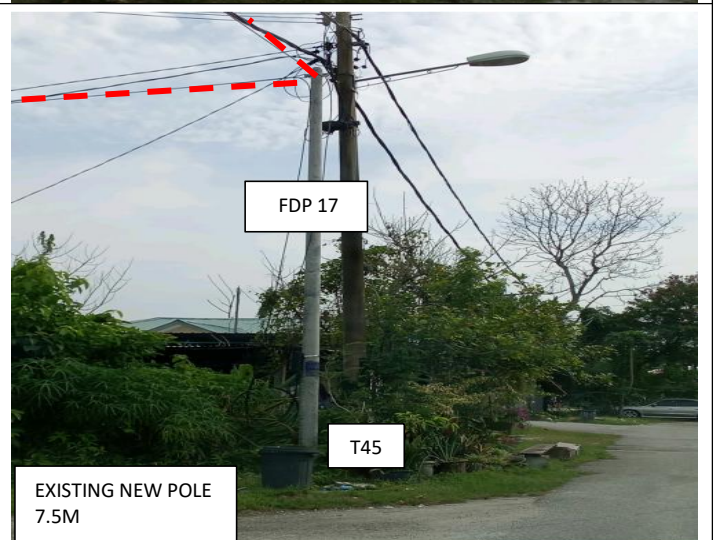
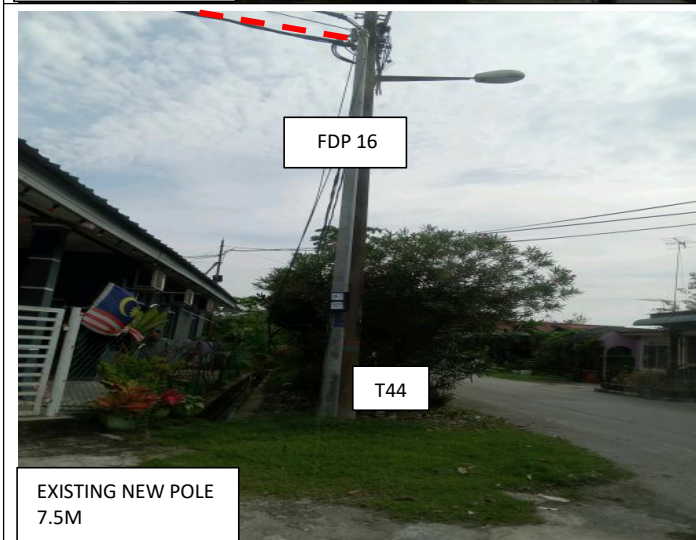


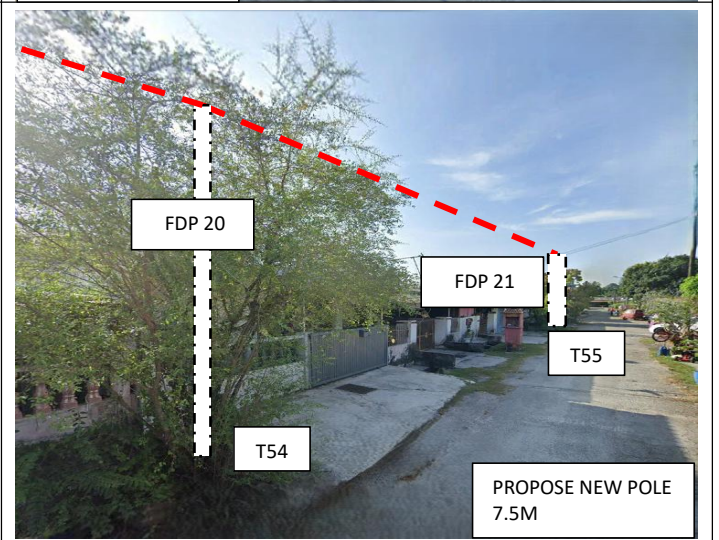
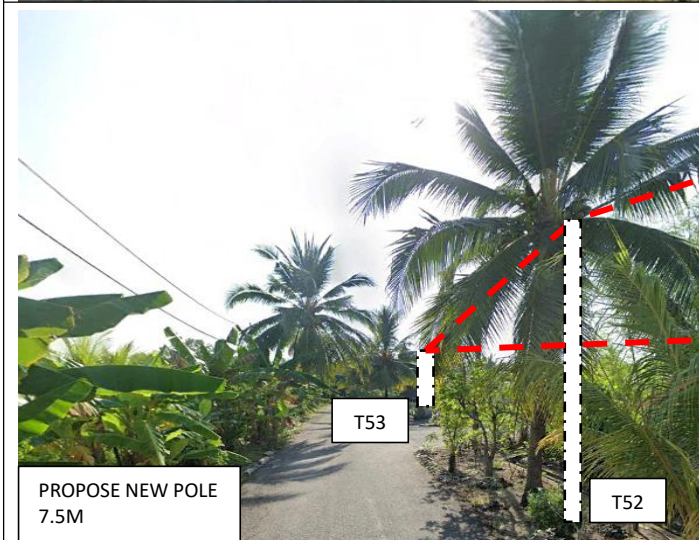
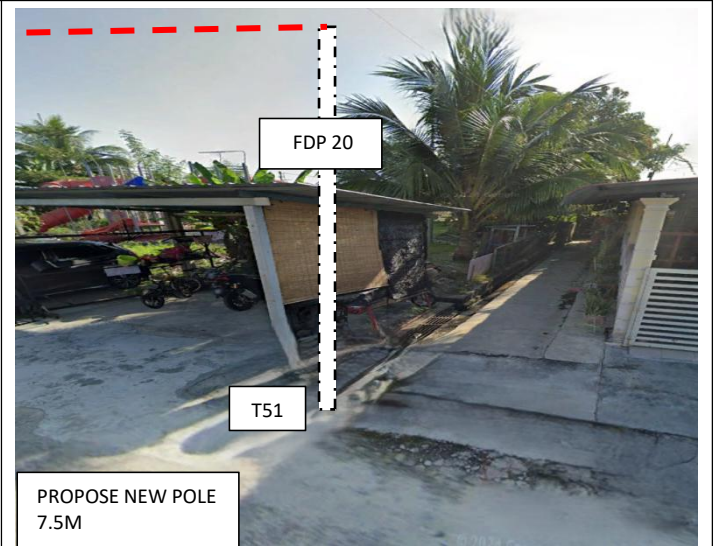
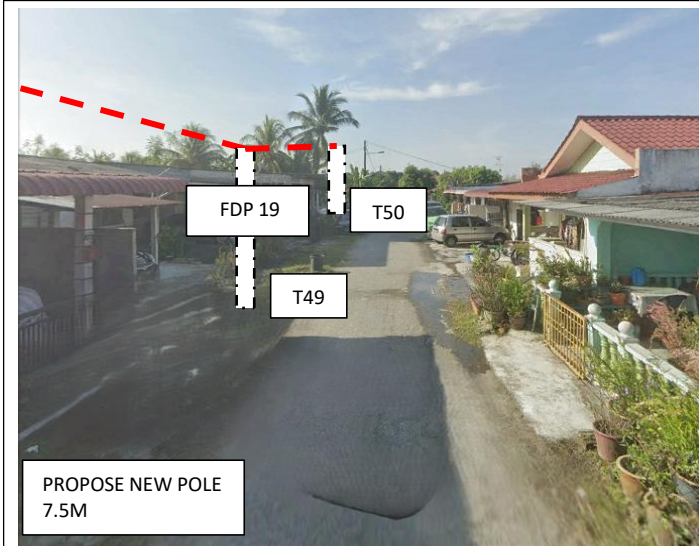














PROJEK PENYEDIAAN DAN PENYELENGGARAAN POINT OF PRESENT (POP) FASA 2: HAB INFRASTRUKTUR GENTIAN OPTIK BERHAMPIRAN DENGAN SEKOLAH, KAWASAN PERINDUSTRIAN, PREMIS KERAJAAN DAN KOMUNITI SEKITARNYA OLEH KEMENTERIAN KOMUNIKASI MALAYSIA - ZON UTARA (KKMM.400-11/17/132(1))

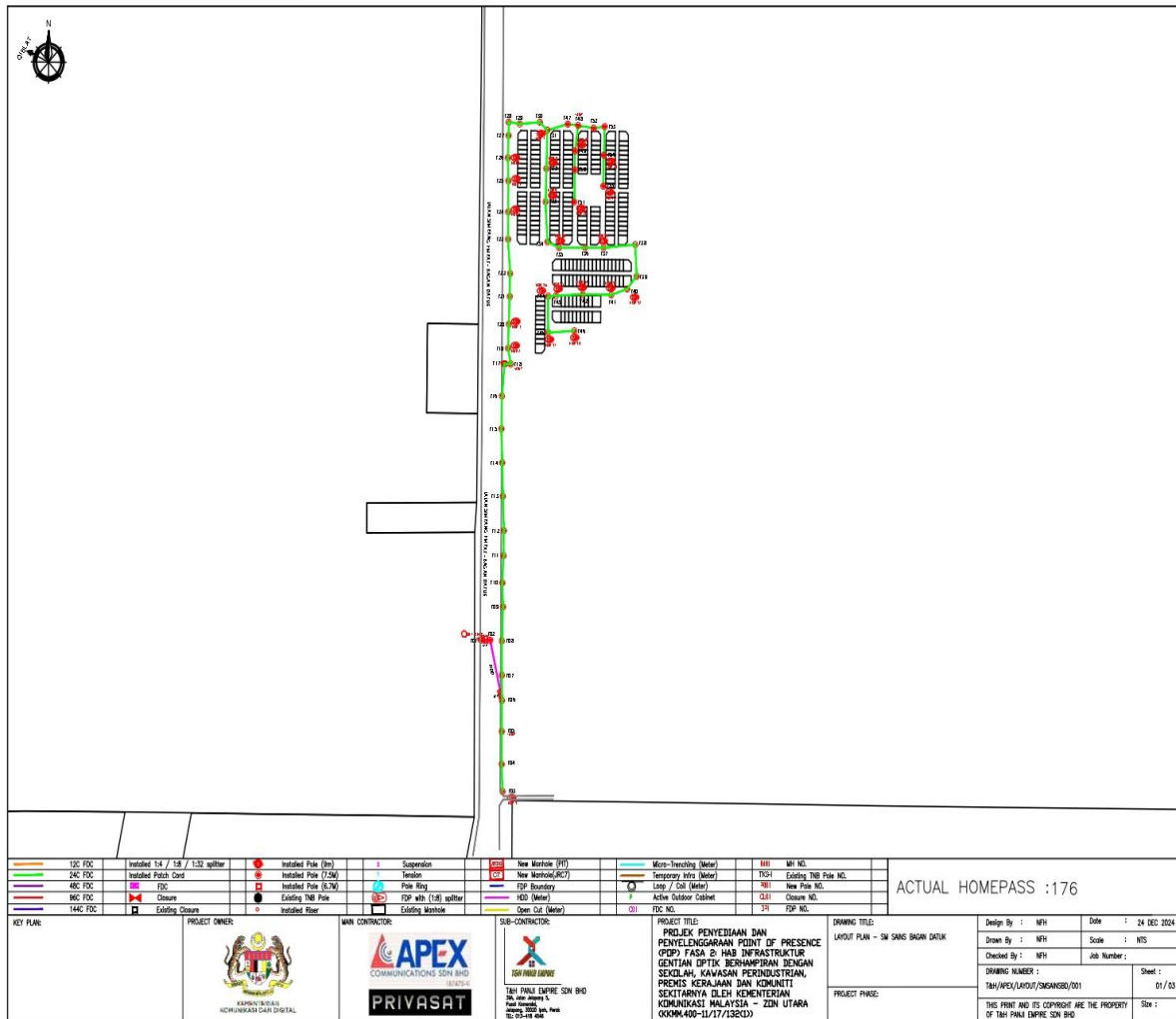


## 7.0 3<sup>rd</sup> PARTIES DEPENDENCIES

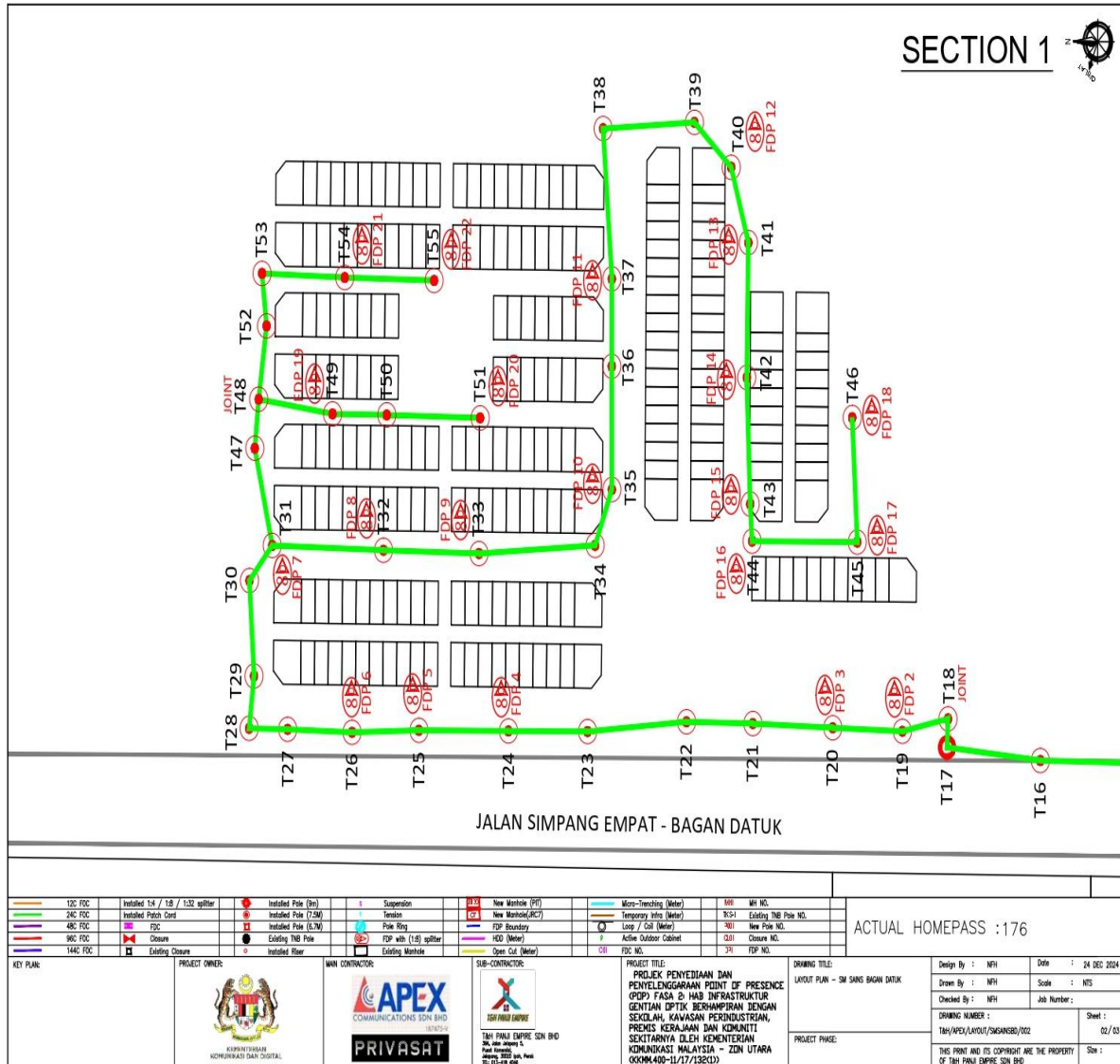
NO	LOCAL COUNCIL / AUTHORITY	REMARK
1	Majlis Perbandaran Teluk Intan	1600 M
2	JKR Teluk Intan	700 M

8.0 Drawing

Layout 1



Layout 2



Layout 3

