

# TECHNICAL PROPOSAL

	 <p>10 May 2024 13:55:30 4.54126N 101.15309E 185 Ipoh Perak PPU GIP Keramat</p>
<p>PPU GIP 2L5</p>	<p>PPU KERAMAT PULAI 1P5</p>
<p>LAT/LONG: 4.49461°N 101.14191°E</p>	<p>LAT/LONG: 4.54126°N 101.15309°</p>
<p>CIVIL INFRASTRUCTURE AND FIBRE OPTIC CABLING SYSTEM</p>	
<p>PROJECT NAME: INSTALL OF NEW FIBRE PPU PPU GIP 2L5 TO PPU KERAMAT PULAI1P5</p>	
<p>REGION: NORTHERN (GOPENG)</p>	
<p>SITE/LINK: PPU GIP 2L5 TO PPU KERAMAT PULAI1P5</p>	



## Table Of Content

- Section 1: Proposed Manhole Coordinates
- Section 2: OSP and ISP Routing Plan
- Section 3: OSP and ISP Snapshot/ Photo

**Section 1: PROPOSED MANHOLE COORDINATES**

Bil	Manhole	Lat	Long	Road	Method Of Statement
1	MH1	4.49472N	101.14190E	JALAN GOPENG	MT: 32
2	MH2	4.49375N	101.14005E	JALAN GOPENG	HDD: 231M
3	MH3	4.49322N	101.13914E	JALAN GOPENG	HDD: 121M
4	MH4	4.49148N	101.34002E	JALAN GOPENG	HDD: 223M
5	MH5	4.49041N	101.14166E	JALAN GOPENG	HDD: 232M
6	MH6	4.49012N	101.14343E	JALAN GOPENG	HDD: 200M
7	MH7	4.49117N	101.14535E	JALAN GOPENG	HDD: 248M
8	MH8	4.49217N	101.14711E	JALAN GOPENG	HDD: 229M
9	MH9	4.49288N	101.14850E	JALAN GOPENG	HDD: 178M
10	MH10	4.49346N	101.14947E	JALAN GOPENG	HDD: 124M
11	MH11	4.49381N	101.5011E	JALAN GOPENG	HDD: 84M
12	MH12	4.49512N	101.14997E	JALAN IPOH-KAMPAR	HDD: 77M
13	MH13	4.49677N	101.14920E	JALAN MEWAH 1	HDD: 202M
14	MH14	4.49808N	101.14863E	JALAN KAMPUNG TEKKAH	HDD:164M
15	MH15	4.49878N	101.14834E	JALAN KAMPUNG TEKKAH	HDD: 302M
16	MH16	4.50086N	101.14751E	JALAN KAMPUNG TEKKAH	HDD: 280M
17	MH17	4.80272N	101.14682E	JALAN IPOH-KAMPAR	HDD:226M
18	MH18	4.50493N	101.14595E	JALAN IPOH-KAMPAR	HDD: 260M
19	MH19	4.80650N	101.14511E	JALAN IPOH-KAMPAR	HDD:200M
20	MH20	4.50773N	101.14386E	JALAN IPOH-KAMPAR	HDD: 200M
21	MH21	4.50877N	101.14245E	JALAN KAMPUNG KEPAYANG	HDD: 215M
22	MH22	4.51002N	101.14120E	JALAN KAMPUNG KEPAYANG	HDD: 180M
23	MH23	4.51002N	101.14002E	JALAN KAMPUNG KEPAYANG	HDD: 250M
24	MH24	4.51353N	101.3901E	JALAN KAMPUNG KEPAYANG	HDD:206M
25	MH25	4.51538N	101.13799E	JALAN KAMPUNG KEPAYANG	HDD: 250M
26	MH26	4.51594N	101.13757E	JALAN KAMPUNG KEPAYANG	HDD: 169M
27	MH27	4.51539N	101.13800E	JALAN KAMPUNG KEPAYANG	HDD: 250
28	MH28	4.51649N	101.13695E	JALAN KAMPUNG KEPAYANG	HDD: 169M
29	MH29	4.51792N	101.13589E	JALAN KAMPUNG KEPAYANG	HDD: 207M
30	MH30	4.51907N	101.13530E	JALAN KAMPUNG KEPAYANG	HDD: 150M
31	MH31	4.52099N	101.13417E	JALAN KAMPUNG KEPAYANG	HDD: 247M
32	MH32	4.52260N	101.13331E	JALAN GOPENG	HDD: 150M
33	MH33	4.52386N	101.13262E	JALAN GOPENG	HDD: 159M
34	MH34	4.52571N	101.13170E	JALAN GOPENG	HDD: 228M
35	MH35	4.52751N	101.1309E	JALAN SULTAN NAZRIN SHAH	HDD: 220M
36	MH36	4.52960N	101.13094E	1C JALAN PBC 1	HDD: 272M

37	MH37	4.53031N	101.13177E	JALAN KAMPUNG KEPAYANG	HDD: 176M
38	MH38	4.53166N	101.1334E	JALAN KAMPUNG KEPAYANG	HDD: 242M
39	MH39	4.53298N	101.13505E	JALAN KAMPUNG TANJONG	HDD: 232M
40	MH40	4.53363N	101.13688E	JALAN KAMPUNG TANJONG	HDD: 236M
41	MH41	4.53360N	101.13742E	JALAN KAMPUNG TANJONG	HDD: 70M
42	MH42	4.53371N	101.13964E	JALAN KAMPUNG TANJONG	HDD: 250M
43	MH43	4.59405N	101.14153E	JALAN KAMPUNG TANJONG	HDD: 219M
44	MH44	4.53469N	101.14363E	JALAN KAMPUNG TANJONG	HDD: 241M
45	MH45	4.53552N	101.14604E	JALAN KAMPUNG TANJONG	HDD: 286M
46	MH46	4.5351N	101.14676E	JALAN KG KEPAYANG	HDD: 99M
47	MH47	4.53469N	101.14816E	JALAN KAMPUNG TANJONG	HDD: 170M
48	MH48	4.53537N	101.15078E	JALAN KAMPUNG TANJONG	HDD: 300M
49	MH49	4.53626N	101.15166E	JALAN KAMPUNG TANJONG	HDD:148M
50	MH50	4.53721N	101.15188E	JALAN KAMPUNG TANJONG	HDD: 108M
51	MH51	4.53988N	101.15165E	JALAN KAMPUNG KEPAYANG	HDD: 304M
52	MH52	4.54223N	101.15237E	JALAN KAMPUNG KEPAYANG	HDD: 284M

TOTAL 48C CABLE LENGTH 10500m  
TOTAL HDD LENGTH  
TOTAL MH : 52 MAINHOLE

**Section 2: OSP & ISP ROUTING PLAN (OVERALL ROUTING)**



Section 3: OSP AND ISP SNAPSHOT/ PHOTO

MH 1



MH2



MH 3



MH 4



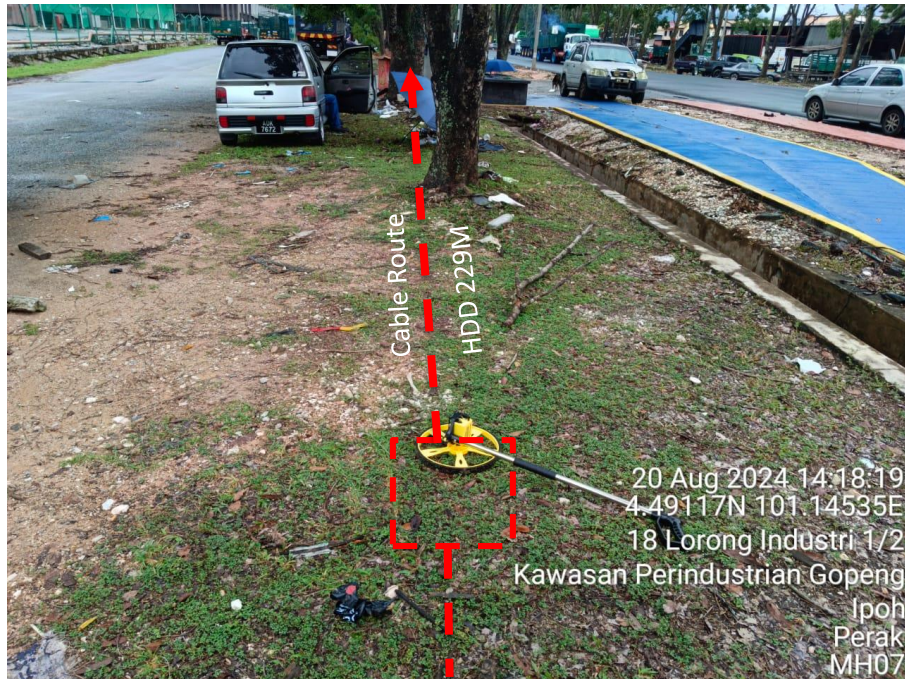
MH 5



MH 6



MH 7



MH 8



MH 9



MH 10



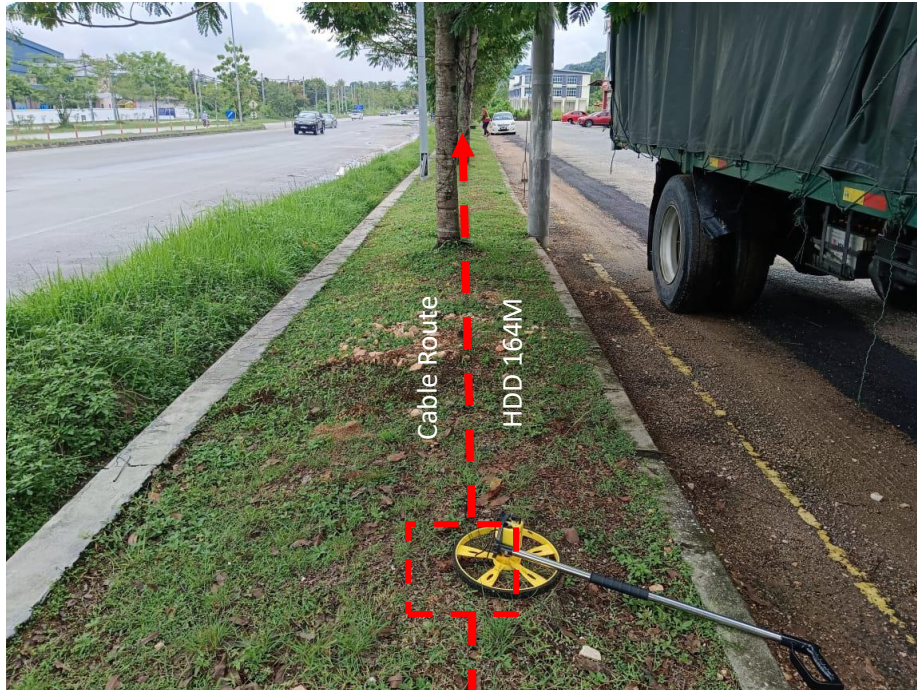
MH 11



MH 12



MH 13



MH 14



MH 15



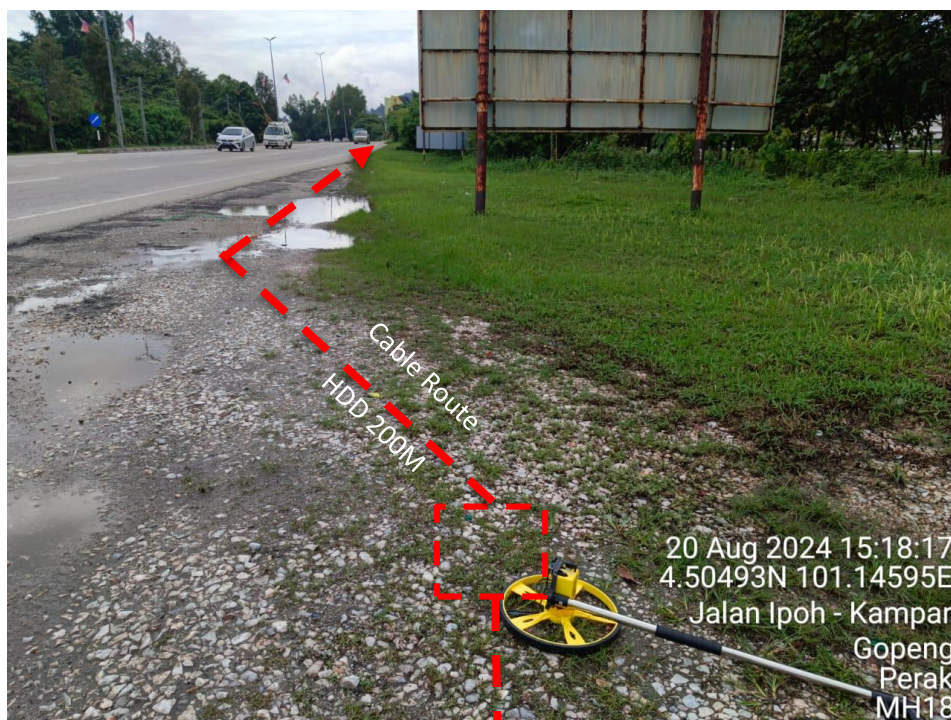
MH 16



MH 17



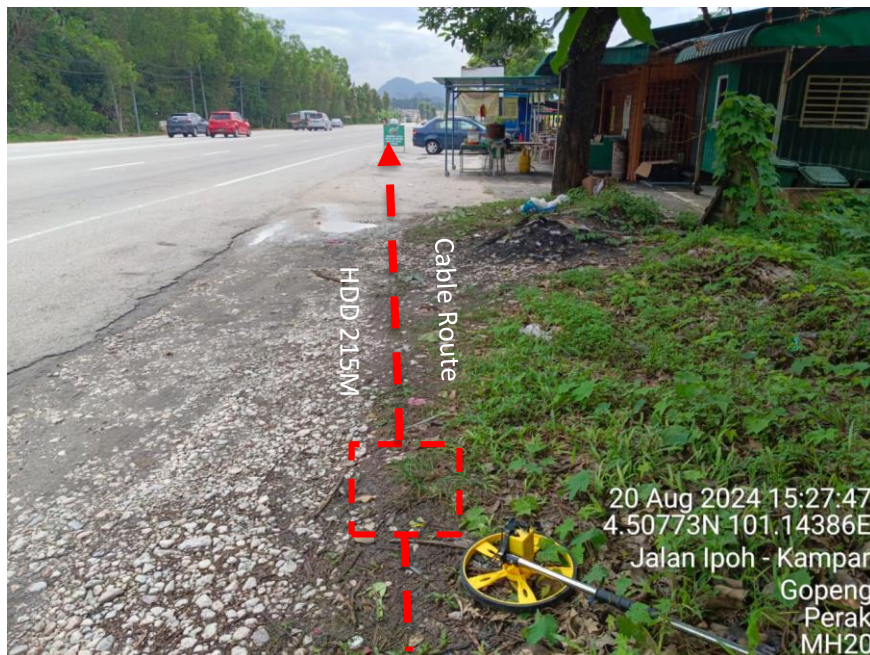
MH 18



MH 19



MH 20



MH 21



MH 24



MH 23



MH24



MH 25



MH26



MH27



MH 28



MH 29



MH 30



MH 31



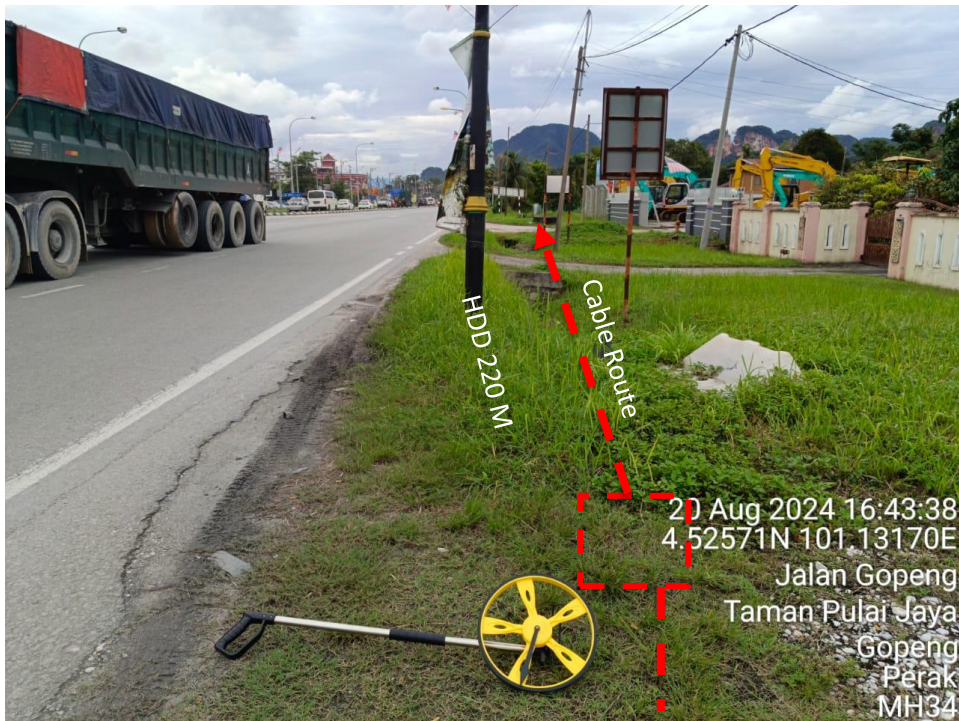
MH 32



MH 33



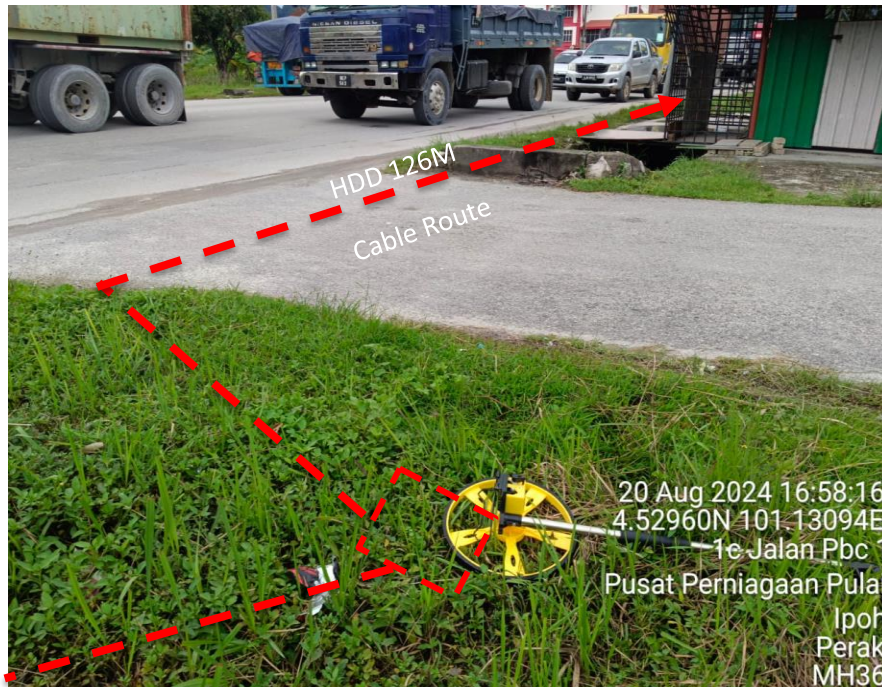
MH 34



MH 35



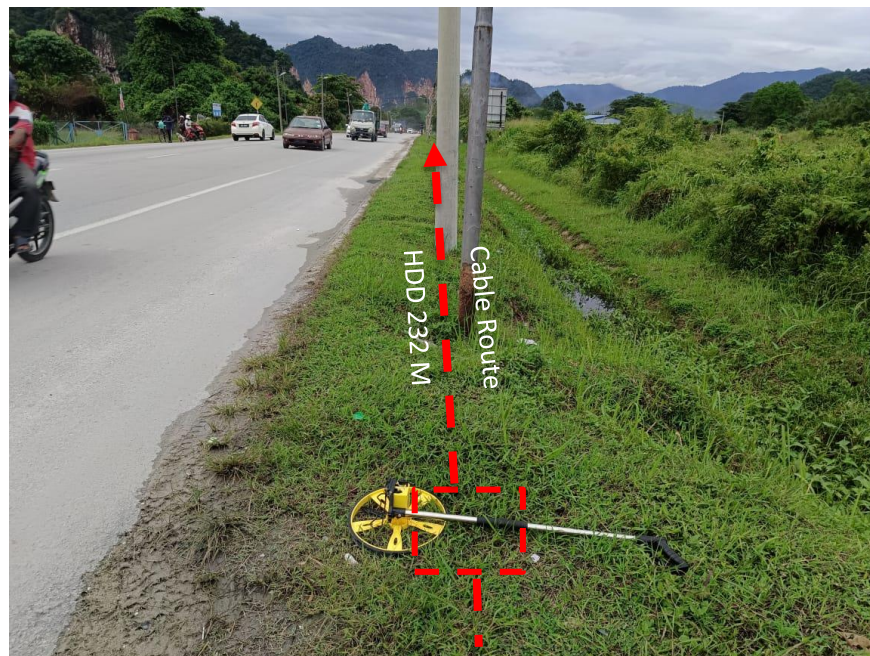
MH 38



MH 37



MH 38



MH 39



MH 40



MH 41



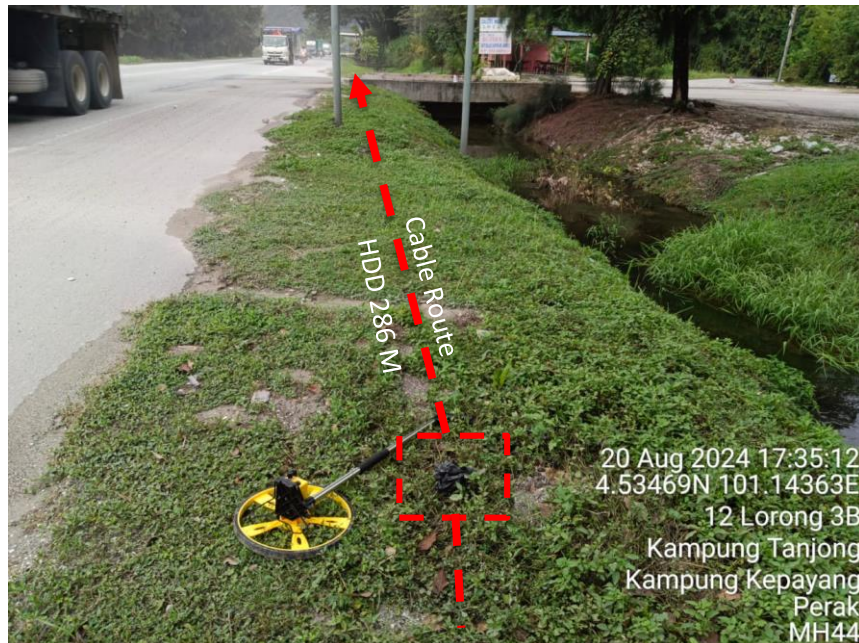
MH 42



MH43



MH 44



MH 45



MH 46



MH 47



MH 48



MH 49



MH 50



MH 51



MH 52





