

TECHNICAL PROPOSAL

POP2 ABA3023 SEKOLAH KEBANGSAAN SUNGAI BURONG (D-SIDE)

Company Name	:	SEGALA DELIMA (M) SDN BHD
Company Address	:	No. 8, Jalan Ampang Baru 6B, Pusat Perdagangan Baru, 31350 Ipoh, Perak
Prepared By	:	Mohamad Helmi
Date	:	06/01/2025



Point A



Point B

Starting Point

Site / Boundary Name	:	Sekolah Kebangsaan Sungai Burong
District	:	Kuala Kurau
Postcode	:	34350
State	:	Perak
GPS Coordinate	:	5.052744 100.438129
LRD	:	A

End Point

Site / Boundary Name	:	Sekolah Kebangsaan Sungai Burong
Address	:	Parit Telok Pial
District	:	Kuala Kurau
Postcode	:	34350
State	:	Perak
GPS Coordinate	:	5.069687 100.448317
LRD	:	B

1.0 WORK SUMMARY

NO	PROPOSED DISTANCE AND METHOD	UNIT	QUANTITY
1	Horizontal Directional Drilling (HDD)	m	0
2	Carriage Way Open Trench(CW)	m	0
3	Grass Verge Open Trenching (GV)	m	0
4	Micro Trenching (MT)	m	0
Total			0

NO	OTHER INFORMATION	UNIT	QUANTITY
1	Installation of Short Span ADSS Fiber Cables	m	2358
2	Install New Pole	ea	64
3	Install New JRC7 Manhole	ea	0
4	Install GI Riser 100mm	ea	0
5	Install Fiber Distribution Point and Closure (Splicing, Termination and Testing)	ea	13
6	Estimated Time Required for Completion	days	60

2.0 LOCAL AUTHORITY SUMMARY

Daerah Kerian

NO	ITEMS	Owner	Quantity	Distance (m)
1	HDD	JKR	-	-
		Majlis	-	-
		Estate / Private Land	-	-
2	New Pole	JKR	-	-
		Majlis	64	2358
		Estate / Private Land	-	-
Total Distance (m)				2358

3.0 SITE PLAN (KMZ)

3.1 Overview Site Area (Propose New Pole)



3.3 Site Plan - KMZ Routing (All Local Authority)



Red Colour - JKR

Road Blue Colour - Majlis Road

3.0 PROPOSED NEW MANHOLE

Proposed New Manhole Coordinate					
No.	Manhole Number	Distance (m)	Latitude	Longitude	Local Authority
1	MH01	-	-	-	-
2	MH02	-	-	-	-

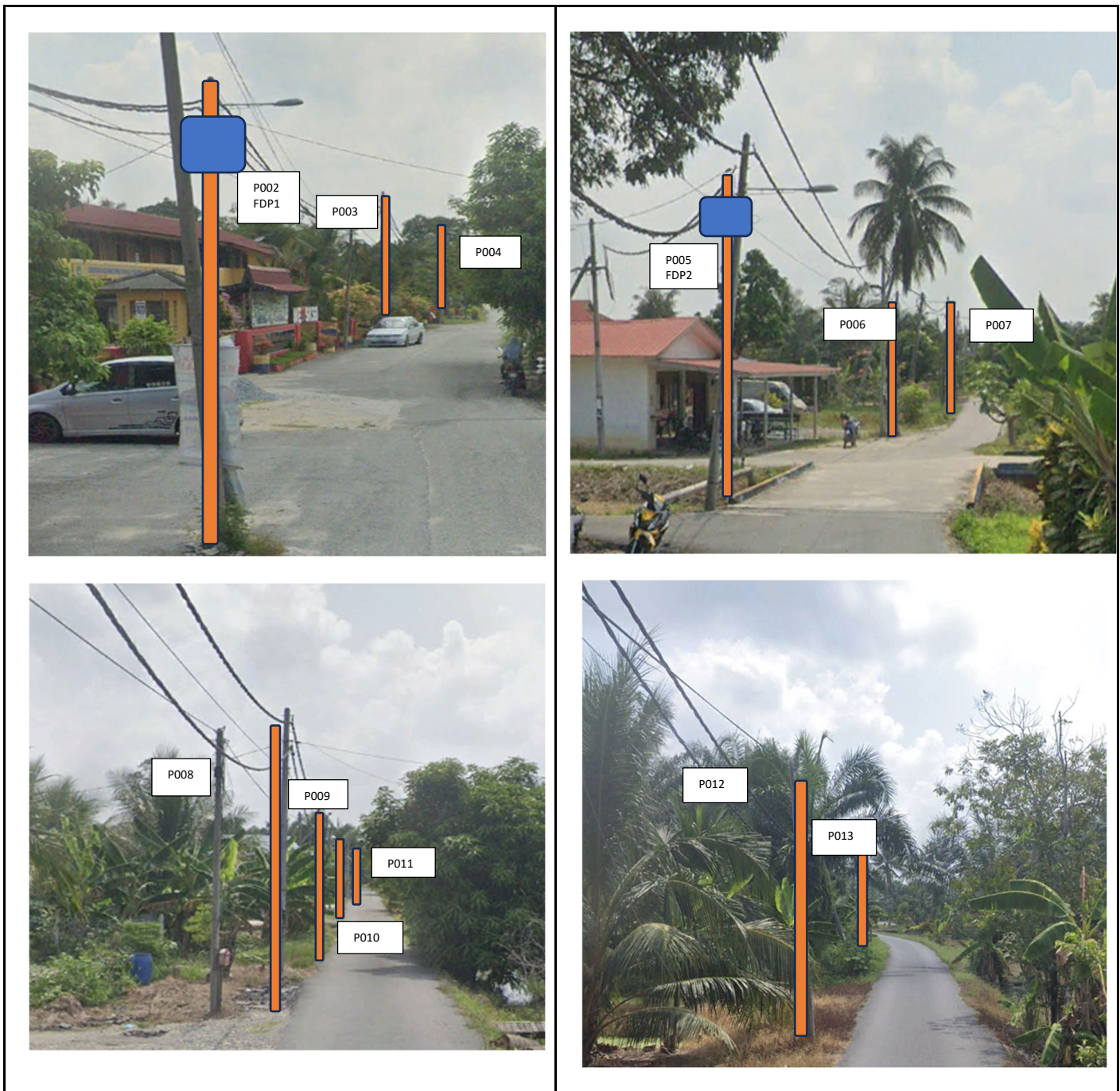
4.0 PROPOSED NEW POLE

Proposed New Pole Coordinate					
No.	Pole Number	Distance (m)	Latitude	Longitude	Local Authority
1	T001	35m	5.052754	100.438117	Majlis Daerah Keria
2	T002	35m	5.052959	100.438394	Majlis Daerah Keria
3	T003	35m	5.053158	100.438676	Majlis Daerah Keria
4	T004	35m	5.053360	100.438951	Majlis Daerah Keria
5	T005	35m	5.053571	100.439201	Majlis Daerah Keria
6	T006	35m	5.053749	100.439456	Majlis Daerah Keria
7	T007	35m	5.053932	100.439736	Majlis Daerah Keria
8	T008	35m	5.054123	100.439992	Majlis Daerah Keria
9	T009	35m	5.054318	100.440263	Majlis Daerah Keria
10	T010	35m	5.054512	100.440530	Majlis Daerah Keria
11	T011	35m	5.054703	100.440770	Majlis Daerah Keria
12	T012	35m	5.054900	100.441014	Majlis Daerah Keria
13	T013	35m	5.055123	100.441260	Majlis Daerah Keria
14	T014	35m	5.055366	100.441499	Majlis Daerah Keria
15	T015	35m	5.055637	100.441723	Majlis Daerah Keria
16	T016	35m	5.055893	100.441908	Majlis Daerah Keria
17	T017	35m	5.056152	100.442116	Majlis Daerah Kerian
18	T018	35m	5.056377	100.442308	Majlis Daerah Kerian
19	T019	35m	5.056634	100.442529	Majlis Daerah Kerian
20	T020	35m	5.056924	100.442728	Majlis Daerah Kerian
21	T021	35m	5.057193	100.442924	Majlis Daerah Kerian
22	T022	35m	5.057451	100.443122	Majlis Daerah Kerian
23	T023	35m	5.057732	100.443316	Majlis Daerah Kerian
24	T024	35m	5.058024	100.443542	Majlis Daerah Kerian
25	T025	35m	5.058277	100.443721	Majlis Daerah Kerian
26	TP26	35m	5.058528	100.443874	Majlis Daerah Kerian
27	T027	35m	5.058810	100.444063	Majlis Daerah Kerian
28	T028	35m	5.059087	100.444293	Majlis Daerah Kerian
29	T029	35m	5.059336	100.444490	Majlis Daerah Kerian
30	T030	35m	5.059574	100.444694	Majlis Daerah Kerian
31	T031	35m	5.059850	100.444892	Majlis Daerah Kerian
32	T032	35m	5.060139	100.445077	Majlis Daerah Kerian
33	T033	35m	5.060406	100.445252	Majlis Daerah Kerian

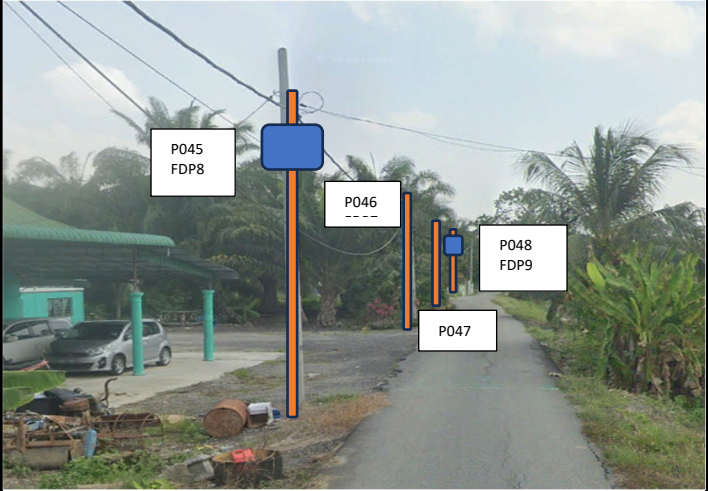
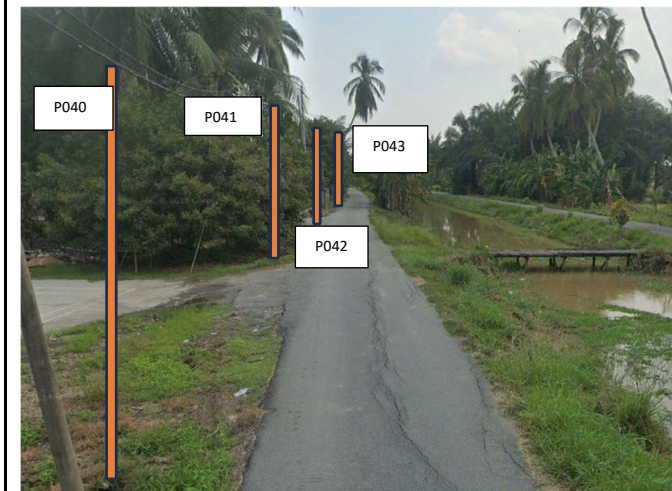
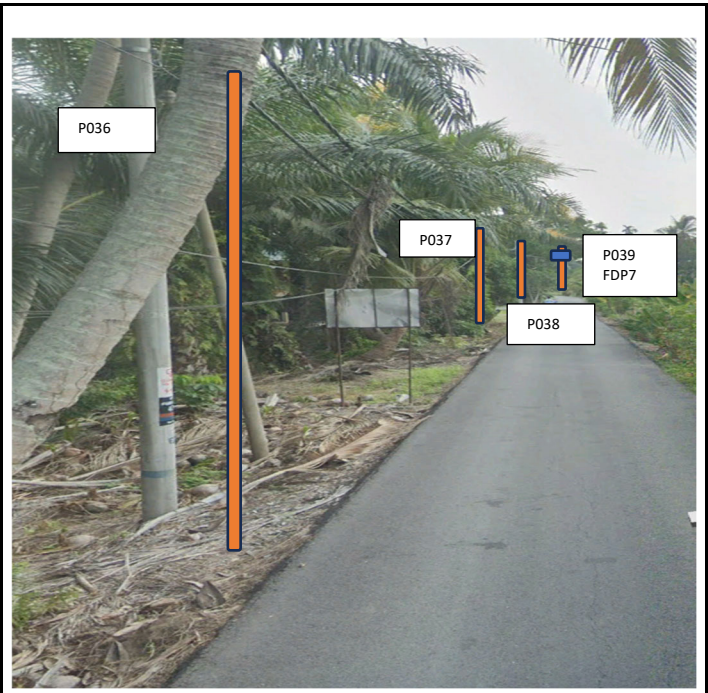
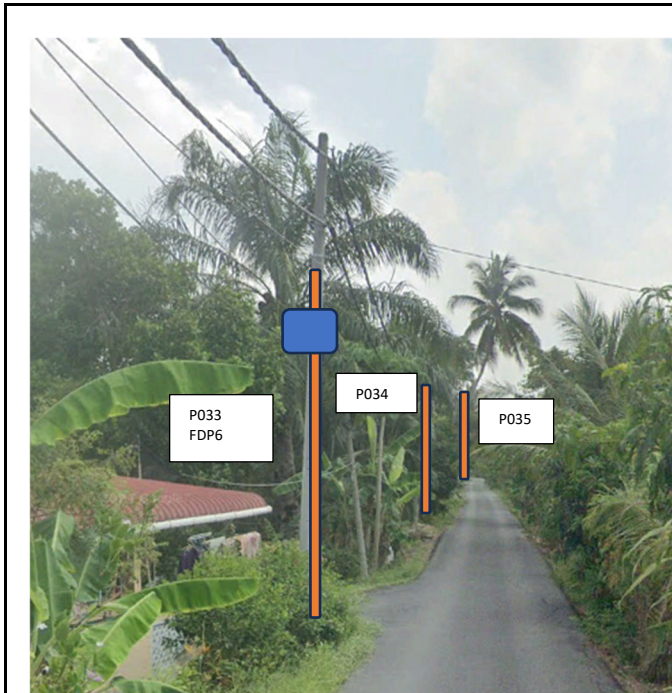
Proposed New Pole Coordinate					
No.	Pole Number	Distance (m)	Latitude	Longitude	Local Authority
34	T034	35m	5.060671	100.445456	Majlis Daerah Kerian
35	T035	35m	5.060922	100.445681	Majlis Daerah Kerian
36	T036	35m	5.061194	100.445863	Majlis Daerah Kerian
37	T037	35m	5.061456	100.446033	Majlis Daerah Kerian
38	T038	35m	5.061750	100.446229	Majlis Daerah Kerian
39	T039	35m	5.061994	100.446418	Majlis Daerah Kerian
40	T040	35m	5.062279	100.446593	Majlis Daerah Kerian
41	T041	35m	5.062556	100.446661	Majlis Daerah Kerian
42	T042	35m	5.062874	100.446728	Majlis Daerah Kerian
43	T043	35m	5.063137	100.446795	Majlis Daerah Kerian
44	T044	35m	5.063455	100.446848	Majlis Daerah Kerian
45	T045	35m	5.063747	100.446903	Majlis Daerah Kerian
46	T046	35m	5.064079	100.446981	Majlis Daerah Kerian
47	T047	35m	5.064376	100.447064	Majlis Daerah Kerian
48	T048	35m	5.064731	100.447141	Majlis Daerah Kerian
49	T049	35m	5.065052	100.447223	Majlis Daerah Kerian
50	T050	35m	5.065379	100.447291	Majlis Daerah Kerian
51	T051	35m	5.065690	100.447372	Majlis Daerah Kerian
52	T052	35m	5.066035	100.447442	Majlis Daerah Kerian
53	T053	35m	5.066371	100.447545	Majlis Daerah Kerian
54	T054	35m	5.066699	100.447609	Majlis Daerah Kerian
55	T055	35m	5.067064	100.447653	Majlis Daerah Kerian
56	T056	35m	5.067358	100.447740	Majlis Daerah Kerian
57	T057	35m	5.067687	100.447802	Majlis Daerah Kerian
58	T058	35m	5.068028	100.447904	Majlis Daerah Kerian
59	T059	35m	5.068365	100.447989	Majlis Daerah Kerian
60	T060	35m	5.068702	100.448080	Majlis Daerah Kerian
61	T061	35m	5.069006	100.448150	Majlis Daerah Kerian
62	T062	35m	5.069328	100.448216	Majlis Daerah Kerian
63	T063	20m	5.069687	100.448317	Majlis Daerah Kerian
64	T064	24m	5.054162	100.439763	Majlis Daerah Kerian

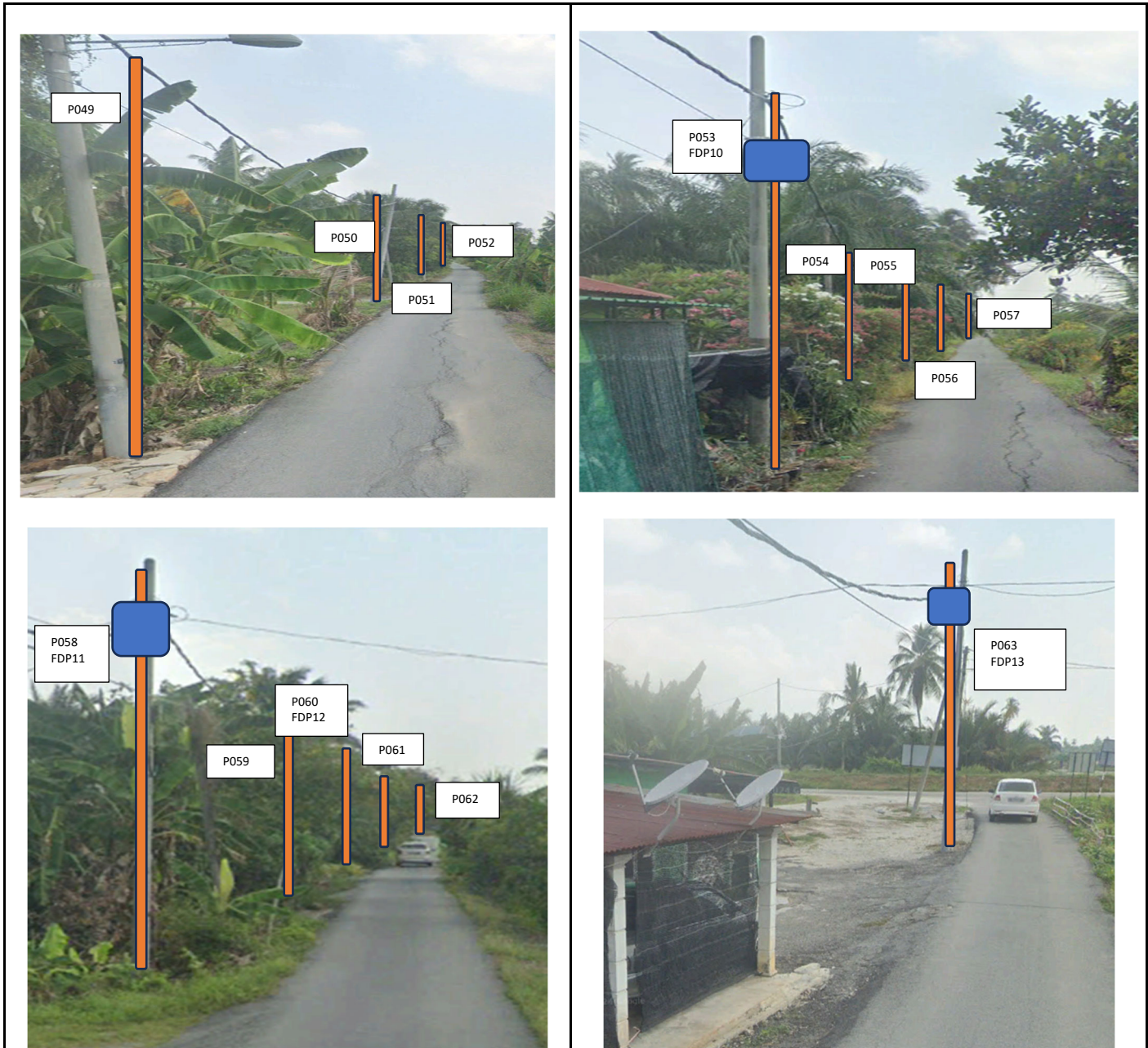
5.0 SITE PHOTOS - PROPOSED HDD AND NEW MANHOLE (N/A)

6.0 SITE PHOTOS

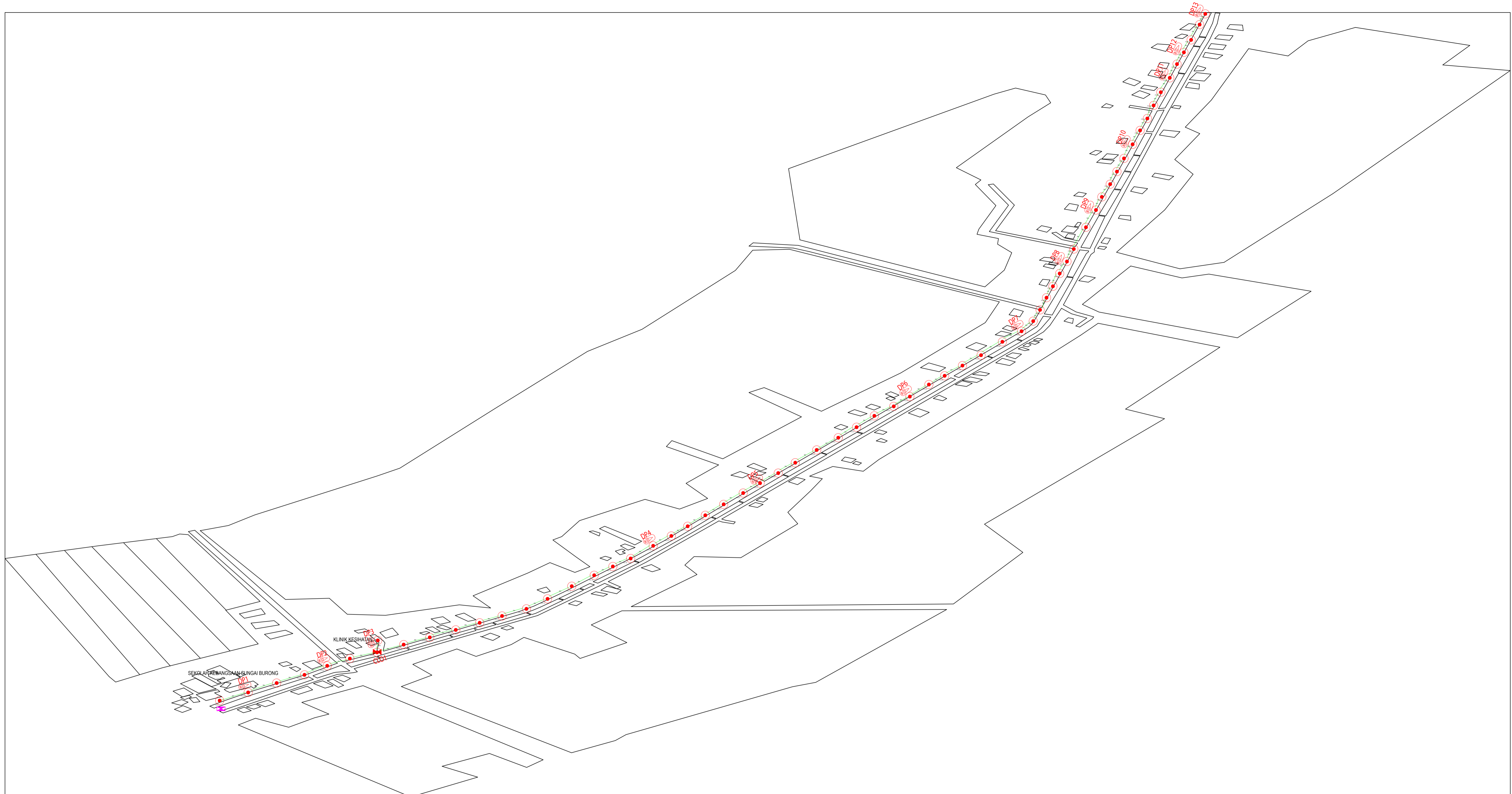








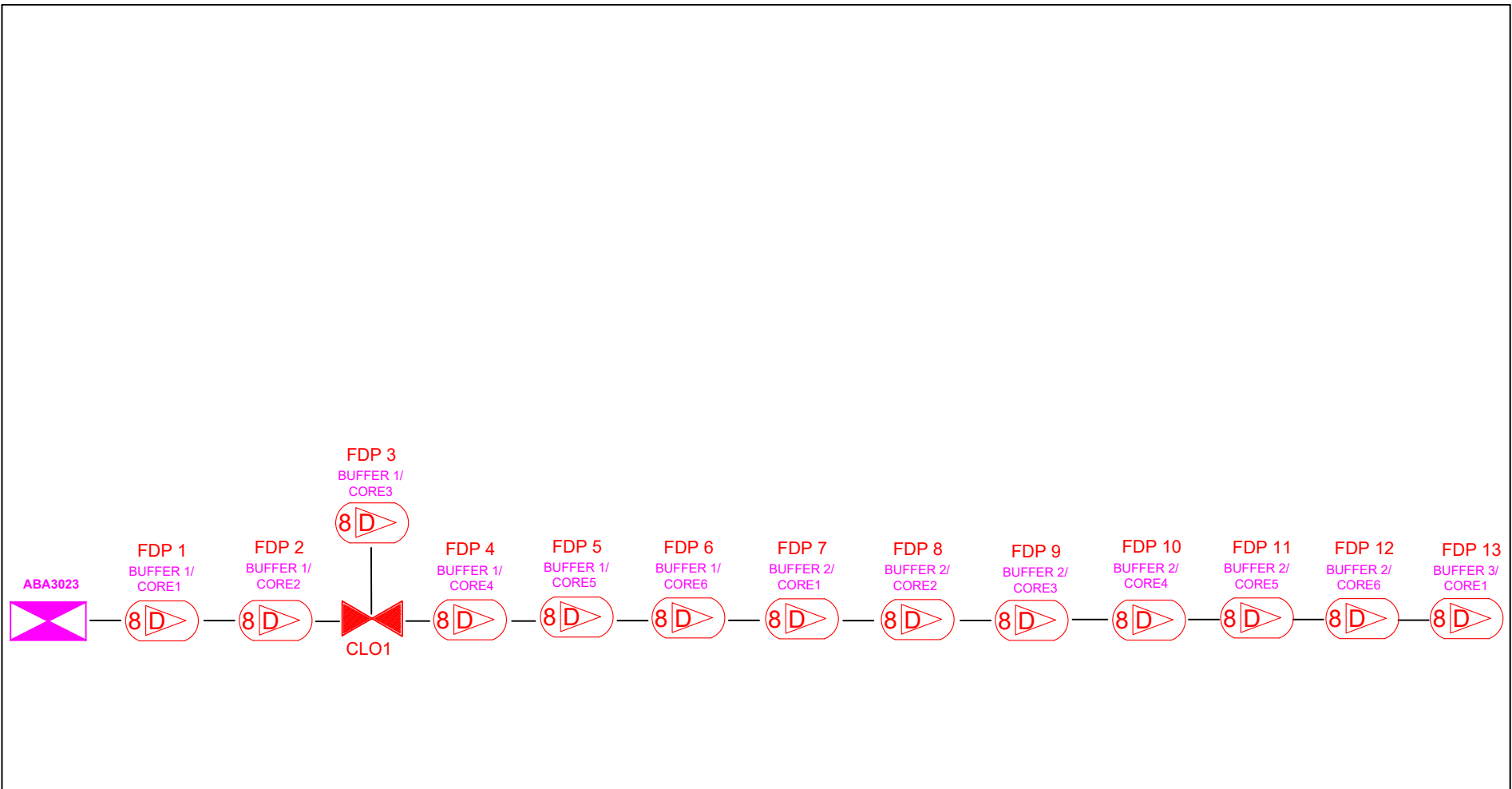
NO	LOCAL COUNCIL / AUTHORITY	REMARK
1	Majlis Daerah Kerian	2358m
2	JKR Daerah Kerian	-



12C FOC	Installed 1:4 / 1:8 / 1:32 splitter	Installed Pole (9m)	Suspension	JB30	New Manhole (PIT)	Micro-Trenching (Meter)	MH1	MH NO.
24C FOC	2358m Installed Patch Cord	Installed Pole (7.5M)	Tension	C7	New Manhole(JRC7)	Temporary Infra (Meter)	TKS-1	Existing TNB Pole NO.
48C FOC	FDC	Installed Pole (6.7M)	Pole Ring		FDP Boundary	Loop / Coil (Meter)	P001	New Pole NO.
96C FOC	Closure	Existing TNB Pole	FDP with (1:8) splitter	13	HDD (Meter)	#	CL01	Closure NO.
144C FOC	Existing Closure	Installed Riser	Existing Manhole		Open Cut (Meter)	C01	DP1	FDP NO.

ACTUAL HOMEPASS :

KEY PLAN:  KEMENTERIAN KOMUNIKASI DAN DIGITAL	PROJECT OWNER:  APEX COMMUNICATIONS SDN BHD 187475-V PRIVASAT	MAIN CONTRACTOR:  SEGALA DELIMA (M) SDN BHD NO8, JALAN AMPANG BARU 6B PUSAT PERDAGANGAN AMPANG BARU 31350, IPOH PERAK	SUB-CONTRACTOR:  SEGALA DELIMA (M) SDN BHD NO8, JALAN AMPANG BARU 6B PUSAT PERDAGANGAN AMPANG BARU 31350, IPOH PERAK	PROJECT TITLE: CONTRACT FOR SURVEY TECHNICAL PROPOSE AND WAYLEAVE & PERMITTING APPROVAL - POP 2 PROJECT	DRAWING TITLE: ABA3023 SEKOLAH KEBANGSAAN SUNGAI BURONG PROJECT PHASE: POP 2 PROJECT	Design By : HELMI Drawn By : HELMI Checked By : DRAWING NUMBER : Date : 06-JAN-25 Scale : 1 : 5000 Job Number : Sheet : 1 / 1 Size : A1
--	---	---	--	--	--	---



	12C FOC	Installed 1:4 / 1:8 / 1:32 splitter		Installed Pole (9m)		Suspension		New Manhole (PIT)		Micro-Trenching (Meter)		MH NO.
	24C FOC	Installed Patch Cord		Installed Pole (7.5M)		Tension		New Manhole (RC7)		Temporary Infra (Meter)		Existing TNB Pole NO.
	48C FOC	FDC		Installed Pole (6.7M)		Pole Ring		FDP Boundary		Loop / Coil (Meter)		New Pole NO.
	96C FOC	Closure		Existing TNB Pole		FDP with (1:8) splitter		HDD (Meter)		Active Outdoor Cabinet		Closure NO.
	144C FOC	Existing Closure		Installed Riser		Existing Manhole		Open Cut (Meter)		FDC NO.		FDP NO.

ACTUAL HOMEPASS :

KEY PLAN:	PROJECT OWNER: 	MAIN CONTRACTOR: 	SUB-CONTRACTOR: 	PROJECT TITLE: ABA3023 SEKOLAH KEBANGSAAN SUNGAI BURONG	DRAWING TITLE: CORE ASSIGNMENT DRAWING	Design By : HELM Date : 06-09-2023
					PROJECT PHASE: POP 2	Scale : 1 : 5000
						Job Number :
						Sheet : 1 / 1
						Size : A1