

## TECHNICAL PROPOSAL

### ABD4116-SEKOLAH JENIS KEBANGSAAN (TAMIL) LADANG CHANGKAT SALAK (D-SIDE)

Company Name	:	Aratimur Sdn. Bhd.
Company Address	:	A-08-13, 8 <sup>th</sup> Floor, Block A, Radia Office, Persiaran Singgahsana, 40150 Bukit Jelutong, Shah Alam, Selangor.
Prepared By	:	Muhammad Danieal Adikha Bin Zaidi
Date	:	15/01/2025



POINT A

POINT B

#### Starting Point

Site / Boundary Name	:	Sekolah Jenis Kebangsaan (Tamil) Ladang Changkat Salak
Address	:	31050 Salak Utara, Sungai Siput, Perak.
District	:	Kuala Kangsar
Postcode	:	31050
State	:	Perak
GPS Coordinate	:	4.853625, 101.004839
LRD	:	A

#### End Point

Site / Boundary Name	:	Ladang Changkat Salak
Address	:	31050 Salak Utara, Sungai Siput, Perak.
District	:	Kuala Kangsar
Postcode	:	31050
State	:	Perak
GPS Coordinate	:	4.854811, 101.001320
LRD	:	B

**Work Summary**

No	Proposed Distance and Method	Unit	Qty
1	Horizontal Directional Drilling (HDD)	m	<b>0</b>
2	Carriage Way Open trench (CW)	m	<b>0</b>
3	Grass Verge Open Trenching (GV)	m	<b>0</b>
4	Micro trenching (MT)	m	<b>0</b>
	Total		<b>0</b>

	Other Information	Unit	Qty
1	Proposed of Short Span ADSS Fibre Cables	m	<b>1655</b>
2	Proposed Pole	ea	<b>52</b>
3	Proposed Manhole	ea	<b>0</b>
4	Proposed GI Riser 50mm	ea	<b>1</b>
5	Proposed Fiber Distribution Point	ea	<b>16</b>
6	Proposed Joint Closure	ea	<b>7</b>
7	Estimated time required for completion	days	<b>30</b>

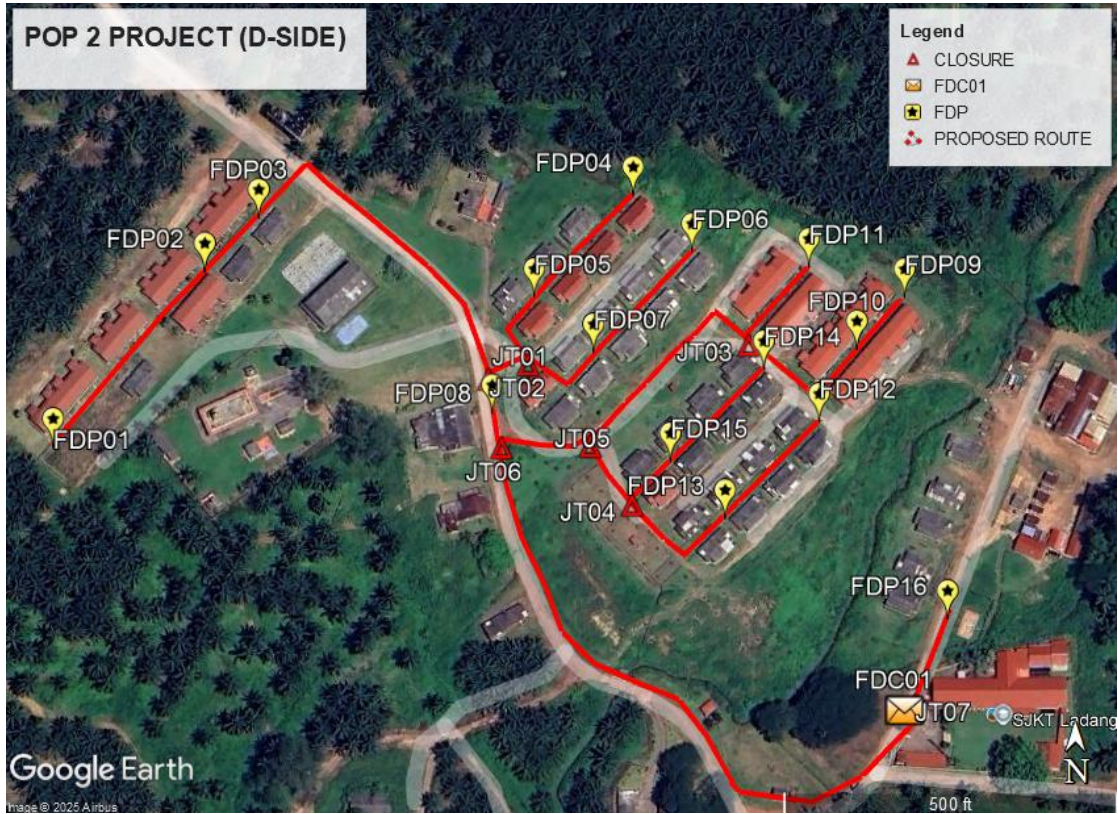
**Local Authority Summary**

1. Daerah Kuala Muda

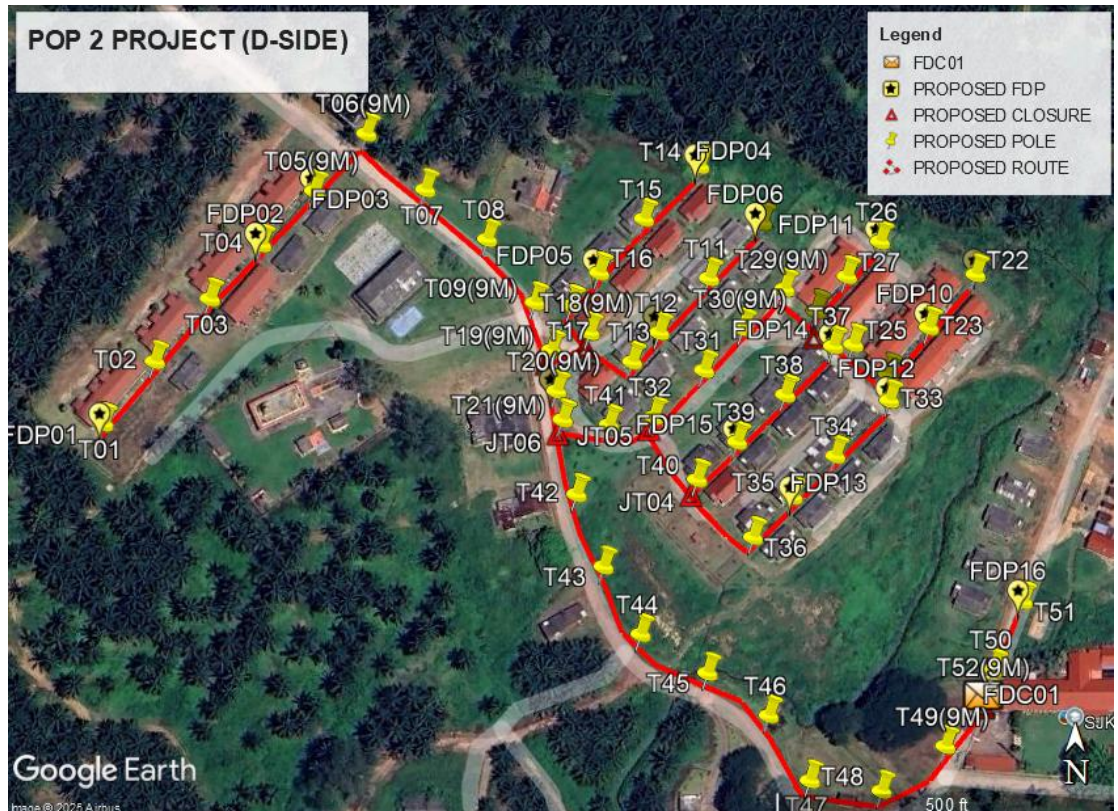
<b>Bil</b>	<b>Items</b>	<b>Owner</b>	<b>Quantity</b>	<b>Distance</b>
1	HDD	JKR	-	-
		Majlis	-	-
		Estate / Private Land	-	-
2	New Pole	JKR	-	-
		Majlis	-	-
		Estate / Private Land	52pcs	1655m
3	Existing TNB Pole	JKR	-	-
		Majlis	-	-
		Estate / Private Land	-	-
<b>Total</b>				<b>1655m</b>

**Site Plan – KMZ (Overview site area)**

**Proposed FDP & Closure**



**Proposed New Pole**



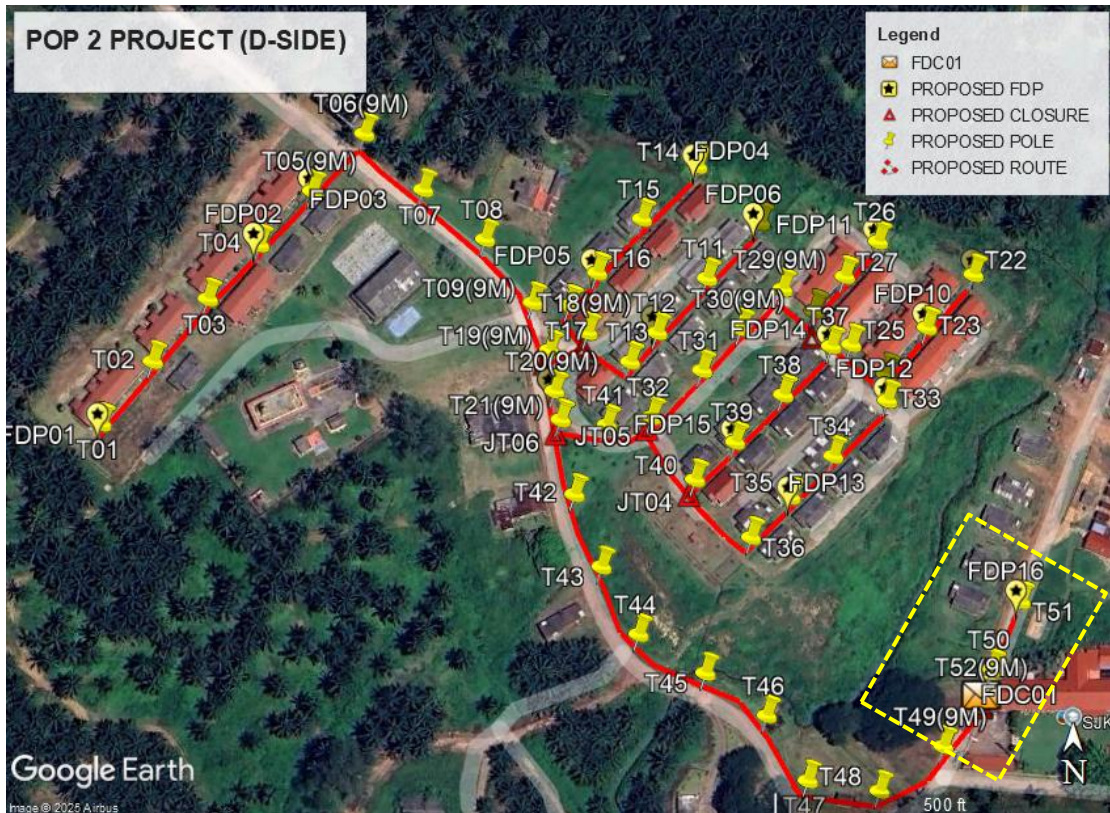
**Site Plan – KMZ Routing (All Local Authority)**



**Green Colour – Estate / Private Road**

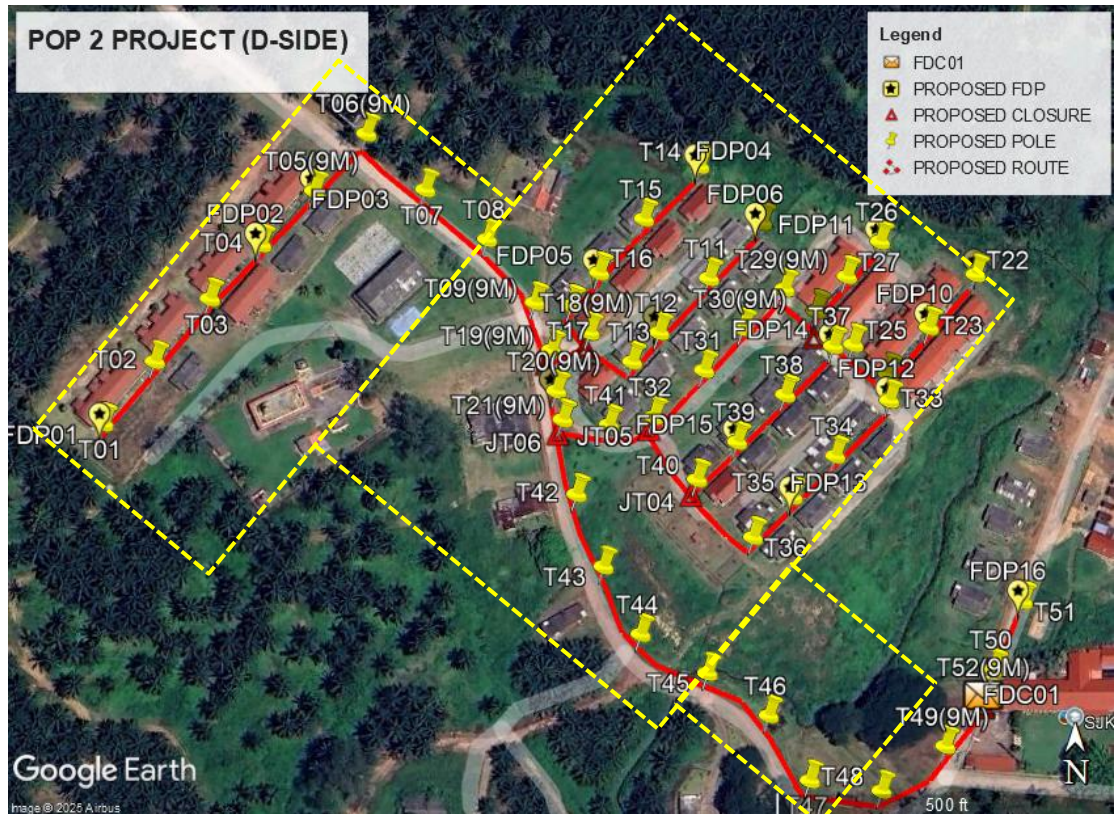
**Site Plan – KMZ Routing (All site area)**

**Route 1**

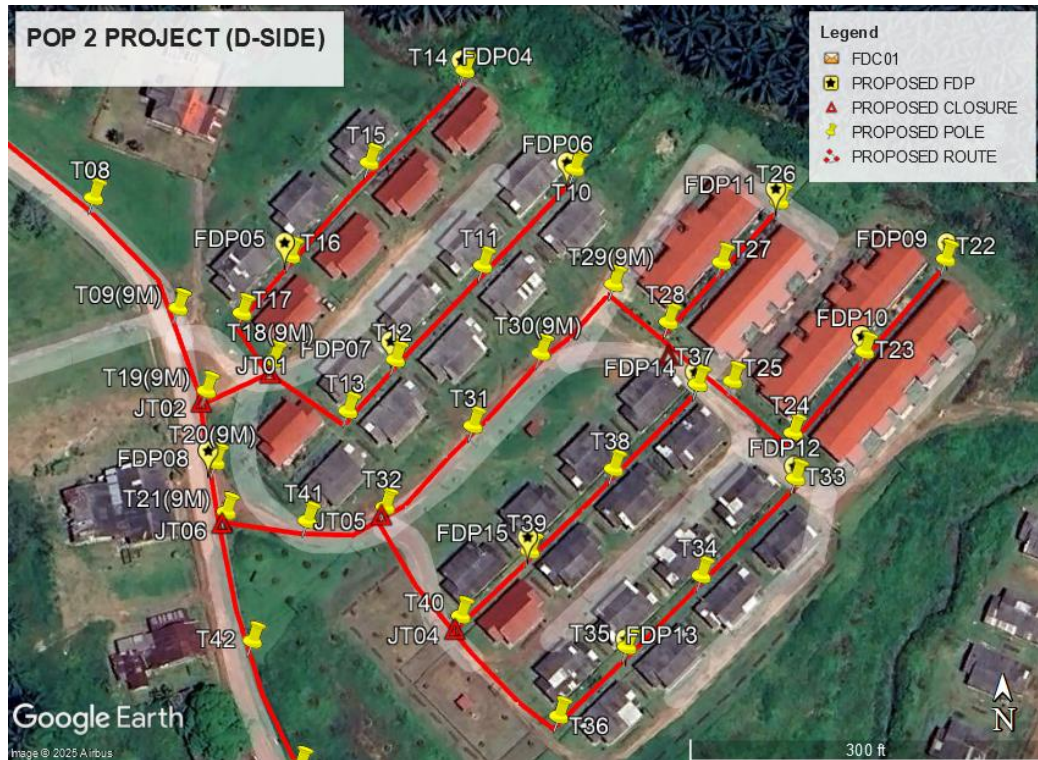


**Route 1.1**

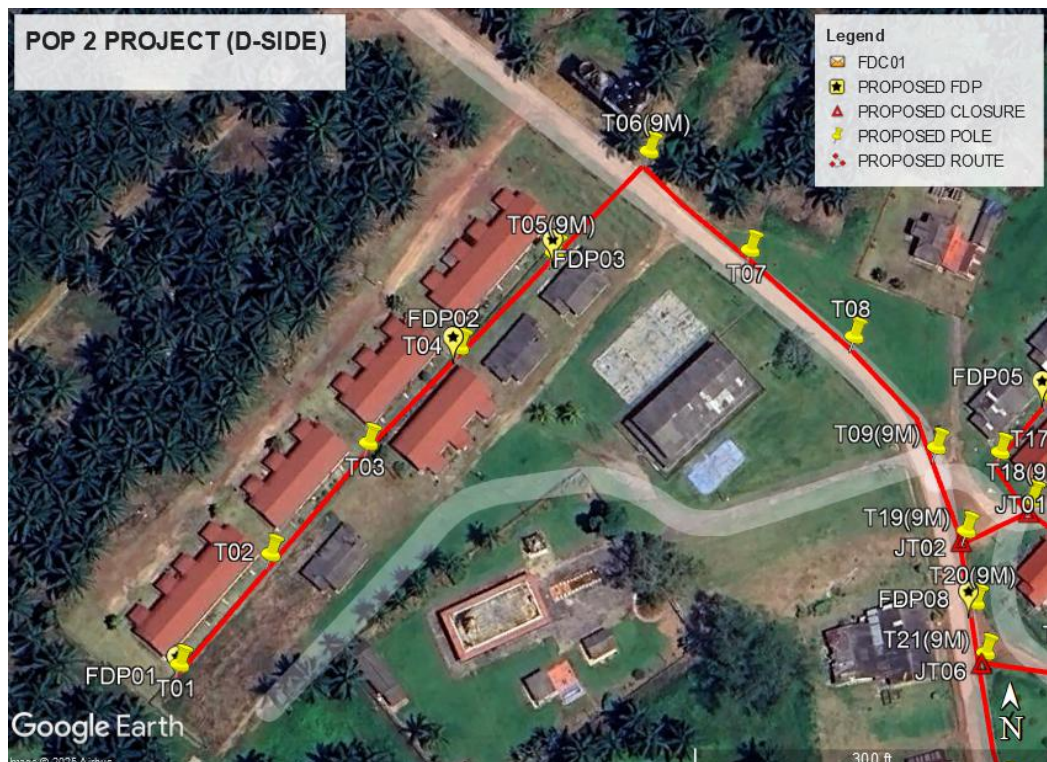
**Route 2**



**Route 2.1**

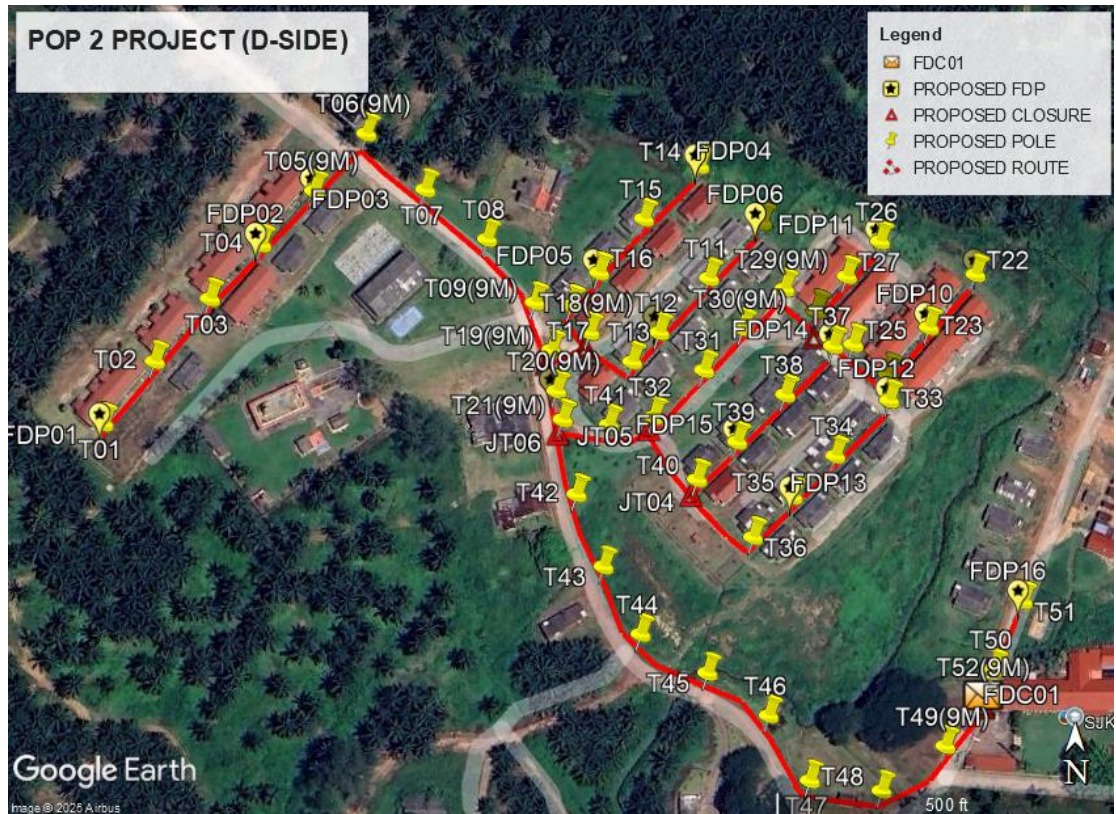


Route 2.2



Route 2.3

**Site Plan – KMZ Routing (Proposed New Pole)**



**Overall Pole (Proposed New)**

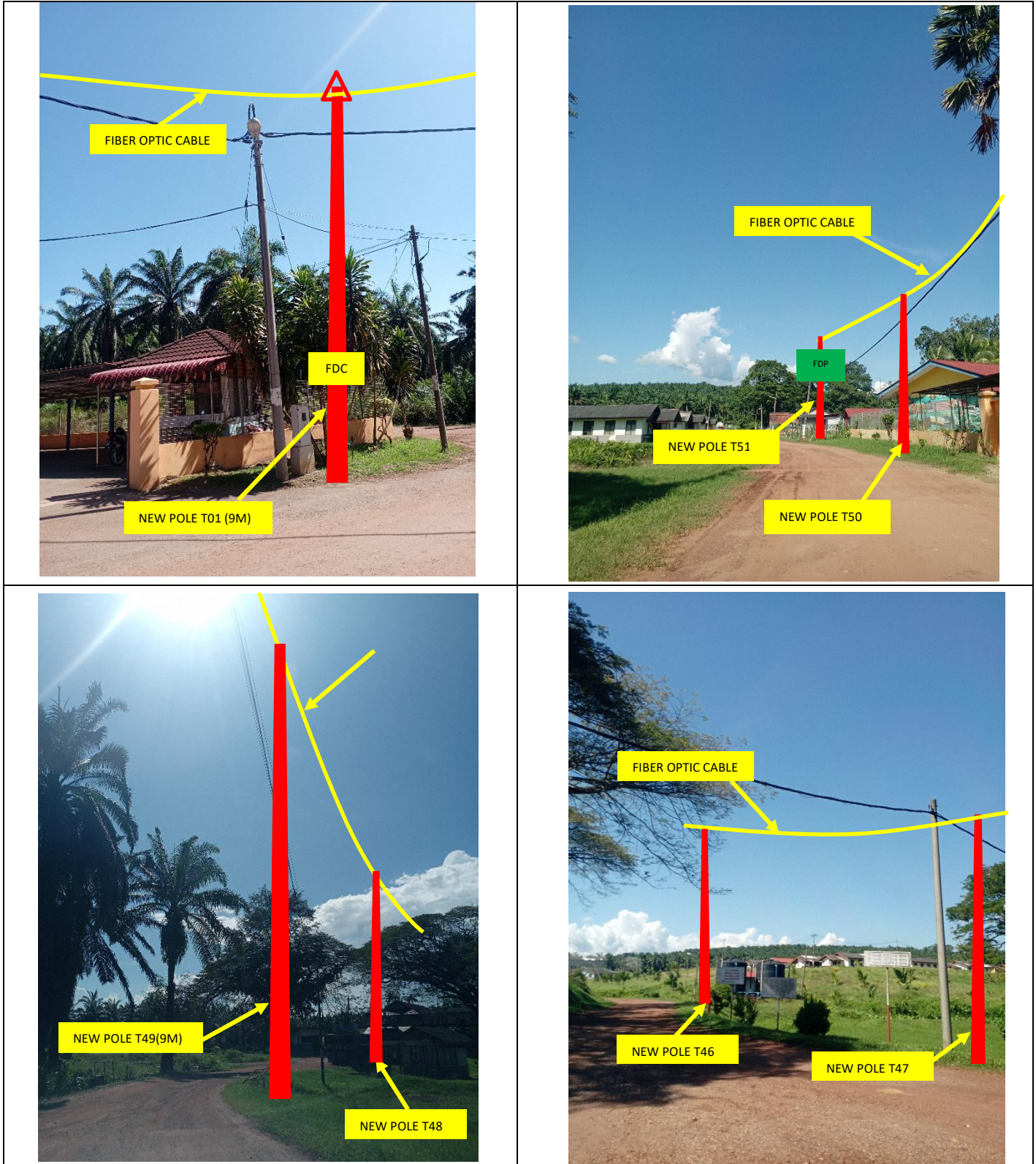
Proposed New Pole Coordinate					
No.	Pole Number	Distance (m)	Latitude	Longitude	Local Authority
1	FDC	35	4.853713	101.004870	Sime Darby Plantation
2	P001	35	4.854817	101.00131	Sime Darby Plantation
3	P002	35	4.855065	101.00152	Sime Darby Plantation
4	P003	35	4.855315	101.001741	Sime Darby Plantation
5	P004	35	4.855530	101.001947	Sime Darby Plantation
6	P005(9M)	35	4.855742	101.002161	Sime Darby Plantation
7	P006(9M)	35	4.855966	101.002372	Sime Darby Plantation
8	P007	35	4.855750	101.002603	Sime Darby Plantation
9	P008	35	4.855556	101.002848	Sime Darby Plantation
10	P009(9M)	35	4.855303	101.003040	Sime Darby Plantation
11	P010	35	4.855628	101.003959	Sime Darby Plantation
12	P011	35	4.855403	101.003745	Sime Darby Plantation
13	P012	35	4.855184	101.003542	Sime Darby Plantation
14	P013	30	4.855065	101.003433	Sime Darby Plantation
15	P014	35	4.855853	101.003704	Sime Darby Plantation
16	P015	35	4.855642	101.003481	Sime Darby Plantation
17	P016	35	4.855424	101.003299	Sime Darby Plantation
18	P017	35	4.855292	101.003187	Sime Darby Plantation
19	P018(9M)	20	4.855184	101.003260	Sime Darby Plantation
20	P019(9M)	20	4.855112	101.003106	Sime Darby Plantation
21	P020(9M)	20	4.854948	101.003127	Sime Darby Plantation
22	P021(9M)	25	4.854833	101.003152	Sime Darby Plantation
23	P022	35	4.855417	101.004820	Sime Darby Plantation
24	P023	35	4.855203	101.004631	Sime Darby Plantation
25	P024	35	4.855015	101.004464	Sime Darby Plantation
26	P025	35	4.855135	101.004323	Sime Darby Plantation
27	P026	35	4.855547	101.004430	Sime Darby Plantation
28	P027	35	4.855409	101.004299	Sime Darby Plantation
29	P028	35	4.855271	101.004176	Sime Darby Plantation
30	P029(9M)	35	4.855359	101.004050	Sime Darby Plantation
31	P030(9M)	35	4.855200	101.003880	Sime Darby Plantation
32	P031	35	4.855031	101.003723	Sime Darby Plantation
33	P032	35	4.854844	101.003519	Sime Darby Plantation

**Overall Pole (Proposed New)**

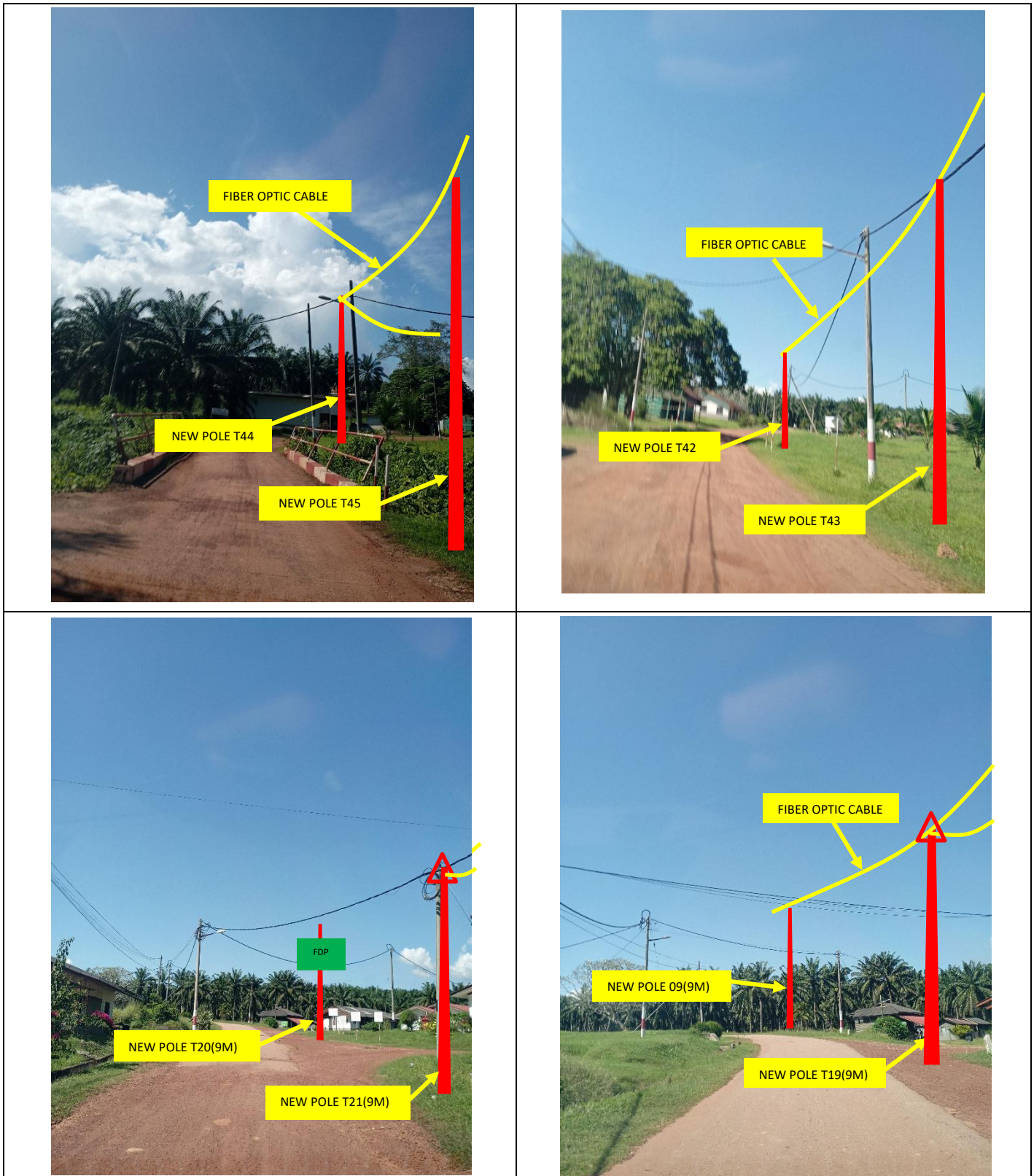
34	P033	35	4.854910	101.004469	Sime Darby Plantation
35	P034	35	4.854687	101.004250	Sime Darby Plantation
36	P035	35	4.854523	101.004078	Sime Darby Plantation
37	P036	35	4.854359	101.003922	Sime Darby Plantation
38	P037	35	4.855128	101.004243	Sime Darby Plantation
39	P038	35	4.854933	101.004047	Sime Darby Plantation
40	P039	35	4.854743	101.003855	Sime Darby Plantation
41	P040	35	4.854592	101.003695	Sime Darby Plantation
42	P041	35	4.854812	101.003338	Sime Darby Plantation
43	P042	35	4.854531	101.003208	Sime Darby Plantation
44	P043	35	4.854239	101.003318	Sime Darby Plantation
45	P044	35	4.853966	101.003468	Sime Darby Plantation
46	P045	35	4.853809	101.003739	Sime Darby Plantation
47	P046	35	4.853638	101.003987	Sime Darby Plantation
48	P047	35	4.853381	101.004150	Sime Darby Plantation
49	P048	35	4.853338	101.004440	Sime Darby Plantation
50	P049(9M)	35	4.853514	101.004703	Sime Darby Plantation
51	P050	35	4.854099	101.005016	Sime Darby Plantation
52	P051	25	4.853824	101.004901	Sime Darby Plantation
53	P052(9M)	35	4.853713	101.004870	Sime Darby Plantation

Bil	Type	7.5m	9.0m	Total
1	No. of Pole	41	11	52

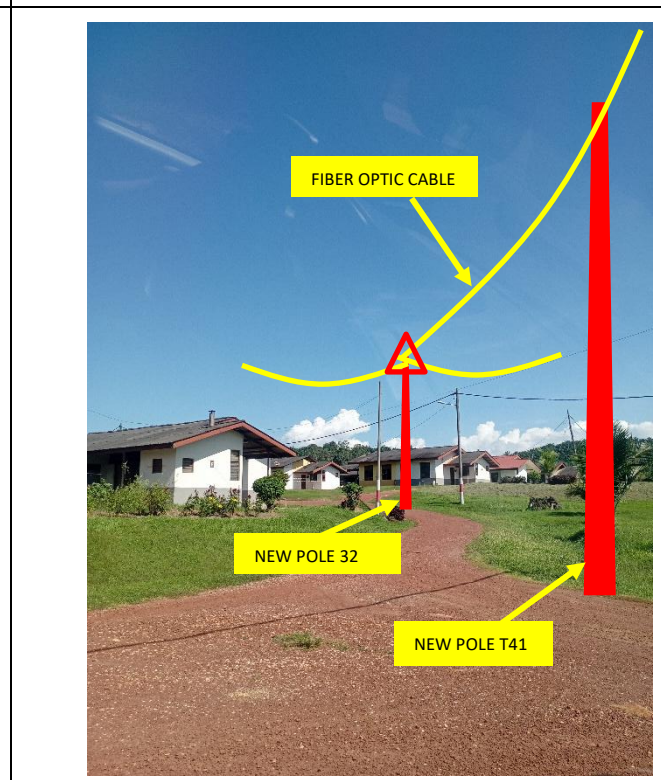
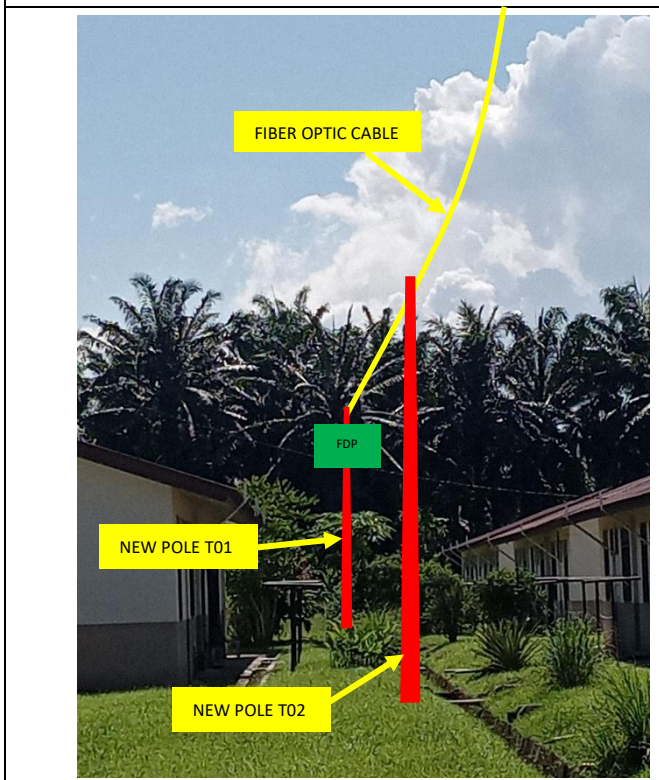
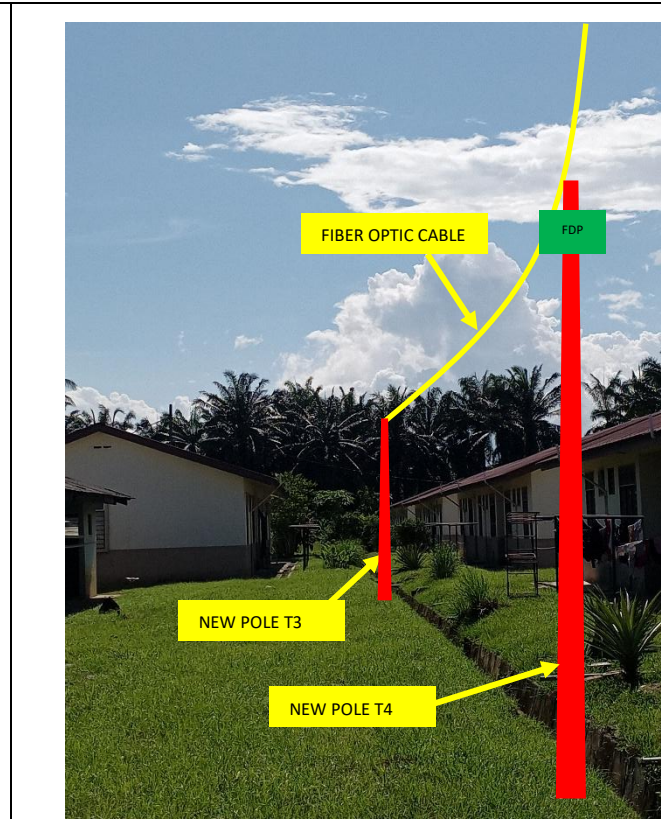
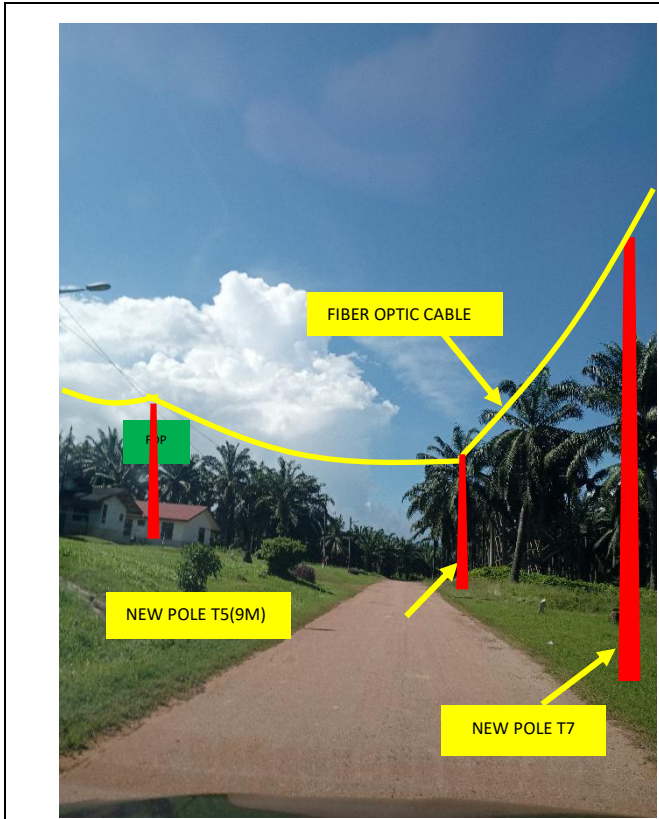
Site Photos – Proposed to install pole



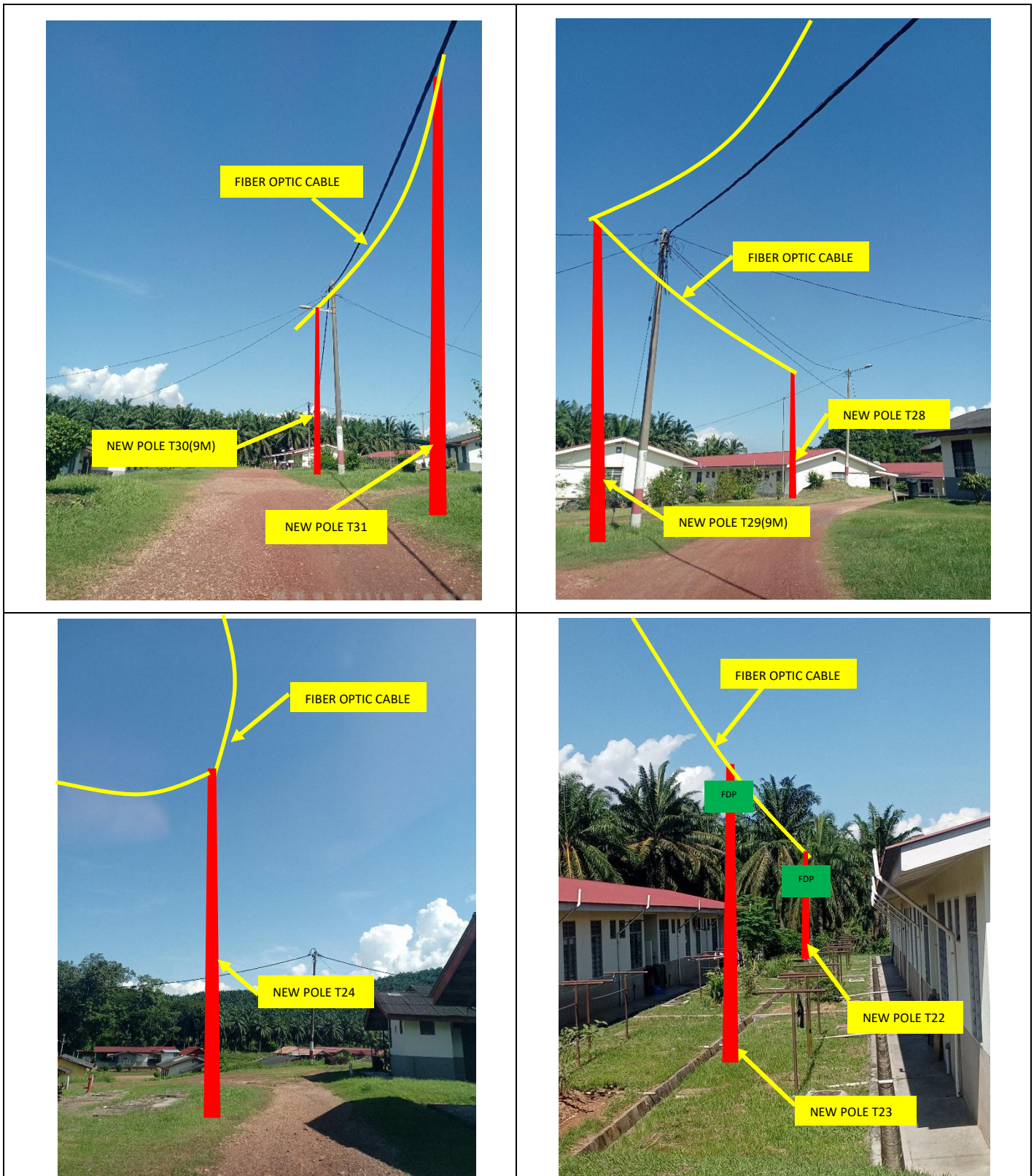
Site Photos – Proposed to install pole



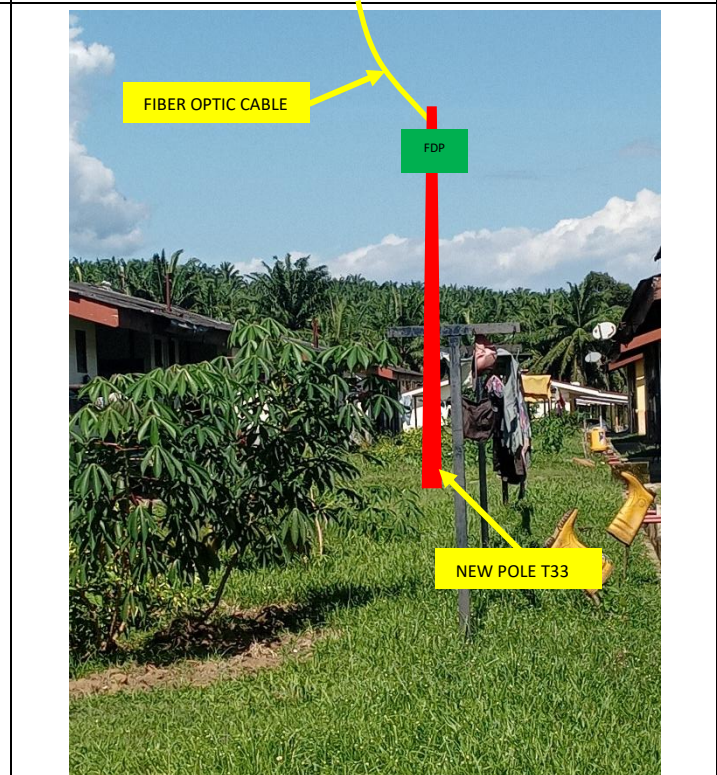
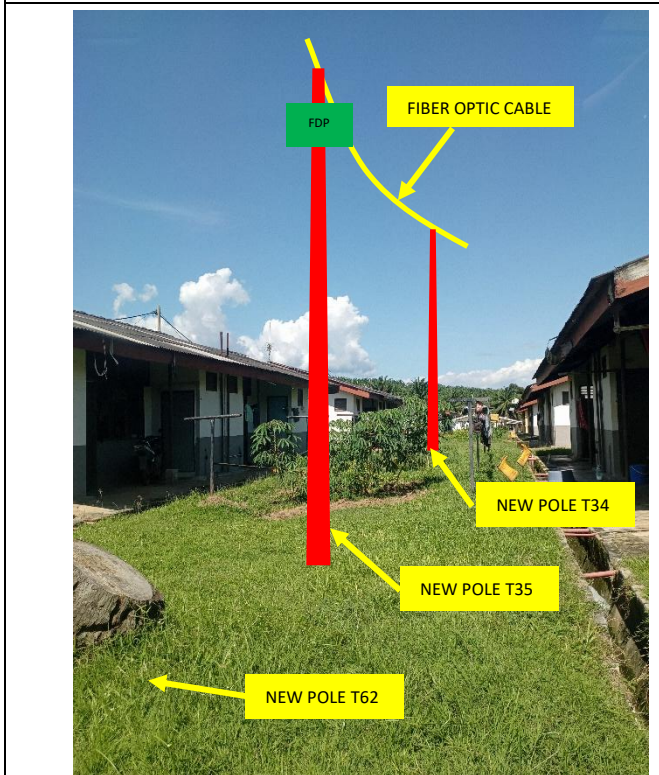
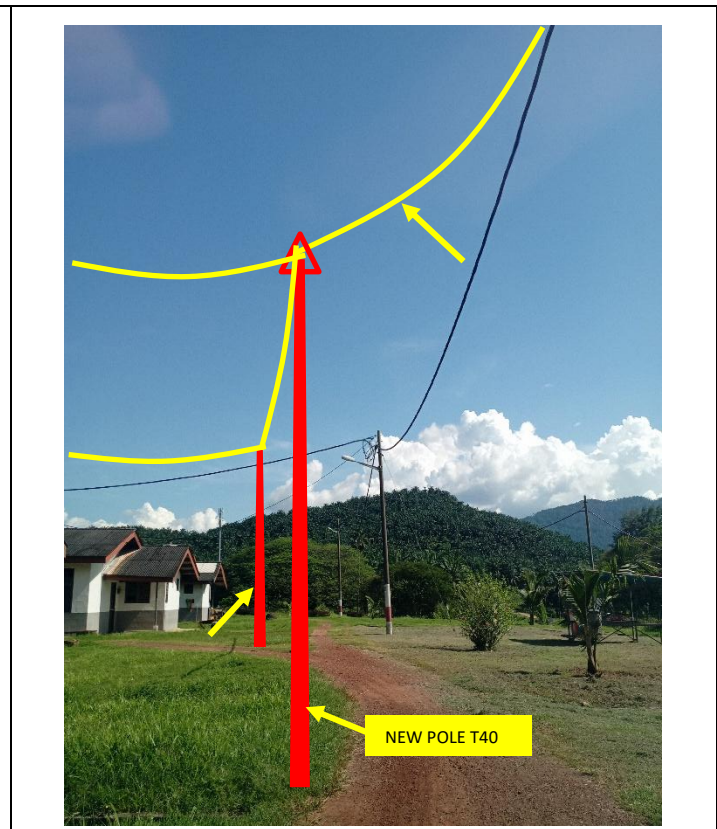
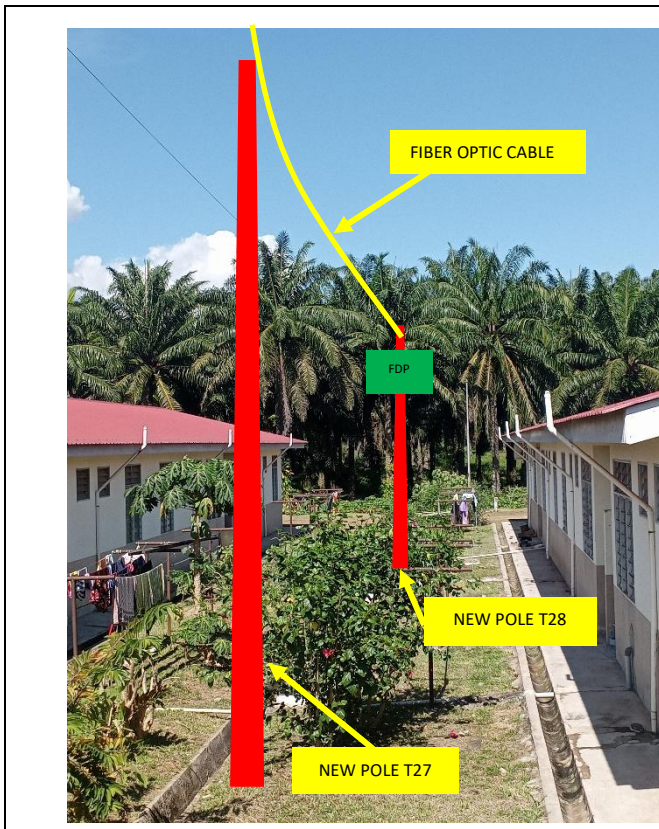
Site Photos – Proposed to install pole



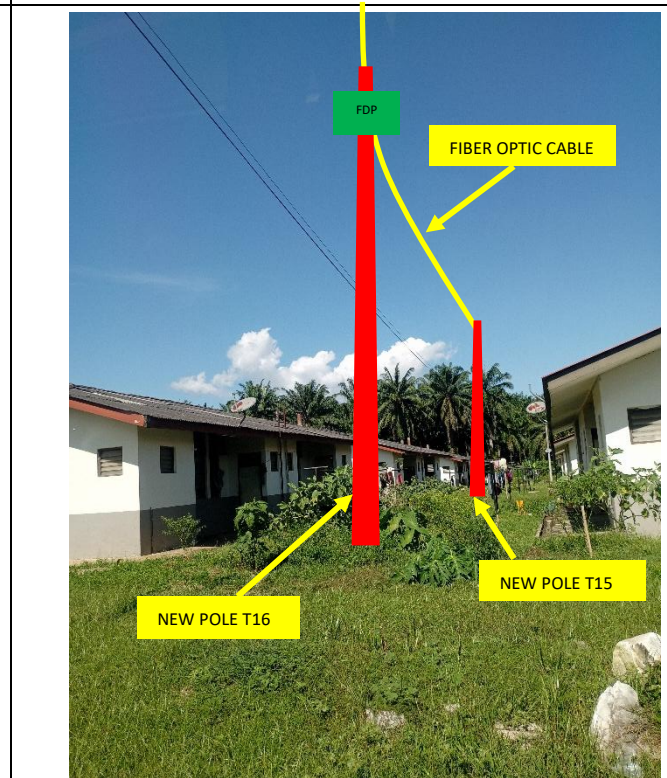
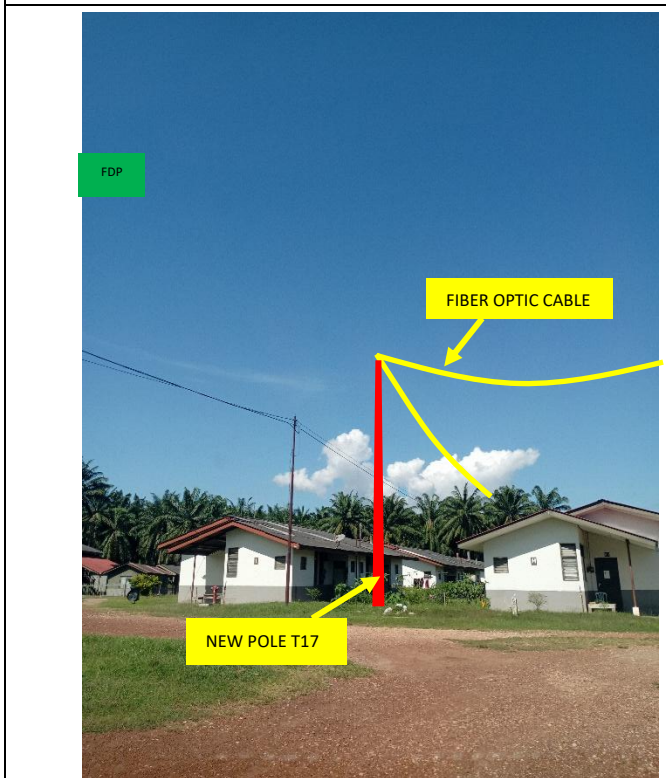
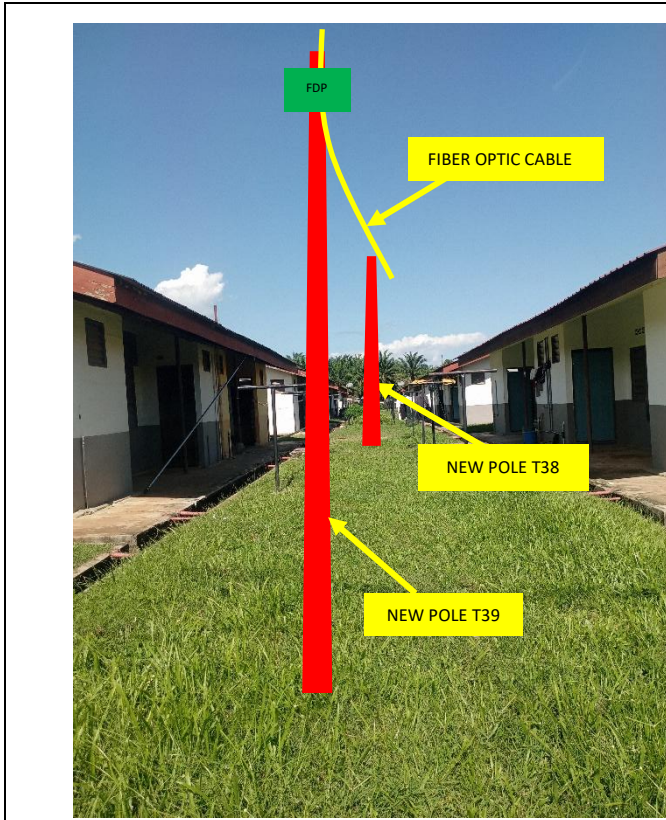
Site Photos – Proposed to install pole



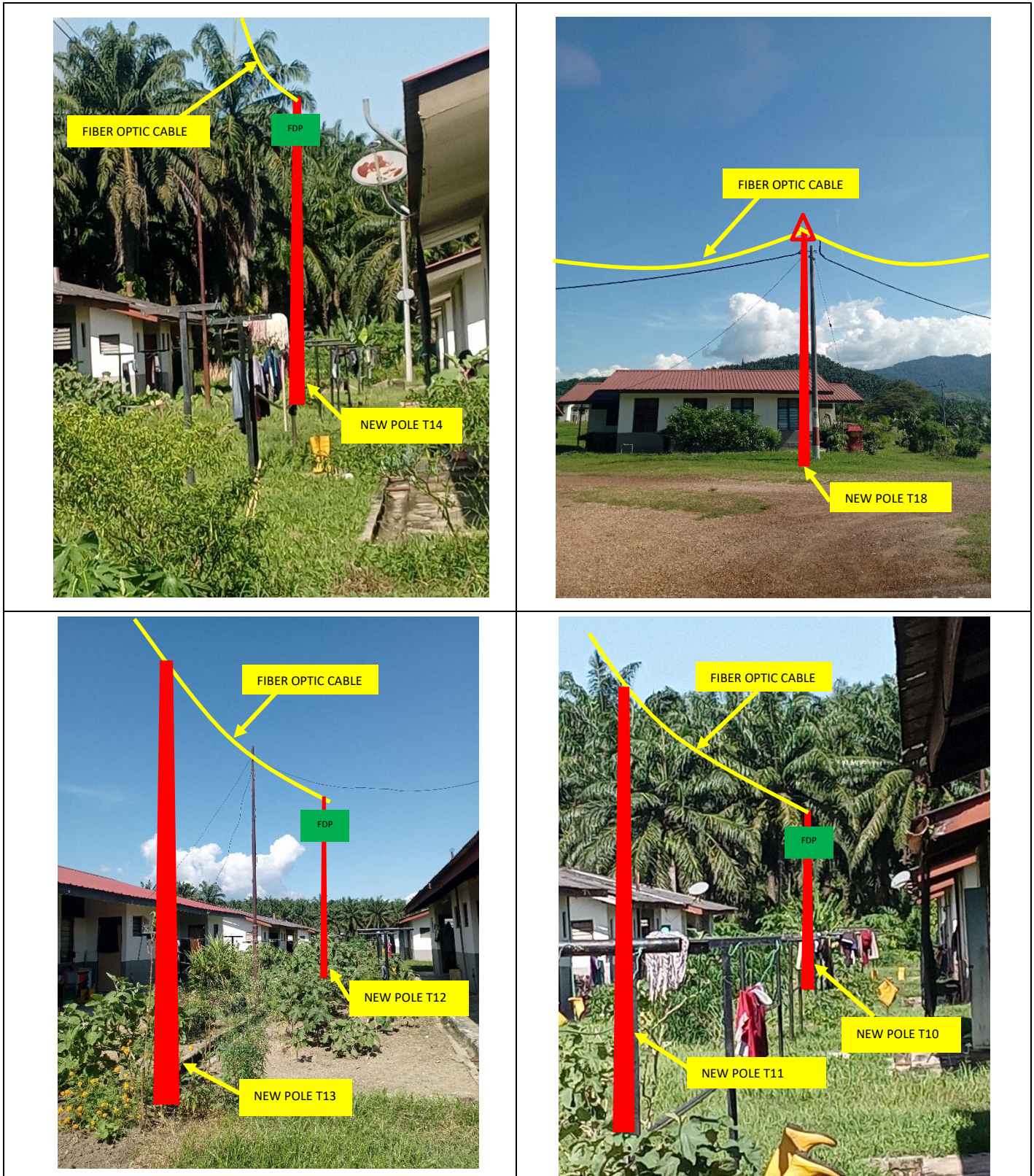
Site Photos – Proposed to install pole



Site Photos – Proposed to install pole



Site Photos – Proposed to install pole





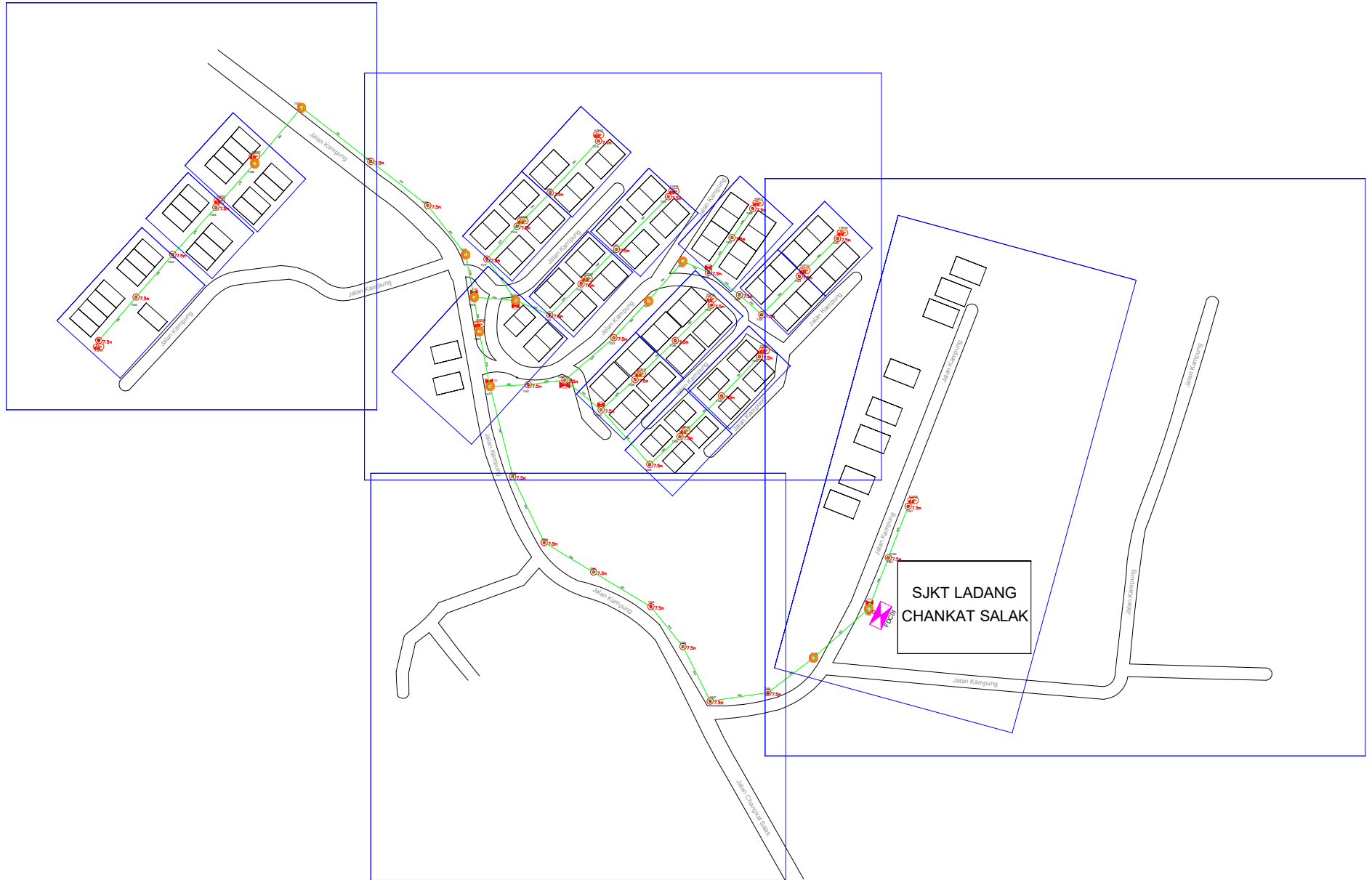
PROJEK PENYEDIAAN DAN PENYELENGGARAAN POINT OF PRESENCE (POP) FASA 2: HAB INFRASTRUKTUR GENTIAN OPTIK BERHAMPIRAN DENGAN SEKOLAH, KAWASAN PERINDUSTRIAN, PREMIS KERAJAAN DAN KOMUNITI SEKITARNYA OLEH KEMENTERIAN KOMUNIKASI MALAYSIA - ZON UTARA (KKMM.400-11/17/132(1))



3rd Parties Dependencies

No.	Local Council/ Authority	Remark
1	JKR Kuala Kangsar	
2	Majlis Perbandaran Kuala Kangsar	
3		
4		
5		
6		

# SJKT LADANG CHANGKAT SALAK



## LEGEND

12C FOC	Installed 1:8 splitter in FDC	Installed Pole (9m)	11 ea	MANHOLE (JRC7)	TS / TB Tension Small/Tension Big	HDD	SEE A-A in this page
24C FOC	FDP with (1:8) splitter	Installed Riser	1 ea	House Number	Existing Manhole	GR	SEE SHEET XXX
48C FOC	Closure	TENSION		Existing TNB Pole	C01 Closure NO.	Existing TNB Pole 11m	
96C FOC	New Manhole (PIT)	SUSPENSION		LOOP	FDP1 FDP NO.	Existing TNB Pole NO.	
144C FOC	Installed Pole (7.5M)	FDC	1 ea	FDP Boundary	FDC FDC NO.	P001 New Pole NO.	

KEY PLAN :	OWNER / DEVELOPER:  KEMENTERIAN KOMUNIKASI DAN DIGITAL	MAIN CONTRACTOR:  PRIVASAT	SUB-CONTRACTOR:  ARAMIN SDN BHD	PROJECT TITLE: PROJEK PENYEDIAAN DAN PENYELENGGARAAN POINT OF PRESENCE (POP) FASA 2: HAB INFRASTRUKTUR GENTIAN OPTIK BERHAMPIRAN DENGAN SEKOLAH, KAWASAN PERINDUSTRIAN, PREMIS KERAJAAN DAN KOMUNITI SEKITARNYA OLEH KEMENTERIAN KOMUNIKASI MALAYSIA – ZON UTARA (KKMM.400-11/17/132(1))
------------	---	---	---	---

DRAWING TITLE: D SIDE- SJKT LADANG CHANGKAT SALAK	Design By : REZQ INFINITY	Date : 13/01/2025
PROJECT PHASE: PROPOSED DRAWING	Drawn By : REZQ INFINITY	Scale : NOT TO SCALE
	Checked By :	Job Number : REV00
	DRAWING NUMBER :	Sheet : 1/6
	THIS PRINT AND ITS COPYRIGHT ARE THE PROPERTY OF ALLO TECHNOLOGY SDN BHD	
		Size : A3

# SJKT LADANG CHANGKAT SALAK



## LEGEND

12C FOC	Installed 1:8 splitter in FDC	Installed Pole (9m)	11 ea	MANHOLE (JRC?)	TS / TB Tension Small/Tension Big	HDD	
24C FOC	FDP with (1:8) splitter	Installed Riser	1 ea	House Number	Existing Manhole	GR	
48C FOC	Closure	TENSION	7 ea	Existing TNB Pole	C01 Closure NO.	Existing TNB Pole 11m	SEE A-A in this page
96C FOC	New Manhole (PIT)	SUSPENSION	41 ea	LOOP	FDP1 FDP NO.	Existing TNB Pole NO.	SEE SHEET XXX
144C FOC	Installed Pole (7.5m)	FDC	1 ea	FDP Boundary	FDC FDC NO.	P001 New Pole NO.	

KEY PLAN :

OWNER / DEVELOPER:



MAIN CONTRACTOR:



SUB-CONTRACTOR:



PROJECT TITLE:

PROJEK PENYEDIAAN DAN PENYELENGGARAAN POINT OF PRESENCE (POP) FASA 2: HAB INFRASTRUKTUR GENTIAN OPTIK BERHAMPIRAN DENGAN SEKOLAH, KAWASAN PERINDUSTRIAN, PREMIS KERAJAAN DAN KOMUNITI SEKITARNYA OLEH KEMENTERIAN KOMUNIKASI MALAYSIA – ZON UTARA (KKMM.400-11/17/132(1))

DRAWING TITLE:

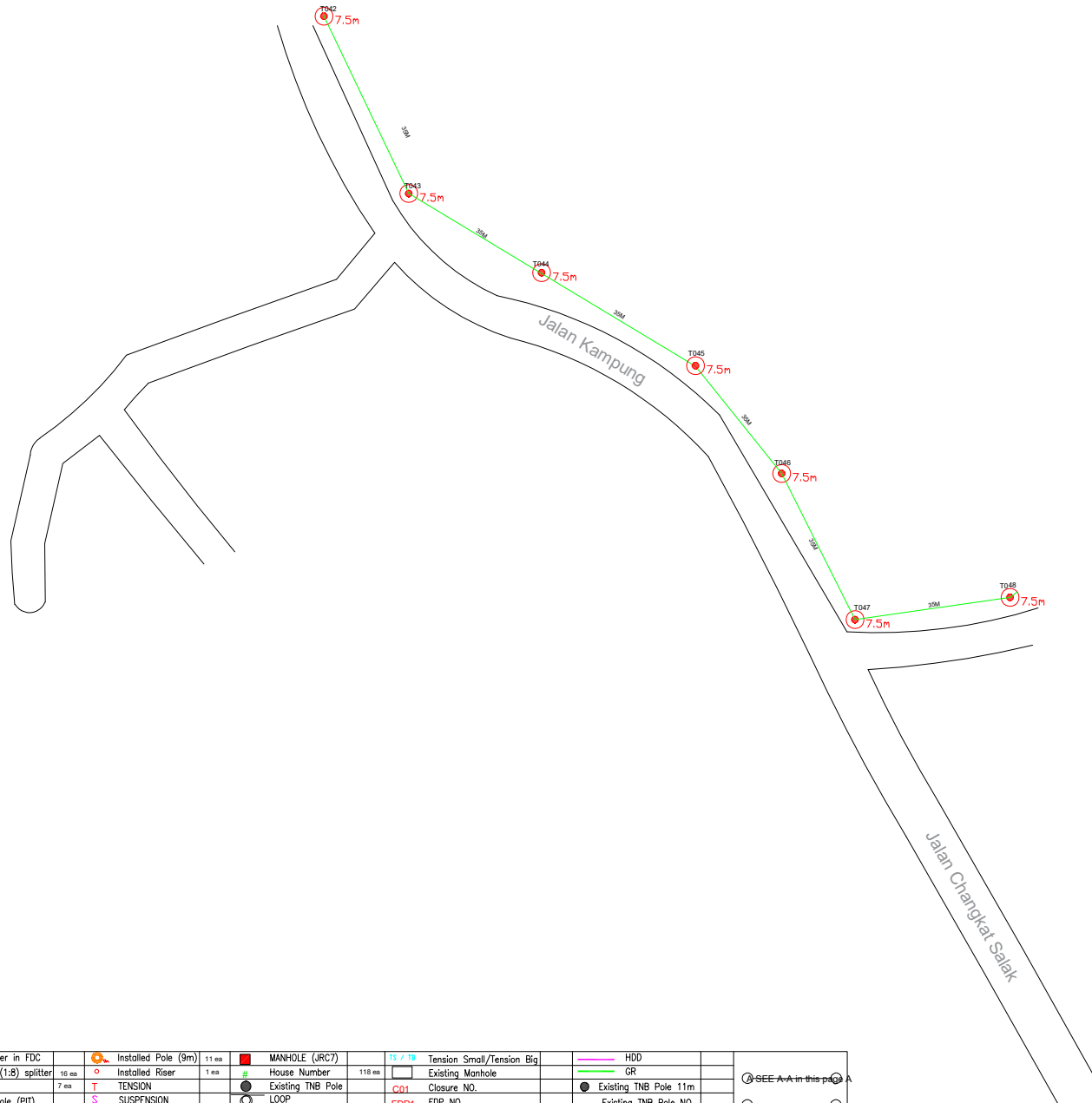
D SIDE- SJKT LADANG CHANGKAT SALAK

PROJECT PHASE:

PROPOSED DRAWING

Design By : REZQ INFINITY	Date : 13/01/2025
Drawn By : REZQ INFINITY	Scale : NOT TO SCALE
Checked By :	Job Number : REV00
DRAWING NUMBER :	Sheet : 2/6
THIS PRINT AND ITS COPYRIGHT ARE THE PROPERTY OF ALLO TECHNOLOGY SDN BHD	
	Size : A3

# SJKT LADANG CHANGKAT SALAK



## LEGEND

12C FOC	Installed 1:8 splitter in FDC	Installed Pole (9m)	11 ea	MANHOLE (JRC?)	TS / TB Tension Small/Tension Big	HDD	
24C FOC	FDP with (1:8) splitter	Installed Riser	1 ea	House Number	Existing Manhole	GR	
48C FOC	Closure	TENSION		Existing TNB Pole	C01 Closure NO.	Existing TNB Pole 11m	SEE A-A in this page
96C FOC	New Manhole (PIT)	SUSPENSION		LOOP	FDP1 FDP NO.	Existing TNB Pole NO.	SEE SHEET XXX
144C FOC	Installed Pole (7.5m)	FDC	1 ea	FDP Boundary	FDC FDC NO.	P001 New Pole NO.	

KEY PLAN :

OWNER / DEVELOPER:



MAIN CONTRACTOR:



SUB-CONTRACTOR:



PROJECT TITLE:

PROJEK PENYEDIAAN DAN PENYELENGGARAAN POINT OF PRESENCE (POP) FASA 2: HAB INFRASTRUKTUR GENTIAN OPTIK BERHAMPIRAN DENGAN SEKOLAH, KAWASAN PERINDUSTRIAN, PREMIS KERAJAAN DAN KOMUNITI SEKITARNYA OLEH KEMENTERIAN KOMUNIKASI MALAYSIA – ZON UTARA (KKMM.400-11/17/132(1))

DRAWING TITLE:

D SIDE- SJKT LADANG CHANGKAT SALAK

PROJECT PHASE:

PROPOSED DRAWING

Design By : REZQ INFINITY Date : 13/01/2025

Drawn By : REZQ INFINITY Scale : NOT TO SCALE

Checked By : Job Number : REV00

DRAWING NUMBER : Sheet :

3/6

THIS PRINT AND ITS COPYRIGHT ARE THE PROPERTY OF ALLO TECHNOLOGY SDN BHD Size : A3

# SJKT LADANG CHANGKAT SALAK



## LEGEND

12C FOC	Installed 1:8 splitter in FDC	Installed Pole (9m)	11 ea	MANHOLE (JRC7)	TS / TB Tension Small/Tension Big	HDD	SEE A-A in this page
24C FOC	FDP with (1:8) splitter	Installed Riser	1 ea	House Number	Existing Manhole	GR	SEE SHEET XXX
48C FOC	Closure	TENSION	7 ea	Existing TNB Pole	C01 Closure NO.	Existing TNB Pole 11m	
96C FOC	New Manhole (PIT)	SUSPENSION	41 ea	LOOP	FDP1 FDP NO.	Existing TNB Pole NO.	
144C FOC	Installed Pole (7.5M)	FDC	1 ea	FDP Boundary	FDC FDC NO.	P001 New Pole NO.	

KEY PLAN :

OWNER / DEVELOPER:



KEMENTERIAN KOMUNIKASI DAN DIGITAL

MAIN CONTRACTOR:



SUB-CONTRACTOR:



PROJECT TITLE:

PROJEK PENYEDIAAN DAN PENYELENGGARAAN POINT OF PRESENCE (POP) FASA 2: HAB INFRASTRUKTUR GENTIAN OPTIK BERHAMPIRAN DENGAN SEKOLAH, KAWASAN PERINDUSTRIAN, PREMIS KERAJAAN DAN KOMUNITI SEKITARNYA OLEH KEMENTERIAN KOMUNIKASI MALAYSIA – ZON UTARA (KKMM.400-11/17/132(1))

DRAWING TITLE:

D SIDE- SJKT LADANG CHANGKAT SALAK

PROJECT PHASE:

PROPOSED DRAWING

Design By : REZQ INFINITY Date : 13/01/2025

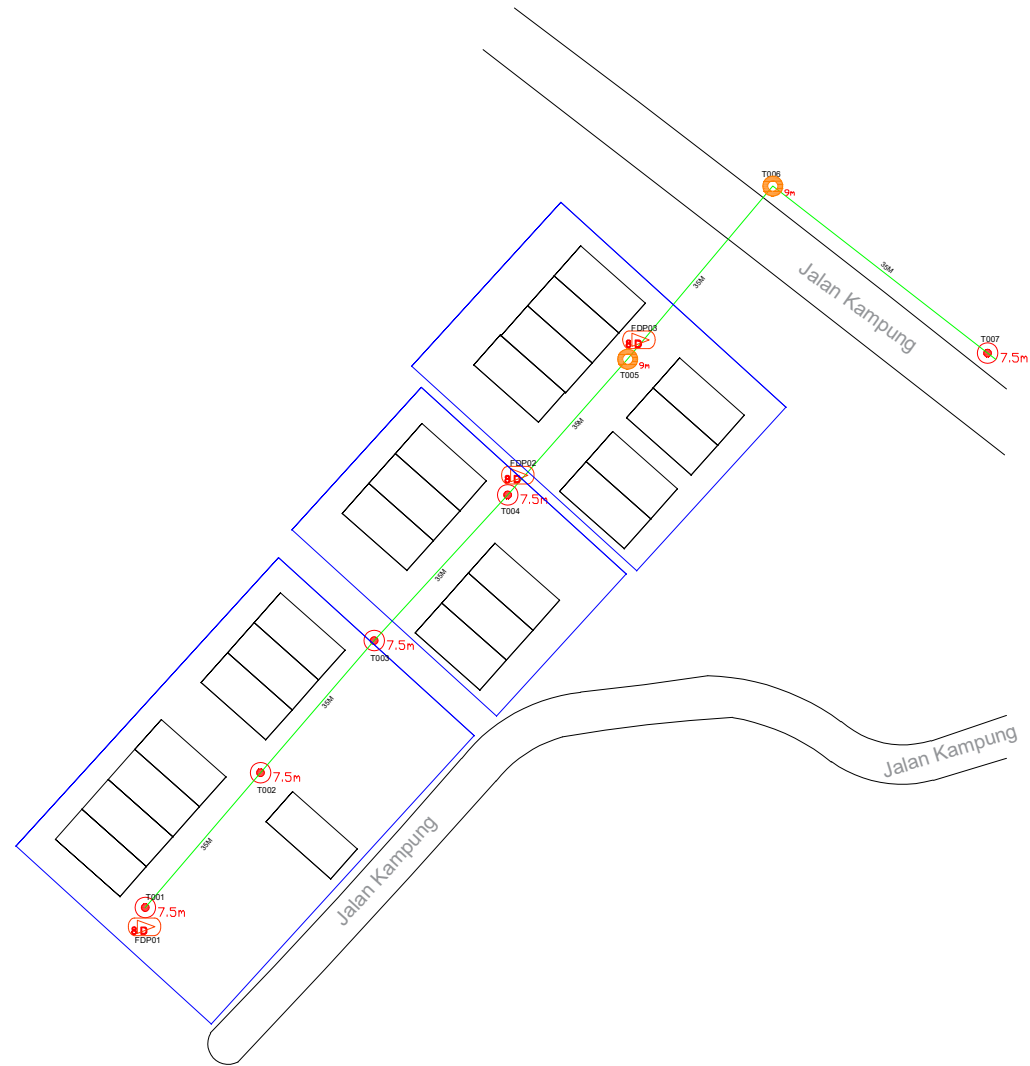
Drawn By : REZQ INFINITY Scale : NOT TO SCALE

Checked By : Job Number : REV00

DRAWING NUMBER : Sheet : 4/6

THIS PRINT AND ITS COPYRIGHT ARE THE PROPERTY OF ALLO TECHNOLOGY SDN BHD Size : A3

# SJKT LADANG CHANGKAT SALAK



## LEGEND

12C FOC	Installed 1:8 splitter in FDC	Installed Pole (9m)	11 ea	MANHOLE (JRC7)	TS / TB Tension Small/Tension Big	HDD	
24C FOC	FDP with (1:8) splitter	Installed Riser	1 ea	House Number	Existing Manhole	GR	
48C FOC	Closure	TENSION	7 ea	Existing TNB Pole	C01 Closure NO.	Existing TNB Pole 11m	SEE A-A in this page
96C FOC	New Manhole (PIT)	SUSPENSION	41 ea	LOOP	FDP1 FDP NO.	Existing TNB Pole NO.	SEE SHEET XXX
144C FOC	Installed Pole (7.5m)	FDC	1 ea	FDP Boundary	FDC FDC NO.	PO01 New Pole NO.	

KEY PLAN :

OWNER / DEVELOPER:



MAIN CONTRACTOR:



SUB-CONTRACTOR:



PROJECT TITLE:

PROJEK PENYEDIAAN DAN PENYELENGGARAAN POINT OF PRESENCE (POP) FASA 2: HAB INFRASTRUKTUR GENTIAN OPTIK BERHAMPIRAN DENGAN SEKOLAH, KAWASAN PERINDUSTRIAN, PREMIS KERAJAAN DAN KOMUNITI SEKITARNYA OLEH KEMENTERIAN KOMUNIKASI MALAYSIA – ZON UTARA (KKMM.400-11/17/132(1))

DRAWING TITLE:

D SIDE- SJKT LADANG CHANGKAT SALAK

PROJECT PHASE:

PROPOSED DRAWING

Design By : REZQ INFINITY Date : 13/01/2025

Drawn By : REZQ INFINITY Scale : NOT TO SCALE

Checked By : Job Number : REV00

DRAWING NUMBER : Sheet :

5/6

THIS PRINT AND ITS COPYRIGHT ARE THE PROPERTY OF ALLO TECHNOLOGY SDN BHD Size : A3

