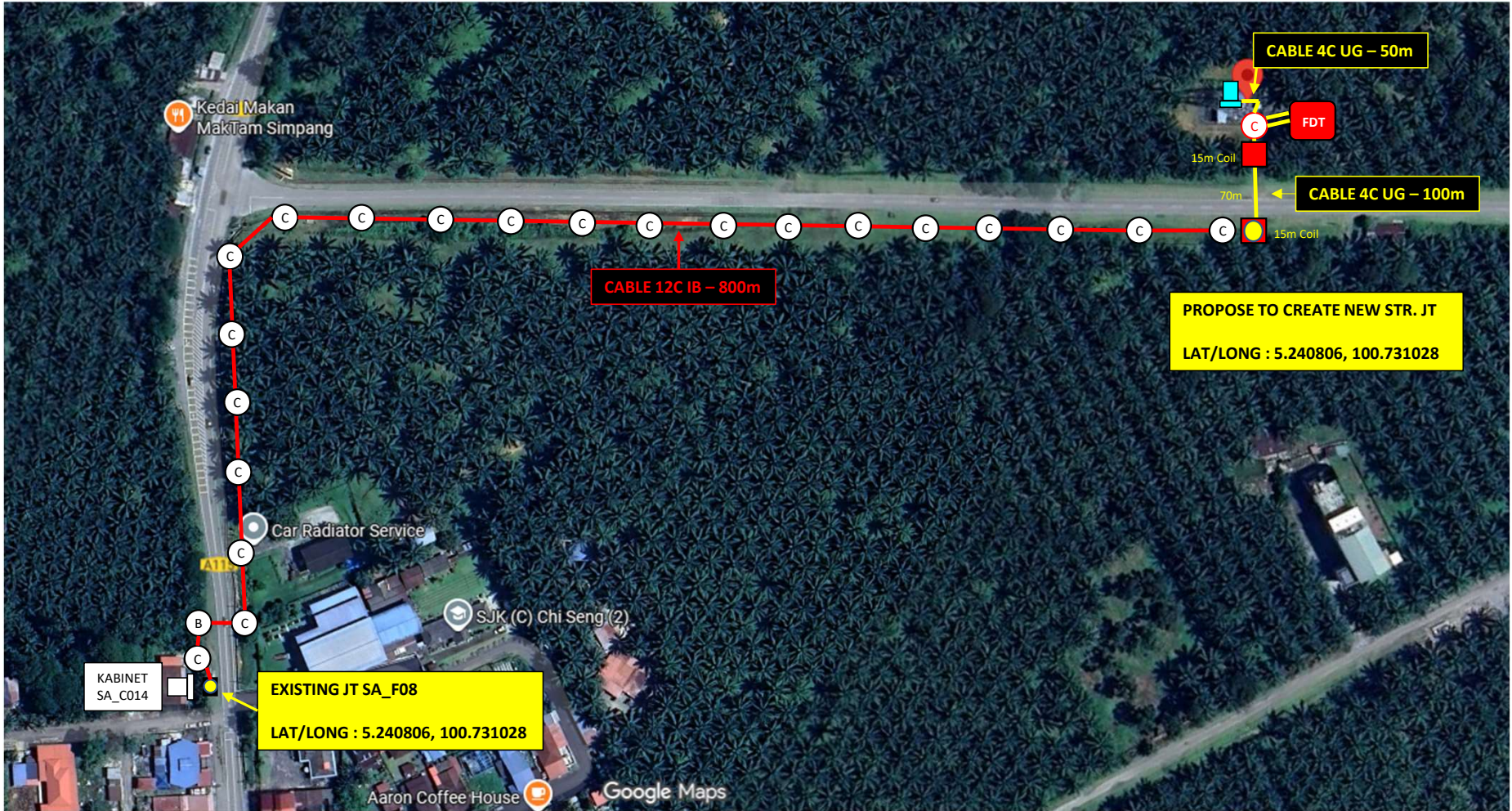


PLAN SI

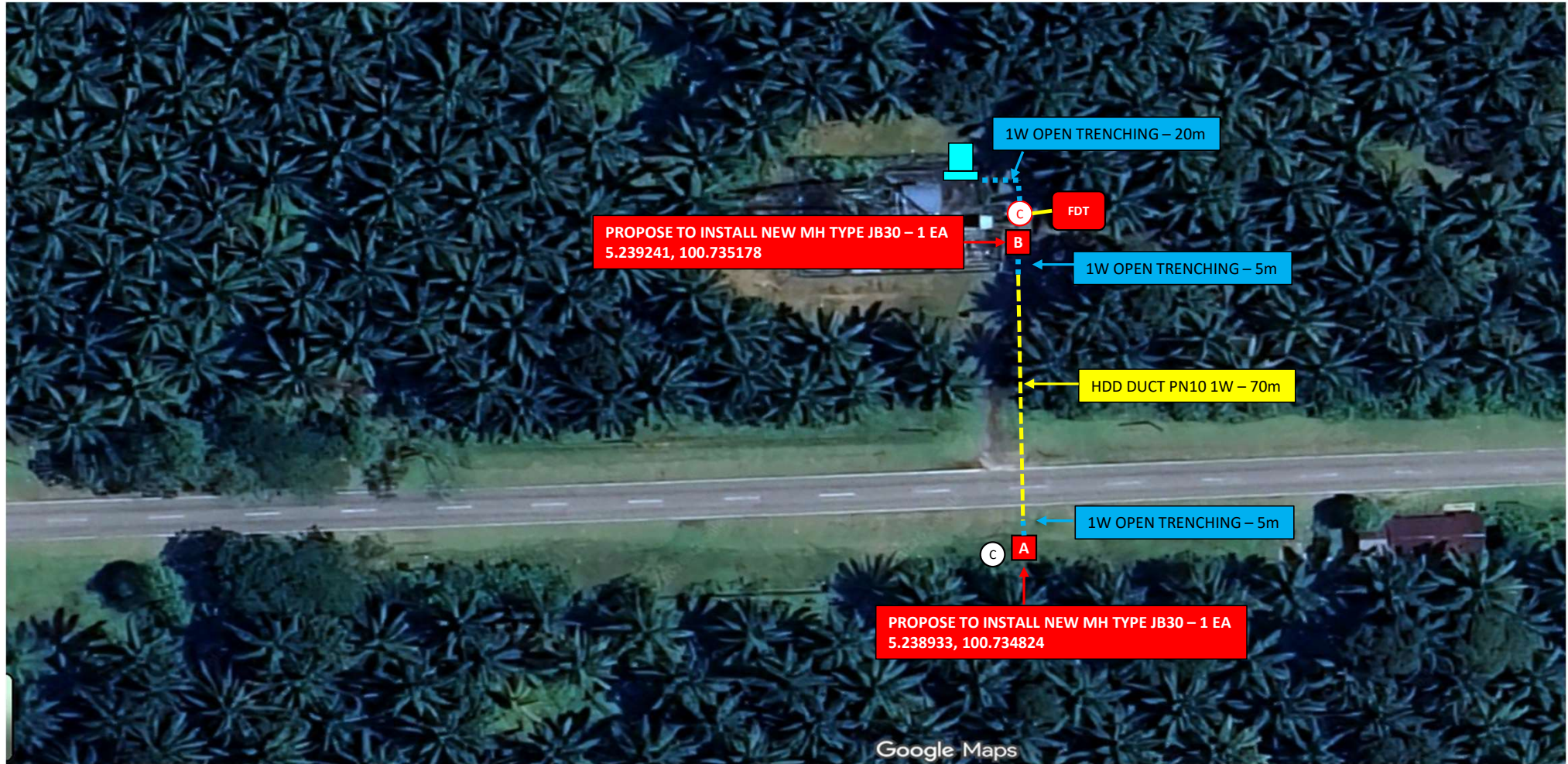
Detail Fiber Route to the site – Rev Ver.



Legend:  5G Cabinet  Joint  New Pole Concrete 7.5m  New MH TYPE JB30  Ext Pole Concrete  New FDT

PLAN SI

New Civil



- Legend:
- 5G Cabinet
 - Joint
 - New Pole Concrete 7.5m
 - New MH TYPE JB30
 - Ext Pole Concrete
 - New FDT

New Civil details

No	PU ID	PU Desc	GPS Coordinate
1	908199	DSGN/S/I/1-WAY HDPE DUCT PN10	START POINT - 5.238933, 100.734824 END POINT - 5.239241, 100.735178
2	908137	S/I 1 WAY OPEN TRENCHING (ORI MAX)	POINT A - 5.238933, 100.734824 POINT B - 5.239241, 100.735178
3	108389	INS MANHOLE PRE-FAB JB30	MH A - 5.238933, 100.734824 MH B - 5.239241, 100.735178
4			
5			
6			
7			
8			
9			
10			

New Civil Illustrations



END OF TECHNICAL PROPOSAL