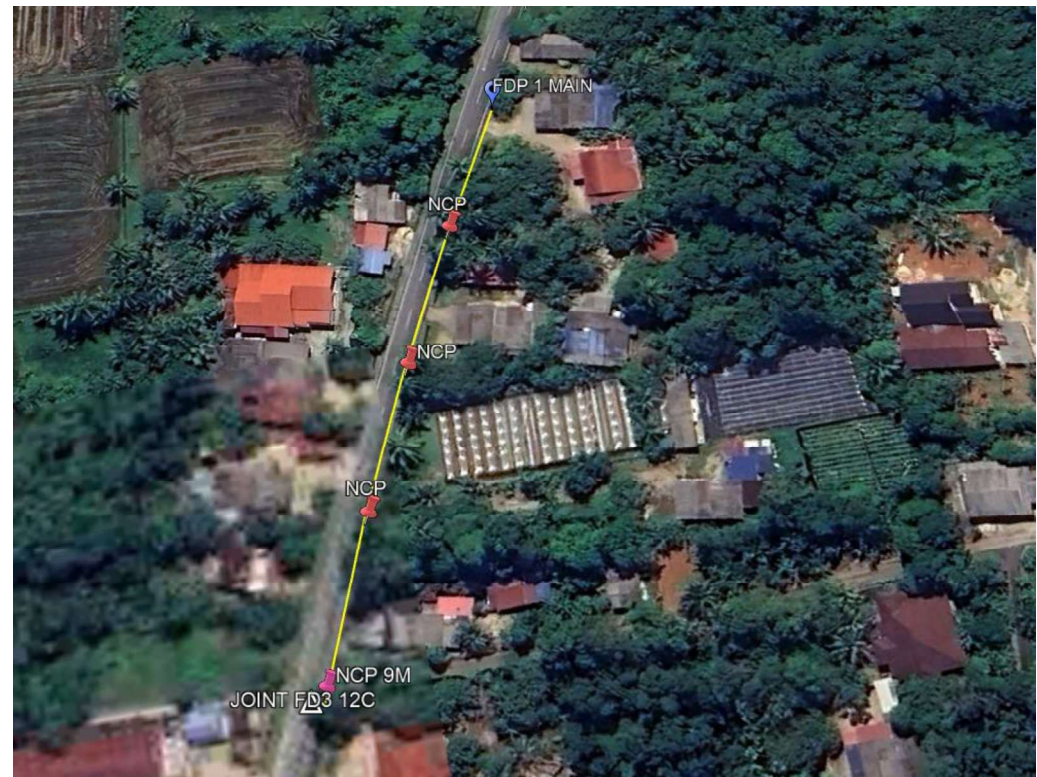


2.1 FDP Details and Illustration

| No | Info | Road/Location | Type | Lat/Long |
|----|----------|--|----------------|----------------------|
| 1 | New DP 1 | HADAPAN LOT 1115 KG KERANDANG, 22000 JERTEH, TERENGGANU | JH_C015_DP0015 | 5.736771, 102.554992 |

Propose Location



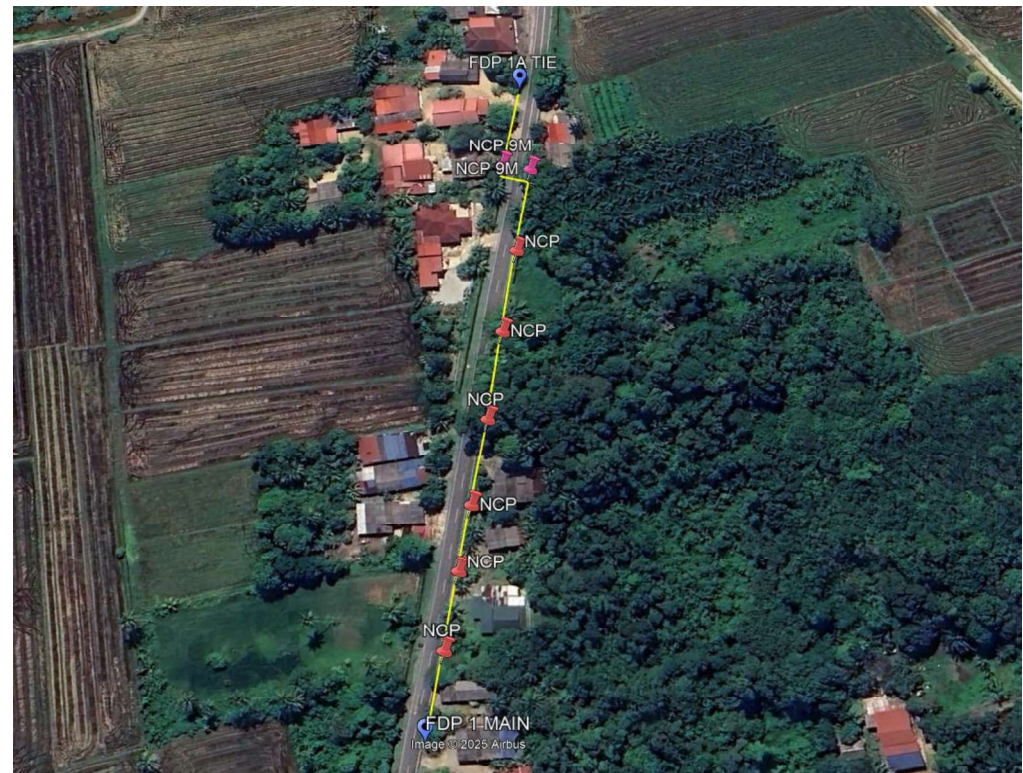
Legend:

 FDP Location

2.1 FDP Details and Illustration

| No | Info | Road/Location | Type | Lat/Long |
|----|----------|--|----------------|----------------------|
| 1 | New DP1A | HADAPAN LOT 2814 KG KERANDANG, 22000 JERTEH, TERENGGANU | JH_C015_DP015A | 5.738829, 102.555995 |

Propose Location



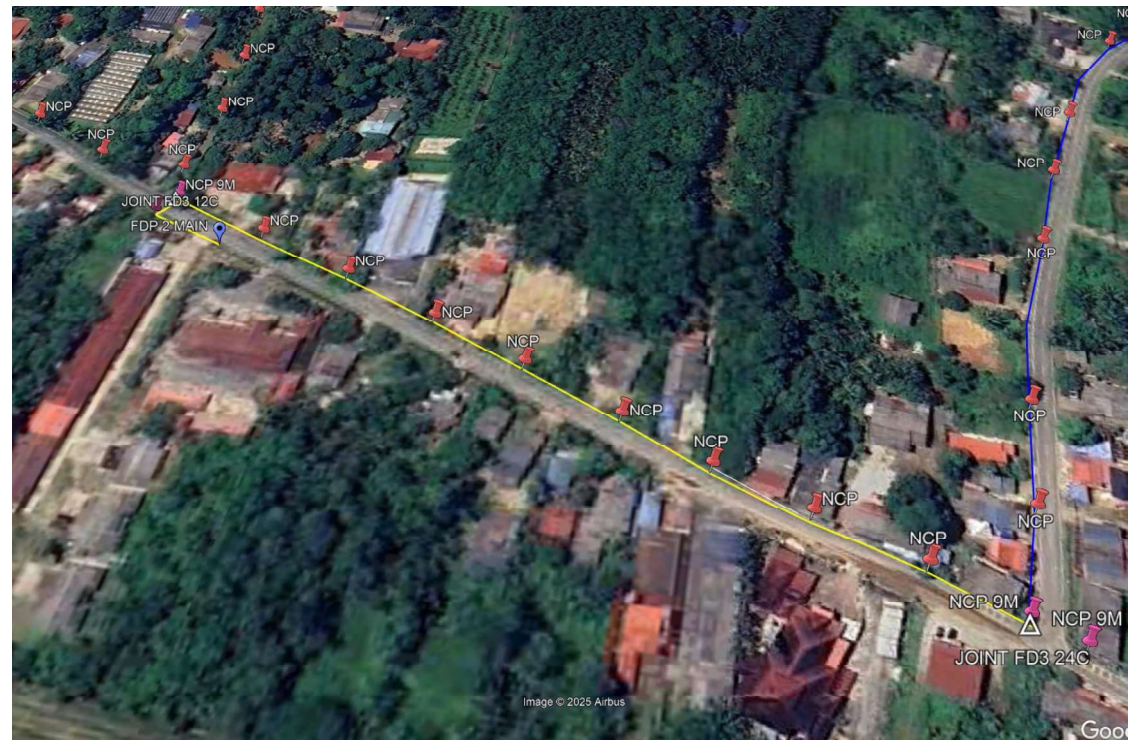
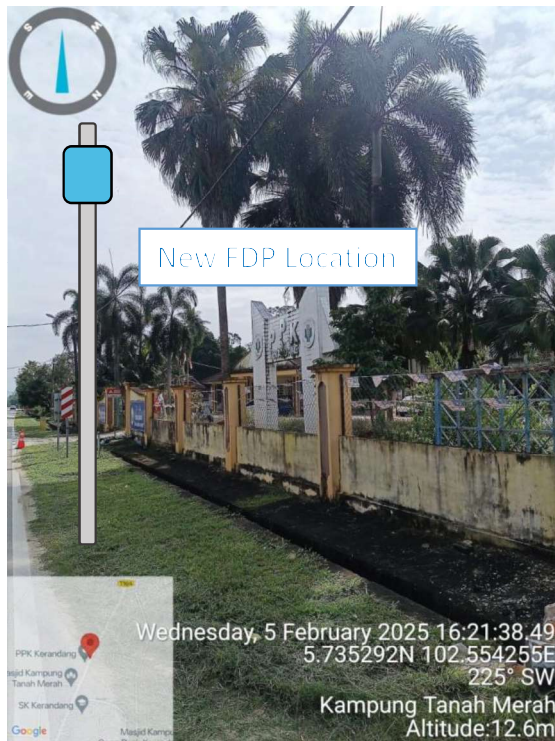
Legend:

 FDP Location

2.1 FDP Details and Illustration

| No | Info | Road/Location | Type | Lat/Long |
|----|----------|---|----------------|----------------------|
| 1 | New DP 2 | HADAPAN PELADANG KERANDANG, 22000 JERTEH, TERENGGANU | JH_C015_DP0015 | 5.735213, 102.554192 |

Propose Location



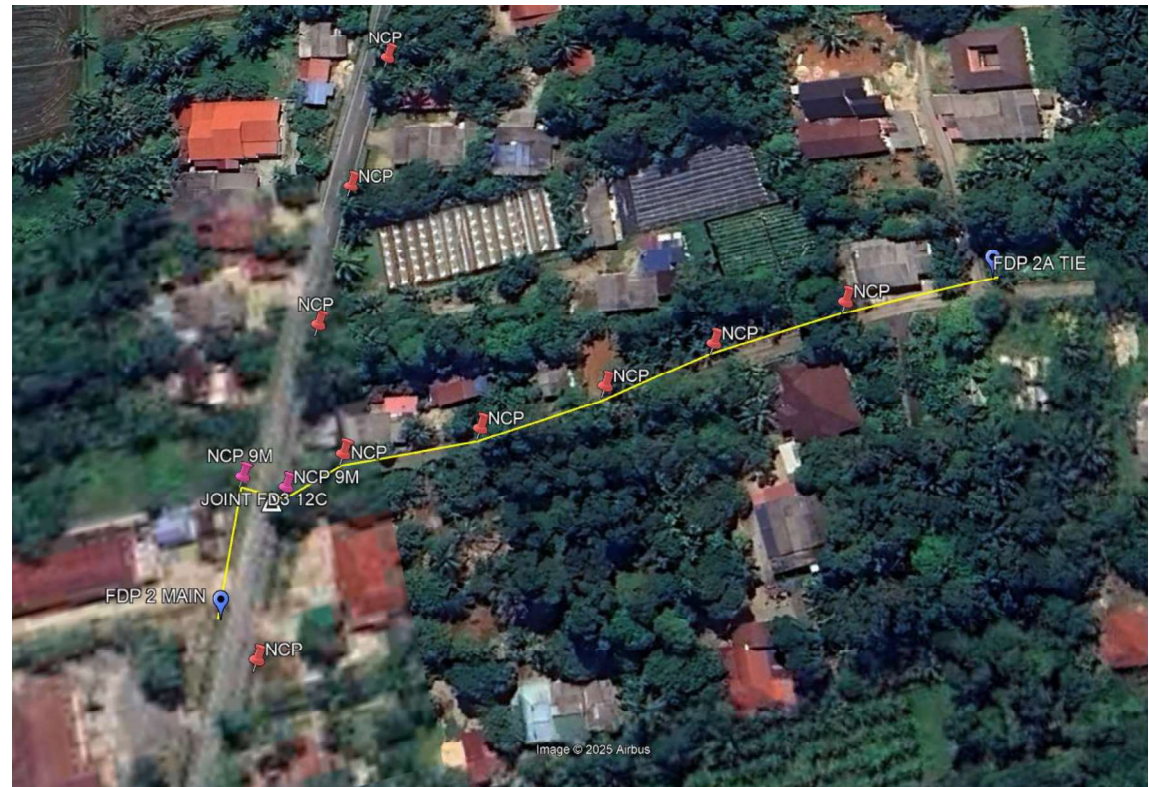
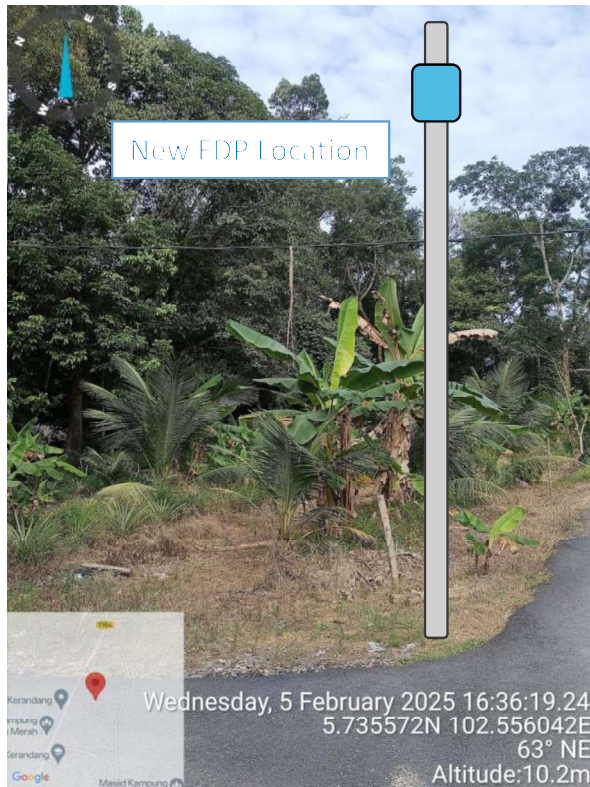
Legend:



2.1 FDP Details and Illustration

| No | Info | Road/Location | Type | Lat/Long |
|----|----------|--|----------------|----------------------|
| 1 | New DP2A | HADAPAN LOT 1168 KG KERANDANG, 22000 JERTEH, TERENGGANU | JH_C015_DP015A | 5.735587, 102.556090 |

Propose Location



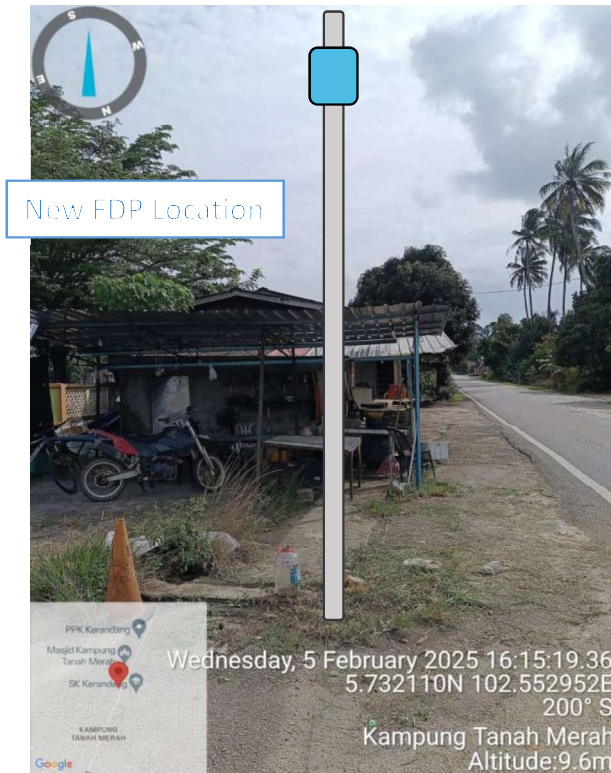
Legend:

 FDP Location

2.1 FDP Details and Illustration

| No | Info | Road/Location | Type | Lat/Long |
|----|----------|--|----------------|----------------------|
| 1 | New DP 3 | HADAPAN SK KERANDANG, 22000 JERTEH, TERENGGANU | JH_C015_DP0015 | 5.732080, 102.552931 |

Propose Location



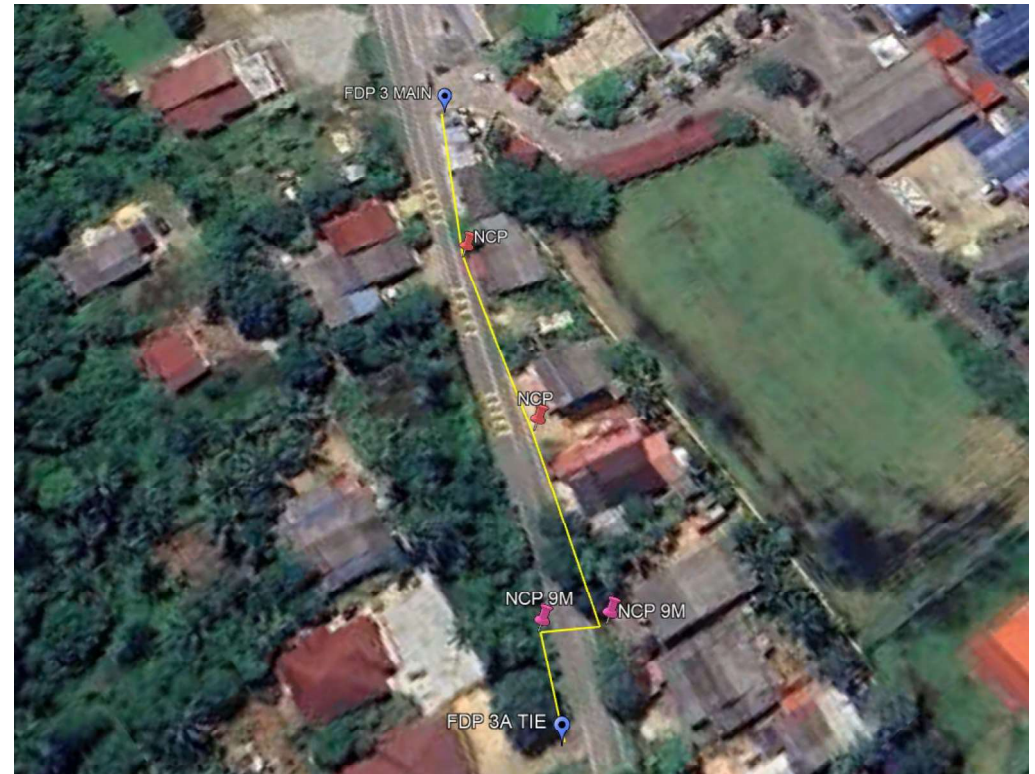
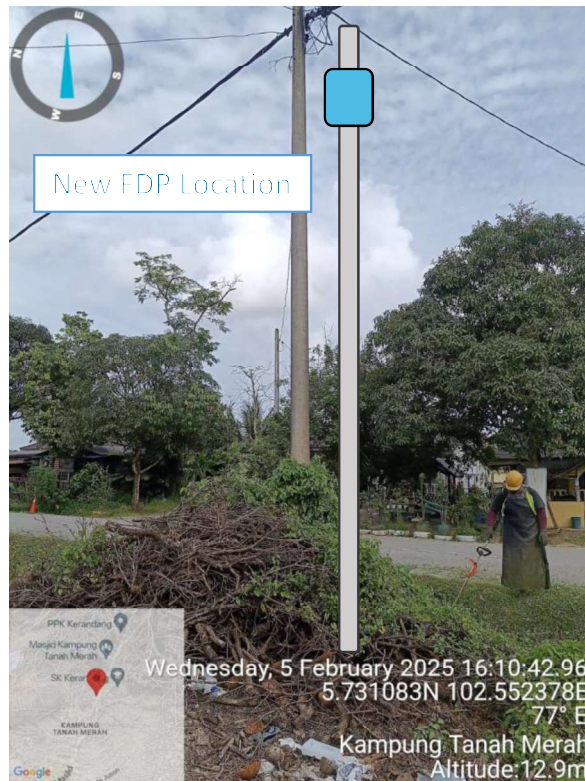
Legend:

 FDP Location

2.1 FDP Details and Illustration

| No | Info | Road/Location | Type | Lat/Long |
|----|----------|--|----------------|----------------------|
| 1 | New DP3A | HADAPAN LOT 1666 KG KERANDANG, 22000 JERTEH, TERENGGANU | JH_C015_DP015A | 5.731087, 102.552385 |

Propose Location



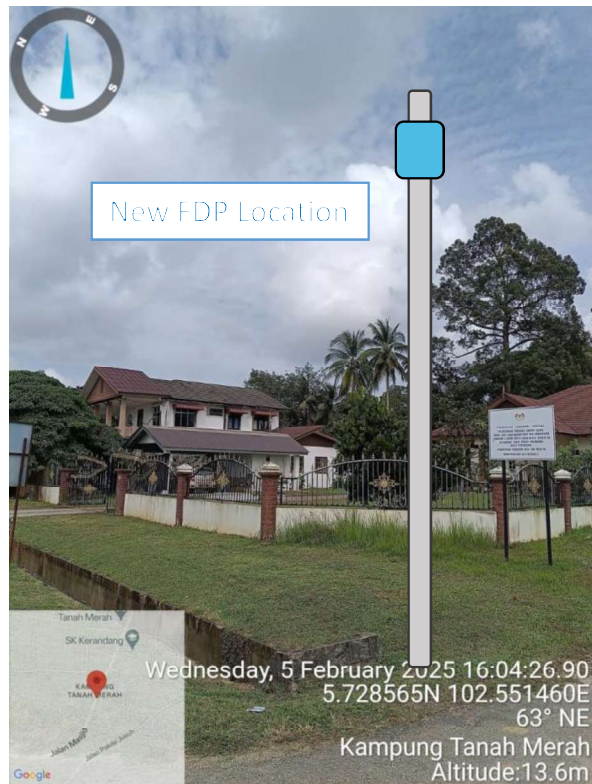
Legend:

 FDP Location

2.1 FDP Details and Illustration

| No | Info | Road/Location | Type | Lat/Long |
|----|----------|---|----------------|----------------------|
| 1 | New DP 4 | HADAPAN LOT 60903 KG KERANDANG, 22000 JERTEH, TERENGGANU | JH_C015_DP0015 | 5.728607, 102.551522 |

Propose Location



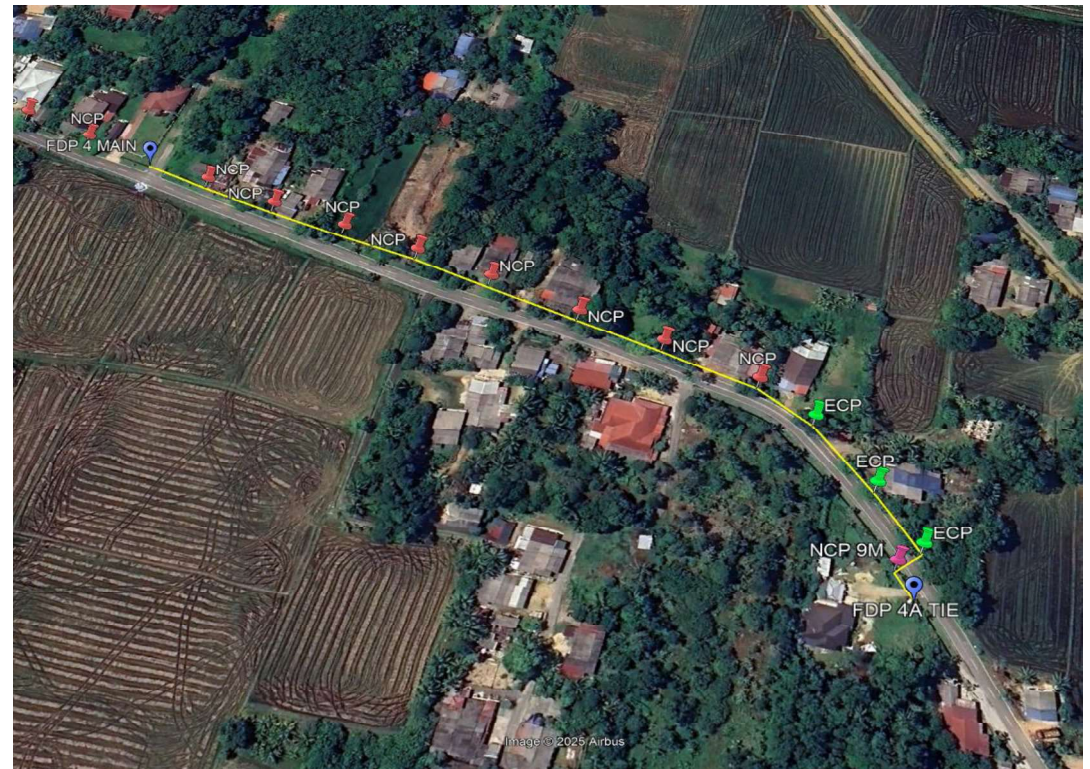
Legend:



2.1 FDP Details and Illustration

| No | Info | Road/Location | Type | Lat/Long |
|----|----------|--|----------------|----------------------|
| 1 | New DP4A | HADAPAN LOT 3069 KG KERANDANG, 22000 JERTEH, TERENGGANU | JH_C015_DP015A | 5.725712, 102.549701 |

Propose Location



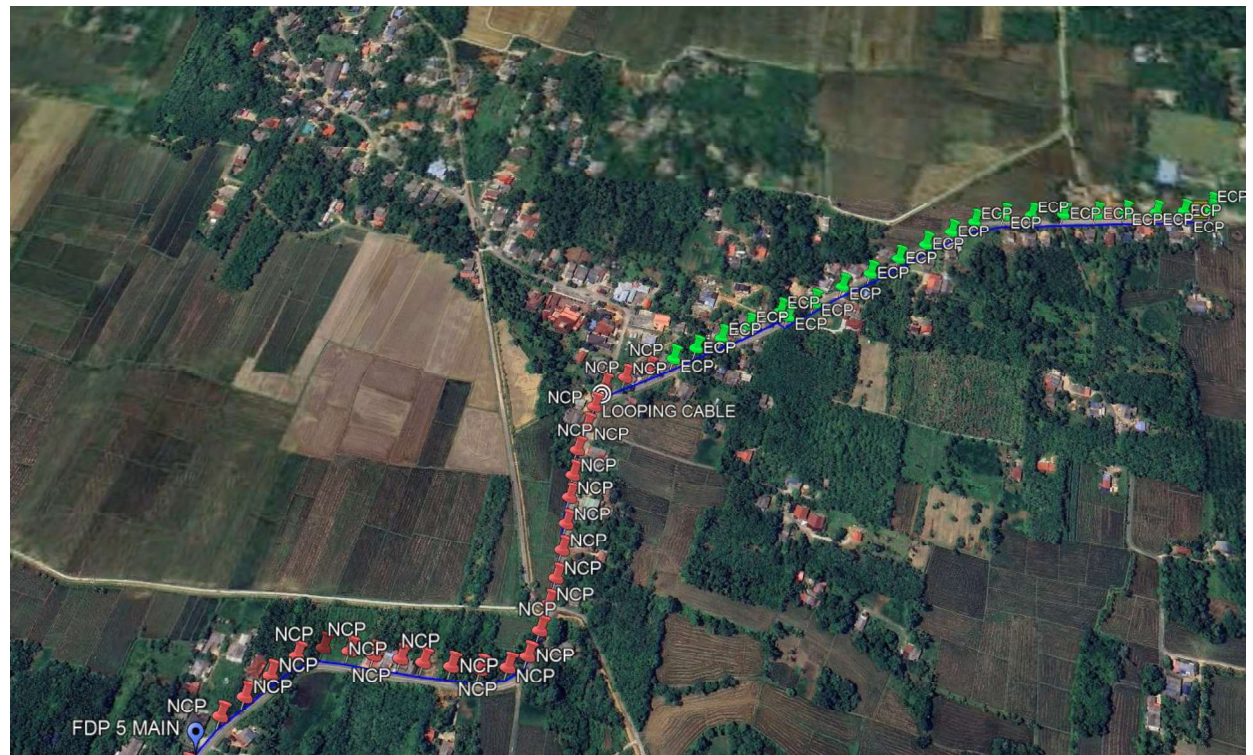
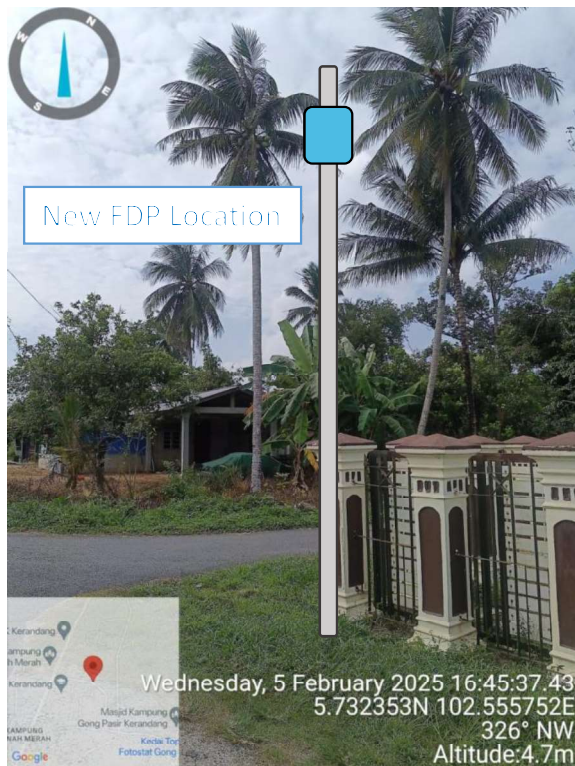
Legend:

 FDP Location

2.1 FDP Details and Illustration

| No | Info | Road/Location | Type | Lat/Long |
|----|----------|---|----------------|----------------------|
| 1 | New DP 5 | HADAPAN LOT 61152 KG KERANDANG, 22000 JERTEH, TERENGGANU | JH_C015_DP0015 | 5.732339, 102.555737 |

Propose Location



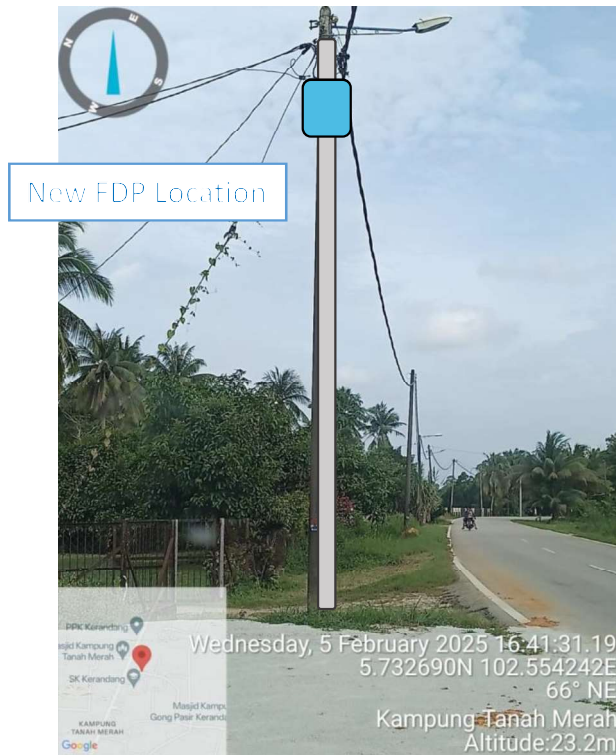
Legend:



2.1 FDP Details and Illustration

| No | Info | Road/Location | Type | Lat/Long |
|----|----------|--|----------------|----------------------|
| 1 | New DP5A | HADAPAN LOT 4857 KG KERANDANG, 22000 JERTEH, TERENGGANU | JH_C015_DP015A | 5.732690, 102.554062 |

Propose Location

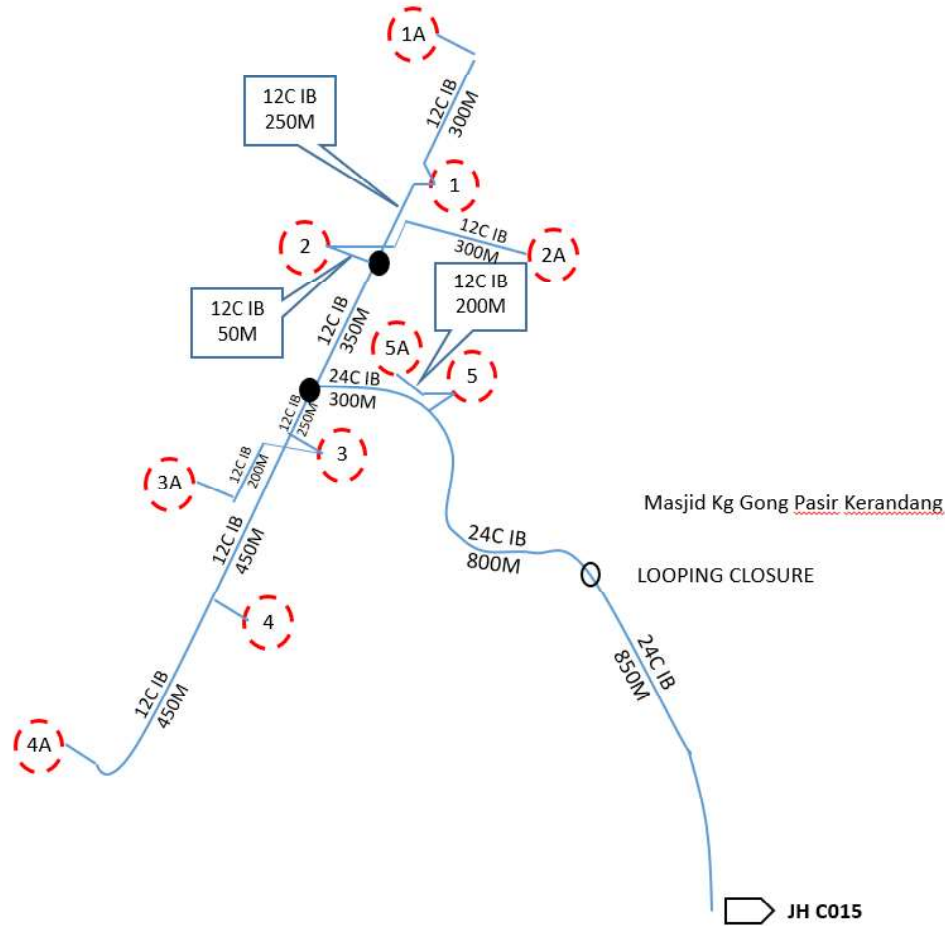


Legend:



FDP Location

2.3 Cable Plan & Straight-Line Drawing

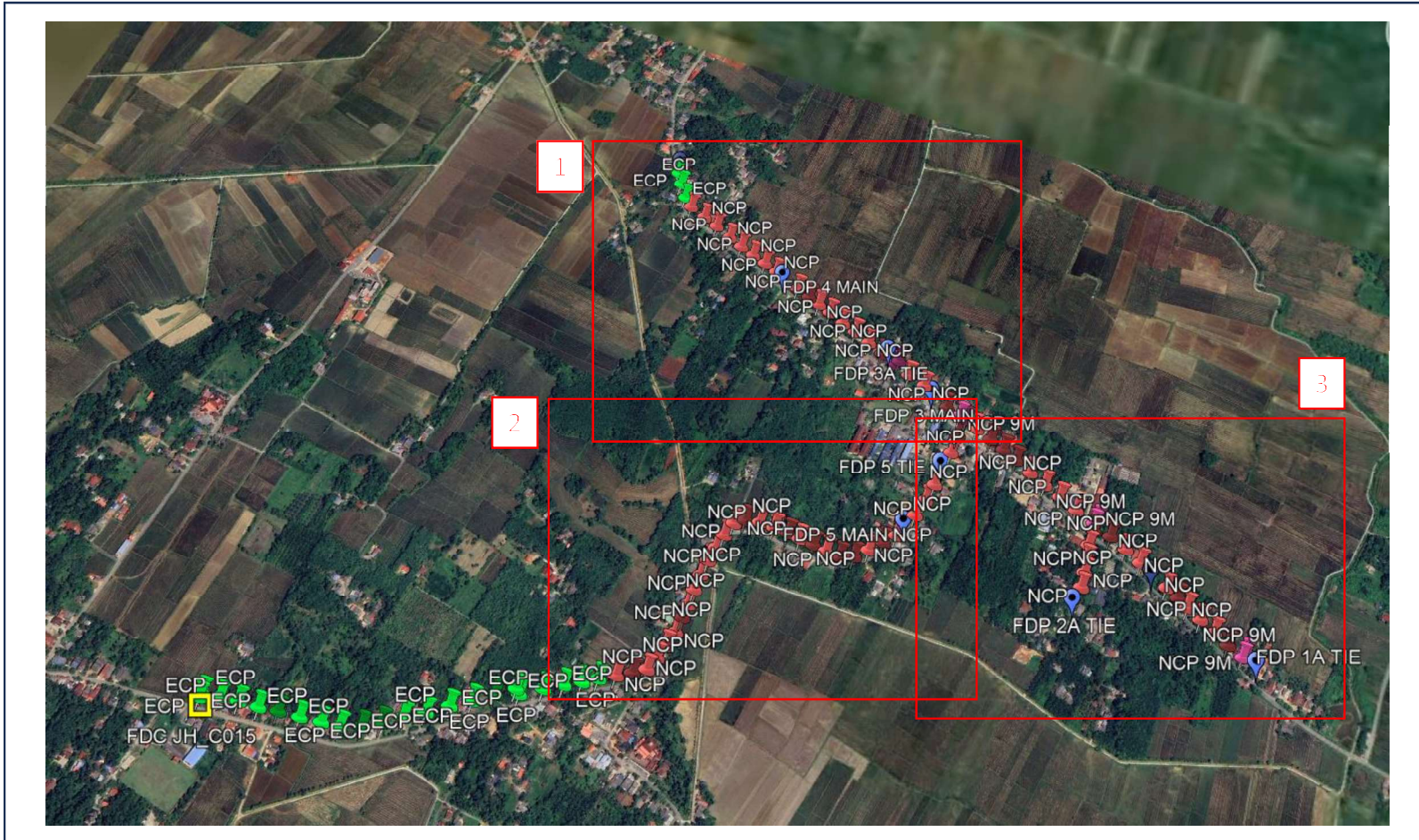


Legend:  Proposed FDP  Customer Premise  Proposed New Pole

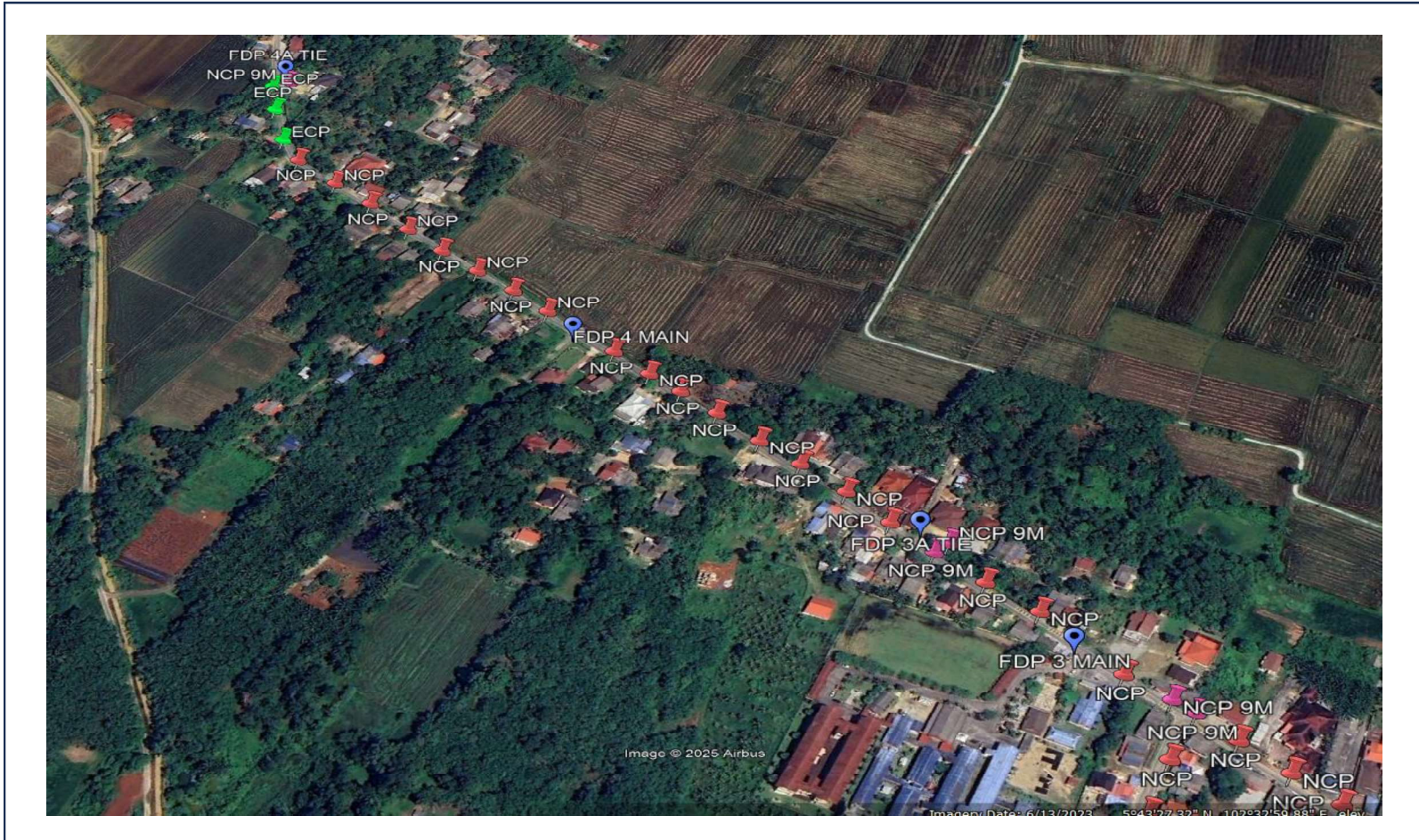
2.5 FDP Details – Normal Project




| No | Info | Type | Road/Location | Ports | Properties Covered | Remark |
|----|--------|---------|---|-------|--------------------|--------|
| 1 | DP0015 | On Pole | HADAPAN LOT 1115 KG KERANDANG, 22000 JERTEH, TERENGGANU | 8 | 8 | |
| 2 | DP015A | On Pole | HADAPAN LOT 2814 KG KERANDANG, 22000 JERTEH, TERENGGANU | 8 | 8 | |
| 3 | DP0016 | On Pole | HADAPAN PELADANG KG KERANDANG, 22000 JERTEH, TERENGGANU | 8 | 8 | |
| 4 | DP016A | On Pole | HADAPAN LOT 1168 KG KERANDANG, 22000 JERTEH, TERENGGANU | 8 | 8 | |
| 5 | DP0017 | On Pole | HADAPAN SK KERANDANG, 22000 JERTEH, TERENGGANU | 8 | 8 | |
| 6 | DP017A | On Pole | HADAPAN LOT 1666 KG KERANDANG, 22000 JERTEH, TERENGGANU | 8 | 8 | |
| 7 | DP0018 | On Pole | HADAPAN LOT 60903 KG KERANDANG, 22000 JERTEH, TERENGGANU | 8 | 8 | |
| 8 | DP018A | On Pole | HADAPAN LOT 3069 KG KERANDANG, 22000 JERTEH, TERENGGANU | 8 | 8 | |
| 9 | DP0019 | On Pole | HADAPAN LOT 61152 KG KERANDANG, 22000 JERTEH, TERENGGANU | 8 | 8 | |
| 10 | DP019A | On Pole | HADAPAN LOT 4857 KG KERANDANG, 22000 JERTEH, TERENGGANU | 8 | 8 | |
| | | | | | | |

3.1 New Pole Plan






3.1 New Pole Plan



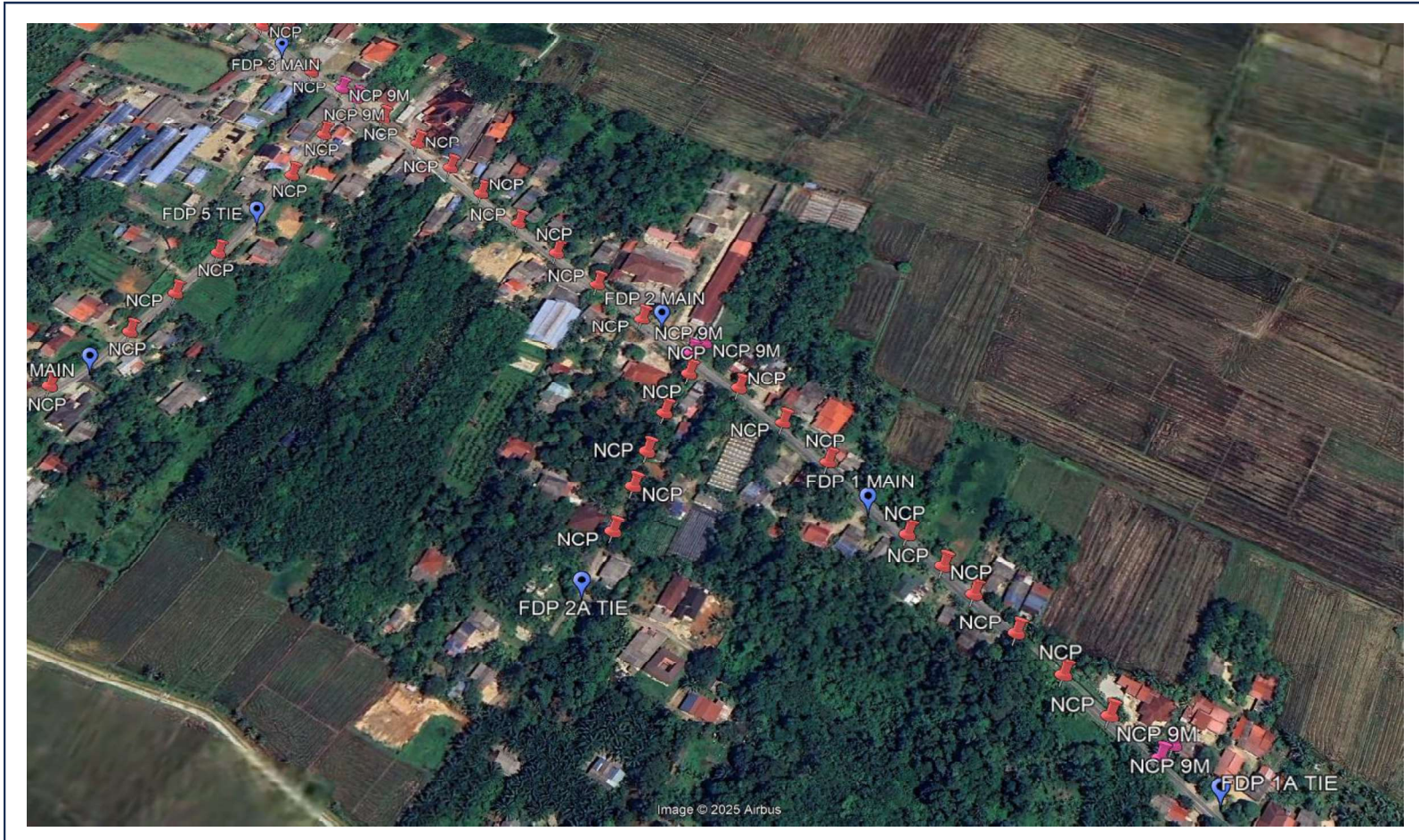
Legend:  POLE 9.0M  POLE 7.5M  EXISTING POLE

3.1 New Pole Plan



Legend:  POLE 9.0M  POLE 7.5M  EXISTING POLE

3.1 New Pole Plan



Legend:



POLE 9.0M



POLE 7.5M



EXISTING POLE

3.2 New Pole details

| No | Pole Type | GPS Coordinate |
|----|------------------------|----------------------|
| 1 | NEW CONCRETE 9.0M POLE | 5.725788, 102.549823 |
| 2 | NEW CONCRETE 7.5M POLE | 5.726231, 102.550572 |
| 3 | NEW CONCRETE 7.5M POLE | 5.728354, 102.551408 |
| 4 | NEW CONCRETE 7.5M POLE | 5.728077, 102.551299 |
| 5 | NEW CONCRETE 7.5M POLE | 5.727792, 102.551201 |
| 6 | NEW CONCRETE 7.5M POLE | 5.727502, 102.551098 |
| 7 | NEW CONCRETE 7.5M POLE | 5.727215, 102.550984 |
| 8 | NEW CONCRETE 9.0M POLE | 5.731215, 102.552489 |
| 9 | NEW CONCRETE 9.0M POLE | 5.731158, 102.552585 |
| 10 | NEW CONCRETE 7.5M POLE | 5.730864, 102.552440 |
| 11 | NEW CONCRETE 7.5M POLE | 5.730558, 102.552287 |
| 12 | NEW CONCRETE 7.5M POLE | 5.730240, 102.552157 |
| 13 | NEW CONCRETE 7.5M POLE | 5.729378, 102.551820 |
| 14 | NEW CONCRETE 7.5M POLE | 5.729146, 102.551730 |
| 15 | NEW CONCRETE 7.5M POLE | 5.728872, 102.551612 |
| 16 | NEW CONCRETE 7.5M POLE | 5.726880, 102.550831 |
| 17 | NEW CONCRETE 7.5M POLE | 5.726571, 102.550716 |
| 18 | NEW CONCRETE 7.5M POLE | 5.729647, 102.551926 |

3.2 New Pole details

| No | Pole Type | GPS Coordinate |
|----|------------------------|----------------------|
| 19 | NEW CONCRETE 7.5M POLE | 5.729956, 102.552059 |
| 20 | NEW CONCRETE 7.5M POLE | 5.731488, 102.552698 |
| 21 | NEW CONCRETE 7.5M POLE | 5.731824, 102.552801 |
| 22 | NEW CONCRETE 7.5M POLE | 5.732354, 102.553089 |
| 23 | NEW CONCRETE 9.0M POLE | 5.732627, 102.553178 |
| 24 | NEW CONCRETE 9.0M POLE | 5.732762, 102.553229 |
| 25 | NEW CONCRETE 9.0M POLE | 5.735550, 102.554307 |
| 26 | NEW CONCRETE 9.0M POLE | 5.735503, 102.554396 |
| 27 | NEW CONCRETE 7.5M POLE | 5.733007, 102.553335 |
| 28 | NEW CONCRETE 7.5M POLE | 5.733304, 102.553450 |
| 29 | NEW CONCRETE 7.5M POLE | 5.733584, 102.553562 |
| 30 | NEW CONCRETE 7.5M POLE | 5.733858, 102.553694 |
| 31 | NEW CONCRETE 7.5M POLE | 5.734172, 102.553838 |
| 32 | NEW CONCRETE 7.5M POLE | 5.734807, 102.554120 |
| 33 | NEW CONCRETE 7.5M POLE | 5.735147, 102.554263 |
| 34 | NEW CONCRETE 7.5M POLE | 5.734485, 102.553979 |
| 35 | NEW CONCRETE 7.5M POLE | 5.735579, 102.555711 |
| 36 | NEW CONCRETE 7.5M POLE | 5.735565, 102.555404 |

3.2 New Pole details

| No | Pole Type | GPS Coordinate |
|----|------------------------|----------------------|
| 37 | NEW CONCRETE 7.5M POLE | 5.735539, 102.555146 |
| 38 | NEW CONCRETE 7.5M POLE | 5.735521, 102.554851 |
| 39 | NEW CONCRETE 7.5M POLE | 5.735544, 102.554537 |
| 40 | NEW CONCRETE 7.5M POLE | 5.735848, 102.554546 |
| 41 | NEW CONCRETE 7.5M POLE | 5.736158, 102.554690 |
| 42 | NEW CONCRETE 7.5M POLE | 5.736470, 102.554843 |
| 43 | NEW CONCRETE 9.0M POLE | 5.738556, 102.555846 |
| 44 | NEW CONCRETE 9.0M POLE | 5.738513, 102.555933 |
| 45 | NEW CONCRETE 7.5M POLE | 5.738240, 102.555793 |
| 46 | NEW CONCRETE 7.5M POLE | 5.737974, 102.555654 |
| 47 | NEW CONCRETE 7.5M POLE | 5.737695, 102.555509 |
| 48 | NEW CONCRETE 7.5M POLE | 5.737433, 102.555367 |
| 49 | NEW CONCRETE 7.5M POLE | 5.737238, 102.555260 |
| 50 | NEW CONCRETE 7.5M POLE | 5.737008, 102.555137 |
| 51 | NEW CONCRETE 7.5M POLE | 5.732711, 102.553578 |
| 52 | NEW CONCRETE 7.5M POLE | 5.732692, 102.553958 |
| 53 | NEW CONCRETE 7.5M POLE | 5.732593, 102.554681 |
| 54 | NEW CONCRETE 7.5M POLE | 5.732525, 102.555048 |

3.2 New Pole details

| No | Pole Type | GPS Coordinate |
|----|------------------------|-----------------------|
| 55 | NEW CONCRETE 7.5M POLE | 5.732436, 102.555395 |
| 56 | NEW CONCRETE 7.5M POLE | 5.732232, 102.555897 |
| 57 | NEW CONCRETE 7.5M POLE | 5.731857, 102.556333 |
| 58 | NEW CONCRETE 7.5M POLE | 5.731647, 102.556545 |
| 59 | NEW CONCRETE 7.5M POLE | 5.731407, 102.556648 |
| 60 | NEW CONCRETE 7.5M POLE | 5.7311456, 102.556632 |
| 61 | NEW CONCRETE 7.5M POLE | 5.730899, 102.556604 |
| 62 | NEW CONCRETE 7.5M POLE | 5.730633, 102.556589 |
| 63 | NEW CONCRETE 7.5M POLE | 5.730131, 102.556548 |
| 64 | NEW CONCRETE 7.5M POLE | 5.729853, 102.556545 |
| 65 | NEW CONCRETE 7.5M POLE | 5.729592, 102.556591 |
| 66 | NEW CONCRETE 7.5M POLE | 5.729417, 102.556718 |
| 67 | NEW CONCRETE 7.5M POLE | 5.729281, 102.557269 |
| 68 | NEW CONCRETE 7.5M POLE | 5.729233, 102.557547 |
| 69 | NEW CONCRETE 7.5M POLE | 5.729207, 102.557850 |
| 70 | NEW CONCRETE 7.5M POLE | 5.729196, 102.558146 |
| 71 | NEW CONCRETE 7.5M POLE | 5.729194, 102.558445 |
| 72 | NEW CONCRETE 7.5M POLE | 5.729172, 102.559002 |

3.2 New Pole details

| No | Pole Type | GPS Coordinate |
|----|------------------------|----------------------|
| 73 | NEW CONCRETE 7.5M POLE | 5.729102, 102.559292 |
| 74 | NEW CONCRETE 7.5M POLE | 5.729042, 102.559544 |
| 75 | NEW CONCRETE 7.5M POLE | 5.728958, 102.559797 |
| 76 | NEW CONCRETE 7.5M POLE | 5.728742, 102.559940 |
| 77 | NEW CONCRETE 7.5M POLE | 5.729185, 102.558705 |
| 78 | NEW CONCRETE 7.5M POLE | 5.729331, 102.556991 |
| 79 | NEW CONCRETE 7.5M POLE | 5.730407, 102.556568 |
| 80 | NEW CONCRETE 7.5M POLE | 5.732050, 102.556103 |
| 81 | NEW CONCRETE 7.5M POLE | 5.728496, 102.560080 |
| 82 | NEW CONCRETE 7.5M POLE | 5.738843, 102.556018 |
| 83 | NEW CONCRETE 7.5M POLE | 5.735275, 102.554215 |
| 84 | NEW CONCRETE 7.5M POLE | 5.731054, 102.552410 |
| 85 | NEW CONCRETE 7.5M POLE | 5.725726, 102.549709 |
| 86 | NEW CONCRETE 7.5M POLE | 5.732669, 102.554318 |
| 87 | NEW CONCRETE 7.5M POLE | 5.735579, 102.556070 |
| 88 | NEW CONCRETE 7.5M POLE | 5.732370, 102.555667 |
| 89 | NEW CONCRETE 7.5M POLE | 5.732079, 102.552952 |
| 90 | NEW CONCRETE 7.5M POLE | 5.736775, 02.555012 |
| 91 | NEW CONCRETE 7.5M POLE | 5.728592, 102.551515 |