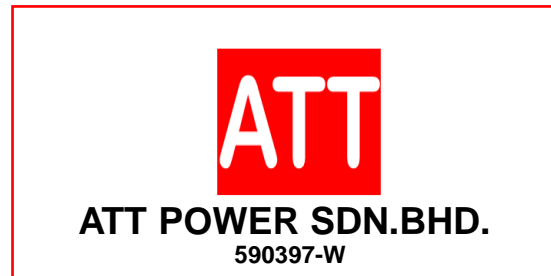


Technical Proposal for TM Project



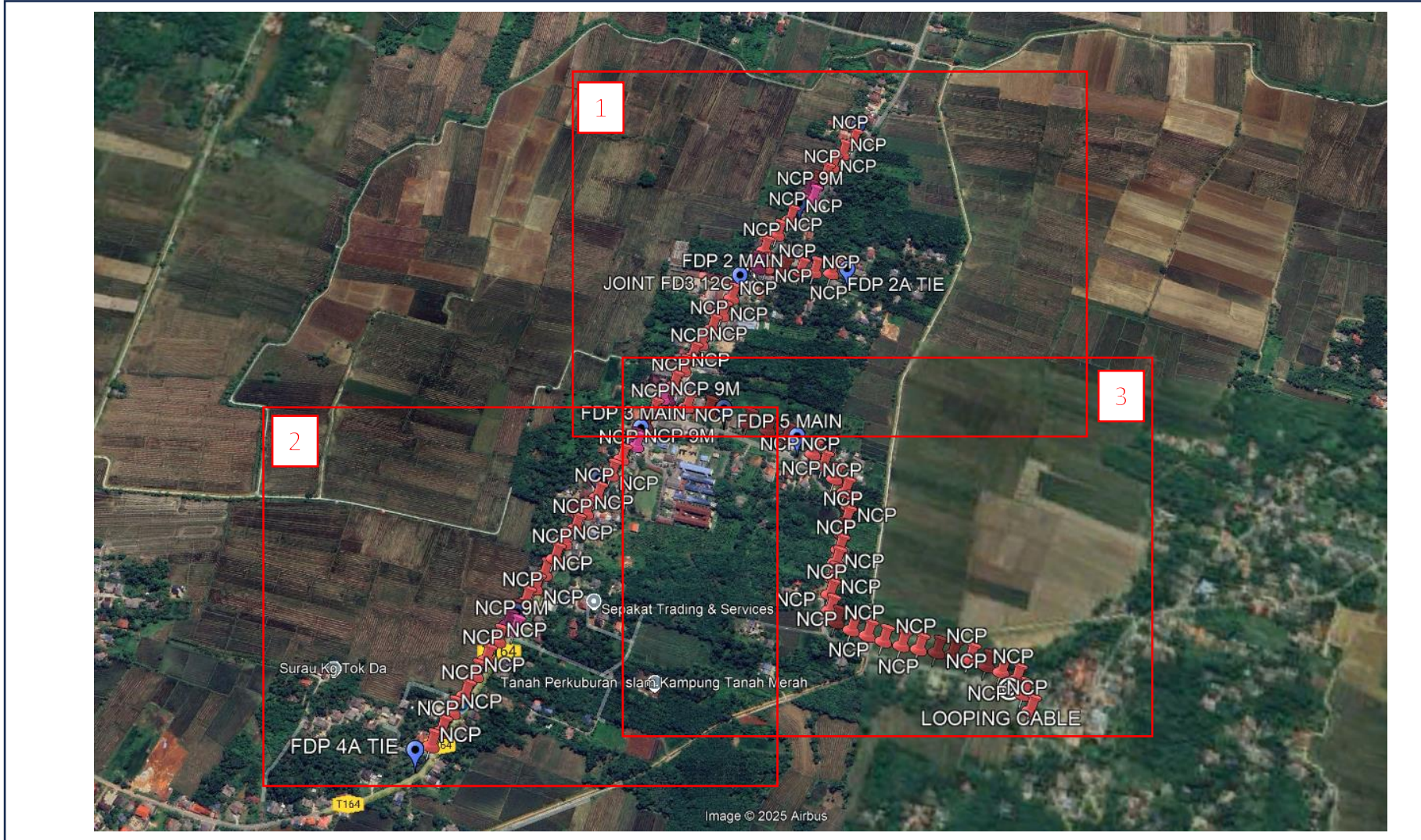
| | |
|------------------------------|--------------------------------------|
| Project Description: | USP MC2021 FTTH (JH) KG KERANDANG |
| Project Number: | TMKA/250045 |
| TM Node | JH (JERTEH) |
| Region | EASTERN |
| NE ID | JH_C015 |
| Total Poles 9Meters | 9 |
| Total Poles 7.5Meters | 82 |
| PF (%) | |
| RFSI Date | 31 APRIL 2025 |
| GPS Coordinate | 5.722675, 102.562961 |

| | |
|----------------------|-------------------|
| Prepared by: | HAFIZI AZMI |
| Company Name: | ATT POWER SDN BHD |
| Date: | 8/02/2025 |
| TP Revision: | 0 |

2.5 FDP Details – Normal Project

| No | Info | Type | Road/Location | Ports | Properties Covered | Remark |
|----|--------|---------|---|-------|--------------------|--------|
| 1 | DP0015 | On Pole | HADAPAN LOT 1115 KG KERANDANG, 22000 JERTEH, TERENGGANU | 8 | 8 | |
| 2 | DP015A | On Pole | HADAPAN LOT 2814 KG KERANDANG, 22000 JERTEH, TERENGGANU | 8 | 8 | |
| 3 | DP0016 | On Pole | HADAPAN PELADANG KG KERANDANG, 22000 JERTEH, TERENGGANU | 8 | 8 | |
| 4 | DP016A | On Pole | HADAPAN LOT 1168 KG KERANDANG, 22000 JERTEH, TERENGGANU | 8 | 8 | |
| 5 | DP0017 | On Pole | HADAPAN SK KERANDANG, 22000 JERTEH, TERENGGANU | 8 | 8 | |
| 6 | DP017A | On Pole | HADAPAN LOT 1666 KG KERANDANG, 22000 JERTEH, TERENGGANU | 8 | 8 | |
| 7 | DP0018 | On Pole | HADAPAN LOT 60903 KG KERANDANG, 22000 JERTEH, TERENGGANU | 8 | 8 | |
| 8 | DP018A | On Pole | HADAPAN LOT 3069 KG KERANDANG, 22000 JERTEH, TERENGGANU | 8 | 8 | |
| 9 | DP0019 | On Pole | HADAPAN LOT 61152 KG KERANDANG, 22000 JERTEH, TERENGGANU | 8 | 8 | |
| 10 | DP019A | On Pole | HADAPAN LOT 4857 KG KERANDANG, 22000 JERTEH, TERENGGANU | 8 | 8 | |
| | | | | | | |

3.1 New Pole Plan



Legend:



POLE 9.0M



POLE 7.5M

3.1 New Pole Plan



Legend:



POLE 9.0M

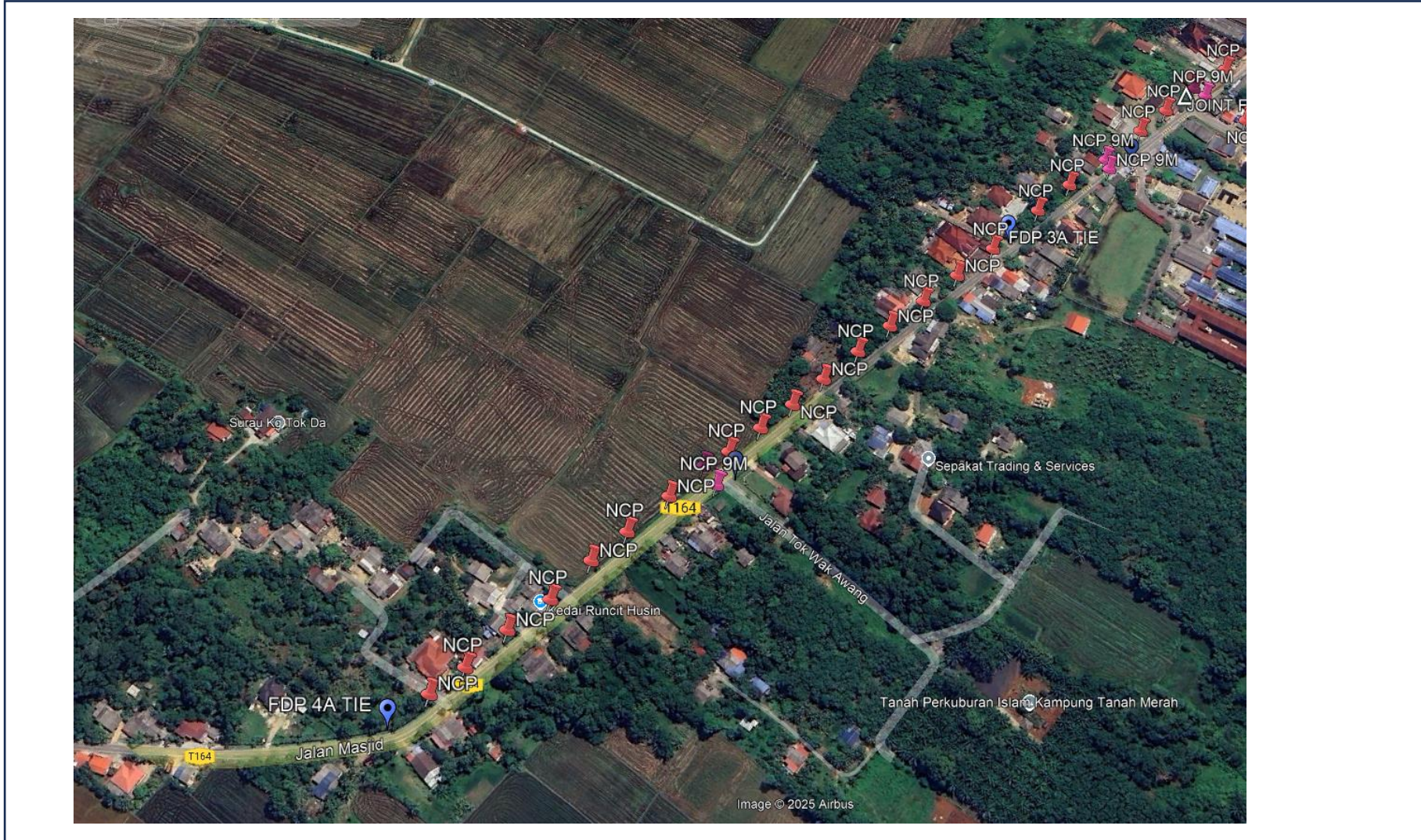


POLE 7.5M



EXISTING POLE

3.1 New Pole Plan



Legend:



POLE 9.0M



POLE 7.5M



EXISTING POLE

3.1 New Pole Plan



Legend:



POLE 9.0M



POLE 7.5M



EXISTING POLE