

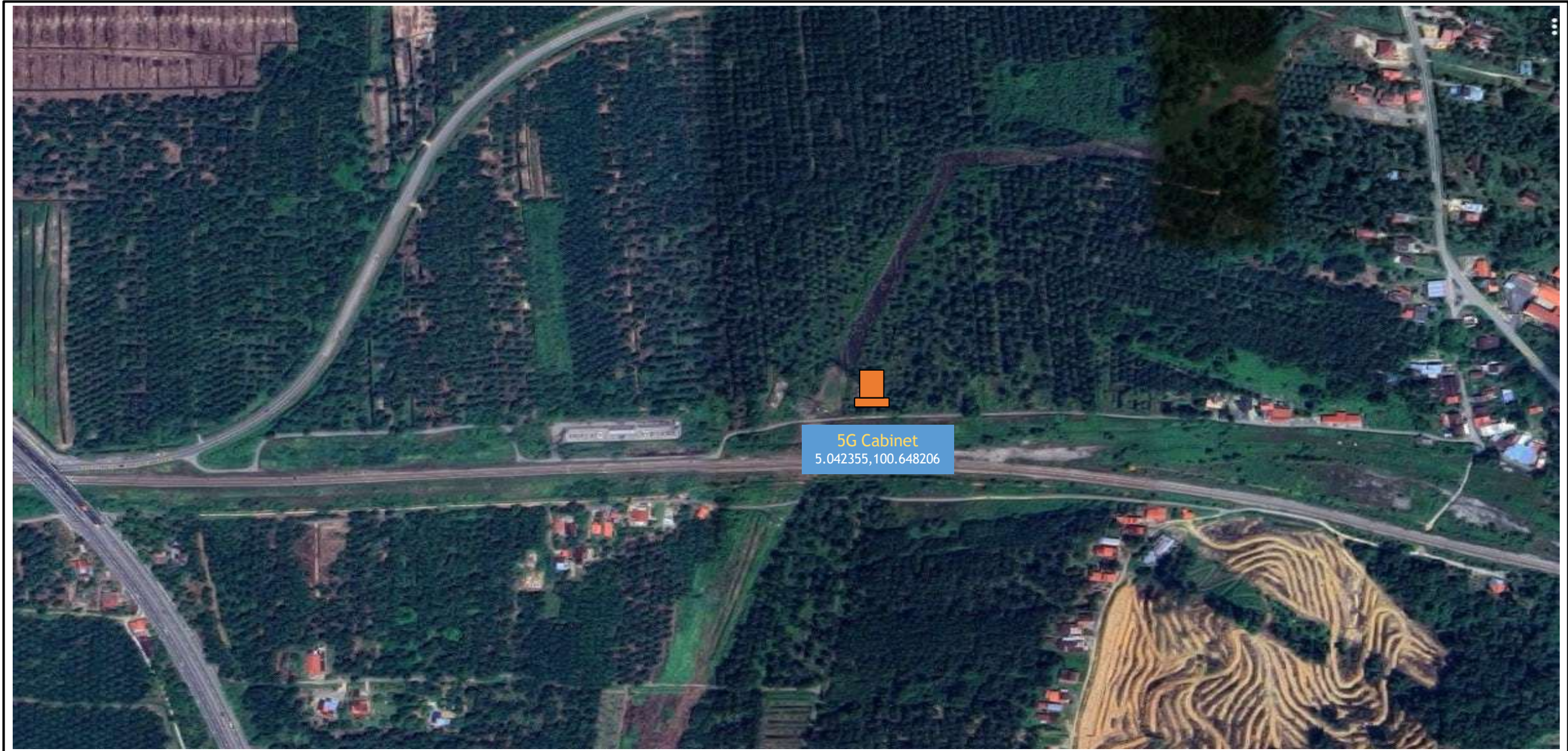
Technical Proposal for TM Project




Project Description:	UM5G FOC BS_FXX NID NGBH - JAPI
Project Number:	TMNA/253337
TM Node	BS
Region	NORTHERN
SITE ID	JAPI
RFSI Date	28 FEBRUARY 2026
GPS Coordinate	5.042355,100.648206
Main Fiber Info	F_21
Required Permit OSA	No
Landowner permit/issue	YES
Required IW	No
Floor Involved for IW	NO

Prepared by:	KHAIRUL ASUAN
Company Name:	PROSERINS TECHNOLOGY SDN. BHD.
Date:	28/11/2025
TP Revision:	0

1.1 5G Cabinet Map Location



Legend:  5G Cabinet Location

1.2 5G Cabinet Details and Illustration

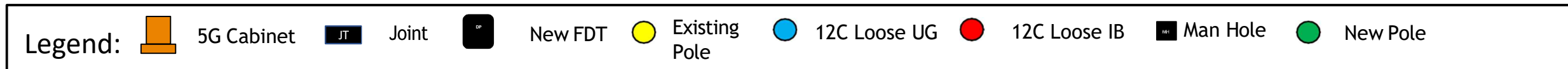
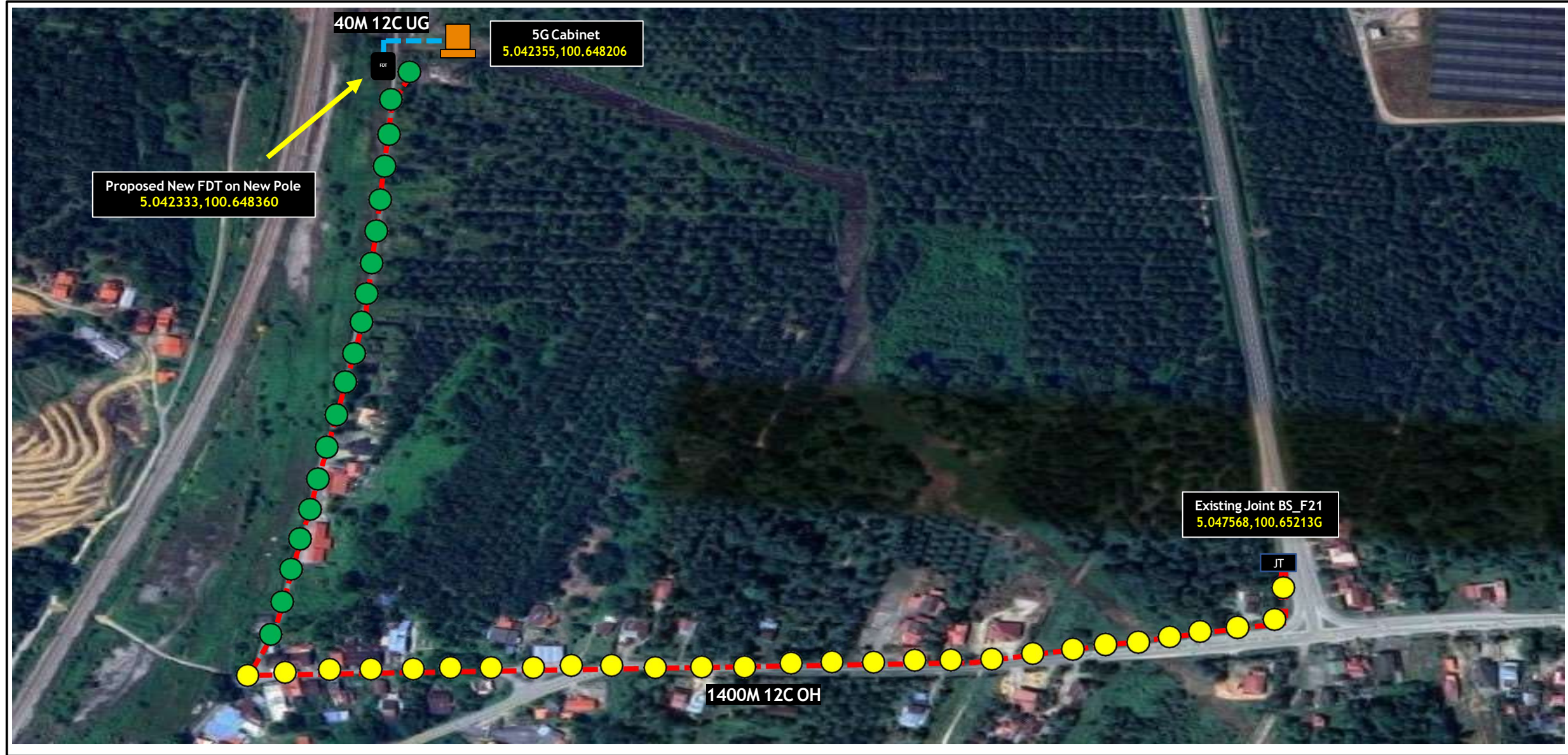
No	Info	Road/Location	Type	Lat/Long
1	5G CABINET	BAGAN SERAI 34400 PERAK	TOWER/CABINET	5.042355,100.648206

Propose Location



Legend:  5G Cabinet Location

2.1 Details Fiber Route To The Site



2.1 Detail Fiber Route to the site



5G Cabinet



Joint



New FDT



Tower



12C Loose UG



12C Loose IB



Man Hole

2.1 Detail Fiber Route to the site



5G Cabinet



Joint



New FDT



Tower



12C Loose UG



12C Loose IB



Man Hole



28 Nov 2025 12:16:29
5.047568511217833N 100.65213938243687E
90a A111
Kampung Masjid
Bagan Serai
Perak
Altitude: 3.0msnm
Speed: 0.0km/h

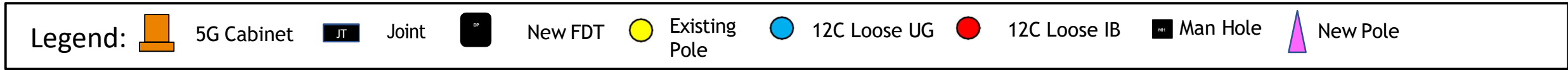
Existing Joint BS_F21
5.047568, 100.65213G



28 Nov 2025 11:00:30
5.042333 953984N 100.64836073666811E
Bagan Serai
Perak
Altitude: 17.0msnm
Speed: 0.0km/h

Proposed New FDT
5.042333, 100.648360

3.1 New Pole Plan



3.2 New Pole details

No	POLE ID	Pole Type	GPS Coordinate
1	1	Pole Concrete 7.5M	5.042333,100.648360
2	2	Pole Concrete 7.5M	5.042209,100.648307
3	3	Pole Concrete 7.5M	5.042164,100.648608
4	4	Pole Concrete 7.5M	5.042188,100.648852
5	5	Pole Concrete 7.5M	5.042191,100.649052
6	6	Pole Concrete 7.5M	5.042192,100.649374
7	7	Pole Concrete 7.5M	5.042201,100.649623
8	8	Pole Concrete 7.5M	5.042192,100.649859
9	9	Pole Concrete 7.5M	5.042211,100.650075
10	10	Pole Concrete 7.5M	5.042176,100.650358
11	11	Pole Concrete 7.5M	5.042159,100.650615
12	12	Pole Concrete 7.5M	5.042142,100.650837
13	13	Pole Concrete 7.5M	5.042108,100.651093
14	14	Pole Concrete 7.5M	5.042104,100.651348
15	15	Pole Concrete 7.5M	5.042089,100.651620

