

 <p>GAS MALAYSIA DISTRIBUTION <small>A Member of Gas Malaysia Berhad</small></p>	<p>TO UNDERTAKE CATHODIC PROTECTION (CP) WORKS FOR IPOH BRANCH OFFICE (IPOBO)</p>	 <p>ElectroCorr</p>
	<p>Peta Penandaan Lokasi dan Gambar Lokasi</p>	<p>P225-015</p>

1. Test Post ID: SP-LHT/FCP/006
Coordinates: 4.53955 N, 101.05686 E
Road: Jalan Paser Puteh



Location Picture:



 <p>GAS MALAYSIA DISTRIBUTION <small>A Member of Gas Malaysia Berhad</small></p>	<p>TO UNDERTAKE CATHODIC PROTECTION (CP) WORKS FOR IPOH BRANCH OFFICE (IPOBO)</p>	 <p>ElectroCorr</p>
	<p>Peta Penandaan Lokasi dan Gambar Lokasi</p>	<p>P225-015</p>

- 2. Test Post ID: SP-LHT/FCP/013
Coordinates: 4.54072 N, 101.07025 E
Road: Jalan Simpang Pulai-Lahat
Remark: Opposite Big Apple



Location Picture:

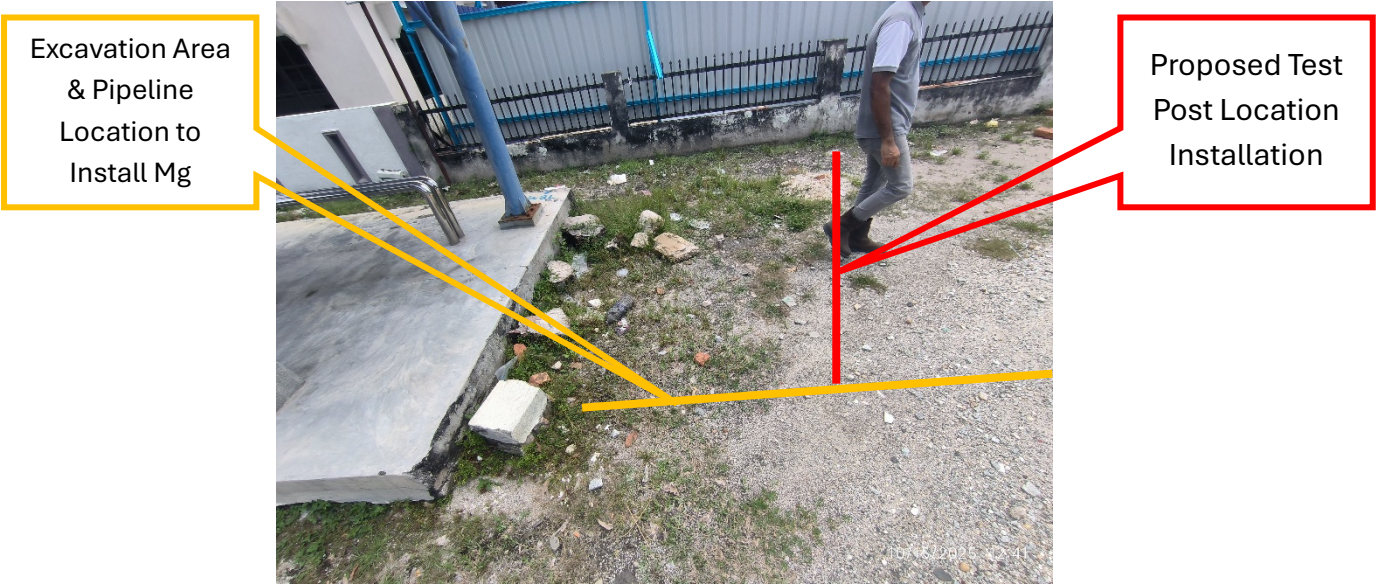


 <p>GAS MALAYSIA DISTRIBUTION <small>A Member of Gas Malaysia Berhad</small></p>	<p>TO UNDERTAKE CATHODIC PROTECTION (CP) WORKS FOR IPOH BRANCH OFFICE (IPOBO)</p>	 <p>ElectroCorr</p>
	<p>Peta Penandaan Lokasi dan Gambar Lokasi</p>	<p>P225-015</p>

- 3. Test Post ID: SP-LHT/FCP/014
Coordinates: 4.53705 N, 101.06925 E
Road: Jalan Simpang Pulai-Lahat (Before Klinik Kesihatan Pengkalan Pegoh)



Location Picture:



 <p>GAS MALAYSIA DISTRIBUTION <small>A Member of Gas Malaysia Berhad</small></p>	<p>TO UNDERTAKE CATHODIC PROTECTION (CP) WORKS FOR IPOH BRANCH OFFICE (IPOBO)</p>	 <p>ElectroCorr</p>
	<p>Peta Penandaan Lokasi dan Gambar Lokasi</p>	<p>P225-015</p>

- 4. Test Post ID: SP-LHT/FCP/023
Coordinates: 4.52041 N, 101.07908 E
Road: Jalan Simpang Pulai-Lahat (After Kilang Aalborg)

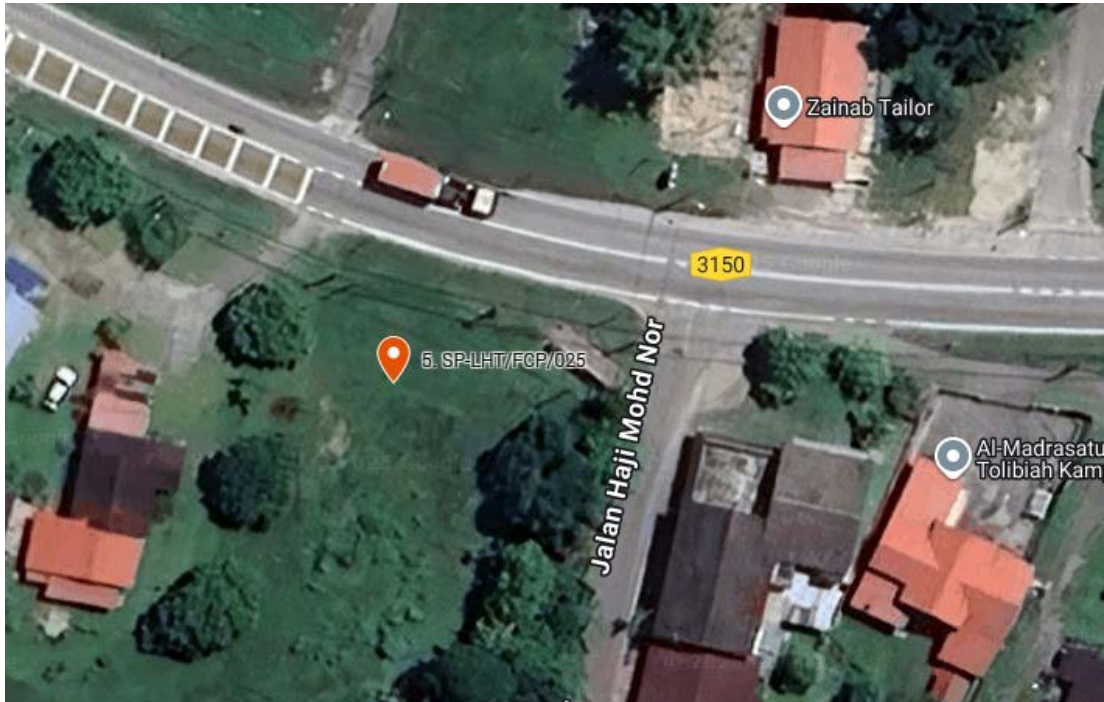


Location Picture:

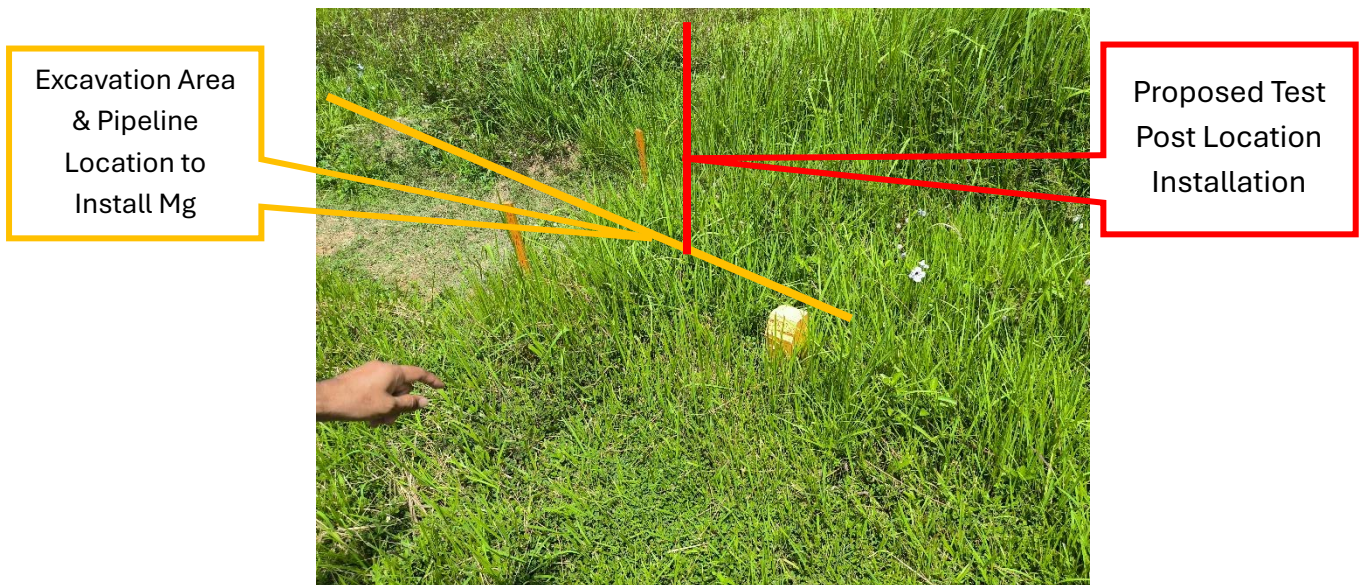


 <p>GAS MALAYSIA DISTRIBUTION <small>A Member of Gas Malaysia Berhad</small></p>	<p>TO UNDERTAKE CATHODIC PROTECTION (CP) WORKS FOR IPOH BRANCH OFFICE (IPOBO)</p>	 <p>ElectroCorr</p>
	<p>Peta Penandaan Lokasi dan Gambar Lokasi</p>	<p>P225-015</p>

- 5. Test Post ID: SP-LHT/FCP/025
Coordinates: 4.51708 N, 101.082 E
Road: Jalan Simpang Pulai-Lahat (Before Dewan Orang Ramai Changkat Larang)



Location Picture:

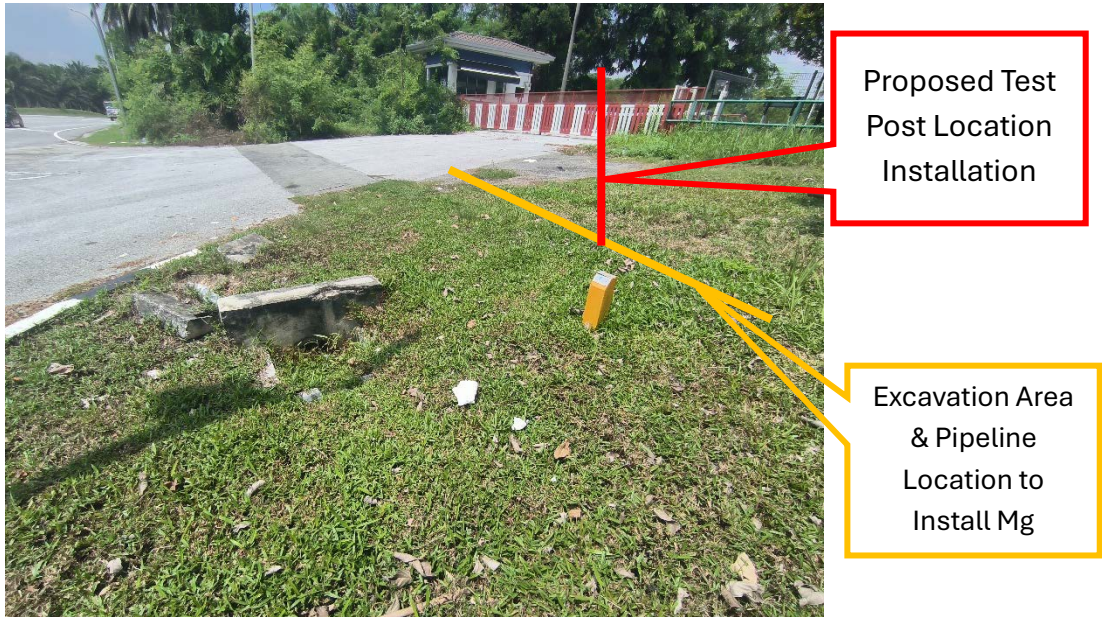


 <p>GAS MALAYSIA DISTRIBUTION <small>A Member of Gas Malaysia Berhad</small></p>	<p>TO UNDERTAKE CATHODIC PROTECTION (CP) WORKS FOR IPOH BRANCH OFFICE (IPOBO)</p>	 <p>ElectroCorr</p>
	<p>Peta Penandaan Lokasi dan Gambar Lokasi</p>	<p>P225-015</p>

- 6. Test Post ID: SP-LHT/FCP/030
Coordinates: 4.51483 N, 101.09438 E
Road: Jalan Simpang Pulai-Lahat (Before Guard House Taman Botani)



Location Picture:



 <p>GAS MALAYSIA DISTRIBUTION <small>A Member of Gas Malaysia Berhad</small></p>	<p>TO UNDERTAKE CATHODIC PROTECTION (CP) WORKS FOR IPOH BRANCH OFFICE (IPOBO)</p>	 <p>ElectroCorr</p>
	<p>Peta Penandaan Lokasi dan Gambar Lokasi</p>	<p>P225-015</p>

7. Test Post ID: SP/LHT/FCP/033
Coordinates: 4.51638 N, 101.10172 E
Road: Jalan Simpang Pulai-Lahat



Location Picture:



 <p>GAS MALAYSIA DISTRIBUTION <small>A Member of Gas Malaysia Berhad</small></p>	<p>TO UNDERTAKE CATHODIC PROTECTION (CP) WORKS FOR IPOH BRANCH OFFICE (IPOBO)</p>	 <p>ElectroCorr</p>
	<p>Peta Penandaan Lokasi dan Gambar Lokasi</p>	<p>P225-015</p>

- 8. Test Post ID: LHT/FCP/005
Coordinates: 4.51658 N, 101.03061E
Road: Jalan Lahat



Location Picture:



Proposed Test Post Location Installation

Excavation Area & Pipeline Location to Install Mg

 <p>GAS MALAYSIA DISTRIBUTION <small>A Member of Gas Malaysia Berhad</small></p>	<p>TO UNDERTAKE CATHODIC PROTECTION (CP) WORKS FOR IPOH BRANCH OFFICE (IPOBO)</p>	 <p>ElectroCorr</p>
	<p>Peta Penandaan Lokasi dan Gambar Lokasi</p>	<p>P225-015</p>

- 9. Test Post ID: LHT/FCP/009
Coordinate: 4.52786, 101.03111 E
Road: Jalan Lahat (Nearby TNB pole No.44 (33 kV))




Location Picture:



Proposed Test Post Location Installation

Excavation Area & Pipeline Location to Install Mg

 <p>GAS MALAYSIA DISTRIBUTION <small>A Member of Gas Malaysia Berhad</small></p>	<p>TO UNDERTAKE CATHODIC PROTECTION (CP) WORKS FOR IPOH BRANCH OFFICE (IPOBO)</p>	 <p>ElectroCorr</p>
	<p>Peta Penandaan Lokasi dan Gambar Lokasi</p>	<p>P225-015</p>

10. Test Post ID: LHT/FCP/013
Coordinate: 4.53666 N, 101.03463 E
Road: Jalan Lahat (Opposite of Jasmine Food Industry)



Location Picture:

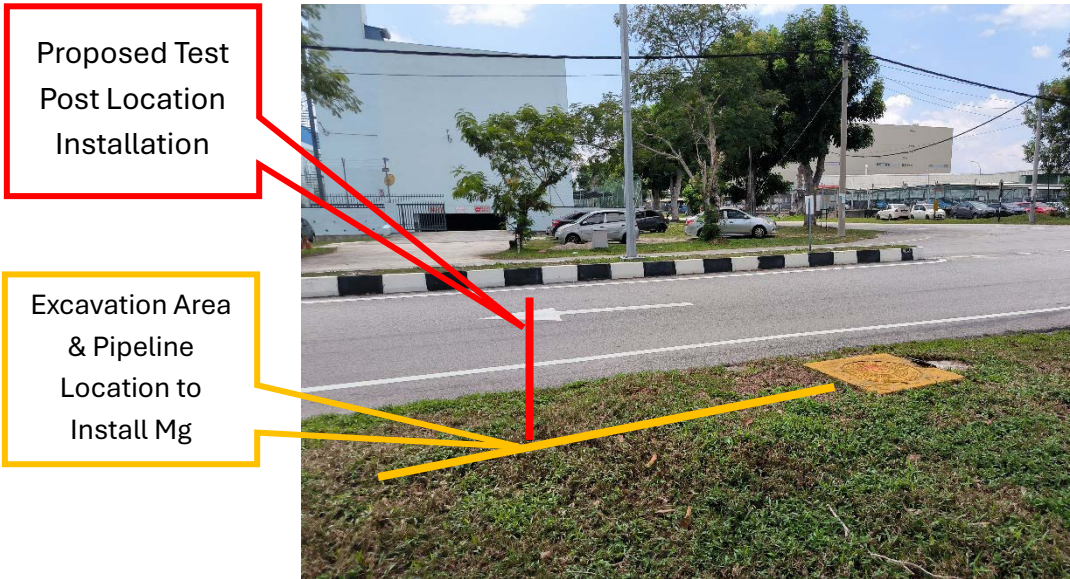


 <p>GAS MALAYSIA DISTRIBUTION <small>A Member of Gas Malaysia Berhad</small></p>	<p>TO UNDERTAKE CATHODIC PROTECTION (CP) WORKS FOR IPOH BRANCH OFFICE (IPOBO)</p>	 <p>ElectroCorr</p>
	<p>Peta Penandaan Lokasi dan Gambar Lokasi</p>	<p>P225-015</p>

11. Test Post ID: BMB/FCP/101
Coordinate: 4.46141 N, 101.00269 E
Road: Jalan Bemban (Nearby Valve Chamber no. BMB/SV/4/SGM1)

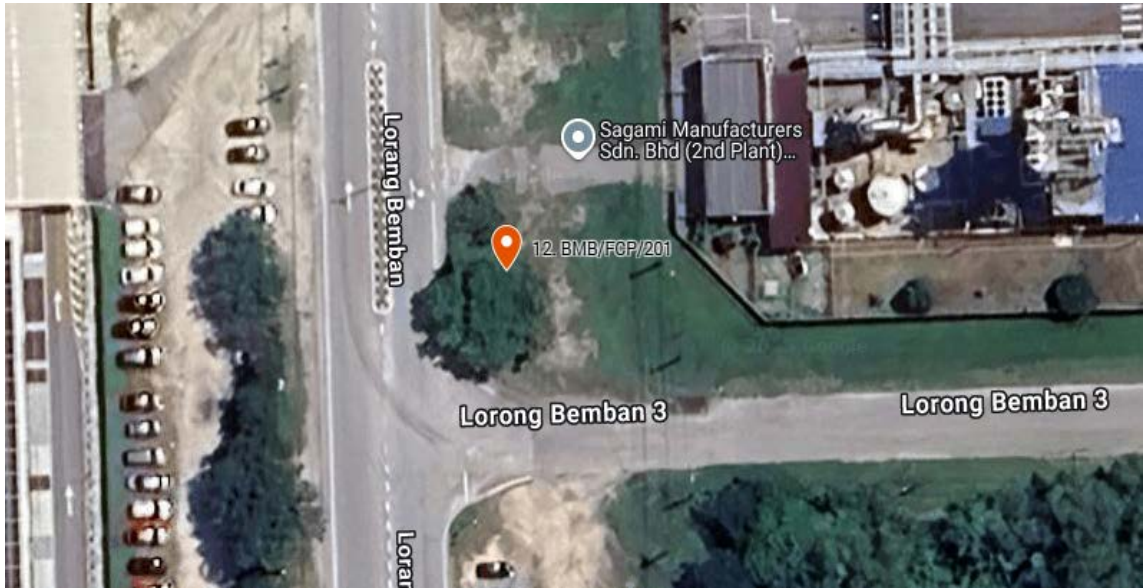


Location Picture:



 <p>GAS MALAYSIA DISTRIBUTION A Member of Gas Malaysia Berhad</p>	<p>TO UNDERTAKE CATHODIC PROTECTION (CP) WORKS FOR IPOH BRANCH OFFICE (IPOBO)</p>	 <p>ElectroCorr</p>
	<p>Peta Penandaan Lokasi dan Gambar Lokasi</p>	<p>P225-015</p>

12. Test Post ID: BMB/FCP/201
Coordinate: 4.46263 N, 101.00269 E
Road: Jalan Bemban (Infront of Sagami - 2nd Plant)



Location Picture:



Pigeon Hole Type
Test Post to be
Replace with
Bollard Pole Type
Test Post

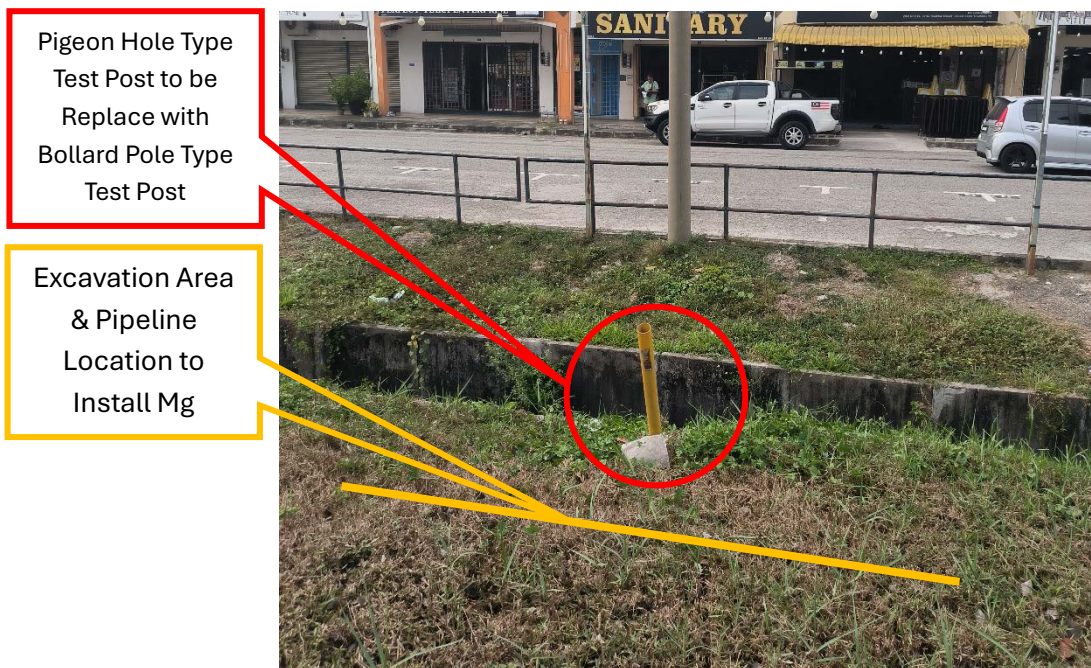
Excavation Area
& Pipeline
Location to
Install Mg

 <p>GAS MALAYSIA DISTRIBUTION <small>A Member of Gas Malaysia Berhad</small></p>	<p>TO UNDERTAKE CATHODIC PROTECTION (CP) WORKS FOR IPOH BRANCH OFFICE (IPOBO)</p>	 <p>ElectroCorr</p>
	<p>Peta Penandaan Lokasi dan Gambar Lokasi</p>	<p>P225-015</p>

13. Test Post ID: SP-LHT/FCP/010
Coordinate: 4.54118 N, 101.06397 E
Road: Jalan Pasir Puteh
Remark: Infront of LNY Station



Location Picture:



 <p>GAS MALAYSIA DISTRIBUTION <small>A Member of Gas Malaysia Berhad</small></p>	<p>TO UNDERTAKE CATHODIC PROTECTION (CP) WORKS FOR IPOH BRANCH OFFICE (IPOBO)</p>	 <p>ElectroCorr</p>
	<p>Peta Penandaan Lokasi dan Gambar Lokasi</p>	<p>P225-015</p>

14. Test Post ID: BG/FCP/015
Coordinate: 4.48636 N, 101.01594 E
Road: Ipoh-Lumut Highway (Infront to Kedai Papan & Logam Lit Seng)



Location Picture:



Proposed Test
Post Location
Installation

Excavation Area
& Pipeline
Location to
Install Mg

 <p>GAS MALAYSIA DISTRIBUTION A Member of Gas Malaysia Berhad</p>	<p>TO UNDERTAKE CATHODIC PROTECTION (CP) WORKS FOR IPOH BRANCH OFFICE (IPOBO)</p>	 <p>ElectroCorr</p>
	<p>Peta Penandaan Lokasi dan Gambar Lokasi</p>	<p>P225-015</p>

15. Test Post ID: SP-LHT/FCP/012
 Coordinate: 4.54247 N, 101.06915 E
 Road: Jalan Pasir Puteh
 Remark: Beside Tesco Station 18



Location Gambar:



 <p>GAS MALAYSIA DISTRIBUTION <small>A Member of Gas Malaysia Berhad</small></p>	<p>TO UNDERTAKE CATHODIC PROTECTION (CP) WORKS FOR IPOH BRANCH OFFICE (IPOBO)</p>	 <p>ElectroCorr</p>
	<p>Peta Penandaan Lokasi dan Gambar Lokasi</p>	<p>P225-015</p>

16. Test Post ID: SP-LHT/FCP/024
Coordinate: 4.51876 N, 101.08038 E
Road: Jalan Simpang Pulai - Lahat
Remark: Before Astana Fardisha



Location Picture:



Proposed Test
Post Location
Installation at
GMDSB
Marker

Excavation Area
& Pipeline
Location to
Install Mg

 GAS MALAYSIA DISTRIBUTION <small>A Member of Gas Malaysia Berhad</small>	TO UNDERTAKE CATHODIC PROTECTION (CP) WORKS FOR IPOH BRANCH OFFICE (IPOBO)	 ElectroCorr
	Peta Penandaan Lokasi dan Gambar Lokasi	P225-015

17. Test Post ID: BG/FCP/022
 Coordinate: 4.50738 N, 101.02336 E
 Road: Ipoh-Lumut Highway



Location Picture:
 -picture is taken from afar due to barbed wire fence blocking the access way.

