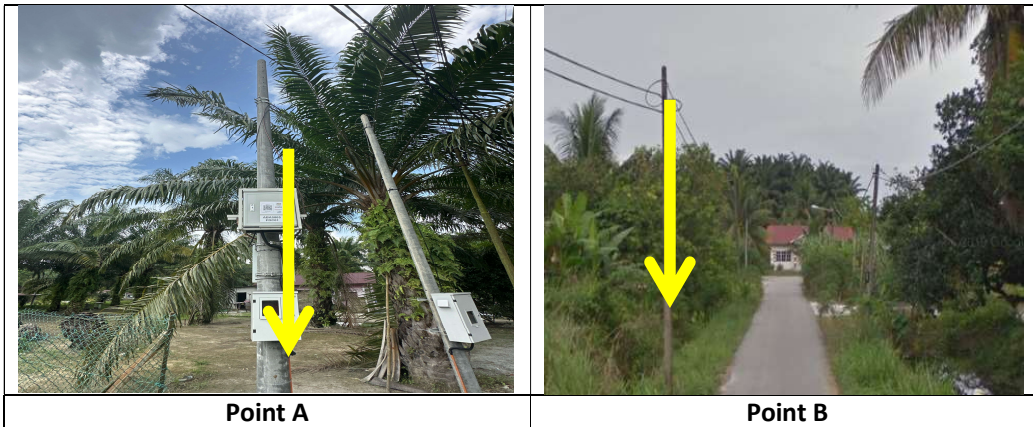


## TECHNICAL PROPOSAL

### POP2 ABA5065 SEKOLAH KEBANGSAAN TUKANG SIDIN ( D-SIDE )

**Company Name** : T&H PANJI EMPIRE SDN BHD  
**Company Address** : 39A Jalan Jelapang 5, Pusat Komersial Jelapang, 30020 Ipoh, Perak Darul Ridzuan.  
**Prepared By** : Muhamad Hasif Bin Mohamed Hanif  
**Date** : 11 / 12 / 2024



**Starting Point**

**Site / Boundary Name** : KAMPUNG TUKANG SIDIN  
**Address** : SEKOLAH KEBANGSAAN TUKANG SIDIN  
**District** : LANGKAP  
**Postcode** : 36700  
**State** : Perak  
**GPS Coordinate** : 4.055987,101.104355  
**LRD** : A

**End Point**

**Site / Boundary Name** : KAMPUNG TUKANG SIDIN  
**Address** : KAMPUNG TUKANG SIDIN  
**District** : LANGKAP  
**Postcode** : 36700  
**State** : Perak  
**GPS Coordinate** : 4.058841, 101.118186  
**LRD** : B



PROJEK PENYEDIAAN DAN PENYELENGGARAAN POINT OF PRESENT (POP) FASA 2: HAB INFRASTUKTUR GENTIAN OPTIK BERHAMPIRAN DENGAN SEKOLAH, KAWASAN PERINDUSTRIAN, PREMIS KERAJAAN DAN KOMUNITI SEKITARNYA OLEH KEMENTERIAN KOMUNIKASI MALAYSIA - ZON UTARA (KKMM.400-11/17/132(1))



## 1.0 WORK SUMMARY

NO	PROPOSED DISTANCE AND METHOD	UNIT	QUANTITY
1	Horizontal Directional Drilling (HDD)	m	0
2	Carriage Way Open Trench (CW)	m	0
3	Grass Verge Open Trenching (GV)	m	0
4	Micro Trenching (MT)	m	0
Total			0

NO	OTHER INFORMATION	UNIT	QUANTITY
1	Installation of Short Span ADSS Fiber Cables	m	5000m
2	Install New Pole	m	144
3	Install New JRC7 Manhole	m	0
4	Install GI Riser 100mm	ea	0
5	Install Fiber Distribution Point	ea	11
6	Closure (Splicing, Termination and Testing)	ea	3



PROJEK PENYEDIAAN DAN PENYELENGGARAAN POINT OF PRESENT (POP) FASA 2: HAB INFRASTUKTUR GENTIAN OPTIK BERHAMPIRAN DENGAN SEKOLAH, KAWASAN PERINDUSTRIAN, PREMIS KERAJAAN DAN KOMUNITI SEKITARNYA OLEH KEMENTERIAN KOMUNIKASI MALAYSIA - ZON UTARA (KKMM.400-11/17/132(1))



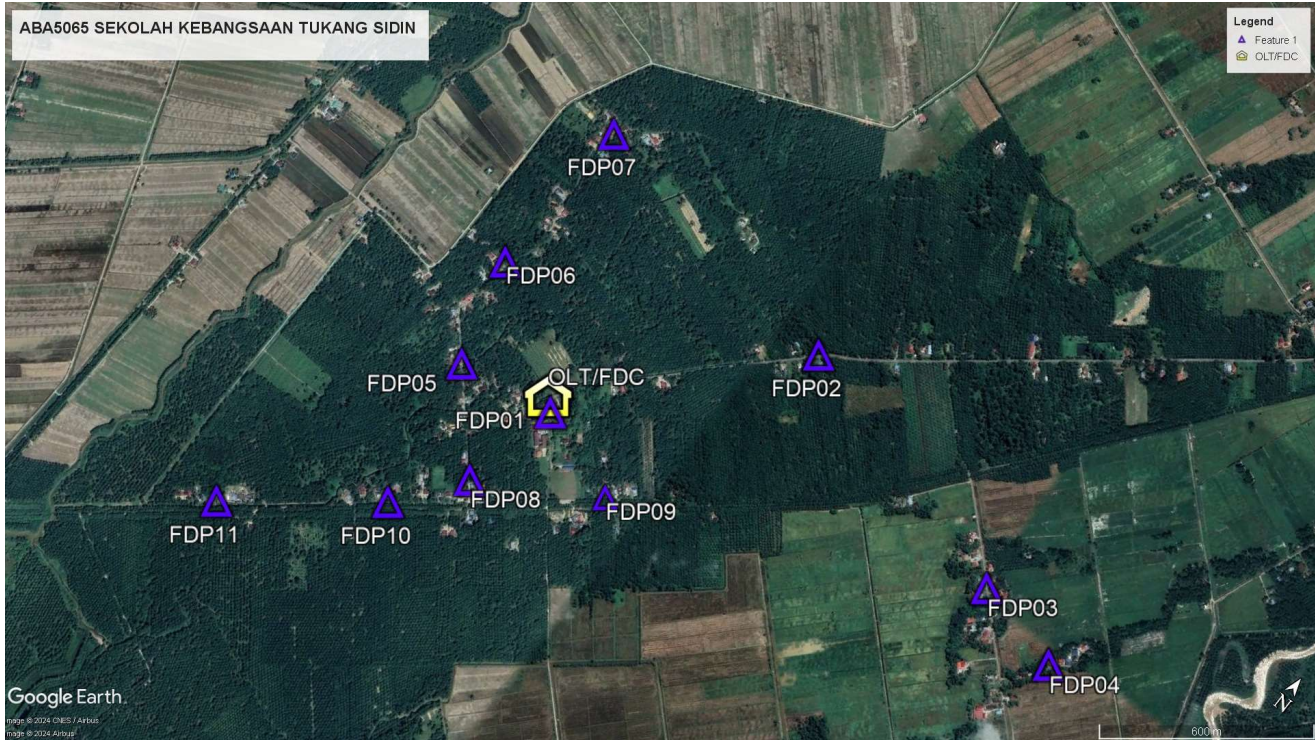
## 2.0 LOCAL AUTHORITY SUMMARY

Daerah Teluk Intan

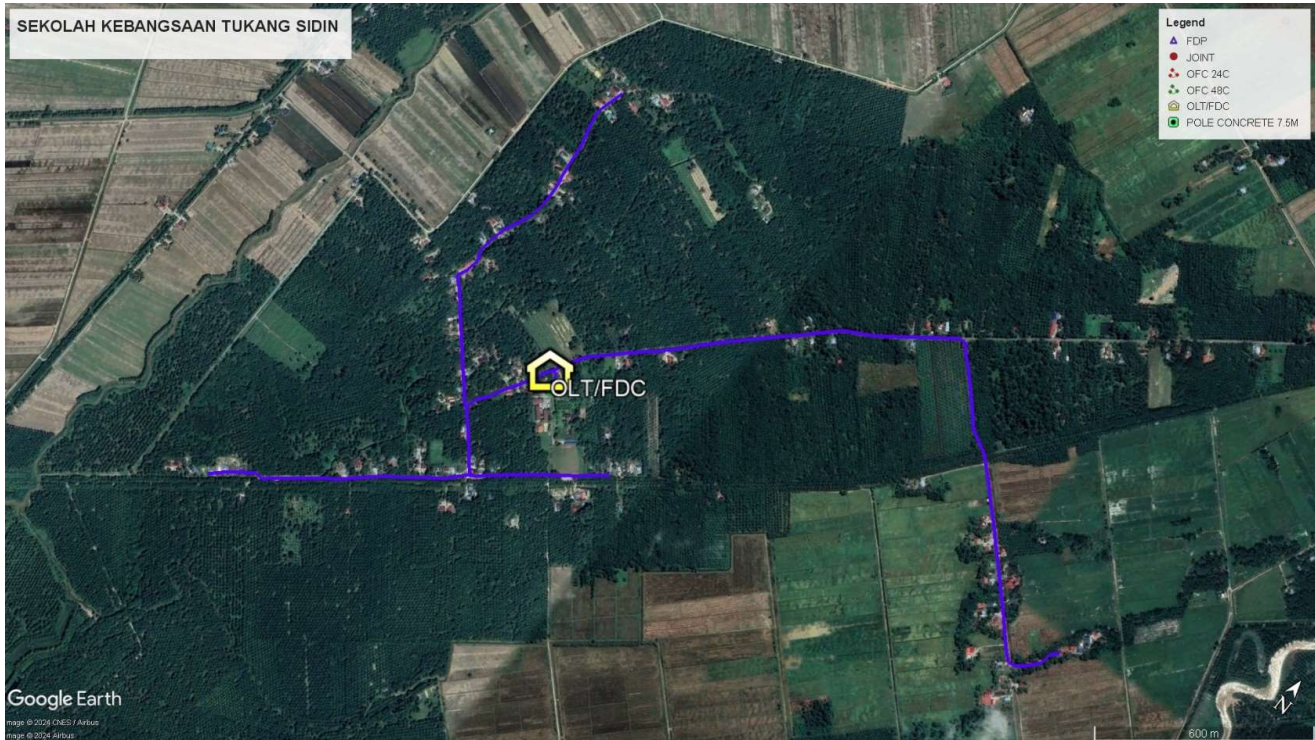
NO	ITEMS	Owner	Quantity	Distance (m)
1	HDD	JKR	-	-
		Majlis	-	-
		Estate / Private Land	-	-
2	New Pole	JKR	-	-
		Majlis	144	4950m
		Estate / Private Land	-	-
<b>Total Distance (m)</b>				<b>4950m</b>



### 3.2 Overview FDP Location



### 3.3 Site Plan - KMZ Routing (All Local Authority)



Red Colour – JKR Teluk Intan

Blue Colour – Majlis Perbandaran Teluk Intan

#### 4.0 PROPOSED NEW MANHOLE

Proposed New Manhole Coordinate					
No.	Manhole Number	Distance (m)	Latitude	Longitude	Local Authority
1	-	-	-	-	-
2	-	-	-	-	-

#### 5.0 PROPOSED NEW POLE

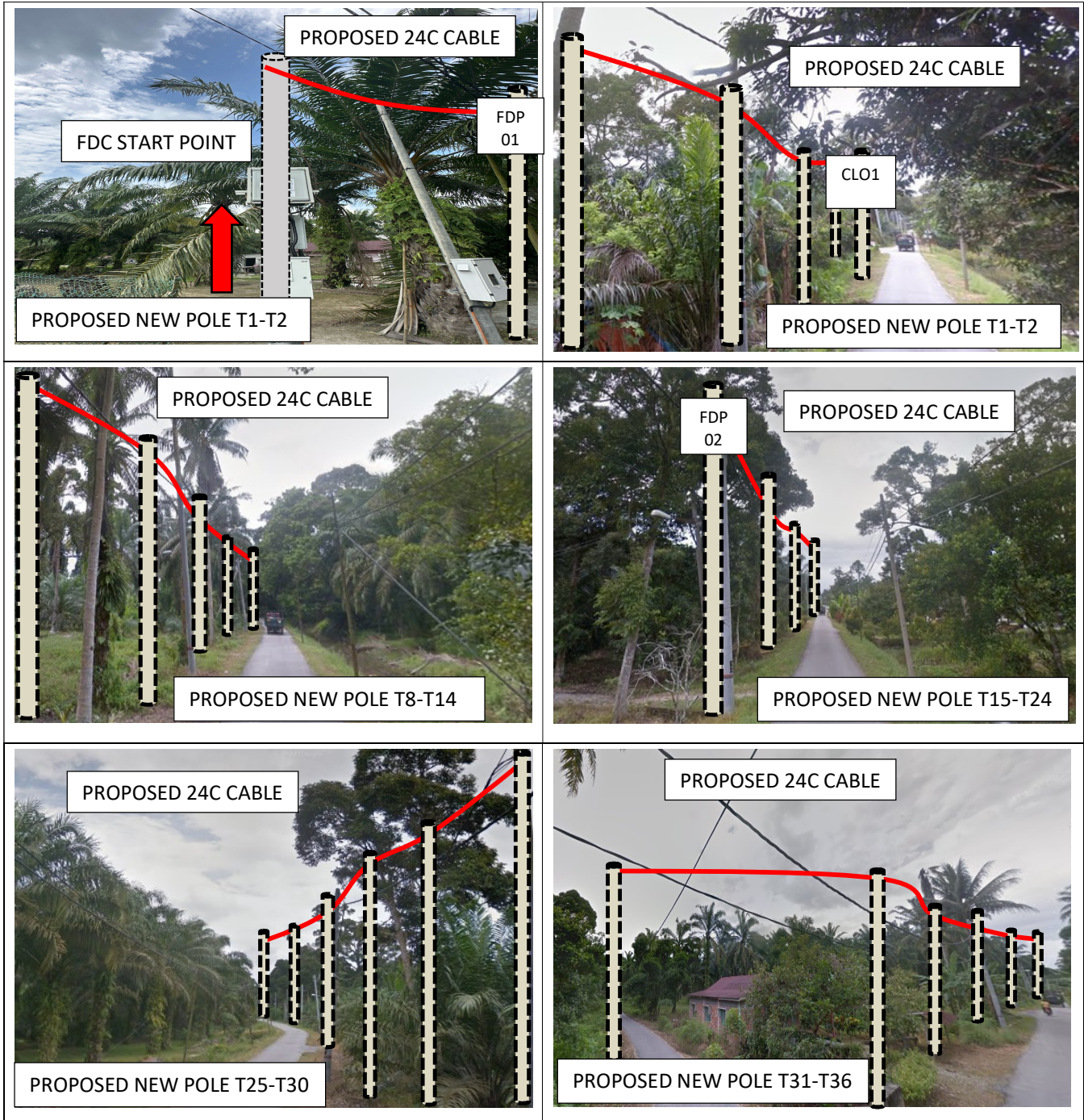
Proposed New Pole Coordinate					
No.	Pole Number	Distance (m)	Latitude	Longitude	Local Authority
1	T001	24	4.055987	101.104355	MAJLIS PERBANDARAN TELUK INTAN
2	T002 (FDP 01)	39	4.056183	101.104286	MAJLIS PERBANDARAN TELUK INTAN
3	T003	12	4.056503	101.104135	MAJLIS PERBANDARAN TELUK INTAN
4	T004	30	4.056522	101.104030	MAJLIS PERBANDARAN TELUK INTAN
5	T005	26	4.056766	101.121329	MAJLIS PERBANDARAN TELUK INTAN
6	T006	32	4.057041	101.104313	MAJLIS PERBANDARAN TELUK INTAN
7	T007	32	4.057288	101.104476	MAJLIS PERBANDARAN TELUK INTAN
8	T008	29	4.057491	101.104677	MAJLIS PERBANDARAN TELUK INTAN
9	T009	23	4.057671	101.104871	MAJLIS PERBANDARAN TELUK INTAN
10	T010	26	4.057814	101.105021	MAJLIS PERBANDARAN TELUK INTAN
11	T011	25	4.057979	101.105189	MAJLIS PERBANDARAN TELUK INTAN
12	T012	30	4.058138	101.105357	MAJLIS PERBANDARAN TELUK INTAN
13	T013	29	4.058319	101.105553	MAJLIS PERBANDARAN TELUK INTAN
14	T014	32	4.058484	101.105754	MAJLIS PERBANDARAN TELUK INTAN
15	T015	46	4.058692	101.105961	MAJLIS PERBANDARAN TELUK INTAN
16	T016	48	4.059007	101.106245	MAJLIS PERBANDARAN TELUK INTAN
17	T017	55	4.059328	101.106557	MAJLIS PERBANDARAN TELUK INTAN
18	T018	45	4.059708	101.106918	MAJLIS PERBANDARAN TELUK INTAN
19	T019	58	4.060001	101.107221	MAJLIS PERBANDARAN TELUK INTAN
20	T020	55	4.060389	101.107620	MAJLIS PERBANDARAN TELUK INTAN
21	T021	47	4.060729	101.107991	MAJLIS PERBANDARAN TELUK INTAN
22	T022	43	4.061018	101.108307	MAJLIS PERBANDARAN TELUK INTAN
23	T023	38	4.061305	101.108584	MAJLIS PERBANDARAN TELUK INTAN
24	T024 (FDP 02)	32	4.061547	101.108837	MAJLIS PERBANDARAN TELUK INTAN
25	T025	26	4.061742	101.109046	MAJLIS PERBANDARAN TELUK INTAN
26	T026	30	4.061856	101.109243	MAJLIS PERBANDARAN TELUK INTAN
27	T027	25	4.061990	101.109494	MAJLIS PERBANDARAN TELUK INTAN
28	T028	28	4.062106	101.109694	MAJLIS PERBANDARAN TELUK INTAN
29	T029	31	4.062248	101.109896	MAJLIS PERBANDARAN TELUK INTAN
30	T030	50	4.062409	101.110123	MAJLIS PERBANDARAN TELUK INTAN
31	T031	32	4.062704	101.110521	MAJLIS PERBANDARAN TELUK INTAN
32	T032	34	4.062877	101.110751	MAJLIS PERBANDARAN TELUK INTAN

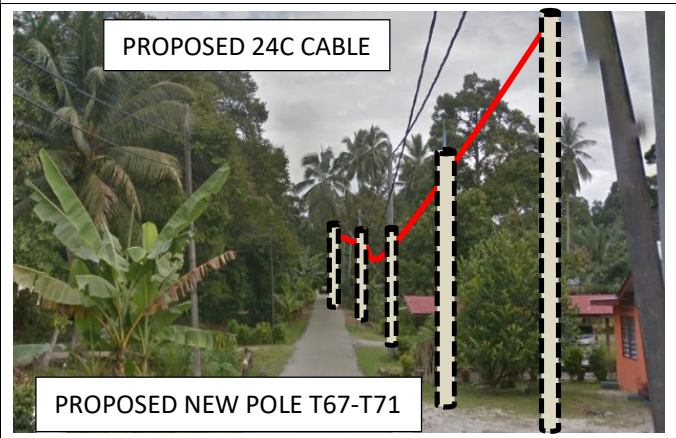
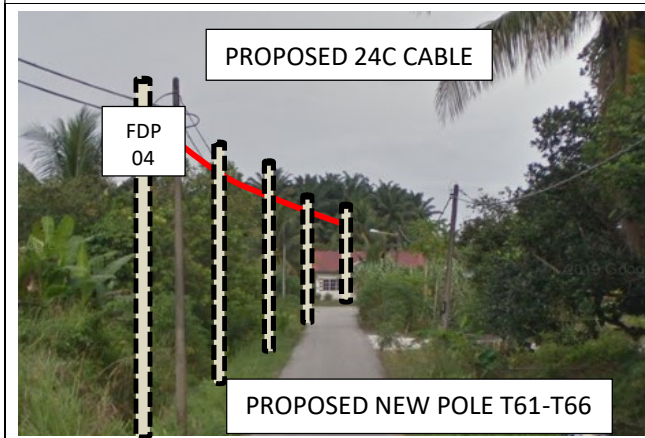
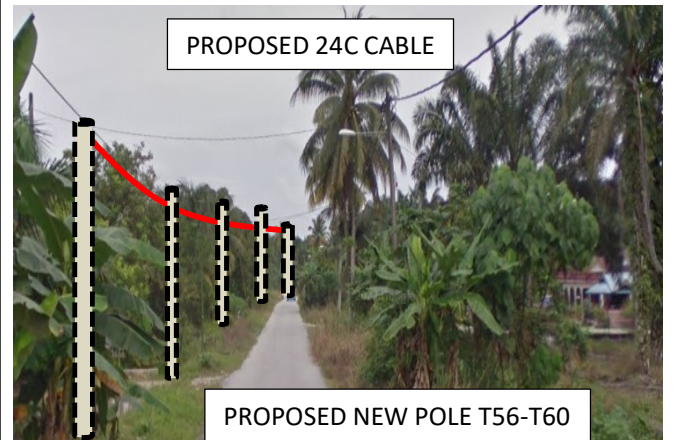
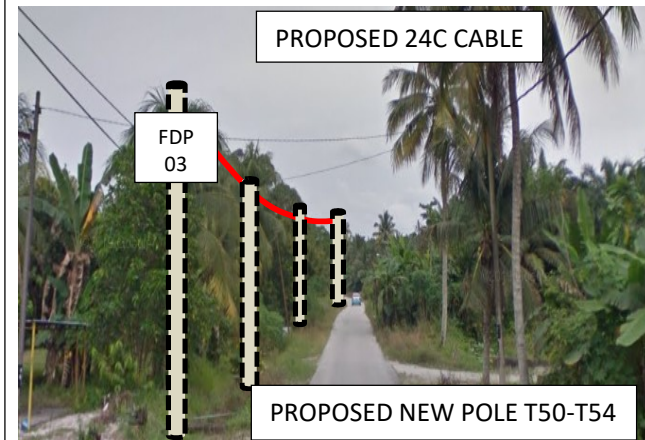
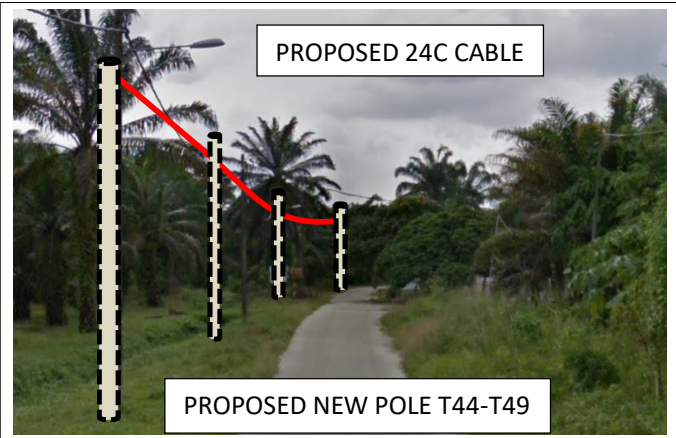
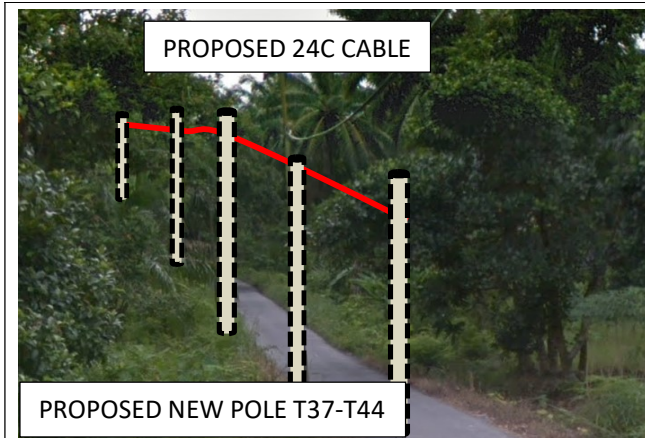
Proposed New Pole Coordinate					
No.	Pole Number	Distance (m)	Latitude	Longitude	Local Authority
33	T033	25	4.063059	101.111001	MAJLIS PERBANDARAN TELUK INTAN
34	T034	29	4.063190	101.111175	MAJLIS PERBANDARAN TELUK INTAN
35	T035	21	4.063356	101.111384	MAJLIS PERBANDARAN TELUK INTAN
36	T036	32	4.063382	101.111578	MAJLIS PERBANDARAN TELUK INTAN
37	T037	37	4.063160	101.111780	MAJLIS PERBANDARAN TELUK INTAN
38	T038	37	4.062932	101.112038	MAJLIS PERBANDARAN TELUK INTAN
39	T039	31	4.062685	101.112271	MAJLIS PERBANDARAN TELUK INTAN
40	T040	34	4.062475	101.112462	MAJLIS PERBANDARAN TELUK INTAN
41	T041	32	4.062263	101.112659	MAJLIS PERBANDARAN TELUK INTAN
42	T042	27	4.062058	101.112852	MAJLIS PERBANDARAN TELUK INTAN
43	T043	25	4.061892	101.113005	MAJLIS PERBANDARAN TELUK INTAN
44	T044	29	4.061766	101.113189	MAJLIS PERBANDARAN TELUK INTAN
45	T045	32	4.061660	101.113416	MAJLIS PERBANDARAN TELUK INTAN
46	T046	35	4.061512	101.113675	MAJLIS PERBANDARAN TELUK INTAN
47	T047	43	4.061304	101.113917	MAJLIS PERBANDARAN TELUK INTAN
48	T048	54	4.061023	101.114211	MAJLIS PERBANDARAN TELUK INTAN
49	T049	39	4.060653	101.114573	MAJLIS PERBANDARAN TELUK INTAN
50	T050	40	4.060432	101.114799	MAJLIS PERBANDARAN TELUK INTAN
51	T051	39	4.060178	101.115056	MAJLIS PERBANDARAN TELUK INTAN
52	T052	41	4.059924	101.115305	MAJLIS PERBANDARAN TELUK INTAN
53	T053	39	4.059664	101.115568	MAJLIS PERBANDARAN TELUK INTAN
54	T054 (FDP 03)	41	4.059429	101.115806	MAJLIS PERBANDARAN TELUK INTAN
55	T055	43	4.059173	101.116061	MAJLIS PERBANDARAN TELUK INTAN
56	T056	37	4.058900	101.116333	MAJLIS PERBANDARAN TELUK INTAN
57	T057	43	4.058655	101.116572	MAJLIS PERBANDARAN TELUK INTAN
58	T058	39	4.058372	101.116825	MAJLIS PERBANDARAN TELUK INTAN
59	T059	39	4.058117	101.117074	MAJLIS PERBANDARAN TELUK INTAN
60	T060	22	4.057883	101.117330	MAJLIS PERBANDARAN TELUK INTAN
61	T061	26	4.057923	101.117518	MAJLIS PERBANDARAN TELUK INTAN
62	T062	24	4.058065	101.117699	MAJLIS PERBANDARAN TELUK INTAN
63	T063	24	4.058217	101.117852	MAJLIS PERBANDARAN TELUK INTAN
64	T064	29	4.058402	101.117972	MAJLIS PERBANDARAN TELUK INTAN
65	T065	27	4.058663	101.118015	MAJLIS PERBANDARAN TELUK INTAN
66	T066 (FDP 04)	2207	4.058841	101.118186	MAJLIS PERBANDARAN TELUK INTAN
67	T067	29	4.056334	101.103927	MAJLIS PERBANDARAN TELUK INTAN
68	T068	29	4.056106	101.103805	MAJLIS PERBANDARAN TELUK INTAN
69	T069	31	4.055875	101.103674	MAJLIS PERBANDARAN TELUK INTAN
70	T070	30	4.055636	101.103536	MAJLIS PERBANDARAN TELUK INTAN

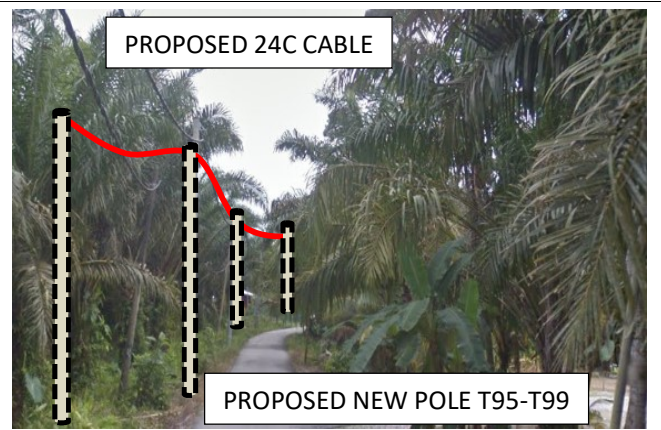
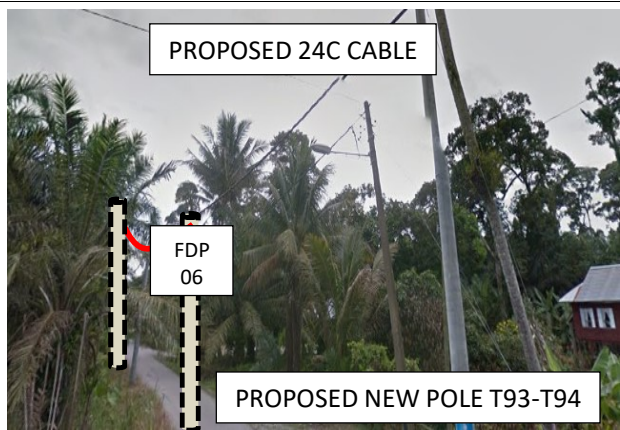
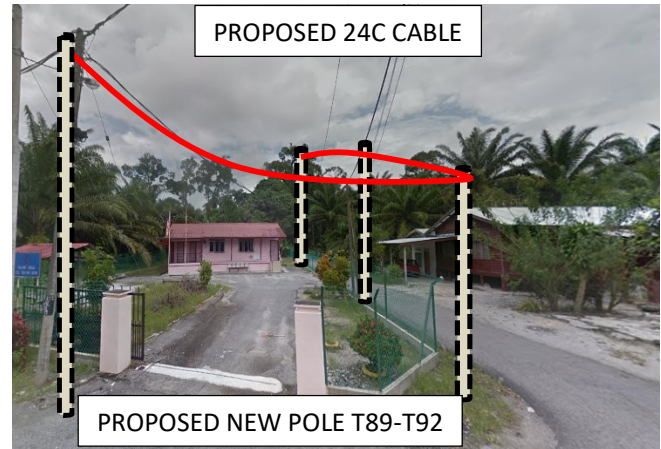
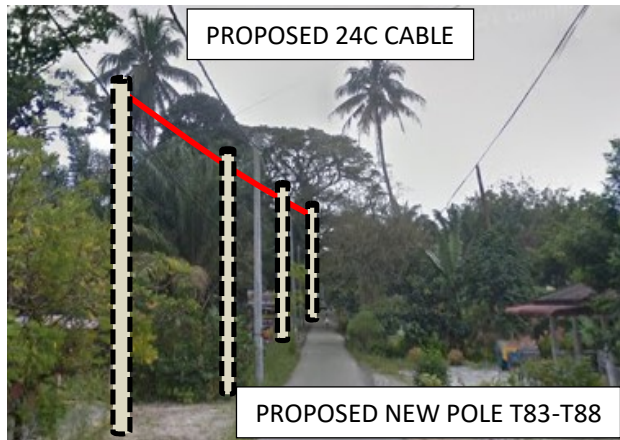
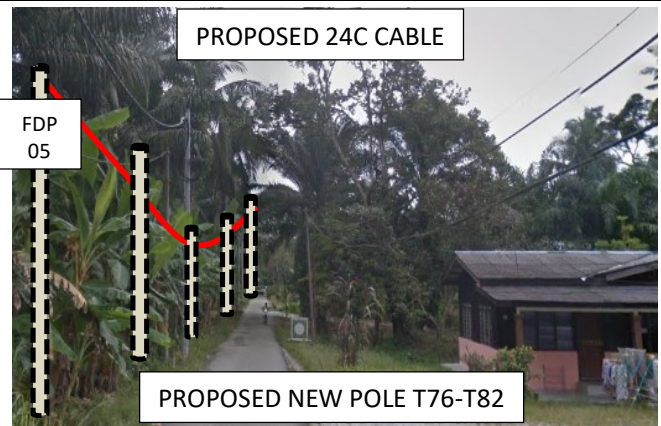
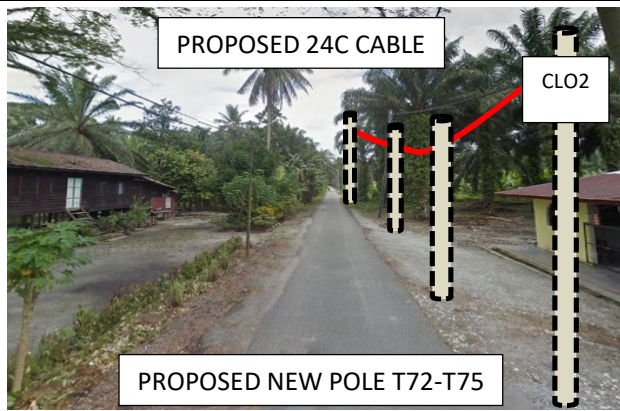
Proposed New Pole Coordinate					
No.	Pole Number	Distance (m)	Latitude	Longitude	Local Authority
71	T071	26	4.055406	101.103408	MAJLIS PERBANDARAN TELUK INTAN
72	T072	25	4.055196	101.103286	MAJLIS PERBANDARAN TELUK INTAN
73	T073	34	4.055009	101.103171	MAJLIS PERBANDARAN TELUK INTAN
74	T074	32	4.054765	101.102979	MAJLIS PERBANDARAN TELUK INTAN
75	T075	23	4.054496	101.102902	MAJLIS PERBANDARAN TELUK INTAN
76	T076	35	4.054608	101.102747	MAJLIS PERBANDARAN TELUK INTAN
77	T077	25	4.054857	101.102537	MAJLIS PERBANDARAN TELUK INTAN
78	T078	27	4.055023	101.102392	MAJLIS PERBANDARAN TELUK INTAN
79	T079	30	4.055211	101.102222	MAJLIS PERBANDARAN TELUK INTAN
80	T080	28	4.055416	101.102033	MAJLIS PERBANDARAN TELUK INTAN
81	T081	26	4.055597	101.101870	MAJLIS PERBANDARAN TELUK INTAN
82	T082 (FDP 05)	26	4.055782	101.101714	MAJLIS PERBANDARAN TELUK INTAN
83	T083	23	4.055966	101.101557	MAJLIS PERBANDARAN TELUK INTAN
84	T084	35	4.056126	101.101423	MAJLIS PERBANDARAN TELUK INTAN
85	T085	27	4.056361	101.101220	MAJLIS PERBANDARAN TELUK INTAN
86	T086	28	4.056546	101.101060	MAJLIS PERBANDARAN TELUK INTAN
87	T087	26	4.056733	101.100891	MAJLIS PERBANDARAN TELUK INTAN
88	T088	29	4.056884	101.100710	MAJLIS PERBANDARAN TELUK INTAN
89	T089	40	4.057110	101.100809	MAJLIS PERBANDARAN TELUK INTAN
90	T090	32	4.057473	101.100894	MAJLIS PERBANDARAN TELUK INTAN
91	T091	48	4.057731	101.100786	MAJLIS PERBANDARAN TELUK INTAN
92	T092	43	4.058181	101.100871	MAJLIS PERBANDARAN TELUK INTAN
93	T093 (FDP 06)	36	4.058528	101.100989	MAJLIS PERBANDARAN TELUK INTAN
94	T094	44	4.058844	101.101102	MAJLIS PERBANDARAN TELUK INTAN
94	T095	47	4.059228	101.101257	MAJLIS PERBANDARAN TELUK INTAN
96	T096	47	4.059660	101.101297	MAJLIS PERBANDARAN TELUK INTAN
97	T097	46	4.060100	101.101277	MAJLIS PERBANDARAN TELUK INTAN
98	T098	37	4.060524	101.101201	MAJLIS PERBANDARAN TELUK INTAN
99	T099	42	4.060858	101.101179	MAJLIS PERBANDARAN TELUK INTAN
100	T0100	50	4.061262	101.101125	MAJLIS PERBANDARAN TELUK INTAN
101	T0101	42	4.061796	101.101005	MAJLIS PERBANDARAN TELUK INTAN
102	T0102	30	4.062189	101.100930	MAJLIS PERBANDARAN TELUK INTAN
103	T0103	47	4.062438	101.100980	MAJLIS PERBANDARAN TELUK INTAN
104	T0104 (FDP 07)	1077	4.062871	101.101148	MAJLIS PERBANDARAN TELUK INTAN
105	T0105	26	4.054322	101.103055	MAJLIS PERBANDARAN TELUK INTAN
106	T0106	27	4.054152	101.103221	MAJLIS PERBANDARAN TELUK INTAN
107	T0107	30	4.053962	101.103383	MAJLIS PERBANDARAN TELUK INTAN
108	T0108	26	4.053754	101.103562	MAJLIS PERBANDARAN TELUK INTAN
109	T0109 (FDP 08)	37	4.053574	101.103714	MAJLIS PERBANDARAN TELUK INTAN

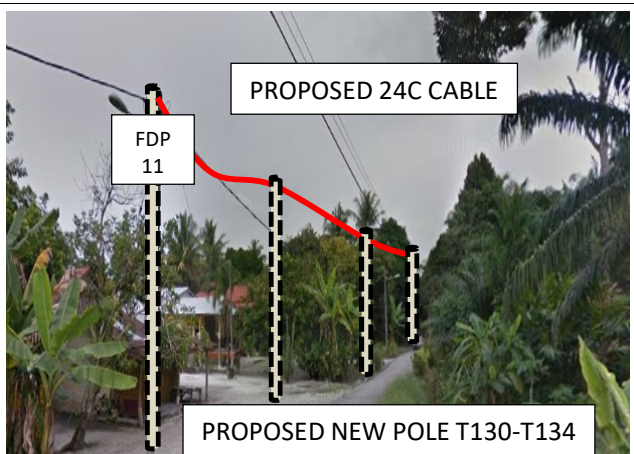
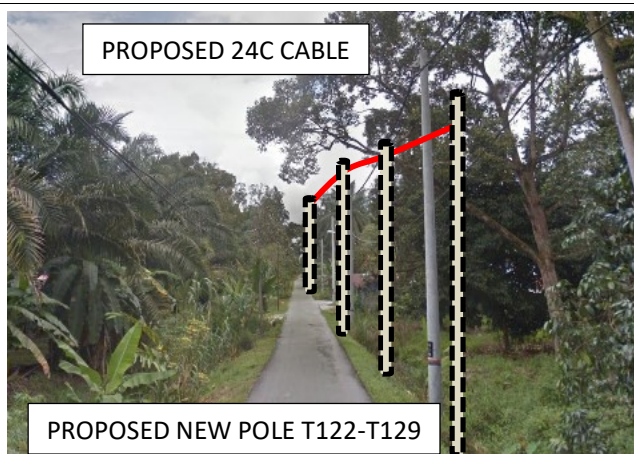
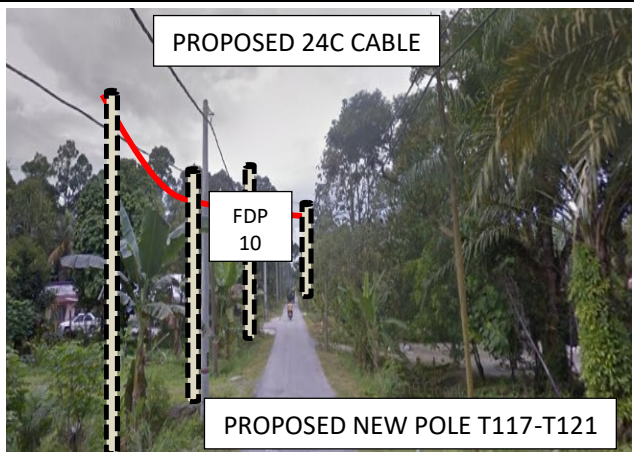
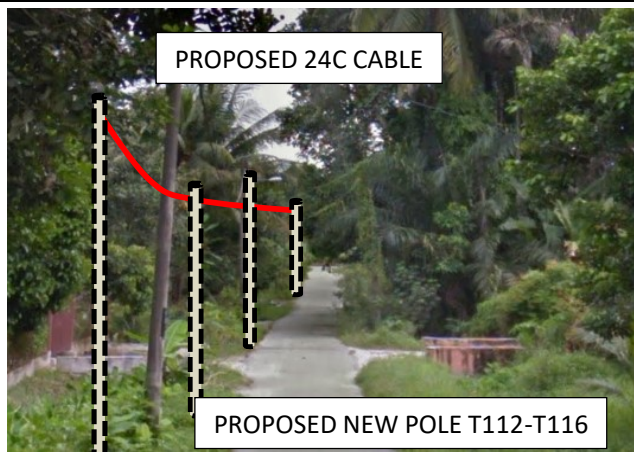
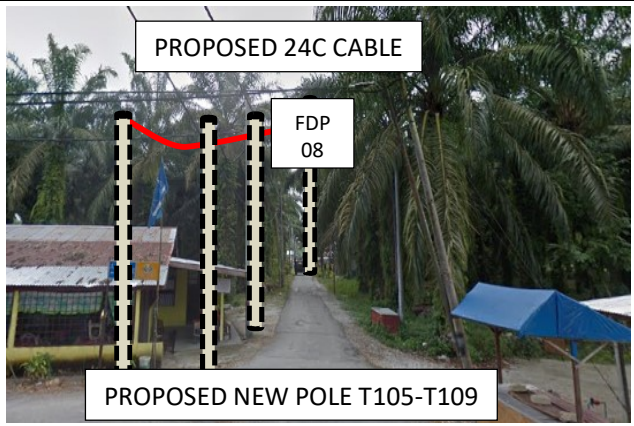
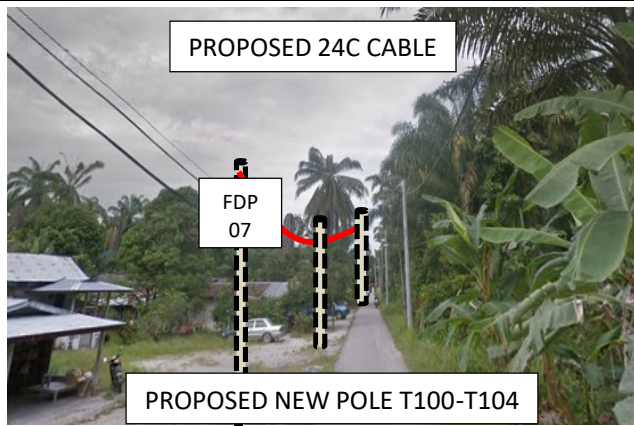
Proposed New Pole Coordinate					
No.	Pole Number	Distance (m)	Latitude	Longitude	Local Authority
110	T0110	29	4.053410	101.103868	MAJLIS PERBANDARAN TELUK INTAN
111	T0111	28	4.053205	101.104029	MAJLIS PERBANDARAN TELUK INTAN
112	T0112	36	4.053028	101.103837	MAJLIS PERBANDARAN TELUK INTAN
113	T0113	28	4.052797	101.103608	MAJLIS PERBANDARAN TELUK INTAN
114	T0114	25	4.052642	101.103407	MAJLIS PERBANDARAN TELUK INTAN
115	T0115	23	4.052498	101.103217	MAJLIS PERBANDARAN TELUK INTAN
116	T0116	27	4.052377	101.103059	MAJLIS PERBANDARAN TELUK INTAN
117	T0117	27	4.052224	101.102867	MAJLIS PERBANDARAN TELUK INTAN
118	T0118	25	4.052089	101.102688	MAJLIS PERBANDARAN TELUK INTAN
119	T0119	22	4.051961	101.102537	MAJLIS PERBANDARAN TELUK INTAN
120	T0120 (FDP 10)	28	4.051863	101.102413	MAJLIS PERBANDARAN TELUK INTAN
121	T0121	23	4.051705	101.102211	MAJLIS PERBANDARAN TELUK INTAN
122	T0122	23	4.051584	101.102058	MAJLIS PERBANDARAN TELUK INTAN
123	T0123	26	4.051460	101.101898	MAJLIS PERBANDARAN TELUK INTAN
124	T0124	34	4.051282	101.101728	MAJLIS PERBANDARAN TELUK INTAN
125	T0125	33	4.051066	101.101493	MAJLIS PERBANDARAN TELUK INTAN
126	T0126	39	4.050868	101.101264	MAJLIS PERBANDARAN TELUK INTAN
127	T0127	48	4.050660	101.100972	MAJLIS PERBANDARAN TELUK INTAN
128	T0128	35	4.050384	101.100615	MAJLIS PERBANDARAN TELUK INTAN
129	T0129	42	4.050185	101.100364	MAJLIS PERBANDARAN TELUK INTAN
130	T0130	25	4.049936	101.100048	MAJLIS PERBANDARAN TELUK INTAN
131	T0131	39	4.049958	101.099836	MAJLIS PERBANDARAN TELUK INTAN
132	T0132	45	4.049725	101.099547	MAJLIS PERBANDARAN TELUK INTAN
133	T0133	42	4.049473	101.099211	MAJLIS PERBANDARAN TELUK INTAN
134	T0134 (FDP 11)	42	4.049216	101.098919	MAJLIS PERBANDARAN TELUK INTAN
135	T0135	28	4.053290	101.104197	MAJLIS PERBANDARAN TELUK INTAN
136	T0136	27	4.053438	101.104367	MAJLIS PERBANDARAN TELUK INTAN
137	T0137	34	4.053602	101.104582	MAJLIS PERBANDARAN TELUK INTAN
138	T0138	42	4.053819	101.104814	MAJLIS PERBANDARAN TELUK INTAN
139	T0139	43	4.054060	101.105115	MAJLIS PERBANDARAN TELUK INTAN
140	T0140	47	4.054306	101.105431	MAJLIS PERBANDARAN TELUK INTAN
141	T0141	37	4.054591	101.105781	MAJLIS PERBANDARAN TELUK INTAN
142	T0142	46	4.054799	101.106059	MAJLIS PERBANDARAN TELUK INTAN
143	T0143	45	4.055074	101.106383	MAJLIS PERBANDARAN TELUK INTAN
144	T0144	45	4.055336	101.106721	MAJLIS PERBANDARAN TELUK INTA

**6.0 SITE PHOTOS - PROPOSED NEW POLE**



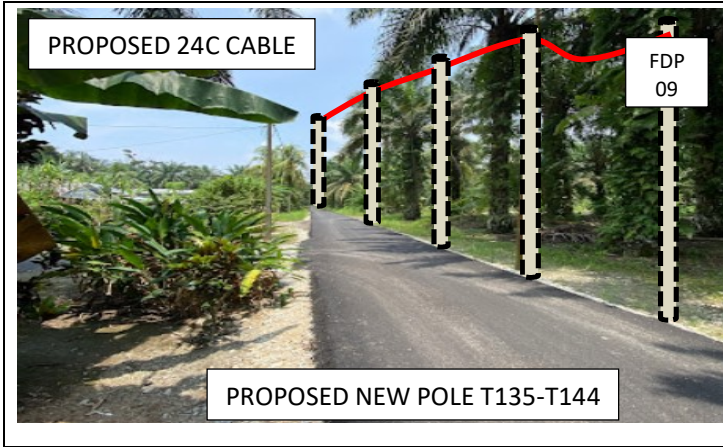








PROJEK PENYEDIAAN DAN PENYELENGGARAAN POINT OF PRESENT (POP) FASA 2: HAB INFRASTUKTUR GENTIAN OPTIK BERHAMPIRAN DENGAN SEKOLAH, KAWASAN PERINDUSTRIAN, PREMIS KERAJAAN DAN KOMUNITI SEKITARNYA OLEH KEMENTERIAN KOMUNIKASI MALAYSIA - ZON UTARA (KKMM.400-11/17/132(1))



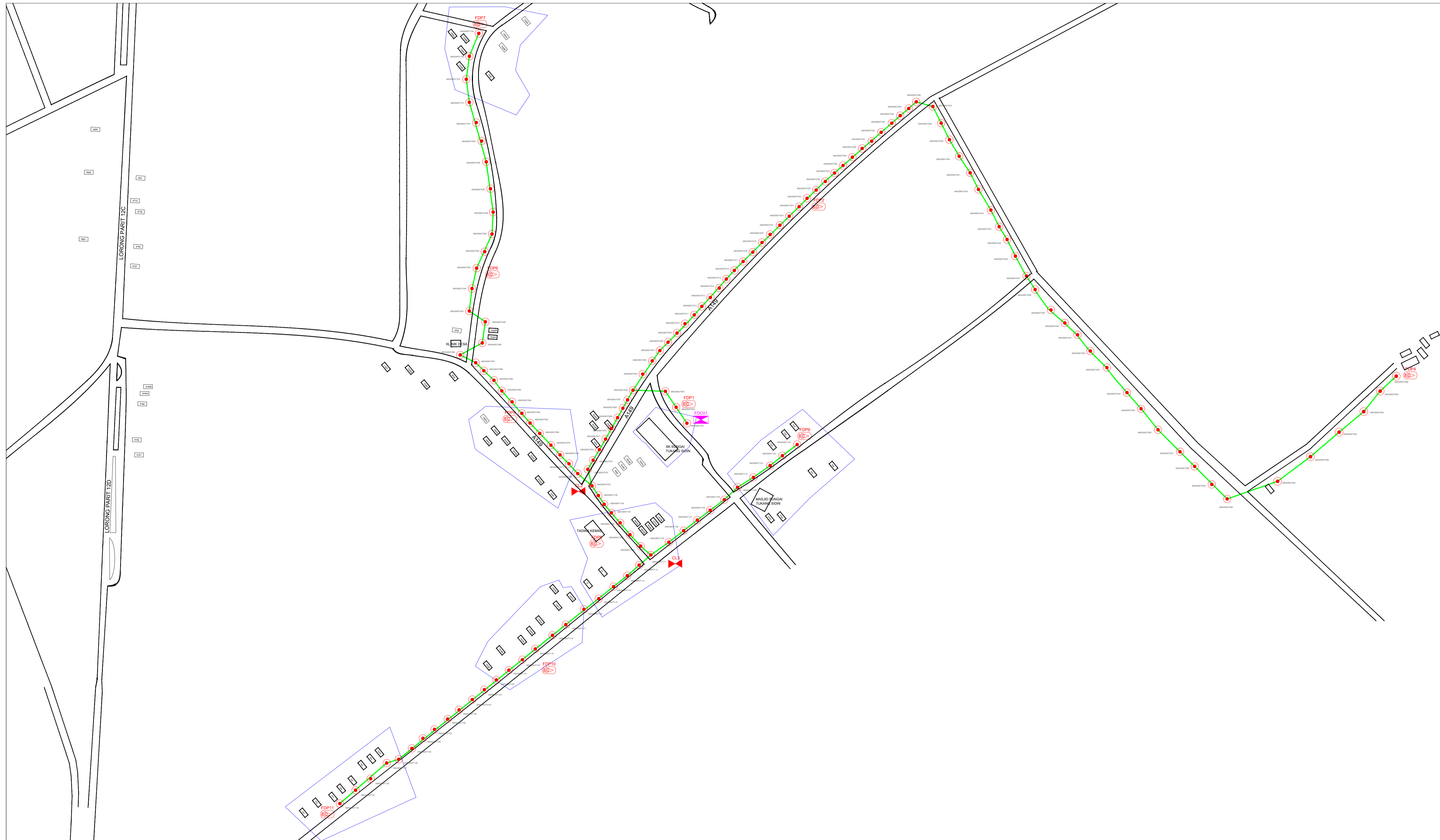


PROJEK PENYEDIAAN DAN PENYELENGGARAAN POINT OF PRESENT (POP) FASA 2: HAB INFRASTUKTUR GENTIAN OPTIK BERHAMPIRAN DENGAN SEKOLAH, KAWASAN PERINDUSTRIAN, PREMIS KERAJAAN DAN KOMUNITI SEKITARNYA OLEH KEMENTERIAN KOMUNIKASI MALAYSIA - ZON UTARA (KKMM.400-11/17/132(1))



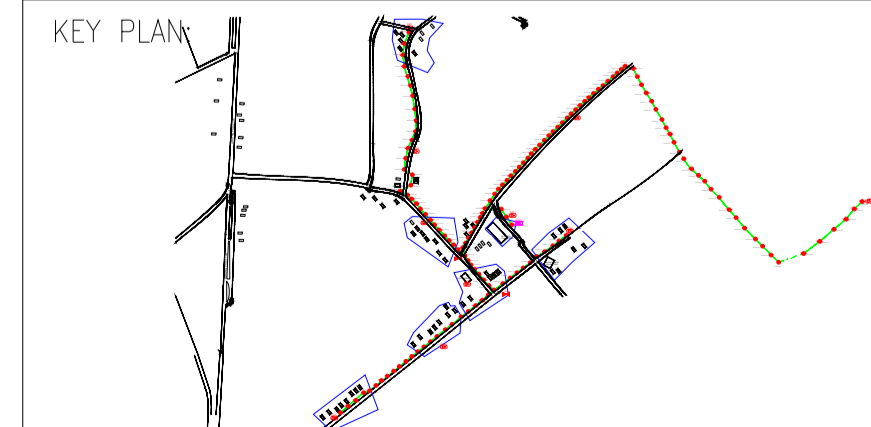
## 7.0 3<sup>rd</sup> PARTIES DEPENDENCIES

NO	LOCAL COUNCIL / AUTHORITY	REMARK
1	Majlis Perbandaran Teluk Intan	5000M



	12C FOC	Installed 1:4 / 1:8 / 1:32 splitter		Installed Pole (9m)		Suspension		New Manhole (PIT)		Micro-Trenching (Meter)		MH NO.
	24C FOC	Installed Patch Cord		Installed Pole (7.5M)		Tension		New Manhole(JRC7)		Temporary Infra (Meter)		Existing TNB Pole NO.
	48C FOC	FDC		Installed Pole (6.7M)		Pole Ring		FDP Boundary		Loop / Coil (Meter)		New Pole NO.
	96C FOC	Closure		Existing TNB Pole		FDP with (1:8) splitter		HDD (Meter)		Active Outdoor Cabinet		Closure NO.
	144C FOC	Existing Closure		Installed Riser		Existing Manhole		Open Cut (Meter)		FDC NO.		FDP NO.

ACTUAL HOMEPASS : 88



PROJECT OWNER:

KEMENTERIAN KOMUNIKASI DAN DIGITAL

MAIN CONTRACTOR:

PRIVASAT

SUB-CONTRACTOR:

T&H PANJI EMPIRE SDN BHD  
39A, Jalan Jelapang 5,  
Pusat Komersial,  
Jelapang, 30020 Ipoh, Perak  
TEL: 013-418 4046

PROJECT TITLE:  
SUPPLY, INSTALLATION AND COMMISSIONING OF FTTX NETWORK INFRASTRUCTURE FOR ALLO TECHNOLOGY SDN BHD POP 2 PROJECT (D-SIDE) – PMU TINT FOR ABA5065 SEKOLAH KEBANGSAAN SUNGAI TUKANG SIDIN

DRAWING TITLE:  
LAYOUT PLAM – SK SUNGAI TUKANG SIDIN

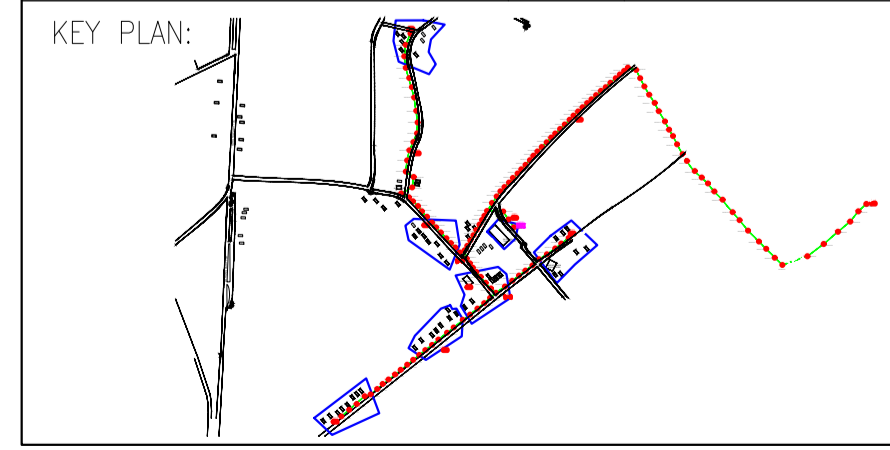
PROJECT PHASE:

Design By : T&H PANJI EMPIRE	Date : 11/12/2024
Drawn By : FAKHRUL	Scale : 1 : 18
Checked By :	Job Number : 60
DRAWING NUMBER : ABA5065/2024/	Sheet : 1/1
THIS PRINT AND ITS COPYRIGHT ARE THE PROPERTY OF T&H PANJI EMPIRE SDN BHD	
Size : A1	



12C FOC	Installed 1:4 / 1:8 / 1:32 splitter	Installed Pole (9m)	Suspension	JB30	New Manhole (PIT)	Micro-Trenching (Meter)	MH1	MH NO.	
24C FOC	Installed Patch Cord	Installed Pole (7.5M)	Tension	C7	New Manhole(JRC7)	Temporary Infra (Meter)	TKS-1	Existing TNB Pole NO.	
48C FOC	FDC	Installed Pole (6.7M)	Pole Ring		FDP Boundary	Loop / Coil (Meter)	P001	New Pole NO.	
96C FOC	Closure	Existing TNB Pole	FDP with (1:8) splitter		HDD (Meter)	Active Outdoor Cabinet	CL01	Closure NO.	
144C FOC	Existing Closure	Installed Riser	Existing Manhole		Open Cut (Meter)	C01	FDC NO.	DP1	FDP NO.

ACTUAL HOMEPASS : 88




PROJECT OWNER:



KEMENTERIAN KOMUNIKASI DAN DIGITAL

MAIN CONTRACTOR:




APEX COMMUNICATIONS SDN BHD  
187475-V



PRIVASAT

SUB-CONTRACTOR:



T&H PANJI EMPIRE SDN BHD  
39A, Jalan Jelapang 5,  
Pusat Komersial,  
Jelapang, 30020 Ipoh, Perak  
TEL: 013-418 4046

PROJECT TITLE:

SUPPLY, INSTALLATION AND COMMISSIONING OF FTTX NETWORK INFRASTRUCTURE FOR ALLO TECHNOLOGY SDN BHD POP 2 PROJECT (D-SIDE) – PMU TINT FOR ABA5065 SEKOLAH KEBANGSAAN SUNGAI TUKANG SIDIN

DRAWING TITLE:

LAYOUT PLAN – SK SUNGAI TUKANG SIDIN

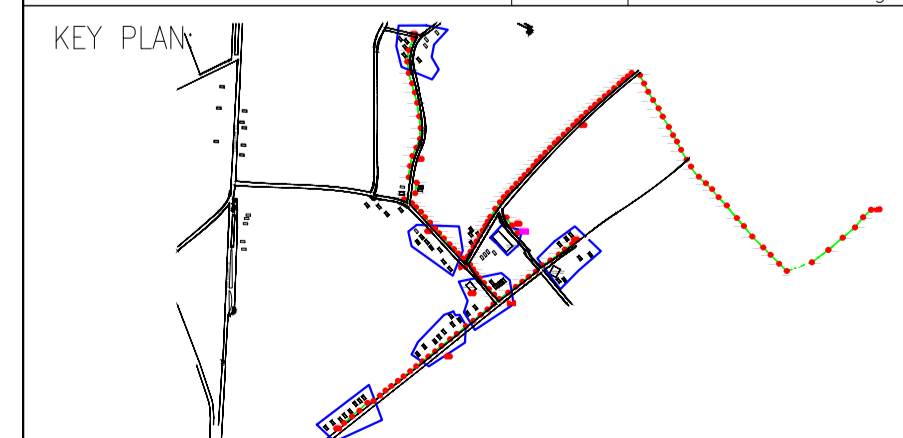
PROJECT PHASE:

Design By : T&H PANJI EMPIRE	Date : 11/12/2024
Drawn By : FAKHRUL	Scale : 1 : 450
Checked By :	Job Number : 60
DRAWING NUMBER :	Sheet : 3/4
THIS PRINT AND ITS COPYRIGHT ARE THE PROPERTY OF T&H PANJI EMPIRE SDN BHD	
Size : A1	



	12C FOC	Installed 1:4 / 1:8 / 1:32 splitter		Installed Pole (9m)			Suspension		New Manhole (PIT)		Micro-Trenching (Meter)		MH1	MH NO.
	24C FOC	Installed Patch Cord		Installed Pole (7.5M)	144		Tension		New Manhole(JRC7)		Temporary Infra (Meter)		TKS-1	Existing TNB Pole NO.
	48C FOC	FDC		Installed Pole (6.7M)			Pole Ring		FDP Boundary		Loop / Coil (Meter)		P001	New Pole NO.
	96C FOC	Closure		Existing TNB Pole			FDP with (1:8) splitter		HDD (Meter)		Active Outdoor Cabinet		CL01	Closure NO.
	144C FOC	Existing Closure		Installed Riser			Existing Manhole		Open Cut (Meter)		FDC NO.		DP1	FDP NO.

ACTUAL HOMEPASS : 88



PROJECT OWNER:

KEMENTERIAN KOMUNIKASI DAN DIGITAL

MAIN CONTRACTOR:

PRIVASAT

SUB-CONTRACTOR:

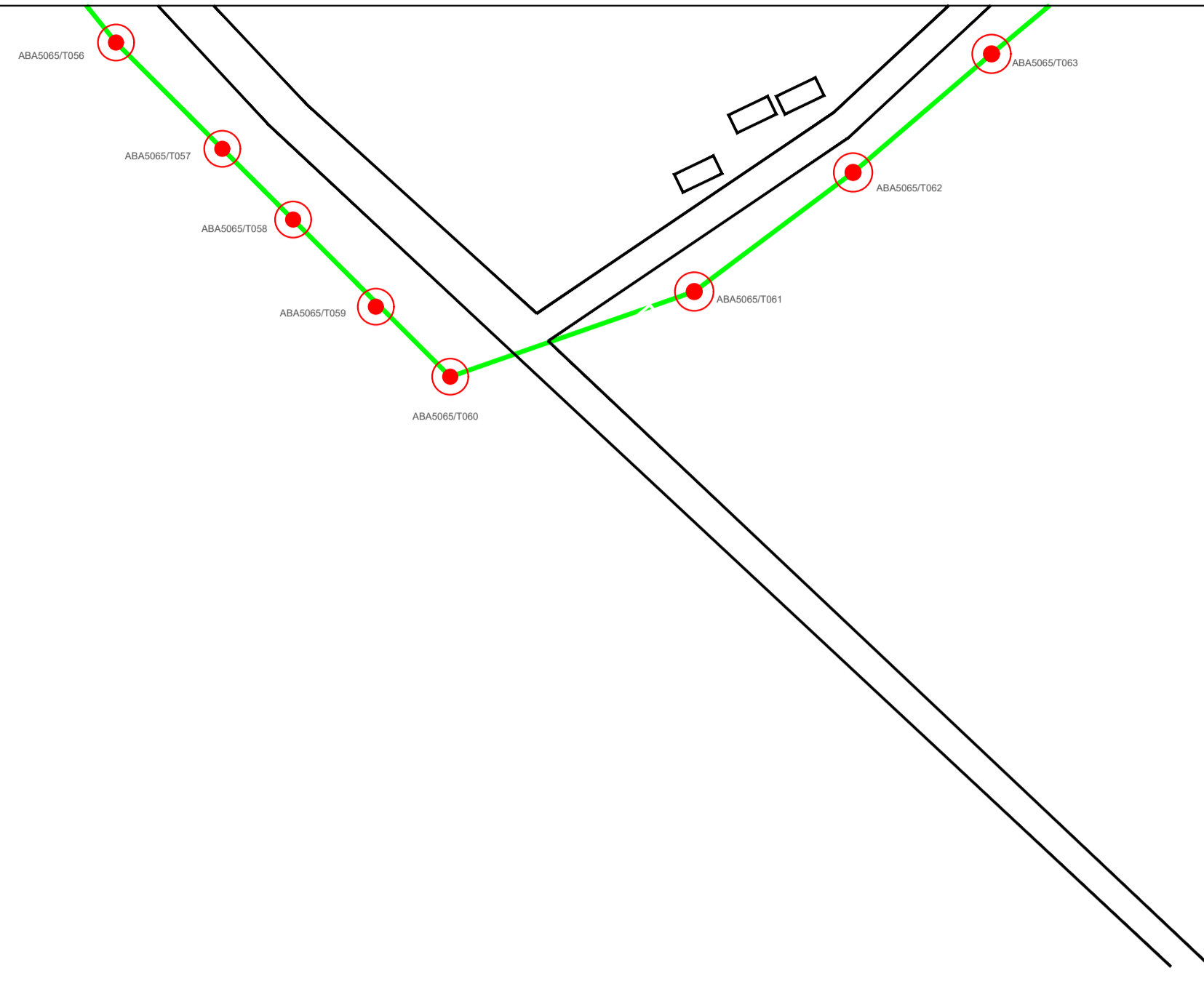
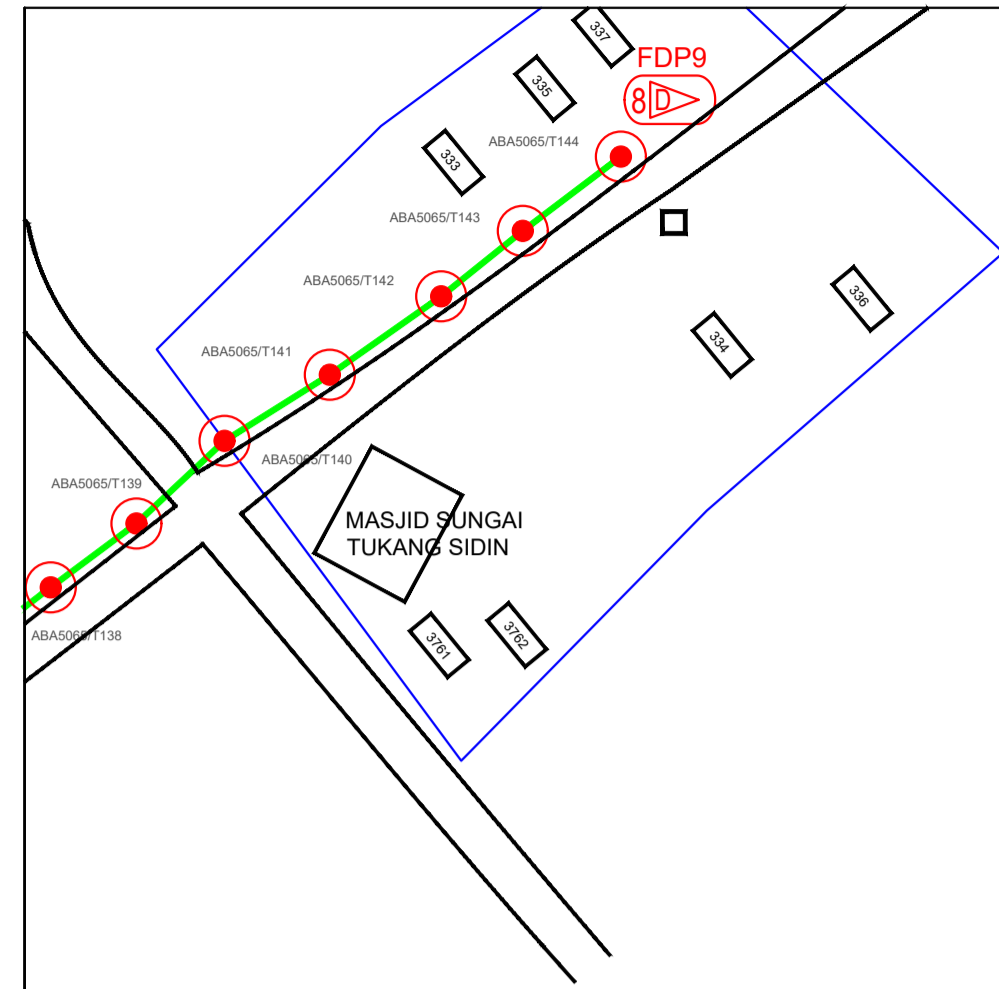
T&H PANJI EMPIRE SDN BHD  
39A, Jalan Jelapang 5,  
Pusat Komersial,  
Jelapang, 30020 Ipoh, Perak  
TEL: 013-418 4046

PROJECT TITLE:  
SUPPLY, INSTALLATION AND COMMISSIONING OF FTTX NETWORK INFRASTRUCTURE FOR ALLO TECHNOLOGY SDN BHD POP 2 PROJECT (D-SIDE) – PMU TINT FOR ABA5065 SEKOLAH KEBANGSAAN SUNGAI TUKANG SIDIN

DRAWING TITLE:  
LAYOUT PLAM – SK SUNGAI TUKANG SIDIN

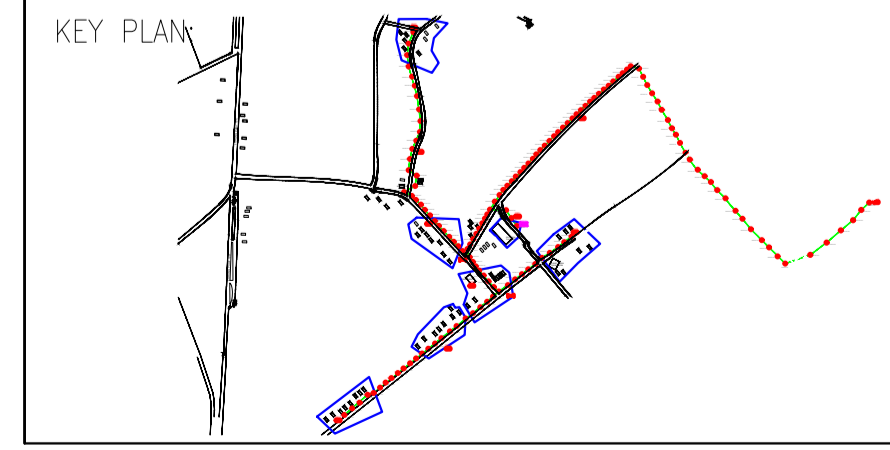
PROJECT PHASE:

Design By : T&H PANJI EMPIRE	Date : 11/12/2024
Drawn By : FAKHRUL	Scale : 1 : 10
Checked By :	Job Number : 60
DRAWING NUMBER :	Sheet : 4/4
THIS PRINT AND ITS COPYRIGHT ARE THE PROPERTY OF T&H PANJI EMPIRE SDN BHD	
	Size : A1



12C FOC	Installed 1:4 / 1:8 / 1:32 splitter	Installed Pole (9m)	s	Suspension	UB30	New Manhole (PIT)	Micro-Trenching (Meter)	MH1	MH NO.	
24C FOC	Installed Patch Cord	Installed Pole (7.5M)	144	T	Tension	C7	New Manhole(JRC7)	TKS-1	Existing TNB Pole NO.	
48C FOC	FDC	Installed Pole (6.7M)	1	Pole Ring	FDP Boundary	Loop / Coil (Meter)	P001	New Pole NO.		
96C FOC	Closure	Existing TNB Pole	3	FDP with (1:8) splitter	11	HDD (Meter)	#	Active Outdoor Cabinet	CL01	Closure NO.
144C FOC	Existing Closure	Installed Riser		Existing Manhole		Open Cut (Meter)	C01	FDC NO.	DP1	FDP NO.

ACTUAL HOMEPASS : 88



PROJECT OWNER:

KEMENTERIAN KOMUNIKASI DAN DIGITAL

MAIN CONTRACTOR:

PRIVASAT

SUB-CONTRACTOR:

T&H PANJI EMPIRE SDN BHD  
39A, Jalan Jelapang 5,  
Pusat Komersial,  
Jelapang, 30020 Ipoh, Perak  
TEL: 013-418 4046

PROJECT TITLE:

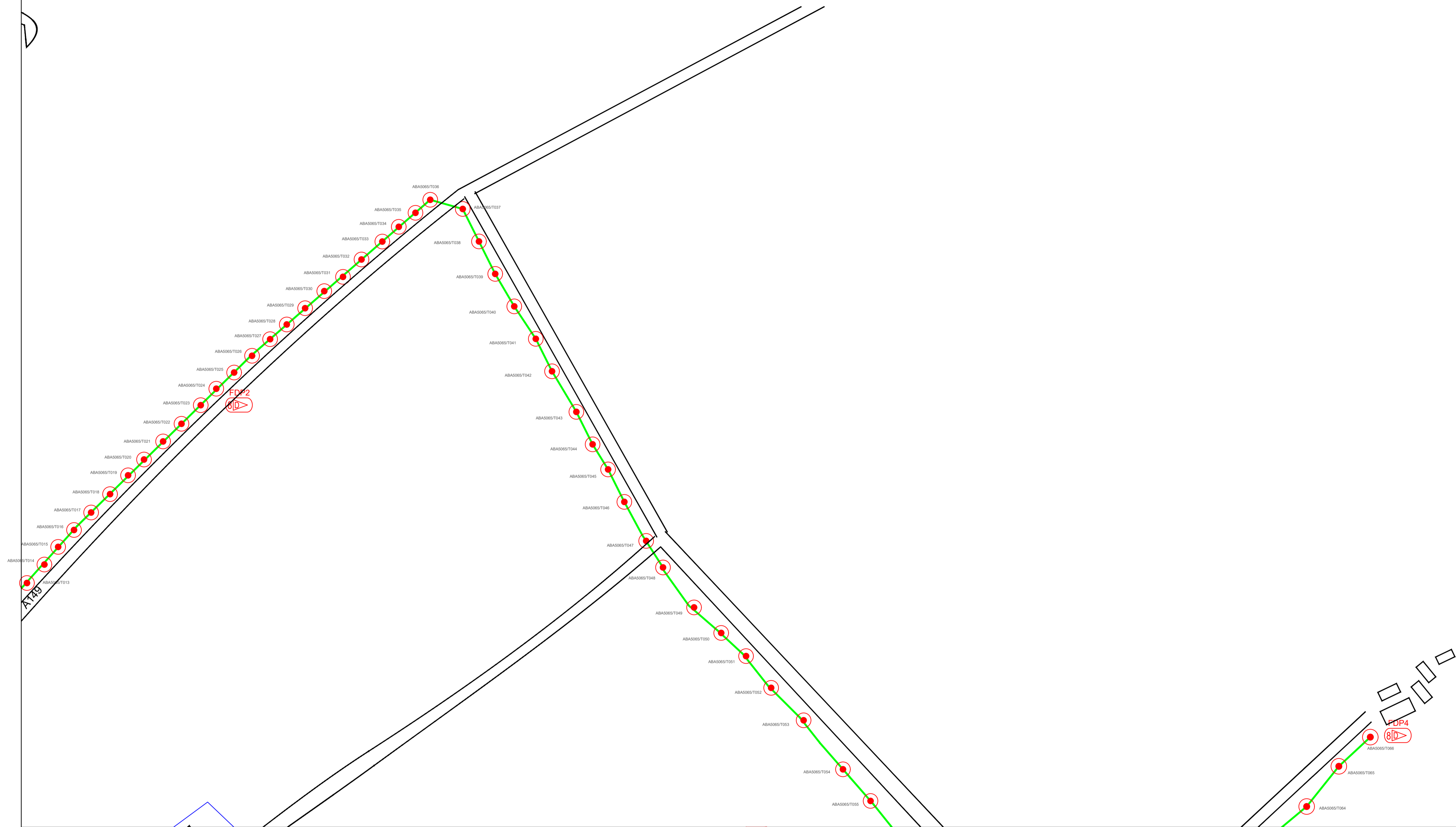
SUPPLY, INSTALLATION AND COMMISSIONING OF FTX NETWORK INFRASTRUCTURE FOR ALLO TECHNOLOGY SDN BHD POP 2 PROJECT (D-SIDE) – PMU TINT FOR ABA5065 SEKOLAH KEBANGSAAN SUNGAI TUKANG SIDIN

DRAWING TITLE:

LAYOUT PLAM – SK SUNGAI TUKANG SIDIN

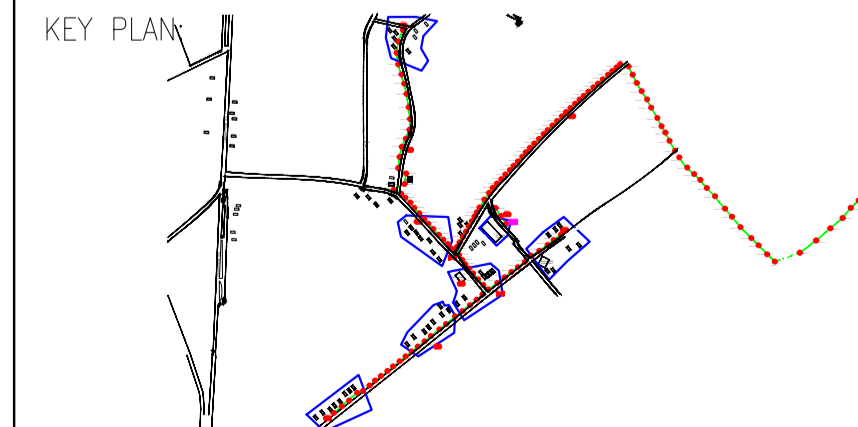
PROJECT PHASE:

Design By : T&H PANJI EMPIRE	Date : 11/12/2024
Drawn By : FAKHRUL	Scale : 1 : 10
Checked By :	Job Number : 60
DRAWING NUMBER :	Sheet : 24
THIS PRINT AND ITS COPYRIGHT ARE THE PROPERTY OF T&H PANJI EMPIRE SDN BHD	
Size : A1	



	12C FOC	Installed 1:4 / 1:8 / 1:32 splitter		Installed Pole (9m)		Suspension		New Manhole (PIT)		Micro-Trenching (Meter)		MH NO.
	24C FOC	Installed Patch Cord		Installed Pole (7.5M)		Tension		New Manhole(JRC7)		Temporary Infra (Meter)		Existing TNB Pole NO.
	48C FOC	FDC		Installed Pole (6.7M)		Pole Ring		FDP Boundary		Loop / Coil (Meter)		New Pole NO.
	96C FOC	Closure		Existing TNB Pole		FDP with (1:8) splitter		HDD (Meter)		Active Outdoor Cabinet		Closure NO.
	144C FOC	Existing Closure		Installed Riser		Existing Manhole		Open Cut (Meter)		FDC NO.		FDP NO.

ACTUAL HOMEPASS : 88




PROJECT OWNER:




KEMENTERIAN KOMUNIKASI DAN DIGITAL


MAIN CONTRACTOR:



187475-V



SUB-CONTRACTOR:



T&H PANJI EMPIRE SDN BHD  
39A, Jalan Jelapang 5,  
Pusat Komersial,  
Jelapang, 30020 Ipoh, Perak  
TEL: 013-418 4046

PROJECT TITLE:

SUPPLY, INSTALLATION AND COMMISSIONING OF FTTH NETWORK INFRASTRUCTURE FOR ALLO TECHNOLOGY SDN BHD POP 2 PROJECT (D-SIDE) – PMU TINT FOR ABA5065 SEKOLAH KEBANGSAAN SUNGAI TUKANG SIDIN

DRAWING TITLE:

LAYOUT PLAM – SK SUNGAI TUKANG SIDIN

PROJECT PHASE:

Design By : T&H PANJI EMPIRE	Date : 11/12/2024
Drawn By : FAKHRUL	Scale : 1 : 10
Checked By :	Job Number : 60
DRAWING NUMBER :	Sheet : 1/4
THIS PRINT AND ITS COPYRIGHT ARE THE PROPERTY OF T&H PANJI EMPIRE SDN BHD	
	Size : A1