

TECHNICAL PROPOSAL

POP2 ABA9016 SEKOLAH KEBANGSAAN CHANGKAT TUALANG (D-SIDE)

Company Name	:	WCWL COMMUNICATIONS SDN BHD
Company Address	:	127, Jalan PUJ 3/3, Taman Puncak Jalil 43300 Subang Jaya Selangor
Prepared By	:	Nur Syahidah Izzatie
Date	:	15/11/2024



POINT A

POINT B

Starting Point

Site / Boundary Name	:	SEKOLAH KEBANGSAAN CHANGKAT TUALANG
Address	:	Kota Baharu
District	:	Gopeng
Postcode	:	31610
State	:	Perak
GPS Coordinate	:	4.425134, 101.088151
LRD	:	A

End Point

Site / Boundary Name	:	SEKOLAH KEBANGSAAN CHANGKAT TUALANG
Address	:	Kampung Changkat Tualang, Kota Bharu
District	:	Gopeng
Postcode	:	31610
State	:	Perak
GPS Coordinate	:	4.414567, 101.084473
LRD	:	B



PROJEK PENYEDIAAN DAN PENYELENGGARAAN POINT OF PRESENCE (POP) FASA 2: HAB INFRASTRUKTUR GENTIAN OPTIK BERHAMPIRAN DENGAN SEKOLAH, KAWASAN PERINDUSTRIAN, PREMIS KERAJAAN DAN KOMUNITI SEKITARNYA OLEH KEMENTERIAN KOMUNIKASI MALAYSIA - ZON UTARA (KKMM.400-11/17/132(1))



Work Summary

No	Proposed Distance and Method	Unit	Qty
1	Horizontal Directional Drilling (HDD)	m	0
2	Carriage Way Open trench (CW)	m	0
3	Grass Verge Open Trenching (GV)	m	0
4	Micro trenching (MT)	m	0
	Total		0

	Other Information	Unit	Qty
1	Proposed Manhole	EA	0
2	Proposed Pole	EA	89
3	Joint Closure	EA	4
4	Estimated time required for completion	days	30



PROJEK PENYEDIAAN DAN PENYELENGGARAAN POINT OF PRESENCE (POP) FASA 2: HAB INFRASTRUKTUR GENTIAN OPTIK BERHAMPIRAN DENGAN SEKOLAH, KAWASAN PERINDUSTRIAN, PREMIS KERAJAAN DAN KOMUNITI SEKITARNYA OLEH KEMENTERIAN KOMUNIKASI MALAYSIA - ZON UTARA (KKMM.400-11/17/132(1))



Local Authority Summary

1. Daerah Kampar

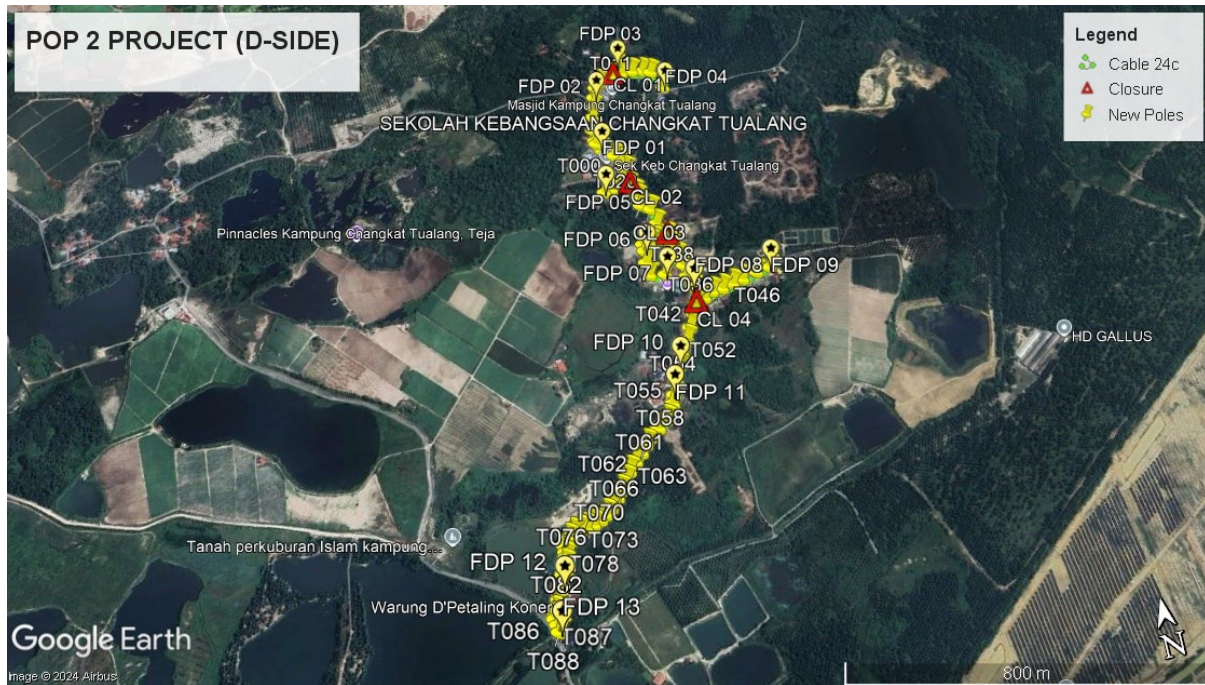
Bil	Items	Owner	Quantity	Distance(m)
1	HDD	JKR	-	-
		Majlis	-	-
		Estate / Private Land	-	-
2	New Pole	JKR	-	-
		Majlis	89pcs	2419m
		Estate / Private Land	-	-
3	Existing TNB Pole	JKR	-	-
		Majlis	-	-
		Estate / Private Land	-	-
Total				2419m

Site Plan – KMZ (Overview site area)

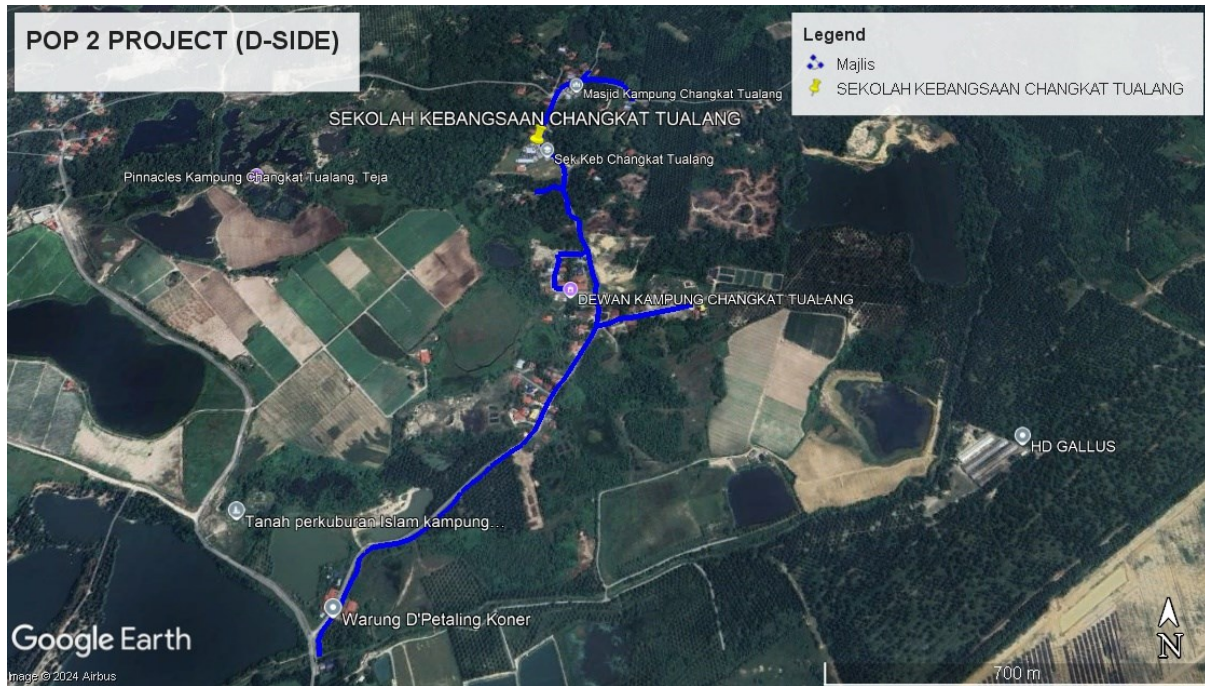
Proposed FDP and Closure



Proposed New Pole



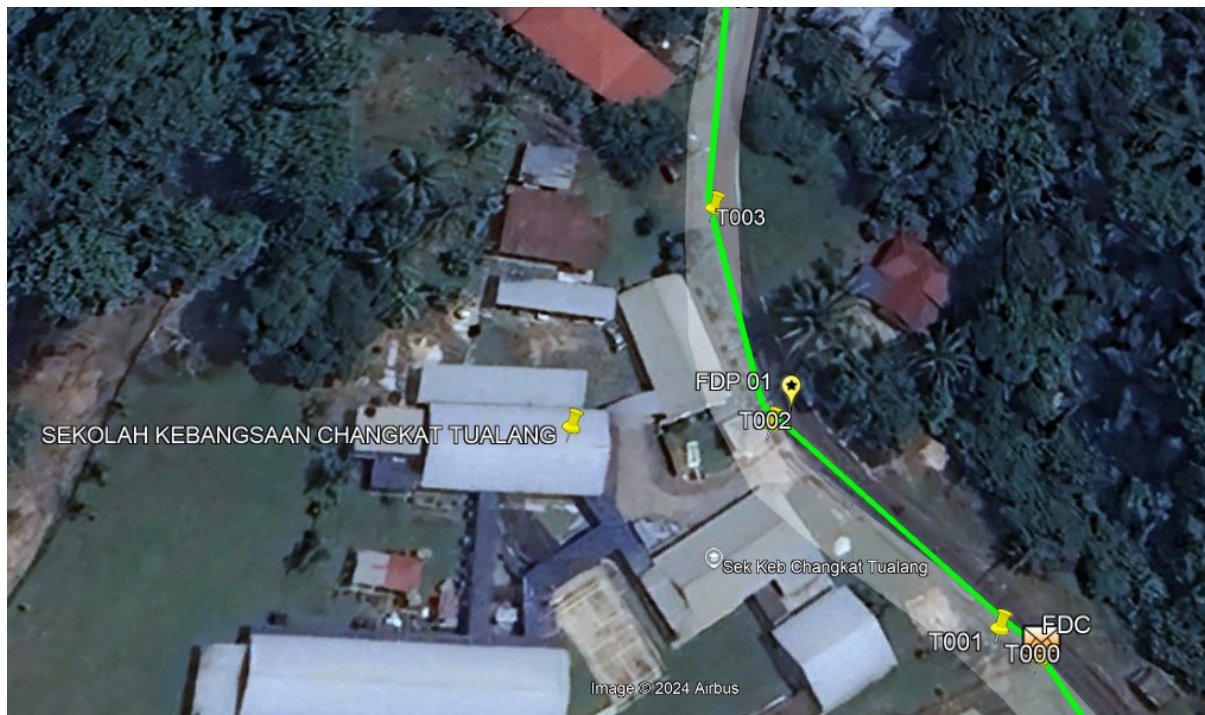
Site Plan – KMZ Routing (All Local Authority)



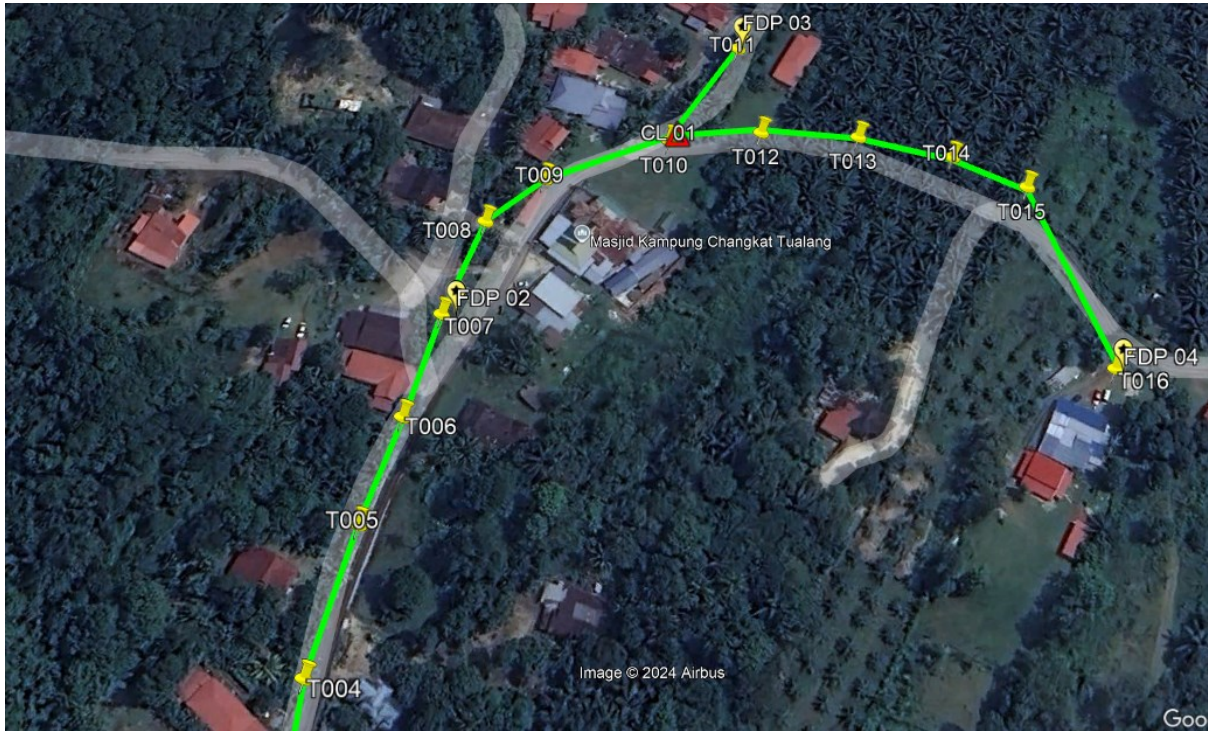
Blue - Majlis Perbandaran Kampar

Site Plan – KMZ Routing (All site area)

Route 1

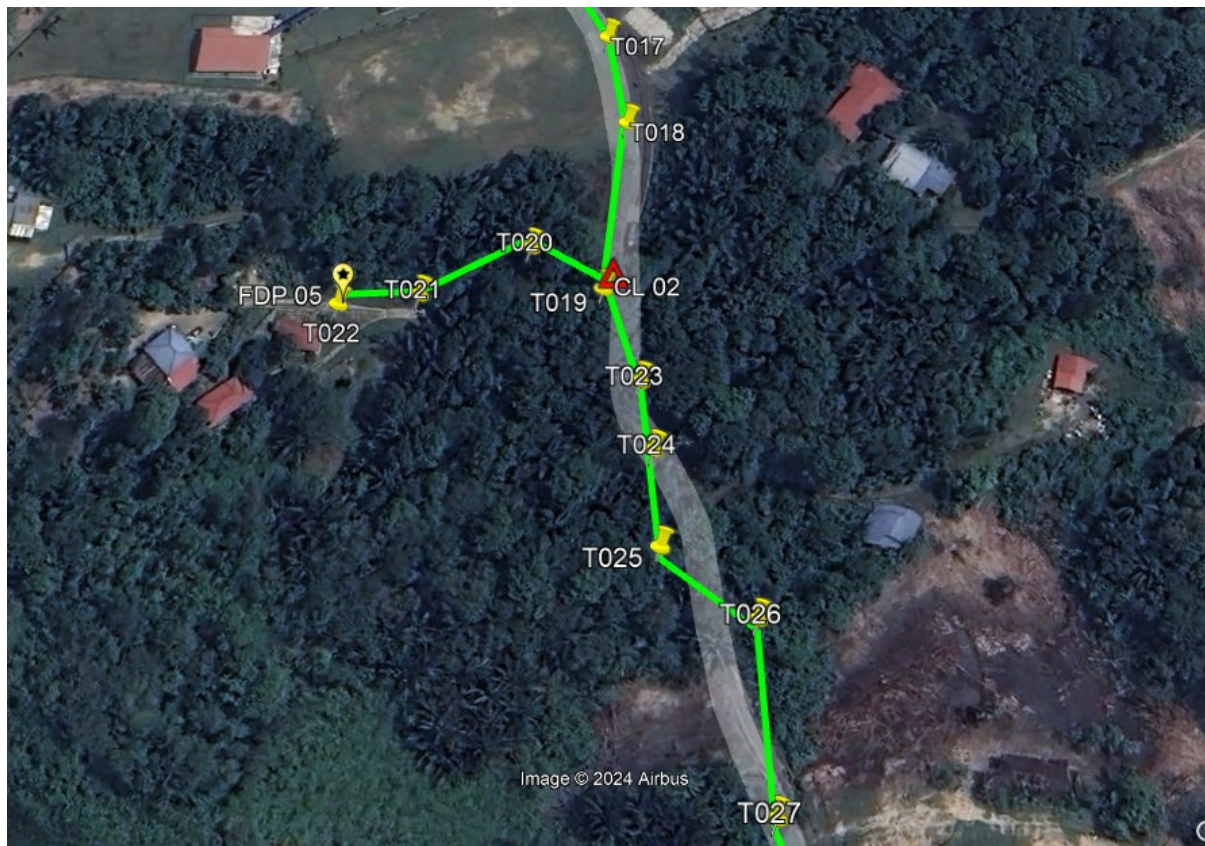


Route 1.1

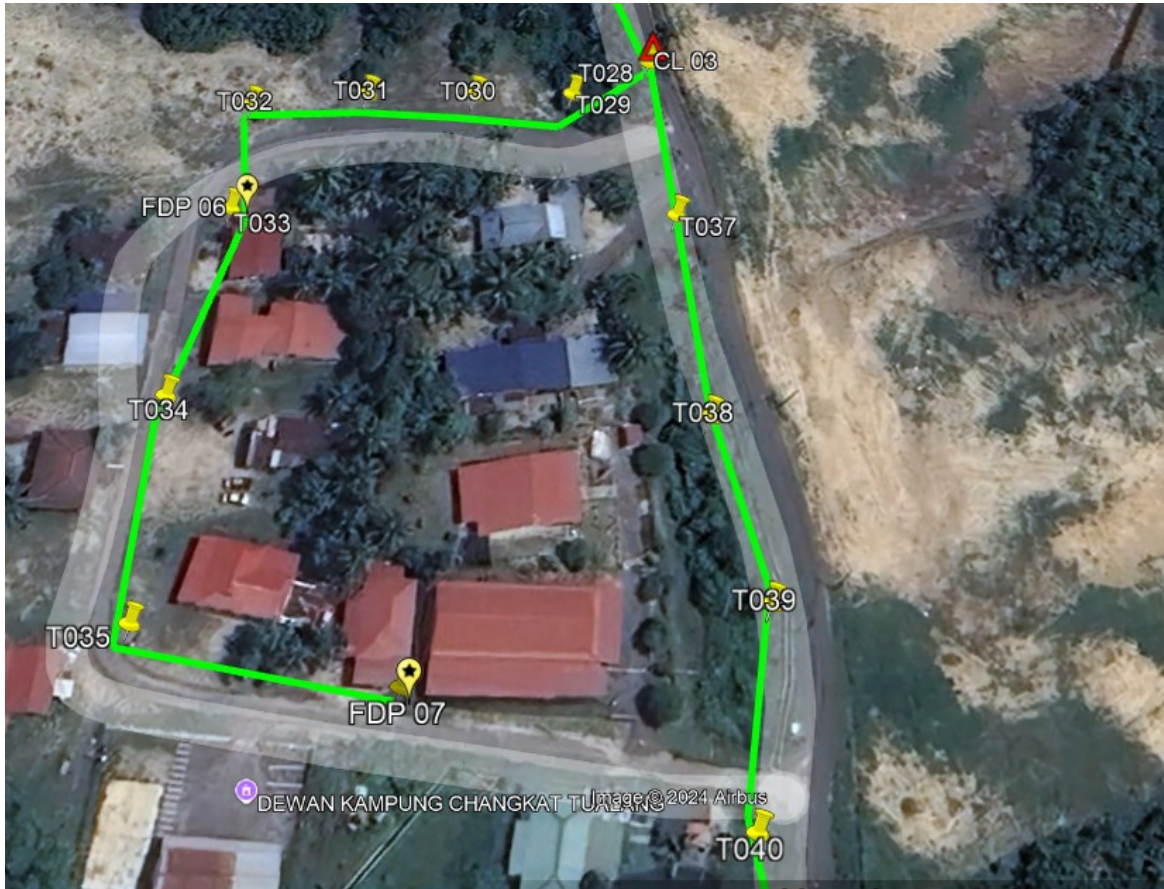


Route 1.2

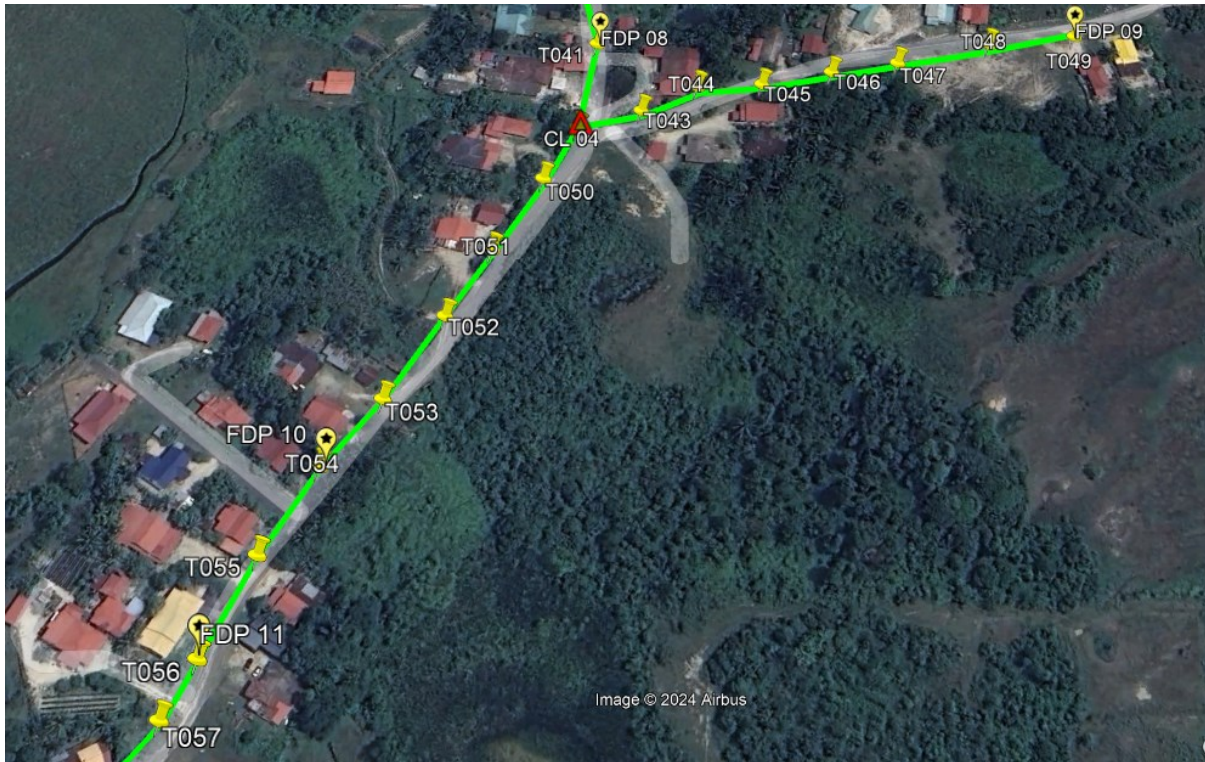
Route 2



Route 2.1



Route 2.2



Route 2.3

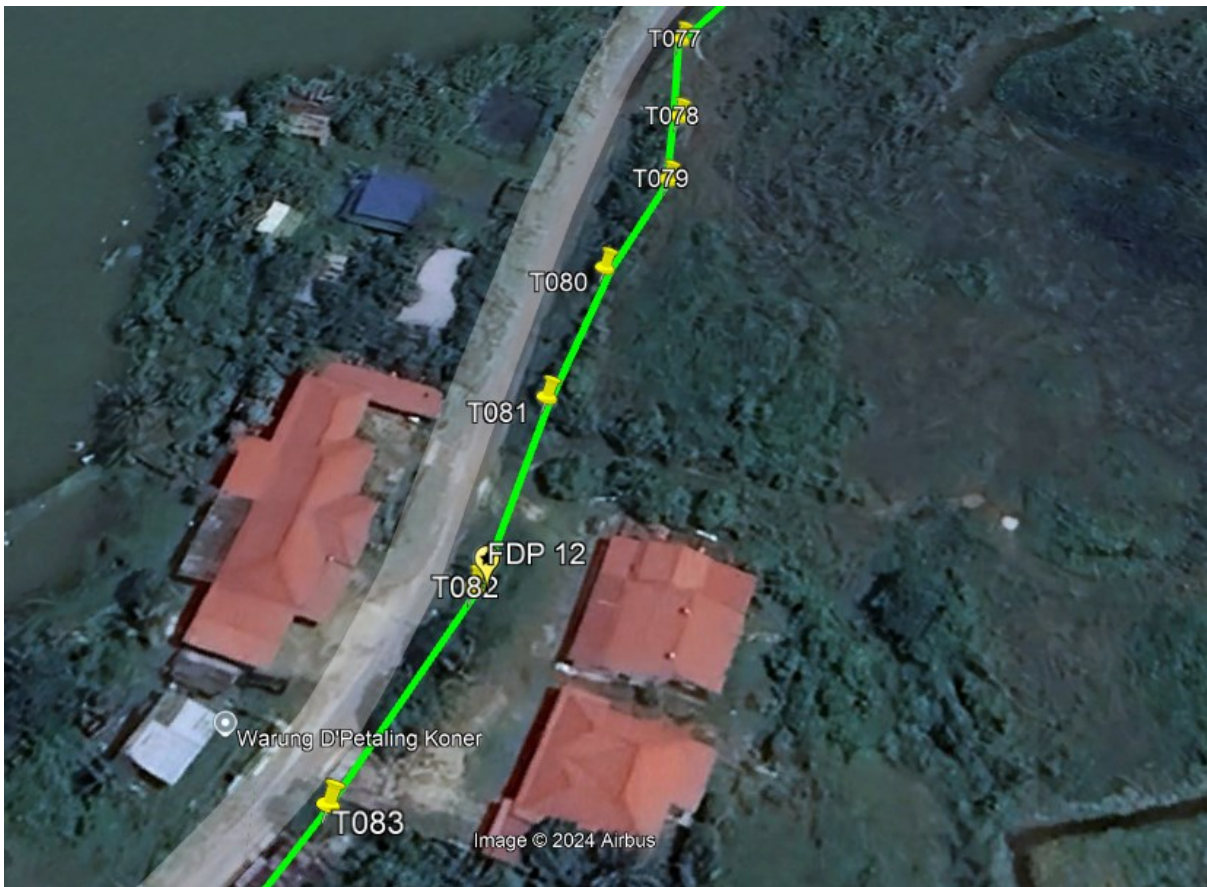
Route 3



Route 3.1



Route 3.2

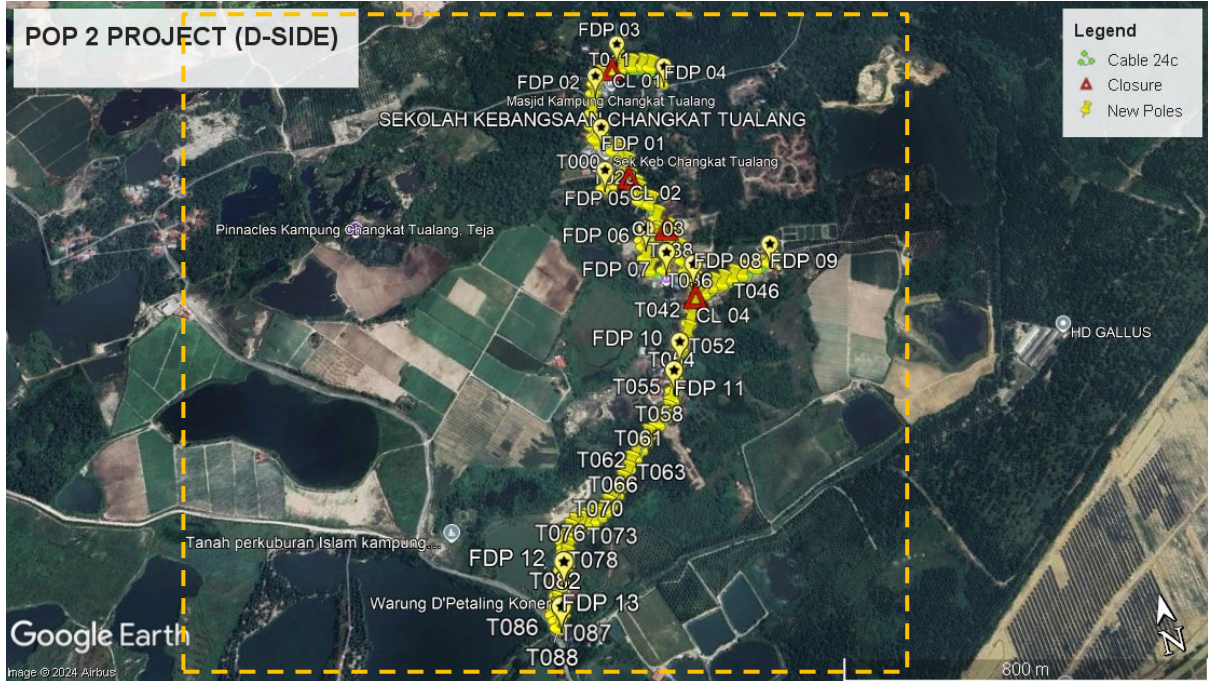


Route 3.3



Route 3.4

Site Plan – KMZ Routing (Proposed new Pole)





PROJEK PENYEDIAAN DAN PENYELENGGARAAN POINT OF PRESENCE (POP) FASA 2: HAB INFRASTRUKTUR GENTIAN OPTIK BERHAMPIRAN DENGAN SEKOLAH, KAWASAN PERINDUSTRIAN, PREMIS KERAJAAN DAN KOMUNITI SEKITARNYA OLEH KEMENTERIAN KOMUNIKASI MALAYSIA - ZON UTARA (KKMM.400-11/17/132(1))



Overall Pole (Proposed New)

No.	Pole & Manhole ID	Distance	Latitude	Longitude	Local Authority
1	T000	0.00	4.456241449	101.1833045	Majlis Perbandaran Kampar
2	T001	56.27	4.456286883	101.1838079	Majlis Perbandaran Kampar
3	T002	45.27	4.455886772	101.1838804	Majlis Perbandaran Kampar
4	T003	23.96	4.455914993	101.1840938	Majlis Perbandaran Kampar
5	T004	26.61	4.455927123	101.1843326	Majlis Perbandaran Kampar
6	T005	31.26	4.455978205	101.1846087	Majlis Perbandaran Kampar
7	T006	28.44	4.456014622	101.1848616	Majlis Perbandaran Kampar
8	T007	35.35	4.456033859	101.1851785	Majlis Perbandaran Kampar
9	T008	34.50	4.456048991	101.1854881	Majlis Perbandaran Kampar
10	T009	40.93	4.456111911	101.1858503	Majlis Perbandaran Kampar
11	T010	43.89	4.456169791	101.1862403	Majlis Perbandaran Kampar
12	T011	41.20	4.456233925	101.1866049	Majlis Perbandaran Kampar
13	T012	31.23	4.456261798	101.186884	Majlis Perbandaran Kampar
14	T013	36.44	4.456275543	101.187211	Majlis Perbandaran Kampar
15	T014	57.72	4.45636152	101.1877224	Majlis Perbandaran Kampar
16	T015	41.75	4.456372595	101.1880973	Majlis Perbandaran Kampar
17	T016	16.02	4.456323656	101.1882326	Majlis Perbandaran Kampar
18	T017	40.47	4.456059059	101.1879833	Majlis Perbandaran Kampar
19	T018	40.72	4.455807568	101.1882489	Majlis Perbandaran Kampar
20	T019	36.05	4.455577914	101.1884772	Majlis Perbandaran Kampar
21	T020	20.44	4.455413864	101.1883947	Majlis Perbandaran Kampar
22	T021	58.13	4.455398405	101.1878727	Majlis Perbandaran Kampar



PROJEK PENYEDIAAN DAN PENYELENGGARAAN POINT OF PRESENCE (POP) FASA 2: HAB INFRASTRUKTUR GENTIAN OPTIK BERHAMPIRAN DENGAN SEKOLAH, KAWASAN PERINDUSTRIAN, PREMIS KERAJAAN DAN KOMUNITI SEKITARNYA OLEH KEMENTERIAN KOMUNIKASI MALAYSIA - ZON UTARA (KKMM.400-11/17/132(1))



23	T022	26.67	4.455331587	101.1876426	Majlis Perbandaran Kampar
24	T023	113.89	4.455285029	101.1886646	Majlis Perbandaran Kampar
25	T024	29.85	4.455241302	101.1889292	Majlis Perbandaran Kampar
26	T025	29.60	4.455223855	101.1891945	Majlis Perbandaran Kampar
27	T026	38.27	4.455184121	101.189536	Majlis Perbandaran Kampar
28	T027	27.00	4.455151092	101.1897763	Majlis Perbandaran Kampar
29	T028	33.32	4.455355098	101.1899954	Majlis Perbandaran Kampar
30	T029	21.79	4.455515299	101.1901078	Majlis Perbandaran Kampar
31	T030	25.64	4.455600329	101.1903218	Majlis Perbandaran Kampar
32	T031	28.94	4.455430872	101.190519	Majlis Perbandaran Kampar
33	T032	43.78	4.455250833	101.1908687	Majlis Perbandaran Kampar
34	T033	25.42	4.455174013	101.1910838	Majlis Perbandaran Kampar
35	T034	32.79	4.455088677	101.1913657	Majlis Perbandaran Kampar
36	T035	26.77	4.4551695	101.1915921	Majlis Perbandaran Kampar
37	T036	33.36	4.455393011	101.1917918	Majlis Perbandaran Kampar
38	T037	24.60	4.455466433	101.1920002	Majlis Perbandaran Kampar
39	T038	43.86	4.455521807	101.1923903	Majlis Perbandaran Kampar
40	T039	30.44	4.455608042	101.1926498	Majlis Perbandaran Kampar
41	T040	33.02	4.455619239	101.1929462	Majlis Perbandaran Kampar
42	T041	36.66	4.455837953	101.1931924	Majlis Perbandaran Kampar
43	T042	39.26	4.456155517	101.1933459	Majlis Perbandaran Kampar
44	T043	30.75	4.456423488	101.1934129	Majlis Perbandaran Kampar
45	T044	27.39	4.45662751	101.1932754	Majlis Perbandaran Kampar
46	T045	26.56	4.456779427	101.1930914	Majlis Perbandaran Kampar

47	T046	25.16	4.456896675	101.1928982	Majlis Perbandaran Kampar
48	T047	33.46	4.457039989	101.192634	Majlis Perbandaran Kampar
49	T048	38.46	4.457213632	101.1923353	Majlis Perbandaran Kampar
50	T049	37.88	4.457384608	101.1920411	Majlis Perbandaran Kampar
51	T050	50.11	4.457565372	101.1916289	Majlis Perbandaran Kampar
52	T051	24.84	4.457701983	101.1914525	Majlis Perbandaran Kampar
53	T052	14.95	4.45781603	101.1915235	Majlis Perbandaran Kampar
54	T053	24.86	4.457888805	101.1913123	Majlis Perbandaran Kampar
55	T054	26.65	4.458002353	101.1911016	Majlis Perbandaran Kampar
56	T055	25.37	4.458106701	101.1908989	Majlis Perbandaran Kampar
57	T056	22.74	4.458208842	101.190722	Majlis Perbandaran Kampar
58	T057	29.56	4.458398309	101.1905359	Majlis Perbandaran Kampar
59	T058	28.21	4.458553242	101.1903353	Majlis Perbandaran Kampar
60	T059	35.00	4.45874083	101.190083	Majlis Perbandaran Kampar
61	T060	30.33	4.458929269	101.1898862	Majlis Perbandaran Kampar
62	T061	36.49	4.459071229	101.1895908	Majlis Perbandaran Kampar
63	T062	31.25	4.459192138	101.1893375	Majlis Perbandaran Kampar
64	T063	26.60	4.459340348	101.18915	Majlis Perbandaran Kampar
65	T064	27.05	4.459415602	101.188919	Majlis Perbandaran Kampar
66	T065	29.47	4.459500135	101.1886681	Majlis Perbandaran Kampar
67	T066	30.82	4.45964176	101.1884302	Majlis Perbandaran Kampar
68	T067	31.15	4.459772135	101.1881826	Majlis Perbandaran Kampar
69	T068	46.85	4.459944463	101.1877987	Majlis Perbandaran Kampar
70	T069	35.27	4.460111447	101.1875295	Majlis Perbandaran Kampar

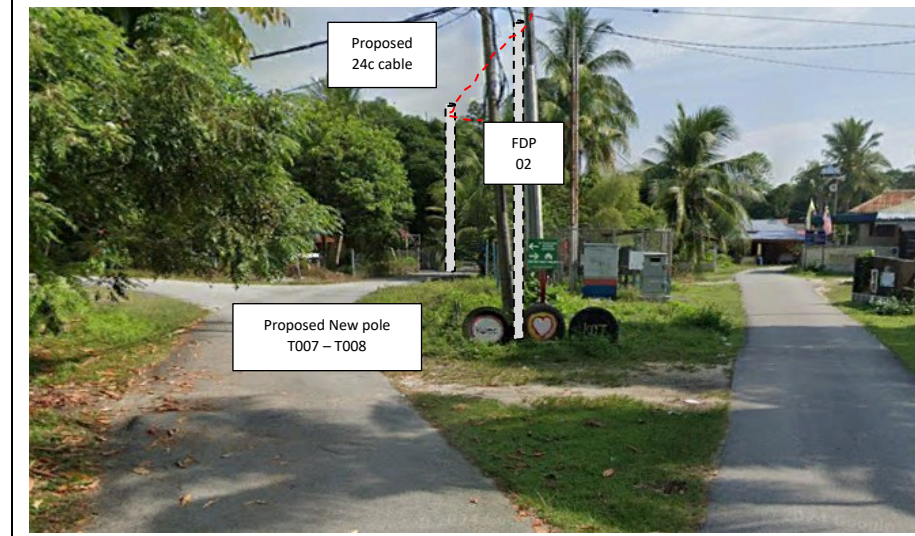
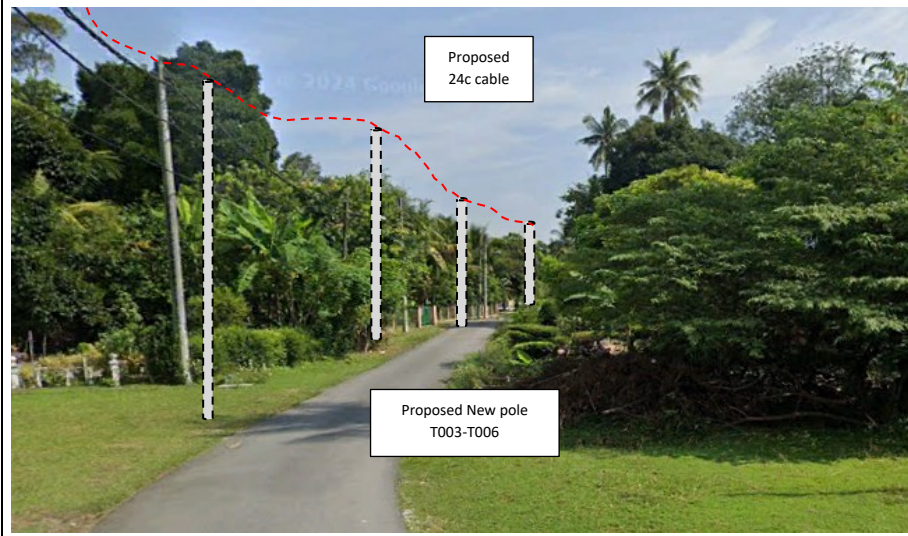
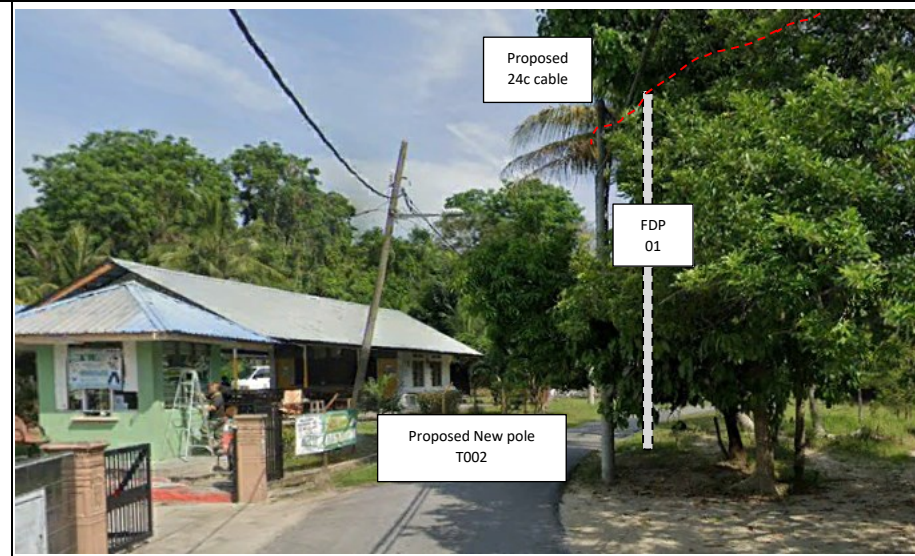
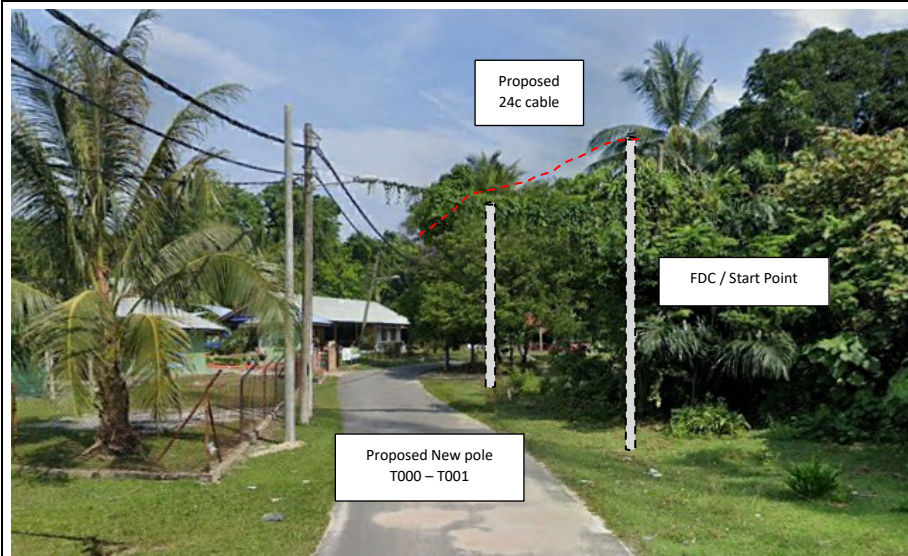


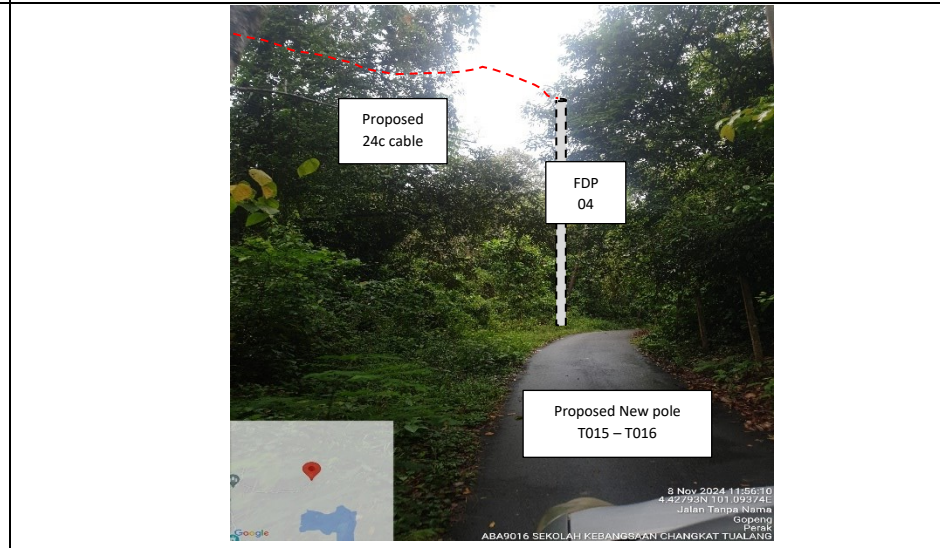
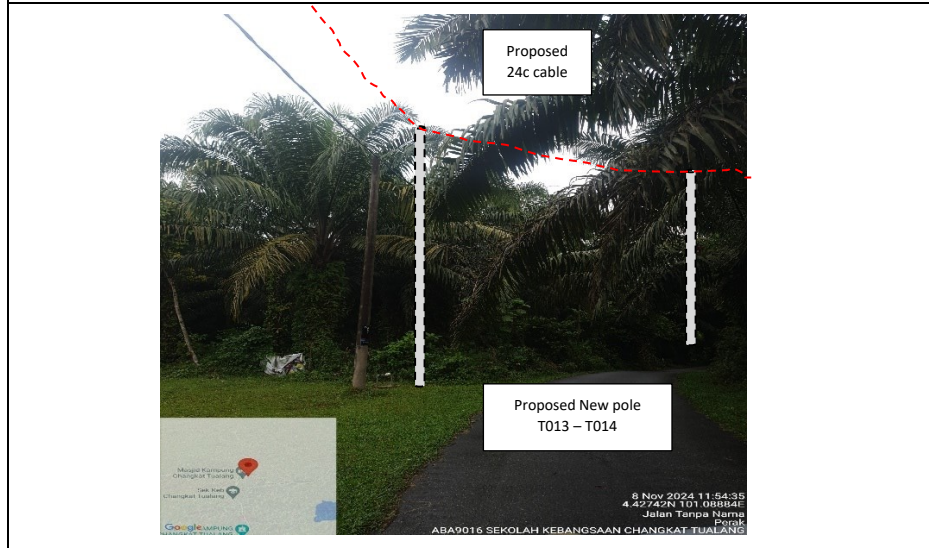
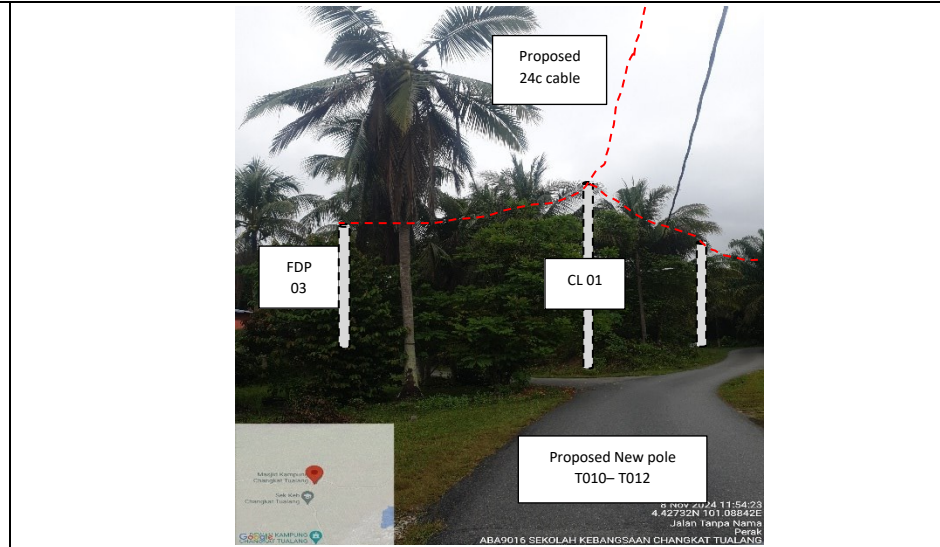
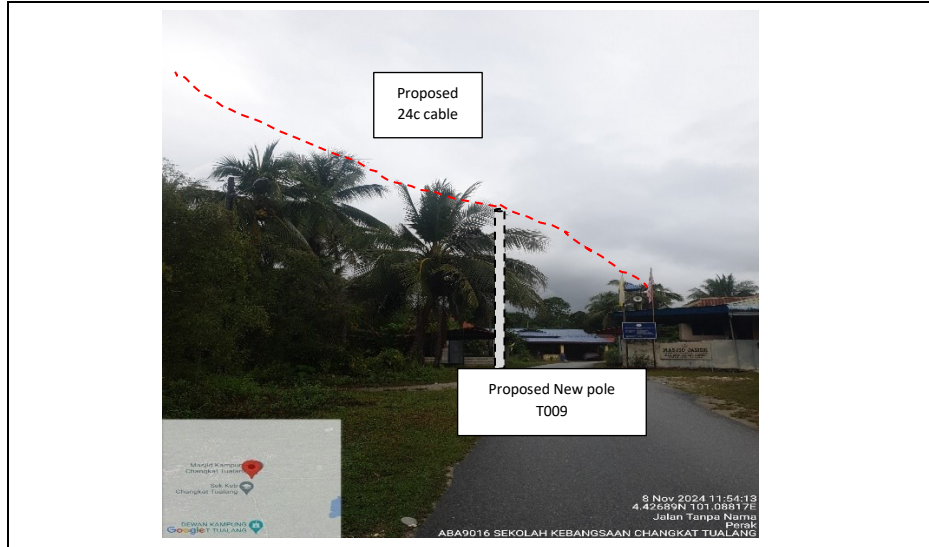
PROJEK PENYEDIAAN DAN PENYELENGGARAAN POINT OF PRESENCE (POP) FASA 2: HAB INFRASTRUKTUR GENTIAN OPTIK BERHAMPIRAN DENGAN SEKOLAH, KAWASAN PERINDUSTRIAN, PREMIS KERAJAAN DAN KOMUNITI SEKITARNYA OLEH KEMENTERIAN KOMUNIKASI MALAYSIA - ZON UTARA (KKMM.400-11/17/132(1))

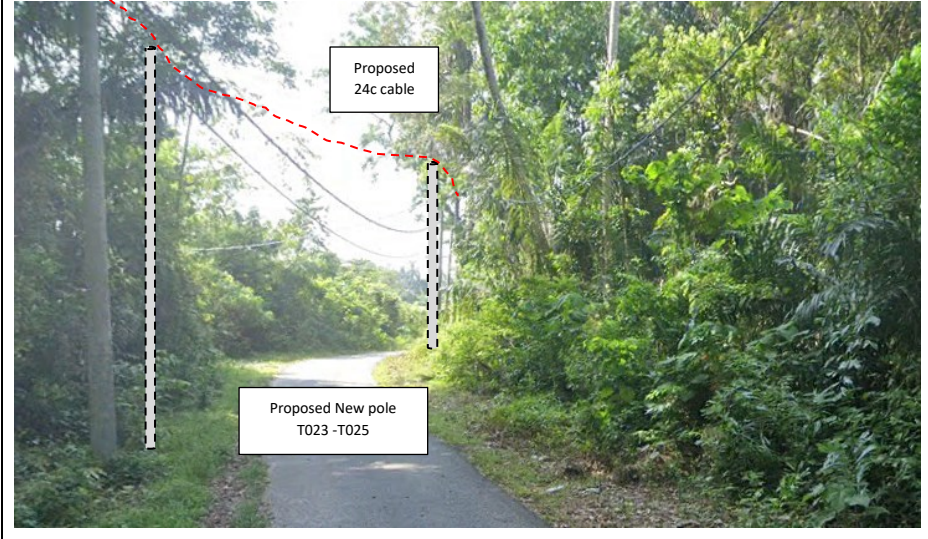
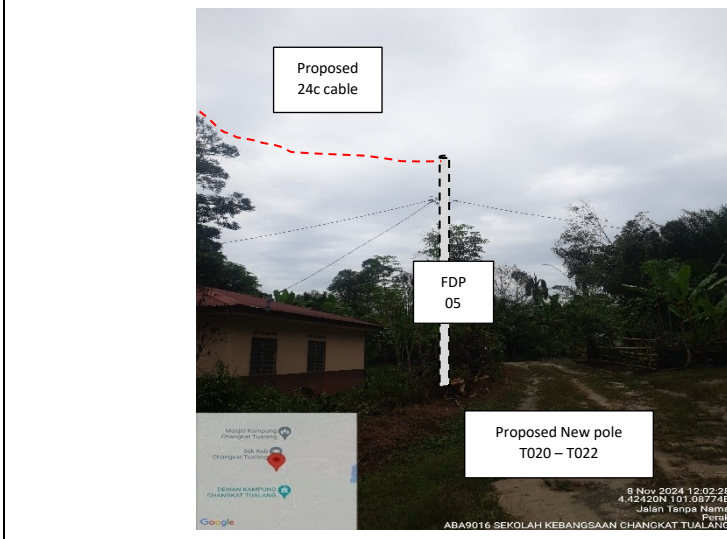
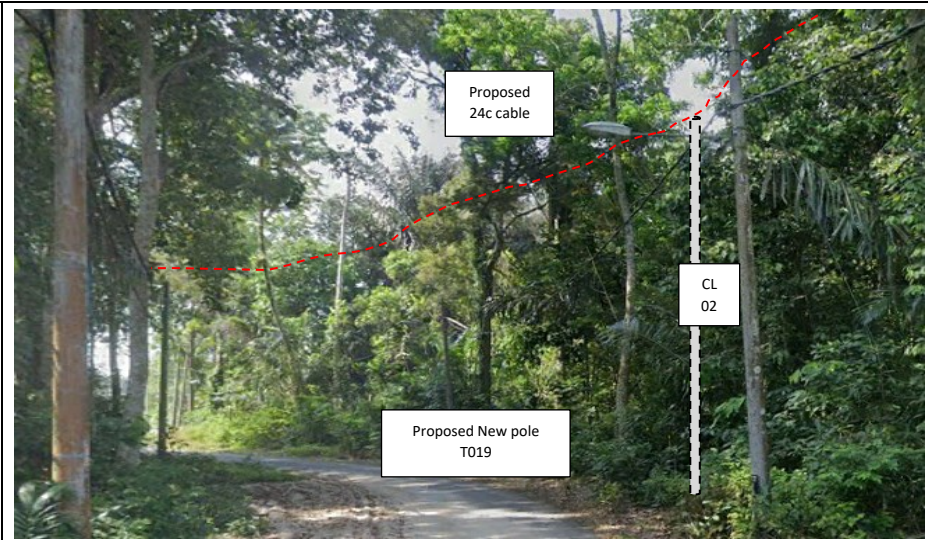
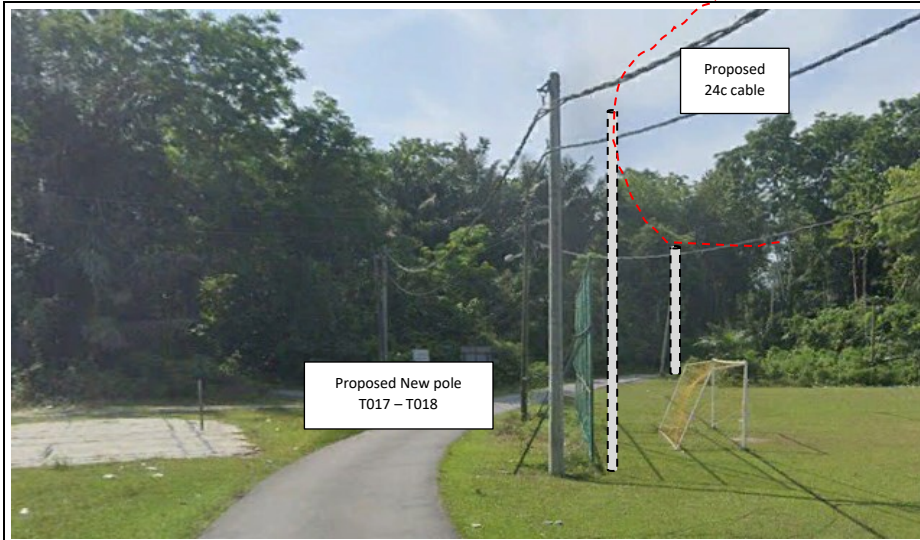


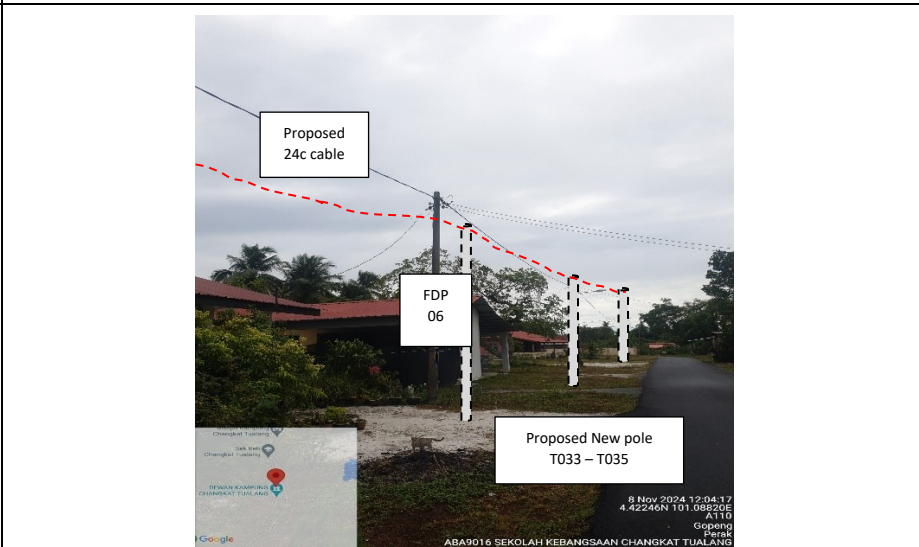
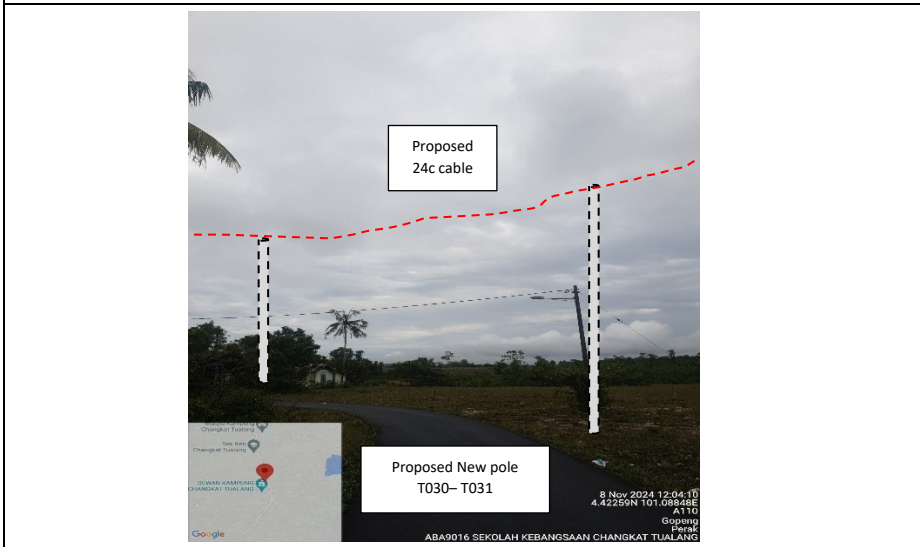
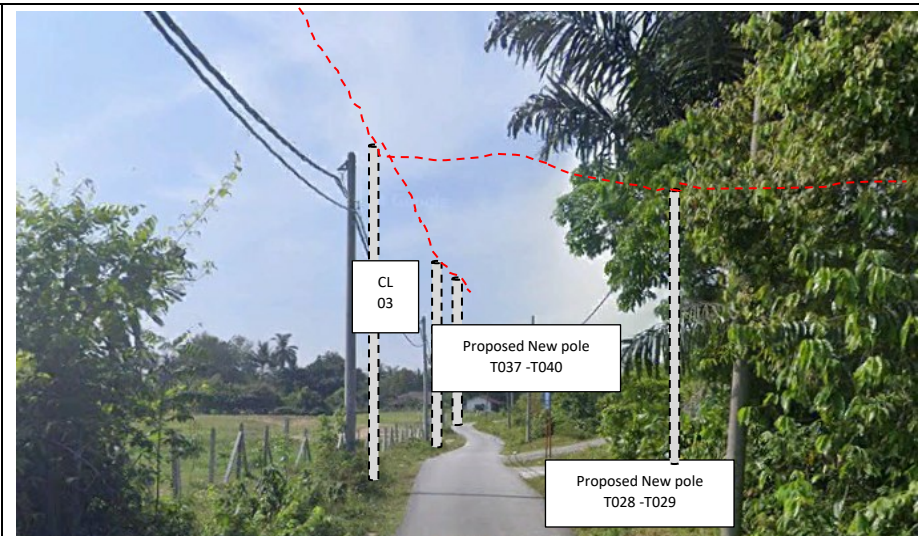
71	T070	25.18	4.460195902	101.1873196	Majlis Perbandaran Kampar
72	T071	26.04	4.460316372	101.1871191	Majlis Perbandaran Kampar
73	T072	28.97	4.460418679	101.1868798	Majlis Perbandaran Kampar
74	T073	37.69	4.46058335	101.186584	Majlis Perbandaran Kampar
75	T074	26.17	4.460690546	101.1863748	Majlis Perbandaran Kampar
76	T075	38.32	4.460857248	101.1860736	Majlis Perbandaran Kampar
77	T076	37.88	4.461020024	101.1857748	Majlis Perbandaran Kampar
78	T077	44.35	4.461205991	101.1854226	Majlis Perbandaran Kampar
79	T078	44.85	4.461391359	101.1850649	Majlis Perbandaran Kampar
80	T079	42.21	4.461568828	101.1847298	Majlis Perbandaran Kampar
81	T080	38.88	4.461742369	101.1844267	Majlis Perbandaran Kampar
82	T081	39.90	4.461914285	101.1841122	Majlis Perbandaran Kampar
83	T082	48.83	4.462121153	101.1837254	Majlis Perbandaran Kampar
84	T083	47.47	4.462315484	101.1833458	Majlis Perbandaran Kampar
85	T084	42.19	4.46247529	101.1830021	Majlis Perbandaran Kampar
86	T085	45.75	4.462664301	101.1826372	Majlis Perbandaran Kampar
87	T086	41.30	4.462824254	101.1823025	Majlis Perbandaran Kampar
88	T087	34.12	4.462972685	101.1820343	Majlis Perbandaran Kampar
89	T088	35.88	4.463124612	101.18175	Majlis Perbandaran Kampar

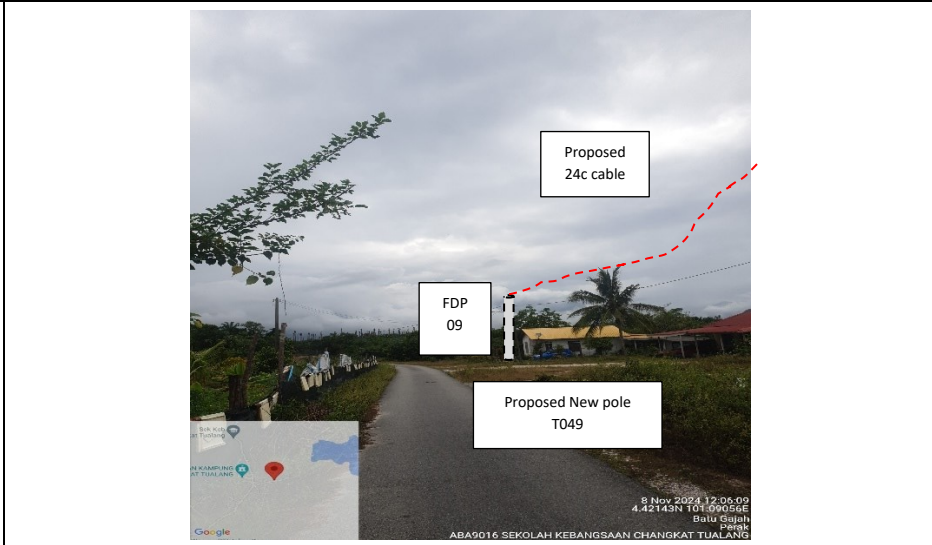
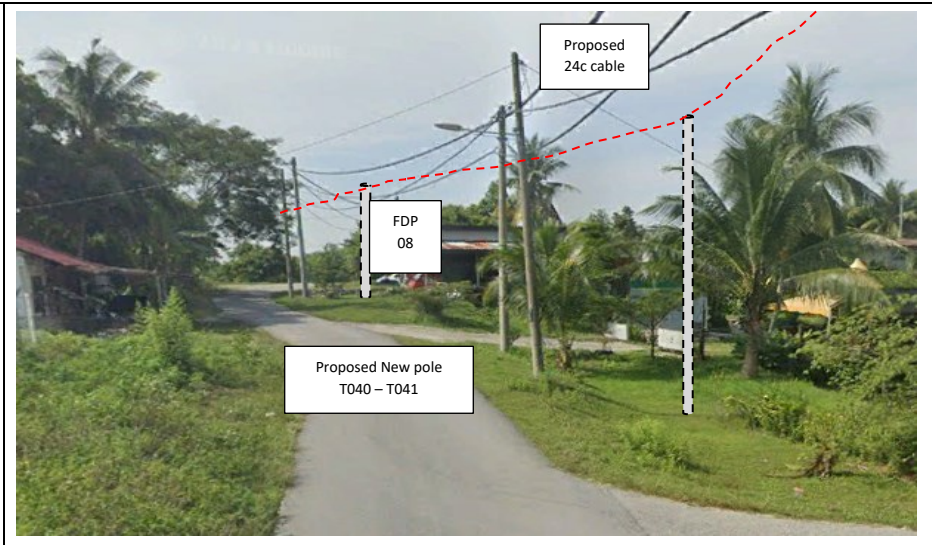
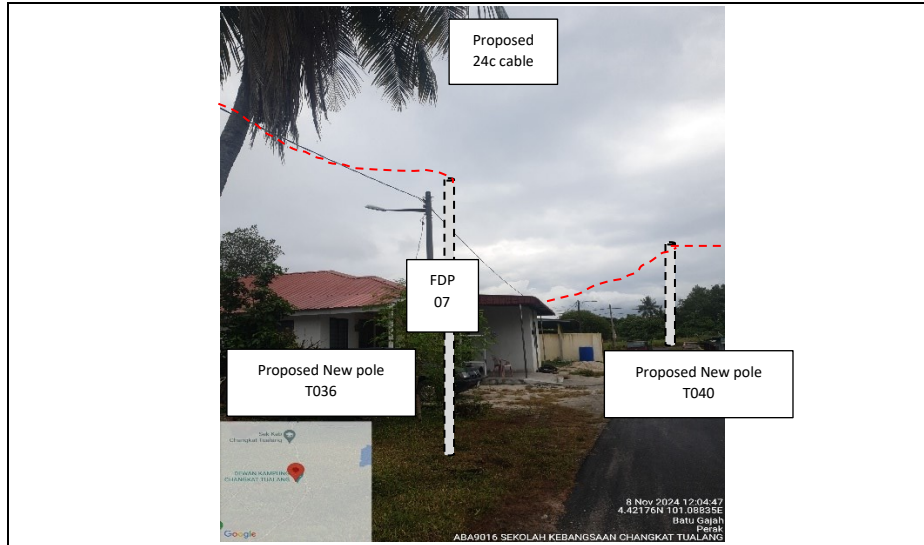
Site Photos – Proposed to install pole

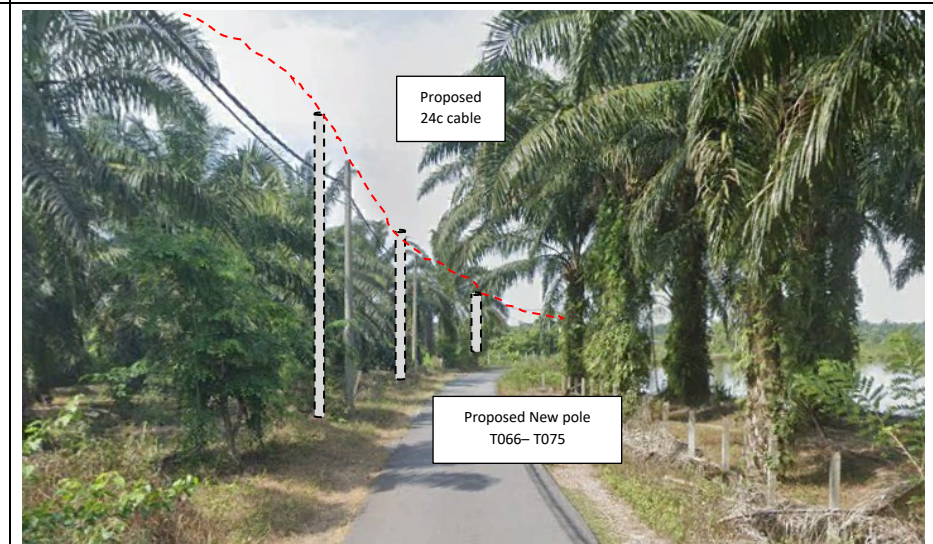
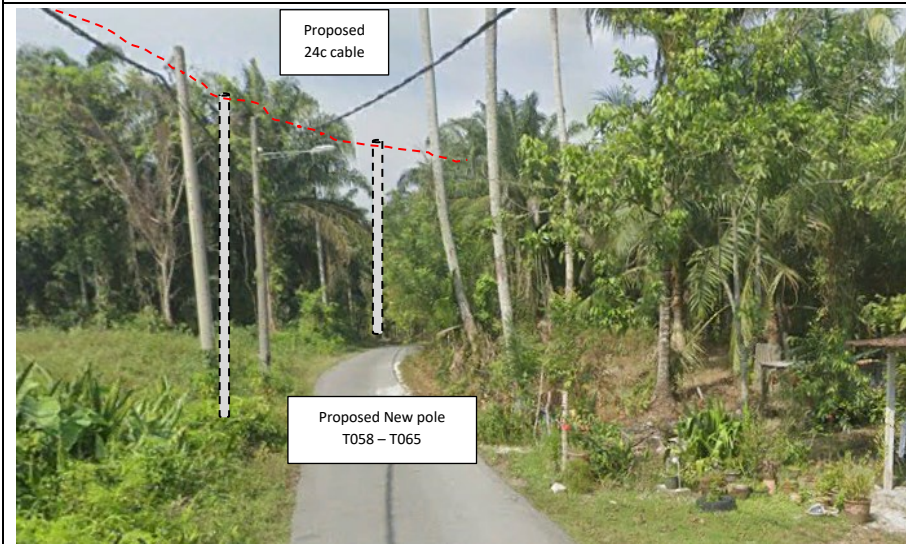
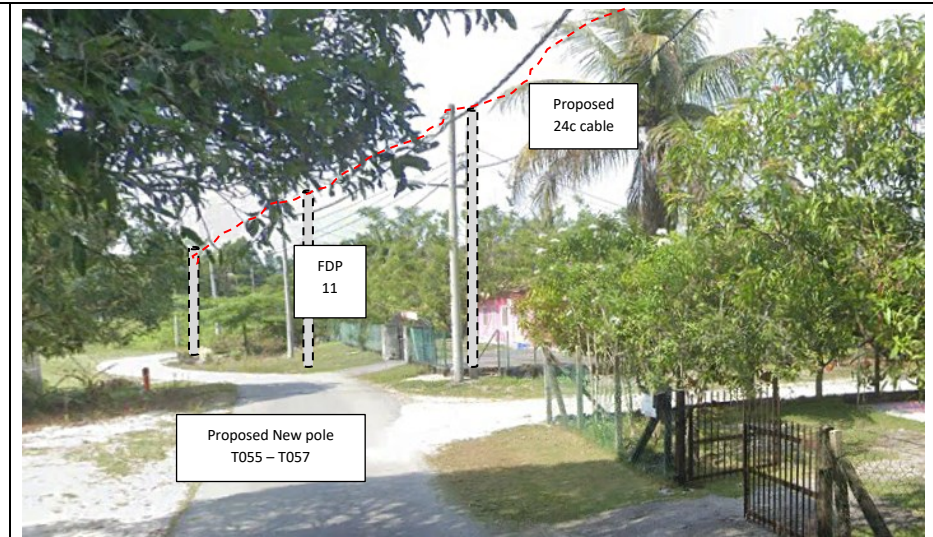
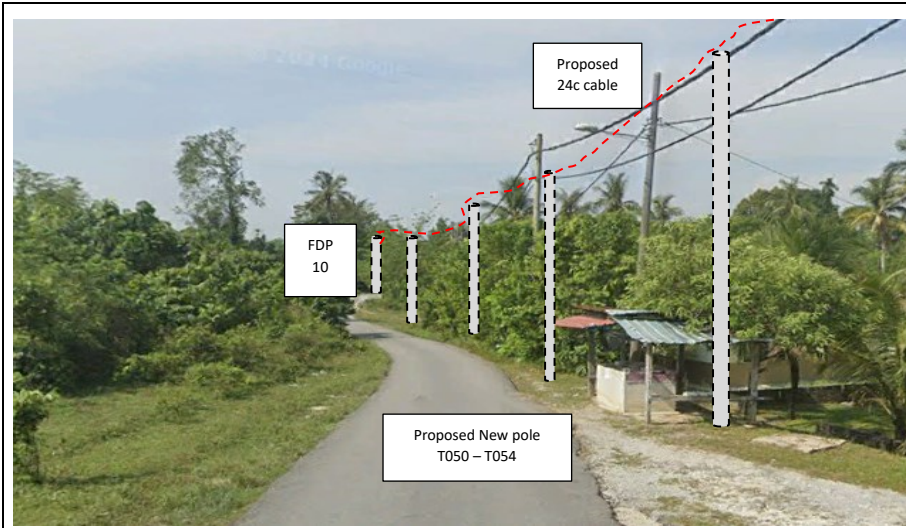


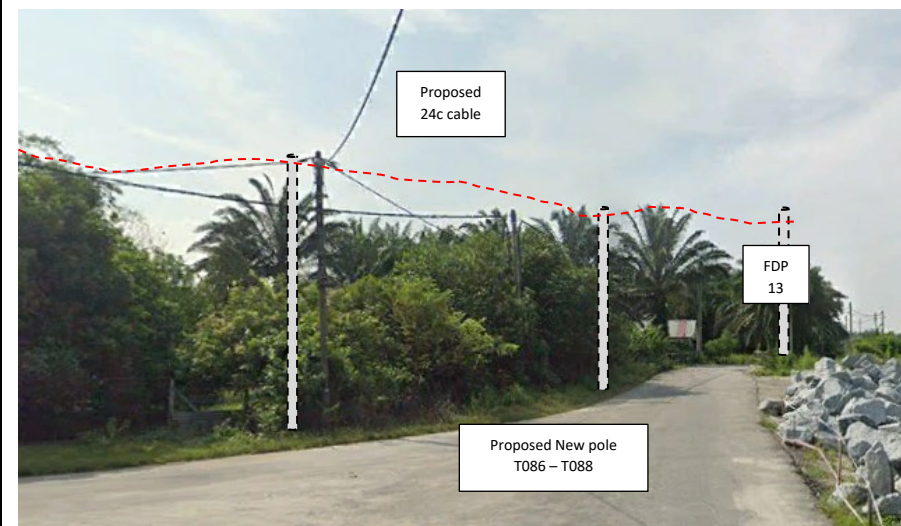
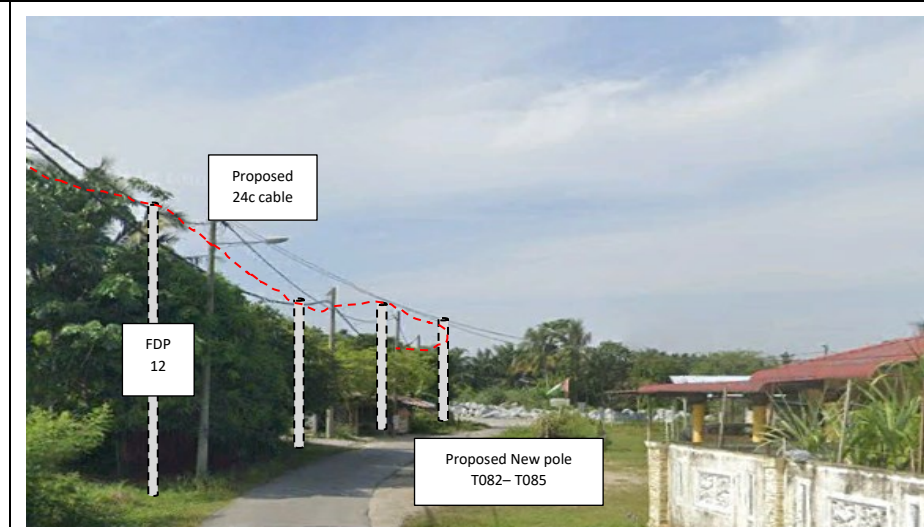
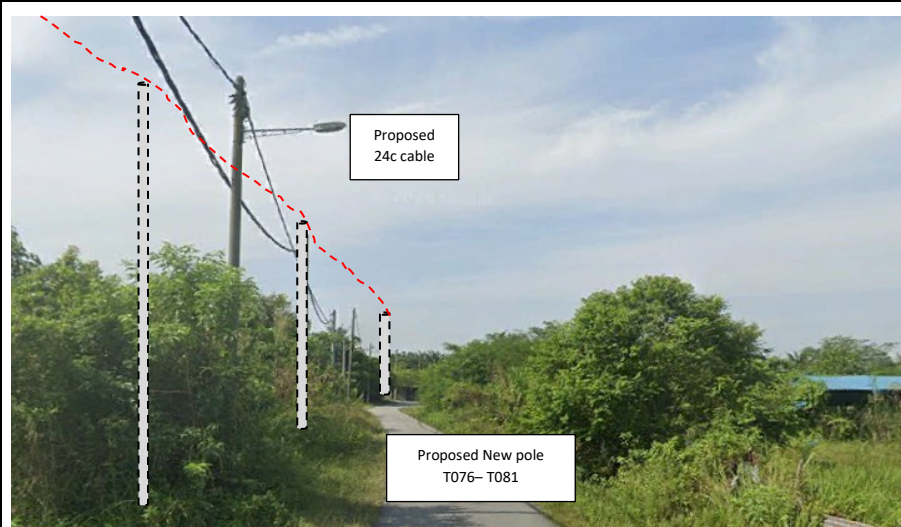












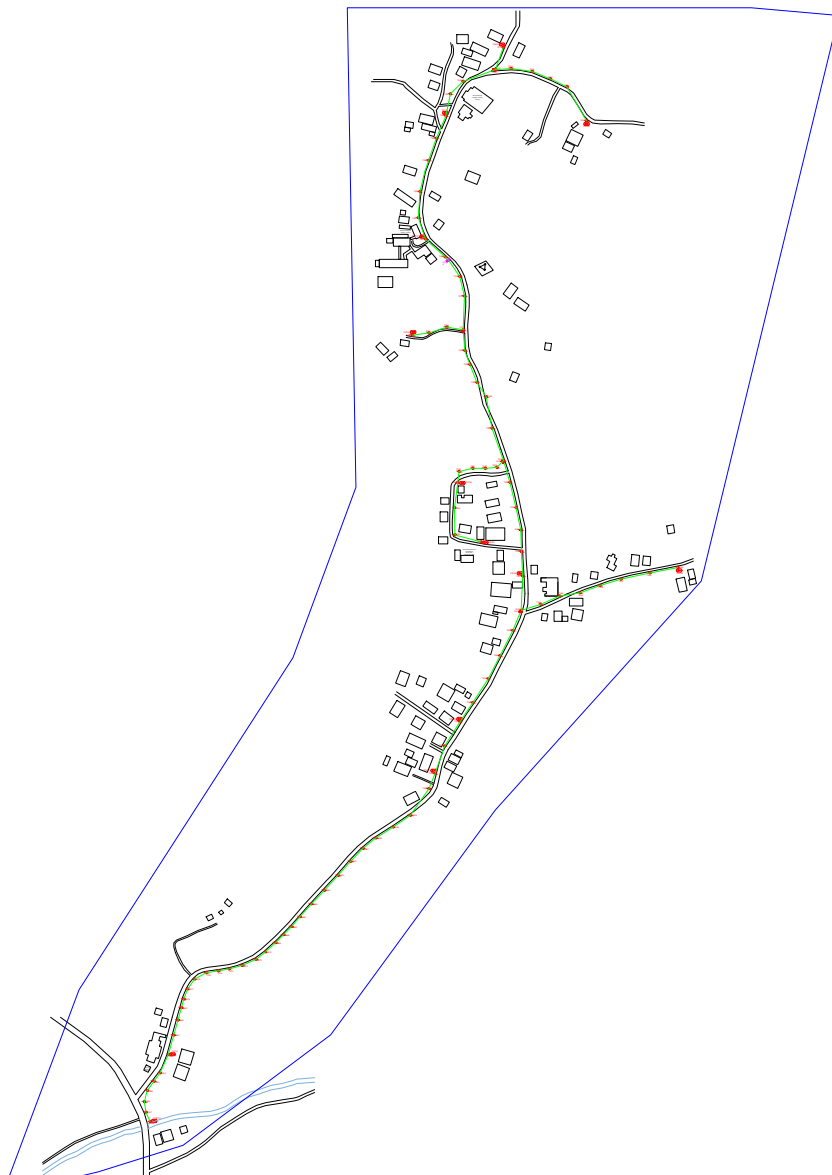


PROJEK PENYEDIAAN DAN PENYELENGGARAAN POINT OF PRESENCE (POP) FASA 2: HAB INFRASTRUKTUR GENTIAN OPTIK BERHAMPIRAN DENGAN SEKOLAH, KAWASAN PERINDUSTRIAN, PREMIS KERAJAAN DAN KOMUNITI SEKITARNYA OLEH KEMENTERIAN KOMUNIKASI MALAYSIA - ZON UTARA (KKMM.400-11/17/132(1))



3rd Parties Dependencies

No.	Local Council/ Authority	Remark
1	Majlis Perbandaran Kampar	
2		
3		
4		
5		
6		



LEGEND	NOS.	NOS.	NOS.	NOS.	NOS.	NOS.	NOS.	NOS.	NOS.
12C FOC		Installed 1:4 / 1:8 / 1:32 splitter		Installed Pole (9m)		S Suspension		1B30	New Manhole (PIT)
24C FOC	2448	Installed Patch Cord		Installed Pole (7.5M)	88	T Tension		1C7	New Manhole(JRC7)
48C FOC		FDC	1	Installed Pole (6.7M)		Pole Ring			FDP Boundary
96C FOC		Closure	4	Existing TNB Pole		FDP with (1:8) splitter	13		HDD (Meter)
144C FOC		Existing Closure		Installed Riser		Existing Manhole			Open Cut (Meter)
									Micro-Trenching (Meter)
									Temporary Infra (Meter)
									Loop / Coil (Meter)
									Active Outdoor Cabinet
									FDC NO.
									MH1 MH NO.
									TKS-1 Existing TNB Pole NO.
									PO01 New Pole NO.
									CL01 Closure NO.
									DP1 FDP NO.

ACTUAL HOMEPASS :

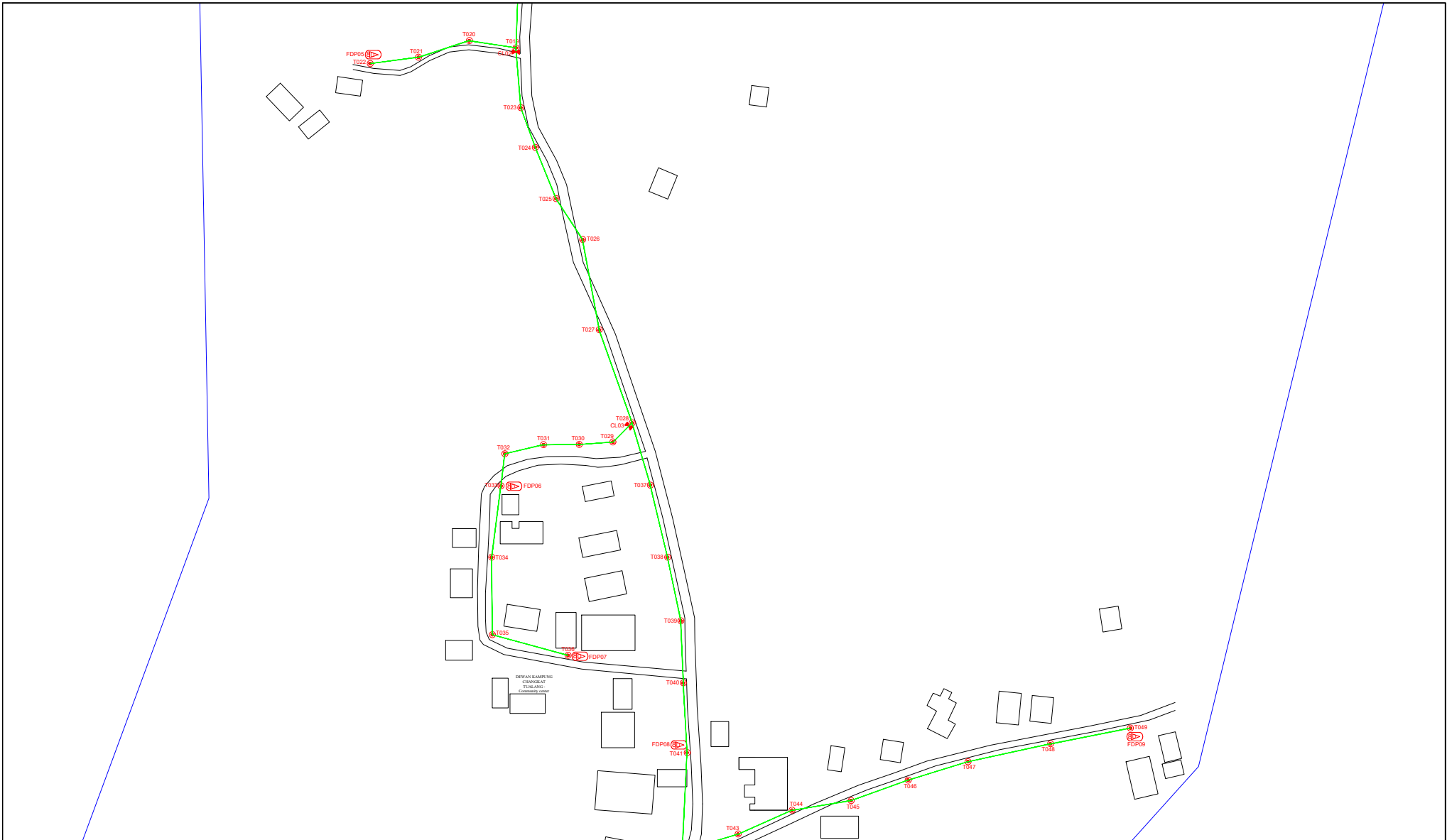
KEY PLAN : POP2 PROJECT IN PERAK	OWNER/DEVELOPOR : 	MAIN CONTRACTOR : <small>WCWL COMMUNICATIONS SDN BHD 127, JALAN PUTU 3/2, TAMAN PUNCAH JAYA, BANDAR PUTRA PERAI, 05100 SIBU KERTASAJU, SELANGOR TEL: 403 508 0983 E-MAIL: info@wcwlcommunications.com.my</small>	PROJECT TITLE : CONTRACTOR FOR SURVEY, TECHNICAL PROPOSAL AND WAYLEAVE, & PERMIT APPROVAL - POP2 PROJECT	DRAWING TITLE: CONSTRUCTION DRAWING ABA9016 SEKOLAH KEBANGSAAN CHANGKAT TUALANG	Design By : AZFAR	Date : NOV 2024
					Drawn By : ATIFAH	Scale : NOT TO SCALE
				PROJECT PHASE: POP 2	Checked By : AZFAR	Job Number : 1
				DRAWING NUMBER : ABA9016-CD-01	Sheet : 1/5	
THIS PRINT AND ITS COPYRIGHT ARE THE PROPERTY OF APEX COMMUNICATIONS SDN BHD						Size : A3



LEGEND	NOS.		NOS.		NOS.		NOS.		NOS.		NOS.		NOS.
12C FOC		Installed 1:4 / 1:8 / 1:32 splitter		Installed Pole (9m)	8	Suspension		MB30	New Manhole (PIT)	Micro-Trenching (Meter)		MH1	MH NO.
24C FOC	2448	Installed Patch Cord		Installed Pole (7.5M)	88	Tension		MB31	New Manhole(JRC7)	Temporary Infra (Meter)		TKS-1	Existing TNB Pole NO.
48C FOC		FDC	1	Installed Pole (6.7M)		Pole Ring			FDP Boundary	Loop / Coil (Meter)		PO01	New Pole NO.
96C FOC		Closure	4	Existing TNB Pole		FDP with (1:8) splitter	13		HDD (Meter)	Active Outdoor Cabinet		CL01	Closure NO.
144C FOC		Existing Closure		Installed Riser		Existing Manhole			Open Cut (Meter)	FDC NO.		DP1	FDP NO.

ACTUAL HOMEPASS :

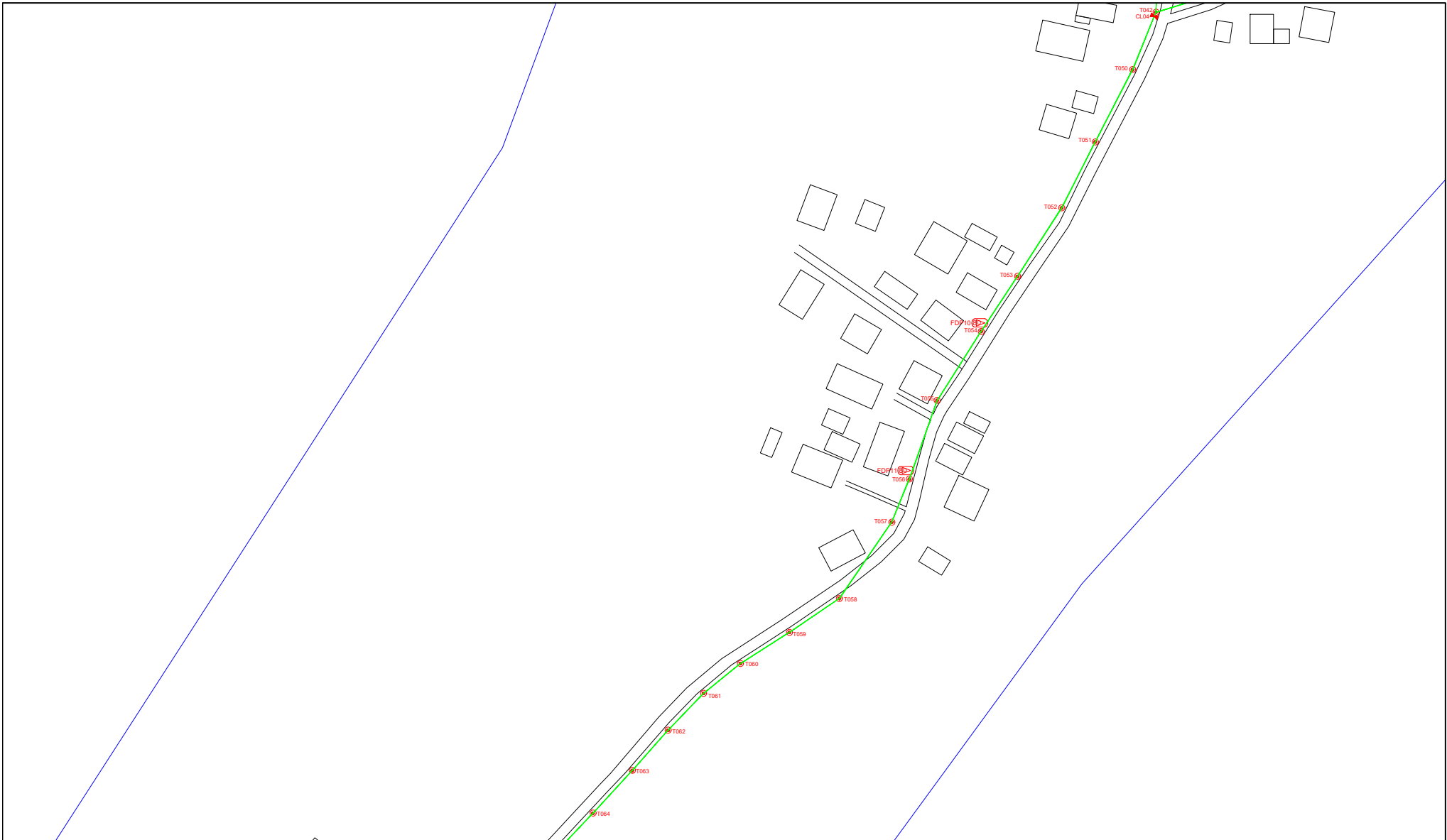
KEY PLAN : POP2 PROJECT IN PERAK	OWNER/DEVELOPOR : 	MAIN CONTRACTOR : <small>WCWL COMMUNICATIONS SDN BHD 127, JALAN PUTI 3/2, TAMAN PUNDAJ JAYA, BANDAR PUTRA PERAI, 03000 SERI KEMBANGAN, SELANGOR TEL : 403 5088 0983 E-MAIL : info@wcwlcommunications.com.my</small>	PROJECT TITLE : CONTRACTOR FOR SURVEY, TECHNICAL PROPOSAL AND WAYLEAVE, & PERMIT APPROVAL - POP2 PROJECT	DRAWING TITLE: CONSTRUCTION DRAWING ABA9016 SEKOLAH KEBANGSAAN CHANGKAT TUALANG	Design By : AZFAR	Date : NOV 2024
					Drawn By : ATIFAH	Scale : NOT TO SCALE
PROJECT PHASE: POP 2					Checked By : AZFAR	Job Number : 1
DRAWING NUMBER : ABA9016-CD-02					Sheet : 2/5	Size : A3
<small>THIS PRINT AND ITS COPYRIGHT ARE THE PROPERTY OF APEX COMMUNICATIONS SDN BHD</small>						



LEGEND	NOS.	NOS.	NOS.	NOS.	NOS.	NOS.	NOS.	NOS.	NOS.
12C FOC	Installed 1:4 / 1:8 / 1:32 splitter	Installed Pole (9m)	S Suspension	B330 New Manhole (PIT)	Micro-Trenching (Meter)	MH1 MH NO.			
24C FOC	2448 Installed Patch Cord	Installed Pole (7.5M)	T Tension	C7 New Manhole(JRC7)	Temporary Infra (Meter)	TKS-1 Existing TNB Pole NO.			
48C FOC	FDC	Installed Pole (6.7M)	Pole Ring	FDP Boundary	Loop / Coil (Meter)	PO01 New Pole NO.			
96C FOC	Closure	Existing TNB Pole	FDP with (1:8) splitter	HDD (Meter)	# Active Outdoor Cabinet	CL01 Closure NO.			
144C FOC	Existing Closure	Installed Riser	Existing Manhole	Open Cut (Meter)	C01 FDC NO.	DP1 FDP NO.			

ACTUAL HOMEPASS :

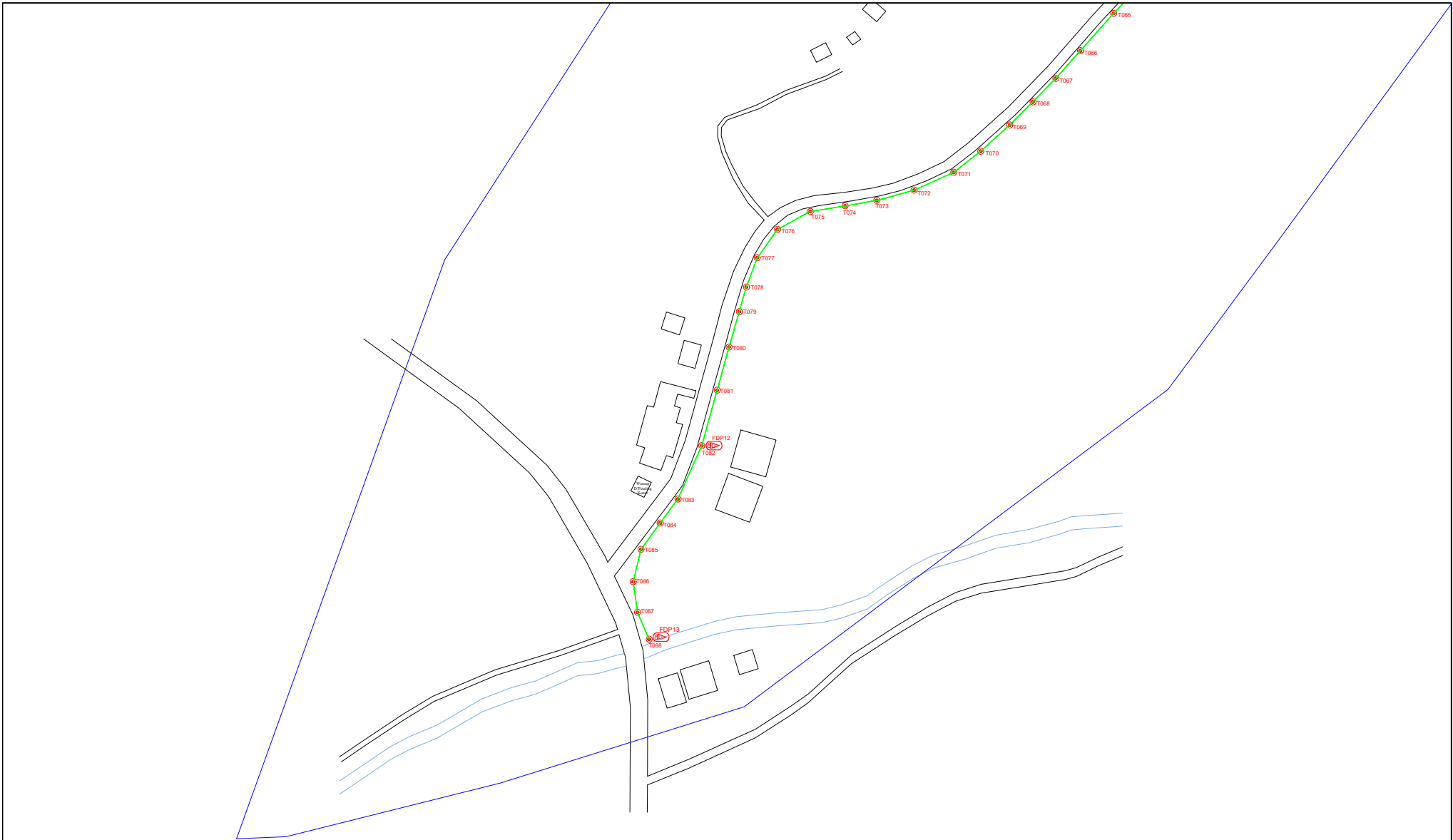
KEY PLAN : POP2 PROJECT IN PERAK	OWNER/DEVELOPER : 	MAIN CONTRACTOR : 	PROJECT TITLE : CONTRACTOR FOR SURVEY, TECHNICAL PROPOSAL AND WAYLEAVE, & PERMIT APPROVAL - POP2 PROJECT	DRAWING TITLE: CONSTRUCTION DRAWING ABA9016 SEKOLAH KEBANGSAAN CHANGKAT TUALANG	Design By : AZFAR	Date : NOV 2024
					Drawn By : ATIFAH	Scale : NOT TO SCALE
PROJECT PHASE: POP 2					Checked By : AZFAR	Job Number : 1
DRAWING NUMBER : ABA9016-CD-03					THIS PRINT AND ITS COPYRIGHT ARE THE PROPERTY OF APEX COMMUNICATIONS SDN BHD	Sheet : 3/5 Size : A3



LEGEND	NOS.	NOS.	NOS.	NOS.	NOS.	NOS.	NOS.	NOS.	NOS.
12C FOC		Installed 1:4 / 1:8 / 1:32 splitter		Installed Pole (9m)	S	Suspension		B330	New Manhole (PIT)
24C FOC	2448	Installed Patch Cord		Installed Pole (7.5M)	88	T	Tension	CT7	New Manhole(JRC7)
48C FOC		FDC	1	Installed Pole (6.7M)					FDP Boundary
96C FOC		Closure	4	Existing TNB Pole					HDD (Meter)
144C FOC		Existing Closure		Installed Riser					Open Cut (Meter)
									FDP with (1:8) splitter
									Existing Manhole
									Micro-Trenching (Meter)
									Temporary Infra (Meter)
									Loop / Coil (Meter)
									Active Outdoor Cabinet
									FDC NO.
									MH1
									MH NO.
									TKS-1
									Existing TNB Pole NO.
									PO01
									New Pole NO.
									CL01
									Closure NO.
									DP1
									FDP NO.

ACTUAL HOMEPASS :

KEY PLAN : POP2 PROJECT IN PERAK	OWNER/DEVELOPOR : 	MAIN CONTRACTOR : <small>WCWL COMMUNICATIONS SDN BHD 127, JALAN WU 3/2, TAMAN PUNDAK JAYA, BANDAR PUTRA PERAI, 43000 SERI KEMBANGAN, SELANGOR TEL: 403 5089 0983 E-MAIL: info@wcwlcommunications.com.my</small>	PROJECT TITLE : CONTRACTOR FOR SURVEY, TECHNICAL PROPOSAL AND WAYLEAVE, & PERMIT APPROVAL - POP2 PROJECT	DRAWING TITLE: CONSTRUCTION DRAWING ABA9016 SEKOLAH KEBANGSAAN CHANGKAT TUALANG	Design By : AZFAR	Date : NOV 2024
					Drawn By : ATIFAH	Scale : NOT TO SCALE
PROJECT PHASE: POP 2					Checked By : AZFAR	Job Number : 1
DRAWING NUMBER : ABA9016-CD-04					Sheet : 4/5	Size : A3
<small>THIS PRINT AND ITS COPYRIGHT ARE THE PROPERTY OF APEX COMMUNICATIONS SDN BHD</small>						



LEGEND	NOS.	NOS.	NOS.	NOS.	NOS.	NOS.	NOS.	NOS.	NOS.	NOS.
12C FOC	Installed 1:4 / 1:8 / 1:32 splitter	Installed Pole (9m)	Suspension	B30	New Manhole (PIT)	Micro-Trenching (Meter)	MH1	MH NO.		
24C FOC	2448 Installed Patch Cord	Installed Pole (7.5M)	Tension	C7	New Manhole(JRC7)	Temporary Infra (Meter)	TKS-1	Existing TNB Pole NO.		
48C FOC	FDC	Installed Pole (6.7M)	Pole Ring		FDP Boundary	Loop / Coil (Meter)	PO01	New Pole NO.		
96C FOC	Closure	Existing TNB Pole	FDP with (1:8) splitter	13	HDD (Meter)	Active Outdoor Cabinet	CL01	Closure NO.		
144C FOC	Existing Closure	Installed Riser	Existing Manhole		Open Cut (Meter)	FDC NO.	DP1	FDP NO.		

ACTUAL HOMEPASS :

<p>KEY PLAN :</p> <p>POP2 PROJECT IN PERAK</p>	<p>OWNER/DEVELOPOR :</p> 	<p>MAIN CONTRACTOR :</p>  <p>WCWL COMMUNICATIONS SDN BHD 127, JALAN PUTU 3/2, TAMBA PUNDAJ, 43000 PUTU PERAK, 43000 SEREMBAN, SELANGOR TEL: 403 5088 0983 E-MAIL: info@wcwcommunications.com.my</p>	<p>PROJECT TITLE :</p> <p>CONTRACTOR FOR SURVEY, TECHNICAL PROPOSAL AND WAYLEAVE, & PERMIT APPROVAL - POP2 PROJECT</p>	<p>DRAWING TITLE:</p> <p>CONSTRUCTION DRAWING ABA9016 SEKOLAH KEBANGSAAN CHANGKAT TUALANG</p>	<p>Design By : AZFAR</p>	<p>Date : NOV 2024</p>
					<p>Drawn By : ATIFAH</p>	<p>Scale : NOT TO SCALE</p>
<p>PROJECT PHASE: POP 2</p>					<p>Checked By : AZFAR</p>	<p>Job Number : 1</p>
<p>DRAWING NUMBER : ABA9016-CD-05</p>					<p>Sheet : 5/5</p>	<p>THIS PRINT AND ITS COPYRIGHT ARE THE PROPERTY OF APEX COMMUNICATIONS SDN BHD</p>
					<p>Size : A3</p>	