

TECHNICAL PROPOSAL

	
<p>PPU SIMPANG PULAI 3L5</p>	<p>PPU GIP 1L5</p>
<p>LAT/LONG: 4.52560°101.12416°E</p>	<p>LAT/LONG: 4.49461°N 101.14191°E</p>
<p>CIVIL INFRASTRUCTURE AND FIBRE OPTIC CABLING SYSTEM</p>	
<p>PROJECT NAME: INSTALL OF NEW FIBRE PPU SIMPANG PULAI TO PPU GIP 1L5</p>	
<p>REGION: NORTHERN (GOPENG)</p>	
<p>SITE/LINK: PPU SIMPANG PULAI 3L5 TO PPU GIP 1L5</p>	

Table Of Content

- Section 1: Proposed Manhole Coordinates
- Section 2: OSP and ISP Routing Plan
- Section 3: OSP and ISP Snapshot/ Photo

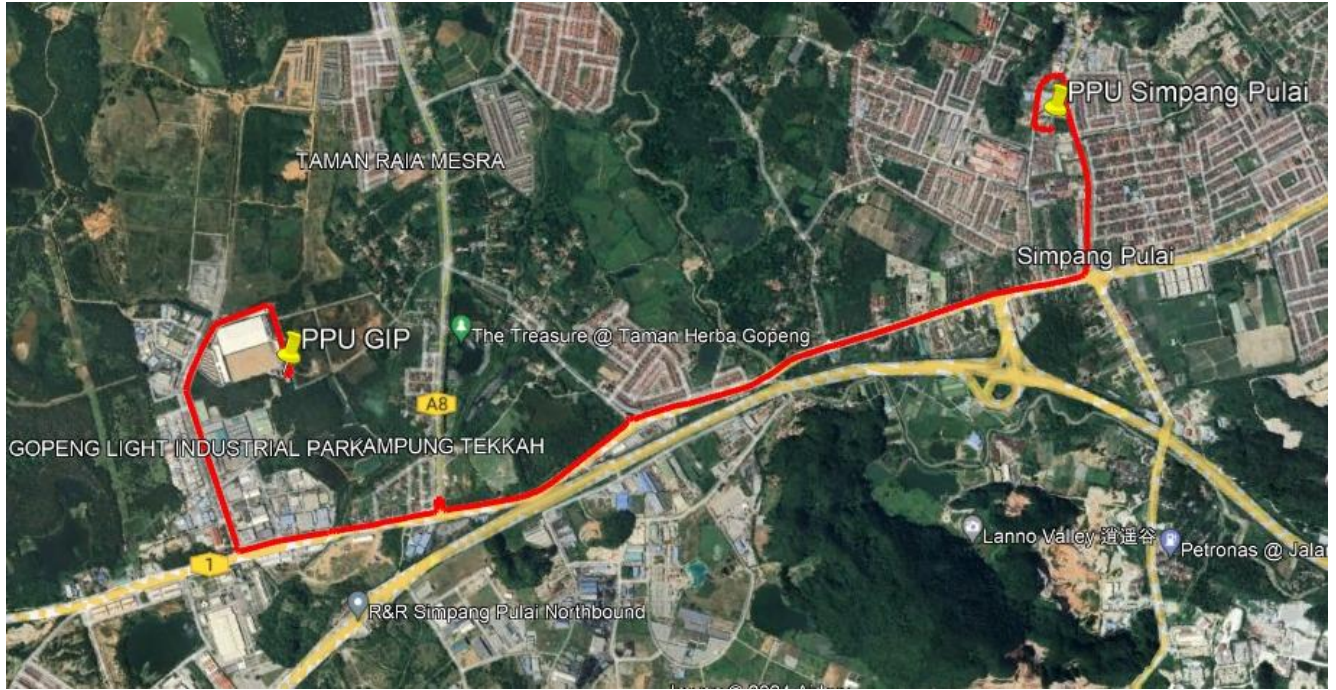
Section 1: PROPOSED MANHOLE COORDINATES

Bil	Manhole	Lat	Long	Road	Method Of Statement
1	MH1	4.49461N	101.14191E	JLN.GOPENG	MT 20m
2	MH2	4.49377N	101.14034E	JLN.GOPENG	HDD: 156m
3	MH3	4.49315N	101.14034E	JLN.GOPENG	HDD: 185m
4	MH4	4.49198N	101.13977E	JLN.GOPENG	HDD: 210m
5	MH5	4.49315N	101.13918E	JLN.GOPENG	HDD: 220m
6	MH6	4.49022N	101.14203E	JLN.GOPENG	HDD: 180m
7	MH7	4.49125N	101.14540E	JLN.GOPENG	HDD: 240m
8	MH8	4.49209N	101.14692E	JLN.GOPENG	HDD: 200m
9	MH9	4.49314N	101.14877E	JLN.GOPENG	HDD: 240m
10	MH10	4.49386N	101.15003E	JLN.GOPENG	HDD: 160m
11	MH11	4.49565N	101.14927E	JLN.GOPENG	HDD: 300m
12	MH12	4.49772N	101.14844E	JLN.GOPENG	HDD: 160m
13	MH13	4.49798N	101.14845E	JLN.GOPENG	HDD: 80m
14	MH14	4.49892N	101.14812E	JLN.GOPENG	HDD: 180m
15	MH15	4.50173N	101.14688E	JLN.GOPENG	HDD: 300m
16	MH16	4.50359N	101.14613E	JLN.GOPENG	HDD: 250m
17	MH17	4.50576N	101.14527E	JLN.GOPENG	HDD: 250m
18	MH18	4.50752N	101.14380E	JLN.GOPENG	HDD: 250m
19	MH19	4.50928N	101.14170E	JLN.GOPENG	HDD: 250m
20	MH20	4.51119N	101.14009E	JLN.GOPENG	HDD: 250m
21	MH21	4.51341N	101.13900E	JLN.GOPENG	HDD: 260m
22	MH22	4.51513N	101.13799E	JLN.GOPENG	HDD: 160m
23	MH23	4.51778N	101.13588E	JLN.GOPENG	HDD: 200m
24	MH24	4.51942N	101.18498E	JLN.GOPENG	HDD: 200m
25	MH25	4.52144N	101.13329E	JLN.GOPENG	HDD: 250m
26	MH26	4.52348N	101.13262E	JLN.GOPENG	HDD: 250m

27	MH27	4.52543N	101.13160E	JLN.GOPENG	HDD: 250m
28	MH28	4.52543N	101.13160E	JLN.SULTAN NAZRIN SHAH	HDD: 250m
29	MH29	4.52848N	101.13028E	JLN.BESAR	HDD: 120m
30	MH30	4.52839N	101.12807E	JLN.PBC 1	HDD: 250m
31	MH31	4.52785N	101.12569E	JLN.PBC 1	HDD: 250m
32	MH32	4.52676N	101.12368E	JLN.PBC 1	HDD: 250m
35	MH33	4.52514N	101.12405E	JLN.PULAI JAYA 1	HDD: 200m
36	MH34	4.52553N	101.12415E	JLN.PULAI JAYA 1	MT 46m
36	TRENCH	N/A	N/A	JLN.PULAI JAYA 1	MT 30m

<p>TOTAL 48C CABLE LENGTH 7047m TOTAL HDD LENGTH 6951m TOTAL MH JRC7 :34nos</p>

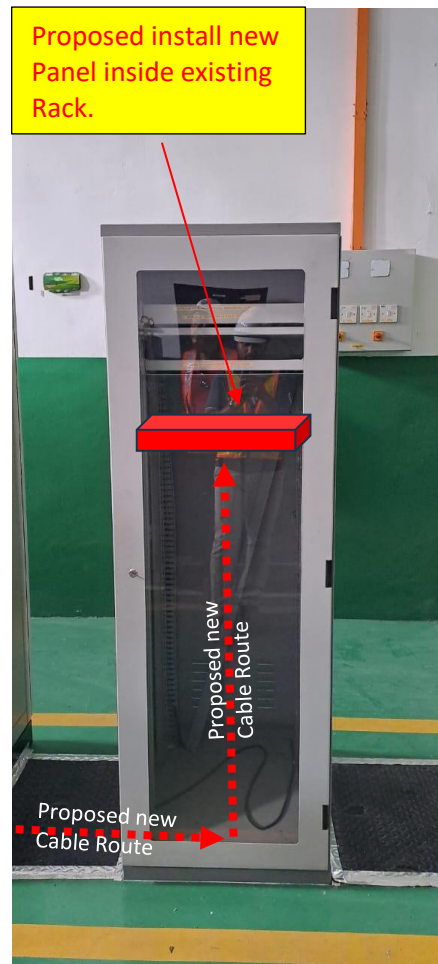
Section 2: OSP & ISP ROUTING PLAN (OVERALL ROUTING)



Section 3: OSP AND ISP SNAPSHOT/ PHOT



PMU SIMPANG PULAI



PROPOSED EQUIPMENT LOCATION



PPU GIP





MH 1:



MH 2:



MH 3:



MH 4:



MH 5:

...



MH 6:



MH 7:



MH 8:



MH 9:



MH 10:



MH 11:



MH 12:



MH 13:



MH 14:



MH 15:



MH 16:



MH 17:



MH 18:



MH 19:



MH 20:



MH 21:



MH 22:



MH 23:



MH 24:



MH 25:



MH 26:



MH 27:



MH 28:



MH 29:



MH 30:



MH 31:



MH 32:





MH 33:



MH 34:

