

Template – Technical Proposal for TM Landed Project (Rev 0)

Revision Record

Revision No.	Description Of Change	Author	Effective Date
0	N/A	1. Azhan Haris	December 2024

Technical Proposal for TM Project



Project Description:	SRR FTTH KTS_C024 TAMAN KLEBANG TROPIKA (JALAN KLEBANG AMAN 234)
Project Number:	TMNA/252771
TM Node	KTS
Region	Northern
NE ID	KTS C024
Total FTTH Ports	24
Total Property	34
PF (%)	70%
RFSI Date	28 FEB 2026
GPS Coordinate	4.676020,101.103402

Prepared by:	AZHAN HARIS
Company Name:	SINOR
Date:	15/1/2026
TP Revision:	0

Contents

- 1.0 **FDC information**
 - 1.1 FDC Boundary
 - 1.2 FDC Details and Illustration

- 2.0 **FDP information**
 - 2.1 FDP and FOOSC Location
 - 2.2 FDP Boundary
 - 2.3 Cable Plan
 - 2.4 Spur Information
 - 2.5 FDP details
 - 2.6 Tie FDP details

- 3.0 **New Pole information**
 - 3.1 Pole plan
 - 3.2 Pole details
 - 3.3 Illustration

- 4.0 **Material Specification**
 - 4.1 Fiber Accessories - FDC/Mini FDC/FDP/ODF
 - 4.2 Civil Accessories – Manhole/Pole

- 5.0 **Costing & BOQ**
 - 5.1 Project BOQ
 - 5.2 Costing

MATRIX REQUIREMENT FOR PROJECT












NO	Item	Detail Item	Remark	TP Check list					
				FTTH >1 DP	FTTH 1 FDP	Add DP / Tie DP	NID/5G	Civil	Main FOC
1	Cabinet location	Boundary	Polygon on Map showing area covered by FDC	C	C	NR	NR	NR	NR
		Detail Illustration	Illustration showing FDP location on picture, table with detail address, latlong	C	C	C	C	NR	NR
2	Cable Plan	On Map	Cable Plan, ID, Distance, Route, Distance, Joint Location illustration on map	C	C	C	C	NR	C
		SLD	Cable Plan	C	NR	NR	NR	NR	NR
3	FDP	Detail FDP/Tie DP	Table with FDP & Tie DP Detail	C	C	C	NR	NR	NR
		FDP, Tie DP Boundary	Polygon on Map for landed or Building image for Highrise showing area covered by each FDP	C	C	C	NR	NR	NR
4	Pole	Plan	Location and quantity on Map	C	C	C	C	C	C
		Illustration	Illustration showing Pole location on picture, table with detail pole type, latlong	C	C	C	C	C	C
5	Civil	Plan	Location and quantity on Map	C	C	C	C	C	C
		Illustration	Illustration showing civil location on picture, table with detail address, latlong	C	C	C	C	C	C
		Civil Manhole Detail	Table with Manhole Detail	C	C	C	C	C	C
6	BOQ & BOM	Detail BOQ	Detail PU item related to project. Show – PU number, quantity and costDetail	C	C	C	C	C	C
		Detail BOM*	Material related to project	C	C	C	C	C	C
7	Costing		Overall cost	C	C	C	C	C	C

*CNC Lite only

1.1 Location Plan & Boundary



Legend:

 FDC	 EXT. JOINT	 MANHOLE/PIT	 EXT. CONCRETE POLE	 FOC 12C IB	 FOC 48C IB
 FDP	 NEW JOINT	 NEW CONCRETE POLE	 EXT. IRON POLE	 FOC 24C IB	

2.1 FDP and Location Plan



Legend:



FDC



FDP



EXT. JOINT



NEW JOINT



MANHOLE/PIT



NEW CONCRETE POLE



EXT. CONCRETE POLE



EXT. IRON POLE



FOC 12C IB

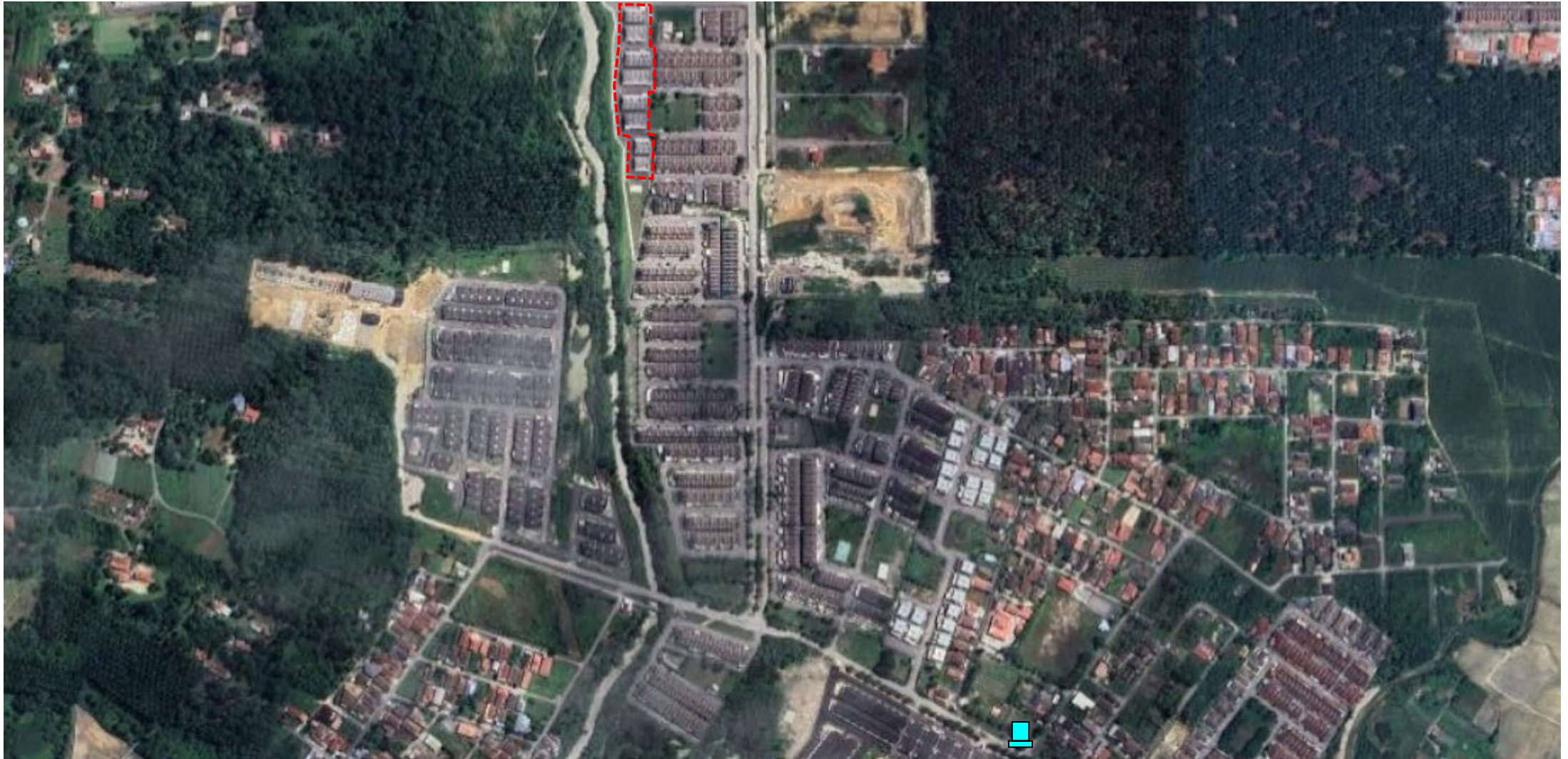


FOC 24C IB



FOC 48C IB

2.1 FDC and Location Plan



Legend:



FDC



FDP



EXT. JOINT



NEW JOINT



MANHOLE/PIT



NEW CONCRETE POLE



EXT. CONCRETE POLE



EXT. IRON POLE

FOC 12C IB

FOC 24C IB

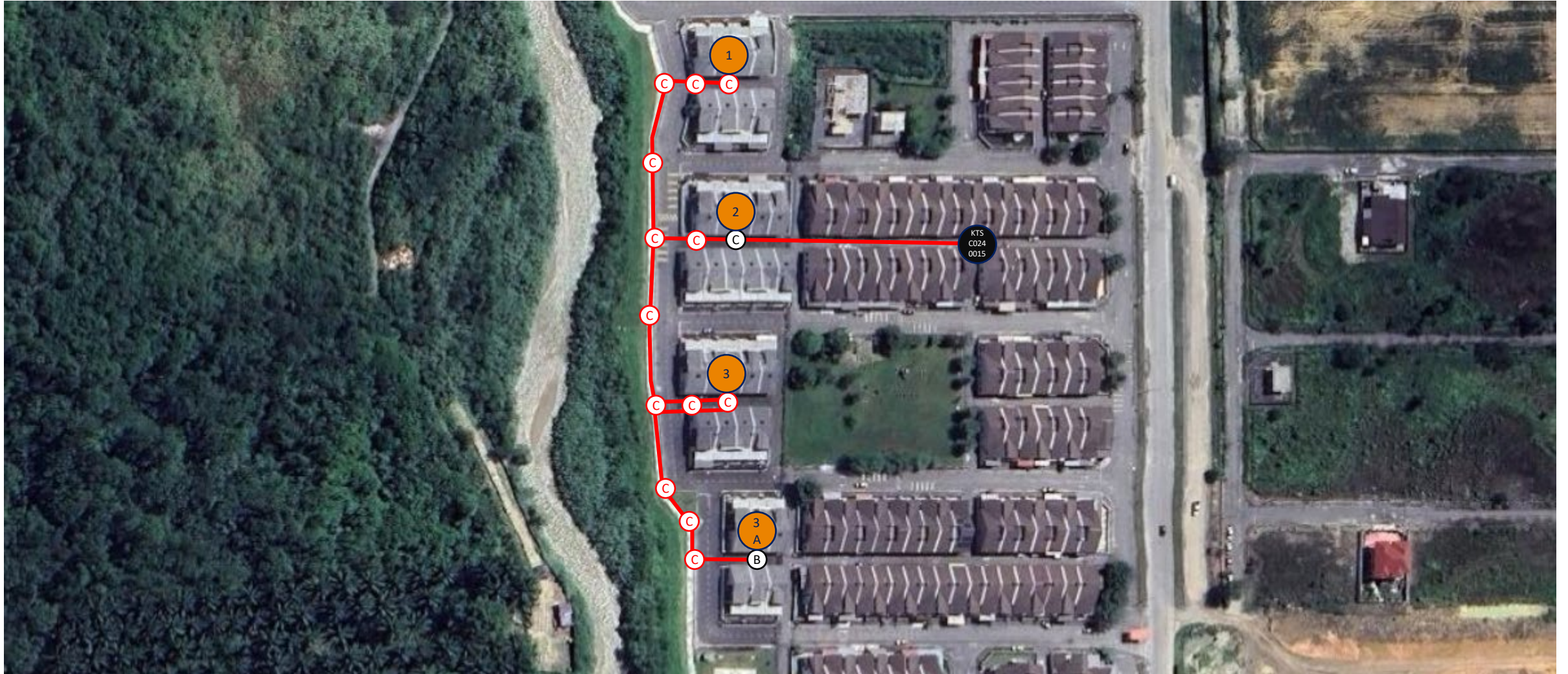
FOC 48C IB

2.2

FDP Boundary

FDP NO.	FDP LOCATION	FDP COVERAGE
DPO0XX	ANTARA BELAKANG RUMAH NO. 3 & 5, JALAN KLEBANG AMAN 4, TAMAN KLEBANG TROPIKA, 31200 IPOH, PERAK	RUMAH NO 1,3,5,7, JALAN KLEBANG AMAN 4, TAMAN KLEBANG TROPIKA, 31200 IPOH, PERAK
		RUMAH NO. 2,4,6,8, HALA KLEBANG TROPIKA, TAMAN KLEBANG TROPIKA, 31200 IPOH, PERAK
DPO0XX	ANTARA BELAKANG RUMAH NO. 37 & 41, JALAN KLEBANG AMAN 3, TAMAN KLEBANG TROPIKA, 31200 IPOH, PERAK	RUMAH NO. 35,37,39,41,43,45, JALAN KLEBANG AMAN 3, TAMAN KLEBANG TROPIKA, 31200 IPOH, PERAK
		RUMAH NO. 38,40,42,44,46, JALAN KLEBANG AMAN 4, TAMAN KLEBANG TROPIKA, 31200 IPOH, PERAK
DPO0XX	ANTARA BELAKANG RUMAH NO. 17 & 19, JALAN KLEBANG AMAN 2, TAMAN KLEBANG TROPIKA, 31200 IPOH, PERAK	RUMAH NO. 15,17,19,21, JALAN KLEBANG AMAN 2, TAMAN KLEBANG TROPIKA, 31200 IPOH, PERAK
		RUMAH NO. 16,18,20,22,24, JALAN KLEBANG AMAN 3, TAMAN KLEBANG TROPIKA, 31200 IPOH, PERAK
DPOXXA	BELAKANG RUMAH NO. 39, JALAN KLEBANG AMAN 1, TAMAN KLEBANG TROPIKA, 31200 IPOH, PERAK	RUMAH NO. 37,39,41, JALAN KLEBANG AMAN 1, TAMAN KLEBANG TROPIKA, 31200 IPOH, PERAK
		RUMAH NO. 36,38,40, JALAN KLEBANG AMAN 2, TAMAN KLEBANG TROPIKA, 31200 IPOH, PERAK

2.3 Cable Plan



Legend:



FDC



FDP



EXT. JOINT



NEW JOINT



MANHOLE/PIT



NEW CONCRETE POLE



EXT. CONCRETE POLE



EXT. IRON POLE

FOC 12C IB

FOC 24C IB

FOC 48C IB

3.2 New Pole details

No	POLE ID	Pole Type	GPS Coordinate
1	1	Concrete Pole 7.5m	4.677018, 101.103455
2	2	Concrete Pole 7.5m	4.677014, 101.103304
3	3	Concrete Pole 7.5m	4.677017, 101.103217
4	4	Concrete Pole 7.5m	4.676743, 101.103175
5	5	Concrete Pole 7.5m	4.676460, 101.103275
6	6	Concrete Pole 7.5m	4.676462, 101.103173
7	7	Concrete Pole 7.5m	4.676185, 101.103168
8	8	Concrete Pole 7.5m	4.675914, 101.103449
9	9	Concrete Pole 7.5m	4.675901, 101.103279
10	10	Concrete Pole 7.5m	4.675902, 101.103180
11	11	Concrete Pole 7.5m	4.675662, 101.103194
12	12	Concrete Pole 7.5m	4.675557, 101.103290
13	13	Concrete Pole 7.5m	4.675359, 101.103305

3.3 New Pole Illustration



3.3

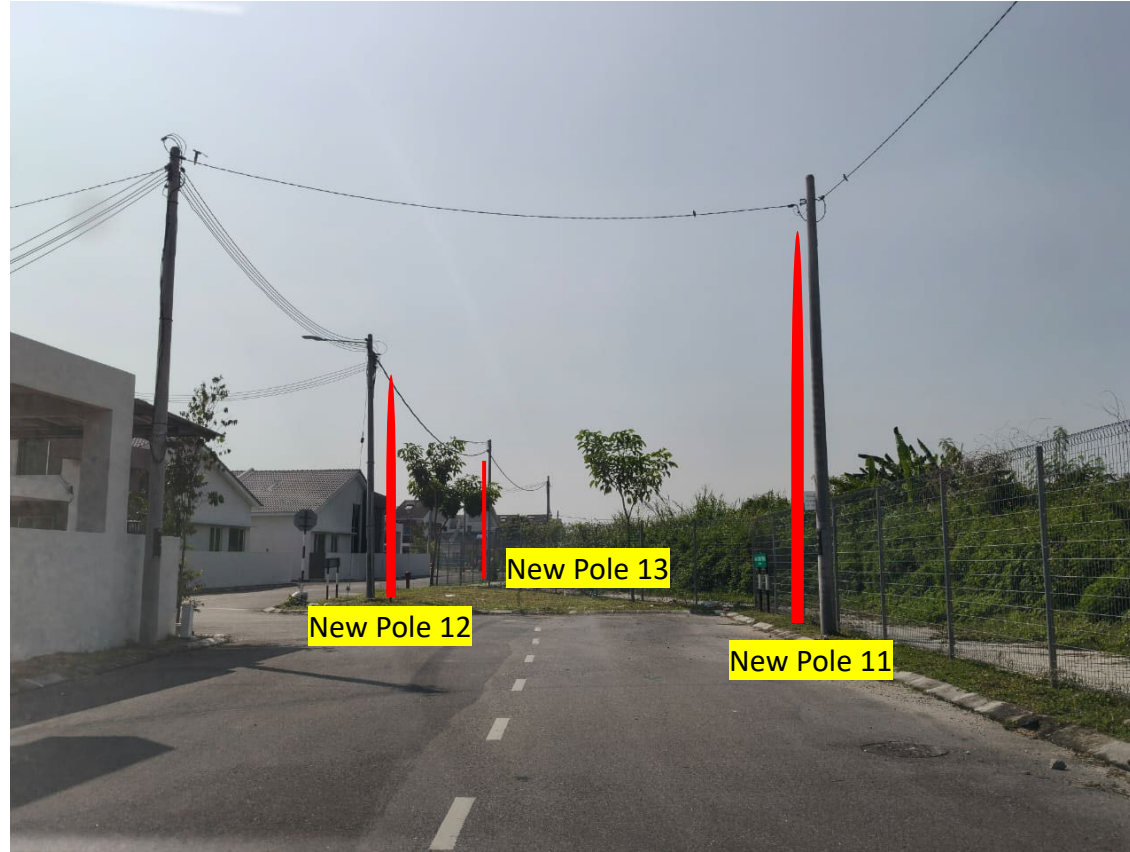
New Pole Illustration



3.3 New Pole Illustration



3.3 New Pole Illustration



5.1 Fiber/Civil Accessories

FDP



Supplier : Fiberhome
Model/Spec :

FOC Cable



Supplier : Fiberhome
Model/Spec :

5.1 Fiber/Civil Accessories

POLE 7.5/9M



Supplier : PMW
Model/Spec :

END OF TECHNICAL PROPOSAL