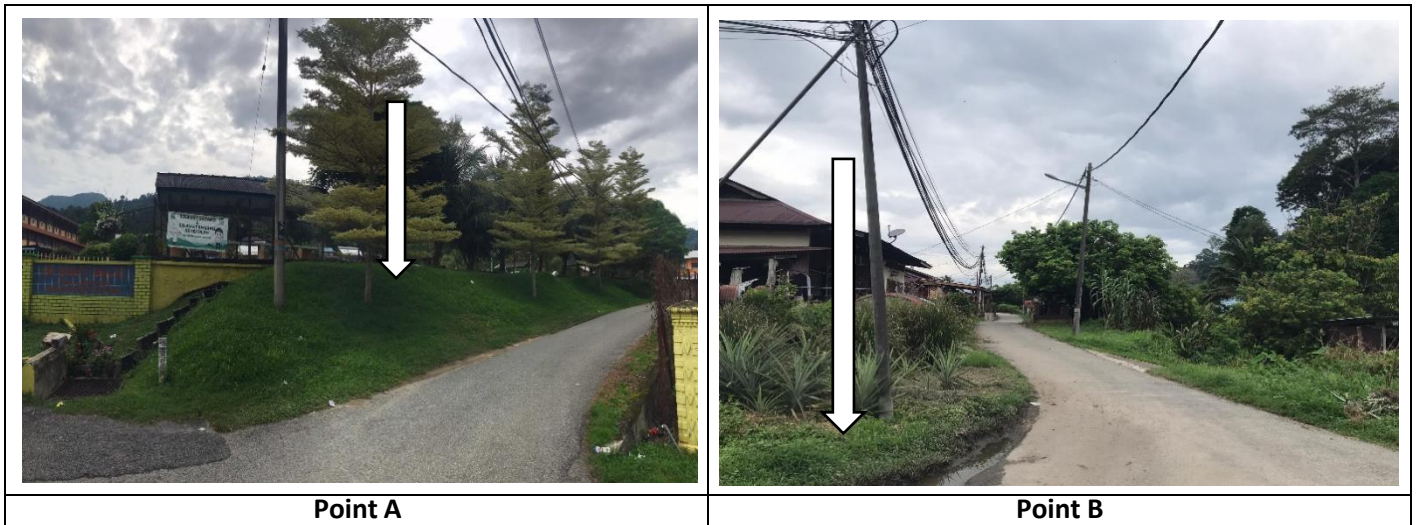


TECHNICAL PROPOSAL

POP2 ABB7035 SEKOLAH KEBANGSAAN BUKIT BALAI (D-SIDE)

Company Name : WabTech Sdn Bhd
Company Address : 101-1, Jalan Metro Sendayan, 71950, Seremban, Negeri Sembilan.
Prepared By : Mohd Farid bin Othman
Date : 11/12/2024



Starting Point

Site / Boundary Name : Sekolah Kebangsaan Bukit Balai
Address : No. 1, Kampung Sira, 33400 Lenggong, Perak.
District : Lenggong
Postcode : 33400
State : Perak
GPS Coordinate : 5.109494, 100.965474
LRD : A

End Point

Site / Boundary Name : Kampung Raban, Lenggong
Address : Jalan Haji Puteh, Kampung Sira, 33400 Lenggong, Perak.
District : Lenggong
Postcode : 33400
State : Perak
GPS Coordinate : 5.105766, 100.964220
LRD : B



PROJEK PENYEDIAAN DAN PENYELENGGARAAN POINT OF PRESENCE (POP)
FASA 2: HAB INFRASTRUTUK GENTIAN OPTIK BERHAMPIRAN DENGAN
SEKOLAH, KAWASAN PERINDUSTRIAN, PREMIS KERAJAAN DAN KOMUNITI
SEKITARNYA OLEH KEMENTERIAN KOMUNIKASI MALAYSIA – ZON UTARA
(KKMM.400-11/17/132(1))



WABTECH SDN BHD
(1398887-X)

1.0 WORK SUMMARY

NO	PROPOSED DISTANCE AND METHOD	UNIT	QUANTITY
1	Horizontal Directional Drilling (HDD)	m	0
2	Carriage Way Open Trench (CW)	m	0
3	Grass Verge Open Trenching (GV)	m	0
4	Micro Trenching (MT)	m	0
Total			

NO	OTHER INFORMATION	UNIT	QUANTITY
1	Installation of Short Span ADSS Fibre Cables	m	2237m
2	Install New Pole	ea	69
3	Install New JRC7 Manhole	ea	0
4	Install GI Riser 100mm	ea	0
5	Install Fiber Distribution Point and Closure (Splicing, Termination and Testing)	ea	15
6	Estimated Time Required for Completion	days	30



PROJEK PENYEDIAAN DAN PENYELENGGARAAN POINT OF PRESENCE (POP)
FASA 2: HAB INFRASTRUTUK GENTIAN OPTIK BERHAMPIRAN DENGAN
SEKOLAH, KAWASAN PERINDUSTRIAN, PREMIS KERAJAAN DAN KOMUNITI
SEKITARNYA OLEH KEMENTERIAN KOMUNIKASI MALAYSIA – ZON UTARA
(KKMM.400-11/17/132(1))



WABTECH SDN BHD
(1398887-X)

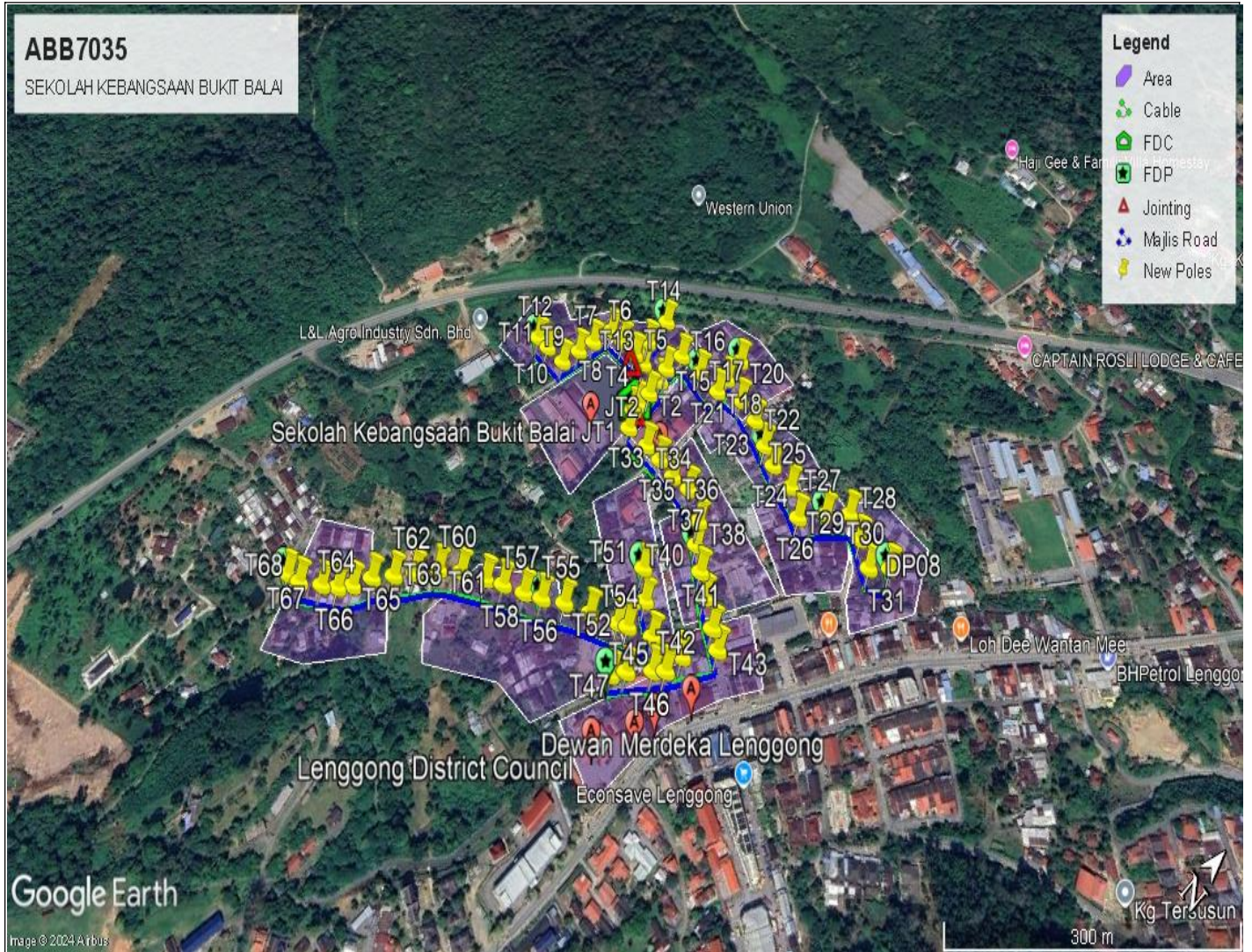
2.0 LOCAL AUTHORITY SUMMARY

Daerah Lenggong

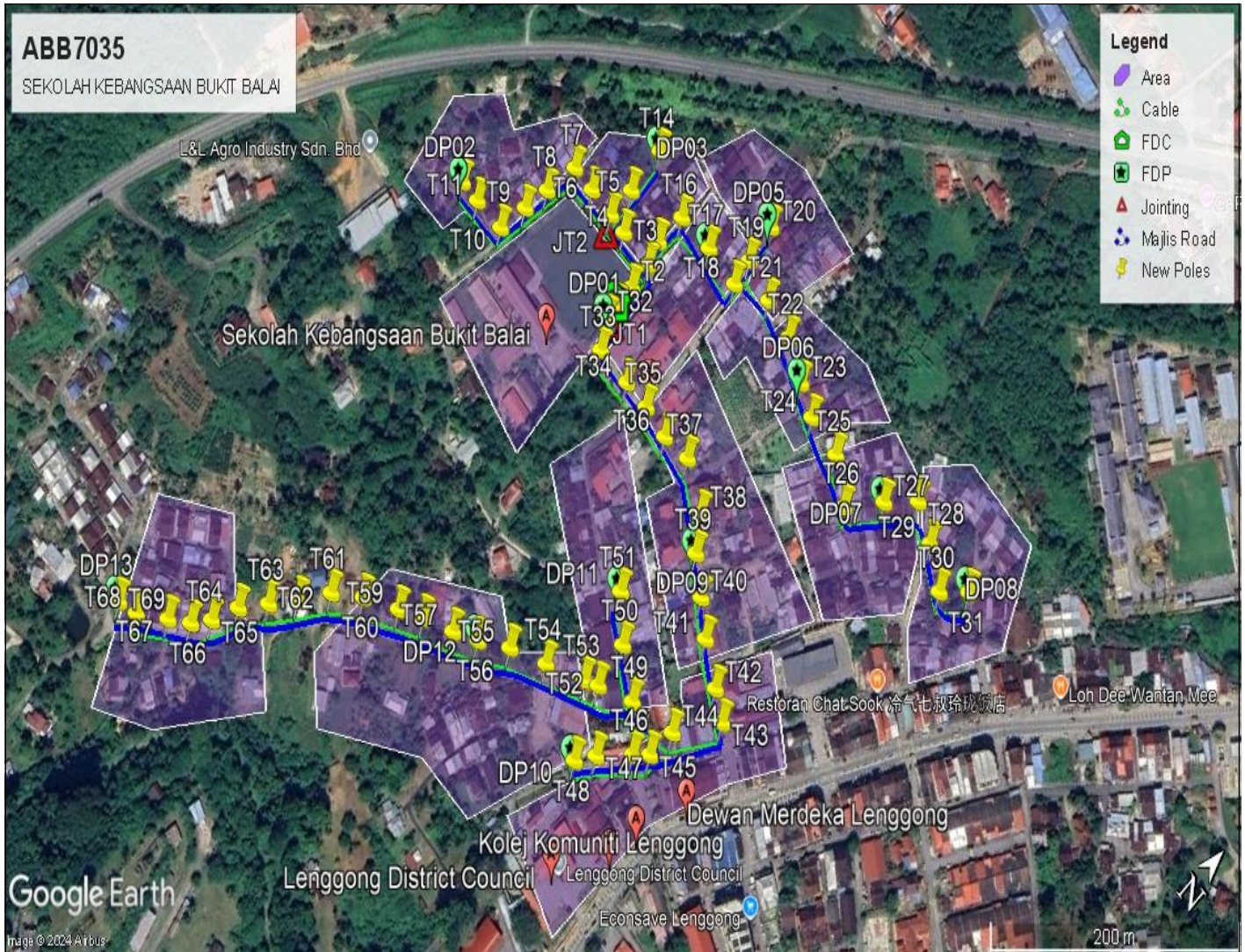
NO	ITEMS	Owner	Quantity	Distance (m)
1	HDD	JKR	-	-
		Majlis	-	-
		PDT	-	-
2	New Pole	JKR	-	-
		Majlis	69	1726
		PDT	-	-
Total Distance (m)				1726

3.0 SITE PLAN (KMZ)

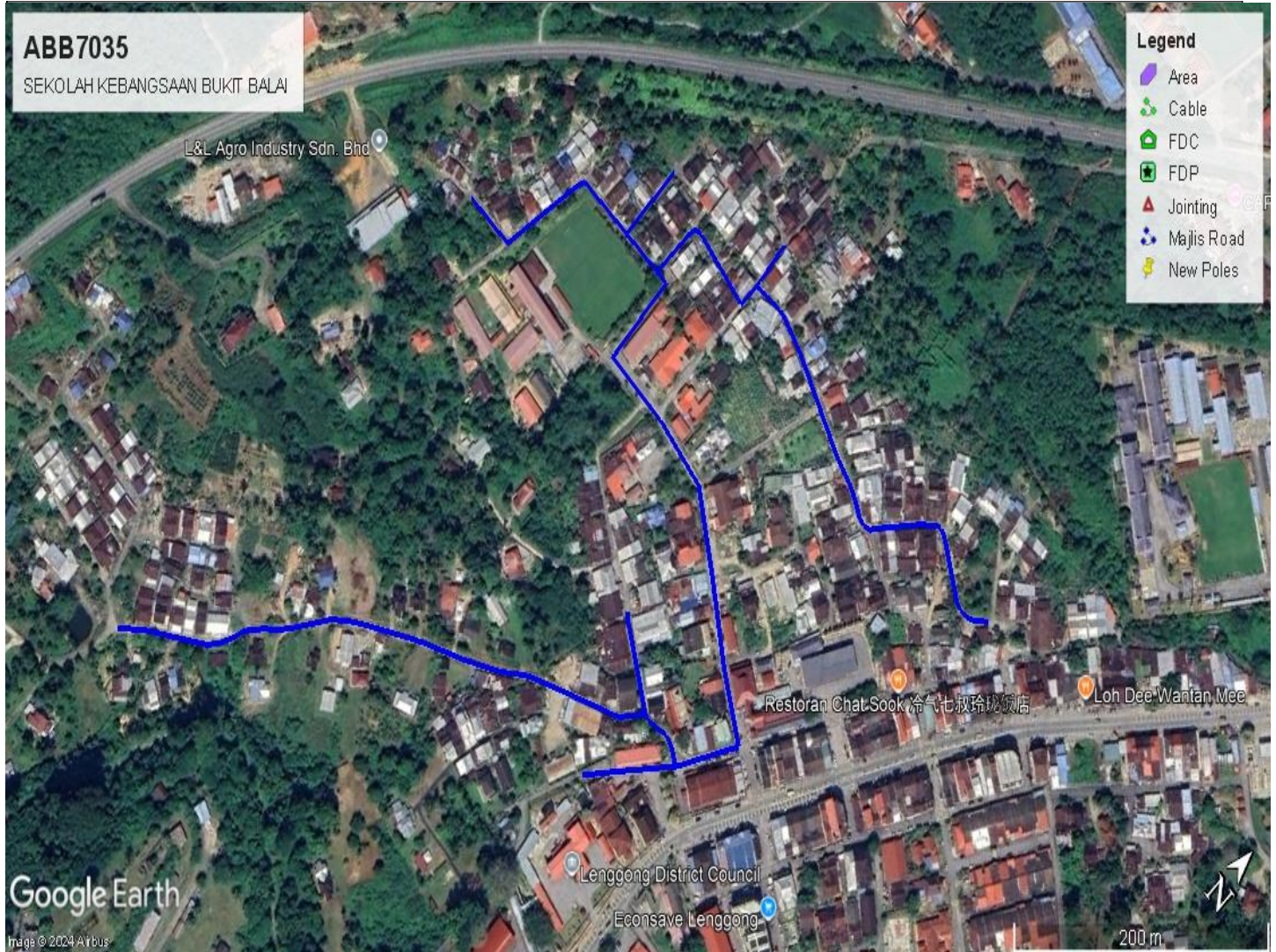
3.1 Overview Site Area



3.2 Site boundry



3.3 Road Boundry

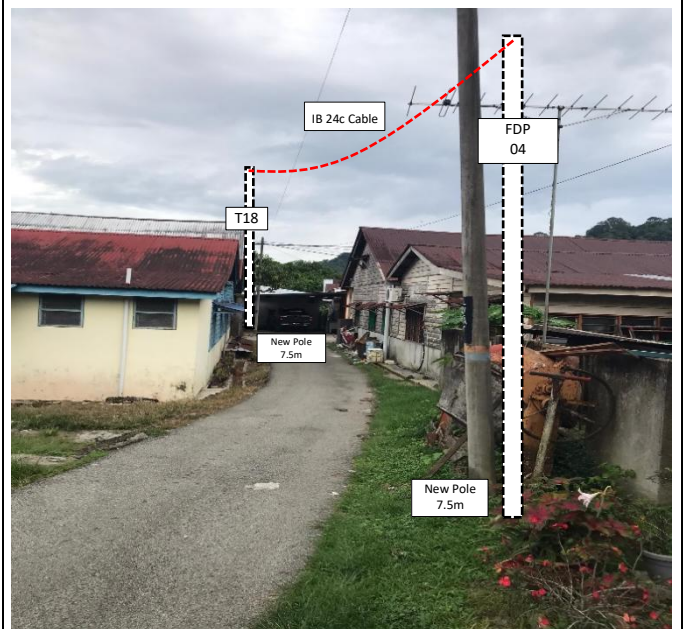
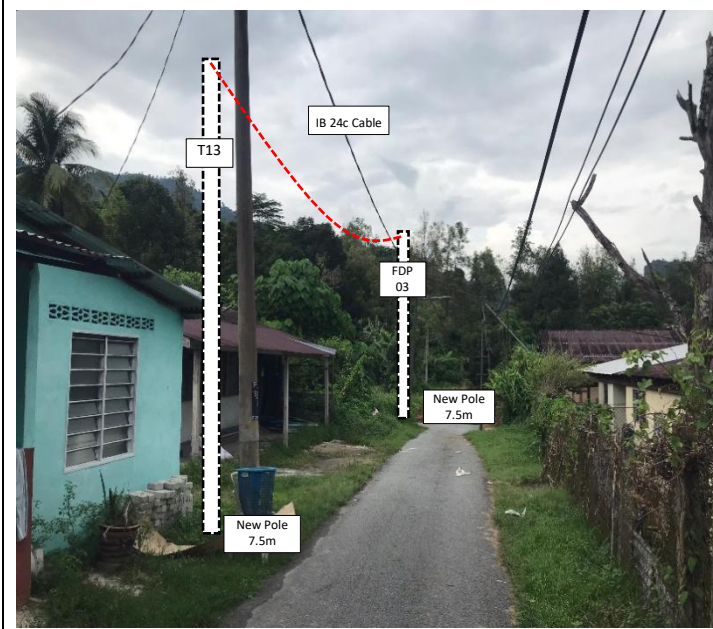
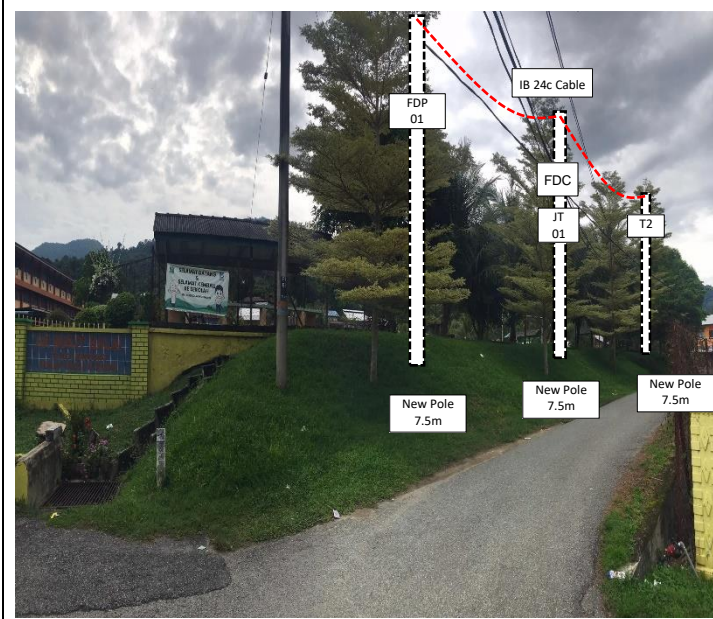


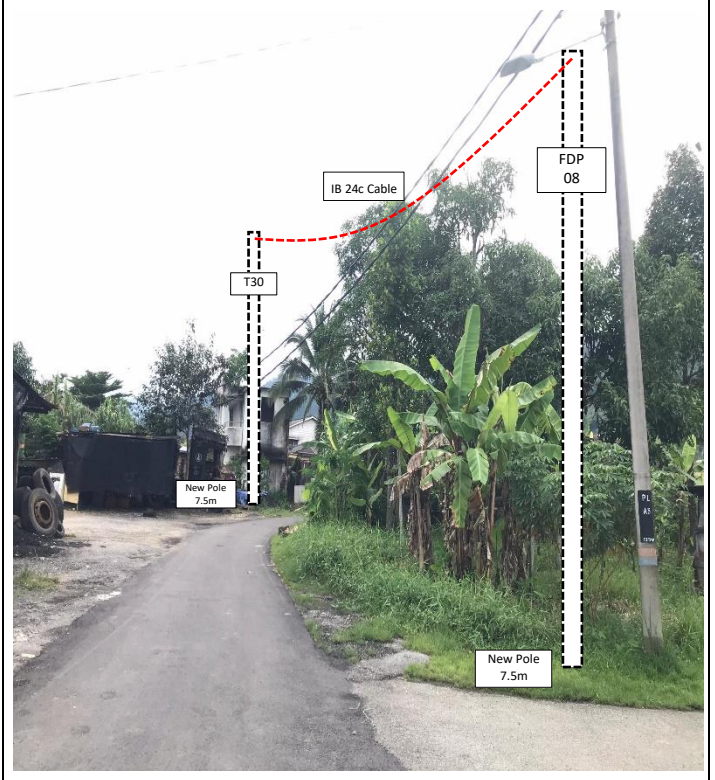
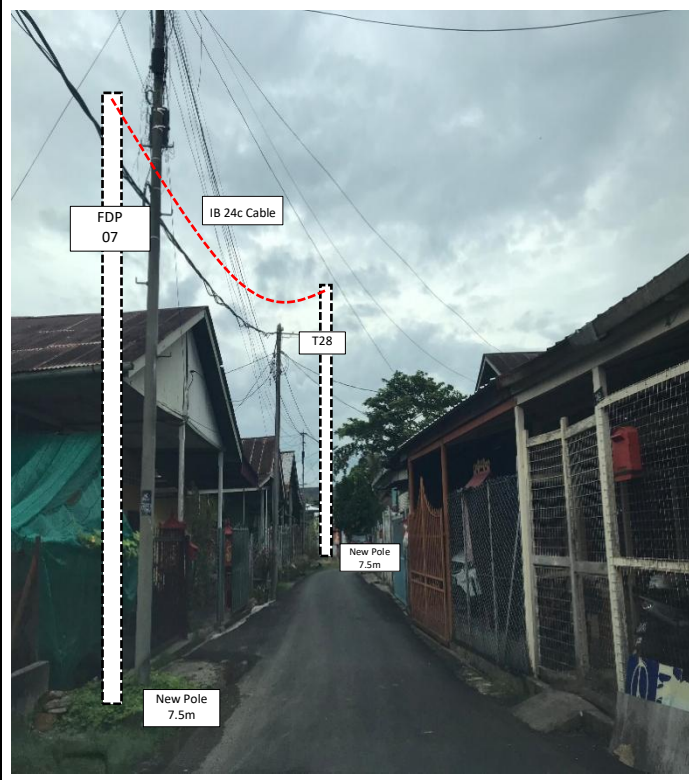
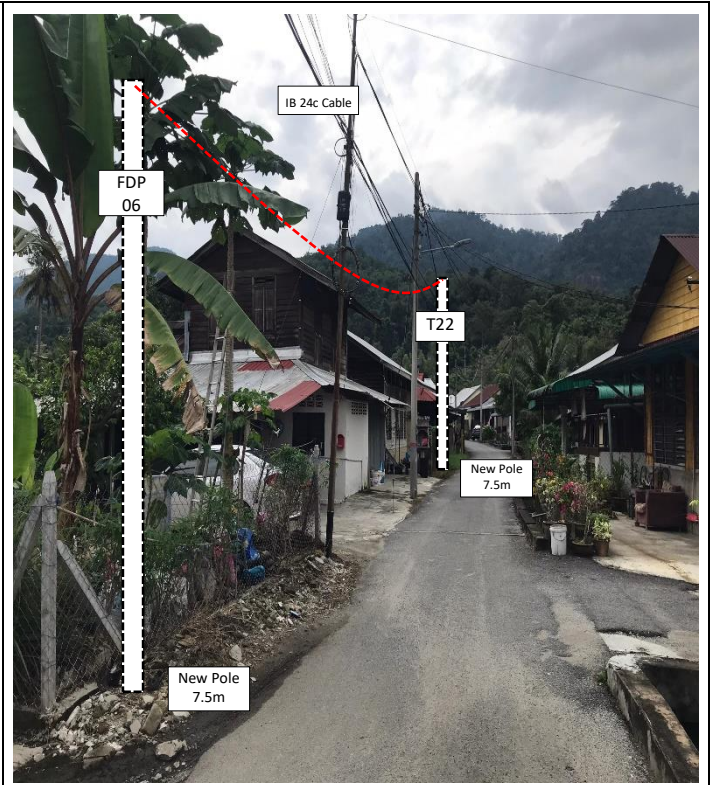
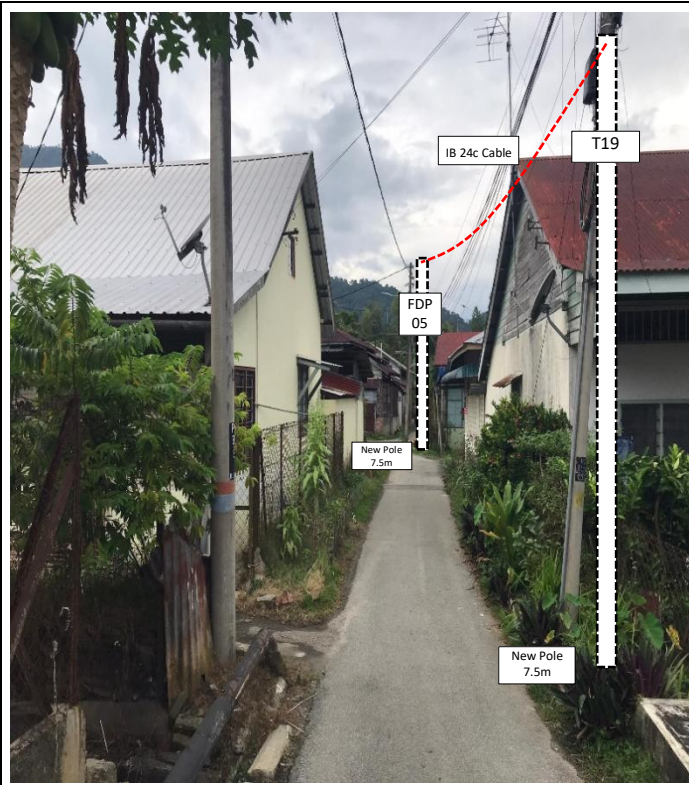
4.0 PROPOSED NEW POLE

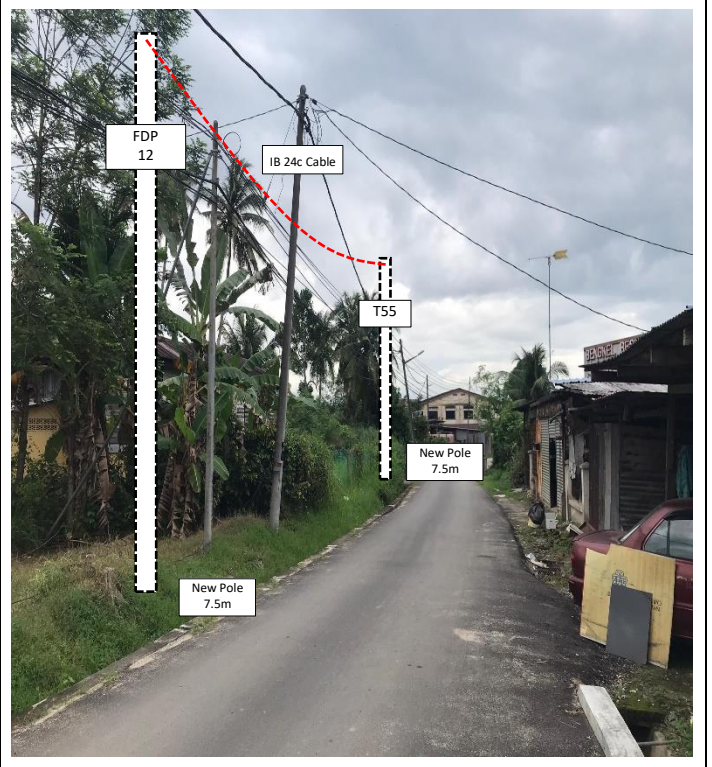
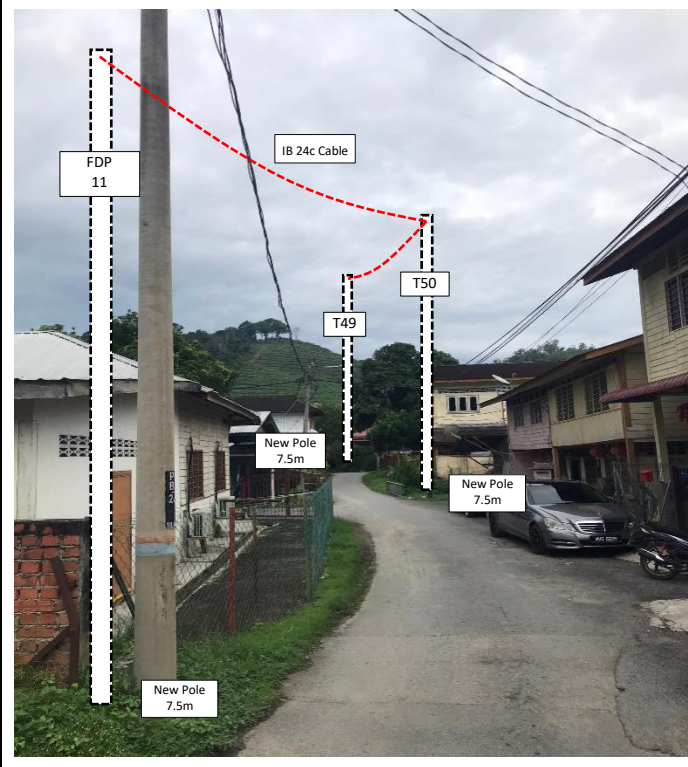
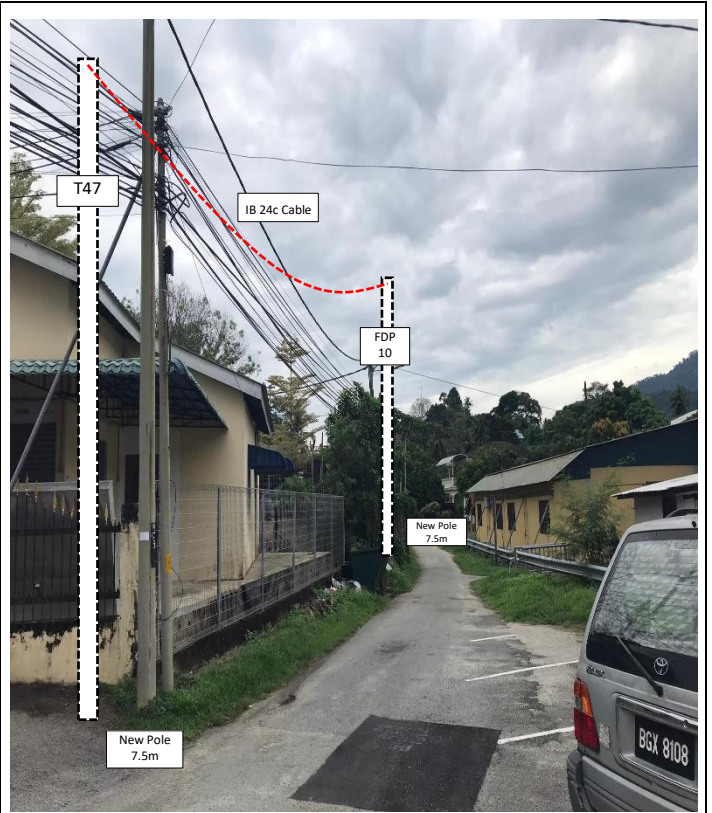
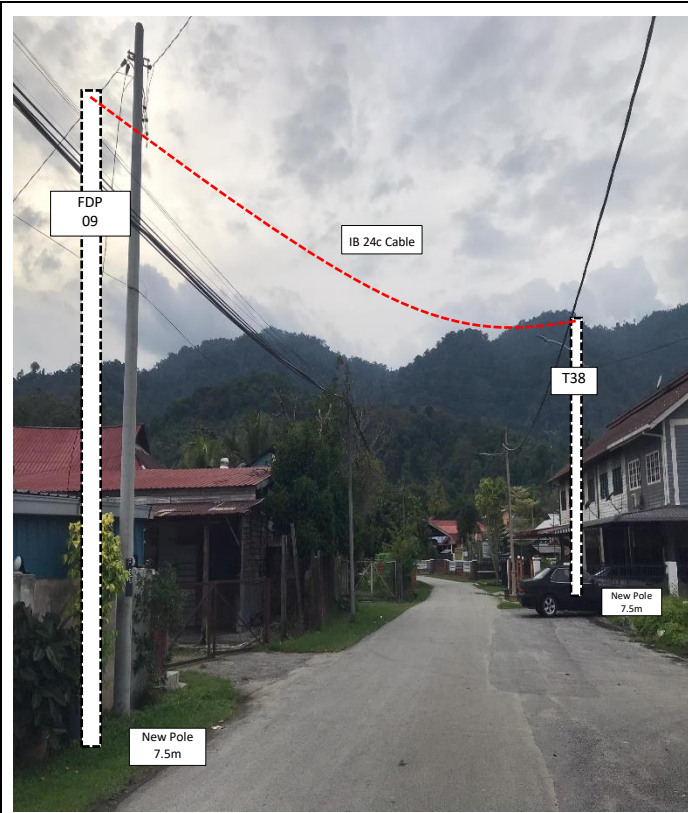
Proposed New Pole Coordinate					
No.	Pole Number	Distance (m)	Latitude	Longitude	Local Authority
1	FDC POLE	10	5.109590	100.965471	Majlis Daerah Lenggong
2	T001	18	5.109590	100.965471	Majlis Daerah Lenggong
3	T002	20	5.109748	100.965468	Majlis Daerah Lenggong
4	T003	29	5.109927	100.965453	Majlis Daerah Lenggong
5	T004	16	5.109912	100.965194	Majlis Daerah Lenggong
6	T005	22	5.109905	100.965053	Majlis Daerah Lenggong
7	T006	20	5.109895	100.964850	Majlis Daerah Lenggong
8	T007	27	5.109882	100.964669	Majlis Daerah Lenggong
9	T008	22	5.109640	100.964623	Majlis Daerah Lenggong
10	T009	24	5.109448	100.964588	Majlis Daerah Lenggong
11	T010	26	5.109235	100.964547	Majlis Daerah Lenggong
12	T011	18	5.109206	100.964313	Majlis Daerah Lenggong
13	T012	23	5.109192	100.964154	Majlis Daerah Lenggong
14	T013	35	5.110115	100.965054	Majlis Daerah Lenggong
15	T014	17	5.110427	100.965031	Majlis Daerah Lenggong
16	T015	25	5.110072	100.965409	Majlis Daerah Lenggong
17	T016	30	5.110296	100.965426	Majlis Daerah Lenggong
18	T017	31	5.110332	100.965695	Majlis Daerah Lenggong
19	T018	19	5.110337	100.965974	Majlis Daerah Lenggong
20	T019	28	5.110509	100.965951	Majlis Daerah Lenggong
21	T020	30	5.110762	100.965921	Majlis Daerah Lenggong
22	T021	29	5.110465	100.966216	Majlis Daerah Lenggong
23	T022	30	5.110436	100.966472	Majlis Daerah Lenggong
24	T023	23	5.110332	100.966721	Majlis Daerah Lenggong
25	T024	30	5.110261	100.966917	Majlis Daerah Lenggong
26	T025	33	5.110253	100.967190	Majlis Daerah Lenggong
27	T026	34	5.110100	100.967441	Majlis Daerah Lenggong
28	T027	29	5.110341	100.967621	Majlis Daerah Lenggong
29	T028	27	5.110534	100.967790	Majlis Daerah Lenggong
30	T029	30	5.110441	100.968018	Majlis Daerah Lenggong
31	T030	25	5.110310	100.968254	Majlis Daerah Lenggong
32	T031	10	5.110471	100.968405	Majlis Daerah Lenggong
33	T032	21	5.109495	100.965471	Majlis Daerah Lenggong
34	T033	30	5.109337	100.965576	Majlis Daerah Lenggong
35	T034	22	5.109362	100.965841	Majlis Daerah Lenggong
36	T035	24	5.109378	100.966042	Majlis Daerah Lenggong
37	T036	23	5.109370	100.966257	Majlis Daerah Lenggong
38	T037	35	5.109417	100.966461	Majlis Daerah Lenggong
39	T038	25	5.109285	100.966752	Majlis Daerah Lenggong

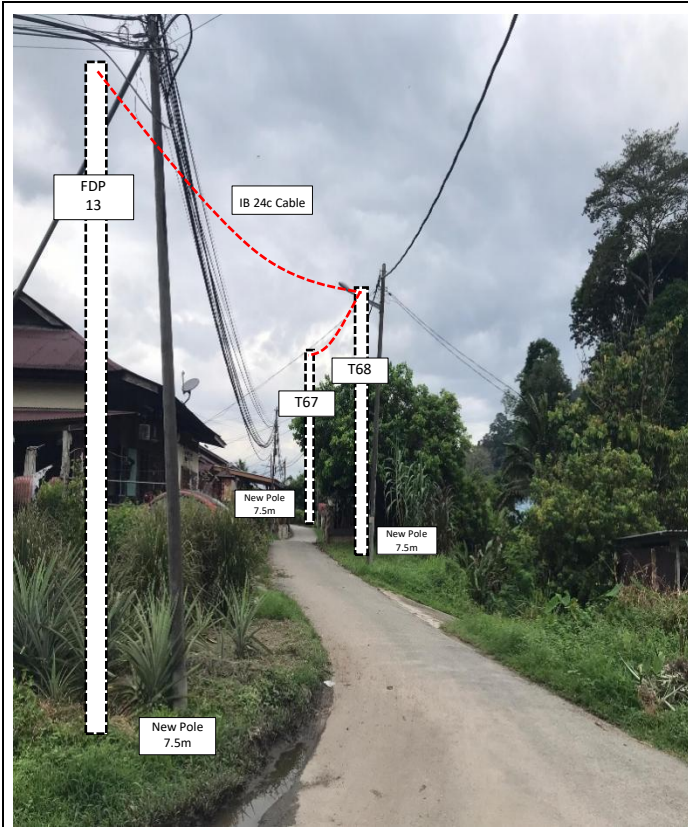
No.	Pole Number	Distance (m)	Latitude	Longitude	Local Authority
40	T039	27	5.109111	100.966891	Majlis Daerah Lenggong
41	T040	25	5.108978	100.967095	Majlis Daerah Lenggong
42	T041	31	5.108851	100.967283	Majlis Daerah Lenggong
43	T042	21	5.108725	100.967531	Majlis Daerah Lenggong
44	T043	41	5.108638	100.967698	Majlis Daerah Lenggong
45	T044	22	5.108331	100.967493	Majlis Daerah Lenggong
46	T045	14	5.108130	100.967470	Majlis Daerah Lenggong
47	T046	30	5.108036	100.967385	Majlis Daerah Lenggong
48	T047	18	5.107833	100.967210	Majlis Daerah Lenggong
49	T048	37	5.107699	100.967123	Majlis Daerah Lenggong
50	T049	35	5.108224	100.967173	Majlis Daerah Lenggong
51	T050	32	5.108375	100.966898	Majlis Daerah Lenggong
52	T051	29	5.108558	100.966672	Majlis Daerah Lenggong
53	T052	12	5.108096	100.966940	Majlis Daerah Lenggong
54	T053	33	5.108040	100.966850	Majlis Daerah Lenggong
55	T054	31	5.107887	100.966595	Majlis Daerah Lenggong
56	T055	27	5.107748	100.966352	Majlis Daerah Lenggong
57	T056	22	5.107598	100.966164	Majlis Daerah Lenggong
58	T057	26	5.107493	100.966003	Majlis Daerah Lenggong
59	T058	21	5.107377	100.965800	Majlis Daerah Lenggong
60	T059	30	5.107273	100.965642	Majlis Daerah Lenggong
61	T060	27	5.107120	100.965418	Majlis Daerah Lenggong
62	T061	27	5.106960	100.965241	Majlis Daerah Lenggong
63	T062	24	5.106754	100.965105	Majlis Daerah Lenggong
64	T063	25	5.106578	100.964976	Majlis Daerah Lenggong
65	T064	23	5.106398	100.964842	Majlis Daerah Lenggong
66	T065	17	5.106209	100.964761	Majlis Daerah Lenggong
67	T066	19	5.106083	100.964669	Majlis Daerah Lenggong
68	T067	27	5.105972	100.964540	Majlis Daerah Lenggong
69	T068	17	5.105818	100.964360	Majlis Daerah Lenggong
70	T069	17	5.105763	100.964221	Majlis Daerah Lenggong

5.0 SITE PHOTOS - PROPOSED NEW POLE











PROJEK PENYEDIAAN DAN PENYELENGGARAAN POINT OF PRESENCE (POP)
FASA 2: HAB INFRASTRUTUK GENTIAN OPTIK BERHAMPIRAN DENGAN
SEKOLAH, KAWASAN PERINDUSTRIAN, PREMIS KERAJAAN DAN KOMUNITI
SEKITARNYA OLEH KEMENTERIAN KOMUNIKASI MALAYSIA – ZON UTARA
(KKMM.400-11/17/132(1))



WABTECH SDN BHD
(1398387-X)

6.0 3rd PARTIES DEPENDENCIES

NO	LOCAL COUNCIL / AUTHORITY	REMARK
1	Majlis Daerah Lenggong	1726m
2	JKR Daerah Lenggong	-

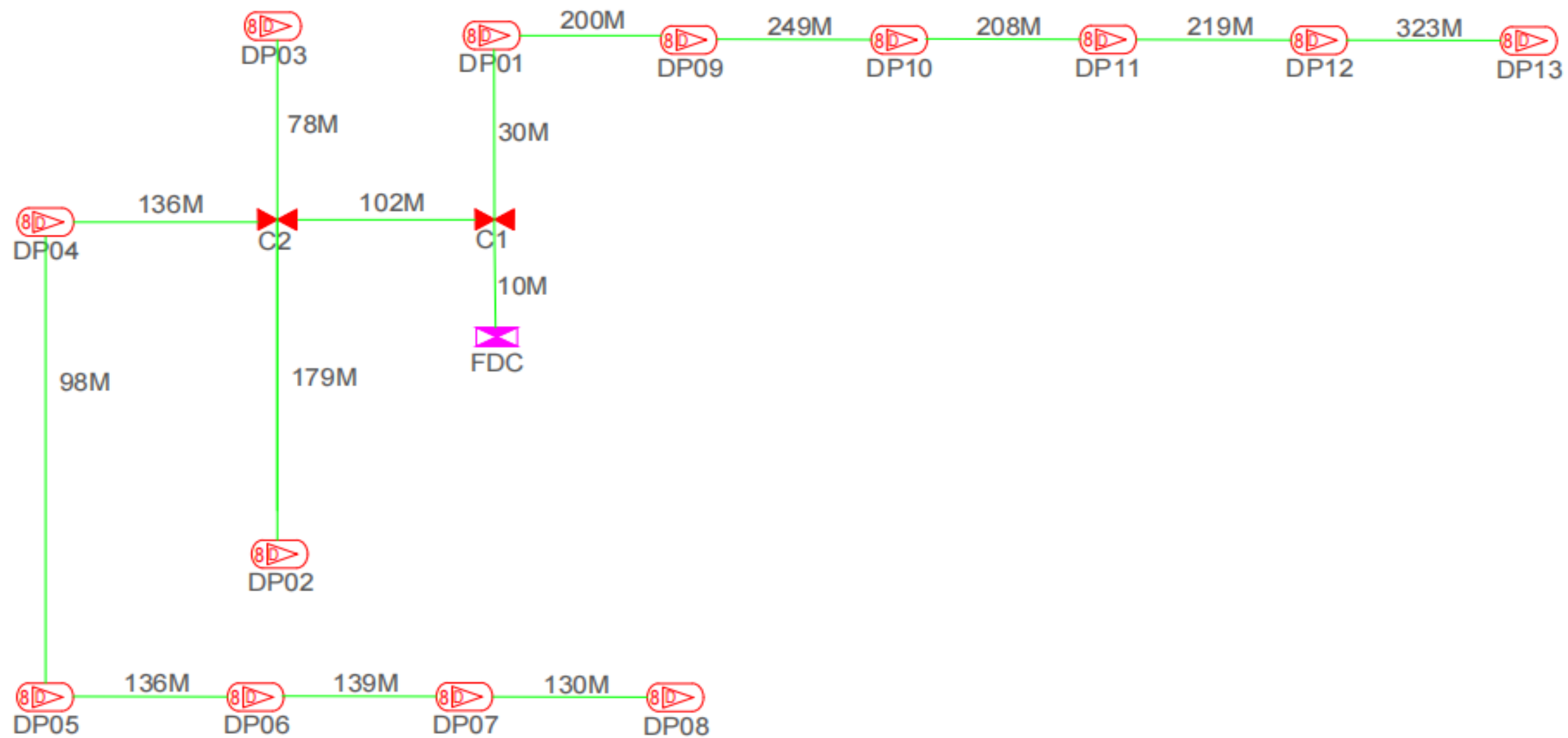


TOTAL HOME PASSES: 104 UNITS

LEGEND

12C FDC	Installed 1:4 splitter in FDC	Installed Pole (9m)	New Manhole (RC7)	Tension Small / Tension Big	MH1	MH NO.	
24C FDC	FDP with (1:8) splitter	Installed Riser	House Number	Existing Manhole	TMS-1	Existing THB Pole NO.	
48C FDC	Closure	Suspension Big	Existing THB Pole	C21	Closure NO.	PO01	New Pole NO.
96C FDC	New Manhole (Pit)	Suspension Small	LOOP	IDP1	FDP NO.	SEE SHEET 00X	SEE SHEET 00X
144C FDC	Installed Pole (7.5M)	FDC	FDP Boundary	FC	FDC NO.		

KEY PLAN : 	PROJECT OWNER : KEMENTERIAN KOMUNIKASI	MAIN CONTRACTOR : PRIVASAT	SUB-CONTRACTOR : WBTECH SON BHD	PROJECT TITLE : CONTRACT FOR THE PROVISION OF SUPPLY, INSTALLATION, AND COMMISSIONING OF FTTH NETWORK INFRASTRUCTURE - POP 2 PROJECT D-SIDE - ABB7035 - SK BUKIT BALAI	DRAWING TITLE: ABB7035 SK BUKIT BALAI	Design By ENGINEER Date DATE Drawn By CAD ENGINEER Scale NTS Checked By ENGINEER Job Number JOB/NUMBER
					PROJECT PHASE: PROJECT PHASE	DRAWING NUMBER : DRAWING/NUMBER THIS PRINT AND ITS COPYRIGHT ARE THE PROPERTY



TOTAL FOC DISTANCE: 2,237 METERS

LEGEND

12C FOC	Installed 1:4 splitter in FOC	Installed Pole (9m)	New Manhole (R/C7)	Tension Small / Tension Big	M11	M1 NO.	
24C FOC	FDP with (1:8) splitter	Installed Riser	House Number	Existing Manhole	TKS-1	Existing THE Pole NO.	
48C FOC	Closure	Suspension Big	Existing 10M Pole	C1	Closure NO.	PE01	New Pole NO.
96C FOC	New Manhole (Pit)	Suspension Small	LSOP	FDPI	Closure NO.	SEE SHEET BOX	SEE SHEET BOX
144C FOC	Installed Pole (7.5M)	FDC	FDP Boundary	FDI	FDC NO.		

KEY PLAN :	PROJECT OWNER :	MAIN CONTRACTOR :	SUB-CONTRACTOR :	PROJECT TITLE : CONTRACT FOR THE PROVISION OF SUPPLY, INSTALLATION, AND COMMISSIONING OF FTTX NETWORK INFRASTRUCTURE - POP 2 PROJECT D-SIDE - ABB7035 - SK BUKIT BALAI	DRAWING TITLE : ABB7035 SK BUKIT BALAI	Design By : ENGINEER Date : DATE
						Drawn By : CAD ENGINEER Scale : NTS
Checked By : ENGINEER Job Number : JOB/NUMBER						DRAWING NUMBER : Sheet : DRAWING/NUMBER 1/1
THIS PRINT AND ITS COPYRIGHT ARE THE PROPERTY						Size : A3