

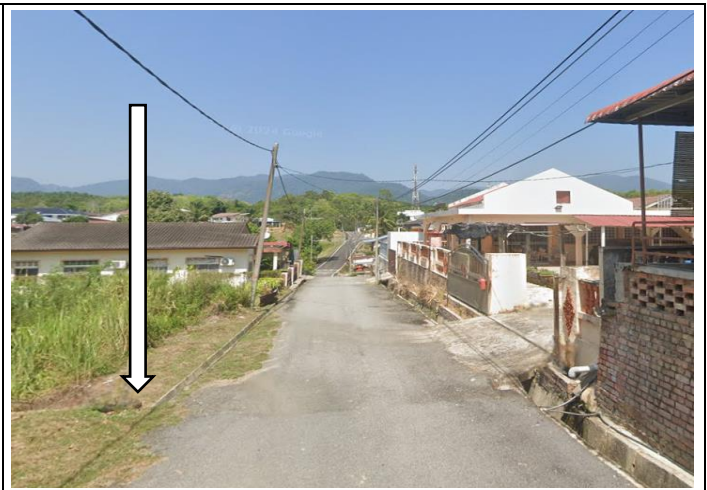
TECHNICAL PROPOSAL

POP2 ABC7043 SEKOLAH JENIS KEBANGSAAN (CINA) PADANG GRUS (D-SIDE)

Company Name : WabTech Sdn Bhd
Company Address : 101-1, Jalan Metro Sendayan, 71950 Seremban, Negeri Sembilan.
Prepared By : Sharifful Bahrin bin Che Meh
Date : 17/12/2024



Point A



Point B

Starting Point

Site / Boundary Name : Sekolah Jenis Kebangsaan (Cina) Padang Grus
 Address : Kampung Baru Padang Grus, 33420 Lenggong, Perak.
 District : Lenggong
 Postcode : 33420
 State : Perak
 GPS Coordinate : 5.163803, 101.014234
 LRD : A

End Point

Site / Boundary Name : Kampung Baru Padang Grus
 Address : Kampung Baru Padang Grus, 33420 Lenggong, Perak.
 District : Lenggong
 Postcode : 33420
 State : Perak
 GPS Coordinate : 5.166368, 101.015879
 LRD : B



PROJEK PENYEDIAAN DAN PENYELENGGARAAN POINT OF PRESENCE (POP)
 FASA 2: HAB INFRASTRUTUK GENTIAN OPTIK BERHAMPIRAN DENGAN
 SEKOLAH, KAWASAN PERINDUSTRIAN, PREMIS KERAJAAN DAN KOMUNITI
 SEKITARNYA OLEH KEMENTERIAN KOMUNIKASI MALAYSIA – ZON UTARA
 (KKMM.400-11/17/132(1))



WABTECH SDN BHD
 (1388287-X)

1.0 WORK SUMMARY

| NO | PROPOSED DISTANCE AND METHOD | UNIT | QUANTITY |
|-------|---------------------------------------|------|----------|
| 1 | Horizontal Directional Drilling (HDD) | m | 0 |
| 2 | Carriage Way Open Trench (CW) | m | 0 |
| 3 | Grass Verge Open Trenching (GV) | m | 0 |
| 4 | Micro Trenching (MT) | m | 0 |
| Total | | | |

| NO | OTHER INFORMATION | UNIT | QUANTITY |
|----|--|------|----------|
| 1 | Installation of Short Span ADSS Fibre Cables | m | 2649 |
| 2 | Install New Pole | ea | 54 |
| 3 | Install New JRC7 Manhole | ea | 0 |
| 4 | Install GI Riser 100mm | ea | 0 |
| 5 | Install Fiber Distribution Point and Closure (Splicing, Termination and Testing) | ea | 17 |
| 6 | Estimated Time Required for Completion | days | 30 |



PROJEK PENYEDIAAN DAN PENYELENGGARAAN POINT OF PRESENCE (POP)
FASA 2: HAB INFRASTRUTUK GENTIAN OPTIK BERHAMPIRAN DENGAN
SEKOLAH, KAWASAN PERINDUSTRIAN, PREMIS KERAJAAN DAN KOMUNITI
SEKITARNYA OLEH KEMENTERIAN KOMUNIKASI MALAYSIA – ZON UTARA
(KKMM.400-11/17/132(1))



WABTECH SDN BHD
(1398287-9)

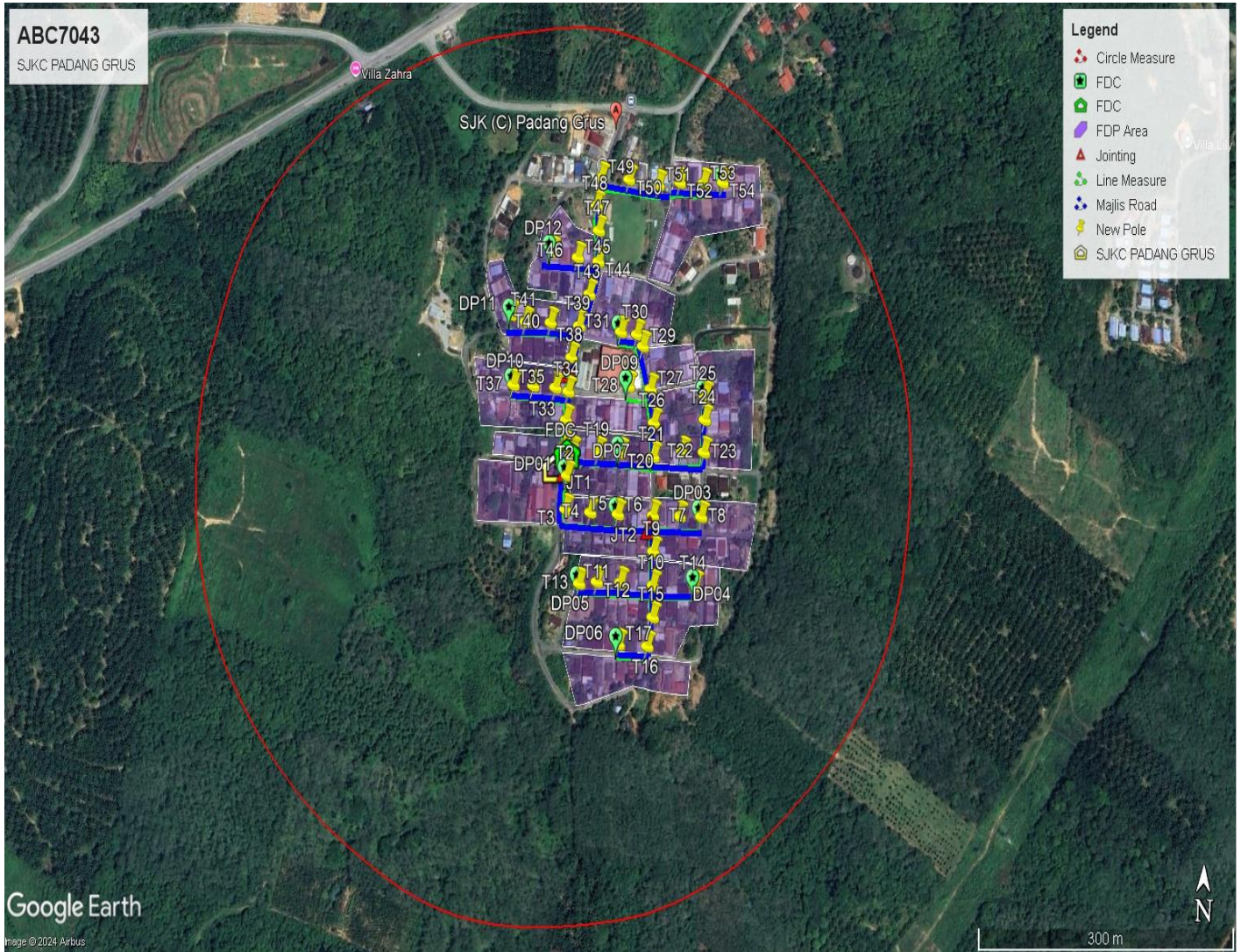
2.0 LOCAL AUTHORITY SUMMARY

Daerah Lenggong

| NO | ITEMS | Owner | Quantity | Distance (m) |
|---------------------------|----------|--------|----------|--------------|
| 1 | HDD | JKR | - | - |
| | | Majlis | - | - |
| | | PDT | - | - |
| 2 | New Pole | JKR | - | - |
| | | Majlis | 54 | 1631 |
| | | PDT | - | - |
| Total Distance (m) | | | | 1631 |

3.0 SITE PLAN (KMZ)

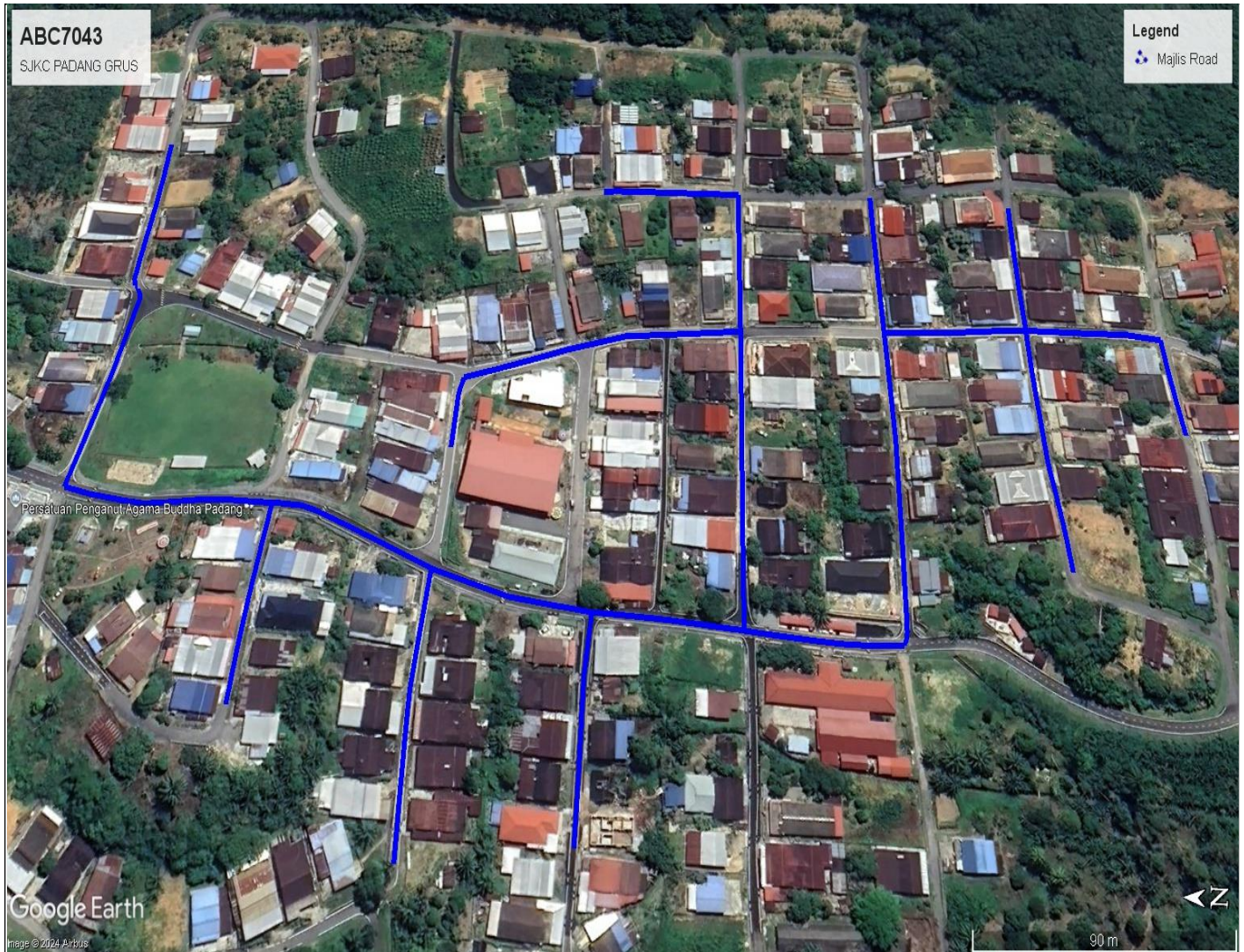
3.1 Overview Site Area



3.2 Site boundary



3.3 Road Boundary



4.0 PROPOSED NEW POLE

| Proposed New Pole Coordinate | | | | | |
|------------------------------|-------------|--------------|----------|------------|------------------------|
| No. | Pole Number | Distance (m) | Latitude | Longitude | Local Authority |
| 1 | FDC POLE | 20 | 5.163803 | 101.014234 | Majlis Daerah Lenggong |
| 2 | T001 | 20 | 5.163803 | 101.014234 | Majlis Daerah Lenggong |
| 3 | T002 | 33 | 5.163639 | 101.014205 | Majlis Daerah Lenggong |
| 4 | T003 | 30 | 5.163336 | 101.014202 | Majlis Daerah Lenggong |
| 5 | T004 | 36 | 5.163320 | 101.014487 | Majlis Daerah Lenggong |
| 6 | T005 | 42 | 5.163317 | 101.014803 | Majlis Daerah Lenggong |
| 7 | T006 | 33 | 5.163324 | 101.015203 | Majlis Daerah Lenggong |
| 8 | T007 | 35 | 5.163329 | 101.015505 | Majlis Daerah Lenggong |
| 9 | T008 | 25 | 5.163335 | 101.015749 | Majlis Daerah Lenggong |
| 10 | T009 | 35 | 5.163004 | 101.015221 | Majlis Daerah Lenggong |
| 11 | T010 | 35 | 5.162706 | 101.015228 | Majlis Daerah Lenggong |
| 12 | T011 | 41 | 5.162714 | 101.014862 | Majlis Daerah Lenggong |
| 13 | T012 | 30 | 5.162708 | 101.014593 | Majlis Daerah Lenggong |
| 14 | T013 | 23 | 5.162684 | 101.014394 | Majlis Daerah Lenggong |
| 15 | T014 | 52 | 5.162722 | 101.015701 | Majlis Daerah Lenggong |
| 16 | T015 | 27 | 5.162426 | 101.015239 | Majlis Daerah Lenggong |
| 17 | T016 | 27 | 5.162169 | 101.015188 | Majlis Daerah Lenggong |
| 18 | T017 | 35 | 5.162171 | 101.014864 | Majlis Daerah Lenggong |
| 19 | T018 | 33 | 5.163857 | 101.014258 | Majlis Daerah Lenggong |
| 20 | T019 | 28 | 5.163864 | 101.014552 | Majlis Daerah Lenggong |
| 21 | T020 | 28 | 5.163867 | 101.014807 | Majlis Daerah Lenggong |
| 22 | T021 | 40 | 5.163847 | 101.015184 | Majlis Daerah Lenggong |
| 23 | T022 | 36 | 5.163902 | 101.015511 | Majlis Daerah Lenggong |
| 24 | T023 | 25 | 5.163909 | 101.015755 | Majlis Daerah Lenggong |
| 25 | T024 | 31 | 5.164200 | 101.015755 | Majlis Daerah Lenggong |
| 26 | T025 | 26 | 5.164411 | 101.015749 | Majlis Daerah Lenggong |
| 27 | T026 | 33 | 5.164150 | 101.015177 | Majlis Daerah Lenggong |
| 28 | T027 | 44 | 5.164455 | 101.015125 | Majlis Daerah Lenggong |
| 29 | T028 | 28 | 5.164469 | 101.014874 | Majlis Daerah Lenggong |
| 30 | T029 | 43 | 5.164836 | 101.015021 | Majlis Daerah Lenggong |
| 31 | T030 | 12 | 5.164941 | 101.014949 | Majlis Daerah Lenggong |
| 32 | T031 | 21 | 5.164958 | 101.014763 | Majlis Daerah Lenggong |
| 33 | T032 | 25 | 5.163903 | 101.014163 | Majlis Daerah Lenggong |
| 34 | T033 | 29 | 5.164137 | 101.014171 | Majlis Daerah Lenggong |
| 35 | T034 | 17 | 5.164393 | 101.014183 | Majlis Daerah Lenggong |
| 36 | T035 | 28 | 5.164421 | 101.014033 | Majlis Daerah Lenggong |
| 37 | T036 | 28 | 5.164426 | 101.013779 | Majlis Daerah Lenggong |
| 38 | T037 | 25 | 5.164428 | 101.013548 | Majlis Daerah Lenggong |



PROJEK PENYEDIAAN DAN PENYELENGGARAAN POINT OF PRESENCE (POP)
FASA 2: HAB INFRASTRUTUK GENTIAN OPTIK BERHAMPIRAN DENGAN
SEKOLAH, KAWASAN PERINDUSTRIAN, PREMIS KERAJAAN DAN KOMUNITI
SEKITARNYA OLEH KEMENTERIAN KOMUNIKASI MALAYSIA – ZON UTARA
(KKMM.400-11/17/132(1))

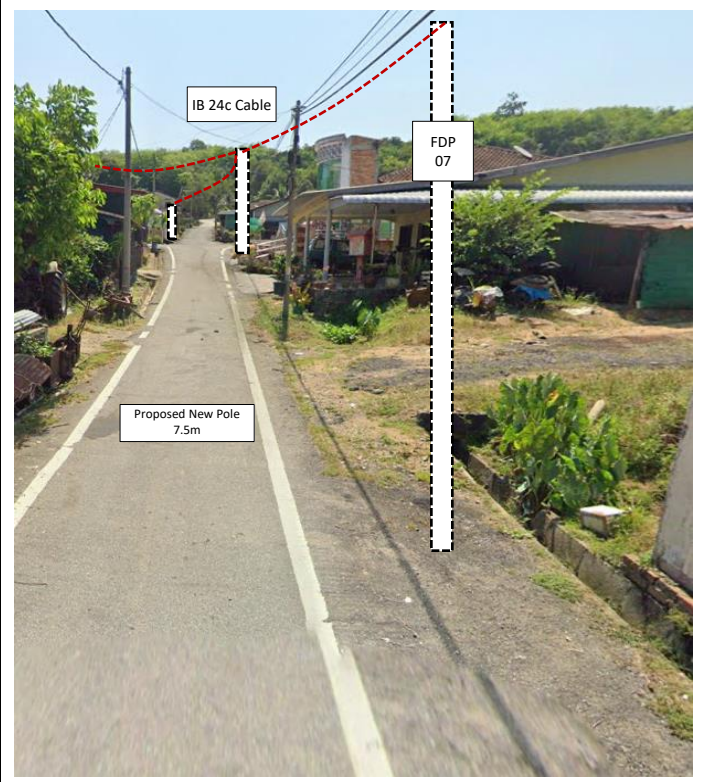
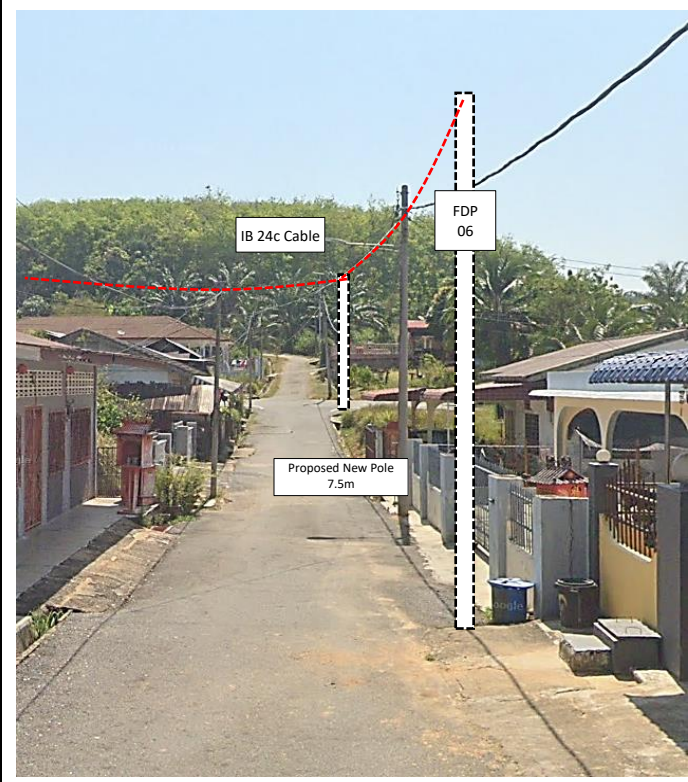
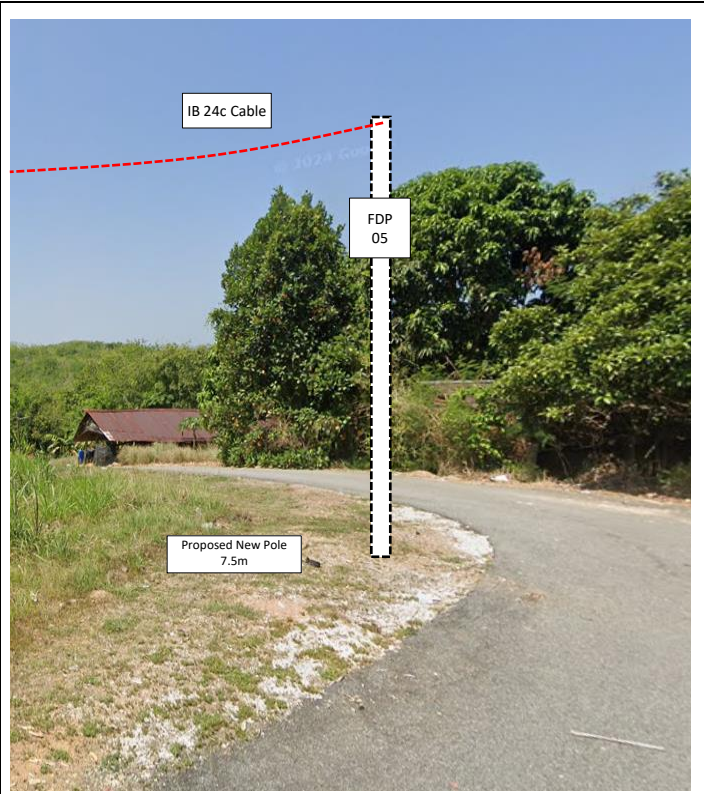


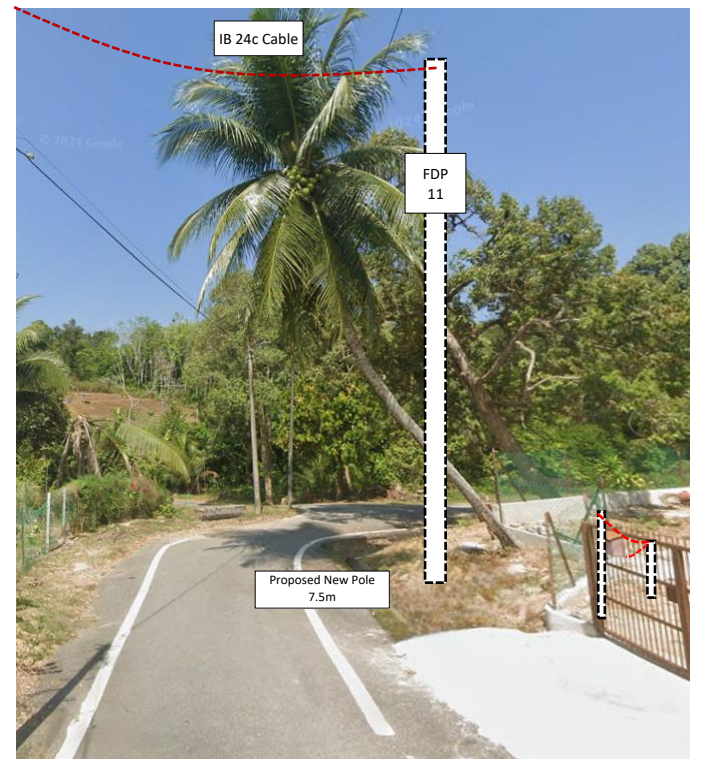
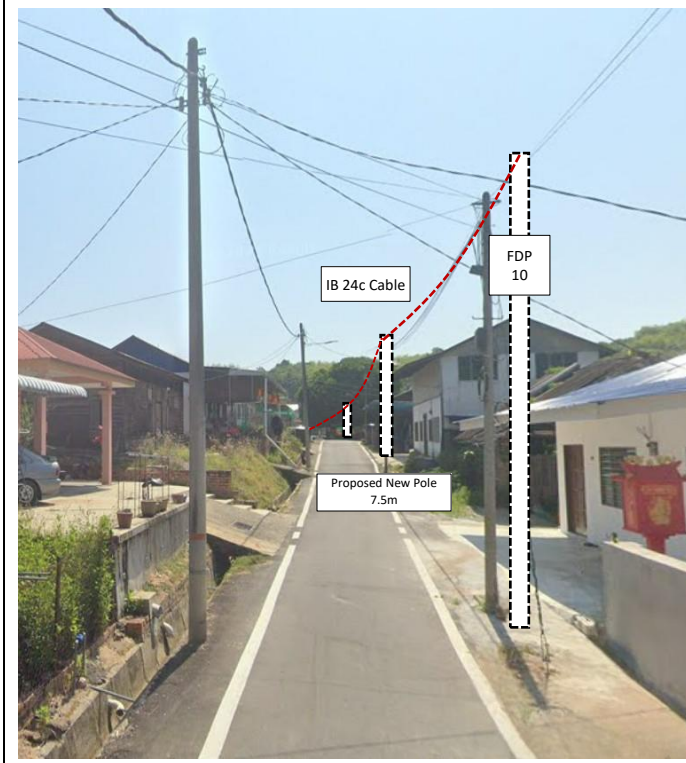
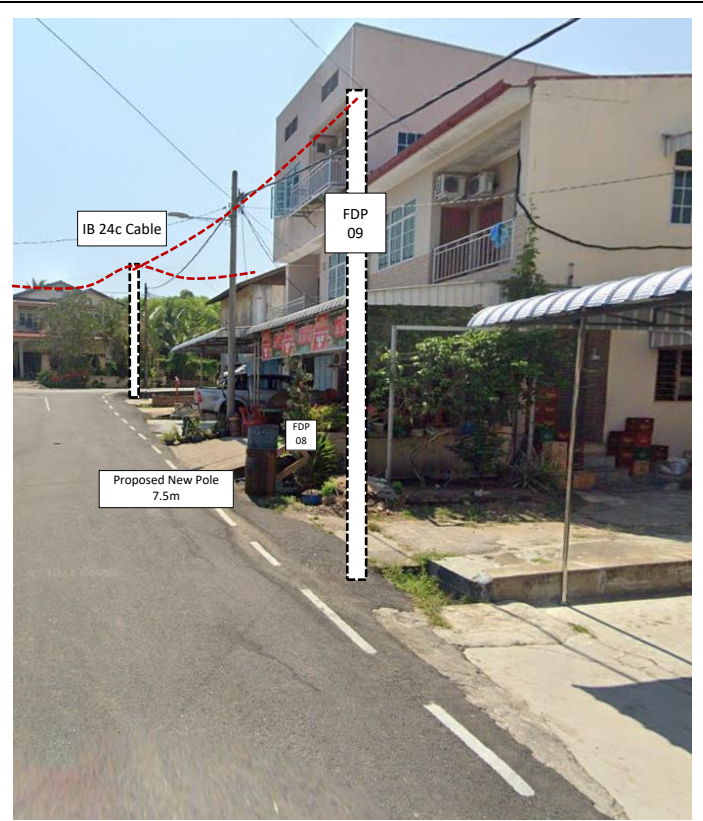
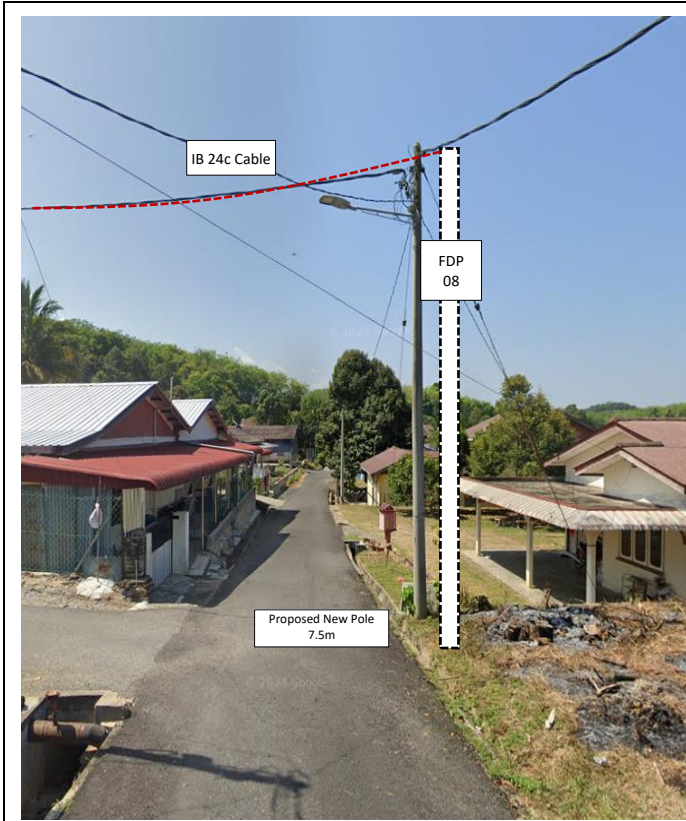
WABTECH SDN BHD
(1398387-0)

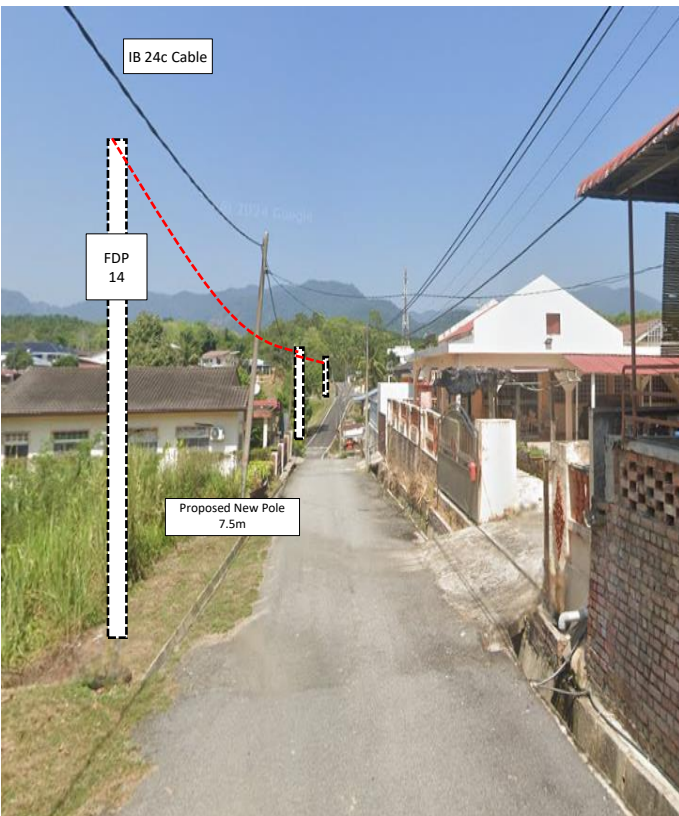
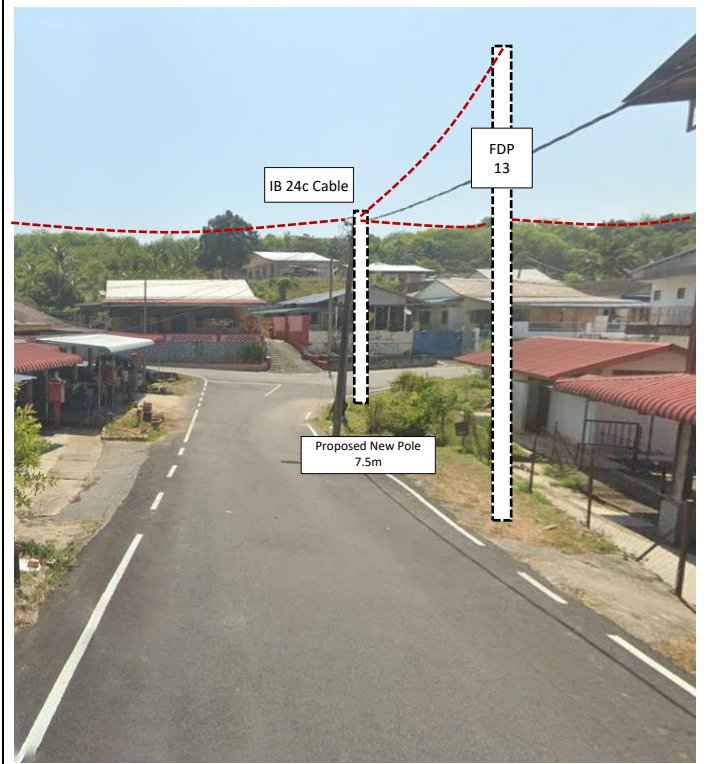
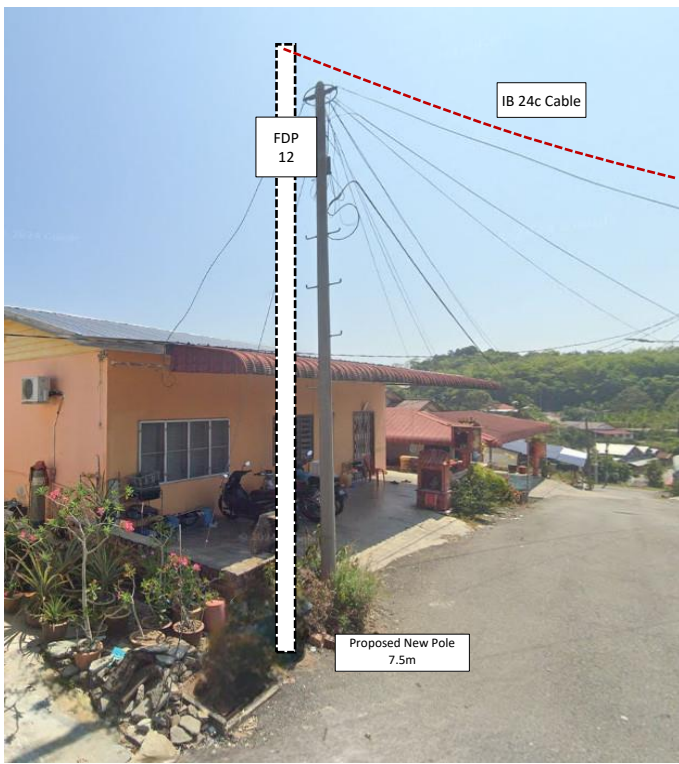
| | | | | | |
|----|------|----|----------|------------|------------------------|
| 39 | T038 | 34 | 5.164701 | 101.014204 | Majlis Daerah Lenggong |
| 40 | T039 | 30 | 5.164989 | 101.014280 | Majlis Daerah Lenggong |
| 41 | T040 | 35 | 5.164999 | 101.013953 | Majlis Daerah Lenggong |
| 42 | T041 | 31 | 5.164993 | 101.013663 | Majlis Daerah Lenggong |
| 43 | T042 | 20 | 5.165053 | 101.013494 | Majlis Daerah Lenggong |
| 44 | T043 | 34 | 5.165278 | 101.014383 | Majlis Daerah Lenggong |
| 45 | T044 | 34 | 5.165578 | 101.014474 | Majlis Daerah Lenggong |
| 46 | T045 | 27 | 5.165599 | 101.014236 | Majlis Daerah Lenggong |
| 47 | T046 | 33 | 5.165639 | 101.013937 | Majlis Daerah Lenggong |
| 48 | T047 | 30 | 5.165860 | 101.014465 | Majlis Daerah Lenggong |
| 49 | T048 | 25 | 5.166087 | 101.014431 | Majlis Daerah Lenggong |
| 50 | T049 | 30 | 5.166349 | 101.014472 | Majlis Daerah Lenggong |
| 51 | T050 | 35 | 5.166352 | 101.014795 | Majlis Daerah Lenggong |
| 52 | T051 | 39 | 5.166316 | 101.015138 | Majlis Daerah Lenggong |
| 53 | T052 | 27 | 5.166348 | 101.015385 | Majlis Daerah Lenggong |
| 54 | T053 | 30 | 5.166352 | 101.015655 | Majlis Daerah Lenggong |
| 55 | T054 | 24 | 5.166368 | 101.015879 | Majlis Daerah Lenggong |

5.0 SITE PHOTOS - PROPOSED NEW POLE











PROJEK PENYEDIAAN DAN PENYELENGGARAAN POINT OF PRESENCE (POP)
FASA 2: HAB INFRASTRUTUK GENTIAN OPTIK BERHAMPIRAN DENGAN
SEKOLAH, KAWASAN PERINDUSTRIAN, PREMIS KERAJAAN DAN KOMUNITI
SEKITARNYA OLEH KEMENTERIAN KOMUNIKASI MALAYSIA – ZON UTARA
(KKMM.400-11/17/132(1))

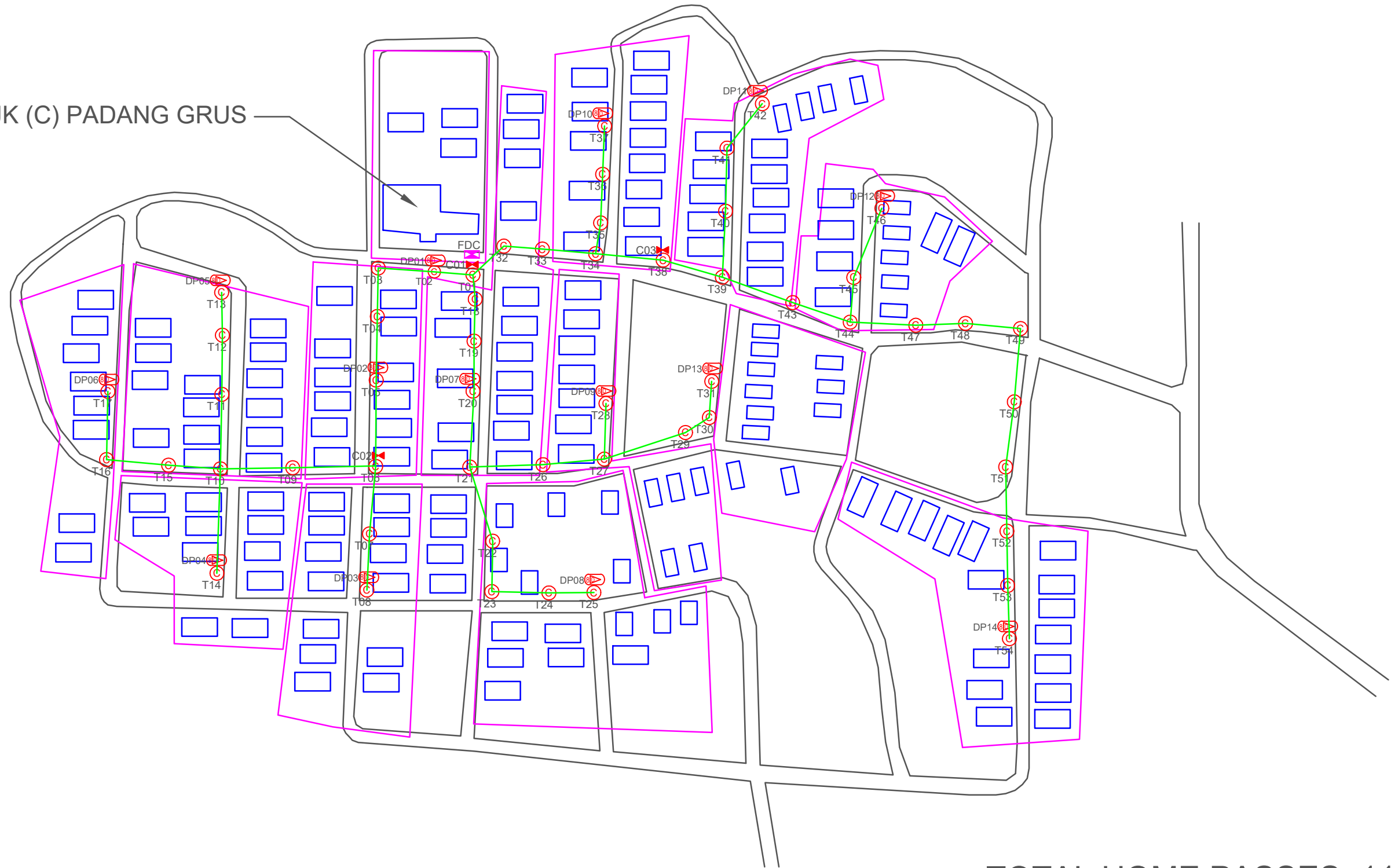


WABTECH SON BHD
(1998387-9)

6.0 3rd PARTIES DEPENDENCIES

| NO | LOCAL COUNCIL / AUTHORITY | REMARK |
|----|---------------------------|--------|
| 1 | Majlis Daerah Lenggong | 1631 |
| 2 | JKR Daerah Lenggong | |

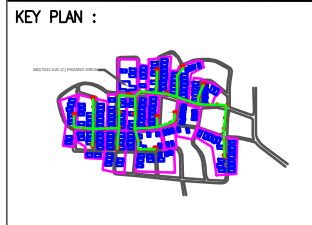
ABC7043 SJK (C) PADANG GRUS



TOTAL HOME PASSES: 112 UNITS

LEGEND

| | | | | | | | | | | |
|--|----------|-------------------------------|--|---------------------|--|-------------------|--|-----------------------------|--|-----------------------|
| | 12C FOC | Installed 1:4 splitter in FDC | | Installed Pole (9m) | | New Manhole(JRC7) | | Tension Small / Tension Big | | MH NO. |
| | 24C FOC | FDP with (1:8) splitter | | Installed Riser | | House Number | | Existing Manhole | | Existing TNB Pole NO. |
| | 48C FOC | Closure | | Suspension Big | | Existing TNB Pole | | Closure NO. | | New Pole NO. |
| | 96C FOC | New Manhole (PT) | | Suspension Small | | LOOP | | FDP NO. | | SEE A-A in this page |
| | 144C FOC | Installed Pole (7.5M) | | FDC | | FDP Boundary | | FDC NO. | | SEE SHEET XXXX |



PROJECT OWNER :

KEMENTERIAN KOMUNIKASI

MAIN CONTRACTOR

PRIVASAT

SUB-CONTRACTOR :

WABTECH SDN BHD

PROJECT TITLE:

CONTRACT FOR THE PROVISION OF SUPPLY, INSTALLATION, AND COMMISSIONING OF FTTX NETWORK INFRASTRUCTURE - POP 2 PROJECT D-SIDE - ABC7043 - SJK (C) PADANG GRUS

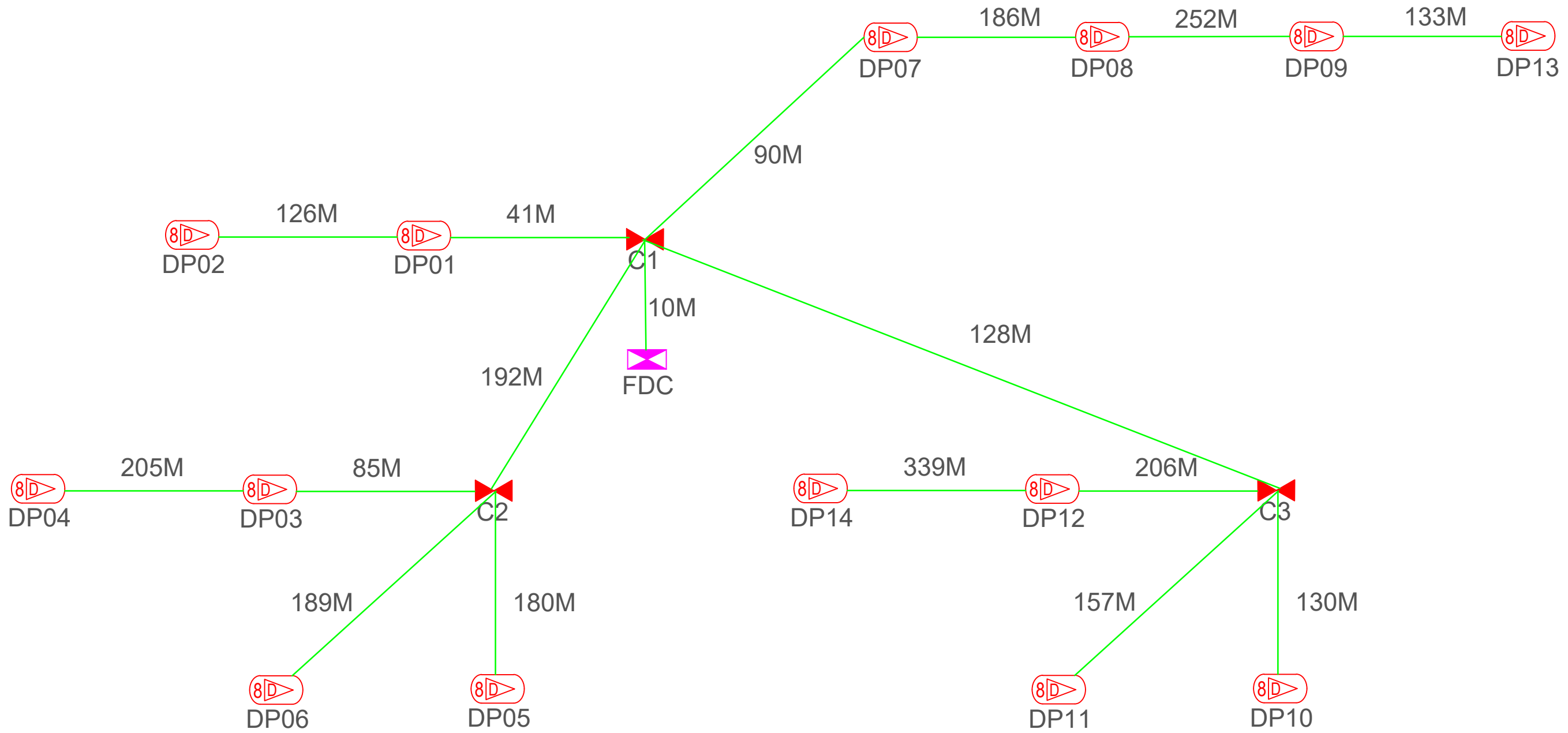
DRAWING TITLE:

ABC7043 SJK (C) PADANG GRUS

PROJECT PHASE:

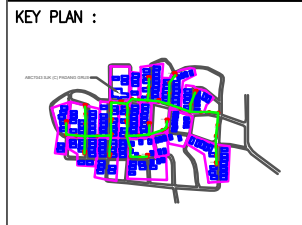
PROJECT PHASE

| | | | |
|---|--------------|------------|------------|
| Design By | ENGINEER | Date | DATE |
| Drawn By | CAD ENGINEER | Scale | NTS |
| Checked By | ENGINEER | Job Number | JOB/NUMBER |
| DRAWING NUMBER : | | Sheet : | |
| DRAWING/NUMBER | | 1/1 | |
| THIS PRINT AND ITS COPYRIGHT ARE THE PROPERTY | | Size : | |
| | | A3 | |



TOTAL FOC DISTANCE: 2,649 METERS

| LEGEND | |
|--------|-------------------------------|
| | 12C FOC |
| | 24C FOC |
| | 48C FOC |
| | 96C FOC |
| | 144C FOC |
| | Installed 1:4 splitter in FDC |
| | FDP with (1:8) splitter |
| | Closure |
| | New Manhole (PT) |
| | Installed Pole (7.5M) |
| | Installed Pole (9m) |
| | Installed Riser |
| | Suspension Big |
| | Suspension Small |
| | FDC |
| | New Manhole(JRC7) |
| | House Number |
| | Existing TNB Pole |
| | LOOP |
| | FDP Boundary |
| | Tension Small / Tension Big |
| | Existing Manhole |
| | Closure NO. |
| | FDP NO. |
| | FDC NO. |
| | MH NO. |
| | Existing TNB Pole NO. |
| | New Pole NO. |
| | SEE A-A in this page |
| | SEE SHEET XXXX |



PROJECT OWNER :

MAIN CONTRACTOR

PRIVASAT

SUB-CONTRACTOR :

PROJECT TITLE:

CONTRACT FOR THE PROVISION OF SUPPLY, INSTALLATION, AND COMMISSIONING OF FTTX NETWORK INFRASTRUCTURE - POP 2 PROJECT D-SIDE - ABC7043 - SJK (C) PADANG GRUS

DRAWING TITLE:

ABC7043 SJK (C) PADANG GRUS

PROJECT PHASE:

PROJECT PHASE

| | | | |
|---|--------------|------------|------------|
| Design By | ENGINEER | Date | DATE |
| Drawn By | CAD ENGINEER | Scale | NTS |
| Checked By | ENGINEER | Job Number | JOB/NUMBER |
| DRAWING NUMBER : | | Sheet : | |
| DRAWING/NUMBER | | 1/1 | |
| THIS PRINT AND ITS COPYRIGHT ARE THE PROPERTY | | | |
| Size : A3 | | | |