

TECHNICAL PROPOSAL

POP2 ABA9007 SEKOLAH KEBANGSAAN SAHOM (D-SIDE)

Company Name	:	WCWL COMMUNICATIONS SDN BHD
Company Address	:	127, Jalan PUJ 3/3, Taman Puncak Jalil 43300 Subang Jaya Selangor
Prepared By	:	Nur Syahidah Izzatie
Date	:	21/11/2024



POINT A

POINT B

Starting Point

Site / Boundary Name	:	SEKOLAH KEBANGSAAN SAHOM
Address	:	Jalan Chenderiang
District	:	Kampar
Postcode	:	31850
State	:	Perak
GPS Coordinate	:	4.369156, 101.226205
LRD	:	A

End Point

Site / Boundary Name	:	SEKOLAH KEBANGSAAN SAHOM
Address	:	Jalan Chenderiang
District	:	Kampar
Postcode	:	31850
State	:	Perak
GPS Coordinate	:	4.384746, 101.215720
LRD	:	B



PROJEK PENYEDIAAN DAN PENYELENGGARAAN POINT OF PRESENCE (POP) FASA 2: HAB INFRASTRUKTUR GENTIAN OPTIK BERHAMPIRAN DENGAN SEKOLAH, KAWASAN PERINDUSTRIAN, PREMIS KERAJAAN DAN KOMUNITI SEKITARNYA OLEH KEMENTERIAN KOMUNIKASI MALAYSIA - ZON UTARA (KKMM.400-11/17/132(1))



Work Summary

No	Proposed Distance and Method	Unit	Qty
1	Horizontal Directional Drilling (HDD)	m	60
2	Carriage Way Open trench (CW)	m	0
3	Grass Verge Open Trenching (GV)	m	0
4	Micro trenching (MT)	m	0
	Total		60

	Other Information	Unit	Qty
1	Proposed Manhole	EA	2
2	Proposed Pole	EA	119
3	Joint Closure	EA	9
4	Estimated time required for completion	days	30



PROJEK PENYEDIAAN DAN PENYELENGGARAAN POINT OF PRESENCE (POP) FASA 2: HAB INFRASTRUKTUR GENTIAN OPTIK BERHAMPIRAN DENGAN SEKOLAH, KAWASAN PERINDUSTRIAN, PREMIS KERAJAAN DAN KOMUNITI SEKITARNYA OLEH KEMENTERIAN KOMUNIKASI MALAYSIA - ZON UTARA (KKMM.400-11/17/132(1))



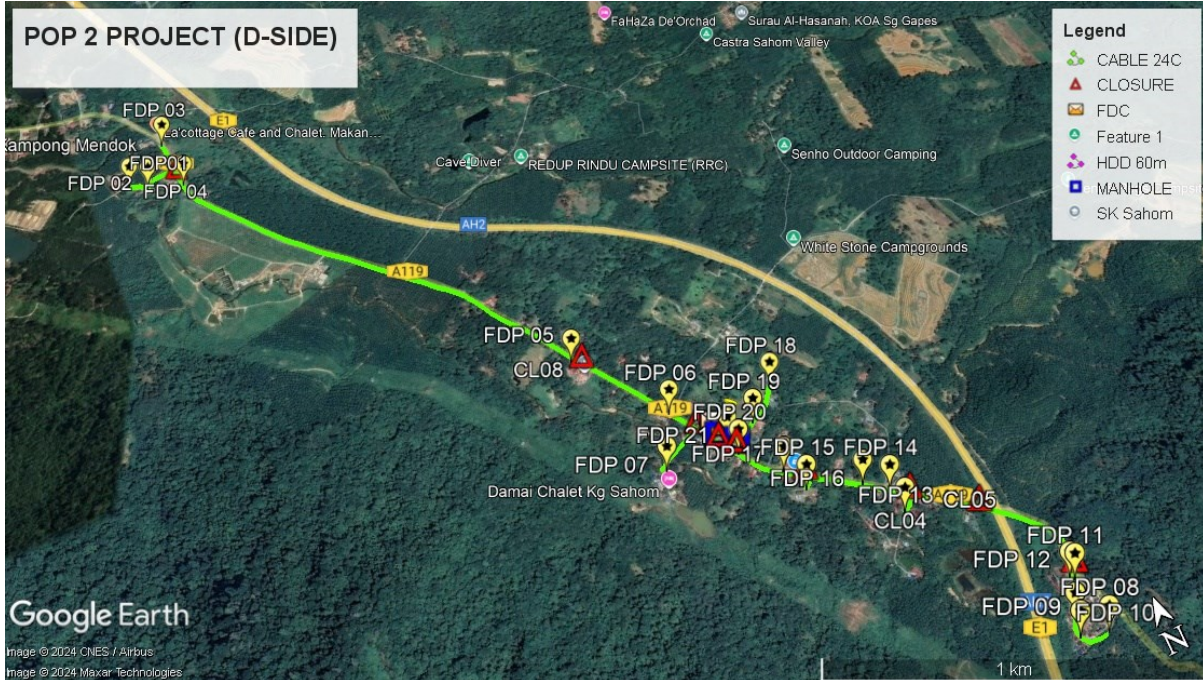
Local Authority Summary

1. Daerah Kampar

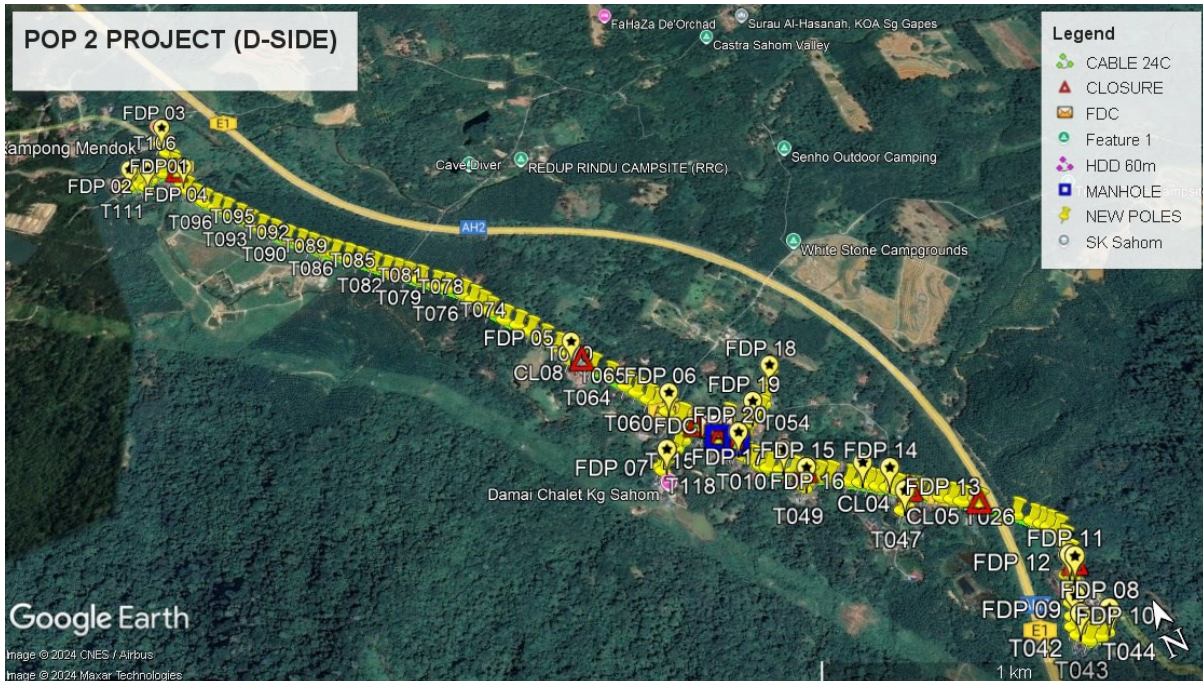
Bil	Items	Owner	Quantity	Distance(m)
1	HDD	JKR	1	60m
		Majlis	-	-
		Estate / Private Land	-	-
2	New Pole	JKR	87pcs	3283m
		Majlis	32pcs	1010m
		Estate / Private Land	-	-
3	Existing TNB Pole	JKR	-	-
		Majlis	-	-
		Estate / Private Land	-	-
Total				4353m

Site Plan – KMZ (Overview site area)

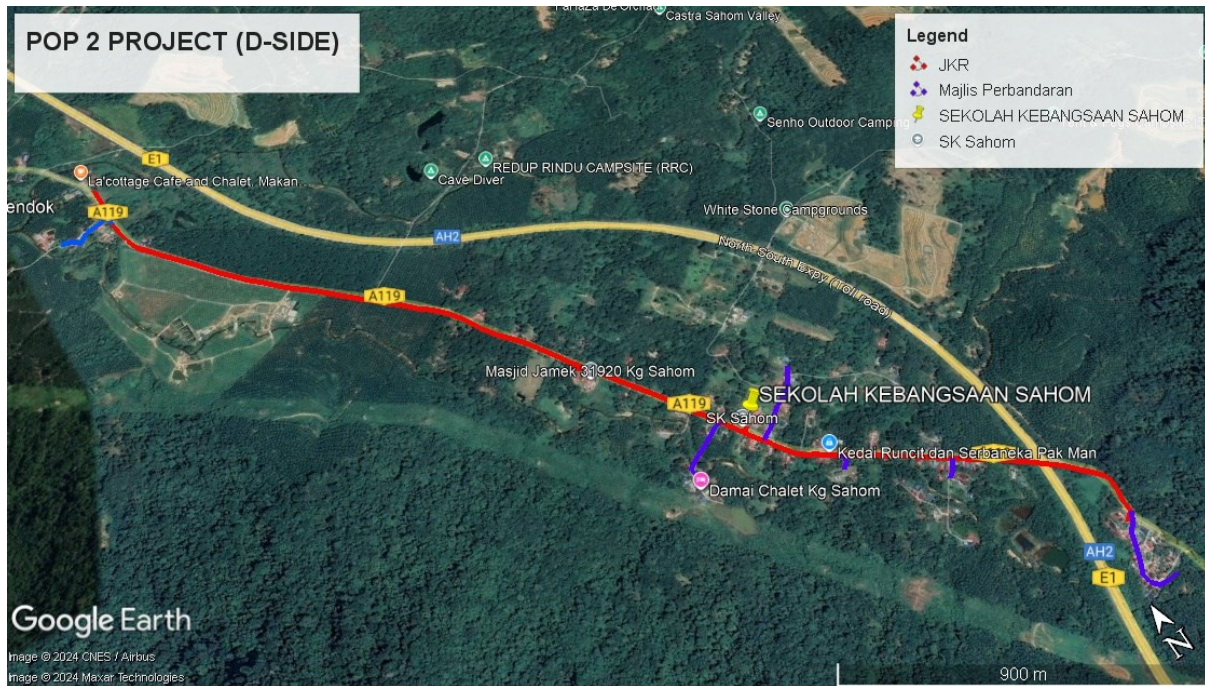
Proposed FDP and Closure



Proposed New Pole



Site Plan – KMZ Routing (All Local Authority)

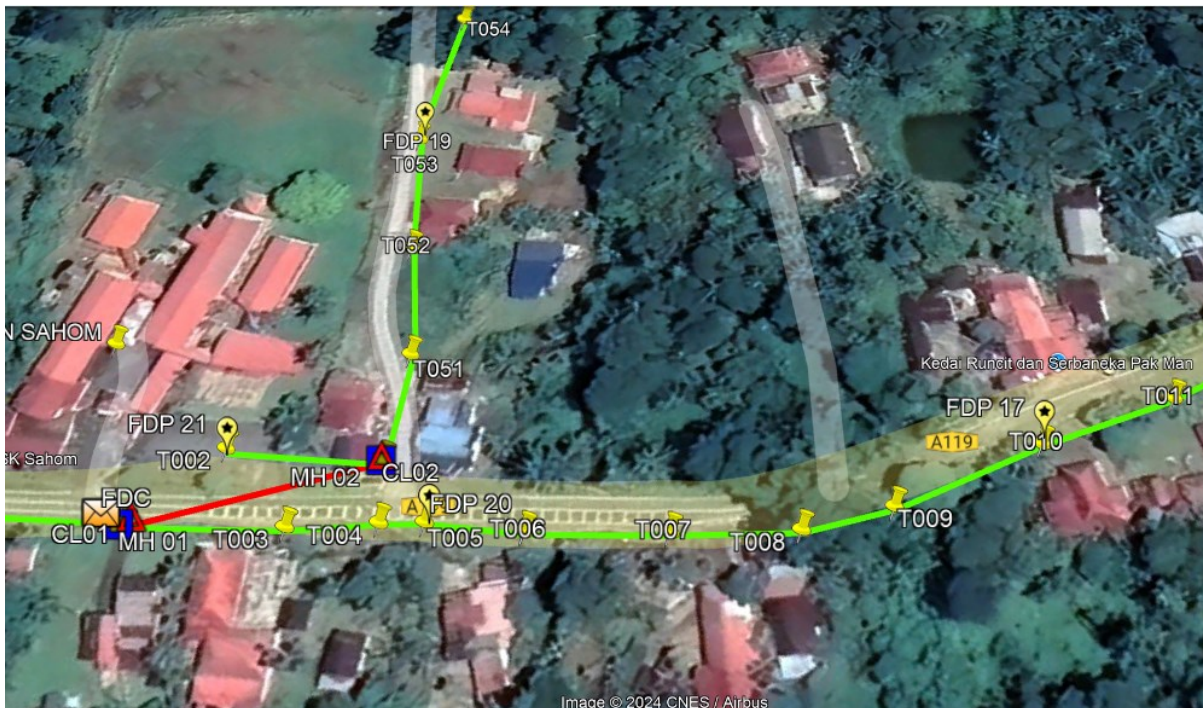
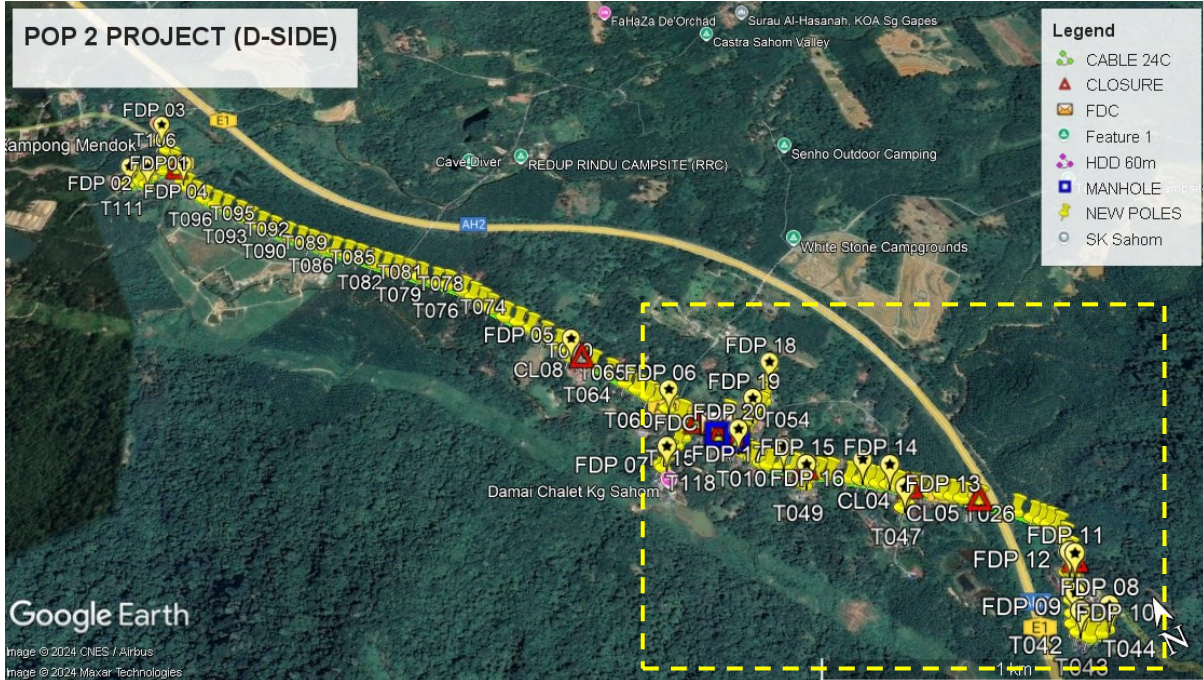


Red – JKR Kampar

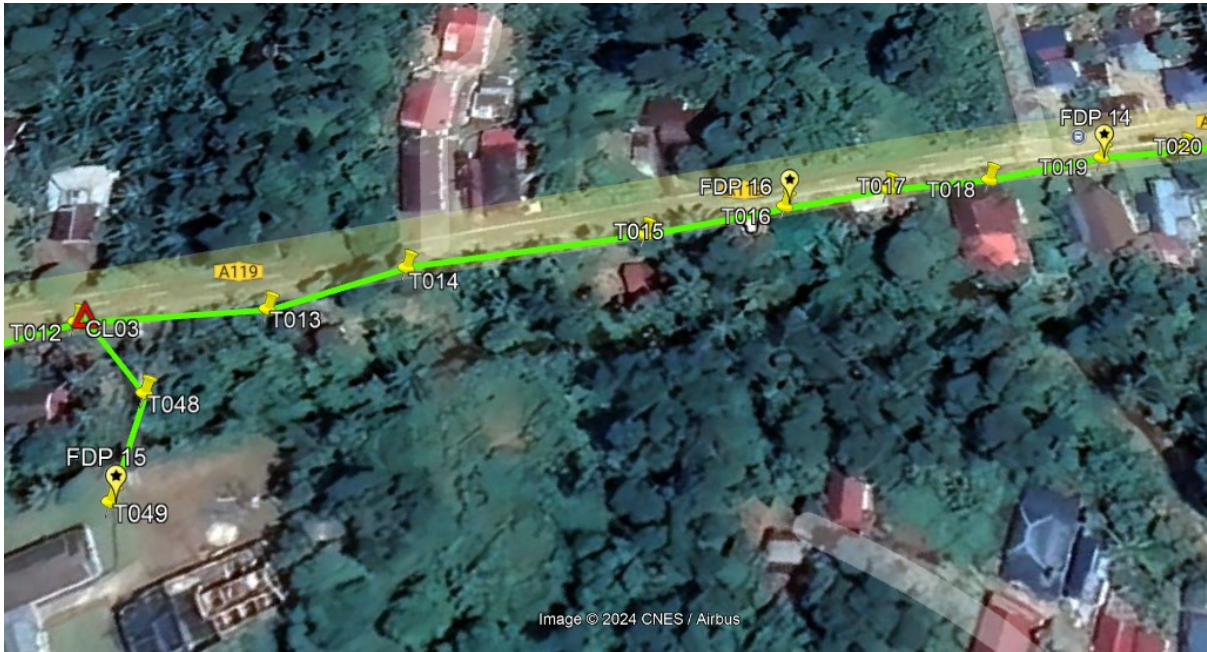
Blue - Majlis Perbandaran Kampar

Site Plan – KMZ Routing (All site area)

Route 1



Route 1.1



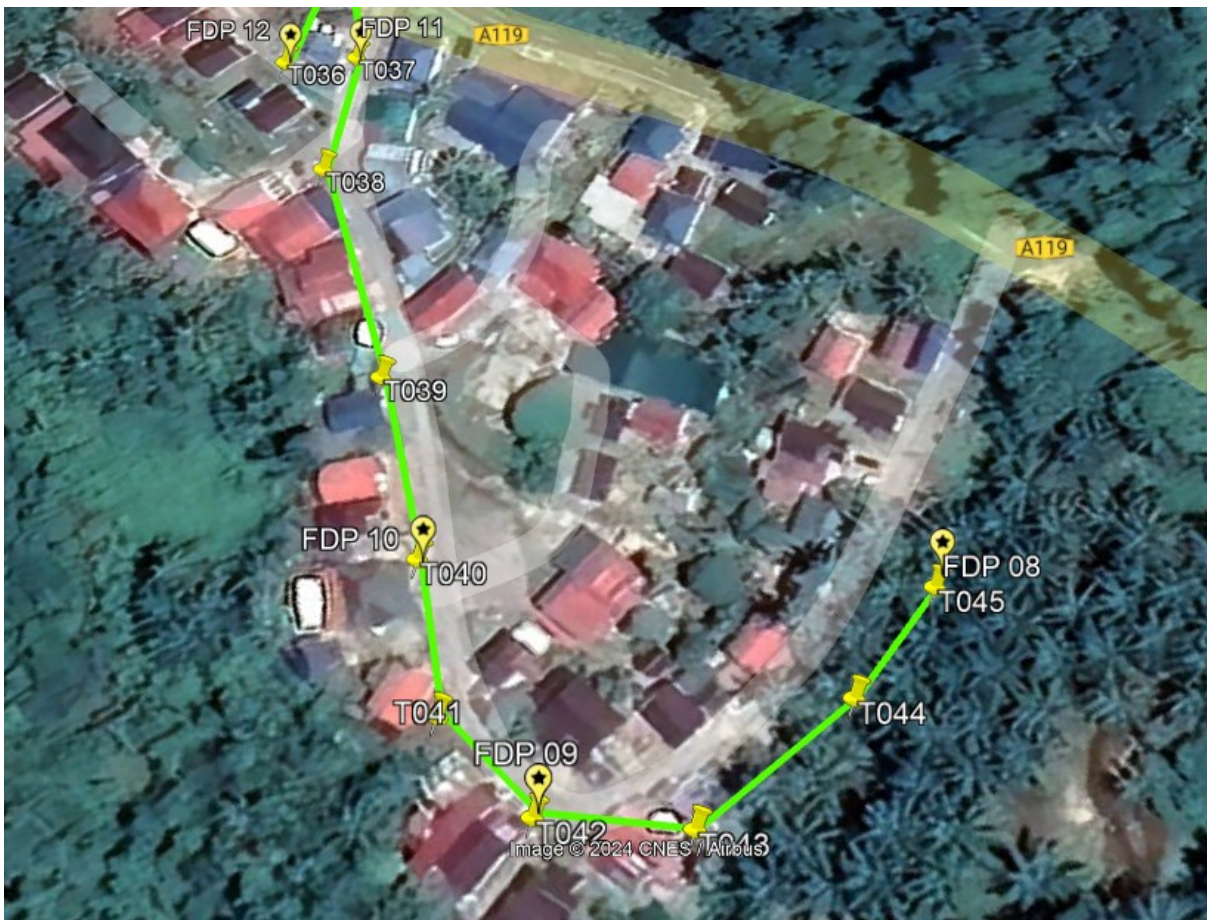
Route 1.2



Route 1.3

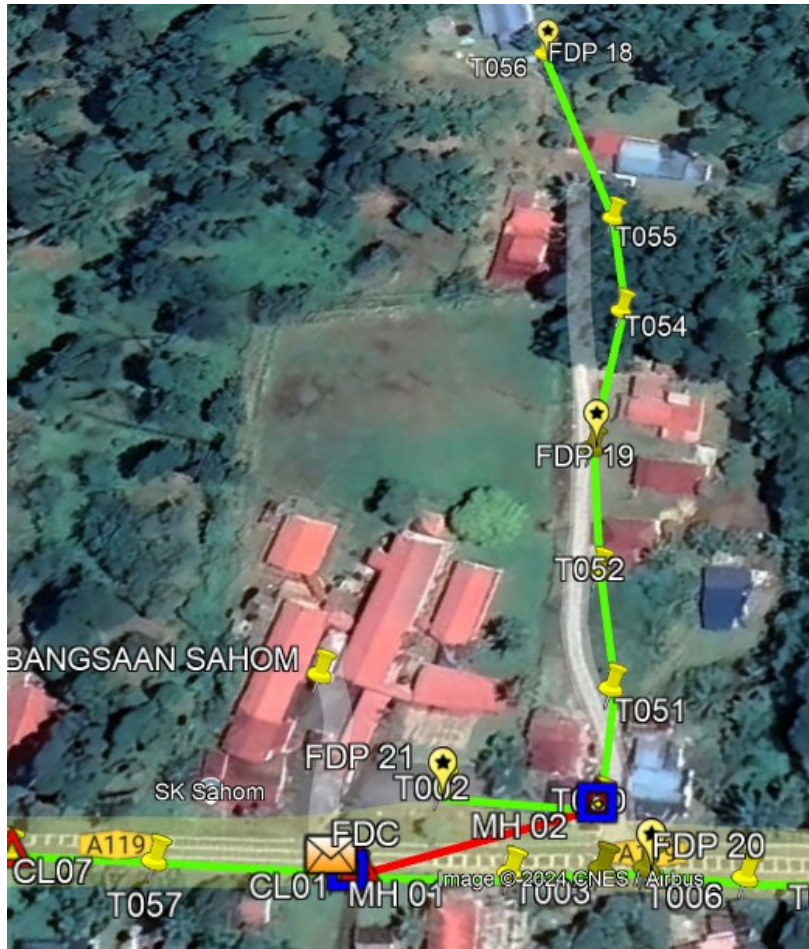
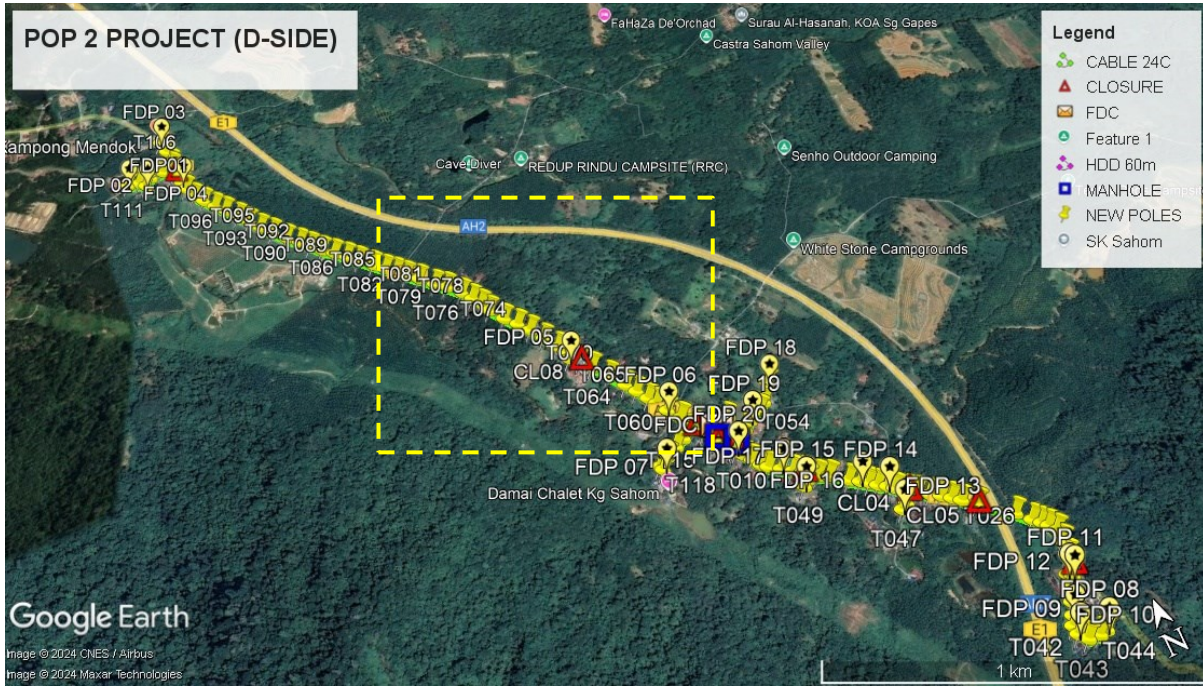


Route 1.4

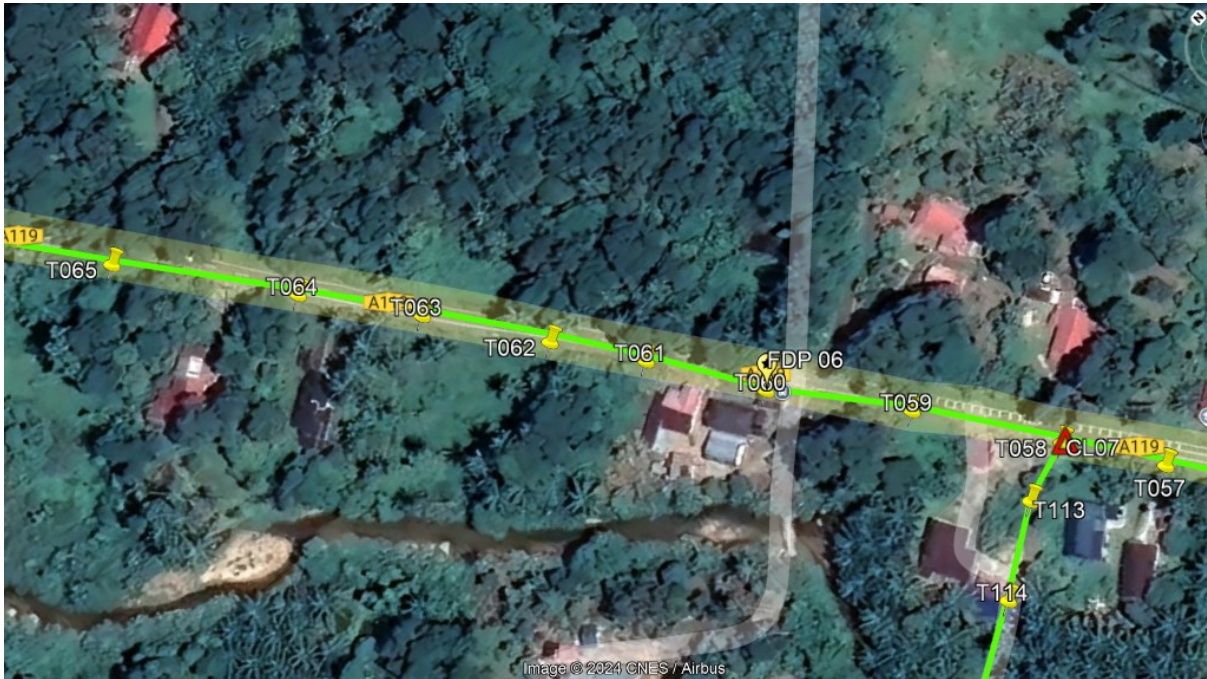


Route 1.5

Route 2



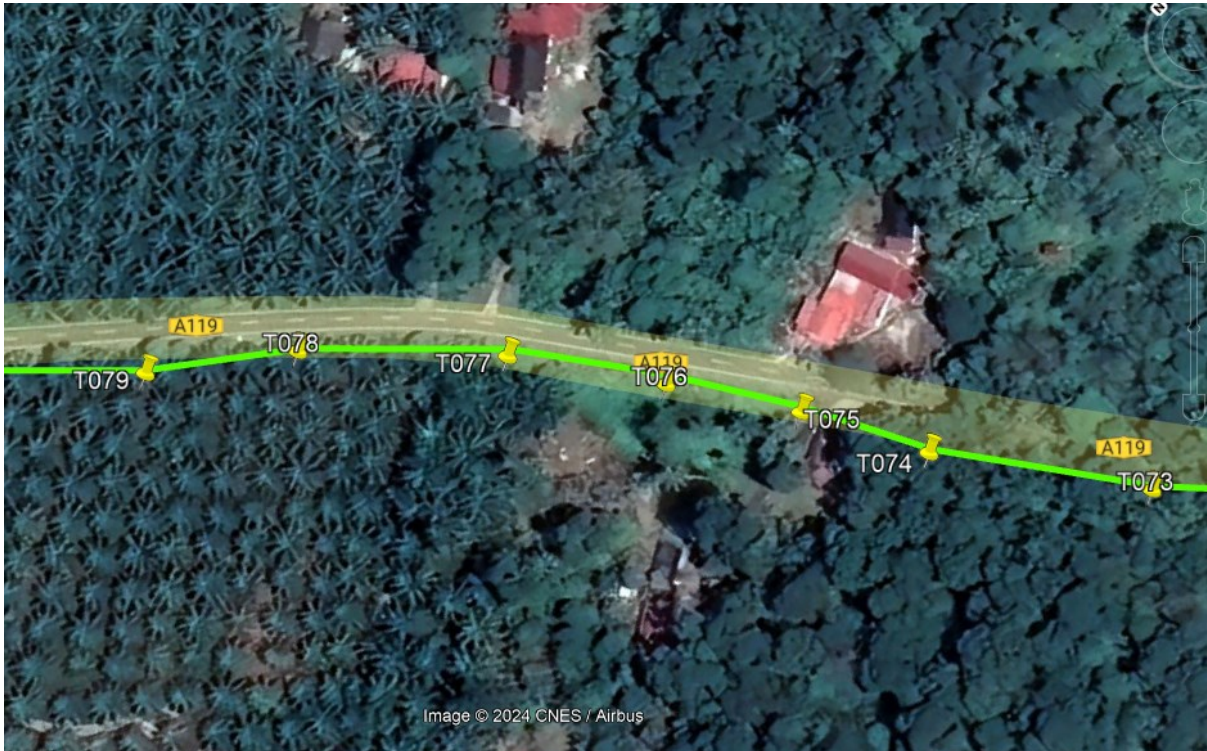
Route 2.1



Route 2.2

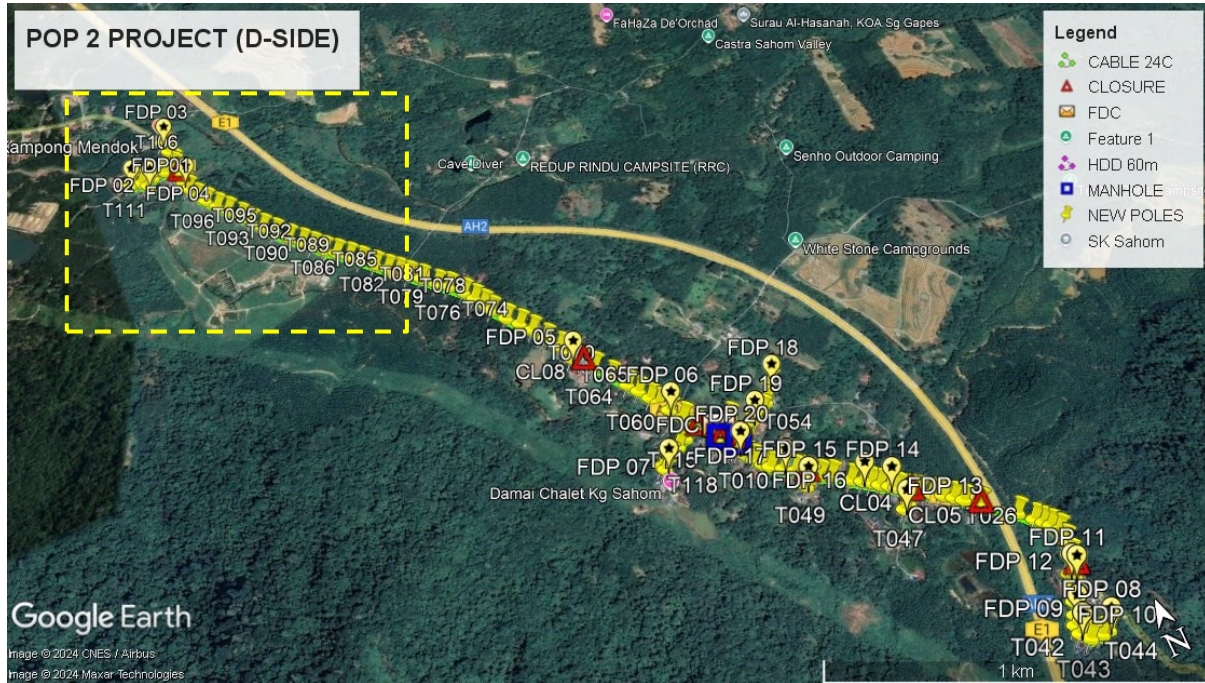


Route 2.3



Route 2.4

Route 3



Route 3.1



Route 3.2



Route 3.3



Route 3.4

Site Plan – KMZ Routing (Proposed New Manhole)

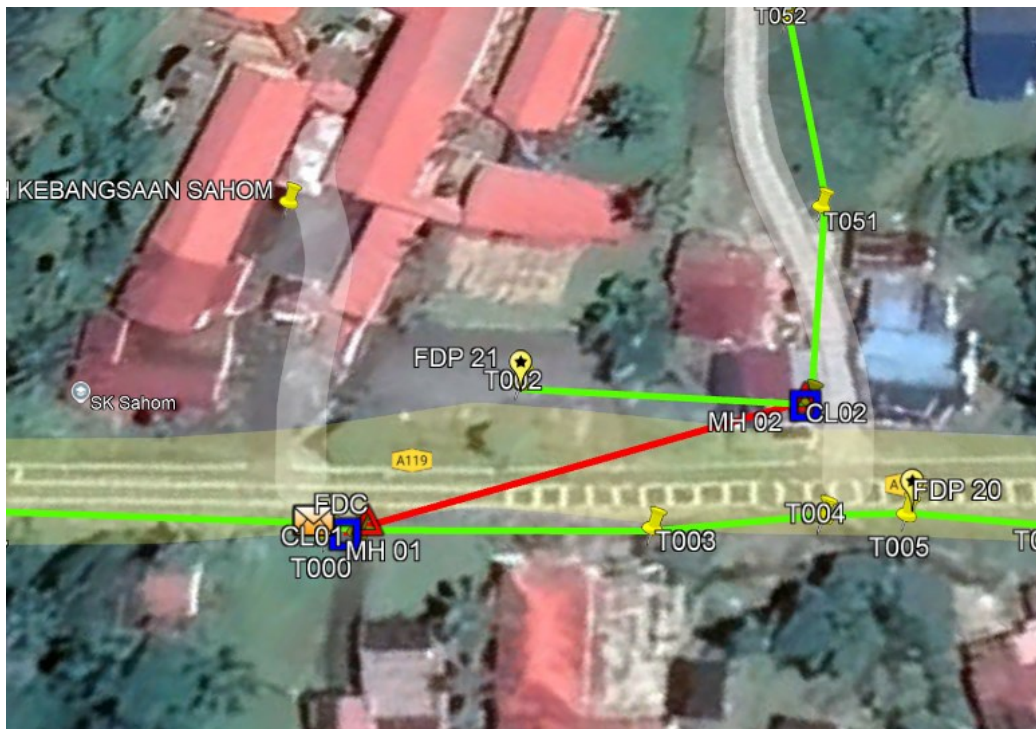
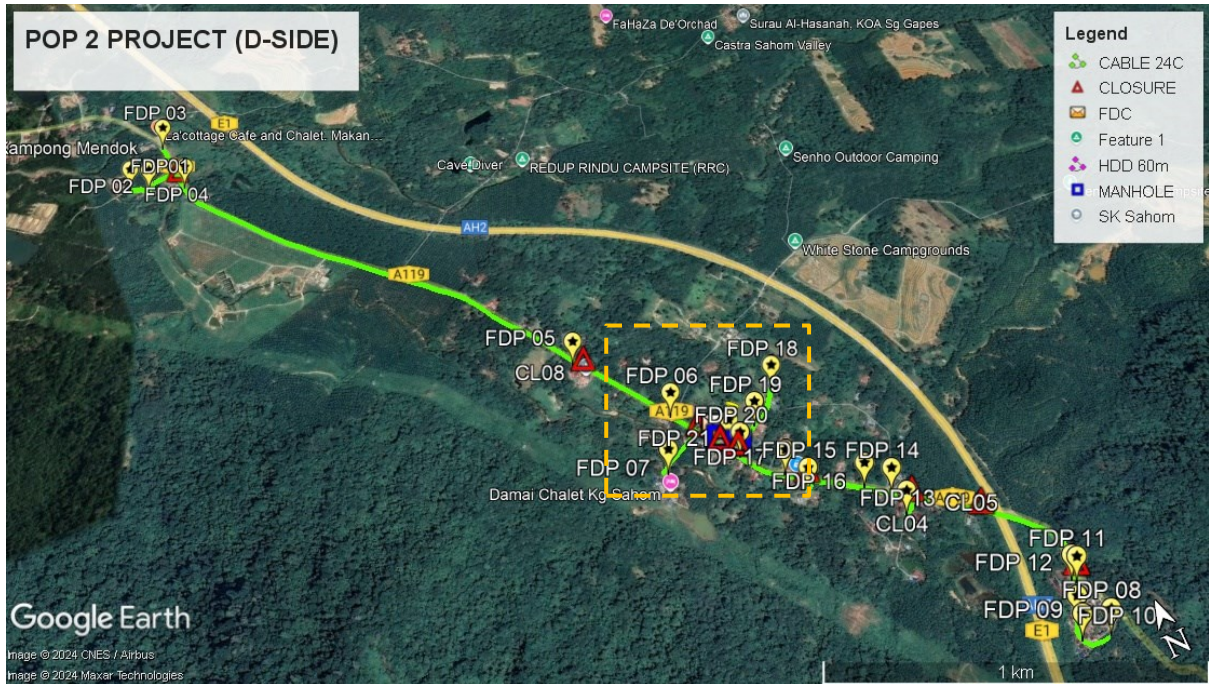


Figure 1: Manhole 1 (4.369129, 101.226223) & Manhole 2 (4.368791, 101.226599)

Site Plan – Google Map (routing plan, Manhole)



Proposed New Manhole Lat & Long Table

POLE NUMBER	PROPOSED MANHOLE COORDINATE	
	LATITUDE	LONGITUDE
MH01	4.369129	101.226599
MH02	4.368791	101.226223

Overall Pole (Proposed New)

No.	Pole & Manhole ID	Distance	Latitude	Longitude	Local Authority
1	T000	0.00	4.369143562	101.2262178	JKR Kampar
2	T001	3.37	4.369119235	101.2262358	JKR Kampar
3	T002	19.15	4.369247982	101.2263499	JKR Kampar
4	T003	43.54	4.368860085	101.2264003	JKR Kampar
5	T004	19.86	4.368714655	101.2265037	JKR Kampar
6	T005	9.75	4.368641429	101.2265518	JKR Kampar
7	T006	21.47	4.368469898	101.22664	JKR Kampar
8	T007	30.93	4.368234727	101.226788	JKR Kampar
9	T008	27.99	4.368025971	101.2269281	JKR Kampar
10	T009	20.98	4.367898377	101.2270668	JKR Kampar
11	T010	37.08	4.367713909	101.2273441	JKR Kampar
12	T011	33.43	4.367531406	101.2275826	JKR Kampar
13	T012	28.89	4.367403303	101.2278083	JKR Kampar
14	T013	42.21	4.367148672	101.2280892	JKR Kampar
15	T014	31.88	4.367015727	101.2283429	JKR Kampar
16	T015	54.72	4.366715597	101.2287322	JKR Kampar
17	T016	33.30	4.366549513	101.228981	JKR Kampar
18	T017	24.65	4.36642019	101.2291608	JKR Kampar
19	T018	24.21	4.366278664	101.2293259	JKR Kampar
20	T019	27.83	4.366139102	101.2295333	JKR Kampar
21	T020	19.94	4.366023287	101.2296699	JKR Kampar
22	T021	37.69	4.365817493	101.2299387	JKR Kampar
23	T022	25.62	4.365686242	101.2301277	JKR Kampar
24	T023	33.73	4.365506963	101.230372	JKR Kampar
25	T024	32.13	4.365346092	101.2306116	JKR Kampar
26	T025	29.79	4.365182441	101.2308233	JKR Kampar
27	T026	26.98	4.365028155	101.2310102	JKR Kampar
28	T027	43.44	4.364790151	101.2313194	JKR Kampar
29	T028	104.80	4.36417432	101.2320315	JKR Kampar
30	T029	47.68	4.363849188	101.2323103	JKR Kampar
31	T030	25.84	4.363680984	101.2324703	JKR Kampar
32	T031	19.86	4.363544432	101.2325851	JKR Kampar
33	T032	24.03	4.363361958	101.2327004	JKR Kampar
34	T033	31.80	4.363080139	101.2326537	JKR Kampar
35	T034	38.73	4.362749779	101.2325445	JKR Kampar
36	T035	28.73	4.362493032	101.2325181	JKR Kampar
37	T036	33.77	4.362352973	101.232249	Majlis Perbandaran Kampar
38	T037	14.29	4.362267594	101.2323448	Majlis Perbandaran Kampar
39	T038	27.10	4.362131848	101.2321427	Majlis Perbandaran Kampar
40	T039	47.13	4.361761367	101.2319378	Majlis Perbandaran Kampar



PROJEK PENYEDIAAN DAN PENYELENGGARAAN POINT OF PRESENCE (POP) FASA 2: HAB INFRASTRUKTUR GENTIAN OPTIK BERHAMPIRAN DENGAN SEKOLAH, KAWASAN PERINDUSTRIAN, PREMIS KERAJAAN DAN KOMUNITI SEKITARNYA OLEH KEMENTERIAN KOMUNIKASI MALAYSIA - ZON UTARA (KKMM.400-11/17/132(1))



41	T040	36.07	4.361488811	101.2317625	Majlis Perbandaran Kampar
42	T041	27.74	4.361289069	101.2316135	Majlis Perbandaran Kampar
43	T042	23.18	4.361080974	101.2316062	Majlis Perbandaran Kampar
44	T043	26.17	4.360899598	101.2317557	Majlis Perbandaran Kampar
45	T044	34.28	4.360857343	101.2320607	Majlis Perbandaran Kampar
46	T045	24.45	4.36087987	101.2322792	Majlis Perbandaran Kampar
47	T046	593.71	4.365563074	101.2297272	Majlis Perbandaran Kampar
48	T047	23.69	4.365466809	101.2295374	Majlis Perbandaran Kampar
49	T048	271.06	4.367183246	101.2278103	Majlis Perbandaran Kampar
50	T049	24.17	4.36705537	101.2276348	Majlis Perbandaran Kampar
51	T050	224.18	4.368790159	101.2266121	Majlis Perbandaran Kampar
52	T051	27.06	4.368895267	101.2268313	Majlis Perbandaran Kampar
53	T052	29.85	4.369059482	101.2270433	Majlis Perbandaran Kampar
54	T053	33.90	4.369232177	101.2272941	Majlis Perbandaran Kampar
55	T054	42.37	4.36937246	101.2276479	Majlis Perbandaran Kampar
56	T055	30.65	4.369534186	101.2278707	Majlis Perbandaran Kampar
57	T056	62.89	4.369968286	101.2282322	Majlis Perbandaran Kampar
58	T057	249.96	4.369459344	101.2260452	JKR Kampar
59	T058	32.29	4.369710941	101.2259008	JKR Kampar
60	T059	46.62	4.370072861	101.2256901	JKR Kampar
61	T060	44.92	4.370406306	101.2254629	JKR Kampar
62	T061	37.71	4.370704208	101.2253016	JKR Kampar
63	T062	29.90	4.37093459	101.2251635	JKR Kampar
64	T063	40.03	4.371244299	101.2249808	JKR Kampar
65	T064	38.52	4.371535615	101.224794	JKR Kampar
66	T065	57.93	4.371972153	101.2245108	JKR Kampar
67	T066	57.83	4.372403926	101.224222	JKR Kampar
68	T067	41.06	4.37270876	101.2240144	JKR Kampar
69	T068	52.19	4.373107149	101.2237672	JKR Kampar
70	T069	28.88	4.373339487	101.2236518	JKR Kampar
71	T070	52.61	4.373745837	101.2234104	JKR Kampar



PROJEK PENYEDIAAN DAN PENYELENGGARAAN POINT OF PRESENCE (POP) FASA 2: HAB INFRASTRUKTUR GENTIAN OPTIK BERHAMPIRAN DENGAN SEKOLAH, KAWASAN PERINDUSTRIAN, PREMIS KERAJAAN DAN KOMUNITI SEKITARNYA OLEH KEMENTERIAN KOMUNIKASI MALAYSIA - ZON UTARA (KKMM.400-11/17/132(1))



72	T071	50.51	4.374138288	101.2231827	JKR Kampar
73	T072	43.92	4.37445688	101.22295	JKR Kampar
74	T073	45.80	4.374771177	101.2226845	JKR Kampar
75	T074	55.63	4.375191455	101.2224142	JKR Kampar
76	T075	33.06	4.375461685	101.2222911	JKR Kampar
77	T076	34.25	4.37572684	101.2221351	JKR Kampar
78	T077	40.12	4.376032299	101.2219438	JKR Kampar
79	T078	52.45	4.376388814	101.2216358	JKR Kampar
80	T079	38.32	4.376607607	101.22137	JKR Kampar
81	T080	54.65	4.37696641	101.2210349	JKR Kampar
82	T081	43.30	4.377225535	101.2207448	JKR Kampar
83	T082	34.23	4.37744957	101.2205342	JKR Kampar
84	T083	36.23	4.37767106	101.2202957	JKR Kampar
85	T084	42.42	4.377941272	101.220027	JKR Kampar
86	T085	50.64	4.378264338	101.2197068	JKR Kampar
87	T086	40.55	4.37852489	101.2194523	JKR Kampar
88	T087	42.48	4.378783207	101.2191714	JKR Kampar
89	T088	42.07	4.379034516	101.2188891	JKR Kampar
90	T089	41.49	4.379307534	101.2186354	JKR Kampar
91	T090	38.06	4.379556358	101.2184009	JKR Kampar
92	T091	47.03	4.379858566	101.2181057	JKR Kampar
93	T092	52.10	4.380218236	101.2178063	JKR Kampar
94	T093	45.37	4.380525246	101.2175382	JKR Kampar
95	T094	46.94	4.380872116	101.2172984	JKR Kampar
96	T095	41.51	4.381171224	101.2170757	JKR Kampar
97	T096	50.20	4.381528113	101.2168	JKR Kampar
98	T097	40.20	4.381802496	101.2165652	JKR Kampar
99	T098	44.97	4.382127516	101.2163253	JKR Kampar
100	T099	38.28	4.382397692	101.2161125	JKR Kampar
101	T100	45.43	4.382779861	101.2159693	JKR Kampar
102	T101	30.26	4.38304573	101.2159129	JKR Kampar
103	T102	50.09	4.383490289	101.2158436	JKR Kampar
104	T103	31.25	4.38376928	101.2158126	JKR Kampar
105	T104	17.25	4.383885795	101.2159148	JKR Kampar
106	T105	48.89	4.384322726	101.2158708	JKR Kampar
107	T106	51.41	4.384781876	101.2158208	JKR Kampar
108	T107	129.21	4.383668719	101.2154919	Majlis Perbandaran Kampar
109	T108	38.15	4.383616977	101.2151531	Majlis Perbandaran Kampar
110	T109	35.26	4.383384537	101.2149379	Majlis Perbandaran Kampar
111	T110	26.11	4.383556423	101.2147783	Majlis Perbandaran Kampar
112	T111	36.26	4.383638798	101.2144632	Majlis Perbandaran Kampar
113	T112	1583.97	4.372881358	101.2237767	JKR Kampar

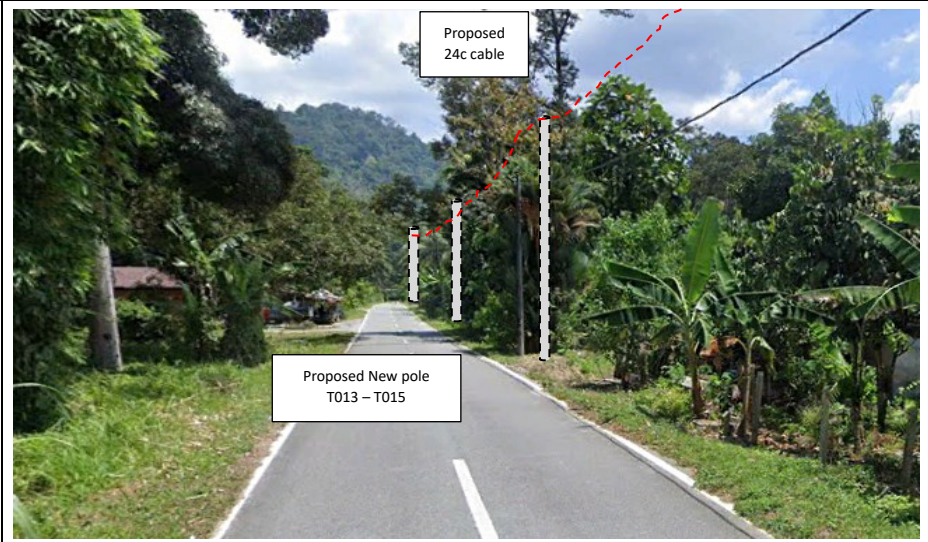
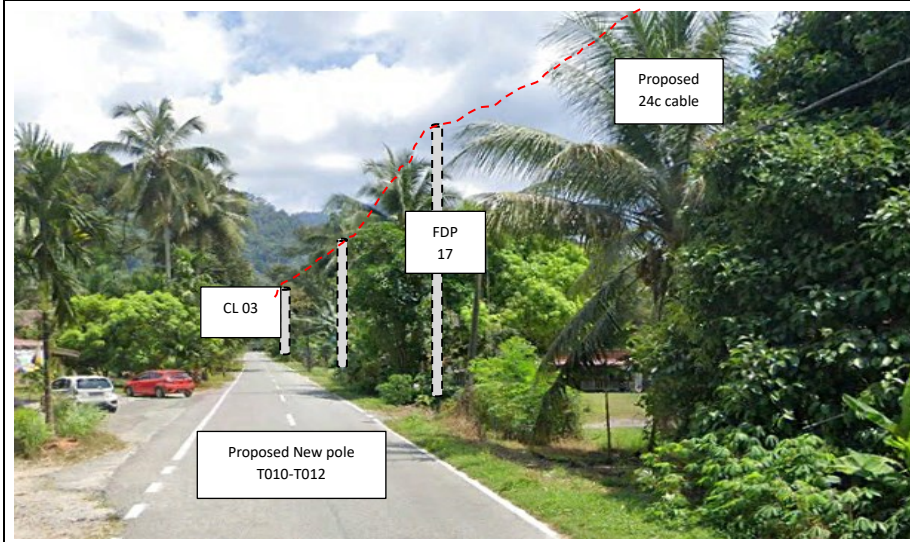
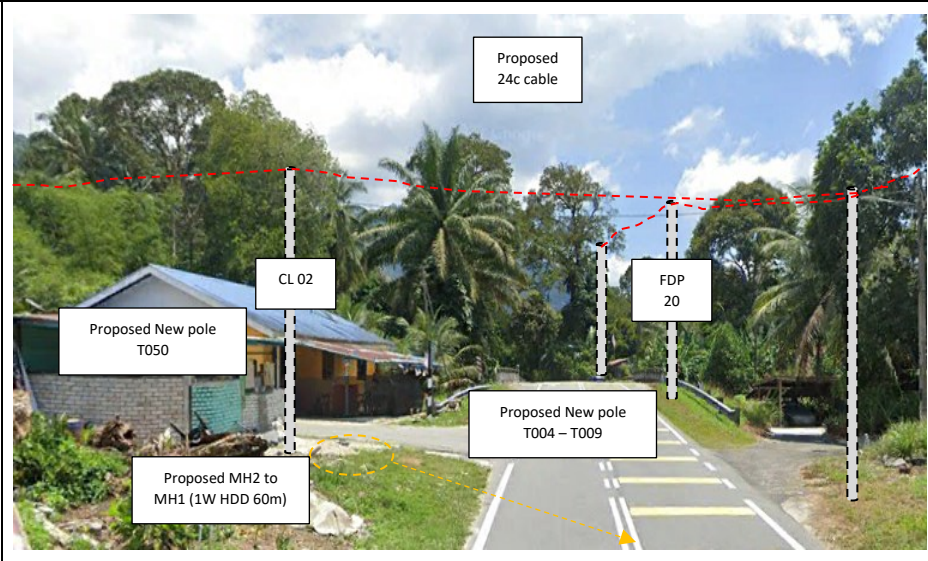
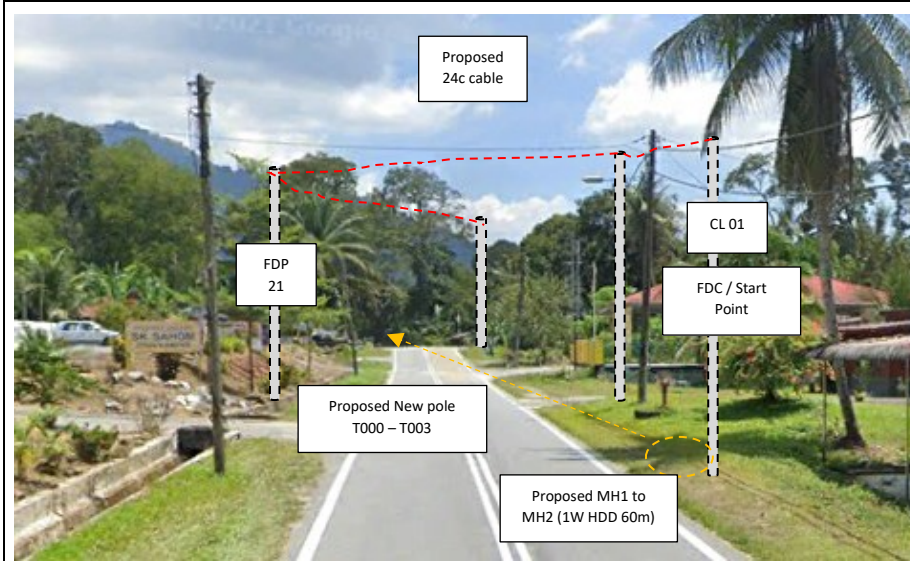


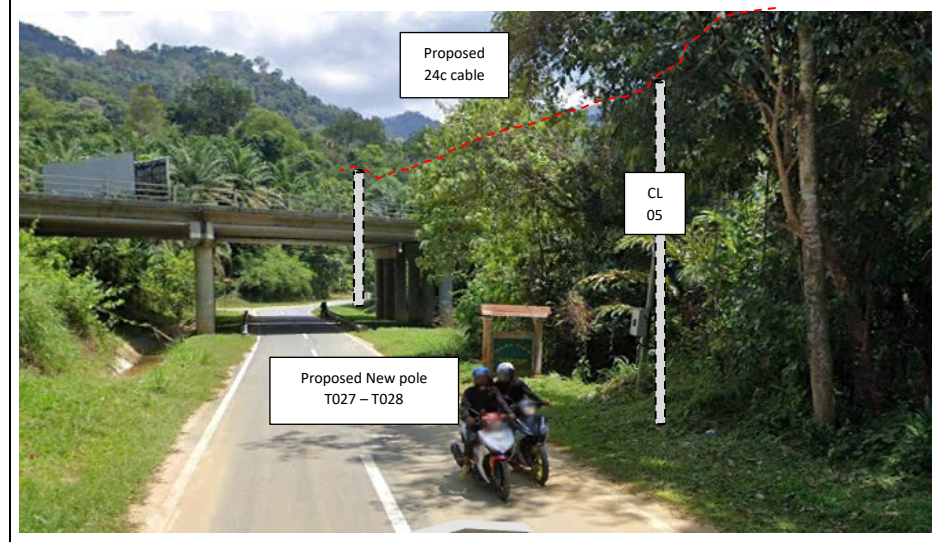
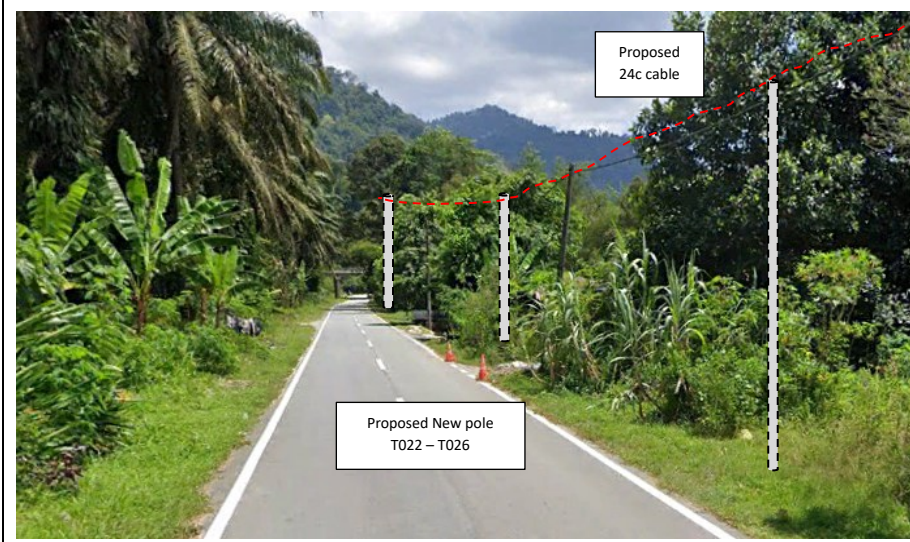
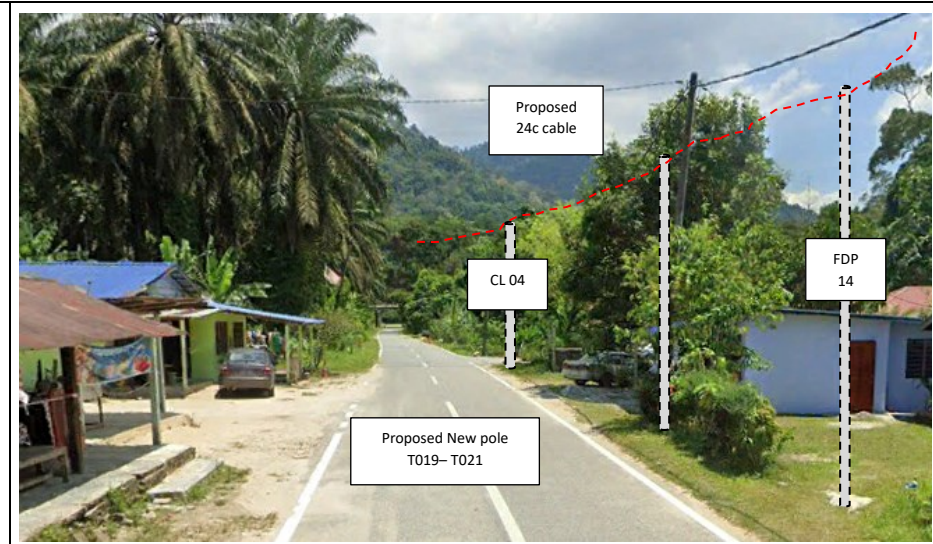
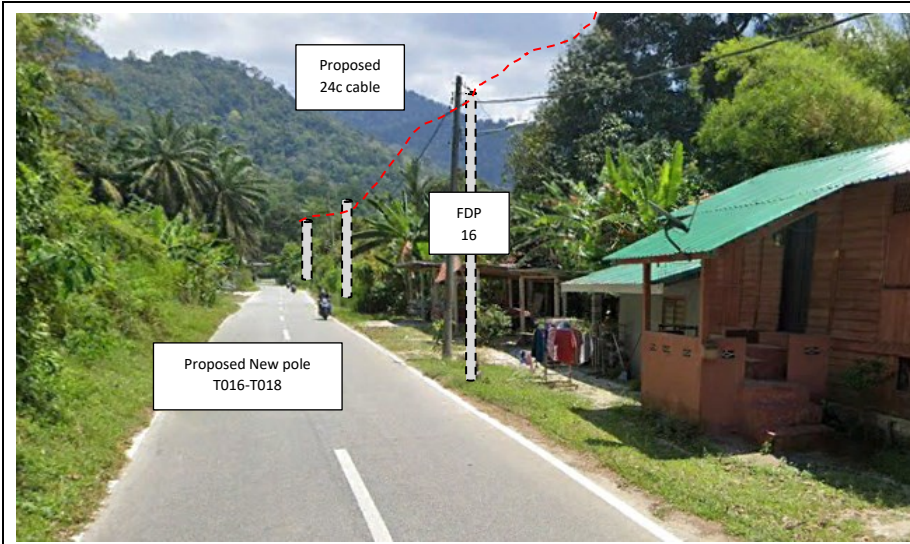
PROJEK PENYEDIAAN DAN PENYELENGGARAAN POINT OF PRESENCE (POP) FASA 2: HAB INFRASTRUKTUR GENTIAN OPTIK BERHAMPIRAN DENGAN SEKOLAH, KAWASAN PERINDUSTRIAN, PREMIS KERAJAAN DAN KOMUNITI SEKITARNYA OLEH KEMENTERIAN KOMUNIKASI MALAYSIA - ZON UTARA (KKMM.400-11/17/132(1))

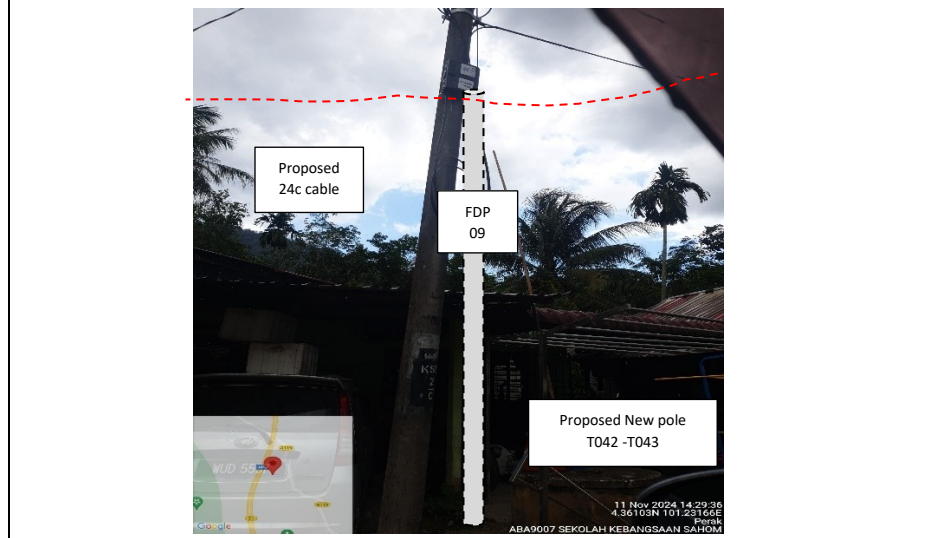
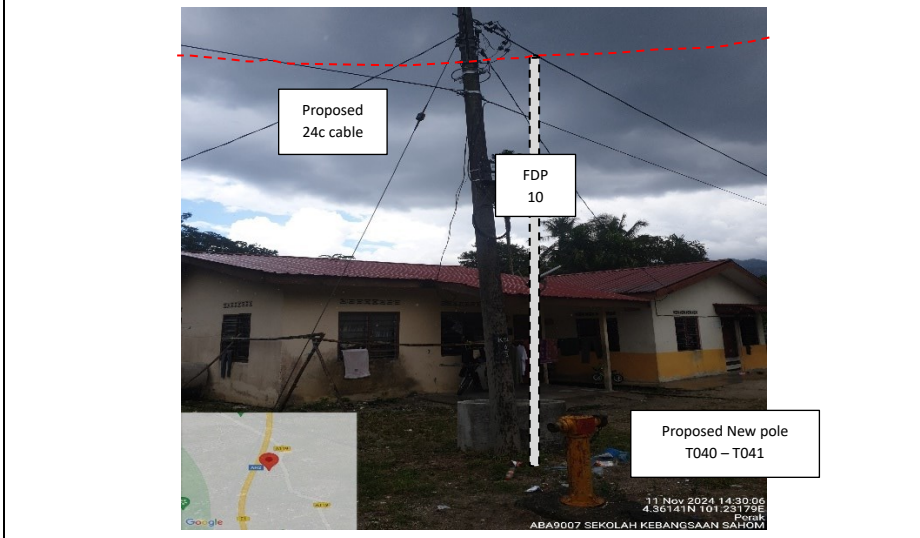
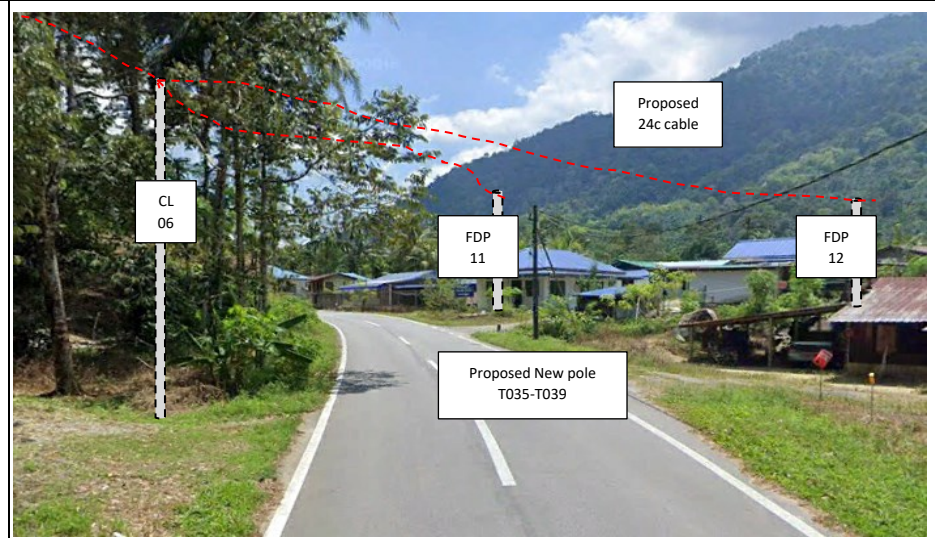


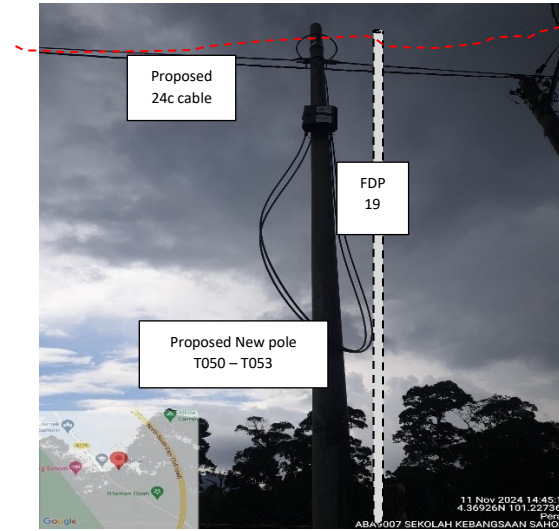
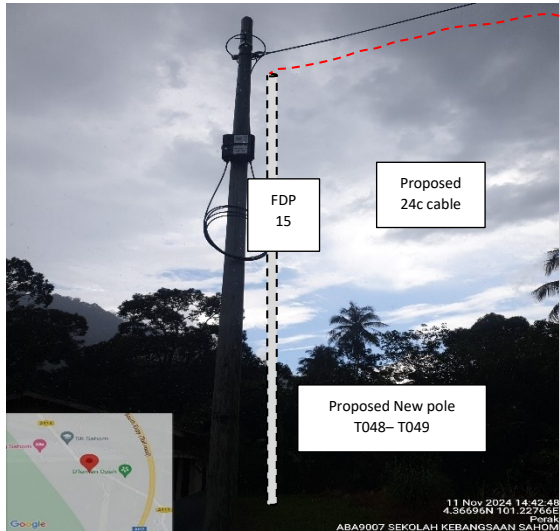
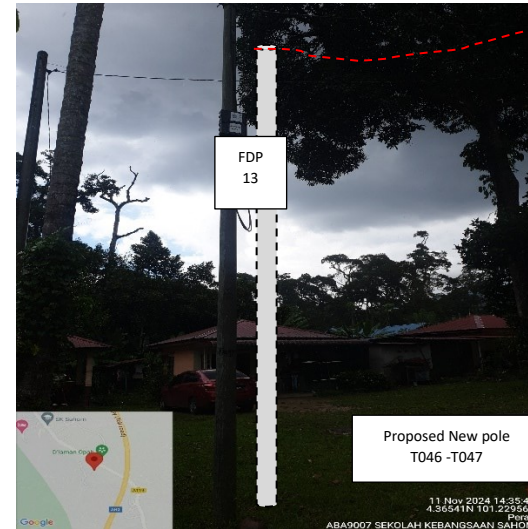
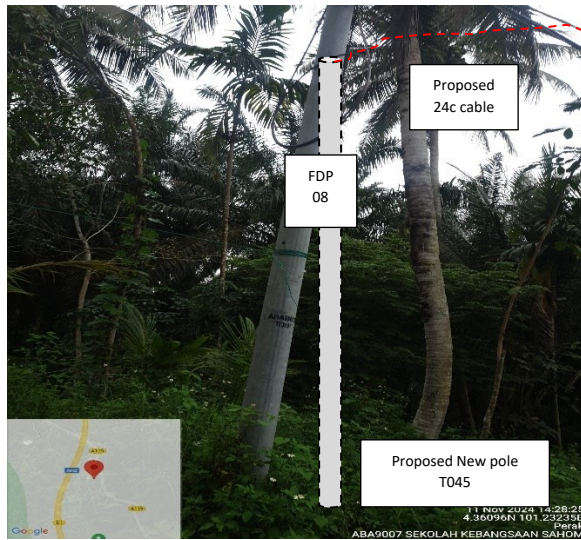
114	T113	418.17	4.369668949	101.2257238	Majlis Perbandaran Kampar
115	T114	30.94	4.369535998	101.2254797	Majlis Perbandaran Kampar
116	T115	33.21	4.369411746	101.2252085	Majlis Perbandaran Kampar
117	T116	41.55	4.369260665	101.2248672	Majlis Perbandaran Kampar
118	T117	35.69	4.369102394	101.2245884	Majlis Perbandaran Kampar
119	T118	13.34	4.368987086	101.2246211	Majlis Perbandaran Kampar

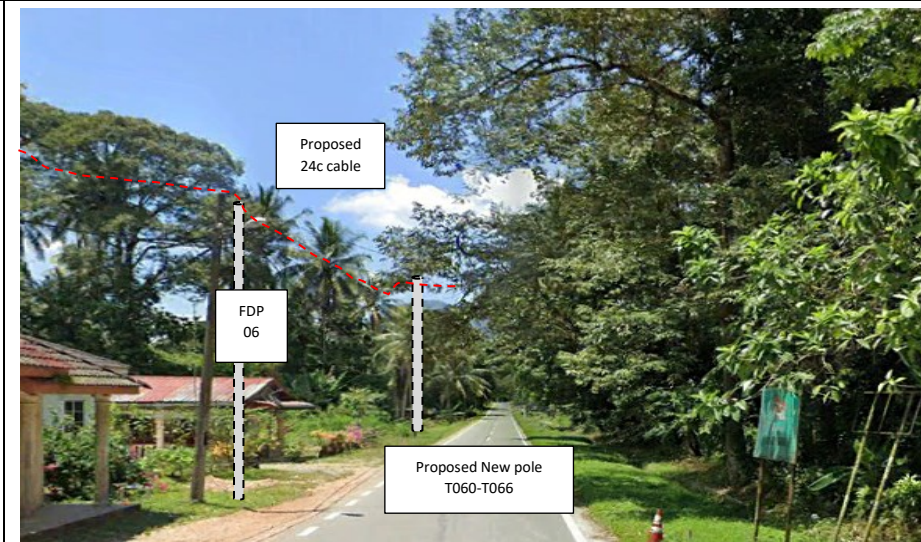
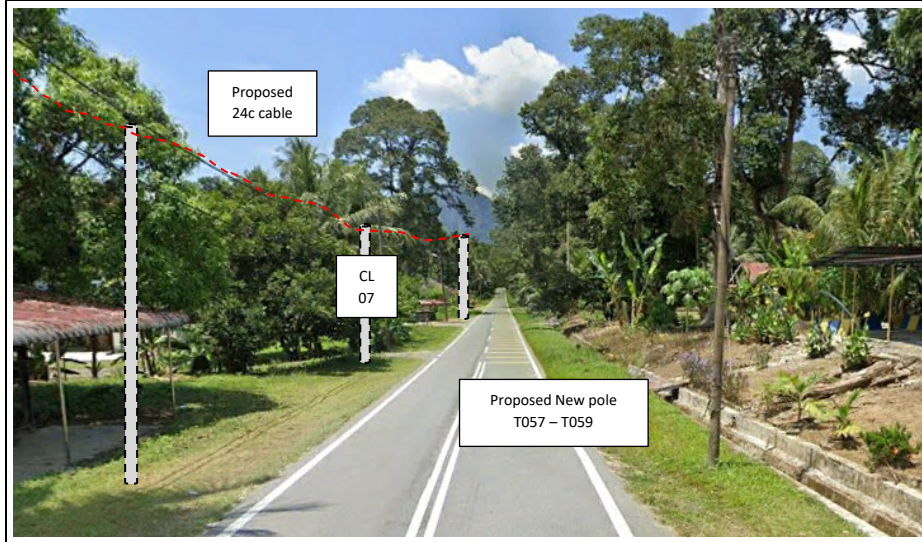
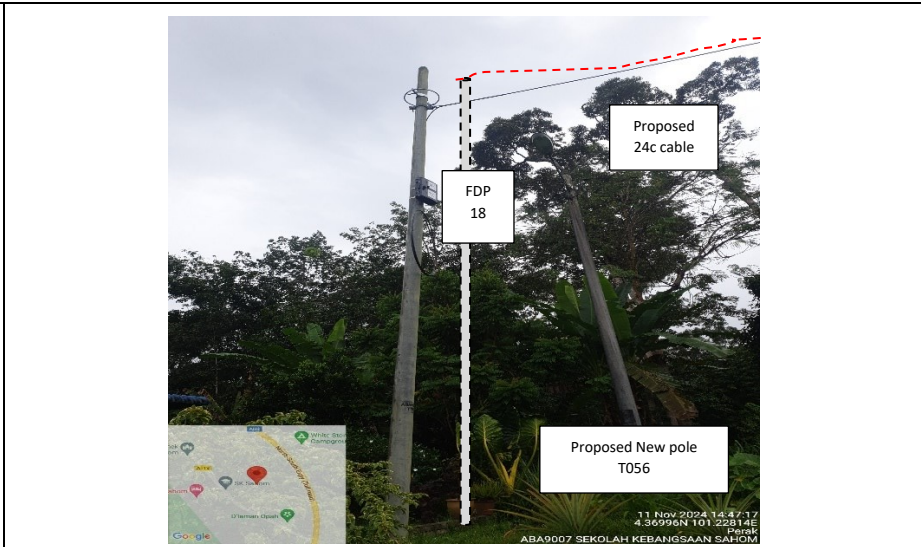
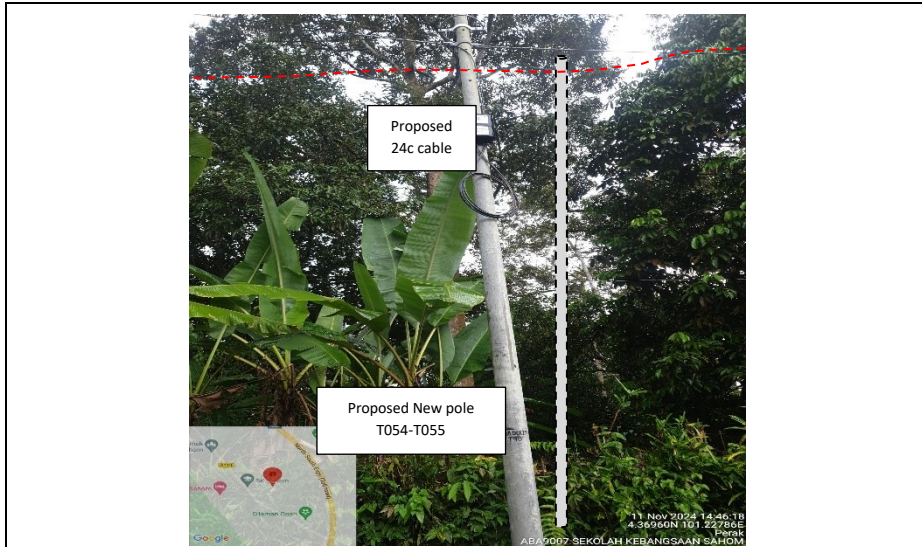
Site Photos – Proposed to install pole

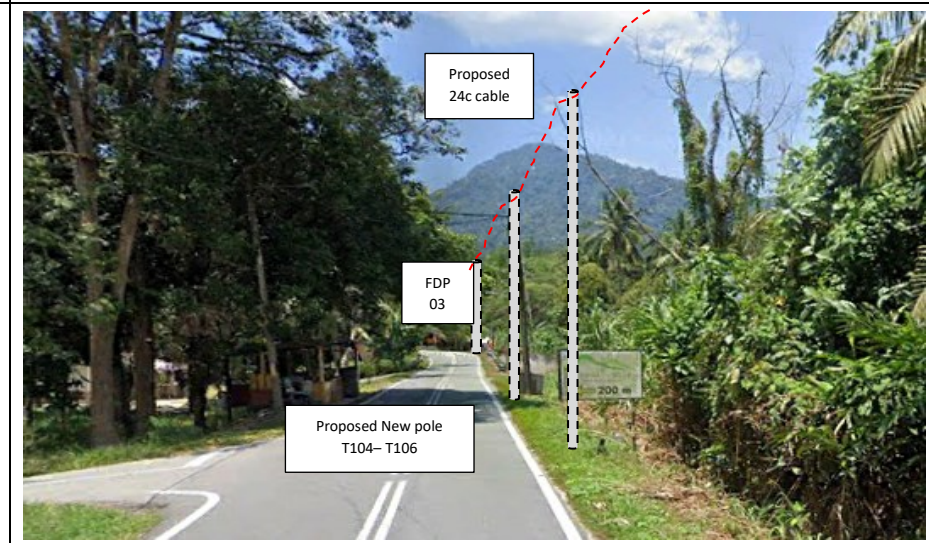
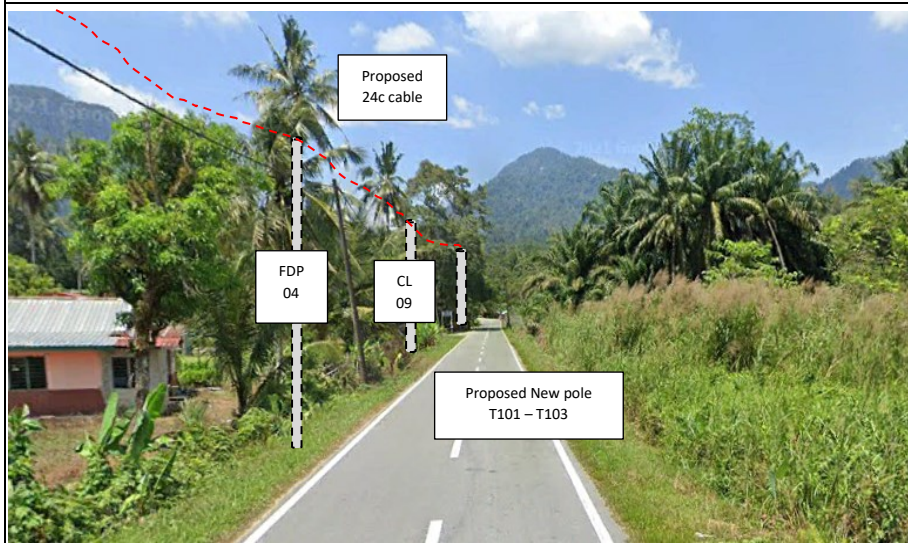
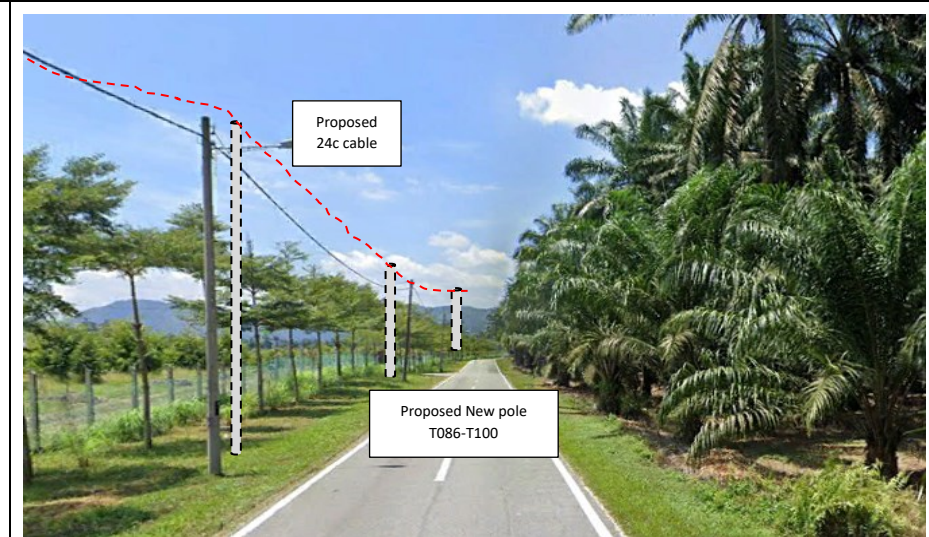
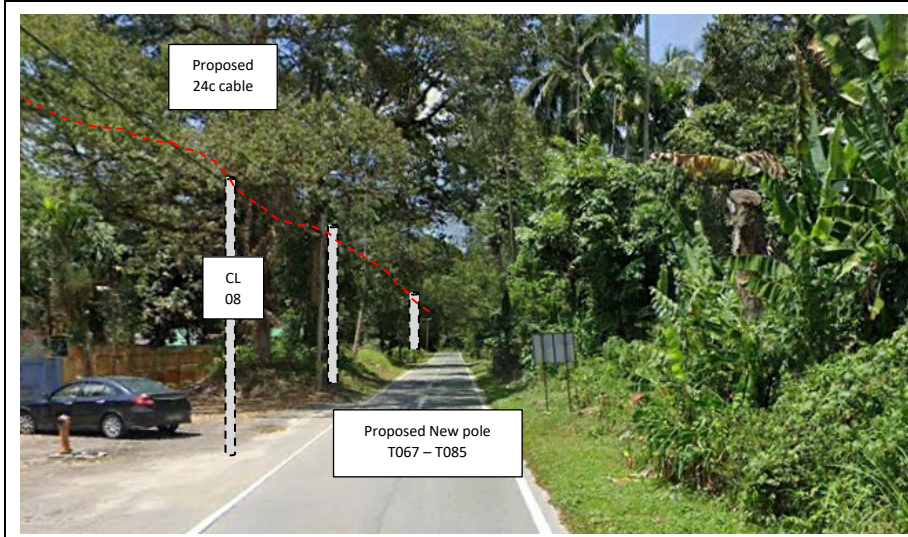


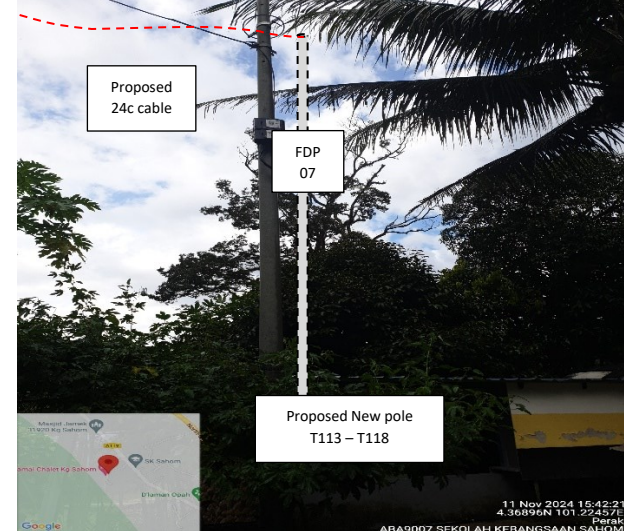
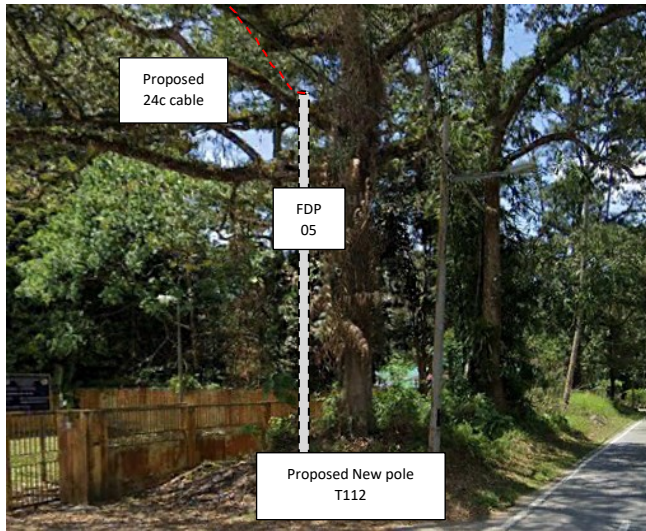
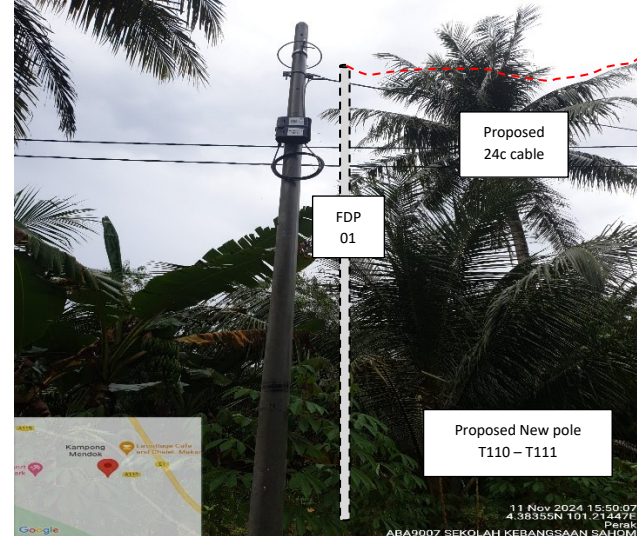
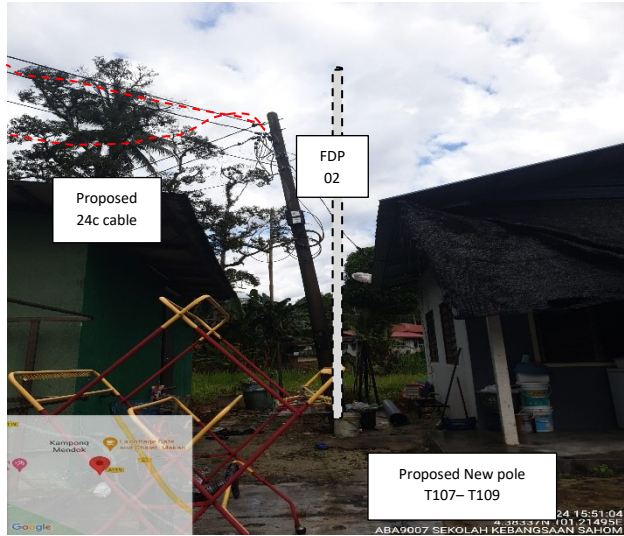














PROJEK PENYEDIAAN DAN PENYELENGGARAAN POINT OF PRESENCE (POP) FASA 2: HAB INFRASTRUKTUR GENTIAN OPTIK BERHAMPIRAN DENGAN SEKOLAH, KAWASAN PERINDUSTRIAN, PREMIS KERAJAAN DAN KOMUNITI SEKITARNYA OLEH KEMENTERIAN KOMUNIKASI MALAYSIA - ZON UTARA (KKMM.400-11/17/132(1))



3rd Parties Dependencies

No.	Local Council/ Authority	Remark
1	JKR Kampar	
2	Majlis Perbandaran Kampar	
3		
4		
5		
6		



LEGEND	NOS.	NOS.	NOS.	NOS.	NOS.	NOS.	NOS.	NOS.	NOS.				
12C FOC		Installed 1:4 / 1:8 / 1:32 splitter		Installed Pole (9m)		Suspension		New Manhole (PIT)		Micro-Trenching (Meter)		MH1	MH NO.
24C FOC	435	Installed Patch Cord		Installed Pole (7.5M)	118	Tension		New Manhole(JRC7)	2	Temporary Infra (Meter)		TKS-1	Existing TNB Pole NO.
48C FOC		FDC	1	Installed Pole (6.7M)		Pole Ring		FDP Boundary		Loop / Coil (Meter)		P001	New Pole NO.
96C FOC		Closure	9	Existing TNB Pole		FDP with (1:8) splitter	21	Existing Manhole		Active Outdoor Cabinet		CL01	Closure NO.
144C FOC		Existing Closure		Installed Riser		Existing Manhole				FDC NO.		DP1	FDP NO.

ACTUAL HOMEPASS :

KEY PLAN :

POP2 PROJECT IN PERAK

OWNER/DEVELOPER :



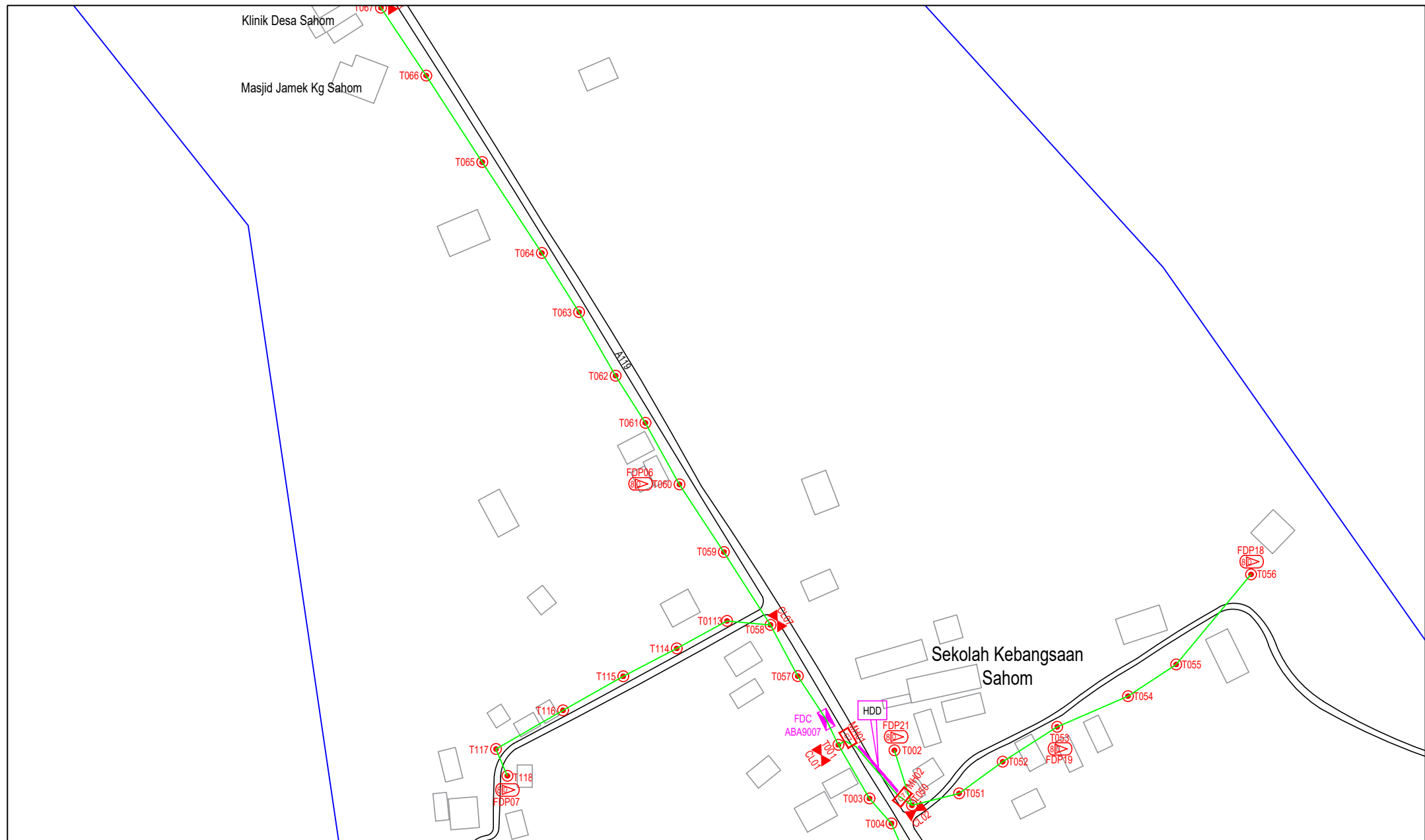
MAIN CONTRACTOR :

CONTRACTOR FOR SURVEY, TECHNICAL PROPOSAL AND WAYLEAVE, & PERMIT APPROVAL - POP2 PROJECT

DRAWING TITLE:
AS-BUILT SITE PLAN DRAWING ABA9007 SEKOLAH KEBANGSAAN SAHOM

PROJECT PHASE:
POP 2

Design By : ENGINEER	Date : NOV 2024
Drawn By : CAD ENGINEER	Scale : NOT TO SCALE
Checked By : ENGINEER	Job Number : 1
DRAWING NUMBER : ABA9007-ABD-01	Sheet : 1/7
THIS PRINT AND ITS COPYRIGHT ARE THE PROPERTY OF APEX COMMUNICATIONS SDN BHD	
Size : A3	




LEGEND	NOS.	NOS.	NOS.	NOS.	NOS.	NOS.	NOS.	NOS.	NOS.
12C FOC		Installed 1:4 / 1:8 / 1:32 splitter		Installed Pole (9m)		Suspension		BS0	New Manhole (PIT)
24C FOC	435	Installed Patch Cord		Installed Pole (7.5M)	118	Tension		CS7	New Manhole(JRC7)
48C FOC		FDC	1	Installed Pole (6.7M)		Pole Ring			FDP Boundary
96C FOC		Closure	9	Existing TNB Pole		FDP with (1:8) splitter	21		HDD (Meter)
144C FOC		Existing Closure		Installed Riser		Existing Manhole			Open Cut (Meter)
									Micro-Trenching (Meter)
									Temporary Infra (Meter)
									Loop / Coil (Meter)
									Active Outdoor Cabinet
									FDC NO.
									MH1 MH NO.
									TKS-1 Existing TNB Pole NO.
									P001 New Pole NO.
									CL01 Closure NO.
									DP1 FDP NO.

ACTUAL HOMEPASS :

KEY PLAN :

POP2 PROJECT IN PERAK

OWNER/DEVELOPER :



MAIN CONTRACTOR :



WCWL COMMUNICATIONS SDN BHD
127, JALAN PAU 3/3, TAMAN PUNCAK JAYA,
MUKAH, PUTRA PERANG,
43300 SERI KEMBANGAN, SELANGOR
TEL: +603 9383 9383
E-MAIL: info@wcwlcommunications.com.my

PROJECT TITLE :

CONTRACTOR FOR SURVEY, TECHNICAL PROPOSAL AND WAYLEAVE, & PERMIT APPROVAL - POP2 PROJECT

DRAWING TITLE:

AS-BUILT SITE PLAN DRAWING
ABA9007
SEKOLAH KEBANGSAAN SAHOM

PROJECT PHASE:
POP 2

Design By : ENGINEER
Date : NOV 2024

Drawn By : CAD ENGINEER
Scale : NOT TO SCALE

Checked By : ENGINEER
Job Number : 1

DRAWING NUMBER :
ABA9007-ABD-01A

Sheet :
2/7

THIS PRINT AND ITS COPYRIGHT ARE THE PROPERTY OF APEX COMMUNICATIONS SDN BHD

Size :
A3

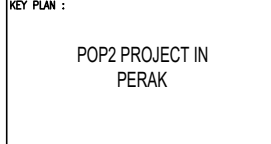


LEGEND	NOS.	NOS.	NOS.	NOS.	NOS.	NOS.	NOS.	NOS.	NOS.	NOS.
12C FOC		Installed 1:4 / 1:8 / 1:32 splitter		Installed Pole (9m)		Suspension		New Manhole (PIT)		Micro-Trenching (Meter)
24C FOC	435	Installed Patch Cord		Installed Pole (7.5M)	118	Tension		New Manhole(JRC7)	2	Temporary Infra (Meter)
48C FOC		FDC	1	Existing TNB Pole (6.7M)		Pole Ring		FDP Boundary		Loop / Coil (Meter)
96C FOC		Closure	9	Existing TNB Pole		FDP with (1:8) splitter	21	HDD (Meter)	60	Active Outdoor Cabinet
144C FOC		Existing Closure		Installed Riser		Existing Manhole		Open Cut (Meter)		FDC NO.
										MHI MH NO.
										TKS-1 Existing TNB Pole NO.
										P001 New Pole NO.
										CL01 Closure NO.
										DP1 FDP NO.

ACTUAL HOMEPASS :

KEY PLAN :

POP2 PROJECT IN PERAK



OWNER/DEVELOPER :

WCWL COMMUNICATIONS SDN BHD

127, JALAN PAU 3/3, TAMAN PUNCAK JAYA, BANGSAR UTAMA, PERAK, 43300 SERI KEMBANGAN, SELANGOR
TEL: +603 9088 9993
E-MAIL: info@wcwlcommunications.com.my

MAIN CONTRACTOR :

CONTRACTOR FOR SURVEY, TECHNICAL PROPOSAL AND WAYLEAVE, & PERMIT APPROVAL - POP2 PROJECT

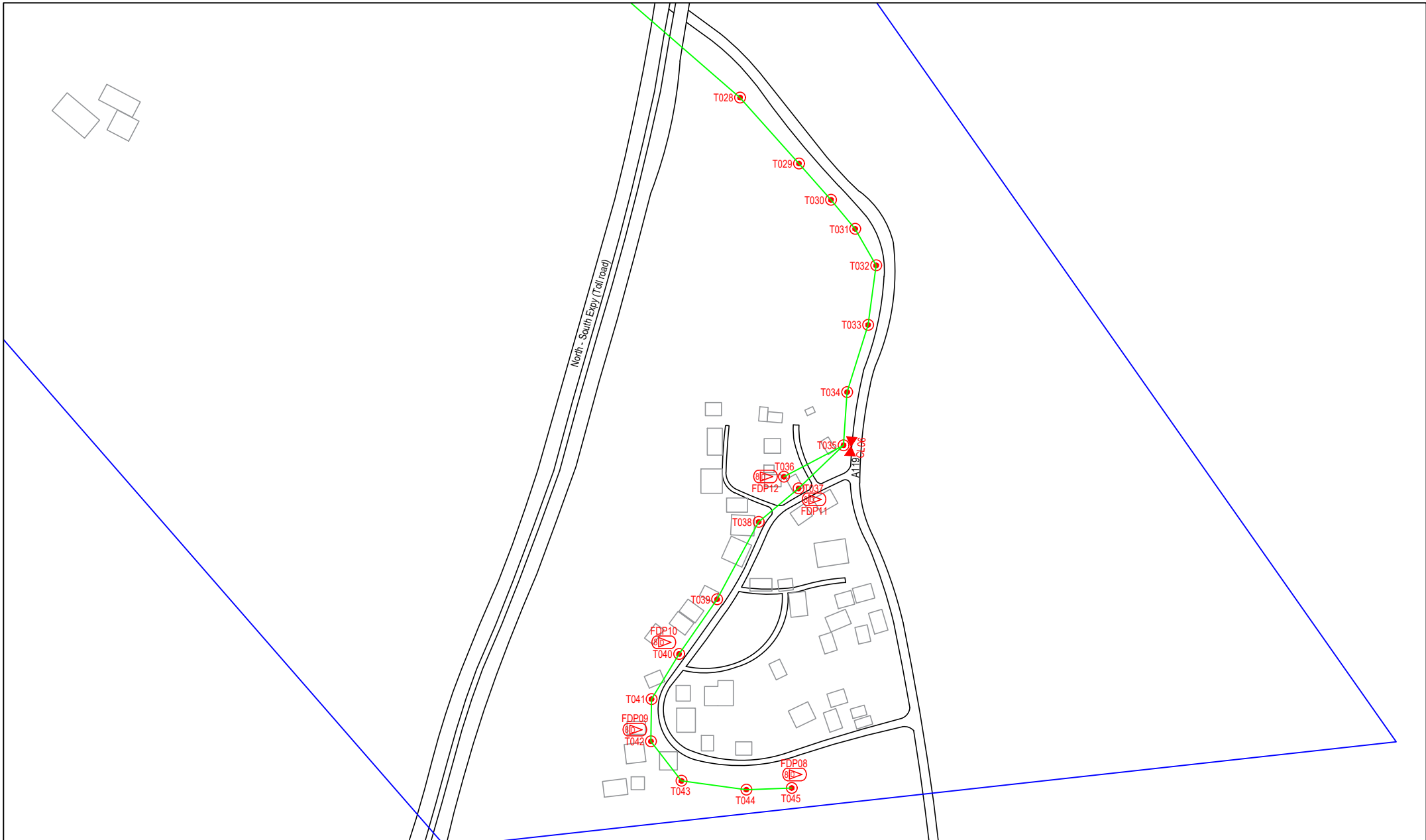
PROJECT TITLE :

AS-BUILT SITE PLAN DRAWING ABA9007 SEKOLAH KEBANGSAAN SAHOM

DRAWING TITLE:

PROJECT PHASE: POP 2

Design By : ENGINEER	Date : NOV 2024
Drawn By : CAD ENGINEER	Scale : NOT TO SCALE
Checked By : ENGINEER	Job Number : 1
DRAWING NUMBER : ABA9007-ABD-01B	Sheet : 3/7
THIS PRINT AND ITS COPYRIGHT ARE THE PROPERTY OF APEX COMMUNICATIONS SDN BHD	
Size : A3	



LEGEND	NOS.	NOS.	NOS.	NOS.	NOS.	NOS.	NOS.	NOS.	NOS.	NOS.		
12C FOC		Installed 1:4 / 1:8 / 1:32 splitter		Installed Pole (9m)		Suspension		BS30 New Manhole (PIT)		Micro-Trenching (Meter)		MH1 MH NO.
24C FOC	435	Installed Patch Cord		Installed Pole (7.5M)	118	Tension		CS7 New Manhole(JRC7)	2	Temporary Infra (Meter)		TKS-1 Existing TNB Pole NO.
48C FOC		FDC	1	Installed Pole (6.7M)		Pole Ring		FDP Boundary		Loop / Coil (Meter)		P001 New Pole NO.
96C FOC		Closure	9	Existing TNB Pole		FDP with (1:8) splitter	21	HDD (Meter)	60	# Active Outdoor Cabinet		CL01 Closure NO.
144C FOC		Existing Closure		Installed Riser		Existing Manhole		Open Cut (Meter)		CO1 FDC NO.		DP1 FDP NO.

ACTUAL HOMEPASS :

KEY PLAN :

POP2 PROJECT IN PERAK

OWNER/DEVELOPER :



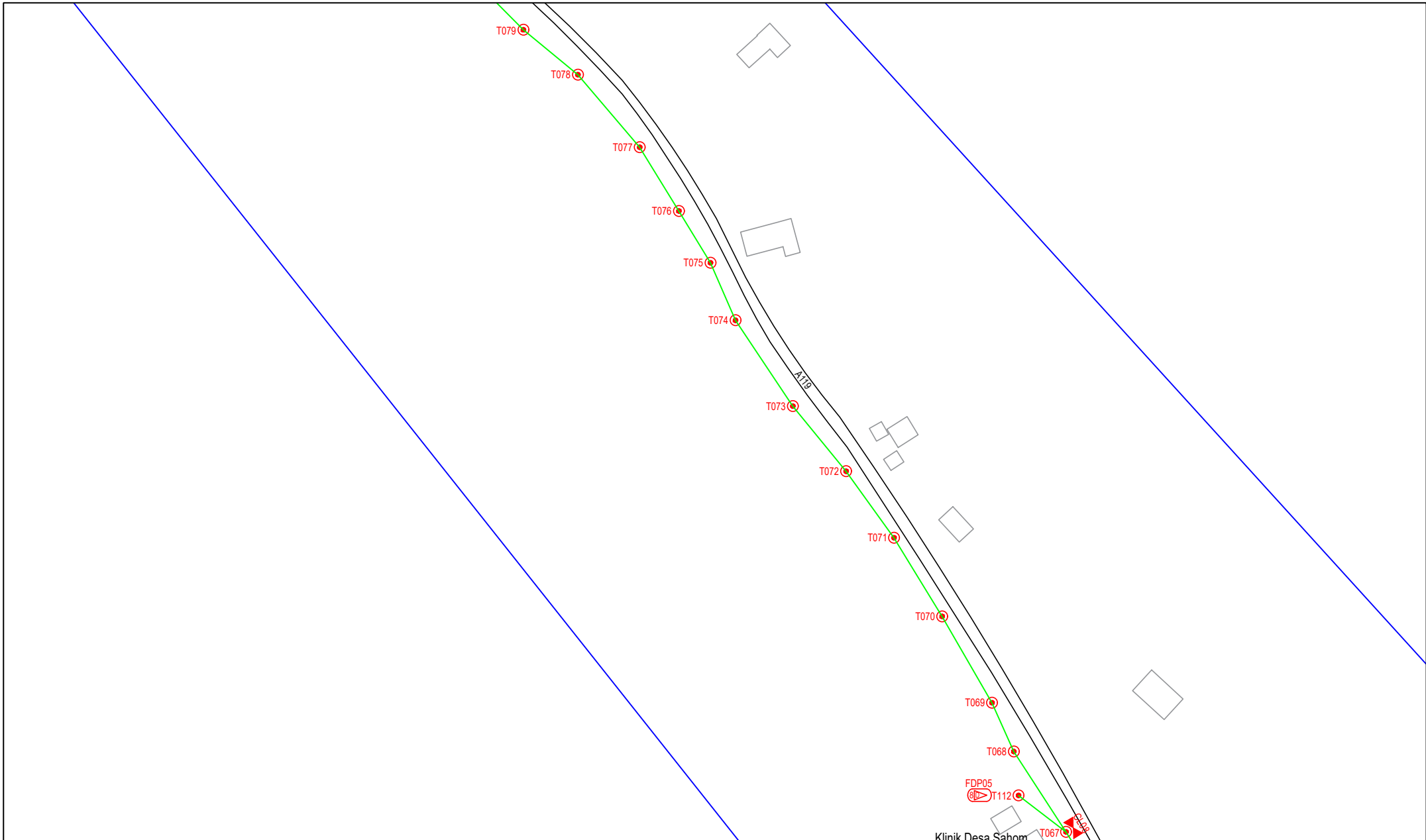
MAIN CONTRACTOR :

CONTRACTOR FOR SURVEY, TECHNICAL PROPOSAL AND WAYLEAVE, & PERMIT APPROVAL - POP2 PROJECT

PROJECT TITLE :

DRAWING TITLE:
AS-BUILT SITE PLAN DRAWING
ABA9007
SEKOLAH KEBANGSAAN SAHOM

Design By : ENGINEER	Date : NOV 2024
Drawn By : CAD ENGINEER	Scale : NOT TO SCALE
Checked By : ENGINEER	Job Number : 1
DRAWING NUMBER : ABA9007-ABD-01C	Sheet : 4/7
PROJECT PHASE: POP 2	THIS PRINT AND ITS COPYRIGHT ARE THE PROPERTY OF APEX COMMUNICATIONS SDN BHD
	Size : A3



LEGEND	NOS.	NOS.	NOS.	NOS.	NOS.	NOS.	NOS.	NOS.	NOS.				
12C FOC		Installed 1:4 / 1:8 / 1:32 splitter		Installed Pole (9m)		Suspension		New Manhole (PIT)		Micro-Trenching (Meter)		MHI	MH NO.
24C FOC	435	Installed Patch Cord		Installed Pole (7.5M)	118	Tension		New Manhole(JRC7)	2	Temporary Infra (Meter)		TKS-1	Existing TNB Pole NO.
48C FOC		FDC	1	Installed Pole (6.7M)		Pole Ring		FDP Boundary		Loop / Coil (Meter)		P001	New Pole NO.
96C FOC		Closure	9	Existing TNB Pole		FDP with (1:8) splitter	21	HDD (Meter)	60	#	Active Outdoor Cabinet	CL01	Closure NO.
144C FOC		Existing Closure		Installed Riser		Existing Manhole		Open Cut (Meter)		CO1	FDC NO.	DP1	FDP NO.

ACTUAL HOMEPASS :

KEY PLAN :

POP2 PROJECT IN PERAK

OWNER/DEVELOPER :

MAIN CONTRACTOR :

WCWL COMMUNICATIONS SDN BHD
127, JALAN PAU 3/3, TAMAN PUNCAK JAYA,
MUKAH, PUTRA PERANG,
43300 SERI KEMBANGAN, SELANGOR
TEL: +603 9588 9583
E-MAIL: info@wcwlcommunications.com.my

PROJECT TITLE :

CONTRACTOR FOR SURVEY, TECHNICAL PROPOSAL AND WAYLEAVE, & PERMIT APPROVAL - POP2 PROJECT

DRAWING TITLE:

AS-BUILT SITE PLAN DRAWING
ABA9007
SEKOLAH KEBANGSAAN SAHOM

PROJECT PHASE:
POP 2

Design By : ENGINEER
Date : NOV 2024

Drawn By : CAD ENGINEER
Scale : NOT TO SCALE

Checked By : ENGINEER
Job Number : 1

DRAWING NUMBER :
ABA9007-ABD-01D

Sheet :
5/7

THIS PRINT AND ITS COPYRIGHT ARE THE PROPERTY OF APEX COMMUNICATIONS SDN BHD

Size :
A3

Design By : ENGINEER
Date : NOV 2024

Drawn By : CAD ENGINEER
Scale : NOT TO SCALE

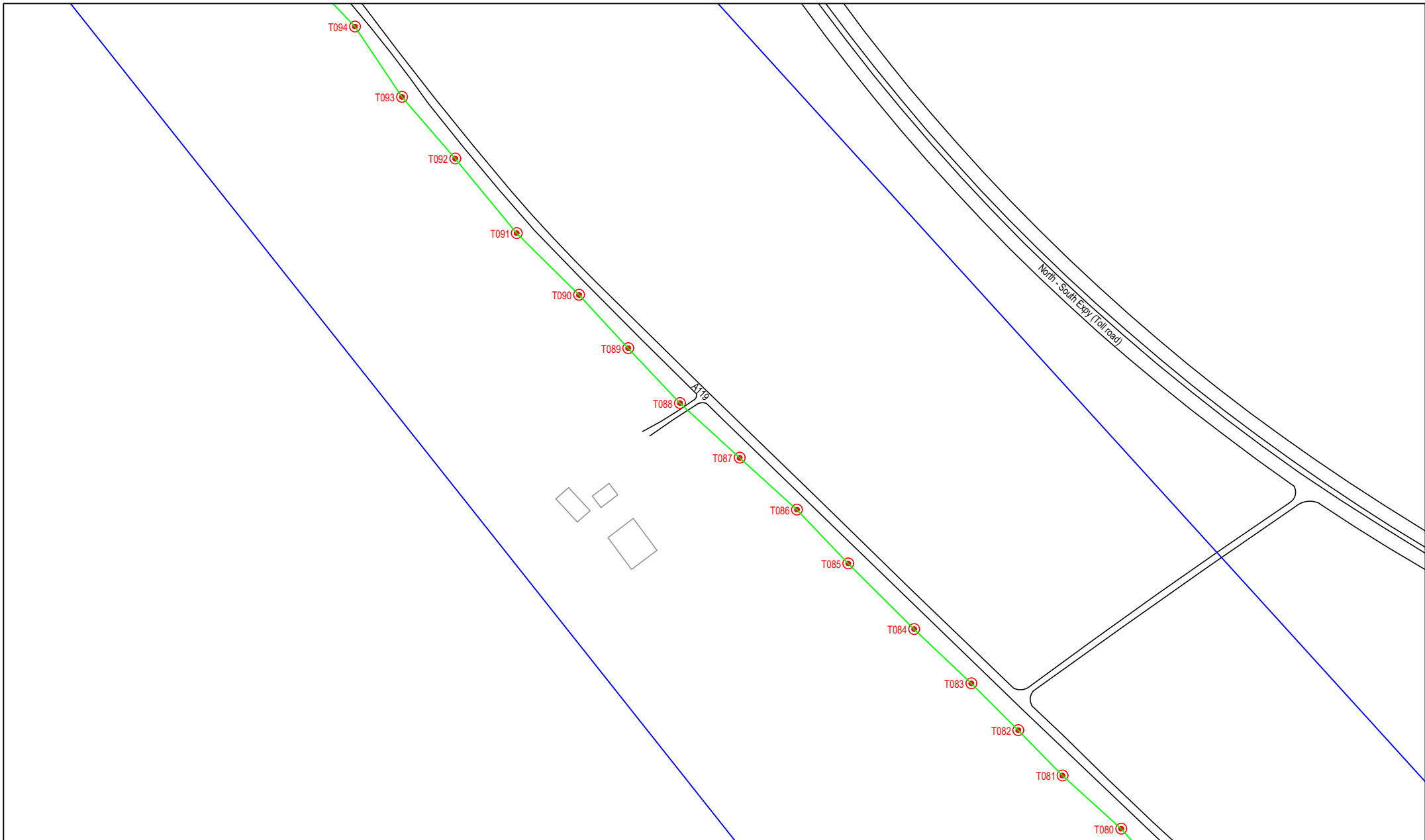
Checked By : ENGINEER
Job Number : 1

DRAWING NUMBER :
ABA9007-ABD-01D

Sheet :
5/7

THIS PRINT AND ITS COPYRIGHT ARE THE PROPERTY OF APEX COMMUNICATIONS SDN BHD

Size :
A3



LEGEND	NOS.	NOS.	NOS.	NOS.	NOS.	NOS.	NOS.	NOS.	NOS.				
12C FOC		Installed 1:4 / 1:8 / 1:32 splitter		Installed Pole (9m)		Suspension		New Manhole (PIT)		Micro-Trenching (Meter)		MH1	MH NO.
24C FOC	435	Installed Patch Cord		Installed Pole (7.5M)	118	Tension		New Manhole(JRC7)	2	Temporary Infra (Meter)		TKS-1	Existing TNB Pole NO.
48C FOC		FDC	1	Installed Pole (6.7M)		Pole Ring		FDP Boundary		Loop / Coil (Meter)		P001	New Pole NO.
96C FOC		Closure	9	Existing TNB Pole		FDP with (1:8) splitter	21	HDD (Meter)	60	#	Active Outdoor Cabinet	CL01	Closure NO.
144C FOC		Existing Closure		Installed Riser		Existing Manhole		Open Cut (Meter)		001	FDC NO.	DP1	FDP NO.

ACTUAL HOMEPASS :

KEY PLAN :

POP2 PROJECT IN PERAK

OWNER/DEVELOPER :

MAIN CONTRACTOR :

WCWL COMMUNICATIONS SDN BHD
127, JALAN PAU 3/3, TAMAN PUNCAK JAYA,
MUKAH, PUTRA PERANG,
43300 SERI KEMBANGAN, SELANGOR
TEL : +603 9588 9933
E-MAIL : info@wcwlcommunications.com.my

PROJECT TITLE :

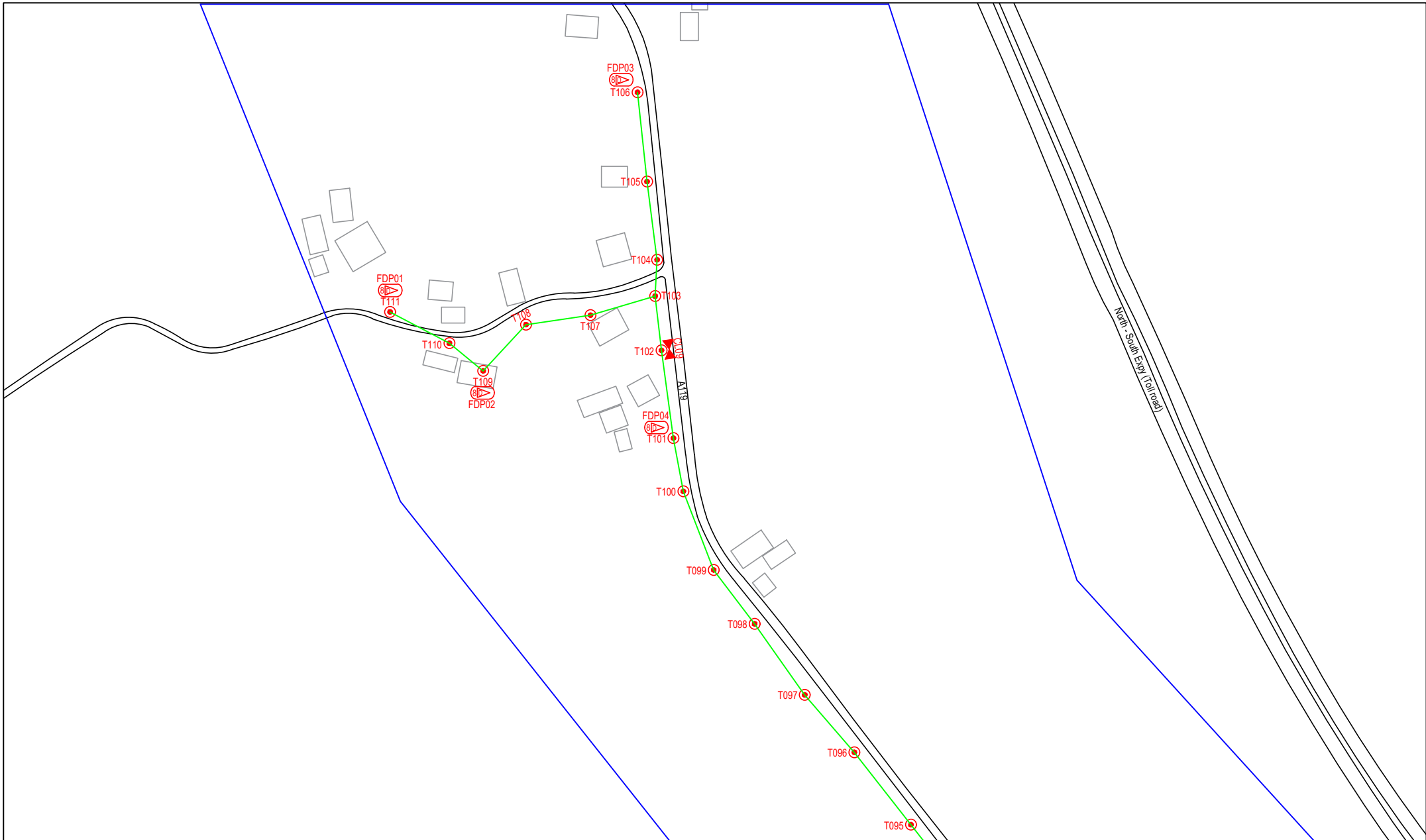
CONTRACTOR FOR SURVEY, TECHNICAL PROPOSAL AND WAYLEAVE, & PERMIT APPROVAL - POP2 PROJECT

DRAWING TITLE:

AS-BUILT SITE PLAN DRAWING
ABA9007
SEKOLAH KEBANGSAAN SAHOM

PROJECT PHASE:
POP 2

Design By : ENGINEER	Date : NOV 2024
Drawn By : CAD ENGINEER	Scale : NOT TO SCALE
Checked By : ENGINEER	Job Number : 1
DRAWING NUMBER : ABA9007-ABD-01E	Sheet : 6/7
THIS PRINT AND ITS COPYRIGHT ARE THE PROPERTY OF APEX COMMUNICATIONS SDN BHD	
Size : A3	



LEGEND	NOS.	NOS.	NOS.	NOS.	NOS.	NOS.	NOS.	NOS.	NOS.	NOS.	NOS.	
12C FOC		Installed 1:4 / 1:8 / 1:32 splitter		Installed Pole (9m)		Suspension		BS30 New Manhole (PIT)		Micro-Trenching (Meter)		MH1 MH NO.
24C FOC	4353	Installed Patch Cord		Installed Pole (7.5M)	118	Tension		BS7 New Manhole(JRC7)	2	Temporary Infra (Meter)		TKS-1 Existing TNB Pole NO.
48C FOC		FDC	1	Installed Pole (6.7M)		Pole Ring		FDP Boundary		Loop / Coil (Meter)		P001 New Pole NO.
96C FOC		Closure	9	Existing TNB Pole		FDP with (1:8) splitter	21	HDD (Meter)	60	# Active Outdoor Cabinet		CL01 Closure NO.
144C FOC		Existing Closure		Installed Riser		Existing Manhole		Open Cut (Meter)		001 FDC NO.		DP1 FDP NO.

ACTUAL HOMEPASS :

KEY PLAN :
POP2 PROJECT IN PERAK

OWNER/DEVELOPER :



PROJECT TITLE :
CONTRACTOR FOR SURVEY, TECHNICAL PROPOSAL AND WAYLEAVE, & PERMIT APPROVAL - POP2 PROJECT

DRAWING TITLE:
AS-BUILT SITE PLAN DRAWING ABA9007 SEKOLAH KEBANGSAAN SAHOM
PROJECT PHASE: POP 2

Design By : ENGINEER	Date : NOV 2024
Drawn By : CAD ENGINEER	Scale : NOT TO SCALE
Checked By : ENGINEER	Job Number : 1
DRAWING NUMBER : ABA9007-ABD-01F	Sheet : 7/7
THIS PRINT AND ITS COPYRIGHT ARE THE PROPERTY OF APEX COMMUNICATIONS SDN BHD	
Size : A3	