

TECHNICAL PROPOSAL

POP2 ABA5070 SEKOLAH KEBANGSAAN PENGGKALAN ARA (D-SIDE)

Company Name : T&H PANJI EMPIRE SDN BHD
Company Address : 39A, Jalan Jelapang 5, Pusat Komersial Jelapang, 30020 Ipoh, Perak Darul Ridzuan.
Prepared By : Mat Salleh bin Mat Zain
Date : 5/12/2024



Starting Point

Site / Boundary Name : Kampung Pengkalan Ara
 Address : SK Pengkalan Ara, Chenderong Balai
 District : Chenderong Balai
 Postcode : 36600
 State : Perak
 GPS Coordinate : 4.119188, 101.051680
 LRD : A

End Point

Site / Boundary Name : Kampung Pengkalan Ara
 Address : Kampung Pengkalan Ara, Chenderong Balai
 District : Chenderong Balai
 Postcode : 36600
 State : Perak
 GPS Coordinate : 4.119210, 101.049012
 LRD : B



PROJEK PENYEDIAAN DAN PENYELENGGARAAN POINT OF PRESENT (POP) FASA 2: HAB INFRASTRUKTUR GENTIAN OPTIK BERHAMPIRAN DENGAN SEKOLAH, KAWASAN PERINDUSTRIAN, PREMIS KERAJAAN DAN KOMUNITI SEKITARNYA OLEH KEMENTERIAN KOMUNIKASI MALAYSIA - ZON UTARA (KKMM.400-11/17/132(1))



1.0 WORK SUMMARY

NO	PROPOSED DISTANCE AND METHOD	UNIT	QUANTITY
1	Horizontal Directional Drilling (HDD)	m	0
2	Carriage Way Open Trench (CW)	m	0
3	Grass Verge Open Trenching (GV)	m	0
4	Micro Trenching (MT)	m	0
Total			0

NO	OTHER INFORMATION	UNIT	QUANTITY
1	Installation of Short Span ADSS Fiber Cables	m	5000
2	Existing New Pole	ea	133
3	Install New JRC7 Manhole	ea	0
4	Install GI Riser 100mm	ea	0
5	Install Fiber Distribution Point and Closure (Splicing, Termination and Testing)	ea	20
6	Estimated Time Required for Completion	days	30



PROJEK PENYEDIAAN DAN PENYELENGGARAAN POINT OF PRESENT (POP) FASA 2: HAB INFRASTRUKTUR GENTIAN OPTIK BERHAMPIRAN DENGAN SEKOLAH, KAWASAN PERINDUSTRIAN, PREMIS KERAJAAN DAN KOMUNITI SEKITARNYA OLEH KEMENTERIAN KOMUNIKASI MALAYSIA - ZON UTARA (KKMM.400-11/17/132(1))



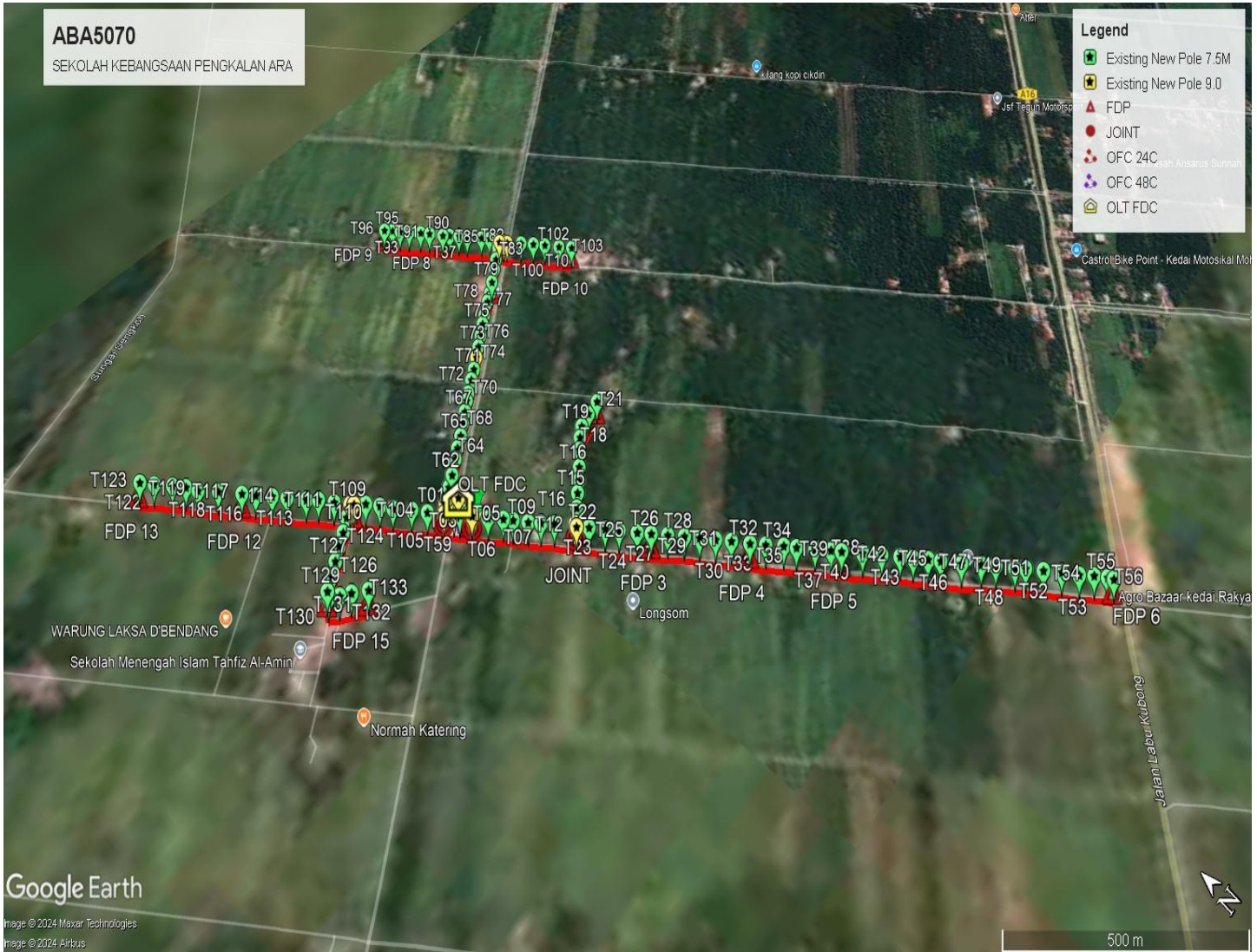
2.0 LOCAL AUTHORITY SUMMARY

Daerah Manjung

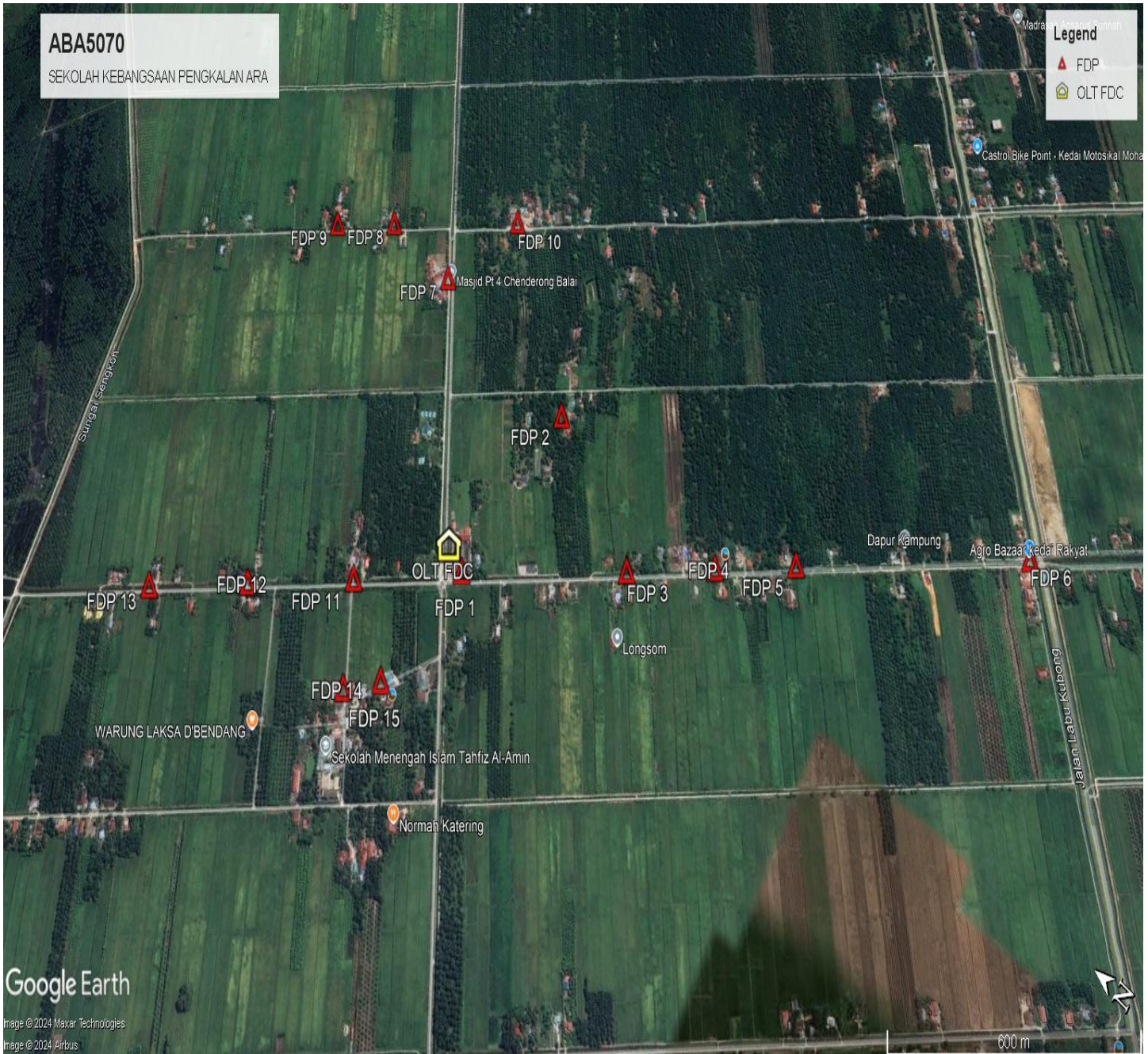
NO	ITEMS	Owner	Quantity	Distance (m)
1	HDD	JKR	-	-
		Majlis	-	-
		Estate / Private Land	-	-
2	Existing New Pole	JKR	-	-
		Majlis	133	5000
		Estate / Private Land	-	-
Total Distance (m)				5000

3.0 SITE PLAN (KMZ)

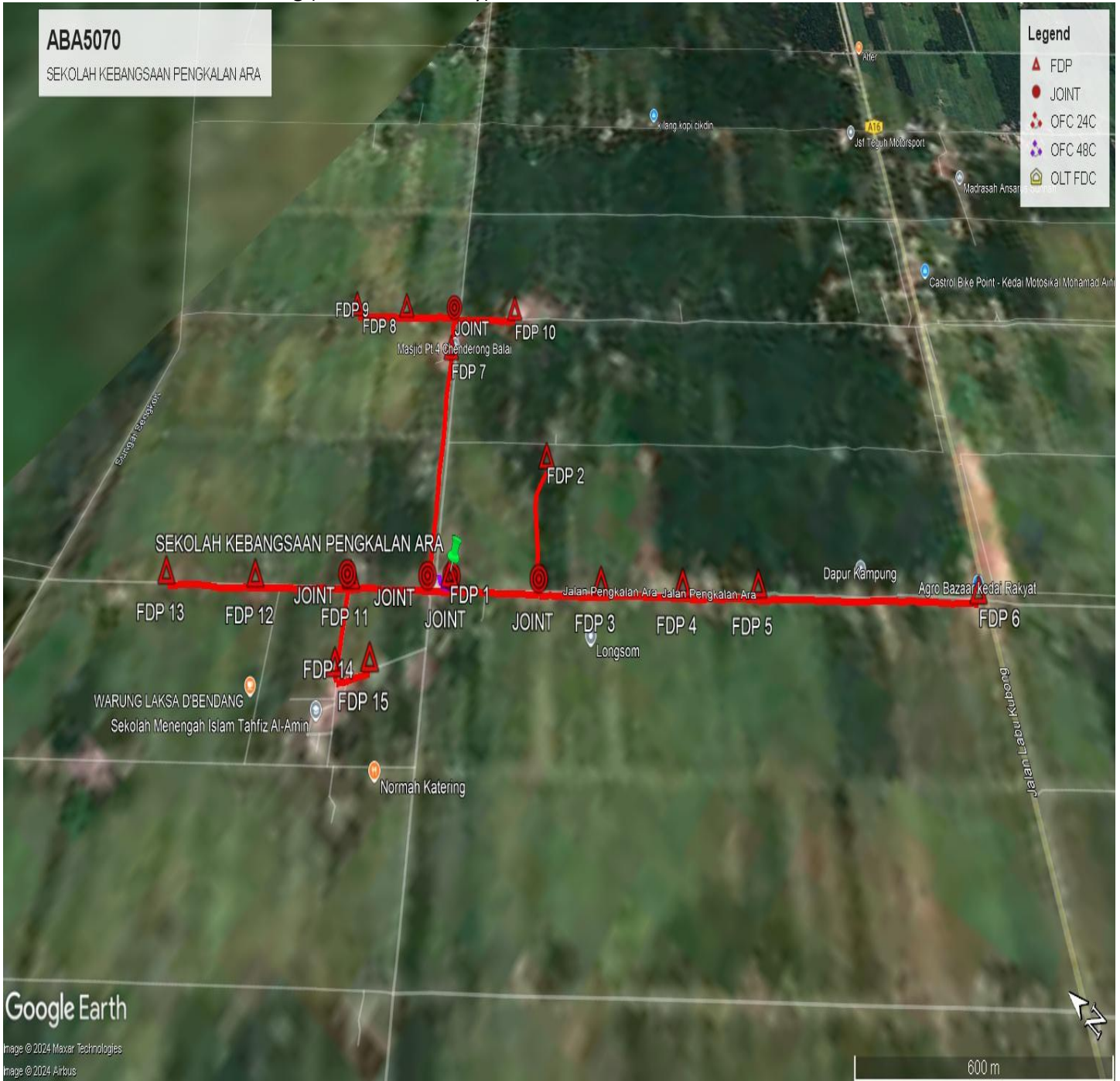
3.1 Overview Site Area



3.2 Location FDP



3.3 Site Plan - KMZ Routing (All Local Authority)



Red Colour - Majlis Road

4.0 PROPOSED NEW MANHOLE

Proposed New Manhole Coordinate					
No.	Manhole Number	Distance (m)	Latitude	Longitude	Local Authority
1	MH01	-	-	-	-
2	MH02	-	-	-	-

5.0 PROPOSED NEW POLE

Proposed New Pole Coordinate					
No.	Pole Number	Distance (m)	Latitude	Longitude	Local Authority
1	T001	35	4.119188	101.051680	Majlis Perbandaran Teluk Intan
2	T002	26	4.118954	101.051515	Majlis Perbandaran Teluk Intan
3	T003 (FDP 1)	12	4.118745	101.051619	Majlis Perbandaran Teluk Intan
4	T004	12	4.118650	101.051686	Majlis Perbandaran Teluk Intan
5	T005	41	4.118643	101.051585	Majlis Perbandaran Teluk Intan
6	T006	38	4.118334	101.051784	Majlis Perbandaran Teluk Intan
7	T007	25	4.118057	101.051993	Majlis Perbandaran Teluk Intan
8	T008	38	4.117868	101.052113	Majlis Perbandaran Teluk Intan
9	T009	32	4.117590	101.052308	Majlis Perbandaran Teluk Intan
10	T010	34	4.117357	101.052481	Majlis Perbandaran Teluk Intan
11	T011	56	4.117110	101.052656	Majlis Perbandaran Teluk Intan
12	T012	10	4.116691	101.052932	Majlis Perbandaran Teluk Intan
13	T013	38	4.116767	101.052968	Majlis Perbandaran Teluk Intan
14	T014	39	4.116970	101.053251	Majlis Perbandaran Teluk Intan
15	T015	30	4.117187	101.053521	Majlis Perbandaran Teluk Intan
16	T016	35	4.117352	101.053740	Majlis Perbandaran Teluk Intan
17	T017	35	4.117556	101.053992	Majlis Perbandaran Teluk Intan
18	T018	32	4.117838	101.054307	Majlis Perbandaran Teluk Intan
19	T019	37	4.118026	101.054546	Majlis Perbandaran Teluk Intan
20	T020	41	4.118184	101.054782	Majlis Perbandaran Teluk Intan
21	T021	41	4.118268	101.055124	Majlis Perbandaran Teluk Intan
22	T022 (FDP 2)	31	4.118319	101.055490	Majlis Perbandaran Teluk Intan
23	T023	40	4.116469	101.053103	Majlis Perbandaran Teluk Intan
24	T024	35	4.116174	101.053313	Majlis Perbandaran Teluk Intan
25	T025	45	4.115915	101.053496	Majlis Perbandaran Teluk Intan
26	T026	35	4.115572	101.053716	Majlis Perbandaran Teluk Intan
27	T027 (FDP 3)	41	4.115317	101.053896	Majlis Perbandaran Teluk Intan
28	T028	41	4.115012	101.054102	Majlis Perbandaran Teluk Intan
29	T029	38	4.114706	101.054316	Majlis Perbandaran Teluk Intan
30	T030	40	4.114433	101.054512	Majlis Perbandaran Teluk Intan
31	T031	39	4.114140	101.054719	Majlis Perbandaran Teluk Intan
32	T032	45	4.113851	101.054916	Majlis Perbandaran Teluk Intan

Proposed New Pole Coordinate					
No.	Pole Number	Distance (m)	Latitude	Longitude	Local Authority
33	T033 (FDP 4)	39	4.113505	101.055140	Majlis Perbandaran Teluk Intan
34	T034	44	4.113223	101.055340	Majlis Perbandaran Teluk Intan
35	T035	31	4.112904	101.055576	Majlis Perbandaran Teluk Intan
36	T036	45	4.112668	101.055732	Majlis Perbandaran Teluk Intan
37	T037	38	4.112337	101.055969	Majlis Perbandaran Teluk Intan
38	T038	26	4.112050	101.056163	Majlis Perbandaran Teluk Intan
39	T039 (FDP 5)	51	4.111868	101.056295	Majlis Perbandaran Teluk Intan
40	T040	47	4.111476	101.056549	Majlis Perbandaran Teluk Intan
41	T041	45	4.111139	101.056795	Majlis Perbandaran Teluk Intan
42	T042	31	4.110810	101.057027	Majlis Perbandaran Teluk Intan
43	T043	36	4.110573	101.057175	Majlis Perbandaran Teluk Intan
44	T044	30	4.110312	101.057375	Majlis Perbandaran Teluk Intan
45	T045	50	4.110083	101.057525	Majlis Perbandaran Teluk Intan
46	T046	47	4.109712	101.057779	Majlis Perbandaran Teluk Intan
47	T047	35	4.109370	101.058027	Majlis Perbandaran Teluk Intan
48	T048	46	4.109115	101.058209	Majlis Perbandaran Teluk Intan
49	T049	27	4.108773	101.058441	Majlis Perbandaran Teluk Intan
50	T050	42	4.108587	101.058566	Majlis Perbandaran Teluk Intan
51	T051	43	4.108272	101.058788	Majlis Perbandaran Teluk Intan
52	T052	45	4.107954	101.059019	Majlis Perbandaran Teluk Intan
53	T053	41	4.107636	101.059215	Majlis Perbandaran Teluk Intan
54	T054	37	4.107384	101.059416	Majlis Perbandaran Teluk Intan
55	T055	33	4.107144	101.059581	Majlis Perbandaran Teluk Intan
56	T056 (FDP 6)	15	4.107049	101.059633	Majlis Perbandaran Teluk Intan
57	T057	31	4.118876	101.051433	Majlis Perbandaran Teluk Intan
58	T058	15	4.118991	101.051364	Majlis Perbandaran Teluk Intan
59	T059	25	4.119165	101.051218	Majlis Perbandaran Teluk Intan
60	T060	25	4.119311	101.051389	Majlis Perbandaran Teluk Intan
61	T061	40	4.119510	101.051700	Majlis Perbandaran Teluk Intan
62	T062	32	4.119661	101.051947	Majlis Perbandaran Teluk Intan
63	T063	43	4.119879	101.052261	Majlis Perbandaran Teluk Intan
64	T064	29	4.120031	101.052477	Majlis Perbandaran Teluk Intan
65	T065	35	4.120190	101.052736	Majlis Perbandaran Teluk Intan
66	T066	37	4.120400	101.052997	Majlis Perbandaran Teluk Intan
67	T067	32	4.120554	101.053231	Majlis Perbandaran Teluk Intan
68	T068	34	4.120742	101.053468	Majlis Perbandaran Teluk Intan
69	T069	25	4.120872	101.053644	Majlis Perbandaran Teluk Intan
70	T070	40	4.121070	101.053946	Majlis Perbandaran Teluk Intan
71	T071	32	4.121227	101.054189	Majlis Perbandaran Teluk Intan
72	T072	37	4.121419	101.054461	Majlis Perbandaran Teluk Intan
73	T073	31	4.121581	101.054697	Majlis Perbandaran Teluk Intan
74	T074	35	4.121764	101.054950	Majlis Perbandaran Teluk Intan

75	T075	36	4.121957	101.055220	Majlis Perbandaran Teluk Intan
76	T076	29	4.122104	101.055432	Majlis Perbandaran Teluk Intan
77	T077	44	4.122323	101.055763	Majlis Perbandaran Teluk Intan
78	T078	29	4.122455	101.055982	Majlis Perbandaran Teluk Intan
79	T079 (FDP 7)	37	4.122652	101.056256	Majlis Perbandaran Teluk Intan
80	T080	44	4.122883	101.056584	Majlis Perbandaran Teluk Intan
81	T081	35	4.123068	101.056831	Majlis Perbandaran Teluk Intan
82	T082	40	4.123274	101.057117	Majlis Perbandaran Teluk Intan
83	T083	21	4.123379	101.057281	Majlis Perbandaran Teluk Intan
84	T084	12	4.123477	101.057300	Majlis Perbandaran Teluk Intan
85	T085	24	4.123665	101.057193	Majlis Perbandaran Teluk Intan
86	T086	26	4.123854	101.057069	Majlis Perbandaran Teluk Intan
87	T087	43	4.124170	101.056849	Majlis Perbandaran Teluk Intan
88	T088	24	4.124365	101.056726	Majlis Perbandaran Teluk Intan
89	T089	26	4.124567	101.056571	Majlis Perbandaran Teluk Intan
90	T090 (FDP 8)	21	4.124715	101.056449	Majlis Perbandaran Teluk Intan
91	T091	40	4.125019	101.056253	Majlis Perbandaran Teluk Intan
92	T092	27	4.125223	101.056117	Majlis Perbandaran Teluk Intan
93	T093	34	4.125477	101.055934	Majlis Perbandaran Teluk Intan
94	T094	27	4.125673	101.055783	Majlis Perbandaran Teluk Intan
95	T095	24	4.125854	101.055669	Majlis Perbandaran Teluk Intan
96	T096 (FDP 9)	26	4.126048	101.055538	Majlis Perbandaran Teluk Intan
97	T097	14	4.123275	101.057350	Majlis Perbandaran Teluk Intan
98	T098	11	4.123196	101.057393	Majlis Perbandaran Teluk Intan
99	T099	42	4.122887	101.057609	Majlis Perbandaran Teluk Intan
100	T100	37	4.122604	101.057792	Majlis Perbandaran Teluk Intan
101	T101	34	4.122361	101.057983	Majlis Perbandaran Teluk Intan
102	T102	42	4.122054	101.058207	Majlis Perbandaran Teluk Intan
103	T103 (FDP 10)	39	4.121779	101.058389	Majlis Perbandaran Teluk Intan
104	T104	42	4.119472	101.050992	Majlis Perbandaran Teluk Intan
105	T105	40	4.119786	101.050807	Majlis Perbandaran Teluk Intan
106	T106	49	4.120145	101.050557	Majlis Perbandaran Teluk Intan
107	T107	32	4.120407	101.050400	Majlis Perbandaran Teluk Intan
108	T108	37	4.120689	101.050222	Majlis Perbandaran Teluk Intan
109	T109 (FDP 11)	29	4.120884	101.050043	Majlis Perbandaran Teluk Intan
110	T110	11	4.120957	101.049987	Majlis Perbandaran Teluk Intan
111	T111	40	4.121263	101.049784	Majlis Perbandaran Teluk Intan
112	T112	41	4.121577	101.049589	Majlis Perbandaran Teluk Intan
113	T113	32	4.121802	101.049412	Majlis Perbandaran Teluk Intan
114	T114	49	4.122158	101.049153	Majlis Perbandaran Teluk Intan
115	T115	39	4.122448	101.048959	Majlis Perbandaran Teluk Intan
116	T116	42	4.122746	101.048727	Majlis Perbandaran Teluk Intan
117	T117 (FDP 12)	37	4.123038	101.048546	Majlis Perbandaran Teluk Intan
118	T118	63	4.123489	101.048237	Majlis Perbandaran Teluk Intan
119	T119	52	4.123886	101.047989	Majlis Perbandaran Teluk Intan

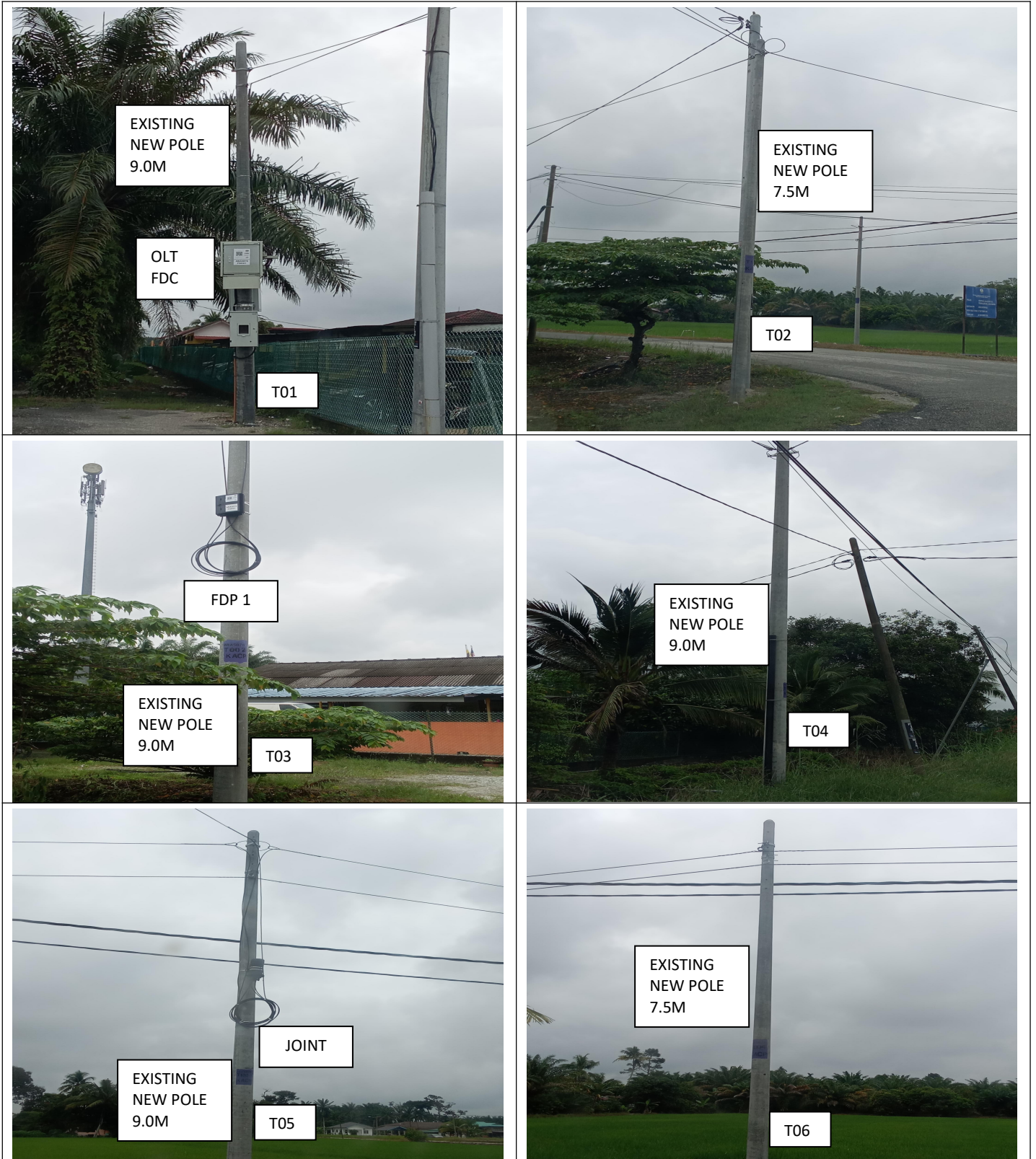


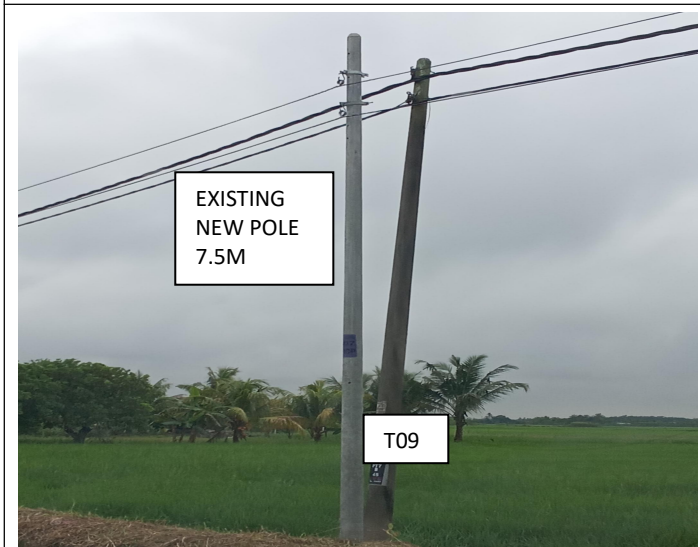
PROJEK PENYEDIAAN DAN PENYELENGGARAAN POINT OF PRESENT (POP) FASA 2: HAB INFRASTRUKTUR GENTIAN OPTIK BERHAMPIRAN DENGAN SEKOLAH, KAWASAN PERINDUSTRIAN, PREMIS KERAJAAN DAN KOMUNITI SEKITARNYA OLEH KEMENTERIAN KOMUNIKASI MALAYSIA - ZON UTARA (KKMM.400-11/17/132(1))



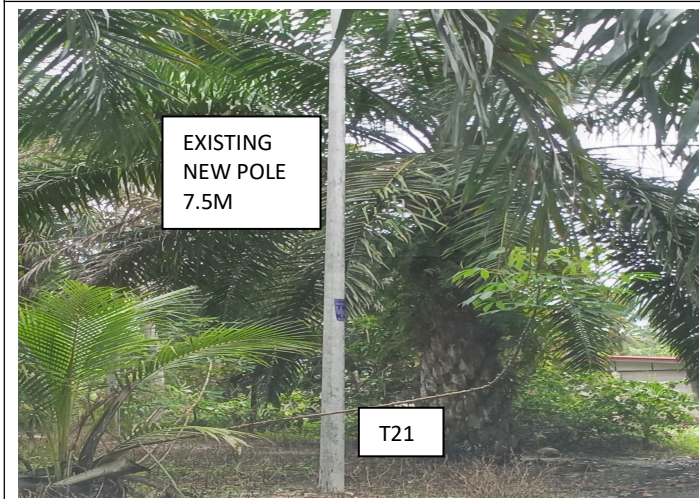
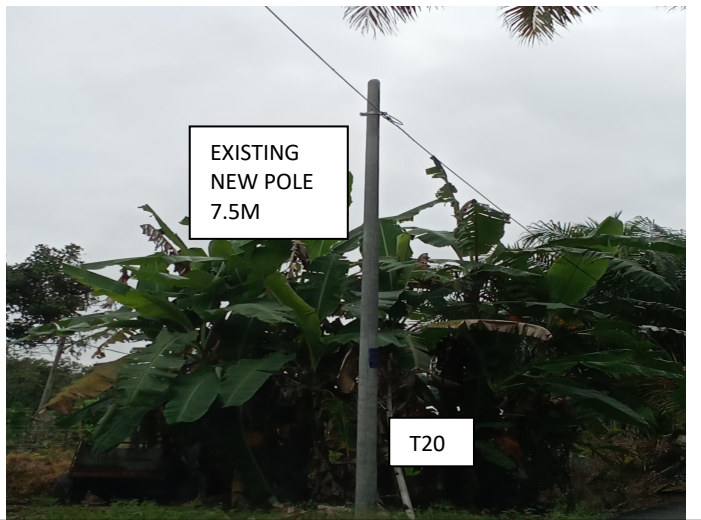
120	T120	33	4.124128	101.047814	Majlis Perbandaran Teluk Intan
121	T121	37	4.124399	101.047636	Majlis Perbandaran Teluk Intan
122	T122	47	4.124743	101.047382°	Majlis Perbandaran Teluk Intan
123	T123 (FDP 13)	37	4.125035	101.047161	Majlis Perbandaran Teluk Intan
124	T124	33	4.120780	101.049737	Majlis Perbandaran Teluk Intan
125	T125	37	4.120575	101.049463	Majlis Perbandaran Teluk Intan
126	T126	33	4.120412	101.049209	Majlis Perbandaran Teluk Intan
127	T127	37	4.120221	101.048944	Majlis Perbandaran Teluk Intan
128	T128	36	4.120042	101.048687	Majlis Perbandaran Teluk Intan
129	T129 (FDP 14)	35	4.119881	101.048426	Majlis Perbandaran Teluk Intan
130	T130	15	4.119744	101.048359	Majlis Perbandaran Teluk Intan
131	T131	26	4.119583	101.048530	Majlis Perbandaran Teluk Intan
132	T132	28	4.119441	101.048735	Majlis Perbandaran Teluk Intan
133	T133 (FDP 15)	39	4.119210	101.049012	Majlis Perbandaran Teluk Intan

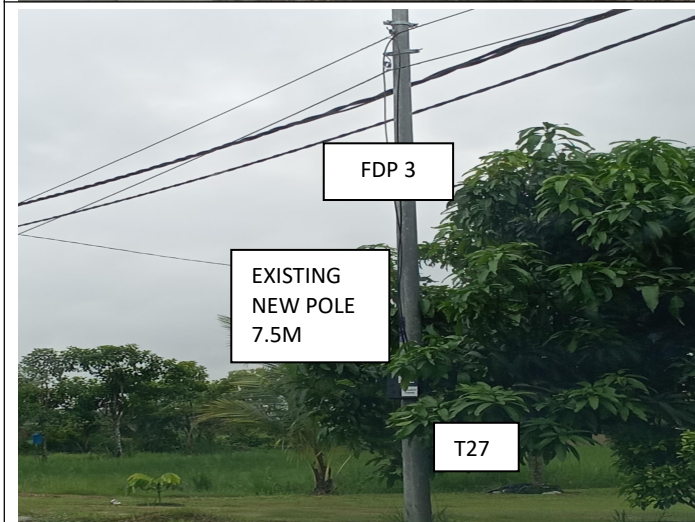
6.0 SITE PHOTOS - PROPOSED NEW POLE

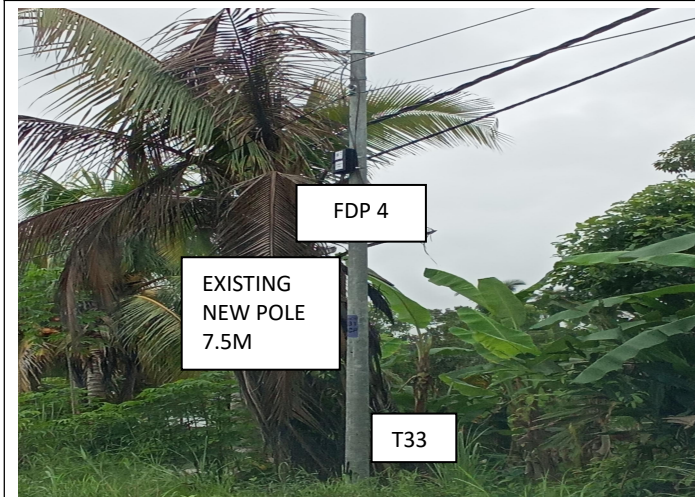
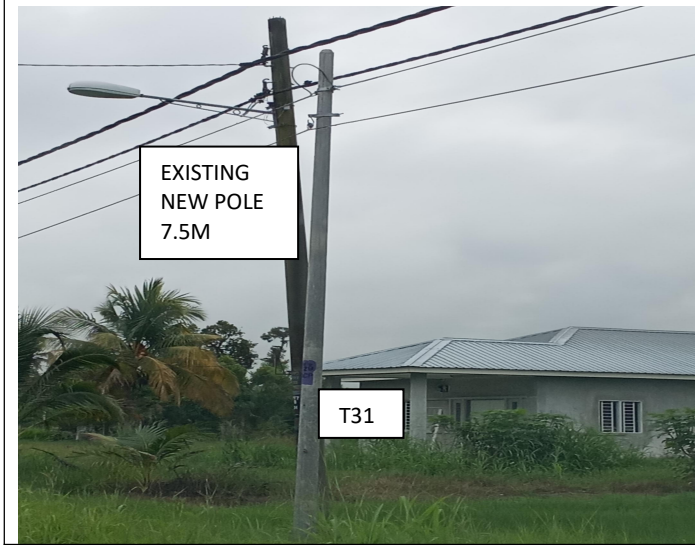


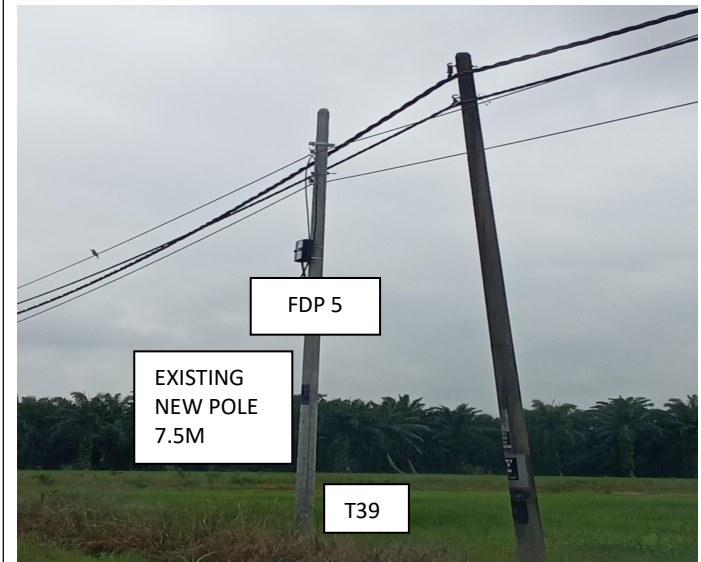




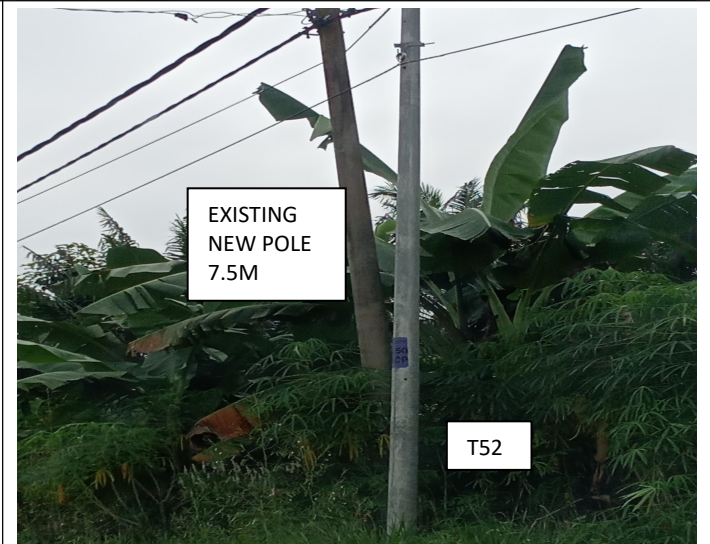


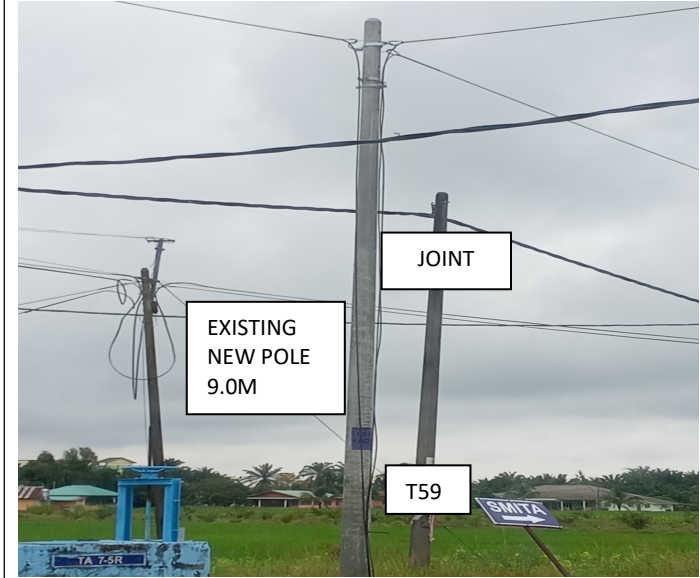
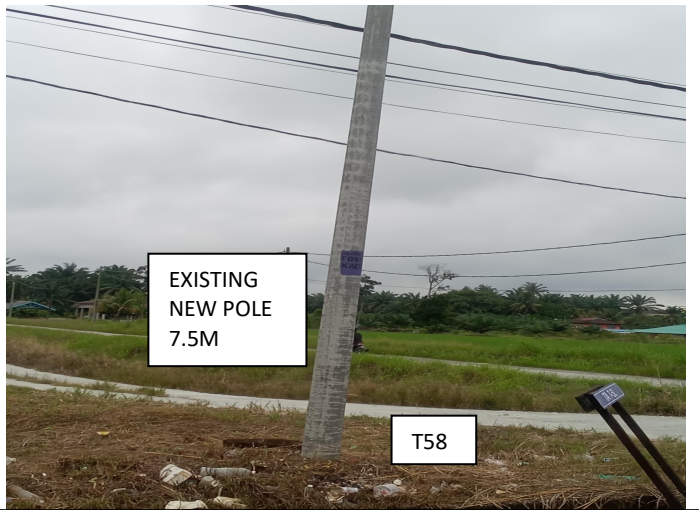






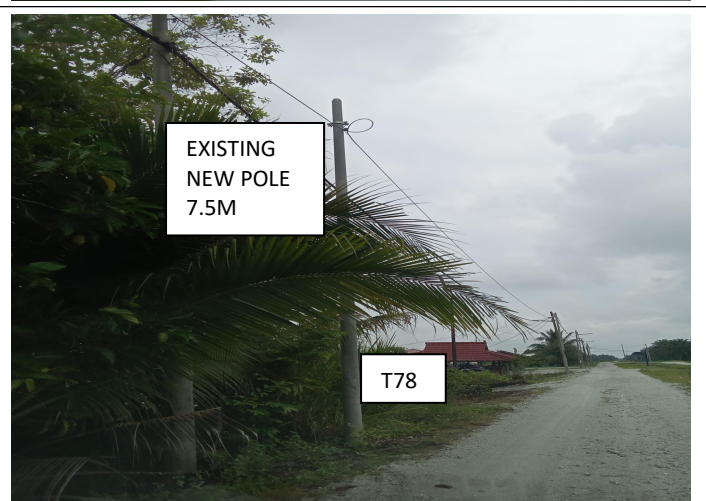




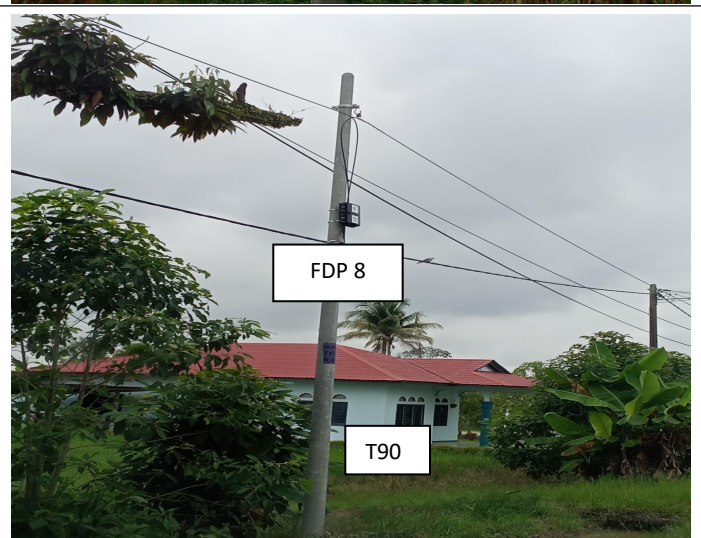
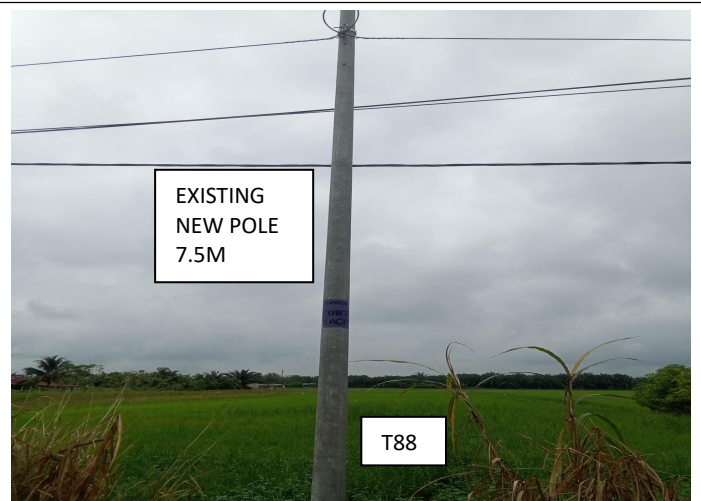


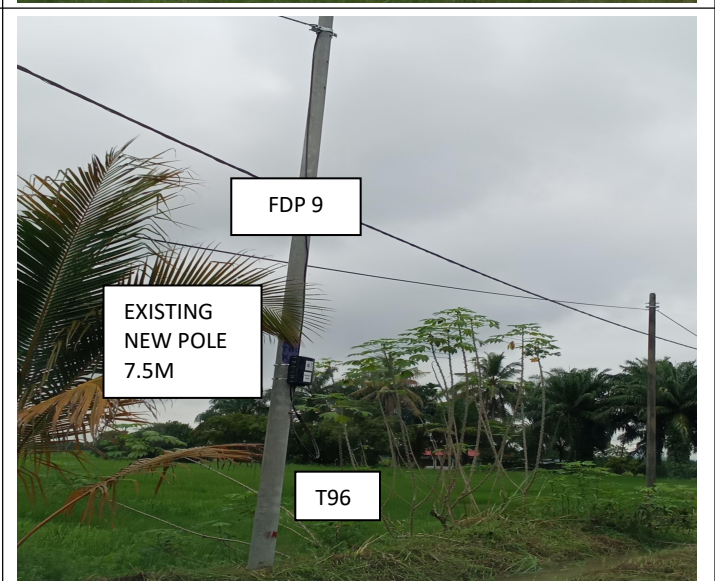
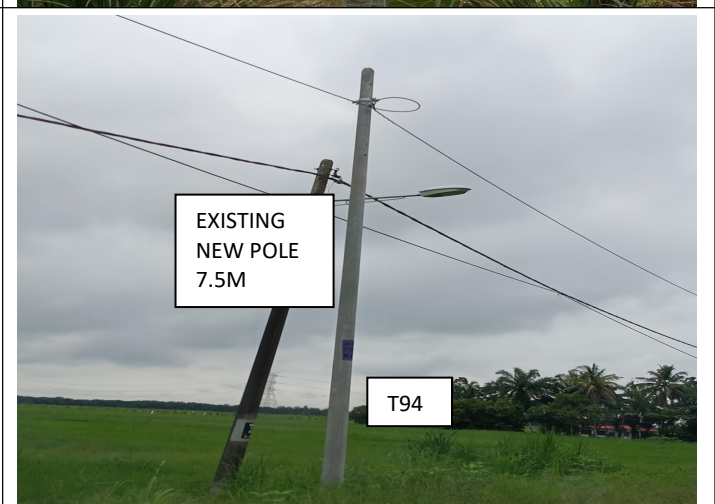
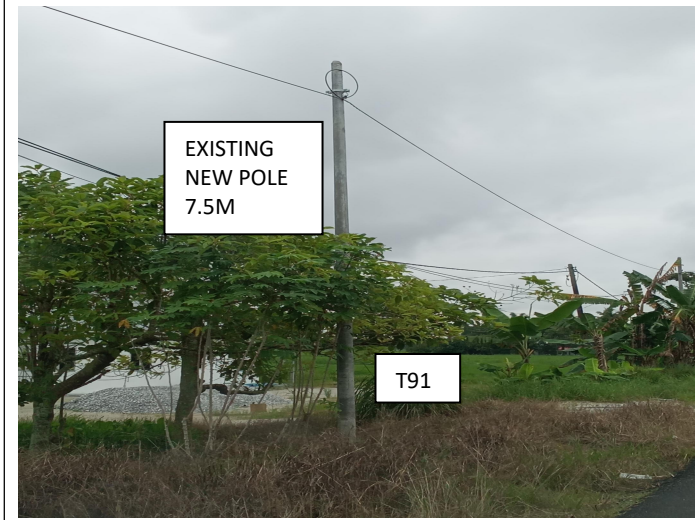




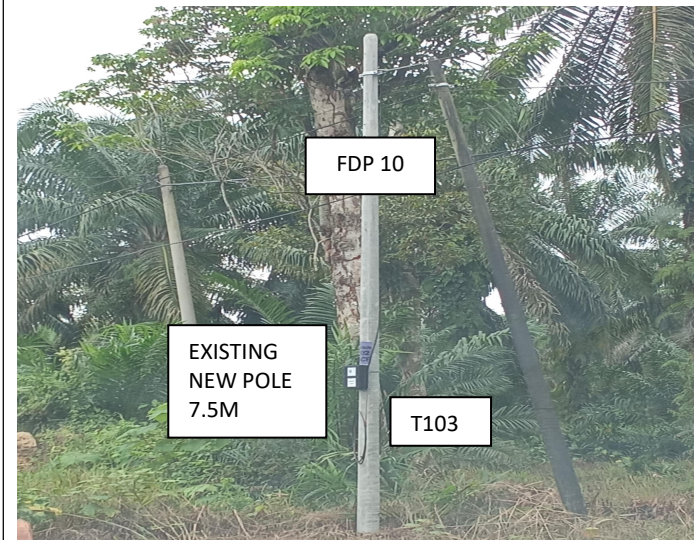


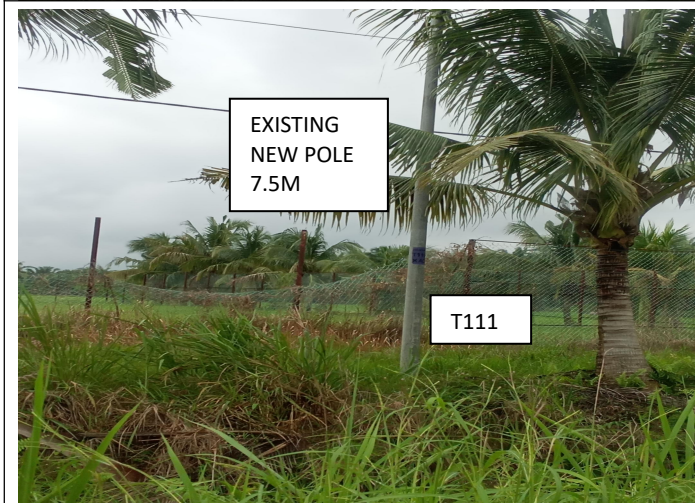
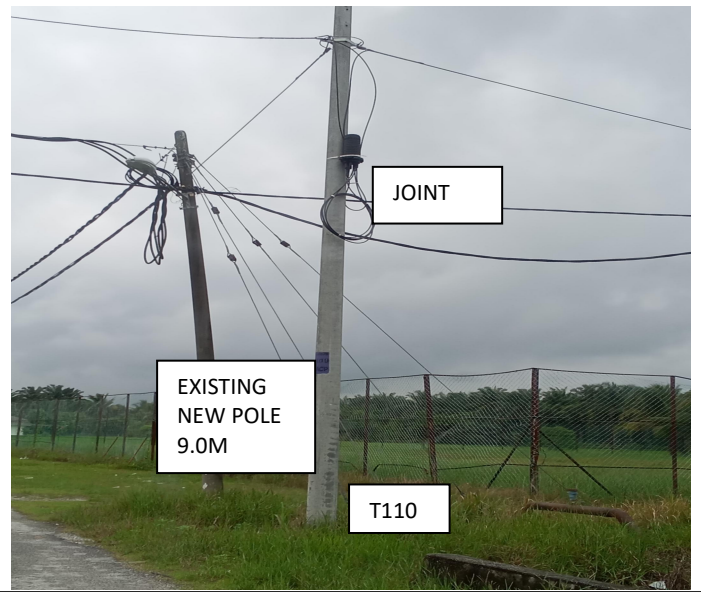


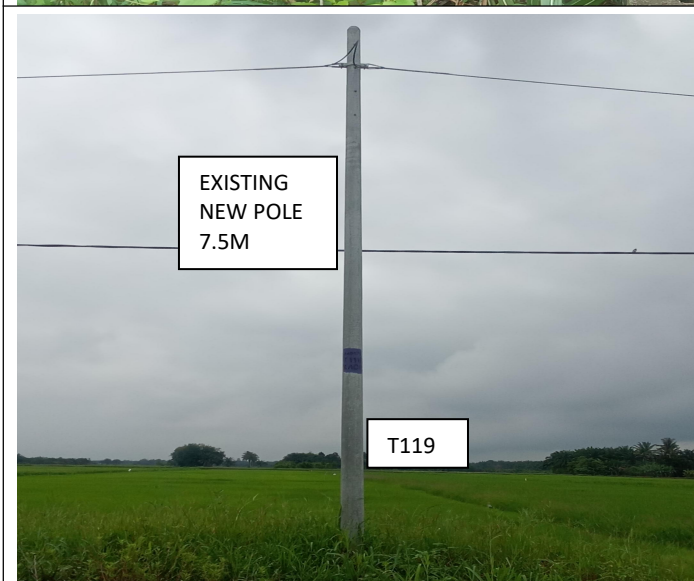
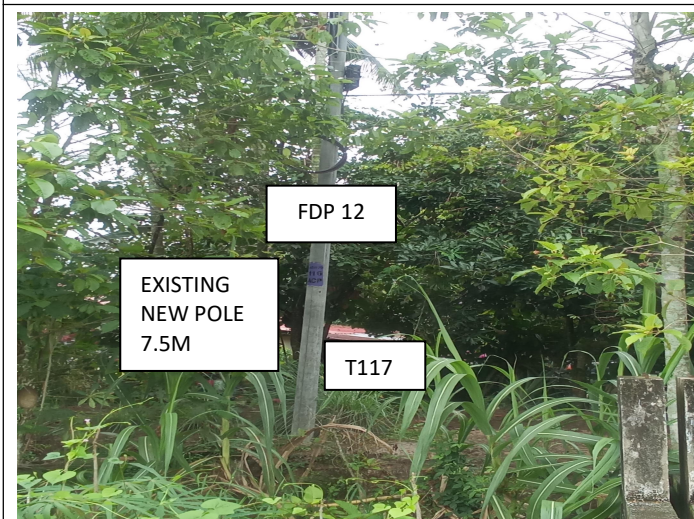














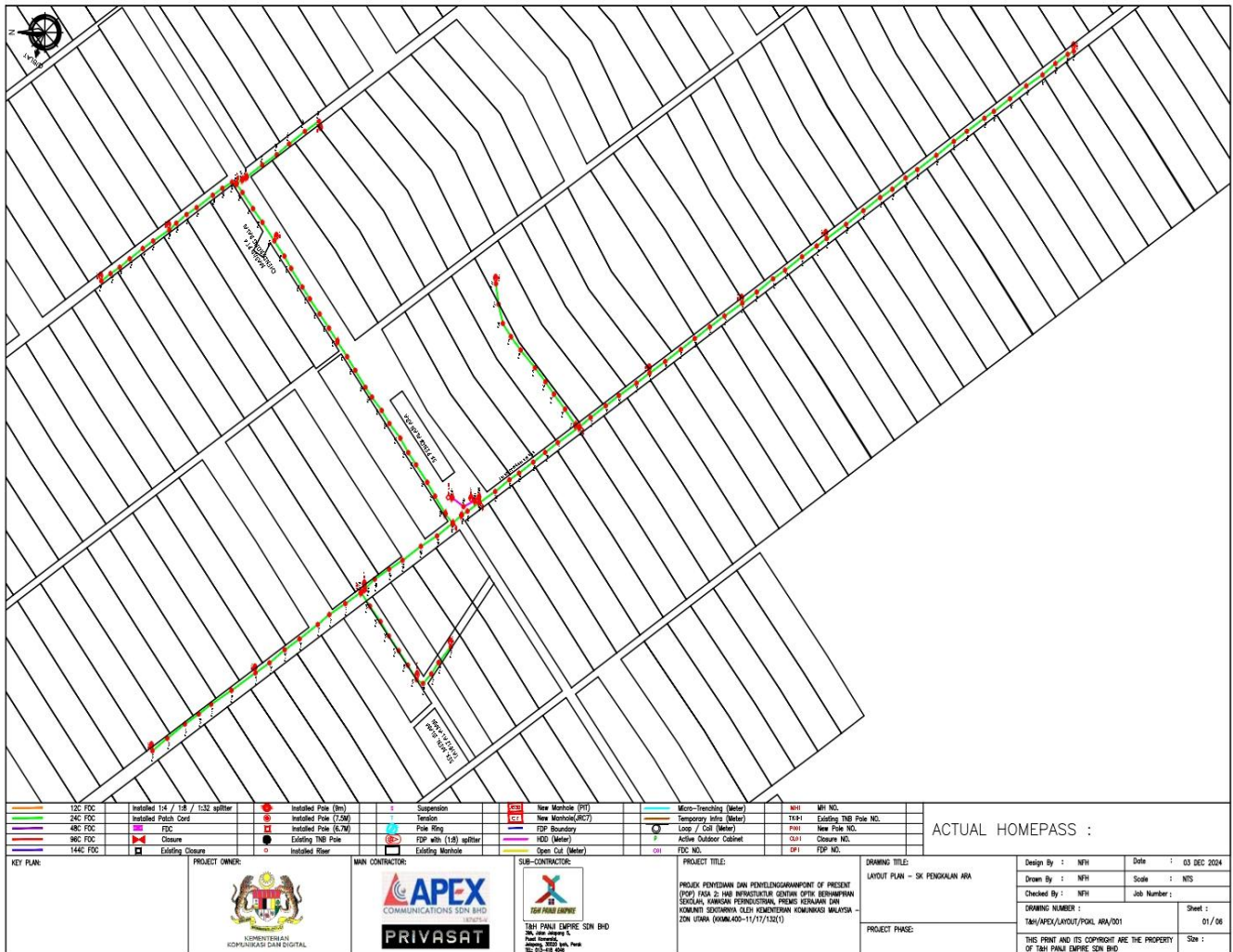




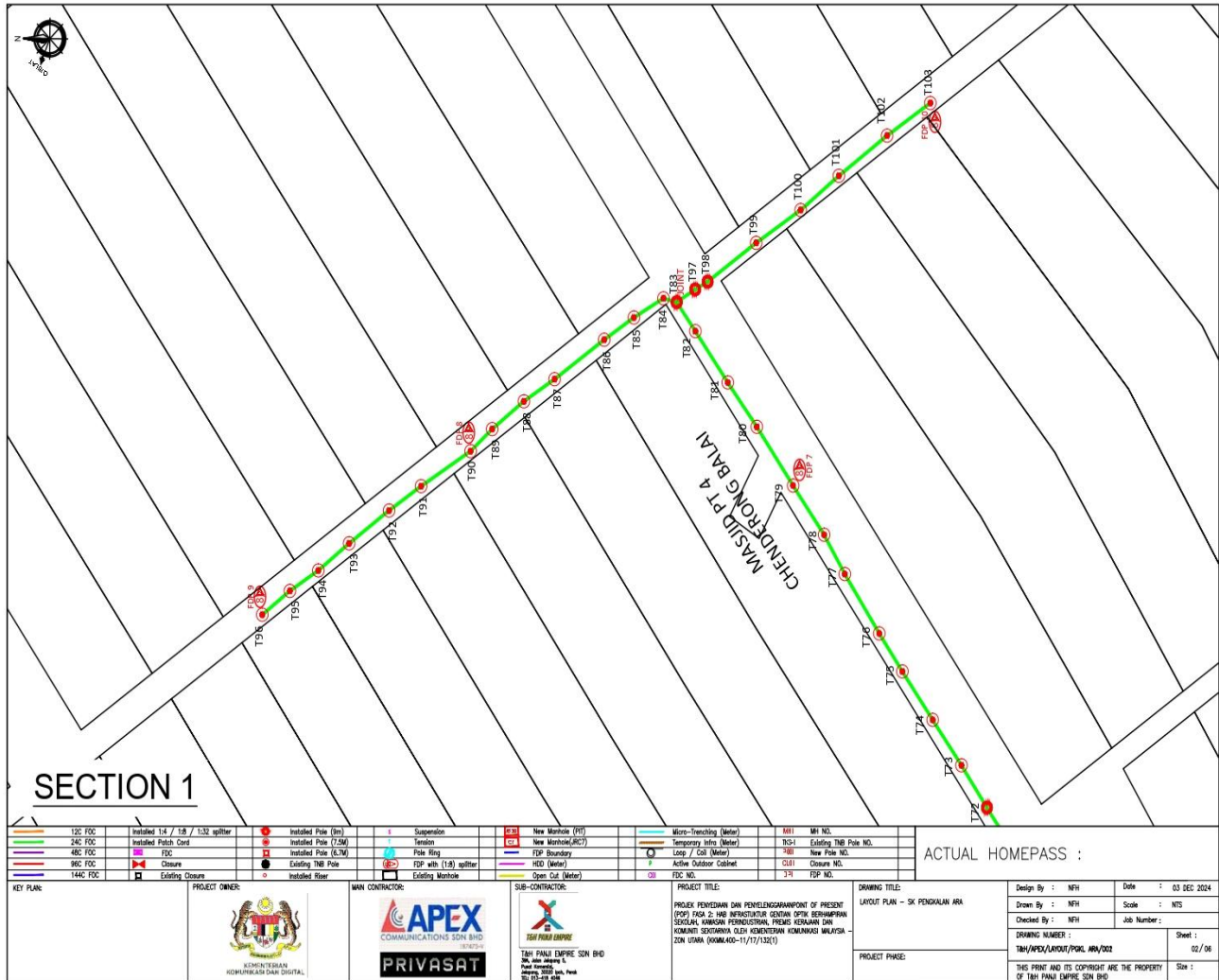
7.0 3rd PARTIES DEPENDENCIES

NO	LOCAL COUNCIL / AUTHORITY	REMARK
1	Majlis Perbandaran Teluk Intan	5000M

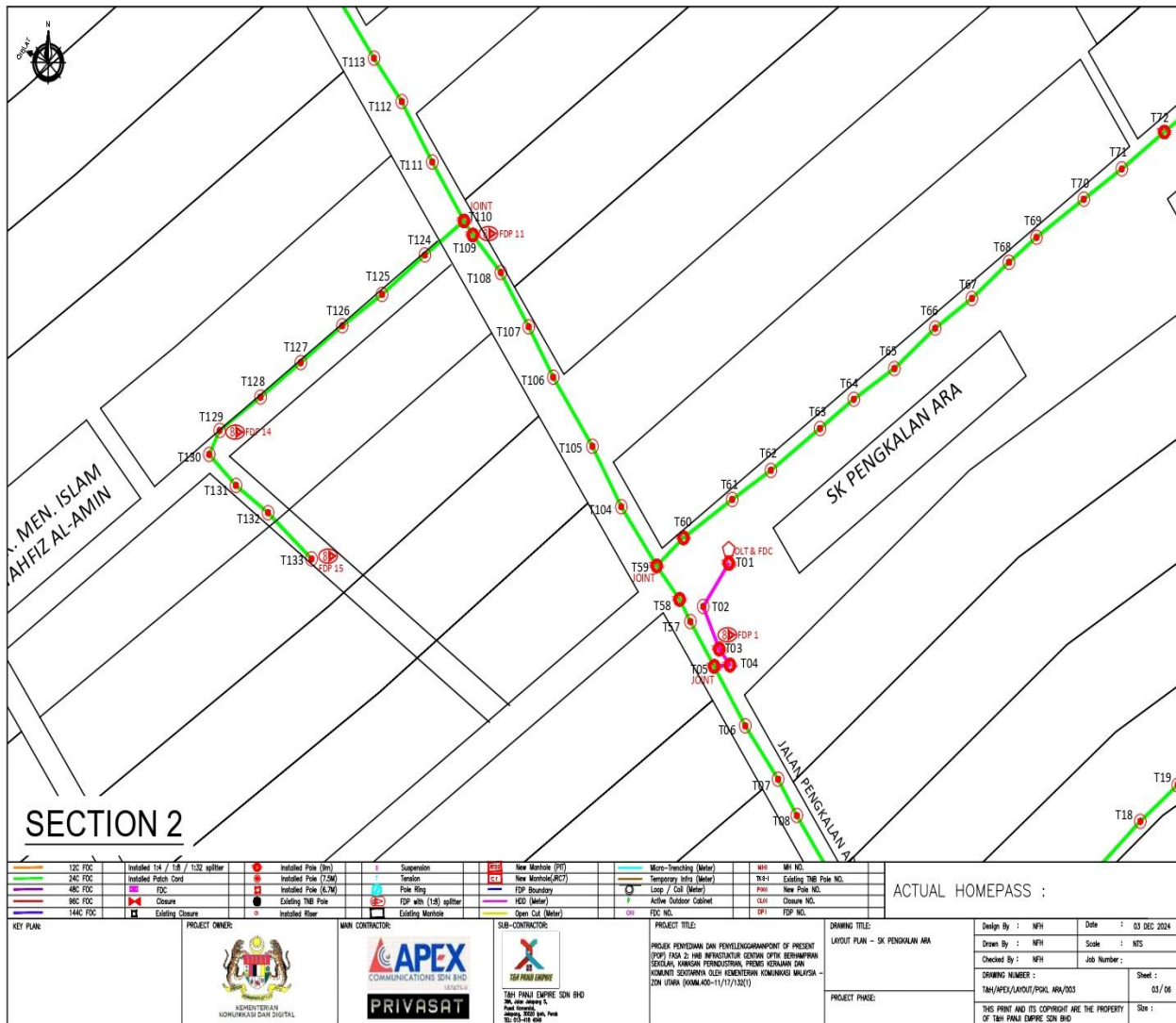
8.0 Drawing
8.1 Layout 1



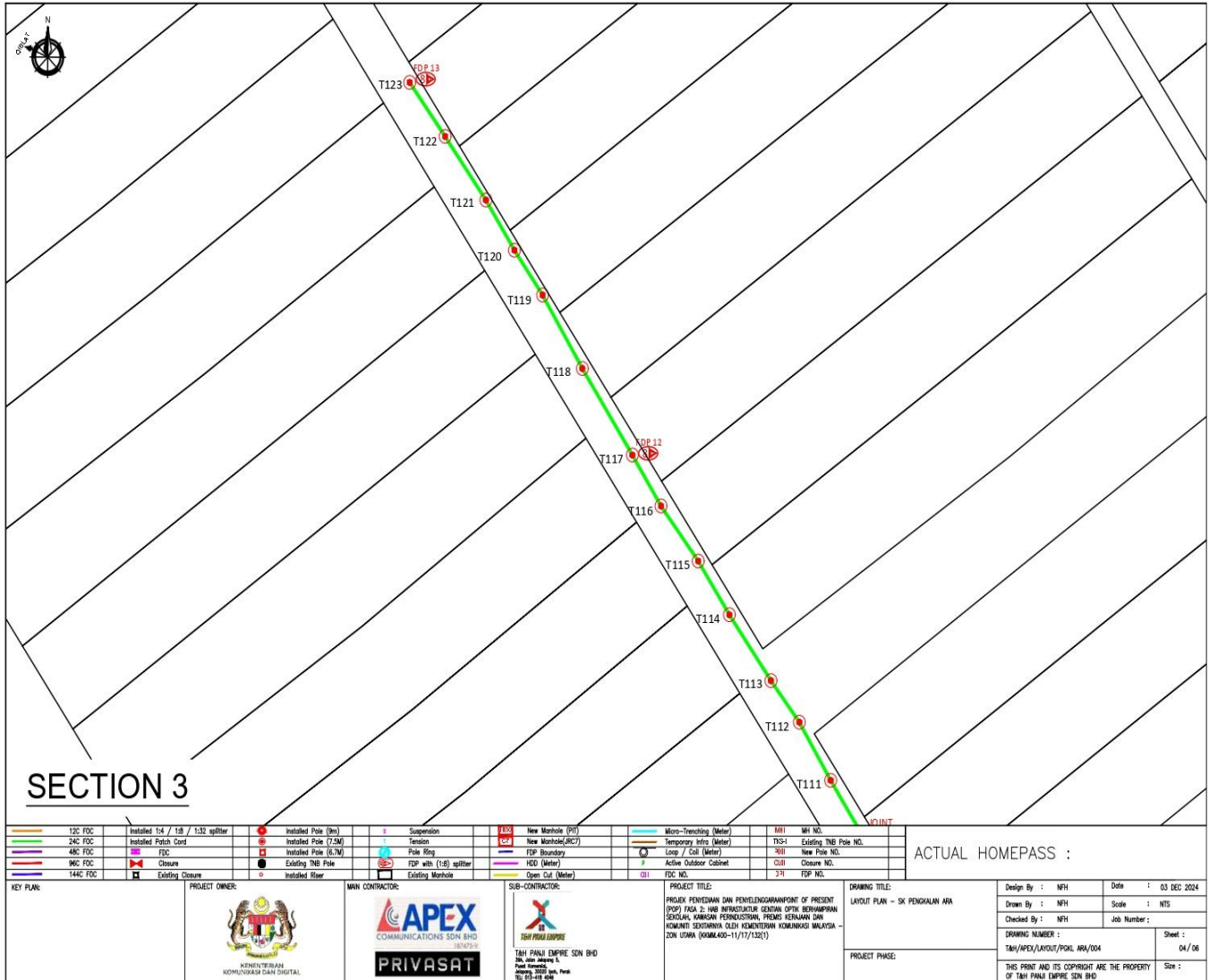
8.2 Layout 1.1



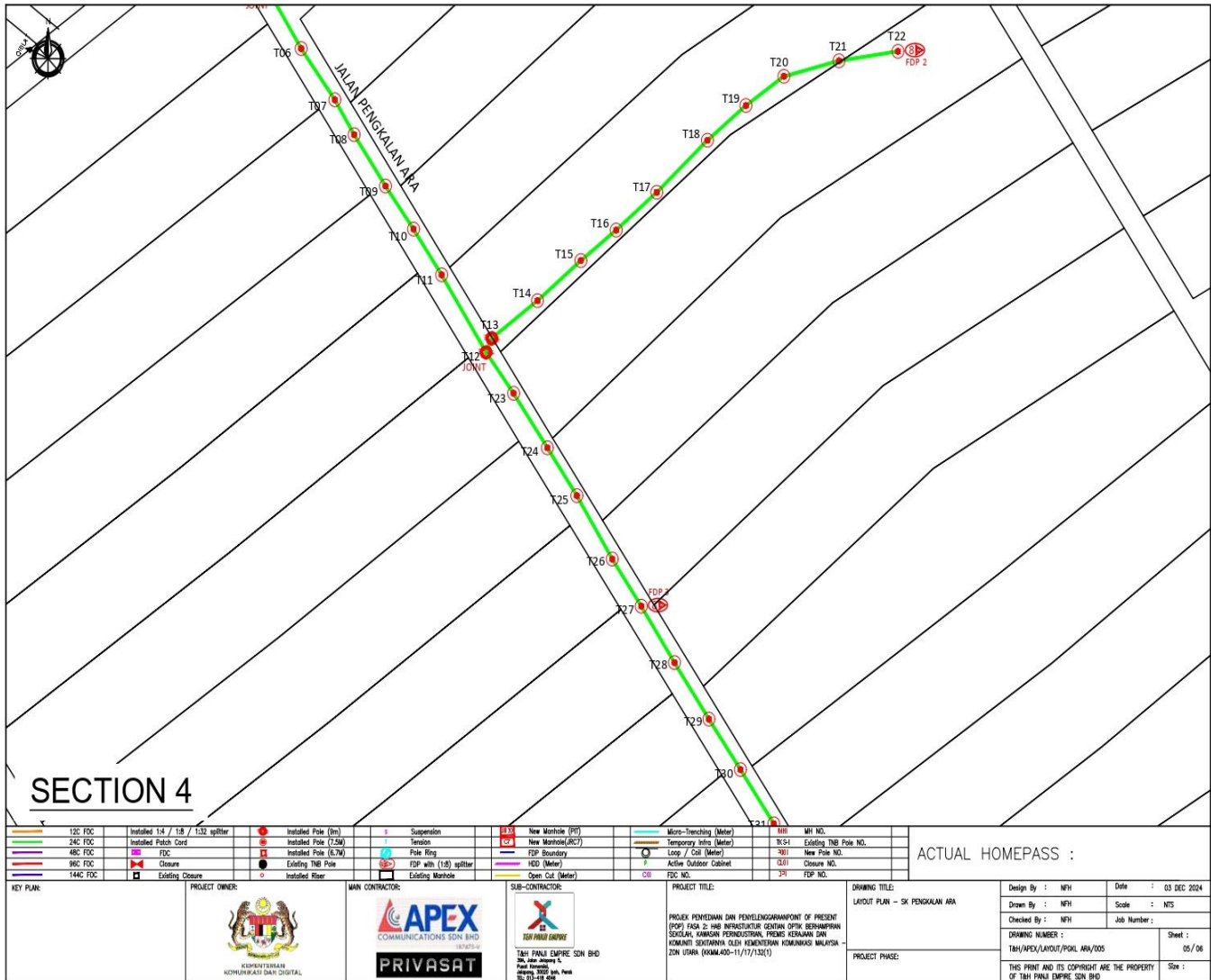
8.3 Layout 1.2



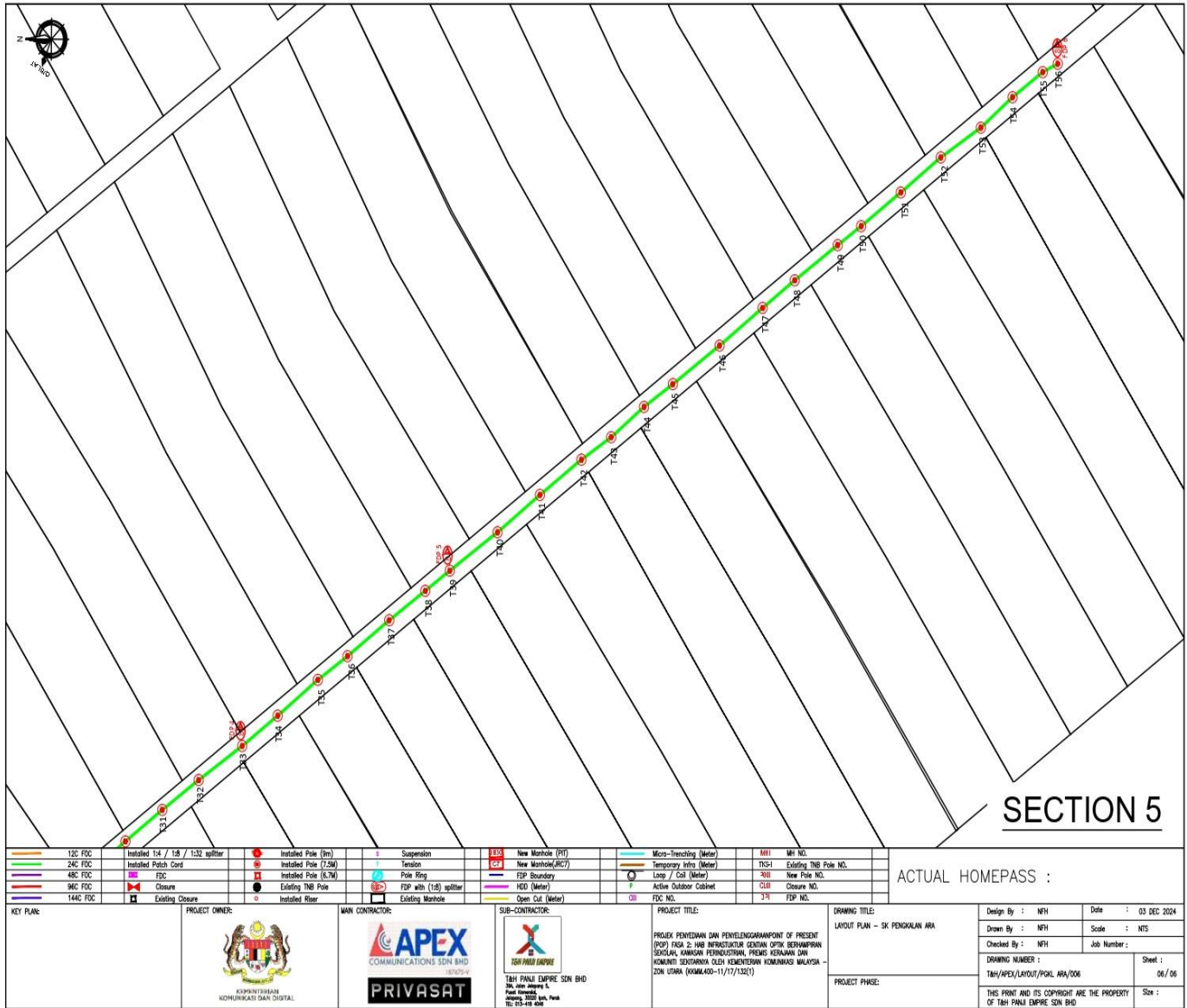
8.4 Layout 1.3



8.5 Layout 1.4



8.6 Layout 1.5



SECTION 5

ACTUAL HOMEPASS :

KEY PLAN:	PROJECT OWNER: KEMENTERIAN KOMUNIKASI DAN DIGITAL	MAIN CONTRACTOR: 	SUB-CONTRACTOR: T&H PANJI EMPIRE SDN BHD 36, Jalan Ampang 5, Pusat Komersial, Jalan 1/102, Kuala Lumpur, 100-000 Kuala Lumpur	PROJECT TITLE: PROJEK PENYEDIAAN DAN PENYELENGGARAAN POINT OF PRESENT (POP) FASA 2: HAB INFRASTRUKTUR GENTIAN OPTIK BERHAMPIRAN DENGAN SEKOLAH, KAWASAN PERINDUSTRIAN, PREMIS KERAJAAN DAN KOMUNITI SEKITARNYA OLEH KEMENTERIAN KOMUNIKASI MALAYSIA - ZON UTARA (KKMM.400-11/17/132(1))	DRAWING TITLE: LAYOUT PLAN - SK PENGALAN ARA	Design By : MFH Date : 03 DEC 2024
					PROJECT PHASE:	Drawn By : MFH Scale : NTS
						Checked By : MFH Job Number :
						DRAWING NUMBER : T&H/APEX/LAYOUT/POKL ARA/006 Sheet : 06 / 06
						THIS PRINT AND ITS COPYRIGHT ARE THE PROPERTY OF T&H PANJI EMPIRE SDN BHD Size :