

TECHNICAL PROPOSAL

POP2 AEA3040 SEKOLAH MENENGAH KEBANGSAAN ALANG ISKANDAR (D-SIDE)

Company Name	:	SEGALA DELIMA (M) SDN BHD
Company Address	:	No. 8, Jalan Ampang Baru 6B, Pusat Perdagangan Baru, 31350 Ipoh, Perak
Prepared By	:	Nasrohaizan Bin Mustaffa
Date	:	3/1/2025



Starting Point

Site / Boundary Name	:	SEKOLAH MENENGAH KEBANGSAAN ALANG ISKANDAR
District	:	BAGAN SERAI
Postcode	:	34300
State	:	PERAK
GPS Coordinate	:	5.014856, 100.527318
LRD	:	A

End Point

Site / Boundary Name	:	TAMAN BAGAN SERAI
Address	:	JALAN PEWIRA
District	:	BAGAN SERAI
Postcode	:	34300
State	:	Perak
GPS Coordinate	:	5.011652, 100.529812
LRD	:	B

1.0 WORK SUMMARY

NO	PROPOSED DISTANCE AND METHOD	UNIT	QUANTITY
1	Horizontal Directional Drilling (HDD)	m	0
2	Carriage Way Open Trench(CW)	m	0
3	Grass Verge Open Trenching (GV)	m	0
4	Micro Trenching (MT)	m	0
Total			0

NO	OTHER INFORMATION	UNIT	QUANTITY
1	Installation of Short Span ADSS Fiber Cables	m	1660
2	Install New Pole	ea	59
3	Install New JRC7 Manhole	ea	0
4	Install GI Riser 100mm	ea	0
5	Install Fiber Distribution Point and Closure (Splicing, Termination and Testing)	ea	15
6	Estimated Time Required for Completion	days	30

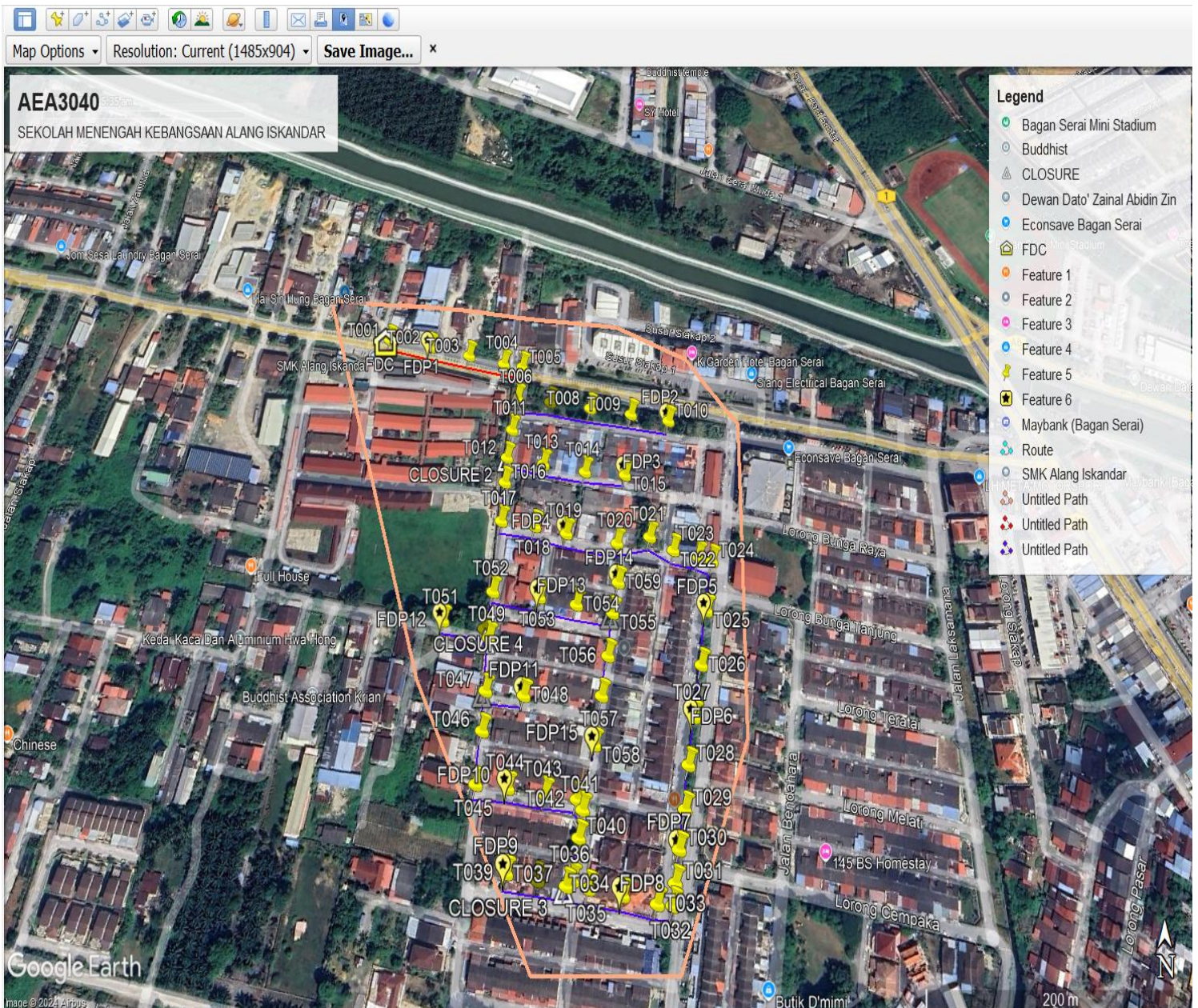
2.0 LOCAL AUTHORITY SUMMARY

Daerah Batu Gajah

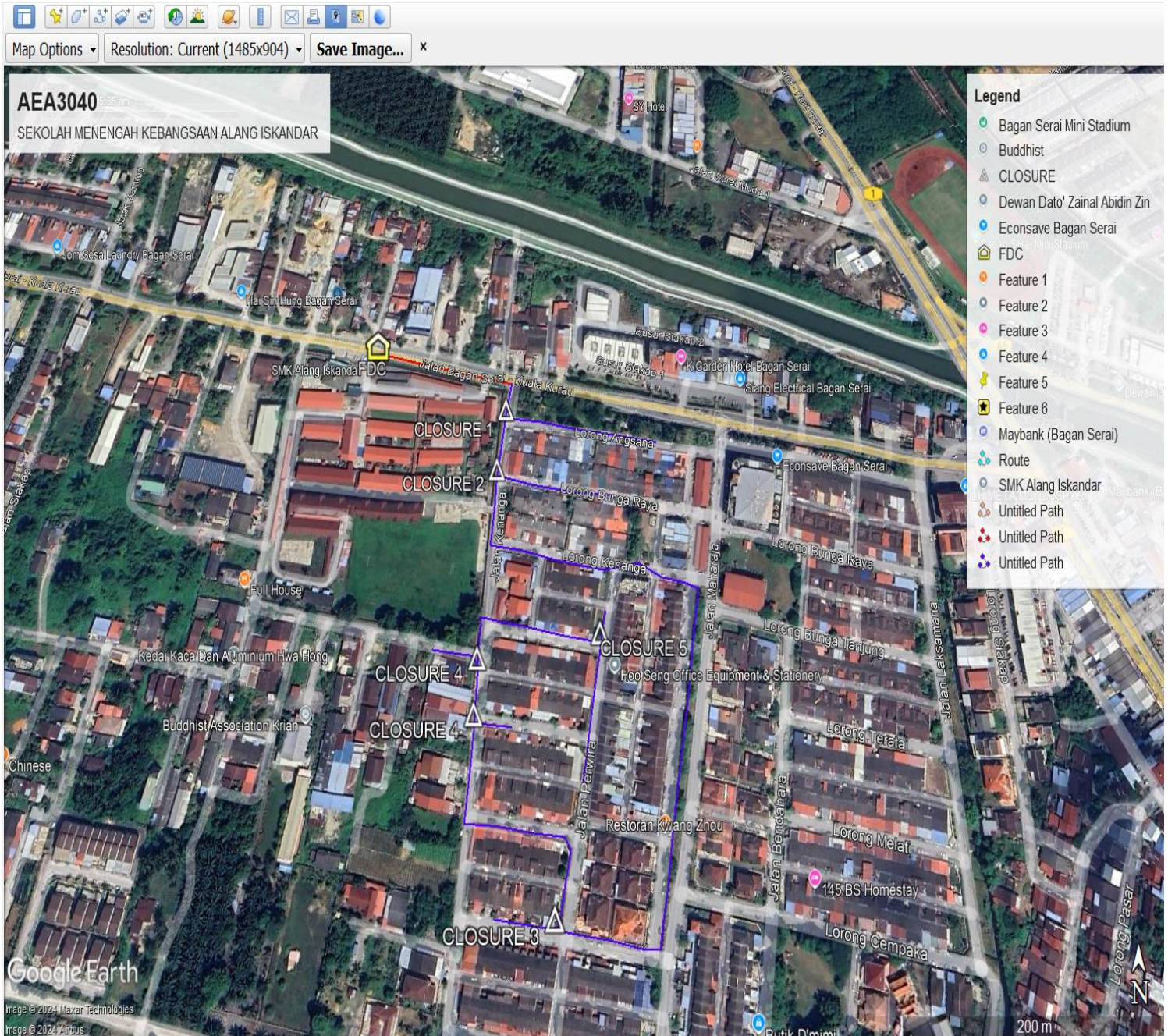
NO	ITEMS	Owner	Quantity	Distance (m)
1	HDD	JKR	-	-
		Majlis	-	-
		Estate / Private Land	-	-
2	New Pole	JKR	5	132
		Majlis	54	1528
		Estate / Private Land	-	-
Total Distance (m)				1660

3.0 SITE PLAN (KMZ)

3.1 Overview Site Area (Propose New Pole)



3.3 Site Plan - KMZ Routing (All Local Authority)



Red Colour - JKR

Road Blue Colour - Majlis Road

4.0 PROPOSED NEW MANHOLE

Proposed New Manhole Coordinate					
No.	Manhole Number	Distance (m)	Latitude	Longitude	Local Authority
1	MH01	-	-	-	-
2	MH02	-	-	-	-

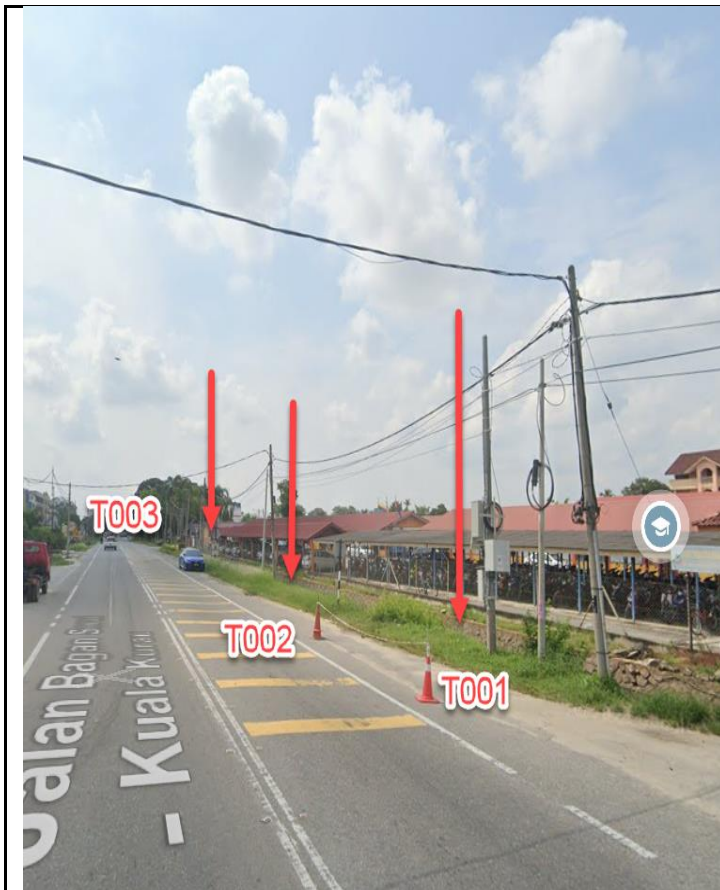
4.1 PROPOSED NEW POLE

Proposed New Pole Coordinate					
No.	Pole Number	Distance (m)	Latitude	Longitude	Local Authority
1	T001	35.00	5.014643	100.528014	Majlis Daerah Kerian
2	T002	35.00	5.014579	100.528370	Majlis Daerah Kerian
3	T003	35.00	5.014518	100.528709	Majlis Daerah Kerian
4	T004	35.00	5.014459	100.529008	Majlis Daerah Kerian
5	T005	35.00	5.014438	100.529170	Majlis Daerah Kerian
6	T006	35.00	5.014187	100.529138	Majlis Daerah Kerian
7	T007	35.00	5.014155	100.529414	Majlis Daerah Kerian
8	T008	35.00	5.014105	100.529751	Majlis Daerah Kerian
9	T009	35.00	5.014053	100.530092	Majlis Daerah Kerian
10	T010	35.00	5.014002	100.530405	Majlis Daerah Kerian
11	T011	35.00	5.013935	100.529102	Majlis Daerah Kerian
12	T012	35.00	5.013720	100.529070	Majlis Daerah Kerian
13	T013	35.00	5.013670	100.529371	JKR Daerah Kerian
14	T014	35.00	5.013616	100.529711	JKR Daerah Kerian
15	T015	35.00	5.013587	100.530038	JKR Daerah Kerian
16	T016	35.00	5.013535	100.529061	JKR Daerah Kerian
17	T017	35.00	5.013255	100.529044	JKR Daerah Kerian
18	T018	35.00	5.013221	100.529315	JKR Daerah Kerian
19	T019	35.00	5.013170	100.529567	JKR Daerah Kerian
20	T020	35.00	5.013097	100.529969	JKR Daerah Kerian
21	T021	35.00	5.013140	100.530228	JKR Daerah Kerian
22	T022	35.00	5.013043	100.530412	JKR Daerah Kerian
23	T023	35.00	5.012989	100.530606	JKR Daerah Kerian
24	T024	35.00	5.012957	100.530709	JKR Daerah Kerian
25	T025	35.00	5.012629	100.530651	JKR Daerah Kerian
26	T026	35.00	5.012284	100.530595	JKR Daerah Kerian
27	T027	35.00	5.011966	100.530526	JKR Daerah Kerian
28	T028	35.00	5.011684	100.530474	JKR Daerah Kerian
29	T029	35.00	5.011430	100.530439	JKR Daerah Kerian
30	T030	35.00	5.011210	100.530389	JKR Daerah Kerian
31	T031	35.00	5.011029	100.530356	JKR Daerah Kerian
32	T032	35.00	5.010910	100.530335	JKR Daerah Kerian
33	T033	35.00	5.010918	100.530228	JKR Daerah Kerian

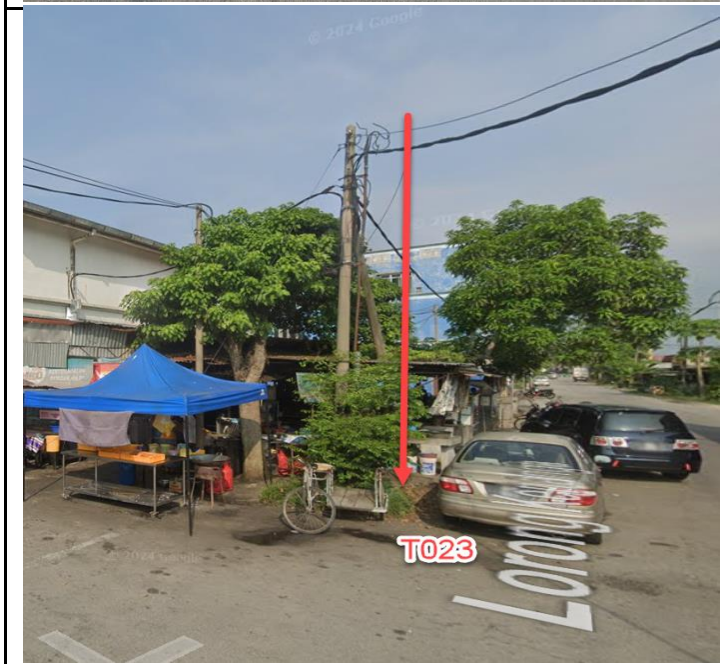
34	T034	35.00	5.010962	100.529991	JKR Daerah Kerian
35	T035	35.00	5.010998	100.529755	JKR Daerah Kerian
36	T036	35.00	5.011040	100.529641	JKR Daerah Kerian
37	T037	35.00	5.011011	100.529602	JKR Daerah Kerian
38	T038	35.00	5.011043	100.529401	JKR Daerah Kerian
39	T039	35.00	5.011080	100.529183	JKR Daerah Kerian
40	T040	35.00	5.011271	100.529685	JKR Daerah Kerian
41	T041	35.00	5.011427	100.529711	JKR Daerah Kerian
42	T042	35.00	5.011487	100.529670	JKR Daerah Kerian
43	T043	35.00	5.011514	100.529441	JKR Daerah Kerian
44	T044	35.00	5.011551	100.529173	JKR Daerah Kerian
45	T045	35.00	5.011572	100.528942	JKR Daerah Kerian
46	T046	35.00	5.011885	100.528970	JKR Daerah Kerian
47	T047	35.00	5.012129	100.528982	JKR Daerah Kerian
48	T048	35.00	5.012099	100.529268	JKR Daerah Kerian
49	T049	35.00	5.012464	100.528988	JKR Daerah Kerian
50	T050	35.00	5.012523	100.528950	JKR Daerah Kerian
51	T051	35.00	5.012568	100.528632	JKR Daerah Kerian
52	T052	35.00	5.012771	100.529003	JKR Daerah Kerian
53	T053	35.00	5.012734	100.529365	JKR Daerah Kerian
54	T054	35.00	5.012680	100.529652	JKR Daerah Kerian
55	T055	35.00	5.012627	100.529932	JKR Daerah Kerian
56	T056	35.00	5.012349	100.529895	JKR Daerah Kerian
57	T057	35.00	5.012099	100.529846	JKR Daerah Kerian
58	T058	35.00	5.011803	100.529795	JKR Daerah Kerian
59	T059	35.00	5.012828	100.529976	JKR Daerah Kerian

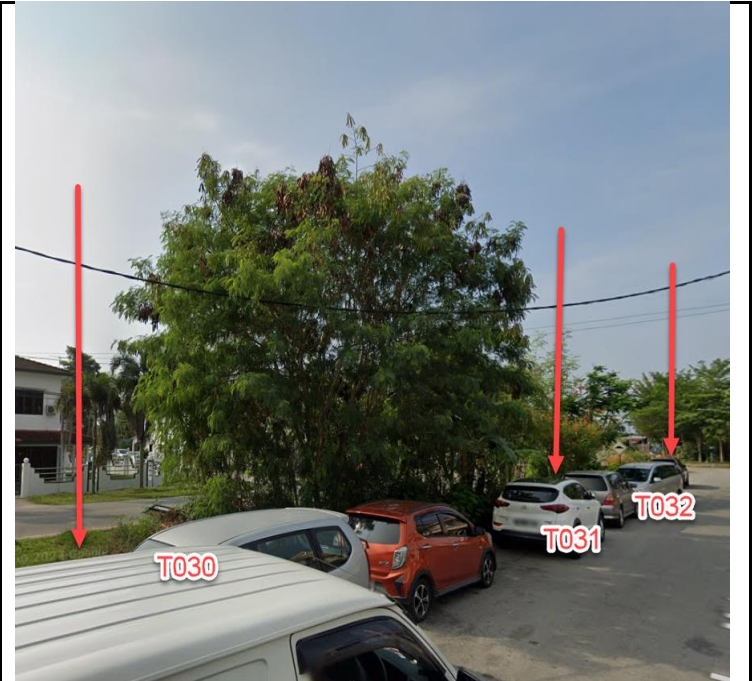
5.0 SITE PHOTOS - PROPOSED HDD AND NEW MANHOLE(N/A)

6.0 SITE PHOTOS - PROPOSED NEW POLE

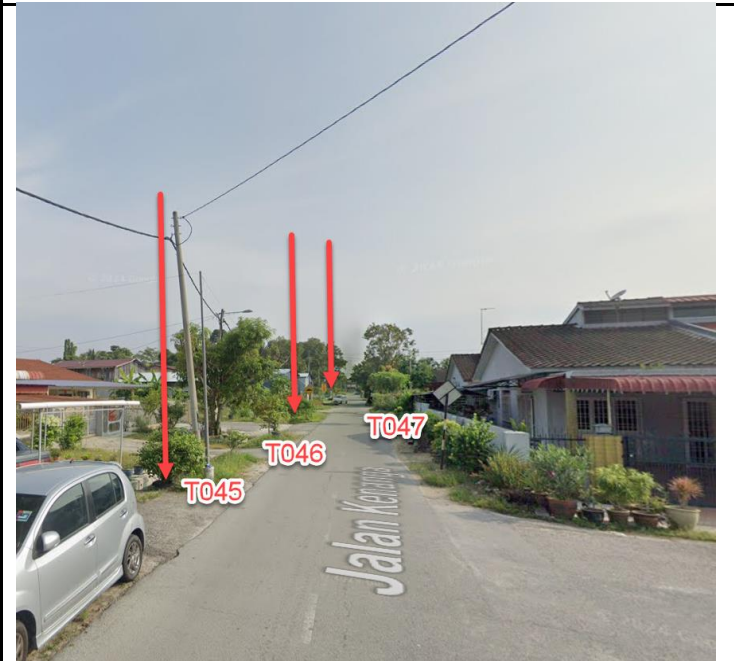


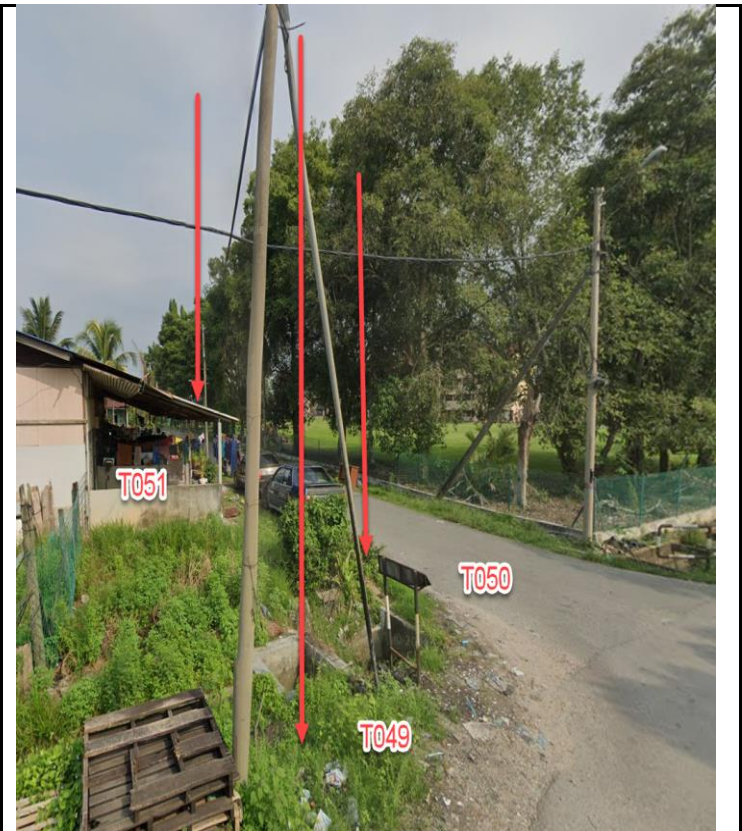


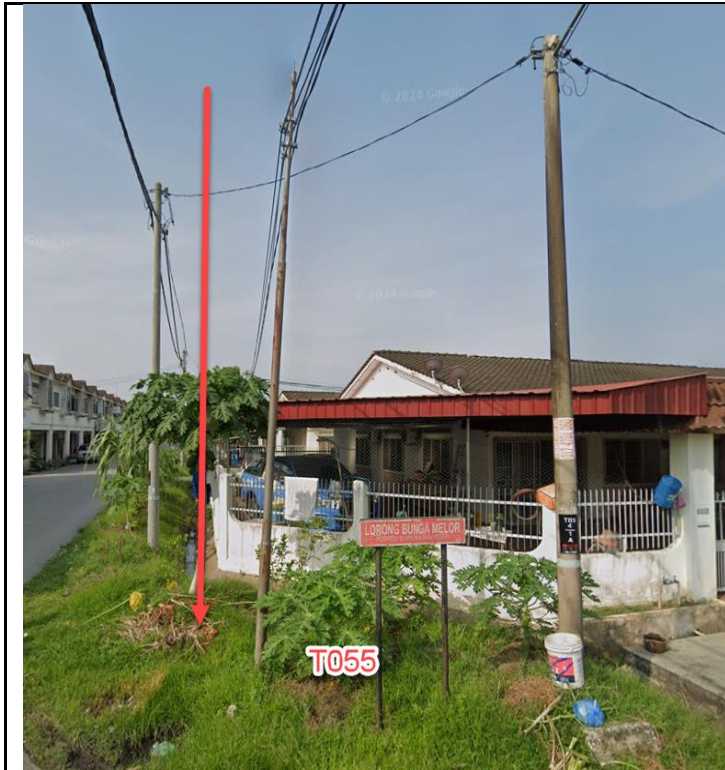












NO	LOCAL COUNCIL / AUTHORITY	REMARK
1	Majlis Daerah Kerian	1528m
2	JKR Daerah Kerian	132m

