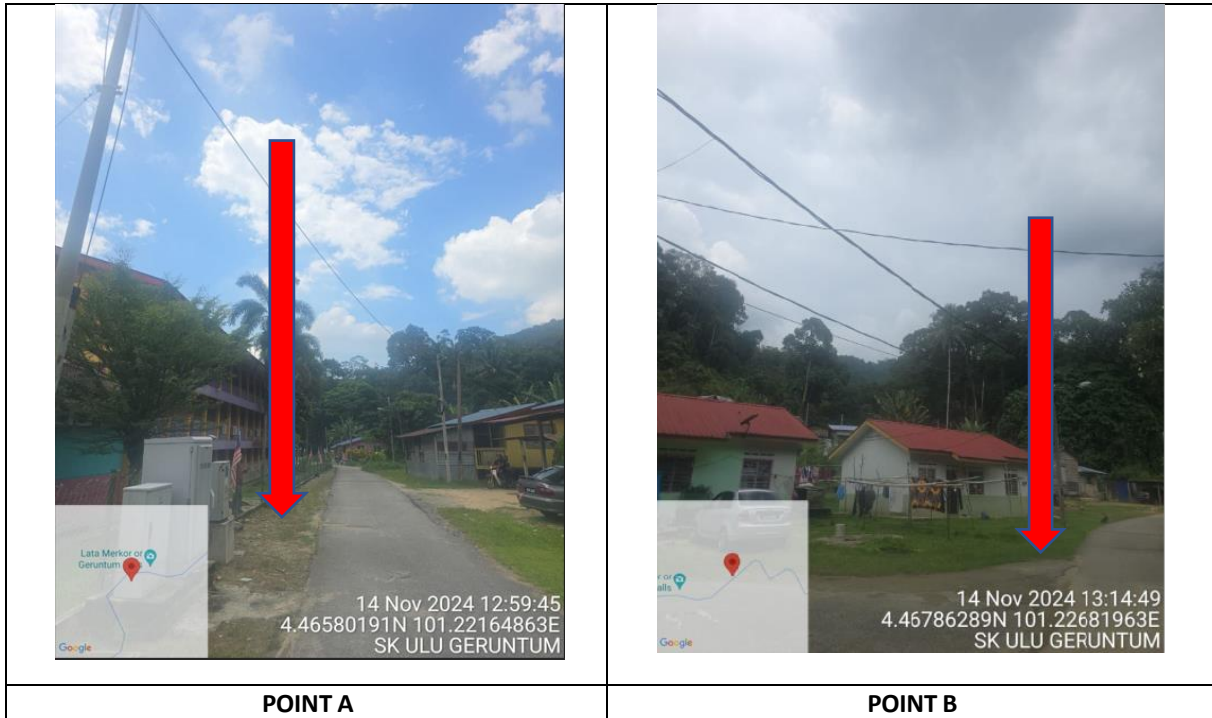


TECHNICAL PROPOSAL

POP2 ABA 9012 SEKOLAH KEBANGSAAN ULU GERUNTUM (D-SIDE)

Company Name :	WCWL Communication Sdn Bhd
Company Address :	No 127 Jalan PUJ 3/3, Taman Puncak Jalil, Bandar Putra Permai 43300 Selangor
Prepared By :	Ramdan
Date :	13 Nov 2024



Starting Point

Site / Boundary Name	: SEKOLAH KEBANGSAAN ULU GERUNTUM
Address	: Kg Ulu Geruntum
District	: Kampar
Postcode	: 31600
State	: Perak
GPS Coordinate	: 4.465806, 101.221583
LRD	: A

End Point

Site / Boundary Name	: SEKOLAH KEBANGSAAN ULU GERUNTUM
Address	: Kg Ulu Geruntum
District	: Gopeng, Kampar
Postcode	: 31600
State	: Perak
GPS Coordinate	: 4.468490, 101.226708
LRD	: B

Work Summary

No	Proposed Distance and Method	Unit	Qty
1	Horizontal Directional Drilling (HDD)	m	0
2	Carriage Way Open trench (CW)	m	0
3	Grass Verge Open Trenching (GV)	m	0
4	Micro trenching (MT)	m	0
	Total		0

	Other Information	Unit	Qty
1	Proposed Manhole	EA	0
2	Proposed Pole	EA	83
3	Joint Closure	EA	4
4	Estimated time required for completion	days	90

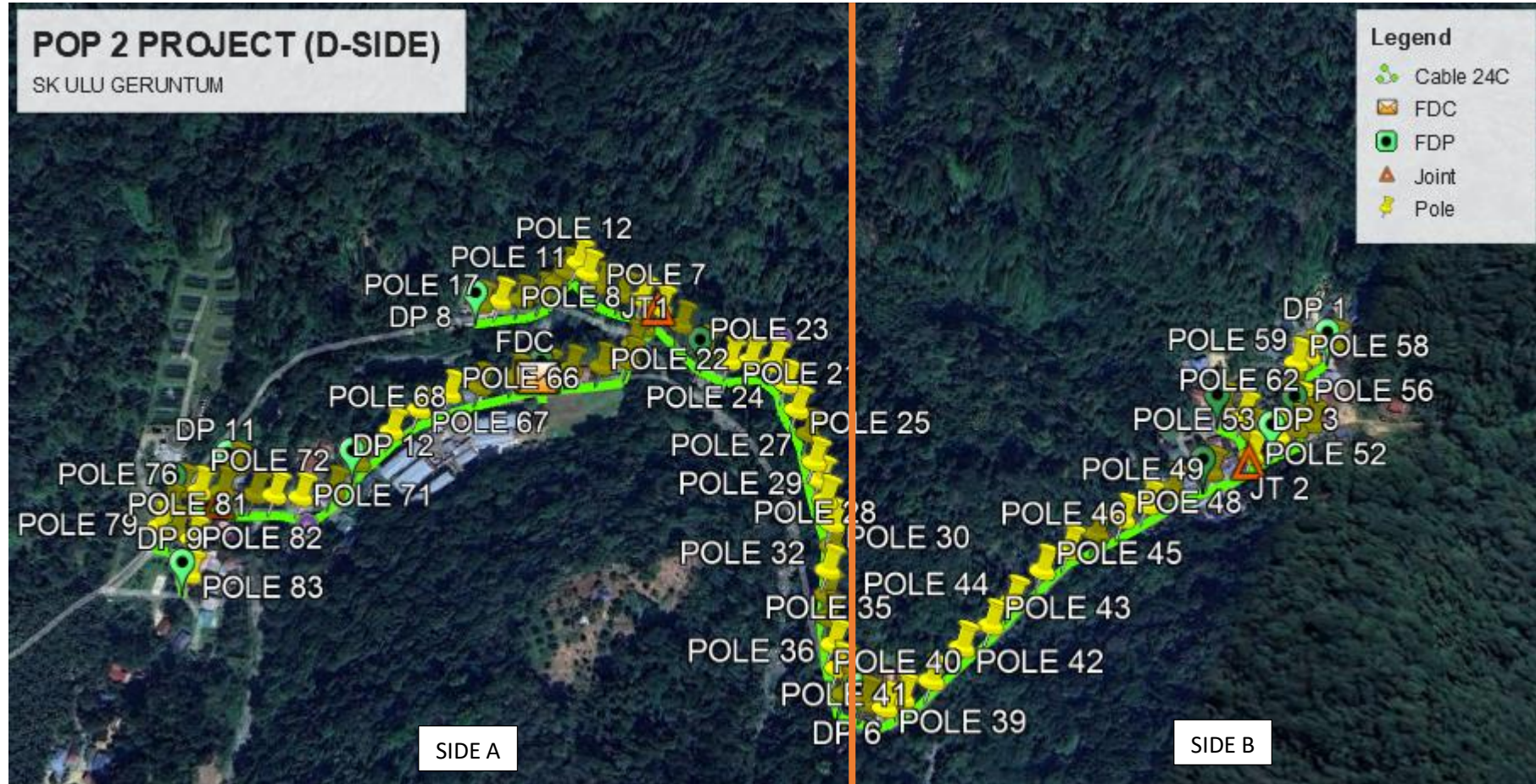
Local Authority Summary

1. Daerah Kampar

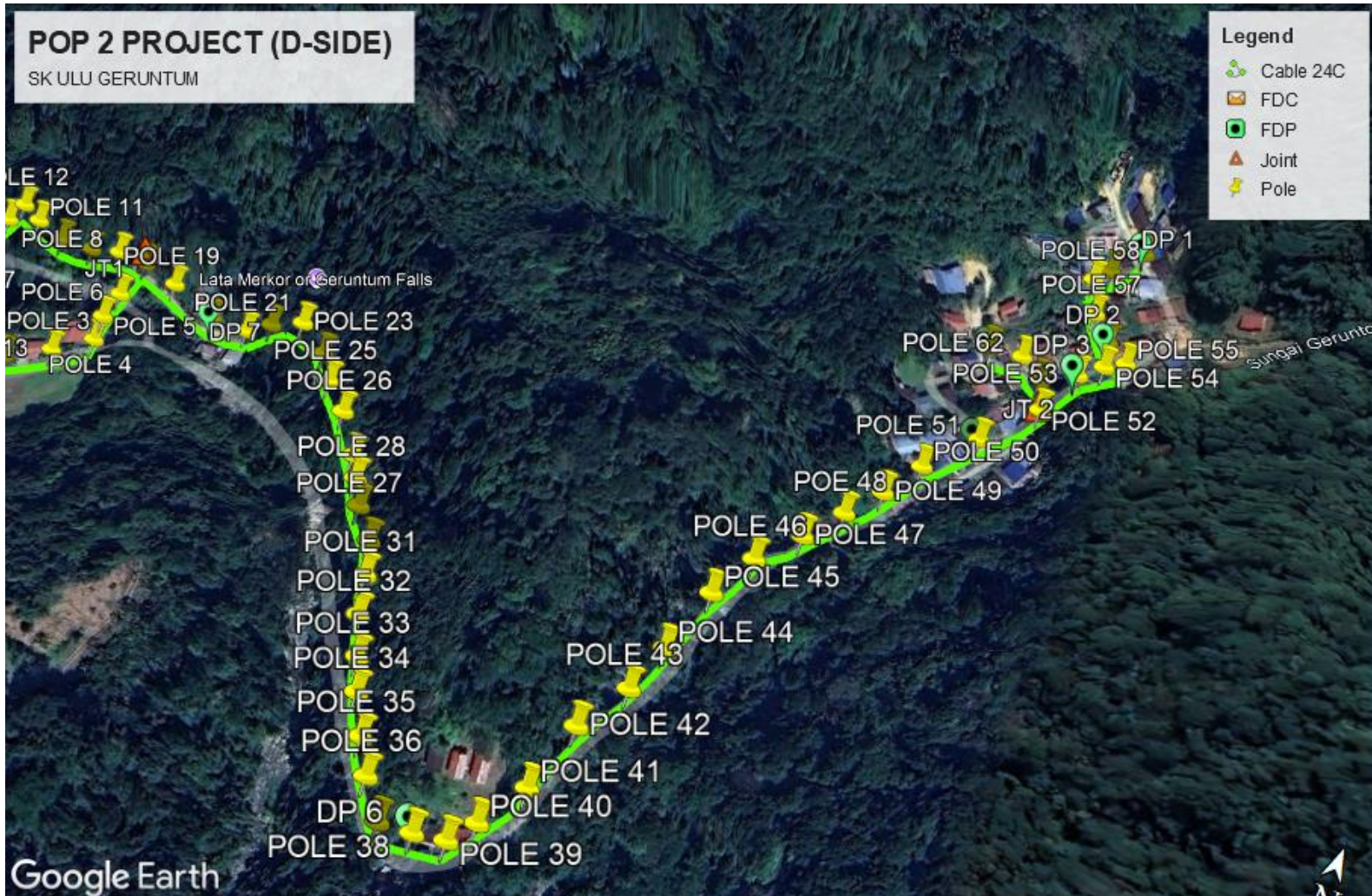
Bil	Items	Owner	Quantity	Distance
1	HDD	JKR	-	-
		Majlis	-	-
		Estate / Private Land	-	-
2	New Pole	JKR	-	-
		Majlis	83	3300m
		Estate / Private Land	-	-
3	Existing TNB Pole	JKR	-	-
		Majlis	-	-
		Estate / Private Land	-	-
Total				3300m

Site Plan – KMZ (Overview site area)

Proposed Cable and New Pole



SIDE B



Site Plan – KMZ Routing (All Local Authority)

SIDE A



Route Blue Colour – Majlis Daerah Kampar

SIDE B



Route Blue Colour – Majlis Daerah Kampar

Prop New Pole Lat & Long Table

PROPOSED POLE COORDINATE		
POLE NUMBER	LATITUDE	LONGITUDE
T 001	4.465801090	101.221595350
T 002	4.465902668	101.221737491
T 003	4.466025538	101.221932516
T 004	4.466147632	101.222106277
T 005	4.466282698	101.222064329
T 006	4.466429911	101.222066797
T 007	4.466600377	101.222132369
T 008	4.466608711	101.221969370
T 009	4.466583762	101.221807488
T 010	4.466568309	101.221647776
T 011	4.466586155	101.221521100
T 012	4.466616576	101.221430921
T 013	4.466526265	101.221381800
T 014	4.466444989	101.221325883
T 015	4.466332927	101.221246973
T 016	4.466230134	101.221124514
T 017	4.466144069	101.220989911
T 018	4.466054859	101.220871750
T 019	4.466558790	101.222327130
T 020	4.466497242	101.222562585
T 021	4.466484214	101.222774998
T 022	4.466508766	101.222935430
T 023	4.466536276	101.223117571
T 024	4.466458253	101.223260015
T 025	4.466258969	101.223446731
T 026	4.466114861	101.223615956
T 027	4.465968165	101.223736152
T 028	4.465835550	101.223843447
T 029	4.465697694	101.223952942
T 030	4.465573339	101.224071172
T 031	4.465419059	101.224145557
T 032	4.465262952	101.224193895
T 033	4.465119193	101.224257468
T 034	4.464971715	101.224346496
T 035	4.464813910	101.224459409
T 036	4.464678641	101.224562911
T 037	4.464547605	101.224680396
T 038	4.464561595	101.224826301
T 039	4.464586945	101.224965727
T 040	4.464695081	101.225043073
T 041	4.464889906	101.225169450
T 042	4.465163614	101.225258223
T 043	4.465415663	101.225366408
T 044	4.465636417	101.225428559
T 045	4.465899441	101.225521323
T 046	4.466122479	101.225620092
T 047	4.466363820	101.225751120

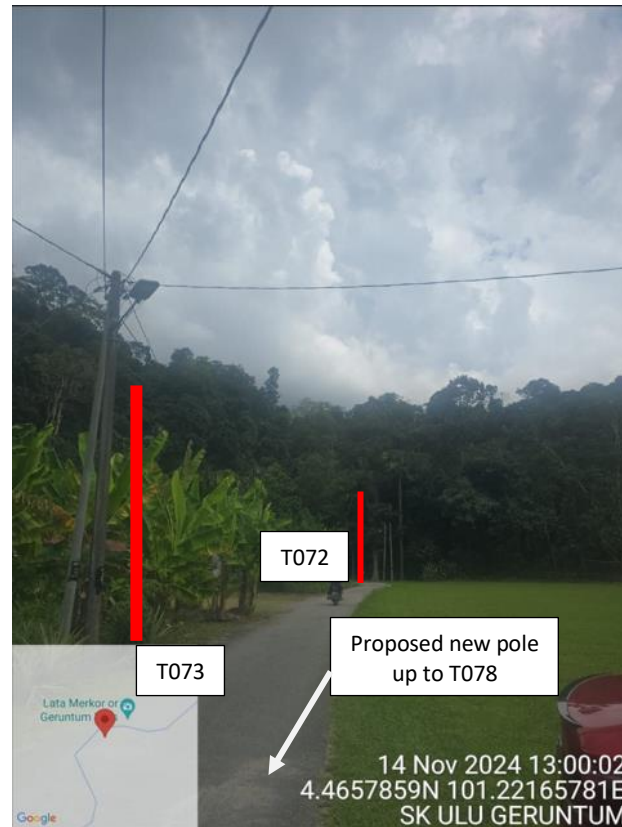
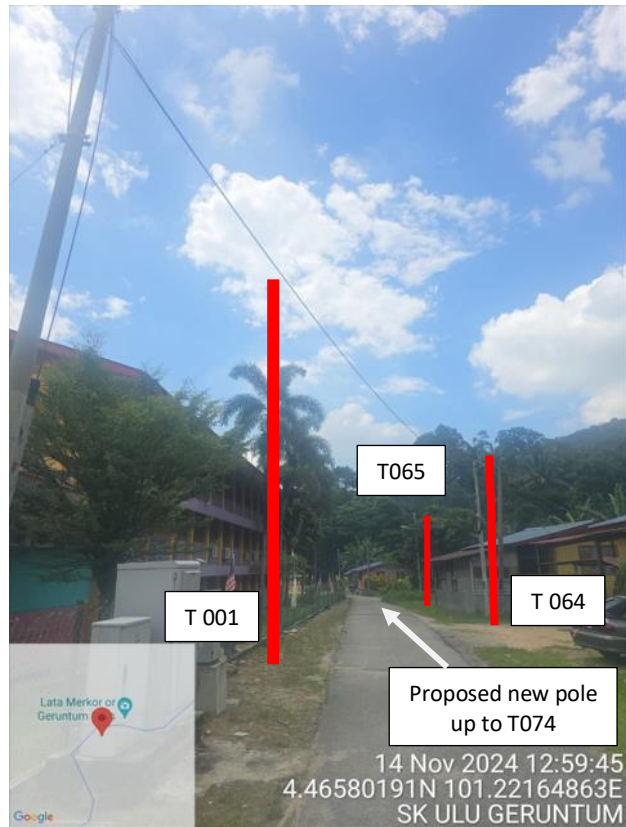
PROPOSED POLE COORDINATE		
POLE NUMBER	LATITUDE	LONGITUDE
T 048	4.466560225	101.225872693
T 049	4.466762978	101.225986941
T 050	4.466959231	101.226101806
T 051	4.467203646	101.226294432
T 052	4.467405087	101.226501839
T 053	4.467568629	101.226602558
T 054	4.467721484	101.226704771
T 055	4.467861210	101.226796333
T 056	4.467953654	101.226686167
T 057	4.468086934	101.226583713
T 058	4.468226588	101.226522734
T 059	4.468327344	101.226586315
T 060	4.468490210	101.226707539
T 061	4.467573880	101.226451293
T 062	4.467703622	101.226338682
T 063	4.467704402	101.226177647
T 064	4.465659128	101.221399776
T 065	4.465474565	101.221204773
T 066	4.465316642	101.221034020
T 067	4.465108892	101.220894379
T 068	4.464872143	101.220803311
T 069	4.464549731	101.220715225
T 070	4.464278167	101.220665935
T 071	4.464130879	101.220480125
T 072	4.464055712	101.220302993
T 073	4.463996071	101.220171481
T 074	4.463911577	101.219945141
T 075	4.464112695	101.219920401
T 076	4.463834068	101.219801854
T 077	4.463789644	101.219670909
T 078	4.463624657	101.219675264
T 079	4.463478029	101.219694545
T 080	4.463503485	101.219817110
T 081	4.463503738	101.219955803
T 082	4.463393379	101.219995650
T 083	4.463272227	101.220080709

Overall Manhole & Pole (Propose New & Existing)

No.	Pole & Manhole ID	Distance	Latitude	Longitude	Local Authority
1	T 001	0	4.465801090	101.221595350	Majlis Daerah Kampar
2	T 002	20	4.465902668	101.221737491	Majlis Daerah Kampar
3	T 003	25	4.466025538	101.221932516	Majlis Daerah Kampar
4	T 004	23	4.466147632	101.222106277	Majlis Daerah Kampar
5	T 005	18	4.466282698	101.222064329	Majlis Daerah Kampar
6	T 006	20	4.466429911	101.222066797	Majlis Daerah Kampar
7	T 007	18	4.466600377	101.222132369	Majlis Daerah Kampar
8	T 008	18	4.466608711	101.221969370	Majlis Daerah Kampar
9	T 009	18	4.466583762	101.221807488	Majlis Daerah Kampar
10	T 010	19	4.466568309	101.221647776	Majlis Daerah Kampar
11	T 011	15	4.466586155	101.221521100	Majlis Daerah Kampar
12	T 012	15	4.466616576	101.221430921	Majlis Daerah Kampar
13	T 013	15	4.466526265	101.221381800	Majlis Daerah Kampar
14	T 014	15	4.466444989	101.221325883	Majlis Daerah Kampar
15	T 015	20	4.466332927	101.221246973	Majlis Daerah Kampar
16	T 016	25	4.466230134	101.221124514	Majlis Daerah Kampar
17	T 017	20	4.466144069	101.220989911	Majlis Daerah Kampar
18	T 018	20	4.466054859	101.220871750	Majlis Daerah Kampar
19	T 019	25	4.466558790	101.222327130	Majlis Daerah Kampar
20	T 020	30	4.466497242	101.222562585	Majlis Daerah Kampar
21	T 021	25	4.466484214	101.222774998	Majlis Daerah Kampar
22	T 022	20	4.466508766	101.222935430	Majlis Daerah Kampar
23	T 023	25	4.466536276	101.223117571	Majlis Daerah Kampar
24	T 024	18	4.466458253	101.223260015	Majlis Daerah Kampar
25	T 025	32	4.466258969	101.223446731	Majlis Daerah Kampar
26	T 026	25	4.466114861	101.223615956	Majlis Daerah Kampar
27	T 027	25	4.465968165	101.223736152	Majlis Daerah Kampar
28	T 028	18	4.465835550	101.223843447	Majlis Daerah Kampar
29	T 029	25	4.465697694	101.223952942	Majlis Daerah Kampar
30	T 030	20	4.465573339	101.224071172	Majlis Daerah Kampar
31	T 031	22	4.465419059	101.224145557	Majlis Daerah Kampar
32	T 032	20	4.465262952	101.224193895	Majlis Daerah Kampar
33	T 033	20	4.465119193	101.224257468	Majlis Daerah Kampar
34	T 034	20	4.464971715	101.224346496	Majlis Daerah Kampar
35	T 035	22	4.464813910	101.224459409	Majlis Daerah Kampar
36	T 036	20	4.464678641	101.224562911	Majlis Daerah Kampar
37	T 037	20	4.464547605	101.224680396	Majlis Daerah Kampar
38	T 038	20	4.464561595	101.224826301	Majlis Daerah Kampar
39	T 039	15	4.464586945	101.224965727	Majlis Daerah Kampar
40	T 040	15	4.464695081	101.225043073	Majlis Daerah Kampar
41	T 041	25	4.464889906	101.225169450	Majlis Daerah Kampar
42	T 042	35	4.465163614	101.225258223	Majlis Daerah Kampar
43	T 043	37	4.465415663	101.225366408	Majlis Daerah Kampar
44	T 044	25	4.465636417	101.225428559	Majlis Daerah Kampar
45	T 045	38	4.465899441	101.225521323	Majlis Daerah Kampar
46	T 046	25	4.466122479	101.225620092	Majlis Daerah Kampar
47	T 047	30	4.466363820	101.225751120	Majlis Daerah Kampar
48	T 048	25	4.466560225	101.225872693	Majlis Daerah Kampar

No.	Pole & Manhole ID	Distance	Latitude	Longitude	Local Authority
49	T 049	30	4.466762978	101.225986941	Majlis Daerah Kampar
50	T 050	25	4.466959231	101.226101806	Majlis Daerah Kampar
51	T 051	36	4.467203646	101.226294432	Majlis Daerah Kampar
52	T 052	30	4.467405087	101.226501839	Majlis Daerah Kampar
53	T 053	25	4.467568629	101.226602558	Majlis Daerah Kampar
54	T 054	15	4.467721484	101.226704771	Majlis Daerah Kampar
55	T 055	25	4.467861210	101.226796333	Majlis Daerah Kampar
56	T 056	15	4.467953654	101.226686167	Majlis Daerah Kampar
57	T 057	20	4.468086934	101.226583713	Majlis Daerah Kampar
58	T 058	15	4.468226588	101.226522734	Majlis Daerah Kampar
59	T 059	15	4.468327344	101.226586315	Majlis Daerah Kampar
60	T 060	22	4.468490210	101.226707539	Majlis Daerah Kampar
61	T 061	20	4.467573880	101.226451293	Majlis Daerah Kampar
62	T 062	25	4.467703622	101.226338682	Majlis Daerah Kampar
63	T 063	20	4.467704402	101.226177647	Majlis Daerah Kampar
64	T 064	25	4.465659128	101.221399776	Majlis Daerah Kampar
65	T 065	35	4.465474565	101.221204773	Majlis Daerah Kampar
66	T 066	30	4.465316642	101.221034020	Majlis Daerah Kampar
67	T 067	30	4.465108892	101.220894379	Majlis Daerah Kampar
68	T 068	30	4.464872143	101.220803311	Majlis Daerah Kampar
69	T 069	40	4.464549731	101.220715225	Majlis Daerah Kampar
70	T 070	30	4.464278167	101.220665935	Majlis Daerah Kampar
71	T 071	35	4.464130879	101.220480125	Majlis Daerah Kampar
72	T 072	25	4.464055712	101.220302993	Majlis Daerah Kampar
73	T 073	25	4.463996071	101.220171481	Majlis Daerah Kampar
74	T 074	25	4.463911577	101.219945141	Majlis Daerah Kampar
75	T 075	30	4.464112695	101.219920401	Majlis Daerah Kampar
76	T 076	25	4.463834068	101.219801854	Majlis Daerah Kampar
77	T 077	15	4.463789644	101.219670909	Majlis Daerah Kampar
78	T 078	25	4.463624657	101.219675264	Majlis Daerah Kampar
79	T 079	20	4.463478029	101.219694545	Majlis Daerah Kampar
80	T 080	18	4.463503485	101.219817110	Majlis Daerah Kampar
81	T 081	20	4.463503738	101.219955803	Majlis Daerah Kampar
82	T 082	15	4.463393379	101.219995650	Majlis Daerah Kampar
83	T 083	20	4.463272227	101.220080709	Majlis Daerah Kampar

Site Photos – Proposed Pole 7.5m

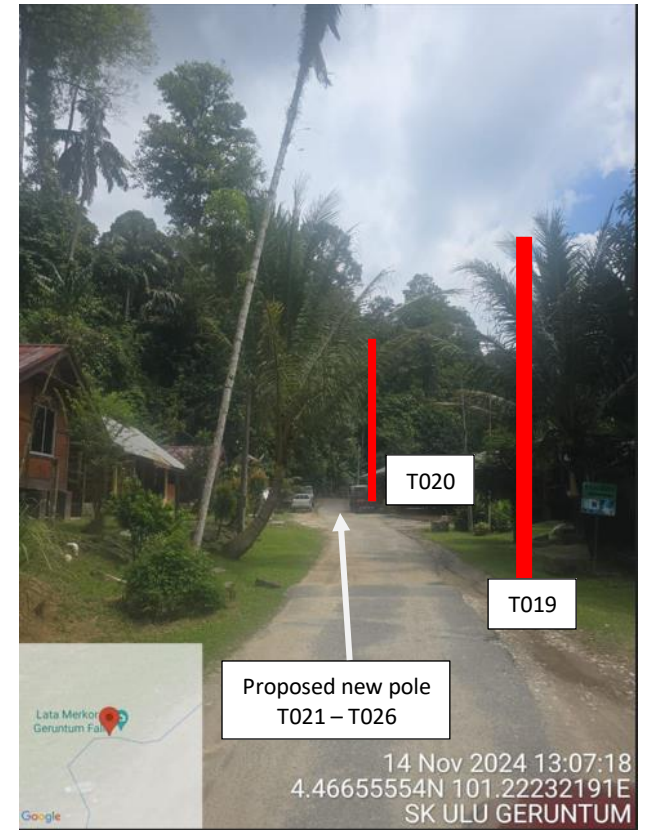




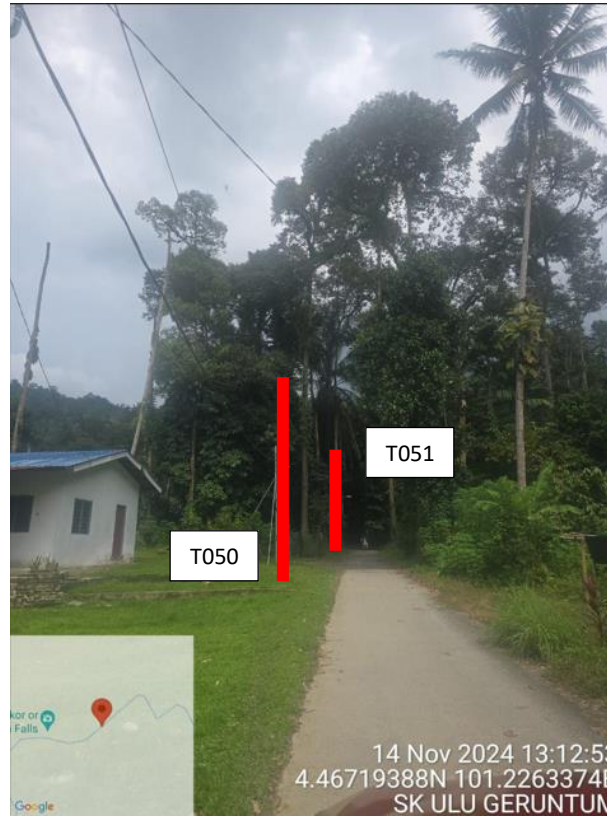
PROJEK PENYEDIAAN DAN PENYELENGGARAAN POINT OF PRESENCE (POP)
FASA 2 : HAB INFRASTRUKTUR GENTIAN OPTIK BERHAMPIRAN DENGAN
SEKOLAH, KAWASAN PERINDUSTRIAN, PREMIS KERAJAAN DAN KOMUNITI
SEKITARNYA OLEH KEMENTERIAN KOMUNIKASI MALAYSIA – ZON UTARA
(KKMM.400-11/17/132(1))



Site Photos – Proposed Pole 7.5m



Site Photos – Proposed Pole 7.5m



Site Photos – Proposed Pole 7.5m

