

TECHNICAL PROPOSAL

POP2 AEA7002 SEKOLAH MENENGAH KEBANGSAAN BERSIA (FELDA) (D-SIDE)

Company Name : WabTech Sdn Bhd
Company Address : 101-1, Jalan Metro Sendayan, 71950 Seremban, Negeri Sembilan.
Prepared By : Sharifful Bahrin bin Che Meh
Date : 23/1/2025



Starting Point

Site / Boundary Name : Sekolah Menengah Kebangsaan Bersia (Felda)
Address : Felda Bersia, 33320 Gerik, Perak
District : Gerik
Postcode : 33320
State : Perak
GPS Coordinate : 5.475230, 101.205648
LRD : A

End Point

Site / Boundary Name : Felda Bersia
Address : Jalan Bongor, Felda Bersia, 33320 Gerik, Perak
District : Gerik
Postcode : 33320
State : Perak
GPS Coordinate : 5.474185, 101.198485
LRD : B



PROJEK PENYEDIAAN DAN PENYELENGGARAAN POINT OF PRESENCE (POP)
FASA 2: HAB INFRASTRUTUK GENTIAN OPTIK BERHAMPIRAN DENGAN
SEKOLAH, KAWASAN PERINDUSTRIAN, PREMIS KERAJAAN DAN KOMUNITI
SEKITARNYA OLEH KEMENTERIAN KOMUNIKASI MALAYSIA – ZON UTARA
(KKMM.400-11/17/132(1))



WRBTECH SDN BHD
ESTABLISHED 2011

1.0 WORK SUMMARY

NO	PROPOSED DISTANCE AND METHOD	UNIT	QUANTITY
1	Horizontal Directional Drilling (HDD)	m	0
2	Carriage Way Open Trench (CW)	m	0
3	Grass Verge Open Trenching (GV)	m	0
4	Micro Trenching (MT)	m	0
Total			

NO	OTHER INFORMATION	UNIT	QUANTITY
1	Installation of Short Span ADSS Fibre Cables	m	3451
2	Install New Pole	ea	71
3	Install New JRC7 Manhole	ea	0
4	Install GI Riser 100mm	ea	0
5	Install Fiber Distribution Point and Closure (Splicing, Termination and Testing)	ea	17
6	Estimated Time Required for Completion	days	30



PROJEK PENYEDIAAN DAN PENYELENGGARAAN POINT OF PRESENCE (POP)
FASA 2: HAB INFRASTRUTUK GENTIAN OPTIK BERHAMPIRAN DENGAN
SEKOLAH, KAWASAN PERINDUSTRIAN, PREMIS KERAJAAN DAN KOMUNITI
SEKITARNYA OLEH KEMENTERIAN KOMUNIKASI MALAYSIA – ZON UTARA
(KKMM.400-11/17/132(1))



WABTECH SDN BHD
1508087-X

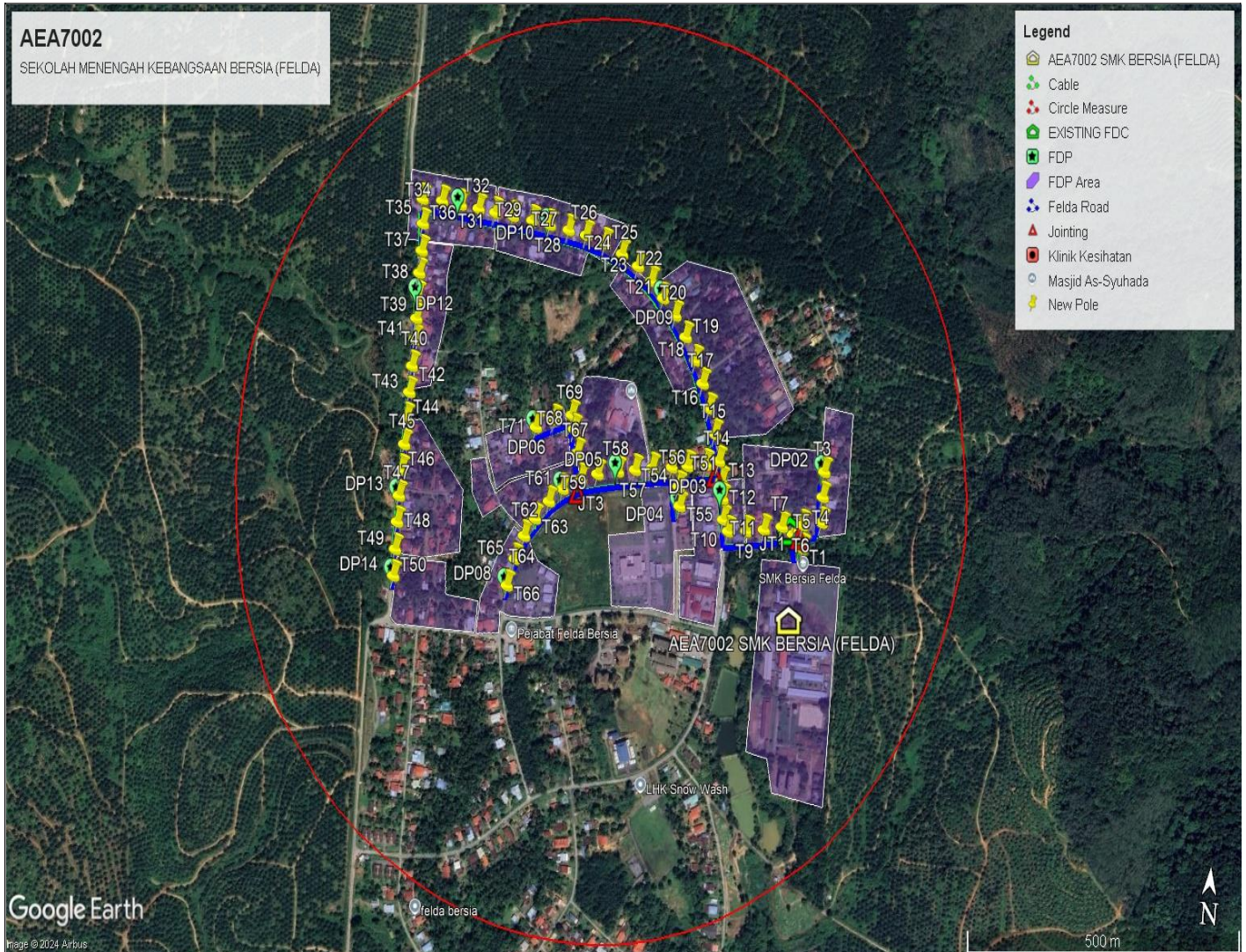
2.0 LOCAL AUTHORITY SUMMARY

Daerah Gerik

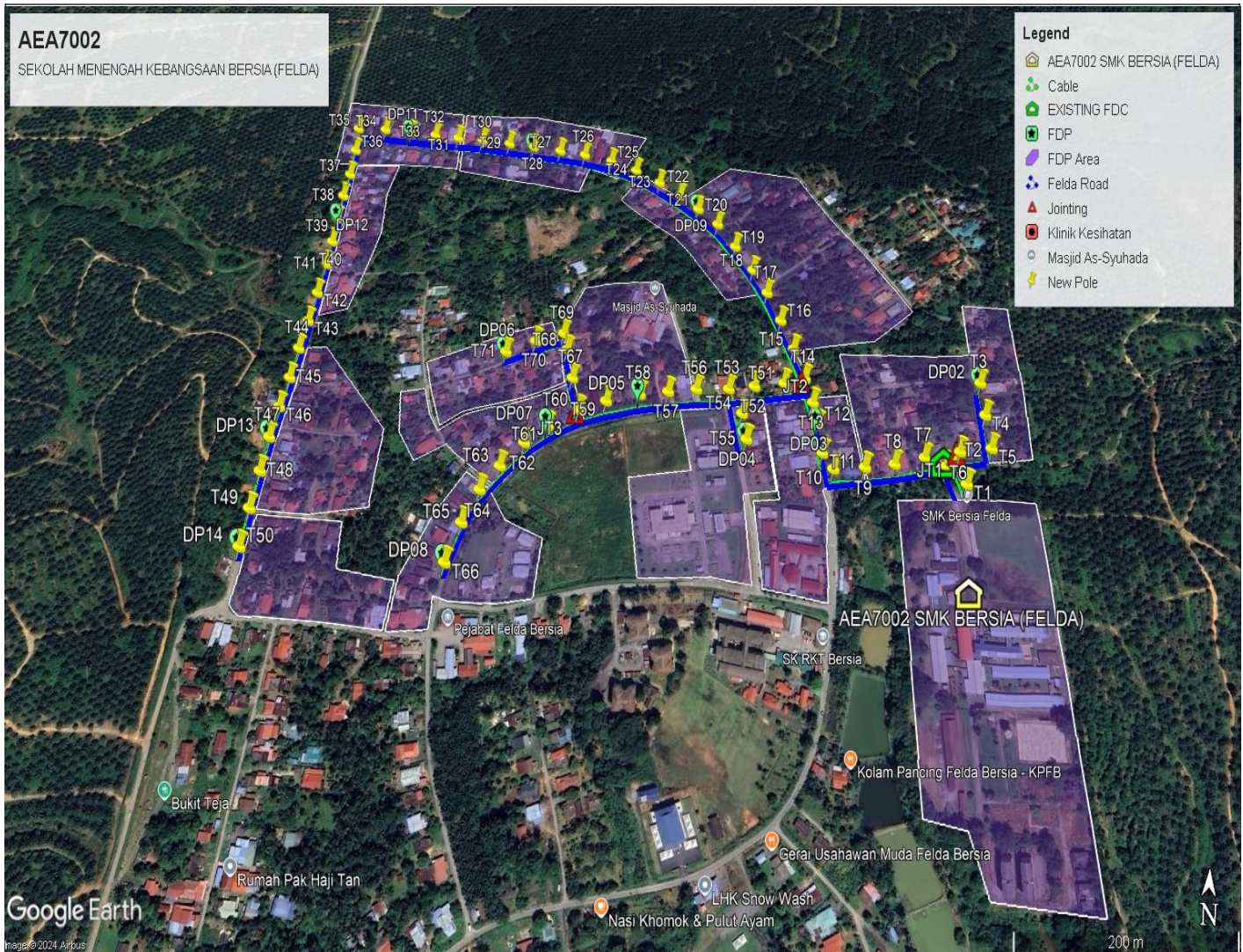
NO	ITEMS	Owner	Quantity	Distance (m)
1	HDD	JKR	-	-
		Felda	-	-
		PDT	-	-
2	New Pole	JKR	-	-
		Felda	71	2531
		PDT	-	-
Total Distance (m)				2531

3.0 SITE PLAN (KMZ)

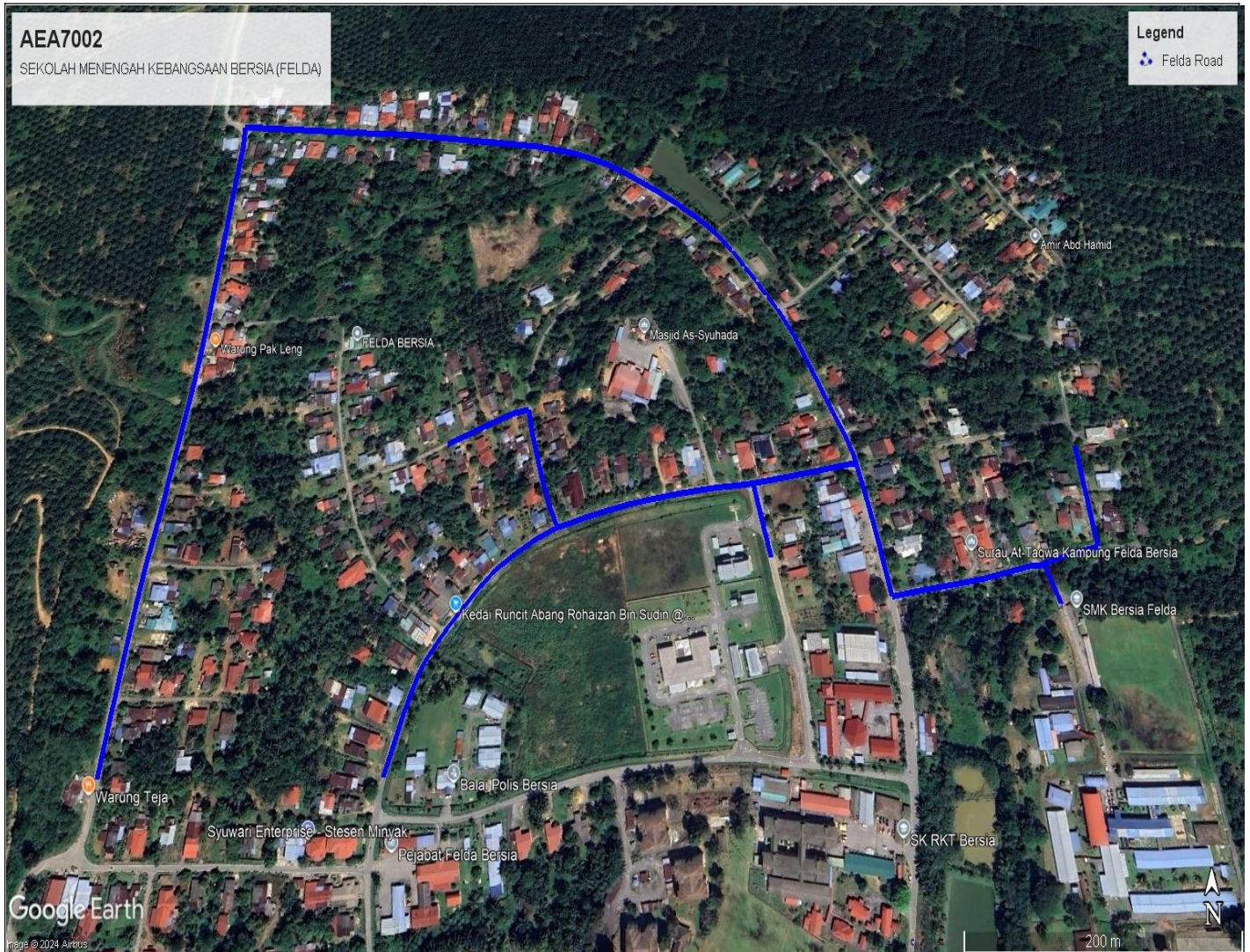
3.1 Overview Site Area



3.2 Site boundary



3.3 Road Boundary

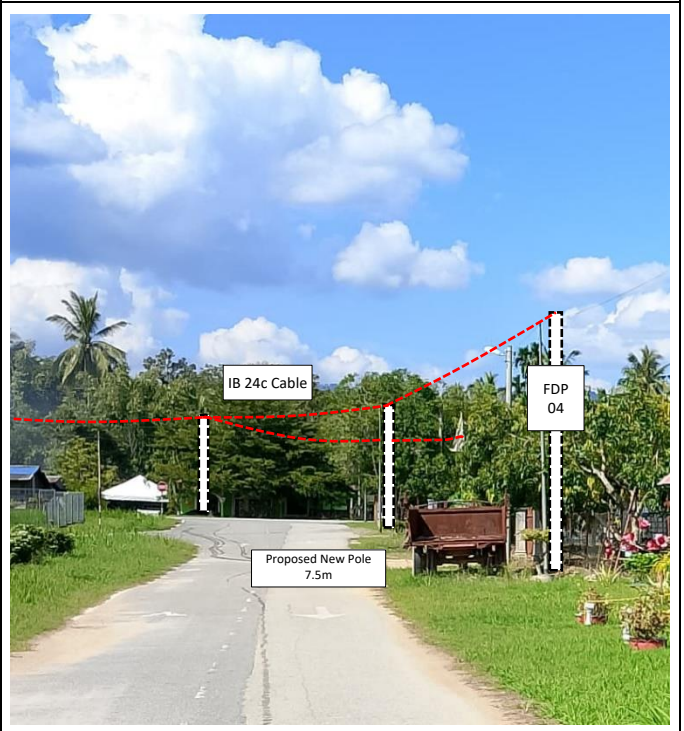
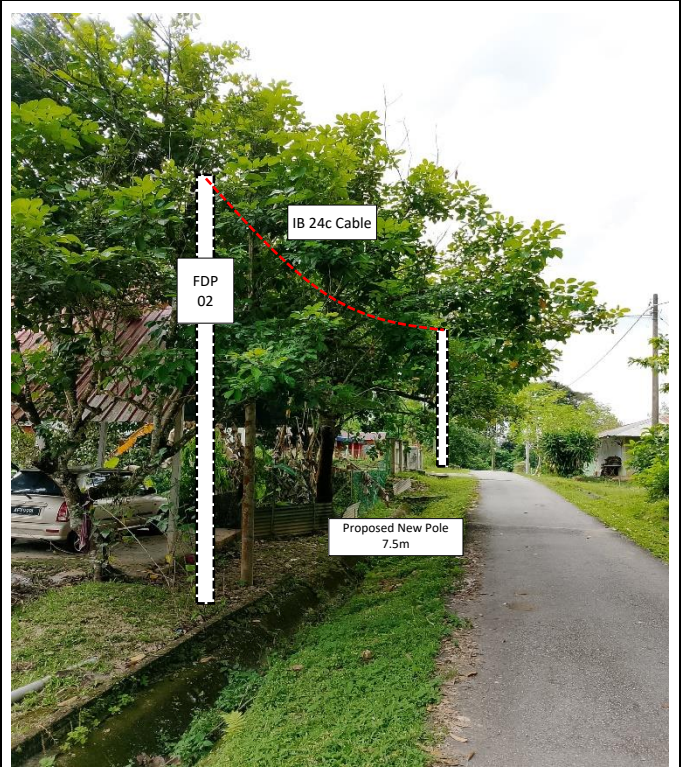


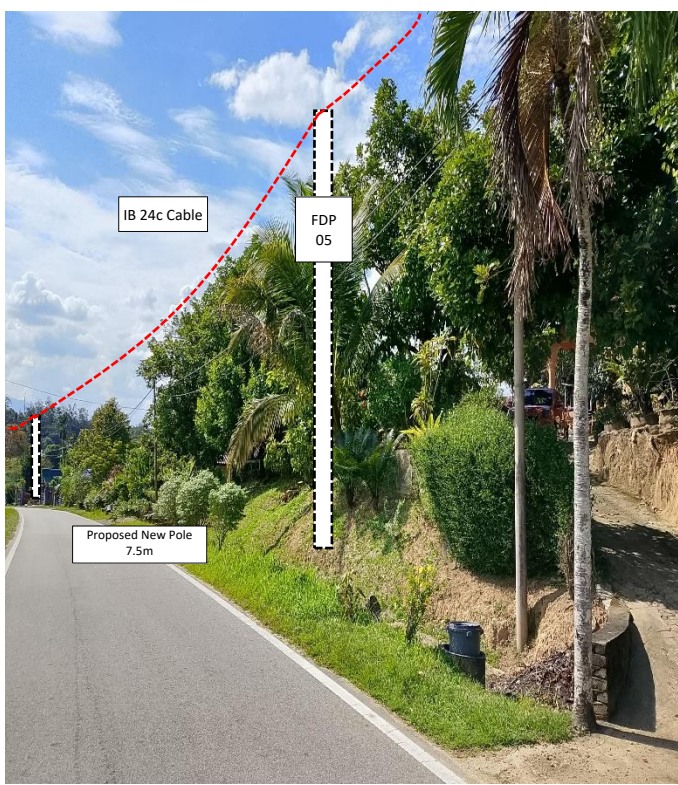
4.0 PROPOSED NEW POLE

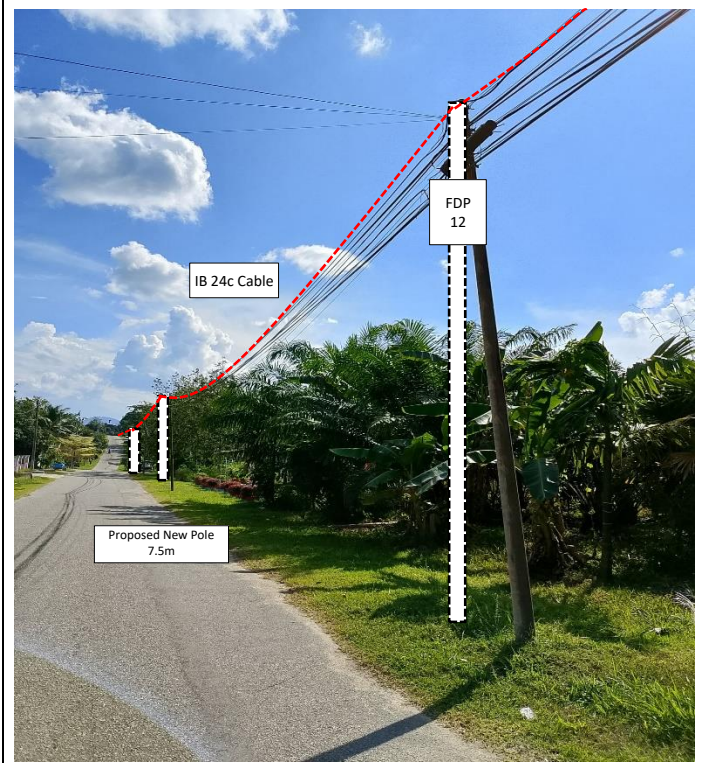
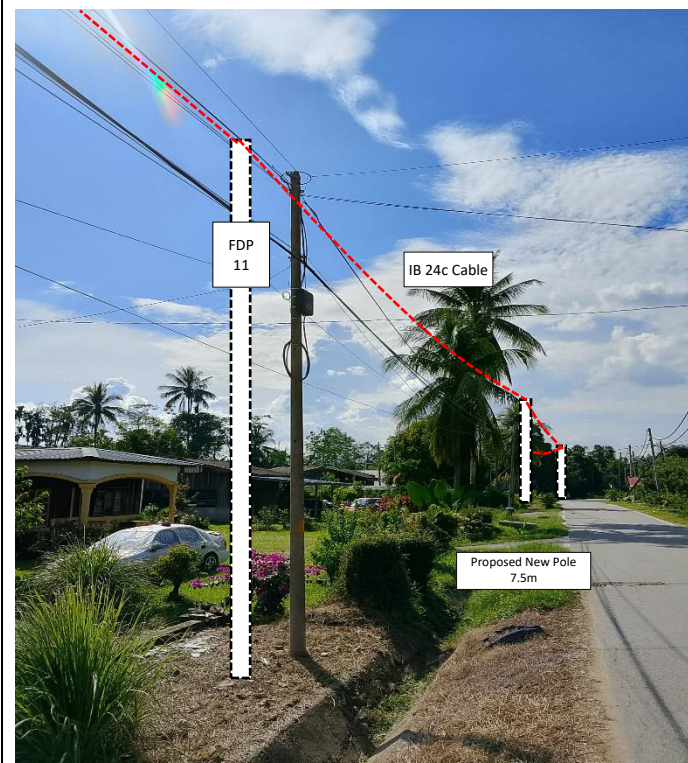
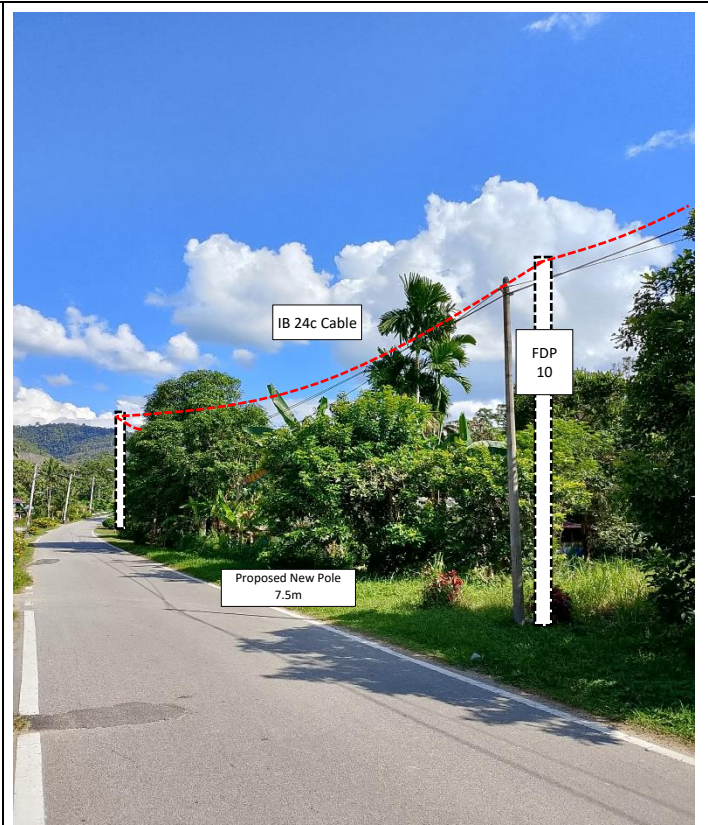
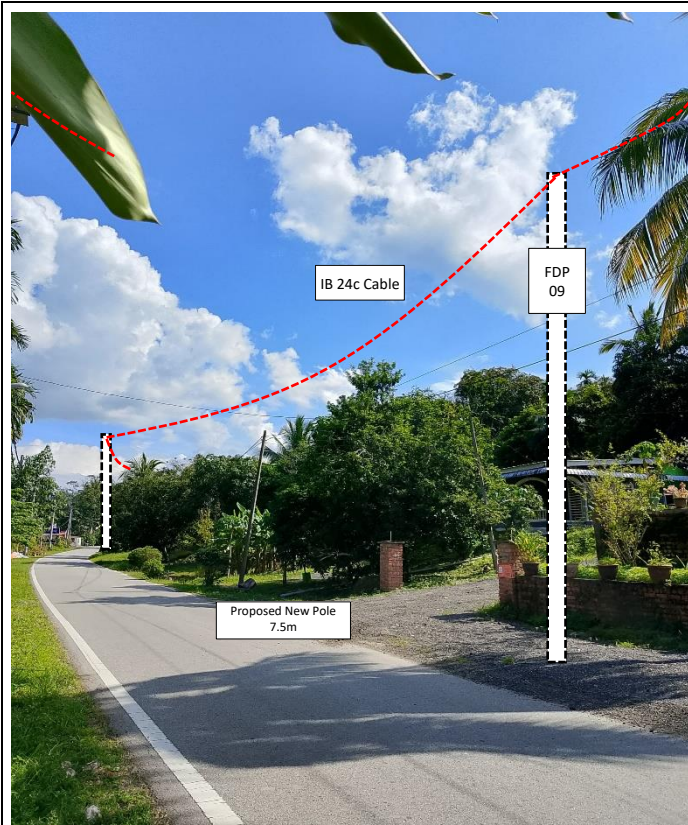
Proposed New Pole Coordinate					
No.	Pole Number	Distance (m)	Latitude	Longitude	Local Authority
1	FDC EXT POLE	29	5.475409	101.205465	Felda Bersia
2	T001	27	5.475230	101.205648	Felda Bersia
3	T002	27	5.475462	101.205579	Felda Bersia
4	T003	39	5.476319	101.205932	Felda Bersia
5	T004	38	5.475972	101.205939	Felda Bersia
6	T005	37	5.475619	101.205952	Felda Bersia
7	T006	11	5.475554	101.205620	Felda Bersia
8	T007	40	5.475495	101.205262	Felda Bersia
9	T008	34	5.475425	101.204952	Felda Bersia
10	T009	34	5.475377	101.204647	Felda Bersia
11	T010	36	5.475344	101.204324	Felda Bersia
12	T011	20	5.475496	101.204220	Felda Bersia
13	T012	32	5.475784	101.204181	Felda Bersia
14	T013	27	5.476022	101.204143	Felda Bersia
15	T014	31	5.476296	101.204070	Felda Bersia
16	T015	42	5.476661	101.203966	Felda Bersia
17	T016	41	5.477006	101.203834	Felda Bersia
18	T017	40	5.477341	101.203687	Felda Bersia
19	T018	37	5.477649	101.203529	Felda Bersia
20	T019	40	5.477955	101.203327	Felda Bersia
21	T020	38	5.478235	101.203115	Felda Bersia
22	T021	35	5.478457	101.202879	Felda Bersia
23	T022	34	5.478678	101.202651	Felda Bersia
24	T023	35	5.478864	101.202393	Felda Bersia
25	T024	37	5.479005	101.202095	Felda Bersia
26	T025	37	5.479120	101.201777	Felda Bersia
27	T026	38	5.479203	101.201435	Felda Bersia
28	T027	34	5.479247	101.201119	Felda Bersia
29	T028	37	5.479288	101.200777	Felda Bersia
30	T029	35	5.479319	101.200462	Felda Bersia
31	T030	39	5.479347	101.200115	Felda Bersia
32	T031	34	5.479368	101.199795	Felda Bersia
33	T032	33	5.479397	101.199496	Felda Bersia
34	T033	35	5.479420	101.199176	Felda Bersia
35	T034	37	5.479445	101.198840	Felda Bersia
36	T035	38	5.479438	101.198491	Felda Bersia
37	T036	38	5.479096	101.198528	Felda Bersia
38	T037	41	5.478720	101.198543	Felda Bersia

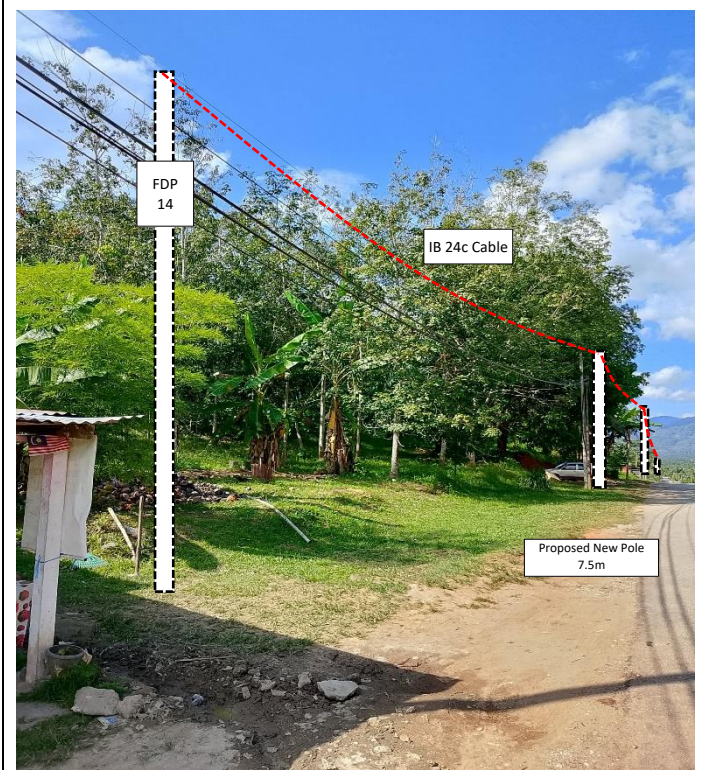
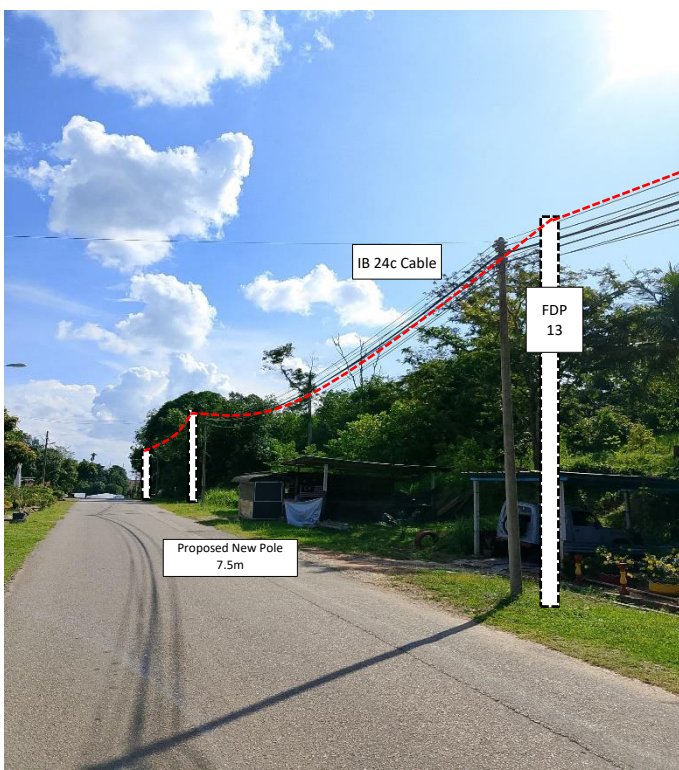
39	T038	34	5.478408	101.198529	Felda Bersia
40	T039	35	5.478088	101.198527	Felda Bersia
41	T040	35	5.477776	101.198533	Felda Bersia
42	T041	33	5.477483	101.198532	Felda Bersia
43	T042	42	5.477110	101.198515	Felda Bersia
44	T043	41	5.476742	101.198503	Felda Bersia
45	T044	40	5.476380	101.198491	Felda Bersia
46	T045	40	5.476012	101.198492	Felda Bersia
47	T046	40	5.475652	101.198482	Felda Bersia
48	T047	38	5.475294	101.198477	Felda Bersia
49	T048	40	5.474932	101.198483	Felda Bersia
50	T049	42	5.474553	101.198483	Felda Bersia
51	T050	40	5.474185	101.198485	Felda Bersia
52	T051	26	5.476226	101.203845	Felda Bersia
53	T052	35	5.476178	101.203527	Felda Bersia
54	T053	31	5.476131	101.203252	Felda Bersia
55	T054	32	5.475880	101.203395	Felda Bersia
56	T055	30	5.475611	101.203439	Felda Bersia
57	T056	38	5.476090	101.202904	Felda Bersia
58	T057	34	5.476037	101.202605	Felda Bersia
59	T058	32	5.475987	101.202307	Felda Bersia
60	T059	41	5.475919	101.201949	Felda Bersia
61	T060	33	5.475826	101.201662	Felda Bersia
62	T061	38	5.475655	101.201350	Felda Bersia
63	T062	33	5.475462	101.201123	Felda Bersia
64	T063	37	5.475202	101.200902	Felda Bersia
65	T064	34	5.474945	101.200729	Felda Bersia
66	T065	39	5.474612	101.200594	Felda Bersia
67	T066	44	5.474229	101.200489	Felda Bersia
68	T067	40	5.476174	101.201563	Felda Bersia
69	T068	37	5.476499	101.201476	Felda Bersia
70	T069	22	5.476688	101.201418	Felda Bersia
71	T070	35	5.476594	101.201114	Felda Bersia
72	T071	38	5.476465	101.200797	Felda Bersia

5.0 SITE PHOTOS - PROPOSED NEW POLE











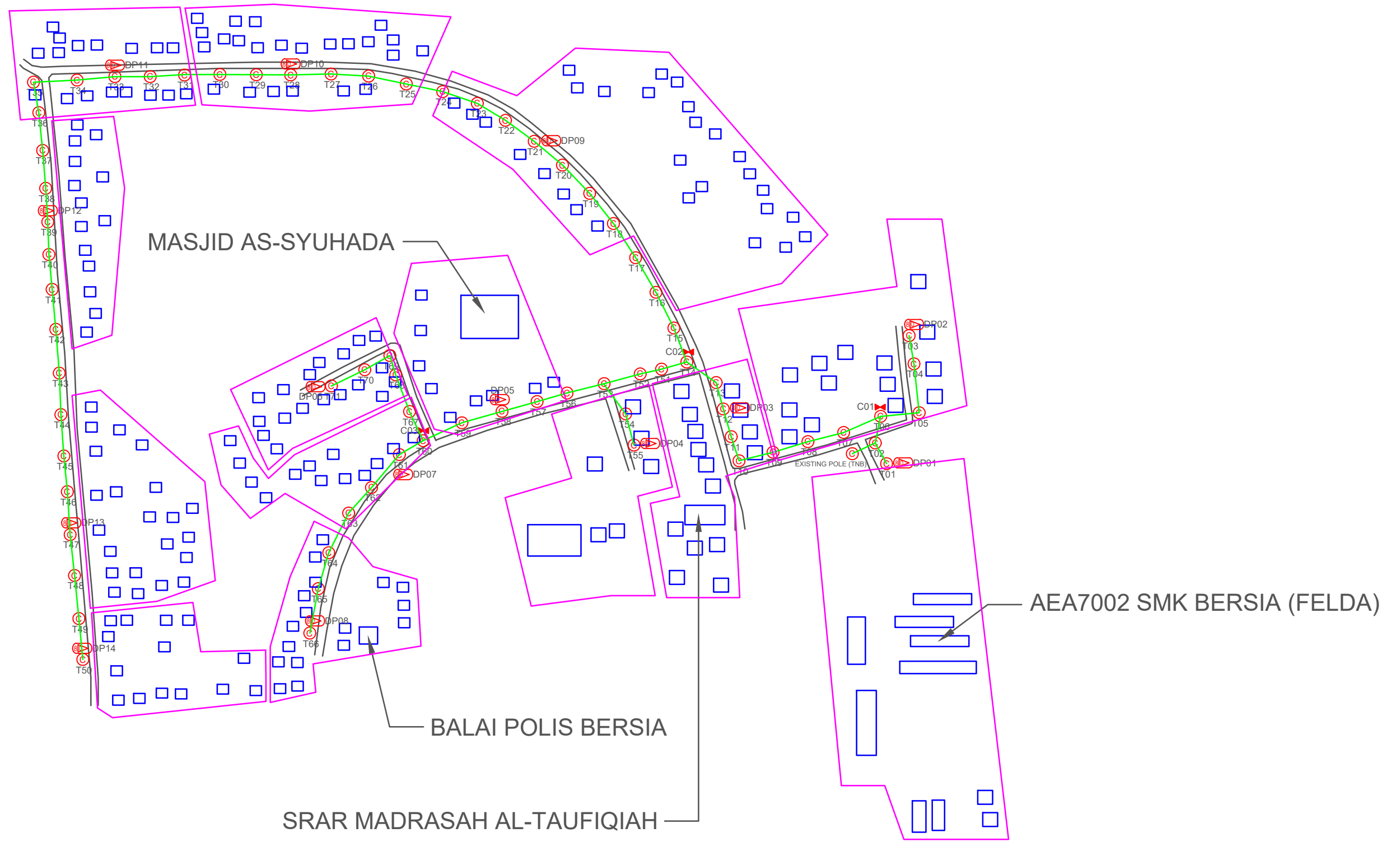
PROJEK PENYEDIAAN DAN PENYELENGGARAAN POINT OF PRESENCE (POP)
FASA 2: HAB INFRASTRUTUK GENTIAN OPTIK BERHAMPIRAN DENGAN
SEKOLAH, KAWASAN PERINDUSTRIAN, PREMIS KERAJAAN DAN KOMUNITI
SEKITARNYA OLEH KEMENTERIAN KOMUNIKASI MALAYSIA – ZON UTARA
(KKMM.400-11/17/132(1))



WABTECH SDN BHD
(1398287-X)

6.0 3rd PARTIES DEPENDENCIES

NO	LOCAL COUNCIL / AUTHORITY	REMARK
1	Felda Bersia	2531
2	JKR Daerah Gerik	0



TOTAL HOME PASSES: 112 UNITS

LEGEND	
	12C FOC
	24C FOC
	48C FOC
	96C FOC
	144C FOC
	Installed 1:4 splitter in FDC
	FDP with (1:8) splitter
	Closure
	New Manhole (PT)
	Installed Pole (7.5M)
	Installed Pole (9m)
	Installed Riser
	Suspension Big
	Suspension Small
	FDC
	New Manhole(JRC7)
	House Number
	Existing TNB Pole
	LOOP
	FDP Boundary
	Tension Small / Tension Big
	Existing Manhole
	Closure NO.
	FDP NO.
	FDC NO.
	MH1
	MH NO.
	Existing TNB Pole NO.
	New Pole NO.
	SEE A-A in this page
	SEE SHEET XXXX



PROJECT OWNER :

MAIN CONTRACTOR

PRIVASAT

SUB-CONTRACTOR :

PROJECT TITLE:

CONTRACT FOR THE PROVISION OF SUPPLY, INSTALLATION, AND COMMISSIONING OF FTTX NETWORK INFRASTRUCTURE - POP 2 PROJECT D-SIDE - AEA7002 - SMK BERSIA (FELDA)

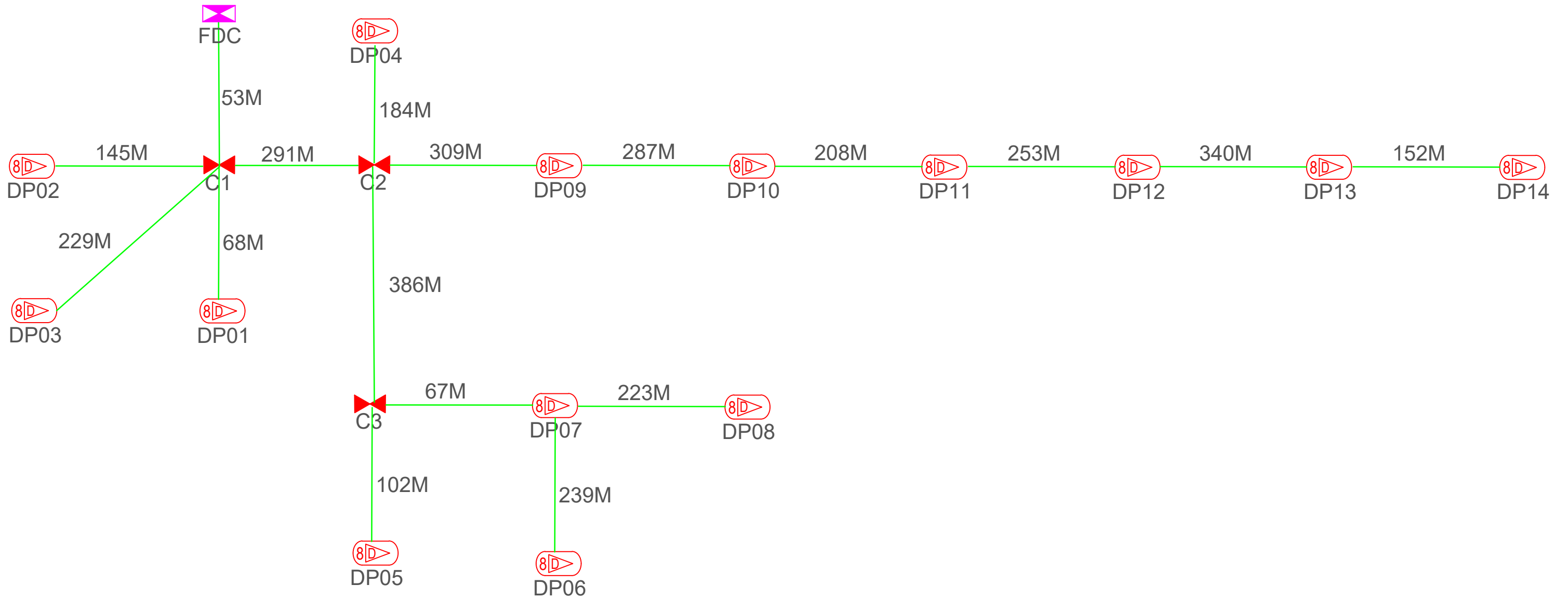
DRAWING TITLE:

AEA7002 SMK BERSIA (FELDA)

PROJECT PHASE:

PROJECT PHASE

Design By	ENGINEER	Date	DATE
Drawn By	CAD ENGINEER	Scale	NTS
Checked By	ENGINEER	Job Number	JOB/NUMBER
DRAWING NUMBER :		Sheet :	
DRAWING/NUMBER		1/1	
THIS PRINT AND ITS COPYRIGHT ARE THE PROPERTY		Size :	
		A3	



TOTAL FOC DISTANCE: 3,451 METERS

LEGEND											
	12C FOC		Installed 1:4 splitter in FDC		Installed Pole (9m)		New Manhole(JRC7)		Tension Small / Tension Big		MH NO.
	24C FOC		FDP with (1:8) splitter		Installed Riser		House Number		Existing Manhole		Existing TNB Pole NO.
	48C FOC		Closure		Suspension Big		Existing TNB Pole		Closure NO.		New Pole NO.
	96C FOC		New Manhole (PT)		Suspension Small		LOOP		FDP NO.		SEE A-A in this page
	144C FOC		Installed Pole (7.5M)		FDC		FDP Boundary		FDC NO.		SEE SHEET XXXX

KEY PLAN : 	PROJECT OWNER : KEMENTERIAN KOMUNIKASI	MAIN CONTRACTOR : APEX COMMUNICATIONS SDN BHD PRIVASAT	SUB-CONTRACTOR : WABTECH SDN BHD	PROJECT TITLE: CONTRACT FOR THE PROVISION OF SUPPLY, INSTALLATION, AND COMMISSIONING OF FTTX NETWORK INFRASTRUCTURE - POP 2 PROJECT D-SIDE - AEA7002 - SMK BERSIA (FELDA)	DRAWING TITLE: AEA7002 SMK BERSIA (FELDA)	Design By ENGINEER	Date DATE
						Drawn By CAD ENGINEER	Scale NTS
PROJECT PHASE: PROJECT PHASE						Checked By ENGINEER	Job Number JOB/NUMBER
DRAWING NUMBER : DRAWING/NUMBER						Sheet : 1/1	
THIS PRINT AND ITS COPYRIGHT ARE THE PROPERTY						Size : A3	