

TECHNICAL PROPOSAL

POP2 ABD0081 SEKOLAH JENIS KEBANGSAAN TAMIL LADANG TONG WAH (D-SIDE)

Company Name	:	STEADCOM SDN BHD
Company Address	:	11-3, Jalan Puteri 2/6, Bandar Puteri, 47100 Puchong, Selangor
Prepared By	:	Ashraff Azizi
Date	:	26/12/2024



POINT A

POINT B

Starting Point

Site / Boundary Name	:	SEKOLAH JENIS KEBANGSAAN TAMIL LADANG TONG WAH
Address	:	Ladang Tong Wah, 35000, Tapah, Perak
District	:	Tapah
Postcode	:	35500
State	:	Perak
GPS Coordinate	:	4.234965, 101.251088
LRD	:	A

End Point

Site / Boundary Name	:	SEKOLAH JENIS KEBANGSAAN TAMIL LADANG TONG WAH
Address	:	Ladang Tong Wah, 35000, Tapah, Perak
District	:	Tapah
Postcode	:	35500
State	:	Perak
GPS Coordinate	:	4.233933, 101.252646
LRD	:	B

Work Summary

No	Proposed Distance and Method	Unit	Qty
1	Horizontal Directional Drilling (HDD)	m	120
2	Carriage Way Open trench (CW)	m	0
3	Grass Verge Open Trenching (GV)	m	0
4	Micro trenching (MT)	m	0
	Total		120

	Other Information	Unit	Qty
1	Proposed Manhole	EA	2
2	Proposed Pole	EA	44
3	Joint Closure	EA	2
4	Estimated time required for completion	Days	30

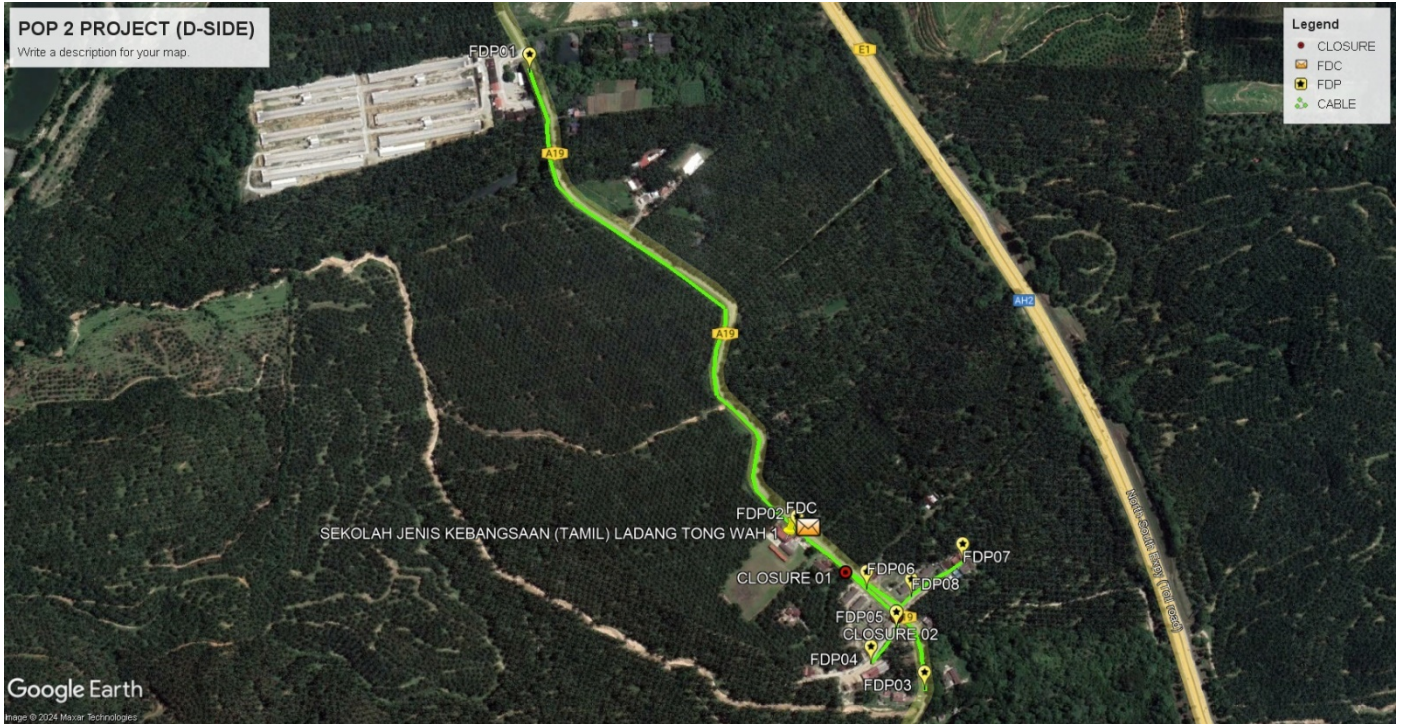
Local Authority Summary

1. Majlis Daerah Tapah

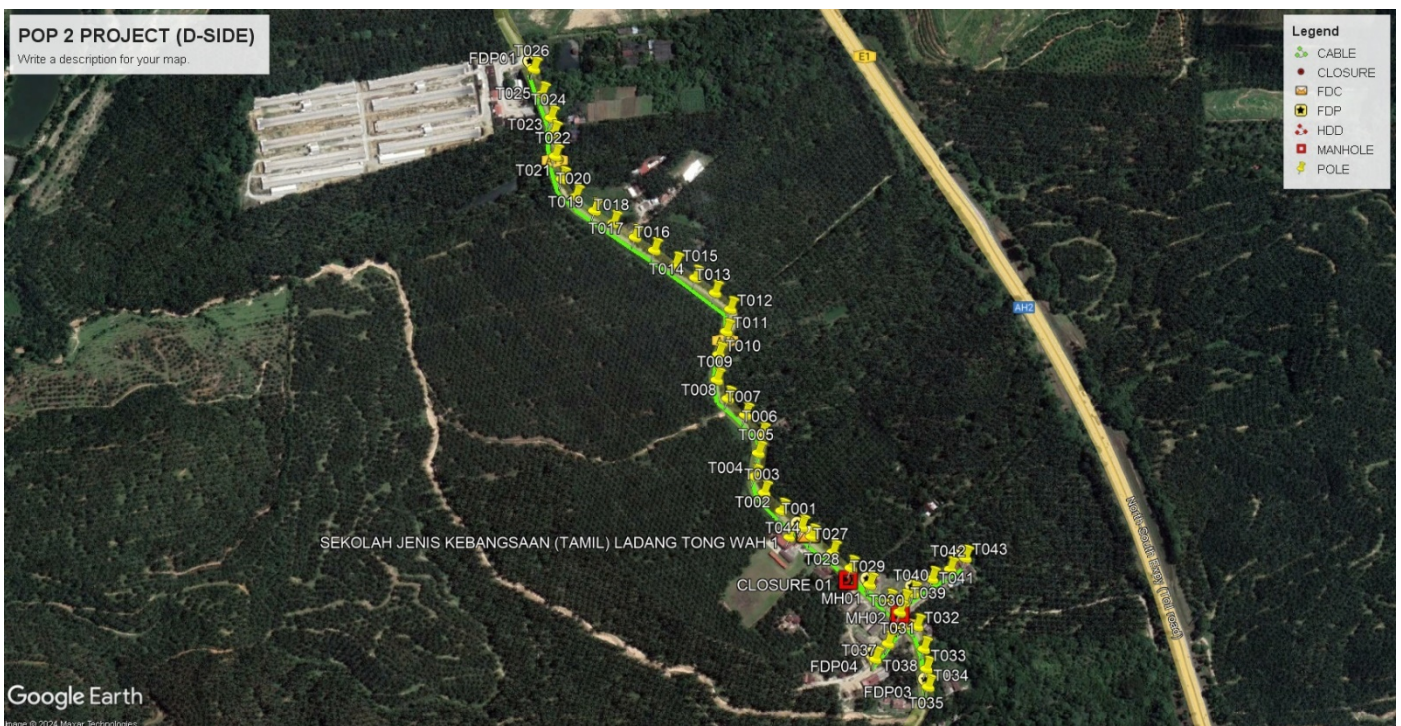
Bil	Items	Owner	Quantity	Distance(m)
1	HDD	JKR	2	120m
		Majlis	-	-
		Estate / Private Land	-	-
2	New Pole	JKR	36	1265m
		Majlis	-	-
		Estate / Private Land	8	215m
3	Existing TNB Pole	JKR	-	-
		Majlis	-	-
		Estate / Private Land	-	-
Total				1600m

Site Plan – KMZ (Overview site area)

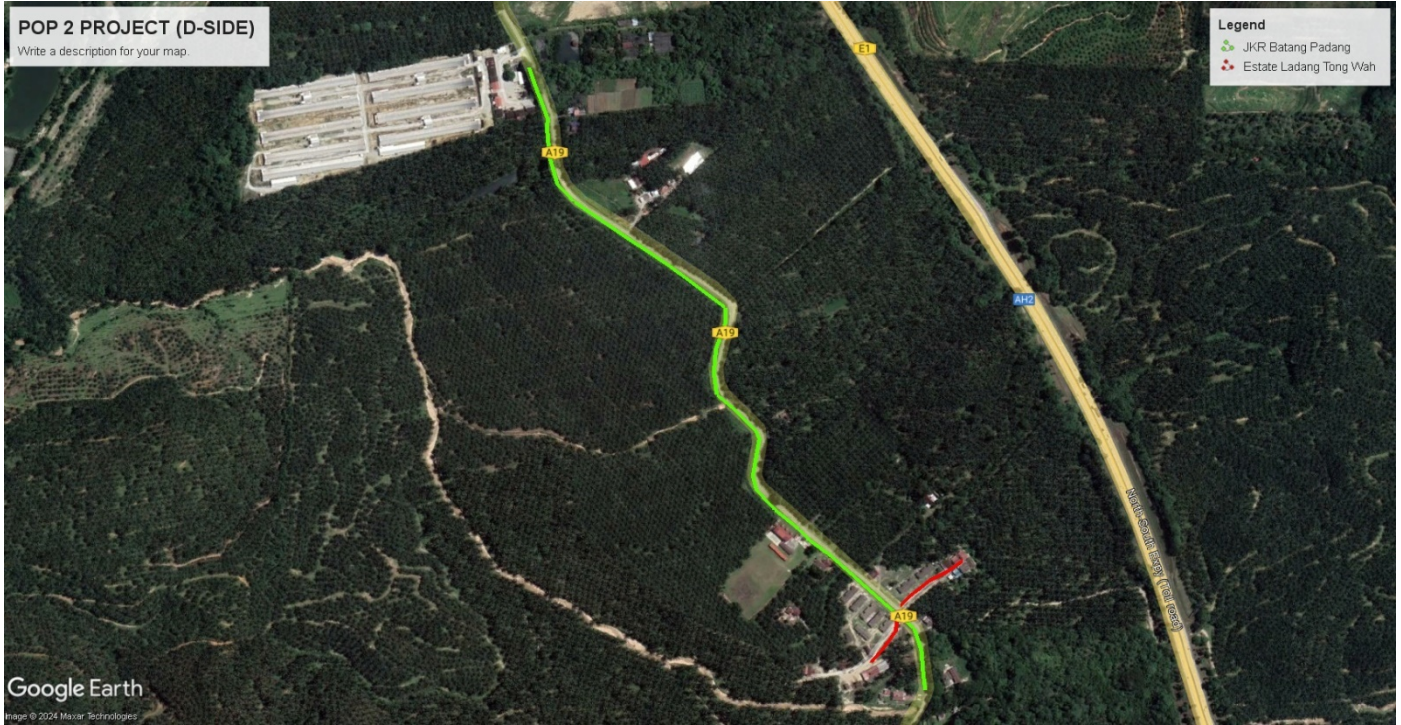
Proposed FDP and Closure



Proposed New Pole



Site Plan – KMZ Routing (All Local Authority)

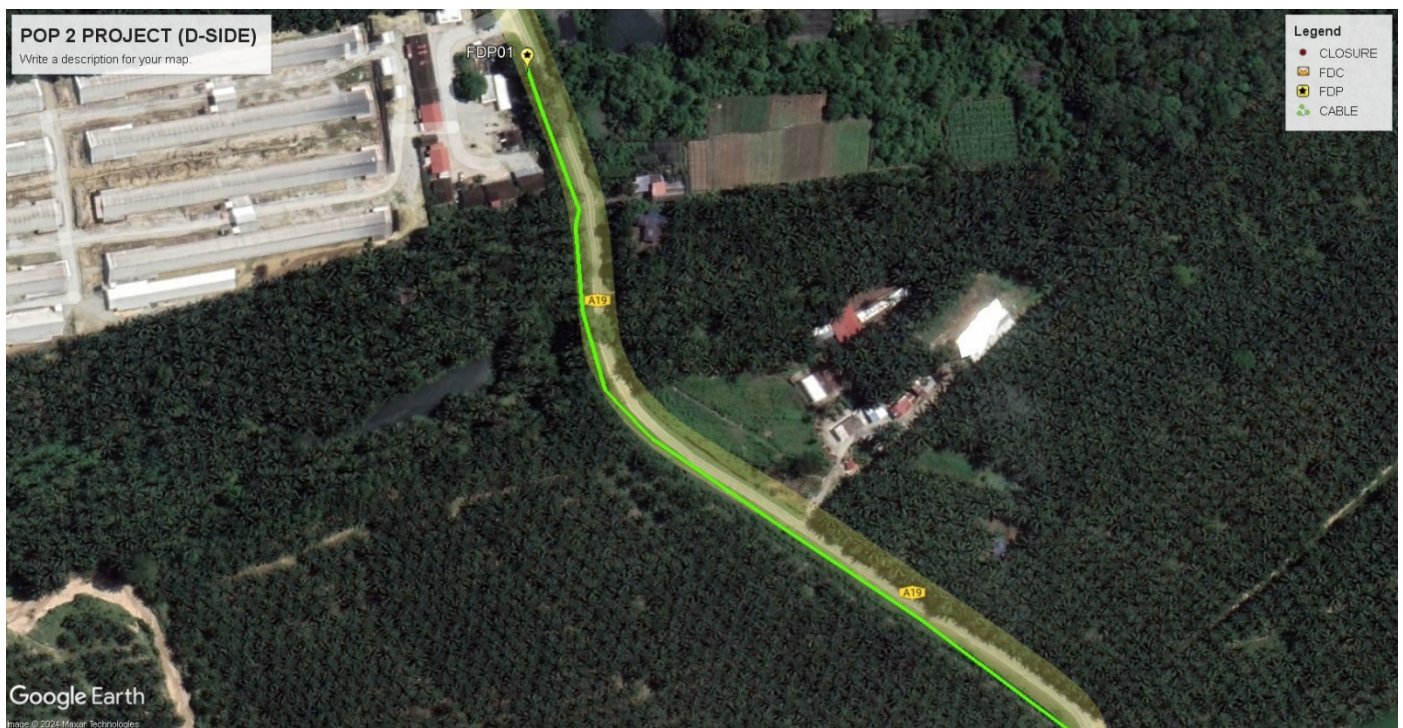
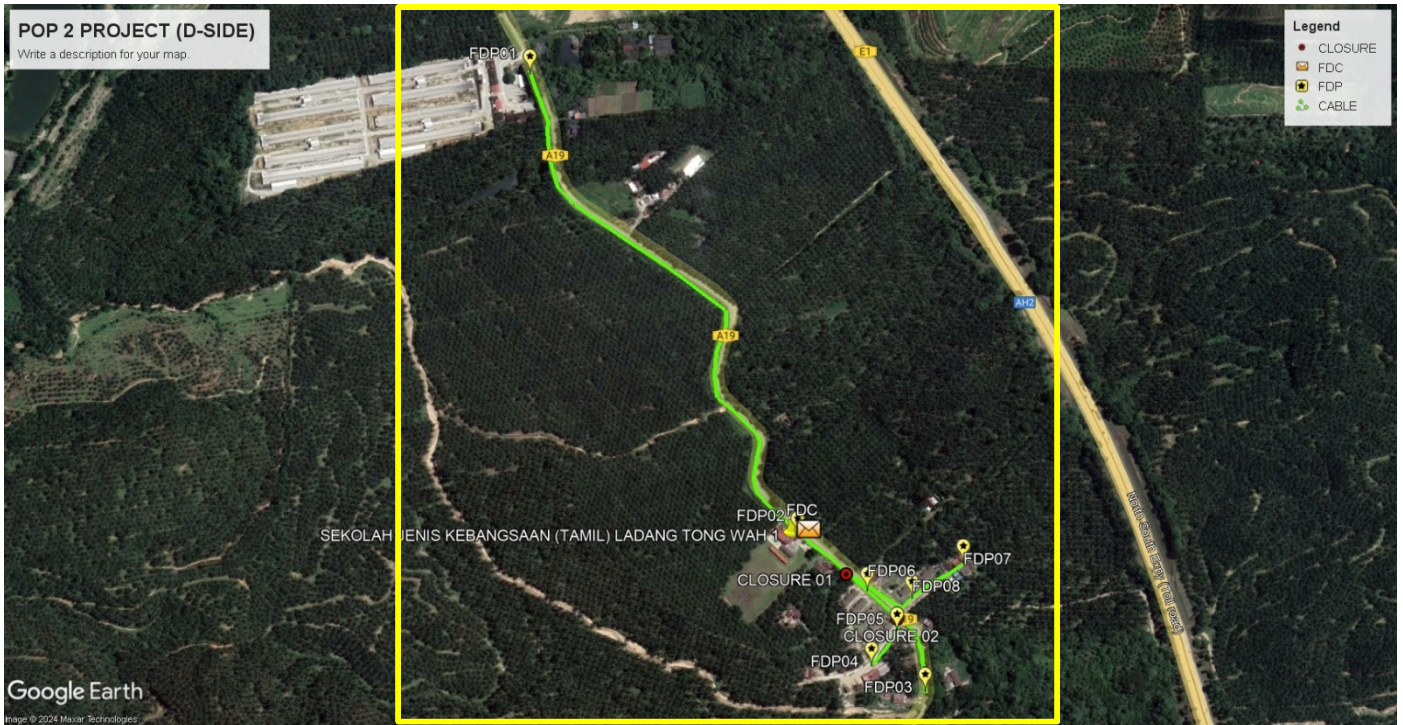


Green Colour – JKR Batang Padang

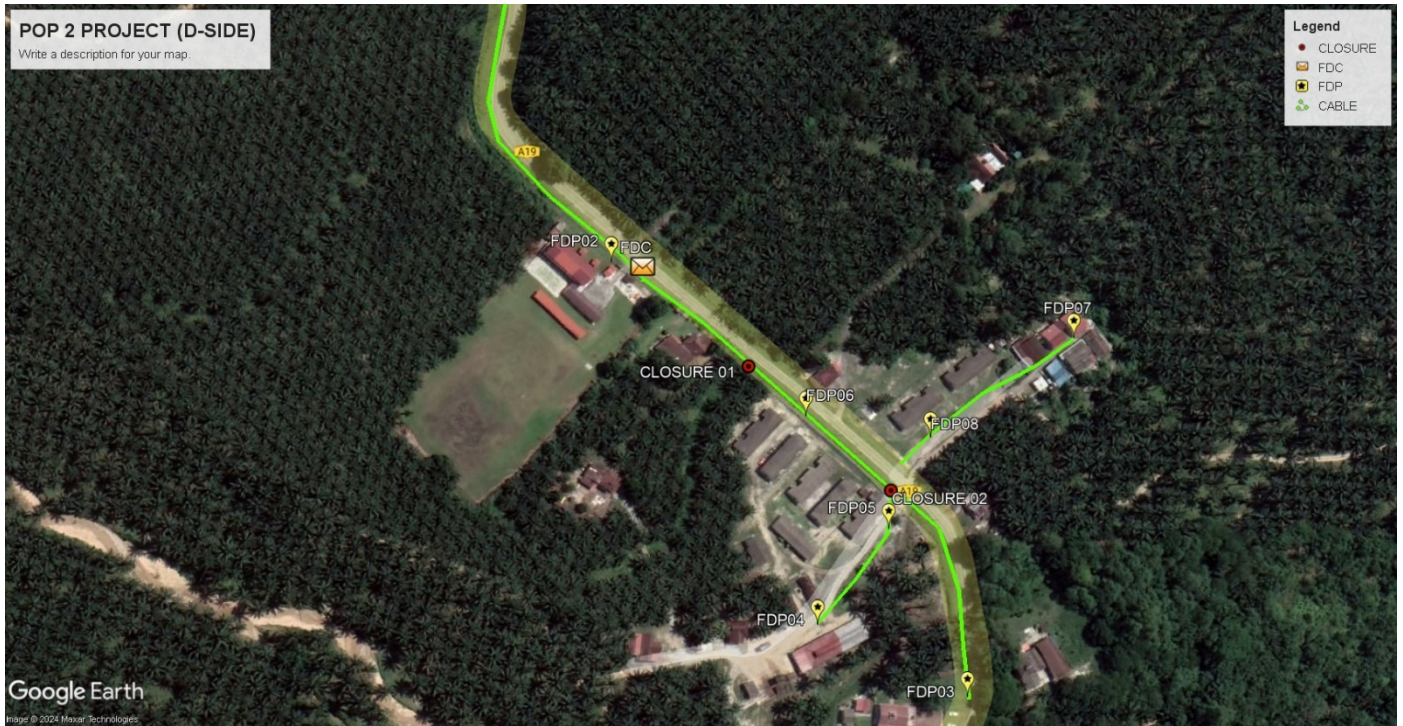
Red Colour – Estate Ladang Tong Wah

Site Plan – KMZ Routing (All site area)

Route 1

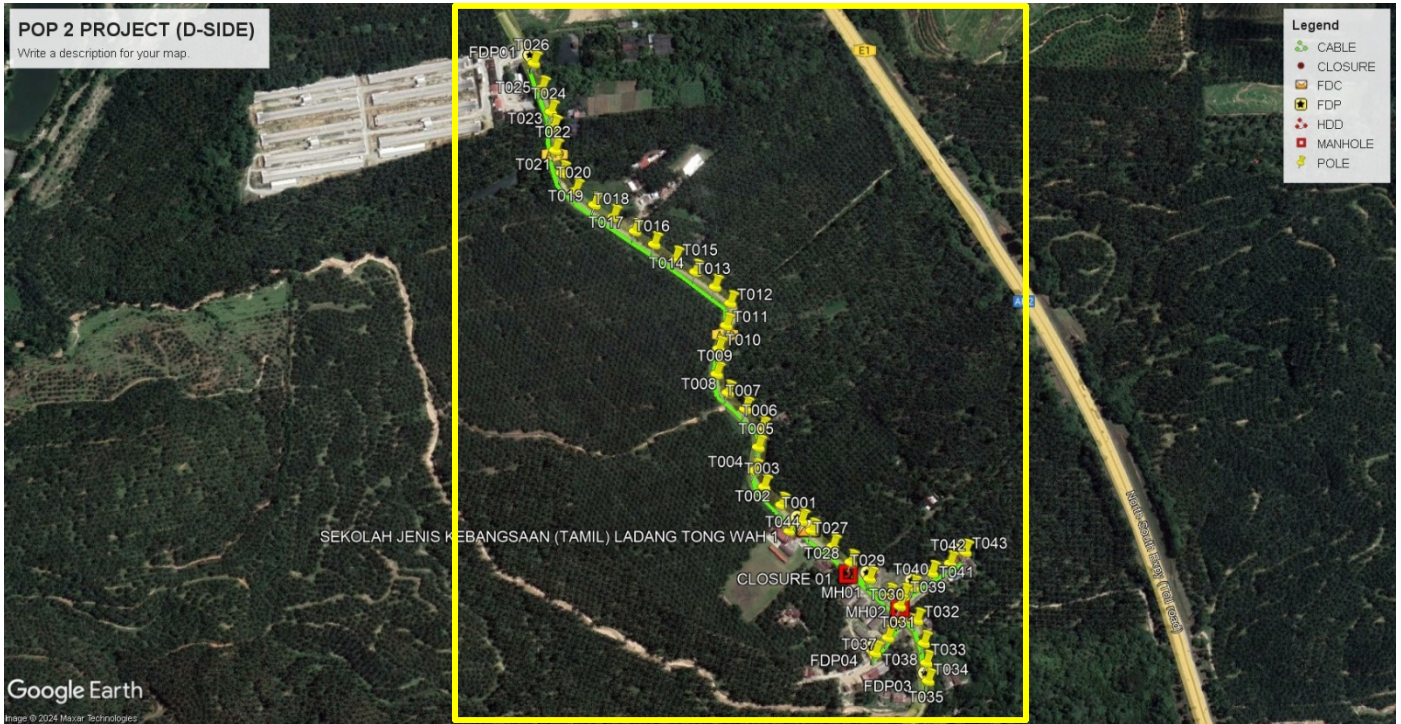


Route 1.1



Route 1.2

Site Plan – KMZ Routing (Proposed new Pole)



Proposed New Pole Lat & Long Table

No.	Label	Pole & Manhole ID	Latitude	Longitude	Local Authority
1	OLT/FDC	T044	4.234804	101.251343	JKR Batang Padang
2	FDP01	T026	4.241417	101.247399	JKR Batang Padang
3	FDP02	T001	4.234938	101.251196	JKR Batang Padang
4	FDP03	T035	4.232677	101.252995	JKR Batang Padang
5	FDP04	T038	4.233071	101.252248	Estate Ladang Tong Wah
6	FDP05	T036	4.233557	101.252580	Estate Ladang Tong Wah
7	FDP06	T029	4.234123	101.252164	JKR Batang Padang
8	FDP07	T043	4.234501	101.253522	Estate Ladang Tong Wah
9	FDP08	T040	4.233998	101.252781	Estate Ladang Tong Wah
15	CL01	T028	4.233998	101.252781	JKR Batang Padang
16	CL02	T031	4.233736	101.252594	JKR Batang Padang

Overall Pole (Proposed New)

No.	Pole & Manhole ID	Distance	Latitude	Longitude	Local Authority
1	T001	40	4.234938	101.251196	JKR Batang Padang
2	T002	40	4.235168	101.250914	JKR Batang Padang
3	T003	40	4.235424	101.250667	JKR Batang Padang
4	T004	40	4.235654	101.250531	JKR Batang Padang
5	T005	40	4.235985	101.250585	JKR Batang Padang
6	T006	40	4.236245	101.250634	JKR Batang Padang
7	T007	40	4.236524	101.250402	JKR Batang Padang
8	T008	40	4.236755	101.250151	JKR Batang Padang
9	T009	40	4.237018	101.249996	JKR Batang Padang
10	T010	40	4.237377	101.250022	JKR Batang Padang
11	T011	40	4.237704	101.250131	JKR Batang Padang
12	T012	40	4.238020	101.250188	JKR Batang Padang
13	T013	40	4.238252	101.249971	JKR Batang Padang
14	T014	40	4.238464	101.249692	JKR Batang Padang
15	T015	40	4.238650	101.249411	JKR Batang Padang
16	T016	40	4.238854	101.249109	JKR Batang Padang
17	T017	40	4.239039	101.248834	JKR Batang Padang
18	T018	40	4.239238	101.248532	JKR Batang Padang
19	T019	40	4.239414	101.248260	JKR Batang Padang
20	T020	40	4.239611	101.247993	JKR Batang Padang
21	T021	40	4.239860	101.247801	JKR Batang Padang
22	T022	40	4.240184	101.247701	JKR Batang Padang
23	T023	40	4.240508	101.247684	JKR Batang Padang
24	T024	40	4.240727	101.247641	JKR Batang Padang
25	T025	40	4.241058	101.247516	JKR Batang Padang
26	T026	40	4.241417	101.247399	JKR Batang Padang
27	T027	40	4.234581	101.251643	JKR Batang Padang
28	T028	40	4.234359	101.251896	JKR Batang Padang
29	T029	40	4.234123	101.252164	JKR Batang Padang
30	T030	40	4.233883	101.252437	JKR Batang Padang
31	T031	40	4.233736	101.252594	JKR Batang Padang
32	T032	40	4.233532	101.252839	JKR Batang Padang
33	T033	40	4.233212	101.252936	JKR Batang Padang
34	T034	40	4.232933	101.252971	JKR Batang Padang
35	T035	40	4.232677	101.252995	JKR Batang Padang
36	T036	40	4.233557	101.252580	Estate Ladang Tong Wah
37	T037	40	4.233289	101.252426	Estate Ladang Tong Wah
38	T038	40	4.233071	101.252248	Estate Ladang Tong Wah
39	T039	40	4.233879	101.252645	Estate Ladang Tong Wah
40	T040	40	4.233998	101.252781	Estate Ladang Tong Wah
41	T041	40	4.234202	101.253050	Estate Ladang Tong Wah

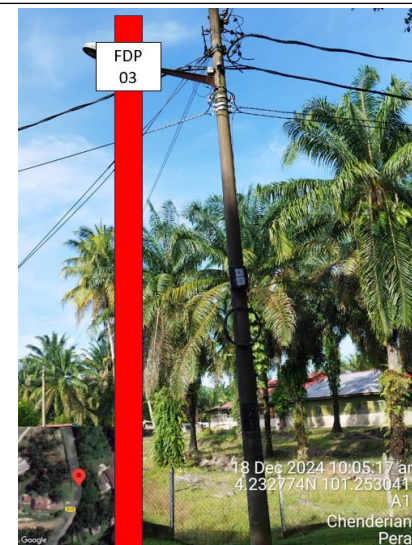
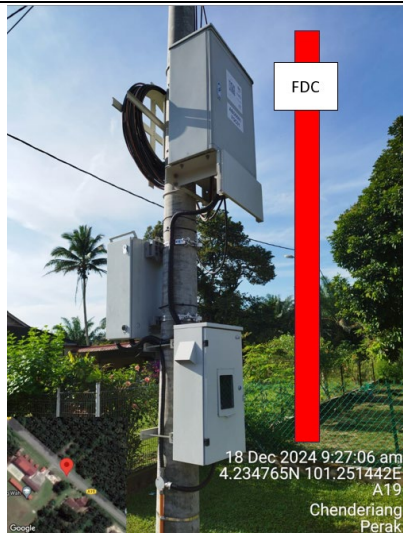


PROJEK PENYEDIAAN DAN PENYELENGGARAAN POINT OF PRESENCE (POP) FASA 2: HAB INFRASTRUKTUR GENTIAN OPTIK BERHAMPIRAN DENGAN SEKOLAH, KAWASAN PERINDUSTRIAN, PREMIS KERAJAAN DAN KOMUNITI SEKITARNYA OLEH KEMENTERIAN KOMUNIKASI MALAYSIA - ZON UTARA (KKMM.400-11/17/132(1))



42	T042	40	4.234339	101.253308	Estate Ladang Tong Wah
43	T043	40	4.234501	101.253522	Estate Ladang Tong Wah
44	T044	40	4.234804	101.251343	JKR Batang Padang
45	MH01	0	4.234343	101.251907	JKR Batang Padang
46	MH02	120	4.233869	101.252642	JKR Batang Padang

Site Photos – Proposed to install pole



PROJEK PENYEDIAAN DAN PENYELENGGARAAN POINT OF PRESENCE (POP) FASA 2: HAB INFRASTRUKTUR GENTIAN OPTIK BERHAMPIRAN DENGAN SEKOLAH, KAWASAN PERINDUSTRIAN, PREMIS KERAJAAN DAN KOMUNITI SEKITARNYA OLEH KEMENTERIAN KOMUNIKASI MALAYSIA - ZON UTARA (KKMM.400-11/17/132(1))

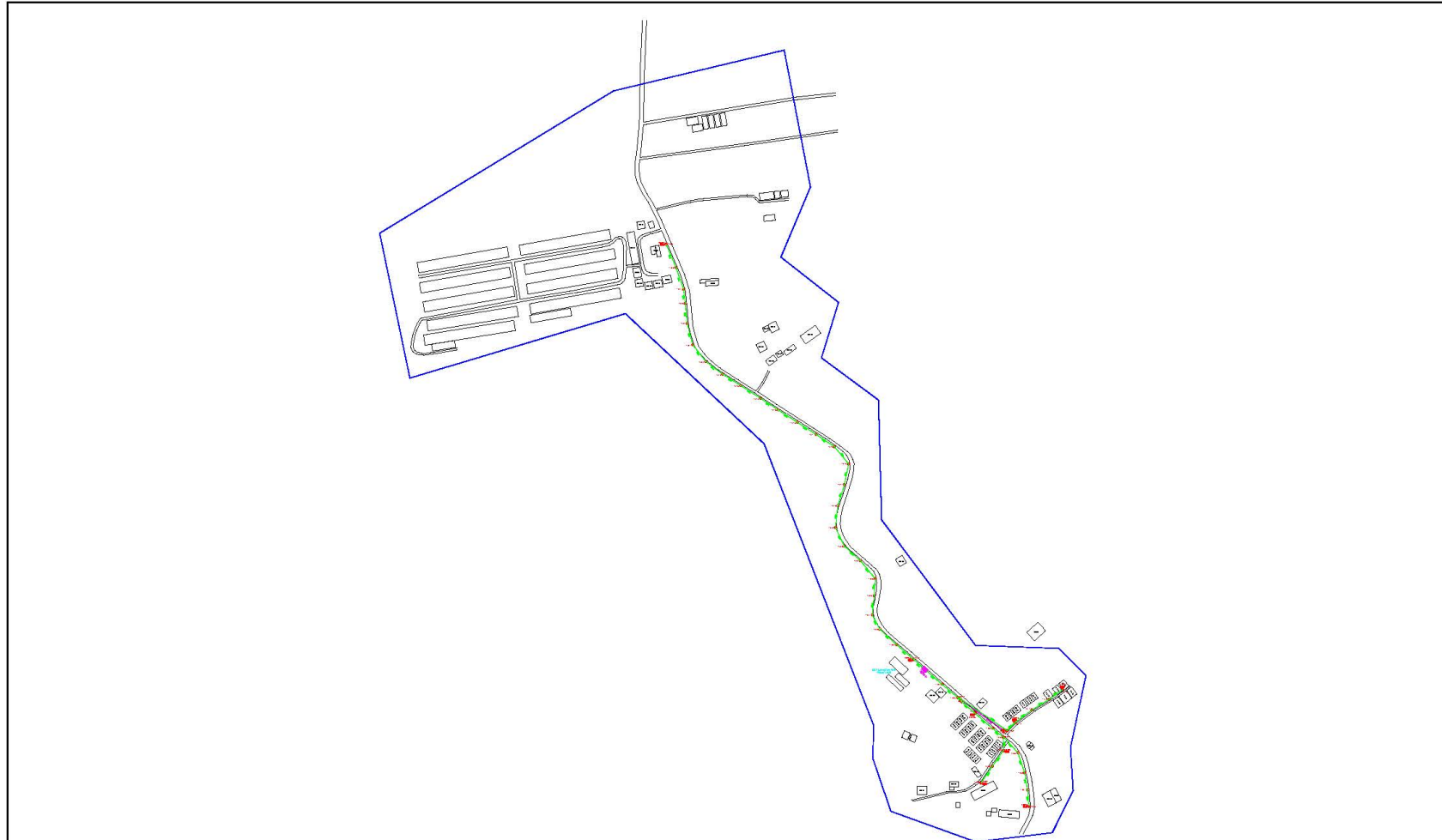


PROJEK PENYEDIAAN DAN PENYELENGGARAAN POINT OF PRESENCE (POP) FASA 2: HAB INFRASTRUKTUR GENTIAN OPTIK BERHAMPIRAN DENGAN SEKOLAH, KAWASAN PERINDUSTRIAN, PREMIS KERAJAAN DAN KOMUNITI SEKITARNYA OLEH KEMENTERIAN KOMUNIKASI MALAYSIA - ZON UTARA (KKMM.400-11/17/132(1))



3rd Parties Dependencies

No.	Local Council/ Authority	Remark
1	JKR Batang Padang	
2	Estate Ladang Tong wah	
3		
4		
5		
6		



LEGEND	NOS.	NOS.	NOS.	NOS.	NOS.	NOS.	NOS.	NOS.	NOS.	NOS.	NOS.	NOS.
12C FOC	1	Installed 1:4 / 1:8 / 1:32 splitter	2	Installed Pole (6m)	3	Suspension	4	New Manhole (PT)	5	Micro-Trenching (Meter)	6	MH MH NO.
24C FOC	1	Installed Patch Cord	4	Installed Pole (7.5M)	5	Tension	6	New Manhole (RC7)	7	Temporary Infra (Meter)	8	Existing THB Pole NO.
48C FOC	1	FOC	5	Installed Pole (8.7M)	6	Pole Ring	7	FOC Boundary	8	Loop / Coil (Meter)	9	New Pole NO.
96C FOC	2	Closure	6	Existing THB Pole	7	POP with 1:8 splitter	8	NEW (Meter)	9	Active Outdoor Cabinet	10	Closure NO.
144C FOC	2	Existing Closure	7	Installed Fiber	8	Existing Manhole	9	Open Cut (Meter)	10	FOC NO.	11	POP FOP NO.

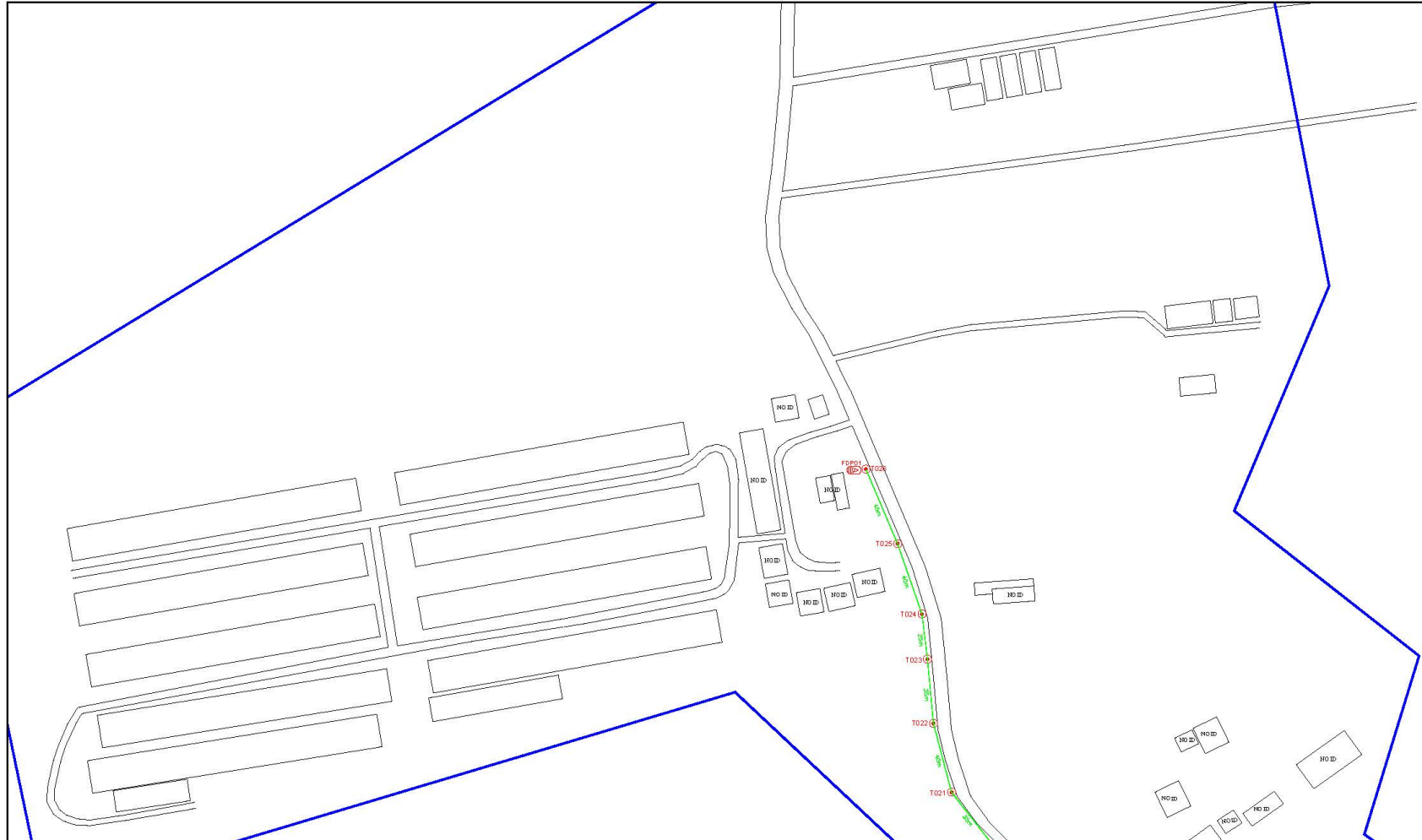
ACTUAL HOMEPASS :

KEY PLAN :	OWNER/DEVELOPER :	MAIN CONTRACTOR :	PROJECT TITLE :	DRAWING TITLE :	Design By :	Date :
POP2 PROJECT IN PERAK	APEX COMMUNICATIONS SDN BHD 187475-V	STEADCOM A member of OCK Group Berhad	CONTRACTOR FOR SURVEY, TECHNICAL PROPOSAL AND WAYLEAVE, & PERMIT APPROVAL - POP2 PROJECT	CONSTRUCTION DRAWING ABD0081 SEKOLAH JENIS KEBANGSAAN (TAMIL) LADANG TONGKAT	Drawn By :	25/12/2024
					Scale :	NOT TO SCALE
					Job Number :	1
					DRAWING NUMBER :	ABD0081-CD-01
					THIS PRINT AND ITS COPYRIGHT ARE THE PROPERTY OF APEX COMMUNICATIONS SDN BHD	Sheet : 1/5 Size : A3



LEGEND	NOS.		NOS.		NOS.		NOS.		NOS.		NOS.		NOS.		NOS.		NOS.
13C FOC		Installed 1:4 / 1:8 / 1:32 splitter		Installed Pole (6m)		Suspension		New Manhole (PT)		Micro-Tranching (Meter)		MH	MH NO.				
24C FOC	865	Installed Patch Cord		Installed Pole (7.5M)	43	Tension		New Manhole (R/C)	2	Temporary Intra (Meter)		TKS-1	Existing THD Pole NO.	N/A			
49C FOC		FOC	1	Installed Pole (6.7M)		Pole Ring		FDP Boundary		Long / Coil (Meter)		POH	New Pole NO.	23			
90C FOC		Closure	2	Existing THD Pole		FDP with 1:8 splitter	8	HDD (Meter)	120	Active Outdoor Cabinet		CL	Closure NO.	2			
144C FOC		Existing Closure		Installed Riser		Existing Manhole		Open Cut (Meter)		OT	FOC NO.	FDP	FDP NO.	8			

KEY PLAN :		OWNER/DEVELOPER :		MAIN CONTRACTOR :		PROJECT TITLE :		DRAWING TITLE :		Design By :		Date :	
POP2 PROJECT IN PERAK						CONTRACTOR FOR SURVEY, TECHNICAL PROPOSAL AND HANDLE, & PERMIT APPROVAL - POP2 PROJECT		CONSTRUCTION DRAWING ABD0081				23/12/2024	
						SEKOLAH JENIS KEBANGSAAN (TAMIL) LADANG TONGKAT		CONSTRUCTION DRAWING ABD0081-CD-03		Drawn By :		Scale : NOT TO SCALE	
						POP2 PROJECT		PROJECT PHASE : POP 2		Checked By :		Job Number : 1	
								SHEET NUMBER : ABD0081-CD-03		THIS PRINT AND ITS COPYRIGHT ARE THE PROPERTY OF APEX COMMUNICATIONS SDN BHD		Sheet : 3/5 Size : A3	



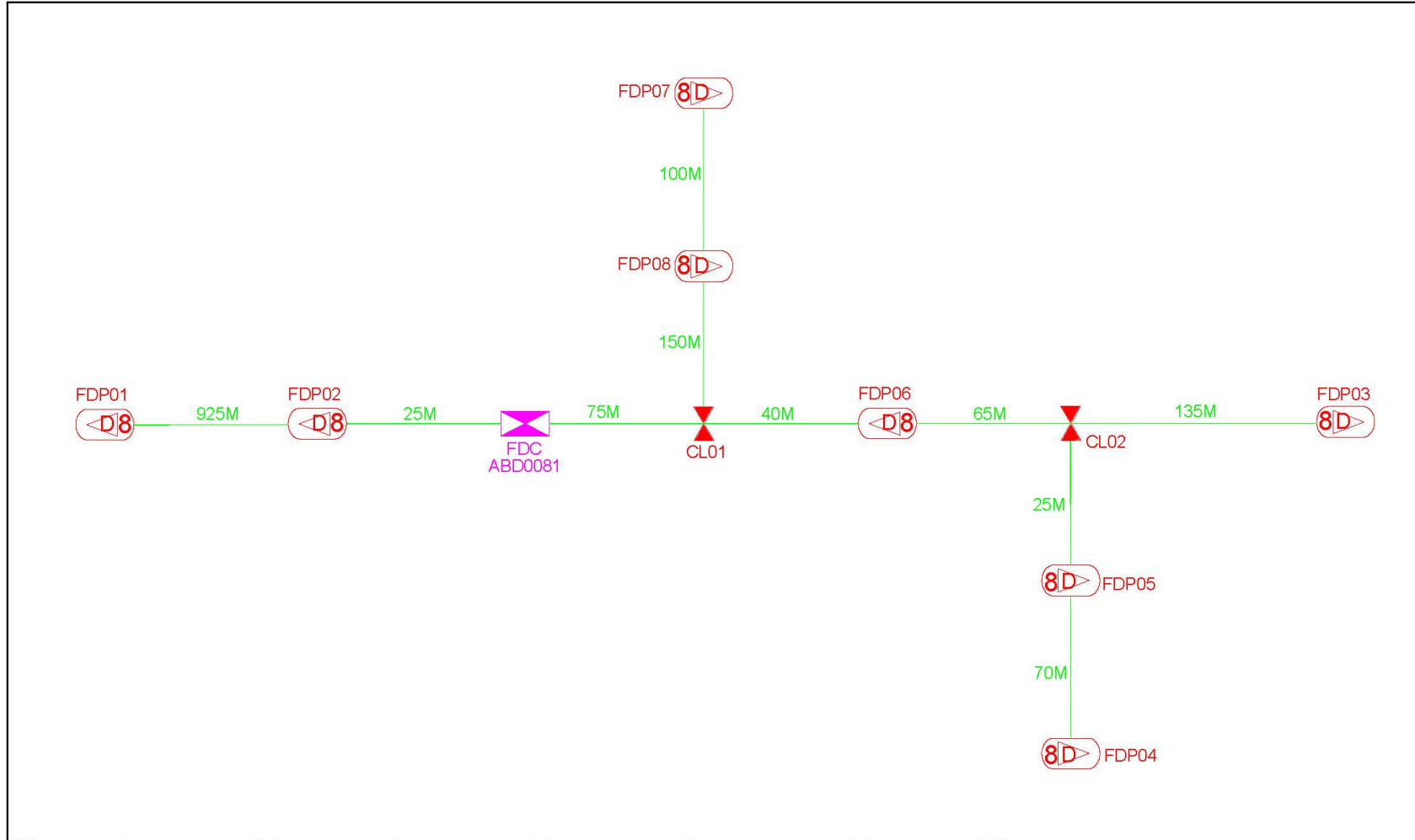
LEGEND	NOS.	DESCRIPTION	NOS.	DESCRIPTION	NOS.	DESCRIPTION	NOS.	DESCRIPTION	NOS.	DESCRIPTION	NOS.	DESCRIPTION	NOS.	DESCRIPTION
12C FOC	1	Installed 1:4 / 1:8 / 1:32 splitter	1	Installed Pole (6m)	1	Suspension	1	New Manhole (PT)	1	Micro-Tranching (Meter)	1	MH	MH NO.	1
24C FOC	1	Installed Patch Cord	43	Installed Pole (7.5M)	1	Tension	2	New Manhole (JRC7)	2	Temporary Infra (Meter)	1	TKS-1	Existing THB Pole NO.	N/A
48C FOC	1	FOC	1	Pole Ring	1	FDP Boundary	1	Loop / Coil (Meter)	1	Active Outdoor Cabinet	1	CL	Closure NO.	2
96C FOC	2	Closures	1	Existing THB Pole	1	FDP with 1:8 splitter	1	Open Cut (Meter)	1	FOC NO.	1	FDP	FDP NO.	1
144C FOC	1	Existing Closure	1	Installed Riser	1	Existing Manhole	1		1		1			1

<p>KEY PLAN :</p> <p>POP2 PROJECT IN PERAK</p>	<p>OWNER/DEVELOPER :</p>	<p>MAIN CONTRACTOR :</p> <p>A member of OCK Group Berhad</p>	<p>PROJECT TITLE :</p> <p>CONTRACTOR FOR SURVEY, TECHNICAL PROPOSAL AND WAYLEAVE, & PERMIT APPROVAL - POP 2 PROJECT</p>	<p>DRAWING TITLE :</p> <p>CONSTRUCTION DRAWING ABD0081 SEKOLAH JENIS KEBANGSAAN (TAMIL) LADANG TONGKAT</p>	<p>Design By :</p> <p>Drawn By :</p> <p>Checked By :</p> <p>DRAWING NUMBER :</p> <p>ABD0081-CD-04</p>	<p>Date :</p> <p>23/12/2024</p> <p>Scale :</p> <p>NOT TO SCALE</p> <p>Job Number :</p> <p>1</p>	<p>Sheet :</p> <p>4/5</p> <p>Size :</p> <p>A3</p>
--	--------------------------	--	---	--	---	---	---

ACTUAL HOMEPASS :

PROJECT PHASE : POP 2

THIS PRINT AND ITS COPYRIGHT ARE THE PROPERTY OF APEX COMMUNICATIONS SDN BHD



LEGEND	NOS.	NOS.	NOS.	NOS.	NOS.	NOS.	NOS.	NOS.	NOS.	NOS.	NOS.								
12C FGC	Installed 1/4 / 1/8 / 1/32 splitter	Installed Pole (6m)	Suspension	New Manhole (PT)	Micro-Trenching (Meter)	MFI	MFI NO.	24C FGC	Installed Patch Cord	Installed Pole (7.5M)	Tension	New Manhole (RGT)	Temporary Infra (Meter)	TKS-1	Deleting THB Pole NO.	N/A			
48C FGC	FDC	Installed Pole (8.7M)	Pole Ring	FDP Boundary	Loop / Coil (Meter)	PSM	New Pole NO.	96C FGC	Closure	Existing THB Pole	FDP with 1/8 splitter	Existing Manhole	HDD (Meter)	120	Active Outdoor Cabinet	CL	Closure NO.	2	
144C FGC	Closure	Existing Fiber	Existing Manhole	Open Cut (Meter)	OH	FDC NO.	FDP NO.												

ACTUAL HOMEPASS :

KEY PLAN :	OWNER/DEVELOPER :	MAIN CONTRACTOR :	PROJECT TITLE :	DRAWING TITLE :	Design By :	Date :
POP2 PROJECT IN PERAK	APEX COMMUNICATIONS SDN BHD 187475-V	STEADCOM A member of OCK Group Berhad	CONTRACTOR FOR SURVEY, TECHNICAL PROPOSAL AND WAYLEAVE, & PERMIT APPROVAL - POP2 PROJECT	SLD DRAWING ABD0081	Drawn By :	23/12/2024
			SEKOLAH JENIS KEBANGSAAN (TAMIL) LADANG TONGKAT		Scale :	NOT TO SCALE
					Job Number :	1
					Sheet :	5/5
				PROJECT PHASE :	ABD0081-CD-05	
				POP 2	THIS PRINT AND ITS COPYRIGHT ARE THE PROPERTY OF APEX COMMUNICATIONS SDN BHD	