

TECHNICAL PROPOSAL

POP2 ABA7035 SEKOLAH KEBANGSAAN (FELDA) LEPANG NENERING (D-SIDE)

Company Name : WabTech Sdn Bhd
Company Address : 101-1, Jalan Metro Sendayan, 71950, Seremban, Negeri Sembilan.
Prepared By : Mohd Farid bin Othman
Date : 20/02/2025



Point A



Point B

Starting Point

Site / Boundary Name : Sekolah Kebangsaan (FELDA) Lelang Nenering
Address : Jalan Melati, FELDA Lelang Nenering, 33100, Pengkalan Hulu, Perak.
District : Pengkalan Hulu
Postcode : 33100
State : Perak
GPS Coordinate : 5.690121, 101.080185
LRD : A

End Point

Site / Boundary Name : FELDA Lelang Nenering, Pengkalan Hulu
Address : Jalan Bunga Raya, Taman Sri Jaya, 33100, Pengkalan Hulu, Perak.
District : Pengkalan Hulu
Postcode : 33100
State : Perak
GPS Coordinate : 5.693055, 101.076876
LRD : B



PROJEK PENYEDIAAN DAN PENYELENGGARAAN POINT OF PRESENCE (POP)
FASA 2: HAB INFRASTRUTUK GENTIAN OPTIK BERHAMPIRAN DENGAN
SEKOLAH, KAWASAN PERINDUSTRIAN, PREMIS KERAJAAN DAN KOMUNITI
SEKITARNYA OLEH KEMENTERIAN KOMUNIKASI MALAYSIA – ZON UTARA
(KKMM.400-11/17/132(1))



WABTECH SDN BHD
(1398887-X)

1.0 WORK SUMMARY

NO	PROPOSED DISTANCE AND METHOD	UNIT	QUANTITY
1	Horizontal Directional Drilling (HDD)	m	0
2	Carriage Way Open Trench (CW)	m	0
3	Grass Verge Open Trenching (GV)	m	0
4	Micro Trenching (MT)	m	0
Total			

NO	OTHER INFORMATION	UNIT	QUANTITY
1	Installation of Short Span ADSS Fibre Cables	m	3718m
2	Install New Pole	ea	82
3	Install New JRC7 Manhole	ea	0
4	Install GI Riser 100mm	ea	0
5	Install Fiber Distribution Point and Closure (Splicing, Termination and Testing)	ea	20
6	Estimated Time Required for Completion	days	30



PROJEK PENYEDIAAN DAN PENYELENGGARAAN POINT OF PRESENCE (POP)
FASA 2: HAB INFRASTRUTUK GENTIAN OPTIK BERHAMPIRAN DENGAN
SEKOLAH, KAWASAN PERINDUSTRIAN, PREMIS KERAJAAN DAN KOMUNITI
SEKITARNYA OLEH KEMENTERIAN KOMUNIKASI MALAYSIA – ZON UTARA
(KKMM.400-11/17/132(1))



WABTECH SDN BHD
(1398887-X)

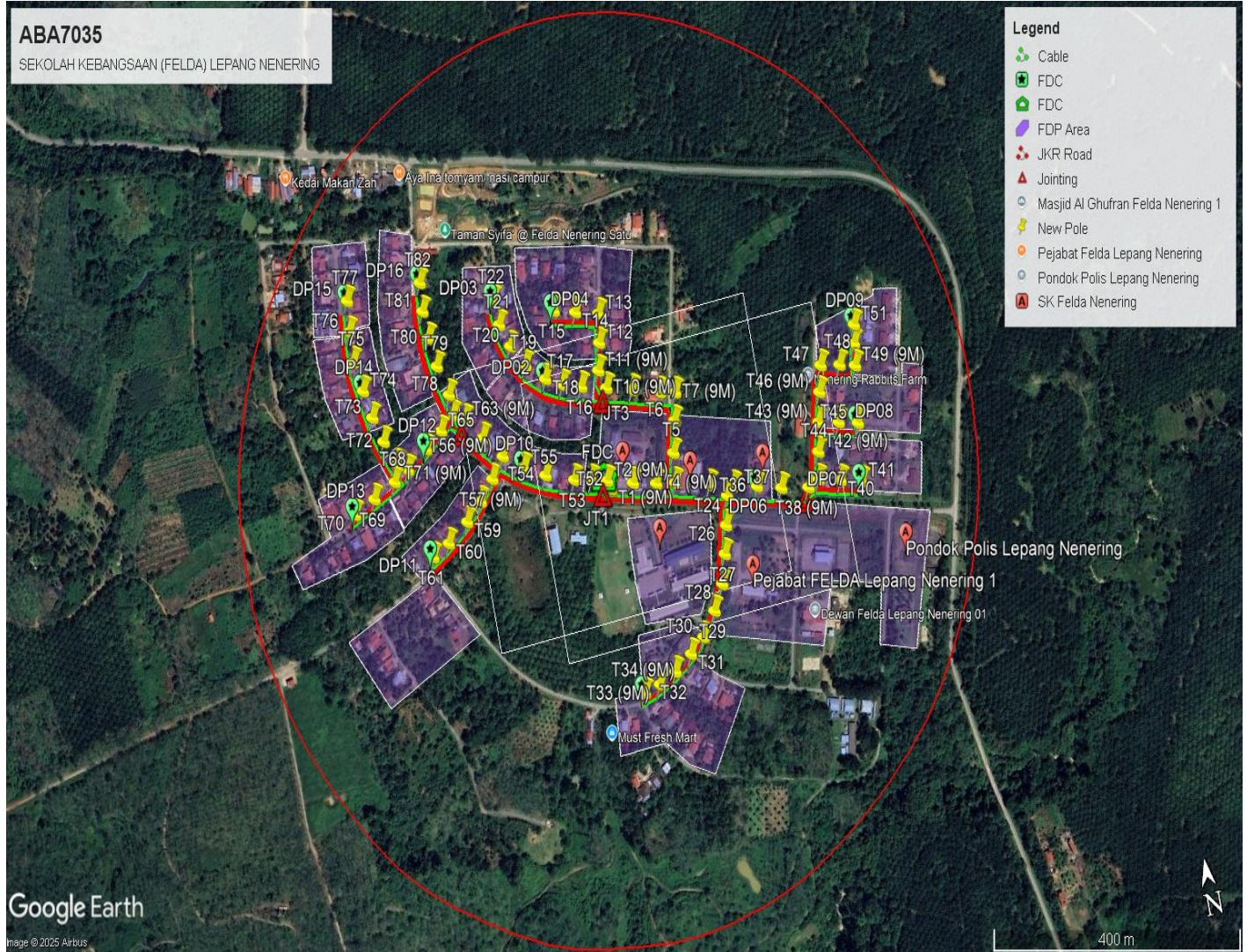
2.0 LOCAL AUTHORITY SUMMARY

Daerah Pengkalan Hulu

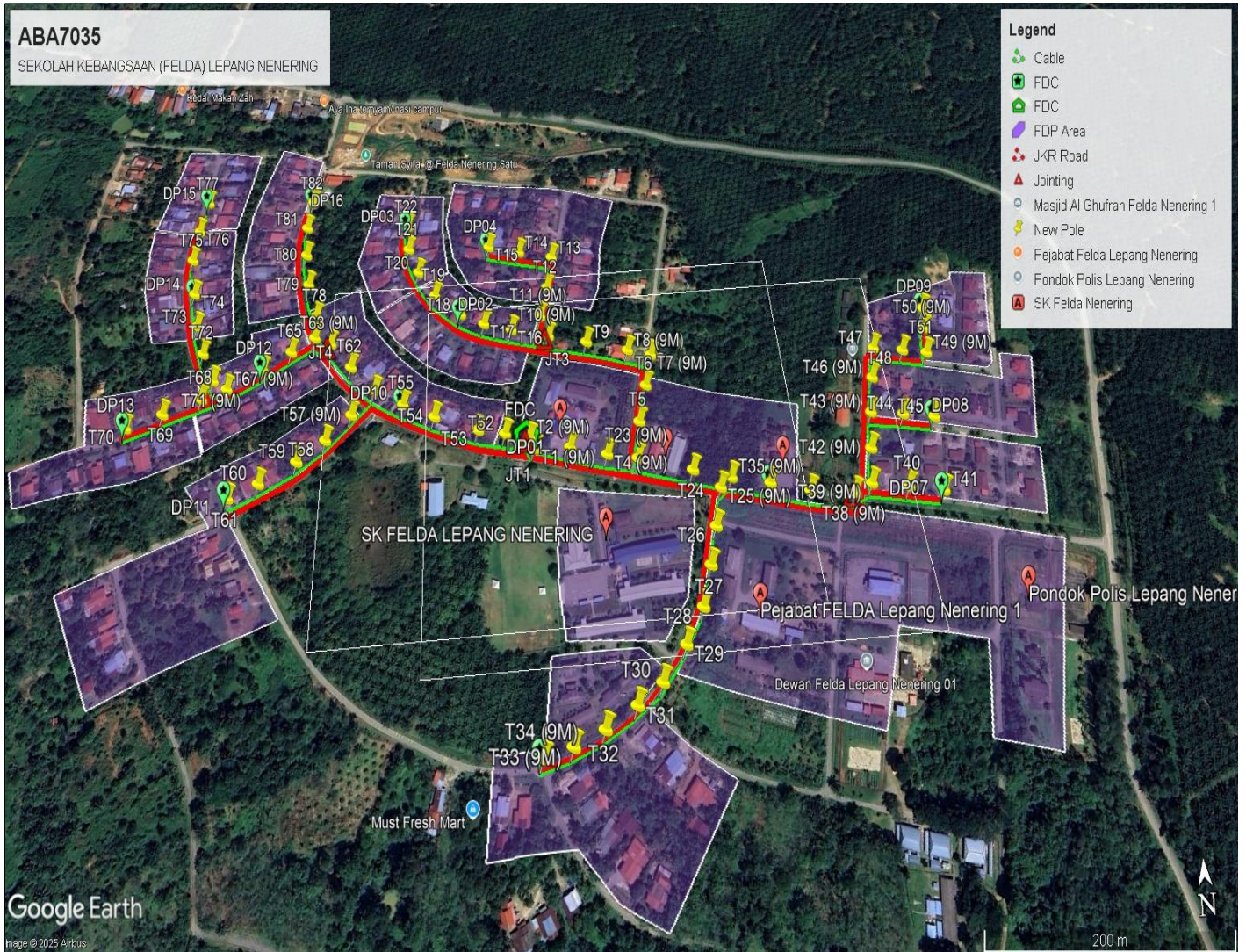
NO	ITEMS	Owner	Quantity	Distance (m)
1	HDD	JKR	-	-
		Majlis	-	-
		PDT	-	-
2	New Pole	JKR	82	2779
		Majlis	-	-
		PDT	-	-
Total Distance (m)				2779

3.0 SITE PLAN (KMZ)

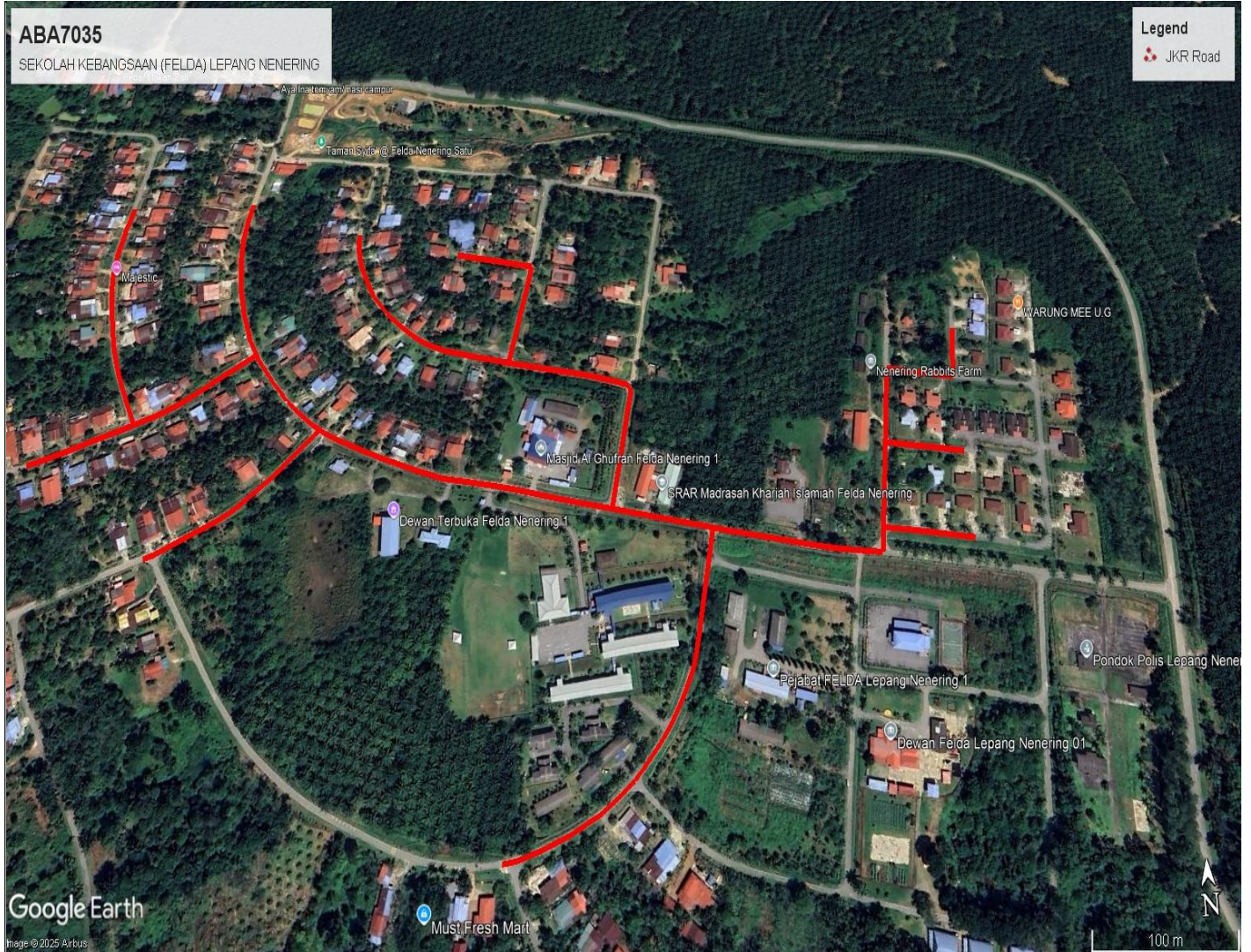
3.1 Overview Site Area



3.2 Site boundry



3.3 Road Boundry



4.0 PROPOSED NEW POLE

Proposed New Pole Coordinate					
No.	Pole Number	Distance (m)	Latitude	Longitude	Local Authority
1	FDC POLE	10	5.690228	101.080142	JKR
2	T001 (Pole 9m)	12	5.690125	101.080183	JKR
3	T002 (Pole 9m)	42	5.690228	101.080142	JKR
4	T003	38	5.690123	101.080506	JKR
5	T004 (Pole 9m)	31	5.690043	101.080837	JKR
6	T005	41	5.690331	101.081159	JKR
7	T006	36	5.690687	101.081255	JKR
8	T007 (Pole 9m)	25	5.691002	101.081337	JKR
9	T008 (Pole 9m)	45	5.691051	101.081118	JKR
10	T009	42	5.691168	101.080726	JKR
11	T010 (Pole 9m)	26	5.691268	101.080363	JKR
12	T011 (Pole 9m)	35	5.691489	101.080291	JKR
13	T012	37	5.691796	101.080373	JKR
14	T013	38	5.692126	101.080437	JKR
15	T014	35	5.692213	101.080107	JKR
16	T015	41	5.692295	101.079802	JKR
17	T016	31	5.691360	101.080007	JKR
18	T017	28	5.691445	101.079740	JKR
19	T018	37	5.691560	101.079513	JKR
20	T019	34	5.691775	101.079261	JKR
21	T020	33	5.692035	101.079094	JKR
22	T021	33	5.692308	101.078988	JKR
23	T022	38	5.692611	101.078965	JKR
24	T023 (Pole 9m)	56	5.689990	101.081109	JKR
25	T024	16	5.689856	101.081596	JKR
26	T025 (Pole 9m)	38	5.689682	101.081824	JKR
27	T026	37	5.689354	101.081734	JKR
28	T027	38	5.689038	101.081642	JKR
29	T028	36	5.688714	101.081532	JKR
30	T029	38	5.688438	101.081353	JKR
31	T030	29	5.688181	101.081129	JKR
32	T031	34	5.688034	101.080909	JKR
33	T032	30	5.687887	101.080642	JKR
34	T033 (Pole 9m)	27	5.687794	101.080388	JKR
35	T034 (Pole 9m)	39	5.687745	101.080150	JKR
36	T035 (Pole 9m)	39	5.689771	101.081934	JKR
37	T036	39	5.689690	101.082276	JKR
38	T037	44	5.689595	101.082621	JKR
39	T038 (Pole 9m)	19	5.689518	101.083005	JKR

No.	Pole Number	Distance (m)	Latitude	Longitude	Local Authority
40	T039 (Pole 9m)	35	5.689574	101.083166	JKR
41	T040	33	5.689497	101.083477	JKR
42	T041	35	5.689421	101.083768	JKR
43	T042 (Pole 9m)	37	5.689884	101.083233	JKR
44	T043 (Pole 9m)	32	5.690211	101.083309	JKR
45	T044	31	5.690149	101.083594	JKR
46	T045	39	5.690080	101.083863	JKR
47	T046 (Pole 9m)	34	5.690546	101.083401	JKR
48	T047	31	5.690842	101.083483	JKR
49	T048	25	5.690787	101.083754	JKR
50	T049 (Pole 9m)	28	5.690730	101.083971	JKR
51	T050 (Pole 9m)	24	5.690981	101.084012	JKR
52	T051	25	5.691189	101.084059	JKR
53	T052	28	5.690285	101.079922	JKR
54	T053	47	5.690343	101.079677	JKR
55	T054	37	5.690483	101.079280	JKR
56	T055	37	5.690633	101.078988	JKR
57	T056 (Pole 9m)	33	5.690829	101.078713	JKR
58	T057 (Pole 9m)	34	5.690611	101.078509	JKR
59	T058	34	5.690397	101.078285	JKR
60	T059	40	5.690212	101.078046	JKR
61	T060	31	5.690032	101.077732	JKR
62	T061	40	5.689926	101.077476	JKR
63	T062	37	5.691101	101.078471	JKR
64	T063 (Pole 9m)	20	5.691362	101.078262	JKR
65	T064 (Pole 9m)	28	5.691448	101.078100	JKR
66	T065	33	5.691310	101.077890	JKR
67	T066	40	5.691152	101.077638	JKR
68	T067 (Pole 9m)	26	5.690980	101.077323	JKR
69	T068	39	5.690885	101.077107	JKR
70	T069	37	5.690758	101.076779	JKR
71	T070	19	5.690645	101.076469	JKR
72	T071 (Pole 9m)	36	5.691076	101.077182	JKR
73	T072	36	5.691373	101.077043	JKR
74	T073	36	5.691677	101.076940	JKR
75	T074	40	5.692000	101.076878	JKR
76	T075	39	5.692351	101.076819	JKR
77	T076	39	5.692703	101.076834	JKR
78	T077	41	5.693057	101.076875	JKR
79	T078	41	5.691691	101.078091	JKR
80	T079	38	5.692048	101.077987	JKR
81	T080	35	5.692390	101.077937	JKR
82	T081	37	5.692709	101.077920	JKR



PROJEK PENYEDIAAN DAN PENYELENGGARAAN POINT OF PRESENCE (POP)
FASA 2: HAB INFRASTRUTUK GENTIAN OPTIK BERHAMPIRAN DENGAN
SEKOLAH, KAWASAN PERINDUSTRIAN, PREMIS KERAJAAN DAN KOMUNITI
SEKITARNYA OLEH KEMENTERIAN KOMUNIKASI MALAYSIA – ZON UTARA
(KKMM.400-11/17/132(1))

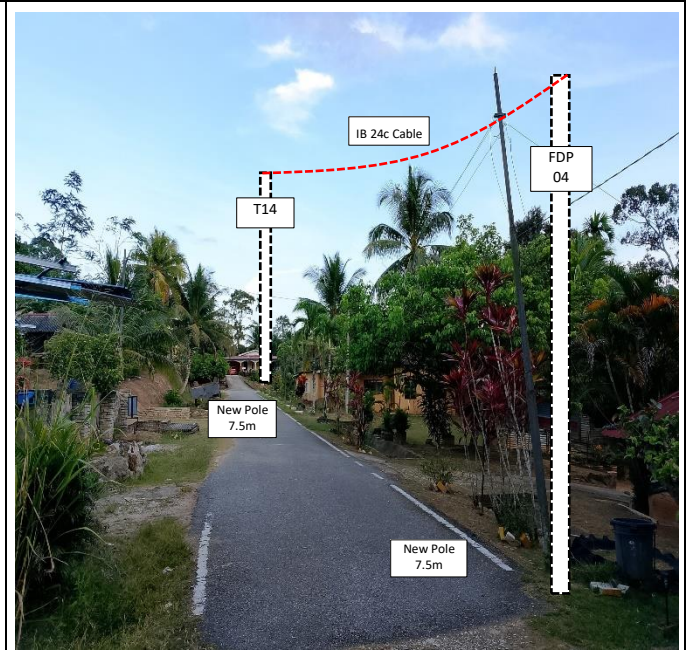
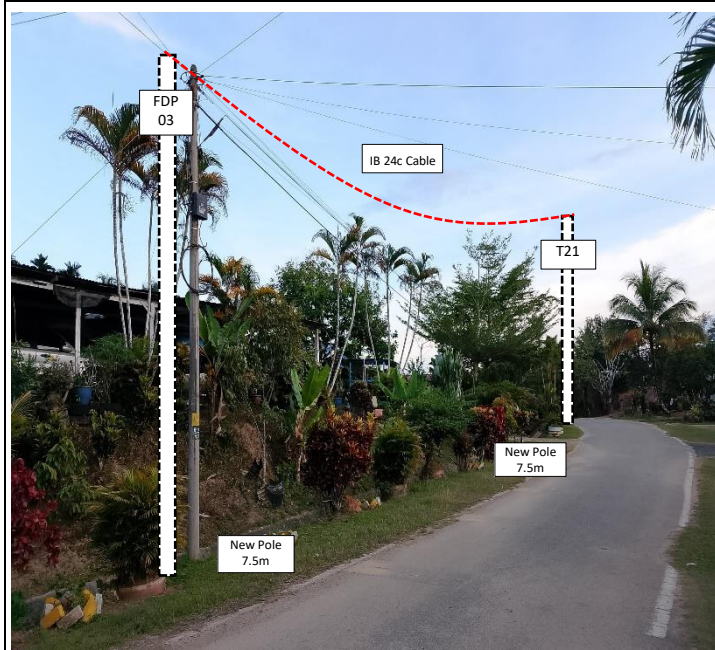
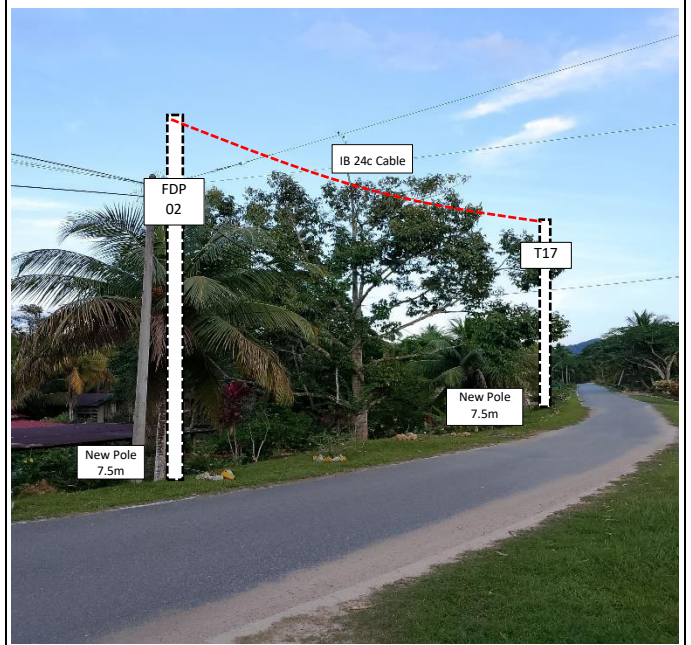
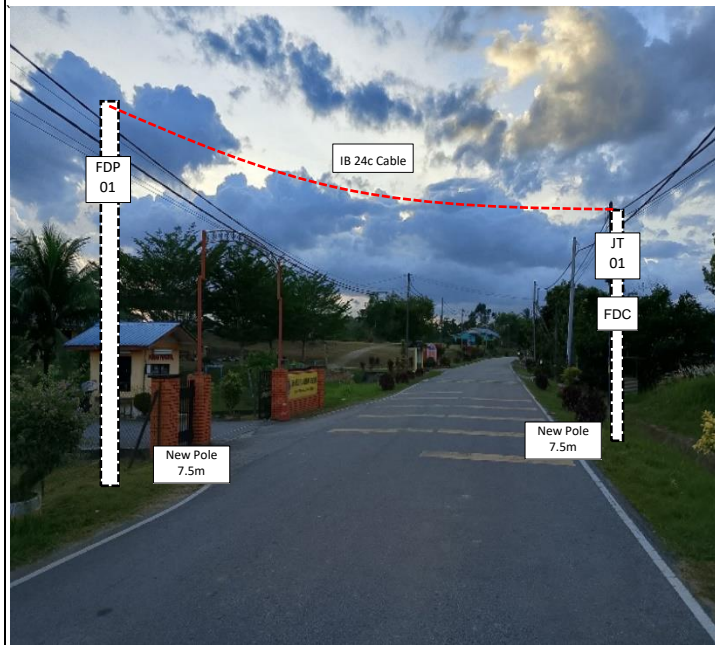


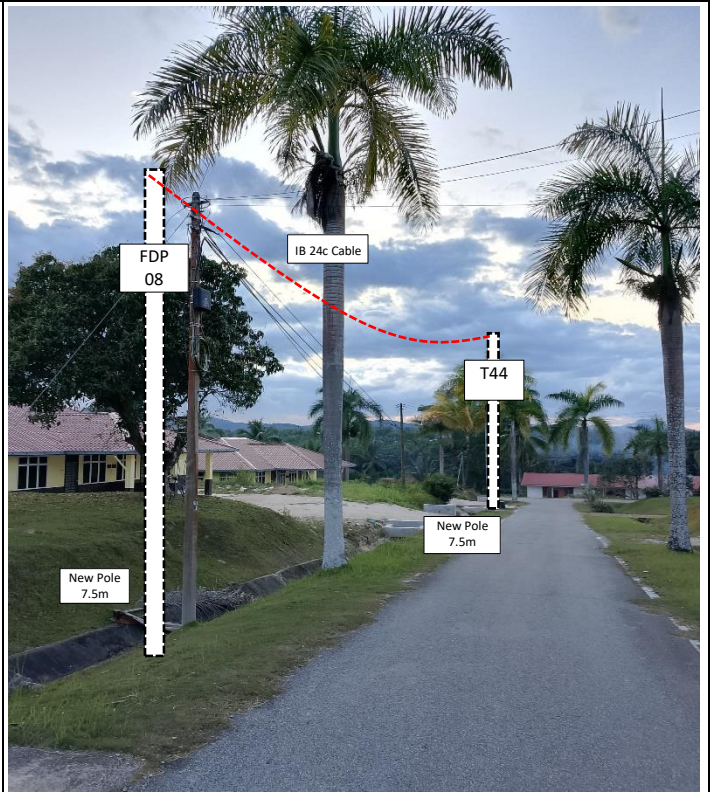
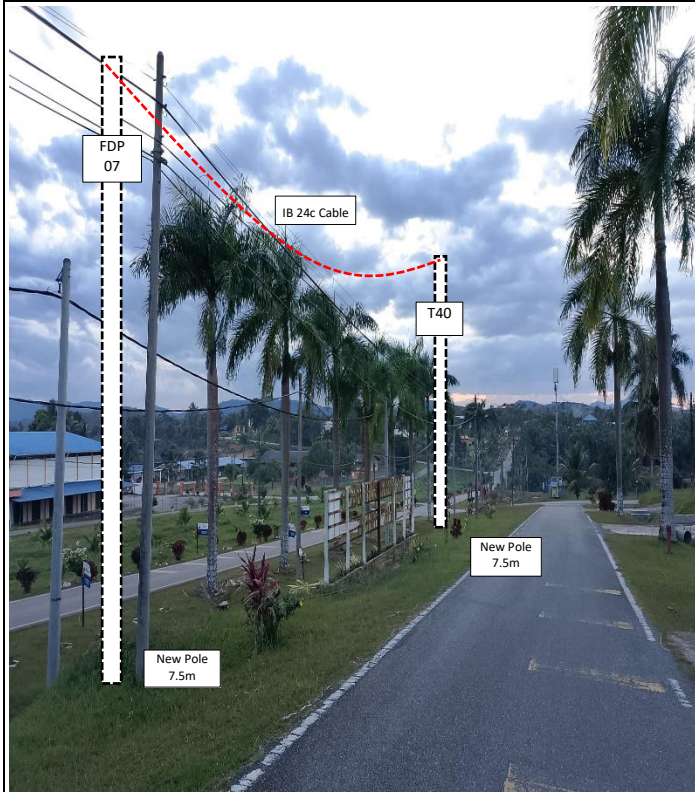
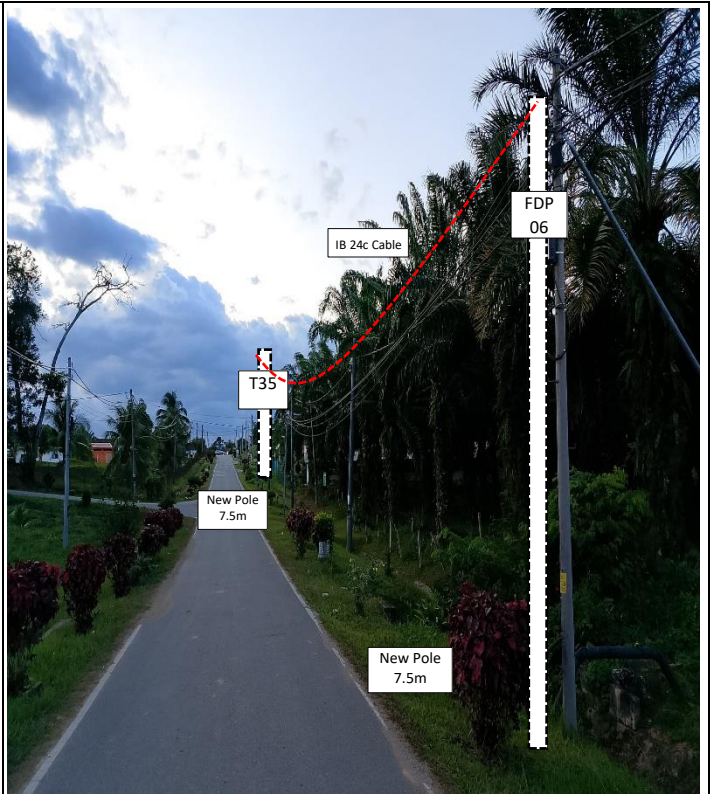
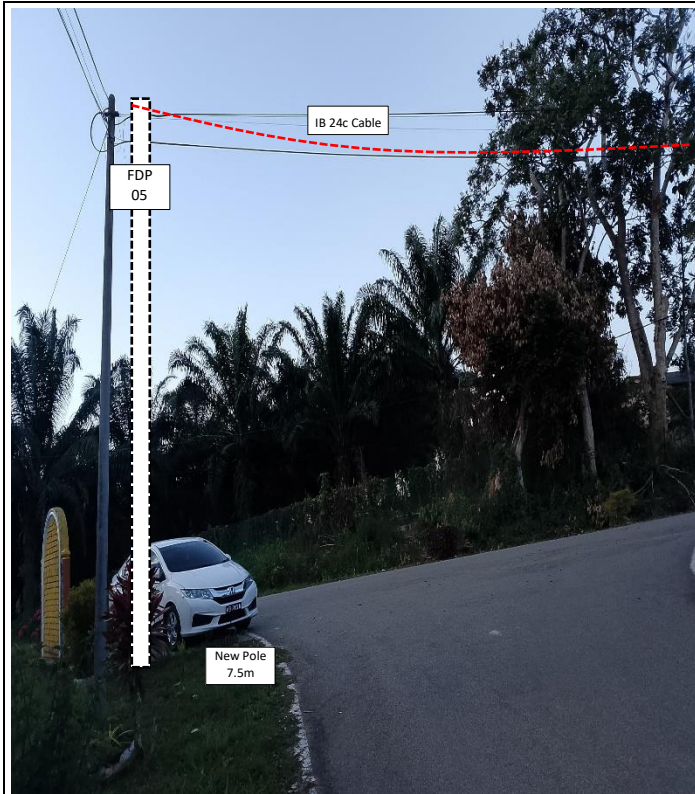
WABTECH SDN BHD
(1398387-0)

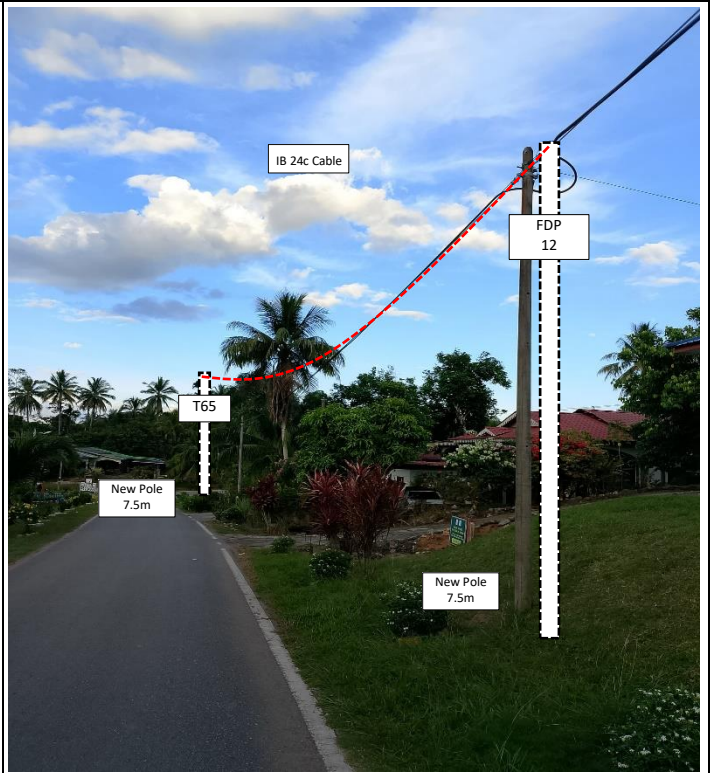
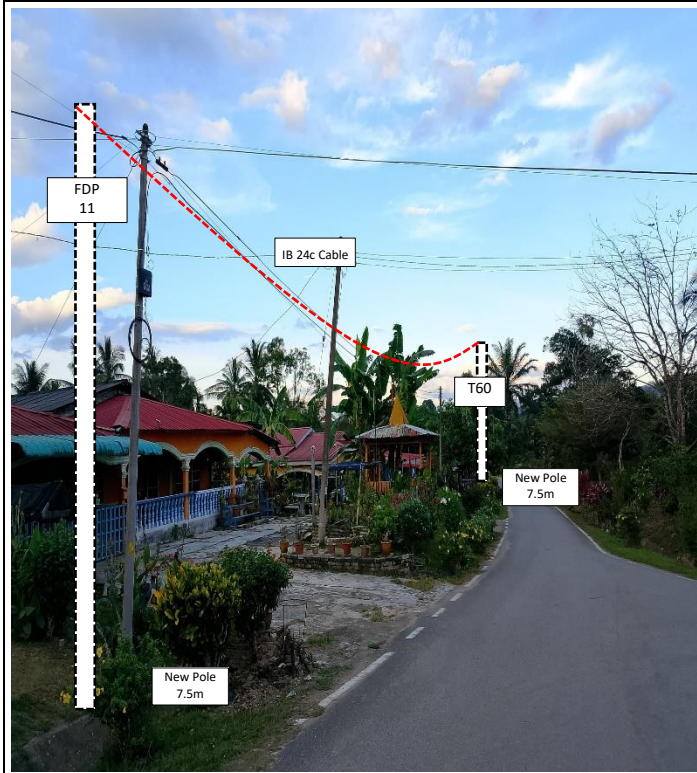
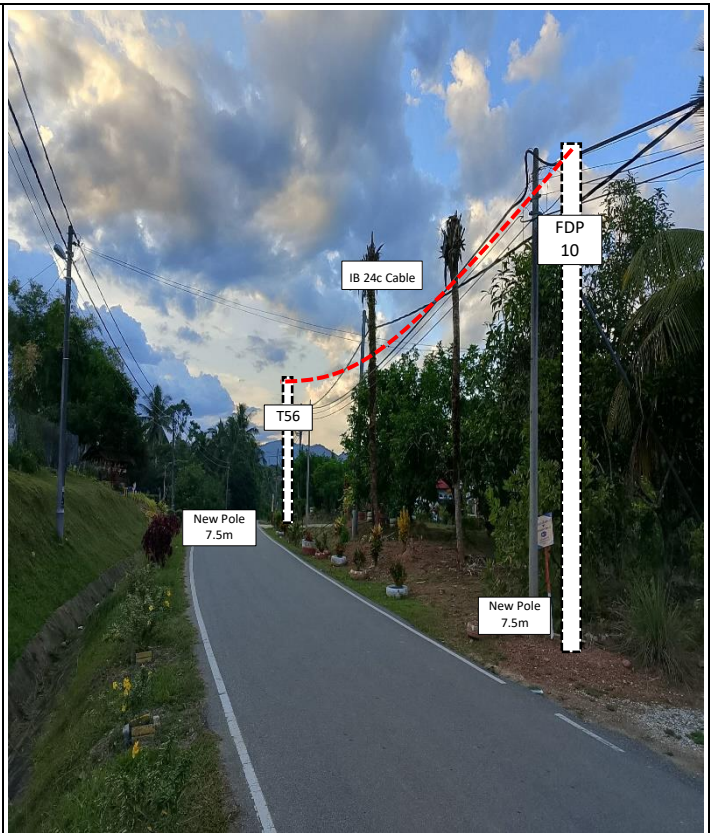
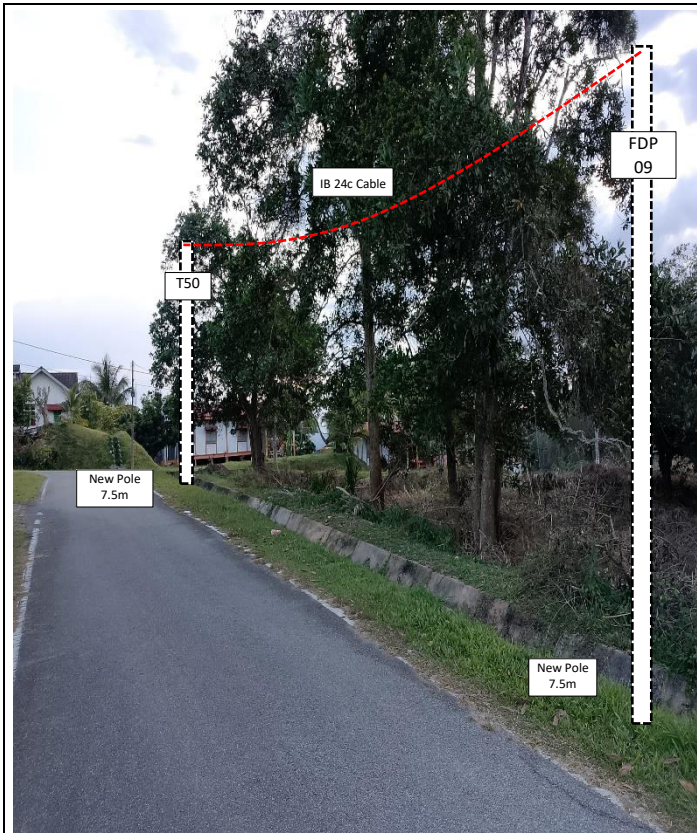
No.	Pole Number	Distance (m)	Latitude	Longitude	Local Authority
83	T082	37	5.693038	101.077950	JKR

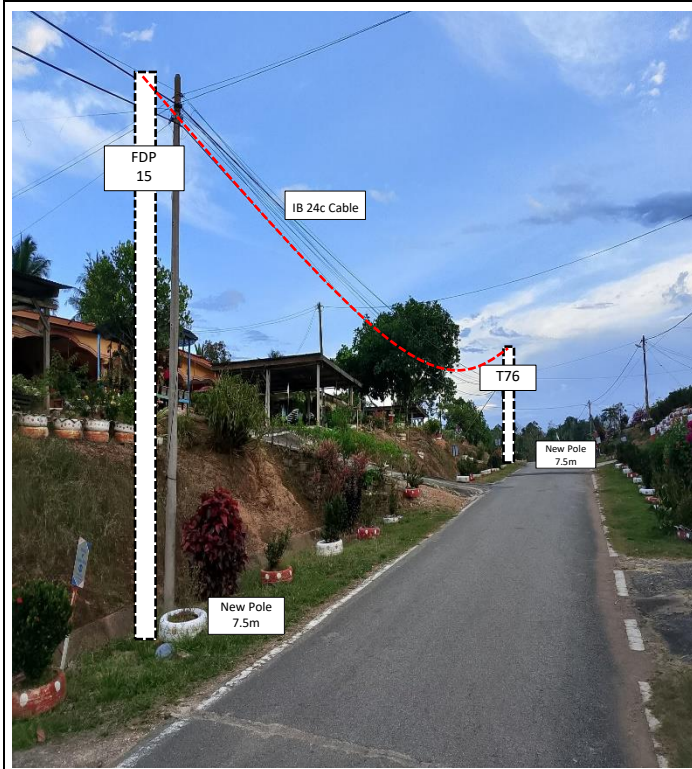
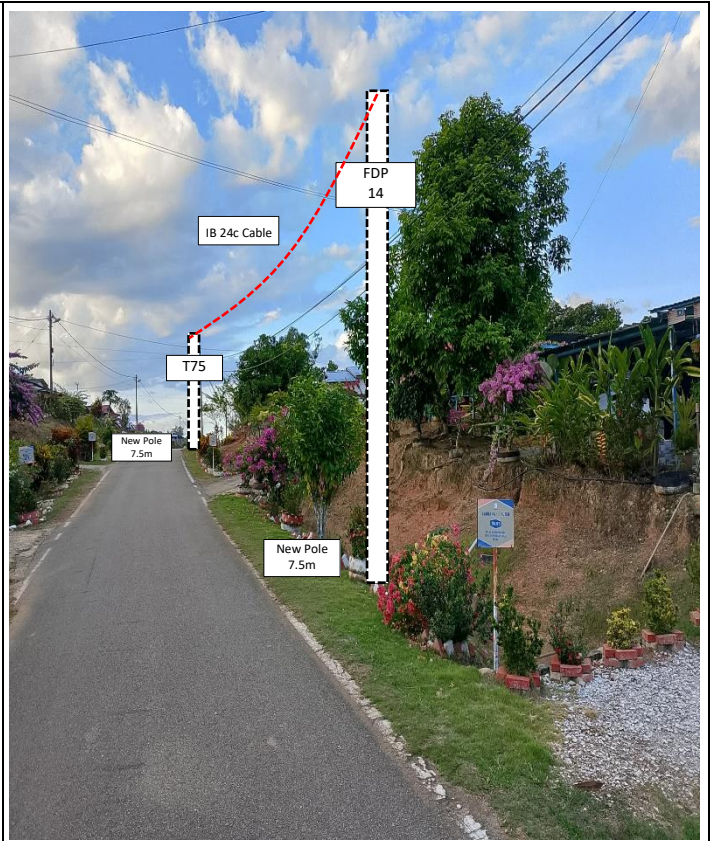
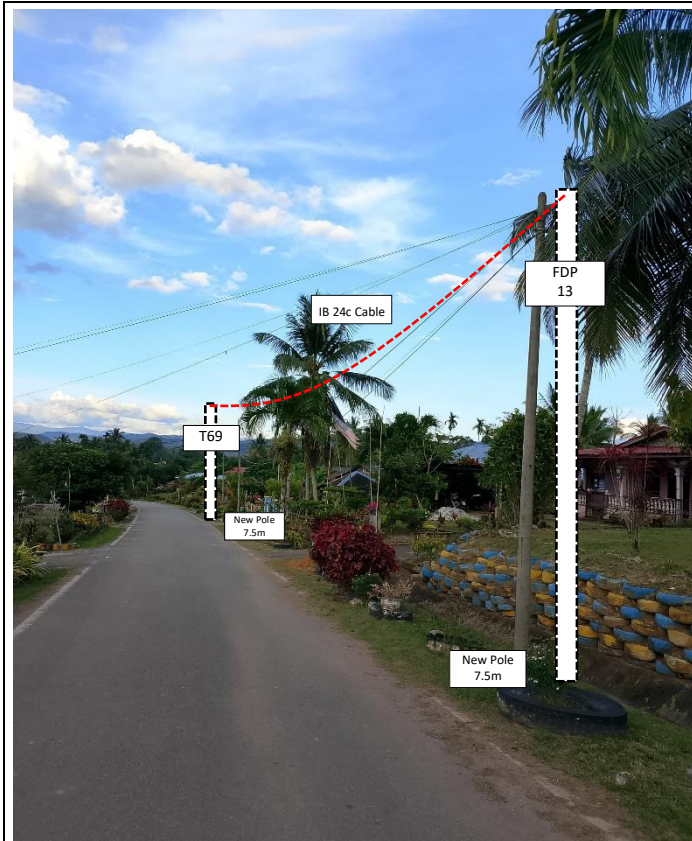
No.	Type	7.5m	9m	Total
1	No. of poles	57	25	82

5.0 SITE PHOTOS - PROPOSED NEW POLE











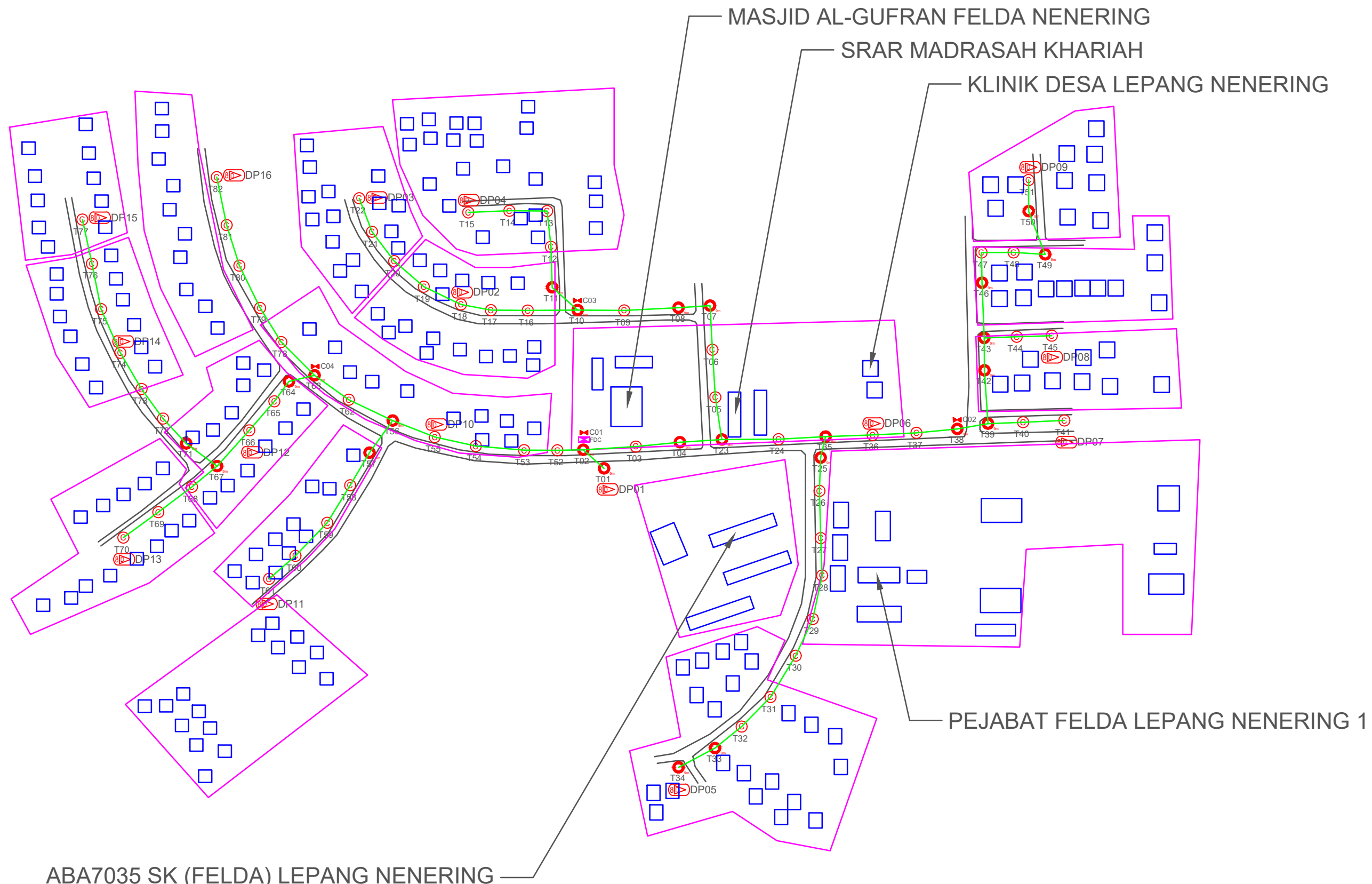
PROJEK PENYEDIAAN DAN PENYELENGGARAAN POINT OF PRESENCE (POP)
FASA 2: HAB INFRASTRUTUK GENTIAN OPTIK BERHAMPIRAN DENGAN
SEKOLAH, KAWASAN PERINDUSTRIAN, PREMIS KERAJAAN DAN KOMUNITI
SEKITARNYA OLEH KEMENTERIAN KOMUNIKASI MALAYSIA – ZON UTARA
(KKMM.400-11/17/132(1))



WABTECH SDN BHD
(1398387-X)

6.0 3rd PARTIES DEPENDENCIES

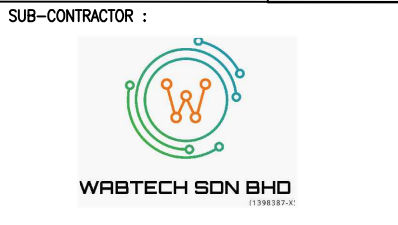
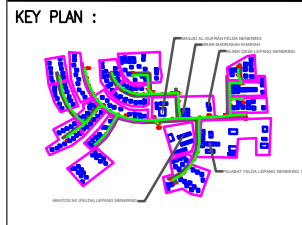
NO	LOCAL COUNCIL / AUTHORITY	REMARK
1	Majlis Daerah Pengkalan Hulu	-
2	JKR Daerah Pengkalan Hulu	2779m



ABA7035 SK (FELDA) LEPANG NENERING

TOTAL HOME PASSES: 128 UNITS

LEGEND											
	12C FOC		Installed 1:4 splitter in FDC		Installed Pole (9m)		New Manhole(JRC7)		Tension Small / Tension Big		MH NO.
	24C FOC		FDP with (1:8) splitter		Installed Riser		House Number		Existing Manhole		Existing TNB Pole NO.
	48C FOC		Closure		Suspension Big		Existing TNB Pole		Closure NO.		New Pole NO.
	96C FOC		New Manhole (PT)		Suspension Small		LOOP		FDP NO.		SEE A-A in this page
	144C FOC		Installed Pole (7.5M)		FDC		FDP Boundary		FDC NO.		SEE SHEET XXXX

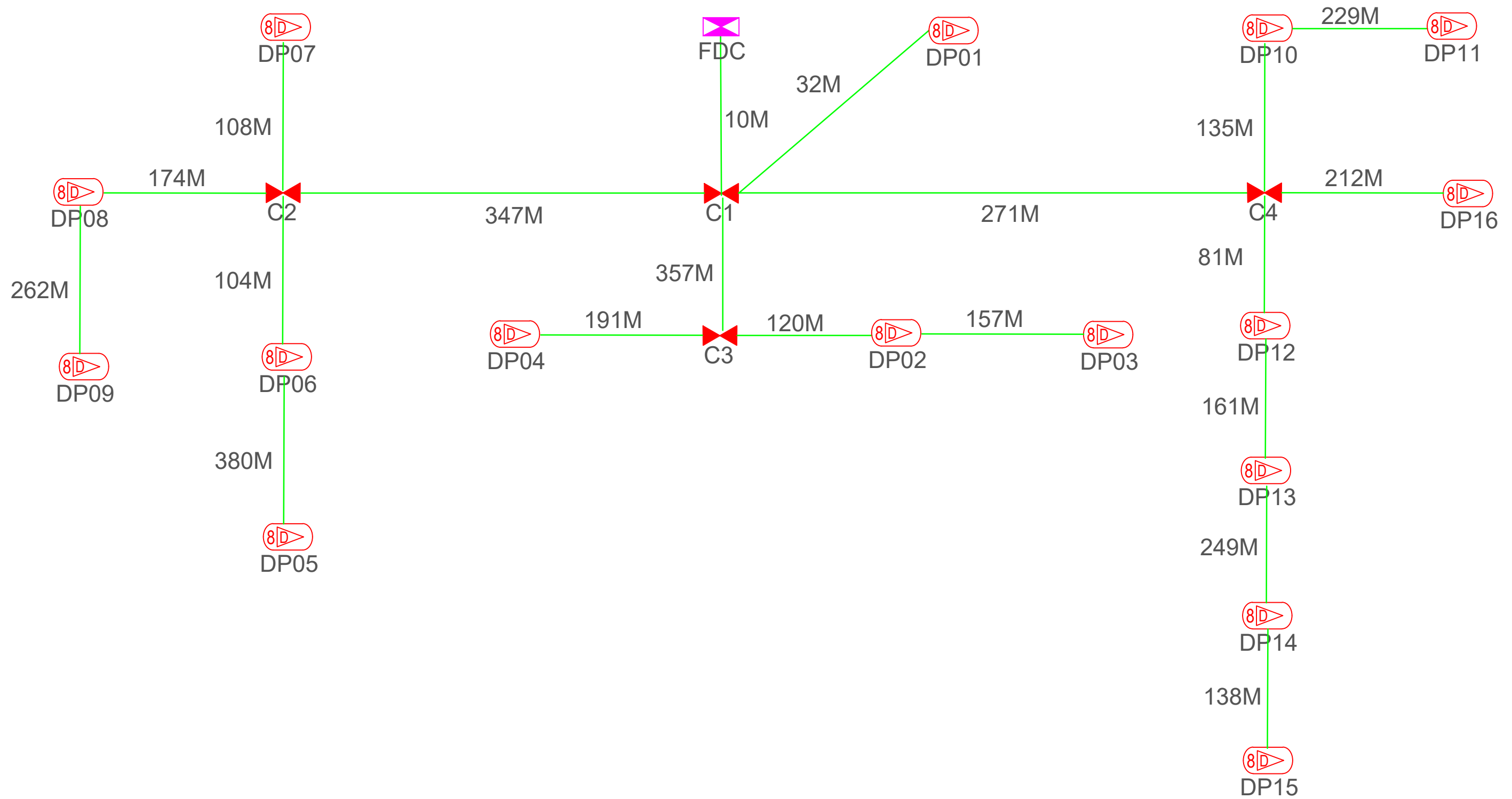


PROJECT TITLE:
CONTRACT FOR THE PROVISION OF SUPPLY, INSTALLATION, AND COMMISSIONING OF FTTH NETWORK INFRASTRUCTURE - POP 2 PROJECT D-SIDE - ABA7035 - SK (FELDA) LEPANG NENERING

DRAWING TITLE:
ABA7035 SK (FELDA) LEPANG NENERING

PROJECT PHASE:
PROJECT PHASE

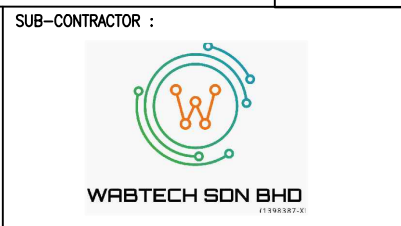
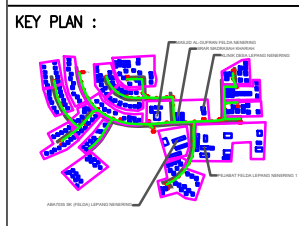
Design By	ENGINEER	Date	DATE
Drawn By	CAD ENGINEER	Scale	NTS
Checked By	ENGINEER	Job Number	JOB/NUMBER
DRAWING NUMBER :		Sheet :	
DRAWING/NUMBER		1/1	
THIS PRINT AND ITS COPYRIGHT ARE THE PROPERTY			
		Size : A3	



TOTAL FOC DISTANCE: 3,718 METERS

LEGEND

	12C FOC	Installed 1:4 splitter in FDC		Installed Pole (9m)		New Manhole(JRC7)		Tension Small / Tension Big		MH NO.
	24C FOC	FDP with (1:8) splitter		Installed Riser		House Number		Existing Manhole		Existing TNB Pole NO.
	48C FOC	Closure		Suspension Big		Existing TNB Pole		Closure NO.		New Pole NO.
	96C FOC	New Manhole (PT)		Suspension Small		LOOP		FDP NO.		SEE A-A in this page
	144C FOC	Installed Pole (7.5M)		FDC		FDP Boundary		FDC NO.		SEE SHEET XXXX



PROJECT TITLE:
CONTRACT FOR THE PROVISION OF SUPPLY, INSTALLATION, AND COMMISSIONING OF FTTX NETWORK INFRASTRUCTURE - POP 2 PROJECT D-SIDE - ABA7035 - SK (FELDA) LEPANG NENERING

DRAWING TITLE:
ABA7035 SK (FELDA) LEPANG NENERING

PROJECT PHASE:
PROJECT PHASE

Design By	ENGINEER	Date	DATE
Drawn By	CAD ENGINEER	Scale	NTS
Checked By	ENGINEER	Job Number	JOB/NUMBER
DRAWING NUMBER :		Sheet :	
DRAWING/NUMBER		1/1	
THIS PRINT AND ITS COPYRIGHT ARE THE PROPERTY		Size :	
		A3	