

## TECHNICAL PROPOSAL

### POP2 ABC2135 SEKOLAH JENIS KEBANGSAAN CINA KAMPUNG NALLA (D-SIDE)

|                 |  |
|-----------------|--|
| Company Name    | : SEGALA DELIMA (M) SDN BHD  |
| Company Address | : No. 8, Jalan Ampang Baru 6B, Pusat Perdagangan Baru, 31350 Ipoh, Perak |
| Prepared By     | : Nasrohaizan Bin Mustaffa   |
| Date            | : 4/12/2024  |



#### Starting Point

|                      |   |
|----------------------|---|
| Site / Boundary Name | : Sekolah Jenis Kebangsaan (C) Kampung Nala |
| District             | : Tronoh                                    |
| Postcode             | : 31750                                     |
| State                | : Perak                                     |
| GPS Coordinate       | : <a href="#">4.422638, 100.979137</a>      |
| LRD                  | : A   |

#### End Point

|                      |  |
|----------------------|--|
| Site / Boundary Name | : Desa Tronoh                          |
| Address              | : Laluan Tronoh 5                      |
| District             | : Batu Gajah                           |
| Postcode             | : 31750                                |
| State                | : Perak                                |
| GPS Coordinate       | : <a href="#">4.429998, 100.978332</a> |
| LRD                  | : B                                    |

## 1.0 WORK SUMMARY

| NO    | PROPOSED DISTANCE AND METHOD          | UNIT | QUANTITY |
|-------|---------------------------------------|------|----------|
| 1     | Horizontal Directional Drilling (HDD) | m    | 0        |
| 2     | Carriage Way Open Trench(CW)          | m    | 0        |
| 3     | Grass Verge Open Trenching (GV)       | m    | 0        |
| 4     | Micro Trenching (MT)                  | m    | 0        |
| Total |                                       |      | 0        |

| NO | OTHER INFORMATION  | UNIT | QUANTITY |
|----|--|------|----------|
| 1  | Installation of Short Span ADSS Fiber Cables                                     | m    | 2170     |
| 2  | Install New Pole   | ea   | 64       |
| 3  | Install New JRC7 Manhole   | ea   | 0        |
| 4  | Install GI Riser 100mm   | ea   | 0        |
| 5  | Install Fiber Distribution Point and Closure (Splicing, Termination and Testing) | ea   | 18       |
| 6  | Estimated Time Required for Completion   | days | 30       |

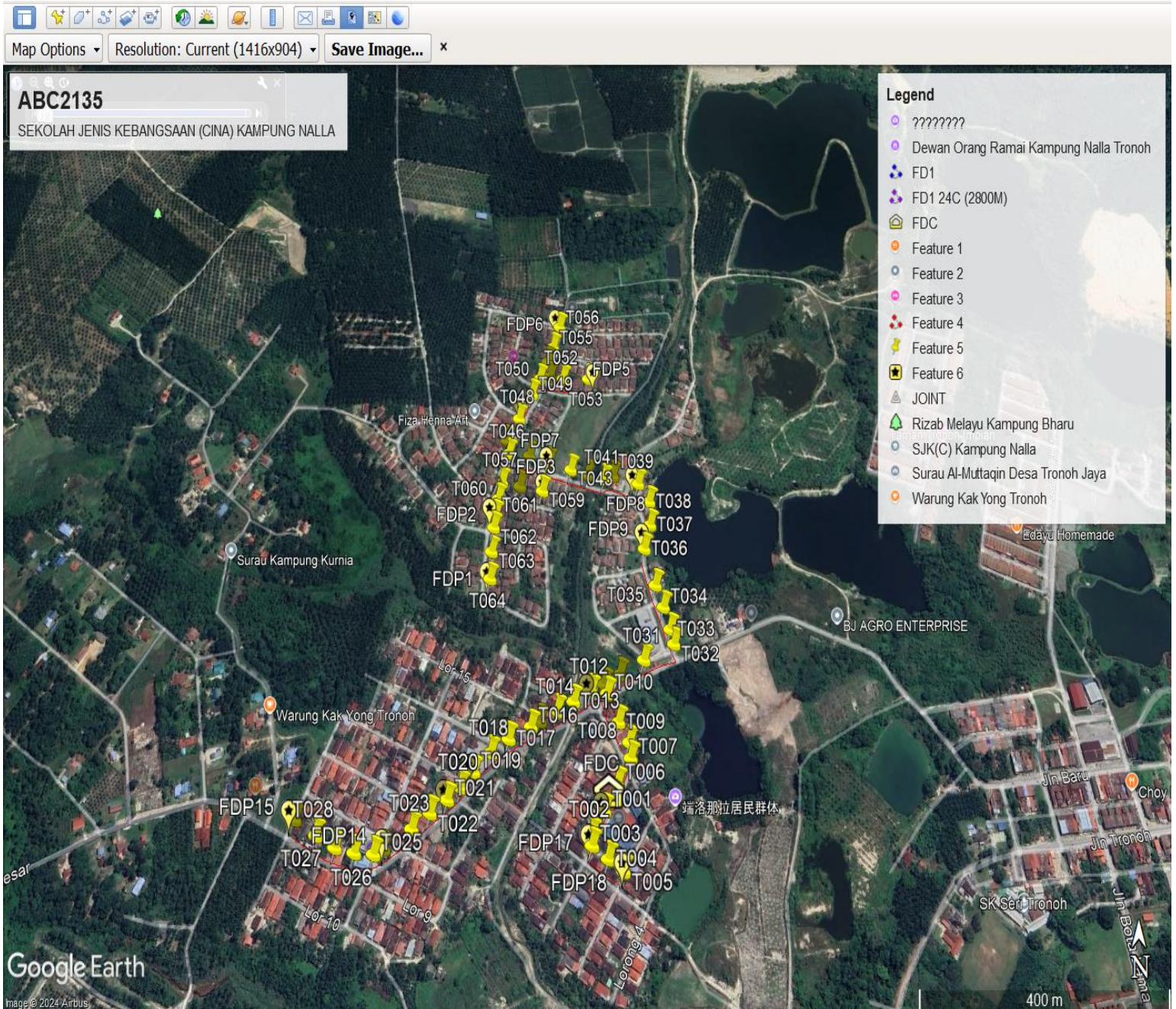
## 2.0 LOCAL AUTHORITY SUMMARY

Daerah Batu Gajah

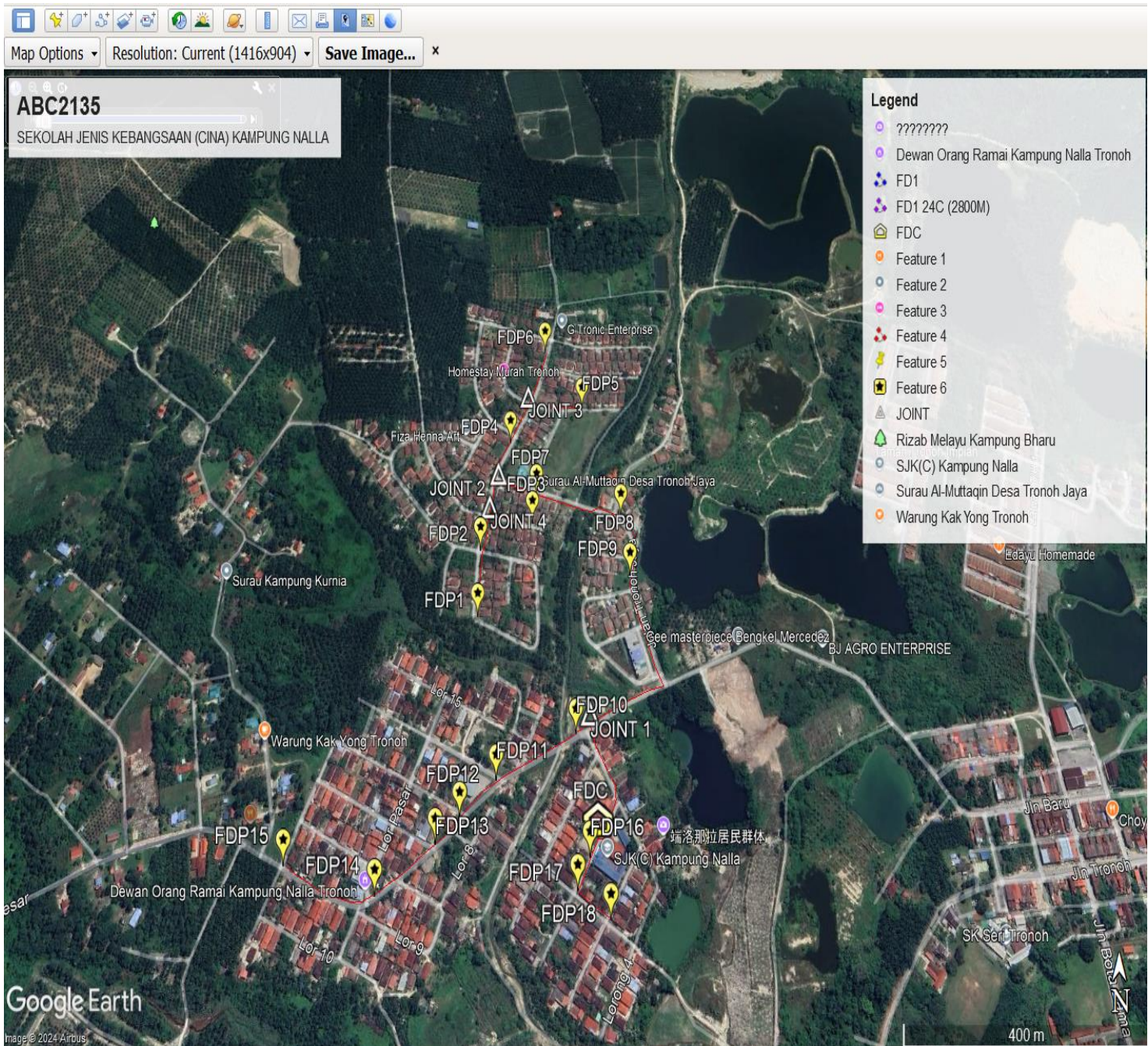
| NO                        | ITEMS    | Owner                 | Quantity | Distance (m) |
|---------------------------|----------|-----------------------|----------|--------------|
| 1                         | HDD      | JKR                   | -        | -            |
|                           |          | Majlis                | -        | -            |
|                           |          | Estate / Private Land | -        | -            |
| 2                         | New Pole | JKR                   | -        | -            |
|                           |          | Majlis                | 64       | 2170         |
|                           |          | Estate / Private Land | -        | -            |
| <b>Total Distance (m)</b> |          |                       |          | <b>2170</b>  |

### 3.0 SITE PLAN (KMZ)

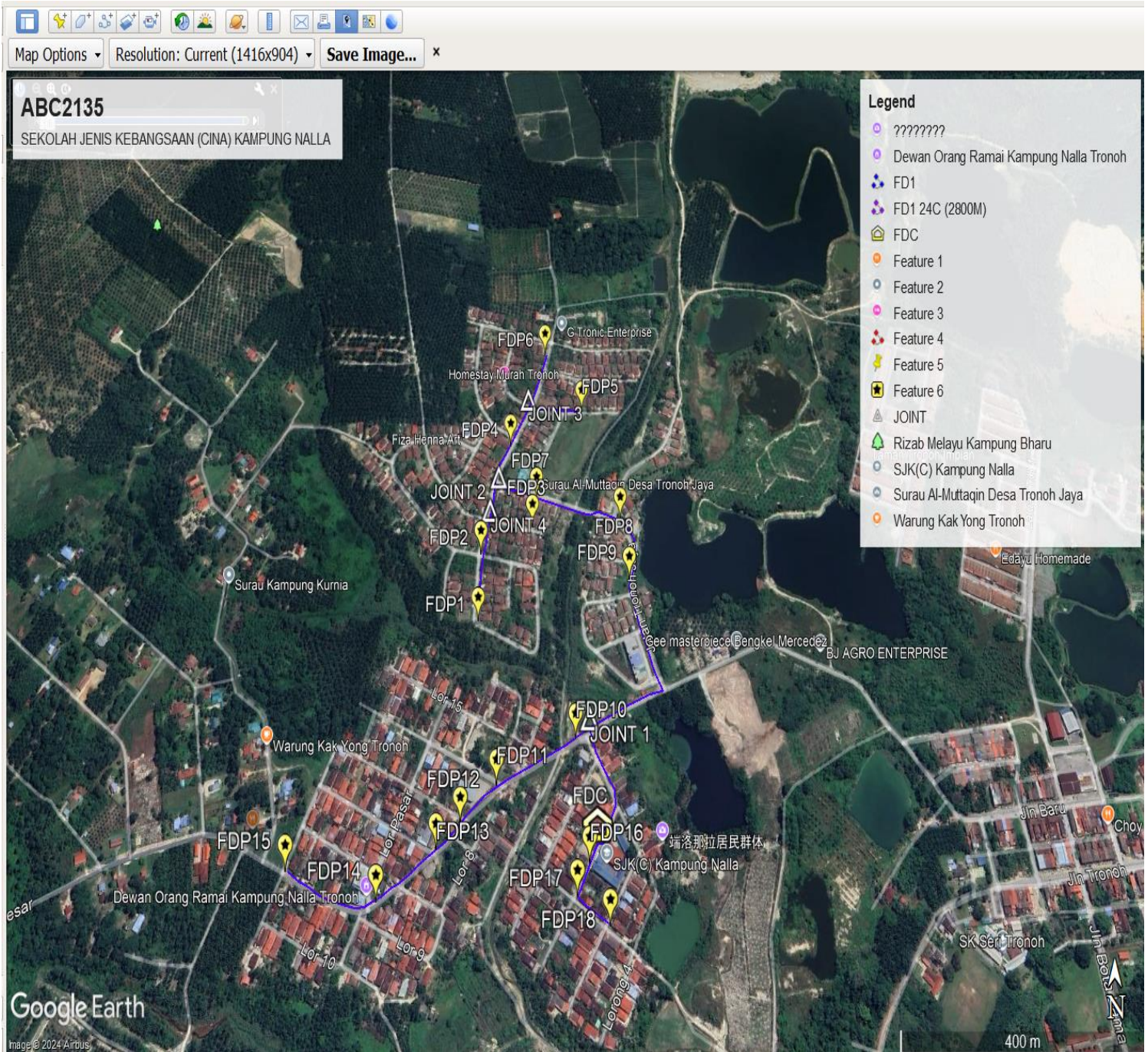
#### 3.1 Overview Site Area (Propose New Pole)



### 3.2 Proposed FDP and Closure



### 3.3 Site Plan - KMZ Routing (All Local Authority)



Red Colour - JKR Road  
Blue Colour - Majlis Road

#### 4.0 PROPOSED NEW MANHOLE

| Proposed New Manhole Coordinate |                |              |          |           |                 |
|---------------------------------|----------------|--------------|----------|-----------|-----------------|
| No.                             | Manhole Number | Distance (m) | Latitude | Longitude | Local Authority |
| 1                               | MH01           | -            | -        | -         | -               |
| 2                               | MH02           | -            | -        | -         | -               |

#### 4.1 PROPOSED NEW POLE

| Proposed New Pole Coordinate |             |              |          |            |                          |
|------------------------------|-------------|--------------|----------|------------|--------------------------|
| No.                          | Pole Number | Distance (m) | Latitude | Longitude  | Local Authority          |
| 1                            | T001        | 30m          | 4.422526 | 100.979053 | Majlis Daerah Batu Gajah |
| 2                            | T002        | 30m          | 4.422231 | 100.978859 | Majlis Daerah Batu Gajah |
| 3                            | T003        | 30m          | 4.422104 | 100.978865 | Majlis Daerah Batu Gajah |
| 4                            | T004        | 30m          | 4.421944 | 100.979110 | Majlis Daerah Batu Gajah |
| 5                            | T005        | 30m          | 4.421798 | 100.979340 | Majlis Daerah Batu Gajah |
| 6                            | T006        | 30m          | 4.422869 | 100.979262 | Majlis Daerah Batu Gajah |
| 7                            | T007        | 30m          | 4.423200 | 100.979475 | Majlis Daerah Batu Gajah |
| 8                            | T008        | 30m          | 4.423406 | 100.979456 | Majlis Daerah Batu Gajah |
| 9                            | T009        | 30m          | 4.423668 | 100.979290 | Majlis Daerah Batu Gajah |
| 10                           | T010        | 30m          | 4.424057 | 100.979113 | Majlis Daerah Batu Gajah |
| 11                           | T011        | 30m          | 4.424184 | 100.979062 | Majlis Daerah Batu Gajah |
| 12                           | T012        | 30m          | 4.424095 | 100.978856 | Majlis Daerah Batu Gajah |
| 13                           | T013        | 30m          | 4.423948 | 100.978569 | Majlis Daerah Batu Gajah |
| 14                           | T014        | 30m          | 4.423820 | 100.978312 | Majlis Daerah Batu Gajah |
| 15                           | T015        | 30m          | 4.423682 | 100.978036 | Majlis Daerah Batu Gajah |
| 16                           | T016        | 30m          | 4.423600 | 100.977896 | Majlis Daerah Batu Gajah |
| 17                           | T017        | 30m          | 4.423434 | 100.977550 | Majlis Daerah Batu Gajah |
| 18                           | T018        | 30m          | 4.423257 | 100.977275 | Majlis Daerah Batu Gajah |
| 19                           | T019        | 30m          | 4.423012 | 100.977013 | Majlis Daerah Batu Gajah |
| 20                           | T020        | 30m          | 4.422818 | 100.976825 | Majlis Daerah Batu Gajah |
| 21                           | T021        | 30m          | 4.422662 | 100.976628 | Majlis Daerah Batu Gajah |
| 22                           | T022        | 30m          | 4.422494 | 100.976376 | Majlis Daerah Batu Gajah |
| 23                           | T023        | 30m          | 4.422296 | 100.976114 | Majlis Daerah Batu Gajah |
| 24                           | T024        | 30m          | 4.422062 | 100.975701 | Majlis Daerah Batu Gajah |
| 25                           | T025        | 30m          | 4.421995 | 100.975557 | Majlis Daerah Batu Gajah |
| 26                           | T026        | 30m          | 4.422011 | 100.975264 | Majlis Daerah Batu Gajah |
| 27                           | T027        | 30m          | 4.422071 | 100.974965 | Majlis Daerah Batu Gajah |
| 28                           | T028        | 30m          | 4.422218 | 100.974660 | Majlis Daerah Batu Gajah |
| 29                           | T029        | 30m          | 4.422411 | 100.974311 | Majlis Daerah Batu Gajah |
| 30                           | T030        | 30m          | 4.424318 | 100.979323 | Majlis Daerah Batu Gajah |
| 31                           | T031        | 30m          | 4.424520 | 100.979719 | Majlis Daerah Batu Gajah |
| 32                           | T032        | 30m          | 4.424742 | 100.980220 | Majlis Daerah Batu Gajah |
| 33                           | T033        | 30m          | 4.424949 | 100.980165 | Majlis Daerah Batu Gajah |

|    |      |     |          |            |                          |
|----|------|-----|----------|------------|--------------------------|
| 34 | T034 | 30m | 4.425270 | 100.980064 | Majlis Daerah Batu Gajah |
| 35 | T035 | 30m | 4.425591 | 100.979940 | Majlis Daerah Batu Gajah |
| 36 | T036 | 30m | 4.426140 | 100.979769 | Majlis Daerah Batu Gajah |
| 37 | T037 | 30m | 4.426503 | 100.979877 | Majlis Daerah Batu Gajah |
| 38 | T038 | 30m | 4.426867 | 100.979870 | Majlis Daerah Batu Gajah |
| 39 | T039 | 30m | 4.427152 | 100.979685 | Majlis Daerah Batu Gajah |
| 40 | T040 | 30m | 4.427280 | 100.979243 | Majlis Daerah Batu Gajah |
| 41 | T041 | 30m | 4.427227 | 100.979086 | Majlis Daerah Batu Gajah |
| 42 | T042 | 30m | 4.427296 | 100.978796 | Majlis Daerah Batu Gajah |
| 43 | T043 | 30m | 4.427368 | 100.978501 | Majlis Daerah Batu Gajah |
| 44 | T044 | 30m | 4.427477 | 100.978110 | Majlis Daerah Batu Gajah |
| 45 | T045 | 30m | 4.427585 | 100.977763 | Majlis Daerah Batu Gajah |
| 46 | T046 | 30m | 4.427615 | 100.977400 | Majlis Daerah Batu Gajah |
| 47 | T047 | 30m | 4.427837 | 100.977348 | Majlis Daerah Batu Gajah |
| 48 | T048 | 30m | 4.428204 | 100.977560 | Majlis Daerah Batu Gajah |
| 49 | T049 | 30m | 4.428629 | 100.977783 | Majlis Daerah Batu Gajah |
| 50 | T050 | 30m | 4.428899 | 100.977918 | Majlis Daerah Batu Gajah |
| 51 | T051 | 30m | 4.428942 | 100.978108 | Majlis Daerah Batu Gajah |
| 52 | T052 | 30m | 4.428894 | 100.978343 | Majlis Daerah Batu Gajah |
| 53 | T053 | 30m | 4.428898 | 100.978804 | Majlis Daerah Batu Gajah |
| 54 | T054 | 30m | 4.429200 | 100.978057 | Majlis Daerah Batu Gajah |
| 55 | T055 | 30m | 4.429466 | 100.978155 | Majlis Daerah Batu Gajah |
| 56 | T056 | 30m | 4.429840 | 100.978270 | Majlis Daerah Batu Gajah |
| 57 | T057 | 30m | 4.427145 | 100.977293 | Majlis Daerah Batu Gajah |
| 58 | T058 | 35m | 4.427086 | 100.977610 | Majlis Daerah Batu Gajah |
| 59 | T059 | 35m | 4.427011 | 100.978005 | Majlis Daerah Batu Gajah |
| 60 | T060 | 35m | 4.426878 | 100.977243 | Majlis Daerah Batu Gajah |
| 61 | T061 | 35m | 4.426618 | 100.977196 | Majlis Daerah Batu Gajah |
| 62 | T062 | 35m | 4.426436 | 100.977181 | Majlis Daerah Batu Gajah |
| 63 | T063 | 35m | 4.426067 | 100.977157 | Majlis Daerah Batu Gajah |
| 64 | T064 | 35m | 4.425666 | 100.977150 | Majlis Daerah Batu Gajah |

**5.0 SITE PHOTOS - PROPOSED HDD AND NEW MANHOLE  
(N/A)**

**6.0 SITE PHOTOS - PROPOSED NEW POLE**







| NO | LOCAL COUNCIL / AUTHORITY | REMARK |
|----|---------------------------|--------|
| 1  | Majlis Daerah Batu Gajah  | 2170m  |
| 2  | JKR Daerah Kinta          |        |





