

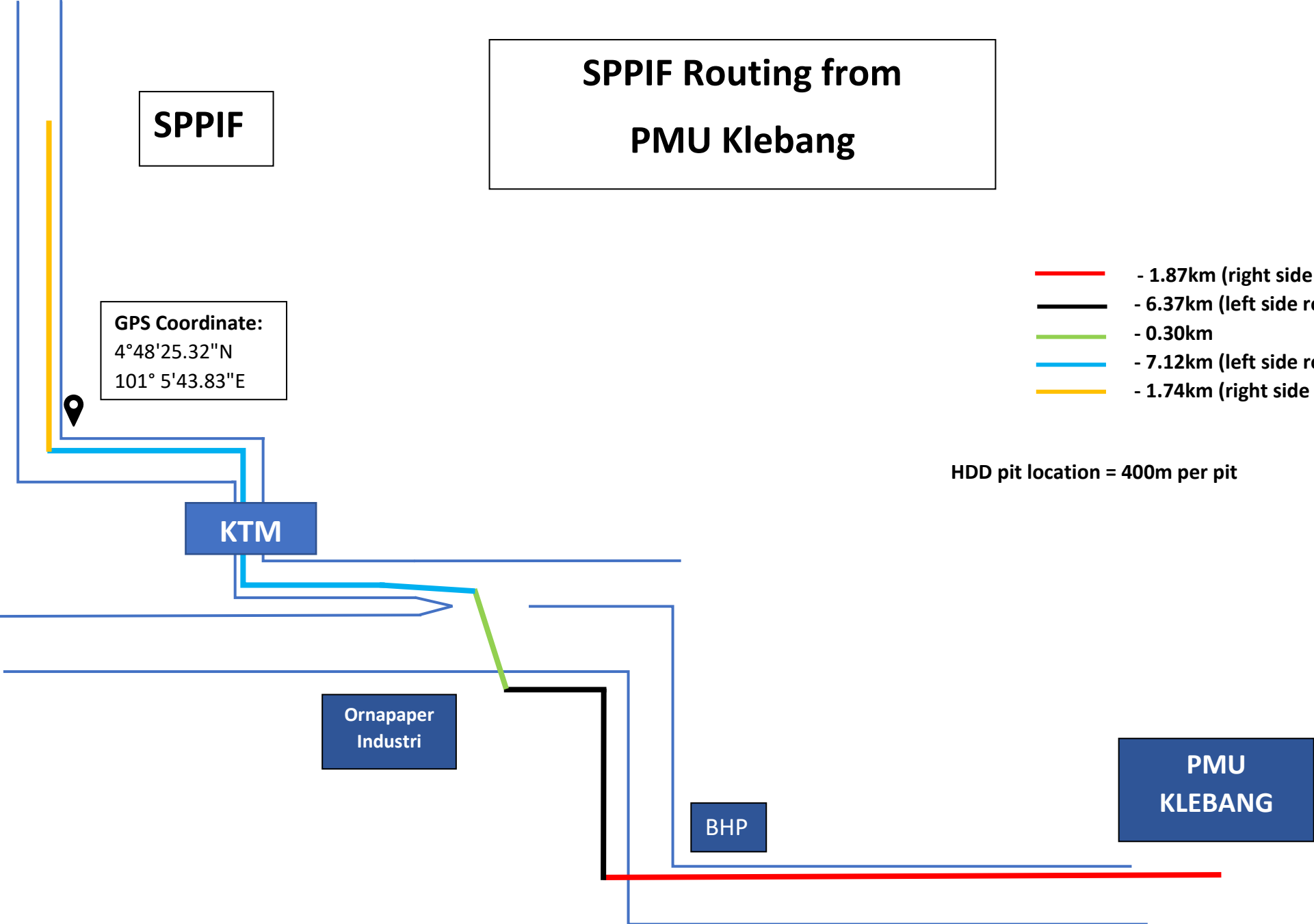
**SPPIF**

# SPPIF Routing from PMU Klebang

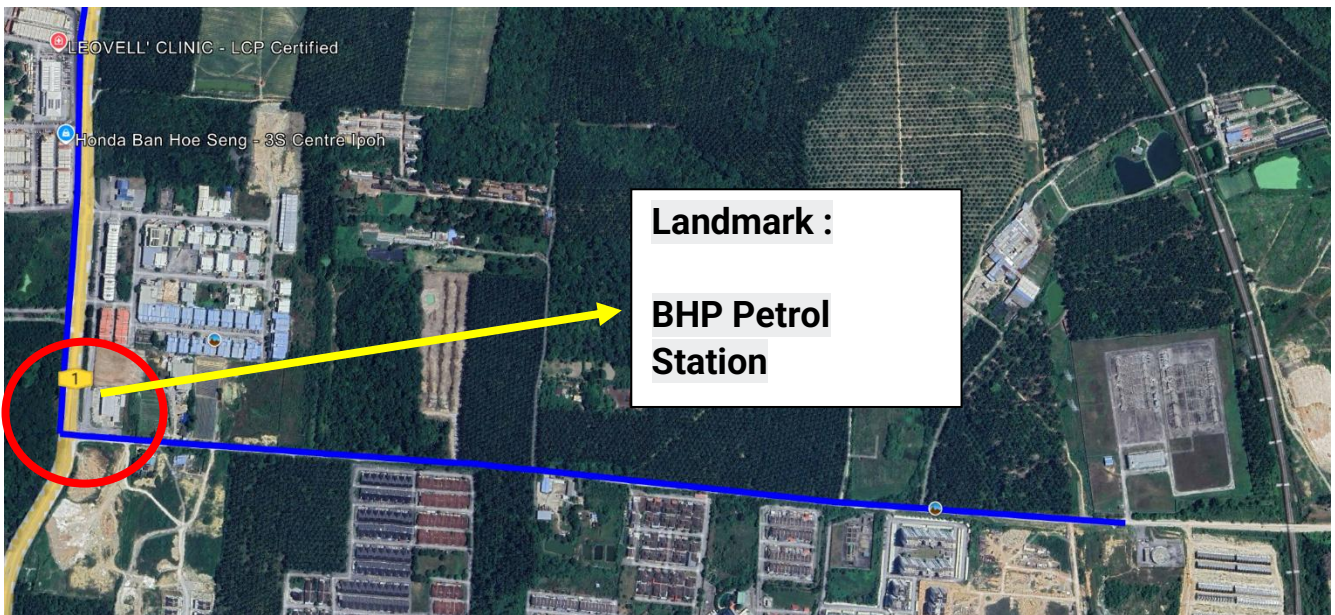
**GPS Coordinate:**  
4°48'25.32"N  
101° 5'43.83"E

- - 1.87km (right side routing)
- - 6.37km (left side routing)
- - 0.30km
- - 7.12km (left side routing)
- - 1.74km (right side routing)

HDD pit location = 400m per pit



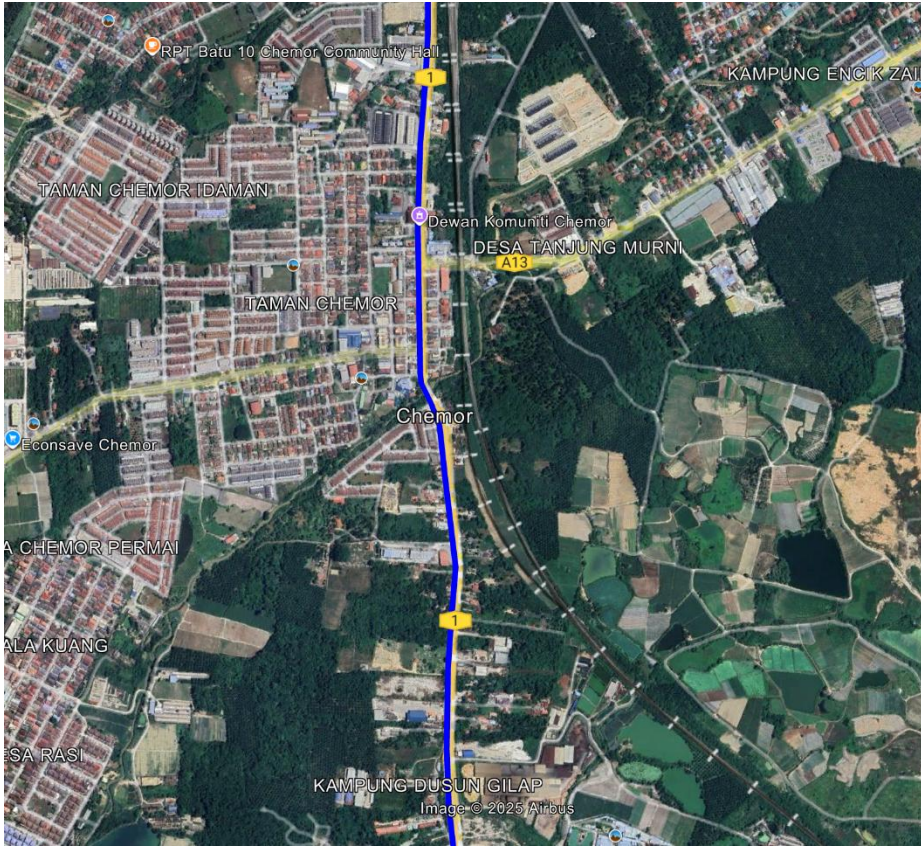
## A. From PMU Klebang to BHP Station (First Crossing)



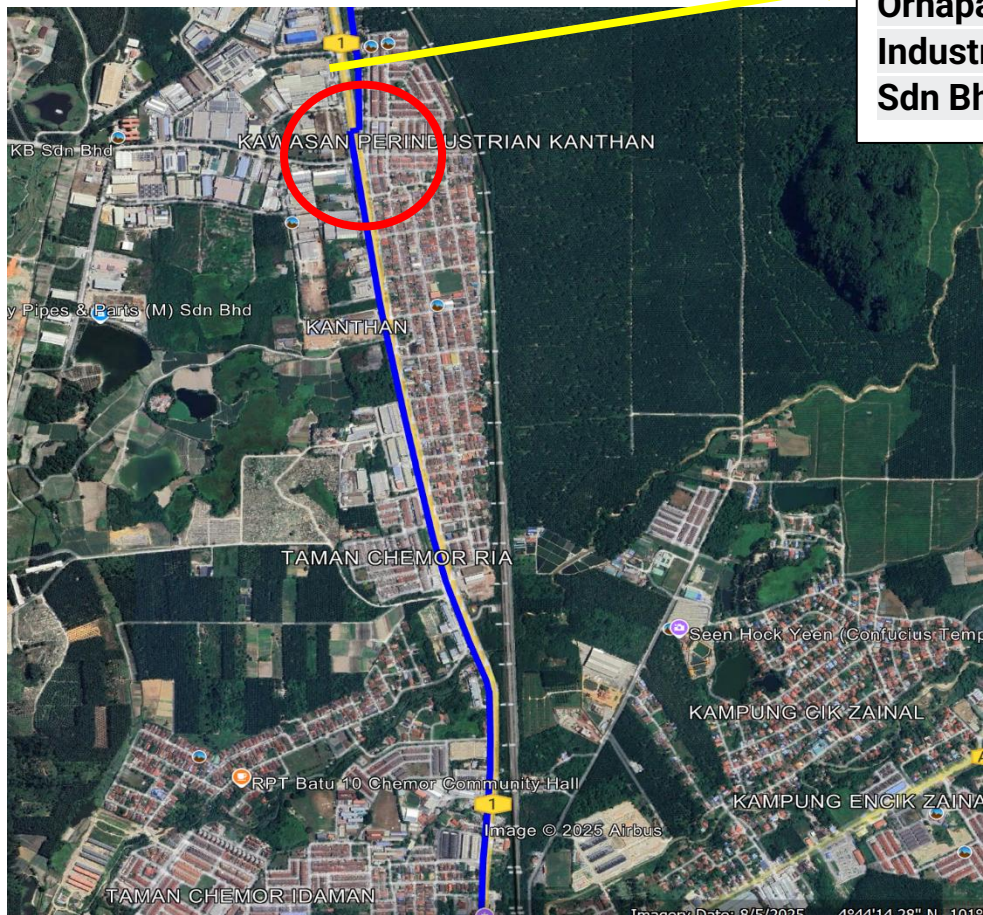
## B. Con't from First Crossing -1



### C. Con't from First Crossing -2

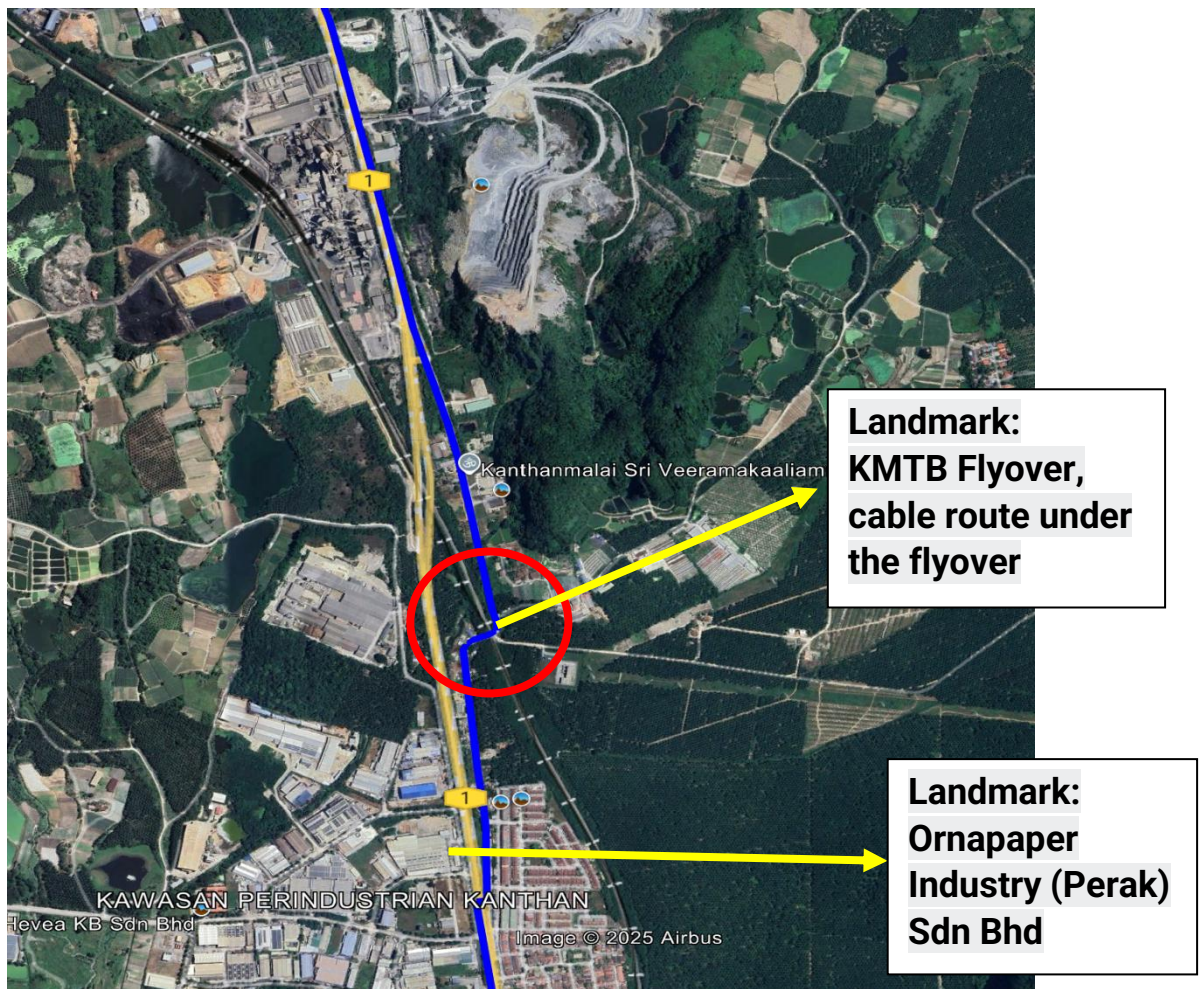


### D. Second Crossing

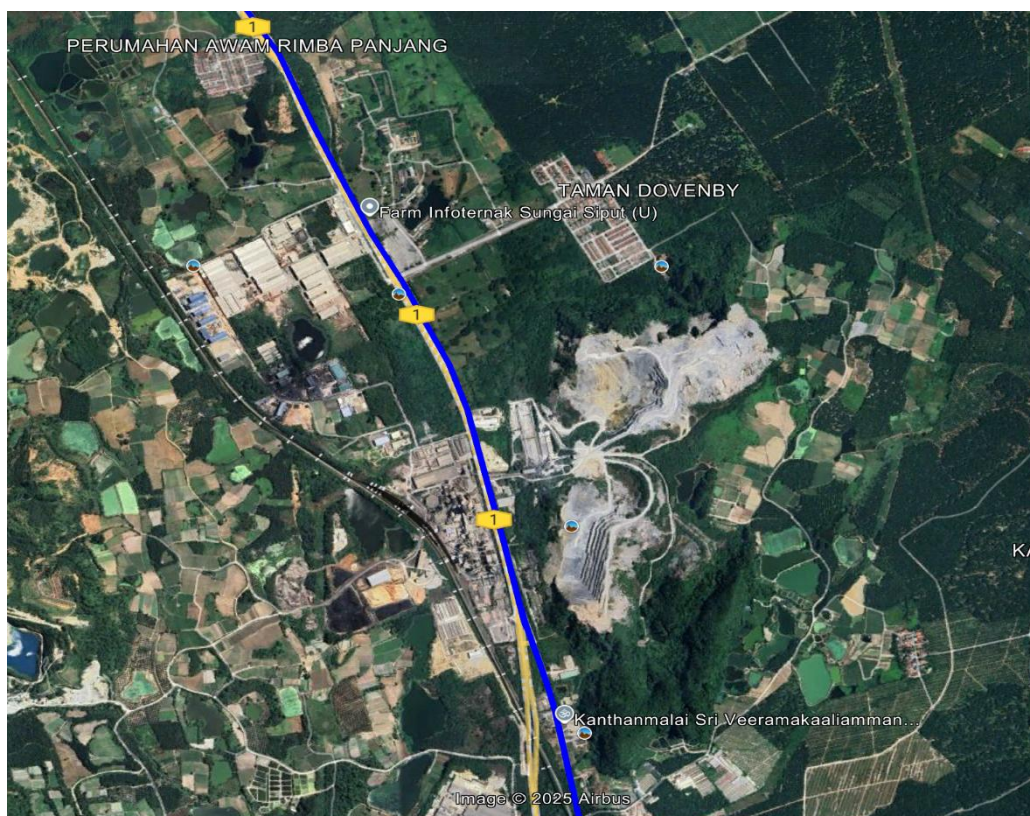


**Landmark:**  
**Ornapaper**  
**Industry (Perak)**  
**Sdn Bhd**

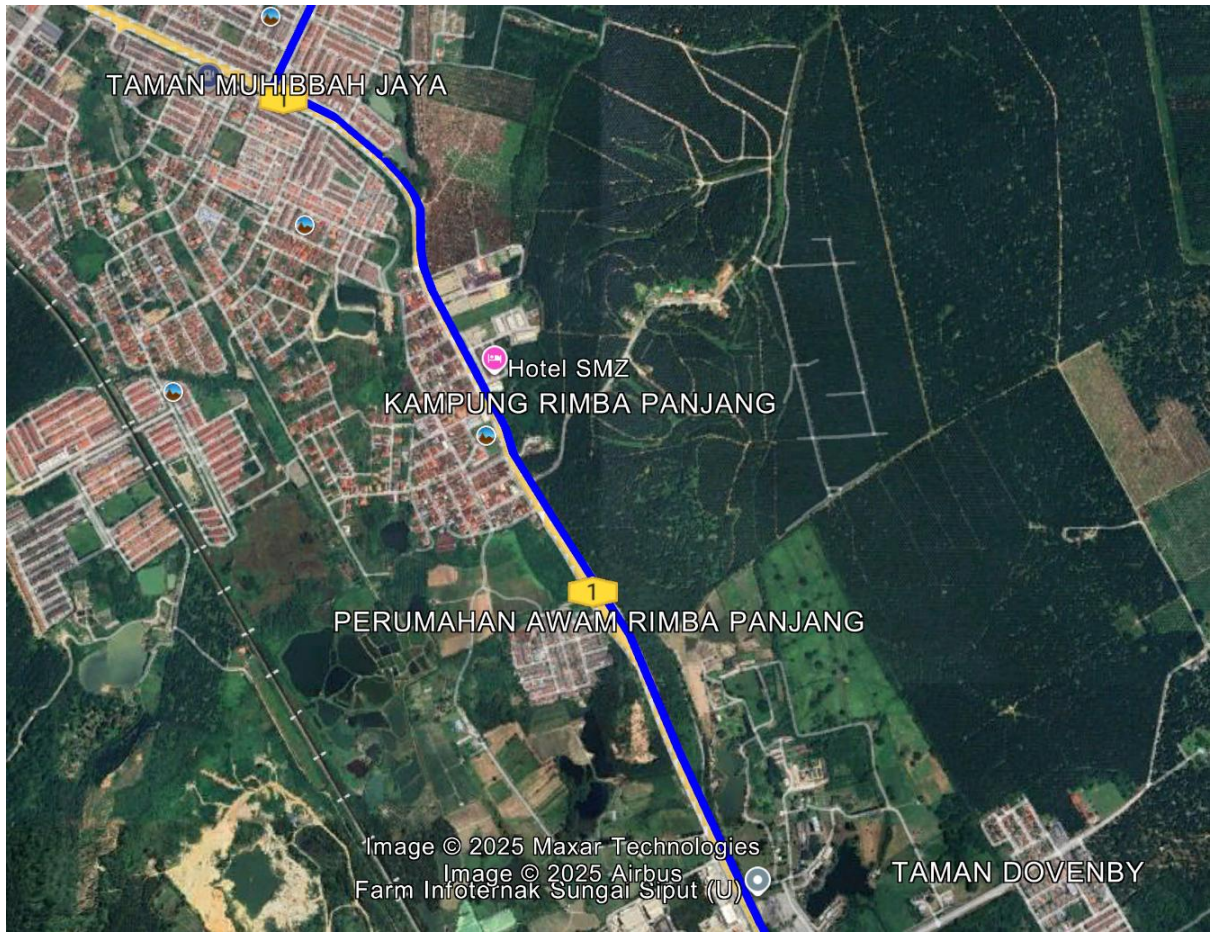
### E. Third Crossing



### F. Con't from Third Crossing



## F. Con't from Third Crossing



## G. Last Bend Towards SPPIF



## G. Route Towards SPPIF – 1



## H. Route Towards SPPIF – 2



## H. Route Towards SPPIF – 3

