

**SDU SHOPLOT  
PERSIARAN EMAS  
INDAH 1**



**4.771122, 100.935174**

**PROCESS OF HDD AND MICRO TRENCHING MCT**

PROCESS OF HDD



1) SITE PHOTOS (GAMBAR LOKASI)  
HORIZONTAL DIRECTIONAL DRILLING (HDD), (1 WAY : 100M)



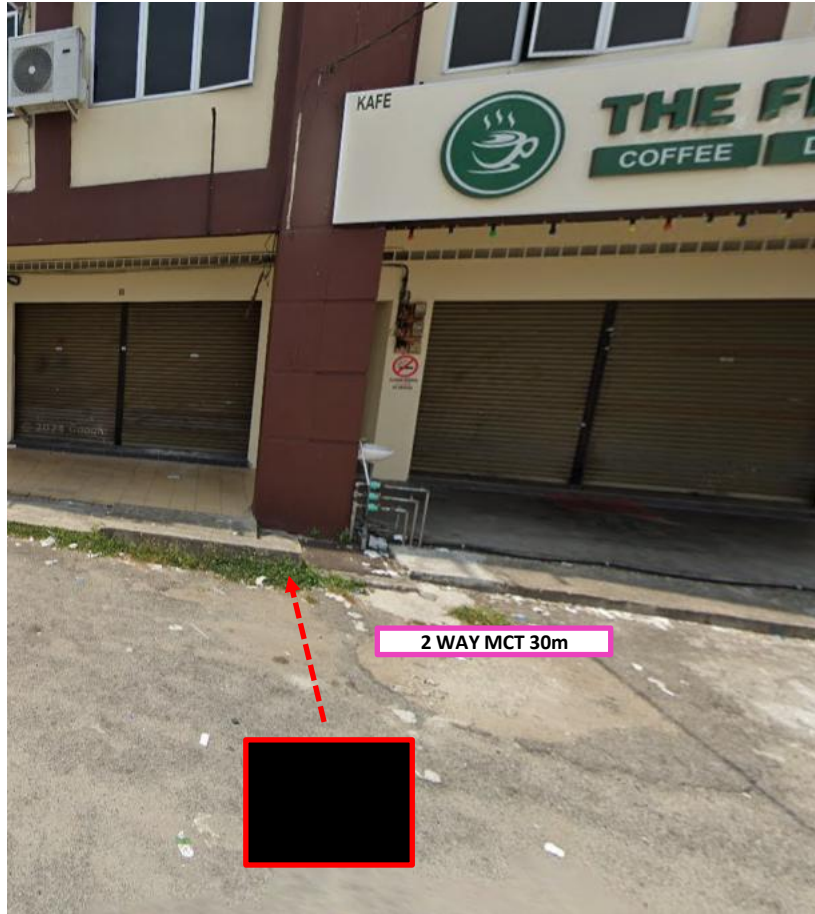
**1.2) TABLE LOCATION HDD**

<b>NAME</b>	<b>START POINT (LAT, LONG)</b>	<b>END POINT (LAT, LONG)</b>	<b>LENGTH (m)</b>
HDD : 1 WAY	4.771236, 100.936421 (Jalan Dato Sagor)	4.771358, 100.935729 (Persiaran Emas Indah 1)	<b>100M</b>
PROPOSED NEW MH 1	4.771358, 100.935729 (Persiaran Emas Indah 1)	-	-
<b>TOTAL HDD</b>			<b>100M</b>

PROCESS OF MCT



2) SITE PHOTOS (GAMBAR LOKASI)  
MICRO TRENCHING (MCT), (2 WAY : 30m)



**2.1) TABLE LOCATION MCT**

<b>NAME</b>	<b>START POINT (LAT, LONG)</b>	<b>END POINT (LAT, LONG)</b>	<b>LENGTH (m)</b>
A	4.771358, 100.935729 (Persiaran Emas Indah 1)	4.771403, 100.935694 (Persiaran Emas Indah 1)	<b>30m</b>
<b>TOTAL MCT</b>			<b>30m</b>